



Full wwPDB X-ray Structure Validation Report ⓘ

May 14, 2020 – 09:23 pm BST

PDB ID : 4OK1
Title : Crystal structure of W741L-AR-LBD bound with co-regulator peptide
Authors : Liu, J.S.; Hsu, C.L.; Wu, W.G.
Deposited on : 2014-01-21
Resolution : 2.09 Å(reported)

This is a Full wwPDB X-ray Structure Validation Report for a publicly released PDB entry.

We welcome your comments at validation@mail.wwpdb.org

A user guide is available at

<https://www.wwpdb.org/validation/2017/XrayValidationReportHelp>

with specific help available everywhere you see the ⓘ symbol.

The following versions of software and data (see [references ⓘ](#)) were used in the production of this report:

MolProbity : 4.02b-467
Mogul : 1.8.5 (274361), CSD as541be (2020)
Xtriage (Phenix) : 1.13
EDS : 2.11
buster-report : 1.1.7 (2018)
Percentile statistics : 20191225.v01 (using entries in the PDB archive December 25th 2019)
Refmac : 5.8.0158
CCP4 : 7.0.044 (Gargrove)
Ideal geometry (proteins) : Engh & Huber (2001)
Ideal geometry (DNA, RNA) : Parkinson et al. (1996)
Validation Pipeline (wwPDB-VP) : 2.11

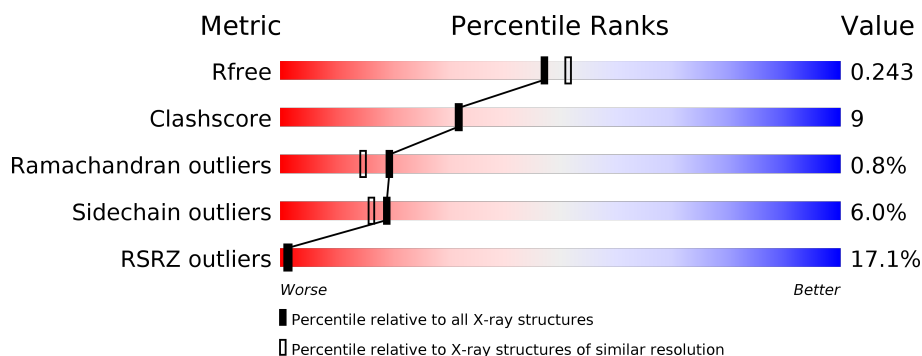
1 Overall quality at a glance

The following experimental techniques were used to determine the structure:

X-RAY DIFFRACTION

The reported resolution of this entry is 2.09 Å.

Percentile scores (ranging between 0-100) for global validation metrics of the entry are shown in the following graphic. The table shows the number of entries on which the scores are based.



Metric	Whole archive (#Entries)	Similar resolution (#Entries, resolution range(Å))
R_{free}	130704	5197 (2.10-2.10)
Clashscore	141614	5710 (2.10-2.10)
Ramachandran outliers	138981	5647 (2.10-2.10)
Sidechain outliers	138945	5648 (2.10-2.10)
RSRZ outliers	127900	5083 (2.10-2.10)

The table below summarises the geometric issues observed across the polymeric chains and their fit to the electron density. The red, orange, yellow and green segments on the lower bar indicate the fraction of residues that contain outliers for ≥ 3 , 2, 1 and 0 types of geometric quality criteria respectively. A grey segment represents the fraction of residues that are not modelled. The numeric value for each fraction is indicated below the corresponding segment, with a dot representing fractions $\leq 5\%$. The upper red bar (where present) indicates the fraction of residues that have poor fit to the electron density. The numeric value is given above the bar.

Mol	Chain	Length	Quality of chain
1	A	250	<div> <div>16%</div> <div> <div></div> <div>80%</div> <div>18%</div> <div>.</div> </div> </div>
2	B	11	<div> <div>27%</div> <div> <div></div> <div>73%</div> <div>9%</div> <div>18%</div> </div> </div>

2 Entry composition [i](#)

There are 4 unique types of molecules in this entry. The entry contains 2161 atoms, of which 0 are hydrogens and 0 are deuteriums.

In the tables below, the ZeroOcc column contains the number of atoms modelled with zero occupancy, the AltConf column contains the number of residues with at least one atom in alternate conformation and the Trace column contains the number of residues modelled with at most 2 atoms.

- Molecule 1 is a protein called Androgen receptor.

Mol	Chain	Residues	Atoms					ZeroOcc	AltConf	Trace
1	A	249	Total	C	N	O	S	0	0	0
			2025	1311	346	350	18			

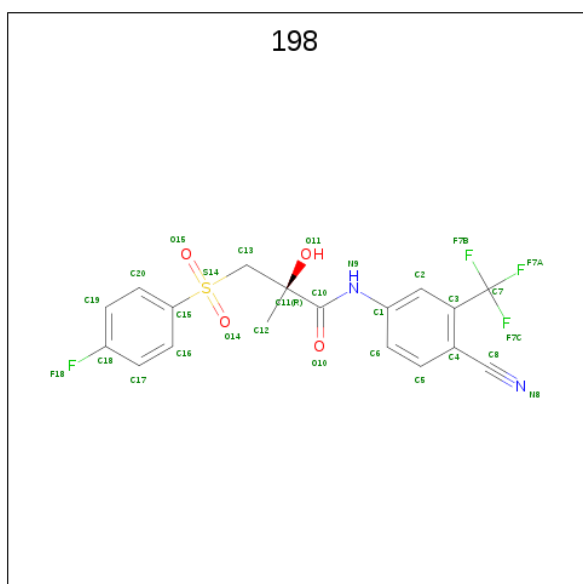
There are 2 discrepancies between the modelled and reference sequences:

Chain	Residue	Modelled	Actual	Comment	Reference
A	741	LEU	TRP	ENGINEERED MUTATION	UNP P10275
A	760	ALA	ARG	ENGINEERED MUTATION	UNP P10275

- Molecule 2 is a protein called co-regulator peptide.

Mol	Chain	Residues	Atoms				ZeroOcc	AltConf	Trace
2	B	9	Total	C	N	O	0	0	0
			71	46	12	13			

- Molecule 3 is R-BICALUTAMIDE (three-letter code: 198) (formula: C₁₈H₁₄F₄N₂O₄S).



Mol	Chain	Residues	Atoms						ZeroOcc	AltConf
3	A	1	Total	C	F	N	O	S	0	0
			29	18	4	2	4	1		

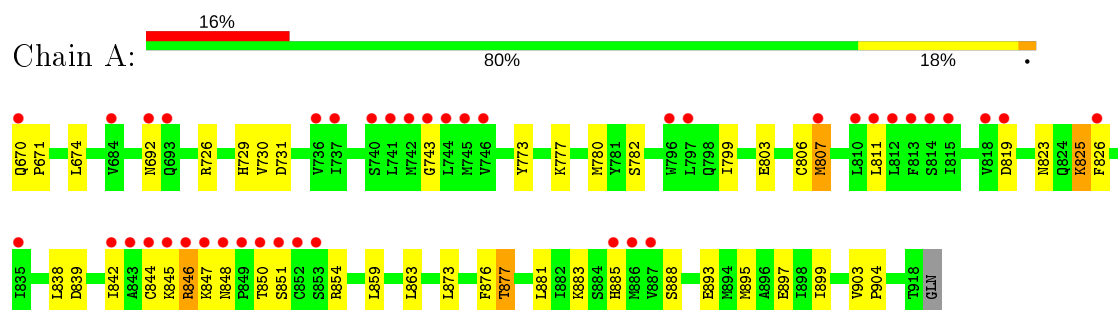
- Molecule 4 is water.

Mol	Chain	Residues	Atoms		ZeroOcc	AltConf
4	A	34	Total	O	0	0
			34	34		
4	B	2	Total	O	0	0
			2	2		

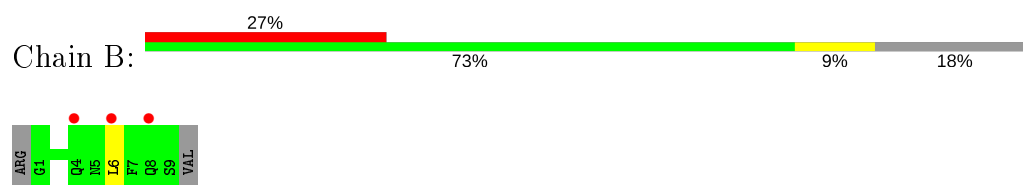
3 Residue-property plots [i](#)

These plots are drawn for all protein, RNA and DNA chains in the entry. The first graphic for a chain summarises the proportions of the various outlier classes displayed in the second graphic. The second graphic shows the sequence view annotated by issues in geometry and electron density. Residues are color-coded according to the number of geometric quality criteria for which they contain at least one outlier: green = 0, yellow = 1, orange = 2 and red = 3 or more. A red dot above a residue indicates a poor fit to the electron density ($RSRZ > 2$). Stretches of 2 or more consecutive residues without any outlier are shown as a green connector. Residues present in the sample, but not in the model, are shown in grey.

- Molecule 1: Androgen receptor



- Molecule 2: co-regulator peptide



4 Data and refinement statistics

Property	Value	Source
Space group	P 21 21 21	Depositor
Cell constants a, b, c, α , β , γ	53.45Å 66.09Å 69.66Å 90.00° 90.00° 90.00°	Depositor
Resolution (Å)	20.00 – 2.09 28.11 – 2.09	Depositor EDS
% Data completeness (in resolution range)	96.4 (20.00-2.09) 96.3 (28.11-2.09)	Depositor EDS
R_{merge}	0.07	Depositor
R_{sym}	(Not available)	Depositor
$\langle I/\sigma(I) \rangle$ ¹	1.13 (at 2.08Å)	Xtriage
Refinement program	REFMAC 5.7.0029	Depositor
R, R_{free}	0.195 , 0.249 0.201 , 0.243	Depositor DCC
R_{free} test set	738 reflections (5.04%)	wwPDB-VP
Wilson B-factor (Å ²)	37.3	Xtriage
Anisotropy	0.909	Xtriage
Bulk solvent k_{sol} (e/Å ³), B_{sol} (Å ²)	0.40 , 62.4	EDS
L-test for twinning ²	$\langle L \rangle = 0.50$, $\langle L^2 \rangle = 0.33$	Xtriage
Estimated twinning fraction	No twinning to report.	Xtriage
F_o, F_c correlation	0.96	EDS
Total number of atoms	2161	wwPDB-VP
Average B, all atoms (Å ²)	52.0	wwPDB-VP

Xtriage's analysis on translational NCS is as follows: *The largest off-origin peak in the Patterson function is 8.92% of the height of the origin peak. No significant pseudotranslation is detected.*

¹Intensities estimated from amplitudes.

²Theoretical values of $\langle |L| \rangle$, $\langle L^2 \rangle$ for acentric reflections are 0.5, 0.333 respectively for untwinned datasets, and 0.375, 0.2 for perfectly twinned datasets.

5 Model quality [i](#)

5.1 Standard geometry [i](#)

Bond lengths and bond angles in the following residue types are not validated in this section:
198

The Z score for a bond length (or angle) is the number of standard deviations the observed value is removed from the expected value. A bond length (or angle) with $|Z| > 5$ is considered an outlier worth inspection. RMSZ is the root-mean-square of all Z scores of the bond lengths (or angles).

Mol	Chain	Bond lengths		Bond angles	
		RMSZ	$\# Z > 5$	RMSZ	$\# Z > 5$
1	A	0.76	1/2074 (0.0%)	0.85	1/2801 (0.0%)
2	B	0.60	0/72	0.87	0/95
All	All	0.75	1/2146 (0.0%)	0.85	1/2896 (0.0%)

All (1) bond length outliers are listed below:

Mol	Chain	Res	Type	Atoms	Z	Observed(Å)	Ideal(Å)
1	A	743	GLY	N-CA	5.36	1.54	1.46

All (1) bond angle outliers are listed below:

Mol	Chain	Res	Type	Atoms	Z	Observed(°)	Ideal(°)
1	A	807	MET	CG-SD-CE	5.07	108.31	100.20

There are no chirality outliers.

There are no planarity outliers.

5.2 Too-close contacts [i](#)

In the following table, the Non-H and H(model) columns list the number of non-hydrogen atoms and hydrogen atoms in the chain respectively. The H(added) column lists the number of hydrogen atoms added and optimized by MolProbity. The Clashes column lists the number of clashes within the asymmetric unit, whereas Symm-Clashes lists symmetry related clashes.

Mol	Chain	Non-H	H(model)	H(added)	Clashes	Symm-Clashes
1	A	2025	0	2049	38	0
2	B	71	0	66	0	0
3	A	29	0	14	4	0
4	A	34	0	0	1	0

Continued on next page...

Continued from previous page...

Mol	Chain	Non-H	H(model)	H(added)	Clashes	Symm-Clashes
4	B	2	0	0	0	0
All	All	2161	0	2129	38	0

The all-atom clashscore is defined as the number of clashes found per 1000 atoms (including hydrogen atoms). The all-atom clashscore for this structure is 9.

All (38) close contacts within the same asymmetric unit are listed below, sorted by their clash magnitude.

Atom-1	Atom-2	Interatomic distance (Å)	Clash overlap (Å)
1:A:729:HIS:HD2	1:A:731:ASP:H	1.13	0.96
1:A:806:CYS:HB3	4:A:1104:HOH:O	1.75	0.86
1:A:899:ILE:HD11	3:A:1001:198:H2O	1.66	0.77
1:A:895:MET:O	1:A:899:ILE:HG12	1.86	0.76
1:A:873:LEU:O	1:A:877:THR:HG23	1.88	0.74
1:A:899:ILE:O	1:A:904:PRO:HD3	1.90	0.70
1:A:873:LEU:O	1:A:877:THR:CG2	2.41	0.69
1:A:850:THR:O	1:A:854:ARG:HB2	1.94	0.67
1:A:729:HIS:CD2	1:A:731:ASP:H	2.05	0.65
1:A:670:GLN:HB3	1:A:671:PRO:HD2	1.78	0.63
1:A:846:ARG:C	1:A:848:ASN:H	2.06	0.58
1:A:893:GLU:CD	1:A:893:GLU:H	2.06	0.58
1:A:799:ILE:HD12	1:A:859:LEU:HD21	1.87	0.57
1:A:899:ILE:HD11	3:A:1001:198:C2O	2.39	0.51
1:A:726:ARG:HB2	1:A:726:ARG:HH11	1.76	0.51
1:A:670:GLN:HB3	1:A:671:PRO:CD	2.43	0.48
1:A:773:TYR:O	1:A:777:LYS:HG2	2.14	0.48
1:A:799:ILE:CD1	1:A:859:LEU:HD21	2.43	0.48
1:A:899:ILE:O	1:A:903:VAL:HB	2.13	0.48
1:A:726:ARG:NH1	1:A:726:ARG:HB2	2.30	0.46
1:A:823:ASN:OD1	1:A:825:LYS:HE2	2.16	0.46
1:A:850:THR:O	1:A:854:ARG:CB	2.62	0.45
1:A:811:LEU:HG	1:A:863:LEU:HD22	1.99	0.45
1:A:899:ILE:HA	1:A:903:VAL:CG2	2.46	0.45
1:A:838:LEU:O	1:A:842:ILE:HG23	2.17	0.45
1:A:881:LEU:HD22	1:A:899:ILE:HB	1.98	0.44
1:A:844:CYS:O	1:A:846:ARG:HD3	2.16	0.44
1:A:803:GLU:O	1:A:807:MET:HG3	2.18	0.43
1:A:780:MET:HG2	1:A:876:PHE:CZ	2.53	0.43
1:A:823:ASN:ND2	1:A:826:PHE:CE2	2.87	0.42
1:A:799:ILE:HD12	1:A:859:LEU:CD2	2.48	0.42
1:A:899:ILE:CD1	3:A:1001:198:H2O	2.43	0.42

Continued on next page...

Continued from previous page...

Atom-1	Atom-2	Interatomic distance (Å)	Clash overlap (Å)
1:A:846:ARG:C	1:A:848:ASN:N	2.72	0.42
1:A:839:ASP:O	1:A:842:ILE:HG12	2.19	0.41
1:A:825:LYS:HG3	1:A:825:LYS:H	1.52	0.41
1:A:899:ILE:CD1	3:A:1001:198:C20	2.98	0.40
1:A:877:THR:OG1	1:A:899:ILE:HD12	2.21	0.40
1:A:873:LEU:O	1:A:877:THR:HG22	2.18	0.40

There are no symmetry-related clashes.

5.3 Torsion angles [i](#)

5.3.1 Protein backbone [i](#)

In the following table, the Percentiles column shows the percent Ramachandran outliers of the chain as a percentile score with respect to all X-ray entries followed by that with respect to entries of similar resolution.

The Analysed column shows the number of residues for which the backbone conformation was analysed, and the total number of residues.

Mol	Chain	Analysed	Favoured	Allowed	Outliers	Percentiles	
1	A	247/250 (99%)	241 (98%)	4 (2%)	2 (1%)	19	15
2	B	7/11 (64%)	7 (100%)	0	0	100	100
All	All	254/261 (97%)	248 (98%)	4 (2%)	2 (1%)	19	15

All (2) Ramachandran outliers are listed below:

Mol	Chain	Res	Type
1	A	847	LYS
1	A	730	VAL

5.3.2 Protein sidechains [i](#)

In the following table, the Percentiles column shows the percent sidechain outliers of the chain as a percentile score with respect to all X-ray entries followed by that with respect to entries of similar resolution.

The Analysed column shows the number of residues for which the sidechain conformation was analysed, and the total number of residues.

Mol	Chain	Analysed	Rotameric	Outliers	Percentiles	
1	A	226/227 (100%)	213 (94%)	13 (6%)	20	17
2	B	7/9 (78%)	6 (86%)	1 (14%)	3	1
All	All	233/236 (99%)	219 (94%)	14 (6%)	19	16

All (14) residues with a non-rotameric sidechain are listed below:

Mol	Chain	Res	Type
1	A	674	LEU
1	A	692	ASN
1	A	782	SER
1	A	819	ASP
1	A	825	LYS
1	A	845	LYS
1	A	846	ARG
1	A	851	SER
1	A	877	THR
1	A	883	LYS
1	A	885	HIS
1	A	888	SER
1	A	897	GLU
2	B	6	LEU

Some sidechains can be flipped to improve hydrogen bonding and reduce clashes. All (4) such sidechains are listed below:

Mol	Chain	Res	Type
1	A	670	GLN
1	A	729	HIS
1	A	874	HIS
1	A	885	HIS

5.3.3 RNA ⓘ

There are no RNA molecules in this entry.

5.4 Non-standard residues in protein, DNA, RNA chains ⓘ

There are no non-standard protein/DNA/RNA residues in this entry.

5.5 Carbohydrates

There are no carbohydrates in this entry.

5.6 Ligand geometry

1 ligand is modelled in this entry.

In the following table, the Counts columns list the number of bonds (or angles) for which Mogul statistics could be retrieved, the number of bonds (or angles) that are observed in the model and the number of bonds (or angles) that are defined in the Chemical Component Dictionary. The Link column lists molecule types, if any, to which the group is linked. The Z score for a bond length (or angle) is the number of standard deviations the observed value is removed from the expected value. A bond length (or angle) with $|Z| > 2$ is considered an outlier worth inspection. RMSZ is the root-mean-square of all Z scores of the bond lengths (or angles).

Mol	Type	Chain	Res	Link	Bond lengths			Bond angles		
					Counts	RMSZ	$\# Z > 2$	Counts	RMSZ	$\# Z > 2$
3	198	A	1001	-	29,30,30	3.44	9 (31%)	41,46,46	2.15	13 (31%)

In the following table, the Chirals column lists the number of chiral outliers, the number of chiral centers analysed, the number of these observed in the model and the number defined in the Chemical Component Dictionary. Similar counts are reported in the Torsion and Rings columns. '-' means no outliers of that kind were identified.

Mol	Type	Chain	Res	Link	Chirals	Torsions	Rings
3	198	A	1001	-	-	8/30/30/30	0/2/2/2

All (9) bond length outliers are listed below:

Mol	Chain	Res	Type	Atoms	Z	Observed(Å)	Ideal(Å)
3	A	1001	198	C13-S14	-10.02	1.67	1.78
3	A	1001	198	C15-S14	-8.15	1.63	1.76
3	A	1001	198	C4-C8	-8.09	1.32	1.44
3	A	1001	198	C4-C3	5.32	1.48	1.40
3	A	1001	198	C1-N9	-4.34	1.32	1.41
3	A	1001	198	C2-C1	3.54	1.45	1.39
3	A	1001	198	C11-C10	-3.36	1.50	1.54
3	A	1001	198	C5-C4	2.16	1.43	1.40
3	A	1001	198	C16-C15	2.02	1.42	1.38

All (13) bond angle outliers are listed below:

Mol	Chain	Res	Type	Atoms	Z	Observed(°)	Ideal(°)
3	A	1001	198	O10-C10-C11	5.35	123.81	120.16
3	A	1001	198	C16-C15-S14	5.06	125.03	119.49
3	A	1001	198	O15-S14-O14	-4.59	113.07	118.44
3	A	1001	198	C6-C1-C2	3.97	124.36	119.65
3	A	1001	198	C19-C20-C15	3.78	123.36	119.45
3	A	1001	198	C1-C2-C3	-3.20	117.12	120.91
3	A	1001	198	F18-C18-C17	3.10	123.81	118.54
3	A	1001	198	C3-C4-C8	-2.63	119.37	122.26
3	A	1001	198	C16-C17-C18	2.28	120.72	118.36
3	A	1001	198	C4-C8-N8	-2.26	174.16	177.88
3	A	1001	198	C19-C18-C17	-2.20	119.90	122.83
3	A	1001	198	C20-C15-S14	-2.04	117.25	119.49
3	A	1001	198	C6-C1-N9	-2.04	113.56	120.40

There are no chirality outliers.

All (8) torsion outliers are listed below:

Mol	Chain	Res	Type	Atoms
3	A	1001	198	C11-C13-S14-O14
3	A	1001	198	C4-C3-C7-F7C
3	A	1001	198	C11-C13-S14-C15
3	A	1001	198	C4-C3-C7-F7B
3	A	1001	198	C11-C13-S14-O15
3	A	1001	198	C4-C3-C7-F7A
3	A	1001	198	C2-C3-C7-F7C
3	A	1001	198	C2-C3-C7-F7B

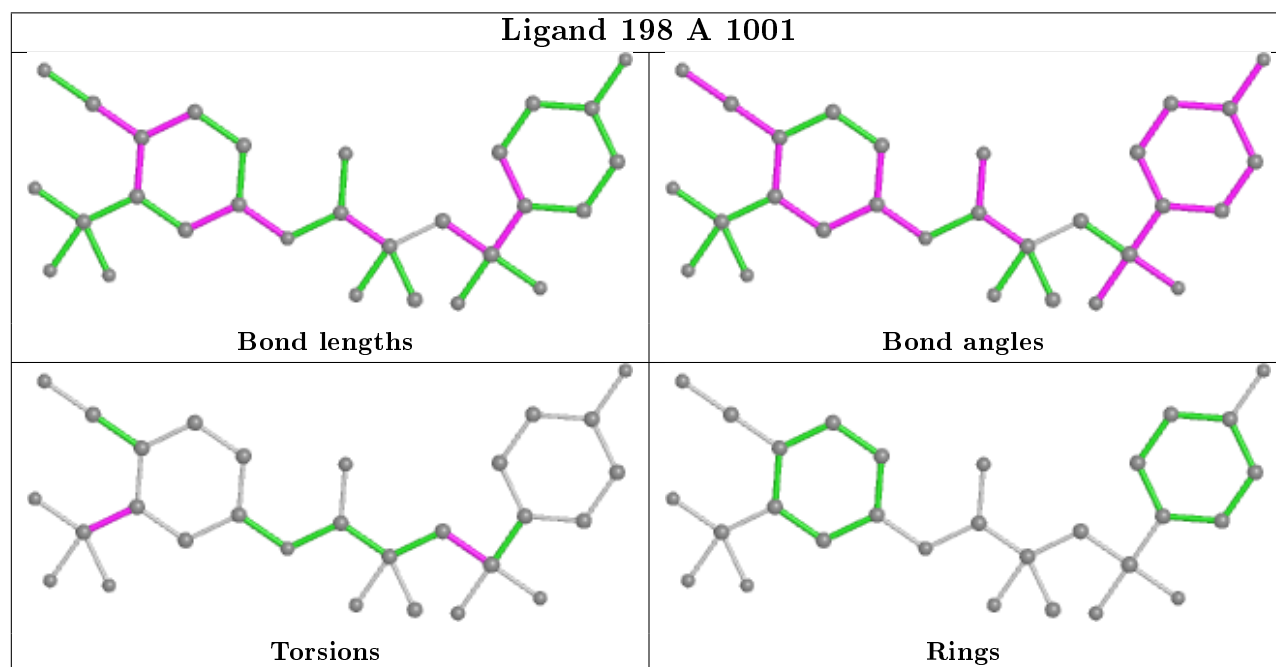
There are no ring outliers.

1 monomer is involved in 4 short contacts:

Mol	Chain	Res	Type	Clashes	Symm-Clashes
3	A	1001	198	4	0

The following is a two-dimensional graphical depiction of Mogul quality analysis of bond lengths, bond angles, torsion angles, and ring geometry for all instances of the Ligand of Interest. In addition, ligands with molecular weight > 250 and outliers as shown on the validation Tables will also be included. For torsion angles, if less than 5% of the Mogul distribution of torsion angles is within 10 degrees of the torsion angle in question, then that torsion angle is considered an outlier. Any bond that is central to one or more torsion angles identified as an outlier by Mogul will be highlighted in the graph. For rings, the root-mean-square deviation (RMSD) between the ring in question and similar rings identified by Mogul is calculated over all ring torsion angles. If the average RMSD is greater than 60 degrees and the minimal RMSD between the ring in question and any Mogul-identified rings is also greater than 60 degrees, then that ring is considered an outlier.

The outliers are highlighted in purple. The color gray indicates Mogul did not find sufficient equivalents in the CSD to analyse the geometry.



5.7 Other polymers [i](#)

There are no such residues in this entry.

5.8 Polymer linkage issues [i](#)

There are no chain breaks in this entry.

6 Fit of model and data ⓘ

6.1 Protein, DNA and RNA chains ⓘ

In the following table, the column labelled ‘#RSRZ> 2’ contains the number (and percentage) of RSRZ outliers, followed by percent RSRZ outliers for the chain as percentile scores relative to all X-ray entries and entries of similar resolution. The OWAB column contains the minimum, median, 95th percentile and maximum values of the occupancy-weighted average B-factor per residue. The column labelled ‘Q< 0.9’ lists the number of (and percentage) of residues with an average occupancy less than 0.9.

Mol	Chain	Analysed	<RSRZ>	#RSRZ>2		OWAB(Å ²)	Q<0.9
1	A	249/250 (99%)	0.75	41 (16%)	1 2	32, 46, 87, 134	7 (2%)
2	B	9/11 (81%)	2.04	3 (33%)	0 0	52, 61, 88, 93	0
All	All	258/261 (98%)	0.80	44 (17%)	1 1	32, 47, 88, 134	7 (2%)

All (44) RSRZ outliers are listed below:

Mol	Chain	Res	Type	RSRZ
1	A	670	GLN	8.8
1	A	844	CYS	7.1
1	A	845	LYS	6.5
1	A	846	ARG	6.5
2	B	8	GLN	6.2
1	A	850	THR	6.1
1	A	848	ASN	5.5
1	A	886	MET	5.2
1	A	849	PRO	4.8
1	A	810	LEU	4.7
1	A	811	LEU	4.4
1	A	852	CYS	4.3
1	A	842	ILE	4.3
1	A	847	LYS	4.3
1	A	812	LEU	3.9
1	A	692	ASN	3.8
1	A	843	ALA	3.8
1	A	796	TRP	3.7
1	A	887	VAL	3.6
1	A	740	SER	3.6
1	A	885	HIS	3.3
1	A	741	LEU	3.3
1	A	815	ILE	3.2
2	B	6	LEU	3.2

Continued on next page...

Continued from previous page...

Mol	Chain	Res	Type	RSRZ
1	A	797	LEU	3.2
1	A	807	MET	3.1
1	A	813	PHE	3.1
1	A	853	SER	3.1
1	A	744	LEU	3.1
1	A	851	SER	3.0
1	A	826	PHE	2.9
1	A	818	VAL	2.7
1	A	743	GLY	2.7
1	A	745	MET	2.6
1	A	819	ASP	2.5
1	A	736	VAL	2.5
1	A	693	GLN	2.5
1	A	737	ILE	2.5
2	B	4	GLN	2.4
1	A	746	VAL	2.3
1	A	742	MET	2.2
1	A	684	VAL	2.2
1	A	835	ILE	2.1
1	A	814	SER	2.0

6.2 Non-standard residues in protein, DNA, RNA chains [i](#)

There are no non-standard protein/DNA/RNA residues in this entry.

6.3 Carbohydrates [i](#)

There are no carbohydrates in this entry.

6.4 Ligands [i](#)

In the following table, the Atoms column lists the number of modelled atoms in the group and the number defined in the chemical component dictionary. The B-factors column lists the minimum, median, 95th percentile and maximum values of B factors of atoms in the group. The column labelled 'Q< 0.9' lists the number of atoms with occupancy less than 0.9.

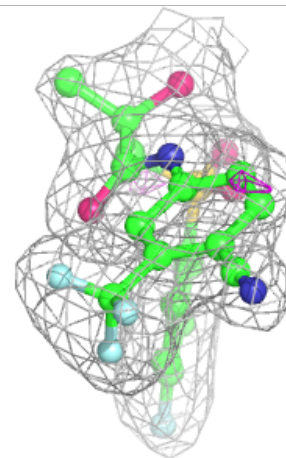
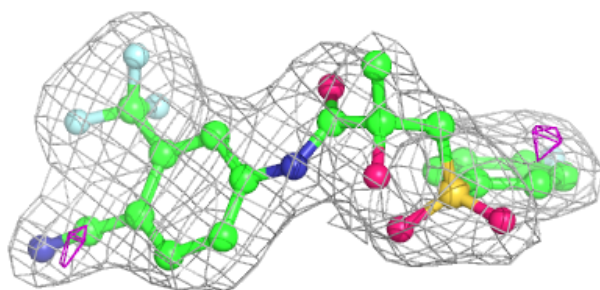
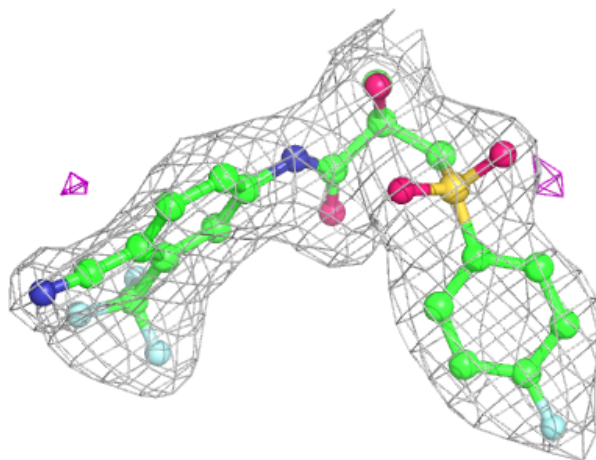
Mol	Type	Chain	Res	Atoms	RSCC	RSR	B-factors(\AA^2)	Q<0.9
3	198	A	1001	29/29	0.97	0.14	31,39,47,53	0

The following is a graphical depiction of the model fit to experimental electron density of all

instances of the Ligand of Interest. In addition, ligands with molecular weight > 250 and outliers as shown on the geometry validation Tables will also be included. Each fit is shown from different orientation to approximate a three-dimensional view.

Electron density around 198 A 1001:

$2mF_o-DF_c$ (at 0.7 rmsd) in gray
 mF_o-DF_c (at 3 rmsd) in purple (negative)
and green (positive)



6.5 Other polymers [i](#)

There are no such residues in this entry.