



# Full wwPDB X-ray Structure Validation Report ⓘ

May 29, 2020 – 03:13 pm BST

PDB ID : 2ONB  
Title : Human Thymidylate Synthase at low salt conditions with PDPA bound  
Authors : Lovelace, L.L.; Gibson, L.M.; Lebioda, L.  
Deposited on : 2007-01-23  
Resolution : 2.70 Å(reported)

This is a Full wwPDB X-ray Structure Validation Report for a publicly released PDB entry.

We welcome your comments at [validation@mail.wwpdb.org](mailto:validation@mail.wwpdb.org)

A user guide is available at

<https://www.wwpdb.org/validation/2017/XrayValidationReportHelp>

with specific help available everywhere you see the ⓘ symbol.

---

The following versions of software and data (see [references ⓘ](#)) were used in the production of this report:

MolProbity : 4.02b-467  
Mogul : 1.8.5 (274361), CSD as541be (2020)  
Xtriage (Phenix) : 1.13  
EDS : 2.11  
Percentile statistics : 20191225.v01 (using entries in the PDB archive December 25th 2019)  
Refmac : 5.8.0158  
CCP4 : 7.0.044 (Gargrove)  
Ideal geometry (proteins) : Engh & Huber (2001)  
Ideal geometry (DNA, RNA) : Parkinson et al. (1996)  
Validation Pipeline (wwPDB-VP) : 2.11

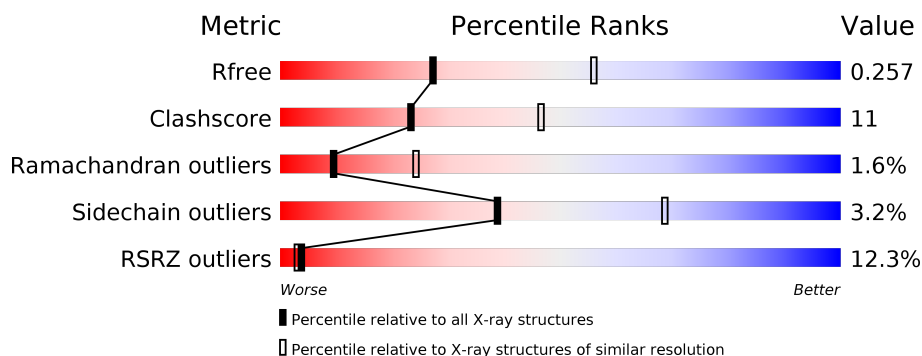
# 1 Overall quality at a glance

The following experimental techniques were used to determine the structure:

## *X-RAY DIFFRACTION*

The reported resolution of this entry is 2.70 Å.

Percentile scores (ranging between 0-100) for global validation metrics of the entry are shown in the following graphic. The table shows the number of entries on which the scores are based.



Metric	Whole archive (#Entries)	Similar resolution (#Entries, resolution range(Å))
$R_{free}$	130704	2808 (2.70-2.70)
Clashscore	141614	3122 (2.70-2.70)
Ramachandran outliers	138981	3069 (2.70-2.70)
Sidechain outliers	138945	3069 (2.70-2.70)
RSRZ outliers	127900	2737 (2.70-2.70)

The table below summarises the geometric issues observed across the polymeric chains and their fit to the electron density. The red, orange, yellow and green segments on the lower bar indicate the fraction of residues that contain outliers for  $\geq 3$ , 2, 1 and 0 types of geometric quality criteria respectively. A grey segment represents the fraction of residues that are not modelled. The numeric value for each fraction is indicated below the corresponding segment, with a dot representing fractions  $\leq 5\%$ . The upper red bar (where present) indicates the fraction of residues that have poor fit to the electron density. The numeric value is given above the bar.

Mol	Chain	Length	Quality of chain
1	A	313	<div> <div>10%</div> <div>61%</div> <div>22%</div> <div>•</div> <div>16%</div> </div>

## 2 Entry composition [i](#)

There are 5 unique types of molecules in this entry. The entry contains 2213 atoms, of which 0 are hydrogens and 0 are deuteriums.

In the tables below, the ZeroOcc column contains the number of atoms modelled with zero occupancy, the AltConf column contains the number of residues with at least one atom in alternate conformation and the Trace column contains the number of residues modelled with at most 2 atoms.

- Molecule 1 is a protein called Thymidylate synthetase.

Mol	Chain	Residues	Atoms					ZeroOcc	AltConf	Trace
			Total	C	N	O	S			
1	A	264	2097	1337	360	384	16	0	1	0

There are 4 discrepancies between the modelled and reference sequences:

Chain	Residue	Modelled	Actual	Comment	Reference
A	43	CME	CYS	MODIFIED RESIDUE	UNP Q53Y97
A	180	CME	CYS	MODIFIED RESIDUE	UNP Q53Y97
A	195	CME	CYS	MODIFIED RESIDUE	UNP Q53Y97
A	199	CME	CYS	MODIFIED RESIDUE	UNP Q53Y97

- Molecule 2 is SULFATE ION (three-letter code: SO4) (formula: O<sub>4</sub>S).



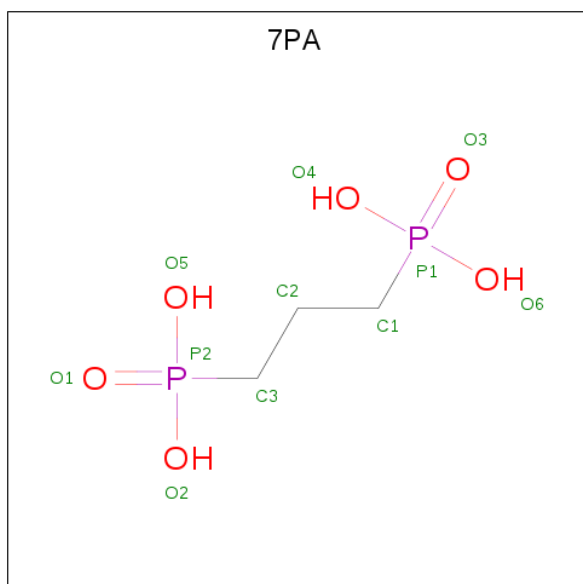
Mol	Chain	Residues	Atoms			ZeroOcc	AltConf
2	A	1	Total	O	S	0	0
			5	4	1		

- Molecule 3 is 1,2-ETHANEDIOL (three-letter code: EDO) (formula:  $C_2H_6O_2$ ).



Mol	Chain	Residues	Atoms			ZeroOcc	AltConf
3	A	1	Total	C	O	0	0
			4	2	2		

- Molecule 4 is PROPANE-1,3-DIYLBIS(PHOSPHONIC ACID) (three-letter code: 7PA) (formula:  $C_3H_{10}O_6P_2$ ).



Mol	Chain	Residues	Atoms				ZeroOcc	AltConf
4	A	1	Total	C	O	P	0	1
			22	6	12	4		

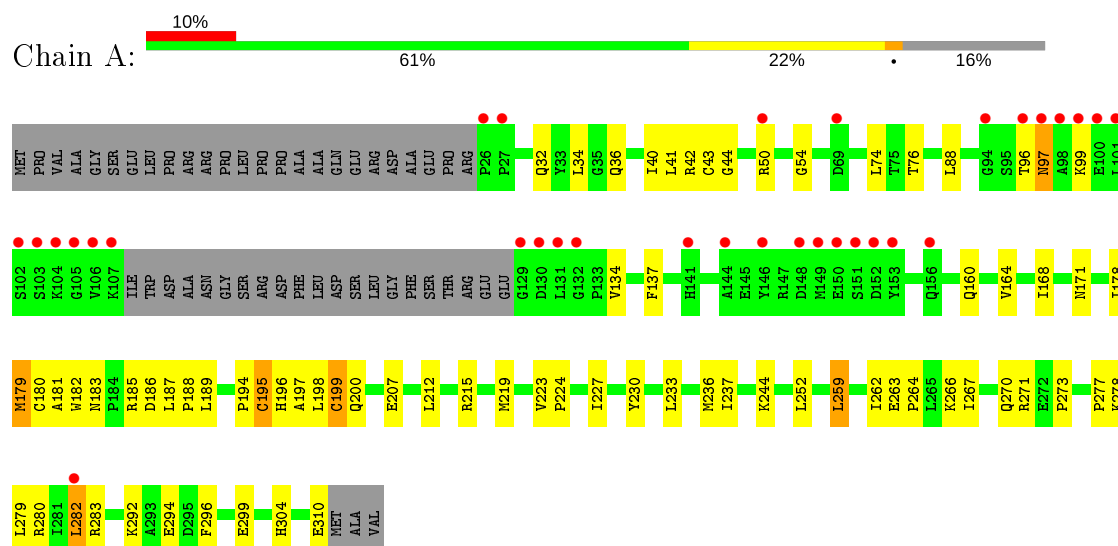
- Molecule 5 is water.

Mol	Chain	Residues	Atoms		ZeroOcc	AltConf
5	A	85	Total	O	0	0
			85	85		

### 3 Residue-property plots [i](#)

These plots are drawn for all protein, RNA and DNA chains in the entry. The first graphic for a chain summarises the proportions of the various outlier classes displayed in the second graphic. The second graphic shows the sequence view annotated by issues in geometry and electron density. Residues are color-coded according to the number of geometric quality criteria for which they contain at least one outlier: green = 0, yellow = 1, orange = 2 and red = 3 or more. A red dot above a residue indicates a poor fit to the electron density ( $RSRZ > 2$ ). Stretches of 2 or more consecutive residues without any outlier are shown as a green connector. Residues present in the sample, but not in the model, are shown in grey.

#### • Molecule 1: Thymidylate synthetase



## 4 Data and refinement statistics

Property	Value	Source
Space group	P 31 2 1	Depositor
Cell constants a, b, c, $\alpha$ , $\beta$ , $\gamma$	95.69 Å 95.69 Å 82.50 Å 90.00° 90.00° 120.00°	Depositor
Resolution (Å)	41.44 – 2.70 41.43 – 2.70	Depositor EDS
% Data completeness (in resolution range)	98.4 (41.44-2.70) 98.6 (41.43-2.70)	Depositor EDS
$R_{merge}$	0.11	Depositor
$R_{sym}$	(Not available)	Depositor
$\langle I/\sigma(I) \rangle$ <sup>1</sup>	8.21 (at 2.69 Å)	Xtriage
Refinement program	CNS 1.1	Depositor
R, $R_{free}$	0.216 , 0.259 0.214 , 0.257	Depositor DCC
$R_{free}$ test set	1270 reflections (10.31%)	wwPDB-VP
Wilson B-factor (Å <sup>2</sup> )	47.4	Xtriage
Anisotropy	0.339	Xtriage
Bulk solvent $k_{sol}$ (e/Å <sup>3</sup> ), $B_{sol}$ (Å <sup>2</sup> )	0.34 , 58.8	EDS
L-test for twinning <sup>2</sup>	$\langle  L  \rangle = 0.50$ , $\langle L^2 \rangle = 0.33$	Xtriage
Estimated twinning fraction	0.037 for -h,-k,l	Xtriage
$F_o, F_c$ correlation	0.93	EDS
Total number of atoms	2213	wwPDB-VP
Average B, all atoms (Å <sup>2</sup> )	52.0	wwPDB-VP

Xtriage's analysis on translational NCS is as follows: *The largest off-origin peak in the Patterson function is 3.74% of the height of the origin peak. No significant pseudotranslation is detected.*

<sup>1</sup>Intensities estimated from amplitudes.

<sup>2</sup>Theoretical values of  $\langle |L| \rangle$ ,  $\langle L^2 \rangle$  for acentric reflections are 0.5, 0.333 respectively for untwinned datasets, and 0.375, 0.2 for perfectly twinned datasets.

## 5 Model quality [i](#)

### 5.1 Standard geometry [i](#)

Bond lengths and bond angles in the following residue types are not validated in this section: CME, EDO, 7PA, SO4

The Z score for a bond length (or angle) is the number of standard deviations the observed value is removed from the expected value. A bond length (or angle) with  $|Z| > 5$  is considered an outlier worth inspection. RMSZ is the root-mean-square of all Z scores of the bond lengths (or angles).

Mol	Chain	Bond lengths		Bond angles	
		RMSZ	# Z  >5	RMSZ	# Z  >5
1	A	0.38	0/2107	0.59	0/2845

Chiral center outliers are detected by calculating the chiral volume of a chiral center and verifying if the center is modelled as a planar moiety or with the opposite hand. A planarity outlier is detected by checking planarity of atoms in a peptide group, atoms in a mainchain group or atoms of a sidechain that are expected to be planar.

Mol	Chain	#Chirality outliers	#Planarity outliers
1	A	0	7

There are no bond length outliers.

There are no bond angle outliers.

There are no chirality outliers.

All (7) planarity outliers are listed below:

Mol	Chain	Res	Type	Group
1	A	179	MET	Peptide
1	A	180	CME	Mainchain
1	A	194	PRO	Peptide
1	A	195	CME	Mainchain
1	A	199	CME	Mainchain
1	A	42	ARG	Peptide
1	A	43	CME	Mainchain

### 5.2 Too-close contacts [i](#)

In the following table, the Non-H and H(model) columns list the number of non-hydrogen atoms and hydrogen atoms in the chain respectively. The H(added) column lists the number of hydrogen atoms added and optimized by MolProbity. The Clashes column lists the number of clashes within



the asymmetric unit, whereas Symm-Clashes lists symmetry related clashes.

Mol	Chain	Non-H	H(model)	H(added)	Clashes	Symm-Clashes
1	A	2097	0	2032	47	0
2	A	5	0	0	0	0
3	A	4	0	6	0	0
4	A	22	0	12	5	0
5	A	85	0	0	2	0
All	All	2213	0	2050	47	0

The all-atom clashscore is defined as the number of clashes found per 1000 atoms (including hydrogen atoms). The all-atom clashscore for this structure is 11.

All (47) close contacts within the same asymmetric unit are listed below, sorted by their clash magnitude.

Atom-1	Atom-2	Interatomic distance (Å)	Clash overlap (Å)
1:A:183:ASN:HD21	4:A:319[B]:7PA:H12	0.97	1.14
1:A:183:ASN:ND2	4:A:319[B]:7PA:H12	1.81	0.93
1:A:74:LEU:HD12	1:A:224:PRO:HB3	1.61	0.82
1:A:223:VAL:O	1:A:227:ILE:HG12	1.86	0.76
1:A:215:ARG:NH1	4:A:319[A]:7PA:O2	2.15	0.75
1:A:186:ASP:HA	1:A:189:LEU:HD12	1.69	0.73
1:A:215:ARG:NH1	4:A:319[B]:7PA:O1	2.18	0.72
1:A:178:ILE:HG12	1:A:200:GLN:HB2	1.76	0.68
1:A:279:LEU:HD11	1:A:296:PHE:HB3	1.74	0.68
1:A:88:LEU:HD23	1:A:236:MET:HE1	1.77	0.67
1:A:185:ARG:HD2	4:A:319[B]:7PA:O6	1.95	0.66
1:A:267:ILE:HA	1:A:270:GLN:HE21	1.59	0.66
1:A:164:VAL:O	1:A:168:ILE:HG12	1.95	0.65
1:A:97:ASN:ND2	1:A:99:LYS:H	1.97	0.63
1:A:278:LYS:HE3	5:A:369:HOH:O	2.00	0.62
1:A:292:LYS:HE2	1:A:294:GLU:OE1	2.03	0.58
1:A:262:ILE:O	1:A:266:LYS:HG3	2.03	0.58
1:A:195:CME:O	1:A:197:ALA:N	2.37	0.57
1:A:219:MET:SD	1:A:223:VAL:HG21	2.46	0.56
1:A:34:LEU:HD11	1:A:273:PRO:HG3	1.87	0.55
1:A:185:ARG:HH21	1:A:185:ARG:HG2	1.72	0.53
1:A:212:LEU:HD22	1:A:230:TYR:CD2	2.43	0.53
1:A:181:ALA:H	1:A:199:CME:HZ2	1.73	0.53
1:A:223:VAL:HB	1:A:224:PRO:HD3	1.90	0.53
1:A:54:GLY:HA3	1:A:259:LEU:HD22	1.91	0.52
1:A:160:GLN:HB3	1:A:179:MET:HG3	1.90	0.52
1:A:195:CME:O	1:A:195:CME:SD	2.68	0.52

*Continued on next page...*

Continued from previous page...

Atom-1	Atom-2	Interatomic distance (Å)	Clash overlap (Å)
1:A:280:ARG:HD2	1:A:299:GLU:OE2	2.10	0.52
1:A:198:LEU:C	1:A:198:LEU:HD12	2.31	0.50
1:A:282:LEU:HD11	1:A:294:GLU:O	2.13	0.48
1:A:233:LEU:O	1:A:237:ILE:HG12	2.14	0.48
1:A:96:THR:HG22	1:A:137:PHE:HB2	1.96	0.48
1:A:263:GLU:HB2	1:A:264:PRO:HD3	1.96	0.47
1:A:271:ARG:NH2	1:A:304:HIS:HB3	2.30	0.47
1:A:32:GLN:O	1:A:36:GLN:HG3	2.15	0.47
1:A:199:CME:SD	1:A:230:TYR:HE1	2.39	0.45
1:A:207:GLU:HA	1:A:244:LYS:O	2.17	0.45
1:A:185:ARG:NH2	1:A:189:LEU:HD11	2.32	0.45
1:A:50[A]:ARG:HD2	1:A:185:ARG:CZ	2.48	0.44
1:A:36:GLN:O	1:A:40:ILE:HG12	2.18	0.43
1:A:271:ARG:HH21	1:A:304:HIS:HB3	1.84	0.43
1:A:263:GLU:HB2	5:A:384:HOH:O	2.18	0.43
1:A:185:ARG:HG2	1:A:185:ARG:NH2	2.34	0.42
1:A:40:ILE:O	1:A:44:GLY:HA3	2.20	0.41
1:A:34:LEU:HD21	1:A:76:THR:HG21	2.03	0.40
1:A:187:LEU:HB2	1:A:188:PRO:HD3	2.03	0.40
1:A:282:LEU:O	1:A:283:ARG:HB2	2.21	0.40

There are no symmetry-related clashes.

## 5.3 Torsion angles [i](#)

### 5.3.1 Protein backbone [i](#)

In the following table, the Percentiles column shows the percent Ramachandran outliers of the chain as a percentile score with respect to all X-ray entries followed by that with respect to entries of similar resolution.

The Analysed column shows the number of residues for which the backbone conformation was analysed, and the total number of residues.

Mol	Chain	Analysed	Favoured	Allowed	Outliers	Percentiles
1	A	256/313 (82%)	233 (91%)	19 (7%)	4 (2%)	<b>9</b> <b>24</b>

All (4) Ramachandran outliers are listed below:

Mol	Chain	Res	Type
1	A	196	HIS

Continued on next page...

*Continued from previous page...*

Mol	Chain	Res	Type
1	A	41	LEU
1	A	134	VAL
1	A	277	PRO

### 5.3.2 Protein sidechains ⓘ

In the following table, the Percentiles column shows the percent sidechain outliers of the chain as a percentile score with respect to all X-ray entries followed by that with respect to entries of similar resolution.

The Analysed column shows the number of residues for which the sidechain conformation was analysed, and the total number of residues.

Mol	Chain	Analysed	Rotameric	Outliers	Percentiles	
1	A	218/267 (82%)	211 (97%)	7 (3%)	39	68

All (7) residues with a non-rotameric sidechain are listed below:

Mol	Chain	Res	Type
1	A	97	ASN
1	A	171	ASN
1	A	182	TRP
1	A	252	LEU
1	A	259	LEU
1	A	282	LEU
1	A	310	GLU

Some sidechains can be flipped to improve hydrogen bonding and reduce clashes. All (8) such sidechains are listed below:

Mol	Chain	Res	Type
1	A	97	ASN
1	A	171	ASN
1	A	183	ASN
1	A	205	ASN
1	A	211	GLN
1	A	239	HIS
1	A	270	GLN
1	A	302	ASN

### 5.3.3 RNA ⓘ

There are no RNA molecules in this entry.

## 5.4 Non-standard residues in protein, DNA, RNA chains ⓘ

4 non-standard protein/DNA/RNA residues are modelled in this entry.

In the following table, the Counts columns list the number of bonds (or angles) for which Mogul statistics could be retrieved, the number of bonds (or angles) that are observed in the model and the number of bonds (or angles) that are defined in the Chemical Component Dictionary. The Link column lists molecule types, if any, to which the group is linked. The Z score for a bond length (or angle) is the number of standard deviations the observed value is removed from the expected value. A bond length (or angle) with  $|Z| > 2$  is considered an outlier worth inspection. RMSZ is the root-mean-square of all Z scores of the bond lengths (or angles).

Mol	Type	Chain	Res	Link	Bond lengths			Bond angles		
					Counts	RMSZ	$\# Z  > 2$	Counts	RMSZ	$\# Z  > 2$
1	CME	A	199	1	8,9,10	0.82	0	5,9,11	0.45	0
1	CME	A	180	1	8,9,10	0.57	0	5,9,11	0.67	0
1	CME	A	195	1	8,9,10	0.54	0	5,9,11	0.54	0
1	CME	A	43	1	8,9,10	0.65	0	5,9,11	0.76	0

In the following table, the Chirals column lists the number of chiral outliers, the number of chiral centers analysed, the number of these observed in the model and the number defined in the Chemical Component Dictionary. Similar counts are reported in the Torsion and Rings columns. '-' means no outliers of that kind were identified.

Mol	Type	Chain	Res	Link	Chirals	Torsions	Rings
1	CME	A	199	1	-	4/5/8/10	-
1	CME	A	180	1	-	2/5/8/10	-
1	CME	A	195	1	-	2/5/8/10	-
1	CME	A	43	1	-	0/5/8/10	-

There are no bond length outliers.

There are no bond angle outliers.

There are no chirality outliers.

All (8) torsion outliers are listed below:

Mol	Chain	Res	Type	Atoms
1	A	180	CME	N-CA-CB-SG
1	A	195	CME	CE-SD-SG-CB

*Continued on next page...*

*Continued from previous page...*

Mol	Chain	Res	Type	Atoms
1	A	199	CME	CE-SD-SG-CB
1	A	195	CME	CZ-CE-SD-SG
1	A	199	CME	N-CA-CB-SG
1	A	199	CME	CZ-CE-SD-SG
1	A	199	CME	CA-CB-SG-SD
1	A	180	CME	CA-CB-SG-SD

There are no ring outliers.

2 monomers are involved in 4 short contacts:

Mol	Chain	Res	Type	Clashes	Symm-Clashes
1	A	199	CME	2	0
1	A	195	CME	2	0

## 5.5 Carbohydrates [i](#)

There are no carbohydrates in this entry.

## 5.6 Ligand geometry [i](#)

4 ligands are modelled in this entry.

In the following table, the Counts columns list the number of bonds (or angles) for which Mogul statistics could be retrieved, the number of bonds (or angles) that are observed in the model and the number of bonds (or angles) that are defined in the Chemical Component Dictionary. The Link column lists molecule types, if any, to which the group is linked. The Z score for a bond length (or angle) is the number of standard deviations the observed value is removed from the expected value. A bond length (or angle) with  $|Z| > 2$  is considered an outlier worth inspection. RMSZ is the root-mean-square of all Z scores of the bond lengths (or angles).

Mol	Type	Chain	Res	Link	Bond lengths			Bond angles		
					Counts	RMSZ	$\# Z  > 2$	Counts	RMSZ	$\# Z  > 2$
4	7PA	A	319[A]	-	10,10,10	3.33	4 (40%)	15,15,15	5.48	4 (26%)
4	7PA	A	319[B]	-	10,10,10	3.35	4 (40%)	15,15,15	5.49	4 (26%)
2	SO4	A	316	-	4,4,4	0.24	0	6,6,6	0.11	0
3	EDO	A	314	-	3,3,3	0.43	0	2,2,2	0.07	0

In the following table, the Chirals column lists the number of chiral outliers, the number of chiral centers analysed, the number of these observed in the model and the number defined in the Chemical Component Dictionary. Similar counts are reported in the Torsion and Rings columns. '-' means no outliers of that kind were identified.

Mol	Type	Chain	Res	Link	Chirals	Torsions	Rings
4	7PA	A	319[A]	-	-	4/8/8/8	-
4	7PA	A	319[B]	-	-	2/8/8/8	-
3	EDO	A	314	-	-	1/1/1/1	-

All (8) bond length outliers are listed below:

Mol	Chain	Res	Type	Atoms	Z	Observed(Å)	Ideal(Å)
4	A	319[A]	7PA	P2-C3	7.37	1.86	1.78
4	A	319[B]	7PA	P2-C3	7.36	1.86	1.78
4	A	319[B]	7PA	P1-C1	6.50	1.85	1.78
4	A	319[A]	7PA	P1-C1	6.37	1.85	1.78
4	A	319[A]	7PA	P2-O1	2.41	1.55	1.50
4	A	319[B]	7PA	P2-O1	2.39	1.55	1.50
4	A	319[B]	7PA	P1-O3	2.37	1.55	1.50
4	A	319[A]	7PA	P1-O3	2.22	1.54	1.50

All (8) bond angle outliers are listed below:

Mol	Chain	Res	Type	Atoms	Z	Observed(°)	Ideal(°)
4	A	319[B]	7PA	P1-C1-C2	13.95	132.45	114.98
4	A	319[A]	7PA	P1-C1-C2	13.93	132.43	114.98
4	A	319[B]	7PA	P2-C3-C2	13.61	132.03	114.98
4	A	319[A]	7PA	P2-C3-C2	13.58	131.99	114.98
4	A	319[B]	7PA	O3-P1-C1	-5.66	100.92	111.40
4	A	319[A]	7PA	O3-P1-C1	-5.62	101.00	111.40
4	A	319[A]	7PA	O1-P2-C3	-5.21	101.76	111.40
4	A	319[B]	7PA	O1-P2-C3	-5.20	101.78	111.40

There are no chirality outliers.

All (7) torsion outliers are listed below:

Mol	Chain	Res	Type	Atoms
4	A	319[A]	7PA	C1-C2-C3-P2
4	A	319[A]	7PA	C2-C3-P2-O1
4	A	319[A]	7PA	C2-C3-P2-O2
4	A	319[A]	7PA	C2-C3-P2-O5
3	A	314	EDO	O1-C1-C2-O2
4	A	319[B]	7PA	P1-C1-C2-C3
4	A	319[B]	7PA	C1-C2-C3-P2

There are no ring outliers.

2 monomers are involved in 5 short contacts:

Mol	Chain	Res	Type	Clashes	Symm-Clashes
4	A	319[A]	7PA	1	0
4	A	319[B]	7PA	4	0

## 5.7 Other polymers [i](#)

There are no such residues in this entry.

## 5.8 Polymer linkage issues [i](#)

There are no chain breaks in this entry.

## 6 Fit of model and data ⓘ

### 6.1 Protein, DNA and RNA chains ⓘ

In the following table, the column labelled ‘#RSRZ> 2’ contains the number (and percentage) of RSRZ outliers, followed by percent RSRZ outliers for the chain as percentile scores relative to all X-ray entries and entries of similar resolution. The OWAB column contains the minimum, median, 95<sup>th</sup> percentile and maximum values of the occupancy-weighted average B-factor per residue. The column labelled ‘Q< 0.9’ lists the number of (and percentage) of residues with an average occupancy less than 0.9.

Mol	Chain	Analysed	<RSRZ>	#RSRZ>2	OWAB(Å <sup>2</sup> )	Q<0.9
1	A	260/313 (83%)	0.43	32 (12%) 4 3	23, 46, 102, 109	1 (0%)

All (32) RSRZ outliers are listed below:

Mol	Chain	Res	Type	RSRZ
1	A	103	SER	8.5
1	A	102	SER	5.6
1	A	129	GLY	5.5
1	A	282	LEU	5.3
1	A	149	MET	5.1
1	A	151	SER	5.0
1	A	106	VAL	4.9
1	A	146	TYR	4.8
1	A	101	LEU	4.8
1	A	26	PRO	4.8
1	A	153	TYR	4.7
1	A	97	ASN	4.5
1	A	144	ALA	4.4
1	A	152	ASP	4.3
1	A	150	GLU	4.0
1	A	130	ASP	3.9
1	A	27	PRO	3.9
1	A	104	LYS	3.7
1	A	148	ASP	3.6
1	A	100	GLU	3.5
1	A	99	LYS	3.4
1	A	96	THR	3.3
1	A	105	GLY	3.2
1	A	94	GLY	2.7
1	A	98	ALA	2.7
1	A	50[A]	ARG	2.7
1	A	131	LEU	2.6

*Continued on next page...*



*Continued from previous page...*

Mol	Chain	Res	Type	RSRZ
1	A	132	GLY	2.4
1	A	156	GLN	2.2
1	A	107	LYS	2.0
1	A	69	ASP	2.0
1	A	141	HIS	2.0

## 6.2 Non-standard residues in protein, DNA, RNA chains [i](#)

In the following table, the Atoms column lists the number of modelled atoms in the group and the number defined in the chemical component dictionary. The B-factors column lists the minimum, median, 95<sup>th</sup> percentile and maximum values of B factors of atoms in the group. The column labelled 'Q< 0.9' lists the number of atoms with occupancy less than 0.9.

Mol	Type	Chain	Res	Atoms	RSCC	RSR	B-factors(Å <sup>2</sup> )	Q<0.9
1	CME	A	199	10/11	0.80	0.31	41,47,58,65	0
1	CME	A	43	10/11	0.83	0.20	52,55,67,67	0
1	CME	A	180	10/11	0.87	0.27	44,53,69,71	0
1	CME	A	195	10/11	0.91	0.29	56,58,67,70	0

## 6.3 Carbohydrates [i](#)

There are no carbohydrates in this entry.

## 6.4 Ligands [i](#)

In the following table, the Atoms column lists the number of modelled atoms in the group and the number defined in the chemical component dictionary. The B-factors column lists the minimum, median, 95<sup>th</sup> percentile and maximum values of B factors of atoms in the group. The column labelled 'Q< 0.9' lists the number of atoms with occupancy less than 0.9.

Mol	Type	Chain	Res	Atoms	RSCC	RSR	B-factors(Å <sup>2</sup> )	Q<0.9
4	7PA	A	319[A]	11/11	0.88	0.37	85,88,96,96	11
4	7PA	A	319[B]	11/11	0.88	0.37	85,88,96,96	11
3	EDO	A	314	4/4	0.95	0.17	32,34,34,35	0
2	SO4	A	316	5/5	0.97	0.14	48,49,51,52	0

## 6.5 Other polymers [i](#)

There are no such residues in this entry.