



# Full wwPDB X-ray Structure Validation Report ⓘ

May 16, 2020 – 01:33 pm BST

PDB ID : 2OOL  
Title : Crystal structure of the chromophore-binding domain of an unusual bacterio-  
phytochrome RpBphP3 from *R. palustris*  
Authors : Yang, X.; Stojkovic, E.A.; Kuk, J.; Moffat, K.  
Deposited on : 2007-01-25  
Resolution : 2.20 Å(reported)

This is a Full wwPDB X-ray Structure Validation Report for a publicly released PDB entry.

We welcome your comments at [validation@mail.wwpdb.org](mailto:validation@mail.wwpdb.org)

A user guide is available at

<https://www.wwpdb.org/validation/2017/XrayValidationReportHelp>

with specific help available everywhere you see the ⓘ symbol.

---

The following versions of software and data (see [references ⓘ](#)) were used in the production of this report:

MolProbity : 4.02b-467  
Mogul : 1.8.5 (274361), CSD as541be (2020)  
Xtriage (Phenix) : 1.13  
EDS : 2.11  
buster-report : 1.1.7 (2018)  
Percentile statistics : 20191225.v01 (using entries in the PDB archive December 25th 2019)  
Refmac : 5.8.0158  
CCP4 : 7.0.044 (Gargrove)  
Ideal geometry (proteins) : Engh & Huber (2001)  
Ideal geometry (DNA, RNA) : Parkinson et al. (1996)  
Validation Pipeline (wwPDB-VP) : 2.11

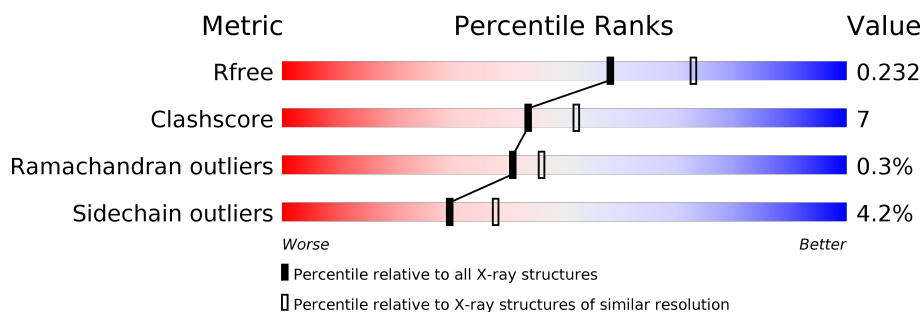
# 1 Overall quality at a glance

The following experimental techniques were used to determine the structure:

*X-RAY DIFFRACTION*

The reported resolution of this entry is 2.20 Å.

Percentile scores (ranging between 0-100) for global validation metrics of the entry are shown in the following graphic. The table shows the number of entries on which the scores are based.



Metric	Whole archive (#Entries)	Similar resolution (#Entries, resolution range(Å))
$R_{free}$	130704	4898 (2.20-2.20)
Clashscore	141614	5594 (2.20-2.20)
Ramachandran outliers	138981	5503 (2.20-2.20)
Sidechain outliers	138945	5504 (2.20-2.20)

The table below summarises the geometric issues observed across the polymeric chains and their fit to the electron density. The red, orange, yellow and green segments on the lower bar indicate the fraction of residues that contain outliers for  $\geq 3$ , 2, 1 and 0 types of geometric quality criteria respectively. A grey segment represents the fraction of residues that are not modelled. The numeric value for each fraction is indicated below the corresponding segment, with a dot representing fractions  $\leq 5\%$ .

Mol	Chain	Length	Quality of chain
1	A	337	
1	B	337	

The following table lists non-polymeric compounds, carbohydrate monomers and non-standard residues in protein, DNA, RNA chains that are outliers for geometric or electron-density-fit criteria:

Mol	Type	Chain	Res	Chirality	Geometry	Clashes	Electron density
2	LBV	B	400	X	-	-	-

## 2 Entry composition [i](#)

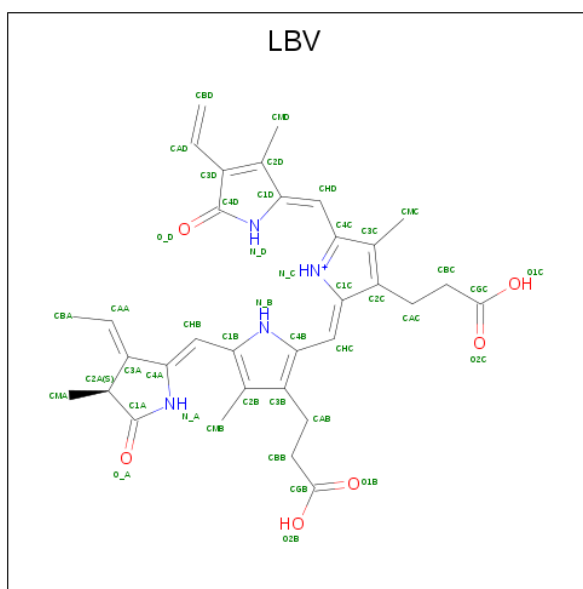
There are 3 unique types of molecules in this entry. The entry contains 5101 atoms, of which 0 are hydrogens and 0 are deuteriums.

In the tables below, the ZeroOcc column contains the number of atoms modelled with zero occupancy, the AltConf column contains the number of residues with at least one atom in alternate conformation and the Trace column contains the number of residues modelled with at most 2 atoms.

- Molecule 1 is a protein called Sensor protein.

Mol	Chain	Residues	Atoms					ZeroOcc	AltConf	Trace
1	A	304	Total	C	N	O	S	15	5	0
			2431	1542	435	445	9			
1	B	298	Total	C	N	O	S	5	3	0
			2368	1501	428	430	9			

- Molecule 2 is 3-[2-[(Z)-[3-(2-carboxyethyl)-5-[(Z)-(4-ethenyl-3-methyl-5-oxidanylidene-pyrro-1-2-ylidene)methyl]-4-methyl-pyrrol-1-ium-2-ylidene]methyl]-5-[(Z)-[(3E)-3-ethylidene-4-methyl-5-oxidanylidene-pyrrolidin-2-ylidene]methyl]-4-methyl-1H-pyrrol-3-yl]propanoic acid (three-letter code: LBV) (formula: C<sub>33</sub>H<sub>37</sub>N<sub>4</sub>O<sub>6</sub>).



Mol	Chain	Residues	Atoms				ZeroOcc	AltConf
2	A	1	Total	C	N	O	0	1
			44	34	4	6		
2	B	1	Total	C	N	O	0	0
			43	33	4	6		

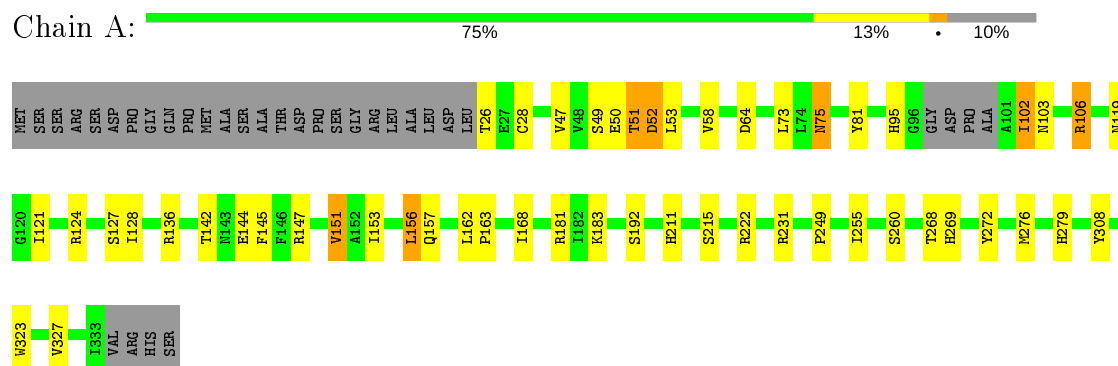
- Molecule 3 is water.

Mol	Chain	Residues	Atoms		ZeroOcc	AltConf
3	A	161	Total 161	O 161	0	0
3	B	54	Total 54	O 54	0	0

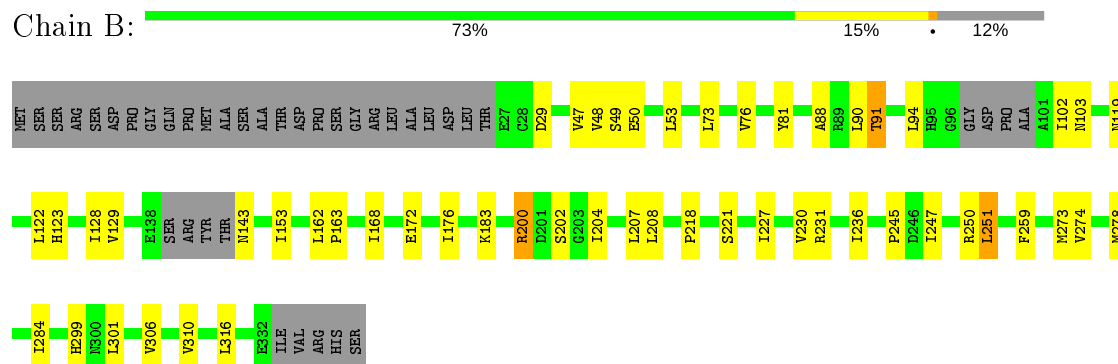
### 3 Residue-property plots

These plots are drawn for all protein, RNA and DNA chains in the entry. The first graphic for a chain summarises the proportions of the various outlier classes displayed in the second graphic. The second graphic shows the sequence view annotated by issues in geometry. Residues are color-coded according to the number of geometric quality criteria for which they contain at least one outlier: green = 0, yellow = 1, orange = 2 and red = 3 or more. Stretches of 2 or more consecutive residues without any outlier are shown as a green connector. Residues present in the sample, but not in the model, are shown in grey.

- Molecule 1: Sensor protein



- Molecule 1: Sensor protein



## 4 Data and refinement statistics

Property	Value	Source
Space group	P 3 2 1	Depositor
Cell constants a, b, c, $\alpha$ , $\beta$ , $\gamma$	151.87Å 151.87Å 76.00Å 90.00° 90.00° 120.00°	Depositor
Resolution (Å)	49.75 – 2.20 49.73 – 2.11	Depositor EDS
% Data completeness (in resolution range)	93.3 (49.75-2.20) 91.0 (49.73-2.11)	Depositor EDS
$R_{merge}$	0.08	Depositor
$R_{sym}$	(Not available)	Depositor
$\langle I/\sigma(I) \rangle$ <sup>1</sup>	2.37 (at 2.10Å)	Xtriage
Refinement program	REFMAC	Depositor
R, $R_{free}$	0.188 , 0.231 0.191 , 0.232	Depositor DCC
$R_{free}$ test set	4457 reflections (7.68%)	wwPDB-VP
Wilson B-factor (Å <sup>2</sup> )	41.8	Xtriage
Anisotropy	0.398	Xtriage
Bulk solvent $k_{sol}$ (e/Å <sup>3</sup> ), $B_{sol}$ (Å <sup>2</sup> )	0.33 , 64.8	EDS
L-test for twinning <sup>2</sup>	$\langle  L  \rangle = 0.49$ , $\langle L^2 \rangle = 0.32$	Xtriage
Estimated twinning fraction	0.033 for -h,-k,l	Xtriage
$F_o, F_c$ correlation	0.94	EDS
Total number of atoms	5101	wwPDB-VP
Average B, all atoms (Å <sup>2</sup> )	58.0	wwPDB-VP

Xtriage's analysis on translational NCS is as follows: *The largest off-origin peak in the Patterson function is 3.26% of the height of the origin peak. No significant pseudotranslation is detected.*

<sup>1</sup>Intensities estimated from amplitudes.

<sup>2</sup>Theoretical values of  $\langle |L| \rangle$ ,  $\langle L^2 \rangle$  for acentric reflections are 0.5, 0.333 respectively for untwinned datasets, and 0.375, 0.2 for perfectly twinned datasets.

## 5 Model quality [i](#)

### 5.1 Standard geometry [i](#)

Bond lengths and bond angles in the following residue types are not validated in this section: LBV

The Z score for a bond length (or angle) is the number of standard deviations the observed value is removed from the expected value. A bond length (or angle) with  $|Z| > 5$  is considered an outlier worth inspection. RMSZ is the root-mean-square of all Z scores of the bond lengths (or angles).

Mol	Chain	Bond lengths		Bond angles	
		RMSZ	$\# Z  > 5$	RMSZ	$\# Z  > 5$
1	A	0.84	3/2492 (0.1%)	0.85	3/3402 (0.1%)
1	B	0.59	0/2428	0.68	0/3311
All	All	0.73	3/4920 (0.1%)	0.77	3/6713 (0.0%)

Chiral center outliers are detected by calculating the chiral volume of a chiral center and verifying if the center is modelled as a planar moiety or with the opposite hand. A planarity outlier is detected by checking planarity of atoms in a peptide group, atoms in a mainchain group or atoms of a sidechain that are expected to be planar.

Mol	Chain	#Chirality outliers	#Planarity outliers
1	B	0	1

All (3) bond length outliers are listed below:

Mol	Chain	Res	Type	Atoms	Z	Observed(Å)	Ideal(Å)
1	A	144[A]	GLU	CB-CG	6.38	1.64	1.52
1	A	144[B]	GLU	CB-CG	6.38	1.64	1.52
1	A	28	CYS	CB-SG	-5.78	1.72	1.81

All (3) bond angle outliers are listed below:

Mol	Chain	Res	Type	Atoms	Z	Observed(°)	Ideal(°)
1	A	106	ARG	NE-CZ-NH2	-8.35	116.13	120.30
1	A	106	ARG	NE-CZ-NH1	7.34	123.97	120.30
1	A	222	ARG	NE-CZ-NH2	-5.20	117.70	120.30

There are no chirality outliers.

All (1) planarity outliers are listed below:

Mol	Chain	Res	Type	Group
1	B	143	ASN	Peptide

## 5.2 Too-close contacts ⓘ

In the following table, the Non-H and H(model) columns list the number of non-hydrogen atoms and hydrogen atoms in the chain respectively. The H(added) column lists the number of hydrogen atoms added and optimized by MolProbity. The Clashes column lists the number of clashes within the asymmetric unit, whereas Symm-Clashes lists symmetry related clashes.

Mol	Chain	Non-H	H(model)	H(added)	Clashes	Symm-Clashes
1	A	2431	0	2416	31	1
1	B	2368	0	2351	31	0
2	A	44	0	8	2	0
2	B	43	0	33	2	0
3	A	161	0	0	3	0
3	B	54	0	0	2	0
All	All	5101	0	4808	64	1

The all-atom clashscore is defined as the number of clashes found per 1000 atoms (including hydrogen atoms). The all-atom clashscore for this structure is 7.

All (64) close contacts within the same asymmetric unit are listed below, sorted by their clash magnitude.

Atom-1	Atom-2	Interatomic distance (Å)	Clash overlap (Å)
1:B:73:LEU:O	1:B:76:VAL:HG12	1.63	0.98
1:A:51:THR:HG23	1:A:52:ASP:H	1.43	0.82
1:A:215:SER:O	2:A:400[B]:LBV:HMA3	1.86	0.76
1:A:51:THR:HG23	1:A:52:ASP:OD1	1.88	0.72
1:B:236:ILE:HD11	1:B:278:MET:O	1.88	0.72
1:B:103:ASN:HD21	1:B:122:LEU:H	1.42	0.67
1:B:236:ILE:HD11	1:B:273:MET:HB3	1.75	0.66
1:B:204:ILE:HD12	1:B:301:LEU:HD21	1.77	0.65
1:B:123[A]:HIS:CD2	3:B:402:HOH:O	2.49	0.65
1:B:250:ARG:HB2	1:B:251:LEU:HD13	1.80	0.63
1:B:236:ILE:CD1	1:B:278:MET:O	2.48	0.61
1:A:102:ILE:HG12	1:A:103:ASN:N	2.19	0.57
1:A:181:ARG:HE	1:A:183:LYS:NZ	2.04	0.56
1:B:204:ILE:HD12	1:B:301:LEU:CD2	2.35	0.56
1:B:123[A]:HIS:CE1	1:B:259:PHE:O	2.59	0.55
1:B:103:ASN:ND2	1:B:122:LEU:H	2.03	0.55
1:B:48:VAL:HG23	1:B:129:VAL:HB	1.88	0.55

*Continued on next page...*



*Continued from previous page...*

Atom-1	Atom-2	Interatomic distance (Å)	Clash overlap (Å)
1:A:181:ARG:HE	1:A:183:LYS:HZ3	1.53	0.54
1:B:245:PRO:HB2	1:B:247:ILE:HD12	1.89	0.54
1:A:121:ILE:HD12	1:A:308:TYR:CD1	2.44	0.53
1:A:26:THR:O	1:A:26:THR:HG22	2.11	0.51
1:A:156:LEU:HD13	1:A:168:ILE:CG2	2.40	0.51
1:B:123[A]:HIS:HD2	3:B:402:HOH:O	1.87	0.51
1:A:64:ASP:HB2	3:A:491:HOH:O	2.09	0.51
1:A:73:LEU:CD2	1:A:81:TYR:OH	2.61	0.49
1:B:183:LYS:HZ1	1:B:299:HIS:CE1	2.31	0.49
1:A:49:SER:O	1:A:53:LEU:HA	2.13	0.48
1:A:153:ILE:O	1:A:157:GLN:HG3	2.14	0.47
1:B:306:VAL:HB	1:B:310:VAL:HG21	1.95	0.47
2:B:400:LBV:N_D	2:B:400:LBV:HMC1	2.30	0.47
1:A:142:THR:O	1:A:145:PHE:HB3	2.15	0.47
1:A:106:ARG:HG3	1:A:136:ARG:NH1	2.30	0.46
1:B:153:ILE:HD11	1:B:316:LEU:HG	1.96	0.46
1:A:50:GLU:OE1	1:A:124:ARG:NE	2.49	0.46
1:B:49:SER:O	1:B:53:LEU:HD23	2.15	0.46
1:A:49:SER:O	1:A:53:LEU:HD23	2.16	0.45
1:A:47:VAL:HG21	1:A:255:ILE:HD13	1.98	0.45
1:A:147:ARG:O	1:A:151:VAL:HG13	2.16	0.45
1:B:218:PRO:O	1:B:221:SER:HB2	2.16	0.45
1:B:88:ALA:O	1:B:91:THR:HG22	2.17	0.45
1:A:128:ILE:HG21	1:A:249:PRO:HD2	1.98	0.45
1:B:230:VAL:HG13	1:B:284:ILE:HD13	1.98	0.45
1:B:47:VAL:HG13	1:B:128:ILE:HD12	1.99	0.45
1:A:192:SER:HB2	1:A:211[B]:HIS:CE1	2.53	0.43
1:A:121:ILE:HD12	1:A:308:TYR:CE1	2.53	0.43
1:A:268:THR:HG22	2:A:400[A]:LBV:HMA2	2.01	0.43
1:A:75:ASN:HD22	1:A:75:ASN:HA	1.66	0.43
2:B:400:LBV:O_D	2:B:400:LBV:HBD1	2.18	0.43
1:B:306:VAL:HB	1:B:310:VAL:CG2	2.48	0.42
1:A:151:VAL:HG22	3:A:515:HOH:O	2.19	0.42
1:A:323:TRP:O	1:A:327:VAL:HG23	2.20	0.42
1:B:168:ILE:O	1:B:172:GLU:HG2	2.19	0.42
1:A:279:HIS:HE1	3:A:499:HOH:O	2.03	0.41
1:B:119:ASN:HA	1:B:119:ASN:HD22	1.67	0.41
1:B:162:LEU:HB3	1:B:163:PRO:HD3	2.01	0.41
1:B:200:ARG:NE	1:B:204:ILE:O	2.54	0.41
1:B:236:ILE:HG21	1:B:274:VAL:HG22	2.03	0.41
1:A:269:HIS:O	1:A:272:TYR:HB3	2.21	0.41

*Continued on next page...*

Continued from previous page...

Atom-1	Atom-2	Interatomic distance (Å)	Clash overlap (Å)
1:B:76:VAL:HG11	1:B:81:TYR:HE1	1.85	0.41
1:A:156:LEU:HD13	1:A:168:ILE:HG22	2.03	0.41
1:A:53:LEU:HD23	1:A:53:LEU:HA	1.85	0.41
1:A:162:LEU:HB3	1:A:163:PRO:HD3	2.02	0.41
1:B:172:GLU:O	1:B:176:ILE:HG23	2.20	0.41
1:B:90:LEU:O	1:B:94:LEU:HD12	2.20	0.40

All (1) symmetry-related close contacts are listed below. The label for Atom-2 includes the symmetry operator and encoded unit-cell translations to be applied.

Atom-1	Atom-2	Interatomic distance (Å)	Clash overlap (Å)
1:A:106:ARG:NH2	1:A:106:ARG:NH2[5_556]	1.99	0.21

## 5.3 Torsion angles [i](#)

### 5.3.1 Protein backbone [i](#)

In the following table, the Percentiles column shows the percent Ramachandran outliers of the chain as a percentile score with respect to all X-ray entries followed by that with respect to entries of similar resolution.

The Analysed column shows the number of residues for which the backbone conformation was analysed, and the total number of residues.

Mol	Chain	Analysed	Favoured	Allowed	Outliers	Percentiles	
1	A	305/337 (90%)	298 (98%)	5 (2%)	2 (1%)	22	22
1	B	295/337 (88%)	288 (98%)	7 (2%)	0	100	100
All	All	600/674 (89%)	586 (98%)	12 (2%)	2 (0%)	41	46

All (2) Ramachandran outliers are listed below:

Mol	Chain	Res	Type
1	A	51	THR
1	A	95	HIS

### 5.3.2 Protein sidechains [i](#)

In the following table, the Percentiles column shows the percent sidechain outliers of the chain as a percentile score with respect to all X-ray entries followed by that with respect to entries of similar

resolution.

The Analysed column shows the number of residues for which the sidechain conformation was analysed, and the total number of residues.

Mol	Chain	Analysed	Rotameric	Outliers	Percentiles	
1	A	267/288 (93%)	256 (96%)	11 (4%)	30	39
1	B	259/288 (90%)	248 (96%)	11 (4%)	30	38
All	All	526/576 (91%)	504 (96%)	22 (4%)	30	38

All (22) residues with a non-rotameric sidechain are listed below:

Mol	Chain	Res	Type
1	A	52	ASP
1	A	58	VAL
1	A	75	ASN
1	A	102	ILE
1	A	119	ASN
1	A	127	SER
1	A	151	VAL
1	A	156	LEU
1	A	231	ARG
1	A	260	SER
1	A	276	MET
1	B	29	ASP
1	B	50	GLU
1	B	91	THR
1	B	102	ILE
1	B	200	ARG
1	B	202	SER
1	B	207	LEU
1	B	208	LEU
1	B	227	ILE
1	B	231	ARG
1	B	251	LEU

Some sidechains can be flipped to improve hydrogen bonding and reduce clashes. All (6) such sidechains are listed below:

Mol	Chain	Res	Type
1	A	75	ASN
1	A	119	ASN
1	A	186	GLN
1	B	75	ASN

*Continued on next page...*

*Continued from previous page...*

Mol	Chain	Res	Type
1	B	103	ASN
1	B	119	ASN

### 5.3.3 RNA ⓘ

There are no RNA molecules in this entry.

## 5.4 Non-standard residues in protein, DNA, RNA chains ⓘ

There are no non-standard protein/DNA/RNA residues in this entry.

## 5.5 Carbohydrates ⓘ

There are no carbohydrates in this entry.

## 5.6 Ligand geometry ⓘ

3 ligands are modelled in this entry.

In the following table, the Counts columns list the number of bonds (or angles) for which Mogul statistics could be retrieved, the number of bonds (or angles) that are observed in the model and the number of bonds (or angles) that are defined in the Chemical Component Dictionary. The Link column lists molecule types, if any, to which the group is linked. The Z score for a bond length (or angle) is the number of standard deviations the observed value is removed from the expected value. A bond length (or angle) with  $|Z| > 2$  is considered an outlier worth inspection. RMSZ is the root-mean-square of all Z scores of the bond lengths (or angles).

Mol	Type	Chain	Res	Link	Bond lengths			Bond angles		
					Counts	RMSZ	$\# Z  > 2$	Counts	RMSZ	$\# Z  > 2$
2	LBV	B	400	1	36,46,46	2.05	10 (27%)	41,67,67	1.91	11 (26%)
2	LBV	A	400[B]	-	36,46,46	2.20	11 (30%)	41,67,67	1.73	10 (24%)
2	LBV	A	400[A]	-	36,46,46	2.20	11 (30%)	41,67,67	1.73	10 (24%)

In the following table, the Chirals column lists the number of chiral outliers, the number of chiral centers analysed, the number of these observed in the model and the number defined in the Chemical Component Dictionary. Similar counts are reported in the Torsion and Rings columns. '-' means no outliers of that kind were identified.

Mol	Type	Chain	Res	Link	Chirals	Torsions	Rings
2	LBV	B	400	1	1/1/14/22	5/22/74/74	0/4/4/4
2	LBV	A	400[B]	-	-	4/22/74/74	0/4/4/4
2	LBV	A	400[A]	-	-	4/22/74/74	0/4/4/4

All (32) bond length outliers are listed below:

Mol	Chain	Res	Type	Atoms	Z	Observed(Å)	Ideal(Å)
2	A	400[B]	LBV	CHC-C1C	7.93	1.41	1.35
2	A	400[A]	LBV	CHC-C1C	7.93	1.41	1.35
2	B	400	LBV	CHC-C1C	6.97	1.40	1.35
2	B	400	LBV	CHB-C4A	3.94	1.42	1.34
2	A	400[B]	LBV	CAD-C3D	-3.51	1.37	1.47
2	A	400[A]	LBV	CAD-C3D	-3.51	1.37	1.47
2	A	400[B]	LBV	CHB-C4A	3.28	1.41	1.34
2	A	400[A]	LBV	CHB-C4A	3.28	1.41	1.34
2	A	400[B]	LBV	C1D-N_D	-3.16	1.32	1.37
2	A	400[A]	LBV	C1D-N_D	-3.16	1.32	1.37
2	A	400[B]	LBV	CAA-C3A	3.05	1.41	1.33
2	A	400[A]	LBV	CAA-C3A	3.05	1.41	1.33
2	B	400	LBV	C3D-C4D	-3.04	1.38	1.47
2	B	400	LBV	C1C-C2C	-3.00	1.40	1.45
2	B	400	LBV	CAD-C3D	-2.81	1.39	1.47
2	B	400	LBV	CAA-C3A	2.64	1.40	1.33
2	A	400[B]	LBV	C1C-C2C	-2.62	1.41	1.45
2	A	400[A]	LBV	C1C-C2C	-2.62	1.41	1.45
2	B	400	LBV	C1D-C2D	-2.49	1.40	1.45
2	A	400[B]	LBV	C3D-C4D	-2.42	1.40	1.47
2	A	400[A]	LBV	C3D-C4D	-2.42	1.40	1.47
2	B	400	LBV	C4C-C3C	-2.29	1.40	1.45
2	A	400[B]	LBV	C4C-C3C	-2.24	1.41	1.45
2	A	400[A]	LBV	C4C-C3C	-2.24	1.41	1.45
2	B	400	LBV	C1D-N_D	-2.14	1.34	1.37
2	A	400[B]	LBV	C4A-N_A	-2.12	1.34	1.37
2	A	400[A]	LBV	C4A-N_A	-2.12	1.34	1.37
2	A	400[B]	LBV	C4D-N_D	-2.03	1.33	1.38
2	A	400[A]	LBV	C4D-N_D	-2.03	1.33	1.38
2	B	400	LBV	C1C-N_C	-2.03	1.34	1.38
2	A	400[B]	LBV	C1D-C2D	-2.01	1.41	1.45
2	A	400[A]	LBV	C1D-C2D	-2.01	1.41	1.45

All (31) bond angle outliers are listed below:

Mol	Chain	Res	Type	Atoms	Z	Observed(°)	Ideal(°)
2	A	400[B]	LBV	CMD-C2D-C1D	4.03	129.19	124.17
2	A	400[A]	LBV	CMD-C2D-C1D	4.03	129.19	124.17
2	B	400	LBV	CHB-C4A-C3A	-4.00	119.90	127.12
2	B	400	LBV	O_A-C1A-C2A	-3.69	122.72	126.28
2	B	400	LBV	CHD-C1D-C2D	-3.60	119.82	126.95
2	A	400[B]	LBV	CAC-C2C-C1C	3.55	131.30	125.01
2	A	400[A]	LBV	CAC-C2C-C1C	3.55	131.30	125.01
2	B	400	LBV	C4B-CHC-C1C	-3.52	124.60	128.81
2	B	400	LBV	CHD-C1D-N_D	3.34	133.22	126.06
2	A	400[B]	LBV	C1C-N_C-C4C	3.21	112.56	106.51
2	A	400[A]	LBV	C1C-N_C-C4C	3.21	112.56	106.51
2	B	400	LBV	C1C-N_C-C4C	3.16	112.47	106.51
2	A	400[B]	LBV	CMC-C3C-C4C	3.11	129.85	125.06
2	A	400[A]	LBV	CMC-C3C-C4C	3.11	129.85	125.06
2	A	400[B]	LBV	CHB-C4A-C3A	-3.11	121.51	127.12
2	A	400[A]	LBV	CHB-C4A-C3A	-3.11	121.51	127.12
2	A	400[B]	LBV	CAC-C2C-C3C	-3.10	122.10	127.88
2	A	400[A]	LBV	CAC-C2C-C3C	-3.10	122.10	127.88
2	B	400	LBV	C3D-C4D-N_D	2.78	109.33	106.19
2	B	400	LBV	C2A-C3A-C4A	2.78	110.86	107.81
2	B	400	LBV	CMD-C2D-C1D	2.65	127.48	124.17
2	B	400	LBV	CAB-CBB-CGB	-2.58	108.35	112.67
2	A	400[B]	LBV	C2C-C1C-N_C	-2.42	106.53	110.05
2	A	400[A]	LBV	C2C-C1C-N_C	-2.42	106.53	110.05
2	A	400[B]	LBV	CHD-C1D-C2D	-2.41	122.17	126.95
2	A	400[A]	LBV	CHD-C1D-C2D	-2.41	122.17	126.95
2	A	400[B]	LBV	C3C-C4C-N_C	-2.08	106.09	110.53
2	A	400[A]	LBV	C3C-C4C-N_C	-2.08	106.09	110.53
2	B	400	LBV	C3C-C4C-N_C	-2.03	106.20	110.53
2	A	400[B]	LBV	CAA-C3A-C4A	-2.01	123.93	126.36
2	A	400[A]	LBV	CAA-C3A-C4A	-2.01	123.93	126.36

All (1) chirality outliers are listed below:

Mol	Chain	Res	Type	Atom
2	B	400	LBV	C2A

All (13) torsion outliers are listed below:

Mol	Chain	Res	Type	Atoms
2	B	400	LBV	N_B-C1B-CHB-C4A
2	B	400	LBV	N_C-C4C-CHD-C1D
2	A	400[B]	LBV	N_C-C4C-CHD-C1D

*Continued on next page...*

*Continued from previous page...*

Mol	Chain	Res	Type	Atoms
2	A	400[A]	LBV	N_C-C4C-CHD-C1D
2	B	400	LBV	C3C-C4C-CHD-C1D
2	A	400[B]	LBV	C3C-C4C-CHD-C1D
2	A	400[A]	LBV	C3C-C4C-CHD-C1D
2	B	400	LBV	N_D-C1D-CHD-C4C
2	A	400[B]	LBV	N_D-C1D-CHD-C4C
2	A	400[A]	LBV	N_D-C1D-CHD-C4C
2	B	400	LBV	C2D-C1D-CHD-C4C
2	A	400[B]	LBV	C2D-C1D-CHD-C4C
2	A	400[A]	LBV	C2D-C1D-CHD-C4C

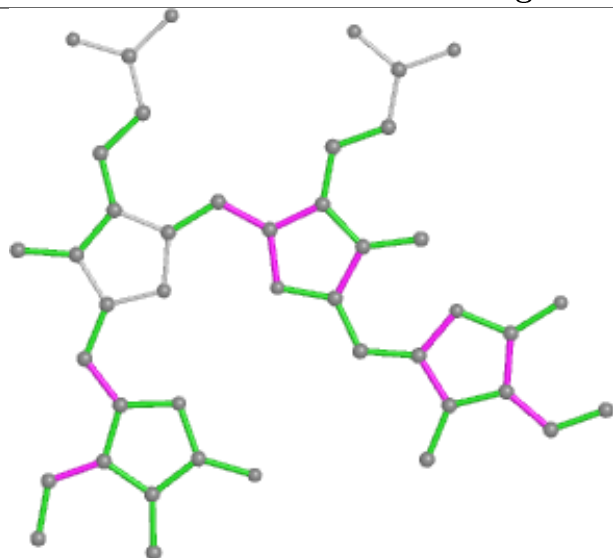
There are no ring outliers.

3 monomers are involved in 4 short contacts:

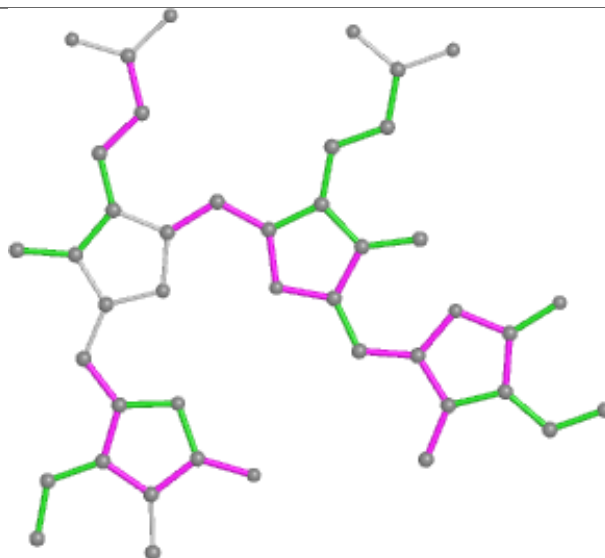
Mol	Chain	Res	Type	Clashes	Symm-Clashes
2	B	400	LBV	2	0
2	A	400[B]	LBV	1	0
2	A	400[A]	LBV	1	0

The following is a two-dimensional graphical depiction of Mogul quality analysis of bond lengths, bond angles, torsion angles, and ring geometry for all instances of the Ligand of Interest. In addition, ligands with molecular weight > 250 and outliers as shown on the validation Tables will also be included. For torsion angles, if less than 5% of the Mogul distribution of torsion angles is within 10 degrees of the torsion angle in question, then that torsion angle is considered an outlier. Any bond that is central to one or more torsion angles identified as an outlier by Mogul will be highlighted in the graph. For rings, the root-mean-square deviation (RMSD) between the ring in question and similar rings identified by Mogul is calculated over all ring torsion angles. If the average RMSD is greater than 60 degrees and the minimal RMSD between the ring in question and any Mogul-identified rings is also greater than 60 degrees, then that ring is considered an outlier. The outliers are highlighted in purple. The color gray indicates Mogul did not find sufficient equivalents in the CSD to analyse the geometry.

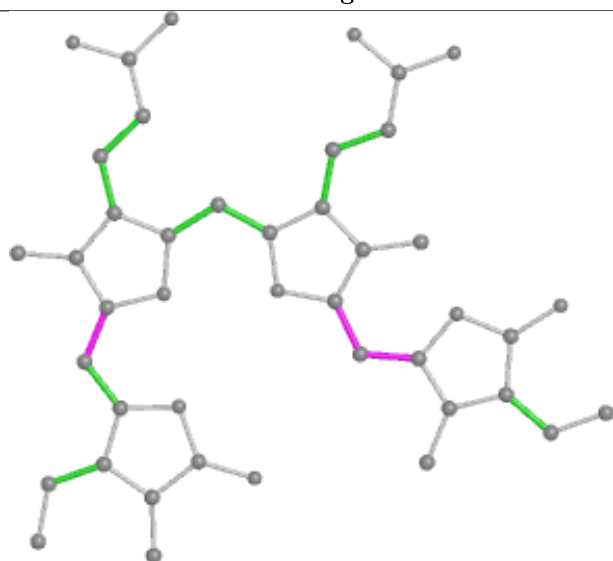
## Ligand LBV B 400



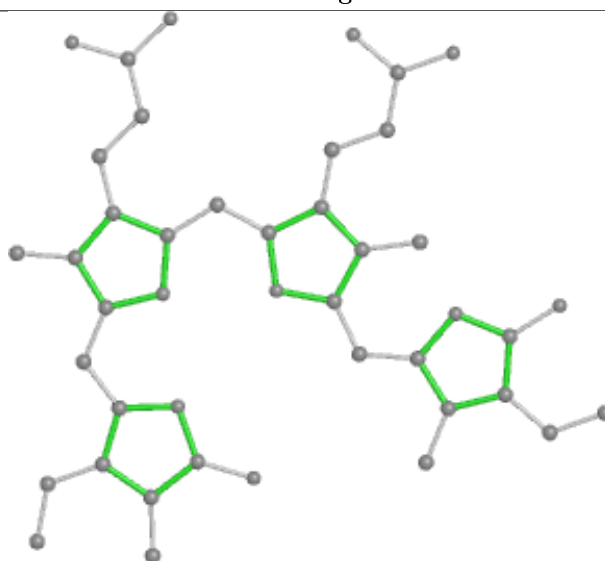
Bond lengths



Bond angles



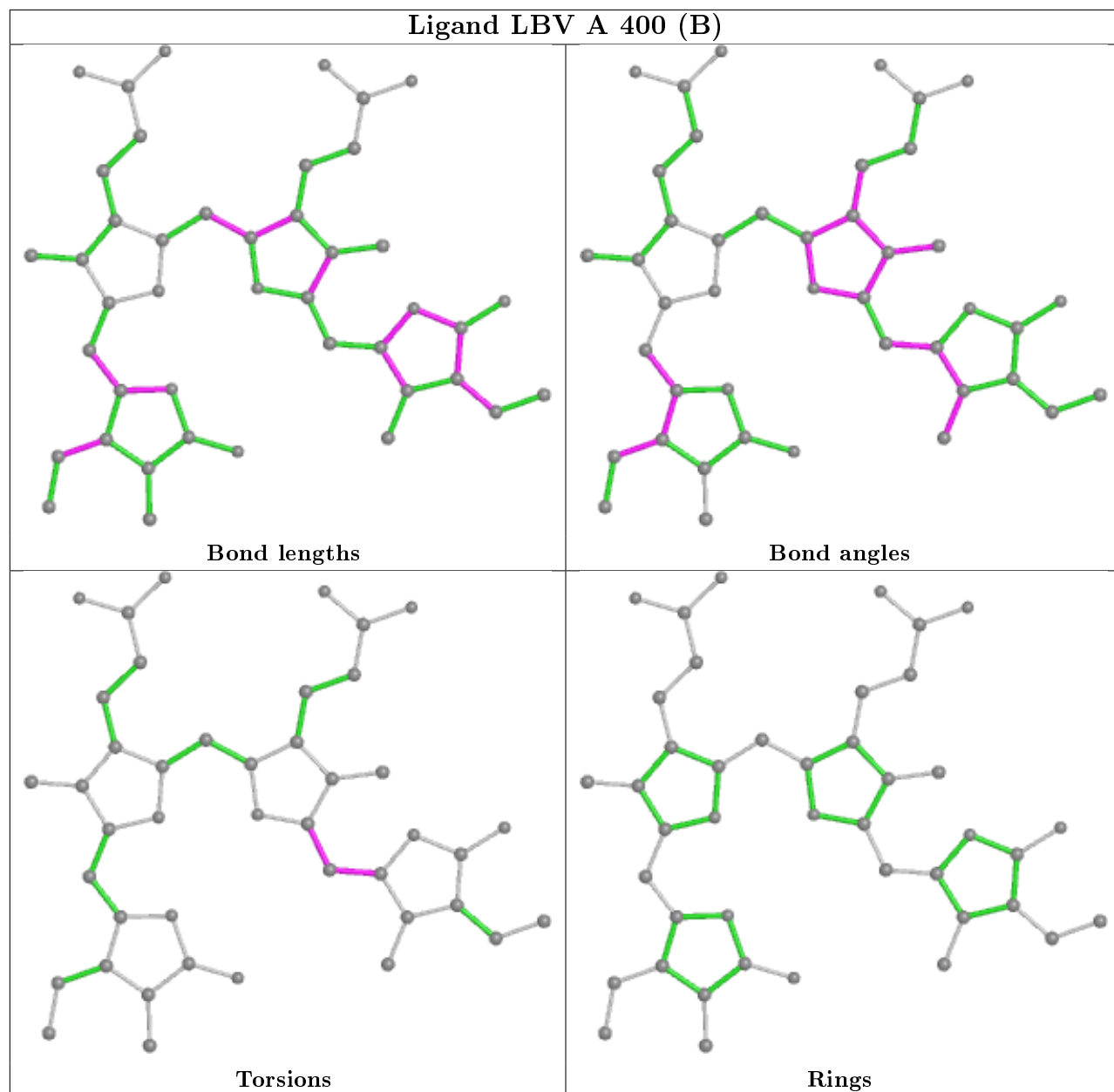
Torsions

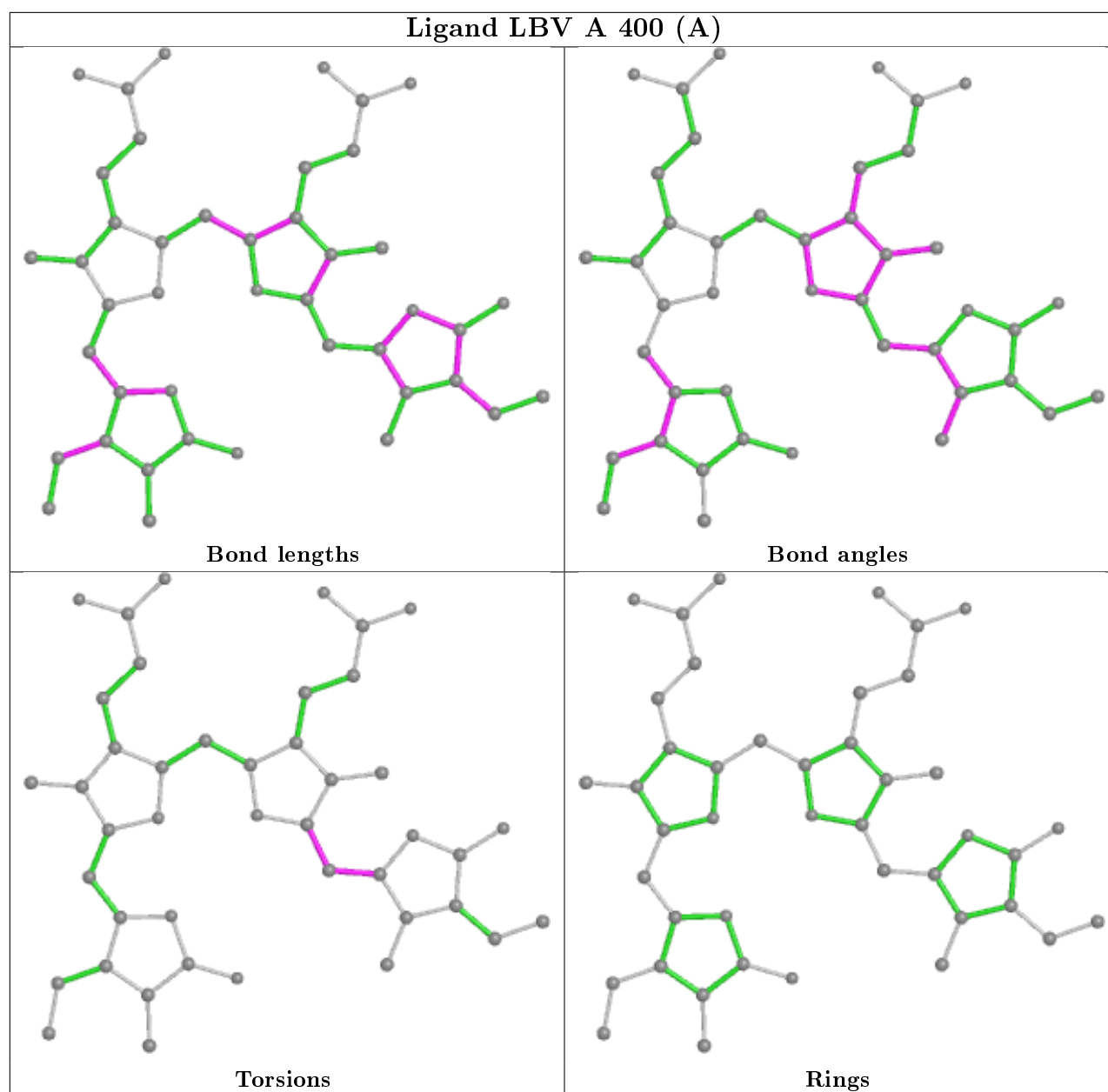


Rings



## Ligand LBV A 400 (B)





## 5.7 Other polymers [i](#)

There are no such residues in this entry.

## 5.8 Polymer linkage issues [i](#)

There are no chain breaks in this entry.

## 6 Fit of model and data ⓘ

### 6.1 Protein, DNA and RNA chains ⓘ

Unable to reproduce the depositors R factor - this section is therefore empty.

### 6.2 Non-standard residues in protein, DNA, RNA chains ⓘ

Unable to reproduce the depositors R factor - this section is therefore empty.

### 6.3 Carbohydrates ⓘ

Unable to reproduce the depositors R factor - this section is therefore empty.

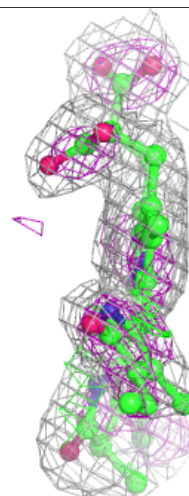
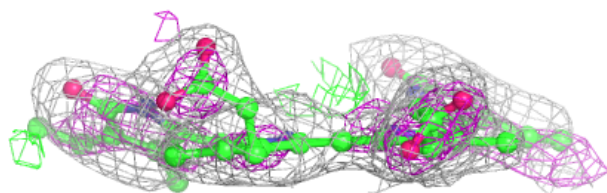
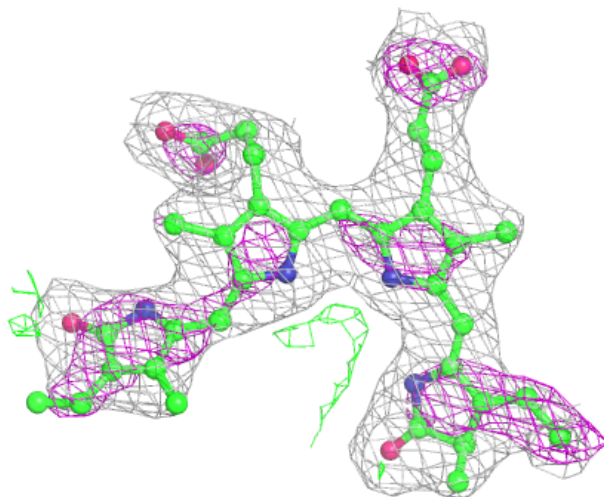
### 6.4 Ligands ⓘ

Unable to reproduce the depositors R factor - this section is therefore empty.

The following is a graphical depiction of the model fit to experimental electron density of all instances of the Ligand of Interest. In addition, ligands with molecular weight > 250 and outliers as shown on the geometry validation Tables will also be included. Each fit is shown from different orientation to approximate a three-dimensional view.

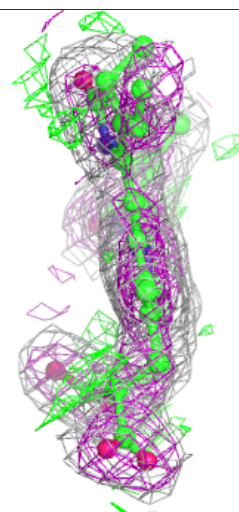
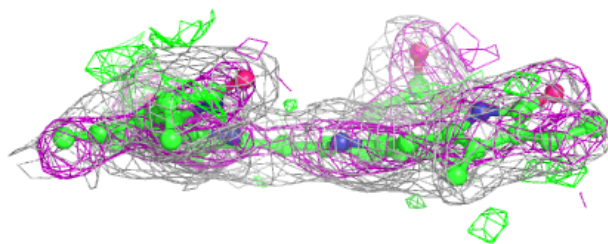
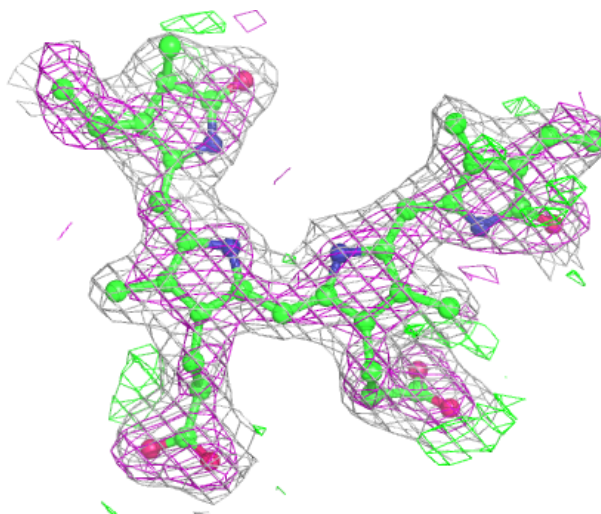
**Electron density around LBV B 400:**

$2mF_o-DF_c$  (at 0.7 rmsd) in gray  
 $mF_o-DF_c$  (at 3 rmsd) in purple (negative)  
and green (positive)



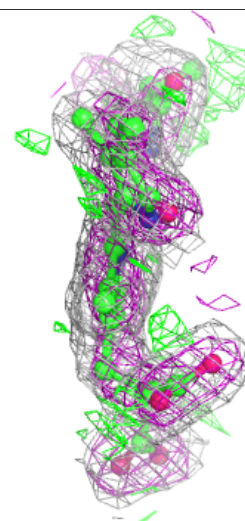
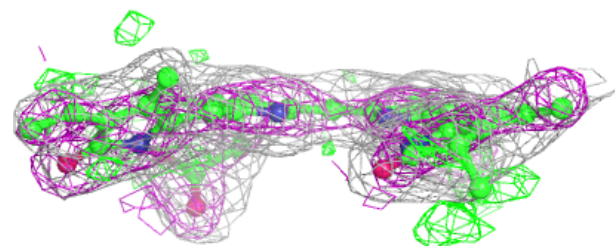
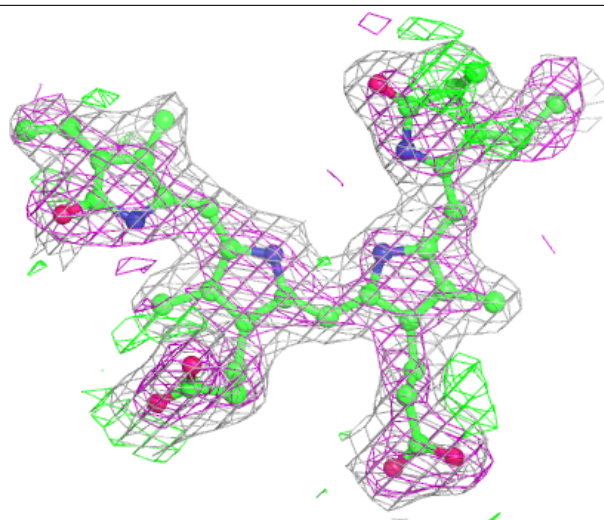
**Electron density around LBV A 400 (B):**

$2mF_o-DF_c$  (at 0.7 rmsd) in gray  
 $mF_o-DF_c$  (at 3 rmsd) in purple (negative)  
and green (positive)



**Electron density around LBV A 400 (A):**

$2mF_o-DF_c$  (at 0.7 rmsd) in gray  
 $mF_o-DF_c$  (at 3 rmsd) in purple (negative)  
and green (positive)



## 6.5 Other polymers [i](#)

Unable to reproduce the depositor's R factor - this section is therefore empty.