



Full wwPDB X-ray Structure Validation Report ⓘ

May 25, 2020 – 03:53 pm BST

PDB ID : 3OOK
Title : Crystal structure of human FXR in complex with 4-({(2S)-2-[2-(4-chlorophenyl)-5,6-difluoro-1H-benzimidazol-1-yl]-2-cyclohexylacetyl}amino)-3,5-difluorobenzoic acid
Authors : Rudolph, M.G.
Deposited on : 2010-08-31
Resolution : 2.29 Å(reported)

This is a Full wwPDB X-ray Structure Validation Report for a publicly released PDB entry.

We welcome your comments at validation@mail.wwpdb.org

A user guide is available at

<https://www.wwpdb.org/validation/2017/XrayValidationReportHelp>

with specific help available everywhere you see the ⓘ symbol.

The following versions of software and data (see [references ⓘ](#)) were used in the production of this report:

MolProbity : 4.02b-467
Mogul : 1.8.5 (274361), CSD as541be (2020)
Xtriage (Phenix) : 1.13
EDS : 2.11
buster-report : 1.1.7 (2018)
Percentile statistics : 20191225.v01 (using entries in the PDB archive December 25th 2019)
Refmac : 5.8.0158
CCP4 : 7.0.044 (Gargrove)
Ideal geometry (proteins) : Engh & Huber (2001)
Ideal geometry (DNA, RNA) : Parkinson et al. (1996)
Validation Pipeline (wwPDB-VP) : 2.11

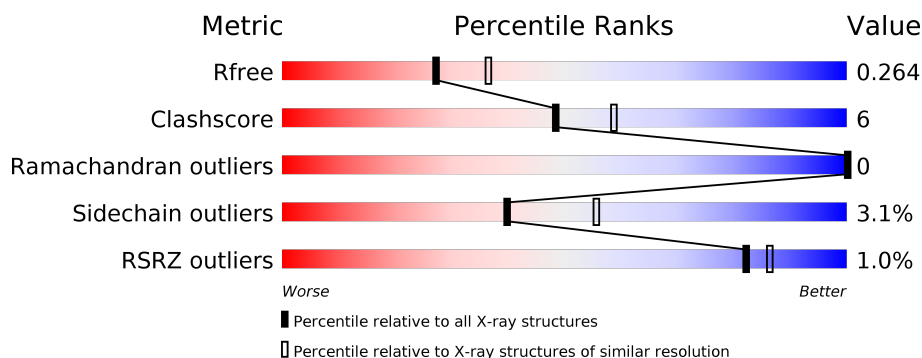
1 Overall quality at a glance

The following experimental techniques were used to determine the structure:

X-RAY DIFFRACTION

The reported resolution of this entry is 2.29 Å.

Percentile scores (ranging between 0-100) for global validation metrics of the entry are shown in the following graphic. The table shows the number of entries on which the scores are based.



Metric	Whole archive (#Entries)	Similar resolution (#Entries, resolution range(Å))
R_{free}	130704	5042 (2.30-2.30)
Clashscore	141614	5643 (2.30-2.30)
Ramachandran outliers	138981	5575 (2.30-2.30)
Sidechain outliers	138945	5575 (2.30-2.30)
RSRZ outliers	127900	4938 (2.30-2.30)

The table below summarises the geometric issues observed across the polymeric chains and their fit to the electron density. The red, orange, yellow and green segments on the lower bar indicate the fraction of residues that contain outliers for ≥ 3 , 2, 1 and 0 types of geometric quality criteria respectively. A grey segment represents the fraction of residues that are not modelled. The numeric value for each fraction is indicated below the corresponding segment, with a dot representing fractions $\leq 5\%$. The upper red bar (where present) indicates the fraction of residues that have poor fit to the electron density. The numeric value is given above the bar.

Mol	Chain	Length	Quality of chain
1	A	233	<div> <div style="width: 100%; height: 10px; background: linear-gradient(to right, red 1%, orange 1%, yellow 16%, green 82%);"></div> <div style="display: flex; justify-content: space-between; margin-top: 2px;"> % 82% 16% .. </div> </div>
1	C	233	<div> <div style="width: 100%; height: 10px; background: linear-gradient(to right, red 1%, orange 1%, yellow 14%, green 84%);"></div> <div style="display: flex; justify-content: space-between; margin-top: 2px;"> % 84% 14% .. </div> </div>
2	B	14	<div> <div style="width: 100%; height: 10px; background: linear-gradient(to right, green 79%, yellow 7%, grey 14%);"></div> <div style="display: flex; justify-content: space-between; margin-top: 2px;"> 79% 7% 14% </div> </div>
2	D	14	<div> <div style="width: 100%; height: 10px; background: linear-gradient(to right, green 64%, yellow 14%, grey 21%);"></div> <div style="display: flex; justify-content: space-between; margin-top: 2px;"> 64% 14% 21% </div> </div>

2 Entry composition

There are 4 unique types of molecules in this entry. The entry contains 4212 atoms, of which 0 are hydrogens and 0 are deuteriums.

In the tables below, the ZeroOcc column contains the number of atoms modelled with zero occupancy, the AltConf column contains the number of residues with at least one atom in alternate conformation and the Trace column contains the number of residues modelled with at most 2 atoms.

- Molecule 1 is a protein called Bile acid receptor.

Mol	Chain	Residues	Atoms					ZeroOcc	AltConf	Trace
1	A	230	Total	C	N	O	S	0	0	0
			1881	1203	317	349	12			
1	C	230	Total	C	N	O	S	0	0	0
			1881	1203	317	349	12			

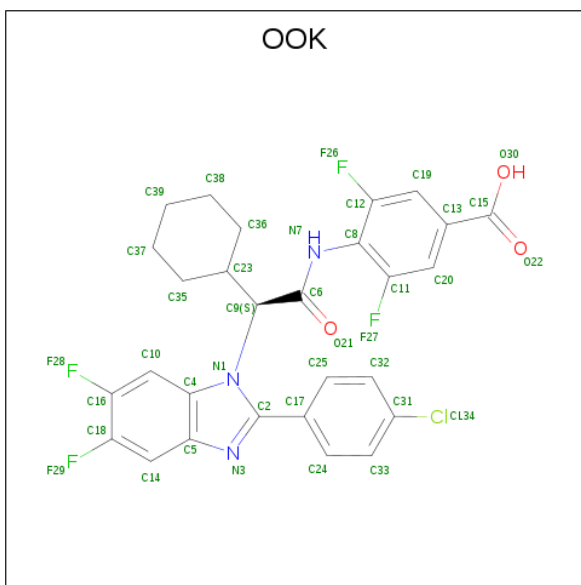
There are 12 discrepancies between the modelled and reference sequences:

Chain	Residue	Modelled	Actual	Comment	Reference
A	244	GLY	-	EXPRESSION TAG	UNP Q96RI1
A	245	SER	-	EXPRESSION TAG	UNP Q96RI1
A	246	HIS	-	EXPRESSION TAG	UNP Q96RI1
A	247	MET	-	EXPRESSION TAG	UNP Q96RI1
A	281	ALA	GLU	ENGINEERED MUTATION	UNP Q96RI1
A	354	ALA	GLU	ENGINEERED MUTATION	UNP Q96RI1
C	244	GLY	-	EXPRESSION TAG	UNP Q96RI1
C	245	SER	-	EXPRESSION TAG	UNP Q96RI1
C	246	HIS	-	EXPRESSION TAG	UNP Q96RI1
C	247	MET	-	EXPRESSION TAG	UNP Q96RI1
C	281	ALA	GLU	ENGINEERED MUTATION	UNP Q96RI1
C	354	ALA	GLU	ENGINEERED MUTATION	UNP Q96RI1

- Molecule 2 is a protein called peptide of Nuclear receptor coactivator 1.

Mol	Chain	Residues	Atoms				ZeroOcc	AltConf	Trace
2	B	12	Total	C	N	O	0	0	0
			107	68	19	20			
2	D	11	Total	C	N	O	0	0	0
			99	64	18	17			

- Molecule 3 is 4-((2S)-2-[2-(4-chlorophenyl)-5,6-difluoro-1H-benzimidazol-1-yl]-2-cyclohexylacetyl)amino)-3,5-difluorobenzoic acid (three-letter code: OOK) (formula: C₂₈H₂₂ClF₄N₃O₃).



Mol	Chain	Residues	Atoms						ZeroOcc	AltConf
3	A	1	Total 39	C 28	Cl 1	F 4	N 3	O 3	0	0
3	C	1	Total 39	C 28	Cl 1	F 4	N 3	O 3	0	0

- Molecule 4 is water.

Mol	Chain	Residues	Atoms	ZeroOcc	AltConf
4	A	89	Total O 89 89	0	0
4	B	6	Total O 6 6	0	0
4	C	66	Total O 66 66	0	0
4	D	5	Total O 5 5	0	0

4 Data and refinement statistics

Property	Value	Source
Space group	C 2 2 21	Depositor
Cell constants a, b, c, α , β , γ	72.48 Å 83.29 Å 190.01 Å 90.00° 90.00° 90.00°	Depositor
Resolution (Å)	38.14 – 2.29 38.14 – 2.29	Depositor EDS
% Data completeness (in resolution range)	99.8 (38.14-2.29) 94.8 (38.14-2.29)	Depositor EDS
R_{merge}	0.07	Depositor
R_{sym}	0.07	Depositor
$\langle I/\sigma(I) \rangle$ ¹	2.01 (at 2.29 Å)	Xtriage
Refinement program	BUSTER 2.9.5	Depositor
R, R_{free}	0.229 , 0.271 0.214 , 0.264	Depositor DCC
R_{free} test set	1337 reflections (5.09%)	wwPDB-VP
Wilson B-factor (Å ²)	37.8	Xtriage
Anisotropy	0.315	Xtriage
Bulk solvent k_{sol} (e/Å ³), B_{sol} (Å ²)	0.28 , 36.4	EDS
L-test for twinning ²	$\langle L \rangle = 0.48$, $\langle L^2 \rangle = 0.31$	Xtriage
Estimated twinning fraction	No twinning to report.	Xtriage
F_o, F_c correlation	0.94	EDS
Total number of atoms	4212	wwPDB-VP
Average B, all atoms (Å ²)	47.0	wwPDB-VP

Xtriage's analysis on translational NCS is as follows: *The largest off-origin peak in the Patterson function is 4.73% of the height of the origin peak. No significant pseudotranslation is detected.*

¹Intensities estimated from amplitudes.

²Theoretical values of $\langle |L| \rangle$, $\langle L^2 \rangle$ for acentric reflections are 0.5, 0.333 respectively for untwinned datasets, and 0.375, 0.2 for perfectly twinned datasets.

5 Model quality [i](#)

5.1 Standard geometry [i](#)

Bond lengths and bond angles in the following residue types are not validated in this section: OOK

The Z score for a bond length (or angle) is the number of standard deviations the observed value is removed from the expected value. A bond length (or angle) with $|Z| > 5$ is considered an outlier worth inspection. RMSZ is the root-mean-square of all Z scores of the bond lengths (or angles).

Mol	Chain	Bond lengths		Bond angles	
		RMSZ	$\# Z > 5$	RMSZ	$\# Z > 5$
1	A	0.51	0/1921	0.66	1/2595 (0.0%)
1	C	0.48	0/1921	0.64	0/2595
2	B	0.50	0/108	0.64	0/144
2	D	0.42	0/100	0.58	0/133
All	All	0.49	0/4050	0.64	1/5467 (0.0%)

There are no bond length outliers.

All (1) bond angle outliers are listed below:

Mol	Chain	Res	Type	Atoms	Z	Observed(°)	Ideal(°)
1	A	473	TRP	C-N-CA	-5.04	109.11	121.70

There are no chirality outliers.

There are no planarity outliers.

5.2 Too-close contacts [i](#)

In the following table, the Non-H and H(model) columns list the number of non-hydrogen atoms and hydrogen atoms in the chain respectively. The H(added) column lists the number of hydrogen atoms added and optimized by MolProbity. The Clashes column lists the number of clashes within the asymmetric unit, whereas Symm-Clashes lists symmetry related clashes.

Mol	Chain	Non-H	H(model)	H(added)	Clashes	Symm-Clashes
1	A	1881	0	1883	30	0
1	C	1881	0	1883	17	0
2	B	107	0	105	1	0
2	D	99	0	101	1	0
3	A	39	0	21	2	0
3	C	39	0	21	1	0

Continued on next page...

Continued from previous page...

Mol	Chain	Non-H	H(model)	H(added)	Clashes	Symm-Clashes
4	A	89	0	0	2	0
4	B	6	0	0	0	0
4	C	66	0	0	1	0
4	D	5	0	0	1	0
All	All	4212	0	4014	48	0

The all-atom clashscore is defined as the number of clashes found per 1000 atoms (including hydrogen atoms). The all-atom clashscore for this structure is 6.

All (48) close contacts within the same asymmetric unit are listed below, sorted by their clash magnitude.

Atom-1	Atom-2	Interatomic distance (Å)	Clash overlap (Å)
1:C:273:ILE:HG12	1:C:294:MET:HE1	1.52	0.90
1:A:267:GLN:HG2	1:A:335:ARG:CZ	2.17	0.74
1:C:293:GLU:HG2	4:C:159:HOH:O	1.87	0.74
1:A:440:ARG:NH1	1:A:443:GLU:OE1	2.21	0.71
1:C:405:ARG:NH1	1:C:409:GLU:OE1	2.29	0.65
1:A:451:HIS:HA	1:A:454:MET:HE3	1.80	0.64
1:A:472:ILE:HG22	1:A:473:TRP:CD1	2.33	0.63
1:C:273:ILE:HG12	1:C:294:MET:CE	2.28	0.61
1:A:389:LEU:HG	1:A:441:LEU:HD21	1.84	0.58
1:A:267:GLN:HG2	1:A:335:ARG:NH2	2.19	0.57
1:A:472:ILE:HD11	2:B:749:LEU:HD13	1.86	0.57
1:A:469:LEU:HD22	1:A:473:TRP:CD1	2.43	0.54
1:A:270:PRO:HA	1:A:273:ILE:HD12	1.90	0.52
1:A:330:GLU:HB3	1:A:444:LEU:HD13	1.92	0.52
1:C:270:PRO:HA	1:C:273:ILE:HD12	1.91	0.51
1:C:338:GLU:OE2	1:C:383:GLN:NE2	2.43	0.51
1:A:273:ILE:HG12	1:A:294:MET:CE	2.42	0.50
1:A:379:LEU:HD13	1:A:437:LEU:HD23	1.93	0.50
1:A:363:ASP:HA	1:A:366:ILE:HD12	1.94	0.50
1:C:339:ILE:CD1	3:C:2:OOK:H19	2.42	0.49
1:A:451:HIS:HA	1:A:454:MET:CE	2.42	0.49
1:A:302:LEU:HD11	1:A:394:ILE:HD11	1.94	0.49
1:A:313:GLN:HG2	4:A:45:HOH:O	2.14	0.48
1:C:357:ARG:HA	1:C:366:ILE:HD12	1.94	0.48
1:C:259:PHE:HE2	1:C:308:LYS:O	1.96	0.48
2:D:747:GLN:NE2	4:D:83:HOH:O	2.27	0.48
1:A:273:ILE:HG12	1:A:294:MET:HE1	1.98	0.46
1:A:285:GLU:HG3	1:A:460:VAL:HG13	1.96	0.46
1:C:379:LEU:HD13	1:C:437:LEU:HD23	1.96	0.46

Continued on next page...

Continued from previous page...

Atom-1	Atom-2	Interatomic distance (Å)	Clash overlap (Å)
1:A:259:PHE:HE2	1:A:308:LYS:O	1.98	0.46
1:C:472:ILE:HG22	1:C:473:TRP:CD1	2.52	0.45
1:C:365:TYR:CG	1:C:454:MET:HG3	2.52	0.44
1:C:464:LYS:HD2	1:C:476:GLN:HE22	1.83	0.44
1:A:270:PRO:HB3	1:A:339:ILE:HG12	1.98	0.44
1:A:264:TYR:O	1:A:267:GLN:HB2	2.17	0.43
1:A:339:ILE:CD1	3:A:1:OOK:H19	2.49	0.42
1:A:334:LEU:HB2	1:A:444:LEU:HD11	2.00	0.42
1:C:385:GLU:HG2	1:C:419:LEU:HD11	2.02	0.42
1:A:330:GLU:OE2	1:A:448:ASN:ND2	2.45	0.42
1:A:458:TRP:HD1	1:A:460:VAL:HG23	1.85	0.42
1:A:268:ARG:O	1:A:335:ARG:NH2	2.53	0.41
1:A:265:ASN:C	1:A:267:GLN:H	2.23	0.41
1:A:298:HIS:HB2	3:A:1:OOK:H20	2.02	0.41
1:A:313:GLN:OE1	4:A:156:HOH:O	2.22	0.41
1:C:277:ILE:HG21	1:C:352:LEU:HD12	2.02	0.41
1:A:256:LEU:HD23	1:A:418:VAL:HG21	2.02	0.41
1:C:365:TYR:O	1:C:369:MET:HB2	2.21	0.40
1:C:421:LYS:O	1:C:425:ILE:HD12	2.21	0.40

There are no symmetry-related clashes.

5.3 Torsion angles [i](#)

5.3.1 Protein backbone [i](#)

In the following table, the Percentiles column shows the percent Ramachandran outliers of the chain as a percentile score with respect to all X-ray entries followed by that with respect to entries of similar resolution.

The Analysed column shows the number of residues for which the backbone conformation was analysed, and the total number of residues.

Mol	Chain	Analysed	Favoured	Allowed	Outliers	Percentiles	
1	A	228/233 (98%)	218 (96%)	10 (4%)	0	100	100
1	C	228/233 (98%)	221 (97%)	7 (3%)	0	100	100
2	B	10/14 (71%)	10 (100%)	0	0	100	100
2	D	9/14 (64%)	9 (100%)	0	0	100	100
All	All	475/494 (96%)	458 (96%)	17 (4%)	0	100	100

There are no Ramachandran outliers to report.

5.3.2 Protein sidechains ⓘ

In the following table, the Percentiles column shows the percent sidechain outliers of the chain as a percentile score with respect to all X-ray entries followed by that with respect to entries of similar resolution.

The Analysed column shows the number of residues for which the sidechain conformation was analysed, and the total number of residues.

Mol	Chain	Analysed	Rotameric	Outliers	Percentiles	
1	A	211/213 (99%)	206 (98%)	5 (2%)	49	66
1	C	211/213 (99%)	203 (96%)	8 (4%)	33	47
2	B	12/14 (86%)	12 (100%)	0	100	100
2	D	11/14 (79%)	10 (91%)	1 (9%)	9	11
All	All	445/454 (98%)	431 (97%)	14 (3%)	40	55

All (14) residues with a non-rotameric sidechain are listed below:

Mol	Chain	Res	Type
1	A	254	GLN
1	A	260	ILE
1	A	267	GLN
1	A	316	ASP
1	A	444	LEU
1	C	289	LEU
1	C	313	GLN
1	C	378	GLU
1	C	383	GLN
1	C	432	GLN
1	C	436	CYS
1	C	443	GLU
1	C	472	ILE
2	D	750	ARG

Some sidechains can be flipped to improve hydrogen bonding and reduce clashes. All (7) such sidechains are listed below:

Mol	Chain	Res	Type
1	A	300	GLN
1	A	348	HIS
1	A	426	HIS

Continued on next page...

Continued from previous page...

Mol	Chain	Res	Type
2	B	747	GLN
1	C	383	GLN
1	C	400	GLN
1	C	427	GLN

5.3.3 RNA [i](#)

There are no RNA molecules in this entry.

5.4 Non-standard residues in protein, DNA, RNA chains [i](#)

There are no non-standard protein/DNA/RNA residues in this entry.

5.5 Carbohydrates [i](#)

There are no carbohydrates in this entry.

5.6 Ligand geometry [i](#)

2 ligands are modelled in this entry.

In the following table, the Counts columns list the number of bonds (or angles) for which Mogul statistics could be retrieved, the number of bonds (or angles) that are observed in the model and the number of bonds (or angles) that are defined in the Chemical Component Dictionary. The Link column lists molecule types, if any, to which the group is linked. The Z score for a bond length (or angle) is the number of standard deviations the observed value is removed from the expected value. A bond length (or angle) with $|Z| > 2$ is considered an outlier worth inspection. RMSZ is the root-mean-square of all Z scores of the bond lengths (or angles).

Mol	Type	Chain	Res	Link	Bond lengths			Bond angles		
					Counts	RMSZ	$\# Z > 2$	Counts	RMSZ	$\# Z > 2$
3	OOK	A	1	-	39,43,43	0.96	1 (2%)	51,63,63	1.66	8 (15%)
3	OOK	C	2	-	39,43,43	0.82	0	51,63,63	1.49	11 (21%)

In the following table, the Chirals column lists the number of chiral outliers, the number of chiral centers analysed, the number of these observed in the model and the number defined in the Chemical Component Dictionary. Similar counts are reported in the Torsion and Rings columns. '-' means no outliers of that kind were identified.

Mol	Type	Chain	Res	Link	Chirals	Torsions	Rings
3	OOK	A	1	-	-	8/16/32/32	0/5/5/5
3	OOK	C	2	-	-	10/16/32/32	0/5/5/5

All (1) bond length outliers are listed below:

Mol	Chain	Res	Type	Atoms	Z	Observed(Å)	Ideal(Å)
3	A	1	OOK	C8-C12	2.21	1.41	1.38

All (19) bond angle outliers are listed below:

Mol	Chain	Res	Type	Atoms	Z	Observed(°)	Ideal(°)
3	A	1	OOK	C12-C8-C11	5.32	120.58	115.65
3	A	1	OOK	F26-C12-C8	4.28	121.39	117.70
3	C	2	OOK	F26-C12-C8	4.12	121.25	117.70
3	C	2	OOK	C12-C8-C11	4.09	119.44	115.65
3	A	1	OOK	C20-C11-C8	-3.58	119.11	123.36
3	A	1	OOK	F27-C11-C8	3.36	120.60	117.70
3	C	2	OOK	C9-C6-N7	3.07	118.00	114.07
3	A	1	OOK	C19-C12-C8	-2.82	120.01	123.36
3	A	1	OOK	C12-C8-N7	-2.82	118.59	122.12
3	A	1	OOK	C9-C6-N7	2.75	117.59	114.07
3	A	1	OOK	C2-N3-C5	2.72	109.16	103.78
3	C	2	OOK	C17-C2-N3	2.66	126.97	122.71
3	C	2	OOK	C19-C12-C8	-2.64	120.22	123.36
3	C	2	OOK	F27-C11-C8	2.59	119.93	117.70
3	C	2	OOK	C20-C11-C8	-2.53	120.35	123.36
3	C	2	OOK	C2-N3-C5	2.39	108.52	103.78
3	C	2	OOK	C14-C5-C4	-2.22	118.82	121.10
3	C	2	OOK	N3-C2-N1	-2.02	110.00	115.06
3	C	2	OOK	C12-C8-N7	-2.01	119.61	122.12

There are no chirality outliers.

All (18) torsion outliers are listed below:

Mol	Chain	Res	Type	Atoms
3	A	1	OOK	C25-C17-C2-N1
3	C	2	OOK	C25-C17-C2-N1
3	C	2	OOK	C35-C23-C9-C6
3	C	2	OOK	C36-C23-C9-C6
3	A	1	OOK	C25-C17-C2-N3
3	C	2	OOK	C25-C17-C2-N3
3	A	1	OOK	C24-C17-C2-N1

Continued on next page...

Continued from previous page...

Mol	Chain	Res	Type	Atoms
3	C	2	OOK	C24-C17-C2-N1
3	C	2	OOK	C35-C23-C9-N1
3	C	2	OOK	C36-C23-C9-N1
3	A	1	OOK	C12-C8-N7-C6
3	C	2	OOK	C12-C8-N7-C6
3	A	1	OOK	O21-C6-C9-N1
3	A	1	OOK	N7-C6-C9-N1
3	C	2	OOK	C24-C17-C2-N3
3	C	2	OOK	C11-C8-N7-C6
3	A	1	OOK	C24-C17-C2-N3
3	A	1	OOK	C11-C8-N7-C6

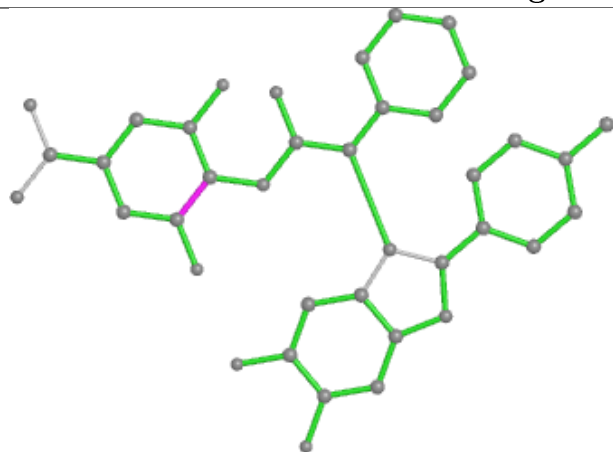
There are no ring outliers.

2 monomers are involved in 3 short contacts:

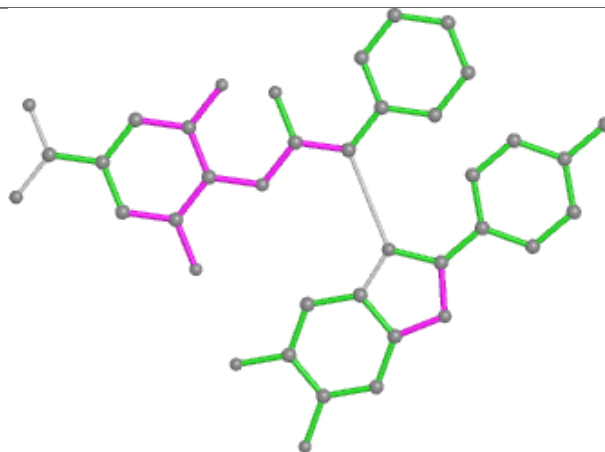
Mol	Chain	Res	Type	Clashes	Symm-Clashes
3	A	1	OOK	2	0
3	C	2	OOK	1	0

The following is a two-dimensional graphical depiction of Mogul quality analysis of bond lengths, bond angles, torsion angles, and ring geometry for all instances of the Ligand of Interest. In addition, ligands with molecular weight > 250 and outliers as shown on the validation Tables will also be included. For torsion angles, if less than 5% of the Mogul distribution of torsion angles is within 10 degrees of the torsion angle in question, then that torsion angle is considered an outlier. Any bond that is central to one or more torsion angles identified as an outlier by Mogul will be highlighted in the graph. For rings, the root-mean-square deviation (RMSD) between the ring in question and similar rings identified by Mogul is calculated over all ring torsion angles. If the average RMSD is greater than 60 degrees and the minimal RMSD between the ring in question and any Mogul-identified rings is also greater than 60 degrees, then that ring is considered an outlier. The outliers are highlighted in purple. The color gray indicates Mogul did not find sufficient equivalents in the CSD to analyse the geometry.

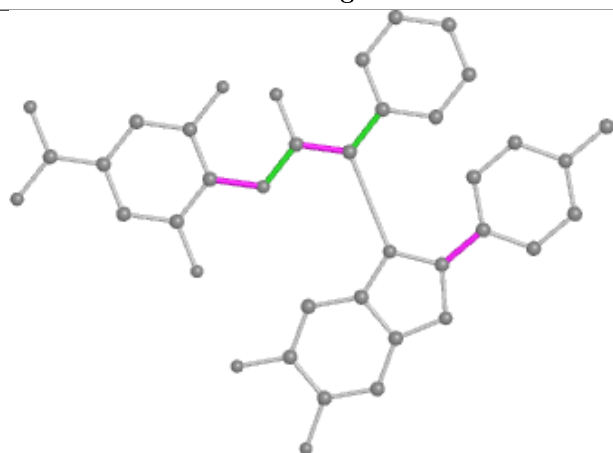
Ligand OOK A 1



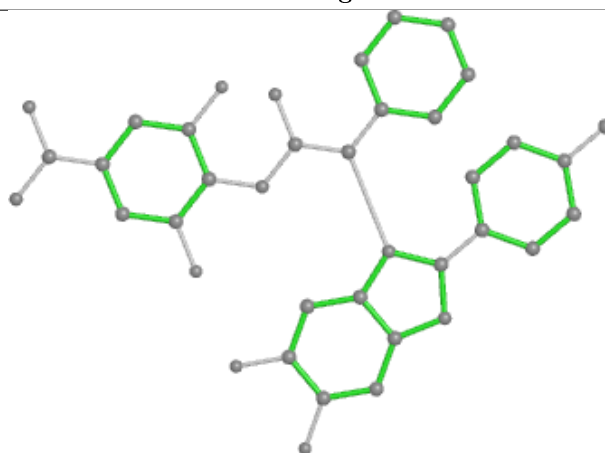
Bond lengths



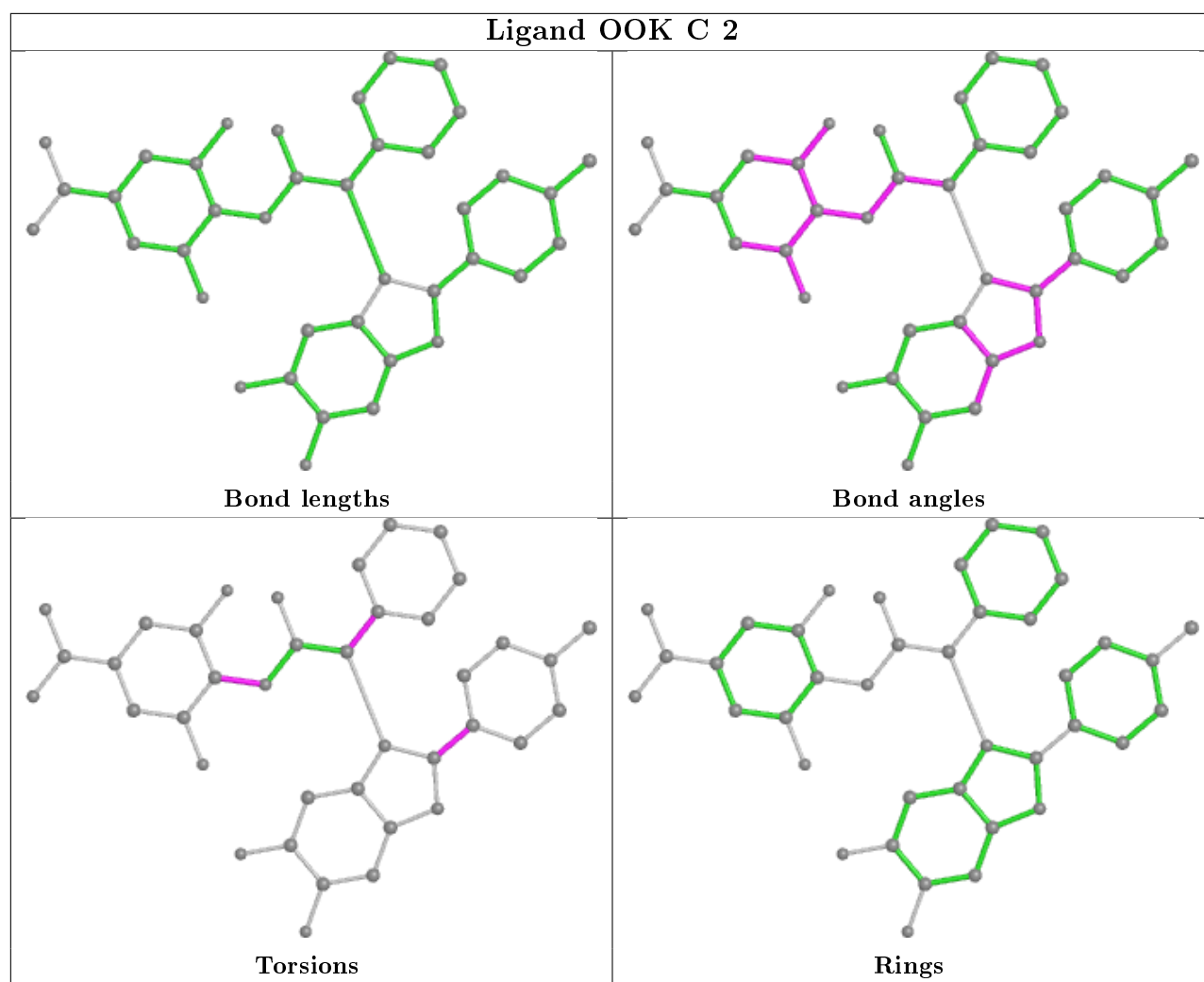
Bond angles



Torsions



Rings



5.7 Other polymers [i](#)

There are no such residues in this entry.

5.8 Polymer linkage issues [i](#)

There are no chain breaks in this entry.

6 Fit of model and data [i](#)

6.1 Protein, DNA and RNA chains [i](#)

In the following table, the column labelled ‘#RSRZ> 2’ contains the number (and percentage) of RSRZ outliers, followed by percent RSRZ outliers for the chain as percentile scores relative to all X-ray entries and entries of similar resolution. The OWAB column contains the minimum, median, 95th percentile and maximum values of the occupancy-weighted average B-factor per residue. The column labelled ‘Q< 0.9’ lists the number of (and percentage) of residues with an average occupancy less than 0.9.

Mol	Chain	Analysed	<RSRZ>	#RSRZ>2	OWAB(Å ²)	Q<0.9
1	A	230/233 (98%)	-0.09	2 (0%) 84 88	23, 43, 71, 90	0
1	C	230/233 (98%)	0.04	3 (1%) 77 81	27, 46, 70, 93	0
2	B	12/14 (85%)	-0.24	0 100 100	37, 50, 71, 100	0
2	D	11/14 (78%)	-0.05	0 100 100	39, 45, 74, 86	0
All	All	483/494 (97%)	-0.03	5 (1%) 82 86	23, 45, 71, 100	0

All (5) RSRZ outliers are listed below:

Mol	Chain	Res	Type	RSRZ
1	A	269	MET	3.6
1	C	247	MET	2.8
1	C	401	TYR	2.8
1	C	425	ILE	2.1
1	A	279	LYS	2.0

6.2 Non-standard residues in protein, DNA, RNA chains [i](#)

There are no non-standard protein/DNA/RNA residues in this entry.

6.3 Carbohydrates [i](#)

There are no carbohydrates in this entry.

6.4 Ligands [i](#)

In the following table, the Atoms column lists the number of modelled atoms in the group and the number defined in the chemical component dictionary. The B-factors column lists the minimum,

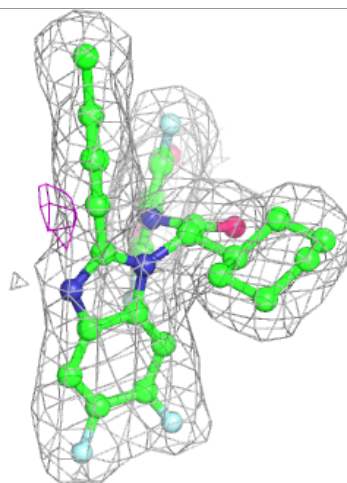
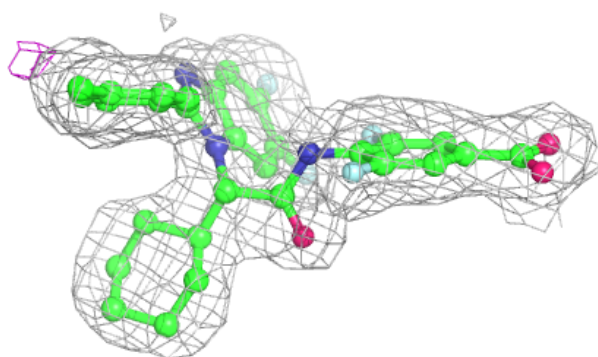
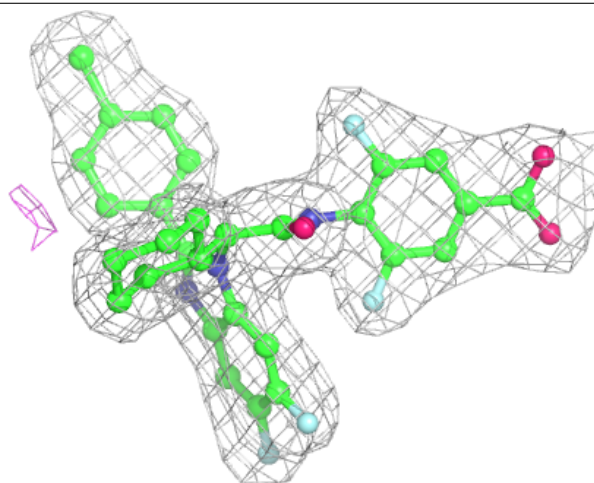
median, 95th percentile and maximum values of B factors of atoms in the group. The column labelled 'Q< 0.9' lists the number of atoms with occupancy less than 0.9.

Mol	Type	Chain	Res	Atoms	RSCC	RSR	B-factors(Å ²)	Q<0.9
3	OOK	A	1	39/39	0.96	0.09	24,31,37,39	0
3	OOK	C	2	39/39	0.96	0.11	26,37,41,43	0

The following is a graphical depiction of the model fit to experimental electron density of all instances of the Ligand of Interest. In addition, ligands with molecular weight > 250 and outliers as shown on the geometry validation Tables will also be included. Each fit is shown from different orientation to approximate a three-dimensional view.

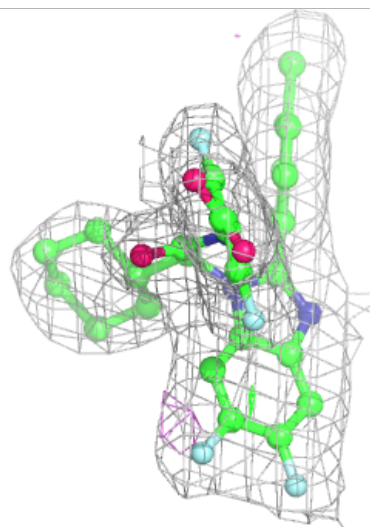
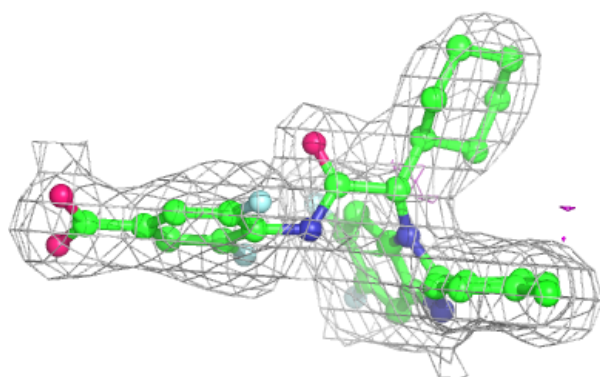
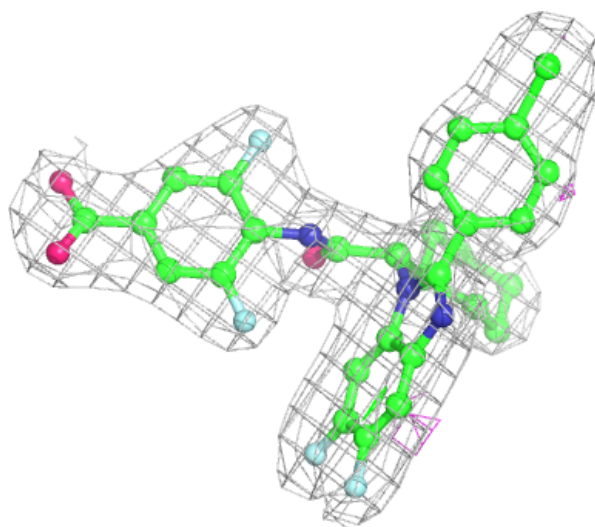
Electron density around OOK A 1:

2mF_o-DF_c (at 0.7 rmsd) in gray
mF_o-DF_c (at 3 rmsd) in purple (negative)
and green (positive)



Electron density around OOK C 2:

$2mF_o-DF_c$ (at 0.7 rmsd) in gray
 mF_o-DF_c (at 3 rmsd) in purple (negative)
and green (positive)



6.5 Other polymers [i](#)

There are no such residues in this entry.