



Full wwPDB X-ray Structure Validation Report ⓘ

Jun 15, 2020 – 05:28 am BST

PDB ID : 4OO9
Title : Structure of the human class C GPCR metabotropic glutamate receptor 5 transmembrane domain in complex with the negative allosteric modulator mavoglurant
Authors : Dore, A.S.; Okrasa, K.; Patel, J.C.; Serrano-Vega, M.; Bennett, K.; Cooke, R.M.; Errey, J.C.; Jazayeri, A.; Khan, S.; Tehan, B.; Weir, M.; Wiggin, G.R.; Marshall, F.H.
Deposited on : 2014-01-31
Resolution : 2.60 Å(reported)

This is a Full wwPDB X-ray Structure Validation Report for a publicly released PDB entry.

We welcome your comments at validation@mail.wwpdb.org

A user guide is available at

<https://www.wwpdb.org/validation/2017/XrayValidationReportHelp>

with specific help available everywhere you see the ⓘ symbol.

The following versions of software and data (see [references ⓘ](#)) were used in the production of this report:

MolProbity : 4.02b-467
Mogul : 1.8.5 (274361), CSD as541be (2020)
Xtriage (Phenix) : 1.13
EDS : 2.11
buster-report : 1.1.7 (2018)
Percentile statistics : 20191225.v01 (using entries in the PDB archive December 25th 2019)
Refmac : 5.8.0158
CCP4 : 7.0.044 (Gargrove)
Ideal geometry (proteins) : Engh & Huber (2001)
Ideal geometry (DNA, RNA) : Parkinson et al. (1996)
Validation Pipeline (wwPDB-VP) : 2.11

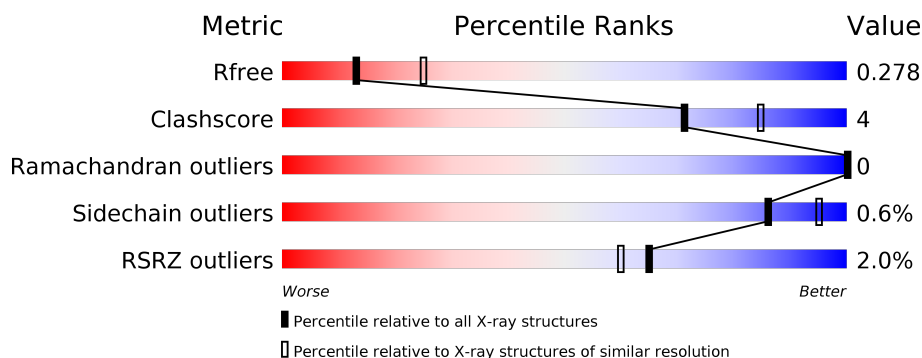
1 Overall quality at a glance

The following experimental techniques were used to determine the structure:

X-RAY DIFFRACTION

The reported resolution of this entry is 2.60 Å.

Percentile scores (ranging between 0-100) for global validation metrics of the entry are shown in the following graphic. The table shows the number of entries on which the scores are based.



Metric	Whole archive (#Entries)	Similar resolution (#Entries, resolution range(Å))
R_{free}	130704	3163 (2.60-2.60)
Clashscore	141614	3518 (2.60-2.60)
Ramachandran outliers	138981	3455 (2.60-2.60)
Sidechain outliers	138945	3455 (2.60-2.60)
RSRZ outliers	127900	3104 (2.60-2.60)

The table below summarises the geometric issues observed across the polymeric chains and their fit to the electron density. The red, orange, yellow and green segments on the lower bar indicate the fraction of residues that contain outliers for ≥ 3 , 2, 1 and 0 types of geometric quality criteria respectively. A grey segment represents the fraction of residues that are not modelled. The numeric value for each fraction is indicated below the corresponding segment, with a dot representing fractions $\leq 5\%$. The upper red bar (where present) indicates the fraction of residues that have poor fit to the electron density. The numeric value is given above the bar.

Mol	Chain	Length	Quality of chain
1	A	444	<div> <div>2%</div> <div>83%</div> <div>9%</div> <div>8%</div> </div>

2 Entry composition

There are 5 unique types of molecules in this entry. The entry contains 3355 atoms, of which 0 are hydrogens and 0 are deuteriums.

In the tables below, the ZeroOcc column contains the number of atoms modelled with zero occupancy, the AltConf column contains the number of residues with at least one atom in alternate conformation and the Trace column contains the number of residues modelled with at most 2 atoms.

- Molecule 1 is a protein called Metabotropic glutamate receptor 5, Lysozyme, Metabotropic glutamate receptor 5 chimera.

Mol	Chain	Residues	Atoms					ZeroOcc	AltConf	Trace
1	A	409	Total	C	N	O	S	0	0	0
			3212	2096	534	558	24			

There are 24 discrepancies between the modelled and reference sequences:

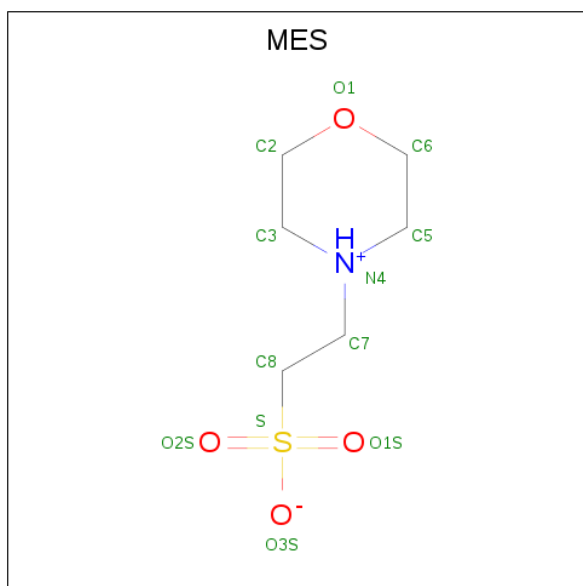
Chain	Residue	Modelled	Actual	Comment	Reference
A	566	ALA	-	EXPRESSION TAG	UNP P41594
A	567	ALA	-	EXPRESSION TAG	UNP P41594
A	568	SER	-	EXPRESSION TAG	UNP P41594
A	579	ALA	GLU	ENGINEERED MUTATION	UNP P41594
A	667	TYR	ASN	ENGINEERED MUTATION	UNP P41594
A	669	ALA	ILE	ENGINEERED MUTATION	UNP P41594
A	675	MET	GLY	ENGINEERED MUTATION	UNP P41594
A	1054	THR	CYS	ENGINEERED MUTATION	UNP P00720
A	1097	ALA	CYS	ENGINEERED MUTATION	UNP P00720
A	742	ALA	THR	ENGINEERED MUTATION	UNP P41594
A	753	ALA	SER	ENGINEERED MUTATION	UNP P41594
A	837	ALA	-	EXPRESSION TAG	UNP P41594
A	838	ALA	-	EXPRESSION TAG	UNP P41594
A	839	ALA	-	EXPRESSION TAG	UNP P41594
A	840	HIS	-	EXPRESSION TAG	UNP P41594
A	841	HIS	-	EXPRESSION TAG	UNP P41594
A	842	HIS	-	EXPRESSION TAG	UNP P41594
A	843	HIS	-	EXPRESSION TAG	UNP P41594
A	844	HIS	-	EXPRESSION TAG	UNP P41594
A	845	HIS	-	EXPRESSION TAG	UNP P41594
A	846	HIS	-	EXPRESSION TAG	UNP P41594
A	847	HIS	-	EXPRESSION TAG	UNP P41594
A	848	HIS	-	EXPRESSION TAG	UNP P41594
A	849	HIS	-	EXPRESSION TAG	UNP P41594

- Molecule 2 is OLEIC ACID (three-letter code: OLA) (formula: C₁₈H₃₄O₂).



Mol	Chain	Residues	Atoms				ZeroOcc	AltConf
3	A	1	Total	C	N	O	0	0
			23	19	1	3		

- Molecule 4 is 2-(N-MORPHOLINO)-ETHANESULFONIC ACID (three-letter code: MES) (formula: C₆H₁₃NO₄S).



Mol	Chain	Residues	Atoms					ZeroOcc	AltConf
4	A	1	Total	C	N	O	S	0	0
			12	6	1	4	1		

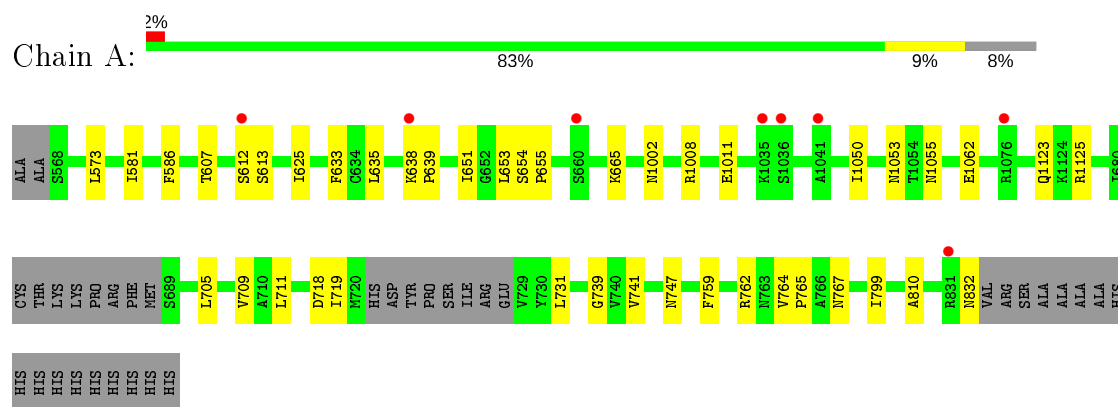
- Molecule 5 is water.

Mol	Chain	Residues	Atoms		ZeroOcc	AltConf
5	A	46	Total	O	0	0
			46	46		

3 Residue-property plots [i](#)

These plots are drawn for all protein, RNA and DNA chains in the entry. The first graphic for a chain summarises the proportions of the various outlier classes displayed in the second graphic. The second graphic shows the sequence view annotated by issues in geometry and electron density. Residues are color-coded according to the number of geometric quality criteria for which they contain at least one outlier: green = 0, yellow = 1, orange = 2 and red = 3 or more. A red dot above a residue indicates a poor fit to the electron density ($RSRZ > 2$). Stretches of 2 or more consecutive residues without any outlier are shown as a green connector. Residues present in the sample, but not in the model, are shown in grey.

- Molecule 1: Metabotropic glutamate receptor 5, Lysozyme, Metabotropic glutamate receptor 5 chimera



4 Data and refinement statistics

Property	Value	Source
Space group	C 1 2 1	Depositor
Cell constants a, b, c, α , β , γ	143.24Å 43.55Å 82.05Å 90.00° 99.37° 90.00°	Depositor
Resolution (Å)	29.74 – 2.60 34.51 – 2.60	Depositor EDS
% Data completeness (in resolution range)	94.1 (29.74-2.60) 94.1 (34.51-2.60)	Depositor EDS
R_{merge}	0.12	Depositor
R_{sym}	(Not available)	Depositor
$\langle I/\sigma(I) \rangle$ ¹	2.05 (at 2.61Å)	Xtriage
Refinement program	PHENIX (phenix.refine: 1.8.1_1168)	Depositor
R, R_{free}	0.239 , 0.275 0.244 , 0.278	Depositor DCC
R_{free} test set	691 reflections (4.67%)	wwPDB-VP
Wilson B-factor (Å ²)	41.4	Xtriage
Anisotropy	0.910	Xtriage
Bulk solvent k_{sol} (e/Å ³), B_{sol} (Å ²)	0.34 , 47.2	EDS
L-test for twinning ²	$\langle L \rangle = 0.49$, $\langle L^2 \rangle = 0.33$	Xtriage
Estimated twinning fraction	No twinning to report.	Xtriage
F_o, F_c correlation	0.92	EDS
Total number of atoms	3355	wwPDB-VP
Average B, all atoms (Å ²)	40.0	wwPDB-VP

Xtriage's analysis on translational NCS is as follows: *The largest off-origin peak in the Patterson function is 6.88% of the height of the origin peak. No significant pseudotranslation is detected.*

¹Intensities estimated from amplitudes.

²Theoretical values of $\langle |L| \rangle$, $\langle L^2 \rangle$ for acentric reflections are 0.5, 0.333 respectively for untwinned datasets, and 0.375, 0.2 for perfectly twinned datasets.

5 Model quality

5.1 Standard geometry

Bond lengths and bond angles in the following residue types are not validated in this section: OLA, 2U8, MES, YCM

The Z score for a bond length (or angle) is the number of standard deviations the observed value is removed from the expected value. A bond length (or angle) with $|Z| > 5$ is considered an outlier worth inspection. RMSZ is the root-mean-square of all Z scores of the bond lengths (or angles).

Mol	Chain	Bond lengths		Bond angles	
		RMSZ	$\# Z > 5$	RMSZ	$\# Z > 5$
1	A	0.22	0/3255	0.38	0/4413

There are no bond length outliers.

There are no bond angle outliers.

There are no chirality outliers.

There are no planarity outliers.

5.2 Too-close contacts

In the following table, the Non-H and H(model) columns list the number of non-hydrogen atoms and hydrogen atoms in the chain respectively. The H(added) column lists the number of hydrogen atoms added and optimized by MolProbity. The Clashes column lists the number of clashes within the asymmetric unit, whereas Symm-Clashes lists symmetry related clashes.

Mol	Chain	Non-H	H(model)	H(added)	Clashes	Symm-Clashes
1	A	3212	0	3342	24	0
2	A	62	0	87	3	0
3	A	23	0	23	1	0
4	A	12	0	13	0	0
5	A	46	0	0	3	0
All	All	3355	0	3465	24	0

The all-atom clashscore is defined as the number of clashes found per 1000 atoms (including hydrogen atoms). The all-atom clashscore for this structure is 4.

All (24) close contacts within the same asymmetric unit are listed below, sorted by their clash magnitude.

Atom-1	Atom-2	Interatomic distance (Å)	Clash overlap (Å)
1:A:607:THR:HB	1:A:832:ASN:HD21	1.51	0.74
1:A:625:ILE:HG23	1:A:810:ALA:HB1	1.77	0.66
1:A:1011:GLU:O	5:A:4142:HOH:O	2.16	0.62
1:A:1053:ASN:OD1	1:A:1055:ASN:ND2	2.32	0.61
1:A:1002:ASN:ND2	5:A:4112:HOH:O	2.35	0.59
1:A:709:VAL:HG11	2:A:4003:OLA:H81	1.86	0.57
1:A:1123:GLN:OE1	1:A:1125:ARG:NH2	2.35	0.57
1:A:653:LEU:HD11	1:A:705:LEU:HD13	1.88	0.55
1:A:633:PHE:HE1	2:A:4004:OLA:H62	1.72	0.54
1:A:613:SER:OG	1:A:665:LYS:NZ	2.42	0.51
1:A:741:VAL:HG13	2:A:4001:OLA:H72	1.93	0.50
1:A:639:PRO:HA	1:A:731:LEU:HD13	1.92	0.50
1:A:635:LEU:HD21	1:A:651:ILE:HD11	1.99	0.45
1:A:638:LYS:NZ	5:A:4109:HOH:O	2.51	0.43
1:A:759:PHE:O	1:A:762:ARG:NH2	2.44	0.42
1:A:747:ASN:ND2	3:A:4005:2U8:O2	2.45	0.42
1:A:1050:ILE:HD12	1:A:1062:GLU:HB3	2.01	0.41
1:A:612:SER:OG	1:A:767:ASN:ND2	2.53	0.41
1:A:654:SER:OG	1:A:655:PRO:HD3	2.20	0.41
1:A:711:LEU:HD13	1:A:739:GLY:HA2	2.02	0.41
1:A:573:LEU:HD13	1:A:581:ILE:HG21	2.03	0.41
1:A:764:VAL:HA	1:A:765:PRO:HD3	1.87	0.41
1:A:718:ASP:OD1	1:A:719:ILE:N	2.54	0.40
1:A:635:LEU:HB3	1:A:799:ILE:HG23	2.02	0.40

There are no symmetry-related clashes.

5.3 Torsion angles [i](#)

5.3.1 Protein backbone [i](#)

In the following table, the Percentiles column shows the percent Ramachandran outliers of the chain as a percentile score with respect to all X-ray entries followed by that with respect to entries of similar resolution.

The Analysed column shows the number of residues for which the backbone conformation was analysed, and the total number of residues.

Mol	Chain	Analysed	Favoured	Allowed	Outliers	Percentiles	
1	A	401/444 (90%)	390 (97%)	11 (3%)	0	100	100

There are no Ramachandran outliers to report.

5.3.2 Protein sidechains [i](#)

In the following table, the Percentiles column shows the percent sidechain outliers of the chain as a percentile score with respect to all X-ray entries followed by that with respect to entries of similar resolution.

The Analysed column shows the number of residues for which the sidechain conformation was analysed, and the total number of residues.

Mol	Chain	Analysed	Rotameric	Outliers	Percentiles	
1	A	342/371 (92%)	340 (99%)	2 (1%)	86	95

All (2) residues with a non-rotameric sidechain are listed below:

Mol	Chain	Res	Type
1	A	586	PHE
1	A	1008	ARG

Some sidechains can be flipped to improve hydrogen bonding and reduce clashes. All (1) such sidechains are listed below:

Mol	Chain	Res	Type
1	A	832	ASN

5.3.3 RNA [i](#)

There are no RNA molecules in this entry.

5.4 Non-standard residues in protein, DNA, RNA chains [i](#)

2 non-standard protein/DNA/RNA residues are modelled in this entry.

In the following table, the Counts columns list the number of bonds (or angles) for which Mogul statistics could be retrieved, the number of bonds (or angles) that are observed in the model and the number of bonds (or angles) that are defined in the Chemical Component Dictionary. The Link column lists molecule types, if any, to which the group is linked. The Z score for a bond length (or angle) is the number of standard deviations the observed value is removed from the expected value. A bond length (or angle) with $|Z| > 2$ is considered an outlier worth inspection. RMSZ is the root-mean-square of all Z scores of the bond lengths (or angles).

Mol	Type	Chain	Res	Link	Bond lengths			Bond angles		
					Counts	RMSZ	$\# Z > 2$	Counts	RMSZ	$\# Z > 2$
1	YCM	A	691	1	7,9,10	1.08	0	4,10,12	0.58	0
1	YCM	A	634	1	7,9,10	1.11	0	4,10,12	0.62	0

In the following table, the Chirals column lists the number of chiral outliers, the number of chiral centers analysed, the number of these observed in the model and the number defined in the Chemical Component Dictionary. Similar counts are reported in the Torsion and Rings columns. '-' means no outliers of that kind were identified.

Mol	Type	Chain	Res	Link	Chirals	Torsions	Rings
1	YCM	A	691	1	-	3/6/8/10	-
1	YCM	A	634	1	-	5/6/8/10	-

There are no bond length outliers.

There are no bond angle outliers.

There are no chirality outliers.

All (8) torsion outliers are listed below:

Mol	Chain	Res	Type	Atoms
1	A	691	YCM	C-CA-CB-SG
1	A	691	YCM	CE-CD-SG-CB
1	A	634	YCM	N-CA-CB-SG
1	A	634	YCM	C-CA-CB-SG
1	A	634	YCM	SG-CD-CE-NZ2
1	A	634	YCM	SG-CD-CE-OZ1
1	A	634	YCM	CE-CD-SG-CB
1	A	691	YCM	N-CA-CB-SG

There are no ring outliers.

No monomer is involved in short contacts.

5.5 Carbohydrates [i](#)

There are no carbohydrates in this entry.

5.6 Ligand geometry [i](#)

6 ligands are modelled in this entry.

In the following table, the Counts columns list the number of bonds (or angles) for which Mogul statistics could be retrieved, the number of bonds (or angles) that are observed in the model and the number of bonds (or angles) that are defined in the Chemical Component Dictionary. The Link column lists molecule types, if any, to which the group is linked. The Z score for a bond length (or angle) is the number of standard deviations the observed value is removed from the expected value. A bond length (or angle) with $|Z| > 2$ is considered an outlier worth inspection. RMSZ is the root-mean-square of all Z scores of the bond lengths (or angles).

Mol	Type	Chain	Res	Link	Bond lengths			Bond angles		
					Counts	RMSZ	# Z > 2	Counts	RMSZ	# Z > 2
2	OLA	A	4003	-	10,13,19	0.21	0	8,13,19	0.57	0
2	OLA	A	4004	-	9,12,19	0.17	0	8,12,19	0.71	0
4	MES	A	4006	-	12,12,12	2.63	1 (8%)	14,16,16	1.84	3 (21%)
3	2U8	A	4005	-	24,25,25	1.42	4 (16%)	27,36,36	1.88	7 (25%)
2	OLA	A	4001	-	16,19,19	0.12	0	15,19,19	0.64	0
2	OLA	A	4002	-	11,14,19	0.12	0	10,14,19	0.57	0

In the following table, the Chirals column lists the number of chiral outliers, the number of chiral centers analysed, the number of these observed in the model and the number defined in the Chemical Component Dictionary. Similar counts are reported in the Torsion and Rings columns. '-' means no outliers of that kind were identified.

Mol	Type	Chain	Res	Link	Chirals	Torsions	Rings
2	OLA	A	4003	-	-	3/9/11/17	-
2	OLA	A	4004	-	-	2/8/10/17	-
4	MES	A	4006	-	-	2/6/14/14	0/1/1/1
3	2U8	A	4005	-	-	3/10/38/38	0/3/3/3
2	OLA	A	4001	-	-	8/15/17/17	-
2	OLA	A	4002	-	-	7/10/12/17	-

All (5) bond length outliers are listed below:

Mol	Chain	Res	Type	Atoms	Z	Observed(Å)	Ideal(Å)
4	A	4006	MES	C8-S	-8.99	1.64	1.77
3	A	4005	2U8	C18-N1	3.70	1.40	1.35
3	A	4005	2U8	C4-C9	2.75	1.23	1.19
3	A	4005	2U8	C11-C10	2.20	1.55	1.53
3	A	4005	2U8	O1-C10	-2.18	1.40	1.43

All (10) bond angle outliers are listed below:

Mol	Chain	Res	Type	Atoms	Z	Observed(°)	Ideal(°)
3	A	4005	2U8	C15-C10-C9	-5.00	105.91	110.90
4	A	4006	MES	O2S-S-C8	4.84	112.74	106.92
3	A	4005	2U8	C16-C17-N1	3.78	107.23	103.33
3	A	4005	2U8	C19-O3-C18	3.60	119.50	115.34
3	A	4005	2U8	C12-C13-C14	3.37	118.72	109.91
3	A	4005	2U8	C13-C14-C15	3.04	117.25	113.11
3	A	4005	2U8	C12-C11-C10	2.49	114.25	111.81
4	A	4006	MES	O1-C6-C5	-2.13	107.11	111.80

Continued on next page...

Continued from previous page...

Mol	Chain	Res	Type	Atoms	Z	Observed(°)	Ideal(°)
3	A	4005	2U8	C11-C12-C13	2.07	114.75	111.38
4	A	4006	MES	O2S-S-O1S	-2.01	106.98	113.95

There are no chirality outliers.

All (25) torsion outliers are listed below:

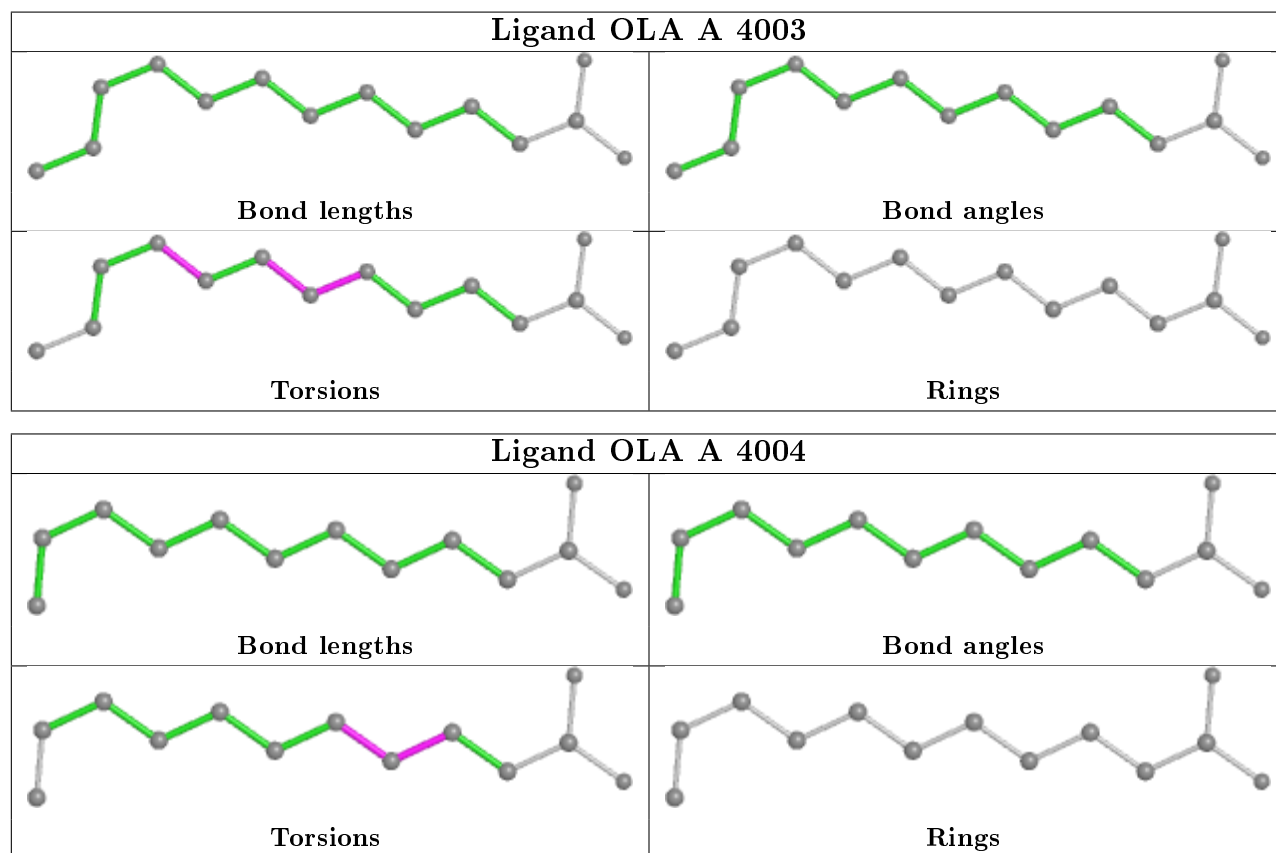
Mol	Chain	Res	Type	Atoms
4	A	4006	MES	N4-C7-C8-S
3	A	4005	2U8	C11-C10-C9-C4
2	A	4002	OLA	C1-C2-C3-C4
2	A	4003	OLA	C5-C6-C7-C8
2	A	4001	OLA	C2-C3-C4-C5
2	A	4004	OLA	C2-C3-C4-C5
2	A	4002	OLA	C4-C5-C6-C7
2	A	4001	OLA	C14-C15-C16-C17
2	A	4002	OLA	C3-C4-C5-C6
3	A	4005	2U8	C1-C4-C9-C10
2	A	4001	OLA	C4-C5-C6-C7
2	A	4003	OLA	C4-C5-C6-C7
2	A	4001	OLA	C15-C16-C17-C18
2	A	4001	OLA	C5-C6-C7-C8
2	A	4001	OLA	C11-C12-C13-C14
2	A	4004	OLA	C3-C4-C5-C6
2	A	4002	OLA	C6-C7-C8-C9
2	A	4002	OLA	C11-C10-C9-C8
3	A	4005	2U8	O3-C18-N1-C14
2	A	4002	OLA	C9-C10-C11-C12
2	A	4001	OLA	C13-C14-C15-C16
2	A	4002	OLA	C7-C8-C9-C10
2	A	4001	OLA	C7-C8-C9-C10
2	A	4003	OLA	C7-C8-C9-C10
4	A	4006	MES	C7-C8-S-O1S

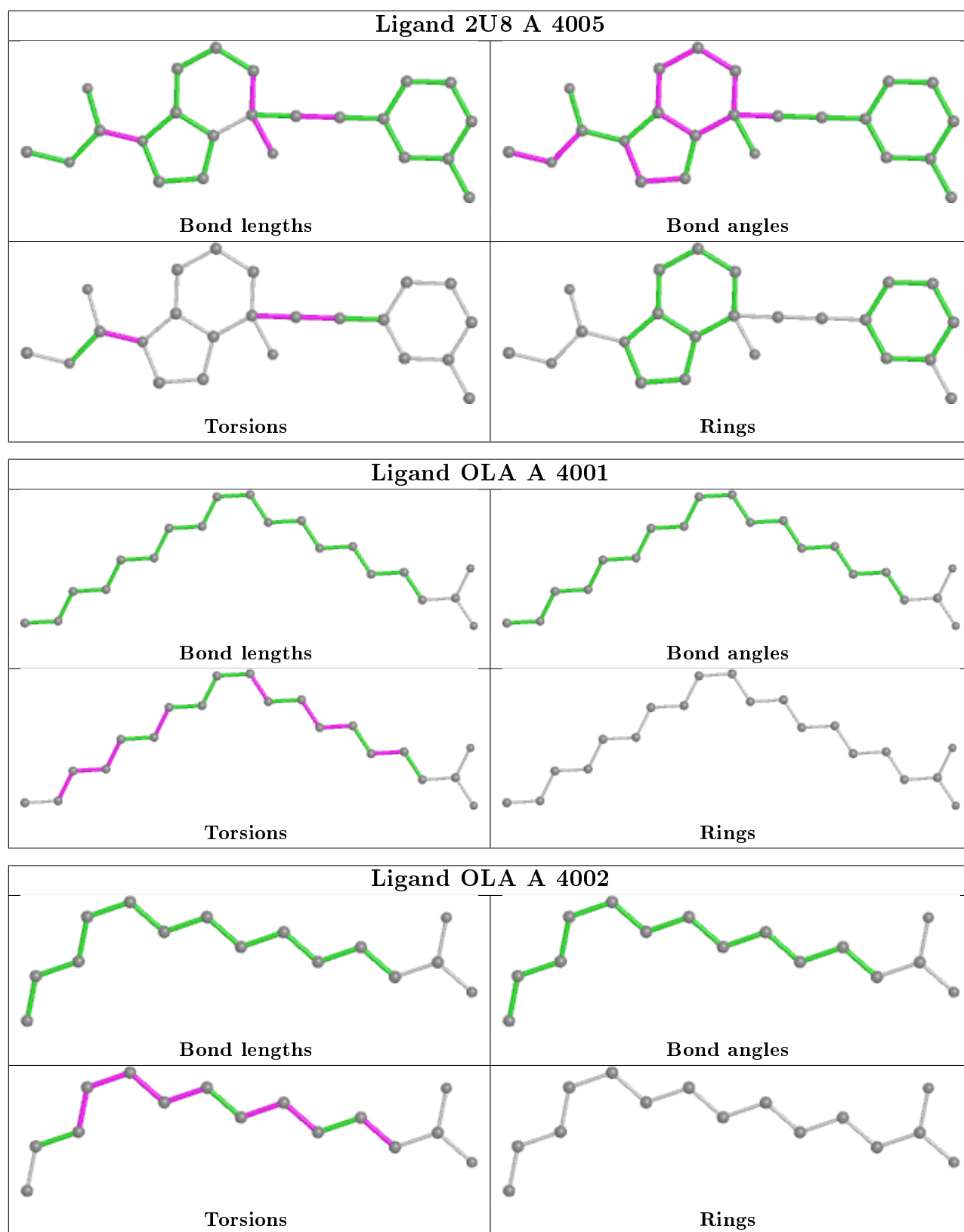
There are no ring outliers.

4 monomers are involved in 4 short contacts:

Mol	Chain	Res	Type	Clashes	Symm-Clashes
2	A	4003	OLA	1	0
2	A	4004	OLA	1	0
3	A	4005	2U8	1	0
2	A	4001	OLA	1	0

The following is a two-dimensional graphical depiction of Mogul quality analysis of bond lengths, bond angles, torsion angles, and ring geometry for all instances of the Ligand of Interest. In addition, ligands with molecular weight > 250 and outliers as shown on the validation Tables will also be included. For torsion angles, if less than 5% of the Mogul distribution of torsion angles is within 10 degrees of the torsion angle in question, then that torsion angle is considered an outlier. Any bond that is central to one or more torsion angles identified as an outlier by Mogul will be highlighted in the graph. For rings, the root-mean-square deviation (RMSD) between the ring in question and similar rings identified by Mogul is calculated over all ring torsion angles. If the average RMSD is greater than 60 degrees and the minimal RMSD between the ring in question and any Mogul-identified rings is also greater than 60 degrees, then that ring is considered an outlier. The outliers are highlighted in purple. The color gray indicates Mogul did not find sufficient equivalents in the CSD to analyse the geometry.





5.7 Other polymers ⓘ

There are no such residues in this entry.

5.8 Polymer linkage issues

There are no chain breaks in this entry.

6 Fit of model and data [i](#)

6.1 Protein, DNA and RNA chains [i](#)

In the following table, the column labelled ‘#RSRZ> 2’ contains the number (and percentage) of RSRZ outliers, followed by percent RSRZ outliers for the chain as percentile scores relative to all X-ray entries and entries of similar resolution. The OWAB column contains the minimum, median, 95th percentile and maximum values of the occupancy-weighted average B-factor per residue. The column labelled ‘Q< 0.9’ lists the number of (and percentage) of residues with an average occupancy less than 0.9.

Mol	Chain	Analysed	<RSRZ>	#RSRZ>2	OWAB(Å ²)	Q<0.9
1	A	407/444 (91%)	0.07	8 (1%) 65 60	19, 38, 66, 76	0

All (8) RSRZ outliers are listed below:

Mol	Chain	Res	Type	RSRZ
1	A	612	SER	4.8
1	A	831	ARG	4.6
1	A	638	LYS	4.0
1	A	1041	ALA	3.0
1	A	1076	ARG	2.6
1	A	1036	SER	2.5
1	A	660	SER	2.2
1	A	1035	LYS	2.0

6.2 Non-standard residues in protein, DNA, RNA chains [i](#)

In the following table, the Atoms column lists the number of modelled atoms in the group and the number defined in the chemical component dictionary. The B-factors column lists the minimum, median, 95th percentile and maximum values of B factors of atoms in the group. The column labelled ‘Q< 0.9’ lists the number of atoms with occupancy less than 0.9.

Mol	Type	Chain	Res	Atoms	RSCC	RSR	B-factors(Å ²)	Q<0.9
1	YCM	A	634	10/11	0.85	0.20	33,36,61,73	0
1	YCM	A	691	10/11	0.86	0.27	49,53,80,114	0

6.3 Carbohydrates [i](#)

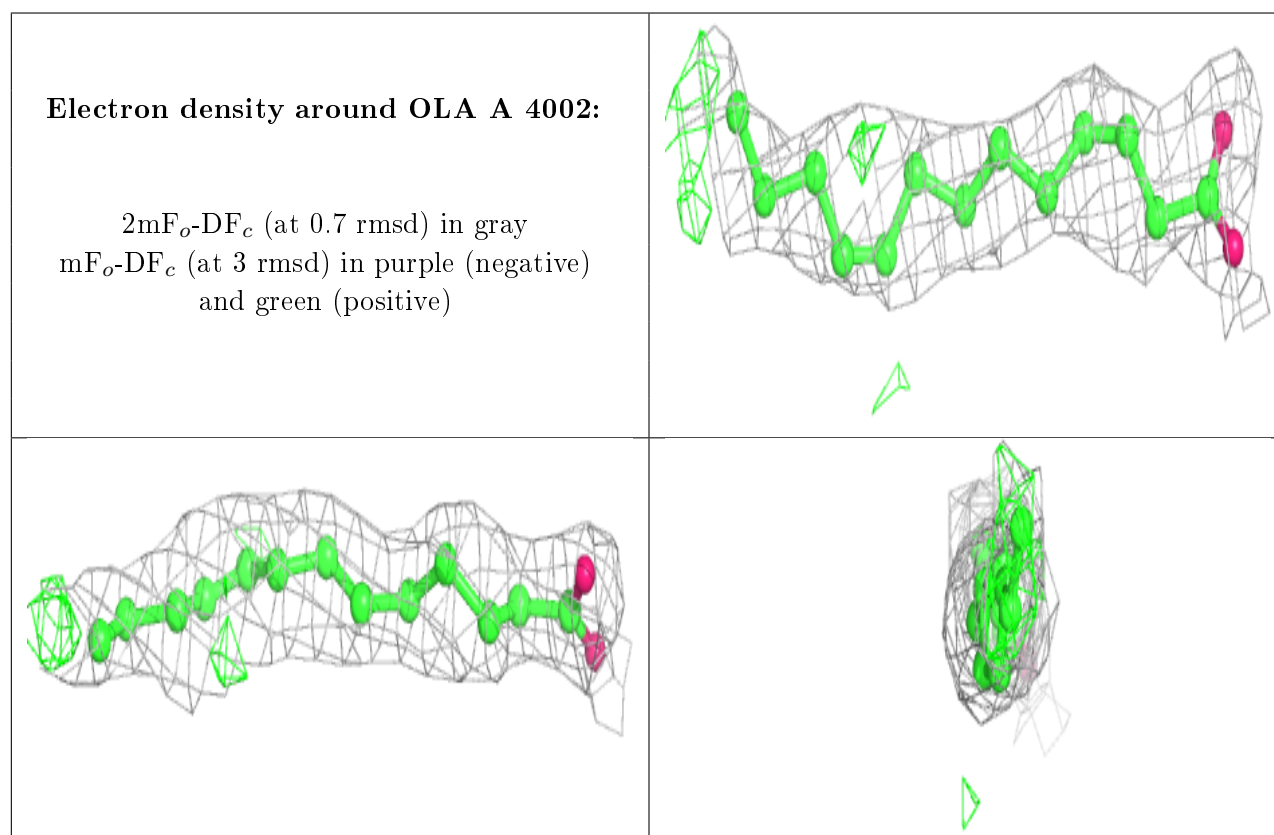
There are no carbohydrates in this entry.

6.4 Ligands ⓘ

In the following table, the Atoms column lists the number of modelled atoms in the group and the number defined in the chemical component dictionary. The B-factors column lists the minimum, median, 95th percentile and maximum values of B factors of atoms in the group. The column labelled 'Q<0.9' lists the number of atoms with occupancy less than 0.9.

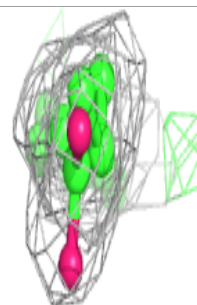
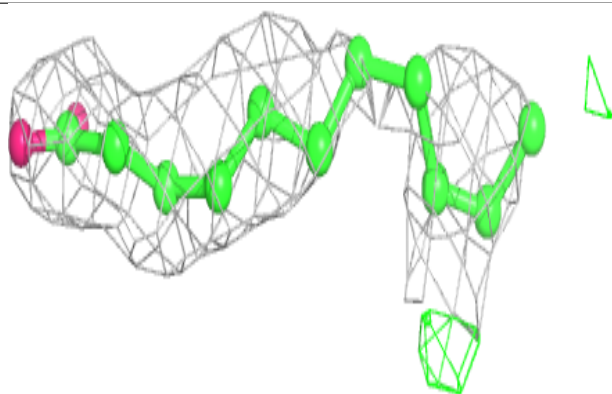
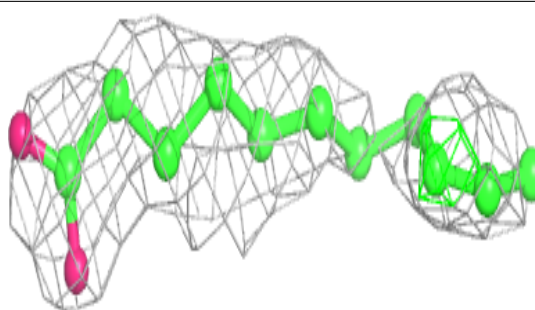
Mol	Type	Chain	Res	Atoms	RSCC	RSR	B-factors(Å ²)	Q<0.9
2	OLA	A	4002	15/20	0.76	0.21	55,57,68,68	0
2	OLA	A	4004	13/20	0.79	0.30	68,69,70,70	0
2	OLA	A	4003	14/20	0.82	0.23	61,64,68,68	0
2	OLA	A	4001	20/20	0.88	0.24	39,49,62,62	0
3	2U8	A	4005	23/23	0.95	0.21	23,31,40,42	0
4	MES	A	4006	12/12	0.98	0.17	38,50,51,51	0

The following is a graphical depiction of the model fit to experimental electron density of all instances of the Ligand of Interest. In addition, ligands with molecular weight > 250 and outliers as shown on the geometry validation Tables will also be included. Each fit is shown from different orientation to approximate a three-dimensional view.

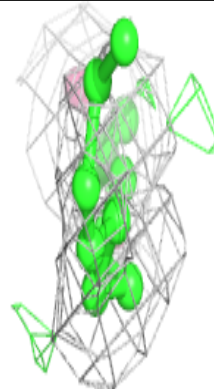
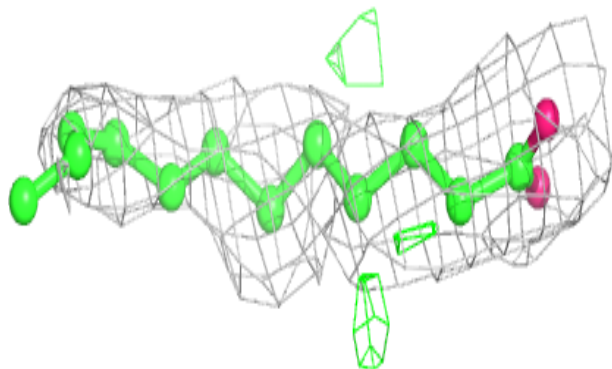
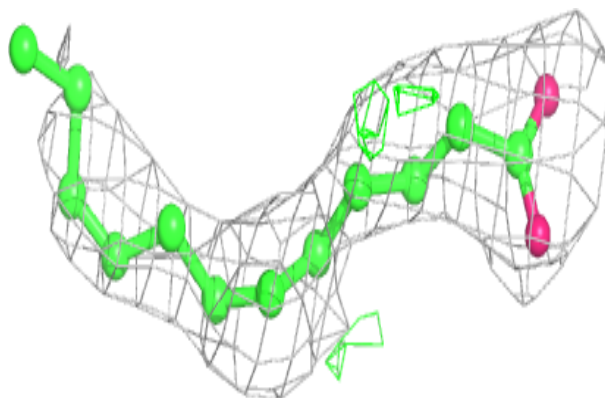


Electron density around OLA A 4004:

$2mF_o-DF_c$ (at 0.7 rmsd) in gray
 mF_o-DF_c (at 3 rmsd) in purple (negative)
and green (positive)

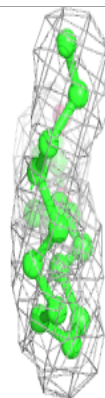
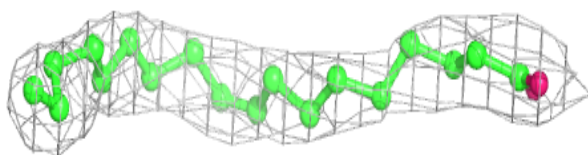
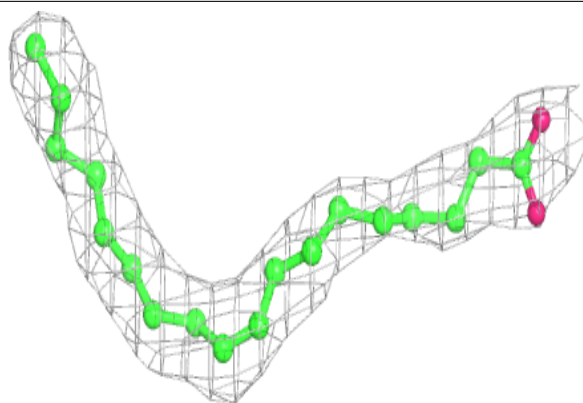
**Electron density around OLA A 4003:**

$2mF_o-DF_c$ (at 0.7 rmsd) in gray
 mF_o-DF_c (at 3 rmsd) in purple (negative)
and green (positive)

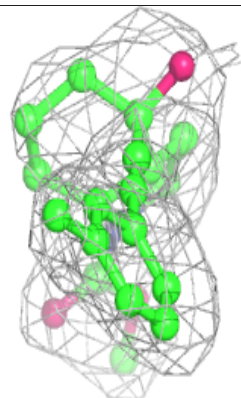
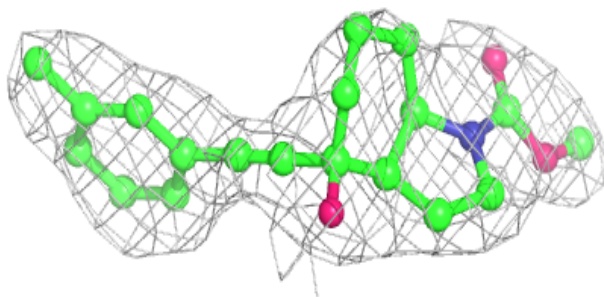
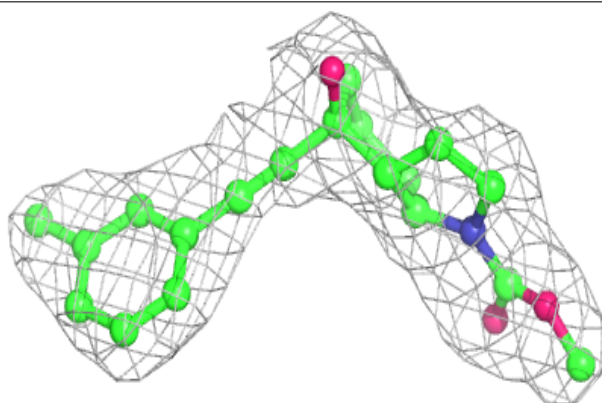


Electron density around OLA A 4001:

$2mF_o-DF_c$ (at 0.7 rmsd) in gray
 mF_o-DF_c (at 3 rmsd) in purple (negative)
and green (positive)

**Electron density around 2U8 A 4005:**

$2mF_o-DF_c$ (at 0.7 rmsd) in gray
 mF_o-DF_c (at 3 rmsd) in purple (negative)
and green (positive)



6.5 Other polymers

There are no such residues in this entry.