



Full wwPDB X-ray Structure Validation Report ⓘ

May 17, 2020 – 04:17 am BST

PDB ID : 4OVG
Title : E. coli sliding clamp in complex with (R)-9-(2-amino-2-oxoethyl)-6-chloro-2,3,4,9-tetrahydro-1H-carbazole-2-carboxylic acid
Authors : Yin, Z.; Oakley, A.J.
Deposited on : 2014-02-21
Resolution : 1.90 Å(reported)

This is a Full wwPDB X-ray Structure Validation Report for a publicly released PDB entry.

We welcome your comments at validation@mail.wwpdb.org

A user guide is available at

<https://www.wwpdb.org/validation/2017/XrayValidationReportHelp>

with specific help available everywhere you see the ⓘ symbol.

The following versions of software and data (see [references ⓘ](#)) were used in the production of this report:

MolProbity : 4.02b-467
Mogul : 1.8.5 (274361), CSD as541be (2020)
Xtriage (Phenix) : 1.13
EDS : 2.11
buster-report : 1.1.7 (2018)
Percentile statistics : 20191225.v01 (using entries in the PDB archive December 25th 2019)
Refmac : 5.8.0158
CCP4 : 7.0.044 (Gargrove)
Ideal geometry (proteins) : Engh & Huber (2001)
Ideal geometry (DNA, RNA) : Parkinson et al. (1996)
Validation Pipeline (wwPDB-VP) : 2.11

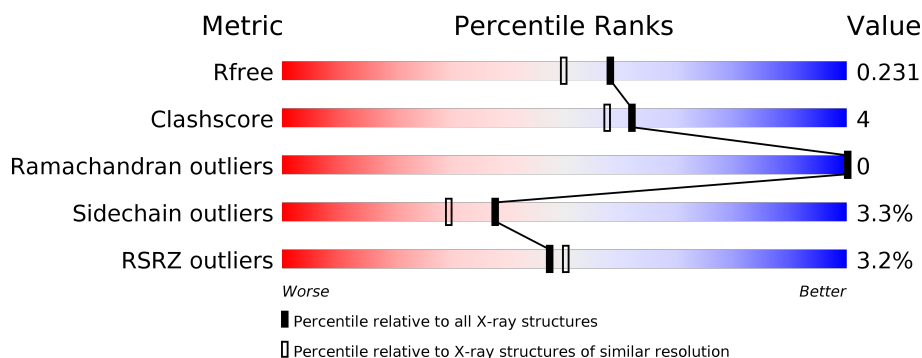
1 Overall quality at a glance

The following experimental techniques were used to determine the structure:

X-RAY DIFFRACTION

The reported resolution of this entry is 1.90 Å.

Percentile scores (ranging between 0-100) for global validation metrics of the entry are shown in the following graphic. The table shows the number of entries on which the scores are based.



Metric	Whole archive (#Entries)	Similar resolution (#Entries, resolution range(Å))
R_{free}	130704	6207 (1.90-1.90)
Clashscore	141614	6847 (1.90-1.90)
Ramachandran outliers	138981	6760 (1.90-1.90)
Sidechain outliers	138945	6760 (1.90-1.90)
RSRZ outliers	127900	6082 (1.90-1.90)

The table below summarises the geometric issues observed across the polymeric chains and their fit to the electron density. The red, orange, yellow and green segments on the lower bar indicate the fraction of residues that contain outliers for ≥ 3 , 2, 1 and 0 types of geometric quality criteria respectively. A grey segment represents the fraction of residues that are not modelled. The numeric value for each fraction is indicated below the corresponding segment, with a dot representing fractions $\leq 5\%$. The upper red bar (where present) indicates the fraction of residues that have poor fit to the electron density. The numeric value is given above the bar.

Mol	Chain	Length	Quality of chain
1	A	366	
1	B	366	

2 Entry composition [i](#)

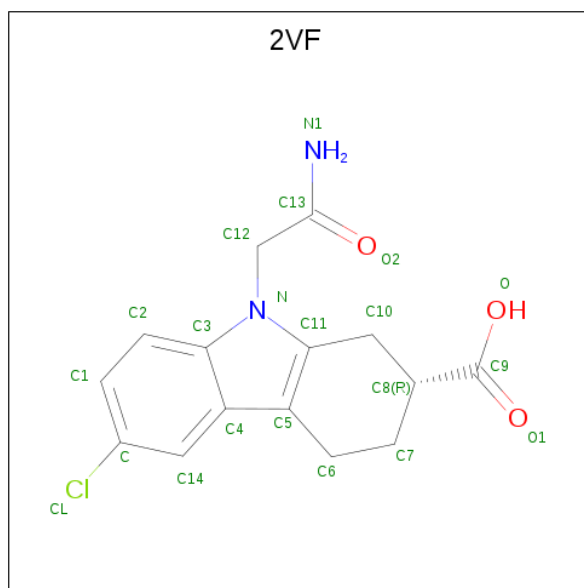
There are 9 unique types of molecules in this entry. The entry contains 6359 atoms, of which 0 are hydrogens and 0 are deuteriums.

In the tables below, the ZeroOcc column contains the number of atoms modelled with zero occupancy, the AltConf column contains the number of residues with at least one atom in alternate conformation and the Trace column contains the number of residues modelled with at most 2 atoms.

- Molecule 1 is a protein called DNA polymerase III subunit beta.

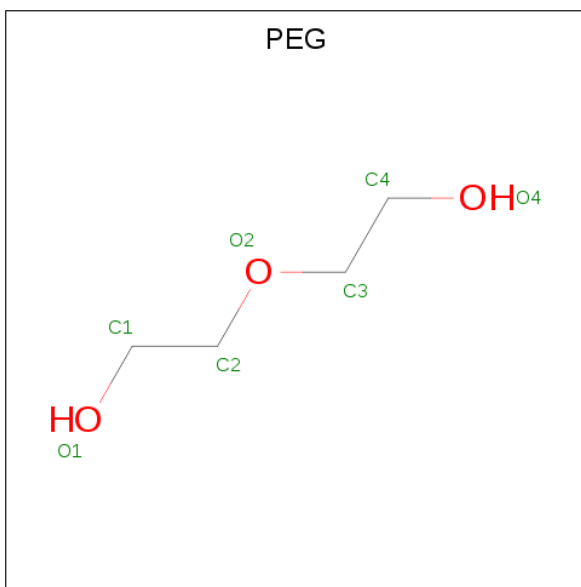
Mol	Chain	Residues	Atoms					ZeroOcc	AltConf	Trace
1	A	361	Total	C	N	O	S	0	5	0
			2822	1773	491	539	19			
1	B	366	Total	C	N	O	S	0	13	0
			2896	1828	497	550	21			

- Molecule 2 is (2R)-9-(2-amino-2-oxoethyl)-6-chloro-2,3,4,9-tetrahydro-1H-carbazole-2-carboxylic acid (three-letter code: 2VF) (formula: C₁₅H₁₅ClN₂O₃).



Mol	Chain	Residues	Atoms					ZeroOcc	AltConf
2	A	1	Total	C	Cl	N	O	0	0
			21	15	1	2	3		
2	B	1	Total	C	Cl	N	O	0	0
			21	15	1	2	3		

- Molecule 3 is DI(HYDROXYETHYL)ETHER (three-letter code: PEG) (formula: C₄H₁₀O₃).

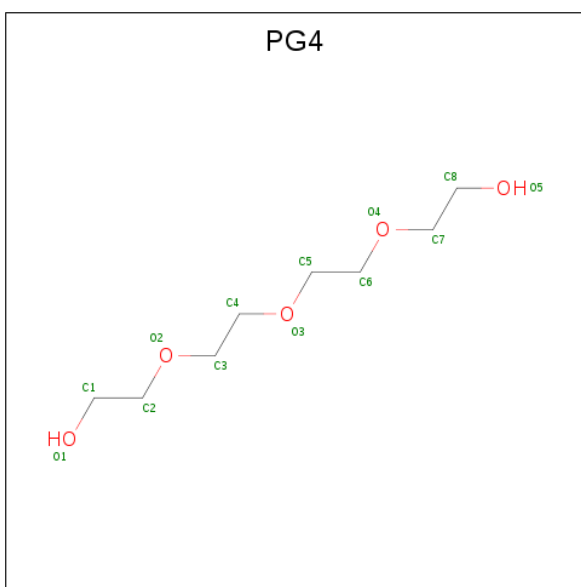


Mol	Chain	Residues	Atoms			ZeroOcc	AltConf
3	A	1	Total	C	O	0	0
			7	4	3		
3	A	1	Total	C	O	0	0
			7	4	3		
3	B	1	Total	C	O	0	0
			7	4	3		
3	B	1	Total	C	O	0	0
			7	4	3		

- Molecule 4 is CALCIUM ION (three-letter code: CA) (formula: Ca).

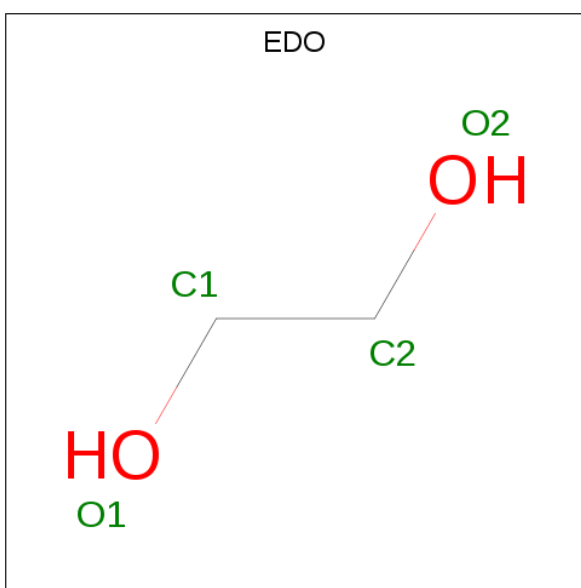
Mol	Chain	Residues	Atoms		ZeroOcc	AltConf
4	A	4	Total	Ca	0	0
			4	4		

- Molecule 5 is TETRAETHYLENE GLYCOL (three-letter code: PG4) (formula: C₈H₁₈O₅).



Mol	Chain	Residues	Atoms			ZeroOcc	AltConf
5	A	1	Total	C	O	0	0
			13	8	5		
5	B	1	Total	C	O	0	0
			13	8	5		

- Molecule 6 is 1,2-ETHANEDIOL (three-letter code: EDO) (formula: $C_2H_6O_2$).

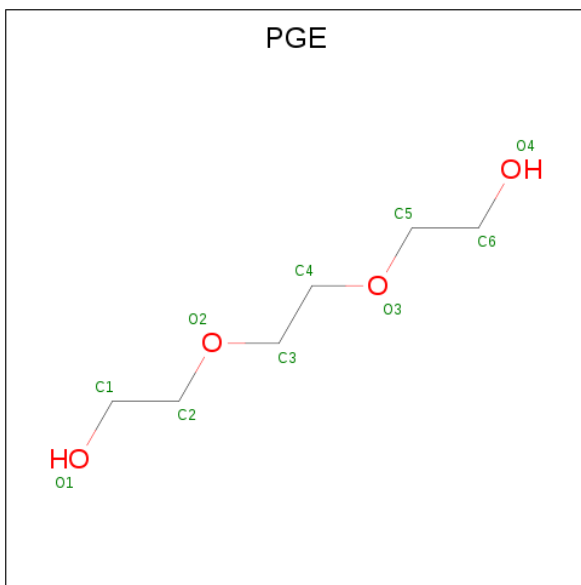


Mol	Chain	Residues	Atoms			ZeroOcc	AltConf
6	A	1	Total	C	O	0	0
			4	2	2		

- Molecule 7 is CHLORIDE ION (three-letter code: CL) (formula: Cl).

Mol	Chain	Residues	Atoms	ZeroOcc	AltConf
7	B	1	Total Cl 1 1	0	0
7	A	1	Total Cl 1 1	0	0

- Molecule 8 is TRIETHYLENE GLYCOL (three-letter code: PGE) (formula: $C_6H_{14}O_4$).



Mol	Chain	Residues	Atoms	ZeroOcc	AltConf
8	B	1	Total C O 10 6 4	0	0

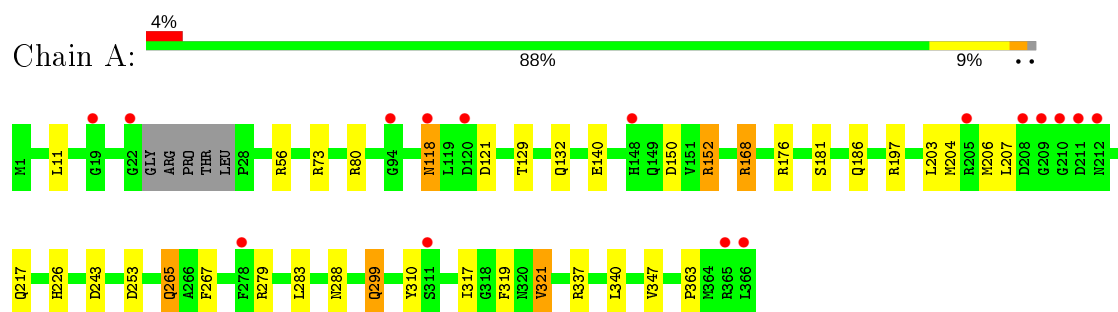
- Molecule 9 is water.

Mol	Chain	Residues	Atoms	ZeroOcc	AltConf
9	A	239	Total O 239 239	0	0
9	B	286	Total O 286 286	0	0

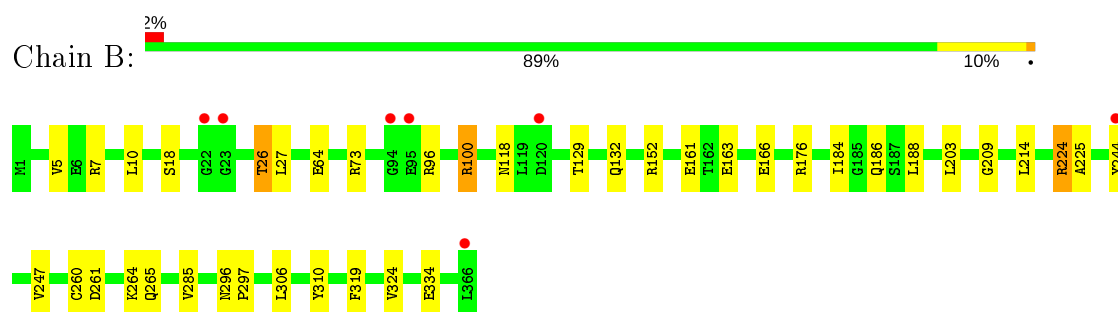
3 Residue-property plots [i](#)

These plots are drawn for all protein, RNA and DNA chains in the entry. The first graphic for a chain summarises the proportions of the various outlier classes displayed in the second graphic. The second graphic shows the sequence view annotated by issues in geometry and electron density. Residues are color-coded according to the number of geometric quality criteria for which they contain at least one outlier: green = 0, yellow = 1, orange = 2 and red = 3 or more. A red dot above a residue indicates a poor fit to the electron density ($\text{RSRZ} > 2$). Stretches of 2 or more consecutive residues without any outlier are shown as a green connector. Residues present in the sample, but not in the model, are shown in grey.

- Molecule 1: DNA polymerase III subunit beta



- Molecule 1: DNA polymerase III subunit beta



4 Data and refinement statistics

Property	Value	Source
Space group	P 1 21 1	Depositor
Cell constants a, b, c, α , β , γ	80.08 Å 66.20 Å 80.62 Å 90.00° 114.90° 90.00°	Depositor
Resolution (Å)	21.62 – 1.90 21.62 – 1.90	Depositor EDS
% Data completeness (in resolution range)	99.8 (21.62-1.90) 99.9 (21.62-1.90)	Depositor EDS
R_{merge}	0.03	Depositor
R_{sym}	(Not available)	Depositor
$\langle I/\sigma(I) \rangle$ ¹	6.09 (at 1.90 Å)	Xtriage
Refinement program	REFMAC 5.7.0029	Depositor
R, R_{free}	0.180 , 0.226 0.189 , 0.231	Depositor DCC
R_{free} test set	3041 reflections (5.05%)	wwPDB-VP
Wilson B-factor (Å ²)	17.3	Xtriage
Anisotropy	0.053	Xtriage
Bulk solvent k_{sol} (e/Å ³), B_{sol} (Å ²)	0.37 , 47.6	EDS
L-test for twinning ²	$\langle L \rangle = 0.49$, $\langle L^2 \rangle = 0.33$	Xtriage
Estimated twinning fraction	0.016 for l,-k,h	Xtriage
F_o, F_c correlation	0.94	EDS
Total number of atoms	6359	wwPDB-VP
Average B, all atoms (Å ²)	19.0	wwPDB-VP

Xtriage's analysis on translational NCS is as follows: *The largest off-origin peak in the Patterson function is 5.37% of the height of the origin peak. No significant pseudotranslation is detected.*

¹Intensities estimated from amplitudes.

²Theoretical values of $\langle |L| \rangle$, $\langle L^2 \rangle$ for acentric reflections are 0.5, 0.333 respectively for untwinned datasets, and 0.375, 0.2 for perfectly twinned datasets.

5 Model quality [i](#)

5.1 Standard geometry [i](#)

Bond lengths and bond angles in the following residue types are not validated in this section: PGE, 2VF, CL, CA, EDO, PG4, PEG

The Z score for a bond length (or angle) is the number of standard deviations the observed value is removed from the expected value. A bond length (or angle) with $|Z| > 5$ is considered an outlier worth inspection. RMSZ is the root-mean-square of all Z scores of the bond lengths (or angles).

Mol	Chain	Bond lengths		Bond angles	
		RMSZ	$\# Z > 5$	RMSZ	$\# Z > 5$
1	A	0.55	0/2869	0.82	5/3884 (0.1%)
1	B	0.59	0/2970	0.78	3/4022 (0.1%)
All	All	0.57	0/5839	0.80	8/7906 (0.1%)

There are no bond length outliers.

All (8) bond angle outliers are listed below:

Mol	Chain	Res	Type	Atoms	Z	Observed(°)	Ideal(°)
1	A	168	ARG	NE-CZ-NH1	13.73	127.17	120.30
1	A	168	ARG	NE-CZ-NH2	-11.95	114.33	120.30
1	A	152	ARG	NE-CZ-NH2	-6.45	117.07	120.30
1	B	7	ARG	NE-CZ-NH1	5.57	123.09	120.30
1	A	197	ARG	NE-CZ-NH1	5.48	123.04	120.30
1	B	224	ARG	NE-CZ-NH2	-5.43	117.58	120.30
1	B	152	ARG	NE-CZ-NH2	-5.33	117.64	120.30
1	A	243	ASP	CB-CG-OD1	5.05	122.85	118.30

There are no chirality outliers.

There are no planarity outliers.

5.2 Too-close contacts [i](#)

In the following table, the Non-H and H(model) columns list the number of non-hydrogen atoms and hydrogen atoms in the chain respectively. The H(added) column lists the number of hydrogen atoms added and optimized by MolProbity. The Clashes column lists the number of clashes within the asymmetric unit, whereas Symm-Clashes lists symmetry related clashes.

Mol	Chain	Non-H	H(model)	H(added)	Clashes	Symm-Clashes
1	A	2822	0	2814	26	0

Continued on next page...

Continued from previous page...

Mol	Chain	Non-H	H(model)	H(added)	Clashes	Symm-Clashes
1	B	2896	0	2908	25	1
2	A	21	0	14	0	0
2	B	21	0	14	0	0
3	A	14	0	20	0	0
3	B	14	0	20	1	0
4	A	4	0	0	0	0
5	A	13	0	18	0	0
5	B	13	0	18	2	0
6	A	4	0	6	0	0
7	A	1	0	0	1	0
7	B	1	0	0	0	0
8	B	10	0	14	1	0
9	A	239	0	0	5	0
9	B	286	0	0	8	1
All	All	6359	0	5846	51	1

The all-atom clashscore is defined as the number of clashes found per 1000 atoms (including hydrogen atoms). The all-atom clashscore for this structure is 4.

All (51) close contacts within the same asymmetric unit are listed below, sorted by their clash magnitude.

Atom-1	Atom-2	Interatomic distance (Å)	Clash overlap (Å)
1:B:260:CYS:HB2	9:B:750:HOH:O	1.15	1.23
1:A:129:THR:H	1:A:186:GLN:HE22	1.34	0.75
1:A:319:PHE:HZ	1:A:347:VAL:HG21	1.51	0.75
1:A:150:ASP:OD1	1:A:152:ARG:HD3	1.87	0.75
1:A:168:ARG:HD3	1:A:181:SER:OG	1.85	0.75
1:A:132:GLN:OE1	9:A:726:HOH:O	2.13	0.66
1:A:253[A]:ASP:OD1	9:A:729:HOH:O	2.15	0.64
1:B:186:GLN:CG	9:B:664:HOH:O	2.46	0.63
1:A:279:ARG:O	1:A:321:VAL:HG23	1.99	0.61
1:B:319[B]:PHE:CE1	1:B:324:VAL:HG21	2.35	0.61
1:A:319:PHE:CZ	1:A:347:VAL:HG21	2.35	0.61
1:A:217:GLN:OE1	1:A:226:HIS:HE1	1.84	0.60
1:A:217:GLN:OE1	1:A:226:HIS:CE1	2.55	0.59
1:A:150:ASP:OD1	1:A:152:ARG:CD	2.51	0.58
1:B:118:ASN:ND2	9:B:682:HOH:O	2.36	0.58
1:A:299:GLN:HE21	1:A:299:GLN:HA	1.69	0.57
1:A:299:GLN:HE21	1:A:299:GLN:CA	2.19	0.56
1:B:26:THR:HG22	1:B:27:LEU:HG	1.88	0.55
1:A:279:ARG:N	9:A:723:HOH:O	2.40	0.54

Continued on next page...

Continued from previous page...

Atom-1	Atom-2	Interatomic distance (Å)	Clash overlap (Å)
1:B:64[A]:GLU:CG	9:B:627:HOH:O	2.56	0.53
1:A:267:PHE:HE1	1:A:283:LEU:HD11	1.73	0.53
1:B:244:TYR:HD2	9:B:617:HOH:O	1.93	0.52
1:A:267:PHE:CE1	1:A:283:LEU:HD11	2.46	0.51
1:A:340:LEU:HD23	1:A:347:VAL:HG22	1.93	0.50
1:B:296:ASN:HB2	1:B:297:PRO:CD	2.42	0.50
1:B:184:ILE:HD11	1:B:188:LEU:HD11	1.95	0.49
1:A:337:ARG:NH1	9:A:557:HOH:O	2.47	0.48
1:B:224:ARG:HH22	5:B:404:PG4:H31	1.78	0.48
1:A:288:ASN:HD22	1:A:310:TYR:H	1.63	0.47
1:B:285[A]:VAL:HG12	1:B:310:TYR:CE2	2.50	0.47
1:B:5[A]:VAL:HG11	1:B:10:LEU:HD13	1.97	0.46
1:B:132:GLN:NE2	1:B:209:GLY:H	2.13	0.46
1:B:285[B]:VAL:HG22	1:B:310:TYR:CD2	2.51	0.46
1:A:140:GLU:HG3	1:A:204:MET:CE	2.46	0.46
1:B:18:SER:HB3	8:B:405:PGE:H3	1.97	0.46
1:B:129:THR:HG21	3:B:403:PEG:H11	1.97	0.46
1:B:285[A]:VAL:HG12	1:B:310:TYR:CD2	2.51	0.46
1:B:214:LEU:HD11	1:B:225:ALA:HB1	1.97	0.45
1:A:118:ASN:ND2	9:A:656:HOH:O	2.50	0.44
1:A:265:GLN:HG2	7:A:410:CL:CL	2.54	0.44
1:B:224:ARG:HH12	5:B:404:PG4:H31	1.83	0.44
1:A:140:GLU:HG2	1:A:204:MET:HE3	2.00	0.43
1:A:140:GLU:CG	1:A:204:MET:HE3	2.49	0.43
1:B:161:GLU:OE2	9:B:754:HOH:O	2.21	0.43
1:B:166[B]:GLU:HG3	9:B:586:HOH:O	2.19	0.42
1:B:100:ARG:HH11	1:B:100:ARG:HG2	1.85	0.42
1:A:203:LEU:O	1:A:206:MET:HG2	2.20	0.42
1:B:163:GLU:O	1:B:166[A]:GLU:HG2	2.21	0.41
1:A:317:ILE:HD11	1:A:363:PRO:HB3	2.03	0.41
1:B:64[A]:GLU:HG3	9:B:627:HOH:O	2.21	0.41
1:B:261:ASP:O	1:B:265:GLN:HG2	2.21	0.40

All (1) symmetry-related close contacts are listed below. The label for Atom-2 includes the symmetry operator and encoded unit-cell translations to be applied.

Atom-1	Atom-2	Interatomic distance (Å)	Clash overlap (Å)
1:B:334:GLU:OE2	9:B:784:HOH:O[2_556]	1.86	0.34

5.3 Torsion angles

5.3.1 Protein backbone

In the following table, the Percentiles column shows the percent Ramachandran outliers of the chain as a percentile score with respect to all X-ray entries followed by that with respect to entries of similar resolution.

The Analysed column shows the number of residues for which the backbone conformation was analysed, and the total number of residues.

Mol	Chain	Analysed	Favoured	Allowed	Outliers	Percentiles	
1	A	362/366 (99%)	356 (98%)	6 (2%)	0	100	100
1	B	377/366 (103%)	370 (98%)	7 (2%)	0	100	100
All	All	739/732 (101%)	726 (98%)	13 (2%)	0	100	100

There are no Ramachandran outliers to report.

5.3.2 Protein sidechains

In the following table, the Percentiles column shows the percent sidechain outliers of the chain as a percentile score with respect to all X-ray entries followed by that with respect to entries of similar resolution.

The Analysed column shows the number of residues for which the sidechain conformation was analysed, and the total number of residues.

Mol	Chain	Analysed	Rotameric	Outliers	Percentiles	
1	A	309/313 (99%)	298 (96%)	11 (4%)	35	26
1	B	318/313 (102%)	309 (97%)	9 (3%)	43	36
All	All	627/626 (100%)	607 (97%)	20 (3%)	38	30

All (20) residues with a non-rotameric sidechain are listed below:

Mol	Chain	Res	Type
1	A	11	LEU
1	A	56	ARG
1	A	73	ARG
1	A	80	ARG
1	A	118	ASN
1	A	121	ASP
1	A	176	ARG
1	A	207	LEU

Continued on next page...

Continued from previous page...

Mol	Chain	Res	Type
1	A	265	GLN
1	A	299	GLN
1	A	321	VAL
1	B	26	THR
1	B	73	ARG
1	B	96	ARG
1	B	100	ARG
1	B	176	ARG
1	B	203	LEU
1	B	247	VAL
1	B	264	LYS
1	B	306	LEU

Some sidechains can be flipped to improve hydrogen bonding and reduce clashes. All (13) such sidechains are listed below:

Mol	Chain	Res	Type
1	A	16	GLN
1	A	36	GLN
1	A	186	GLN
1	A	191	HIS
1	A	226	HIS
1	A	251	ASN
1	A	288	ASN
1	A	289	GLN
1	A	299	GLN
1	B	15	GLN
1	B	132	GLN
1	B	335	ASN
1	B	348	GLN

5.3.3 RNA ⓘ

There are no RNA molecules in this entry.

5.4 Non-standard residues in protein, DNA, RNA chains ⓘ

There are no non-standard protein/DNA/RNA residues in this entry.

5.5 Carbohydrates [i](#)

There are no carbohydrates in this entry.

5.6 Ligand geometry [i](#)

Of 16 ligands modelled in this entry, 6 are monoatomic - leaving 10 for Mogul analysis.

In the following table, the Counts columns list the number of bonds (or angles) for which Mogul statistics could be retrieved, the number of bonds (or angles) that are observed in the model and the number of bonds (or angles) that are defined in the Chemical Component Dictionary. The Link column lists molecule types, if any, to which the group is linked. The Z score for a bond length (or angle) is the number of standard deviations the observed value is removed from the expected value. A bond length (or angle) with $|Z| > 2$ is considered an outlier worth inspection. RMSZ is the root-mean-square of all Z scores of the bond lengths (or angles).

Mol	Type	Chain	Res	Link	Bond lengths			Bond angles		
					Counts	RMSZ	# Z > 2	Counts	RMSZ	# Z > 2
8	PGE	B	405	-	9,9,9	0.48	0	8,8,8	0.38	0
3	PEG	B	403	-	6,6,6	0.44	0	5,5,5	0.32	0
5	PG4	A	405	-	12,12,12	0.53	0	11,11,11	0.54	0
3	PEG	A	402	-	6,6,6	0.49	0	5,5,5	0.50	0
3	PEG	B	402	-	6,6,6	0.43	0	5,5,5	0.29	0
2	2VF	B	401	-	16,23,23	1.92	2 (12%)	20,34,34	2.15	6 (30%)
2	2VF	A	401	-	16,23,23	1.85	3 (18%)	20,34,34	2.58	12 (60%)
5	PG4	B	404	-	12,12,12	0.52	0	11,11,11	0.50	0
3	PEG	A	403	-	6,6,6	0.36	0	5,5,5	0.41	0
6	EDO	A	409	-	3,3,3	0.49	0	2,2,2	0.27	0

In the following table, the Chirals column lists the number of chiral outliers, the number of chiral centers analysed, the number of these observed in the model and the number defined in the Chemical Component Dictionary. Similar counts are reported in the Torsion and Rings columns. '-' means no outliers of that kind were identified.

Mol	Type	Chain	Res	Link	Chirals	Torsions	Rings
8	PGE	B	405	-	-	4/7/7/7	-
3	PEG	B	403	-	-	1/4/4/4	-
5	PG4	A	405	-	-	4/10/10/10	-
3	PEG	A	402	-	-	1/4/4/4	-
3	PEG	B	402	-	-	1/4/4/4	-
2	2VF	B	401	-	-	1/4/17/17	0/3/3/3
2	2VF	A	401	-	-	0/4/17/17	0/3/3/3
5	PG4	B	404	-	-	7/10/10/10	-

Continued on next page...

Continued from previous page...

Mol	Type	Chain	Res	Link	Chirals	Torsions	Rings
3	PEG	A	403	-	-	2/4/4/4	-
6	EDO	A	409	-	-	0/1/1/1	-

All (5) bond length outliers are listed below:

Mol	Chain	Res	Type	Atoms	Z	Observed(Å)	Ideal(Å)
2	A	401	2VF	C11-C5	5.97	1.48	1.38
2	B	401	2VF	C11-C5	5.71	1.47	1.38
2	B	401	2VF	C12-C13	-2.98	1.49	1.52
2	A	401	2VF	C12-C13	-2.16	1.50	1.52
2	A	401	2VF	C-CL	2.06	1.79	1.74

All (18) bond angle outliers are listed below:

Mol	Chain	Res	Type	Atoms	Z	Observed(°)	Ideal(°)
2	A	401	2VF	C12-C13-N1	6.00	119.28	113.74
2	B	401	2VF	O2-C13-C12	-5.36	117.22	121.54
2	A	401	2VF	O2-C13-C12	-4.50	117.91	121.54
2	B	401	2VF	C12-C13-N1	3.93	117.37	113.74
2	B	401	2VF	C13-C12-N	3.72	115.08	110.94
2	A	401	2VF	C14-C-CL	3.33	123.80	119.64
2	A	401	2VF	C13-C12-N	3.06	114.34	110.94
2	A	401	2VF	C2-C1-C	3.02	122.72	119.21
2	A	401	2VF	C1-C-CL	-3.02	114.64	119.35
2	A	401	2VF	C2-C3-C4	-2.67	117.31	120.94
2	B	401	2VF	C11-N-C3	2.61	111.83	106.63
2	B	401	2VF	C7-C8-C10	2.59	113.97	108.92
2	A	401	2VF	C7-C8-C9	-2.52	106.53	111.88
2	A	401	2VF	C7-C8-C10	2.47	113.75	108.92
2	B	401	2VF	C5-C11-N	2.43	110.00	107.01
2	A	401	2VF	C5-C11-N	2.20	109.71	107.01
2	A	401	2VF	C14-C4-C3	2.14	122.21	119.65
2	A	401	2VF	C11-N-C3	2.11	110.83	106.63

There are no chirality outliers.

All (21) torsion outliers are listed below:

Mol	Chain	Res	Type	Atoms
2	B	401	2VF	N-C12-C13-N1
5	B	404	PG4	O2-C3-C4-O3
8	B	405	PGE	O2-C3-C4-O3

Continued on next page...

Continued from previous page...

Mol	Chain	Res	Type	Atoms
5	A	405	PG4	O1-C1-C2-O2
3	A	403	PEG	O1-C1-C2-O2
5	A	405	PG4	O3-C5-C6-O4
3	B	403	PEG	O2-C3-C4-O4
3	B	402	PEG	C1-C2-O2-C3
5	B	404	PG4	C5-C6-O4-C7
8	B	405	PGE	C3-C4-O3-C5
5	B	404	PG4	C6-C5-O3-C4
5	B	404	PG4	O3-C5-C6-O4
8	B	405	PGE	C4-C3-O2-C2
5	B	404	PG4	C8-C7-O4-C6
5	B	404	PG4	C4-C3-O2-C2
5	A	405	PG4	C1-C2-O2-C3
5	B	404	PG4	O1-C1-C2-O2
3	A	403	PEG	O2-C3-C4-O4
5	A	405	PG4	C3-C4-O3-C5
8	B	405	PGE	C1-C2-O2-C3
3	A	402	PEG	O2-C3-C4-O4

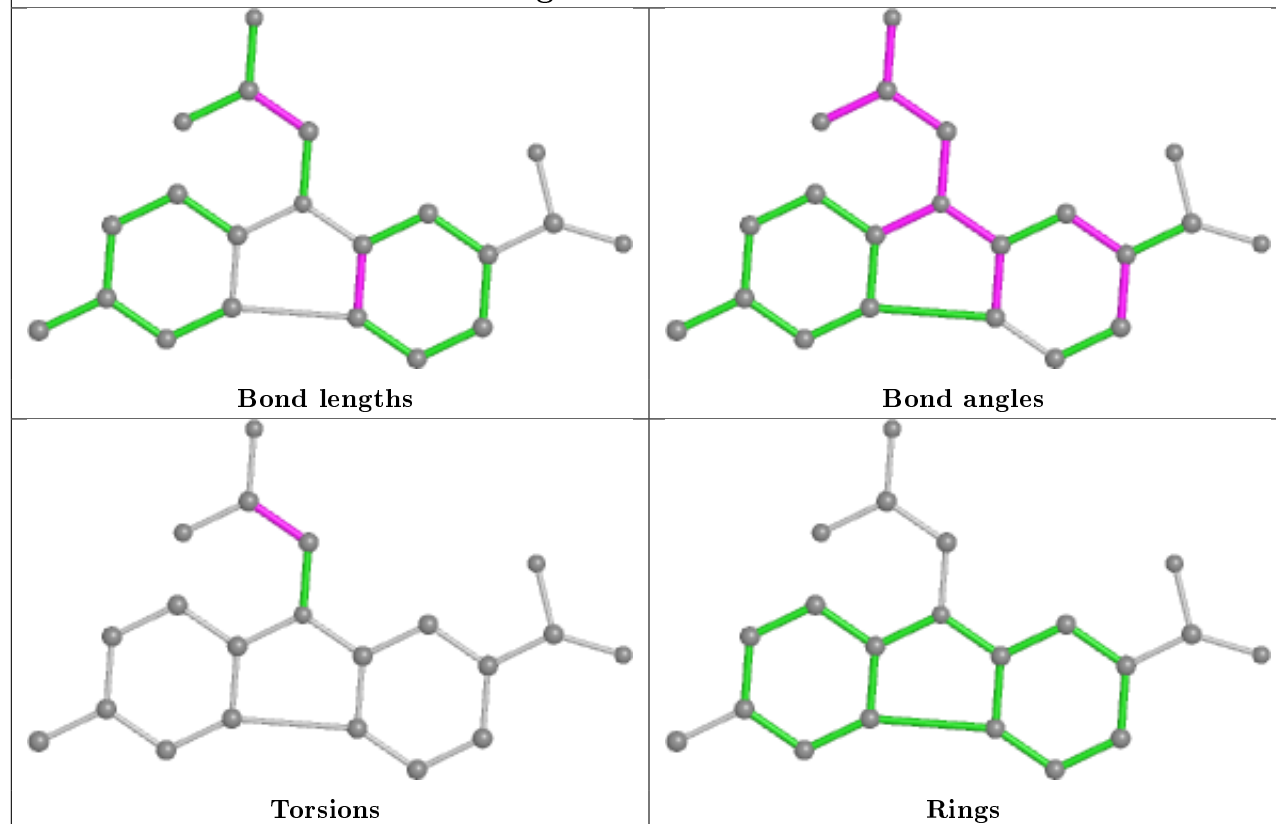
There are no ring outliers.

3 monomers are involved in 4 short contacts:

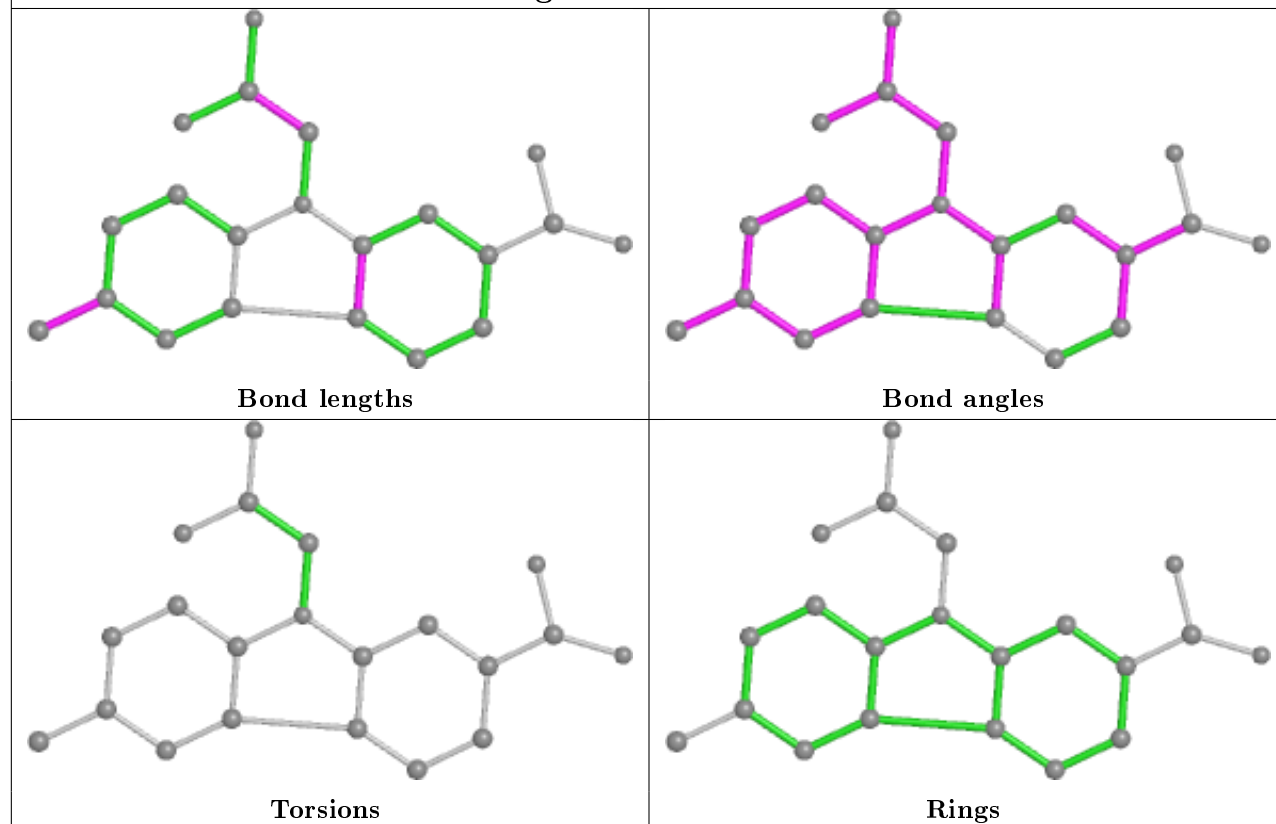
Mol	Chain	Res	Type	Clashes	Symm-Clashes
8	B	405	PGE	1	0
3	B	403	PEG	1	0
5	B	404	PG4	2	0

The following is a two-dimensional graphical depiction of Mogul quality analysis of bond lengths, bond angles, torsion angles, and ring geometry for all instances of the Ligand of Interest. In addition, ligands with molecular weight > 250 and outliers as shown on the validation Tables will also be included. For torsion angles, if less than 5% of the Mogul distribution of torsion angles is within 10 degrees of the torsion angle in question, then that torsion angle is considered an outlier. Any bond that is central to one or more torsion angles identified as an outlier by Mogul will be highlighted in the graph. For rings, the root-mean-square deviation (RMSD) between the ring in question and similar rings identified by Mogul is calculated over all ring torsion angles. If the average RMSD is greater than 60 degrees and the minimal RMSD between the ring in question and any Mogul-identified rings is also greater than 60 degrees, then that ring is considered an outlier. The outliers are highlighted in purple. The color gray indicates Mogul did not find sufficient equivalents in the CSD to analyse the geometry.

Ligand 2VF B 401



Ligand 2VF A 401



5.7 Other polymers

There are no such residues in this entry.

5.8 Polymer linkage issues

There are no chain breaks in this entry.

6 Fit of model and data

6.1 Protein, DNA and RNA chains

In the following table, the column labelled ‘#RSRZ> 2’ contains the number (and percentage) of RSRZ outliers, followed by percent RSRZ outliers for the chain as percentile scores relative to all X-ray entries and entries of similar resolution. The OWAB column contains the minimum, median, 95th percentile and maximum values of the occupancy-weighted average B-factor per residue. The column labelled ‘Q< 0.9’ lists the number of (and percentage) of residues with an average occupancy less than 0.9.

Mol	Chain	Analysed	<RSRZ>	#RSRZ>2	OWAB(Å ²)	Q<0.9
1	A	361/366 (98%)	0.08	16 (4%) 34 37	9, 19, 35, 56	1 (0%)
1	B	366/366 (100%)	-0.13	7 (1%) 66 69	8, 16, 29, 44	0
All	All	727/732 (99%)	-0.03	23 (3%) 47 50	8, 17, 33, 56	1 (0%)

All (23) RSRZ outliers are listed below:

Mol	Chain	Res	Type	RSRZ
1	A	366	LEU	5.2
1	A	365	ARG	4.8
1	B	23	GLY	4.6
1	A	209	GLY	3.9
1	B	22	GLY	3.8
1	A	278	PHE	3.7
1	A	311	SER	3.5
1	A	211	ASP	3.2
1	A	210	GLY	2.9
1	A	148	HIS	2.8
1	B	366	LEU	2.8
1	B	95	GLU	2.7
1	B	120	ASP	2.6
1	A	120	ASP	2.6
1	A	208	ASP	2.6
1	A	212	ASN	2.4
1	A	19	GLY	2.3
1	A	205	ARG	2.3
1	B	244	TYR	2.3
1	B	94	GLY	2.3
1	A	94	GLY	2.2
1	A	118	ASN	2.0
1	A	22	GLY	2.0

6.2 Non-standard residues in protein, DNA, RNA chains [i](#)

There are no non-standard protein/DNA/RNA residues in this entry.

6.3 Carbohydrates [i](#)

There are no carbohydrates in this entry.

6.4 Ligands [i](#)

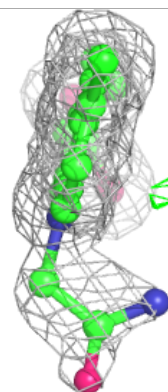
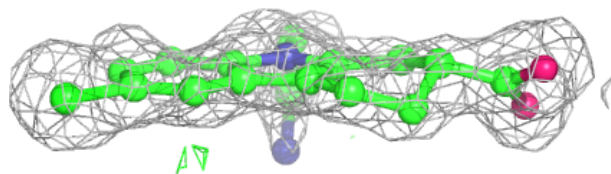
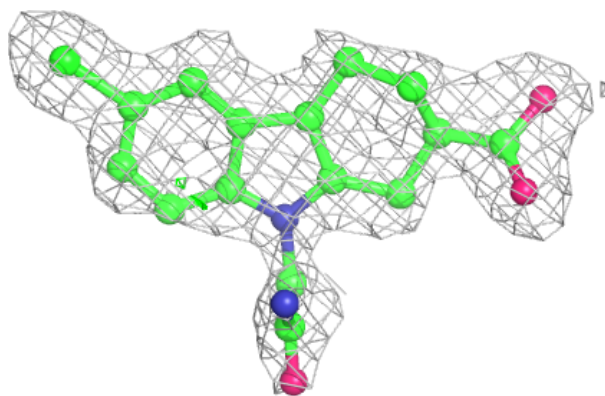
In the following table, the Atoms column lists the number of modelled atoms in the group and the number defined in the chemical component dictionary. The B-factors column lists the minimum, median, 95th percentile and maximum values of B factors of atoms in the group. The column labelled 'Q< 0.9' lists the number of atoms with occupancy less than 0.9.

Mol	Type	Chain	Res	Atoms	RSCC	RSR	B-factors(\AA^2)	Q<0.9
6	EDO	A	409	4/4	0.71	0.22	42,43,43,44	0
8	PGE	B	405	10/10	0.74	0.28	41,56,57,58	0
3	PEG	A	402	7/7	0.77	0.20	34,36,37,37	0
2	2VF	A	401	21/21	0.83	0.17	16,20,29,30	21
3	PEG	B	403	7/7	0.83	0.26	42,42,45,46	0
3	PEG	A	403	7/7	0.84	0.16	43,44,46,48	0
7	CL	B	406	1/1	0.86	0.10	53,53,53,53	0
5	PG4	A	405	13/13	0.88	0.12	31,33,38,40	0
5	PG4	B	404	13/13	0.88	0.12	35,37,43,43	0
3	PEG	B	402	7/7	0.90	0.14	43,43,45,45	0
2	2VF	B	401	21/21	0.91	0.12	15,19,20,22	21
4	CA	A	408	1/1	0.93	0.06	46,46,46,46	0
7	CL	A	410	1/1	0.94	0.11	38,38,38,38	0
4	CA	A	407	1/1	0.94	0.15	42,42,42,42	0
4	CA	A	404	1/1	0.98	0.19	38,38,38,38	0
4	CA	A	406	1/1	0.99	0.16	33,33,33,33	0

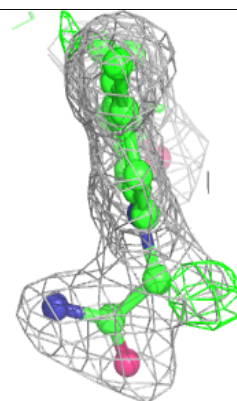
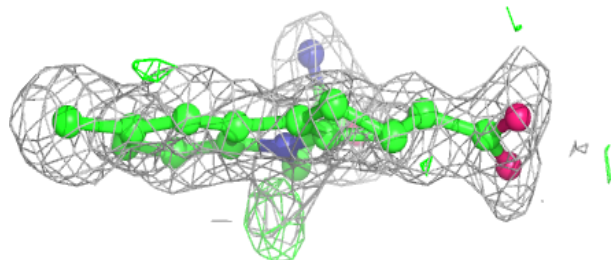
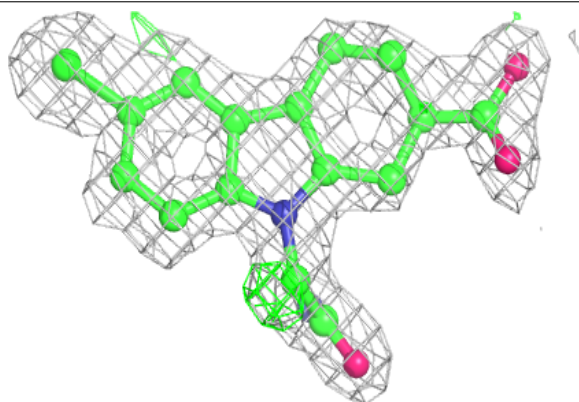
The following is a graphical depiction of the model fit to experimental electron density of all instances of the Ligand of Interest. In addition, ligands with molecular weight > 250 and outliers as shown on the geometry validation Tables will also be included. Each fit is shown from different orientation to approximate a three-dimensional view.

Electron density around 2VF A 401:

$2mF_o-DF_c$ (at 0.7 rmsd) in gray
 mF_o-DF_c (at 3 rmsd) in purple (negative)
and green (positive)

**Electron density around 2VF B 401:**

$2mF_o-DF_c$ (at 0.7 rmsd) in gray
 mF_o-DF_c (at 3 rmsd) in purple (negative)
and green (positive)



6.5 Other polymers [i](#)

There are no such residues in this entry.