



Full wwPDB X-ray Structure Validation Report ⓘ

May 26, 2020 – 11:45 pm BST

PDB ID : 3OYB
Title : Crystal structure of the Prototype Foamy Virus (PFV) intasome in complex with magnesium and the INSTI MK2048
Authors : Hare, S.; Cherepanov, P.
Deposited on : 2010-09-23
Resolution : 2.54 Å(reported)

This is a Full wwPDB X-ray Structure Validation Report for a publicly released PDB entry.

We welcome your comments at validation@mail.wwpdb.org

A user guide is available at

<https://www.wwpdb.org/validation/2017/XrayValidationReportHelp>

with specific help available everywhere you see the ⓘ symbol.

The following versions of software and data (see [references ⓘ](#)) were used in the production of this report:

MolProbity	:	4.02b-467
Mogul	:	1.8.5 (274361), CSD as541be (2020)
Xtriage (Phenix)	:	1.13
EDS	:	2.11
buster-report	:	1.1.7 (2018)
Percentile statistics	:	20191225.v01 (using entries in the PDB archive December 25th 2019)
Refmac	:	5.8.0158
CCP4	:	7.0.044 (Gargrove)
Ideal geometry (proteins)	:	Engh & Huber (2001)
Ideal geometry (DNA, RNA)	:	Parkinson et al. (1996)
Validation Pipeline (wwPDB-VP)	:	2.11

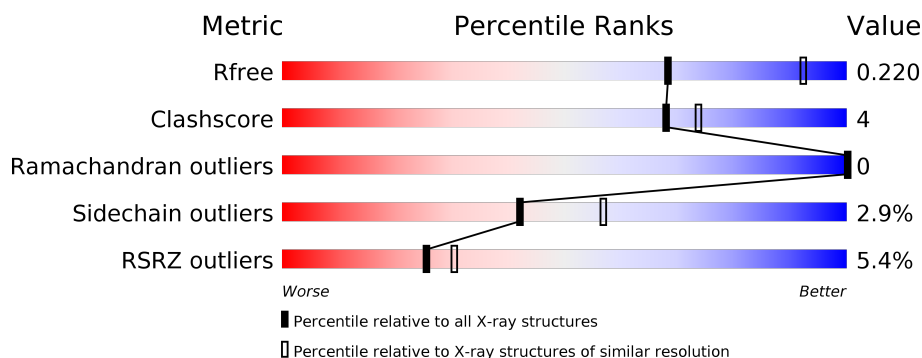
1 Overall quality at a glance

The following experimental techniques were used to determine the structure:

X-RAY DIFFRACTION

The reported resolution of this entry is 2.54 Å.

Percentile scores (ranging between 0-100) for global validation metrics of the entry are shown in the following graphic. The table shows the number of entries on which the scores are based.



Metric	Whole archive (#Entries)	Similar resolution (#Entries, resolution range(Å))
R_{free}	130704	1284 (2.56-2.52)
Clashscore	141614	1332 (2.56-2.52)
Ramachandran outliers	138981	1315 (2.56-2.52)
Sidechain outliers	138945	1315 (2.56-2.52)
RSRZ outliers	127900	1272 (2.56-2.52)

The table below summarises the geometric issues observed across the polymeric chains and their fit to the electron density. The red, orange, yellow and green segments on the lower bar indicate the fraction of residues that contain outliers for ≥ 3 , 2, 1 and 0 types of geometric quality criteria respectively. A grey segment represents the fraction of residues that are not modelled. The numeric value for each fraction is indicated below the corresponding segment, with a dot representing fractions $\leq 5\%$. The upper red bar (where present) indicates the fraction of residues that have poor fit to the electron density. The numeric value is given above the bar.

Mol	Chain	Length	Quality of chain
1	A	395	<div> <div>4%</div> <div> <div></div> <div>82%</div> <div>11%</div> <div>7%</div> </div> </div>
1	B	395	<div> <div>4%</div> <div> <div></div> <div>41%</div> <div>5%</div> <div>53%</div> </div> </div>
2	C	19	<div> <div>5%</div> <div> <div></div> <div>53%</div> <div>37%</div> <div>11%</div> </div> </div>
3	D	17	<div> <div></div> <div> <div></div> <div>47%</div> <div>41%</div> <div>12%</div> </div> </div>

2 Entry composition [i](#)

There are 10 unique types of molecules in this entry. The entry contains 5398 atoms, of which 0 are hydrogens and 0 are deuteriums.

In the tables below, the ZeroOcc column contains the number of atoms modelled with zero occupancy, the AltConf column contains the number of residues with at least one atom in alternate conformation and the Trace column contains the number of residues modelled with at most 2 atoms.

- Molecule 1 is a protein called PFV integrase.

Mol	Chain	Residues	Atoms					ZeroOcc	AltConf	Trace
1	A	368	Total	C	N	O	S	0	0	0
			2920	1872	512	532	4			
1	B	184	Total	C	N	O	S	0	0	0
			1423	922	233	267	1			

There are 10 discrepancies between the modelled and reference sequences:

Chain	Residue	Modelled	Actual	Comment	Reference
A	-2	GLY	-	EXPRESSION TAG	UNP P14350
A	-1	PRO	-	EXPRESSION TAG	UNP P14350
A	0	GLY	-	EXPRESSION TAG	UNP P14350
A	217	SER	GLY	VARIANT	UNP P14350
A	218	GLY	SER	VARIANT	UNP P14350
B	-2	GLY	-	EXPRESSION TAG	UNP P14350
B	-1	PRO	-	EXPRESSION TAG	UNP P14350
B	0	GLY	-	EXPRESSION TAG	UNP P14350
B	217	SER	GLY	VARIANT	UNP P14350
B	218	GLY	SER	VARIANT	UNP P14350

- Molecule 2 is a DNA chain called DNA (5'-D(*AP*TP*TP*GP*TP*CP*AP*TP*GP*GP*AP*AP*TP*TP*TP*CP*GP*CP*A)-3').

Mol	Chain	Residues	Atoms					ZeroOcc	AltConf	Trace
2	C	19	Total	C	N	O	P	0	0	0
			387	187	68	114	18			

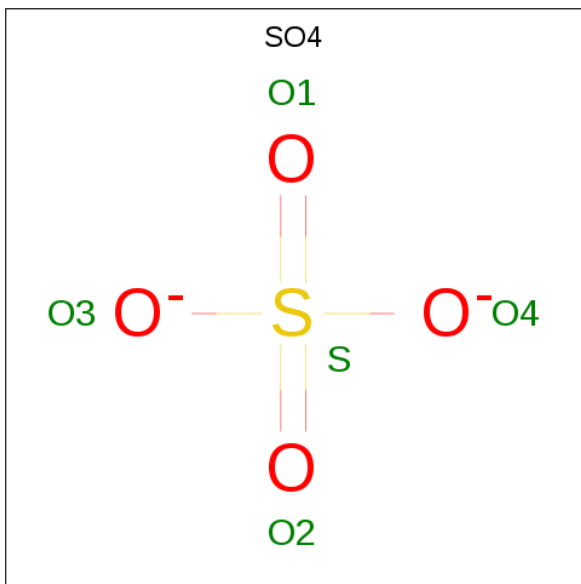
- Molecule 3 is a DNA chain called DNA (5'-D(*TP*GP*CP*GP*AP*AP*AP*TP*TP*CP*CP*AP*TP*GP*AP*CP*A)-3').

Mol	Chain	Residues	Atoms					ZeroOcc	AltConf	Trace
3	D	17	Total	C	N	O	P	0	1	0
			345	166	65	98	16			

- Molecule 4 is ZINC ION (three-letter code: ZN) (formula: Zn).

Mol	Chain	Residues	Atoms		ZeroOcc	AltConf
4	A	1	Total	Zn	0	0
			1	1		

- Molecule 5 is SULFATE ION (three-letter code: SO4) (formula: O₄S).



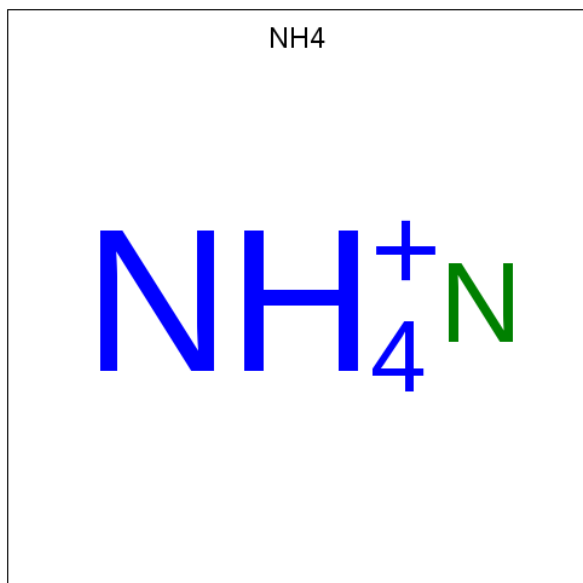
Mol	Chain	Residues	Atoms			ZeroOcc	AltConf
5	A	1	Total	O	S	0	0
			5	4	1		
5	B	1	Total	O	S	0	0
			5	4	1		

- Molecule 6 is GLYCEROL (three-letter code: GOL) (formula: C₃H₈O₃).



Mol	Chain	Residues	Atoms			ZeroOcc	AltConf
6	A	1	Total	C	O	0	0
			6	3	3		
6	A	1	Total	C	O	0	0
			6	3	3		
6	A	1	Total	C	O	0	0
			6	3	3		
6	A	1	Total	C	O	0	0
			6	3	3		

- Molecule 7 is AMMONIUM ION (three-letter code: NH4) (formula: H₄N).

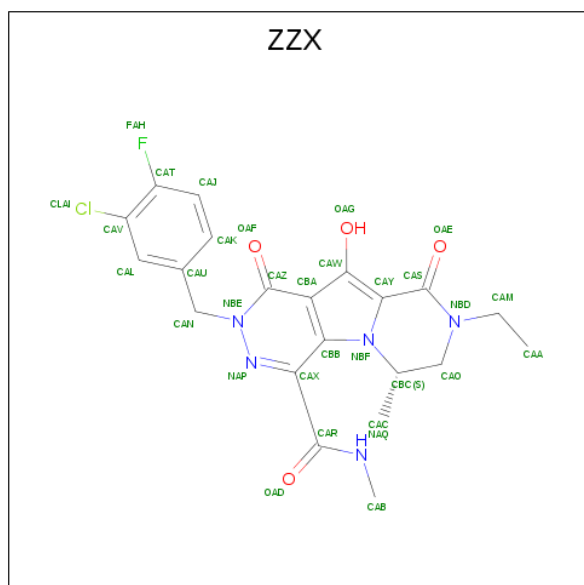


Mol	Chain	Residues	Atoms	ZeroOcc	AltConf
7	A	1	Total N 1 1	0	0

- Molecule 8 is MAGNESIUM ION (three-letter code: MG) (formula: Mg).

Mol	Chain	Residues	Atoms	ZeroOcc	AltConf
8	B	1	Total Mg 1 1	0	0
8	A	2	Total Mg 2 2	0	0

- Molecule 9 is (6S)-2-(3-chloro-4-fluorobenzyl)-8-ethyl-10-hydroxy-N,6-dimethyl-1,9-dioxo-1,2,6,7,8,9-hexahydropyrazino[1',2':1,5]pyrrolo[2,3-d]pyridazine-4-carboxamide (three-letter code: ZZX) (formula: C₂₁H₂₁ClFN₅O₄).



Mol	Chain	Residues	Atoms					ZeroOcc	AltConf
9	A	1	Total	C	Cl	F	N	O	
			32	21	1	1	5	4	

- Molecule 10 is water.

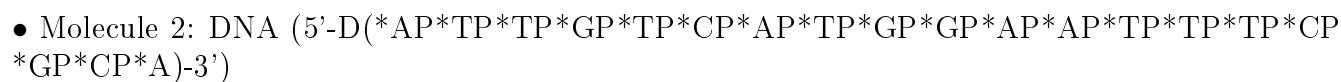
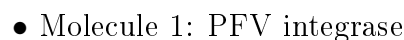
Mol	Chain	Residues	Atoms	ZeroOcc	AltConf
10	A	151	Total O 151 151	0	0
10	B	44	Total O 44 44	0	0

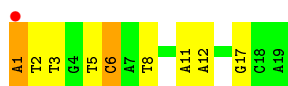
Continued on next page...

Continued from previous page...

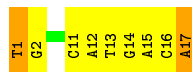
Mol	Chain	Residues	Atoms		ZeroOcc	AltConf
10	C	38	Total	O	0	0
			38	38		
10	D	19	Total	O	0	0
			19	19		

- Molecule 1: PFV integrase





- Molecule 3: DNA (5'-D(*TP*GP*CP*GP*AP*AP*AP*TP*TP*CP*CP*AP*TP*GP*AP*CP*A)-3')



4 Data and refinement statistics

Property	Value	Source
Space group	P 41 21 2	Depositor
Cell constants a, b, c, α , β , γ	159.93Å 159.93Å 123.33Å 90.00° 90.00° 90.00°	Depositor
Resolution (Å)	39.10 – 2.54 39.10 – 2.54	Depositor EDS
% Data completeness (in resolution range)	99.1 (39.10-2.54) 99.1 (39.10-2.54)	Depositor EDS
R_{merge}	(Not available)	Depositor
R_{sym}	0.10	Depositor
$\langle I/\sigma(I) \rangle$ ¹	1.77 (at 2.54Å)	Xtriage
Refinement program	REFMAC	Depositor
R, R_{free}	0.203 , 0.224 0.198 , 0.220	Depositor DCC
R_{free} test set	2672 reflections (5.06%)	wwPDB-VP
Wilson B-factor (Å ²)	55.6	Xtriage
Anisotropy	0.275	Xtriage
Bulk solvent k_{sol} (e/Å ³), B_{sol} (Å ²)	0.33 , 47.1	EDS
L-test for twinning ²	$\langle L \rangle = 0.49$, $\langle L^2 \rangle = 0.32$	Xtriage
Estimated twinning fraction	No twinning to report.	Xtriage
F_o, F_c correlation	0.95	EDS
Total number of atoms	5398	wwPDB-VP
Average B, all atoms (Å ²)	53.0	wwPDB-VP

Xtriage's analysis on translational NCS is as follows: *The largest off-origin peak in the Patterson function is 3.27% of the height of the origin peak. No significant pseudotranslation is detected.*

¹Intensities estimated from amplitudes.

²Theoretical values of $\langle |L| \rangle$, $\langle L^2 \rangle$ for acentric reflections are 0.5, 0.333 respectively for untwinned datasets, and 0.375, 0.2 for perfectly twinned datasets.

5 Model quality [i](#)

5.1 Standard geometry [i](#)

Bond lengths and bond angles in the following residue types are not validated in this section: GOL, MG, ZZX, ZN, NH4, SO4

The Z score for a bond length (or angle) is the number of standard deviations the observed value is removed from the expected value. A bond length (or angle) with $|Z| > 5$ is considered an outlier worth inspection. RMSZ is the root-mean-square of all Z scores of the bond lengths (or angles).

Mol	Chain	Bond lengths		Bond angles	
		RMSZ	$\# Z > 5$	RMSZ	$\# Z > 5$
1	A	0.57	0/2999	0.65	0/4094
1	B	0.57	0/1463	0.61	0/2003
2	C	1.00	0/433	1.75	12/667 (1.8%)
3	D	1.13	1/387 (0.3%)	1.88	13/595 (2.2%)
All	All	0.67	1/5282 (0.0%)	0.95	25/7359 (0.3%)

All (1) bond length outliers are listed below:

Mol	Chain	Res	Type	Atoms	Z	Observed(Å)	Ideal(Å)
3	D	16	DC	C3'-O3'	-5.10	1.37	1.44

All (25) bond angle outliers are listed below:

Mol	Chain	Res	Type	Atoms	Z	Observed(°)	Ideal(°)
3	D	17[A]	DA	O5'-P-OP2	-9.20	97.42	105.70
2	C	12	DA	O4'-C1'-N9	-7.92	102.46	108.00
3	D	13	DT	O4'-C1'-N1	-7.39	102.83	108.00
3	D	12	DA	O4'-C1'-N9	-7.18	102.97	108.00
2	C	3	DT	C5-C4-O4	-6.82	120.13	124.90
2	C	8	DT	C6-C5-C7	-6.77	118.84	122.90
3	D	1	DT	P-O3'-C3'	6.74	127.78	119.70
2	C	8	DT	O4'-C4'-C3'	-6.57	101.87	104.50
3	D	1	DT	O4'-C4'-C3'	-6.50	101.90	104.50
2	C	8	DT	C4-C5-C7	6.18	122.71	119.00
3	D	16	DC	O4'-C4'-C3'	-6.04	102.08	104.50
3	D	16	DC	P-O3'-C3'	5.99	126.89	119.70
2	C	17	DG	O4'-C1'-N9	-5.77	103.96	108.00
2	C	5	DT	O4'-C1'-N1	-5.74	103.98	108.00
2	C	5	DT	P-O3'-C3'	5.65	126.48	119.70
3	D	17[A]	DA	O4'-C1'-N9	5.57	111.90	108.00

Continued on next page...

Continued from previous page...

Mol	Chain	Res	Type	Atoms	Z	Observed(°)	Ideal(°)
3	D	15	DA	O4'-C4'-C3'	5.57	109.34	106.00
2	C	1	DA	P-O3'-C3'	5.47	126.26	119.70
3	D	16	DC	O3'-P-O5'	5.25	113.98	104.00
2	C	3	DT	O4'-C1'-N1	5.24	111.67	108.00
3	D	17[A]	DA	C5'-C4'-C3'	-5.21	104.71	114.10
3	D	14	DG	N1-C6-O6	-5.14	116.81	119.90
3	D	11	DC	O4'-C1'-N1	5.14	111.60	108.00
2	C	6	DC	O4'-C1'-N1	5.13	111.59	108.00
2	C	11	DA	P-O3'-C3'	5.03	125.74	119.70

There are no chirality outliers.

There are no planarity outliers.

5.2 Too-close contacts

In the following table, the Non-H and H(model) columns list the number of non-hydrogen atoms and hydrogen atoms in the chain respectively. The H(added) column lists the number of hydrogen atoms added and optimized by MolProbity. The Clashes column lists the number of clashes within the asymmetric unit, whereas Symm-Clashes lists symmetry related clashes.

Mol	Chain	Non-H	H(model)	H(added)	Clashes	Symm-Clashes
1	A	2920	0	2945	23	0
1	B	1423	0	1384	10	0
2	C	387	0	218	2	0
3	D	345	0	193	2	0
4	A	1	0	0	0	0
5	A	5	0	0	0	0
5	B	5	0	0	0	0
6	A	24	0	32	2	0
7	A	1	0	0	0	0
8	A	2	0	0	0	0
8	B	1	0	0	0	0
9	A	32	0	20	2	0
10	A	151	0	0	2	0
10	B	44	0	0	0	0
10	C	38	0	0	0	0
10	D	19	0	0	0	0
All	All	5398	0	4792	37	0

The all-atom clashscore is defined as the number of clashes found per 1000 atoms (including hydrogen atoms). The all-atom clashscore for this structure is 4.

All (37) close contacts within the same asymmetric unit are listed below, sorted by their clash magnitude.

Atom-1	Atom-2	Interatomic distance (Å)	Clash overlap (Å)
1:A:137:GLN:H	6:A:802:GOL:H2	1.39	0.87
1:B:258:SER:O	1:B:261:LEU:O	1.98	0.82
1:A:162:SER:HB2	6:A:801:GOL:H2	1.69	0.73
1:A:91:LYS:HE2	1:A:95:ARG:HH21	1.63	0.64
1:A:358:LEU:N	1:A:359:GLY:HA2	2.14	0.62
1:A:108:ALA:O	1:A:314:SER:HA	2.00	0.62
9:A:398:ZZX:HANA	3:D:17[A]:DA:H3'	1.85	0.59
1:A:69:ARG:HD2	1:A:70:GLU:OE2	2.05	0.56
1:A:73:LEU:HD22	1:A:86:ARG:CZ	2.36	0.56
1:A:348:ASN:HB2	1:A:349:PRO:CD	2.36	0.55
2:C:1:DA:H3'	2:C:2:DT:H73	1.89	0.54
1:A:14:GLN:HB3	1:A:21:ILE:HD11	1.89	0.54
1:B:141:TYR:CZ	1:B:161:PRO:HD3	2.45	0.52
1:B:163:THR:HG21	1:B:194:THR:HB	1.92	0.51
1:B:141:TYR:CE2	1:B:161:PRO:HD3	2.46	0.50
1:A:98:GLN:OE1	10:A:448:HOH:O	2.19	0.50
1:A:324:GLN:HG2	1:A:340:PRO:HA	1.94	0.49
1:A:219:LYS:HE3	2:C:6:DC:OP1	2.13	0.48
1:A:341:SER:HB2	1:A:355:LEU:O	2.13	0.48
9:A:398:ZZX:OAD	9:A:398:ZZX:HBC	2.14	0.48
1:A:246:LEU:HB2	1:A:247:PRO:HD3	1.95	0.47
1:A:221:GLU:O	1:A:224:ASN:HB2	2.15	0.47
1:B:185:ASP:C	1:B:185:ASP:OD2	2.53	0.47
1:B:182:ILE:HD12	1:B:204:ILE:HG21	1.96	0.46
3:D:1:DT:H2''	3:D:2:DG:OP2	2.15	0.45
1:A:161:PRO:O	1:A:189:ALA:HB2	2.17	0.45
1:A:295:LEU:HD21	1:A:299:ARG:NH2	2.31	0.45
1:A:185:ASP:HA	1:A:209:SER:HB2	1.99	0.44
1:B:156:TYR:HA	1:B:157:PRO:HD2	1.84	0.43
1:B:216:SER:HB2	1:B:217:SER:H	1.42	0.42
1:B:127:ILE:HA	1:B:144:VAL:O	2.19	0.42
1:A:325:GLU:HA	1:A:369:LEU:HD23	2.02	0.42
1:A:122:PHE:O	1:A:179:PRO:HA	2.20	0.42
1:A:97:GLN:NE2	10:A:516:HOH:O	2.27	0.42
1:A:288:ARG:CZ	1:A:292:LEU:HD21	2.48	0.42
1:B:224:ASN:O	1:B:228:LYS:HG3	2.20	0.41
1:A:97:GLN:O	1:A:101:ILE:HG12	2.20	0.40

There are no symmetry-related clashes.

5.3 Torsion angles

5.3.1 Protein backbone

In the following table, the Percentiles column shows the percent Ramachandran outliers of the chain as a percentile score with respect to all X-ray entries followed by that with respect to entries of similar resolution.

The Analysed column shows the number of residues for which the backbone conformation was analysed, and the total number of residues.

Mol	Chain	Analysed	Favoured	Allowed	Outliers	Percentiles	
1	A	366/395 (93%)	355 (97%)	11 (3%)	0	100	100
1	B	182/395 (46%)	174 (96%)	8 (4%)	0	100	100
All	All	548/790 (69%)	529 (96%)	19 (4%)	0	100	100

There are no Ramachandran outliers to report.

5.3.2 Protein sidechains

In the following table, the Percentiles column shows the percent sidechain outliers of the chain as a percentile score with respect to all X-ray entries followed by that with respect to entries of similar resolution.

The Analysed column shows the number of residues for which the sidechain conformation was analysed, and the total number of residues.

Mol	Chain	Analysed	Rotameric	Outliers	Percentiles	
1	A	327/354 (92%)	320 (98%)	7 (2%)	53	68
1	B	154/354 (44%)	147 (96%)	7 (4%)	27	37
All	All	481/708 (68%)	467 (97%)	14 (3%)	42	57

All (14) residues with a non-rotameric sidechain are listed below:

Mol	Chain	Res	Type
1	A	13	ASP
1	A	97	GLN
1	A	149	MET
1	A	316	SER
1	A	351	THR
1	A	357	HIS
1	A	366	ILE
1	B	149	MET

Continued on next page...

Continued from previous page...

Mol	Chain	Res	Type
1	B	164	SER
1	B	194	THR
1	B	215	GLN
1	B	216	SER
1	B	234	LEU
1	B	274	SER

Some sidechains can be flipped to improve hydrogen bonding and reduce clashes. All (4) such sidechains are listed below:

Mol	Chain	Res	Type
1	A	60	GLN
1	A	357	HIS
1	B	215	GLN
1	B	224	ASN

5.3.3 RNA [i](#)

There are no RNA molecules in this entry.

5.4 Non-standard residues in protein, DNA, RNA chains [i](#)

There are no non-standard protein/DNA/RNA residues in this entry.

5.5 Carbohydrates [i](#)

There are no carbohydrates in this entry.

5.6 Ligand geometry [i](#)

Of 12 ligands modelled in this entry, 1 is modelled with single atom and 4 are monoatomic - leaving 7 for Mogul analysis.

In the following table, the Counts columns list the number of bonds (or angles) for which Mogul statistics could be retrieved, the number of bonds (or angles) that are observed in the model and the number of bonds (or angles) that are defined in the Chemical Component Dictionary. The Link column lists molecule types, if any, to which the group is linked. The Z score for a bond length (or angle) is the number of standard deviations the observed value is removed from the expected value. A bond length (or angle) with $|Z| > 2$ is considered an outlier worth inspection. RMSZ is the root-mean-square of all Z scores of the bond lengths (or angles).

Mol	Type	Chain	Res	Link	Bond lengths			Bond angles		
					Counts	RMSZ	# Z > 2	Counts	RMSZ	# Z > 2
6	GOL	A	802	-	5,5,5	0.38	0	5,5,5	0.18	0
5	SO4	B	393	-	4,4,4	0.14	0	6,6,6	0.29	0
6	GOL	A	801	-	5,5,5	0.42	0	5,5,5	0.75	0
6	GOL	A	805	-	5,5,5	0.44	0	5,5,5	0.51	0
9	ZZX	A	398	8	28,35,35	1.26	3 (10%)	31,53,53	2.53	12 (38%)
6	GOL	A	803	-	5,5,5	0.28	0	5,5,5	0.48	0
5	SO4	A	394	-	4,4,4	0.12	0	6,6,6	0.46	0

In the following table, the Chirals column lists the number of chiral outliers, the number of chiral centers analysed, the number of these observed in the model and the number defined in the Chemical Component Dictionary. Similar counts are reported in the Torsion and Rings columns. '-' means no outliers of that kind were identified.

Mol	Type	Chain	Res	Link	Chirals	Torsions	Rings
6	GOL	A	803	-	-	0/4/4/4	-
6	GOL	A	805	-	-	0/4/4/4	-
6	GOL	A	802	-	-	0/4/4/4	-
9	ZZX	A	398	8	-	1/11/28/28	0/3/4/4
6	GOL	A	801	-	-	0/4/4/4	-

All (3) bond length outliers are listed below:

Mol	Chain	Res	Type	Atoms	Z	Observed(Å)	Ideal(Å)
9	A	398	ZZX	CBA-CBB	-3.36	1.38	1.42
9	A	398	ZZX	CAY-CAS	-3.13	1.39	1.46
9	A	398	ZZX	CAX-CAR	2.03	1.53	1.50

All (12) bond angle outliers are listed below:

Mol	Chain	Res	Type	Atoms	Z	Observed(°)	Ideal(°)
9	A	398	ZZX	CAC-CBC-NBF	-9.07	103.31	111.19
9	A	398	ZZX	CAY-CAS-NBD	4.18	118.36	113.20
9	A	398	ZZX	CAV-CAL-CAU	-3.95	117.76	120.46
9	A	398	ZZX	OAE-CAS-CAY	-3.37	119.78	125.33
9	A	398	ZZX	OAD-CAR-CAX	-2.92	116.32	120.68
9	A	398	ZZX	CAN-CAU-CAL	-2.88	115.79	120.25
9	A	398	ZZX	CAW-CBA-CBB	-2.79	107.44	117.46
9	A	398	ZZX	CAK-CAU-CAL	2.77	122.41	118.54
9	A	398	ZZX	CAB-NAQ-CAR	-2.71	118.81	121.89
9	A	398	ZZX	CAX-CAR-NAQ	2.69	119.03	115.74
9	A	398	ZZX	CAX-NAP-NBE	2.13	123.18	118.13
9	A	398	ZZX	CAZ-CBA-CBB	-2.04	118.64	119.96

There are no chirality outliers.

All (1) torsion outliers are listed below:

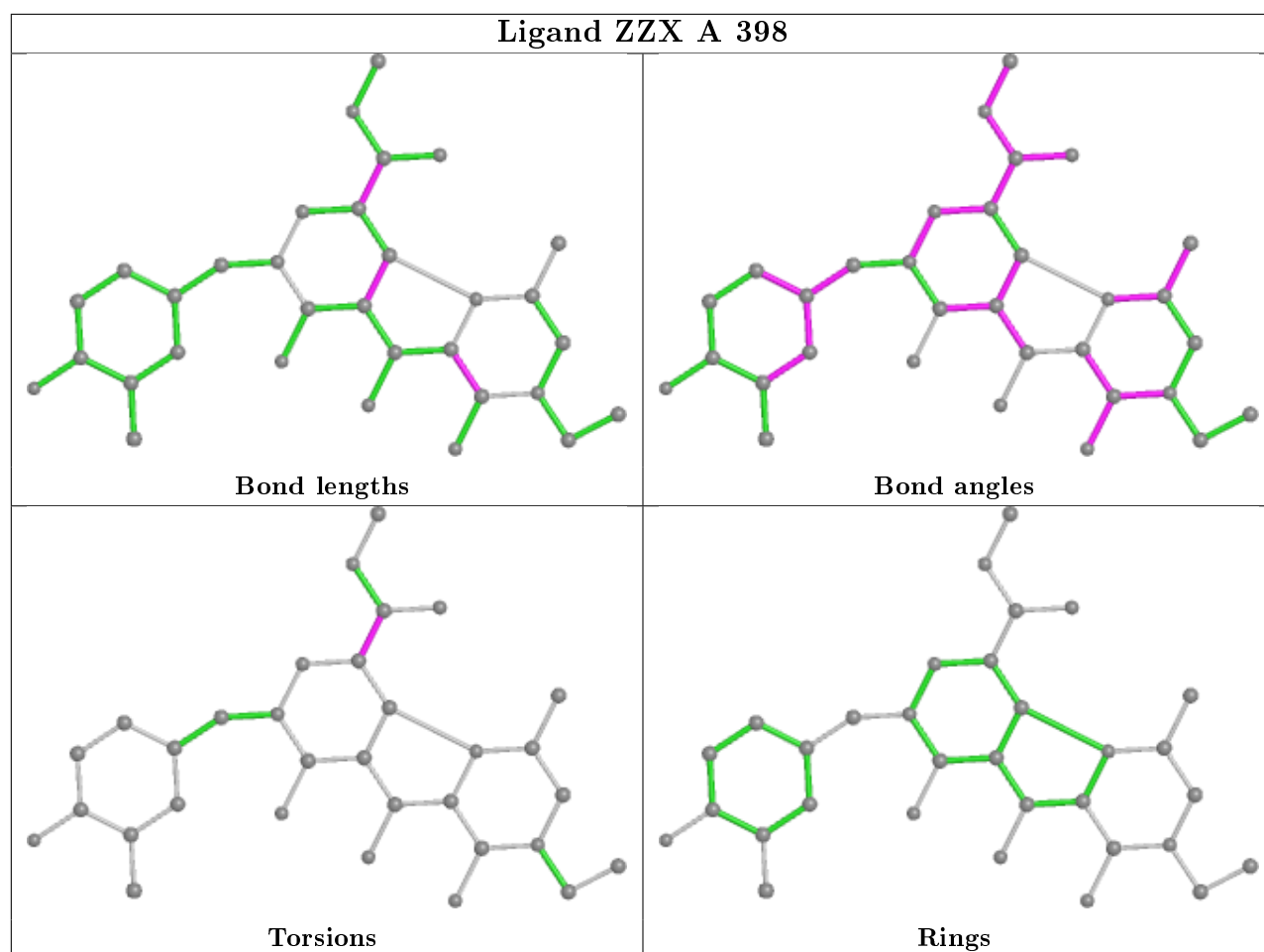
Mol	Chain	Res	Type	Atoms
9	A	398	ZZX	OAD-CAR-CAX-NAP

There are no ring outliers.

3 monomers are involved in 4 short contacts:

Mol	Chain	Res	Type	Clashes	Symm-Clashes
6	A	802	GOL	1	0
6	A	801	GOL	1	0
9	A	398	ZZX	2	0

The following is a two-dimensional graphical depiction of Mogul quality analysis of bond lengths, bond angles, torsion angles, and ring geometry for all instances of the Ligand of Interest. In addition, ligands with molecular weight > 250 and outliers as shown on the validation Tables will also be included. For torsion angles, if less than 5% of the Mogul distribution of torsion angles is within 10 degrees of the torsion angle in question, then that torsion angle is considered an outlier. Any bond that is central to one or more torsion angles identified as an outlier by Mogul will be highlighted in the graph. For rings, the root-mean-square deviation (RMSD) between the ring in question and similar rings identified by Mogul is calculated over all ring torsion angles. If the average RMSD is greater than 60 degrees and the minimal RMSD between the ring in question and any Mogul-identified rings is also greater than 60 degrees, then that ring is considered an outlier. The outliers are highlighted in purple. The color gray indicates Mogul did not find sufficient equivalents in the CSD to analyse the geometry.



5.7 Other polymers [i](#)

There are no such residues in this entry.

5.8 Polymer linkage issues [i](#)

There are no chain breaks in this entry.

6 Fit of model and data ⓘ

6.1 Protein, DNA and RNA chains ⓘ

In the following table, the column labelled ‘#RSRZ> 2’ contains the number (and percentage) of RSRZ outliers, followed by percent RSRZ outliers for the chain as percentile scores relative to all X-ray entries and entries of similar resolution. The OWAB column contains the minimum, median, 95th percentile and maximum values of the occupancy-weighted average B-factor per residue. The column labelled ‘Q< 0.9’ lists the number of (and percentage) of residues with an average occupancy less than 0.9.

Mol	Chain	Analysed	<RSRZ>	#RSRZ>2	OWAB(Å ²)	Q<0.9
1	A	368/395 (93%)	0.12	14 (3%) 40 47	32, 46, 84, 105	0
1	B	184/395 (46%)	0.21	17 (9%) 9 10	38, 54, 132, 142	0
2	C	19/19 (100%)	-0.23	1 (5%) 26 31	35, 48, 77, 102	0
3	D	17/17 (100%)	-0.29	0 100 100	36, 44, 68, 96	0
All	All	588/826 (71%)	0.12	32 (5%) 25 30	32, 48, 99, 142	0

All (32) RSRZ outliers are listed below:

Mol	Chain	Res	Type	RSRZ
1	A	9	ASP	5.4
1	B	279	ALA	5.4
1	A	8	LEU	5.3
1	B	280	ASN	5.0
1	B	296	GLN	4.9
1	A	16	LEU	4.3
1	B	295	LEU	4.0
1	B	293	SER	3.9
1	A	17	GLN	3.9
1	A	19	HIS	3.7
1	B	297	GLU	3.6
1	B	116	ASP	3.4
1	B	298	ILE	3.3
1	B	289	GLU	3.3
1	B	292	LEU	3.2
1	B	260	VAL	3.2
1	B	299	ARG	3.2
1	B	288	ARG	3.1
1	A	12	LEU	2.9
1	A	15	LEU	2.9
1	B	237	GLY	2.7

Continued on next page...

Continued from previous page...

Mol	Chain	Res	Type	RSRZ
1	A	358	LEU	2.6
1	B	294	LEU	2.4
1	A	32	LEU	2.4
1	A	237	GLY	2.3
1	A	13	ASP	2.3
2	C	1	DA	2.2
1	A	253	LEU	2.2
1	B	283	THR	2.2
1	B	214	PRO	2.1
1	A	21	ILE	2.0
1	A	10	ALA	2.0

6.2 Non-standard residues in protein, DNA, RNA chains [i](#)

There are no non-standard protein/DNA/RNA residues in this entry.

6.3 Carbohydrates [i](#)

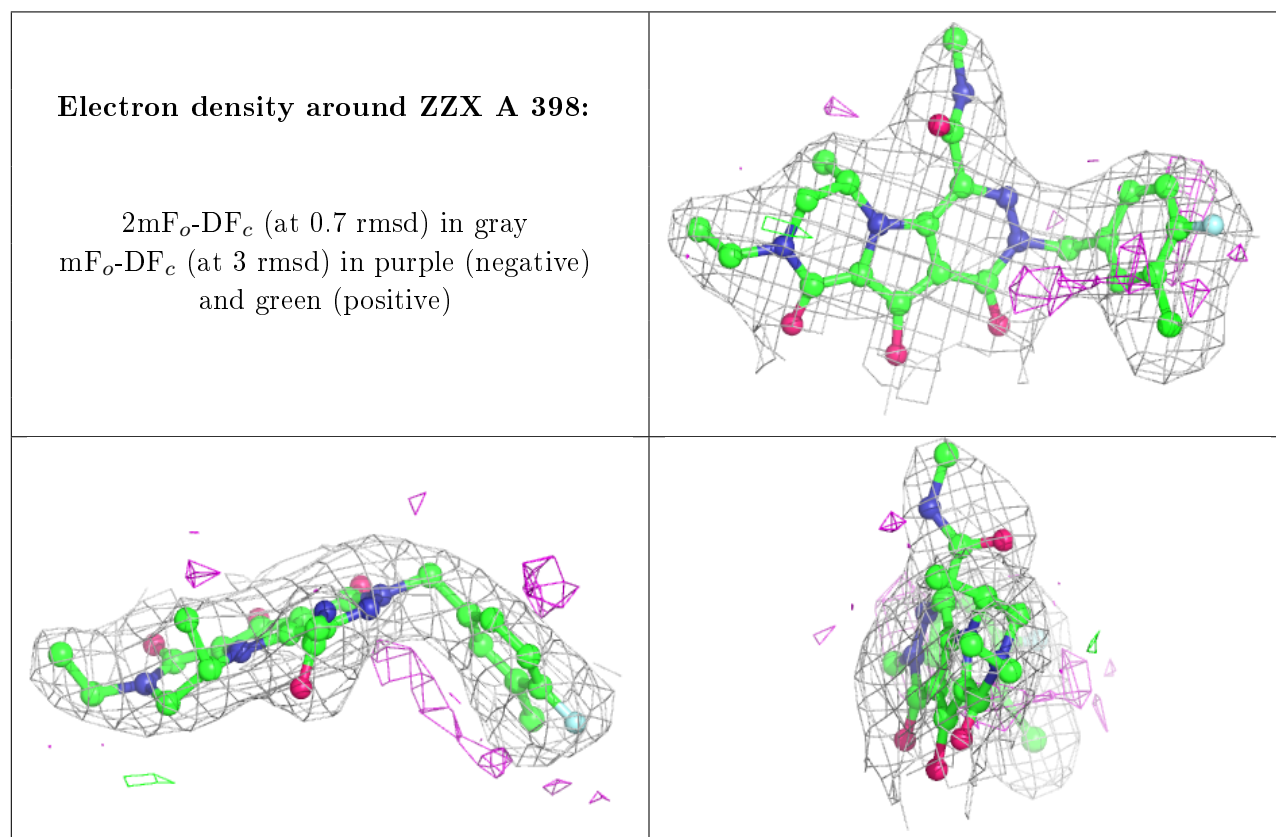
There are no carbohydrates in this entry.

6.4 Ligands [i](#)

In the following table, the Atoms column lists the number of modelled atoms in the group and the number defined in the chemical component dictionary. The B-factors column lists the minimum, median, 95th percentile and maximum values of B factors of atoms in the group. The column labelled 'Q<0.9' lists the number of atoms with occupancy less than 0.9.

Mol	Type	Chain	Res	Atoms	RSCC	RSR	B-factors(Å ²)	Q<0.9
6	GOL	A	802	6/6	0.76	0.22	63,68,70,70	0
6	GOL	A	801	6/6	0.81	0.16	72,74,75,75	0
6	GOL	A	803	6/6	0.84	0.25	55,59,59,62	0
7	NH4	A	395	1/1	0.88	0.43	29,29,29,29	0
8	MG	B	394	1/1	0.91	0.22	89,89,89,89	0
6	GOL	A	805	6/6	0.92	0.19	74,77,77,77	0
5	SO4	B	393	5/5	0.95	0.12	91,92,93,93	0
9	ZZX	A	398	32/32	0.98	0.14	29,38,40,41	0
5	SO4	A	394	5/5	0.98	0.13	61,63,65,66	0
8	MG	A	397	1/1	0.99	0.10	39,39,39,39	0
8	MG	A	396	1/1	0.99	0.09	32,32,32,32	0
4	ZN	A	393	1/1	0.99	0.13	44,44,44,44	0

The following is a graphical depiction of the model fit to experimental electron density of all instances of the Ligand of Interest. In addition, ligands with molecular weight > 250 and outliers as shown on the geometry validation Tables will also be included. Each fit is shown from different orientation to approximate a three-dimensional view.



6.5 Other polymers [i](#)

There are no such residues in this entry.