



Full wwPDB X-ray Structure Validation Report ⓘ

May 26, 2020 – 12:29 pm BST

PDB ID : 3OYZ
Title : Haloferax volcanii Malate Synthase Pyruvate/Acetyl-CoA Ternary Complex
Authors : Howard, B.R.; Bracken, C.; Neighbor, A.; Thomas, G.; Lamle, K.K.; Schubert, H.L.; Whitby, F.G.
Deposited on : 2010-09-24
Resolution : 1.95 Å(reported)

This is a Full wwPDB X-ray Structure Validation Report for a publicly released PDB entry.

We welcome your comments at validation@mail.wwpdb.org

A user guide is available at

<https://www.wwpdb.org/validation/2017/XrayValidationReportHelp>

with specific help available everywhere you see the ⓘ symbol.

The following versions of software and data (see [references ⓘ](#)) were used in the production of this report:

MolProbity	:	4.02b-467
Mogul	:	1.8.5 (274361), CSD as541be (2020)
Xtriage (Phenix)	:	1.13
EDS	:	2.11
buster-report	:	1.1.7 (2018)
Percentile statistics	:	20191225.v01 (using entries in the PDB archive December 25th 2019)
Refmac	:	5.8.0158
CCP4	:	7.0.044 (Gargrove)
Ideal geometry (proteins)	:	Engh & Huber (2001)
Ideal geometry (DNA, RNA)	:	Parkinson et al. (1996)
Validation Pipeline (wwPDB-VP)	:	2.11

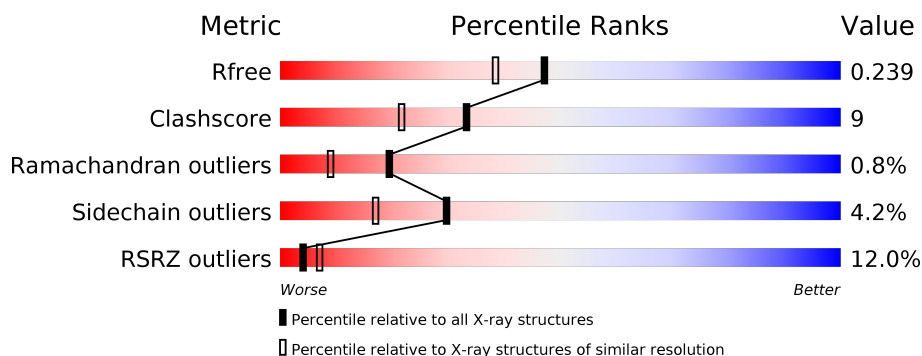
1 Overall quality at a glance

The following experimental techniques were used to determine the structure:

X-RAY DIFFRACTION

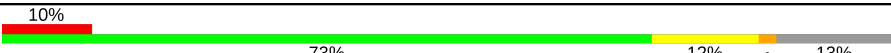
The reported resolution of this entry is 1.95 Å.

Percentile scores (ranging between 0-100) for global validation metrics of the entry are shown in the following graphic. The table shows the number of entries on which the scores are based.



Metric	Whole archive (#Entries)	Similar resolution (#Entries, resolution range(Å))
R_{free}	130704	2580 (1.96-1.96)
Clashscore	141614	2705 (1.96-1.96)
Ramachandran outliers	138981	2678 (1.96-1.96)
Sidechain outliers	138945	2678 (1.96-1.96)
RSRZ outliers	127900	2539 (1.96-1.96)

The table below summarises the geometric issues observed across the polymeric chains and their fit to the electron density. The red, orange, yellow and green segments on the lower bar indicate the fraction of residues that contain outliers for ≥ 3 , 2, 1 and 0 types of geometric quality criteria respectively. A grey segment represents the fraction of residues that are not modelled. The numeric value for each fraction is indicated below the corresponding segment, with a dot representing fractions $\leq 5\%$. The upper red bar (where present) indicates the fraction of residues that have poor fit to the electron density. The numeric value is given above the bar.

Mol	Chain	Length	Quality of chain
1	A	433	

The following table lists non-polymeric compounds, carbohydrate monomers and non-standard residues in protein, DNA, RNA chains that are outliers for geometric or electron-density-fit criteria:

Mol	Type	Chain	Res	Chirality	Geometry	Clashes	Electron density
3	PYR	A	435	-	-	X	-

2 Entry composition [i](#)

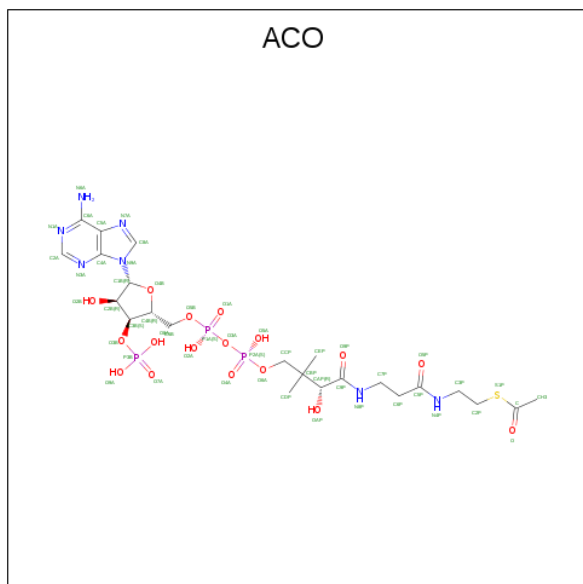
There are 8 unique types of molecules in this entry. The entry contains 3197 atoms, of which 0 are hydrogens and 0 are deuteriums.

In the tables below, the ZeroOcc column contains the number of atoms modelled with zero occupancy, the AltConf column contains the number of residues with at least one atom in alternate conformation and the Trace column contains the number of residues modelled with at most 2 atoms.

- Molecule 1 is a protein called Malate Synthase.

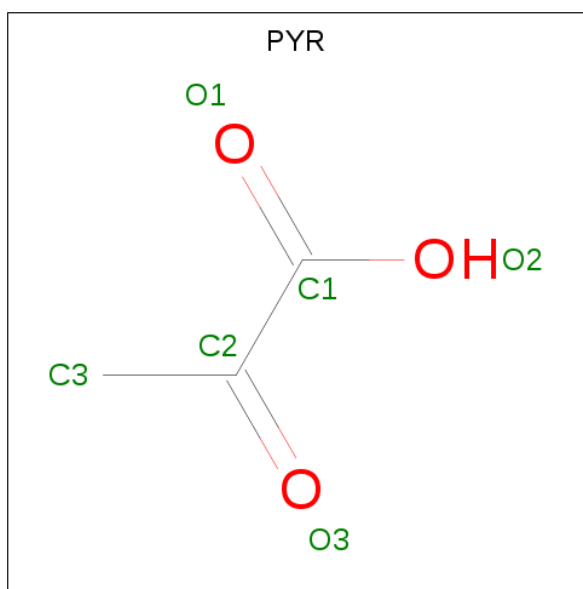
Mol	Chain	Residues	Atoms					ZeroOcc	AltConf	Trace
			Total	C	N	O	S			
1	A	376	2951	1828	507	597	19	0	2	0

- Molecule 2 is ACETYL COENZYME *A (three-letter code: ACO) (formula: $C_{23}H_{38}N_7O_{17}P_3S$).



Mol	Chain	Residues	Atoms						ZeroOcc	AltConf
			Total	C	N	O	P	S		
2	A	1	51	23	7	17	3	1	0	0

- Molecule 3 is PYRUVIC ACID (three-letter code: PYR) (formula: $C_3H_4O_3$).



Mol	Chain	Residues	Atoms			ZeroOcc	AltConf
3	A	1	Total	C	O	0	0
			6	3	3		

- Molecule 4 is MAGNESIUM ION (three-letter code: MG) (formula: Mg).

Mol	Chain	Residues	Atoms		ZeroOcc	AltConf
4	A	1	Total	Mg	0	0
			1	1		

- Molecule 5 is POTASSIUM ION (three-letter code: K) (formula: K).

Mol	Chain	Residues	Atoms		ZeroOcc	AltConf
5	A	3	Total	K	0	0
			3	3		

- Molecule 6 is CHLORIDE ION (three-letter code: CL) (formula: Cl).

Mol	Chain	Residues	Atoms		ZeroOcc	AltConf
6	A	4	Total	Cl	0	0
			4	4		

- Molecule 7 is PHOSPHATE ION (three-letter code: PO4) (formula: O₄P).



Mol	Chain	Residues	Atoms			ZeroOcc	AltConf
7	A	1	Total	O	P	0	0
			5	4	1		

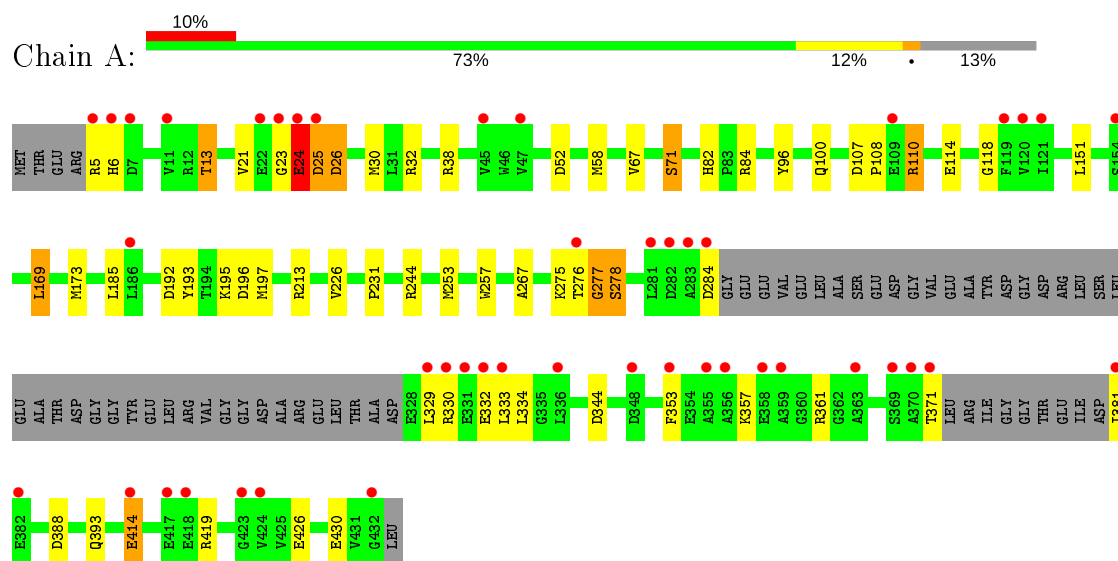
- Molecule 8 is water.

Mol	Chain	Residues	Atoms		ZeroOcc	AltConf
8	A	176	Total	O	0	0
			176	176		

3 Residue-property plots [i](#)

These plots are drawn for all protein, RNA and DNA chains in the entry. The first graphic for a chain summarises the proportions of the various outlier classes displayed in the second graphic. The second graphic shows the sequence view annotated by issues in geometry and electron density. Residues are color-coded according to the number of geometric quality criteria for which they contain at least one outlier: green = 0, yellow = 1, orange = 2 and red = 3 or more. A red dot above a residue indicates a poor fit to the electron density ($RSRZ > 2$). Stretches of 2 or more consecutive residues without any outlier are shown as a green connector. Residues present in the sample, but not in the model, are shown in grey.

• Molecule 1: Malate Synthase



4 Data and refinement statistics

Property	Value	Source
Space group	H 3 2	Depositor
Cell constants a, b, c, α , β , γ	154.79 Å 154.79 Å 142.14 Å 90.00° 90.00° 120.00°	Depositor
Resolution (Å)	30.00 – 1.95 29.25 – 1.95	Depositor EDS
% Data completeness (in resolution range)	99.9 (30.00-1.95) 99.9 (29.25-1.95)	Depositor EDS
R_{merge}	0.10	Depositor
R_{sym}	(Not available)	Depositor
$\langle I/\sigma(I) \rangle$ ¹	1.78 (at 1.95 Å)	Xtriage
Refinement program	REFMAC 5.5.0109	Depositor
R, R_{free}	0.203 , 0.239 0.204 , 0.239	Depositor DCC
R_{free} test set	2404 reflections (5.06%)	wwPDB-VP
Wilson B-factor (Å ²)	34.0	Xtriage
Anisotropy	0.071	Xtriage
Bulk solvent k_{sol} (e/Å ³), B_{sol} (Å ²)	0.33 , 45.1	EDS
L-test for twinning ²	$\langle L \rangle = 0.49$, $\langle L^2 \rangle = 0.32$	Xtriage
Estimated twinning fraction	No twinning to report.	Xtriage
F_o, F_c correlation	0.95	EDS
Total number of atoms	3197	wwPDB-VP
Average B, all atoms (Å ²)	47.0	wwPDB-VP

Xtriage's analysis on translational NCS is as follows: *The largest off-origin peak in the Patterson function is 3.21% of the height of the origin peak. No significant pseudotranslation is detected.*

¹Intensities estimated from amplitudes.

²Theoretical values of $\langle |L| \rangle$, $\langle L^2 \rangle$ for acentric reflections are 0.5, 0.333 respectively for untwinned datasets, and 0.375, 0.2 for perfectly twinned datasets.

5 Model quality

5.1 Standard geometry

Bond lengths and bond angles in the following residue types are not validated in this section: MG, PYR, CL, K, ACO, PO4

The Z score for a bond length (or angle) is the number of standard deviations the observed value is removed from the expected value. A bond length (or angle) with $|Z| > 5$ is considered an outlier worth inspection. RMSZ is the root-mean-square of all Z scores of the bond lengths (or angles).

Mol	Chain	Bond lengths		Bond angles	
		RMSZ	# Z >5	RMSZ	# Z >5
1	A	0.81	0/3018	1.23	16/4086 (0.4%)

Chiral center outliers are detected by calculating the chiral volume of a chiral center and verifying if the center is modelled as a planar moiety or with the opposite hand. A planarity outlier is detected by checking planarity of atoms in a peptide group, atoms in a mainchain group or atoms of a sidechain that are expected to be planar.

Mol	Chain	#Chirality outliers	#Planarity outliers
1	A	0	3

There are no bond length outliers.

All (16) bond angle outliers are listed below:

Mol	Chain	Res	Type	Atoms	Z	Observed(°)	Ideal(°)
1	A	244	ARG	NE-CZ-NH2	-10.31	115.15	120.30
1	A	213	ARG	NE-CZ-NH2	-8.81	115.89	120.30
1	A	84	ARG	NE-CZ-NH1	8.29	124.45	120.30
1	A	5	ARG	NE-CZ-NH2	-8.11	116.25	120.30
1	A	277	GLY	N-CA-C	-7.59	94.12	113.10
1	A	213	ARG	NE-CZ-NH1	7.35	123.98	120.30
1	A	84	ARG	NE-CZ-NH2	-6.56	117.02	120.30
1	A	38	ARG	NE-CZ-NH1	6.54	123.57	120.30
1	A	169	LEU	CA-CB-CG	5.64	128.28	115.30
1	A	151	LEU	CB-CG-CD1	-5.49	101.67	111.00
1	A	52	ASP	CB-CG-OD2	5.46	123.21	118.30
1	A	5	ARG	NE-CZ-NH1	5.42	123.01	120.30
1	A	196	ASP	CB-CG-OD2	5.16	122.94	118.30
1	A	26	ASP	CB-CG-OD1	5.11	122.90	118.30
1	A	253	MET	CG-SD-CE	-5.08	92.08	100.20
1	A	32	ARG	NE-CZ-NH2	-5.02	117.79	120.30

There are no chirality outliers.

All (3) planarity outliers are listed below:

Mol	Chain	Res	Type	Group
1	A	23	GLY	Peptide
1	A	24	GLU	Peptide
1	A	276	THR	Peptide

5.2 Too-close contacts

In the following table, the Non-H and H(model) columns list the number of non-hydrogen atoms and hydrogen atoms in the chain respectively. The H(added) column lists the number of hydrogen atoms added and optimized by MolProbity. The Clashes column lists the number of clashes within the asymmetric unit, whereas Symm-Clashes lists symmetry related clashes.

Mol	Chain	Non-H	H(model)	H(added)	Clashes	Symm-Clashes
1	A	2951	0	2786	40	0
2	A	51	0	34	10	0
3	A	6	0	3	12	0
4	A	1	0	0	0	0
5	A	3	0	0	0	0
6	A	4	0	0	0	0
7	A	5	0	0	0	0
8	A	176	0	0	6	0
All	All	3197	0	2823	50	0

The all-atom clashscore is defined as the number of clashes found per 1000 atoms (including hydrogen atoms). The all-atom clashscore for this structure is 9.

All (50) close contacts within the same asymmetric unit are listed below, sorted by their clash magnitude.

Atom-1	Atom-2	Interatomic distance (Å)	Clash overlap (Å)
1:A:195[B]:LYS:HD2	8:A:536:HOH:O	1.53	1.06
2:A:434:ACO:HH33	3:A:435:PYR:H33	1.43	1.01
2:A:434:ACO:CH3	3:A:435:PYR:C2	2.46	0.93
1:A:277:GLY:HA3	1:A:278:SER:HB2	1.49	0.92
2:A:434:ACO:HH33	3:A:435:PYR:C3	2.08	0.84
1:A:110:ARG:HG2	1:A:110:ARG:HH11	1.43	0.81
2:A:434:ACO:HH31	3:A:435:PYR:C2	2.11	0.79
2:A:434:ACO:HH31	3:A:435:PYR:C1	2.17	0.74
2:A:434:ACO:HH33	3:A:435:PYR:C2	2.16	0.72
2:A:434:ACO:CH3	3:A:435:PYR:C1	2.69	0.69

Continued on next page...

Continued from previous page...

Atom-1	Atom-2	Interatomic distance (Å)	Clash overlap (Å)
1:A:67:VAL:O	1:A:71:SER:HB2	1.92	0.69
1:A:277:GLY:HA3	1:A:278:SER:CB	2.22	0.68
1:A:195[A]:LYS:HD3	1:A:393:GLN:HB3	1.75	0.68
2:A:434:ACO:CH3	3:A:435:PYR:H33	2.23	0.68
2:A:434:ACO:CH3	3:A:435:PYR:C3	2.73	0.66
1:A:192:ASP:OD1	1:A:195[A]:LYS:HE3	1.97	0.64
1:A:257:TRP:CH2	3:A:435:PYR:H31	2.34	0.62
1:A:277:GLY:CA	1:A:278:SER:HB2	2.28	0.61
1:A:24:GLU:HG2	1:A:25:ASP:O	2.02	0.60
1:A:21:VAL:HG21	1:A:30:MET:HE3	1.86	0.57
1:A:195[A]:LYS:HD3	1:A:393:GLN:CB	2.34	0.57
1:A:58:MET:CE	1:A:58:MET:HA	2.36	0.55
1:A:21:VAL:HG21	1:A:30:MET:CE	2.36	0.55
1:A:195[A]:LYS:CD	1:A:393:GLN:HB3	2.37	0.55
1:A:25:ASP:CG	1:A:26:ASP:H	2.10	0.54
2:A:434:ACO:HH33	3:A:435:PYR:C1	2.38	0.52
1:A:110:ARG:HH11	1:A:110:ARG:CG	2.19	0.51
1:A:231:PRO:HG3	3:A:435:PYR:H33	1.92	0.51
1:A:110:ARG:HG2	1:A:110:ARG:NH1	2.20	0.50
1:A:426:GLU:O	1:A:430:GLU:HG2	2.12	0.50
1:A:353:PHE:CE1	1:A:388:ASP:HA	2.47	0.50
1:A:195[B]:LYS:HE3	8:A:536:HOH:O	2.12	0.49
1:A:114:GLU:H	1:A:114:GLU:CD	2.17	0.48
1:A:185:LEU:HD23	1:A:226:VAL:HB	1.96	0.48
1:A:58:MET:HE2	1:A:58:MET:HA	1.97	0.46
1:A:13:THR:HG22	1:A:267:ALA:HB3	1.97	0.45
1:A:195[B]:LYS:CD	8:A:536:HOH:O	2.32	0.45
1:A:96:TYR:O	1:A:100:GLN:HG3	2.16	0.45
1:A:357:LYS:HA	1:A:361:ARG:O	2.18	0.44
1:A:169:LEU:O	1:A:173:MET:HG3	2.17	0.44
1:A:195[B]:LYS:CE	8:A:536:HOH:O	2.60	0.43
1:A:334:LEU:HD21	1:A:381:ILE:HB	2.00	0.43
1:A:82:HIS:HA	1:A:118:GLY:O	2.18	0.42
1:A:277:GLY:CA	1:A:278:SER:CB	2.86	0.42
1:A:6:HIS:HB3	8:A:600:HOH:O	2.20	0.42
1:A:110:ARG:NH1	1:A:110:ARG:CG	2.81	0.41
1:A:330:ARG:HG3	1:A:381:ILE:HG22	2.02	0.41
1:A:414:GLU:HB2	8:A:592:HOH:O	2.20	0.40
1:A:107:ASP:HA	1:A:108:PRO:HD3	1.92	0.40
1:A:193:TYR:CE2	1:A:197:MET:HG3	2.56	0.40

There are no symmetry-related clashes.

5.3 Torsion angles [i](#)

5.3.1 Protein backbone [i](#)

In the following table, the Percentiles column shows the percent Ramachandran outliers of the chain as a percentile score with respect to all X-ray entries followed by that with respect to entries of similar resolution.

The Analysed column shows the number of residues for which the backbone conformation was analysed, and the total number of residues.

Mol	Chain	Analysed	Favoured	Allowed	Outliers	Percentiles
1	A	372/433 (86%)	360 (97%)	9 (2%)	3 (1%)	19 9

All (3) Ramachandran outliers are listed below:

Mol	Chain	Res	Type
1	A	25	ASP
1	A	24	GLU
1	A	278	SER

5.3.2 Protein sidechains [i](#)

In the following table, the Percentiles column shows the percent sidechain outliers of the chain as a percentile score with respect to all X-ray entries followed by that with respect to entries of similar resolution.

The Analysed column shows the number of residues for which the sidechain conformation was analysed, and the total number of residues.

Mol	Chain	Analysed	Rotameric	Outliers	Percentiles
1	A	312/353 (88%)	299 (96%)	13 (4%)	30 17

All (13) residues with a non-rotameric sidechain are listed below:

Mol	Chain	Res	Type
1	A	13	THR
1	A	24	GLU
1	A	71	SER
1	A	110	ARG
1	A	275	LYS
1	A	284	ASP
1	A	329	LEU
1	A	332	GLU

Continued on next page...

Continued from previous page...

Mol	Chain	Res	Type
1	A	333	LEU
1	A	344	ASP
1	A	371	THR
1	A	414	GLU
1	A	419	ARG

Some sidechains can be flipped to improve hydrogen bonding and reduce clashes. There are no such sidechains identified.

5.3.3 RNA [i](#)

There are no RNA molecules in this entry.

5.4 Non-standard residues in protein, DNA, RNA chains [i](#)

There are no non-standard protein/DNA/RNA residues in this entry.

5.5 Carbohydrates [i](#)

There are no carbohydrates in this entry.

5.6 Ligand geometry [i](#)

Of 11 ligands modelled in this entry, 8 are monoatomic - leaving 3 for Mogul analysis.

In the following table, the Counts columns list the number of bonds (or angles) for which Mogul statistics could be retrieved, the number of bonds (or angles) that are observed in the model and the number of bonds (or angles) that are defined in the Chemical Component Dictionary. The Link column lists molecule types, if any, to which the group is linked. The Z score for a bond length (or angle) is the number of standard deviations the observed value is removed from the expected value. A bond length (or angle) with $|Z| > 2$ is considered an outlier worth inspection. RMSZ is the root-mean-square of all Z scores of the bond lengths (or angles).

Mol	Type	Chain	Res	Link	Bond lengths			Bond angles		
					Counts	RMSZ	$\# Z > 2$	Counts	RMSZ	$\# Z > 2$
2	ACO	A	434	-	45,53,53	0.96	3 (6%)	56,79,79	1.76	10 (17%)
7	PO4	A	800	-	4,4,4	1.21	0	6,6,6	2.07	3 (50%)
3	PYR	A	435	4	2,5,5	1.84	1 (50%)	2,6,6	0.17	0

In the following table, the Chirals column lists the number of chiral outliers, the number of chiral

centers analysed, the number of these observed in the model and the number defined in the Chemical Component Dictionary. Similar counts are reported in the Torsion and Rings columns. '-' means no outliers of that kind were identified.

Mol	Type	Chain	Res	Link	Chirals	Torsions	Rings
2	ACO	A	434	-	-	3/47/67/67	0/3/3/3
3	PYR	A	435	4	-	0/0/4/4	-

All (4) bond length outliers are listed below:

Mol	Chain	Res	Type	Atoms	Z	Observed(Å)	Ideal(Å)
2	A	434	ACO	P3B-O3B	3.11	1.65	1.59
2	A	434	ACO	C5A-C4A	2.80	1.48	1.40
3	A	435	PYR	O3-C2	2.58	1.30	1.22
2	A	434	ACO	O4B-C1B	2.38	1.44	1.41

All (13) bond angle outliers are listed below:

Mol	Chain	Res	Type	Atoms	Z	Observed(°)	Ideal(°)
2	A	434	ACO	N3A-C2A-N1A	-4.97	120.92	128.68
2	A	434	ACO	C7P-C6P-C5P	-4.31	105.17	112.36
2	A	434	ACO	N6A-C6A-N1A	4.22	127.34	118.57
2	A	434	ACO	O5A-P2A-O4A	4.07	132.34	112.24
2	A	434	ACO	C2A-N1A-C6A	3.16	124.15	118.75
7	A	800	PO4	O4-P-O1	-3.07	99.66	110.89
2	A	434	ACO	P2A-O3A-P1A	-3.05	122.36	132.83
2	A	434	ACO	O3B-P3B-O7A	-2.76	98.75	109.39
2	A	434	ACO	C5A-C6A-N6A	-2.70	116.26	120.35
7	A	800	PO4	O3-P-O2	2.57	116.21	107.97
2	A	434	ACO	O3B-C3B-C2B	-2.51	102.58	111.68
2	A	434	ACO	OAP-CAP-CBP	-2.45	104.49	110.25
7	A	800	PO4	O4-P-O2	-2.25	100.75	107.97

There are no chirality outliers.

All (3) torsion outliers are listed below:

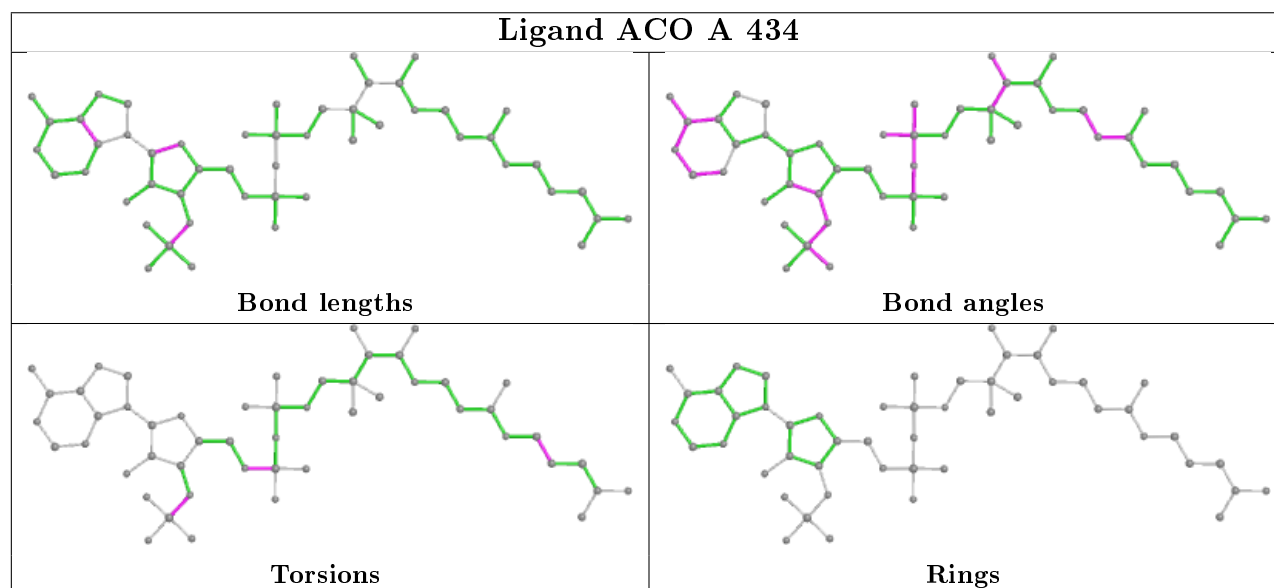
Mol	Chain	Res	Type	Atoms
2	A	434	ACO	C3B-O3B-P3B-O7A
2	A	434	ACO	S1P-C2P-C3P-N4P
2	A	434	ACO	C5B-O5B-P1A-O1A

There are no ring outliers.

2 monomers are involved in 12 short contacts:

Mol	Chain	Res	Type	Clashes	Symm-Clashes
2	A	434	ACO	10	0
3	A	435	PYR	12	0

The following is a two-dimensional graphical depiction of Mogul quality analysis of bond lengths, bond angles, torsion angles, and ring geometry for all instances of the Ligand of Interest. In addition, ligands with molecular weight > 250 and outliers as shown on the validation Tables will also be included. For torsion angles, if less than 5% of the Mogul distribution of torsion angles is within 10 degrees of the torsion angle in question, then that torsion angle is considered an outlier. Any bond that is central to one or more torsion angles identified as an outlier by Mogul will be highlighted in the graph. For rings, the root-mean-square deviation (RMSD) between the ring in question and similar rings identified by Mogul is calculated over all ring torsion angles. If the average RMSD is greater than 60 degrees and the minimal RMSD between the ring in question and any Mogul-identified rings is also greater than 60 degrees, then that ring is considered an outlier. The outliers are highlighted in purple. The color gray indicates Mogul did not find sufficient equivalents in the CSD to analyse the geometry.



5.7 Other polymers [i](#)

There are no such residues in this entry.

5.8 Polymer linkage issues [i](#)

There are no chain breaks in this entry.

6 Fit of model and data ⓘ

6.1 Protein, DNA and RNA chains ⓘ

In the following table, the column labelled ‘#RSRZ> 2’ contains the number (and percentage) of RSRZ outliers, followed by percent RSRZ outliers for the chain as percentile scores relative to all X-ray entries and entries of similar resolution. The OWAB column contains the minimum, median, 95th percentile and maximum values of the occupancy-weighted average B-factor per residue. The column labelled ‘Q< 0.9’ lists the number of (and percentage) of residues with an average occupancy less than 0.9.

Mol	Chain	Analysed	<RSRZ>	#RSRZ>2	OWAB(Å ²)	Q<0.9
1	A	376/433 (86%)	0.42	45 (11%) 4 7	26, 43, 78, 103	0

All (45) RSRZ outliers are listed below:

Mol	Chain	Res	Type	RSRZ
1	A	329	LEU	8.4
1	A	283	ALA	6.1
1	A	284	ASP	5.6
1	A	23	GLY	5.2
1	A	282	ASP	4.7
1	A	331	GLU	4.6
1	A	25	ASP	4.5
1	A	332	GLU	4.3
1	A	7	ASP	4.1
1	A	381	ILE	4.0
1	A	336	LEU	4.0
1	A	333	LEU	3.7
1	A	281	LEU	3.6
1	A	382	GLU	3.6
1	A	424	VAL	3.5
1	A	24	GLU	3.4
1	A	432	GLY	3.2
1	A	276	THR	3.2
1	A	358	GLU	3.0
1	A	47	VAL	3.0
1	A	370	ALA	3.0
1	A	363	ALA	2.9
1	A	11	VAL	2.8
1	A	371	THR	2.8
1	A	359	ALA	2.7
1	A	418	GLU	2.6
1	A	414	GLU	2.6

Continued on next page...

Continued from previous page...

Mol	Chain	Res	Type	RSRZ
1	A	120	VAL	2.5
1	A	22	GLU	2.4
1	A	355	ALA	2.4
1	A	45	VAL	2.4
1	A	356	ALA	2.3
1	A	109	GLU	2.3
1	A	119	PHE	2.2
1	A	330	ARG	2.2
1	A	186	LEU	2.2
1	A	417	GLU	2.2
1	A	423	GLY	2.1
1	A	121	ILE	2.1
1	A	369	SER	2.1
1	A	348	ASP	2.1
1	A	5	ARG	2.0
1	A	353	PHE	2.0
1	A	6	HIS	2.0
1	A	154	SER	2.0

6.2 Non-standard residues in protein, DNA, RNA chains [i](#)

There are no non-standard protein/DNA/RNA residues in this entry.

6.3 Carbohydrates [i](#)

There are no carbohydrates in this entry.

6.4 Ligands [i](#)

In the following table, the Atoms column lists the number of modelled atoms in the group and the number defined in the chemical component dictionary. The B-factors column lists the minimum, median, 95th percentile and maximum values of B factors of atoms in the group. The column labelled 'Q< 0.9' lists the number of atoms with occupancy less than 0.9.

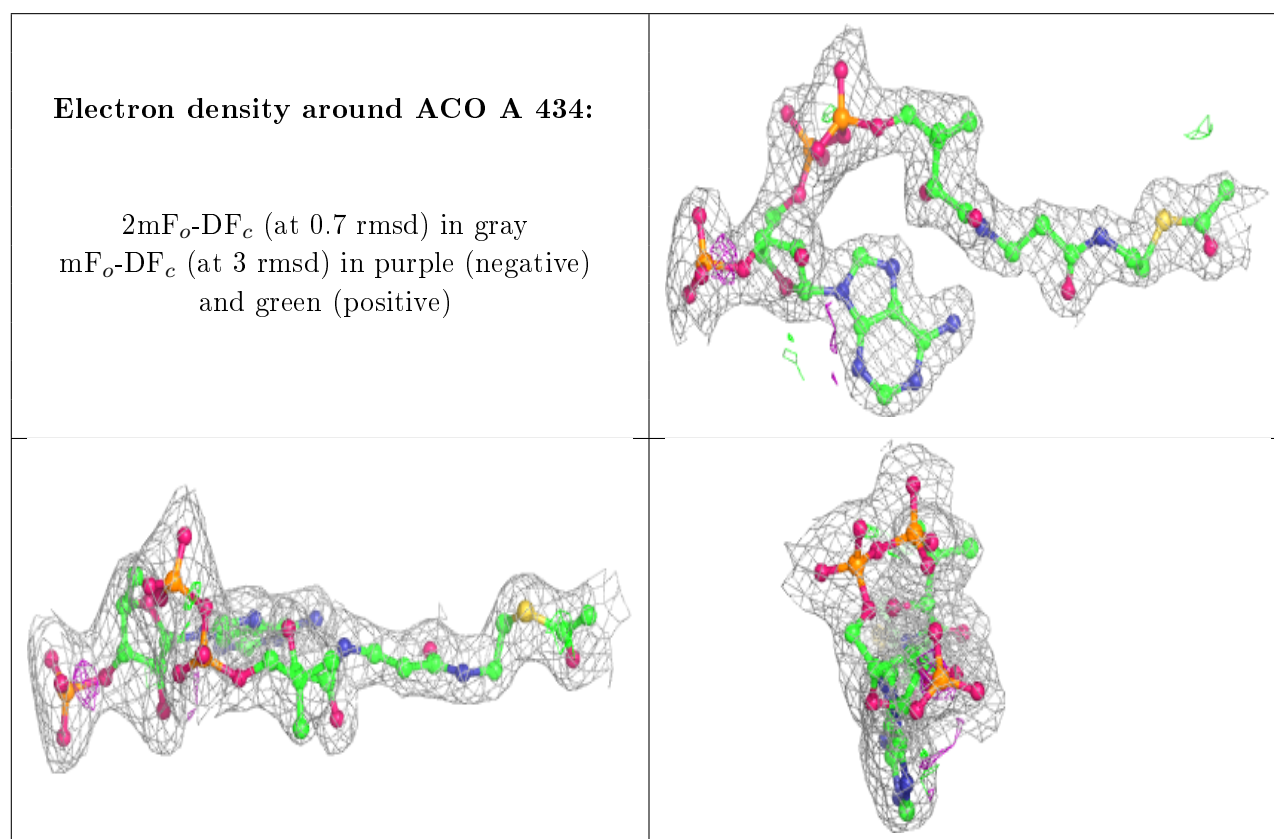
Mol	Type	Chain	Res	Atoms	RSCC	RSR	B-factors(Å ²)	Q<0.9
2	ACO	A	434	51/51	0.94	0.09	41,52,63,68	0
5	K	A	603	1/1	0.96	0.08	51,51,51,51	0
6	CL	A	704	1/1	0.98	0.06	47,47,47,47	0
7	PO4	A	800	5/5	0.99	0.10	33,33,37,39	5
6	CL	A	702	1/1	0.99	0.04	37,37,37,37	0

Continued on next page...

Continued from previous page...

Mol	Type	Chain	Res	Atoms	RSCC	RSR	B-factors(\AA^2)	Q<0.9
5	K	A	602	1/1	0.99	0.06	37,37,37,37	0
6	CL	A	701	1/1	0.99	0.06	45,45,45,45	0
3	PYR	A	435	6/6	0.99	0.08	34,39,48,49	0
4	MG	A	500	1/1	0.99	0.06	32,32,32,32	0
5	K	A	601	1/1	1.00	0.06	33,33,33,33	0
6	CL	A	705	1/1	1.00	0.08	34,34,34,34	0

The following is a graphical depiction of the model fit to experimental electron density of all instances of the Ligand of Interest. In addition, ligands with molecular weight > 250 and outliers as shown on the geometry validation Tables will also be included. Each fit is shown from different orientation to approximate a three-dimensional view.



6.5 Other polymers ⓘ

There are no such residues in this entry.