



Full wwPDB X-ray Structure Validation Report ⓘ

May 22, 2020 – 02:18 pm BST

PDB ID : 2P0C
Title : Catalytic Domain of the Proto-oncogene Tyrosine-protein Kinase MER
Authors : Walker, J.R.; Huang, X.; Finerty Jr., P.J.; Weigelt, J.; Sundstrom, M.; Arrowsmith, C.H.; Edwards, A.M.; Bochkarev, A.; Dhe-Paganon, S.; Structural Genomics Consortium (SGC)
Deposited on : 2007-02-28
Resolution : 2.40 Å(reported)

This is a Full wwPDB X-ray Structure Validation Report for a publicly released PDB entry.

We welcome your comments at validation@mail.wwpdb.org

A user guide is available at

<https://www.wwpdb.org/validation/2017/XrayValidationReportHelp>

with specific help available everywhere you see the ⓘ symbol.

The following versions of software and data (see [references ⓘ](#)) were used in the production of this report:

MolProbity	:	4.02b-467
Mogul	:	1.8.5 (274361), CSD as541be (2020)
Xtriage (Phenix)	:	1.13
EDS	:	2.11
buster-report	:	1.1.7 (2018)
Percentile statistics	:	20191225.v01 (using entries in the PDB archive December 25th 2019)
Refmac	:	5.8.0158
CCP4	:	7.0.044 (Gargrove)
Ideal geometry (proteins)	:	Engh & Huber (2001)
Ideal geometry (DNA, RNA)	:	Parkinson et al. (1996)
Validation Pipeline (wwPDB-VP)	:	2.11

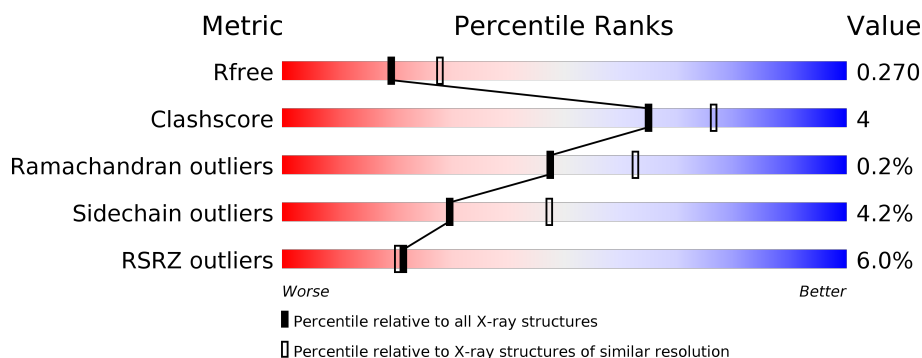
1 Overall quality at a glance

The following experimental techniques were used to determine the structure:

X-RAY DIFFRACTION

The reported resolution of this entry is 2.40 Å.

Percentile scores (ranging between 0-100) for global validation metrics of the entry are shown in the following graphic. The table shows the number of entries on which the scores are based.



Metric	Whole archive (#Entries)	Similar resolution (#Entries, resolution range(Å))
R_{free}	130704	3907 (2.40-2.40)
Clashscore	141614	4398 (2.40-2.40)
Ramachandran outliers	138981	4318 (2.40-2.40)
Sidechain outliers	138945	4319 (2.40-2.40)
RSRZ outliers	127900	3811 (2.40-2.40)

The table below summarises the geometric issues observed across the polymeric chains and their fit to the electron density. The red, orange, yellow and green segments on the lower bar indicate the fraction of residues that contain outliers for ≥ 3 , 2, 1 and 0 types of geometric quality criteria respectively. A grey segment represents the fraction of residues that are not modelled. The numeric value for each fraction is indicated below the corresponding segment, with a dot representing fractions $\leq 5\%$. The upper red bar (where present) indicates the fraction of residues that have poor fit to the electron density. The numeric value is given above the bar.

Mol	Chain	Length	Quality of chain
1	A	313	<div> <div>3%</div> <div> <div></div> <div>71%</div> <div>8%</div> <div>20%</div> </div> </div>
1	B	313	<div> <div>7%</div> <div> <div></div> <div>72%</div> <div>6%</div> <div>21%</div> </div> </div>

2 Entry composition

There are 5 unique types of molecules in this entry. The entry contains 4186 atoms, of which 0 are hydrogens and 0 are deuteriums.

In the tables below, the ZeroOcc column contains the number of atoms modelled with zero occupancy, the AltConf column contains the number of residues with at least one atom in alternate conformation and the Trace column contains the number of residues modelled with at most 2 atoms.

- Molecule 1 is a protein called Proto-oncogene tyrosine-protein kinase MER.

Mol	Chain	Residues	Atoms					ZeroOcc	AltConf	Trace
1	A	249	Total	C	N	O	S	0	1	0
			1983	1276	328	360	19			
1	B	248	Total	C	N	O	S	0	1	0
			1970	1267	324	359	20			

There are 40 discrepancies between the modelled and reference sequences:

Chain	Residue	Modelled	Actual	Comment	Reference
A	552	MET	-	CLONING ARTIFACT	UNP Q12866
A	553	GLY	-	CLONING ARTIFACT	UNP Q12866
A	554	SER	-	CLONING ARTIFACT	UNP Q12866
A	555	SER	-	CLONING ARTIFACT	UNP Q12866
A	556	HIS	-	CLONING ARTIFACT	UNP Q12866
A	557	HIS	-	CLONING ARTIFACT	UNP Q12866
A	558	HIS	-	CLONING ARTIFACT	UNP Q12866
A	559	HIS	-	CLONING ARTIFACT	UNP Q12866
A	560	HIS	-	CLONING ARTIFACT	UNP Q12866
A	561	HIS	-	CLONING ARTIFACT	UNP Q12866
A	562	SER	-	CLONING ARTIFACT	UNP Q12866
A	563	SER	-	CLONING ARTIFACT	UNP Q12866
A	564	GLY	-	CLONING ARTIFACT	UNP Q12866
A	565	LEU	-	CLONING ARTIFACT	UNP Q12866
A	566	VAL	-	CLONING ARTIFACT	UNP Q12866
A	567	PRO	-	CLONING ARTIFACT	UNP Q12866
A	568	ARG	-	CLONING ARTIFACT	UNP Q12866
A	569	GLY	-	CLONING ARTIFACT	UNP Q12866
A	628	GLN	HIS	CONFLICT	UNP Q12866
A	794	ALA	ARG	CONFLICT	UNP Q12866
B	552	MET	-	CLONING ARTIFACT	UNP Q12866
B	553	GLY	-	CLONING ARTIFACT	UNP Q12866
B	554	SER	-	CLONING ARTIFACT	UNP Q12866
B	555	SER	-	CLONING ARTIFACT	UNP Q12866
B	556	HIS	-	CLONING ARTIFACT	UNP Q12866

Continued on next page...

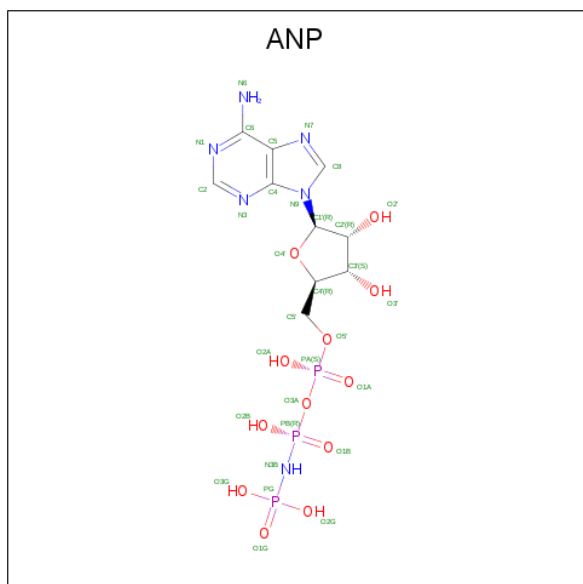
Continued from previous page...

Chain	Residue	Modelled	Actual	Comment	Reference
B	557	HIS	-	CLONING ARTIFACT	UNP Q12866
B	558	HIS	-	CLONING ARTIFACT	UNP Q12866
B	559	HIS	-	CLONING ARTIFACT	UNP Q12866
B	560	HIS	-	CLONING ARTIFACT	UNP Q12866
B	561	HIS	-	CLONING ARTIFACT	UNP Q12866
B	562	SER	-	CLONING ARTIFACT	UNP Q12866
B	563	SER	-	CLONING ARTIFACT	UNP Q12866
B	564	GLY	-	CLONING ARTIFACT	UNP Q12866
B	565	LEU	-	CLONING ARTIFACT	UNP Q12866
B	566	VAL	-	CLONING ARTIFACT	UNP Q12866
B	567	PRO	-	CLONING ARTIFACT	UNP Q12866
B	568	ARG	-	CLONING ARTIFACT	UNP Q12866
B	569	GLY	-	CLONING ARTIFACT	UNP Q12866
B	628	GLN	HIS	CONFLICT	UNP Q12866
B	794	ALA	ARG	CONFLICT	UNP Q12866

- Molecule 2 is MAGNESIUM ION (three-letter code: MG) (formula: Mg).

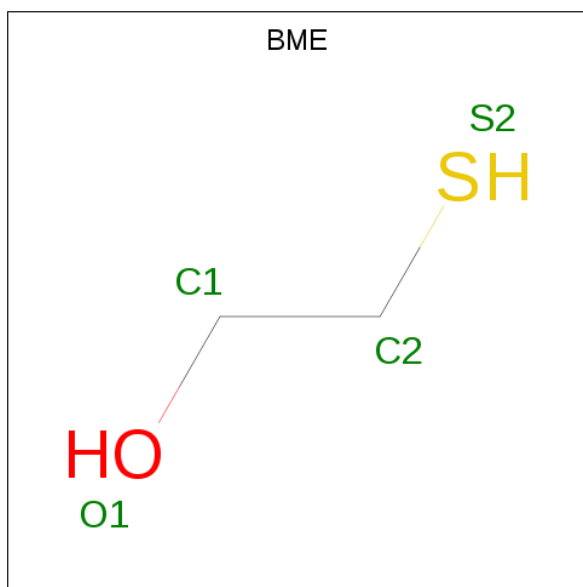
Mol	Chain	Residues	Atoms	ZeroOcc	AltConf
2	B	2	Total Mg 2 2	0	0
2	A	1	Total Mg 1 1	0	0

- Molecule 3 is PHOSPHOAMINOPHOSPHONIC ACID-ADENYLATE ESTER (three-letter code: ANP) (formula: C₁₀H₁₇N₆O₁₂P₃).



Mol	Chain	Residues	Atoms					ZeroOcc	AltConf
3	A	1	Total	C	N	O	P	0	0
			31	10	6	12	3		
3	B	1	Total	C	N	O	P	0	0
			31	10	6	12	3		

- Molecule 4 is BETA-MERCAPTOETHANOL (three-letter code: BME) (formula: C₂H₆OS).



Mol	Chain	Residues	Atoms				ZeroOcc	AltConf
4	A	1	Total	C	O	S	0	0
			4	2	1	1		

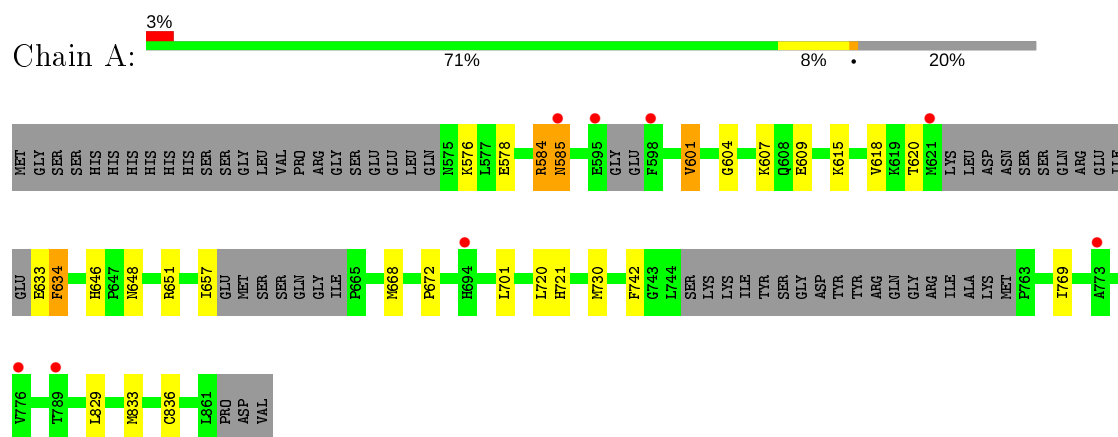
- Molecule 5 is water.

Mol	Chain	Residues	Atoms		ZeroOcc	AltConf
5	A	79	Total	O	0	0
			79	79		
5	B	85	Total	O	0	0
			85	85		

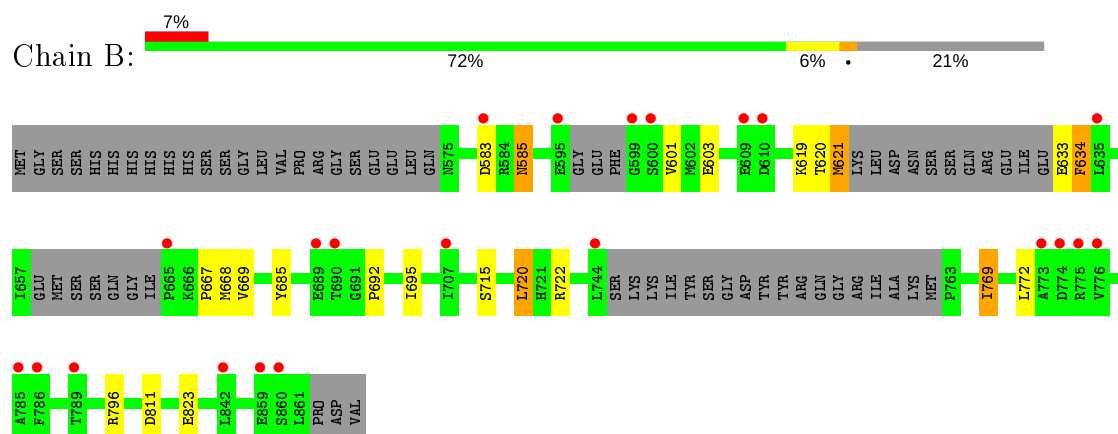
3 Residue-property plots [i](#)

These plots are drawn for all protein, RNA and DNA chains in the entry. The first graphic for a chain summarises the proportions of the various outlier classes displayed in the second graphic. The second graphic shows the sequence view annotated by issues in geometry and electron density. Residues are color-coded according to the number of geometric quality criteria for which they contain at least one outlier: green = 0, yellow = 1, orange = 2 and red = 3 or more. A red dot above a residue indicates a poor fit to the electron density ($RSRZ > 2$). Stretches of 2 or more consecutive residues without any outlier are shown as a green connector. Residues present in the sample, but not in the model, are shown in grey.

- Molecule 1: Proto-oncogene tyrosine-protein kinase MER



- Molecule 1: Proto-oncogene tyrosine-protein kinase MER



4 Data and refinement statistics

Property	Value	Source
Space group	P 1 21 1	Depositor
Cell constants a, b, c, α , β , γ	52.47Å 90.06Å 69.25Å 90.00° 102.44° 90.00°	Depositor
Resolution (Å)	24.79 – 2.40 24.79 – 2.40	Depositor EDS
% Data completeness (in resolution range)	99.5 (24.79-2.40) 99.5 (24.79-2.40)	Depositor EDS
R_{merge}	(Not available)	Depositor
R_{sym}	0.07	Depositor
$\langle I/\sigma(I) \rangle$ ¹	5.37 (at 2.41Å)	Xtriage
Refinement program	REFMAC 5.2.0019	Depositor
R, R_{free}	0.204 , 0.274 0.204 , 0.270	Depositor DCC
R_{free} test set	1232 reflections (5.02%)	wwPDB-VP
Wilson B-factor (Å ²)	40.7	Xtriage
Anisotropy	0.131	Xtriage
Bulk solvent k_{sol} (e/Å ³), B_{sol} (Å ²)	0.34 , 61.6	EDS
L-test for twinning ²	$\langle L \rangle = 0.50$, $\langle L^2 \rangle = 0.33$	Xtriage
Estimated twinning fraction	No twinning to report.	Xtriage
F_o, F_c correlation	0.94	EDS
Total number of atoms	4186	wwPDB-VP
Average B, all atoms (Å ²)	53.0	wwPDB-VP

Xtriage's analysis on translational NCS is as follows: *The largest off-origin peak in the Patterson function is 5.91% of the height of the origin peak. No significant pseudotranslation is detected.*

¹Intensities estimated from amplitudes.

²Theoretical values of $\langle |L| \rangle$, $\langle L^2 \rangle$ for acentric reflections are 0.5, 0.333 respectively for untwinned datasets, and 0.375, 0.2 for perfectly twinned datasets.

5 Model quality

5.1 Standard geometry

Bond lengths and bond angles in the following residue types are not validated in this section: MG, ANP, BME

The Z score for a bond length (or angle) is the number of standard deviations the observed value is removed from the expected value. A bond length (or angle) with $|Z| > 5$ is considered an outlier worth inspection. RMSZ is the root-mean-square of all Z scores of the bond lengths (or angles).

Mol	Chain	Bond lengths		Bond angles	
		RMSZ	$\# Z > 5$	RMSZ	$\# Z > 5$
1	A	0.44	0/2024	0.57	0/2737
1	B	0.43	0/2009	0.56	0/2715
All	All	0.43	0/4033	0.56	0/5452

There are no bond length outliers.

There are no bond angle outliers.

There are no chirality outliers.

There are no planarity outliers.

5.2 Too-close contacts

In the following table, the Non-H and H(model) columns list the number of non-hydrogen atoms and hydrogen atoms in the chain respectively. The H(added) column lists the number of hydrogen atoms added and optimized by MolProbity. The Clashes column lists the number of clashes within the asymmetric unit, whereas Symm-Clashes lists symmetry related clashes.

Mol	Chain	Non-H	H(model)	H(added)	Clashes	Symm-Clashes
1	A	1983	0	1959	18	0
1	B	1970	0	1950	15	0
2	A	1	0	0	0	0
2	B	2	0	0	0	0
3	A	31	0	12	3	0
3	B	31	0	13	3	0
4	A	4	0	5	0	0
5	A	79	0	0	1	0
5	B	85	0	0	0	0
All	All	4186	0	3939	33	0

The all-atom clashscore is defined as the number of clashes found per 1000 atoms (including

hydrogen atoms). The all-atom clashscore for this structure is 4.

All (33) close contacts within the same asymmetric unit are listed below, sorted by their clash magnitude.

Atom-1	Atom-2	Interatomic distance (Å)	Clash overlap (Å)
1:B:633:GLU:HB2	1:B:634:PHE:HA	1.40	1.01
1:B:601:VAL:HG11	3:B:2:ANP:H5'1	1.63	0.80
1:A:620:THR:HG22	1:A:668:MET:HG2	1.69	0.74
1:A:633:GLU:HB3	1:A:634:PHE:HA	1.75	0.66
1:B:601:VAL:CG1	3:B:2:ANP:H5'1	2.28	0.64
1:A:646:HIS:HD2	1:A:648:ASN:H	1.48	0.61
1:B:620:THR:HG22	1:B:668:MET:HG2	1.83	0.60
1:A:646:HIS:CD2	1:A:648:ASN:H	2.20	0.59
1:B:619:LYS:HB3	1:B:669:VAL:HG22	1.85	0.57
1:A:601:VAL:HG11	3:A:1:ANP:H5'1	1.87	0.56
1:B:695:ILE:O	1:B:796:ARG:NH2	2.42	0.49
1:A:701:LEU:HD21	1:A:829:LEU:HD13	1.93	0.49
1:B:583:ASP:OD2	1:B:585:ASN:ND2	2.46	0.49
1:A:604:GLY:O	1:A:615:LYS:HD2	2.12	0.49
1:B:621[B]:MET:HG3	1:B:667:PRO:HG2	1.95	0.47
1:A:601:VAL:CG1	3:A:1:ANP:H5'1	2.44	0.47
1:B:633:GLU:CB	1:B:634:PHE:HA	2.24	0.47
1:B:601:VAL:HG11	3:B:2:ANP:C5'	2.41	0.47
1:A:585:ASN:C	1:A:585:ASN:HD22	2.16	0.46
1:B:769:ILE:H	1:B:769:ILE:HG13	1.58	0.46
1:A:721:HIS:CD2	1:A:742:PHE:HB3	2.51	0.46
1:B:633:GLU:HB2	1:B:634:PHE:CA	2.29	0.44
1:B:685:TYR:HB3	1:B:692:PRO:HD2	2.00	0.44
1:A:730:MET:HE3	5:A:121:HOH:O	2.17	0.44
1:A:576:LYS:C	1:A:578:GLU:H	2.22	0.43
1:A:601:VAL:HA	1:A:618:VAL:O	2.18	0.43
1:B:720:LEU:HD23	1:B:722:ARG:NH1	2.34	0.43
1:A:584:ARG:HD2	1:A:584:ARG:O	2.20	0.42
1:A:651:ARG:O	1:A:672:PRO:HD3	2.20	0.42
1:B:620:THR:C	1:B:621[A]:MET:HG2	2.40	0.41
1:A:601:VAL:HG11	3:A:1:ANP:C5'	2.50	0.41
1:A:833:MET:O	1:A:836:CYS:HB2	2.21	0.40
1:A:615:LYS:HD2	1:A:615:LYS:HA	1.91	0.40

There are no symmetry-related clashes.

5.3 Torsion angles [i](#)

5.3.1 Protein backbone [i](#)

In the following table, the Percentiles column shows the percent Ramachandran outliers of the chain as a percentile score with respect to all X-ray entries followed by that with respect to entries of similar resolution.

The Analysed column shows the number of residues for which the backbone conformation was analysed, and the total number of residues.

Mol	Chain	Analysed	Favoured	Allowed	Outliers	Percentiles	
1	A	240/313 (77%)	234 (98%)	6 (2%)	0	100	100
1	B	238/313 (76%)	231 (97%)	6 (2%)	1 (0%)	34	48
All	All	478/626 (76%)	465 (97%)	12 (2%)	1 (0%)	47	62

All (1) Ramachandran outliers are listed below:

Mol	Chain	Res	Type
1	B	823	GLU

5.3.2 Protein sidechains [i](#)

In the following table, the Percentiles column shows the percent sidechain outliers of the chain as a percentile score with respect to all X-ray entries followed by that with respect to entries of similar resolution.

The Analysed column shows the number of residues for which the sidechain conformation was analysed, and the total number of residues.

Mol	Chain	Analysed	Rotameric	Outliers	Percentiles	
1	A	216/280 (77%)	207 (96%)	9 (4%)	30	47
1	B	215/280 (77%)	205 (95%)	10 (5%)	26	42
All	All	431/560 (77%)	412 (96%)	19 (4%)	30	45

All (19) residues with a non-rotameric sidechain are listed below:

Mol	Chain	Res	Type
1	A	584	ARG
1	A	585	ASN
1	A	601	VAL
1	A	607	LYS
1	A	609	GLU

Continued on next page...

Continued from previous page...

Mol	Chain	Res	Type
1	A	634	PHE
1	A	657	ILE
1	A	720	LEU
1	A	769	ILE
1	B	585	ASN
1	B	603	GLU
1	B	621[A]	MET
1	B	621[B]	MET
1	B	634	PHE
1	B	715	SER
1	B	720	LEU
1	B	769	ILE
1	B	772	LEU
1	B	811	ASP

Some sidechains can be flipped to improve hydrogen bonding and reduce clashes. All (3) such sidechains are listed below:

Mol	Chain	Res	Type
1	A	585	ASN
1	A	646	HIS
1	B	585	ASN

5.3.3 RNA ⓘ

There are no RNA molecules in this entry.

5.4 Non-standard residues in protein, DNA, RNA chains ⓘ

There are no non-standard protein/DNA/RNA residues in this entry.

5.5 Carbohydrates ⓘ

There are no carbohydrates in this entry.

5.6 Ligand geometry ⓘ

Of 6 ligands modelled in this entry, 3 are monoatomic - leaving 3 for Mogul analysis.

In the following table, the Counts columns list the number of bonds (or angles) for which Mogul statistics could be retrieved, the number of bonds (or angles) that are observed in the model and the number of bonds (or angles) that are defined in the Chemical Component Dictionary. The Link column lists molecule types, if any, to which the group is linked. The Z score for a bond length (or angle) is the number of standard deviations the observed value is removed from the expected value. A bond length (or angle) with $|Z| > 2$ is considered an outlier worth inspection. RMSZ is the root-mean-square of all Z scores of the bond lengths (or angles).

Mol	Type	Chain	Res	Link	Bond lengths			Bond angles		
					Counts	RMSZ	$\# Z > 2$	Counts	RMSZ	$\# Z > 2$
3	ANP	A	1	2	29,33,33	1.93	6 (20%)	31,52,52	1.81	8 (25%)
4	BME	A	3	1	3,3,3	0.23	0	1,2,2	0.50	0
3	ANP	B	2	2	29,33,33	1.77	6 (20%)	31,52,52	1.95	9 (29%)

In the following table, the Chirals column lists the number of chiral outliers, the number of chiral centers analysed, the number of these observed in the model and the number defined in the Chemical Component Dictionary. Similar counts are reported in the Torsion and Rings columns. '-' means no outliers of that kind were identified.

Mol	Type	Chain	Res	Link	Chirals	Torsions	Rings
3	ANP	A	1	2	-	5/14/38/38	0/3/3/3
4	BME	A	3	1	-	0/1/1/1	-
3	ANP	B	2	2	-	3/14/38/38	0/3/3/3

All (12) bond length outliers are listed below:

Mol	Chain	Res	Type	Atoms	Z	Observed(Å)	Ideal(Å)
3	A	1	ANP	PG-N3B	5.28	1.77	1.63
3	A	1	ANP	PB-N3B	4.54	1.75	1.63
3	B	2	ANP	PG-N3B	4.49	1.75	1.63
3	B	2	ANP	PB-N3B	4.07	1.74	1.63
3	A	1	ANP	PG-O1G	3.66	1.52	1.46
3	B	2	ANP	PG-O1G	3.40	1.51	1.46
3	A	1	ANP	PB-O1B	3.11	1.51	1.46
3	B	2	ANP	PB-O1B	2.88	1.50	1.46
3	B	2	ANP	C5-C4	2.76	1.48	1.40
3	A	1	ANP	C5-C4	2.50	1.47	1.40
3	B	2	ANP	PB-O2B	-2.49	1.50	1.56
3	A	1	ANP	PB-O2B	-2.05	1.51	1.56

All (17) bond angle outliers are listed below:

Mol	Chain	Res	Type	Atoms	Z	Observed(°)	Ideal(°)
3	B	2	ANP	O1G-PG-N3B	-5.22	104.08	111.77
3	A	1	ANP	O1G-PG-N3B	-5.14	104.20	111.77
3	B	2	ANP	O2B-PB-O1B	4.43	119.20	109.92
3	A	1	ANP	N3-C2-N1	-3.82	122.70	128.68
3	B	2	ANP	N3-C2-N1	-3.73	122.84	128.68
3	A	1	ANP	O2B-PB-O1B	3.64	117.55	109.92
3	B	2	ANP	O1B-PB-N3B	-3.20	107.06	111.77
3	B	2	ANP	PA-O3A-PB	-2.71	123.06	132.62
3	B	2	ANP	C4-C5-N7	-2.66	106.62	109.40
3	A	1	ANP	O3G-PG-O2G	2.65	114.70	107.64
3	B	2	ANP	C2-N1-C6	2.47	122.97	118.75
3	A	1	ANP	C4-C5-N7	-2.42	106.88	109.40
3	A	1	ANP	C2-N1-C6	2.37	122.81	118.75
3	B	2	ANP	O3G-PG-O2G	2.28	113.72	107.64
3	A	1	ANP	O1B-PB-N3B	-2.21	108.52	111.77
3	B	2	ANP	O2A-PA-O1A	2.06	122.42	112.24
3	A	1	ANP	O4'-C1'-C2'	-2.03	103.96	106.93

There are no chirality outliers.

All (8) torsion outliers are listed below:

Mol	Chain	Res	Type	Atoms
3	A	1	ANP	PB-N3B-PG-O1G
3	A	1	ANP	PG-N3B-PB-O3A
3	A	1	ANP	PA-O3A-PB-O2B
3	B	2	ANP	PB-N3B-PG-O1G
3	A	1	ANP	C5'-O5'-PA-O3A
3	B	2	ANP	PA-O3A-PB-O2B
3	A	1	ANP	PB-O3A-PA-O2A
3	B	2	ANP	C5'-O5'-PA-O3A

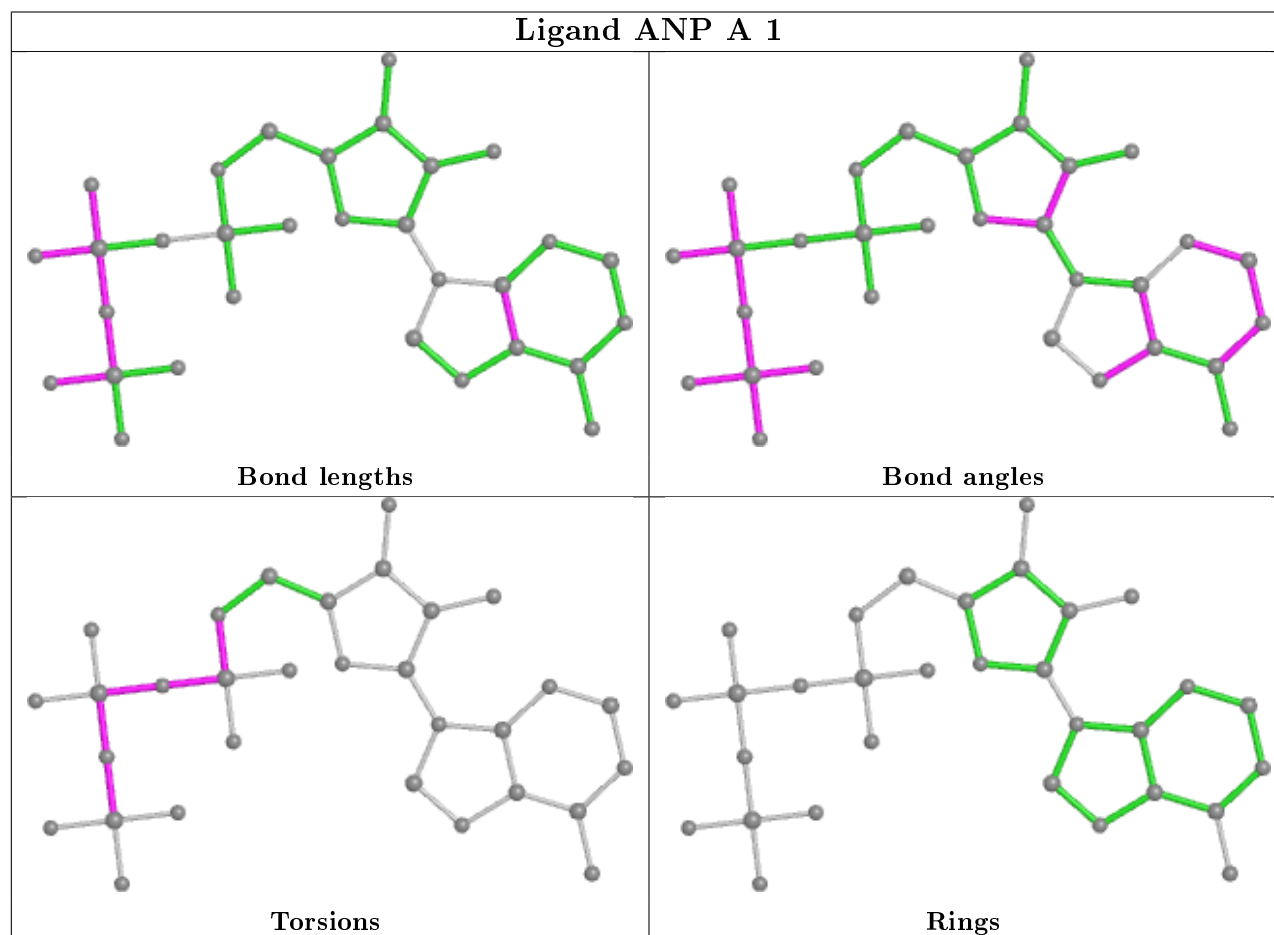
There are no ring outliers.

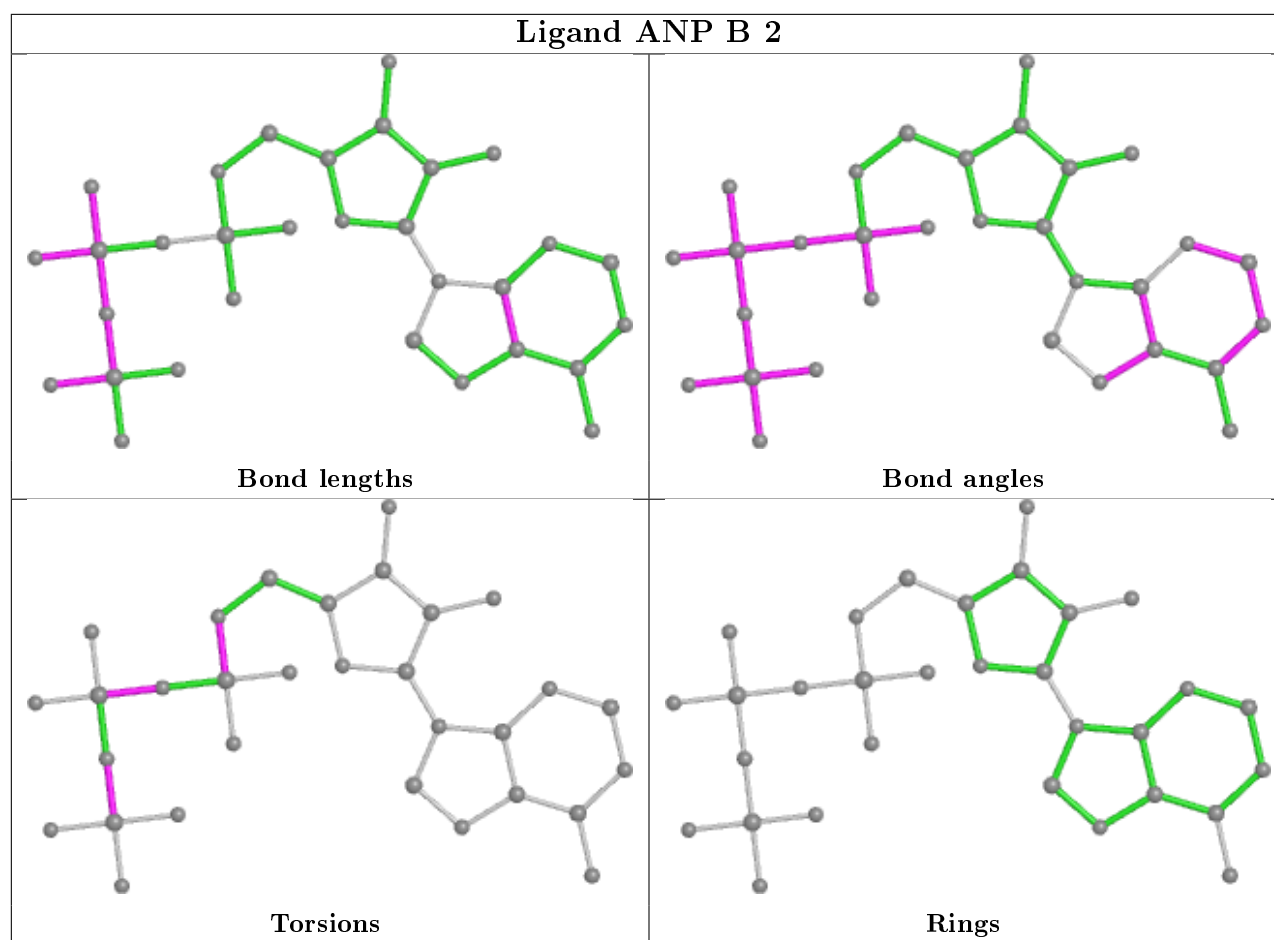
2 monomers are involved in 6 short contacts:

Mol	Chain	Res	Type	Clashes	Symm-Clashes
3	A	1	ANP	3	0
3	B	2	ANP	3	0

The following is a two-dimensional graphical depiction of Mogul quality analysis of bond lengths, bond angles, torsion angles, and ring geometry for all instances of the Ligand of Interest. In addition, ligands with molecular weight > 250 and outliers as shown on the validation Tables will also be included. For torsion angles, if less than 5% of the Mogul distribution of torsion angles is

within 10 degrees of the torsion angle in question, then that torsion angle is considered an outlier. Any bond that is central to one or more torsion angles identified as an outlier by Mogul will be highlighted in the graph. For rings, the root-mean-square deviation (RMSD) between the ring in question and similar rings identified by Mogul is calculated over all ring torsion angles. If the average RMSD is greater than 60 degrees and the minimal RMSD between the ring in question and any Mogul-identified rings is also greater than 60 degrees, then that ring is considered an outlier. The outliers are highlighted in purple. The color gray indicates Mogul did not find sufficient equivalents in the CSD to analyse the geometry.





5.7 Other polymers [i](#)

There are no such residues in this entry.

5.8 Polymer linkage issues [i](#)

There are no chain breaks in this entry.

6 Fit of model and data

6.1 Protein, DNA and RNA chains

In the following table, the column labelled ‘#RSRZ> 2’ contains the number (and percentage) of RSRZ outliers, followed by percent RSRZ outliers for the chain as percentile scores relative to all X-ray entries and entries of similar resolution. The OWAB column contains the minimum, median, 95th percentile and maximum values of the occupancy-weighted average B-factor per residue. The column labelled ‘Q< 0.9’ lists the number of (and percentage) of residues with an average occupancy less than 0.9.

Mol	Chain	Analysed	<RSRZ>	#RSRZ>2	OWAB(Å ²)	Q<0.9
1	A	249/313 (79%)	0.22	8 (3%) 47 46	34, 51, 87, 209	0
1	B	248/313 (79%)	0.29	22 (8%) 9 9	32, 49, 79, 120	0
All	All	497/626 (79%)	0.25	30 (6%) 21 20	32, 50, 84, 209	0

All (30) RSRZ outliers are listed below:

Mol	Chain	Res	Type	RSRZ
1	A	598	PHE	5.0
1	B	599	GLY	4.7
1	B	773	ALA	4.4
1	B	665	PRO	3.8
1	B	776	VAL	3.7
1	A	585	ASN	3.6
1	B	775	ARG	3.5
1	A	694	HIS	3.1
1	A	776	VAL	3.1
1	B	690	THR	2.9
1	B	786	PHE	2.8
1	B	635	LEU	2.7
1	A	621	MET	2.7
1	B	609	GLU	2.6
1	B	600	SER	2.6
1	B	860	SER	2.6
1	B	842	LEU	2.4
1	B	859	GLU	2.4
1	B	595	GLU	2.3
1	B	789	THR	2.3
1	B	707	ILE	2.3
1	B	689	GLU	2.2
1	B	774	ASP	2.2
1	B	744	LEU	2.2

Continued on next page...

Continued from previous page...

Mol	Chain	Res	Type	RSRZ
1	A	773	ALA	2.1
1	B	785	ALA	2.1
1	B	583	ASP	2.1
1	B	610	ASP	2.1
1	A	789	THR	2.0
1	A	595	GLU	2.0

6.2 Non-standard residues in protein, DNA, RNA chains ⓘ

There are no non-standard protein/DNA/RNA residues in this entry.

6.3 Carbohydrates ⓘ

There are no carbohydrates in this entry.

6.4 Ligands ⓘ

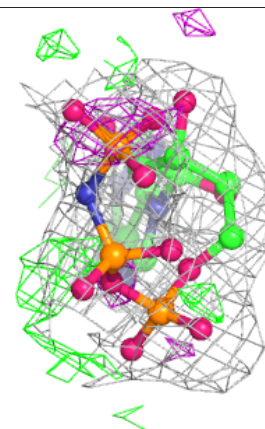
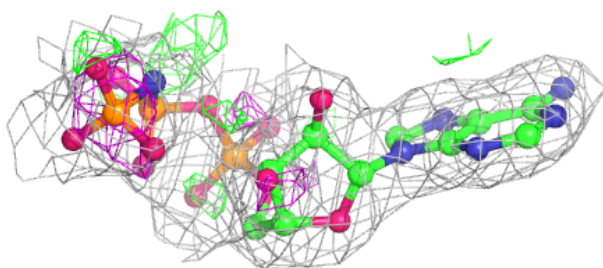
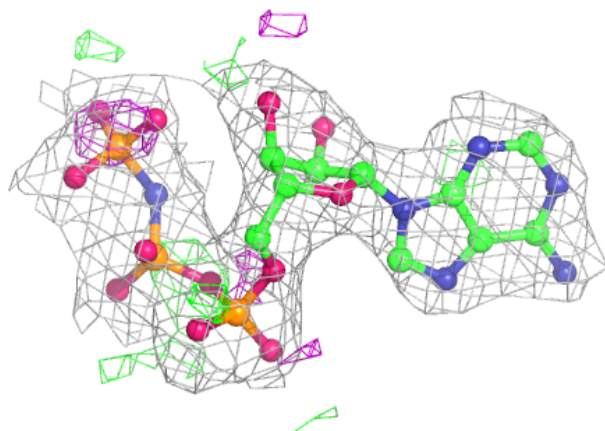
In the following table, the Atoms column lists the number of modelled atoms in the group and the number defined in the chemical component dictionary. The B-factors column lists the minimum, median, 95th percentile and maximum values of B factors of atoms in the group. The column labelled 'Q<0.9' lists the number of atoms with occupancy less than 0.9.

Mol	Type	Chain	Res	Atoms	RSCC	RSR	B-factors(Å ²)	Q<0.9
2	MG	B	5	1/1	0.67	0.12	42,42,42,42	0
2	MG	B	6	1/1	0.71	0.24	67,67,67,67	0
2	MG	A	4	1/1	0.85	0.09	51,51,51,51	0
4	BME	A	3	4/4	0.89	0.21	69,71,71,75	0
3	ANP	B	2	31/31	0.92	0.14	40,45,66,67	0
3	ANP	A	1	31/31	0.94	0.11	38,42,59,61	0

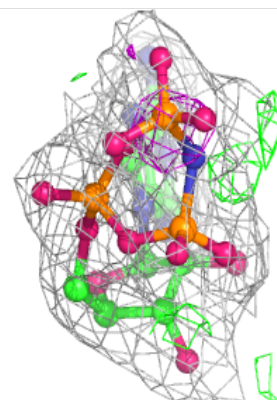
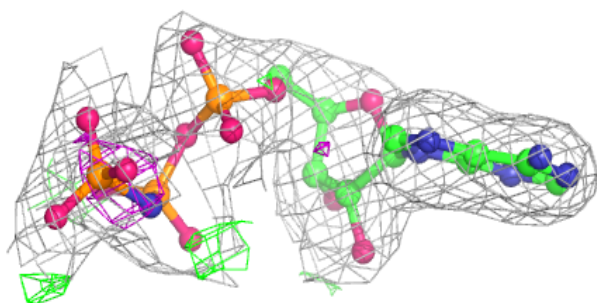
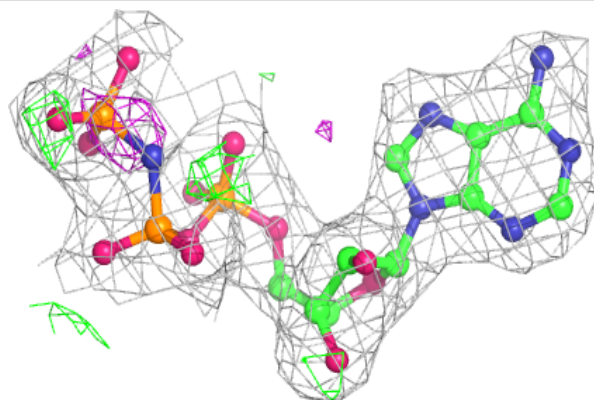
The following is a graphical depiction of the model fit to experimental electron density of all instances of the Ligand of Interest. In addition, ligands with molecular weight > 250 and outliers as shown on the geometry validation Tables will also be included. Each fit is shown from different orientation to approximate a three-dimensional view.

Electron density around ANP B 2:

$2mF_o-DF_c$ (at 0.7 rmsd) in gray
 mF_o-DF_c (at 3 rmsd) in purple (negative)
and green (positive)

**Electron density around ANP A 1:**

$2mF_o-DF_c$ (at 0.7 rmsd) in gray
 mF_o-DF_c (at 3 rmsd) in purple (negative)
and green (positive)



6.5 Other polymers [i](#)

There are no such residues in this entry.