



Full wwPDB X-ray Structure Validation Report ⓘ

May 22, 2020 – 07:04 pm BST

PDB ID : 3P19
Title : Improved NADPH-dependent Blue Fluorescent Protein
Authors : Kao, T.H.; Chen, Y.; Pai, C.H.; Wang, A.H.J.
Deposited on : 2010-09-30
Resolution : 2.05 Å(reported)

This is a Full wwPDB X-ray Structure Validation Report for a publicly released PDB entry.

We welcome your comments at validation@mail.wwpdb.org

A user guide is available at

<https://www.wwpdb.org/validation/2017/XrayValidationReportHelp>

with specific help available everywhere you see the ⓘ symbol.

The following versions of software and data (see [references ⓘ](#)) were used in the production of this report:

MolProbity : 4.02b-467
Mogul : 1.8.5 (274361), CSD as541be (2020)
Xtriage (Phenix) : 1.13
EDS : 2.11
buster-report : 1.1.7 (2018)
Percentile statistics : 20191225.v01 (using entries in the PDB archive December 25th 2019)
Refmac : 5.8.0158
CCP4 : 7.0.044 (Gargrove)
Ideal geometry (proteins) : Engh & Huber (2001)
Ideal geometry (DNA, RNA) : Parkinson et al. (1996)
Validation Pipeline (wwPDB-VP) : 2.11

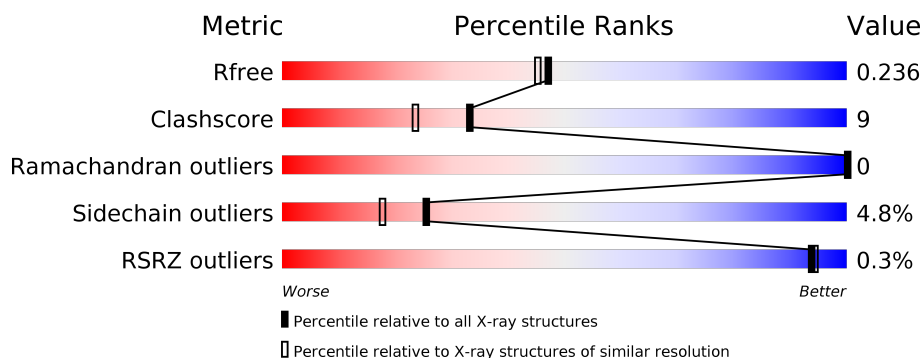
1 Overall quality at a glance ⓘ

The following experimental techniques were used to determine the structure:

X-RAY DIFFRACTION

The reported resolution of this entry is 2.05 Å.

Percentile scores (ranging between 0-100) for global validation metrics of the entry are shown in the following graphic. The table shows the number of entries on which the scores are based.



Metric	Whole archive (#Entries)	Similar resolution (#Entries, resolution range(Å))
R_{free}	130704	1692 (2.04-2.04)
Clashscore	141614	1773 (2.04-2.04)
Ramachandran outliers	138981	1752 (2.04-2.04)
Sidechain outliers	138945	1752 (2.04-2.04)
RSRZ outliers	127900	1672 (2.04-2.04)

The table below summarises the geometric issues observed across the polymeric chains and their fit to the electron density. The red, orange, yellow and green segments on the lower bar indicate the fraction of residues that contain outliers for ≥ 3 , 2, 1 and 0 types of geometric quality criteria respectively. A grey segment represents the fraction of residues that are not modelled. The numeric value for each fraction is indicated below the corresponding segment, with a dot representing fractions $\leq 5\%$. The upper red bar (where present) indicates the fraction of residues that have poor fit to the electron density. The numeric value is given above the bar.

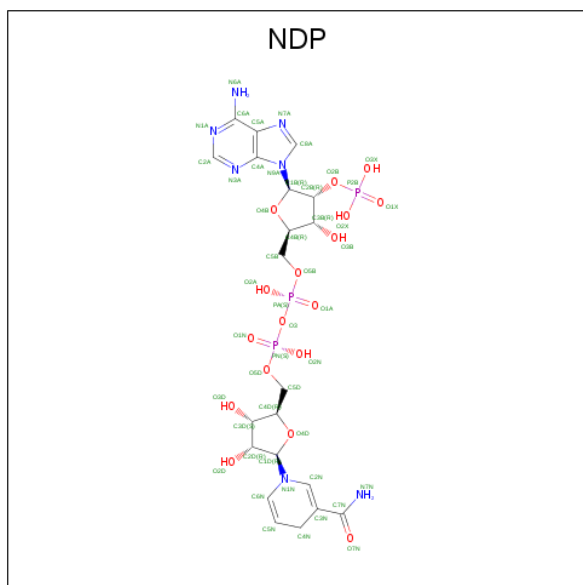
Mol	Chain	Length	Quality of chain
1	A	266	<div> <div>74%</div> <div>14%</div> <div>•</div> <div>10%</div> </div>
1	B	266	<div> <div>65%</div> <div>16%</div> <div>•</div> <div>18%</div> </div>
1	C	266	<div> <div>%</div> <div>64%</div> <div>17%</div> <div>•</div> <div>18%</div> </div>
1	D	266	<div> <div>72%</div> <div>15%</div> <div>•</div> <div>11%</div> </div>

In the tables below, the ZeroOcc column contains the number of atoms modelled with zero occupancy, the AltConf column contains the number of residues with at least one atom in alternate conformation and the Trace column contains the number of residues modelled with at most 2 atoms.

- Molecule 1 is a protein called Putative blue fluorescent protein.

Mol	Chain	Residues	Atoms					ZeroOcc	AltConf	Trace
1	A	239	Total 1817	C 1140	N 324	O 341	S 12	0	0	0
1	B	218	Total 1643	C 1033	N 293	O 307	S 10	0	0	0
1	C	218	Total 1643	C 1033	N 293	O 307	S 10	0	0	0
1	D	238	Total 1809	C 1135	N 323	O 340	S 11	0	0	0

- Molecule 2 is NADPH DIHYDRO-NICOTINAMIDE-ADENINE-DINUCLEOTIDE PHOSPHATE (three-letter code: NDP) (formula: $C_{21}H_{30}N_7O_{17}P_3$).



Mol	Chain	Residues	Atoms					ZeroOcc	AltConf
2	A	1	Total 48	C 21	N 7	O 17	P 3	0	0
2	B	1	Total 48	C 21	N 7	O 17	P 3	0	0

Continued on next page...

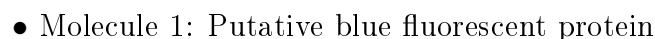
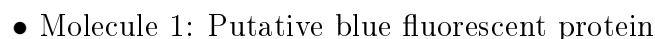
Continued from previous page...

Mol	Chain	Residues	Atoms					ZeroOcc	AltConf
2	C	1	Total	C	N	O	P	0	0
			48	21	7	17	3		
2	D	1	Total	C	N	O	P	0	0
			48	21	7	17	3		

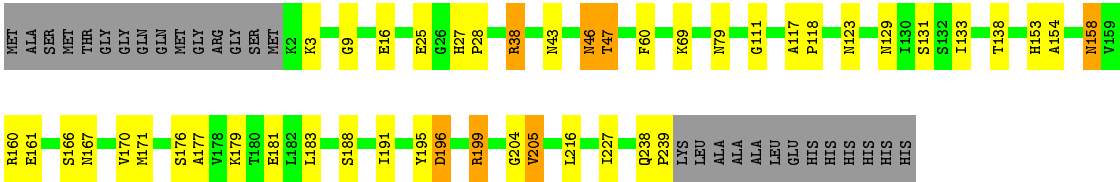
- Molecule 3 is water.

Mol	Chain	Residues	Atoms		ZeroOcc	AltConf
3	A	132	Total	O	0	0
			132	132		
3	B	128	Total	O	0	0
			128	128		
3	C	137	Total	O	0	0
			137	137		
3	D	146	Total	O	0	0
			146	146		

- Molecule 1: Putative blue fluorescent protein



Chain D: 72% 15% 11%



4 Data and refinement statistics

Property	Value	Source
Space group	P 43	Depositor
Cell constants a, b, c, α , β , γ	64.40 Å 64.40 Å 262.59 Å 90.00° 90.00° 90.00°	Depositor
Resolution (Å)	24.32 – 2.05 24.32 – 2.05	Depositor EDS
% Data completeness (in resolution range)	99.5 (24.32-2.05) 99.5 (24.32-2.05)	Depositor EDS
R_{merge}	0.07	Depositor
R_{sym}	(Not available)	Depositor
$\langle I/\sigma(I) \rangle$ ¹	2.06 (at 2.04 Å)	Xtriage
Refinement program	REFMAC 5.5.0072	Depositor
R, R_{free}	0.186 , 0.239 0.185 , 0.236	Depositor DCC
R_{free} test set	3352 reflections (5.06%)	wwPDB-VP
Wilson B-factor (Å ²)	33.9	Xtriage
Anisotropy	0.036	Xtriage
Bulk solvent k_{sol} (e/Å ³), B_{sol} (Å ²)	0.33 , 34.5	EDS
L-test for twinning ²	$\langle L \rangle = 0.50$, $\langle L^2 \rangle = 0.34$	Xtriage
Estimated twinning fraction	0.489 for h,-k,-l	Xtriage
F_o, F_c correlation	0.97	EDS
Total number of atoms	7647	wwPDB-VP
Average B, all atoms (Å ²)	35.0	wwPDB-VP

Xtriage's analysis on translational NCS is as follows: *The largest off-origin peak in the Patterson function is 4.00% of the height of the origin peak. No significant pseudotranslation is detected.*

¹Intensities estimated from amplitudes.

²Theoretical values of $\langle |L| \rangle$, $\langle L^2 \rangle$ for acentric reflections are 0.5, 0.333 respectively for untwinned datasets, and 0.375, 0.2 for perfectly twinned datasets.

5 Model quality

5.1 Standard geometry

Bond lengths and bond angles in the following residue types are not validated in this section: NDP

The Z score for a bond length (or angle) is the number of standard deviations the observed value is removed from the expected value. A bond length (or angle) with $|Z| > 5$ is considered an outlier worth inspection. RMSZ is the root-mean-square of all Z scores of the bond lengths (or angles).

Mol	Chain	Bond lengths		Bond angles	
		RMSZ	$\# Z > 5$	RMSZ	$\# Z > 5$
1	A	0.52	0/1844	0.58	0/2500
1	B	0.54	0/1664	0.60	0/2254
1	C	0.53	0/1664	0.57	0/2254
1	D	0.55	0/1836	0.60	0/2490
All	All	0.54	0/7008	0.59	0/9498

Chiral center outliers are detected by calculating the chiral volume of a chiral center and verifying if the center is modelled as a planar moiety or with the opposite hand. A planarity outlier is detected by checking planarity of atoms in a peptide group, atoms in a mainchain group or atoms of a sidechain that are expected to be planar.

Mol	Chain	#Chirality outliers	#Planarity outliers
1	A	0	1
1	C	0	1
1	D	0	2
All	All	0	4

There are no bond length outliers.

There are no bond angle outliers.

There are no chirality outliers.

All (4) planarity outliers are listed below:

Mol	Chain	Res	Type	Group
1	A	204	GLY	Peptide
1	C	182	LEU	Peptide
1	D	204	GLY	Peptide
1	D	46	ASN	Peptide

5.2 Too-close contacts ⓘ

In the following table, the Non-H and H(model) columns list the number of non-hydrogen atoms and hydrogen atoms in the chain respectively. The H(added) column lists the number of hydrogen atoms added and optimized by MolProbity. The Clashes column lists the number of clashes within the asymmetric unit, whereas Symm-Clashes lists symmetry related clashes.

Mol	Chain	Non-H	H(model)	H(added)	Clashes	Symm-Clashes
1	A	1817	0	1853	30	0
1	B	1643	0	1689	32	0
1	C	1643	0	1689	39	0
1	D	1809	0	1841	28	0
2	A	48	0	26	2	0
2	B	48	0	26	3	0
2	C	48	0	26	3	0
2	D	48	0	26	2	0
3	A	132	0	0	1	0
3	B	128	0	0	4	0
3	C	137	0	0	7	0
3	D	146	0	0	1	0
All	All	7647	0	7176	123	0

The all-atom clashscore is defined as the number of clashes found per 1000 atoms (including hydrogen atoms). The all-atom clashscore for this structure is 9.

All (123) close contacts within the same asymmetric unit are listed below, sorted by their clash magnitude.

Atom-1	Atom-2	Interatomic distance (Å)	Clash overlap (Å)
1:A:238:GLN:HB2	1:A:239:PRO:HD2	1.12	1.05
1:A:238:GLN:HB2	1:A:239:PRO:CD	1.94	0.96
1:C:100:MET:HE1	1:C:145:TYR:HA	1.44	0.95
1:C:100:MET:HE3	1:C:145:TYR:HD1	1.31	0.95
1:D:38:ARG:NH2	1:D:181:GLU:OE2	2.06	0.88
1:A:177:ALA:HB1	1:A:205:VAL:HG22	1.55	0.86
1:C:37:GLU:HB3	3:C:328:HOH:O	1.75	0.84
1:A:179:LYS:HG3	1:A:205:VAL:HG12	1.61	0.81
1:B:236:LYS:O	1:B:237:GLN:HB2	1.82	0.80
1:B:115:VAL:O	1:B:119:MET:HG3	1.82	0.79
1:C:116:LEU:HD13	1:C:127:ILE:HD11	1.66	0.78
1:D:238:GLN:HB3	1:D:239:PRO:HD2	1.67	0.76
1:C:100:MET:CE	1:C:145:TYR:HD1	2.00	0.74
1:A:177:ALA:HB1	1:A:205:VAL:CG2	2.17	0.73
1:A:188:SER:HB3	1:A:191:ILE:HD12	1.72	0.72

Continued on next page...

Continued from previous page...

Atom-1	Atom-2	Interatomic distance (Å)	Clash overlap (Å)
1:C:122:ARG:NH2	3:C:303:HOH:O	2.15	0.70
1:D:177:ALA:HB1	1:D:205:VAL:CG2	2.21	0.70
1:A:117:ALA:HB3	1:A:118:PRO:HD3	1.73	0.69
1:A:158:ASN:OD1	1:B:138:THR:HB	1.92	0.69
1:B:116:LEU:HD13	1:B:127:ILE:HD11	1.73	0.69
1:C:84:MET:CE	1:C:183:LEU:HD13	2.24	0.68
1:D:177:ALA:HB1	1:D:205:VAL:HG22	1.74	0.68
1:C:9:GLY:HA2	2:C:2001:NDP:H1B	1.76	0.68
1:B:171:MET:HE1	3:B:253:HOH:O	1.93	0.67
1:D:196:ASP:HA	1:D:199:ARG:HD3	1.75	0.67
1:D:117:ALA:HB3	1:D:118:PRO:HD3	1.75	0.67
1:D:79:ASN:HD21	1:D:111:GLY:HA3	1.62	0.65
1:C:3:LYS:O	1:C:27:HIS:HD2	1.81	0.64
1:D:79:ASN:HB2	1:D:129:ASN:HD22	1.63	0.64
1:A:196:ASP:HA	1:A:199:ARG:HD3	1.79	0.63
1:C:100:MET:HE1	1:C:145:TYR:CA	2.25	0.63
1:C:158:ASN:OD1	1:D:138:THR:HB	1.98	0.63
1:A:238:GLN:CB	1:A:239:PRO:HD2	2.05	0.62
1:B:3:LYS:O	1:B:27:HIS:HD2	1.84	0.61
1:C:157:GLU:OE2	1:C:160:ARG:NH1	2.34	0.61
1:A:183:LEU:HD22	1:A:195:TYR:CD2	2.36	0.60
1:B:84:MET:CE	1:B:183:LEU:HD13	2.32	0.59
1:D:47:THR:HG22	1:D:47:THR:O	2.02	0.59
1:B:131:SER:O	2:B:2001:NDP:H6N	2.02	0.59
1:A:9:GLY:HA2	2:A:2001:NDP:H1B	1.84	0.58
1:B:9:GLY:HA2	2:B:2001:NDP:H1B	1.86	0.58
1:A:27:HIS:HE1	3:A:273:HOH:O	1.87	0.58
1:D:188:SER:HB3	1:D:191:ILE:HD12	1.86	0.58
1:A:158:ASN:O	1:A:162:GLU:HG3	2.04	0.57
1:C:131:SER:O	2:C:2001:NDP:H6N	2.05	0.56
1:D:131:SER:O	2:D:2001:NDP:H6N	2.06	0.56
1:A:160:ARG:NH2	1:A:161:GLU:HG3	2.21	0.56
1:C:160:ARG:HD2	3:C:418:HOH:O	2.06	0.56
1:C:100:MET:HE3	1:C:145:TYR:CD1	2.24	0.55
1:C:100:MET:CE	1:C:145:TYR:CD1	2.86	0.55
1:B:25:GLU:HG3	1:B:216:LEU:HD21	1.87	0.55
1:C:138:THR:HB	1:D:158:ASN:OD1	2.07	0.55
1:A:131:SER:O	2:A:2001:NDP:H6N	2.07	0.55
1:B:32:LEU:HD22	1:B:52:VAL:HG21	1.88	0.54
1:C:115:VAL:O	1:C:119:MET:HG3	2.06	0.54
1:D:171:MET:HG2	1:D:227:ILE:O	2.07	0.54

Continued on next page...

Continued from previous page...

Atom-1	Atom-2	Interatomic distance (Å)	Clash overlap (Å)
1:D:28:PRO:HA	1:D:46:ASN:O	2.08	0.53
1:A:177:ALA:O	1:A:205:VAL:HG13	2.09	0.52
1:C:157:GLU:CD	1:C:160:ARG:NH1	2.63	0.52
1:D:183:LEU:HD22	1:D:195:TYR:CD2	2.45	0.52
1:A:140:PRO:O	1:A:141:ASP:HB2	2.09	0.52
1:C:76:ALA:HA	1:C:126:THR:O	2.10	0.52
1:A:37:GLU:HG2	1:A:38:ARG:N	2.23	0.52
1:B:204:GLY:HA2	1:B:234:PRO:HB3	1.93	0.51
1:D:3:LYS:O	1:D:27:HIS:HD2	1.92	0.51
1:B:236:LYS:O	1:B:237:GLN:CB	2.54	0.51
1:A:177:ALA:CB	1:A:205:VAL:HG22	2.36	0.51
1:B:69:LYS:HB3	3:B:304:HOH:O	2.10	0.51
1:D:183:LEU:HD22	1:D:195:TYR:HD2	1.76	0.51
1:B:133:ILE:HA	1:B:136:LYS:HD3	1.93	0.50
1:D:16:GLU:OE1	3:D:490:HOH:O	2.18	0.50
1:B:171:MET:CE	3:B:253:HOH:O	2.54	0.50
1:B:27:HIS:HE1	3:B:339:HOH:O	1.94	0.50
1:C:173:ILE:HG13	1:C:215:VAL:HG22	1.95	0.49
1:C:2:LYS:HB3	3:C:317:HOH:O	2.12	0.49
1:D:160:ARG:HB2	1:D:170:VAL:HB	1.94	0.49
1:A:3:LYS:O	1:A:27:HIS:HD2	1.95	0.49
1:C:25:GLU:HG2	1:C:220:GLN:NE2	2.27	0.49
1:B:84:MET:HE1	1:B:183:LEU:HD13	1.94	0.49
1:C:108:LEU:O	1:C:112:MET:HG3	2.13	0.48
1:A:25:GLU:CG	1:A:216:LEU:HD21	2.44	0.48
1:C:116:LEU:HD13	1:C:127:ILE:CD1	2.40	0.48
1:B:116:LEU:HD13	1:B:127:ILE:CD1	2.41	0.48
1:B:236:LYS:HE2	1:D:167:ASN:HB2	1.96	0.48
1:C:80:ASN:HD22	1:C:130:ILE:HG13	1.79	0.48
1:C:175:PRO:O	2:C:2001:NDP:H5N	2.13	0.48
1:B:57:LYS:NZ	1:B:113:GLN:HE21	2.12	0.47
1:D:25:GLU:HG3	1:D:216:LEU:HD21	1.96	0.47
1:D:9:GLY:HA2	2:D:2001:NDP:H1B	1.94	0.47
1:C:157:GLU:CD	1:C:160:ARG:HH12	2.17	0.47
1:D:133:ILE:HD12	1:D:176:SER:HB2	1.97	0.47
1:C:64:ILE:O	1:C:68:GLU:HG3	2.15	0.47
1:B:175:PRO:O	2:B:2001:NDP:H5N	2.14	0.46
1:C:133:ILE:HD12	1:C:176:SER:HB2	1.97	0.46
1:B:32:LEU:HD22	1:B:52:VAL:CG2	2.46	0.46
1:C:84:MET:HE1	1:C:183:LEU:HD13	1.95	0.46
1:B:157:GLU:OE1	1:B:160:ARG:NH1	2.49	0.46

Continued on next page...

Continued from previous page...

Atom-1	Atom-2	Interatomic distance (Å)	Clash overlap (Å)
1:A:236:LYS:HE2	3:C:280:HOH:O	2.17	0.45
1:B:80:ASN:HD22	1:B:130:ILE:HG13	1.81	0.45
1:A:171:MET:HG2	1:A:227:ILE:O	2.15	0.45
1:B:204:GLY:HA2	1:B:234:PRO:CB	2.45	0.45
1:D:177:ALA:O	1:D:205:VAL:HG22	2.17	0.45
1:B:76:ALA:HA	1:B:126:THR:O	2.17	0.44
1:C:117:ALA:HB3	1:C:118:PRO:CD	2.48	0.44
1:C:150:PHE:CG	1:D:154:ALA:HB2	2.52	0.44
1:C:140:PRO:O	1:C:141:ASP:HB2	2.18	0.44
1:A:154:ALA:HB2	1:B:150:PHE:CG	2.53	0.44
1:A:116:LEU:HD13	1:A:127:ILE:HD11	1.99	0.43
1:C:171:MET:CE	3:C:259:HOH:O	2.65	0.43
1:C:236:LYS:O	1:C:237:GLN:HB3	2.18	0.43
1:C:27:HIS:HE1	3:C:275:HOH:O	2.01	0.43
1:D:123:ASN:HA	1:D:166:SER:O	2.19	0.43
1:A:160:ARG:HB2	1:A:170:VAL:HB	2.00	0.42
1:A:76:ALA:HA	1:A:126:THR:O	2.20	0.42
1:B:88:GLN:NE2	1:B:141:ASP:OD1	2.48	0.42
1:A:183:LEU:HD22	1:A:195:TYR:HD2	1.81	0.42
1:B:52:VAL:HG22	1:B:59:THR:HG22	2.02	0.42
1:C:52:VAL:HG22	1:C:59:THR:HG22	2.03	0.41
1:C:140:PRO:O	1:C:141:ASP:CB	2.69	0.41
1:D:160:ARG:HH11	1:D:160:ARG:HG2	1.86	0.41
1:B:123:ASN:HA	1:B:166:SER:O	2.20	0.40
1:A:173:ILE:O	1:A:175:PRO:HD3	2.21	0.40
1:B:173:ILE:HG13	1:B:215:VAL:HG22	2.04	0.40

There are no symmetry-related clashes.

5.3 Torsion angles [i](#)

5.3.1 Protein backbone [i](#)

In the following table, the Percentiles column shows the percent Ramachandran outliers of the chain as a percentile score with respect to all X-ray entries followed by that with respect to entries of similar resolution.

The Analysed column shows the number of residues for which the backbone conformation was analysed, and the total number of residues.

Mol	Chain	Analysed	Favoured	Allowed	Outliers	Percentiles	
1	A	237/266 (89%)	230 (97%)	7 (3%)	0	100	100
1	B	214/266 (80%)	210 (98%)	4 (2%)	0	100	100
1	C	214/266 (80%)	209 (98%)	5 (2%)	0	100	100
1	D	236/266 (89%)	228 (97%)	8 (3%)	0	100	100
All	All	901/1064 (85%)	877 (97%)	24 (3%)	0	100	100

There are no Ramachandran outliers to report.

5.3.2 Protein sidechains ⓘ

In the following table, the Percentiles column shows the percent sidechain outliers of the chain as a percentile score with respect to all X-ray entries followed by that with respect to entries of similar resolution.

The Analysed column shows the number of residues for which the sidechain conformation was analysed, and the total number of residues.

Mol	Chain	Analysed	Rotameric	Outliers	Percentiles	
1	A	192/211 (91%)	186 (97%)	6 (3%)	40	33
1	B	173/211 (82%)	163 (94%)	10 (6%)	20	11
1	C	173/211 (82%)	166 (96%)	7 (4%)	31	24
1	D	191/211 (90%)	179 (94%)	12 (6%)	18	9
All	All	729/844 (86%)	694 (95%)	35 (5%)	25	18

All (35) residues with a non-rotameric sidechain are listed below:

Mol	Chain	Res	Type
1	A	60	PHE
1	A	158	ASN
1	A	192	LYS
1	A	196	ASP
1	A	199	ARG
1	A	205	VAL
1	B	38	ARG
1	B	60	PHE
1	B	116	LEU
1	B	122	ARG
1	B	136	LYS
1	B	141	ASP
1	B	153	HIS

Continued on next page...

Continued from previous page...

Mol	Chain	Res	Type
1	B	158	ASN
1	B	183	LEU
1	B	205	VAL
1	C	24	GLU
1	C	40	LYS
1	C	60	PHE
1	C	116	LEU
1	C	141	ASP
1	C	153	HIS
1	C	183	LEU
1	D	38	ARG
1	D	43	ASN
1	D	47	THR
1	D	60	PHE
1	D	69	LYS
1	D	153	HIS
1	D	158	ASN
1	D	161	GLU
1	D	179	LYS
1	D	196	ASP
1	D	199	ARG
1	D	205	VAL

Some sidechains can be flipped to improve hydrogen bonding and reduce clashes. All (18) such sidechains are listed below:

Mol	Chain	Res	Type
1	A	27	HIS
1	A	80	ASN
1	A	88	GLN
1	A	189	GLN
1	B	27	HIS
1	B	80	ASN
1	B	113	GLN
1	C	27	HIS
1	C	80	ASN
1	C	98	GLN
1	C	220	GLN
1	C	237	GLN
1	D	27	HIS
1	D	46	ASN
1	D	79	ASN
1	D	80	ASN

Continued on next page...

Continued from previous page...

Mol	Chain	Res	Type
1	D	129	ASN
1	D	189	GLN

5.3.3 RNA ⓘ

There are no RNA molecules in this entry.

5.4 Non-standard residues in protein, DNA, RNA chains ⓘ

There are no non-standard protein/DNA/RNA residues in this entry.

5.5 Carbohydrates ⓘ

There are no carbohydrates in this entry.

5.6 Ligand geometry ⓘ

4 ligands are modelled in this entry.

In the following table, the Counts columns list the number of bonds (or angles) for which Mogul statistics could be retrieved, the number of bonds (or angles) that are observed in the model and the number of bonds (or angles) that are defined in the Chemical Component Dictionary. The Link column lists molecule types, if any, to which the group is linked. The Z score for a bond length (or angle) is the number of standard deviations the observed value is removed from the expected value. A bond length (or angle) with $|Z| > 2$ is considered an outlier worth inspection. RMSZ is the root-mean-square of all Z scores of the bond lengths (or angles).

Mol	Type	Chain	Res	Link	Bond lengths			Bond angles		
					Counts	RMSZ	# Z > 2	Counts	RMSZ	# Z > 2
2	NDP	B	2001	-	45,52,52	1.58	5 (11%)	53,80,80	1.28	4 (7%)
2	NDP	A	2001	-	45,52,52	1.53	6 (13%)	53,80,80	1.26	3 (5%)
2	NDP	D	2001	-	45,52,52	1.57	7 (15%)	53,80,80	1.23	3 (5%)
2	NDP	C	2001	-	45,52,52	1.61	6 (13%)	53,80,80	1.20	3 (5%)

In the following table, the Chirals column lists the number of chiral outliers, the number of chiral centers analysed, the number of these observed in the model and the number defined in the Chemical Component Dictionary. Similar counts are reported in the Torsion and Rings columns. '-' means no outliers of that kind were identified.

Mol	Type	Chain	Res	Link	Chirals	Torsions	Rings
2	NDP	B	2001	-	-	13/30/77/77	0/5/5/5
2	NDP	A	2001	-	-	8/30/77/77	0/5/5/5
2	NDP	D	2001	-	-	8/30/77/77	0/5/5/5
2	NDP	C	2001	-	-	11/30/77/77	0/5/5/5

All (24) bond length outliers are listed below:

Mol	Chain	Res	Type	Atoms	Z	Observed(Å)	Ideal(Å)
2	C	2001	NDP	O7N-C7N	4.84	1.36	1.24
2	B	2001	NDP	O7N-C7N	4.81	1.35	1.24
2	C	2001	NDP	C4N-C3N	-4.81	1.40	1.49
2	B	2001	NDP	C4N-C3N	-4.78	1.40	1.49
2	A	2001	NDP	C4N-C3N	-4.61	1.40	1.49
2	D	2001	NDP	C4N-C3N	-4.52	1.41	1.49
2	A	2001	NDP	O7N-C7N	4.19	1.34	1.24
2	D	2001	NDP	O7N-C7N	3.95	1.33	1.24
2	B	2001	NDP	C6N-C5N	3.89	1.40	1.33
2	C	2001	NDP	C6N-C5N	3.85	1.40	1.33
2	D	2001	NDP	C6N-C5N	3.76	1.40	1.33
2	A	2001	NDP	C6N-C5N	3.54	1.39	1.33
2	B	2001	NDP	C4N-C5N	-3.36	1.40	1.48
2	C	2001	NDP	C4N-C5N	-3.31	1.40	1.48
2	A	2001	NDP	C7N-C3N	3.21	1.55	1.48
2	B	2001	NDP	C7N-C3N	3.16	1.55	1.48
2	C	2001	NDP	C7N-C3N	3.12	1.55	1.48
2	D	2001	NDP	C4N-C5N	-3.11	1.40	1.48
2	A	2001	NDP	C4N-C5N	-3.08	1.40	1.48
2	D	2001	NDP	C7N-C3N	3.06	1.55	1.48
2	D	2001	NDP	P2B-O2B	2.55	1.64	1.59
2	D	2001	NDP	O4B-C1B	2.20	1.44	1.41
2	C	2001	NDP	O4D-C1D	2.14	1.47	1.42
2	A	2001	NDP	P2B-O2B	2.06	1.63	1.59

All (13) bond angle outliers are listed below:

Mol	Chain	Res	Type	Atoms	Z	Observed(°)	Ideal(°)
2	A	2001	NDP	N3A-C2A-N1A	-5.03	120.82	128.68
2	D	2001	NDP	N3A-C2A-N1A	-5.02	120.83	128.68
2	B	2001	NDP	N3A-C2A-N1A	-4.58	121.51	128.68
2	C	2001	NDP	N3A-C2A-N1A	-4.18	122.15	128.68
2	A	2001	NDP	O4D-C1D-C2D	-3.00	100.10	106.64
2	B	2001	NDP	C5B-C4B-C3B	-2.97	104.04	115.18

Continued on next page...

Continued from previous page...

Mol	Chain	Res	Type	Atoms	Z	Observed(°)	Ideal(°)
2	C	2001	NDP	O4D-C1D-C2D	-2.82	100.50	106.64
2	A	2001	NDP	C5B-C4B-C3B	-2.77	104.79	115.18
2	C	2001	NDP	C5B-C4B-C3B	-2.62	105.37	115.18
2	B	2001	NDP	O4D-C1D-C2D	-2.58	101.01	106.64
2	B	2001	NDP	C5D-C4D-C3D	-2.26	106.72	115.18
2	D	2001	NDP	C5B-C4B-C3B	-2.13	107.21	115.18
2	D	2001	NDP	O4D-C1D-C2D	-2.12	102.02	106.64

There are no chirality outliers.

All (40) torsion outliers are listed below:

Mol	Chain	Res	Type	Atoms
2	B	2001	NDP	C5B-O5B-PA-O1A
2	B	2001	NDP	PN-O3-PA-O5B
2	B	2001	NDP	C2B-O2B-P2B-O1X
2	B	2001	NDP	C5D-O5D-PN-O3
2	A	2001	NDP	C2B-O2B-P2B-O1X
2	A	2001	NDP	C5D-O5D-PN-O3
2	D	2001	NDP	PN-O3-PA-O5B
2	D	2001	NDP	C2B-O2B-P2B-O1X
2	D	2001	NDP	C5D-O5D-PN-O3
2	C	2001	NDP	C5B-O5B-PA-O1A
2	C	2001	NDP	PN-O3-PA-O5B
2	C	2001	NDP	C5D-O5D-PN-O3
2	B	2001	NDP	O4B-C4B-C5B-O5B
2	B	2001	NDP	C3B-C4B-C5B-O5B
2	C	2001	NDP	C3B-C4B-C5B-O5B
2	B	2001	NDP	O4D-C1D-N1N-C6N
2	C	2001	NDP	O4D-C1D-N1N-C6N
2	C	2001	NDP	O4B-C4B-C5B-O5B
2	A	2001	NDP	O4D-C1D-N1N-C6N
2	A	2001	NDP	PA-O3-PN-O1N
2	D	2001	NDP	O4D-C1D-N1N-C6N
2	A	2001	NDP	PN-O3-PA-O5B
2	B	2001	NDP	C5B-O5B-PA-O3
2	B	2001	NDP	C2B-O2B-P2B-O2X
2	C	2001	NDP	C5B-O5B-PA-O3
2	C	2001	NDP	C2B-O2B-P2B-O2X
2	B	2001	NDP	C5B-O5B-PA-O2A
2	B	2001	NDP	C5D-O5D-PN-O1N
2	A	2001	NDP	C5D-O5D-PN-O1N
2	D	2001	NDP	C5D-O5D-PN-O1N

Continued on next page...

Continued from previous page...

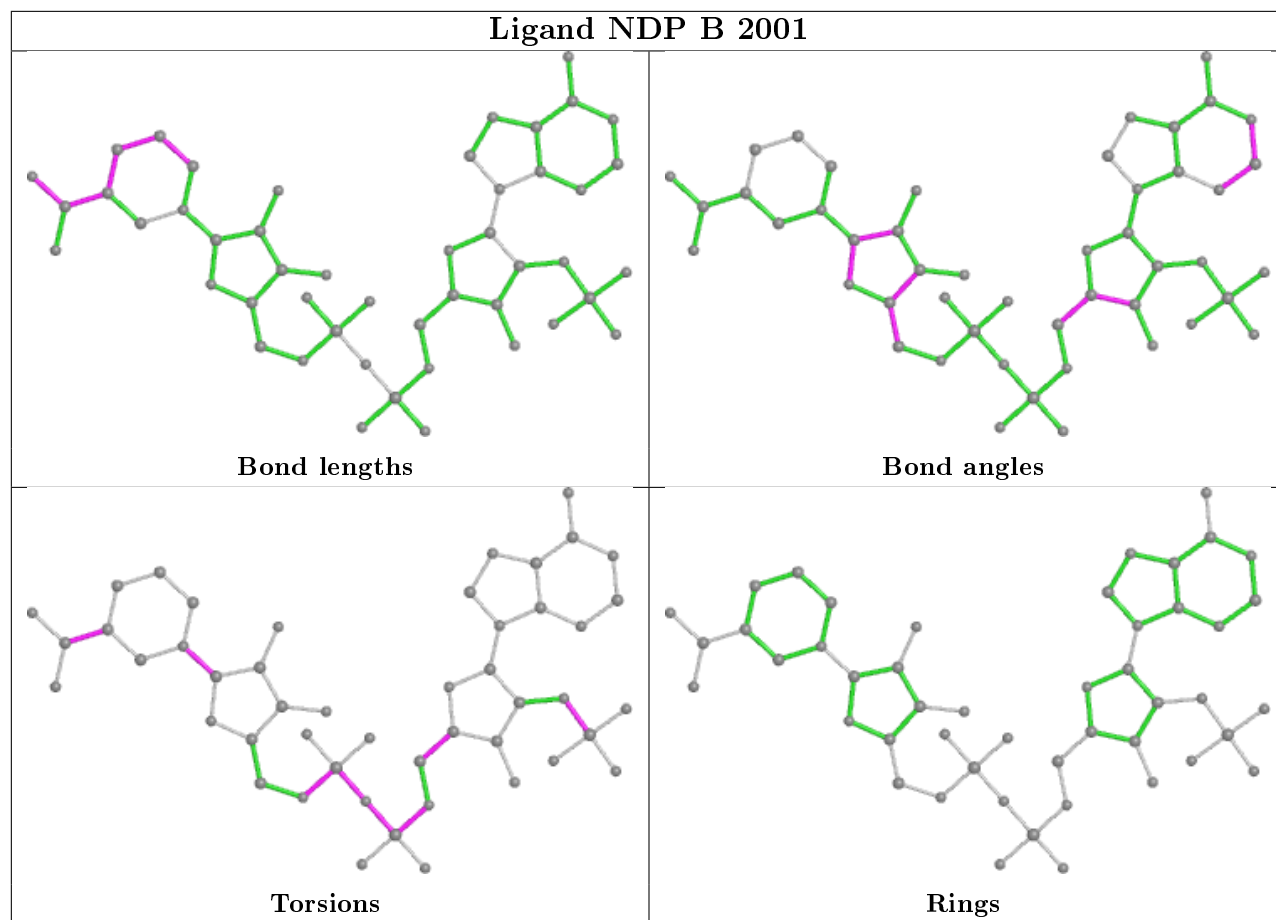
Mol	Chain	Res	Type	Atoms
2	C	2001	NDP	C5B-O5B-PA-O2A
2	C	2001	NDP	C5D-O5D-PN-O1N
2	A	2001	NDP	PA-O3-PN-O2N
2	D	2001	NDP	PA-O3-PN-O1N
2	A	2001	NDP	O4B-C4B-C5B-O5B
2	B	2001	NDP	PA-O3-PN-O2N
2	D	2001	NDP	PA-O3-PN-O2N
2	B	2001	NDP	C2N-C3N-C7N-N7N
2	C	2001	NDP	C2N-C3N-C7N-N7N
2	D	2001	NDP	O4B-C4B-C5B-O5B

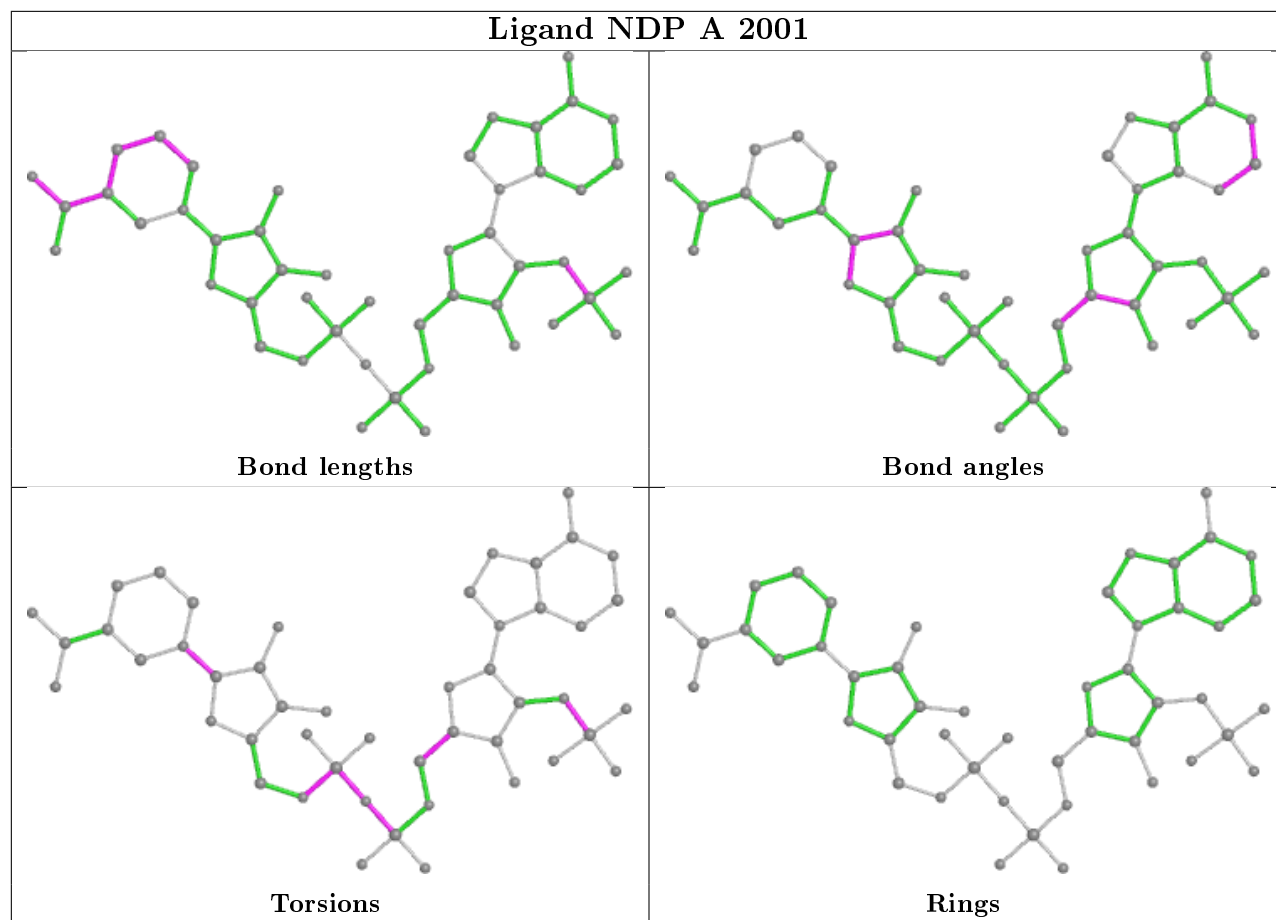
There are no ring outliers.

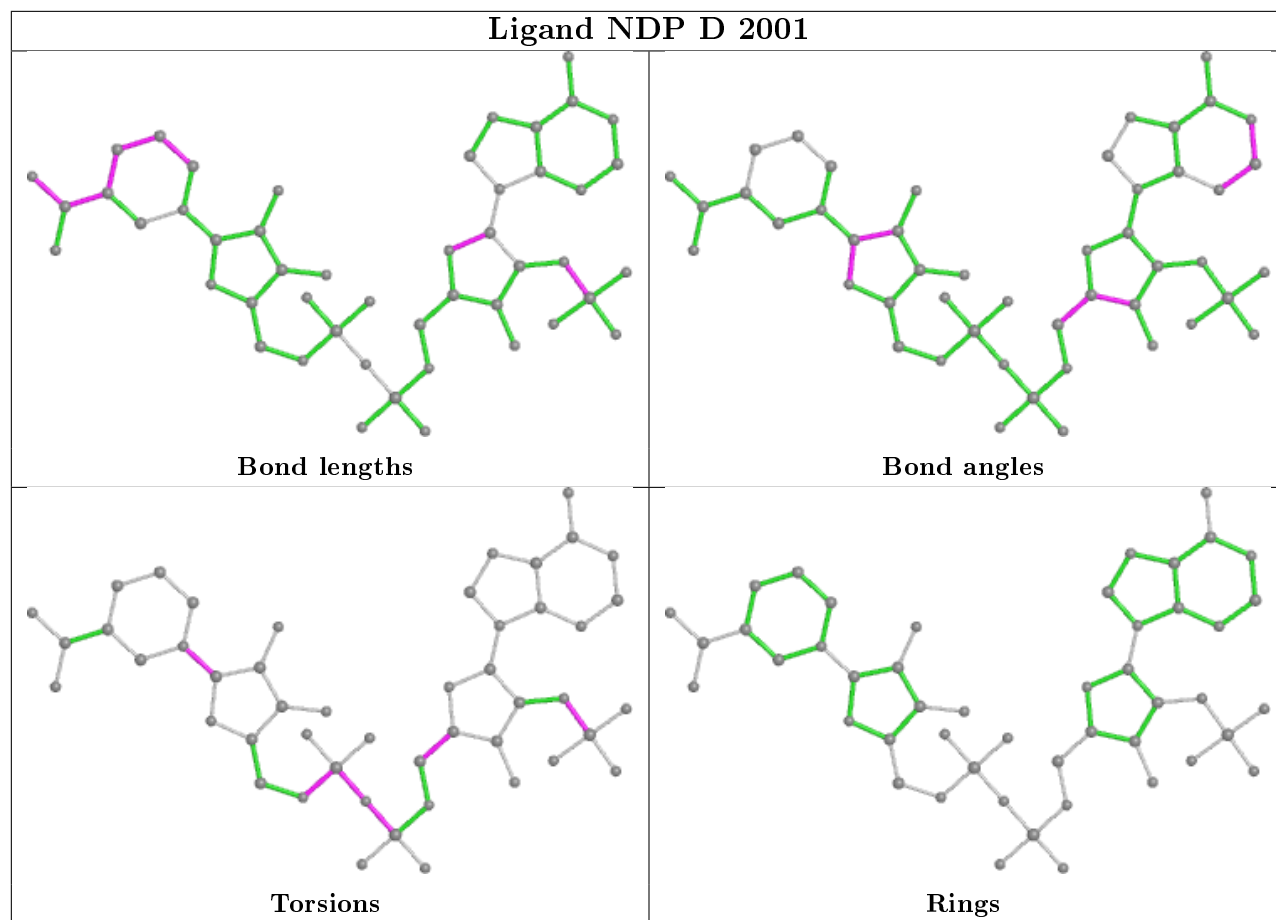
4 monomers are involved in 10 short contacts:

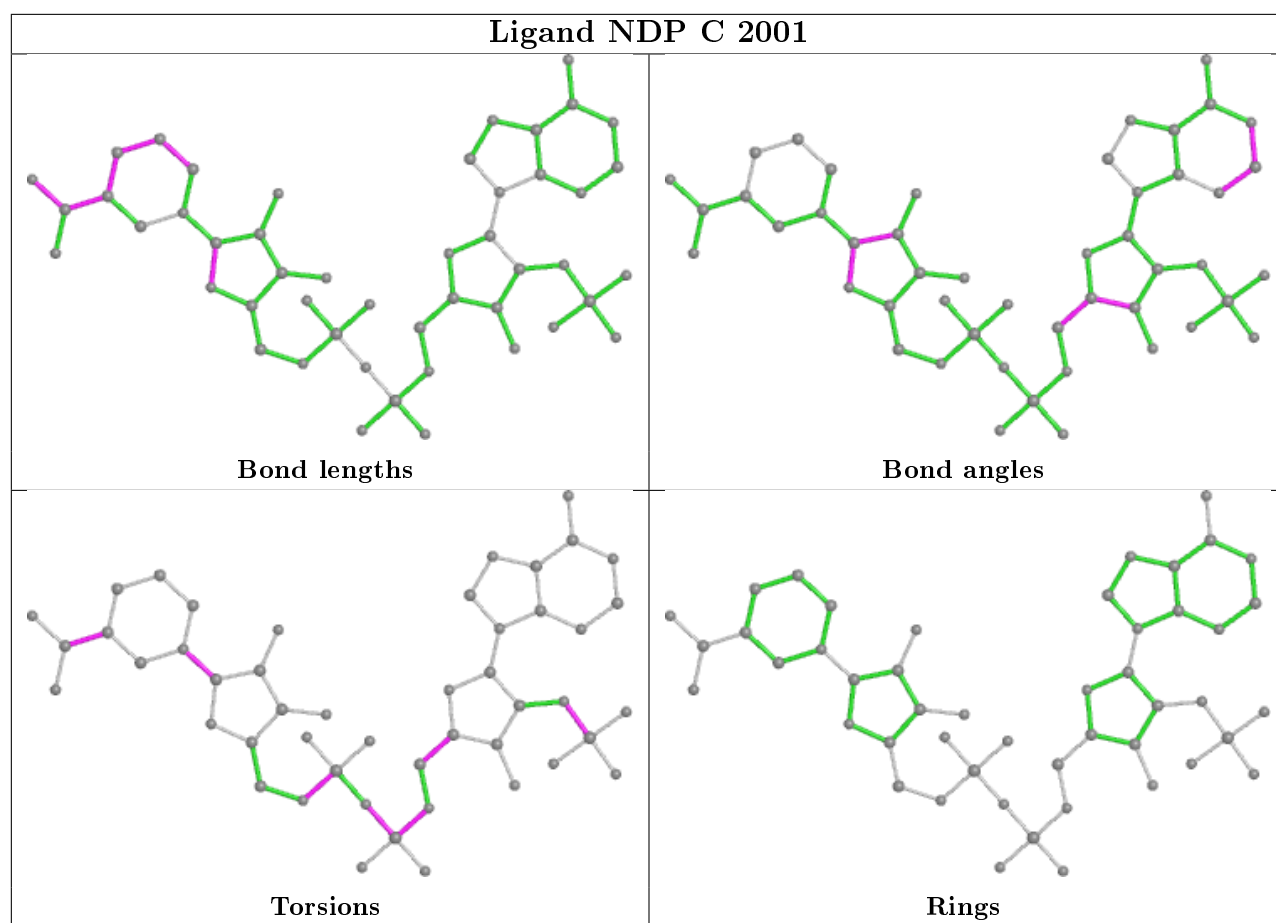
Mol	Chain	Res	Type	Clashes	Symm-Clashes
2	B	2001	NDP	3	0
2	A	2001	NDP	2	0
2	D	2001	NDP	2	0
2	C	2001	NDP	3	0

The following is a two-dimensional graphical depiction of Mogul quality analysis of bond lengths, bond angles, torsion angles, and ring geometry for all instances of the Ligand of Interest. In addition, ligands with molecular weight > 250 and outliers as shown on the validation Tables will also be included. For torsion angles, if less than 5% of the Mogul distribution of torsion angles is within 10 degrees of the torsion angle in question, then that torsion angle is considered an outlier. Any bond that is central to one or more torsion angles identified as an outlier by Mogul will be highlighted in the graph. For rings, the root-mean-square deviation (RMSD) between the ring in question and similar rings identified by Mogul is calculated over all ring torsion angles. If the average RMSD is greater than 60 degrees and the minimal RMSD between the ring in question and any Mogul-identified rings is also greater than 60 degrees, then that ring is considered an outlier. The outliers are highlighted in purple. The color gray indicates Mogul did not find sufficient equivalents in the CSD to analyse the geometry.









5.7 Other polymers [i](#)

There are no such residues in this entry.

5.8 Polymer linkage issues [i](#)

There are no chain breaks in this entry.

6 Fit of model and data [i](#)

6.1 Protein, DNA and RNA chains [i](#)

In the following table, the column labelled ‘#RSRZ> 2’ contains the number (and percentage) of RSRZ outliers, followed by percent RSRZ outliers for the chain as percentile scores relative to all X-ray entries and entries of similar resolution. The OWAB column contains the minimum, median, 95th percentile and maximum values of the occupancy-weighted average B-factor per residue. The column labelled ‘Q< 0.9’ lists the number of (and percentage) of residues with an average occupancy less than 0.9.

Mol	Chain	Analysed	<RSRZ>	#RSRZ>2	OWAB(Å ²)	Q<0.9
1	A	239/266 (89%)	-0.37	0 100 100	22, 34, 55, 67	0
1	B	218/266 (81%)	-0.37	1 (0%) 91 92	20, 32, 46, 60	0
1	C	218/266 (81%)	-0.39	2 (0%) 84 86	21, 31, 48, 63	0
1	D	238/266 (89%)	-0.37	0 100 100	22, 34, 54, 63	0
All	All	913/1064 (85%)	-0.37	3 (0%) 94 94	20, 33, 51, 67	0

All (3) RSRZ outliers are listed below:

Mol	Chain	Res	Type	RSRZ
1	C	183	LEU	3.7
1	C	203	GLY	2.2
1	B	183	LEU	2.0

6.2 Non-standard residues in protein, DNA, RNA chains [i](#)

There are no non-standard protein/DNA/RNA residues in this entry.

6.3 Carbohydrates [i](#)

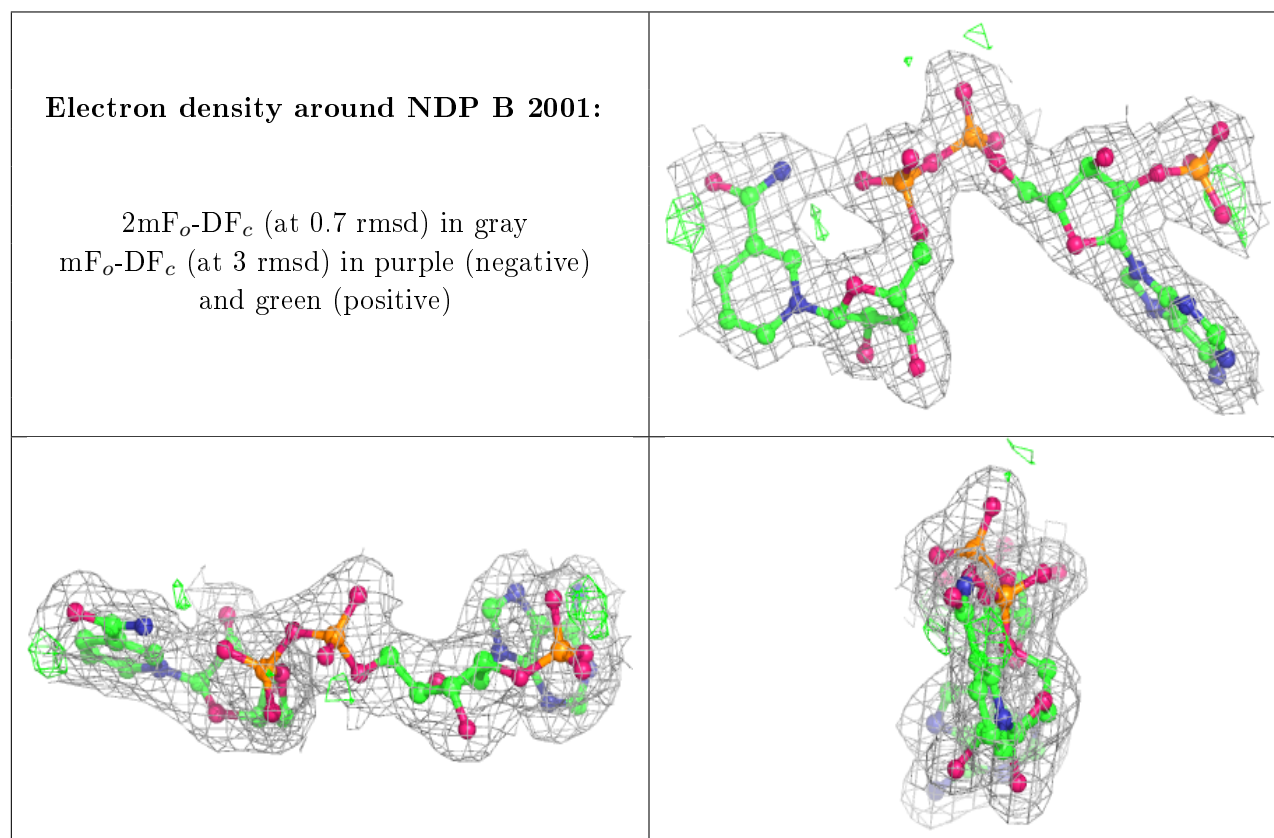
There are no carbohydrates in this entry.

6.4 Ligands [i](#)

In the following table, the Atoms column lists the number of modelled atoms in the group and the number defined in the chemical component dictionary. The B-factors column lists the minimum, median, 95th percentile and maximum values of B factors of atoms in the group. The column labelled ‘Q< 0.9’ lists the number of atoms with occupancy less than 0.9.

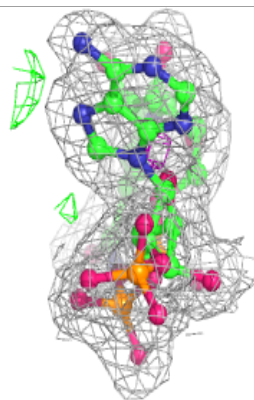
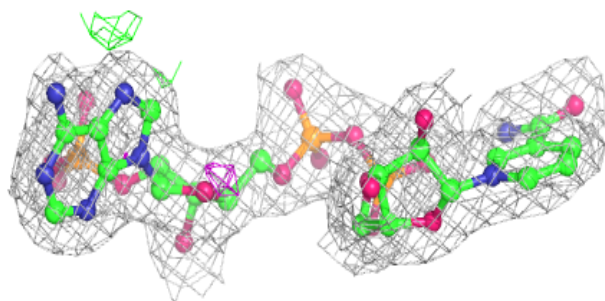
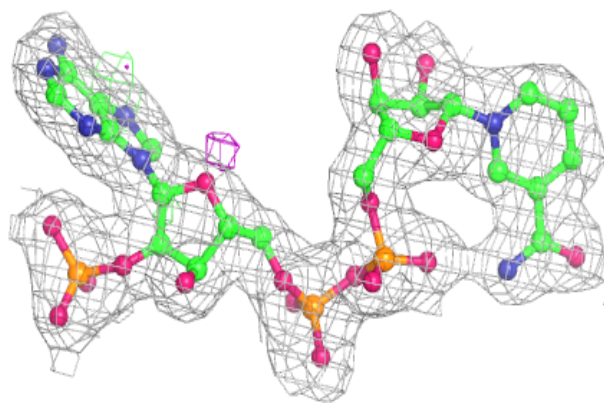
Mol	Type	Chain	Res	Atoms	RSCC	RSR	B-factors(\AA^2)	Q<0.9
2	NDP	B	2001	48/48	0.98	0.09	24,32,41,48	0
2	NDP	A	2001	48/48	0.98	0.09	19,29,35,40	0
2	NDP	D	2001	48/48	0.98	0.09	21,31,37,40	0
2	NDP	C	2001	48/48	0.98	0.09	20,32,41,50	0

The following is a graphical depiction of the model fit to experimental electron density of all instances of the Ligand of Interest. In addition, ligands with molecular weight > 250 and outliers as shown on the geometry validation Tables will also be included. Each fit is shown from different orientation to approximate a three-dimensional view.

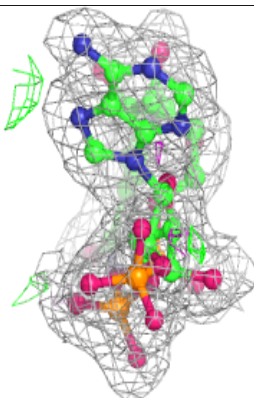
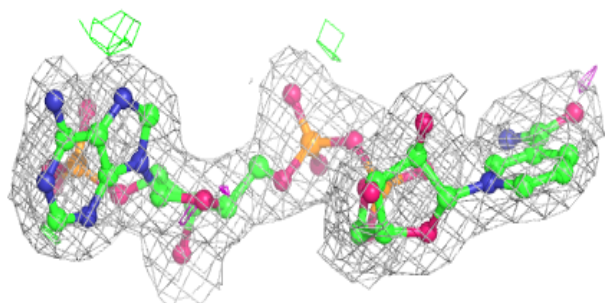
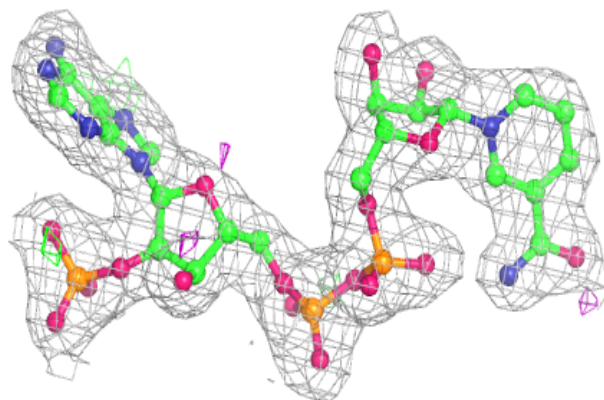


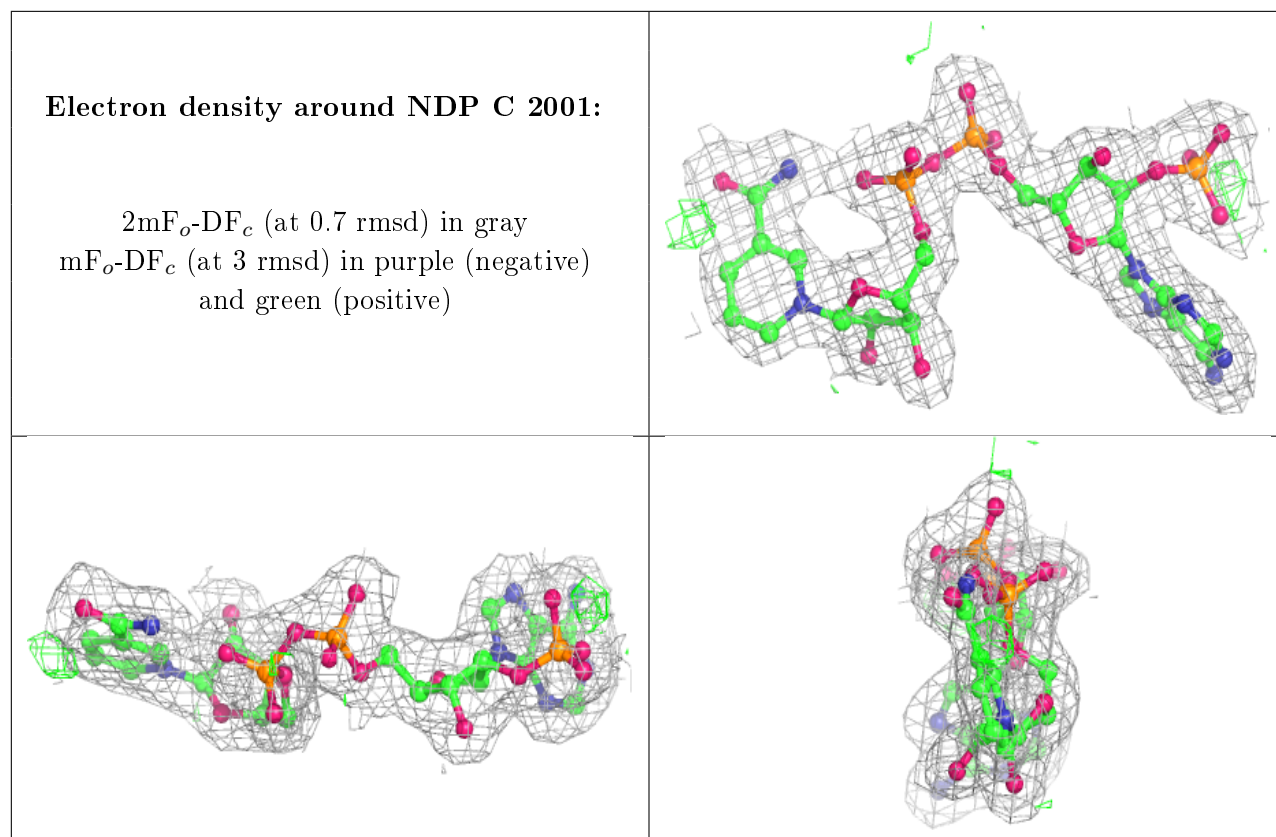
Electron density around NDP A 2001:

$2mF_o-DF_c$ (at 0.7 rmsd) in gray
 mF_o-DF_c (at 3 rmsd) in purple (negative)
and green (positive)

**Electron density around NDP D 2001:**

$2mF_o-DF_c$ (at 0.7 rmsd) in gray
 mF_o-DF_c (at 3 rmsd) in purple (negative)
and green (positive)





6.5 Other polymers [i](#)

There are no such residues in this entry.