



Full wwPDB X-ray Structure Validation Report ⓘ

May 26, 2020 – 04:49 pm BST

PDB ID : 6P2B
Title : Tethered PXR-LBD/SRC-1p bound to Garcinoic Acid
Authors : Walton, W.G.; Pellock, S.J.; Redinbo, M.R.
Deposited on : 2019-05-21
Resolution : 2.30 Å(reported)

This is a Full wwPDB X-ray Structure Validation Report for a publicly released PDB entry.

We welcome your comments at validation@mail.wwpdb.org

A user guide is available at

<https://www.wwpdb.org/validation/2017/XrayValidationReportHelp>

with specific help available everywhere you see the ⓘ symbol.

The following versions of software and data (see [references ⓘ](#)) were used in the production of this report:

MolProbity : 4.02b-467
Mogul : 1.8.5 (274361), CSD as541be (2020)
Xtriage (Phenix) : 1.13
EDS : 2.11
buster-report : 1.1.7 (2018)
Percentile statistics : 20191225.v01 (using entries in the PDB archive December 25th 2019)
Refmac : 5.8.0158
CCP4 : 7.0.044 (Gargrove)
Ideal geometry (proteins) : Engh & Huber (2001)
Ideal geometry (DNA, RNA) : Parkinson et al. (1996)
Validation Pipeline (wwPDB-VP) : 2.11

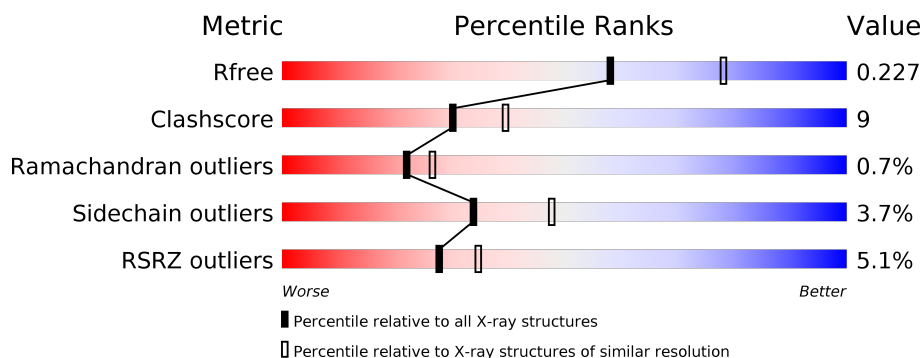
1 Overall quality at a glance

The following experimental techniques were used to determine the structure:

X-RAY DIFFRACTION

The reported resolution of this entry is 2.30 Å.

Percentile scores (ranging between 0-100) for global validation metrics of the entry are shown in the following graphic. The table shows the number of entries on which the scores are based.



Metric	Whole archive (#Entries)	Similar resolution (#Entries, resolution range(Å))
R_{free}	130704	5042 (2.30-2.30)
Clashscore	141614	5643 (2.30-2.30)
Ramachandran outliers	138981	5575 (2.30-2.30)
Sidechain outliers	138945	5575 (2.30-2.30)
RSRZ outliers	127900	4938 (2.30-2.30)

The table below summarises the geometric issues observed across the polymeric chains and their fit to the electron density. The red, orange, yellow and green segments on the lower bar indicate the fraction of residues that contain outliers for ≥ 3 , 2, 1 and 0 types of geometric quality criteria respectively. A grey segment represents the fraction of residues that are not modelled. The numeric value for each fraction is indicated below the corresponding segment, with a dot representing fractions $\leq 5\%$. The upper red bar (where present) indicates the fraction of residues that have poor fit to the electron density. The numeric value is given above the bar.

Mol	Chain	Length	Quality of chain
1	A	344	<div> <div>3%</div> <div> <div></div> <div>65%</div> <div>18%</div> <div>•</div> <div>16%</div> </div> </div>
1	B	344	<div> <div>5%</div> <div> <div></div> <div>63%</div> <div>18%</div> <div>•</div> <div>19%</div> </div> </div>

2 Entry composition

There are 4 unique types of molecules in this entry. The entry contains 4914 atoms, of which 18 are hydrogens and 0 are deuteriums.

In the tables below, the ZeroOcc column contains the number of atoms modelled with zero occupancy, the AltConf column contains the number of residues with at least one atom in alternate conformation and the Trace column contains the number of residues modelled with at most 2 atoms.

- Molecule 1 is a protein called Nuclear receptor subfamily 1 group I member 2.

Mol	Chain	Residues	Atoms					ZeroOcc	AltConf	Trace
1	A	289	Total	C	N	O	S	0	3	0
			2386	1533	411	423	19			
1	B	280	Total	C	N	O	S	0	2	0
			2314	1492	398	405	19			

There are 78 discrepancies between the modelled and reference sequences:

Chain	Residue	Modelled	Actual	Comment	Reference
A	119	MET	-	expression tag	UNP O75469
A	120	LYS	-	expression tag	UNP O75469
A	121	LYS	-	expression tag	UNP O75469
A	122	GLY	-	expression tag	UNP O75469
A	123	HIS	-	expression tag	UNP O75469
A	124	HIS	-	expression tag	UNP O75469
A	125	HIS	-	expression tag	UNP O75469
A	126	HIS	-	expression tag	UNP O75469
A	127	HIS	-	expression tag	UNP O75469
A	128	HIS	-	expression tag	UNP O75469
A	129	GLY	-	expression tag	UNP O75469
A	435	GLY	-	expression tag	UNP O75469
A	436	GLY	-	expression tag	UNP O75469
A	437	SER	-	expression tag	UNP O75469
A	438	GLY	-	expression tag	UNP O75469
A	439	GLY	-	expression tag	UNP O75469
A	440	SER	-	expression tag	UNP O75469
A	441	SER	-	expression tag	UNP O75469
A	442	HIS	-	expression tag	UNP O75469
A	443	SER	-	expression tag	UNP O75469
A	444	SER	-	expression tag	UNP O75469
A	445	LEU	-	expression tag	UNP O75469
A	446	THR	-	expression tag	UNP O75469
A	447	GLU	-	expression tag	UNP O75469
A	448	ARG	-	expression tag	UNP O75469

Continued on next page...

Continued from previous page...

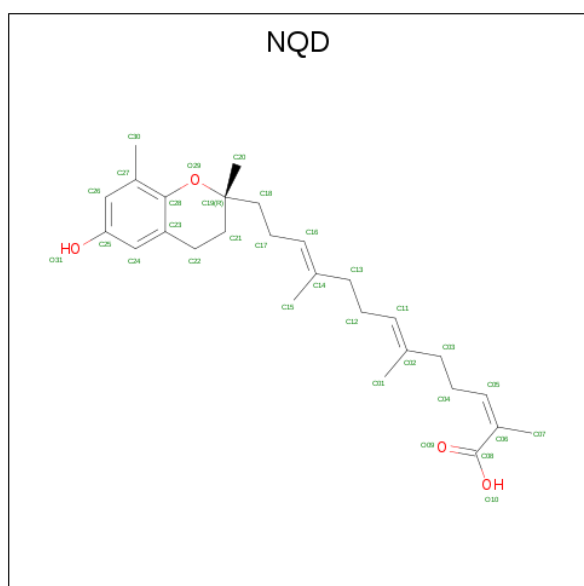
Chain	Residue	Modelled	Actual	Comment	Reference
A	449	HIS	-	expression tag	UNP O75469
A	450	LYS	-	expression tag	UNP O75469
A	451	ILE	-	expression tag	UNP O75469
A	452	LEU	-	expression tag	UNP O75469
A	453	HIS	-	expression tag	UNP O75469
A	454	ARG	-	expression tag	UNP O75469
A	455	LEU	-	expression tag	UNP O75469
A	456	LEU	-	expression tag	UNP O75469
A	457	GLN	-	expression tag	UNP O75469
A	458	GLU	-	expression tag	UNP O75469
A	459	GLY	-	expression tag	UNP O75469
A	460	SER	-	expression tag	UNP O75469
A	461	PRO	-	expression tag	UNP O75469
A	462	SER	-	expression tag	UNP O75469
B	119	MET	-	expression tag	UNP O75469
B	120	LYS	-	expression tag	UNP O75469
B	121	LYS	-	expression tag	UNP O75469
B	122	GLY	-	expression tag	UNP O75469
B	123	HIS	-	expression tag	UNP O75469
B	124	HIS	-	expression tag	UNP O75469
B	125	HIS	-	expression tag	UNP O75469
B	126	HIS	-	expression tag	UNP O75469
B	127	HIS	-	expression tag	UNP O75469
B	128	HIS	-	expression tag	UNP O75469
B	129	GLY	-	expression tag	UNP O75469
B	435	GLY	-	expression tag	UNP O75469
B	436	GLY	-	expression tag	UNP O75469
B	437	SER	-	expression tag	UNP O75469
B	438	GLY	-	expression tag	UNP O75469
B	439	GLY	-	expression tag	UNP O75469
B	440	SER	-	expression tag	UNP O75469
B	441	SER	-	expression tag	UNP O75469
B	442	HIS	-	expression tag	UNP O75469
B	443	SER	-	expression tag	UNP O75469
B	444	SER	-	expression tag	UNP O75469
B	445	LEU	-	expression tag	UNP O75469
B	446	THR	-	expression tag	UNP O75469
B	447	GLU	-	expression tag	UNP O75469
B	448	ARG	-	expression tag	UNP O75469
B	449	HIS	-	expression tag	UNP O75469
B	450	LYS	-	expression tag	UNP O75469
B	451	ILE	-	expression tag	UNP O75469

Continued on next page...

Continued from previous page...

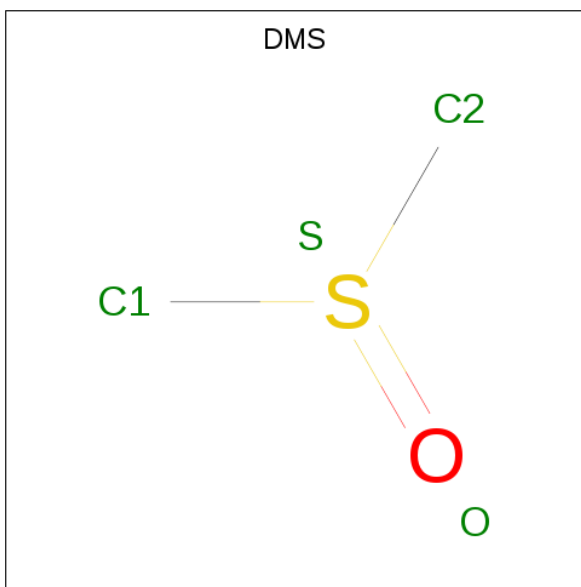
Chain	Residue	Modelled	Actual	Comment	Reference
B	452	LEU	-	expression tag	UNP O75469
B	453	HIS	-	expression tag	UNP O75469
B	454	ARG	-	expression tag	UNP O75469
B	455	LEU	-	expression tag	UNP O75469
B	456	LEU	-	expression tag	UNP O75469
B	457	GLN	-	expression tag	UNP O75469
B	458	GLU	-	expression tag	UNP O75469
B	459	GLY	-	expression tag	UNP O75469
B	460	SER	-	expression tag	UNP O75469
B	461	PRO	-	expression tag	UNP O75469
B	462	SER	-	expression tag	UNP O75469

- Molecule 2 is (2Z,6E,10E)-13-[(2R)-6-hydroxy-2,8-dimethyl-3,4-dihydro-2H-1-benzopyran-2-yl]-2,6,10-trimethyltrideca-2,6,10-trienoic acid (three-letter code: NQD) (formula: C₂₇H₃₈O₄) (labeled as "Ligand of Interest" by author).



Mol	Chain	Residues	Atoms			ZeroOcc	AltConf
2	A	1	Total	C	O	0	0
			31	27	4		
2	B	1	Total	C	O	0	0
			31	27	4		

- Molecule 3 is DIMETHYL SULFOXIDE (three-letter code: DMS) (formula: C₂H₆OS).



Mol	Chain	Residues	Atoms					ZeroOcc	AltConf
3	A	1	Total	C	H	O	S	0	0
			10	2	6	1	1		
3	B	1	Total	C	H	O	S	0	0
			10	2	6	1	1		
3	B	1	Total	C	H	O	S	0	0
			10	2	6	1	1		

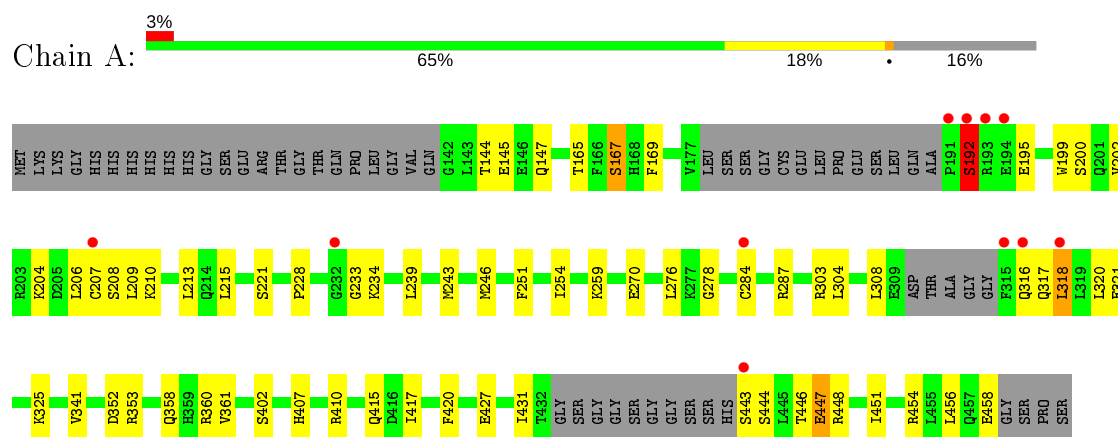
- Molecule 4 is water.

Mol	Chain	Residues	Atoms		ZeroOcc	AltConf
4	A	65	Total	O	0	0
			65	65		
4	B	57	Total	O	0	0
			57	57		

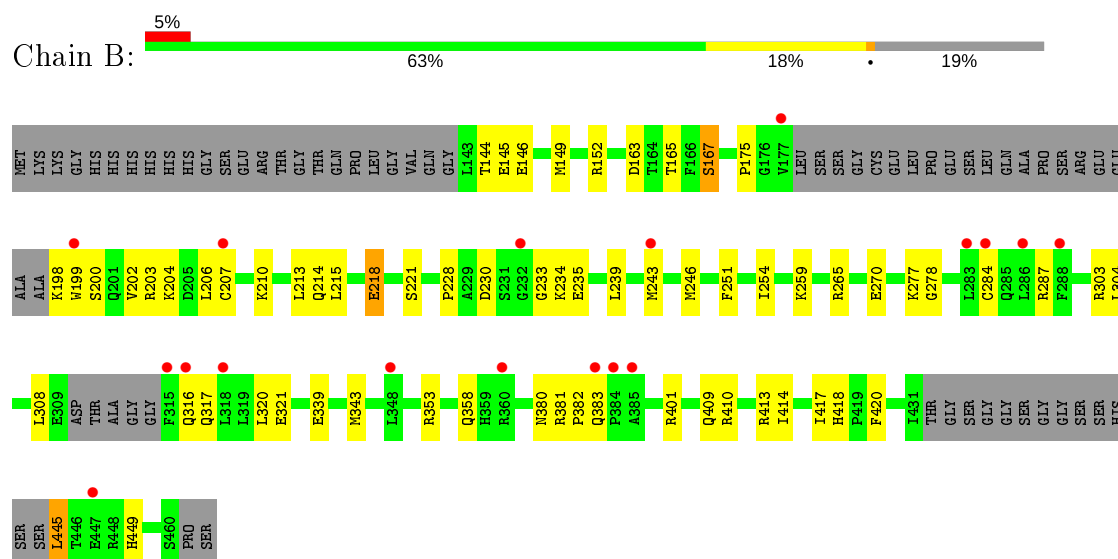
3 Residue-property plots [i](#)

These plots are drawn for all protein, RNA and DNA chains in the entry. The first graphic for a chain summarises the proportions of the various outlier classes displayed in the second graphic. The second graphic shows the sequence view annotated by issues in geometry and electron density. Residues are color-coded according to the number of geometric quality criteria for which they contain at least one outlier: green = 0, yellow = 1, orange = 2 and red = 3 or more. A red dot above a residue indicates a poor fit to the electron density ($RSRZ > 2$). Stretches of 2 or more consecutive residues without any outlier are shown as a green connector. Residues present in the sample, but not in the model, are shown in grey.

- Molecule 1: Nuclear receptor subfamily 1 group I member 2



- Molecule 1: Nuclear receptor subfamily 1 group I member 2



4 Data and refinement statistics

Property	Value	Source
Space group	P 21 21 21	Depositor
Cell constants a, b, c, α , β , γ	84.99Å 89.55Å 107.53Å 90.00° 90.00° 90.00°	Depositor
Resolution (Å)	29.63 – 2.30 29.63 – 2.30	Depositor EDS
% Data completeness (in resolution range)	98.1 (29.63-2.30) 98.1 (29.63-2.30)	Depositor EDS
R_{merge}	(Not available)	Depositor
R_{sym}	(Not available)	Depositor
$\langle I/\sigma(I) \rangle$ ¹	3.16 (at 2.31Å)	Xtriage
Refinement program	PHENIX (1.13 _2998:000)	Depositor
R, R_{free}	0.186 , 0.227 0.185 , 0.227	Depositor DCC
R_{free} test set	2000 reflections (5.49%)	wwPDB-VP
Wilson B-factor (Å ²)	46.4	Xtriage
Anisotropy	0.196	Xtriage
Bulk solvent k_{sol} (e/Å ³), B_{sol} (Å ²)	0.31 , 44.1	EDS
L-test for twinning ²	$\langle L \rangle = 0.49$, $\langle L^2 \rangle = 0.33$	Xtriage
Estimated twinning fraction	0.015 for k,h,-l	Xtriage
F_o, F_c correlation	0.95	EDS
Total number of atoms	4914	wwPDB-VP
Average B, all atoms (Å ²)	53.0	wwPDB-VP

Xtriage's analysis on translational NCS is as follows: *The largest off-origin peak in the Patterson function is 4.09% of the height of the origin peak. No significant pseudotranslation is detected.*

¹Intensities estimated from amplitudes.

²Theoretical values of $\langle |L| \rangle$, $\langle L^2 \rangle$ for acentric reflections are 0.5, 0.333 respectively for untwinned datasets, and 0.375, 0.2 for perfectly twinned datasets.

5 Model quality

5.1 Standard geometry

Bond lengths and bond angles in the following residue types are not validated in this section: DMS, NQD

The Z score for a bond length (or angle) is the number of standard deviations the observed value is removed from the expected value. A bond length (or angle) with $|Z| > 5$ is considered an outlier worth inspection. RMSZ is the root-mean-square of all Z scores of the bond lengths (or angles).

Mol	Chain	Bond lengths		Bond angles	
		RMSZ	# Z >5	RMSZ	# Z >5
1	A	0.44	0/2444	0.57	0/3287
1	B	0.42	0/2371	0.54	0/3188
All	All	0.43	0/4815	0.56	0/6475

There are no bond length outliers.

There are no bond angle outliers.

There are no chirality outliers.

There are no planarity outliers.

5.2 Too-close contacts

In the following table, the Non-H and H(model) columns list the number of non-hydrogen atoms and hydrogen atoms in the chain respectively. The H(added) column lists the number of hydrogen atoms added and optimized by MolProbity. The Clashes column lists the number of clashes within the asymmetric unit, whereas Symm-Clashes lists symmetry related clashes.

Mol	Chain	Non-H	H(model)	H(added)	Clashes	Symm-Clashes
1	A	2386	0	2400	40	0
1	B	2314	0	2340	49	0
2	A	31	0	0	2	0
2	B	31	0	0	2	0
3	A	4	6	6	0	0
3	B	8	12	12	1	0
4	A	65	0	0	2	0
4	B	57	0	0	3	0
All	All	4896	18	4758	89	0

The all-atom clashscore is defined as the number of clashes found per 1000 atoms (including hydrogen atoms). The all-atom clashscore for this structure is 9.

All (89) close contacts within the same asymmetric unit are listed below, sorted by their clash magnitude.

Atom-1	Atom-2	Interatomic distance (Å)	Clash overlap (Å)
3:B:502:DMS:H23	4:B:614:HOH:O	1.77	0.83
1:B:239:LEU:O	1:B:243:MET:HG2	1.80	0.82
1:B:207:CYS:HA	1:B:210:LYS:HE2	1.62	0.80
1:B:149:MET:HG2	1:B:152:ARG:HH22	1.50	0.76
1:B:218:GLU:HA	1:B:303:ARG:NH2	2.00	0.75
1:B:270:GLU:HG3	1:B:445:LEU:HD13	1.70	0.74
1:B:207:CYS:O	1:B:210:LYS:HD3	1.88	0.73
1:B:254:ILE:HD11	1:B:287:ARG:HD2	1.68	0.73
1:B:218:GLU:HA	1:B:303:ARG:CZ	2.18	0.73
1:B:213:LEU:HD23	1:B:214:GLN:N	2.05	0.72
1:B:200:SER:O	1:B:204:LYS:HG3	1.91	0.71
1:A:316:GLN:O	1:A:320:LEU:HD23	1.90	0.70
1:B:381:ARG:NH2	4:B:602:HOH:O	2.26	0.69
1:A:303:ARG:NH1	4:A:601:HOH:O	2.27	0.68
1:A:308:LEU:HD13	1:A:318:LEU:HD21	1.76	0.68
1:A:200:SER:O	1:A:204:LYS:HG2	1.95	0.66
1:B:206:LEU:O	1:B:210:LYS:HD2	1.95	0.66
1:A:358:GLN:HB3	1:A:361:VAL:HG22	1.77	0.66
1:A:169:PHE:O	1:A:303:ARG:NH2	2.30	0.64
1:B:213:LEU:CD2	1:B:215:LEU:HG	2.29	0.62
1:B:316:GLN:O	1:B:320:LEU:HD23	1.99	0.62
1:A:215:LEU:HD21	1:A:304:LEU:HD21	1.82	0.62
1:B:144:THR:HG22	1:B:145:GLU:N	2.15	0.62
1:A:358:GLN:HB3	1:A:361:VAL:CG2	2.29	0.61
1:B:165:THR:OG1	1:B:167:SER:OG	2.21	0.59
1:B:213:LEU:HD21	1:B:215:LEU:HG	1.87	0.56
1:B:401:ARG:HD3	4:B:653:HOH:O	2.04	0.56
1:B:202:VAL:HG21	1:B:417:ILE:HD13	1.87	0.56
1:A:145:GLU:OE1	1:A:145:GLU:HA	2.06	0.55
1:A:239:LEU:O	1:A:243:MET:HG3	2.07	0.54
1:A:213:LEU:HD21	1:A:215:LEU:HG	1.90	0.54
1:B:409:GLN:HB3	1:B:413:ARG:NH2	2.22	0.54
1:B:278:GLY:HA3	1:B:353:ARG:HD2	1.90	0.53
1:B:213:LEU:HD23	1:B:213:LEU:C	2.29	0.53
1:B:149:MET:HG2	1:B:152:ARG:NH2	2.23	0.53
1:B:215:LEU:HD23	1:B:304:LEU:HG	1.90	0.52
1:A:206:LEU:O	1:A:210:LYS:HE2	2.11	0.51
1:A:202:VAL:HG21	1:A:417:ILE:HD11	1.93	0.51
1:A:407:HIS:NE2	2:A:501:NQD:O10	2.43	0.50
1:B:198:LYS:HG2	1:B:199:TRP:N	2.27	0.50

Continued on next page...

Continued from previous page...

Atom-1	Atom-2	Interatomic distance (Å)	Clash overlap (Å)
1:B:339:GLU:O	1:B:343:MET:HG3	2.12	0.50
1:A:165:THR:OG1	1:A:167:SER:OG	2.27	0.49
1:B:259:LYS:O	1:B:265:ARG:HG3	2.12	0.49
1:B:207:CYS:HA	1:B:210:LYS:CE	2.38	0.49
1:B:202:VAL:HG13	1:B:414:ILE:HG12	1.94	0.49
2:B:501:NQD:O29	2:B:501:NQD:C16	2.60	0.49
1:B:199:TRP:O	1:B:203:ARG:HG3	2.13	0.49
1:A:246:MET:HB3	2:A:501:NQD:O31	2.12	0.49
1:A:415:GLN:HG2	1:A:431:ILE:HD13	1.94	0.48
1:A:254:ILE:HD11	1:A:287:ARG:HD2	1.94	0.48
1:B:246:MET:HB3	2:B:501:NQD:O31	2.13	0.48
1:B:382:PRO:HG2	1:B:383:GLN:NE2	2.29	0.47
1:B:144:THR:HG22	1:B:146:GLU:H	1.78	0.47
1:A:228:PRO:HD3	1:B:221:SER:HB3	1.96	0.47
1:A:209:LEU:HD21	1:A:410:ARG:HH12	1.79	0.47
1:A:444:SER:O	1:A:448:ARG:HG3	2.15	0.47
1:A:209:LEU:HD11	1:A:321:GLU:HG2	1.98	0.45
1:A:199:TRP:CZ3	1:A:233:GLY:HA2	2.51	0.45
1:B:304:LEU:N	1:B:304:LEU:HD12	2.32	0.45
1:A:144:THR:OG1	1:A:147:GLN:HG3	2.18	0.44
1:A:317:GLN:O	1:A:320:LEU:HB2	2.16	0.44
1:A:215:LEU:CD2	1:A:304:LEU:HD21	2.47	0.44
1:B:203:ARG:HD2	1:B:230:ASP:OD1	2.17	0.44
1:B:213:LEU:HD21	1:B:215:LEU:CG	2.48	0.44
1:A:215:LEU:CD2	1:A:304:LEU:CD2	2.95	0.44
1:A:325:LYS:HE2	1:A:325:LYS:HB3	1.81	0.44
1:B:270:GLU:HG3	1:B:445:LEU:CD1	2.42	0.43
1:A:325:LYS:HE2	4:A:630:HOH:O	2.18	0.43
1:A:259:LYS:HD2	1:A:456:LEU:HA	2.00	0.43
1:B:321:GLU:CD	1:B:410:ARG:HH22	2.21	0.43
1:B:316:GLN:HA	1:B:316:GLN:NE2	2.33	0.43
1:B:144:THR:HG22	1:B:145:GLU:H	1.82	0.42
1:A:192:SER:HB2	1:A:195:GLU:HB2	2.01	0.42
1:A:427:GLU:OE2	1:A:451:ILE:HG13	2.20	0.41
1:A:278:GLY:HA3	1:A:353:ARG:HD2	2.03	0.41
1:A:221:SER:HB3	1:B:228:PRO:HD3	2.02	0.41
1:B:149:MET:HG3	1:B:152:ARG:HH12	1.84	0.41
1:A:204:LYS:O	1:A:207:CYS:SG	2.78	0.41
1:A:270:GLU:OE1	1:A:446:THR:HG23	2.21	0.41
1:A:443:SER:CB	1:A:447:GLU:HG2	2.50	0.41
1:A:276:LEU:CD1	1:A:456:LEU:HD21	2.50	0.41

Continued on next page...

Continued from previous page...

Atom-1	Atom-2	Interatomic distance (Å)	Clash overlap (Å)
1:B:144:THR:CG2	1:B:145:GLU:N	2.82	0.41
1:B:233:GLY:HA3	1:B:235:GLU:OE2	2.21	0.41
1:A:234:LYS:HD3	1:A:234:LYS:HA	1.77	0.41
1:B:417:ILE:O	1:B:418:HIS:HB2	2.20	0.41
1:B:277:LYS:HD2	1:B:449:HIS:NE2	2.36	0.41
1:B:175:PRO:HG3	1:B:239:LEU:HD23	2.02	0.40
1:B:251:PHE:HD2	1:B:284[B]:CYS:HG	1.55	0.40
1:A:251:PHE:CD2	1:A:284[B]:CYS:SG	3.14	0.40

There are no symmetry-related clashes.

5.3 Torsion angles [i](#)

5.3.1 Protein backbone [i](#)

In the following table, the Percentiles column shows the percent Ramachandran outliers of the chain as a percentile score with respect to all X-ray entries followed by that with respect to entries of similar resolution.

The Analysed column shows the number of residues for which the backbone conformation was analysed, and the total number of residues.

Mol	Chain	Analysed	Favoured	Allowed	Outliers	Percentiles	
1	A	284/344 (83%)	271 (95%)	11 (4%)	2 (1%)	22	26
1	B	274/344 (80%)	260 (95%)	12 (4%)	2 (1%)	22	26
All	All	558/688 (81%)	531 (95%)	23 (4%)	4 (1%)	22	26

All (4) Ramachandran outliers are listed below:

Mol	Chain	Res	Type
1	A	192	SER
1	B	380	ASN
1	B	420	PHE
1	A	420	PHE

5.3.2 Protein sidechains [i](#)

In the following table, the Percentiles column shows the percent sidechain outliers of the chain as a percentile score with respect to all X-ray entries followed by that with respect to entries of similar resolution.

The Analysed column shows the number of residues for which the sidechain conformation was analysed, and the total number of residues.

Mol	Chain	Analysed	Rotameric	Outliers	Percentiles	
1	A	264/302 (87%)	253 (96%)	11 (4%)	30	42
1	B	257/302 (85%)	249 (97%)	8 (3%)	40	55
All	All	521/604 (86%)	502 (96%)	19 (4%)	34	49

All (19) residues with a non-rotameric sidechain are listed below:

Mol	Chain	Res	Type
1	A	167	SER
1	A	192	SER
1	A	208	SER
1	A	318	LEU
1	A	341	VAL
1	A	352	ASP
1	A	360	ARG
1	A	402	SER
1	A	447	GLU
1	A	454	ARG
1	A	458	GLU
1	B	163	ASP
1	B	167	SER
1	B	218	GLU
1	B	234	LYS
1	B	308	LEU
1	B	317	GLN
1	B	358	GLN
1	B	445	LEU

Some sidechains can be flipped to improve hydrogen bonding and reduce clashes. There are no such sidechains identified.

5.3.3 RNA ⓘ

There are no RNA molecules in this entry.

5.4 Non-standard residues in protein, DNA, RNA chains ⓘ

There are no non-standard protein/DNA/RNA residues in this entry.

5.5 Carbohydrates

There are no carbohydrates in this entry.

5.6 Ligand geometry

5 ligands are modelled in this entry.

In the following table, the Counts columns list the number of bonds (or angles) for which Mogul statistics could be retrieved, the number of bonds (or angles) that are observed in the model and the number of bonds (or angles) that are defined in the Chemical Component Dictionary. The Link column lists molecule types, if any, to which the group is linked. The Z score for a bond length (or angle) is the number of standard deviations the observed value is removed from the expected value. A bond length (or angle) with $|Z| > 2$ is considered an outlier worth inspection. RMSZ is the root-mean-square of all Z scores of the bond lengths (or angles).

Mol	Type	Chain	Res	Link	Bond lengths			Bond angles		
					Counts	RMSZ	# Z > 2	Counts	RMSZ	# Z > 2
2	NQD	A	501	-	29,32,32	1.61	2 (6%)	35,44,44	2.31	13 (37%)
3	DMS	B	503	-	3,3,3	0.65	0	3,3,3	0.45	0
3	DMS	B	502	-	3,3,3	0.68	0	3,3,3	0.41	0
2	NQD	B	501	-	29,32,32	1.63	6 (20%)	35,44,44	2.13	11 (31%)
3	DMS	A	502	-	3,3,3	0.64	0	3,3,3	0.36	0

In the following table, the Chirals column lists the number of chiral outliers, the number of chiral centers analysed, the number of these observed in the model and the number defined in the Chemical Component Dictionary. Similar counts are reported in the Torsion and Rings columns. '-' means no outliers of that kind were identified.

Mol	Type	Chain	Res	Link	Chirals	Torsions	Rings
2	NQD	A	501	-	-	4/19/34/34	0/2/2/2
2	NQD	B	501	-	-	6/19/34/34	0/2/2/2

All (8) bond length outliers are listed below:

Mol	Chain	Res	Type	Atoms	Z	Observed(Å)	Ideal(Å)
2	A	501	NQD	O29-C28	5.07	1.45	1.37
2	B	501	NQD	O29-C28	4.47	1.44	1.37
2	B	501	NQD	O29-C19	-3.82	1.41	1.46
2	A	501	NQD	O29-C19	-3.61	1.41	1.46
2	B	501	NQD	C18-C19	2.74	1.57	1.53
2	B	501	NQD	C26-C25	2.16	1.42	1.39
2	B	501	NQD	C22-C23	2.02	1.54	1.51
2	B	501	NQD	C13-C14	2.01	1.55	1.51

All (24) bond angle outliers are listed below:

Mol	Chain	Res	Type	Atoms	Z	Observed(°)	Ideal(°)
2	A	501	NQD	O29-C19-C18	-6.43	89.53	105.78
2	B	501	NQD	O29-C19-C18	-5.95	90.75	105.78
2	A	501	NQD	O29-C19-C20	5.60	118.70	105.30
2	B	501	NQD	O29-C19-C20	4.80	116.79	105.30
2	A	501	NQD	C19-O29-C28	-4.33	110.98	118.00
2	B	501	NQD	C04-C05-C06	-4.00	120.20	128.91
2	A	501	NQD	C15-C14-C13	3.78	121.62	115.27
2	B	501	NQD	C20-C19-C21	3.47	120.39	112.12
2	A	501	NQD	C20-C19-C21	3.27	119.92	112.12
2	B	501	NQD	C19-O29-C28	-3.25	112.74	118.00
2	B	501	NQD	C15-C14-C13	3.15	120.57	115.27
2	A	501	NQD	C01-C02-C03	3.01	120.33	115.27
2	A	501	NQD	C22-C23-C28	2.95	124.08	120.37
2	A	501	NQD	C07-C06-C05	-2.85	117.32	123.57
2	B	501	NQD	C01-C02-C03	2.74	119.89	115.27
2	B	501	NQD	C22-C23-C28	2.70	123.77	120.37
2	B	501	NQD	C12-C11-C02	-2.50	121.64	127.66
2	A	501	NQD	C12-C11-C02	-2.49	121.66	127.66
2	B	501	NQD	C13-C14-C16	-2.34	116.39	121.12
2	A	501	NQD	C13-C12-C11	-2.33	104.21	111.88
2	B	501	NQD	C17-C18-C19	2.24	120.30	114.02
2	A	501	NQD	C13-C14-C16	-2.13	116.81	121.12
2	A	501	NQD	C22-C23-C24	-2.12	115.66	119.91
2	A	501	NQD	C18-C17-C16	-2.05	107.48	112.41

There are no chirality outliers.

All (10) torsion outliers are listed below:

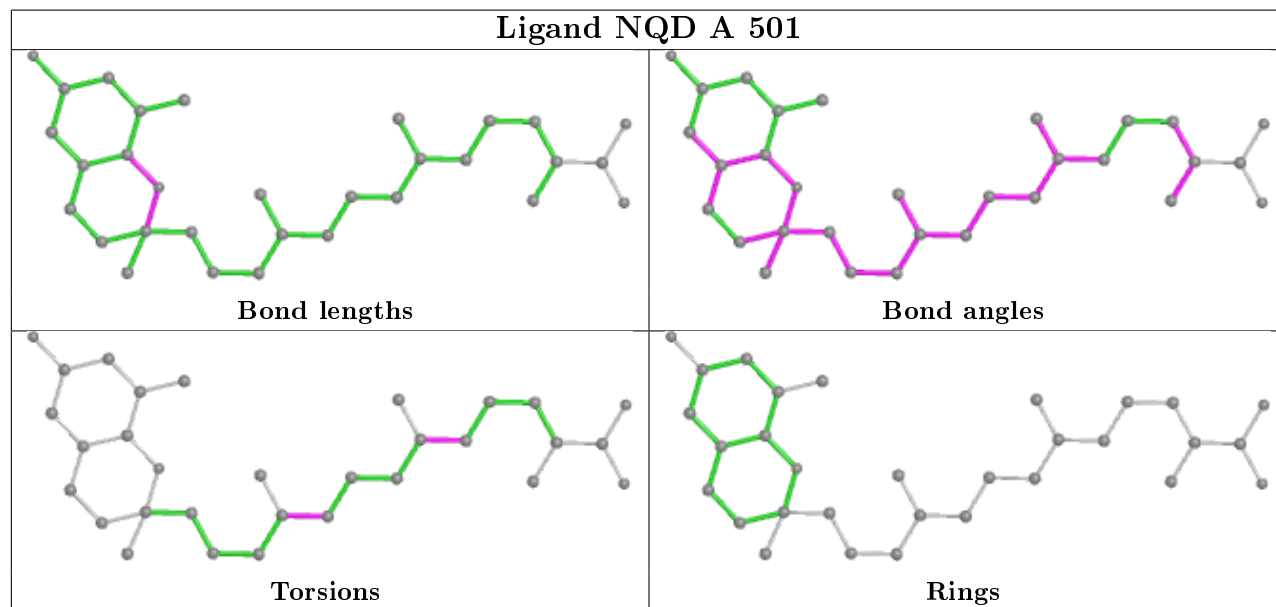
Mol	Chain	Res	Type	Atoms
2	A	501	NQD	C12-C13-C14-C15
2	B	501	NQD	C12-C13-C14-C15
2	B	501	NQD	C12-C13-C14-C16
2	A	501	NQD	C12-C13-C14-C16
2	A	501	NQD	C01-C02-C03-C04
2	B	501	NQD	C11-C02-C03-C04
2	B	501	NQD	C01-C02-C03-C04
2	A	501	NQD	C11-C02-C03-C04
2	B	501	NQD	C14-C16-C17-C18
2	B	501	NQD	C02-C11-C12-C13

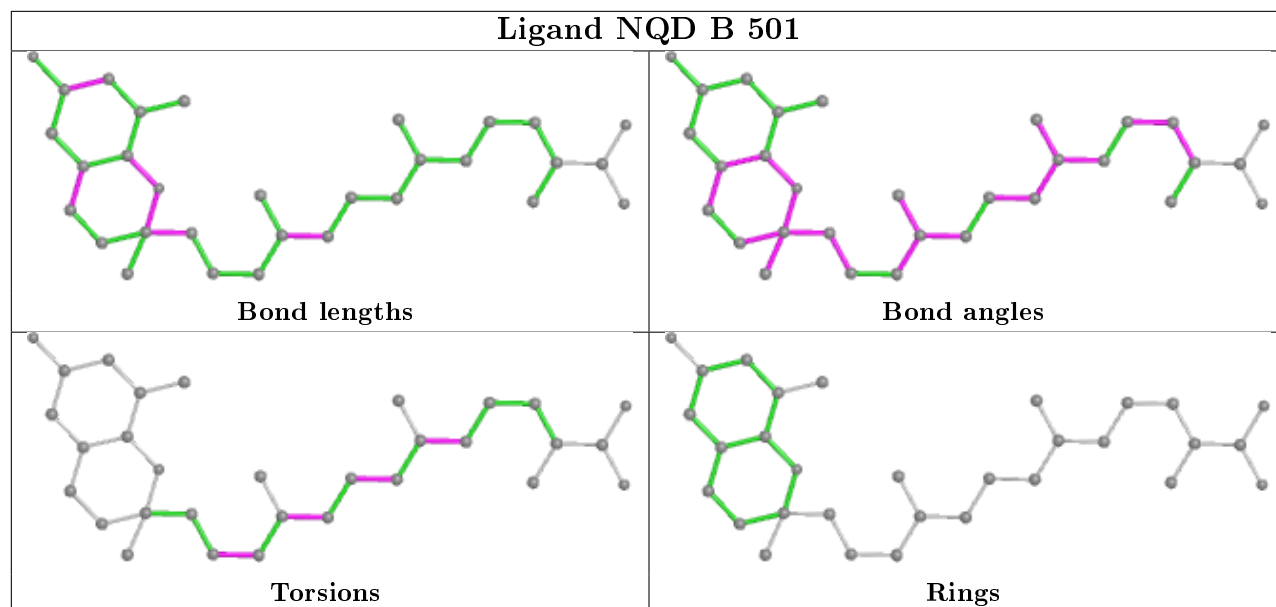
There are no ring outliers.

3 monomers are involved in 5 short contacts:

Mol	Chain	Res	Type	Clashes	Symm-Clashes
2	A	501	NQD	2	0
3	B	502	DMS	1	0
2	B	501	NQD	2	0

The following is a two-dimensional graphical depiction of Mogul quality analysis of bond lengths, bond angles, torsion angles, and ring geometry for all instances of the Ligand of Interest. In addition, ligands with molecular weight > 250 and outliers as shown on the validation Tables will also be included. For torsion angles, if less than 5% of the Mogul distribution of torsion angles is within 10 degrees of the torsion angle in question, then that torsion angle is considered an outlier. Any bond that is central to one or more torsion angles identified as an outlier by Mogul will be highlighted in the graph. For rings, the root-mean-square deviation (RMSD) between the ring in question and similar rings identified by Mogul is calculated over all ring torsion angles. If the average RMSD is greater than 60 degrees and the minimal RMSD between the ring in question and any Mogul-identified rings is also greater than 60 degrees, then that ring is considered an outlier. The outliers are highlighted in purple. The color gray indicates Mogul did not find sufficient equivalents in the CSD to analyse the geometry.





5.7 Other polymers [i](#)

There are no such residues in this entry.

5.8 Polymer linkage issues [i](#)

There are no chain breaks in this entry.

6 Fit of model and data

6.1 Protein, DNA and RNA chains

In the following table, the column labelled ‘#RSRZ> 2’ contains the number (and percentage) of RSRZ outliers, followed by percent RSRZ outliers for the chain as percentile scores relative to all X-ray entries and entries of similar resolution. The OWAB column contains the minimum, median, 95th percentile and maximum values of the occupancy-weighted average B-factor per residue. The column labelled ‘Q< 0.9’ lists the number of (and percentage) of residues with an average occupancy less than 0.9.

Mol	Chain	Analysed	<RSRZ>	#RSRZ>2	OWAB(Å ²)	Q<0.9
1	A	289/344 (84%)	0.05	11 (3%) 40 47	31, 50, 82, 102	0
1	B	280/344 (81%)	0.10	18 (6%) 19 25	31, 51, 81, 90	0
All	All	569/688 (82%)	0.07	29 (5%) 28 35	31, 51, 81, 102	0

All (29) RSRZ outliers are listed below:

Mol	Chain	Res	Type	RSRZ
1	A	194	GLU	4.2
1	B	384	PRO	3.9
1	B	385	ALA	3.8
1	A	193	ARG	3.4
1	B	199	TRP	3.3
1	B	315	PHE	3.2
1	B	177	VAL	3.2
1	A	443	SER	3.1
1	A	191	PRO	2.8
1	A	284[A]	CYS	2.7
1	B	318	LEU	2.7
1	B	316	GLN	2.6
1	A	316	GLN	2.5
1	A	207	CYS	2.5
1	B	284[A]	CYS	2.5
1	B	243	MET	2.4
1	A	232	GLY	2.4
1	A	318	LEU	2.4
1	B	283	LEU	2.4
1	A	315	PHE	2.3
1	B	232	GLY	2.2
1	B	383	GLN	2.1
1	B	286	LEU	2.1
1	B	360	ARG	2.1

Continued on next page...

Continued from previous page...

Mol	Chain	Res	Type	RSRZ
1	B	207	CYS	2.1
1	B	348	LEU	2.0
1	B	447	GLU	2.0
1	B	288	PHE	2.0
1	A	192	SER	2.0

6.2 Non-standard residues in protein, DNA, RNA chains [i](#)

There are no non-standard protein/DNA/RNA residues in this entry.

6.3 Carbohydrates [i](#)

There are no carbohydrates in this entry.

6.4 Ligands [i](#)

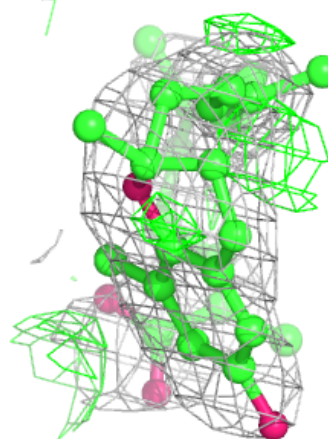
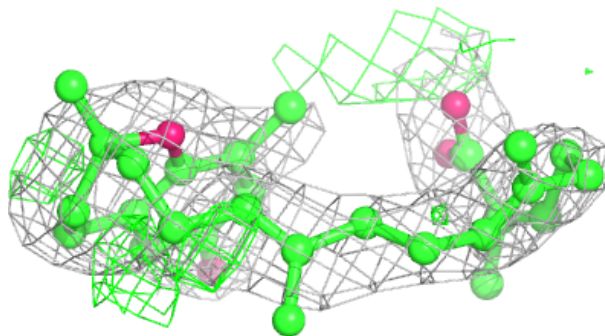
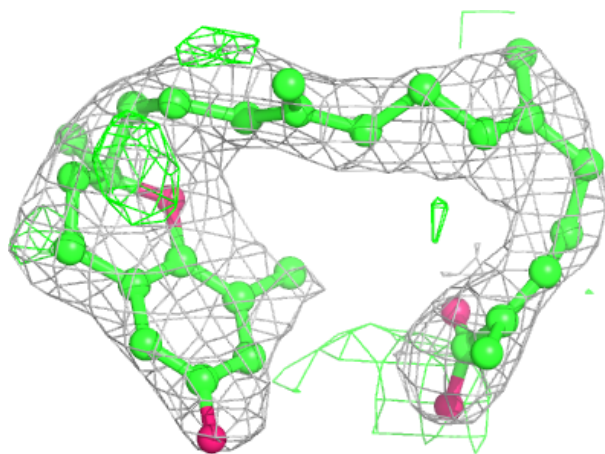
In the following table, the Atoms column lists the number of modelled atoms in the group and the number defined in the chemical component dictionary. The B-factors column lists the minimum, median, 95th percentile and maximum values of B factors of atoms in the group. The column labelled 'Q< 0.9' lists the number of atoms with occupancy less than 0.9.

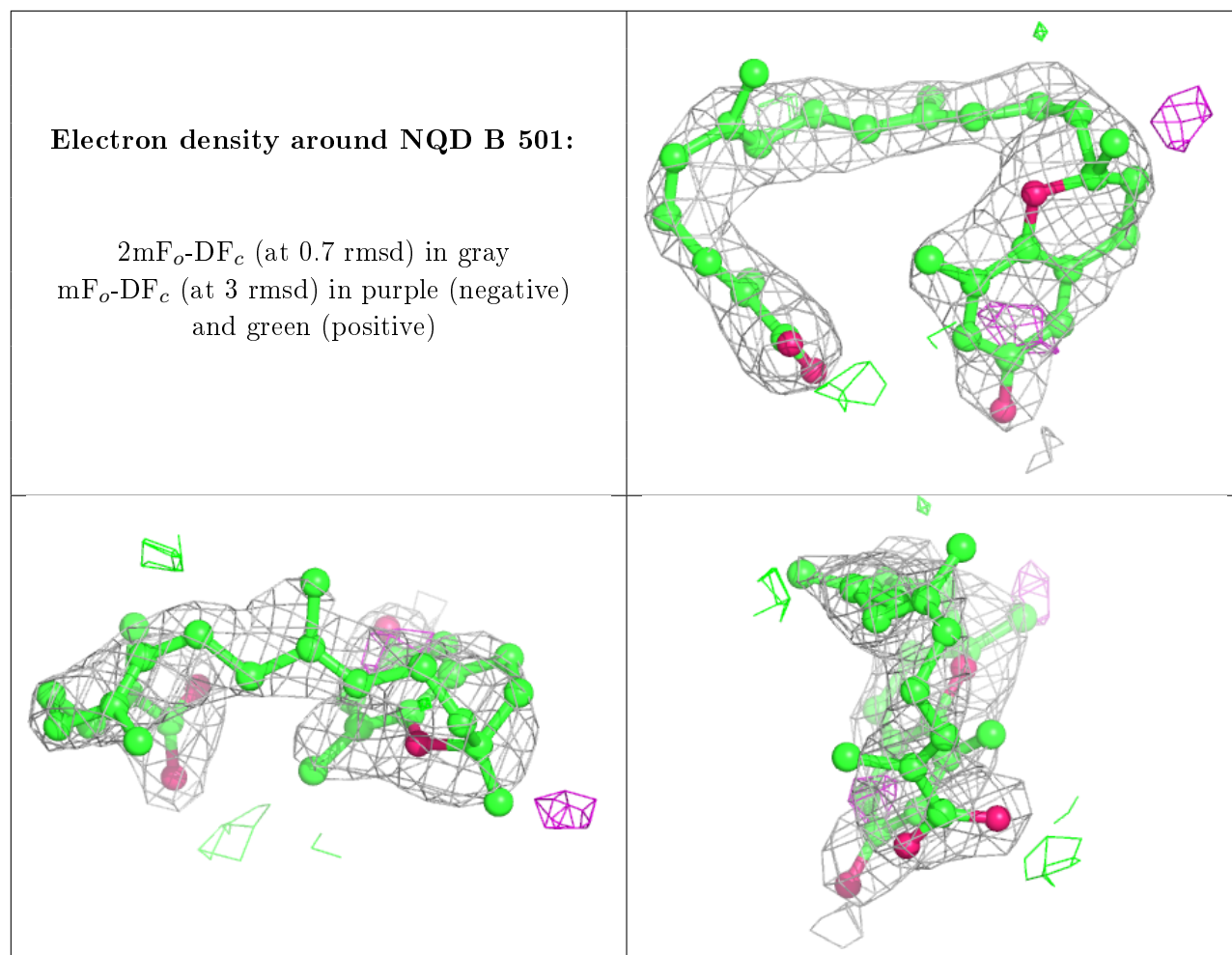
Mol	Type	Chain	Res	Atoms	RSCC	RSR	B-factors(\AA^2)	Q<0.9
2	NQD	A	501	31/31	0.90	0.27	50,57,65,67	0
2	NQD	B	501	31/31	0.92	0.23	50,59,66,69	0
3	DMS	A	502	4/4	0.92	0.14	44,63,76,76	0
3	DMS	B	502	4/4	0.95	0.17	58,70,79,79	0
3	DMS	B	503	4/4	0.97	0.19	63,80,102,102	0

The following is a graphical depiction of the model fit to experimental electron density of all instances of the Ligand of Interest. In addition, ligands with molecular weight > 250 and outliers as shown on the geometry validation Tables will also be included. Each fit is shown from different orientation to approximate a three-dimensional view.

Electron density around NQD A 501:

$2mF_o-DF_c$ (at 0.7 rmsd) in gray
 mF_o-DF_c (at 3 rmsd) in purple (negative)
and green (positive)





6.5 Other polymers ⓘ

There are no such residues in this entry.