



Full wwPDB X-ray Structure Validation Report ⓘ

May 26, 2020 – 08:55 am BST

PDB ID : 4P5Z
Title : Human EphA3 Kinase domain in complex with quinoxaline derivatives
Authors : Dong, J.; Caffisch, A.
Deposited on : 2014-03-20
Resolution : 2.00 Å(reported)

This is a Full wwPDB X-ray Structure Validation Report for a publicly released PDB entry.

We welcome your comments at validation@mail.wwpdb.org

A user guide is available at

<https://www.wwpdb.org/validation/2017/XrayValidationReportHelp>

with specific help available everywhere you see the ⓘ symbol.

The following versions of software and data (see [references ⓘ](#)) were used in the production of this report:

MolProbity : 4.02b-467
Mogul : 1.8.5 (274361), CSD as541be (2020)
Xtriage (Phenix) : 1.13
EDS : 2.11
buster-report : 1.1.7 (2018)
Percentile statistics : 20191225.v01 (using entries in the PDB archive December 25th 2019)
Refmac : 5.8.0158
CCP4 : 7.0.044 (Gargrove)
Ideal geometry (proteins) : Engh & Huber (2001)
Ideal geometry (DNA, RNA) : Parkinson et al. (1996)
Validation Pipeline (wwPDB-VP) : 2.11

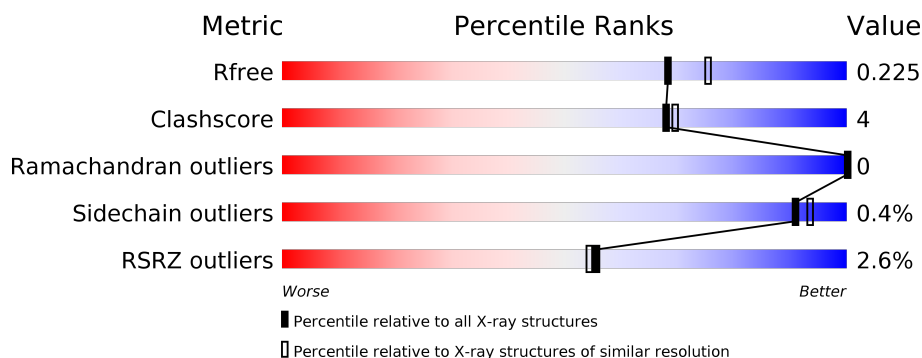
1 Overall quality at a glance

The following experimental techniques were used to determine the structure:

X-RAY DIFFRACTION

The reported resolution of this entry is 2.00 Å.

Percentile scores (ranging between 0-100) for global validation metrics of the entry are shown in the following graphic. The table shows the number of entries on which the scores are based.



Metric	Whole archive (#Entries)	Similar resolution (#Entries, resolution range(Å))
R_{free}	130704	8085 (2.00-2.00)
Clashscore	141614	9178 (2.00-2.00)
Ramachandran outliers	138981	9054 (2.00-2.00)
Sidechain outliers	138945	9053 (2.00-2.00)
RSRZ outliers	127900	7900 (2.00-2.00)

The table below summarises the geometric issues observed across the polymeric chains and their fit to the electron density. The red, orange, yellow and green segments on the lower bar indicate the fraction of residues that contain outliers for ≥ 3 , 2, 1 and 0 types of geometric quality criteria respectively. A grey segment represents the fraction of residues that are not modelled. The numeric value for each fraction is indicated below the corresponding segment, with a dot representing fractions $\leq 5\%$. The upper red bar (where present) indicates the fraction of residues that have poor fit to the electron density. The numeric value is given above the bar.

Mol	Chain	Length	Quality of chain
1	A	361	<div> <div>2%</div> <div>69%</div> <div>5%</div> <div>26%</div> </div>

The following table lists non-polymeric compounds, carbohydrate monomers and non-standard residues in protein, DNA, RNA chains that are outliers for geometric or electron-density-fit criteria:

Mol	Type	Chain	Res	Chirality	Geometry	Clashes	Electron density
2	Q7M	A	1001	-	-	X	-

2 Entry composition

There are 3 unique types of molecules in this entry. The entry contains 4392 atoms, of which 2123 are hydrogens and 0 are deuteriums.

In the tables below, the ZeroOcc column contains the number of atoms modelled with zero occupancy, the AltConf column contains the number of residues with at least one atom in alternate conformation and the Trace column contains the number of residues modelled with at most 2 atoms.

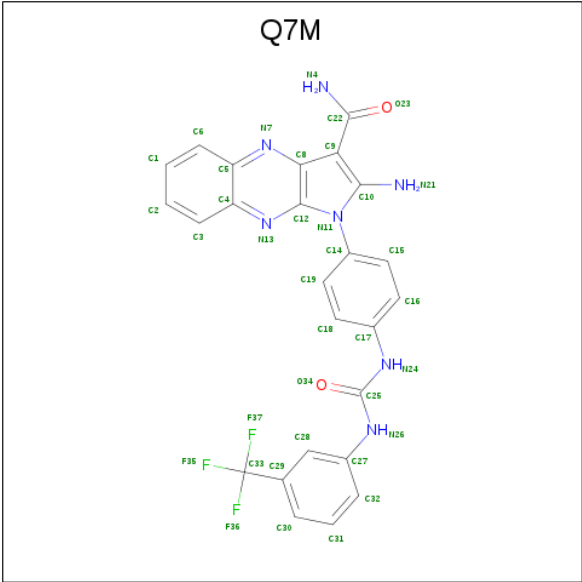
- Molecule 1 is a protein called Ephrin type-A receptor 3.

Mol	Chain	Residues	Atoms						ZeroOcc	AltConf	Trace
1	A	267	Total	C	H	N	O	S	0	0	0
			4207	1346	2105	355	387	14			

There are 20 discrepancies between the modelled and reference sequences:

Chain	Residue	Modelled	Actual	Comment	Reference
A	587	MET	-	initiating methionine	UNP P29320
A	588	GLY	-	expression tag	UNP P29320
A	589	SER	-	expression tag	UNP P29320
A	590	SER	-	expression tag	UNP P29320
A	591	HIS	-	expression tag	UNP P29320
A	592	HIS	-	expression tag	UNP P29320
A	593	HIS	-	expression tag	UNP P29320
A	594	HIS	-	expression tag	UNP P29320
A	595	HIS	-	expression tag	UNP P29320
A	596	HIS	-	expression tag	UNP P29320
A	597	SER	-	expression tag	UNP P29320
A	598	SER	-	expression tag	UNP P29320
A	599	GLY	-	expression tag	UNP P29320
A	600	LEU	-	expression tag	UNP P29320
A	601	VAL	-	expression tag	UNP P29320
A	602	PRO	-	expression tag	UNP P29320
A	603	ARG	-	expression tag	UNP P29320
A	604	GLY	-	expression tag	UNP P29320
A	605	SER	-	expression tag	UNP P29320
A	608	THR	ALA	conflict	UNP P29320

- Molecule 2 is 2-amino-1-[4-({[3-(trifluoromethyl)phenyl]carbamoyl}amino)phenyl]-1H-pyrrolo[2,3-b]quinoxaline-3-carboxamide (three-letter code: Q7M) (formula: C₂₅H₁₈F₃N₇O₂).

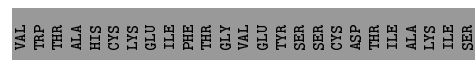


Mol	Chain	Residues	Atoms						ZeroOcc	AltConf
2	A	1	Total	C	F	H	N	O	0	0
			55	25	3	18	7	2		

- Molecule 3 is water.

Mol	Chain	Residues	Atoms		ZeroOcc	AltConf
3	A	130	Total	O	0	0
			130	130		

- Molecule 1: Ephrin type-A receptor 3



4 Data and refinement statistics

Property	Value	Source
Space group	P 1 21 1	Depositor
Cell constants a, b, c, α , β , γ	52.80 Å 38.23 Å 75.47 Å 90.00° 101.46° 90.00°	Depositor
Resolution (Å)	47.02 – 2.00 47.02 – 2.00	Depositor EDS
% Data completeness (in resolution range)	98.8 (47.02-2.00) 98.9 (47.02-2.00)	Depositor EDS
R_{merge}	(Not available)	Depositor
R_{sym}	0.07	Depositor
$\langle I/\sigma(I) \rangle$ ¹	1.24 (at 2.00 Å)	Xtriage
Refinement program	PHENIX (phenix.refine: 1.8.4_1496)	Depositor
R, R_{free}	0.178 , 0.218 0.186 , 0.225	Depositor DCC
R_{free} test set	1029 reflections (5.14%)	wwPDB-VP
Wilson B-factor (Å ²)	31.1	Xtriage
Anisotropy	0.372	Xtriage
Bulk solvent k_{sol} (e/Å ³), B_{sol} (Å ²)	0.43 , 53.0	EDS
L-test for twinning ²	$\langle L \rangle = 0.49$, $\langle L^2 \rangle = 0.32$	Xtriage
Estimated twinning fraction	No twinning to report.	Xtriage
F_o, F_c correlation	0.96	EDS
Total number of atoms	4392	wwPDB-VP
Average B, all atoms (Å ²)	42.0	wwPDB-VP

Xtriage's analysis on translational NCS is as follows: *The largest off-origin peak in the Patterson function is 7.13% of the height of the origin peak. No significant pseudotranslation is detected.*

¹Intensities estimated from amplitudes.

²Theoretical values of $\langle |L| \rangle$, $\langle L^2 \rangle$ for acentric reflections are 0.5, 0.333 respectively for untwinned datasets, and 0.375, 0.2 for perfectly twinned datasets.

5 Model quality [i](#)

5.1 Standard geometry [i](#)

Bond lengths and bond angles in the following residue types are not validated in this section: Q7M

The Z score for a bond length (or angle) is the number of standard deviations the observed value is removed from the expected value. A bond length (or angle) with $|Z| > 5$ is considered an outlier worth inspection. RMSZ is the root-mean-square of all Z scores of the bond lengths (or angles).

Mol	Chain	Bond lengths		Bond angles	
		RMSZ	$\# Z > 5$	RMSZ	$\# Z > 5$
1	A	0.72	0/2144	0.70	0/2898

There are no bond length outliers.

There are no bond angle outliers.

There are no chirality outliers.

There are no planarity outliers.

5.2 Too-close contacts [i](#)

In the following table, the Non-H and H(model) columns list the number of non-hydrogen atoms and hydrogen atoms in the chain respectively. The H(added) column lists the number of hydrogen atoms added and optimized by MolProbity. The Clashes column lists the number of clashes within the asymmetric unit, whereas Symm-Clashes lists symmetry related clashes.

Mol	Chain	Non-H	H(model)	H(added)	Clashes	Symm-Clashes
1	A	2102	2105	2109	16	1
2	A	37	18	18	9	0
3	A	130	0	0	0	0
All	All	2269	2123	2127	16	1

The all-atom clashscore is defined as the number of clashes found per 1000 atoms (including hydrogen atoms). The all-atom clashscore for this structure is 4.

All (16) close contacts within the same asymmetric unit are listed below, sorted by their clash magnitude.

Atom-1	Atom-2	Interatomic distance (Å)	Clash overlap (Å)
1:A:763:SER:OG	2:A:1001:Q7M:H16	1.76	0.85

Continued on next page...

Continued from previous page...

Atom-1	Atom-2	Interatomic distance (Å)	Clash overlap (Å)
1:A:653:LYS:HD2	2:A:1001:Q7M:C18	2.20	0.71
1:A:763:SER:HG	2:A:1001:Q7M:H16	1.60	0.65
1:A:653:LYS:CD	2:A:1001:Q7M:H18	2.27	0.65
1:A:653:LYS:HD3	2:A:1001:Q7M:H18	1.84	0.58
1:A:653:LYS:HD2	2:A:1001:Q7M:C19	2.35	0.56
1:A:753:LEU:HD11	2:A:1001:Q7M:H15	1.90	0.54
1:A:623:ILE:HD13	1:A:652:ILE:HD13	1.90	0.52
1:A:635:VAL:HG22	1:A:653:LYS:HG2	1.92	0.50
1:A:653:LYS:HD2	2:A:1001:Q7M:H18	1.88	0.50
1:A:639:ARG:NH2	1:A:647:GLU:OE1	2.48	0.46
1:A:727:LEU:HD13	1:A:814:LEU:HD13	1.98	0.46
1:A:765:PHE:CD1	1:A:765:PHE:N	2.84	0.43
1:A:612:PHE:CD1	1:A:676:GLN:HG2	2.54	0.42
1:A:653:LYS:CD	2:A:1001:Q7M:C18	2.87	0.42
1:A:683:ILE:HD12	1:A:700:GLU:HG2	2.00	0.41

All (1) symmetry-related close contacts are listed below. The label for Atom-2 includes the symmetry operator and encoded unit-cell translations to be applied.

Atom-1	Atom-2	Interatomic distance (Å)	Clash overlap (Å)
1:A:832:ASP:OD1	1:A:865:ARG:HH12 2_444	1.49	0.11

5.3 Torsion angles [i](#)

5.3.1 Protein backbone [i](#)

In the following table, the Percentiles column shows the percent Ramachandran outliers of the chain as a percentile score with respect to all X-ray entries followed by that with respect to entries of similar resolution.

The Analysed column shows the number of residues for which the backbone conformation was analysed, and the total number of residues.

Mol	Chain	Analysed	Favoured	Allowed	Outliers	Percentiles	
1	A	261/361 (72%)	255 (98%)	6 (2%)	0	100	100

There are no Ramachandran outliers to report.

5.3.2 Protein sidechains [i](#)

In the following table, the Percentiles column shows the percent sidechain outliers of the chain as a percentile score with respect to all X-ray entries followed by that with respect to entries of similar resolution.

The Analysed column shows the number of residues for which the sidechain conformation was analysed, and the total number of residues.

Mol	Chain	Analysed	Rotameric	Outliers	Percentiles	
1	A	230/313 (74%)	229 (100%)	1 (0%)	91	93

All (1) residues with a non-rotameric sidechain are listed below:

Mol	Chain	Res	Type
1	A	660	THR

Some sidechains can be flipped to improve hydrogen bonding and reduce clashes. All (1) such sidechains are listed below:

Mol	Chain	Res	Type
1	A	663	GLN

5.3.3 RNA [i](#)

There are no RNA molecules in this entry.

5.4 Non-standard residues in protein, DNA, RNA chains [i](#)

There are no non-standard protein/DNA/RNA residues in this entry.

5.5 Carbohydrates [i](#)

There are no carbohydrates in this entry.

5.6 Ligand geometry [i](#)

1 ligand is modelled in this entry.

In the following table, the Counts columns list the number of bonds (or angles) for which Mogul statistics could be retrieved, the number of bonds (or angles) that are observed in the model and the number of bonds (or angles) that are defined in the Chemical Component Dictionary. The Link column lists molecule types, if any, to which the group is linked. The Z score for a bond

length (or angle) is the number of standard deviations the observed value is removed from the expected value. A bond length (or angle) with $|Z| > 2$ is considered an outlier worth inspection. RMSZ is the root-mean-square of all Z scores of the bond lengths (or angles).

Mol	Type	Chain	Res	Link	Bond lengths			Bond angles		
					Counts	RMSZ	$\# Z > 2$	Counts	RMSZ	$\# Z > 2$
2	Q7M	A	1001	-	39,41,41	2.34	13 (33%)	48,61,61	2.89	13 (27%)

In the following table, the Chirals column lists the number of chiral outliers, the number of chiral centers analysed, the number of these observed in the model and the number defined in the Chemical Component Dictionary. Similar counts are reported in the Torsion and Rings columns. '-' means no outliers of that kind were identified.

Mol	Type	Chain	Res	Link	Chirals	Torsions	Rings
2	Q7M	A	1001	-	-	0/18/22/22	0/5/5/5

All (13) bond length outliers are listed below:

Mol	Chain	Res	Type	Atoms	Z	Observed(Å)	Ideal(Å)
2	A	1001	Q7M	C14-N11	-10.05	1.32	1.45
2	A	1001	Q7M	C9-C10	4.37	1.48	1.42
2	A	1001	Q7M	C5-C4	3.10	1.48	1.42
2	A	1001	Q7M	C8-C12	2.76	1.48	1.40
2	A	1001	Q7M	C10-N11	-2.57	1.34	1.37
2	A	1001	Q7M	F37-C33	-2.42	1.24	1.32
2	A	1001	Q7M	C17-N24	-2.36	1.36	1.41
2	A	1001	Q7M	C3-C4	-2.32	1.37	1.41
2	A	1001	Q7M	C30-C29	-2.20	1.35	1.39
2	A	1001	Q7M	C6-C5	-2.17	1.38	1.41
2	A	1001	Q7M	O34-C25	-2.07	1.19	1.23
2	A	1001	Q7M	C25-N24	-2.01	1.33	1.37
2	A	1001	Q7M	C25-N26	-2.00	1.33	1.37

All (13) bond angle outliers are listed below:

Mol	Chain	Res	Type	Atoms	Z	Observed(°)	Ideal(°)
2	A	1001	Q7M	C19-C14-N11	14.02	132.26	119.24
2	A	1001	Q7M	C19-C14-C15	-5.63	112.99	121.33
2	A	1001	Q7M	O23-C22-N4	-4.96	115.53	122.58
2	A	1001	Q7M	C15-C14-N11	-4.83	114.75	119.24
2	A	1001	Q7M	C16-C15-C14	4.38	125.45	119.07
2	A	1001	Q7M	C28-C29-C33	4.17	125.21	119.58
2	A	1001	Q7M	C18-C17-C16	-2.84	115.14	119.03
2	A	1001	Q7M	C30-C29-C33	-2.76	115.58	119.97

Continued on next page...

Continued from previous page...

Mol	Chain	Res	Type	Atoms	Z	Observed(°)	Ideal(°)
2	A	1001	Q7M	N24-C25-N26	2.43	116.73	112.49
2	A	1001	Q7M	C18-C19-C14	2.39	122.54	119.07
2	A	1001	Q7M	F35-C33-F36	2.36	114.36	105.72
2	A	1001	Q7M	C28-C27-N26	2.35	127.87	120.18
2	A	1001	Q7M	C9-C22-N4	2.18	121.69	116.85

There are no chirality outliers.

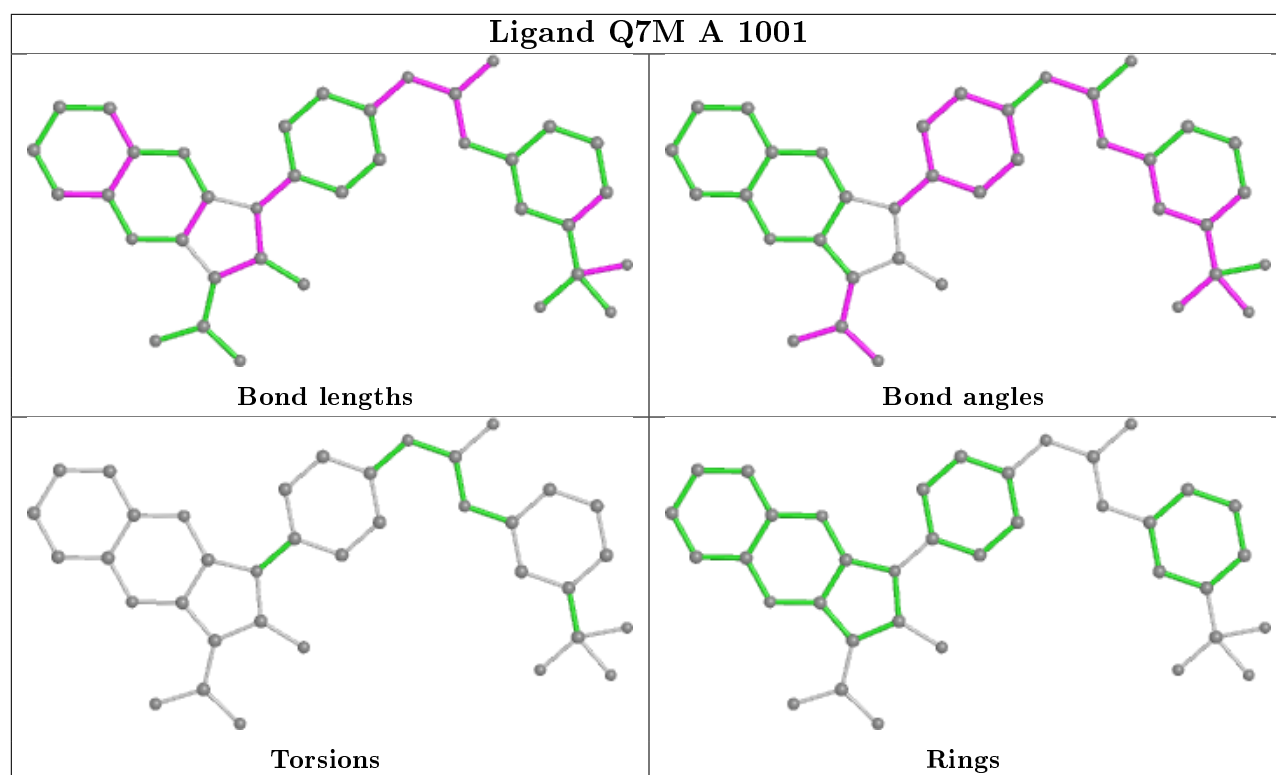
There are no torsion outliers.

There are no ring outliers.

1 monomer is involved in 9 short contacts:

Mol	Chain	Res	Type	Clashes	Symm-Clashes
2	A	1001	Q7M	9	0

The following is a two-dimensional graphical depiction of Mogul quality analysis of bond lengths, bond angles, torsion angles, and ring geometry for all instances of the Ligand of Interest. In addition, ligands with molecular weight > 250 and outliers as shown on the validation Tables will also be included. For torsion angles, if less than 5% of the Mogul distribution of torsion angles is within 10 degrees of the torsion angle in question, then that torsion angle is considered an outlier. Any bond that is central to one or more torsion angles identified as an outlier by Mogul will be highlighted in the graph. For rings, the root-mean-square deviation (RMSD) between the ring in question and similar rings identified by Mogul is calculated over all ring torsion angles. If the average RMSD is greater than 60 degrees and the minimal RMSD between the ring in question and any Mogul-identified rings is also greater than 60 degrees, then that ring is considered an outlier. The outliers are highlighted in purple. The color gray indicates Mogul did not find sufficient equivalents in the CSD to analyse the geometry.



5.7 Other polymers [i](#)

There are no such residues in this entry.

5.8 Polymer linkage issues [i](#)

There are no chain breaks in this entry.

6 Fit of model and data [i](#)

6.1 Protein, DNA and RNA chains [i](#)

In the following table, the column labelled ‘#RSRZ> 2’ contains the number (and percentage) of RSRZ outliers, followed by percent RSRZ outliers for the chain as percentile scores relative to all X-ray entries and entries of similar resolution. The OWAB column contains the minimum, median, 95th percentile and maximum values of the occupancy-weighted average B-factor per residue. The column labelled ‘Q< 0.9’ lists the number of (and percentage) of residues with an average occupancy less than 0.9.

Mol	Chain	Analysed	<RSRZ>	#RSRZ>2	OWAB(Å ²)	Q<0.9
1	A	267/361 (73%)	0.12	7 (2%) 56 54	27, 40, 71, 98	0

All (7) RSRZ outliers are listed below:

Mol	Chain	Res	Type	RSRZ
1	A	631	GLU	4.4
1	A	612	PHE	4.0
1	A	632	PHE	4.0
1	A	629	ALA	3.2
1	A	886	GLY	2.4
1	A	667	PHE	2.2
1	A	765	PHE	2.2

6.2 Non-standard residues in protein, DNA, RNA chains [i](#)

There are no non-standard protein/DNA/RNA residues in this entry.

6.3 Carbohydrates [i](#)

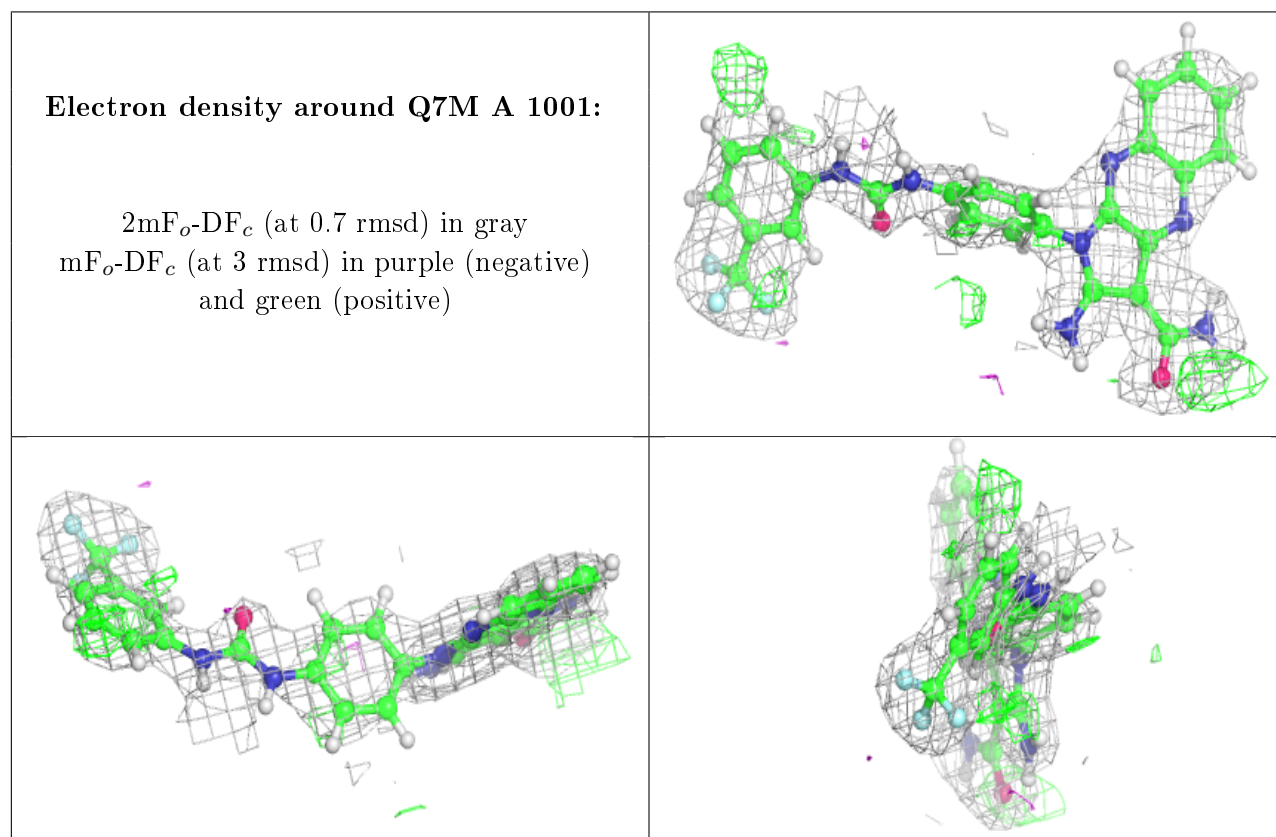
There are no carbohydrates in this entry.

6.4 Ligands [i](#)

In the following table, the Atoms column lists the number of modelled atoms in the group and the number defined in the chemical component dictionary. The B-factors column lists the minimum, median, 95th percentile and maximum values of B factors of atoms in the group. The column labelled ‘Q< 0.9’ lists the number of atoms with occupancy less than 0.9.

Mol	Type	Chain	Res	Atoms	RSCC	RSR	B-factors(Å ²)	Q<0.9
2	Q7M	A	1001	37/37	0.84	0.18	41,49,59,59	24

The following is a graphical depiction of the model fit to experimental electron density of all instances of the Ligand of Interest. In addition, ligands with molecular weight > 250 and outliers as shown on the geometry validation Tables will also be included. Each fit is shown from different orientation to approximate a three-dimensional view.



6.5 Other polymers [i](#)

There are no such residues in this entry.