



Full wwPDB X-ray Structure Validation Report ⓘ

May 22, 2020 – 11:13 am BST

PDB ID : 3P6T
Title : Crystal Structure of Cytochrome P450cam crystallized in the presence of a tethered substrate analog AdaC2-C8-Dans
Authors : Lee, Y.-T.; Wilson, R.F.; Glazer, E.C.; Goodin, D.B.
Deposited on : 2010-10-11
Resolution : 1.90 Å(reported)

This is a Full wwPDB X-ray Structure Validation Report for a publicly released PDB entry.

We welcome your comments at validation@mail.wwpdb.org

A user guide is available at

<https://www.wwpdb.org/validation/2017/XrayValidationReportHelp>

with specific help available everywhere you see the ⓘ symbol.

The following versions of software and data (see [references ⓘ](#)) were used in the production of this report:

MolProbity : 4.02b-467
Mogul : 1.8.5 (274361), CSD as541be (2020)
Xtriage (Phenix) : 1.13
EDS : 2.11
buster-report : 1.1.7 (2018)
Percentile statistics : 20191225.v01 (using entries in the PDB archive December 25th 2019)
Refmac : 5.8.0158
CCP4 : 7.0.044 (Gargrove)
Ideal geometry (proteins) : Engh & Huber (2001)
Ideal geometry (DNA, RNA) : Parkinson et al. (1996)
Validation Pipeline (wwPDB-VP) : 2.11

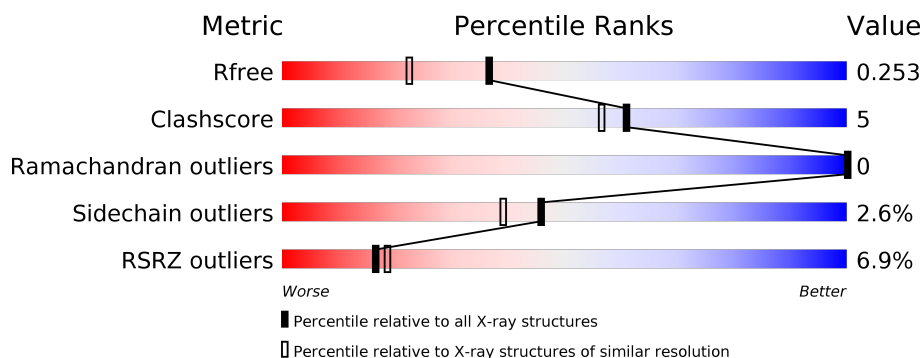
1 Overall quality at a glance

The following experimental techniques were used to determine the structure:

X-RAY DIFFRACTION

The reported resolution of this entry is 1.90 Å.

Percentile scores (ranging between 0-100) for global validation metrics of the entry are shown in the following graphic. The table shows the number of entries on which the scores are based.



Metric	Whole archive (#Entries)	Similar resolution (#Entries, resolution range(Å))
R_{free}	130704	6207 (1.90-1.90)
Clashscore	141614	6847 (1.90-1.90)
Ramachandran outliers	138981	6760 (1.90-1.90)
Sidechain outliers	138945	6760 (1.90-1.90)
RSRZ outliers	127900	6082 (1.90-1.90)

The table below summarises the geometric issues observed across the polymeric chains and their fit to the electron density. The red, orange, yellow and green segments on the lower bar indicate the fraction of residues that contain outliers for ≥ 3 , 2, 1 and 0 types of geometric quality criteria respectively. A grey segment represents the fraction of residues that are not modelled. The numeric value for each fraction is indicated below the corresponding segment, with a dot representing fractions $\leq 5\%$. The upper red bar (where present) indicates the fraction of residues that have poor fit to the electron density. The numeric value is given above the bar.

Mol	Chain	Length	Quality of chain
1	A	414	<div> <div>7%</div> <div>85%</div> <div>12%</div> <div>.</div> </div>

2 Entry composition [i](#)

There are 5 unique types of molecules in this entry. The entry contains 3489 atoms, of which 0 are hydrogens and 0 are deuteriums.

In the tables below, the ZeroOcc column contains the number of atoms modelled with zero occupancy, the AltConf column contains the number of residues with at least one atom in alternate conformation and the Trace column contains the number of residues modelled with at most 2 atoms.

- Molecule 1 is a protein called Camphor 5-monooxygenase.

Mol	Chain	Residues	Atoms					ZeroOcc	AltConf	Trace
1	A	404	Total	C	N	O	S	0	8	0
			3239	2055	563	603	18			

There is a discrepancy between the modelled and reference sequences:

Chain	Residue	Modelled	Actual	Comment	Reference
A	334	ALA	CYS	ENGINEERED MUTATION	UNP P00183

- Molecule 2 is PROTOPORPHYRIN IX CONTAINING FE (three-letter code: HEM) (formula: $C_{34}H_{32}FeN_4O_4$).

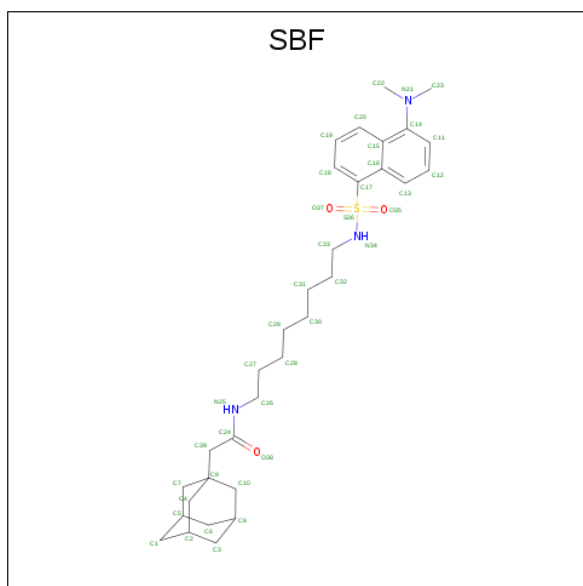


Mol	Chain	Residues	Atoms					ZeroOcc	AltConf
2	A	1	Total	C	Fe	N	O	0	0
			43	34	1	4	4		

- Molecule 3 is POTASSIUM ION (three-letter code: K) (formula: K).

Mol	Chain	Residues	Atoms	ZeroOcc	AltConf
3	A	1	Total K 1 1	0	0

- Molecule 4 is N-[8-({[5-(dimethylamino)naphthalen-1-yl]sulfonyl}amino)octyl]-2-[(3S,5S,7S)-tricyclo[3.3.1.1^{3,7}]dec-1-yl]acetamide (three-letter code: SBF) (formula: C₃₂H₄₇N₃O₃S).

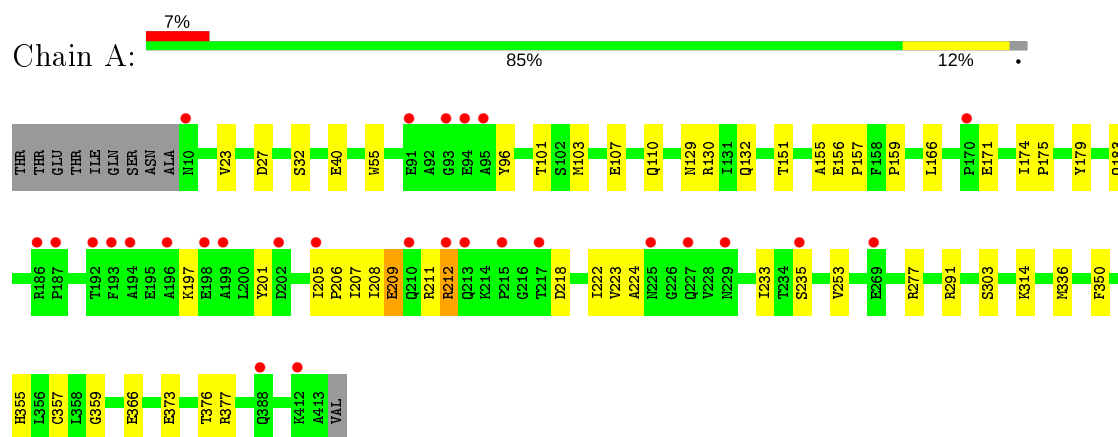


Mol	Chain	Residues	Atoms					ZeroOcc	AltConf
4	A	1	Total	C	N	O	S	0	0
			39	32	3	3	1		

- Molecule 5 is water.

Mol	Chain	Residues	Atoms	ZeroOcc	AltConf
5	A	167	Total O 167 167	0	0

- Molecule 1: Camphor 5-monooxygenase



4 Data and refinement statistics

Property	Value	Source
Space group	P 21 21 21	Depositor
Cell constants a, b, c, α , β , γ	65.42Å 74.28Å 92.17Å 90.00° 90.00° 90.00°	Depositor
Resolution (Å)	10.00 – 1.90 9.98 – 1.90	Depositor EDS
% Data completeness (in resolution range)	99.8 (10.00-1.90) 99.8 (9.98-1.90)	Depositor EDS
R_{merge}	0.07	Depositor
R_{sym}	0.07	Depositor
$\langle I/\sigma(I) \rangle$ ¹	2.57 (at 1.90Å)	Xtriage
Refinement program	REFMAC	Depositor
R, R_{free}	0.206 , 0.251 0.208 , 0.253	Depositor DCC
R_{free} test set	1782 reflections (4.99%)	wwPDB-VP
Wilson B-factor (Å ²)	26.4	Xtriage
Anisotropy	0.046	Xtriage
Bulk solvent k_{sol} (e/Å ³), B_{sol} (Å ²)	0.48 , 59.0	EDS
L-test for twinning ²	$\langle L \rangle = 0.48$, $\langle L^2 \rangle = 0.31$	Xtriage
Estimated twinning fraction	No twinning to report.	Xtriage
F_o, F_c correlation	0.94	EDS
Total number of atoms	3489	wwPDB-VP
Average B, all atoms (Å ²)	28.0	wwPDB-VP

Xtriage's analysis on translational NCS is as follows: *The largest off-origin peak in the Patterson function is 6.15% of the height of the origin peak. No significant pseudotranslation is detected.*

¹Intensities estimated from amplitudes.

²Theoretical values of $\langle |L| \rangle$, $\langle L^2 \rangle$ for acentric reflections are 0.5, 0.333 respectively for untwinned datasets, and 0.375, 0.2 for perfectly twinned datasets.

5 Model quality [i](#)

5.1 Standard geometry [i](#)

Bond lengths and bond angles in the following residue types are not validated in this section: HEM, K, SBF

The Z score for a bond length (or angle) is the number of standard deviations the observed value is removed from the expected value. A bond length (or angle) with $|Z| > 5$ is considered an outlier worth inspection. RMSZ is the root-mean-square of all Z scores of the bond lengths (or angles).

Mol	Chain	Bond lengths		Bond angles	
		RMSZ	$\# Z > 5$	RMSZ	$\# Z > 5$
1	A	0.69	0/3342	0.72	2/4540 (0.0%)

There are no bond length outliers.

All (2) bond angle outliers are listed below:

Mol	Chain	Res	Type	Atoms	Z	Observed($^{\circ}$)	Ideal($^{\circ}$)
1	A	166	LEU	CA-CB-CG	5.60	128.19	115.30
1	A	27	ASP	CB-CG-OD1	5.35	123.11	118.30

There are no chirality outliers.

There are no planarity outliers.

5.2 Too-close contacts [i](#)

In the following table, the Non-H and H(model) columns list the number of non-hydrogen atoms and hydrogen atoms in the chain respectively. The H(added) column lists the number of hydrogen atoms added and optimized by MolProbity. The Clashes column lists the number of clashes within the asymmetric unit, whereas Symm-Clashes lists symmetry related clashes.

Mol	Chain	Non-H	H(model)	H(added)	Clashes	Symm-Clashes
1	A	3239	0	3204	29	0
2	A	43	0	30	2	0
3	A	1	0	0	0	0
4	A	39	0	46	1	0
5	A	167	0	0	1	0
All	All	3489	0	3280	30	0

The all-atom clashscore is defined as the number of clashes found per 1000 atoms (including hydrogen atoms). The all-atom clashscore for this structure is 5.

All (30) close contacts within the same asymmetric unit are listed below, sorted by their clash magnitude.

Atom-1	Atom-2	Interatomic distance (Å)	Clash overlap (Å)
1:A:205:ILE:O	1:A:209:GLU:HG2	1.74	0.86
1:A:129:ASN:HB3	1:A:130:ARG:NH2	1.99	0.78
1:A:179:TYR:O	1:A:183:GLN:HG2	2.08	0.53
1:A:253:VAL:HG11	1:A:366:GLU:OE1	2.09	0.53
1:A:156[B]:GLU:HB2	1:A:157:PRO:HD3	1.89	0.53
1:A:373:GLU:OE1	1:A:377:ARG:NH2	2.43	0.52
2:A:420:HEM:HMB2	2:A:420:HEM:HBB2	1.92	0.52
1:A:155:ALA:O	1:A:159:PRO:HD2	2.09	0.51
1:A:96:TYR:OH	4:A:440:SBF:O38	2.21	0.48
1:A:218:ASP:O	1:A:222:ILE:HG12	2.14	0.48
1:A:359:GLY:HA3	2:A:420:HEM:C3C	2.48	0.48
1:A:350:PHE:HB3	1:A:357:CYS:HB3	1.97	0.47
1:A:208:ILE:O	1:A:212:ARG:CG	2.64	0.46
1:A:40:GLU:HG3	1:A:336:MET:HE2	1.98	0.46
1:A:207:ILE:O	1:A:211:ARG:HG3	2.15	0.46
1:A:205:ILE:HB	1:A:206:PRO:HD3	1.98	0.45
1:A:291:ARG:CZ	1:A:336:MET:HE1	2.49	0.43
1:A:208:ILE:O	1:A:212:ARG:HG2	2.18	0.43
1:A:223:VAL:O	1:A:233:ILE:HG21	2.19	0.43
1:A:174:ILE:HB	1:A:175:PRO:HD3	2.01	0.42
1:A:205:ILE:O	1:A:209:GLU:CG	2.58	0.42
1:A:209:GLU:HG2	1:A:209:GLU:H	1.48	0.41
1:A:212:ARG:NH2	1:A:235[B]:SER:OG	2.53	0.41
1:A:151:THR:O	1:A:156[B]:GLU:HG2	2.20	0.41
1:A:303:SER:HA	1:A:314:LYS:HB2	2.01	0.41
1:A:103:MET:O	1:A:355:HIS:CE1	2.74	0.41
1:A:197:LYS:HG2	1:A:201:TYR:CE2	2.56	0.41
1:A:212:ARG:HG2	1:A:224:ALA:HB1	2.03	0.41
1:A:23:VAL:HA	1:A:55:TRP:O	2.21	0.40
1:A:376:THR:HG23	5:A:614:HOH:O	2.21	0.40

There are no symmetry-related clashes.

5.3 Torsion angles ⓘ

5.3.1 Protein backbone ⓘ

In the following table, the Percentiles column shows the percent Ramachandran outliers of the chain as a percentile score with respect to all X-ray entries followed by that with respect to entries of similar resolution.

The Analysed column shows the number of residues for which the backbone conformation was analysed, and the total number of residues.

Mol	Chain	Analysed	Favoured	Allowed	Outliers	Percentiles	
1	A	410/414 (99%)	406 (99%)	4 (1%)	0	100	100

There are no Ramachandran outliers to report.

5.3.2 Protein sidechains ⓘ

In the following table, the Percentiles column shows the percent sidechain outliers of the chain as a percentile score with respect to all X-ray entries followed by that with respect to entries of similar resolution.

The Analysed column shows the number of residues for which the sidechain conformation was analysed, and the total number of residues.

Mol	Chain	Analysed	Rotameric	Outliers	Percentiles	
1	A	356/357 (100%)	347 (98%)	9 (2%)	47	41

All (9) residues with a non-rotameric sidechain are listed below:

Mol	Chain	Res	Type
1	A	32	SER
1	A	101	THR
1	A	107	GLU
1	A	110	GLN
1	A	132	GLN
1	A	171	GLU
1	A	209	GLU
1	A	212	ARG
1	A	277	ARG

Some sidechains can be flipped to improve hydrogen bonding and reduce clashes. All (2) such sidechains are listed below:

Mol	Chain	Res	Type
1	A	110	GLN
1	A	210	GLN

5.3.3 RNA ⓘ

There are no RNA molecules in this entry.

5.4 Non-standard residues in protein, DNA, RNA chains [i](#)

There are no non-standard protein/DNA/RNA residues in this entry.

5.5 Carbohydrates [i](#)

There are no carbohydrates in this entry.

5.6 Ligand geometry [i](#)

Of 3 ligands modelled in this entry, 1 is monoatomic - leaving 2 for Mogul analysis.

In the following table, the Counts columns list the number of bonds (or angles) for which Mogul statistics could be retrieved, the number of bonds (or angles) that are observed in the model and the number of bonds (or angles) that are defined in the Chemical Component Dictionary. The Link column lists molecule types, if any, to which the group is linked. The Z score for a bond length (or angle) is the number of standard deviations the observed value is removed from the expected value. A bond length (or angle) with $|Z| > 2$ is considered an outlier worth inspection. RMSZ is the root-mean-square of all Z scores of the bond lengths (or angles).

Mol	Type	Chain	Res	Link	Bond lengths			Bond angles		
					Counts	RMSZ	# $ Z > 2$	Counts	RMSZ	# $ Z > 2$
2	HEM	A	420	1	27,50,50	2.10	7 (25%)	17,82,82	1.81	5 (29%)
4	SBF	A	440	-	43,43,43	2.52	2 (4%)	62,62,62	2.17	10 (16%)

In the following table, the Chirals column lists the number of chiral outliers, the number of chiral centers analysed, the number of these observed in the model and the number defined in the Chemical Component Dictionary. Similar counts are reported in the Torsion and Rings columns. '-' means no outliers of that kind were identified.

Mol	Type	Chain	Res	Link	Chirals	Torsions	Rings
2	HEM	A	420	1	-	0/6/54/54	-
4	SBF	A	440	-	-	10/29/56/56	0/6/5/5

All (9) bond length outliers are listed below:

Mol	Chain	Res	Type	Atoms	Z	Observed(Å)	Ideal(Å)
4	A	440	SBF	C17-S36	-15.83	1.61	1.77
2	A	420	HEM	C3D-C2D	5.40	1.53	1.37
2	A	420	HEM	C3B-C2B	-4.30	1.34	1.40
2	A	420	HEM	C3C-C2C	-3.80	1.35	1.40
2	A	420	HEM	C3B-CAB	3.56	1.55	1.47
2	A	420	HEM	C3C-CAC	3.51	1.55	1.47

Continued on next page...

Continued from previous page...

Mol	Chain	Res	Type	Atoms	Z	Observed(Å)	Ideal(Å)
4	A	440	SBF	C18-C17	2.50	1.40	1.37
2	A	420	HEM	CAA-C2A	2.32	1.55	1.52
2	A	420	HEM	CMD-C2D	2.07	1.56	1.51

All (15) bond angle outliers are listed below:

Mol	Chain	Res	Type	Atoms	Z	Observed(°)	Ideal(°)
4	A	440	SBF	O37-S36-O35	-9.05	108.43	119.55
4	A	440	SBF	C26-N25-C24	7.43	136.63	122.84
4	A	440	SBF	C39-C24-N25	7.17	122.93	115.57
4	A	440	SBF	C27-C26-N25	-4.80	98.50	112.21
4	A	440	SBF	O38-C24-N25	-3.45	116.50	123.01
2	A	420	HEM	C1D-C2D-C3D	-3.13	104.81	107.00
2	A	420	HEM	CMC-C2C-C3C	2.96	130.22	124.68
4	A	440	SBF	C15-C14-N21	2.84	122.31	118.23
2	A	420	HEM	CAD-CBD-CGD	-2.75	108.06	112.67
4	A	440	SBF	C10-C9-C7	2.69	110.59	108.46
4	A	440	SBF	C11-C14-N21	-2.22	118.33	121.68
4	A	440	SBF	C23-N21-C14	2.21	120.70	114.12
2	A	420	HEM	CMB-C2B-C3B	2.11	128.62	124.68
4	A	440	SBF	C22-N21-C14	2.09	120.35	114.12
2	A	420	HEM	CMD-C2D-C3D	2.07	128.85	124.94

There are no chirality outliers.

All (10) torsion outliers are listed below:

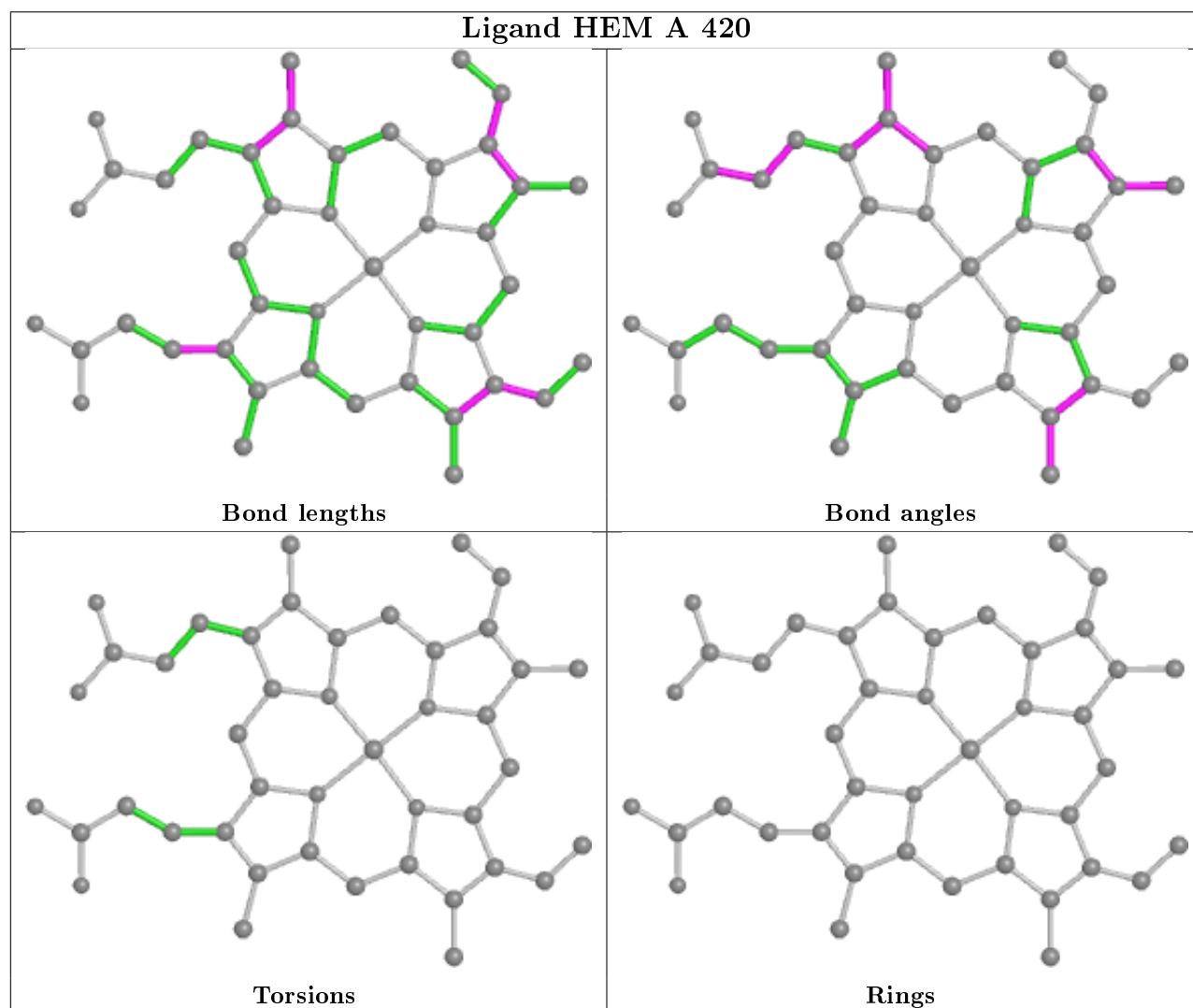
Mol	Chain	Res	Type	Atoms
4	A	440	SBF	C31-C32-C33-N34
4	A	440	SBF	C39-C24-N25-C26
4	A	440	SBF	C33-N34-S36-C17
4	A	440	SBF	O38-C24-N25-C26
4	A	440	SBF	C27-C28-C29-C30
4	A	440	SBF	C33-N34-S36-O37
4	A	440	SBF	C29-C30-C31-C32
4	A	440	SBF	C30-C31-C32-C33
4	A	440	SBF	C28-C29-C30-C31
4	A	440	SBF	N25-C26-C27-C28

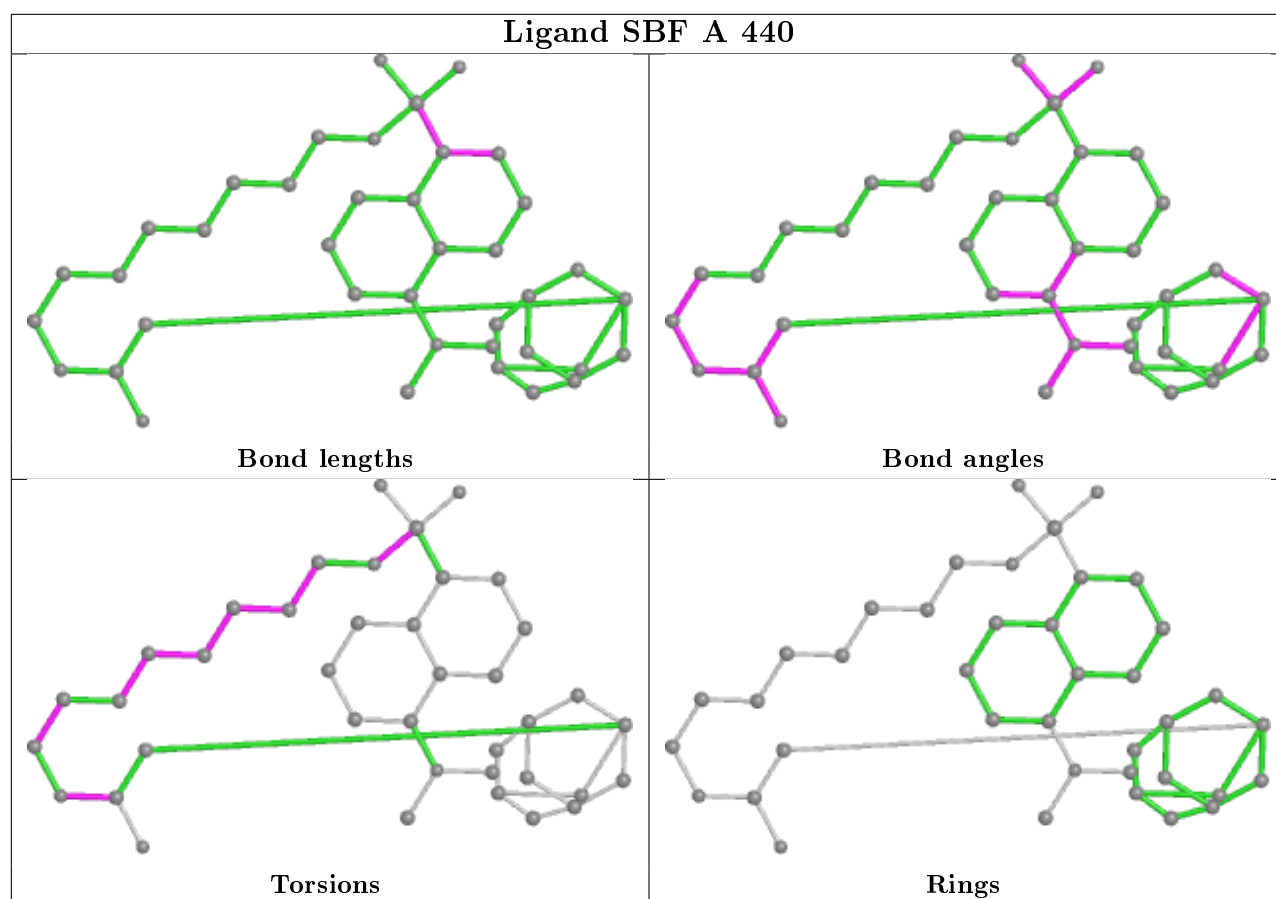
There are no ring outliers.

2 monomers are involved in 3 short contacts:

Mol	Chain	Res	Type	Clashes	Symm-Clashes
2	A	420	HEM	2	0
4	A	440	SBF	1	0

The following is a two-dimensional graphical depiction of Mogul quality analysis of bond lengths, bond angles, torsion angles, and ring geometry for all instances of the Ligand of Interest. In addition, ligands with molecular weight > 250 and outliers as shown on the validation Tables will also be included. For torsion angles, if less than 5% of the Mogul distribution of torsion angles is within 10 degrees of the torsion angle in question, then that torsion angle is considered an outlier. Any bond that is central to one or more torsion angles identified as an outlier by Mogul will be highlighted in the graph. For rings, the root-mean-square deviation (RMSD) between the ring in question and similar rings identified by Mogul is calculated over all ring torsion angles. If the average RMSD is greater than 60 degrees and the minimal RMSD between the ring in question and any Mogul-identified rings is also greater than 60 degrees, then that ring is considered an outlier. The outliers are highlighted in purple. The color gray indicates Mogul did not find sufficient equivalents in the CSD to analyse the geometry.





5.7 Other polymers [i](#)

There are no such residues in this entry.

5.8 Polymer linkage issues [i](#)

There are no chain breaks in this entry.

6 Fit of model and data

6.1 Protein, DNA and RNA chains

In the following table, the column labelled ‘#RSRZ> 2’ contains the number (and percentage) of RSRZ outliers, followed by percent RSRZ outliers for the chain as percentile scores relative to all X-ray entries and entries of similar resolution. The OWAB column contains the minimum, median, 95th percentile and maximum values of the occupancy-weighted average B-factor per residue. The column labelled ‘Q< 0.9’ lists the number of (and percentage) of residues with an average occupancy less than 0.9.

Mol	Chain	Analysed	<RSRZ>	#RSRZ>2	OWAB(Å ²)	Q<0.9
1	A	404/414 (97%)	0.26	28 (6%) 16 19	16, 27, 44, 52	0

All (28) RSRZ outliers are listed below:

Mol	Chain	Res	Type	RSRZ
1	A	210	GLN	4.2
1	A	202	ASP	4.2
1	A	10	ASN	3.8
1	A	93	GLY	3.7
1	A	193	PHE	3.7
1	A	187	PRO	3.6
1	A	217	THR	3.5
1	A	229	ASN	3.4
1	A	215	PRO	3.3
1	A	196	ALA	3.0
1	A	91[A]	GLU	2.9
1	A	198	GLU	2.9
1	A	213	GLN	2.6
1	A	186	ARG	2.5
1	A	94	GLU	2.5
1	A	212	ARG	2.5
1	A	192	THR	2.4
1	A	170	PRO	2.4
1	A	199	ALA	2.4
1	A	227	GLN	2.4
1	A	205	ILE	2.3
1	A	388	GLN	2.3
1	A	412	LYS	2.3
1	A	269	GLU	2.2
1	A	95	ALA	2.2
1	A	194	ALA	2.0
1	A	225	ASN	2.0

Continued on next page...

Continued from previous page...

Mol	Chain	Res	Type	RSRZ
1	A	235[A]	SER	2.0

6.2 Non-standard residues in protein, DNA, RNA chains [i](#)

There are no non-standard protein/DNA/RNA residues in this entry.

6.3 Carbohydrates [i](#)

There are no carbohydrates in this entry.

6.4 Ligands [i](#)

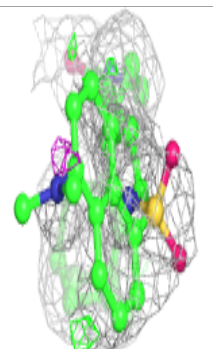
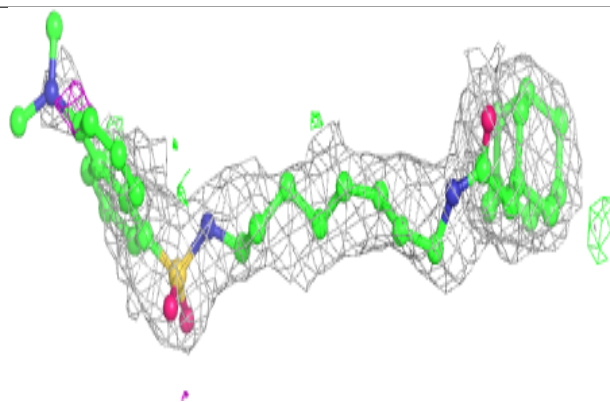
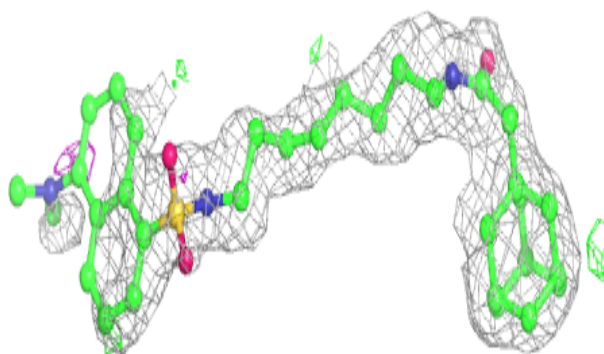
In the following table, the Atoms column lists the number of modelled atoms in the group and the number defined in the chemical component dictionary. The B-factors column lists the minimum, median, 95th percentile and maximum values of B factors of atoms in the group. The column labelled 'Q< 0.9' lists the number of atoms with occupancy less than 0.9.

Mol	Type	Chain	Res	Atoms	RSCC	RSR	B-factors(\AA^2)	Q<0.9
4	SBF	A	440	39/39	0.81	0.19	32,68,89,90	0
2	HEM	A	420	43/43	0.98	0.08	13,18,24,26	0
3	K	A	430	1/1	0.99	0.12	40,40,40,40	0

The following is a graphical depiction of the model fit to experimental electron density of all instances of the Ligand of Interest. In addition, ligands with molecular weight > 250 and outliers as shown on the geometry validation Tables will also be included. Each fit is shown from different orientation to approximate a three-dimensional view.

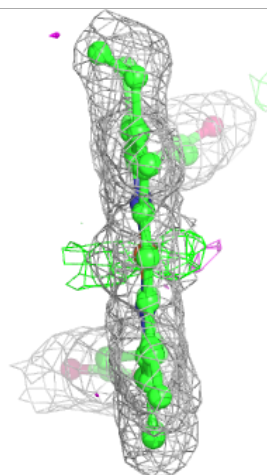
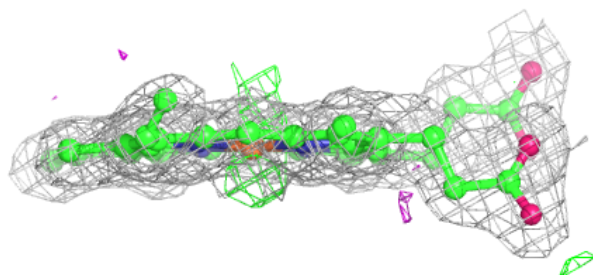
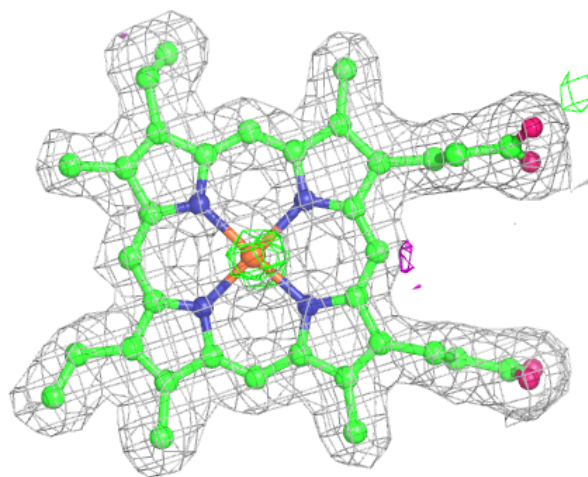
Electron density around SBF A 440:

$2mF_o-DF_c$ (at 0.7 rmsd) in gray
 mF_o-DF_c (at 3 rmsd) in purple (negative)
and green (positive)



Electron density around HEM A 420:

$2mF_o-DF_c$ (at 0.7 rmsd) in gray
 mF_o-DF_c (at 3 rmsd) in purple (negative)
and green (positive)



6.5 Other polymers [i](#)

There are no such residues in this entry.