



# wwPDB X-ray Structure Validation Summary Report ⓘ

Oct 17, 2021 – 01:18 AM EDT

PDB ID : 1P7Y  
Title : Crystal structure of the D181A variant of catalase HP11 from E. coli  
Authors : Chelikani, P.; Carpena, X.; Fita, I.; Loewen, P.C.  
Deposited on : 2003-05-06  
Resolution : 2.40 Å(reported)

This is a wwPDB X-ray Structure Validation Summary Report for a publicly released PDB entry.

We welcome your comments at [validation@mail.wwpdb.org](mailto:validation@mail.wwpdb.org)

A user guide is available at

<https://www.wwpdb.org/validation/2017/XrayValidationReportHelp>

with specific help available everywhere you see the ⓘ symbol.

---

The following versions of software and data (see [references ⓘ](#)) were used in the production of this report:

MolProbity : 4.02b-467  
Mogul : 1.8.5 (274361), CSD as541be (2020)  
Xtriage (Phenix) : 1.13  
EDS : 2.23.2  
buster-report : 1.1.7 (2018)  
Percentile statistics : 20191225.v01 (using entries in the PDB archive December 25th 2019)  
Refmac : 5.8.0158  
CCP4 : 7.0.044 (Gargrove)  
Ideal geometry (proteins) : Engh & Huber (2001)  
Ideal geometry (DNA, RNA) : Parkinson et al. (1996)  
Validation Pipeline (wwPDB-VP) : 2.23.2

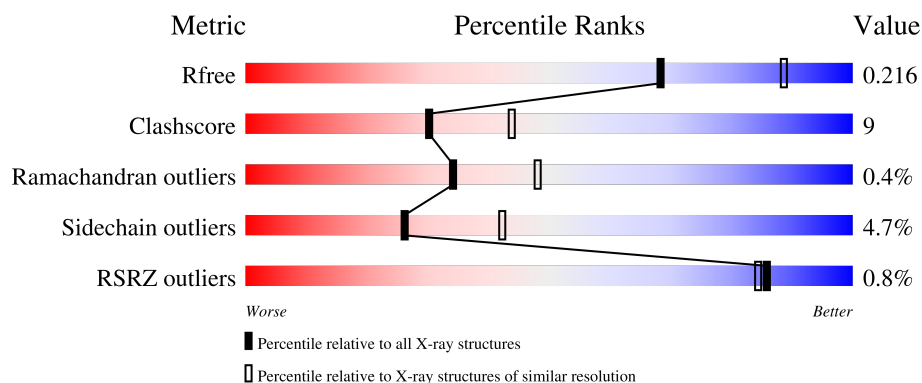
# 1 Overall quality at a glance

The following experimental techniques were used to determine the structure:

*X-RAY DIFFRACTION*

The reported resolution of this entry is 2.40 Å.

Percentile scores (ranging between 0-100) for global validation metrics of the entry are shown in the following graphic. The table shows the number of entries on which the scores are based.



Metric	Whole archive (#Entries)	Similar resolution (#Entries, resolution range(Å))
$R_{free}$	130704	3907 (2.40-2.40)
Clashscore	141614	4398 (2.40-2.40)
Ramachandran outliers	138981	4318 (2.40-2.40)
Sidechain outliers	138945	4319 (2.40-2.40)
RSRZ outliers	127900	3811 (2.40-2.40)

The table below summarises the geometric issues observed across the polymeric chains and their fit to the electron density. The red, orange, yellow and green segments of the lower bar indicate the fraction of residues that contain outliers for  $\geq 3$ , 2, 1 and 0 types of geometric quality criteria respectively. A grey segment represents the fraction of residues that are not modelled. The numeric value for each fraction is indicated below the corresponding segment, with a dot representing fractions  $\leq 5\%$ . The upper red bar (where present) indicates the fraction of residues that have poor fit to the electron density. The numeric value is given above the bar.

Mol	Chain	Length	Quality of chain
1	A	753	<div> <div style="width: 100%; height: 10px; background: linear-gradient(to right, red 1%, green 74%, yellow 20%, grey 15%);"></div> <div style="display: flex; justify-content: space-between; width: 100%;"> <span>%</span> <span>74%</span> <span>20%</span> <span>..</span> </div> </div>
1	B	753	<div> <div style="width: 100%; height: 10px; background: linear-gradient(to right, red 1%, green 68%, yellow 26%, grey 5%);"></div> <div style="display: flex; justify-content: space-between; width: 100%;"> <span>%</span> <span>68%</span> <span>26%</span> <span>...</span> </div> </div>
1	C	753	<div> <div style="width: 100%; height: 10px; background: linear-gradient(to right, green 72%, yellow 22%, grey 6%);"></div> <div style="display: flex; justify-content: space-between; width: 100%;"> <span></span> <span>72%</span> <span>22%</span> <span>..</span> </div> </div>
1	D	753	<div> <div style="width: 100%; height: 10px; background: linear-gradient(to right, red 1%, green 70%, yellow 23%, grey 6%);"></div> <div style="display: flex; justify-content: space-between; width: 100%;"> <span>%</span> <span>70%</span> <span>23%</span> <span>...</span> </div> </div>

## 2 Entry composition

There are 3 unique types of molecules in this entry. The entry contains 25927 atoms, of which 0 are hydrogens and 0 are deuteriums.

In the tables below, the ZeroOcc column contains the number of atoms modelled with zero occupancy, the AltConf column contains the number of residues with at least one atom in alternate conformation and the Trace column contains the number of residues modelled with at most 2 atoms.

- Molecule 1 is a protein called Catalase HP11.

Mol	Chain	Residues	Atoms					ZeroOcc	AltConf	Trace
1	A	727	Total	C	N	O	S	0	1	0
			5747	3648	1006	1081	12			
1	B	727	Total	C	N	O	S	0	1	0
			5747	3648	1006	1081	12			
1	C	727	Total	C	N	O	S	0	1	0
			5747	3648	1006	1081	12			
1	D	727	Total	C	N	O	S	0	1	0
			5747	3648	1006	1081	12			

There are 4 discrepancies between the modelled and reference sequences:

Chain	Residue	Modelled	Actual	Comment	Reference
A	181	ALA	ASP	engineered mutation	UNP P21179
B	181	ALA	ASP	engineered mutation	UNP P21179
C	181	ALA	ASP	engineered mutation	UNP P21179
D	181	ALA	ASP	engineered mutation	UNP P21179

- Molecule 2 is PROTOPORPHYRIN IX CONTAINING FE (three-letter code: HEM) (formula:  $C_{34}H_{32}FeN_4O_4$ ).



Mol	Chain	Residues	Atoms					ZeroOcc	AltConf
2	A	1	Total 43	C 34	Fe 1	N 4	O 4	0	0
2	B	1	Total 43	C 34	Fe 1	N 4	O 4	0	0
2	C	1	Total 43	C 34	Fe 1	N 4	O 4	0	0
2	D	1	Total 43	C 34	Fe 1	N 4	O 4	0	0

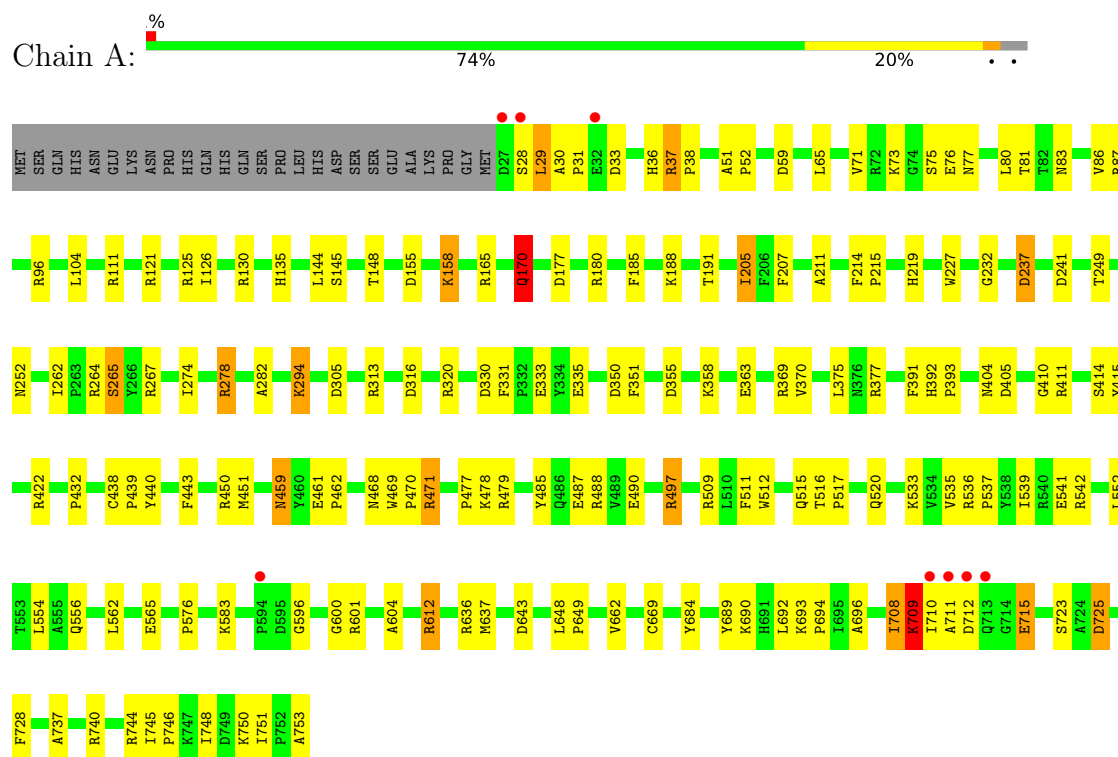
- Molecule 3 is water.

Mol	Chain	Residues	Atoms	ZeroOcc	AltConf
3	A	732	Total O 732 732	0	0
3	B	641	Total O 641 641	0	0
3	C	673	Total O 673 673	0	0
3	D	721	Total O 721 721	0	0

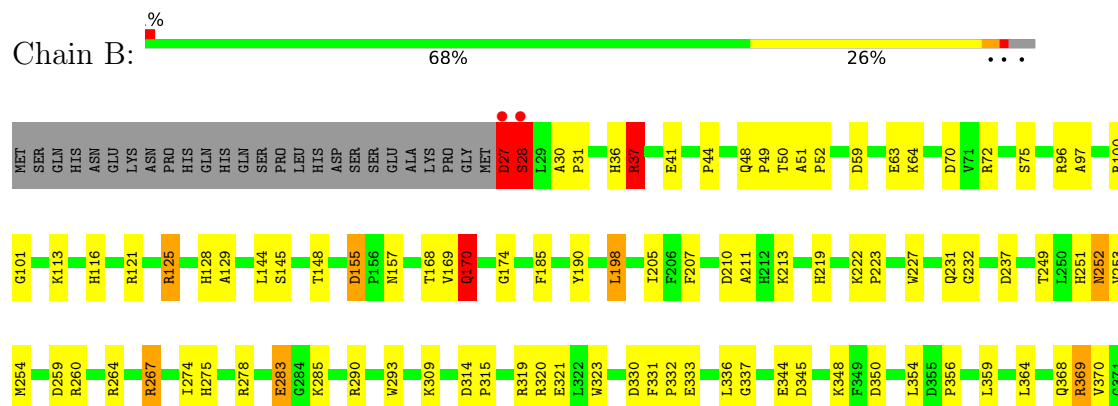
### 3 Residue-property plots

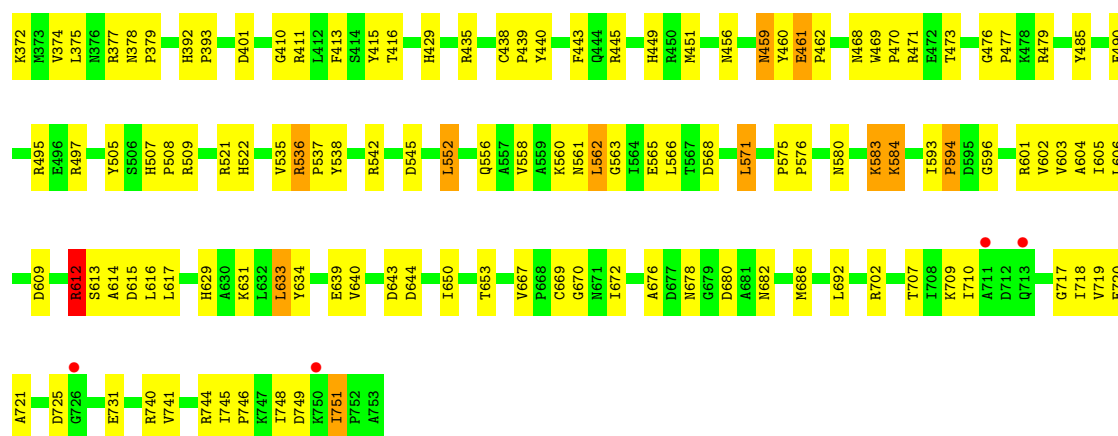
These plots are drawn for all protein, RNA, DNA and oligosaccharide chains in the entry. The first graphic for a chain summarises the proportions of the various outlier classes displayed in the second graphic. The second graphic shows the sequence view annotated by issues in geometry and electron density. Residues are color-coded according to the number of geometric quality criteria for which they contain at least one outlier: green = 0, yellow = 1, orange = 2 and red = 3 or more. A red dot above a residue indicates a poor fit to the electron density ( $RSRZ > 2$ ). Stretches of 2 or more consecutive residues without any outlier are shown as a green connector. Residues present in the sample, but not in the model, are shown in grey.

#### • Molecule 1: Catalase HP11



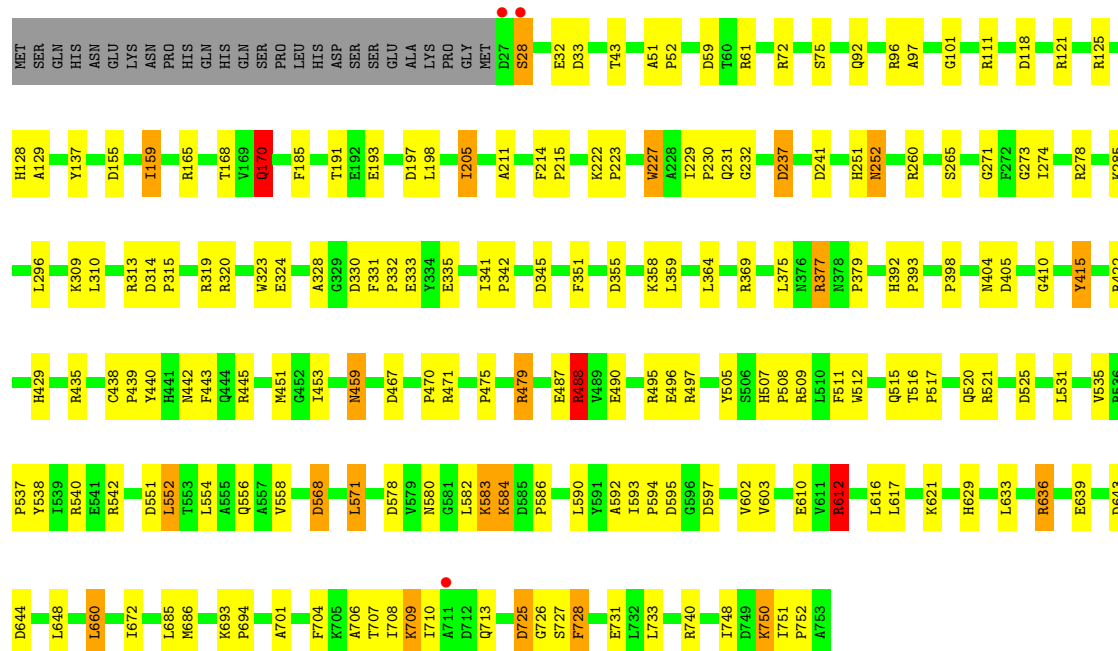
#### • Molecule 1: Catalase HP11





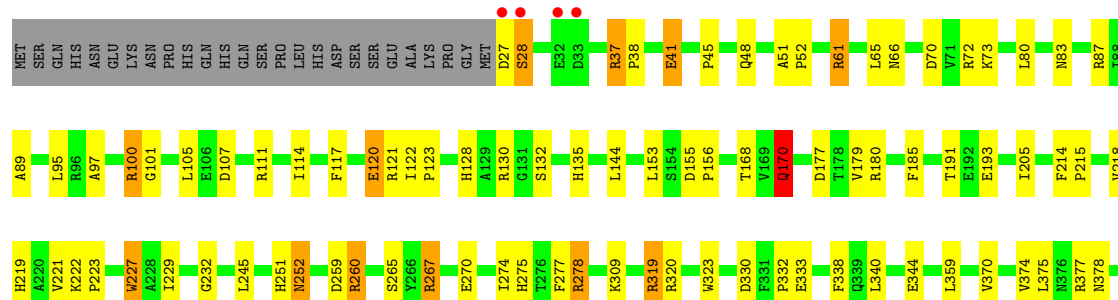
• Molecule 1: Catalase HP11

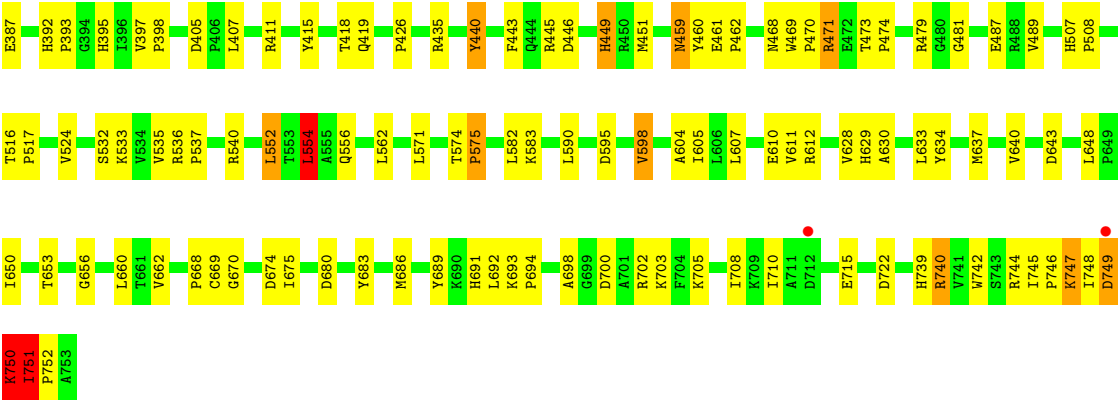
Chain C: 72% 22%



• Molecule 1: Catalase HP11

Chain D: 70% 23%





## 4 Data and refinement statistics

Property	Value	Source
Space group	P 1 21 1	Depositor
Cell constants a, b, c, $\alpha$ , $\beta$ , $\gamma$	93.29Å 132.86Å 121.75Å 90.00° 109.40° 90.00°	Depositor
Resolution (Å)	29.80 – 2.40 17.96 – 2.40	Depositor EDS
% Data completeness (in resolution range)	96.8 (29.80-2.40) 96.9 (17.96-2.40)	Depositor EDS
$R_{merge}$	0.14	Depositor
$R_{sym}$	0.14	Depositor
$\langle I/\sigma(I) \rangle$ <sup>1</sup>	2.35 (at 2.40Å)	Xtriage
Refinement program	REFMAC	Depositor
R, $R_{free}$	0.144 , 0.225 0.145 , 0.216	Depositor DCC
$R_{free}$ test set	5332 reflections (5.05%)	wwPDB-VP
Wilson B-factor (Å <sup>2</sup> )	16.0	Xtriage
Anisotropy	0.213	Xtriage
Bulk solvent $k_{sol}$ (e/Å <sup>3</sup> ), $B_{sol}$ (Å <sup>2</sup> )	0.30 , 67.4	EDS
L-test for twinning <sup>2</sup>	$\langle  L  \rangle = 0.50$ , $\langle L^2 \rangle = 0.34$	Xtriage
Estimated twinning fraction	No twinning to report.	Xtriage
$F_o, F_c$ correlation	0.96	EDS
Total number of atoms	25927	wwPDB-VP
Average B, all atoms (Å <sup>2</sup> )	26.0	wwPDB-VP

Xtriage's analysis on translational NCS is as follows: *The largest off-origin peak in the Patterson function is 3.67% of the height of the origin peak. No significant pseudotranslation is detected.*

<sup>1</sup>Intensities estimated from amplitudes.

<sup>2</sup>Theoretical values of  $\langle |L| \rangle$ ,  $\langle L^2 \rangle$  for acentric reflections are 0.5, 0.333 respectively for untwinned datasets, and 0.375, 0.2 for perfectly twinned datasets.



## 5 Model quality [i](#)

### 5.1 Standard geometry [i](#)

Bond lengths and bond angles in the following residue types are not validated in this section: HEM

The Z score for a bond length (or angle) is the number of standard deviations the observed value is removed from the expected value. A bond length (or angle) with  $|Z| > 5$  is considered an outlier worth inspection. RMSZ is the root-mean-square of all Z scores of the bond lengths (or angles).

Mol	Chain	Bond lengths		Bond angles	
		RMSZ	$\# Z  > 5$	RMSZ	$\# Z  > 5$
1	A	0.56	0/5908	1.44	49/8032 (0.6%)
1	B	0.55	0/5908	1.47	65/8032 (0.8%)
1	C	0.56	0/5908	1.52	58/8032 (0.7%)
1	D	0.56	0/5908	1.48	68/8032 (0.8%)
All	All	0.56	0/23632	1.48	240/32128 (0.7%)

Chiral center outliers are detected by calculating the chiral volume of a chiral center and verifying if the center is modelled as a planar moiety or with the opposite hand. A planarity outlier is detected by checking planarity of atoms in a peptide group, atoms in a mainchain group or atoms of a sidechain that are expected to be planar.

Mol	Chain	#Chirality outliers	#Planarity outliers
1	C	0	1

There are no bond length outliers.

The worst 5 of 240 bond angle outliers are listed below:

Mol	Chain	Res	Type	Atoms	Z	Observed(°)	Ideal(°)
1	C	612	ARG	CD-NE-CZ	35.28	173.00	123.60
1	A	497	ARG	NE-CZ-NH1	21.94	131.27	120.30
1	D	479	ARG	CD-NE-CZ	18.44	149.41	123.60
1	B	37	ARG	NE-CZ-NH2	16.17	128.38	120.30
1	D	612	ARG	CD-NE-CZ	15.64	145.50	123.60

There are no chirality outliers.

All (1) planarity outliers are listed below:

Mol	Chain	Res	Type	Group
1	C	271	GLY	Mainchain

## 5.2 Too-close contacts ⓘ

In the following table, the Non-H and H(model) columns list the number of non-hydrogen atoms and hydrogen atoms in the chain respectively. The H(added) column lists the number of hydrogen atoms added and optimized by MolProbity. The Clashes column lists the number of clashes within the asymmetric unit, whereas Symm-Clashes lists symmetry-related clashes.

Mol	Chain	Non-H	H(model)	H(added)	Clashes	Symm-Clashes
1	A	5747	0	5583	103	1
1	B	5747	0	5583	129	1
1	C	5747	0	5583	103	0
1	D	5747	0	5583	124	0
2	A	43	0	30	6	0
2	B	43	0	30	1	0
2	C	43	0	30	3	0
2	D	43	0	30	2	0
3	A	732	0	0	8	0
3	B	641	0	0	19	0
3	C	673	0	0	12	0
3	D	721	0	0	7	0
All	All	25927	0	22452	426	1

The all-atom clashscore is defined as the number of clashes found per 1000 atoms (including hydrogen atoms). The all-atom clashscore for this structure is 9.

The worst 5 of 426 close contacts within the same asymmetric unit are listed below, sorted by their clash magnitude.

Atom-1	Atom-2	Interatomic distance (Å)	Clash overlap (Å)
1:D:750:LYS:HZ2	1:D:751:ILE:H	1.16	0.91
1:C:392:HIS:ND1	1:C:415:TYR:HB2	1.97	0.80
1:A:51:ALA:HB1	1:A:52:PRO:HD2	1.66	0.76
1:C:708:ILE:HG13	1:C:710:ILE:HG12	1.66	0.75
1:C:748:ILE:O	1:C:751:ILE:HG22	1.84	0.75

All (1) symmetry-related close contacts are listed below. The label for Atom-2 includes the symmetry operator and encoded unit-cell translations to be applied.

Atom-1	Atom-2	Interatomic distance (Å)	Clash overlap (Å)
1:A:59:ASP:OD1	1:B:369:ARG:NH1[2_646]	2.14	0.06

### 5.3 Torsion angles ⓘ

#### 5.3.1 Protein backbone ⓘ

In the following table, the Percentiles column shows the percent Ramachandran outliers of the chain as a percentile score with respect to all X-ray entries followed by that with respect to entries of similar resolution.

The Analysed column shows the number of residues for which the backbone conformation was analysed, and the total number of residues.

Mol	Chain	Analysed	Favoured	Allowed	Outliers	Percentiles	
1	A	726/753 (96%)	697 (96%)	27 (4%)	2 (0%)	41	55
1	B	726/753 (96%)	691 (95%)	29 (4%)	6 (1%)	19	29
1	C	726/753 (96%)	697 (96%)	28 (4%)	1 (0%)	51	68
1	D	726/753 (96%)	694 (96%)	29 (4%)	3 (0%)	34	48
All	All	2904/3012 (96%)	2779 (96%)	113 (4%)	12 (0%)	34	48

5 of 12 Ramachandran outliers are listed below:

Mol	Chain	Res	Type
1	A	709	LYS
1	B	28	SER
1	B	613	SER
1	D	28	SER
1	D	750	LYS

#### 5.3.2 Protein sidechains ⓘ

In the following table, the Percentiles column shows the percent sidechain outliers of the chain as a percentile score with respect to all X-ray entries followed by that with respect to entries of similar resolution.

The Analysed column shows the number of residues for which the sidechain conformation was analysed, and the total number of residues.

Mol	Chain	Analysed	Rotameric	Outliers	Percentiles	
1	A	612/635 (96%)	591 (97%)	21 (3%)	37	56
1	B	612/635 (96%)	579 (95%)	33 (5%)	22	36
1	C	612/635 (96%)	573 (94%)	39 (6%)	17	28
1	D	612/635 (96%)	587 (96%)	25 (4%)	30	48
All	All	2448/2540 (96%)	2330 (95%)	118 (5%)	26	41

5 of 118 residues with a non-rotameric sidechain are listed below:

Mol	Chain	Res	Type
1	C	170[A]	GLN
1	D	582	LEU
1	C	440	TYR
1	D	554	LEU
1	D	205	ILE

Sometimes sidechains can be flipped to improve hydrogen bonding and reduce clashes. 5 of 26 such sidechains are listed below:

Mol	Chain	Res	Type
1	C	572	ASN
1	D	48	GLN
1	D	629	HIS
1	C	671	ASN
1	D	252	ASN

### 5.3.3 RNA ⓘ

There are no RNA molecules in this entry.

## 5.4 Non-standard residues in protein, DNA, RNA chains ⓘ

There are no non-standard protein/DNA/RNA residues in this entry.

## 5.5 Carbohydrates ⓘ

There are no monosaccharides in this entry.

## 5.6 Ligand geometry ⓘ

4 ligands are modelled in this entry.

In the following table, the Counts columns list the number of bonds (or angles) for which Mogul statistics could be retrieved, the number of bonds (or angles) that are observed in the model and the number of bonds (or angles) that are defined in the Chemical Component Dictionary. The Link column lists molecule types, if any, to which the group is linked. The Z score for a bond length (or angle) is the number of standard deviations the observed value is removed from the expected value. A bond length (or angle) with  $|Z| > 2$  is considered an outlier worth inspection. RMSZ is the root-mean-square of all Z scores of the bond lengths (or angles).

Mol	Type	Chain	Res	Link	Bond lengths			Bond angles		
					Counts	RMSZ	# Z  > 2	Counts	RMSZ	# Z  > 2
2	HEM	D	760	1	27,50,50	1.81	4 (14%)	17,82,82	1.91	7 (41%)
2	HEM	B	760	1	27,50,50	1.88	4 (14%)	17,82,82	2.38	7 (41%)
2	HEM	C	760	1	27,50,50	1.87	4 (14%)	17,82,82	2.18	7 (41%)
2	HEM	A	760	1	27,50,50	1.98	4 (14%)	17,82,82	1.55	4 (23%)

In the following table, the Chirals column lists the number of chiral outliers, the number of chiral centers analysed, the number of these observed in the model and the number defined in the Chemical Component Dictionary. Similar counts are reported in the Torsion and Rings columns. '-' means no outliers of that kind were identified.

Mol	Type	Chain	Res	Link	Chirals	Torsions	Rings
2	HEM	D	760	1	-	0/6/54/54	-
2	HEM	B	760	1	-	0/6/54/54	-
2	HEM	C	760	1	-	0/6/54/54	-
2	HEM	A	760	1	-	0/6/54/54	-

The worst 5 of 16 bond length outliers are listed below:

Mol	Chain	Res	Type	Atoms	Z	Observed(Å)	Ideal(Å)
2	A	760	HEM	C3B-C2B	-5.23	1.33	1.40
2	A	760	HEM	C3C-C2C	-5.12	1.33	1.40
2	B	760	HEM	C3B-C2B	-5.11	1.33	1.40
2	C	760	HEM	C3B-C2B	-5.08	1.33	1.40
2	B	760	HEM	C3C-C2C	-4.85	1.33	1.40

The worst 5 of 25 bond angle outliers are listed below:

Mol	Chain	Res	Type	Atoms	Z	Observed(°)	Ideal(°)
2	B	760	HEM	CMD-C2D-C1D	-4.81	121.07	128.46
2	C	760	HEM	CMD-C2D-C1D	-4.16	122.06	128.46
2	C	760	HEM	CMA-C3A-C4A	-4.07	122.22	128.46
2	B	760	HEM	CMD-C2D-C3D	3.77	132.05	124.94
2	B	760	HEM	CBA-CAA-C2A	3.64	119.20	112.49

There are no chirality outliers.

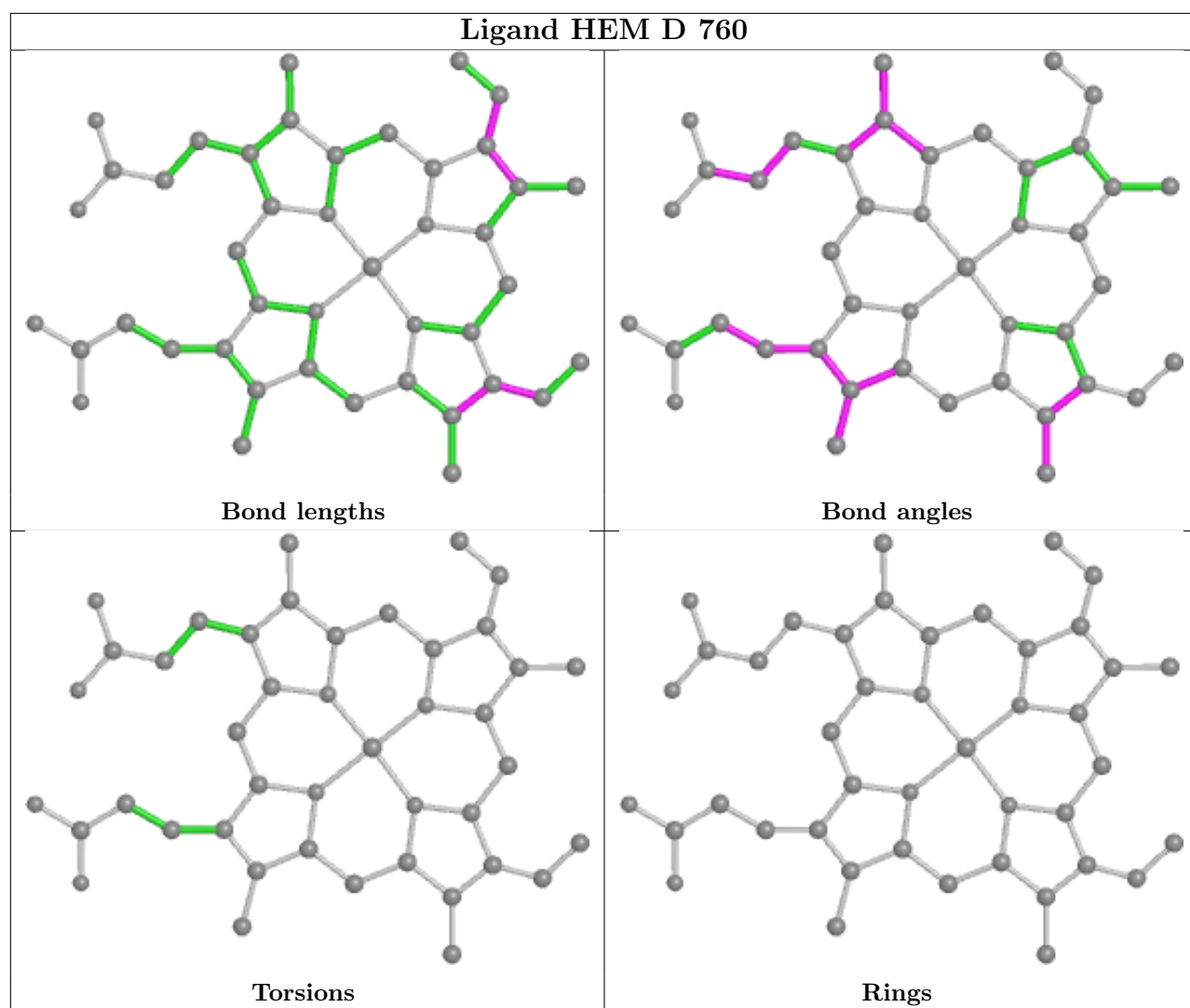
There are no torsion outliers.

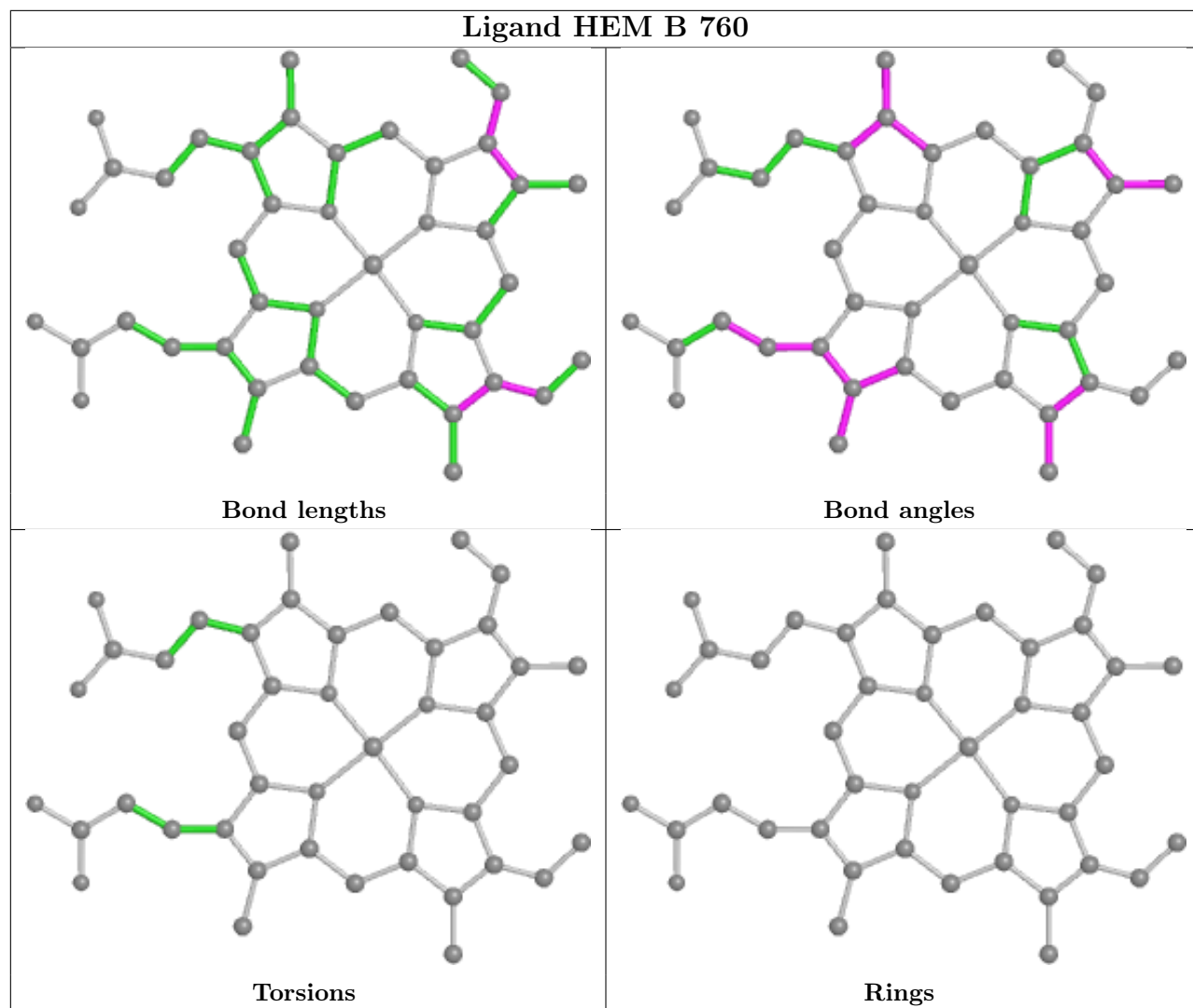
There are no ring outliers.

4 monomers are involved in 12 short contacts:

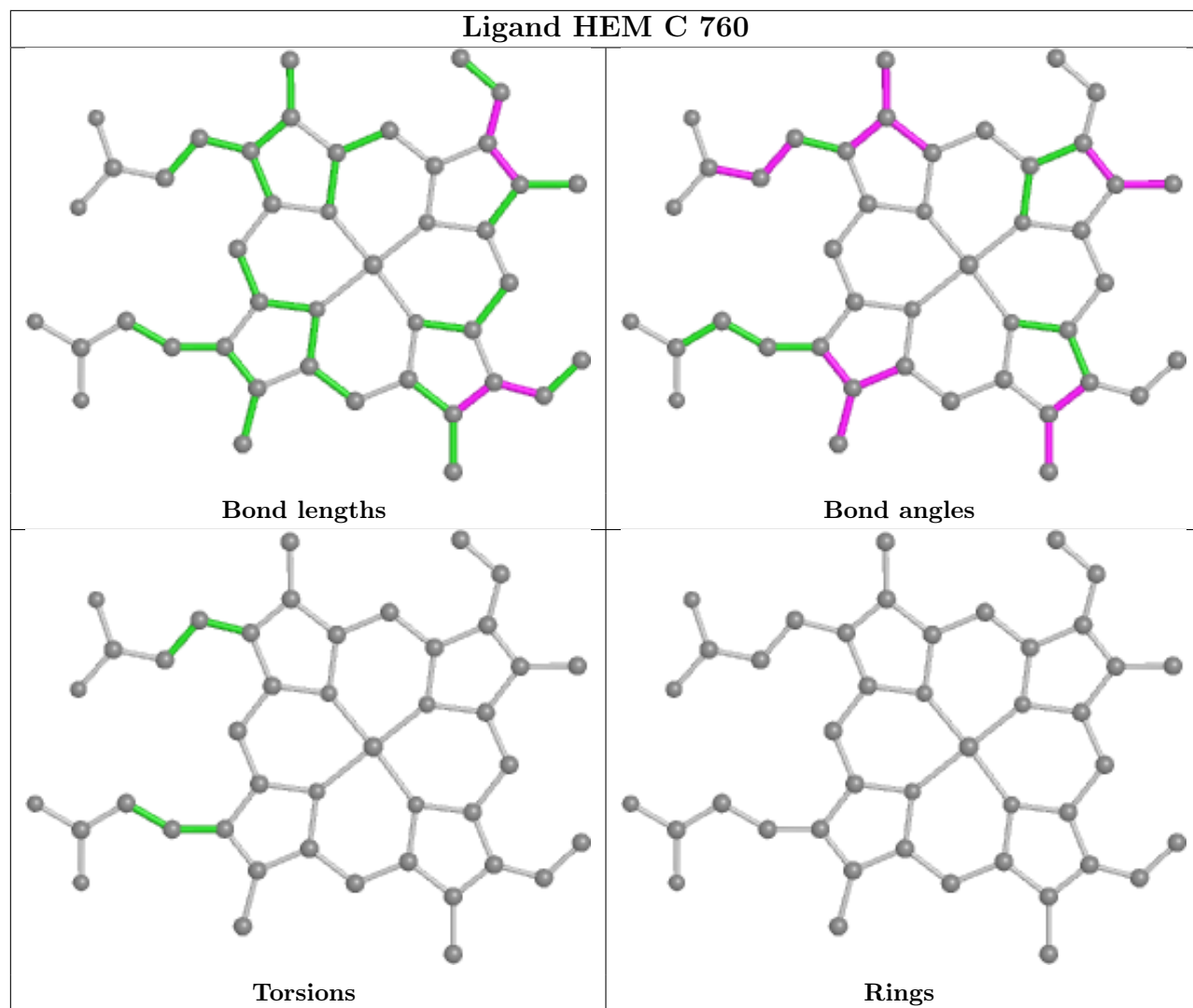
Mol	Chain	Res	Type	Clashes	Symm-Clashes
2	D	760	HEM	2	0
2	B	760	HEM	1	0
2	C	760	HEM	3	0
2	A	760	HEM	6	0

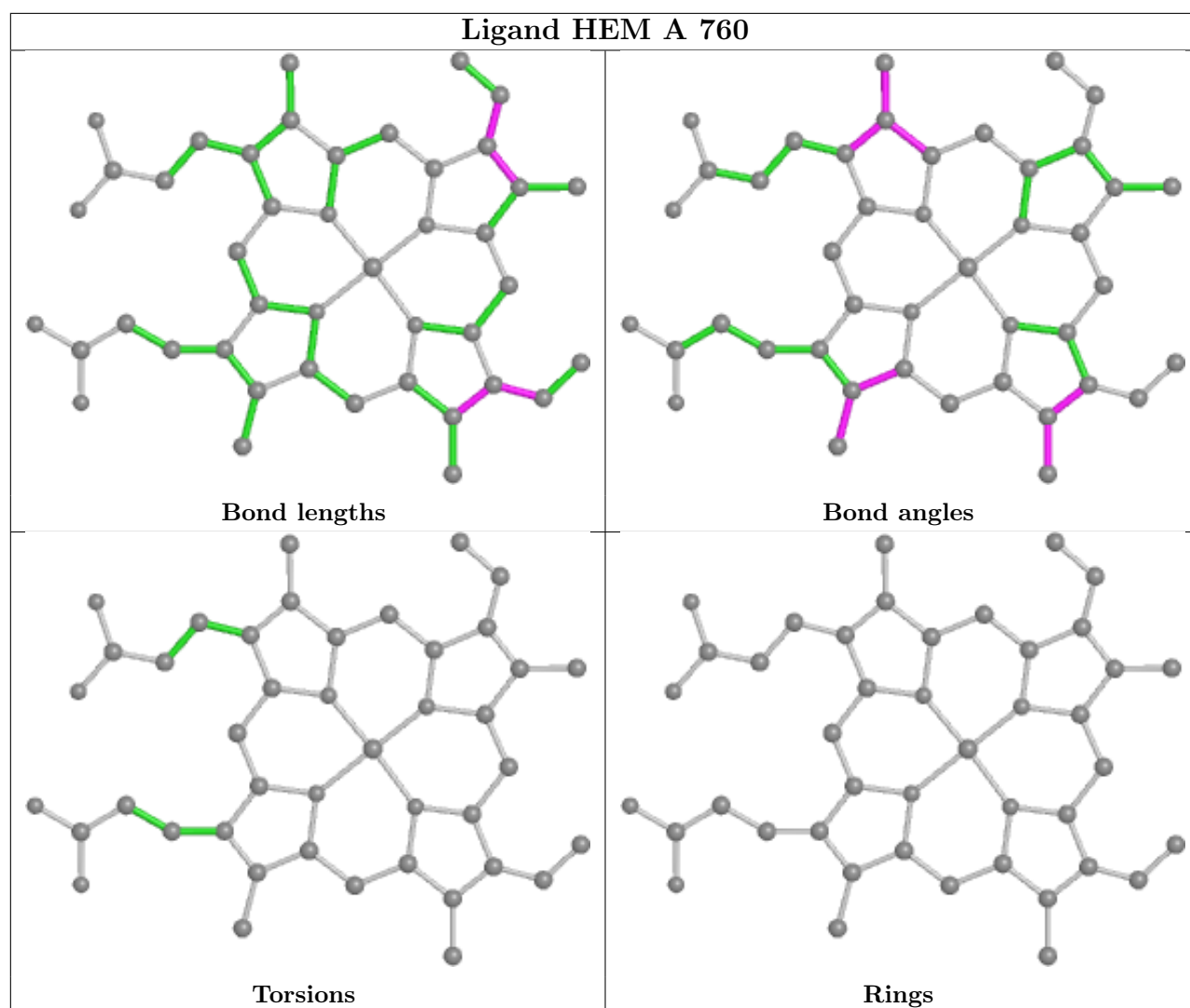
The following is a two-dimensional graphical depiction of Mogul quality analysis of bond lengths, bond angles, torsion angles, and ring geometry for all instances of the Ligand of Interest. In addition, ligands with molecular weight > 250 and outliers as shown on the validation Tables will also be included. For torsion angles, if less than 5% of the Mogul distribution of torsion angles is within 10 degrees of the torsion angle in question, then that torsion angle is considered an outlier. Any bond that is central to one or more torsion angles identified as an outlier by Mogul will be highlighted in the graph. For rings, the root-mean-square deviation (RMSD) between the ring in question and similar rings identified by Mogul is calculated over all ring torsion angles. If the average RMSD is greater than 60 degrees and the minimal RMSD between the ring in question and any Mogul-identified rings is also greater than 60 degrees, then that ring is considered an outlier. The outliers are highlighted in purple. The color gray indicates Mogul did not find sufficient equivalents in the CSD to analyse the geometry.











## 5.7 Other polymers [i](#)

There are no such residues in this entry.

## 5.8 Polymer linkage issues [i](#)

There are no chain breaks in this entry.

## 6 Fit of model and data [i](#)

### 6.1 Protein, DNA and RNA chains [i](#)

In the following table, the column labelled ‘#RSRZ> 2’ contains the number (and percentage) of RSRZ outliers, followed by percent RSRZ outliers for the chain as percentile scores relative to all X-ray entries and entries of similar resolution. The OWAB column contains the minimum, median, 95<sup>th</sup> percentile and maximum values of the occupancy-weighted average B-factor per residue. The column labelled ‘Q< 0.9’ lists the number of (and percentage) of residues with an average occupancy less than 0.9.

Mol	Chain	Analysed	<RSRZ>	#RSRZ>2	OWAB(Å <sup>2</sup> )	Q<0.9
1	A	727/753 (96%)	-0.83	8 (1%) 80 79	13, 23, 43, 70	1 (0%)
1	B	727/753 (96%)	-0.75	6 (0%) 86 84	14, 24, 48, 66	1 (0%)
1	C	727/753 (96%)	-0.79	3 (0%) 92 91	15, 24, 47, 64	1 (0%)
1	D	727/753 (96%)	-0.81	6 (0%) 86 84	15, 23, 44, 64	1 (0%)
All	All	2908/3012 (96%)	-0.80	23 (0%) 86 84	13, 23, 46, 70	4 (0%)

The worst 5 of 23 RSRZ outliers are listed below:

Mol	Chain	Res	Type	RSRZ
1	A	27	ASP	7.4
1	C	27	ASP	4.8
1	A	28	SER	4.7
1	A	711	ALA	4.3
1	D	27	ASP	4.1

### 6.2 Non-standard residues in protein, DNA, RNA chains [i](#)

There are no non-standard protein/DNA/RNA residues in this entry.

### 6.3 Carbohydrates [i](#)

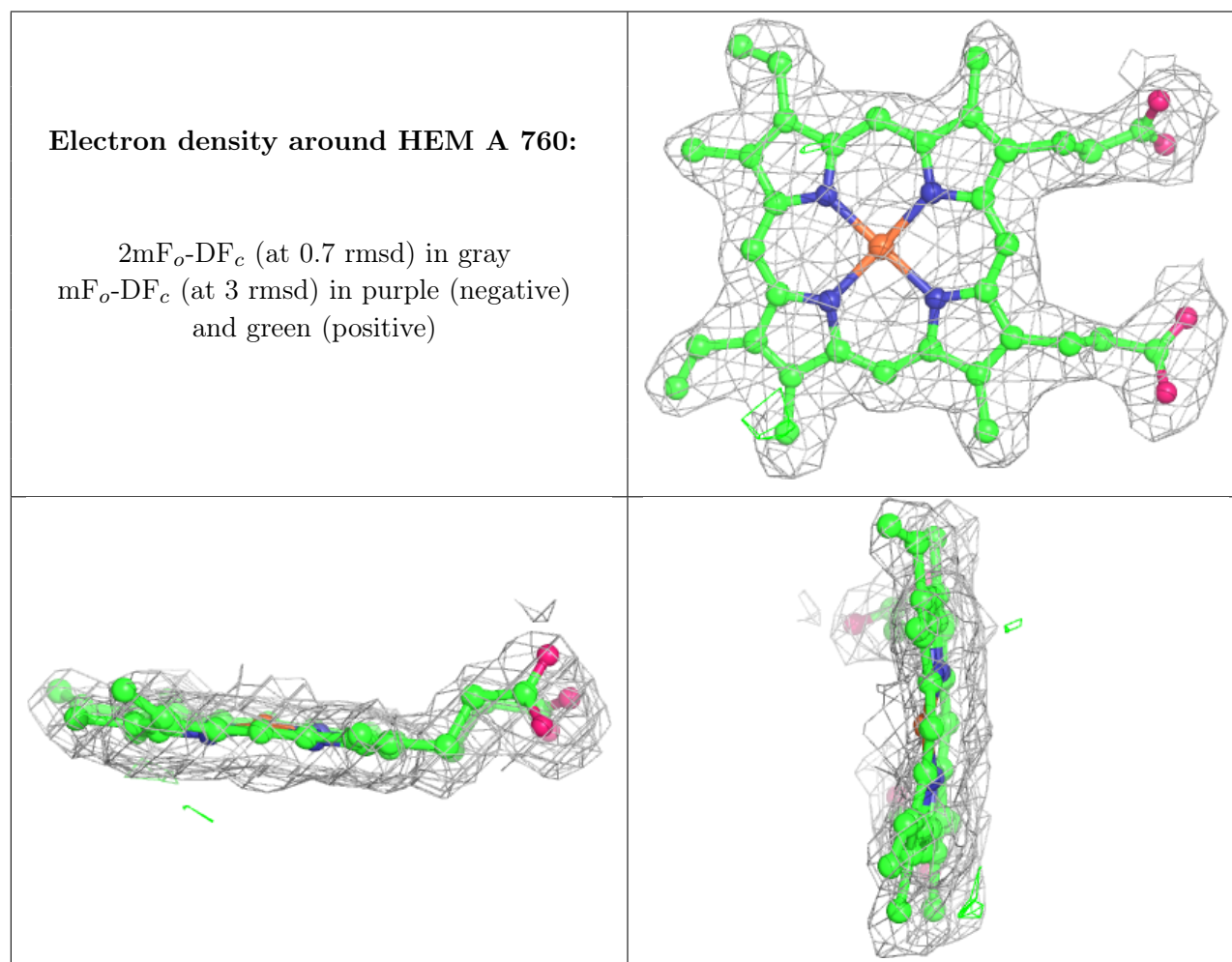
There are no monosaccharides in this entry.

### 6.4 Ligands [i](#)

In the following table, the Atoms column lists the number of modelled atoms in the group and the number defined in the chemical component dictionary. The B-factors column lists the minimum, median, 95<sup>th</sup> percentile and maximum values of B factors of atoms in the group. The column labelled ‘Q< 0.9’ lists the number of atoms with occupancy less than 0.9.

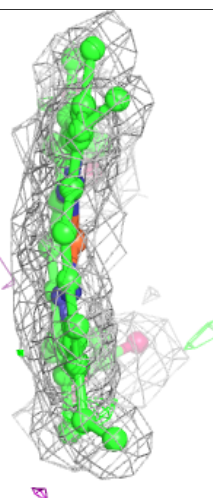
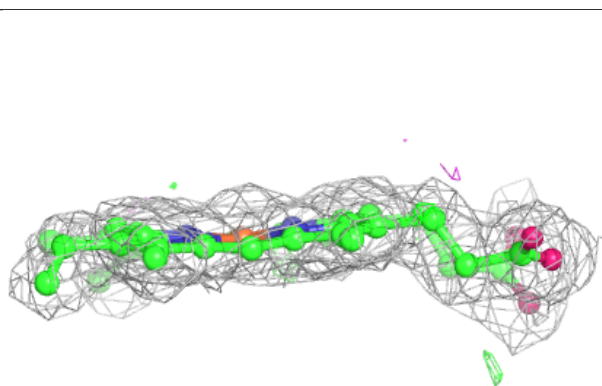
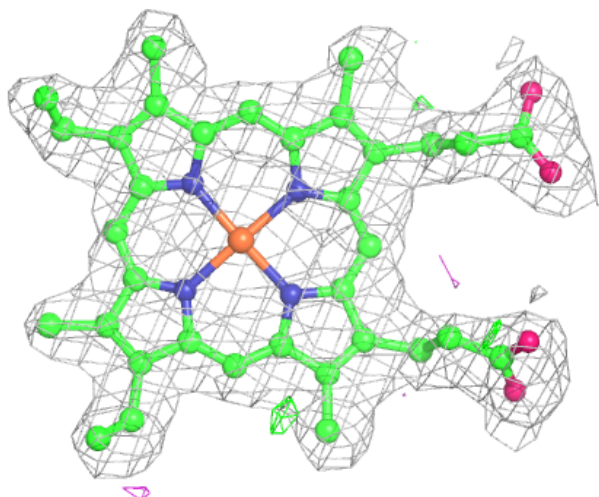
Mol	Type	Chain	Res	Atoms	RSCC	RSR	B-factors( $\text{\AA}^2$ )	Q<0.9
2	HEM	A	760	43/43	0.98	0.08	14,18,20,21	0
2	HEM	B	760	43/43	0.98	0.09	15,17,19,20	0
2	HEM	C	760	43/43	0.98	0.08	18,19,22,23	0
2	HEM	D	760	43/43	0.98	0.09	14,16,19,21	0

The following is a graphical depiction of the model fit to experimental electron density of all instances of the Ligand of Interest. In addition, ligands with molecular weight > 250 and outliers as shown on the geometry validation Tables will also be included. Each fit is shown from different orientation to approximate a three-dimensional view.



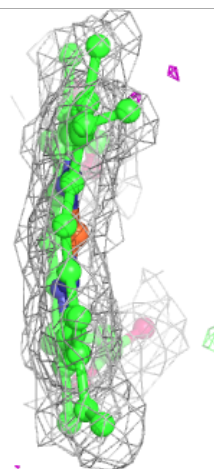
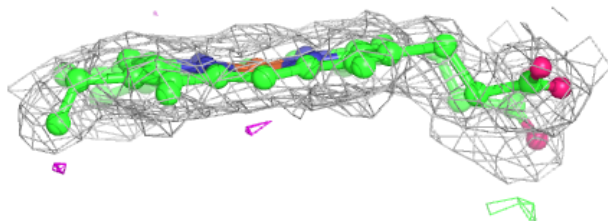
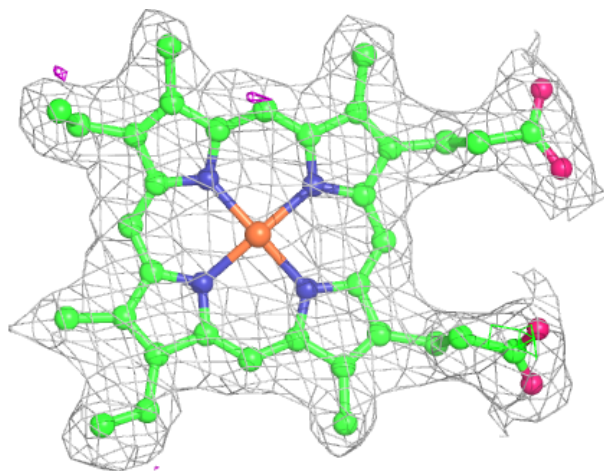
**Electron density around HEM B 760:**

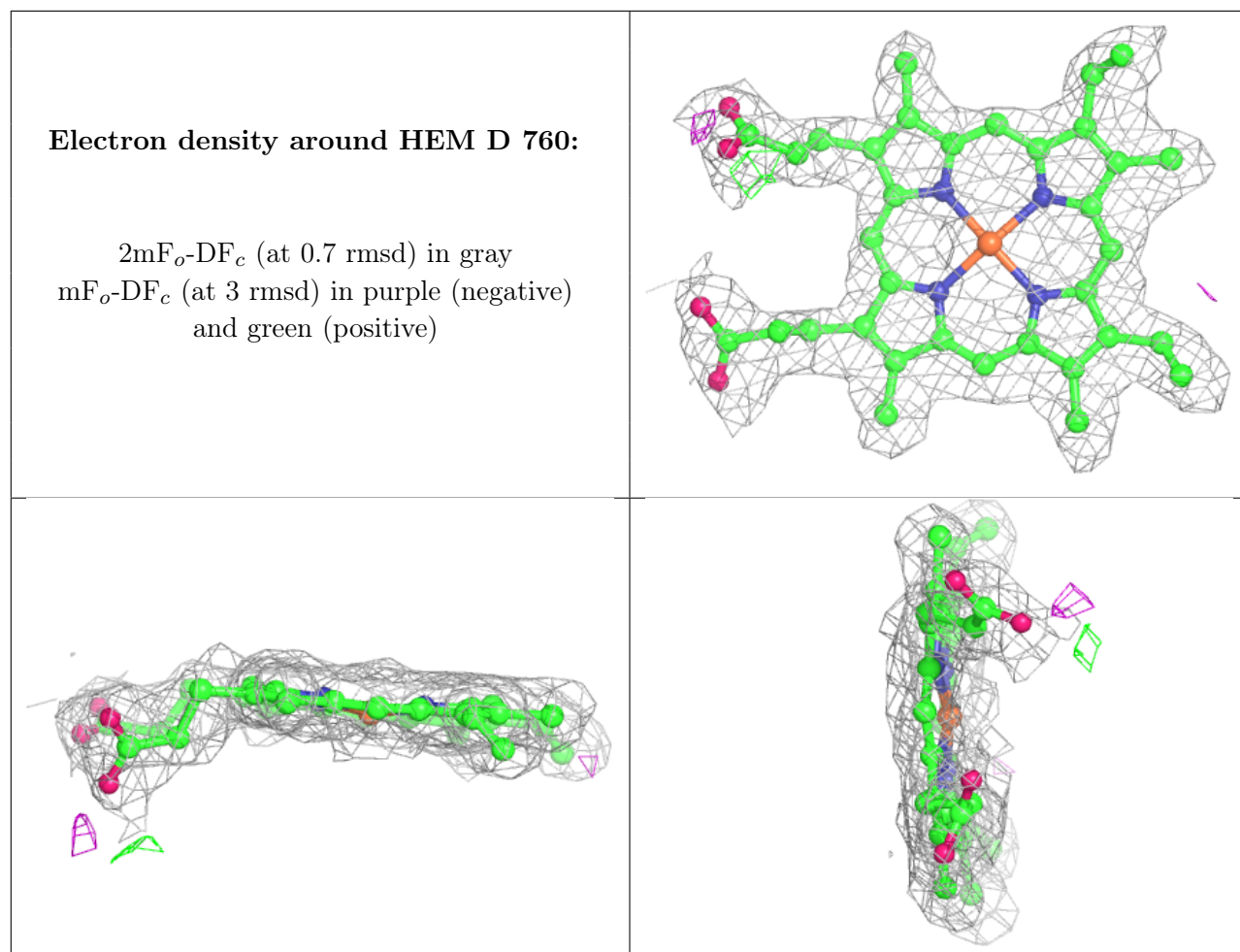
$2mF_o-DF_c$  (at 0.7 rmsd) in gray  
 $mF_o-DF_c$  (at 3 rmsd) in purple (negative)  
and green (positive)



**Electron density around HEM C 760:**

$2mF_o-DF_c$  (at 0.7 rmsd) in gray  
 $mF_o-DF_c$  (at 3 rmsd) in purple (negative)  
and green (positive)





## 6.5 Other polymers [i](#)

There are no such residues in this entry.