



# wwPDB X-ray Structure Validation Summary Report ⓘ

May 23, 2020 – 06:26 am BST

PDB ID : 6P9F  
Title : Crystal structure of RAR-related orphan receptor C (NHIS-RORGT(244-487)-L6-SRC1(678-692)) in complex with a phenyl (3-phenylpyrrolidin-3-yl)sulfonyl inhibitor  
Authors : Sack, J.  
Deposited on : 2019-06-10  
Resolution : 2.80 Å(reported)

This is a wwPDB X-ray Structure Validation Summary Report for a publicly released PDB entry.

We welcome your comments at [validation@mail.wwpdb.org](mailto:validation@mail.wwpdb.org)

A user guide is available at

<https://www.wwpdb.org/validation/2017/XrayValidationReportHelp>

with specific help available everywhere you see the ⓘ symbol.

---

The following versions of software and data (see [references ⓘ](#)) were used in the production of this report:

MolProbity : 4.02b-467  
Mogul : 1.8.5 (274361), CSD as541be (2020)  
Xtriage (Phenix) : 1.13  
EDS : 2.11  
buster-report : 1.1.7 (2018)  
Percentile statistics : 20191225.v01 (using entries in the PDB archive December 25th 2019)  
Refmac : 5.8.0158  
CCP4 : 7.0.044 (Gargrove)  
Ideal geometry (proteins) : Engh & Huber (2001)  
Ideal geometry (DNA, RNA) : Parkinson et al. (1996)  
Validation Pipeline (wwPDB-VP) : 2.11

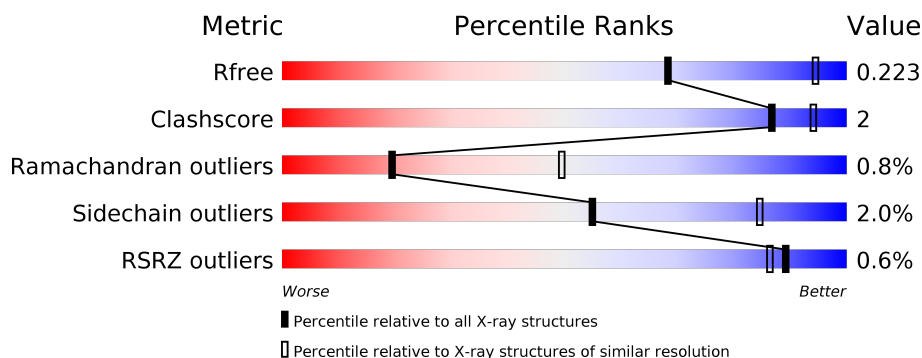
# 1 Overall quality at a glance ⓘ

The following experimental techniques were used to determine the structure:

## *X-RAY DIFFRACTION*

The reported resolution of this entry is 2.80 Å.

Percentile scores (ranging between 0-100) for global validation metrics of the entry are shown in the following graphic. The table shows the number of entries on which the scores are based.



Metric	Whole archive (#Entries)	Similar resolution (#Entries, resolution range(Å))
$R_{free}$	130704	3140 (2.80-2.80)
Clashscore	141614	3569 (2.80-2.80)
Ramachandran outliers	138981	3498 (2.80-2.80)
Sidechain outliers	138945	3500 (2.80-2.80)
RSRZ outliers	127900	3078 (2.80-2.80)

The table below summarises the geometric issues observed across the polymeric chains and their fit to the electron density. The red, orange, yellow and green segments on the lower bar indicate the fraction of residues that contain outliers for  $\geq 3$ , 2, 1 and 0 types of geometric quality criteria respectively. A grey segment represents the fraction of residues that are not modelled. The numeric value for each fraction is indicated below the corresponding segment, with a dot representing fractions  $\leq 5\%$ . The upper red bar (where present) indicates the fraction of residues that have poor fit to the electron density. The numeric value is given above the bar.

Mol	Chain	Length	Quality of chain
1	A	285	
1	B	285	

## 2 Entry composition

There are 3 unique types of molecules in this entry. The entry contains 4288 atoms, of which 0 are hydrogens and 0 are deuteriums.

In the tables below, the ZeroOcc column contains the number of atoms modelled with zero occupancy, the AltConf column contains the number of residues with at least one atom in alternate conformation and the Trace column contains the number of residues modelled with at most 2 atoms.

- Molecule 1 is a protein called Nuclear receptor ROR-gamma, Nuclear receptor coactivator 1 chimera.

Mol	Chain	Residues	Atoms					ZeroOcc	AltConf	Trace
1	A	258	Total	C	N	O	S	0	0	0
			2091	1333	371	372	15			
1	B	257	Total	C	N	O	S	0	0	0
			2090	1331	376	369	14			

There are 54 discrepancies between the modelled and reference sequences:

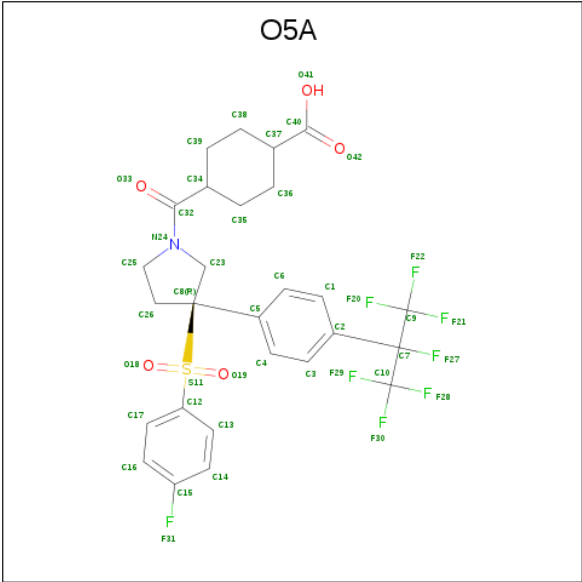
Chain	Residue	Modelled	Actual	Comment	Reference
A	244	MET	-	expression tag	UNP P51449
A	245	GLY	-	expression tag	UNP P51449
A	246	SER	-	expression tag	UNP P51449
A	247	SER	-	expression tag	UNP P51449
A	248	HIS	-	expression tag	UNP P51449
A	249	HIS	-	expression tag	UNP P51449
A	250	HIS	-	expression tag	UNP P51449
A	251	HIS	-	expression tag	UNP P51449
A	252	HIS	-	expression tag	UNP P51449
A	253	HIS	-	expression tag	UNP P51449
A	254	SER	-	expression tag	UNP P51449
A	255	SER	-	expression tag	UNP P51449
A	256	GLY	-	expression tag	UNP P51449
A	257	LEU	-	expression tag	UNP P51449
A	258	VAL	-	expression tag	UNP P51449
A	259	PRO	-	expression tag	UNP P51449
A	260	ARG	-	expression tag	UNP P51449
A	261	GLY	-	expression tag	UNP P51449
A	262	SER	-	expression tag	UNP P51449
A	263	HIS	-	expression tag	UNP P51449
A	264	MET	-	expression tag	UNP P51449
A	509	SER	-	linker	UNP P51449
A	510	GLY	-	linker	UNP P51449
A	511	GLY	-	linker	UNP P51449

*Continued on next page...*

*Continued from previous page...*

Chain	Residue	Modelled	Actual	Comment	Reference
A	512	SER	-	linker	UNP P51449
A	513	GLY	-	linker	UNP P51449
A	514	GLY	-	linker	UNP P51449
B	244	MET	-	expression tag	UNP P51449
B	245	GLY	-	expression tag	UNP P51449
B	246	SER	-	expression tag	UNP P51449
B	247	SER	-	expression tag	UNP P51449
B	248	HIS	-	expression tag	UNP P51449
B	249	HIS	-	expression tag	UNP P51449
B	250	HIS	-	expression tag	UNP P51449
B	251	HIS	-	expression tag	UNP P51449
B	252	HIS	-	expression tag	UNP P51449
B	253	HIS	-	expression tag	UNP P51449
B	254	SER	-	expression tag	UNP P51449
B	255	SER	-	expression tag	UNP P51449
B	256	GLY	-	expression tag	UNP P51449
B	257	LEU	-	expression tag	UNP P51449
B	258	VAL	-	expression tag	UNP P51449
B	259	PRO	-	expression tag	UNP P51449
B	260	ARG	-	expression tag	UNP P51449
B	261	GLY	-	expression tag	UNP P51449
B	262	SER	-	expression tag	UNP P51449
B	263	HIS	-	expression tag	UNP P51449
B	264	MET	-	expression tag	UNP P51449
B	509	SER	-	linker	UNP P51449
B	510	GLY	-	linker	UNP P51449
B	511	GLY	-	linker	UNP P51449
B	512	SER	-	linker	UNP P51449
B	513	GLY	-	linker	UNP P51449
B	514	GLY	-	linker	UNP P51449

- Molecule 2 is trans-4-[(3R)-3-[(4-fluorophenyl)sulfonyl]-3-[4-(1,1,1,2,3,3,3-heptafluoropropan-2-yl)phenyl]pyrrolidine-1-carbonyl]cyclohexane-1-carboxylic acid (three-letter code: O5A) (formula: C<sub>27</sub>H<sub>25</sub>F<sub>8</sub>NO<sub>5</sub>S) (labeled as "Ligand of Interest" by author).



Mol	Chain	Residues	Atoms						ZeroOcc	AltConf
2	A	1	Total	C	F	N	O	S	0	0
			42	27	8	1	5	1		
2	B	1	Total	C	F	N	O	S	0	0
			42	27	8	1	5	1		

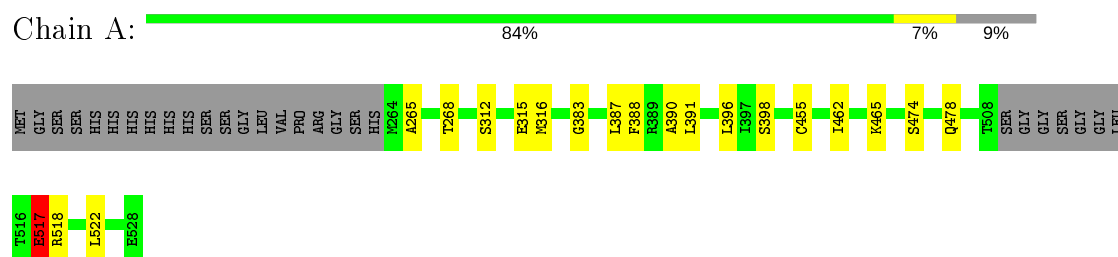
- Molecule 3 is water.

Mol	Chain	Residues	Atoms		ZeroOcc	AltConf
3	A	12	Total	O	0	0
			12	12		
3	B	11	Total	O	0	0
			11	11		

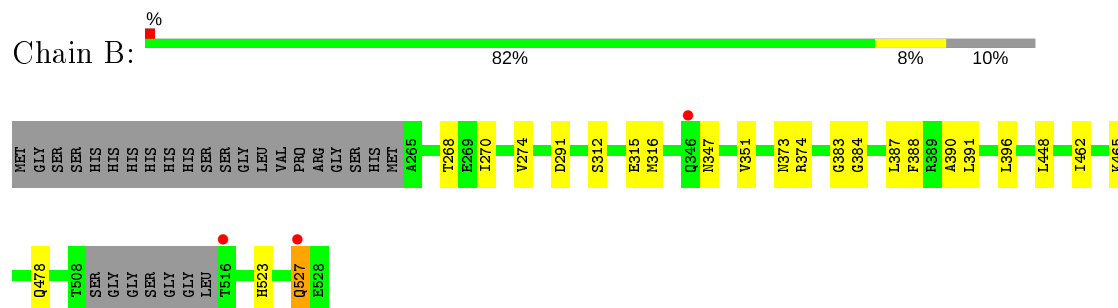
### 3 Residue-property plots [i](#)

These plots are drawn for all protein, RNA and DNA chains in the entry. The first graphic for a chain summarises the proportions of the various outlier classes displayed in the second graphic. The second graphic shows the sequence view annotated by issues in geometry and electron density. Residues are color-coded according to the number of geometric quality criteria for which they contain at least one outlier: green = 0, yellow = 1, orange = 2 and red = 3 or more. A red dot above a residue indicates a poor fit to the electron density ( $RSRZ > 2$ ). Stretches of 2 or more consecutive residues without any outlier are shown as a green connector. Residues present in the sample, but not in the model, are shown in grey.

- Molecule 1: Nuclear receptor ROR-gamma, Nuclear receptor coactivator 1 chimera



- Molecule 1: Nuclear receptor ROR-gamma, Nuclear receptor coactivator 1 chimera



## 4 Data and refinement statistics

Property	Value	Source
Space group	P 41	Depositor
Cell constants a, b, c, $\alpha$ , $\beta$ , $\gamma$	64.13Å 64.13Å 159.67Å 90.00° 90.00° 90.00°	Depositor
Resolution (Å)	64.13 – 2.80 64.13 – 2.80	Depositor EDS
% Data completeness (in resolution range)	99.9 (64.13-2.80) 99.9 (64.13-2.80)	Depositor EDS
$R_{merge}$	0.04	Depositor
$R_{sym}$	(Not available)	Depositor
$\langle I/\sigma(I) \rangle$ <sup>1</sup>	4.12 (at 2.81Å)	Xtriage
Refinement program	BUSTER 2.11.7	Depositor
R, $R_{free}$	0.184 , 0.223 0.185 , 0.223	Depositor DCC
$R_{free}$ test set	836 reflections (5.29%)	wwPDB-VP
Wilson B-factor (Å <sup>2</sup> )	70.0	Xtriage
Anisotropy	0.096	Xtriage
Bulk solvent $k_{sol}$ (e/Å <sup>3</sup> ), $B_{sol}$ (Å <sup>2</sup> )	0.32 , 51.2	EDS
L-test for twinning <sup>2</sup>	$\langle  L  \rangle = 0.50$ , $\langle L^2 \rangle = 0.33$	Xtriage
Estimated twinning fraction	0.063 for h,-k,-l	Xtriage
$F_o, F_c$ correlation	0.95	EDS
Total number of atoms	4288	wwPDB-VP
Average B, all atoms (Å <sup>2</sup> )	72.0	wwPDB-VP

Xtriage's analysis on translational NCS is as follows: *The largest off-origin peak in the Patterson function is 4.21% of the height of the origin peak. No significant pseudotranslation is detected.*

<sup>1</sup> Intensities estimated from amplitudes.

<sup>2</sup> Theoretical values of  $\langle |L| \rangle$ ,  $\langle L^2 \rangle$  for acentric reflections are 0.5, 0.333 respectively for untwinned datasets, and 0.375, 0.2 for perfectly twinned datasets.

## 5 Model quality

### 5.1 Standard geometry

Bond lengths and bond angles in the following residue types are not validated in this section: O5A

The Z score for a bond length (or angle) is the number of standard deviations the observed value is removed from the expected value. A bond length (or angle) with  $|Z| > 5$  is considered an outlier worth inspection. RMSZ is the root-mean-square of all Z scores of the bond lengths (or angles).

Mol	Chain	Bond lengths		Bond angles	
		RMSZ	$\# Z  > 5$	RMSZ	$\# Z  > 5$
1	A	0.52	0/2135	0.67	0/2878
1	B	0.50	0/2134	0.66	0/2876
All	All	0.51	0/4269	0.67	0/5754

There are no bond length outliers.

There are no bond angle outliers.

There are no chirality outliers.

There are no planarity outliers.

### 5.2 Too-close contacts

In the following table, the Non-H and H(model) columns list the number of non-hydrogen atoms and hydrogen atoms in the chain respectively. The H(added) column lists the number of hydrogen atoms added and optimized by MolProbity. The Clashes column lists the number of clashes within the asymmetric unit, whereas Symm-Clashes lists symmetry related clashes.

Mol	Chain	Non-H	H(model)	H(added)	Clashes	Symm-Clashes
1	A	2091	0	2071	7	0
1	B	2090	0	2078	11	0
2	A	42	0	0	0	0
2	B	42	0	0	0	0
3	A	12	0	0	0	0
3	B	11	0	0	0	0
All	All	4288	0	4149	18	0

The all-atom clashscore is defined as the number of clashes found per 1000 atoms (including hydrogen atoms). The all-atom clashscore for this structure is 2.

The worst 5 of 18 close contacts within the same asymmetric unit are listed below, sorted by their



clash magnitude.

Atom-1	Atom-2	Interatomic distance (Å)	Clash overlap (Å)
1:A:383:GLY:HA3	1:A:387:LEU:HD22	1.92	0.51
1:A:388:PHE:HB3	1:A:391:LEU:HD12	1.93	0.51
1:B:383:GLY:HA3	1:B:387:LEU:HD22	1.91	0.51
1:B:270:ILE:HD11	1:B:448:LEU:HD13	1.94	0.50
1:B:388:PHE:HB3	1:B:391:LEU:HD12	1.93	0.49

There are no symmetry-related clashes.

## 5.3 Torsion angles [i](#)

### 5.3.1 Protein backbone [i](#)

In the following table, the Percentiles column shows the percent Ramachandran outliers of the chain as a percentile score with respect to all X-ray entries followed by that with respect to entries of similar resolution.

The Analysed column shows the number of residues for which the backbone conformation was analysed, and the total number of residues.

Mol	Chain	Analysed	Favoured	Allowed	Outliers	Percentiles	
1	A	254/285 (89%)	243 (96%)	9 (4%)	2 (1%)	19	49
1	B	253/285 (89%)	240 (95%)	11 (4%)	2 (1%)	19	49
All	All	507/570 (89%)	483 (95%)	20 (4%)	4 (1%)	19	49

All (4) Ramachandran outliers are listed below:

Mol	Chain	Res	Type
1	A	265	ALA
1	A	517	GLU
1	B	374	ARG
1	B	527	GLN

### 5.3.2 Protein sidechains [i](#)

In the following table, the Percentiles column shows the percent sidechain outliers of the chain as a percentile score with respect to all X-ray entries followed by that with respect to entries of similar resolution.

The Analysed column shows the number of residues for which the sidechain conformation was

analysed, and the total number of residues.

Mol	Chain	Analysed	Rotameric	Outliers	Percentiles	
1	A	226/252 (90%)	220 (97%)	6 (3%)	44	78
1	B	226/252 (90%)	223 (99%)	3 (1%)	69	91
All	All	452/504 (90%)	443 (98%)	9 (2%)	55	84

5 of 9 residues with a non-rotameric sidechain are listed below:

Mol	Chain	Res	Type
1	A	517	GLU
1	B	373	ASN
1	B	268	THR
1	A	455	CYS
1	A	522	LEU

Some sidechains can be flipped to improve hydrogen bonding and reduce clashes. All (2) such sidechains are listed below:

Mol	Chain	Res	Type
1	A	523	HIS
1	B	519	HIS

### 5.3.3 RNA [i](#)

There are no RNA molecules in this entry.

## 5.4 Non-standard residues in protein, DNA, RNA chains [i](#)

There are no non-standard protein/DNA/RNA residues in this entry.

## 5.5 Carbohydrates [i](#)

There are no carbohydrates in this entry.

## 5.6 Ligand geometry [i](#)

2 ligands are modelled in this entry.

In the following table, the Counts columns list the number of bonds (or angles) for which Mogul statistics could be retrieved, the number of bonds (or angles) that are observed in the model and

the number of bonds (or angles) that are defined in the Chemical Component Dictionary. The Link column lists molecule types, if any, to which the group is linked. The Z score for a bond length (or angle) is the number of standard deviations the observed value is removed from the expected value. A bond length (or angle) with  $|Z| > 2$  is considered an outlier worth inspection. RMSZ is the root-mean-square of all Z scores of the bond lengths (or angles).

Mol	Type	Chain	Res	Link	Bond lengths			Bond angles		
					Counts	RMSZ	$\# Z  > 2$	Counts	RMSZ	$\# Z  > 2$
2	O5A	B	4000	-	40,45,45	0.34	0	61,72,72	0.52	0
2	O5A	A	4000	-	40,45,45	0.45	0	61,72,72	0.54	1 (1%)

In the following table, the Chirals column lists the number of chiral outliers, the number of chiral centers analysed, the number of these observed in the model and the number defined in the Chemical Component Dictionary. Similar counts are reported in the Torsion and Rings columns. '-' means no outliers of that kind were identified.

Mol	Type	Chain	Res	Link	Chirals	Torsions	Rings
2	O5A	B	4000	-	-	3/53/78/78	0/4/4/4
2	O5A	A	4000	-	-	4/53/78/78	0/4/4/4

There are no bond length outliers.

All (1) bond angle outliers are listed below:

Mol	Chain	Res	Type	Atoms	Z	Observed(°)	Ideal(°)
2	A	4000	O5A	C25-N24-C23	-3.06	107.98	112.36

There are no chirality outliers.

5 of 7 torsion outliers are listed below:

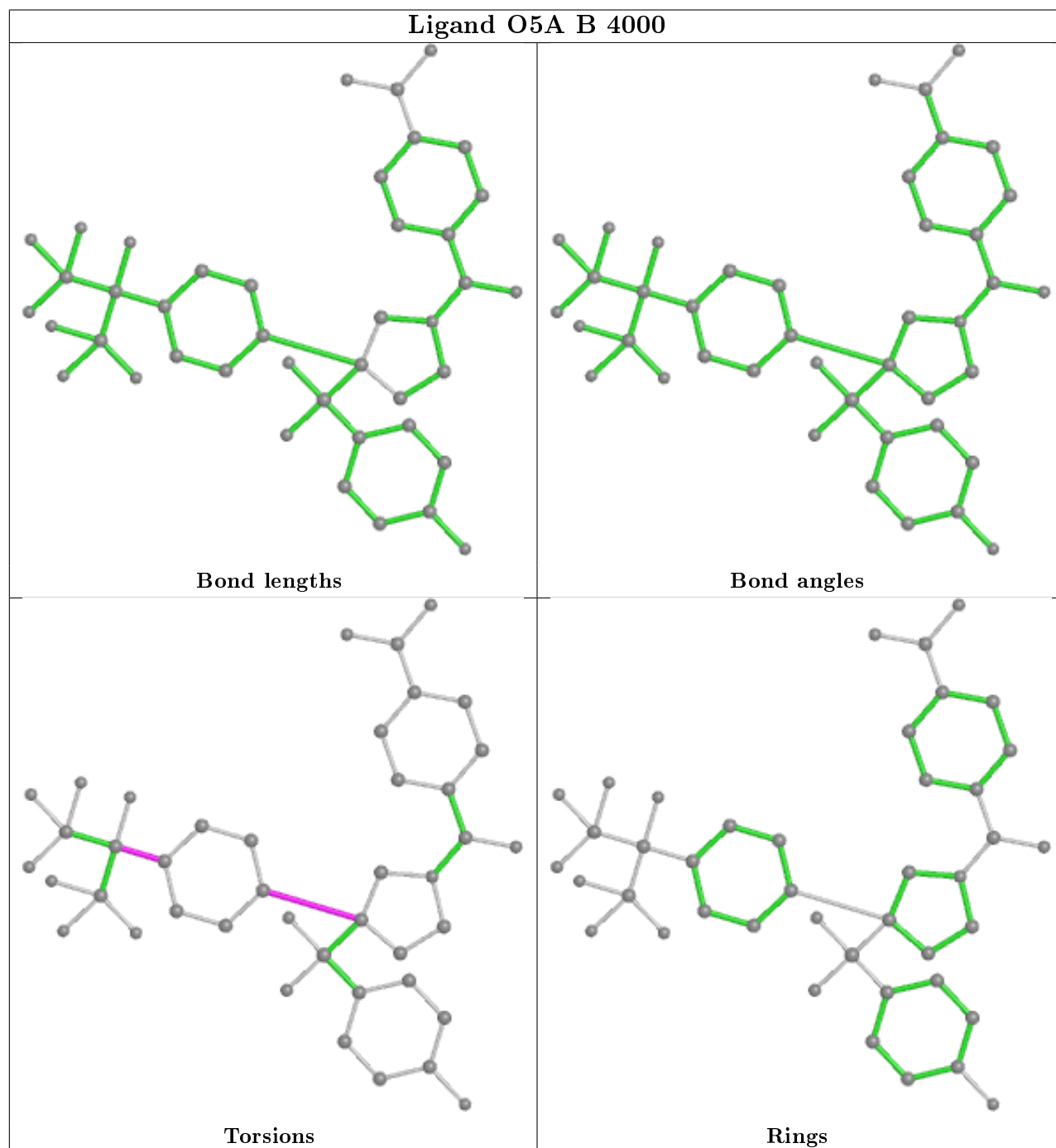
Mol	Chain	Res	Type	Atoms
2	A	4000	O5A	C3-C2-C7-C9
2	B	4000	O5A	C6-C5-C8-C26
2	A	4000	O5A	C4-C5-C8-C26
2	B	4000	O5A	C4-C5-C8-C26
2	A	4000	O5A	C6-C5-C8-C26

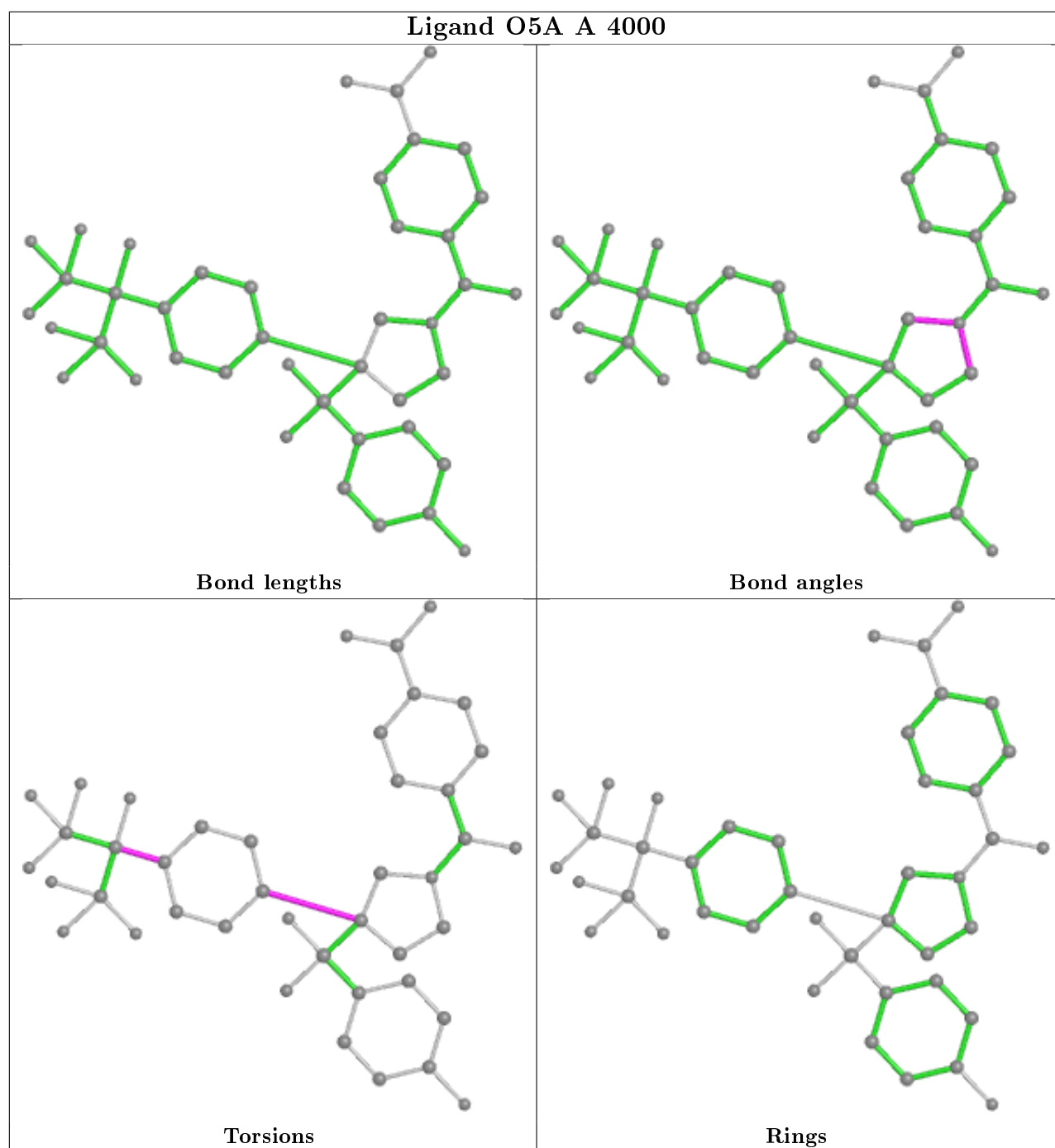
There are no ring outliers.

No monomer is involved in short contacts.

The following is a two-dimensional graphical depiction of Mogul quality analysis of bond lengths, bond angles, torsion angles, and ring geometry for all instances of the Ligand of Interest. In addition, ligands with molecular weight  $> 250$  and outliers as shown on the validation Tables will also be included. For torsion angles, if less than 5% of the Mogul distribution of torsion angles is

within 10 degrees of the torsion angle in question, then that torsion angle is considered an outlier. Any bond that is central to one or more torsion angles identified as an outlier by Mogul will be highlighted in the graph. For rings, the root-mean-square deviation (RMSD) between the ring in question and similar rings identified by Mogul is calculated over all ring torsion angles. If the average RMSD is greater than 60 degrees and the minimal RMSD between the ring in question and any Mogul-identified rings is also greater than 60 degrees, then that ring is considered an outlier. The outliers are highlighted in purple. The color gray indicates Mogul did not find sufficient equivalents in the CSD to analyse the geometry.





## 5.7 Other polymers [i](#)

There are no such residues in this entry.

## 5.8 Polymer linkage issues [i](#)

There are no chain breaks in this entry.

## 6 Fit of model and data [i](#)

### 6.1 Protein, DNA and RNA chains [i](#)

In the following table, the column labelled ‘#RSRZ> 2’ contains the number (and percentage) of RSRZ outliers, followed by percent RSRZ outliers for the chain as percentile scores relative to all X-ray entries and entries of similar resolution. The OWAB column contains the minimum, median, 95<sup>th</sup> percentile and maximum values of the occupancy-weighted average B-factor per residue. The column labelled ‘Q< 0.9’ lists the number of (and percentage) of residues with an average occupancy less than 0.9.

Mol	Chain	Analysed	<RSRZ>	#RSRZ>2	OWAB(Å <sup>2</sup> )	Q<0.9
1	A	258/285 (90%)	-0.19	0 100 100	48, 68, 92, 135	0
1	B	257/285 (90%)	-0.19	3 (1%) 79 73	52, 72, 95, 118	0
All	All	515/570 (90%)	-0.19	3 (0%) 89 86	48, 70, 95, 135	0

All (3) RSRZ outliers are listed below:

Mol	Chain	Res	Type	RSRZ
1	B	516	THR	3.1
1	B	527	GLN	2.5
1	B	346	GLN	2.1

### 6.2 Non-standard residues in protein, DNA, RNA chains [i](#)

There are no non-standard protein/DNA/RNA residues in this entry.

### 6.3 Carbohydrates [i](#)

There are no carbohydrates in this entry.

### 6.4 Ligands [i](#)

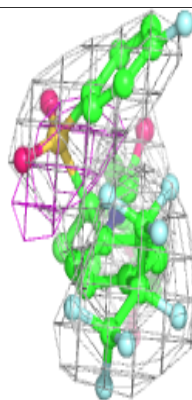
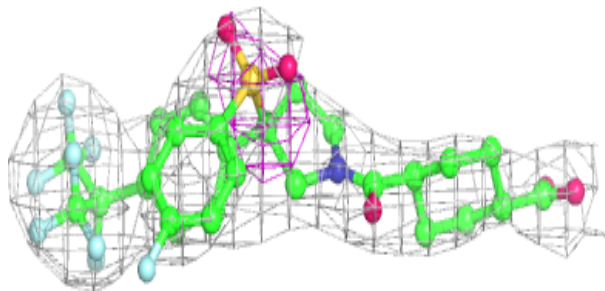
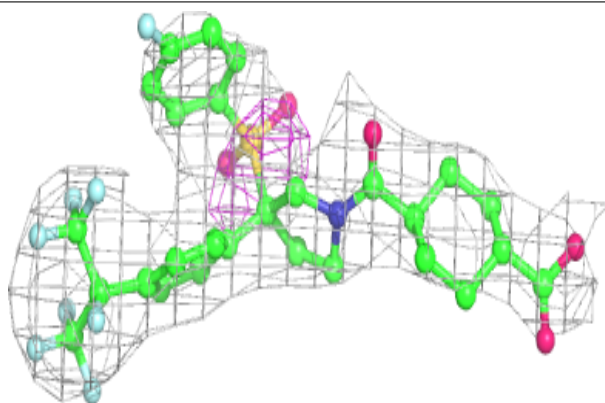
In the following table, the Atoms column lists the number of modelled atoms in the group and the number defined in the chemical component dictionary. The B-factors column lists the minimum, median, 95<sup>th</sup> percentile and maximum values of B factors of atoms in the group. The column labelled ‘Q< 0.9’ lists the number of atoms with occupancy less than 0.9.

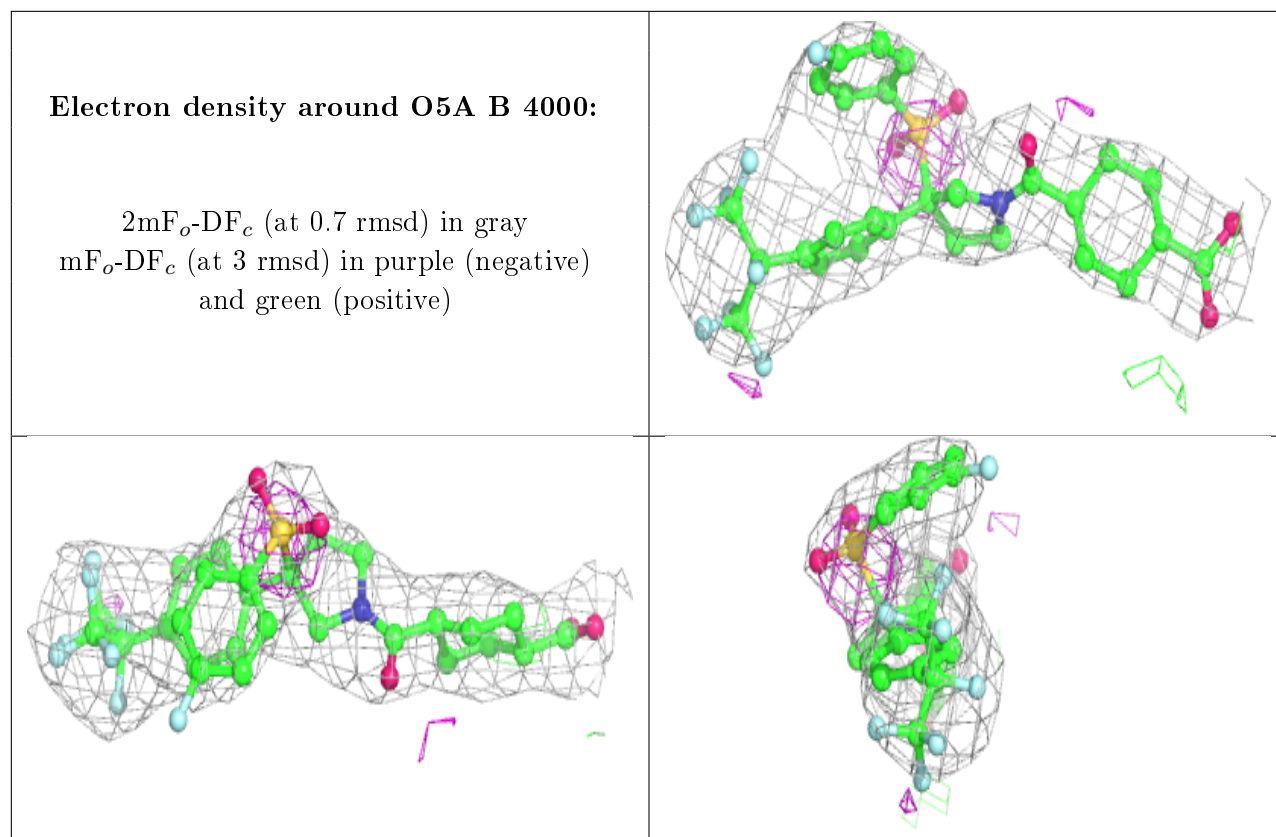
Mol	Type	Chain	Res	Atoms	RSCC	RSR	B-factors(Å <sup>2</sup> )	Q<0.9
2	O5A	A	4000	42/42	0.89	0.35	103,117,131,132	0
2	O5A	B	4000	42/42	0.90	0.29	92,110,130,133	0

The following is a graphical depiction of the model fit to experimental electron density of all instances of the Ligand of Interest. In addition, ligands with molecular weight > 250 and outliers as shown on the geometry validation Tables will also be included. Each fit is shown from different orientation to approximate a three-dimensional view.

**Electron density around O5A A 4000:**

2mF<sub>o</sub>-DF<sub>c</sub> (at 0.7 rmsd) in gray  
mF<sub>o</sub>-DF<sub>c</sub> (at 3 rmsd) in purple (negative)  
and green (positive)





## 6.5 Other polymers [i](#)

There are no such residues in this entry.