



Full wwPDB X-ray Structure Validation Report ⓘ

May 24, 2020 – 06:02 am BST

PDB ID : 4PCS
Title : Crystal structure of a bacterial fucosidase with iminosugar (2S,3S,4R,5S)-3,4-dihydroxy-2-[2'-phenyl]ethynyl-5-methylpyrrolidine
Authors : Davies, G.J.; Wright, D.W.; Behr, J.B.
Deposited on : 2014-04-16
Resolution : 1.77 Å(reported)

This is a Full wwPDB X-ray Structure Validation Report for a publicly released PDB entry.

We welcome your comments at validation@mail.wwpdb.org

A user guide is available at

<https://www.wwpdb.org/validation/2017/XrayValidationReportHelp>

with specific help available everywhere you see the ⓘ symbol.

The following versions of software and data (see [references ⓘ](#)) were used in the production of this report:

MolProbity : 4.02b-467
Mogul : 1.8.5 (274361), CSD as541be (2020)
Xtriage (Phenix) : 1.13
EDS : 2.11
Percentile statistics : 20191225.v01 (using entries in the PDB archive December 25th 2019)
Refmac : 5.8.0158
CCP4 : 7.0.044 (Gargrove)
Ideal geometry (proteins) : Engh & Huber (2001)
Ideal geometry (DNA, RNA) : Parkinson et al. (1996)
Validation Pipeline (wwPDB-VP) : 2.11

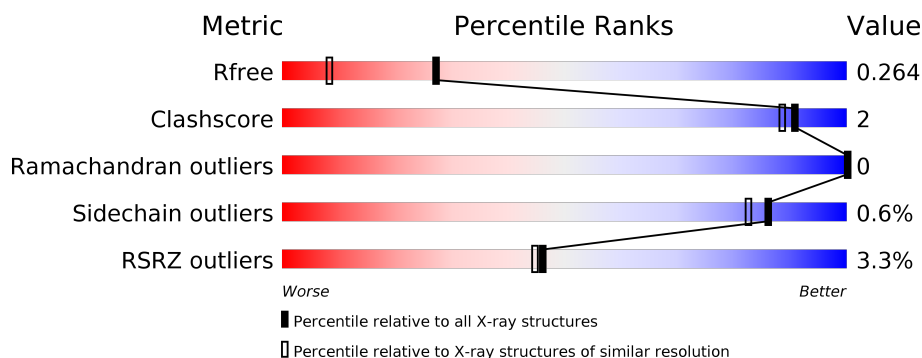
1 Overall quality at a glance

The following experimental techniques were used to determine the structure:

X-RAY DIFFRACTION

The reported resolution of this entry is 1.77 Å.

Percentile scores (ranging between 0-100) for global validation metrics of the entry are shown in the following graphic. The table shows the number of entries on which the scores are based.



Metric	Whole archive (#Entries)	Similar resolution (#Entries, resolution range(Å))
R_{free}	130704	9185 (1.80-1.76)
Clashscore	141614	10184 (1.80-1.76)
Ramachandran outliers	138981	10051 (1.80-1.76)
Sidechain outliers	138945	10050 (1.80-1.76)
RSRZ outliers	127900	9032 (1.80-1.76)

The table below summarises the geometric issues observed across the polymeric chains and their fit to the electron density. The red, orange, yellow and green segments on the lower bar indicate the fraction of residues that contain outliers for ≥ 3 , 2, 1 and 0 types of geometric quality criteria respectively. A grey segment represents the fraction of residues that are not modelled. The numeric value for each fraction is indicated below the corresponding segment, with a dot representing fractions $\leq 5\%$. The upper red bar (where present) indicates the fraction of residues that have poor fit to the electron density. The numeric value is given above the bar.

Mol	Chain	Length	Quality of chain
1	A	439	<div> <div>3%</div> <div>95%</div> <div>•</div> </div>
1	B	439	<div> <div>%</div> <div>93%</div> <div>6%</div> </div>
1	C	439	<div> <div>3%</div> <div>95%</div> <div>•</div> </div>
1	D	439	<div> <div>6%</div> <div>95%</div> <div>•</div> </div>

2 Entry composition [i](#)

There are 5 unique types of molecules in this entry. The entry contains 14895 atoms, of which 0 are hydrogens and 0 are deuteriums.

In the tables below, the ZeroOcc column contains the number of atoms modelled with zero occupancy, the AltConf column contains the number of residues with at least one atom in alternate conformation and the Trace column contains the number of residues modelled with at most 2 atoms.

- Molecule 1 is a protein called Alpha-L-fucosidase.

Mol	Chain	Residues	Atoms					ZeroOcc	AltConf	Trace
1	A	439	Total	C	N	O	S	0	2	0
			3559	2288	598	657	16			
1	B	439	Total	C	N	O	S	0	2	0
			3580	2302	603	659	16			
1	C	437	Total	C	N	O	S	0	1	0
			3549	2281	596	655	17			
1	D	437	Total	C	N	O	S	0	0	0
			3495	2248	580	651	16			

- Molecule 2 is SULFATE ION (three-letter code: SO₄) (formula: O₄S).



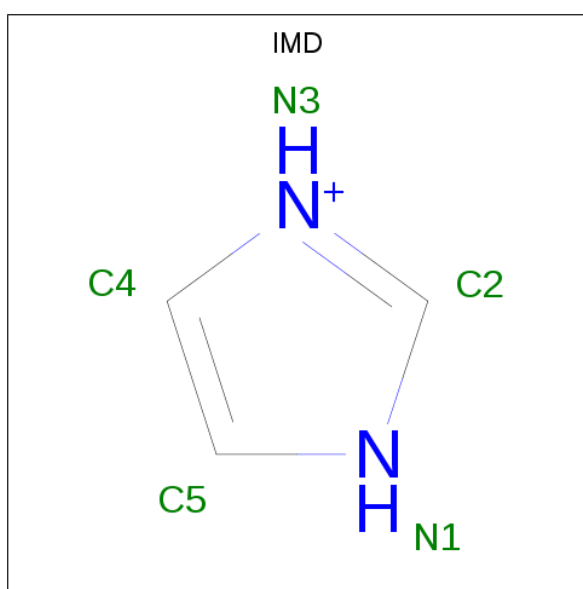
Mol	Chain	Residues	Atoms			ZeroOcc	AltConf
2	A	1	Total	O	S	0	0
			5	4	1		
2	A	1	Total	O	S	0	0
			5	4	1		

Continued on next page...

Continued from previous page...

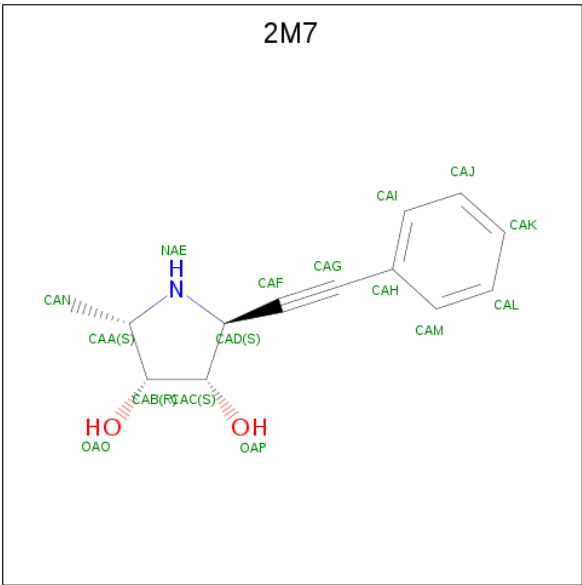
Mol	Chain	Residues	Atoms			ZeroOcc	AltConf
2	B	1	Total	O	S	0	0
			5	4	1		
2	B	1	Total	O	S	0	0
			5	4	1		
2	C	1	Total	O	S	0	0
			5	4	1		
2	D	1	Total	O	S	0	0
			5	4	1		

- Molecule 3 is IMIDAZOLE (three-letter code: IMD) (formula: $C_3H_5N_2$).



Mol	Chain	Residues	Atoms			ZeroOcc	AltConf
3	A	1	Total	C	N	0	0
			5	3	2		
3	A	1	Total	C	N	0	0
			5	3	2		
3	B	1	Total	C	N	0	0
			5	3	2		
3	B	1	Total	C	N	0	0
			5	3	2		
3	C	1	Total	C	N	0	0
			5	3	2		
3	D	1	Total	C	N	0	0
			5	3	2		

- Molecule 4 is (2S,3R,4S,5S)-2-methyl-5-(phenylethynyl)pyrrolidine-3,4-diol (three-letter code: 2M7) (formula: $C_{13}H_{15}NO_2$).



Mol	Chain	Residues	Atoms				ZeroOcc	AltConf
4	A	1	Total	C	N	O	0	0
			16	13	1	2		
4	B	1	Total	C	N	O	0	0
			16	13	1	2		
4	C	1	Total	C	N	O	0	0
			16	13	1	2		
4	D	1	Total	C	N	O	0	0
			16	13	1	2		

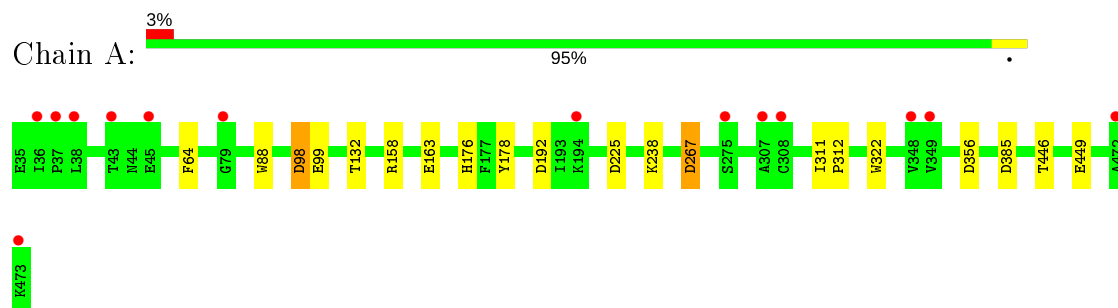
- Molecule 5 is water.

Mol	Chain	Residues	Atoms		ZeroOcc	AltConf
5	A	158	Total	O	0	0
			158	158		
5	B	209	Total	O	0	0
			209	209		
5	C	122	Total	O	0	0
			122	122		
5	D	99	Total	O	0	0
			99	99		

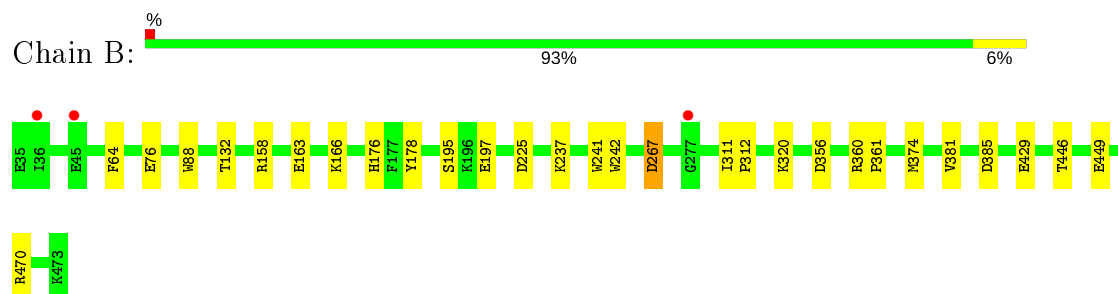
3 Residue-property plots [i](#)

These plots are drawn for all protein, RNA and DNA chains in the entry. The first graphic for a chain summarises the proportions of the various outlier classes displayed in the second graphic. The second graphic shows the sequence view annotated by issues in geometry and electron density. Residues are color-coded according to the number of geometric quality criteria for which they contain at least one outlier: green = 0, yellow = 1, orange = 2 and red = 3 or more. A red dot above a residue indicates a poor fit to the electron density ($RSRZ > 2$). Stretches of 2 or more consecutive residues without any outlier are shown as a green connector. Residues present in the sample, but not in the model, are shown in grey.

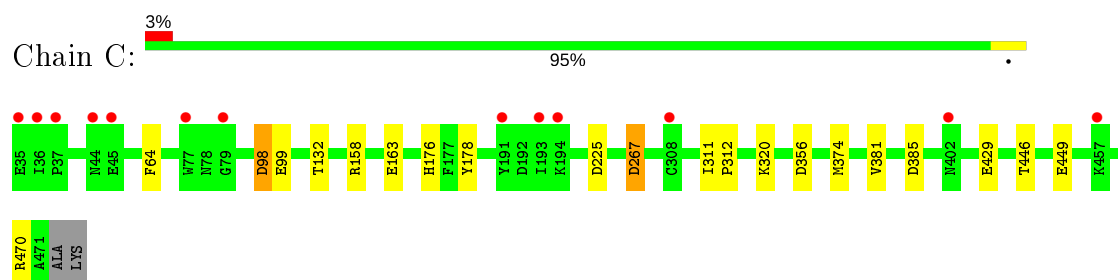
- Molecule 1: Alpha-L-fucosidase



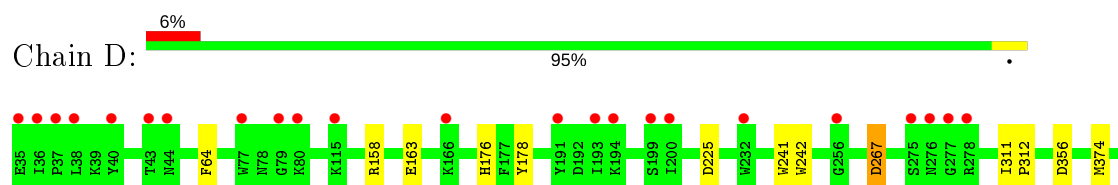
- Molecule 1: Alpha-L-fucosidase

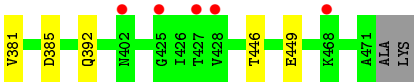


- Molecule 1: Alpha-L-fucosidase



- Molecule 1: Alpha-L-fucosidase





4 Data and refinement statistics

Property	Value	Source
Space group	P 1 21 1	Depositor
Cell constants a, b, c, α , β , γ	56.37Å 188.28Å 97.93Å 90.00° 94.10° 90.00°	Depositor
Resolution (Å)	39.25 – 1.77 39.25 – 1.77	Depositor EDS
% Data completeness (in resolution range)	95.8 (39.25-1.77) 95.8 (39.25-1.77)	Depositor EDS
R_{merge}	0.11	Depositor
R_{sym}	(Not available)	Depositor
$\langle I/\sigma(I) \rangle$ ¹	1.49 (at 1.77Å)	Xtriage
Refinement program	REFMAC 5.8.0033	Depositor
R, R_{free}	0.224 , 0.260 0.230 , 0.264	Depositor DCC
R_{free} test set	9469 reflections (5.05%)	wwPDB-VP
Wilson B-factor (Å ²)	27.0	Xtriage
Anisotropy	0.509	Xtriage
Bulk solvent k_{sol} (e/Å ³), B_{sol} (Å ²)	0.32 , 35.9	EDS
L-test for twinning ²	$\langle L \rangle = 0.48$, $\langle L^2 \rangle = 0.32$	Xtriage
Estimated twinning fraction	No twinning to report.	Xtriage
F_o, F_c correlation	0.95	EDS
Total number of atoms	14895	wwPDB-VP
Average B, all atoms (Å ²)	35.0	wwPDB-VP

Xtriage's analysis on translational NCS is as follows: *The largest off-origin peak in the Patterson function is 4.61% of the height of the origin peak. No significant pseudotranslation is detected.*

¹Intensities estimated from amplitudes.

²Theoretical values of $\langle |L| \rangle$, $\langle L^2 \rangle$ for acentric reflections are 0.5, 0.333 respectively for untwinned datasets, and 0.375, 0.2 for perfectly twinned datasets.

5 Model quality

5.1 Standard geometry

Bond lengths and bond angles in the following residue types are not validated in this section: SO4, 2M7, IMD

The Z score for a bond length (or angle) is the number of standard deviations the observed value is removed from the expected value. A bond length (or angle) with $|Z| > 5$ is considered an outlier worth inspection. RMSZ is the root-mean-square of all Z scores of the bond lengths (or angles).

Mol	Chain	Bond lengths		Bond angles	
		RMSZ	$\# Z > 5$	RMSZ	$\# Z > 5$
1	A	0.77	0/3672	0.78	3/4987 (0.1%)
1	B	0.78	0/3693	0.77	3/5009 (0.1%)
1	C	0.68	0/3659	0.74	3/4968 (0.1%)
1	D	0.71	0/3602	0.73	3/4905 (0.1%)
All	All	0.74	0/14626	0.76	12/19869 (0.1%)

There are no bond length outliers.

All (12) bond angle outliers are listed below:

Mol	Chain	Res	Type	Atoms	Z	Observed(°)	Ideal(°)
1	A	385	ASP	CB-CG-OD1	7.20	124.78	118.30
1	C	385	ASP	CB-CG-OD1	6.75	124.38	118.30
1	B	385	ASP	CB-CG-OD1	6.47	124.12	118.30
1	C	98	ASP	CB-CG-OD1	6.38	124.04	118.30
1	D	385	ASP	CB-CG-OD1	6.25	123.92	118.30
1	A	98	ASP	CB-CG-OD1	6.24	123.91	118.30
1	A	356	ASP	CB-CG-OD2	-5.62	113.24	118.30
1	C	356	ASP	CB-CG-OD1	5.47	123.23	118.30
1	D	356	ASP	CB-CG-OD1	5.31	123.08	118.30
1	B	356	ASP	CB-CG-OD2	-5.24	113.58	118.30
1	D	356	ASP	CB-CG-OD2	-5.24	113.58	118.30
1	B	356	ASP	CB-CG-OD1	5.07	122.86	118.30

There are no chirality outliers.

There are no planarity outliers.

5.2 Too-close contacts ⓘ

In the following table, the Non-H and H(model) columns list the number of non-hydrogen atoms and hydrogen atoms in the chain respectively. The H(added) column lists the number of hydrogen atoms added and optimized by MolProbity. The Clashes column lists the number of clashes within the asymmetric unit, whereas Symm-Clashes lists symmetry related clashes.

Mol	Chain	Non-H	H(model)	H(added)	Clashes	Symm-Clashes
1	A	3559	0	3393	11	0
1	B	3580	0	3446	16	0
1	C	3549	0	3389	10	0
1	D	3495	0	3262	10	0
2	A	10	0	0	0	0
2	B	10	0	0	0	0
2	C	5	0	0	0	0
2	D	5	0	0	0	0
3	A	10	0	10	0	0
3	B	10	0	10	0	0
3	C	5	0	5	0	0
3	D	5	0	5	0	0
4	A	16	0	15	1	0
4	B	16	0	15	1	0
4	C	16	0	15	0	0
4	D	16	0	15	0	0
5	A	158	0	0	0	0
5	B	209	0	0	1	0
5	C	122	0	0	0	0
5	D	99	0	0	1	0
All	All	14895	0	13580	47	0

The all-atom clashscore is defined as the number of clashes found per 1000 atoms (including hydrogen atoms). The all-atom clashscore for this structure is 2.

All (47) close contacts within the same asymmetric unit are listed below, sorted by their clash magnitude.

Atom-1	Atom-2	Interatomic distance (Å)	Clash overlap (Å)
1:B:429:GLU:OE2	1:B:470:ARG:HD2	1.89	0.73
1:C:446:THR:HG22	1:C:449:GLU:HB3	1.76	0.68
1:B:446:THR:HG22	1:B:449:GLU:HB3	1.75	0.66
1:A:446:THR:HG22	1:A:449:GLU:HB3	1.77	0.65
1:D:446:THR:HG22	1:D:449:GLU:HB3	1.79	0.65
1:C:429:GLU:OE1	1:C:470:ARG:HD2	1.98	0.64
1:B:195:SER:OG	1:B:197[A]:GLU:HG2	2.02	0.60

Continued on next page...

Continued from previous page...

Atom-1	Atom-2	Interatomic distance (Å)	Clash overlap (Å)
1:D:176:HIS:CG	1:D:225:ASP:HB3	2.38	0.58
1:B:76:GLU:OE1	1:B:320:LYS:NZ	2.31	0.58
1:B:176:HIS:CG	1:B:225:ASP:HB3	2.39	0.58
1:C:158:ARG:HD2	1:C:163:GLU:OE2	2.09	0.53
1:B:374:MET:HE1	1:B:381:VAL:HG11	1.92	0.52
1:A:158:ARG:HD2	1:A:163:GLU:OE2	2.10	0.51
1:A:176:HIS:CG	1:A:225:ASP:HB3	2.45	0.51
1:C:176:HIS:CG	1:C:225:ASP:HB3	2.46	0.51
1:C:374:MET:HE1	1:C:381:VAL:HG11	1.93	0.51
1:D:158:ARG:HD2	1:D:163:GLU:OE2	2.11	0.50
1:B:158:ARG:HD2	1:B:163:GLU:OE2	2.11	0.50
1:A:267:ASP:N	1:A:267:ASP:OD1	2.45	0.50
1:A:311:ILE:HB	1:A:312:PRO:HD3	1.94	0.50
1:D:311:ILE:HB	1:D:312:PRO:HD3	1.94	0.49
1:D:374:MET:HE1	1:D:381:VAL:HG11	1.94	0.48
1:C:98:ASP:OD1	1:C:99:GLU:N	2.46	0.48
1:D:392:GLN:NE2	5:D:622:HOH:O	2.37	0.47
1:B:237:LYS:NZ	5:B:792:HOH:O	2.48	0.47
1:A:132:THR:HA	1:A:178:TYR:HB3	1.97	0.47
1:C:267:ASP:OD1	1:C:267:ASP:N	2.46	0.47
1:B:267:ASP:N	1:B:267:ASP:OD1	2.46	0.46
1:A:88:TRP:CZ2	4:A:505:2M7:H1	2.50	0.46
1:A:98:ASP:OD1	1:A:99:GLU:N	2.50	0.45
1:B:88:TRP:CZ2	4:B:505:2M7:H5	2.53	0.43
1:B:360:ARG:HB2	1:B:361:PRO:HD2	2.01	0.43
1:B:311:ILE:HB	1:B:312:PRO:HD3	2.00	0.43
1:D:241:TRP:CD2	1:D:242:TRP:N	2.87	0.43
1:B:241:TRP:CD2	1:B:242:TRP:N	2.87	0.43
1:C:311:ILE:HB	1:C:312:PRO:HD3	2.00	0.43
1:D:267:ASP:OD1	1:D:267:ASP:N	2.47	0.43
1:C:132:THR:HA	1:C:178:TYR:HB3	2.01	0.42
1:B:178:TYR:CD1	1:B:178:TYR:C	2.92	0.42
1:B:132:THR:HA	1:B:178:TYR:HB3	2.02	0.41
1:B:446:THR:CG2	1:B:449:GLU:HB3	2.48	0.41
1:D:178:TYR:CD1	1:D:178:TYR:C	2.94	0.41
1:C:320:LYS:HE2	1:C:320:LYS:HB3	1.89	0.41
1:A:178:TYR:C	1:A:178:TYR:CD1	2.94	0.40
1:D:446:THR:CG2	1:D:449:GLU:HB3	2.50	0.40
1:A:192:ASP:OD1	1:A:238:LYS:NZ	2.48	0.40
1:A:312:PRO:HG3	1:A:322:TRP:CE2	2.56	0.40

There are no symmetry-related clashes.

5.3 Torsion angles

5.3.1 Protein backbone

In the following table, the Percentiles column shows the percent Ramachandran outliers of the chain as a percentile score with respect to all X-ray entries followed by that with respect to entries of similar resolution.

The Analysed column shows the number of residues for which the backbone conformation was analysed, and the total number of residues.

Mol	Chain	Analysed	Favoured	Allowed	Outliers	Percentiles	
1	A	439/439 (100%)	424 (97%)	15 (3%)	0	100	100
1	B	439/439 (100%)	427 (97%)	12 (3%)	0	100	100
1	C	436/439 (99%)	423 (97%)	13 (3%)	0	100	100
1	D	435/439 (99%)	422 (97%)	13 (3%)	0	100	100
All	All	1749/1756 (100%)	1696 (97%)	53 (3%)	0	100	100

There are no Ramachandran outliers to report.

5.3.2 Protein sidechains

In the following table, the Percentiles column shows the percent sidechain outliers of the chain as a percentile score with respect to all X-ray entries followed by that with respect to entries of similar resolution.

The Analysed column shows the number of residues for which the sidechain conformation was analysed, and the total number of residues.

Mol	Chain	Analysed	Rotameric	Outliers	Percentiles	
1	A	365/374 (98%)	363 (100%)	2 (0%)	88	86
1	B	371/374 (99%)	368 (99%)	3 (1%)	81	76
1	C	366/374 (98%)	364 (100%)	2 (0%)	88	86
1	D	351/374 (94%)	349 (99%)	2 (1%)	86	82
All	All	1453/1496 (97%)	1444 (99%)	9 (1%)	86	82

All (9) residues with a non-rotameric sidechain are listed below:

Mol	Chain	Res	Type
1	A	64	PHE
1	A	267	ASP

Continued on next page...

Continued from previous page...

Mol	Chain	Res	Type
1	B	64	PHE
1	B	166	LYS
1	B	267	ASP
1	C	64	PHE
1	C	267	ASP
1	D	64	PHE
1	D	267	ASP

Some sidechains can be flipped to improve hydrogen bonding and reduce clashes. There are no such sidechains identified.

5.3.3 RNA [i](#)

There are no RNA molecules in this entry.

5.4 Non-standard residues in protein, DNA, RNA chains [i](#)

There are no non-standard protein/DNA/RNA residues in this entry.

5.5 Carbohydrates [i](#)

There are no carbohydrates in this entry.

5.6 Ligand geometry [i](#)

16 ligands are modelled in this entry.

In the following table, the Counts columns list the number of bonds (or angles) for which Mogul statistics could be retrieved, the number of bonds (or angles) that are observed in the model and the number of bonds (or angles) that are defined in the Chemical Component Dictionary. The Link column lists molecule types, if any, to which the group is linked. The Z score for a bond length (or angle) is the number of standard deviations the observed value is removed from the expected value. A bond length (or angle) with $|Z| > 2$ is considered an outlier worth inspection. RMSZ is the root-mean-square of all Z scores of the bond lengths (or angles).

Mol	Type	Chain	Res	Link	Bond lengths			Bond angles		
					Counts	RMSZ	$\# Z > 2$	Counts	RMSZ	$\# Z > 2$
3	IMD	C	502	-	3,5,5	0.21	0	4,5,5	0.57	0
2	SO4	B	501	-	4,4,4	0.38	0	6,6,6	0.42	0
3	IMD	B	504	-	3,5,5	0.41	0	4,5,5	0.74	0

Mol	Type	Chain	Res	Link	Bond lengths			Bond angles		
					Counts	RMSZ	# Z > 2	Counts	RMSZ	# Z > 2
4	2M7	C	503	-	17,17,17	5.62	6 (35%)	16,23,23	1.47	3 (18%)
4	2M7	B	505	-	17,17,17	3.30	6 (35%)	16,23,23	1.37	3 (18%)
4	2M7	A	505	-	17,17,17	2.06	3 (17%)	16,23,23	1.19	1 (6%)
3	IMD	A	503	-	3,5,5	0.50	0	4,5,5	0.28	0
3	IMD	D	502	-	3,5,5	0.25	0	4,5,5	0.69	0
3	IMD	A	504	-	3,5,5	0.41	0	4,5,5	0.56	0
2	SO4	A	501	-	4,4,4	0.38	0	6,6,6	0.59	0
4	2M7	D	503	-	17,17,17	4.48	3 (17%)	16,23,23	1.03	2 (12%)
2	SO4	C	501	-	4,4,4	0.46	0	6,6,6	0.27	0
3	IMD	B	503	-	3,5,5	0.56	0	4,5,5	0.41	0
2	SO4	A	502	-	4,4,4	0.48	0	6,6,6	0.49	0
2	SO4	D	501	-	4,4,4	0.41	0	6,6,6	0.27	0
2	SO4	B	502	-	4,4,4	0.44	0	6,6,6	0.42	0

In the following table, the Chirals column lists the number of chiral outliers, the number of chiral centers analysed, the number of these observed in the model and the number defined in the Chemical Component Dictionary. Similar counts are reported in the Torsion and Rings columns. '-' means no outliers of that kind were identified.

Mol	Type	Chain	Res	Link	Chirals	Torsions	Rings
3	IMD	C	502	-	-	-	0/1/1/1
3	IMD	B	504	-	-	-	0/1/1/1
4	2M7	B	505	-	-	1/3/21/21	0/2/2/2
4	2M7	A	505	-	-	1/3/21/21	0/2/2/2
3	IMD	D	502	-	-	-	0/1/1/1
3	IMD	A	504	-	-	-	0/1/1/1
4	2M7	C	503	-	-	1/3/21/21	0/2/2/2
4	2M7	D	503	-	-	1/3/21/21	0/2/2/2
3	IMD	A	503	-	-	-	0/1/1/1
3	IMD	B	503	-	-	-	0/1/1/1

All (18) bond length outliers are listed below:

Mol	Chain	Res	Type	Atoms	Z	Observed(Å)	Ideal(Å)
4	C	503	2M7	CAG-CAF	-22.07	0.96	1.19
4	D	503	2M7	CAG-CAF	-17.64	1.01	1.19
4	B	505	2M7	CAG-CAF	-9.52	1.09	1.19
4	A	505	2M7	CAG-CAF	-6.97	1.12	1.19
4	B	505	2M7	CAD-CAF	-6.07	1.35	1.48
4	B	505	2M7	CAH-CAG	4.74	1.55	1.44
4	C	503	2M7	CAH-CAG	4.53	1.55	1.44

Continued on next page...

Continued from previous page...

Mol	Chain	Res	Type	Atoms	Z	Observed(Å)	Ideal(Å)
4	B	505	2M7	CAC-CAD	-3.94	1.47	1.54
4	D	503	2M7	OAD-CAB	3.24	1.50	1.43
4	A	505	2M7	CAB-CAA	-2.96	1.49	1.53
4	C	503	2M7	CAD-CAF	-2.94	1.42	1.48
4	B	505	2M7	CAD-NAE	2.68	1.53	1.48
4	D	503	2M7	CAD-NAE	2.53	1.53	1.48
4	C	503	2M7	CAD-NAE	2.49	1.52	1.48
4	B	505	2M7	OAD-CAB	2.47	1.48	1.43
4	A	505	2M7	CAC-CAD	-2.29	1.50	1.54
4	C	503	2M7	OAP-CAC	-2.12	1.38	1.43
4	C	503	2M7	OAD-CAB	2.04	1.47	1.43

All (9) bond angle outliers are listed below:

Mol	Chain	Res	Type	Atoms	Z	Observed(°)	Ideal(°)
4	C	503	2M7	CAM-CAH-CAG	3.32	126.62	120.78
4	C	503	2M7	CAI-CAH-CAG	-3.12	115.27	120.78
4	C	503	2M7	CAN-CAA-NAE	2.94	115.14	111.70
4	B	505	2M7	CAI-CAH-CAG	-2.49	116.38	120.78
4	B	505	2M7	CAH-CAG-CAF	-2.49	173.77	177.33
4	D	503	2M7	CAN-CAA-CAB	-2.31	109.38	114.36
4	B	505	2M7	OAD-CAB-CAA	-2.19	105.80	111.16
4	A	505	2M7	OAP-CAC-CAD	2.15	115.54	110.78
4	D	503	2M7	CAB-CAC-CAD	-2.06	100.47	103.20

There are no chirality outliers.

All (4) torsion outliers are listed below:

Mol	Chain	Res	Type	Atoms
4	C	503	2M7	CAD-CAF-CAG-CAH
4	A	505	2M7	CAD-CAF-CAG-CAH
4	B	505	2M7	CAD-CAF-CAG-CAH
4	D	503	2M7	CAD-CAF-CAG-CAH

There are no ring outliers.

2 monomers are involved in 2 short contacts:

Mol	Chain	Res	Type	Clashes	Symm-Clashes
4	B	505	2M7	1	0
4	A	505	2M7	1	0

5.7 Other polymers

There are no such residues in this entry.

5.8 Polymer linkage issues

There are no chain breaks in this entry.

6 Fit of model and data ⓘ

6.1 Protein, DNA and RNA chains ⓘ

In the following table, the column labelled ‘#RSRZ> 2’ contains the number (and percentage) of RSRZ outliers, followed by percent RSRZ outliers for the chain as percentile scores relative to all X-ray entries and entries of similar resolution. The OWAB column contains the minimum, median, 95th percentile and maximum values of the occupancy-weighted average B-factor per residue. The column labelled ‘Q< 0.9’ lists the number of (and percentage) of residues with an average occupancy less than 0.9.

Mol	Chain	Analysed	<RSRZ>	#RSRZ>2	OWAB(Å ²)	Q<0.9
1	A	439/439 (100%)	0.13	14 (3%) 47 46	17, 32, 57, 88	1 (0%)
1	B	439/439 (100%)	-0.03	3 (0%) 87 88	18, 29, 47, 79	1 (0%)
1	C	437/439 (99%)	0.14	13 (2%) 50 48	23, 36, 53, 81	1 (0%)
1	D	437/439 (99%)	0.40	28 (6%) 19 18	24, 39, 60, 84	1 (0%)
All	All	1752/1756 (99%)	0.16	58 (3%) 46 45	17, 34, 56, 88	4 (0%)

All (58) RSRZ outliers are listed below:

Mol	Chain	Res	Type	RSRZ
1	A	37	PRO	6.2
1	D	36	ILE	6.1
1	C	36	ILE	6.0
1	C	37	PRO	5.4
1	A	36	ILE	4.3
1	D	37	PRO	4.1
1	D	43	THR	4.0
1	D	232	TRP	3.8
1	B	45	GLU	3.8
1	C	457	LYS	3.6
1	A	473	LYS	3.5
1	A	38	LEU	3.3
1	D	79	GLY	3.3
1	A	194	LYS	3.3
1	C	35	GLU	3.2
1	B	36	ILE	3.1
1	D	277	GLY	3.1
1	D	44	ASN	3.1
1	D	275	SER	3.1
1	A	45	GLU	3.0
1	D	115	LYS	3.0

Continued on next page...

Continued from previous page...

Mol	Chain	Res	Type	RSRZ
1	D	402	ASN	2.9
1	D	193	ILE	2.9
1	C	191	TYR	2.7
1	D	191	TYR	2.7
1	D	256	GLY	2.7
1	A	349	VAL	2.7
1	A	472	ALA	2.5
1	C	44	ASN	2.5
1	D	80	LYS	2.5
1	C	308[A]	CYS	2.5
1	A	348	VAL	2.5
1	D	35	GLU	2.5
1	D	38	LEU	2.5
1	C	45	GLU	2.4
1	D	278	ARG	2.4
1	D	194	LYS	2.4
1	A	307	ALA	2.3
1	B	277	GLY	2.3
1	C	194	LYS	2.3
1	D	428	VAL	2.3
1	C	193	ILE	2.3
1	A	43	THR	2.3
1	D	77	TRP	2.3
1	D	199	SER	2.3
1	D	468	LYS	2.3
1	A	308	CYS	2.3
1	D	425	GLY	2.2
1	C	77	TRP	2.2
1	D	200	ILE	2.2
1	D	40	TYR	2.1
1	A	79	GLY	2.1
1	A	275	SER	2.1
1	C	402	ASN	2.1
1	D	276	ASN	2.0
1	C	79	GLY	2.0
1	D	166	LYS	2.0
1	D	427	THR	2.0

6.2 Non-standard residues in protein, DNA, RNA chains ⓘ

There are no non-standard protein/DNA/RNA residues in this entry.

6.3 Carbohydrates [i](#)

There are no carbohydrates in this entry.

6.4 Ligands [i](#)

In the following table, the Atoms column lists the number of modelled atoms in the group and the number defined in the chemical component dictionary. The B-factors column lists the minimum, median, 95th percentile and maximum values of B factors of atoms in the group. The column labelled 'Q< 0.9' lists the number of atoms with occupancy less than 0.9.

Mol	Type	Chain	Res	Atoms	RSCC	RSR	B-factors(\AA^2)	Q<0.9
2	SO4	C	501	5/5	0.83	0.34	96,99,108,110	0
3	IMD	B	504	5/5	0.84	0.14	42,43,47,50	0
3	IMD	D	502	5/5	0.85	0.27	50,53,57,59	0
3	IMD	A	504	5/5	0.91	0.13	43,45,46,47	0
2	SO4	A	502	5/5	0.91	0.26	77,78,87,94	0
3	IMD	B	503	5/5	0.92	0.15	38,38,42,43	0
4	2M7	C	503	16/16	0.92	0.12	27,31,66,66	0
2	SO4	D	501	5/5	0.92	0.16	83,83,94,98	0
2	SO4	B	502	5/5	0.92	0.17	39,42,43,45	5
4	2M7	B	505	16/16	0.93	0.13	22,25,54,55	0
4	2M7	A	505	16/16	0.93	0.14	31,33,60,63	0
4	2M7	D	503	16/16	0.93	0.12	23,32,50,51	0
3	IMD	A	503	5/5	0.93	0.13	37,39,42,45	0
2	SO4	A	501	5/5	0.95	0.20	66,66,73,74	0
3	IMD	C	502	5/5	0.96	0.12	44,47,48,49	0
2	SO4	B	501	5/5	0.97	0.21	61,62,65,74	0

6.5 Other polymers [i](#)

There are no such residues in this entry.