



# Full wwPDB X-ray Structure Validation Report ⓘ

May 22, 2020 – 04:32 pm BST

PDB ID : 2PDR  
Title : 1.7 Angstrom Crystal Structure of the Photo-excited Blue-light Photoreceptor Vivid  
Authors : Zoltowski, B.D.; Crane, B.R.; Bilwes, A.M.  
Deposited on : 2007-04-01  
Resolution : 1.70 Å(reported)

This is a Full wwPDB X-ray Structure Validation Report for a publicly released PDB entry.

We welcome your comments at [validation@mail.wwpdb.org](mailto:validation@mail.wwpdb.org)

A user guide is available at

<https://www.wwpdb.org/validation/2017/XrayValidationReportHelp>

with specific help available everywhere you see the ⓘ symbol.

---

The following versions of software and data (see [references ⓘ](#)) were used in the production of this report:

MolProbity : 4.02b-467  
Mogul : 1.8.5 (274361), CSD as541be (2020)  
Xtriage (Phenix) : 1.13  
EDS : 2.11  
buster-report : 1.1.7 (2018)  
Percentile statistics : 20191225.v01 (using entries in the PDB archive December 25th 2019)  
Refmac : 5.8.0158  
CCP4 : 7.0.044 (Gargrove)  
Ideal geometry (proteins) : Engh & Huber (2001)  
Ideal geometry (DNA, RNA) : Parkinson et al. (1996)  
Validation Pipeline (wwPDB-VP) : 2.11

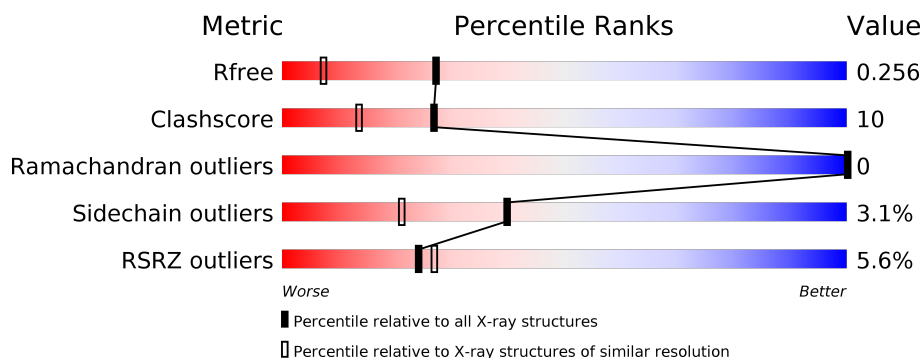
# 1 Overall quality at a glance

The following experimental techniques were used to determine the structure:

## *X-RAY DIFFRACTION*

The reported resolution of this entry is 1.70 Å.

Percentile scores (ranging between 0-100) for global validation metrics of the entry are shown in the following graphic. The table shows the number of entries on which the scores are based.



Metric	Whole archive (#Entries)	Similar resolution (#Entries, resolution range(Å))
$R_{free}$	130704	4298 (1.70-1.70)
Clashscore	141614	4695 (1.70-1.70)
Ramachandran outliers	138981	4610 (1.70-1.70)
Sidechain outliers	138945	4610 (1.70-1.70)
RSRZ outliers	127900	4222 (1.70-1.70)

The table below summarises the geometric issues observed across the polymeric chains and their fit to the electron density. The red, orange, yellow and green segments on the lower bar indicate the fraction of residues that contain outliers for  $\geq 3$ , 2, 1 and 0 types of geometric quality criteria respectively. A grey segment represents the fraction of residues that are not modelled. The numeric value for each fraction is indicated below the corresponding segment, with a dot representing fractions  $\leq 5\%$ . The upper red bar (where present) indicates the fraction of residues that have poor fit to the electron density. The numeric value is given above the bar.

Mol	Chain	Length	Quality of chain
1	A	149	
1	B	149	
1	C	149	
1	D	149	

## 2 Entry composition

There are 3 unique types of molecules in this entry. The entry contains 5912 atoms, of which 0 are hydrogens and 0 are deuteriums.

In the tables below, the ZeroOcc column contains the number of atoms modelled with zero occupancy, the AltConf column contains the number of residues with at least one atom in alternate conformation and the Trace column contains the number of residues modelled with at most 2 atoms.

- Molecule 1 is a protein called Vivid PAS protein VVD.

Mol	Chain	Residues	Atoms					ZeroOcc	AltConf	Trace
1	A	147	Total	C	N	O	S	0	11	0
			1247	785	212	237	13			
1	B	147	Total	C	N	O	S	0	11	0
			1247	785	212	237	13			
1	C	147	Total	C	N	O	S	0	11	0
			1247	785	212	237	13			
1	D	147	Total	C	N	O	S	0	11	0
			1247	785	212	237	13			

There are 4 discrepancies between the modelled and reference sequences:

Chain	Residue	Modelled	Actual	Comment	Reference
A	36	MET	-	INITIATING METHIONINE	UNP Q9C3Y6
B	36	MET	-	INITIATING METHIONINE	UNP Q9C3Y6
C	36	MET	-	INITIATING METHIONINE	UNP Q9C3Y6
D	36	MET	-	INITIATING METHIONINE	UNP Q9C3Y6

- Molecule 2 is FLAVIN-ADENINE DINUCLEOTIDE (three-letter code: FAD) (formula:  $C_{27}H_{33}N_9O_{15}P_2$ ).



Mol	Chain	Residues	Atoms				ZeroOcc	AltConf	
2	A	1	Total 106	C 54	N 18	O 30	P 4	0	1
2	B	1	Total 106	C 54	N 18	O 30	P 4	0	1
2	C	1	Total 106	C 54	N 18	O 30	P 4	0	1
2	D	1	Total 106	C 54	N 18	O 30	P 4	0	1

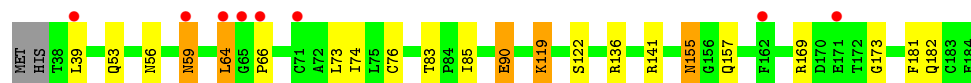
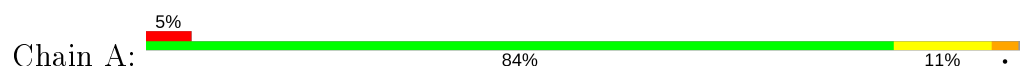
- Molecule 3 is water.

Mol	Chain	Residues	Atoms	ZeroOcc	AltConf
3	A	138	Total O 138 138	0	0
3	B	120	Total O 120 120	0	0
3	C	123	Total O 123 123	0	0
3	D	119	Total O 119 119	0	0

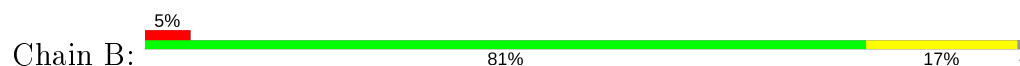
### 3 Residue-property plots [i](#)

These plots are drawn for all protein, RNA and DNA chains in the entry. The first graphic for a chain summarises the proportions of the various outlier classes displayed in the second graphic. The second graphic shows the sequence view annotated by issues in geometry and electron density. Residues are color-coded according to the number of geometric quality criteria for which they contain at least one outlier: green = 0, yellow = 1, orange = 2 and red = 3 or more. A red dot above a residue indicates a poor fit to the electron density ( $RSRZ > 2$ ). Stretches of 2 or more consecutive residues without any outlier are shown as a green connector. Residues present in the sample, but not in the model, are shown in grey.

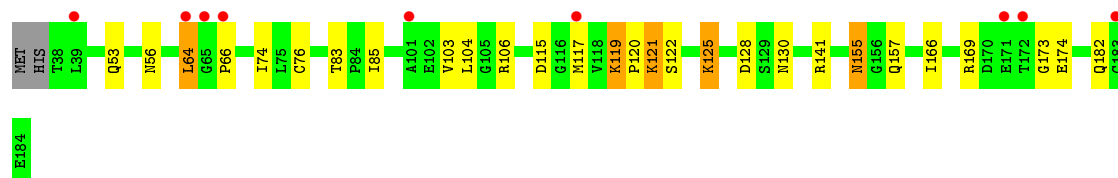
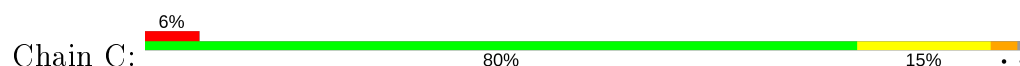
- Molecule 1: Vivid PAS protein VVD



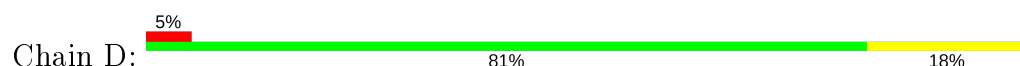
- Molecule 1: Vivid PAS protein VVD



- Molecule 1: Vivid PAS protein VVD



- Molecule 1: Vivid PAS protein VVD



## 4 Data and refinement statistics

Property	Value	Source
Space group	P 1 21 1	Depositor
Cell constants a, b, c, $\alpha$ , $\beta$ , $\gamma$	62.97Å 81.13Å 64.73Å 90.00° 89.94° 90.00°	Depositor
Resolution (Å)	30.00 – 1.70 29.35 – 1.70	Depositor EDS
% Data completeness (in resolution range)	82.7 (30.00-1.70) 82.4 (29.35-1.70)	Depositor EDS
$R_{merge}$	0.10	Depositor
$R_{sym}$	(Not available)	Depositor
$\langle I/\sigma(I) \rangle$ <sup>1</sup>	2.14 (at 1.70Å)	Xtriage
Refinement program	CNS	Depositor
R, $R_{free}$	0.226 , 0.249 0.234 , 0.256	Depositor DCC
$R_{free}$ test set	6327 reflections (10.11%)	wwPDB-VP
Wilson B-factor (Å <sup>2</sup> )	15.1	Xtriage
Anisotropy	0.784	Xtriage
Bulk solvent $k_{sol}$ (e/Å <sup>3</sup> ), $B_{sol}$ (Å <sup>2</sup> )	0.36 , 40.9	EDS
L-test for twinning <sup>2</sup>	$\langle  L  \rangle = 0.49$ , $\langle L^2 \rangle = 0.32$	Xtriage
Estimated twinning fraction	0.000 for -l,k,h 0.457 for h,-k,-l 0.000 for -l,-k,-h	Xtriage
$F_o, F_c$ correlation	0.94	EDS
Total number of atoms	5912	wwPDB-VP
Average B, all atoms (Å <sup>2</sup> )	21.0	wwPDB-VP

Xtriage's analysis on translational NCS is as follows: *The analyses of the Patterson function reveals a significant off-origin peak that is 39.41 % of the origin peak, indicating pseudo-translational symmetry. The chance of finding a peak of this or larger height randomly in a structure without pseudo-translational symmetry is equal to 3.1883e-04. The detected translational NCS is most likely also responsible for the elevated intensity ratio.*

<sup>1</sup>Intensities estimated from amplitudes.

<sup>2</sup>Theoretical values of  $\langle |L| \rangle$ ,  $\langle L^2 \rangle$  for acentric reflections are 0.5, 0.333 respectively for untwinned datasets, and 0.375, 0.2 for perfectly twinned datasets.

## 5 Model quality [i](#)

### 5.1 Standard geometry [i](#)

Bond lengths and bond angles in the following residue types are not validated in this section: FAD

The Z score for a bond length (or angle) is the number of standard deviations the observed value is removed from the expected value. A bond length (or angle) with  $|Z| > 5$  is considered an outlier worth inspection. RMSZ is the root-mean-square of all Z scores of the bond lengths (or angles).

Mol	Chain	Bond lengths		Bond angles	
		RMSZ	$\# Z  > 5$	RMSZ	$\# Z  > 5$
1	A	0.36	0/1270	0.60	0/1719
1	B	0.34	0/1270	0.65	0/1719
1	C	0.35	0/1270	0.60	0/1719
1	D	0.34	0/1270	0.64	0/1719
All	All	0.35	0/5080	0.62	0/6876

There are no bond length outliers.

There are no bond angle outliers.

There are no chirality outliers.

There are no planarity outliers.

### 5.2 Too-close contacts [i](#)

In the following table, the Non-H and H(model) columns list the number of non-hydrogen atoms and hydrogen atoms in the chain respectively. The H(added) column lists the number of hydrogen atoms added and optimized by MolProbity. The Clashes column lists the number of clashes within the asymmetric unit, whereas Symm-Clashes lists symmetry related clashes.

Mol	Chain	Non-H	H(model)	H(added)	Clashes	Symm-Clashes
1	A	1247	0	1232	29	0
1	B	1247	0	1232	30	0
1	C	1247	0	1232	32	0
1	D	1247	0	1232	29	0
2	A	106	0	62	3	0
2	B	106	0	62	5	0
2	C	106	0	62	4	0
2	D	106	0	62	4	0
3	A	138	0	0	0	0

*Continued on next page...*

*Continued from previous page...*

Mol	Chain	Non-H	H(model)	H(added)	Clashes	Symm-Clashes
3	B	120	0	0	0	0
3	C	123	0	0	0	0
3	D	119	0	0	0	0
All	All	5912	0	5176	108	0

The all-atom clashscore is defined as the number of clashes found per 1000 atoms (including hydrogen atoms). The all-atom clashscore for this structure is 10.

All (108) close contacts within the same asymmetric unit are listed below, sorted by their clash magnitude.

Atom-1	Atom-2	Interatomic distance (Å)	Clash overlap (Å)
1:C:125:LYS:H	1:C:125:LYS:HE2	1.03	1.12
1:C:53:GLN:HE22	1:C:169:ARG:H	1.11	0.97
1:C:125:LYS:HE2	1:C:125:LYS:N	1.81	0.96
1:B:39:LEU:H	1:B:80:GLN:HE22	0.98	0.96
1:A:66[B]:PRO:HB2	1:D:56:ASN:OD1	1.65	0.95
1:A:119:LYS:HG2	1:A:122:SER:HB3	1.49	0.92
1:B:53:GLN:HE22	1:B:169:ARG:H	1.14	0.91
1:D:53:GLN:HE22	1:D:169:ARG:H	1.14	0.90
1:C:125:LYS:H	1:C:125:LYS:CE	1.84	0.88
1:D:39:LEU:H	1:D:80:GLN:HE22	0.96	0.88
1:C:119:LYS:HG2	1:C:122:SER:HB3	1.60	0.83
1:A:136:ARG:HB3	1:A:136:ARG:HH11	1.42	0.82
1:A:53:GLN:HE22	1:A:169:ARG:H	1.26	0.81
1:B:56:ASN:OD1	1:C:66[B]:PRO:HB2	1.79	0.81
1:D:39:LEU:H	1:D:80:GLN:NE2	1.76	0.80
1:B:39:LEU:H	1:B:80:GLN:NE2	1.79	0.79
1:A:90:GLU:CD	1:A:90:GLU:H	1.85	0.79
1:A:66[B]:PRO:CB	1:D:56:ASN:OD1	2.34	0.76
1:B:39:LEU:N	1:B:80:GLN:HE22	1.82	0.73
1:A:66[B]:PRO:CB	1:D:56:ASN:HA	2.18	0.73
1:D:39:LEU:N	1:D:80:GLN:HE22	1.80	0.71
1:B:56:ASN:OD1	1:C:66[B]:PRO:CB	2.40	0.70
1:C:76:CYS:HB3	1:C:83[A]:THR:HG22	1.75	0.68
1:A:119:LYS:H	1:A:119:LYS:HE2	1.59	0.68
1:A:119:LYS:CD	1:A:119:LYS:H	2.07	0.67
1:C:64[B]:LEU:HD22	1:C:166:ILE:CD1	2.25	0.67
1:D:76:CYS:HB3	1:D:83[A]:THR:HG22	1.78	0.66
1:A:66[B]:PRO:HB2	1:D:56:ASN:HA	1.77	0.66
1:C:119:LYS:CG	1:C:122:SER:HB3	2.26	0.65
1:B:133:ASN:HD21	1:B:137:LYS:HE3	1.64	0.60

*Continued on next page...*



*Continued from previous page...*

Atom-1	Atom-2	Interatomic distance (Å)	Clash overlap (Å)
1:D:74:ILE:HD11	2:D:204[A]:FAD:H6	1.83	0.60
1:A:119:LYS:H	1:A:119:LYS:CE	2.14	0.59
1:C:120:PRO:C	1:C:121:LYS:HG2	2.23	0.59
1:B:76:CYS:HB3	1:B:83[B]:THR:HG22	1.85	0.58
1:C:64[B]:LEU:HD22	1:C:166:ILE:HD12	1.86	0.58
1:B:76:CYS:HB3	1:B:83[A]:THR:HG22	1.86	0.56
1:C:155:ASN:ND2	1:C:157:GLN:H	2.04	0.56
1:B:74:ILE:HD11	2:B:202[A]:FAD:H6	1.87	0.56
1:C:74:ILE:HD11	2:C:203[A]:FAD:H6	1.88	0.56
1:A:155:ASN:ND2	1:A:157:GLN:H	2.05	0.54
1:A:83[B]:THR:HG23	1:A:83[B]:THR:O	2.07	0.54
1:C:104:LEU:O	1:C:106:ARG:NH2	2.41	0.54
1:A:136:ARG:CB	1:A:136:ARG:HH11	2.18	0.53
1:C:115:ASP:O	1:C:117:MET:HG2	2.09	0.53
1:B:51:LEU:HD22	1:B:67[B]:VAL:HG23	1.90	0.53
1:B:133:ASN:ND2	1:B:137:LYS:HE3	2.23	0.52
1:C:169:ARG:HD3	1:C:173:GLY:O	2.10	0.52
1:B:64[A]:LEU:HD21	1:B:67[A]:VAL:HG21	1.91	0.52
1:C:74:ILE:HD11	2:C:203[A]:FAD:C6	2.40	0.52
1:D:74:ILE:HD11	2:D:204[A]:FAD:C6	2.39	0.52
1:A:74:ILE:HD11	2:A:201[A]:FAD:C6	2.40	0.52
1:B:74:ILE:HD11	2:B:202[A]:FAD:C6	2.40	0.51
1:B:65[A]:GLY:O	1:B:67[A]:VAL:HG13	2.11	0.51
1:D:137:LYS:HD2	1:D:141:ARG:NH2	2.26	0.51
1:B:66[B]:PRO:HB2	1:C:56:ASN:HA	1.93	0.50
1:A:74:ILE:HD11	2:A:201[A]:FAD:H6	1.93	0.50
1:A:64[A]:LEU:HD11	1:A:181:PHE:CE2	2.46	0.50
1:C:121:LYS:HE3	2:C:203[A]:FAD:O2A	2.12	0.49
1:A:141:ARG:HH21	1:A:141:ARG:HG3	1.77	0.49
1:B:171:GLU:H	1:B:171:GLU:CD	2.16	0.49
1:C:119:LYS:NZ	1:C:119:LYS:H	2.11	0.49
1:C:64[B]:LEU:HD22	1:C:166:ILE:HD11	1.96	0.48
1:A:56:ASN:OD1	1:D:66[A]:PRO:HB2	2.13	0.48
1:A:169:ARG:HD3	1:A:173:GLY:O	2.14	0.48
1:C:141:ARG:HH21	1:C:141:ARG:HG3	1.79	0.48
1:C:103:VAL:HG23	1:C:104:LEU:N	2.29	0.47
1:D:64[A]:LEU:HD22	1:D:166:ILE:CD1	2.44	0.47
1:A:119:LYS:H	1:A:119:LYS:HD3	1.80	0.47
1:A:59:ASN:HD22	1:A:59:ASN:HA	1.52	0.47
1:B:176:ARG:HH21	1:B:176:ARG:HG2	1.80	0.47
1:D:109:ARG:NH2	1:D:120:PRO:HG3	2.30	0.47

*Continued on next page...*

*Continued from previous page...*

Atom-1	Atom-2	Interatomic distance (Å)	Clash overlap (Å)
1:A:66[B]:PRO:HB3	1:D:56:ASN:HA	1.98	0.46
1:B:73:LEU:HD12	1:B:73:LEU:C	2.36	0.46
1:B:139:ILE:HD13	2:B:202[A]:FAD:HM81	1.98	0.46
1:A:90:GLU:CD	1:A:90:GLU:N	2.63	0.45
1:A:74:ILE:HD12	1:A:85:ILE:HG12	1.99	0.45
1:B:135:MET:O	1:B:139:ILE:HG13	2.17	0.45
1:C:121:LYS:HE3	2:C:203[B]:FAD:O2A	2.15	0.45
1:C:119:LYS:HG2	1:C:122:SER:CB	2.38	0.45
1:B:76:CYS:SG	2:B:202[A]:FAD:HM72	2.57	0.44
1:A:76:CYS:SG	2:A:201[A]:FAD:HM72	2.58	0.44
1:C:128:ASP:OD1	1:C:130:ASN:HB3	2.18	0.44
1:D:124:ARG:NE	1:D:132:ILE:HD13	2.32	0.44
1:B:171:GLU:CD	1:B:171:GLU:N	2.70	0.44
1:D:171:GLU:H	1:D:171:GLU:CD	2.21	0.44
1:A:73:LEU:HD12	1:A:73:LEU:C	2.38	0.44
1:B:66[B]:PRO:CB	1:C:56:ASN:HA	2.48	0.44
1:C:104:LEU:O	1:C:106:ARG:HD2	2.19	0.43
1:C:106:ARG:HD2	1:C:106:ARG:N	2.33	0.43
1:D:59:ASN:O	1:D:61[A]:GLN:HG3	2.18	0.43
1:D:73:LEU:C	1:D:73:LEU:HD12	2.39	0.43
1:D:59:ASN:O	1:D:61[B]:GLN:HG3	2.18	0.43
1:D:176:ARG:HH21	1:D:176:ARG:HG2	1.85	0.42
1:B:139:ILE:HD13	2:B:202[B]:FAD:HM81	2.00	0.42
1:A:66[B]:PRO:HB2	1:D:56:ASN:CG	2.37	0.42
1:B:124:ARG:NE	1:B:132:ILE:HD13	2.34	0.42
1:D:65[A]:GLY:O	1:D:67[A]:VAL:HG13	2.20	0.42
1:D:76:CYS:SG	2:D:204[A]:FAD:HM72	2.59	0.42
1:C:74:ILE:HD12	1:C:85:ILE:HG12	2.02	0.42
1:D:171:GLU:CD	1:D:171:GLU:N	2.73	0.42
1:B:176:ARG:NH2	1:B:176:ARG:HG2	2.35	0.41
1:B:115:ASP:O	1:B:117:MET:HG3	2.19	0.41
1:B:66[A]:PRO:HB2	1:C:56:ASN:OD1	2.21	0.41
1:D:120:PRO:O	1:D:121:LYS:HB2	2.21	0.41
1:D:139:ILE:HD13	2:D:204[A]:FAD:HM81	2.02	0.41
1:D:64[A]:LEU:HD22	1:D:166:ILE:HD12	2.03	0.41
1:B:169:ARG:HD3	1:B:173:GLY:O	2.21	0.41
1:A:136:ARG:NH1	1:A:136:ARG:HB3	2.22	0.40

There are no symmetry-related clashes.

## 5.3 Torsion angles

### 5.3.1 Protein backbone

In the following table, the Percentiles column shows the percent Ramachandran outliers of the chain as a percentile score with respect to all X-ray entries followed by that with respect to entries of similar resolution.

The Analysed column shows the number of residues for which the backbone conformation was analysed, and the total number of residues.

Mol	Chain	Analysed	Favoured	Allowed	Outliers	Percentiles	
1	A	156/149 (105%)	152 (97%)	4 (3%)	0	100	100
1	B	156/149 (105%)	151 (97%)	5 (3%)	0	100	100
1	C	156/149 (105%)	152 (97%)	4 (3%)	0	100	100
1	D	156/149 (105%)	153 (98%)	3 (2%)	0	100	100
All	All	624/596 (105%)	608 (97%)	16 (3%)	0	100	100

There are no Ramachandran outliers to report.

### 5.3.2 Protein sidechains

In the following table, the Percentiles column shows the percent sidechain outliers of the chain as a percentile score with respect to all X-ray entries followed by that with respect to entries of similar resolution.

The Analysed column shows the number of residues for which the sidechain conformation was analysed, and the total number of residues.

Mol	Chain	Analysed	Rotameric	Outliers	Percentiles	
1	A	140/132 (106%)	131 (94%)	9 (6%)	17	5
1	B	140/132 (106%)	138 (99%)	2 (1%)	67	53
1	C	140/132 (106%)	131 (94%)	9 (6%)	17	5
1	D	140/132 (106%)	138 (99%)	2 (1%)	67	53
All	All	560/528 (106%)	538 (96%)	22 (4%)	40	13

All (22) residues with a non-rotameric sidechain are listed below:

Mol	Chain	Res	Type
1	A	39	LEU
1	A	59	ASN

*Continued on next page...*

*Continued from previous page...*

Mol	Chain	Res	Type
1	A	64[A]	LEU
1	A	64[B]	LEU
1	A	90	GLU
1	A	119	LYS
1	A	155	ASN
1	A	182[A]	GLN
1	A	182[B]	GLN
1	B	182[A]	GLN
1	B	182[B]	GLN
1	C	64[A]	LEU
1	C	64[B]	LEU
1	C	119	LYS
1	C	121	LYS
1	C	125	LYS
1	C	155	ASN
1	C	174	GLU
1	C	182[A]	GLN
1	C	182[B]	GLN
1	D	182[A]	GLN
1	D	182[B]	GLN

Some sidechains can be flipped to improve hydrogen bonding and reduce clashes. All (14) such sidechains are listed below:

Mol	Chain	Res	Type
1	A	53	GLN
1	A	59	ASN
1	A	146	GLN
1	A	155	ASN
1	A	157	GLN
1	B	53	GLN
1	B	80	GLN
1	B	133	ASN
1	B	146	GLN
1	C	53	GLN
1	C	155	ASN
1	C	157	GLN
1	D	53	GLN
1	D	80	GLN

### 5.3.3 RNA ⓘ

There are no RNA molecules in this entry.

## 5.4 Non-standard residues in protein, DNA, RNA chains ⓘ

There are no non-standard protein/DNA/RNA residues in this entry.

## 5.5 Carbohydrates ⓘ

There are no carbohydrates in this entry.

## 5.6 Ligand geometry ⓘ

8 ligands are modelled in this entry.

In the following table, the Counts columns list the number of bonds (or angles) for which Mogul statistics could be retrieved, the number of bonds (or angles) that are observed in the model and the number of bonds (or angles) that are defined in the Chemical Component Dictionary. The Link column lists molecule types, if any, to which the group is linked. The Z score for a bond length (or angle) is the number of standard deviations the observed value is removed from the expected value. A bond length (or angle) with  $|Z| > 2$  is considered an outlier worth inspection. RMSZ is the root-mean-square of all Z scores of the bond lengths (or angles).

Mol	Type	Chain	Res	Link	Bond lengths			Bond angles		
					Counts	RMSZ	# $ Z  > 2$	Counts	RMSZ	# $ Z  > 2$
2	FAD	C	203[B]	-	51,58,58	2.03	10 (19%)	60,89,89	1.90	4 (6%)
2	FAD	D	204[A]	1	51,58,58	2.81	11 (21%)	60,89,89	3.82	7 (11%)
2	FAD	B	202[B]	-	51,58,58	2.04	10 (19%)	60,89,89	1.96	4 (6%)
2	FAD	C	203[A]	1	51,58,58	2.81	11 (21%)	60,89,89	3.91	9 (15%)
2	FAD	A	201[B]	-	51,58,58	2.04	11 (21%)	60,89,89	2.01	4 (6%)
2	FAD	B	202[A]	1	51,58,58	2.78	10 (19%)	60,89,89	3.83	7 (11%)
2	FAD	D	204[B]	-	51,58,58	1.99	10 (19%)	60,89,89	1.97	4 (6%)
2	FAD	A	201[A]	1	51,58,58	2.85	12 (23%)	60,89,89	3.90	9 (15%)

In the following table, the Chirals column lists the number of chiral outliers, the number of chiral centers analysed, the number of these observed in the model and the number defined in the Chemical Component Dictionary. Similar counts are reported in the Torsion and Rings columns. '-' means no outliers of that kind were identified.

Mol	Type	Chain	Res	Link	Chirals	Torsions	Rings
2	FAD	C	203[B]	-	-	5/30/50/50	0/6/6/6
2	FAD	D	204[A]	1	-	5/30/50/50	0/6/6/6
2	FAD	B	202[B]	-	-	5/30/50/50	0/6/6/6
2	FAD	C	203[A]	1	-	5/30/50/50	0/6/6/6
2	FAD	A	201[B]	-	-	5/30/50/50	0/6/6/6
2	FAD	B	202[A]	1	-	5/30/50/50	0/6/6/6
2	FAD	D	204[B]	-	-	5/30/50/50	0/6/6/6
2	FAD	A	201[A]	1	-	5/30/50/50	0/6/6/6

All (85) bond length outliers are listed below:

Mol	Chain	Res	Type	Atoms	Z	Observed(Å)	Ideal(Å)
2	A	201[A]	FAD	C4X-C10	14.07	1.52	1.38
2	D	204[A]	FAD	C4X-C10	13.76	1.52	1.38
2	C	203[A]	FAD	C4X-C10	13.74	1.52	1.38
2	B	202[A]	FAD	C4X-C10	13.43	1.52	1.38
2	C	203[A]	FAD	C4X-N5	9.27	1.46	1.33
2	A	201[A]	FAD	C4X-N5	9.26	1.46	1.33
2	B	202[A]	FAD	C4X-N5	9.03	1.46	1.33
2	D	204[A]	FAD	C4X-N5	8.96	1.46	1.33
2	C	203[B]	FAD	C4X-N5	6.59	1.42	1.33
2	A	201[B]	FAD	C4X-N5	6.20	1.42	1.33
2	A	201[B]	FAD	C4X-C10	6.10	1.44	1.38
2	B	202[B]	FAD	C4X-N5	6.09	1.42	1.33
2	B	202[B]	FAD	C4X-C10	5.96	1.44	1.38
2	D	204[B]	FAD	C4X-C10	5.81	1.44	1.38
2	D	204[B]	FAD	C4X-N5	5.63	1.41	1.33
2	C	203[B]	FAD	C4X-C10	5.62	1.44	1.38
2	B	202[A]	FAD	C4-N3	5.41	1.42	1.33
2	C	203[B]	FAD	C9A-N10	5.27	1.45	1.38
2	D	204[B]	FAD	C9A-N10	5.26	1.45	1.38
2	D	204[A]	FAD	C4-N3	5.22	1.42	1.33
2	A	201[B]	FAD	C9A-N10	5.18	1.45	1.38
2	A	201[A]	FAD	C4-N3	5.09	1.41	1.33
2	B	202[B]	FAD	C9A-N10	4.98	1.45	1.38
2	C	203[A]	FAD	C4-N3	4.85	1.41	1.33
2	B	202[B]	FAD	C4-N3	4.81	1.41	1.33
2	C	203[B]	FAD	C4-N3	4.64	1.41	1.33
2	C	203[A]	FAD	C9A-N10	4.60	1.44	1.38
2	B	202[A]	FAD	C9A-N10	4.59	1.44	1.38
2	A	201[B]	FAD	C4-N3	4.56	1.41	1.33

*Continued on next page...*

*Continued from previous page...*

Mol	Chain	Res	Type	Atoms	Z	Observed(Å)	Ideal(Å)
2	D	204[A]	FAD	C9A-N10	4.56	1.44	1.38
2	A	201[A]	FAD	C9A-N10	4.52	1.44	1.38
2	D	204[B]	FAD	C4-N3	4.44	1.40	1.33
2	B	202[B]	FAD	C4A-N3A	4.10	1.41	1.35
2	B	202[A]	FAD	C4A-N3A	4.04	1.41	1.35
2	D	204[B]	FAD	C4A-N3A	4.03	1.41	1.35
2	D	204[A]	FAD	C4A-N3A	3.94	1.41	1.35
2	A	201[A]	FAD	C4A-N3A	3.94	1.41	1.35
2	A	201[B]	FAD	C4A-N3A	3.83	1.40	1.35
2	C	203[B]	FAD	C4A-N3A	3.81	1.40	1.35
2	C	203[A]	FAD	C4A-N3A	3.76	1.40	1.35
2	B	202[B]	FAD	C10-N1	3.67	1.38	1.33
2	D	204[B]	FAD	C10-N1	3.59	1.37	1.33
2	A	201[B]	FAD	C5X-N5	3.42	1.41	1.35
2	C	203[B]	FAD	C10-N1	3.22	1.37	1.33
2	C	203[A]	FAD	C9-C8	3.15	1.45	1.37
2	D	204[A]	FAD	C10-N1	3.13	1.37	1.33
2	D	204[A]	FAD	C9-C8	3.01	1.45	1.37
2	A	201[A]	FAD	C9-C8	3.01	1.45	1.37
2	A	201[B]	FAD	C10-N1	2.95	1.37	1.33
2	B	202[A]	FAD	C9-C8	2.93	1.45	1.37
2	B	202[B]	FAD	C5X-N5	2.90	1.40	1.35
2	C	203[B]	FAD	C5X-N5	2.89	1.40	1.35
2	B	202[A]	FAD	C10-N1	2.84	1.36	1.33
2	C	203[A]	FAD	C10-N1	2.80	1.36	1.33
2	D	204[B]	FAD	C5X-N5	2.66	1.39	1.35
2	C	203[B]	FAD	C9-C8	2.58	1.44	1.37
2	A	201[A]	FAD	C10-N1	2.53	1.36	1.33
2	D	204[A]	FAD	C1'-N10	2.52	1.50	1.48
2	D	204[B]	FAD	C9-C8	2.46	1.44	1.37
2	B	202[A]	FAD	C2-N3	2.45	1.43	1.38
2	B	202[B]	FAD	C9-C8	2.40	1.43	1.37
2	D	204[A]	FAD	C2-N3	2.40	1.42	1.38
2	A	201[A]	FAD	C2-N3	2.36	1.42	1.38
2	A	201[B]	FAD	C9-C8	2.29	1.43	1.37
2	A	201[A]	FAD	C1'-N10	2.27	1.50	1.48
2	A	201[B]	FAD	C2A-N3A	2.22	1.35	1.32
2	A	201[A]	FAD	C2A-N3A	2.22	1.35	1.32
2	C	203[A]	FAD	C2A-N3A	2.18	1.35	1.32
2	A	201[A]	FAD	O4B-C1B	2.17	1.44	1.41
2	C	203[A]	FAD	O4B-C1B	2.16	1.44	1.41
2	C	203[B]	FAD	C2A-N3A	2.16	1.35	1.32

*Continued on next page...*

*Continued from previous page...*

Mol	Chain	Res	Type	Atoms	Z	Observed(Å)	Ideal(Å)
2	D	204[B]	FAD	C5'-C4'	2.16	1.54	1.51
2	D	204[B]	FAD	C2A-N3A	2.14	1.35	1.32
2	B	202[B]	FAD	C2A-N3A	2.13	1.35	1.32
2	D	204[A]	FAD	C2A-N3A	2.13	1.35	1.32
2	C	203[A]	FAD	C2-N3	2.10	1.42	1.38
2	A	201[B]	FAD	O4B-C1B	2.10	1.44	1.41
2	C	203[A]	FAD	C5'-C4'	2.08	1.54	1.51
2	A	201[B]	FAD	C5'-C4'	2.08	1.54	1.51
2	D	204[A]	FAD	O4B-C1B	2.07	1.44	1.41
2	C	203[B]	FAD	O4B-C1B	2.05	1.43	1.41
2	B	202[A]	FAD	C2A-N3A	2.05	1.35	1.32
2	B	202[B]	FAD	C5'-C4'	2.03	1.54	1.51
2	B	202[A]	FAD	C1'-N10	2.02	1.50	1.48
2	A	201[A]	FAD	C5A-C4A	-2.01	1.35	1.40

All (48) bond angle outliers are listed below:

Mol	Chain	Res	Type	Atoms	Z	Observed(°)	Ideal(°)
2	C	203[A]	FAD	C4-C4X-C10	-20.09	106.66	119.95
2	A	201[A]	FAD	C4-C4X-C10	-19.78	106.86	119.95
2	B	202[A]	FAD	C4-C4X-C10	-19.34	107.15	119.95
2	D	204[A]	FAD	C4-C4X-C10	-19.31	107.17	119.95
2	C	203[A]	FAD	C10-C4X-N5	-17.79	108.96	121.26
2	A	201[A]	FAD	C10-C4X-N5	-17.77	108.97	121.26
2	B	202[A]	FAD	C10-C4X-N5	-17.59	109.09	121.26
2	D	204[A]	FAD	C10-C4X-N5	-17.47	109.17	121.26
2	A	201[B]	FAD	C4-N3-C2	11.36	124.73	115.14
2	B	202[B]	FAD	C4-N3-C2	11.27	124.66	115.14
2	D	204[B]	FAD	C4-N3-C2	11.21	124.61	115.14
2	C	203[B]	FAD	C4-N3-C2	10.79	124.25	115.14
2	D	204[A]	FAD	C4-N3-C2	9.33	123.02	115.14
2	A	201[A]	FAD	C4-N3-C2	9.27	122.97	115.14
2	C	203[A]	FAD	C4-N3-C2	9.26	122.96	115.14
2	B	202[A]	FAD	C4-N3-C2	9.11	122.83	115.14
2	B	202[A]	FAD	C4X-N5-C5X	6.50	123.27	116.77
2	D	204[A]	FAD	C4X-N5-C5X	6.47	123.24	116.77
2	C	203[A]	FAD	C4X-N5-C5X	6.43	123.19	116.77
2	A	201[A]	FAD	C4X-N5-C5X	6.35	123.12	116.77
2	A	201[B]	FAD	C4X-C4-N3	-6.10	115.08	123.43
2	B	202[B]	FAD	C4X-C4-N3	-5.93	115.32	123.43
2	C	203[B]	FAD	C4X-C4-N3	-5.90	115.37	123.43
2	D	204[B]	FAD	C4X-C4-N3	-5.85	115.44	123.43

*Continued on next page...*



*Continued from previous page...*

Mol	Chain	Res	Type	Atoms	Z	Observed(°)	Ideal(°)
2	D	204[B]	FAD	C1'-N10-C9A	5.05	122.27	118.29
2	C	203[B]	FAD	C1'-N10-C9A	5.04	122.26	118.29
2	A	201[A]	FAD	C4X-C4-N3	-4.87	116.78	123.43
2	C	203[A]	FAD	C4X-C4-N3	-4.82	116.84	123.43
2	B	202[A]	FAD	C4X-C4-N3	-4.74	116.95	123.43
2	B	202[B]	FAD	C1'-N10-C9A	4.70	122.00	118.29
2	D	204[A]	FAD	C4X-C4-N3	-4.68	117.03	123.43
2	A	201[B]	FAD	C1'-N10-C9A	4.53	121.86	118.29
2	A	201[A]	FAD	C3B-C2B-C1B	3.26	105.88	100.98
2	A	201[B]	FAD	C3B-C2B-C1B	3.18	105.77	100.98
2	B	202[B]	FAD	C3B-C2B-C1B	2.82	105.22	100.98
2	B	202[A]	FAD	C3B-C2B-C1B	2.80	105.20	100.98
2	D	204[A]	FAD	C3B-C2B-C1B	2.73	105.08	100.98
2	D	204[B]	FAD	C3B-C2B-C1B	2.67	105.00	100.98
2	C	203[A]	FAD	C1'-N10-C9A	2.61	120.34	118.29
2	A	201[A]	FAD	C1'-N10-C9A	2.60	120.34	118.29
2	C	203[A]	FAD	C3B-C2B-C1B	2.51	104.75	100.98
2	D	204[A]	FAD	C1'-N10-C9A	2.48	120.25	118.29
2	B	202[A]	FAD	C1'-N10-C9A	2.35	120.14	118.29
2	C	203[A]	FAD	O2B-C2B-C3B	2.28	119.21	111.82
2	C	203[B]	FAD	C3B-C2B-C1B	2.26	104.38	100.98
2	A	201[A]	FAD	O2B-C2B-C3B	2.17	118.85	111.82
2	A	201[A]	FAD	C9A-N10-C10	-2.09	119.17	121.91
2	C	203[A]	FAD	C9A-N10-C10	-2.09	119.18	121.91

There are no chirality outliers.

All (40) torsion outliers are listed below:

Mol	Chain	Res	Type	Atoms
2	C	203[B]	FAD	C3'-C4'-C5'-O5'
2	D	204[A]	FAD	C3'-C4'-C5'-O5'
2	B	202[B]	FAD	C3'-C4'-C5'-O5'
2	C	203[A]	FAD	C3'-C4'-C5'-O5'
2	A	201[B]	FAD	C3'-C4'-C5'-O5'
2	B	202[A]	FAD	C3'-C4'-C5'-O5'
2	D	204[B]	FAD	C3'-C4'-C5'-O5'
2	A	201[A]	FAD	C3'-C4'-C5'-O5'
2	C	203[B]	FAD	O4'-C4'-C5'-O5'
2	D	204[A]	FAD	O4'-C4'-C5'-O5'
2	B	202[B]	FAD	O4'-C4'-C5'-O5'
2	C	203[A]	FAD	O4'-C4'-C5'-O5'
2	A	201[B]	FAD	O4'-C4'-C5'-O5'

*Continued on next page...*

*Continued from previous page...*

Mol	Chain	Res	Type	Atoms
2	B	202[A]	FAD	O4'-C4'-C5'-O5'
2	D	204[B]	FAD	O4'-C4'-C5'-O5'
2	A	201[A]	FAD	O4'-C4'-C5'-O5'
2	D	204[A]	FAD	C4'-C5'-O5'-P
2	A	201[B]	FAD	C4'-C5'-O5'-P
2	D	204[B]	FAD	C4'-C5'-O5'-P
2	A	201[A]	FAD	C4'-C5'-O5'-P
2	C	203[B]	FAD	C4'-C5'-O5'-P
2	B	202[B]	FAD	C4'-C5'-O5'-P
2	C	203[A]	FAD	C4'-C5'-O5'-P
2	B	202[A]	FAD	C4'-C5'-O5'-P
2	C	203[B]	FAD	P-O3P-PA-O1A
2	D	204[A]	FAD	P-O3P-PA-O1A
2	B	202[B]	FAD	P-O3P-PA-O1A
2	C	203[A]	FAD	P-O3P-PA-O1A
2	A	201[B]	FAD	P-O3P-PA-O1A
2	B	202[A]	FAD	P-O3P-PA-O1A
2	D	204[B]	FAD	P-O3P-PA-O1A
2	A	201[A]	FAD	P-O3P-PA-O1A
2	B	202[A]	FAD	O4B-C4B-C5B-O5B
2	B	202[B]	FAD	O4B-C4B-C5B-O5B
2	C	203[B]	FAD	O4B-C4B-C5B-O5B
2	D	204[A]	FAD	O4B-C4B-C5B-O5B
2	D	204[B]	FAD	O4B-C4B-C5B-O5B
2	C	203[A]	FAD	O4B-C4B-C5B-O5B
2	A	201[B]	FAD	O4B-C4B-C5B-O5B
2	A	201[A]	FAD	O4B-C4B-C5B-O5B

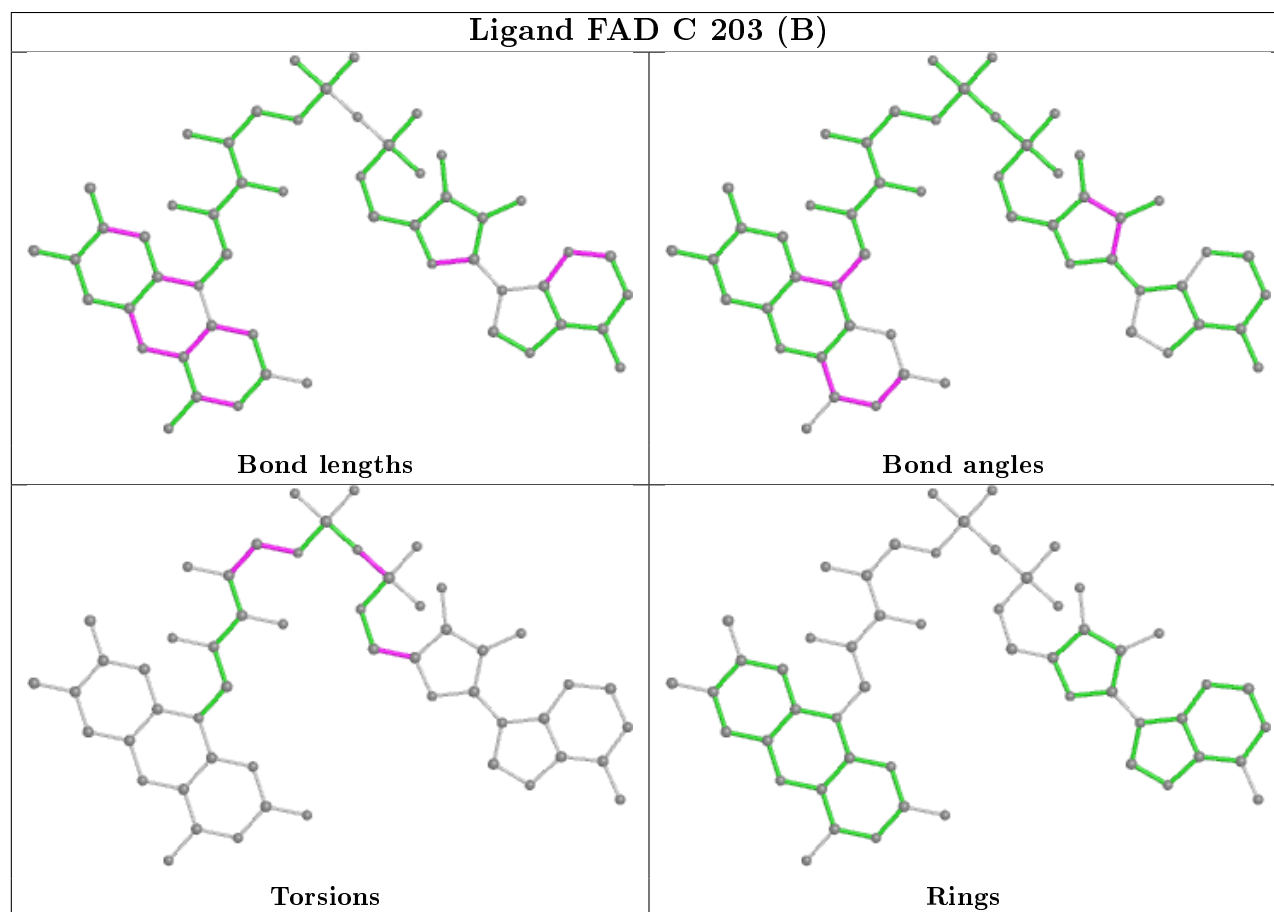
There are no ring outliers.

6 monomers are involved in 16 short contacts:

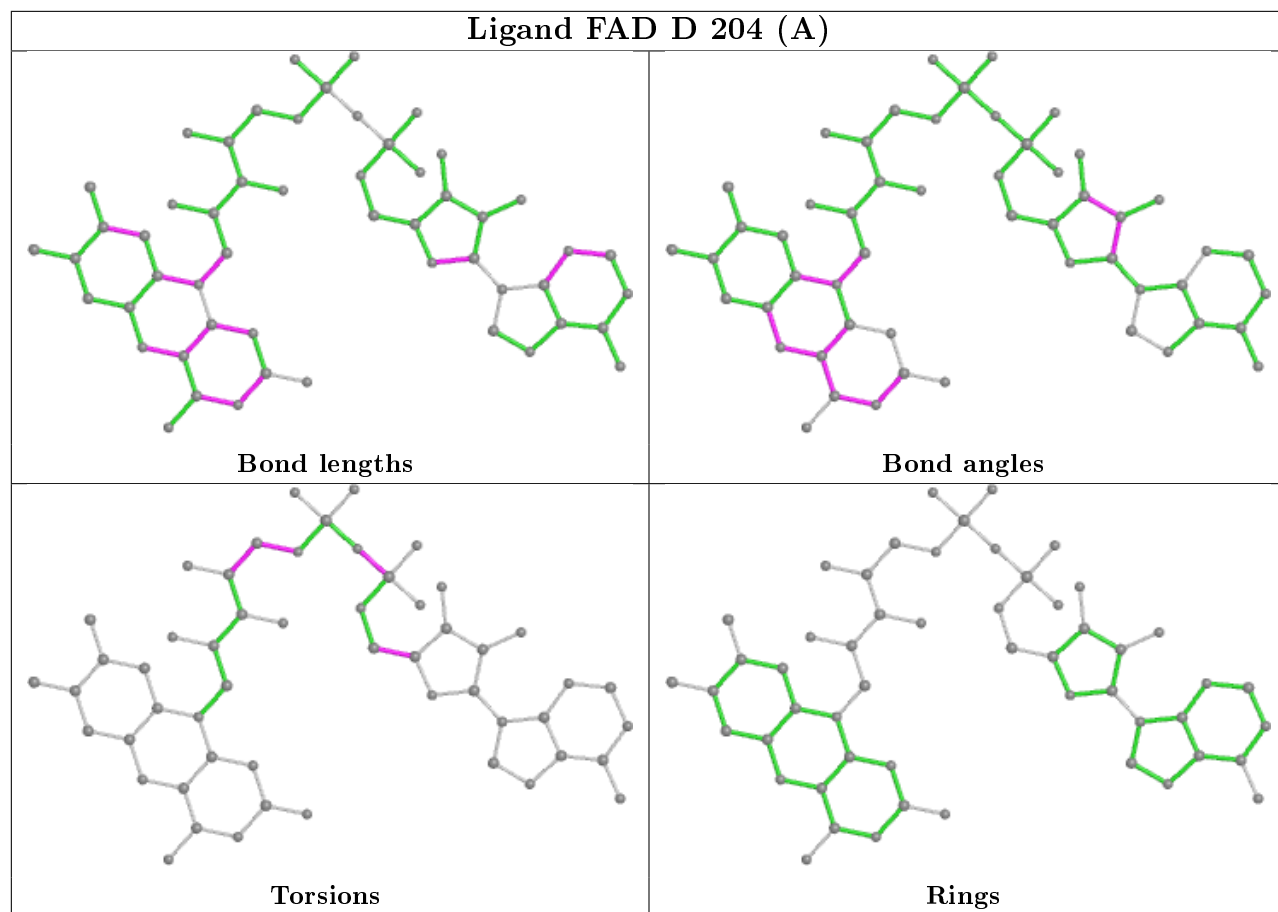
Mol	Chain	Res	Type	Clashes	Symm-Clashes
2	C	203[B]	FAD	1	0
2	D	204[A]	FAD	4	0
2	B	202[B]	FAD	1	0
2	C	203[A]	FAD	3	0
2	B	202[A]	FAD	4	0
2	A	201[A]	FAD	3	0

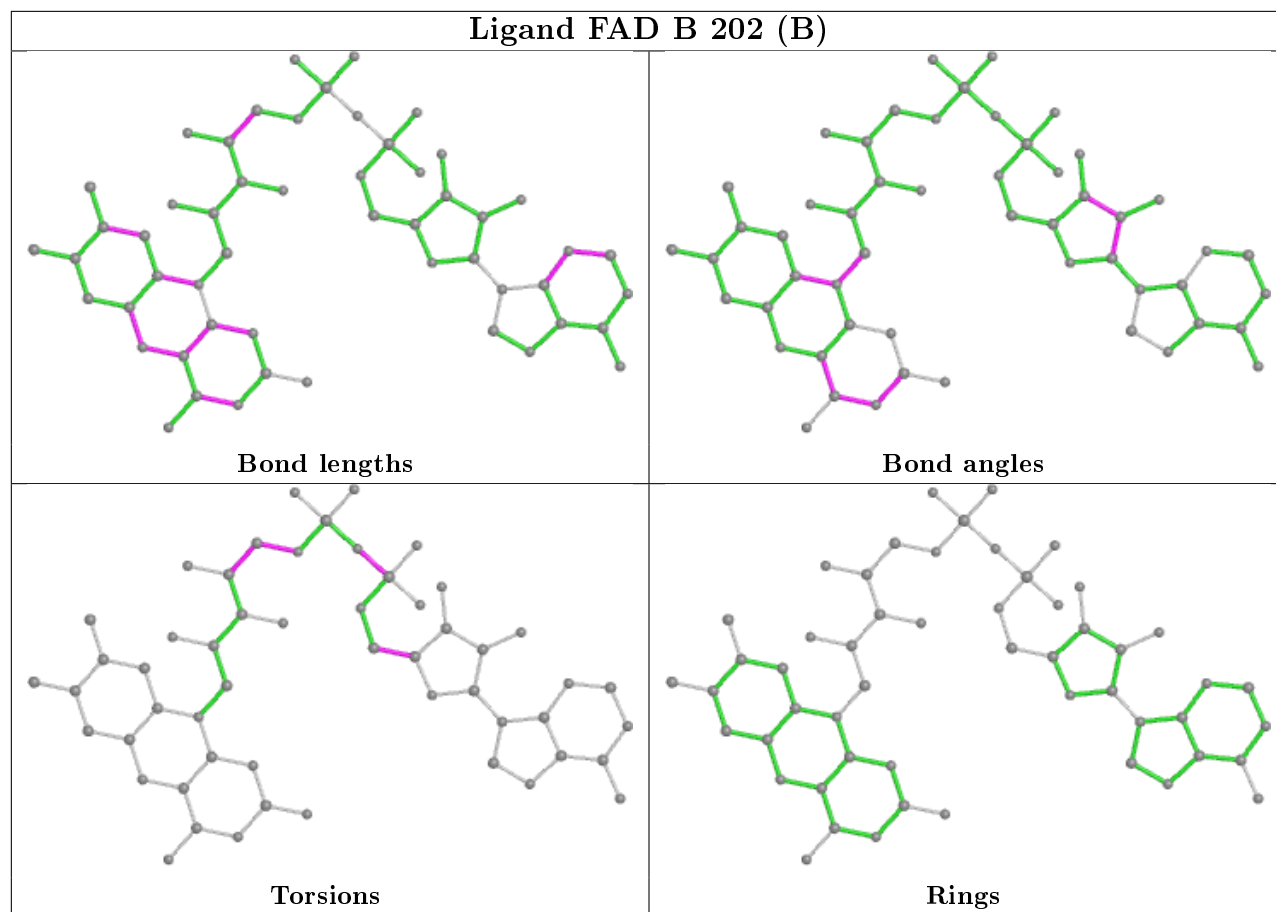
The following is a two-dimensional graphical depiction of Mogul quality analysis of bond lengths, bond angles, torsion angles, and ring geometry for all instances of the Ligand of Interest. In addition, ligands with molecular weight > 250 and outliers as shown on the validation Tables will

also be included. For torsion angles, if less than 5% of the Mogul distribution of torsion angles is within 10 degrees of the torsion angle in question, then that torsion angle is considered an outlier. Any bond that is central to one or more torsion angles identified as an outlier by Mogul will be highlighted in the graph. For rings, the root-mean-square deviation (RMSD) between the ring in question and similar rings identified by Mogul is calculated over all ring torsion angles. If the average RMSD is greater than 60 degrees and the minimal RMSD between the ring in question and any Mogul-identified rings is also greater than 60 degrees, then that ring is considered an outlier. The outliers are highlighted in purple. The color gray indicates Mogul did not find sufficient equivalents in the CSD to analyse the geometry.

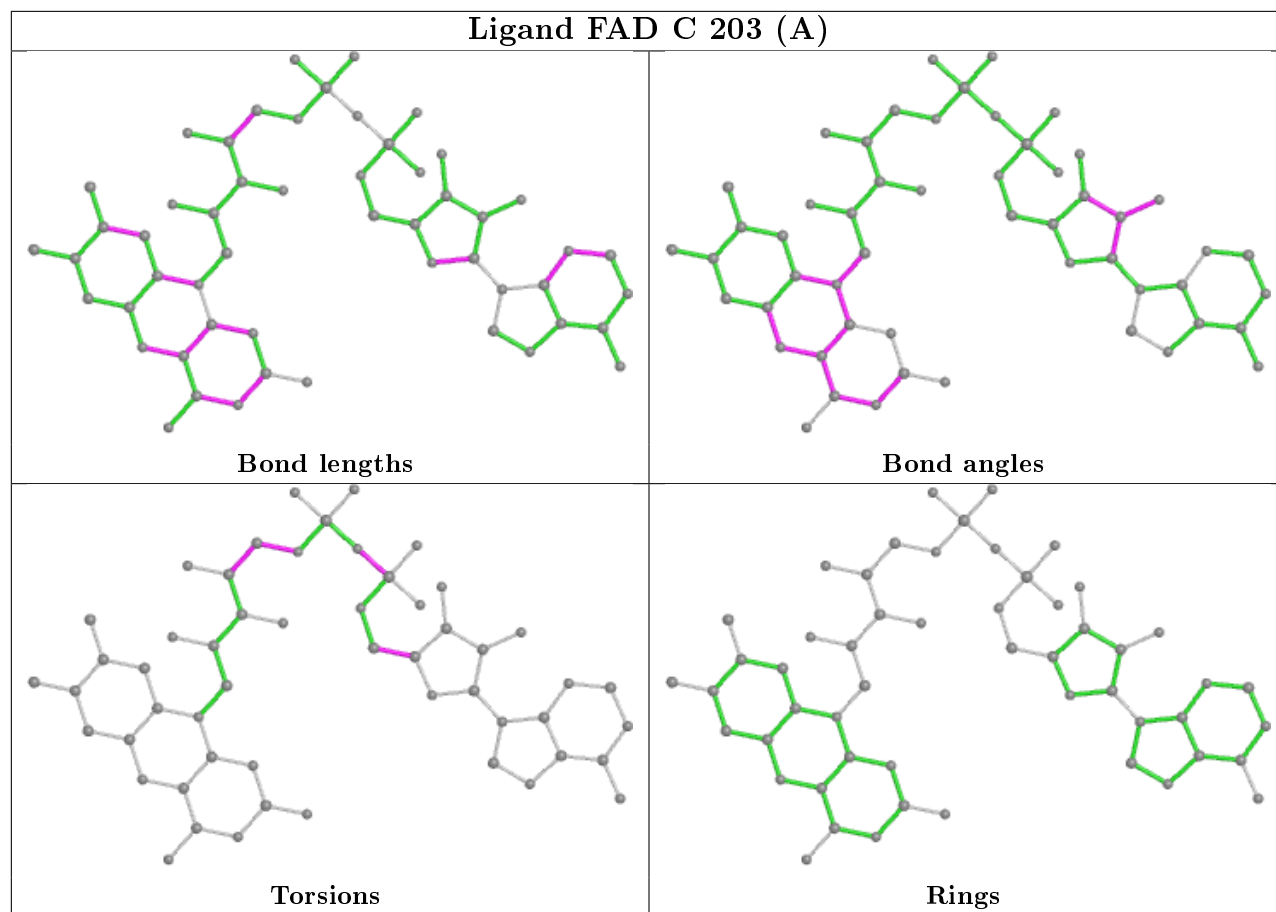


## Ligand FAD D 204 (A)

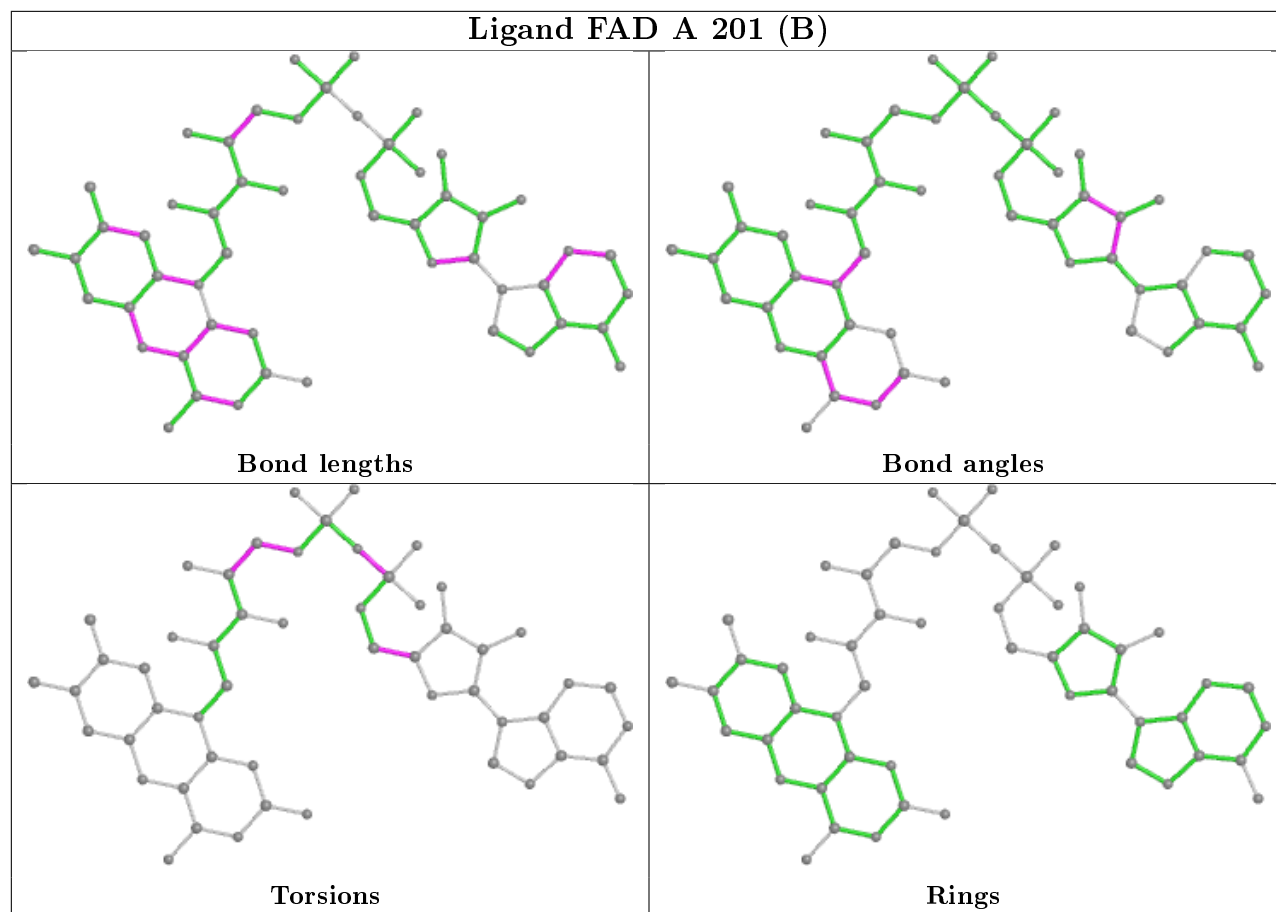




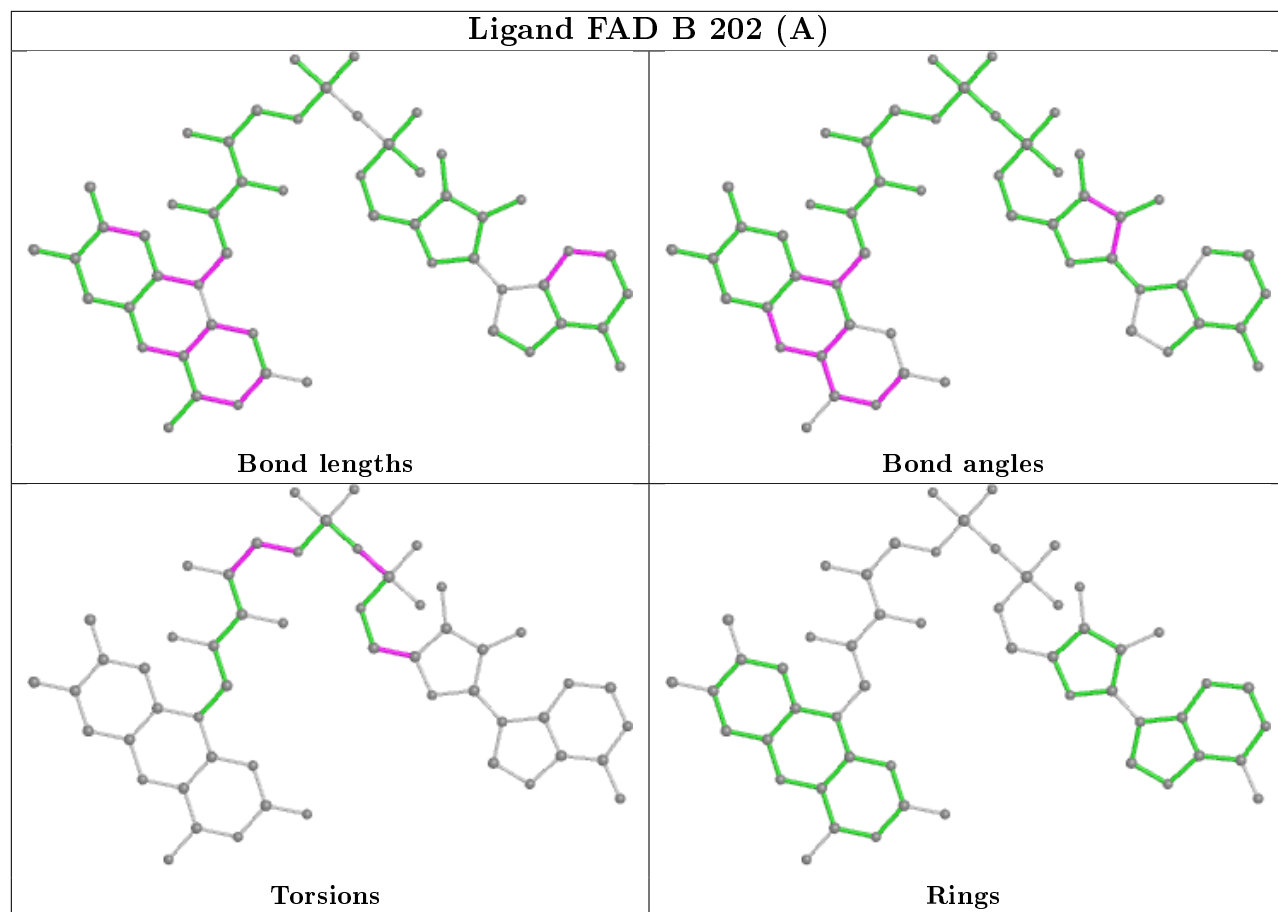
## Ligand FAD C 203 (A)



## Ligand FAD A 201 (B)

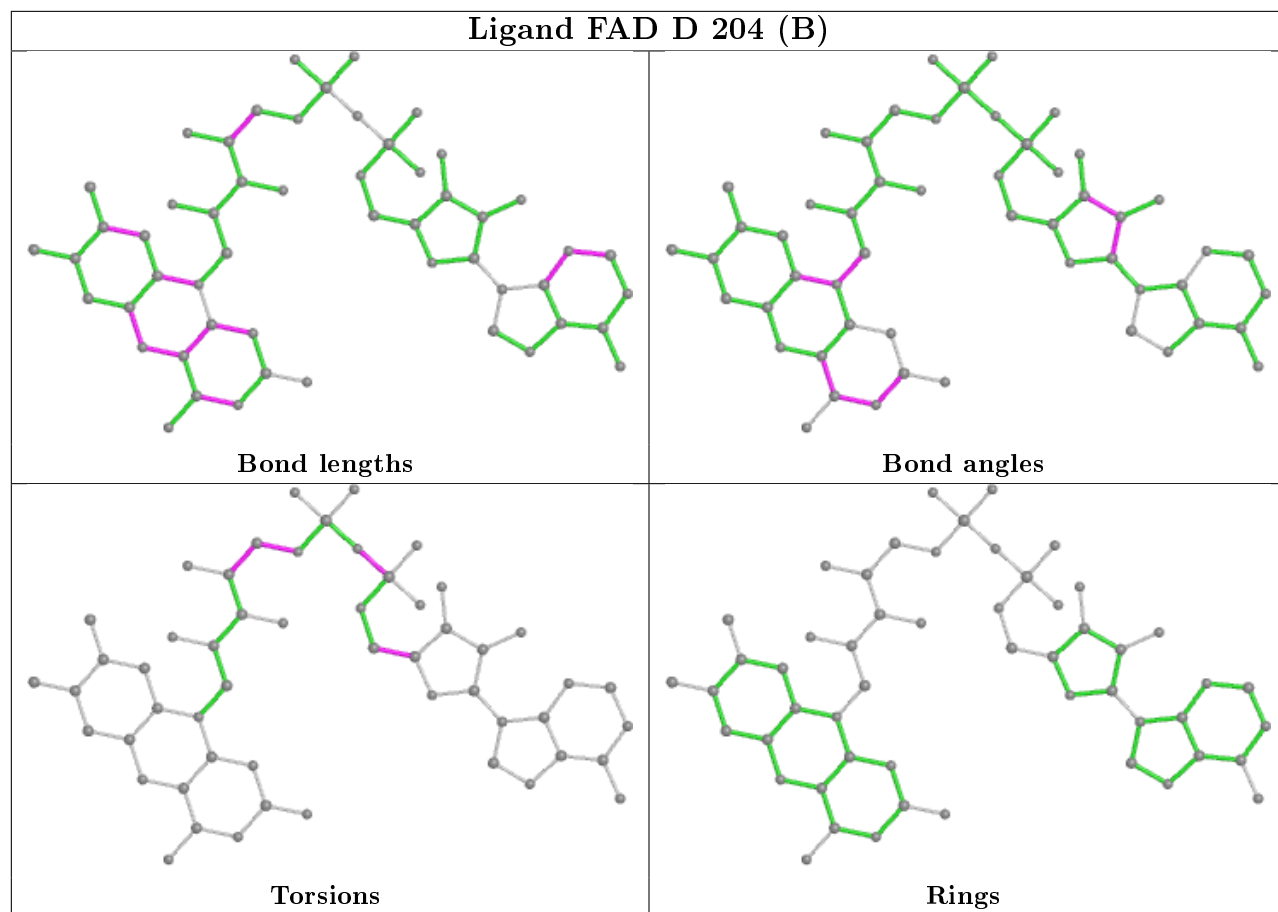


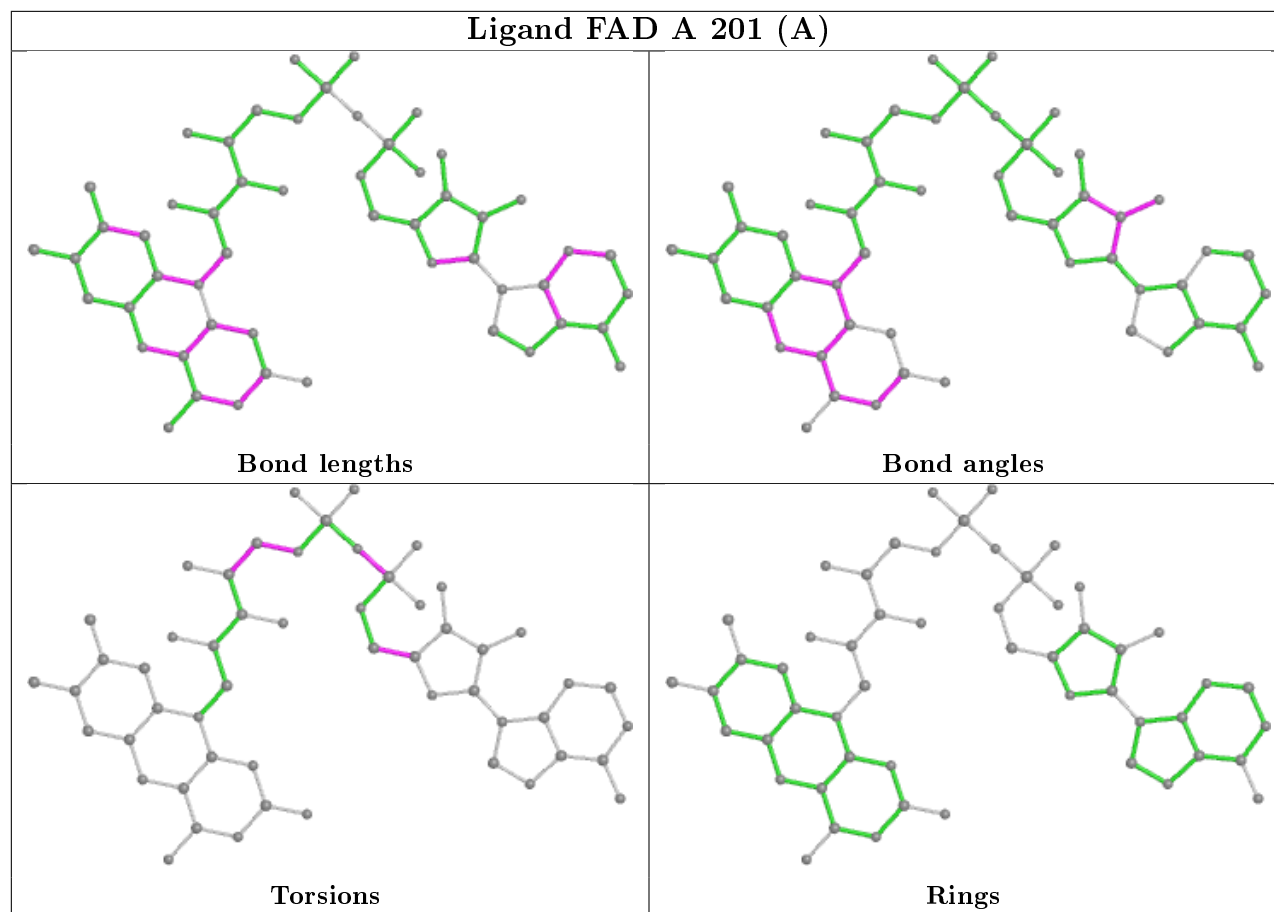
## Ligand FAD B 202 (A)





## Ligand FAD D 204 (B)





## 5.7 Other polymers [i](#)

There are no such residues in this entry.

## 5.8 Polymer linkage issues [i](#)

There are no chain breaks in this entry.

## 6 Fit of model and data

### 6.1 Protein, DNA and RNA chains

In the following table, the column labelled ‘#RSRZ> 2’ contains the number (and percentage) of RSRZ outliers, followed by percent RSRZ outliers for the chain as percentile scores relative to all X-ray entries and entries of similar resolution. The OWAB column contains the minimum, median, 95<sup>th</sup> percentile and maximum values of the occupancy-weighted average B-factor per residue. The column labelled ‘Q< 0.9’ lists the number of (and percentage) of residues with an average occupancy less than 0.9.

Mol	Chain	Analysed	<RSRZ>	#RSRZ>2	OWAB(Å <sup>2</sup> )	Q<0.9
1	A	147/149 (98%)	0.39	8 (5%) 25 28	11, 19, 29, 35	0
1	B	147/149 (98%)	0.42	8 (5%) 25 28	11, 19, 30, 37	0
1	C	147/149 (98%)	0.50	9 (6%) 21 23	11, 20, 29, 33	0
1	D	147/149 (98%)	0.43	8 (5%) 25 28	11, 19, 30, 38	0
All	All	588/596 (98%)	0.43	33 (5%) 24 27	11, 19, 30, 38	0

All (33) RSRZ outliers are listed below:

Mol	Chain	Res	Type	RSRZ
1	C	64[A]	LEU	5.4
1	C	65[A]	GLY	5.1
1	C	66[A]	PRO	4.9
1	D	43	GLY	4.2
1	B	66[A]	PRO	4.0
1	D	66[A]	PRO	3.9
1	D	59	ASN	3.8
1	A	66[A]	PRO	3.7
1	B	65[A]	GLY	3.6
1	A	39	LEU	3.5
1	C	183	CYS	3.4
1	B	43	GLY	3.4
1	A	64[A]	LEU	3.2
1	D	64[A]	LEU	3.1
1	A	59	ASN	2.9
1	D	162	PHE	2.9
1	B	59	ASN	2.9
1	D	65[A]	GLY	2.8
1	B	64[A]	LEU	2.7
1	B	67[A]	VAL	2.6
1	D	42	PRO	2.6

*Continued on next page...*

*Continued from previous page...*

Mol	Chain	Res	Type	RSRZ
1	B	39	LEU	2.6
1	A	162	PHE	2.4
1	A	71[A]	CYS	2.4
1	C	172	THR	2.4
1	A	65[A]	GLY	2.2
1	C	171	GLU	2.1
1	C	39	LEU	2.1
1	D	63[A]	GLU	2.1
1	A	171	GLU	2.1
1	B	130	ASN	2.1
1	C	117	MET	2.1
1	C	101	ALA	2.0

## 6.2 Non-standard residues in protein, DNA, RNA chains ⓘ

There are no non-standard protein/DNA/RNA residues in this entry.

## 6.3 Carbohydrates ⓘ

There are no carbohydrates in this entry.

## 6.4 Ligands ⓘ

In the following table, the Atoms column lists the number of modelled atoms in the group and the number defined in the chemical component dictionary. The B-factors column lists the minimum, median, 95<sup>th</sup> percentile and maximum values of B factors of atoms in the group. The column labelled 'Q< 0.9' lists the number of atoms with occupancy less than 0.9.

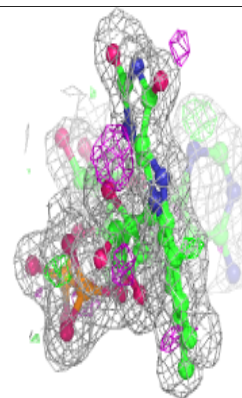
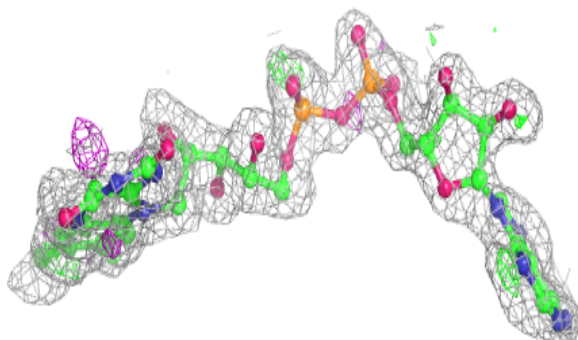
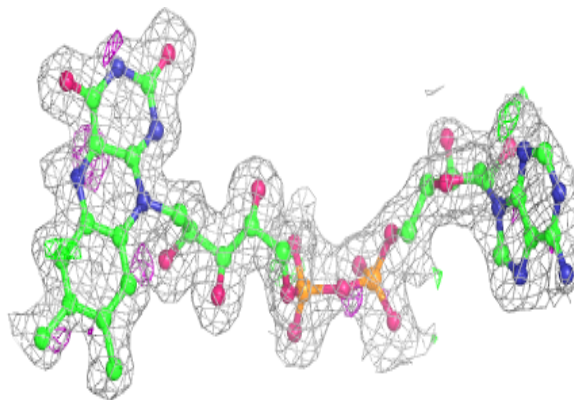
Mol	Type	Chain	Res	Atoms	RSCC	RSR	B-factors(Å <sup>2</sup> )	Q<0.9
2	FAD	D	204[A]	53/53	0.92	0.13	13,20,37,38	53
2	FAD	B	202[B]	53/53	0.92	0.14	2,13,34,35	53
2	FAD	B	202[A]	53/53	0.92	0.14	15,19,39,39	53
2	FAD	D	204[B]	53/53	0.92	0.13	2,12,33,33	53
2	FAD	A	201[B]	53/53	0.94	0.12	4,12,36,36	53
2	FAD	C	203[B]	53/53	0.94	0.12	3,11,32,33	53
2	FAD	C	203[A]	53/53	0.94	0.12	12,19,37,38	53
2	FAD	A	201[A]	53/53	0.94	0.12	12,18,40,41	53

The following is a graphical depiction of the model fit to experimental electron density of all instances of the Ligand of Interest. In addition, ligands with molecular weight > 250 and outliers

as shown on the geometry validation Tables will also be included. Each fit is shown from different orientation to approximate a three-dimensional view.

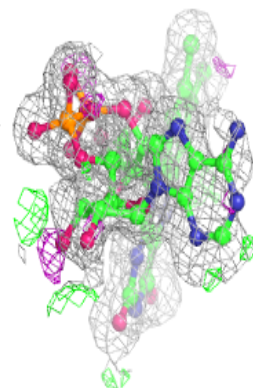
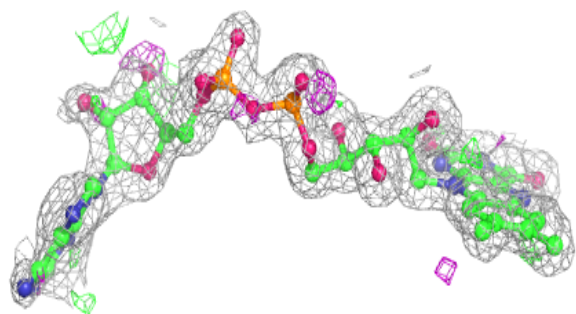
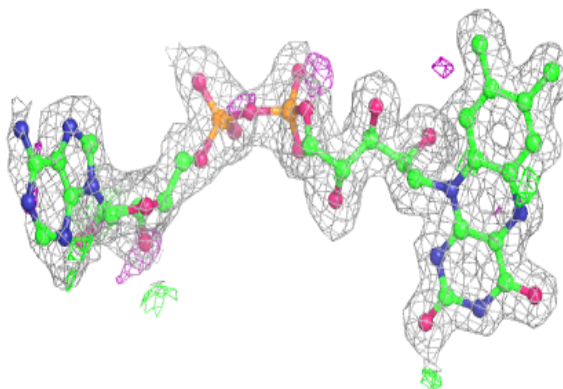
**Electron density around FAD D 204 (A):**

$2mF_o-DF_c$  (at 0.7 rmsd) in gray  
 $mF_o-DF_c$  (at 3 rmsd) in purple (negative)  
and green (positive)



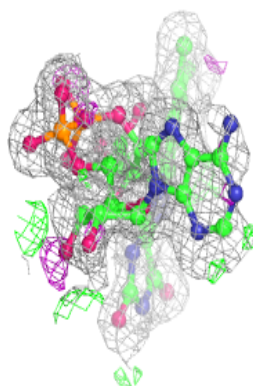
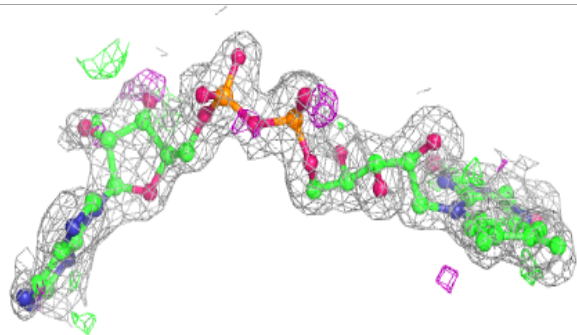
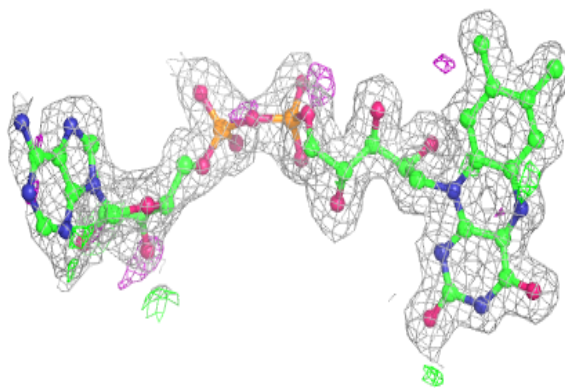
**Electron density around FAD B 202 (B):**

$2mF_o-DF_c$  (at 0.7 rmsd) in gray  
 $mF_o-DF_c$  (at 3 rmsd) in purple (negative)  
and green (positive)

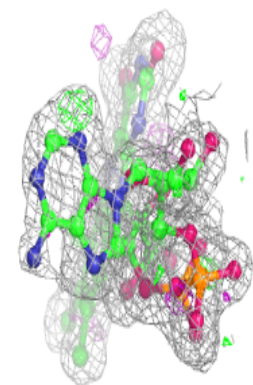
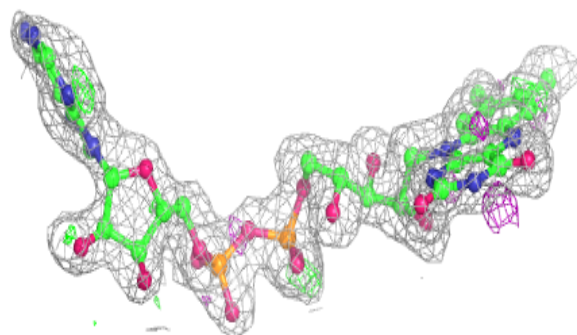
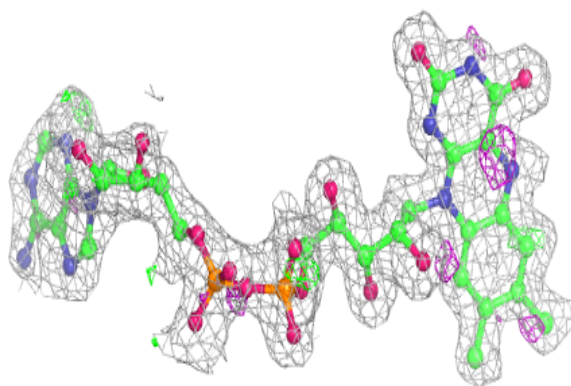


**Electron density around FAD B 202 (A):**

$2mF_o-DF_c$  (at 0.7 rmsd) in gray  
 $mF_o-DF_c$  (at 3 rmsd) in purple (negative)  
and green (positive)

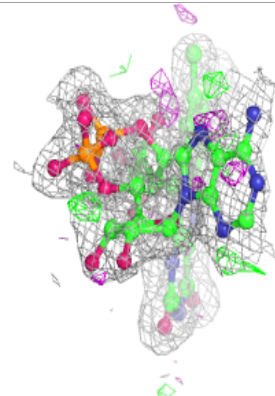
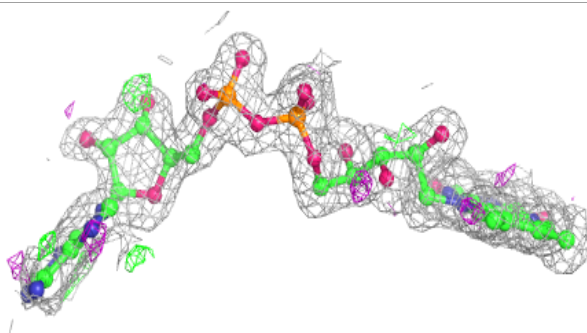
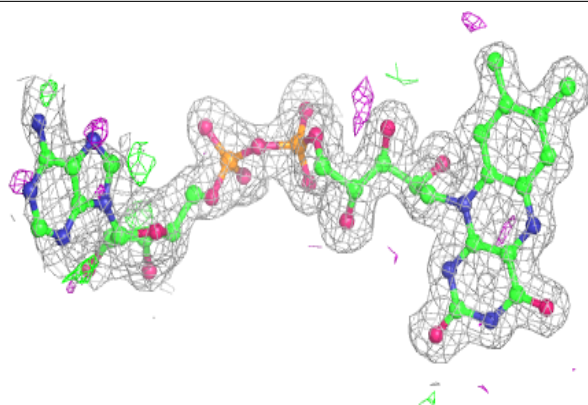
**Electron density around FAD D 204 (B):**

$2mF_o-DF_c$  (at 0.7 rmsd) in gray  
 $mF_o-DF_c$  (at 3 rmsd) in purple (negative)  
and green (positive)

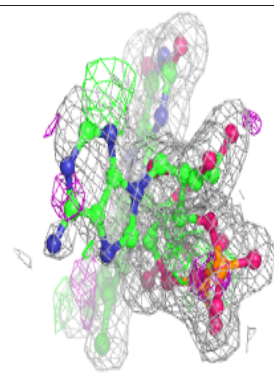
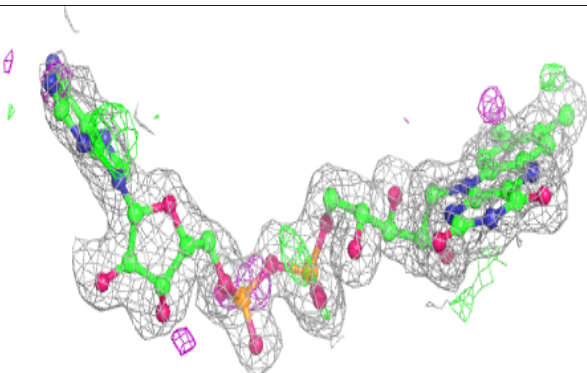
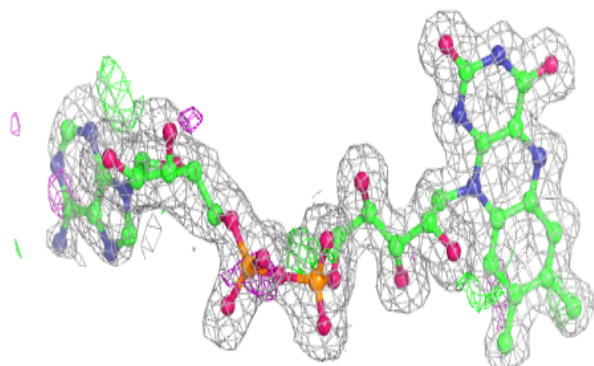


**Electron density around FAD A 201 (B):**

$2mF_o-DF_c$  (at 0.7 rmsd) in gray  
 $mF_o-DF_c$  (at 3 rmsd) in purple (negative)  
and green (positive)

**Electron density around FAD C 203 (B):**

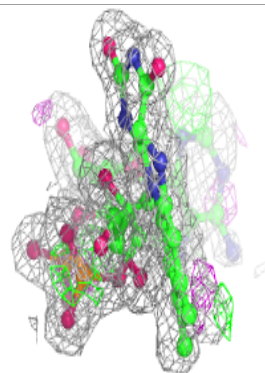
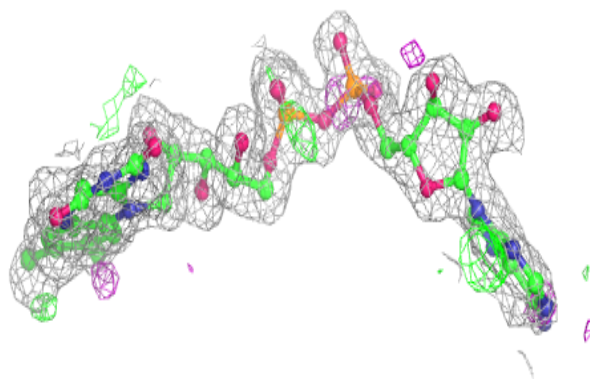
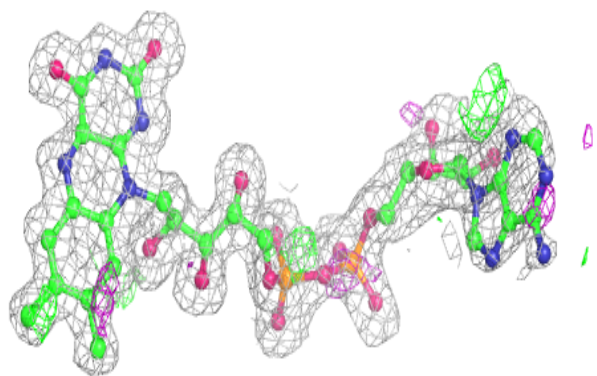
$2mF_o-DF_c$  (at 0.7 rmsd) in gray  
 $mF_o-DF_c$  (at 3 rmsd) in purple (negative)  
and green (positive)



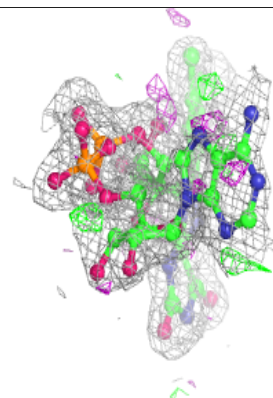
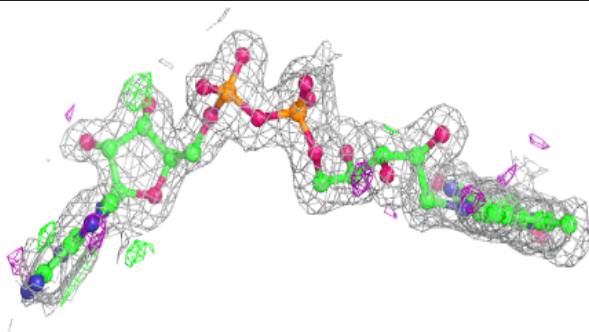
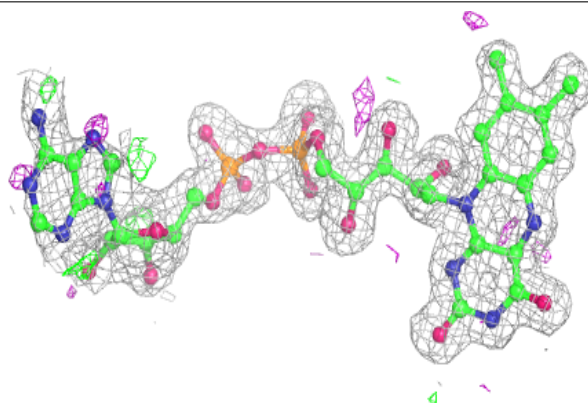


**Electron density around FAD C 203 (A):**

$2mF_o-DF_c$  (at 0.7 rmsd) in gray  
 $mF_o-DF_c$  (at 3 rmsd) in purple (negative)  
and green (positive)

**Electron density around FAD A 201 (A):**

$2mF_o-DF_c$  (at 0.7 rmsd) in gray  
 $mF_o-DF_c$  (at 3 rmsd) in purple (negative)  
and green (positive)





## 6.5 Other polymers

There are no such residues in this entry.