



# Full wwPDB X-ray Structure Validation Report ⓘ

May 13, 2020 – 02:35 am BST

PDB ID : 3PET  
Title : Crystal structure of a putative adhesin (BF0245) from *Bacteroides fragilis* NCTC 9343 at 2.07 Å resolution  
Authors : Joint Center for Structural Genomics (JCSG)  
Deposited on : 2010-10-27  
Resolution : 2.07 Å(reported)

This is a Full wwPDB X-ray Structure Validation Report for a publicly released PDB entry.

We welcome your comments at [validation@mail.wwpdb.org](mailto:validation@mail.wwpdb.org)

A user guide is available at

<https://www.wwpdb.org/validation/2017/XrayValidationReportHelp>

with specific help available everywhere you see the ⓘ symbol.

---

The following versions of software and data (see [references ⓘ](#)) were used in the production of this report:

MolProbity : 4.02b-467  
Mogul : 1.8.5 (274361), CSD as541be (2020)  
Xtriage (Phenix) : 1.13  
EDS : 2.11  
Percentile statistics : 20191225.v01 (using entries in the PDB archive December 25th 2019)  
Refmac : 5.8.0158  
CCP4 : 7.0.044 (Gargrove)  
Ideal geometry (proteins) : Engh & Huber (2001)  
Ideal geometry (DNA, RNA) : Parkinson et al. (1996)  
Validation Pipeline (wwPDB-VP) : 2.11

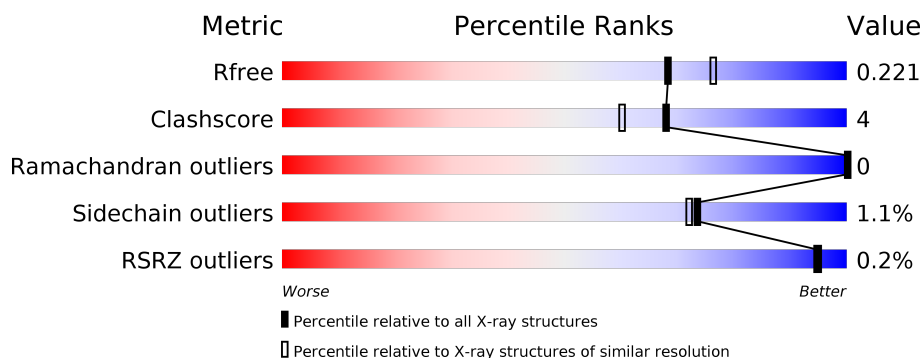
# 1 Overall quality at a glance

The following experimental techniques were used to determine the structure:

## *X-RAY DIFFRACTION*

The reported resolution of this entry is 2.07 Å.

Percentile scores (ranging between 0-100) for global validation metrics of the entry are shown in the following graphic. The table shows the number of entries on which the scores are based.



Metric	Whole archive (#Entries)	Similar resolution (#Entries, resolution range(Å))
$R_{free}$	130704	2684 (2.08-2.04)
Clashscore	141614	2801 (2.08-2.04)
Ramachandran outliers	138981	2768 (2.08-2.04)
Sidechain outliers	138945	2768 (2.08-2.04)
RSRZ outliers	127900	2646 (2.08-2.04)

The table below summarises the geometric issues observed across the polymeric chains and their fit to the electron density. The red, orange, yellow and green segments on the lower bar indicate the fraction of residues that contain outliers for  $\geq 3$ , 2, 1 and 0 types of geometric quality criteria respectively. A grey segment represents the fraction of residues that are not modelled. The numeric value for each fraction is indicated below the corresponding segment, with a dot representing fractions  $\leq 5\%$ . The upper red bar (where present) indicates the fraction of residues that have poor fit to the electron density. The numeric value is given above the bar.

Mol	Chain	Length	Quality of chain
1	A	221	
1	B	221	

## 2 Entry composition

There are 5 unique types of molecules in this entry. The entry contains 3745 atoms, of which 0 are hydrogens and 0 are deuteriums.

In the tables below, the ZeroOcc column contains the number of atoms modelled with zero occupancy, the AltConf column contains the number of residues with at least one atom in alternate conformation and the Trace column contains the number of residues modelled with at most 2 atoms.

- Molecule 1 is a protein called Putative adhesin.

Mol	Chain	Residues	Atoms						ZeroOcc	AltConf	Trace
1	A	218	Total	C	N	O	S	Se	0	9	0
			1651	1034	281	332	2	2			
1	B	218	Total	C	N	O	S	Se	0	7	0
			1637	1023	280	330	2	2			

There are 2 discrepancies between the modelled and reference sequences:

Chain	Residue	Modelled	Actual	Comment	Reference
A	0	GLY	-	leader sequence	UNP Q5LIP7
B	0	GLY	-	leader sequence	UNP Q5LIP7

- Molecule 2 is CHLORIDE ION (three-letter code: CL) (formula: Cl).

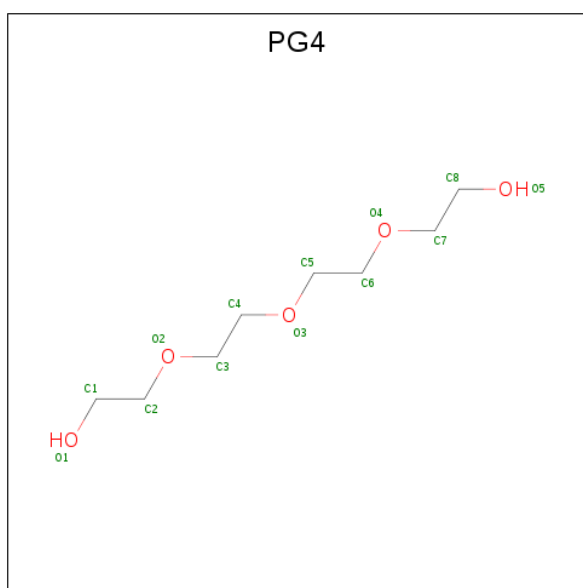
Mol	Chain	Residues	Atoms		ZeroOcc	AltConf
2	B	1	Total	Cl	0	0
			1	1		
2	A	1	Total	Cl	0	0
			1	1		

- Molecule 3 is ACETATE ION (three-letter code: ACT) (formula: C<sub>2</sub>H<sub>3</sub>O<sub>2</sub>).



Mol	Chain	Residues	Atoms			ZeroOcc	AltConf
3	A	1	Total	C	O	0	0
			4	2	2		
3	B	1	Total	C	O	0	0
			4	2	2		

- Molecule 4 is TETRAETHYLENE GLYCOL (three-letter code: PG4) (formula:  $C_8H_{18}O_5$ ).



Mol	Chain	Residues	Atoms			ZeroOcc	AltConf
4	A	1	Total	C	O	0	0
			13	8	5		
4	A	1	Total	C	O	0	0
			13	8	5		

*Continued on next page...*

*Continued from previous page...*

Mol	Chain	Residues	Atoms			ZeroOcc	AltConf
4	A	1	Total	C	O	0	0
			13	8	5		
4	A	1	Total	C	O	0	0
			7	4	3		
4	A	1	Total	C	O	0	0
			10	6	4		
4	A	1	Total	C	O	0	0
			13	8	5		
4	A	1	Total	C	O	0	0
			7	4	3		
4	A	1	Total	C	O	0	0
			7	4	3		
4	B	1	Total	C	O	0	0
			13	8	5		
4	B	1	Total	C	O	0	0
			13	8	5		
4	B	1	Total	C	O	0	0
			11	7	4		
4	B	1	Total	C	O	0	0
			10	6	4		
4	B	1	Total	C	O	0	0
			7	4	3		
4	B	1	Total	C	O	0	0
			4	2	2		

- Molecule 5 is water.

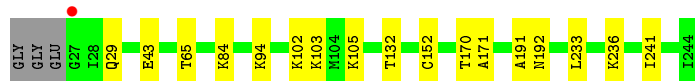
Mol	Chain	Residues	Atoms		ZeroOcc	AltConf
5	A	152	Total	O	0	0
			152	152		
5	B	152	Total	O	0	2
			154	154		

### 3 Residue-property plots [i](#)


These plots are drawn for all protein, RNA and DNA chains in the entry. The first graphic for a chain summarises the proportions of the various outlier classes displayed in the second graphic. The second graphic shows the sequence view annotated by issues in geometry and electron density. Residues are color-coded according to the number of geometric quality criteria for which they contain at least one outlier: green = 0, yellow = 1, orange = 2 and red = 3 or more. A red dot above a residue indicates a poor fit to the electron density ( $RSRZ > 2$ ). Stretches of 2 or more consecutive residues without any outlier are shown as a green connector. Residues present in the sample, but not in the model, are shown in grey.

#### • Molecule 1: Putative adhesin

Chain A: 



#### • Molecule 1: Putative adhesin

Chain B: 



## 4 Data and refinement statistics

Property	Value	Source
Space group	P 21 21 21	Depositor
Cell constants a, b, c, $\alpha$ , $\beta$ , $\gamma$	38.59Å 60.70Å 205.11Å 90.00° 90.00° 90.00°	Depositor
Resolution (Å)	45.39 – 2.07 45.39 – 2.07	Depositor EDS
% Data completeness (in resolution range)	(Not available) (45.39-2.07) 100.0 (45.39-2.07)	Depositor EDS
$R_{merge}$	0.15	Depositor
$R_{sym}$	(Not available)	Depositor
$\langle I/\sigma(I) \rangle$ <sup>1</sup>	2.34 (at 2.07Å)	Xtriage
Refinement program	BUSTER-TNT BUSTER 2.8.0, BUSTER 2.8.0	Depositor
R, $R_{free}$	0.176 , 0.210 0.180 , 0.221	Depositor DCC
$R_{free}$ test set	1530 reflections (5.03%)	wwPDB-VP
Wilson B-factor (Å <sup>2</sup> )	21.2	Xtriage
Anisotropy	0.757	Xtriage
Bulk solvent $k_{sol}$ (e/Å <sup>3</sup> ), $B_{sol}$ (Å <sup>2</sup> )	0.34 , 54.2	EDS
L-test for twinning <sup>2</sup>	$\langle  L  \rangle = 0.49$ , $\langle L^2 \rangle = 0.33$	Xtriage
Estimated twinning fraction	No twinning to report.	Xtriage
$F_o, F_c$ correlation	0.96	EDS
Total number of atoms	3745	wwPDB-VP
Average B, all atoms (Å <sup>2</sup> )	28.0	wwPDB-VP

Xtriage's analysis on translational NCS is as follows: *The largest off-origin peak in the Patterson function is 6.00% of the height of the origin peak. No significant pseudotranslation is detected.*

<sup>1</sup>Intensities estimated from amplitudes.

<sup>2</sup>Theoretical values of  $\langle |L| \rangle$ ,  $\langle L^2 \rangle$  for acentric reflections are 0.5, 0.333 respectively for untwinned datasets, and 0.375, 0.2 for perfectly twinned datasets.

## 5 Model quality

### 5.1 Standard geometry

Bond lengths and bond angles in the following residue types are not validated in this section: PG4, CL, ACT

The Z score for a bond length (or angle) is the number of standard deviations the observed value is removed from the expected value. A bond length (or angle) with  $|Z| > 5$  is considered an outlier worth inspection. RMSZ is the root-mean-square of all Z scores of the bond lengths (or angles).

Mol	Chain	Bond lengths		Bond angles	
		RMSZ	$\# Z  > 5$	RMSZ	$\# Z  > 5$
1	A	0.49	0/1690	0.67	0/2273
1	B	0.47	0/1670	0.68	0/2249
All	All	0.48	0/3360	0.67	0/4522

There are no bond length outliers.

There are no bond angle outliers.

There are no chirality outliers.

There are no planarity outliers.

### 5.2 Too-close contacts

In the following table, the Non-H and H(model) columns list the number of non-hydrogen atoms and hydrogen atoms in the chain respectively. The H(added) column lists the number of hydrogen atoms added and optimized by MolProbity. The Clashes column lists the number of clashes within the asymmetric unit, whereas Symm-Clashes lists symmetry related clashes.

Mol	Chain	Non-H	H(model)	H(added)	Clashes	Symm-Clashes
1	A	1651	0	1716	13	0
1	B	1637	0	1687	14	0
2	A	1	0	0	0	0
2	B	1	0	0	0	0
3	A	4	0	3	0	0
3	B	4	0	3	0	0
4	A	83	0	112	8	0
4	B	58	0	76	8	0
5	A	152	0	0	0	0
5	B	154	0	0	0	0
All	All	3745	0	3597	27	0



The all-atom clashscore is defined as the number of clashes found per 1000 atoms (including hydrogen atoms). The all-atom clashscore for this structure is 4.

All (27) close contacts within the same asymmetric unit are listed below, sorted by their clash magnitude.

Atom-1	Atom-2	Interatomic distance (Å)	Clash overlap (Å)
1:B:84:LYS:HD2	4:B:252:PG4:H71	1.49	0.95
1:B:180:GLY:HA2	4:B:257:PG4:H51	1.72	0.72
1:A:105:LYS:HE2	4:A:249:PG4:H41	1.76	0.66
1:A:94:LYS:HD3	4:A:251:PG4:H42	1.77	0.66
1:A:94:LYS:HZ3	4:A:251:PG4:H71	1.60	0.64
1:B:84:LYS:HE3	4:B:252:PG4:H31	1.81	0.63
1:A:94:LYS:HE2	4:A:251:PG4:H22	1.89	0.54
1:A:84:LYS:HD2	4:A:254:PG4:H71	1.90	0.53
1:B:233:LEU:HD22	1:B:241:ILE:HG21	1.94	0.50
1:A:170:THR:HG21	4:A:260:PG4:H11	1.93	0.49
1:A:233:LEU:HD22	1:A:241:ILE:HG21	1.94	0.49
4:A:256:PG4:H51	1:B:161:GLY:HA2	1.94	0.49
1:B:171:ALA:O	1:B:191:ALA:HA	2.15	0.47
1:B:105:LYS:HE2	4:B:250:PG4:H52	1.96	0.47
1:A:171:ALA:O	1:A:191:ALA:HA	2.16	0.45
1:B:120:GLY:HA2	4:B:258:PG4:H31	1.99	0.45
4:B:258:PG4:H32	4:B:259:PG4:H21	1.99	0.45
1:A:192:ASN:OD1	4:A:260:PG4:H72	2.17	0.43
1:A:236:LYS:HA	1:B:101:PHE:HD2	1.83	0.43
1:B:105:LYS:HZ1	4:B:250:PG4:H41	1.82	0.43
1:B:66:ASP:HB3	1:B:109:THR:HG22	2.01	0.43
1:A:43:GLU:HA	1:A:65:THR:HG21	2.02	0.41
1:A:132:THR:O	1:A:152:CYS:HA	2.21	0.41
1:B:132:THR:O	1:B:152:CYS:HA	2.20	0.41
1:B:170:THR:HB	4:B:253:PG4:H62	2.02	0.41
1:B:69:ILE:HG21	1:B:79:ILE:HD12	2.02	0.40
1:A:102:LYS:O	1:A:103:LYS:HB2	2.21	0.40

There are no symmetry-related clashes.

## 5.3 Torsion angles ⓘ

### 5.3.1 Protein backbone ⓘ

In the following table, the Percentiles column shows the percent Ramachandran outliers of the chain as a percentile score with respect to all X-ray entries followed by that with respect to entries of similar resolution.

The Analysed column shows the number of residues for which the backbone conformation was analysed, and the total number of residues.

Mol	Chain	Analysed	Favoured	Allowed	Outliers	Percentiles	
1	A	225/221 (102%)	223 (99%)	2 (1%)	0	100	100
1	B	223/221 (101%)	220 (99%)	3 (1%)	0	100	100
All	All	448/442 (101%)	443 (99%)	5 (1%)	0	100	100

There are no Ramachandran outliers to report.

### 5.3.2 Protein sidechains ⓘ

In the following table, the Percentiles column shows the percent sidechain outliers of the chain as a percentile score with respect to all X-ray entries followed by that with respect to entries of similar resolution.

The Analysed column shows the number of residues for which the sidechain conformation was analysed, and the total number of residues.

Mol	Chain	Analysed	Rotameric	Outliers	Percentiles	
1	A	186/180 (103%)	185 (100%)	1 (0%)	88	89
1	B	183/180 (102%)	179 (98%)	4 (2%)	52	46
All	All	369/360 (102%)	364 (99%)	5 (1%)	73	64

All (5) residues with a non-rotameric sidechain are listed below:

Mol	Chain	Res	Type
1	A	29	GLN
1	B	85[A]	ASP
1	B	85[B]	ASP
1	B	119	LYS
1	B	190	ARG

Some sidechains can be flipped to improve hydrogen bonding and reduce clashes. There are no such sidechains identified.

### 5.3.3 RNA ⓘ

There are no RNA molecules in this entry.

## 5.4 Non-standard residues in protein, DNA, RNA chains [i](#)

There are no non-standard protein/DNA/RNA residues in this entry.

## 5.5 Carbohydrates [i](#)

There are no carbohydrates in this entry.

## 5.6 Ligand geometry [i](#)

Of 18 ligands modelled in this entry, 2 are monoatomic - leaving 16 for Mogul analysis.

In the following table, the Counts columns list the number of bonds (or angles) for which Mogul statistics could be retrieved, the number of bonds (or angles) that are observed in the model and the number of bonds (or angles) that are defined in the Chemical Component Dictionary. The Link column lists molecule types, if any, to which the group is linked. The Z score for a bond length (or angle) is the number of standard deviations the observed value is removed from the expected value. A bond length (or angle) with  $|Z| > 2$  is considered an outlier worth inspection. RMSZ is the root-mean-square of all Z scores of the bond lengths (or angles).

Mol	Type	Chain	Res	Link	Bond lengths			Bond angles		
					Counts	RMSZ	$\# Z  > 2$	Counts	RMSZ	$\# Z  > 2$
4	PG4	A	260	-	12,12,12	0.39	0	11,11,11	1.13	2 (18%)
3	ACT	A	247	-	1,3,3	2.94	1 (100%)	0,3,3	0.00	-
4	PG4	B	259	-	3,3,12	0.56	0	2,2,11	0.14	0
4	PG4	B	253	-	10,10,12	0.80	0	9,9,11	0.62	0
4	PG4	B	258	-	6,6,12	0.59	0	5,5,11	0.76	0
4	PG4	A	249	-	12,12,12	0.76	0	11,11,11	0.68	0
4	PG4	A	262	-	6,6,12	0.79	0	5,5,11	0.60	0
4	PG4	A	256	-	9,9,12	0.94	0	8,8,11	0.64	0
4	PG4	A	254	-	12,12,12	0.74	0	11,11,11	0.60	0
4	PG4	A	261	-	6,6,12	0.83	0	5,5,11	0.50	0
4	PG4	A	251	-	12,12,12	0.99	0	11,11,11	0.98	0
4	PG4	B	257	-	9,9,12	0.81	0	8,8,11	0.70	0
4	PG4	B	250	-	12,12,12	0.74	0	11,11,11	0.76	0
4	PG4	B	252	-	12,12,12	0.94	0	11,11,11	0.63	0
4	PG4	A	255	-	6,6,12	0.76	0	5,5,11	0.82	0
3	ACT	B	248	-	1,3,3	2.95	1 (100%)	0,3,3	0.00	-

In the following table, the Chirals column lists the number of chiral outliers, the number of chiral centers analysed, the number of these observed in the model and the number defined in the Chemical Component Dictionary. Similar counts are reported in the Torsion and Rings columns. '-' means no outliers of that kind were identified.

Mol	Type	Chain	Res	Link	Chirals	Torsions	Rings
4	PG4	A	260	-	-	7/10/10/10	-
4	PG4	B	259	-	-	1/1/1/10	-
4	PG4	B	253	-	-	3/8/8/10	-
4	PG4	B	258	-	-	2/4/4/10	-
4	PG4	A	249	-	-	5/10/10/10	-
4	PG4	A	262	-	-	3/4/4/10	-
4	PG4	A	256	-	-	2/7/7/10	-
4	PG4	A	254	-	-	3/10/10/10	-
4	PG4	A	261	-	-	2/4/4/10	-
4	PG4	A	251	-	-	8/10/10/10	-
4	PG4	B	257	-	-	2/7/7/10	-
4	PG4	B	250	-	-	8/10/10/10	-
4	PG4	B	252	-	-	7/10/10/10	-
4	PG4	A	255	-	-	1/4/4/10	-

All (2) bond length outliers are listed below:

Mol	Chain	Res	Type	Atoms	Z	Observed(Å)	Ideal(Å)
3	B	248	ACT	CH3-C	2.95	1.52	1.48
3	A	247	ACT	CH3-C	2.94	1.52	1.48

All (2) bond angle outliers are listed below:

Mol	Chain	Res	Type	Atoms	Z	Observed(°)	Ideal(°)
4	A	260	PG4	C5-O3-C4	-2.09	104.24	113.29
4	A	260	PG4	C3-O2-C2	-2.07	104.33	113.29

There are no chirality outliers.

All (54) torsion outliers are listed below:

Mol	Chain	Res	Type	Atoms
4	A	251	PG4	C4-C3-O2-C2
4	B	253	PG4	O3-C5-C6-O4
4	A	256	PG4	O2-C3-C4-O3
4	A	260	PG4	O2-C3-C4-O3
4	B	257	PG4	O2-C3-C4-O3
4	B	252	PG4	O2-C3-C4-O3
4	A	249	PG4	O2-C3-C4-O3
4	B	253	PG4	O1-C1-C2-O2

*Continued on next page...*

*Continued from previous page...*

Mol	Chain	Res	Type	Atoms
4	A	262	PG4	O2-C3-C4-O3
4	B	250	PG4	O1-C1-C2-O2
4	A	251	PG4	O3-C5-C6-O4
4	A	251	PG4	O2-C3-C4-O3
4	A	251	PG4	C3-C4-O3-C5
4	B	252	PG4	O4-C7-C8-O5
4	A	249	PG4	O4-C7-C8-O5
4	B	250	PG4	O4-C7-C8-O5
4	B	252	PG4	O1-C1-C2-O2
4	B	258	PG4	O1-C1-C2-O2
4	A	254	PG4	O4-C7-C8-O5
4	B	250	PG4	O3-C5-C6-O4
4	A	254	PG4	O1-C1-C2-O2
4	A	260	PG4	O3-C5-C6-O4
4	A	249	PG4	O3-C5-C6-O4
4	A	251	PG4	O4-C7-C8-O5
4	B	258	PG4	C1-C2-O2-C3
4	B	250	PG4	C3-C4-O3-C5
4	A	254	PG4	C6-C5-O3-C4
4	B	257	PG4	C3-C4-O3-C5
4	A	251	PG4	C8-C7-O4-C6
4	A	249	PG4	C6-C5-O3-C4
4	B	250	PG4	C4-C3-O2-C2
4	A	262	PG4	C4-C3-O2-C2
4	B	252	PG4	C5-C6-O4-C7
4	A	260	PG4	C4-C3-O2-C2
4	A	262	PG4	C1-C2-O2-C3
4	A	249	PG4	C3-C4-O3-C5
4	B	250	PG4	C8-C7-O4-C6
4	B	259	PG4	O1-C1-C2-O2
4	A	256	PG4	C3-C4-O3-C5
4	A	251	PG4	C1-C2-O2-C3
4	A	261	PG4	O1-C1-C2-O2
4	B	252	PG4	C3-C4-O3-C5
4	B	250	PG4	C6-C5-O3-C4
4	A	261	PG4	O2-C3-C4-O3
4	A	260	PG4	C3-C4-O3-C5
4	A	251	PG4	C5-C6-O4-C7
4	B	250	PG4	O2-C3-C4-O3
4	A	260	PG4	C5-C6-O4-C7
4	B	252	PG4	O3-C5-C6-O4
4	B	252	PG4	C8-C7-O4-C6

*Continued on next page...*

*Continued from previous page...*

Mol	Chain	Res	Type	Atoms
4	A	260	PG4	C6-C5-O3-C4
4	A	255	PG4	C4-C3-O2-C2
4	A	260	PG4	C1-C2-O2-C3
4	B	253	PG4	O2-C3-C4-O3

There are no ring outliers.

11 monomers are involved in 16 short contacts:

Mol	Chain	Res	Type	Clashes	Symm-Clashes
4	A	260	PG4	2	0
4	B	259	PG4	1	0
4	B	253	PG4	1	0
4	B	258	PG4	2	0
4	A	249	PG4	1	0
4	A	256	PG4	1	0
4	A	254	PG4	1	0
4	A	251	PG4	3	0
4	B	257	PG4	1	0
4	B	250	PG4	2	0
4	B	252	PG4	2	0

## 5.7 Other polymers [i](#)

There are no such residues in this entry.

## 5.8 Polymer linkage issues [i](#)

There are no chain breaks in this entry.

## 6 Fit of model and data [i](#)

### 6.1 Protein, DNA and RNA chains [i](#)

In the following table, the column labelled ‘#RSRZ> 2’ contains the number (and percentage) of RSRZ outliers, followed by percent RSRZ outliers for the chain as percentile scores relative to all X-ray entries and entries of similar resolution. The OWAB column contains the minimum, median, 95<sup>th</sup> percentile and maximum values of the occupancy-weighted average B-factor per residue. The column labelled ‘Q< 0.9’ lists the number of (and percentage) of residues with an average occupancy less than 0.9.

Mol	Chain	Analysed	<RSRZ>	#RSRZ>2	OWAB(Å <sup>2</sup> )	Q<0.9
1	A	216/221 (97%)	-0.39	1 (0%) 91 91	15, 23, 43, 63	0
1	B	216/221 (97%)	-0.40	0 100 100	15, 22, 49, 66	0
All	All	432/442 (97%)	-0.40	1 (0%) 95 95	15, 23, 47, 66	0

All (1) RSRZ outliers are listed below:

Mol	Chain	Res	Type	RSRZ
1	A	27	GLY	2.2

### 6.2 Non-standard residues in protein, DNA, RNA chains [i](#)

There are no non-standard protein/DNA/RNA residues in this entry.

### 6.3 Carbohydrates [i](#)

There are no carbohydrates in this entry.

### 6.4 Ligands [i](#)

In the following table, the Atoms column lists the number of modelled atoms in the group and the number defined in the chemical component dictionary. The B-factors column lists the minimum, median, 95<sup>th</sup> percentile and maximum values of B factors of atoms in the group. The column labelled ‘Q< 0.9’ lists the number of atoms with occupancy less than 0.9.

Mol	Type	Chain	Res	Atoms	RSCC	RSR	B-factors(Å <sup>2</sup> )	Q<0.9
4	PG4	B	252	13/13	0.72	0.20	56,57,60,63	0
4	PG4	A	251	13/13	0.72	0.31	54,55,60,65	0
4	PG4	B	257	10/13	0.73	0.30	57,58,61,64	0
4	PG4	A	254	13/13	0.74	0.24	67,68,74,75	0

*Continued on next page...*

*Continued from previous page...*

Mol	Type	Chain	Res	Atoms	RSCC	RSR	B-factors( $\text{\AA}^2$ )	Q<0.9
4	PG4	A	256	10/13	0.77	0.19	52,53,56,59	0
4	PG4	A	262	7/13	0.78	0.29	43,43,47,50	0
4	PG4	A	261	7/13	0.80	0.21	46,47,50,53	0
4	PG4	B	253	11/13	0.83	0.15	48,49,52,55	0
4	PG4	B	250	13/13	0.84	0.14	50,50,54,58	0
4	PG4	B	259	4/13	0.84	0.22	47,48,49,52	0
4	PG4	B	258	7/13	0.85	0.18	70,71,74,78	0
4	PG4	A	255	7/13	0.85	0.16	52,53,56,59	0
4	PG4	A	260	13/13	0.86	0.29	56,57,64,65	0
4	PG4	A	249	13/13	0.86	0.15	48,49,55,55	0
3	ACT	B	248	4/4	0.94	0.14	27,27,29,29	0
3	ACT	A	247	4/4	0.96	0.11	28,28,28,29	0
2	CL	A	246	1/1	0.96	0.11	41,41,41,41	0
2	CL	B	245	1/1	0.99	0.04	38,38,38,38	0

## 6.5 Other polymers [i](#)

There are no such residues in this entry.