



# wwPDB X-ray Structure Validation Summary Report ⓘ

May 19, 2022 – 02:48 pm BST

PDB ID : 7PGY  
Title : Structure of light-adapted AsLOV2 wild type  
Authors : Gelfert, R.; Weyand, M.; Moeglich, A.  
Deposited on : 2021-08-16  
Resolution : 1.09 Å(reported)

This is a wwPDB X-ray Structure Validation Summary Report for a publicly released PDB entry.

We welcome your comments at [validation@mail.wwpdb.org](mailto:validation@mail.wwpdb.org)

A user guide is available at

<https://www.wwpdb.org/validation/2017/XrayValidationReportHelp>

with specific help available everywhere you see the ⓘ symbol.

---

The following versions of software and data (see [references ⓘ](#)) were used in the production of this report:

MolProbity	:	4.02b-467
Mogul	:	1.8.4, CSD as541be (2020)
Xtriage (Phenix)	:	1.13
EDS	:	2.28.1
buster-report	:	1.1.7 (2018)
Percentile statistics	:	20191225.v01 (using entries in the PDB archive December 25th 2019)
Refmac	:	5.8.0267
CCP4	:	7.1.010 (Gargrove)
Ideal geometry (proteins)	:	Engh & Huber (2001)
Ideal geometry (DNA, RNA)	:	Parkinson et al. (1996)
Validation Pipeline (wwPDB-VP)	:	2.28.1

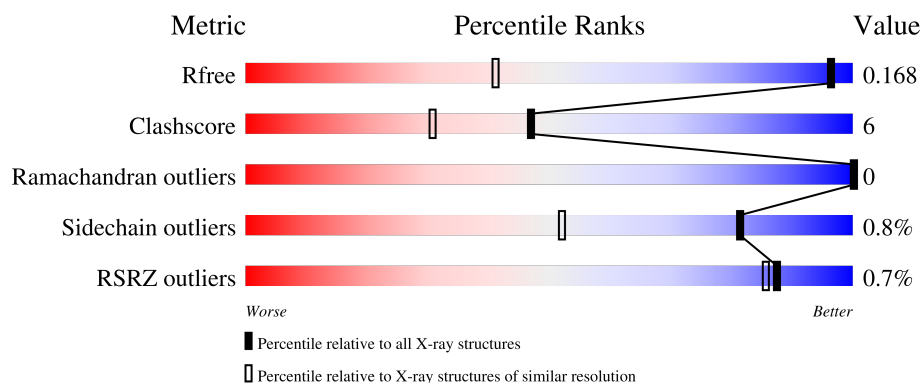
# 1 Overall quality at a glance

The following experimental techniques were used to determine the structure:

## *X-RAY DIFFRACTION*

The reported resolution of this entry is 1.09 Å.

Percentile scores (ranging between 0-100) for global validation metrics of the entry are shown in the following graphic. The table shows the number of entries on which the scores are based.



Metric	Whole archive (#Entries)	Similar resolution (#Entries, resolution range(Å))
$R_{free}$	130704	1619 (1.14-1.06)
Clashscore	141614	1671 (1.14-1.06)
Ramachandran outliers	138981	1615 (1.14-1.06)
Sidechain outliers	138945	1613 (1.14-1.06)
RSRZ outliers	127900	1588 (1.14-1.06)

The table below summarises the geometric issues observed across the polymeric chains and their fit to the electron density. The red, orange, yellow and green segments of the lower bar indicate the fraction of residues that contain outliers for  $\geq 3$ , 2, 1 and 0 types of geometric quality criteria respectively. A grey segment represents the fraction of residues that are not modelled. The numeric value for each fraction is indicated below the corresponding segment, with a dot representing fractions  $\leq 5\%$ . The upper red bar (where present) indicates the fraction of residues that have poor fit to the electron density. The numeric value is given above the bar.

Mol	Chain	Length	Quality of chain
1	AAA	146	<div> <div style="width: 100%; height: 10px; background: linear-gradient(to right, red, orange, yellow, green);"></div> <div style="display: flex; justify-content: space-between; width: 100%;"> <span>%</span> <span>89%</span> <span>10%</span> </div> </div>

The following table lists non-polymeric compounds, carbohydrate monomers and non-standard residues in protein, DNA, RNA chains that are outliers for geometric or electron-density-fit criteria:

Mol	Type	Chain	Res	Chirality	Geometry	Clashes	Electron density
4	GOL	AAA	606[A]	-	-	X	-

*Continued on next page...*

*Continued from previous page...*

Mol	Type	Chain	Res	Chirality	Geometry	Clashes	Electron density
6	EDO	AAA	614	-	-	X	-

## 2 Entry composition

There are 8 unique types of molecules in this entry. The entry contains 2153 atoms, of which 0 are hydrogens and 0 are deuteriums.

In the tables below, the ZeroOcc column contains the number of atoms modelled with zero occupancy, the AltConf column contains the number of residues with at least one atom in alternate conformation and the Trace column contains the number of residues modelled with at most 2 atoms.

- Molecule 1 is a protein called NPH1-1.

Mol	Chain	Residues	Atoms					ZeroOcc	AltConf	Trace
1	AAA	146	Total	C	N	O	S	0	77	0
			1777	1120	305	346	6			

There are 3 discrepancies between the modelled and reference sequences:

Chain	Residue	Modelled	Actual	Comment	Reference
AAA	401	GLY	-	expression tag	UNP O49003
AAA	402	GLU	-	expression tag	UNP O49003
AAA	403	PHE	-	expression tag	UNP O49003

- Molecule 2 is CALCIUM ION (three-letter code: CA) (formula: Ca).

Mol	Chain	Residues	Atoms		ZeroOcc	AltConf
2	AAA	2	Total	Ca	0	2
			4	4		

- Molecule 3 is CHLORIDE ION (three-letter code: CL) (formula: Cl).

Mol	Chain	Residues	Atoms		ZeroOcc	AltConf
3	AAA	2	Total	Cl	0	2
			4	4		

- Molecule 4 is GLYCEROL (three-letter code: GOL) (formula: C<sub>3</sub>H<sub>8</sub>O<sub>3</sub>).



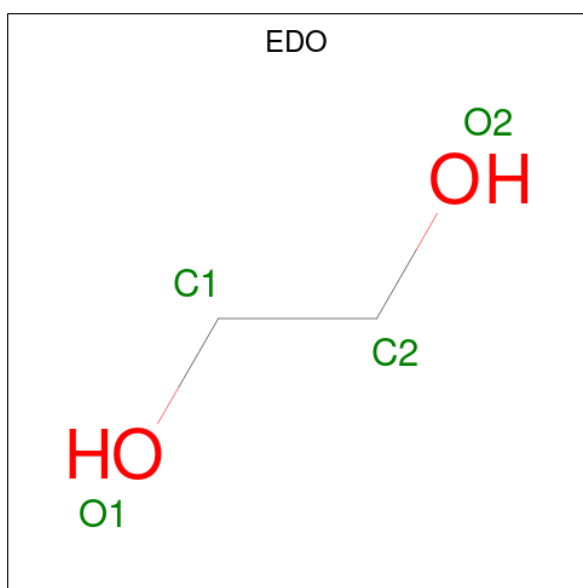
Mol	Chain	Residues	Atoms			ZeroOcc	AltConf
4	AAA	1	Total	C	O	0	1
			12	6	6		
4	AAA	1	Total	C	O	0	1
			6	3	3		
4	AAA	1	Total	C	O	0	0
			6	3	3		
4	AAA	1	Total	C	O	0	1
			12	6	6		
4	AAA	1	Total	C	O	0	0
			6	3	3		
4	AAA	1	Total	C	O	0	1
			6	3	3		
4	AAA	1	Total	C	O	0	1
			12	6	6		

- Molecule 5 is ACETATE ION (three-letter code: ACT) (formula:  $C_2H_3O_2$ ).



Mol	Chain	Residues	Atoms			ZeroOcc	AltConf
5	AAA	1	Total	C	O	0	0
			4	2	2		
5	AAA	1	Total	C	O	0	0
			4	2	2		

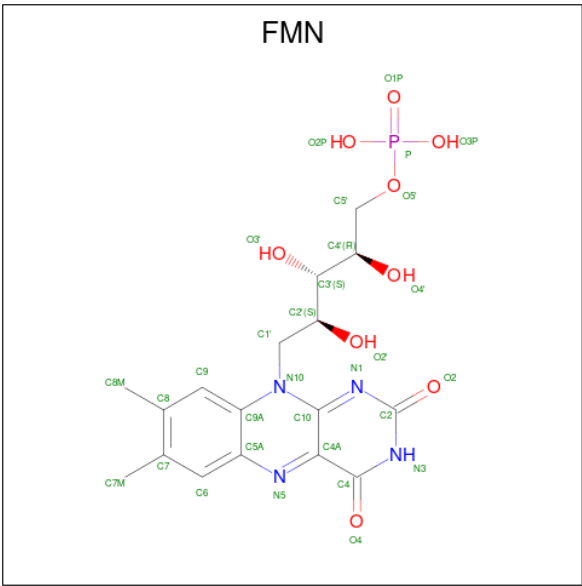
- Molecule 6 is 1,2-ETHANEDIOL (three-letter code: EDO) (formula:  $C_2H_6O_2$ ).



Mol	Chain	Residues	Atoms			ZeroOcc	AltConf
6	AAA	1	Total	C	O	0	0
			4	2	2		

- Molecule 7 is FLAVIN MONONUCLEOTIDE (three-letter code: FMN) (formula:  $C_{17}H_{21}N_4O_9P$ )

(labeled as "Ligand of Interest" by depositor).



Mol	Chain	Residues	Atoms					ZeroOcc	AltConf
7	AAA	1	Total	C	N	O	P	0	1
			62	34	8	18	2		

- Molecule 8 is water.

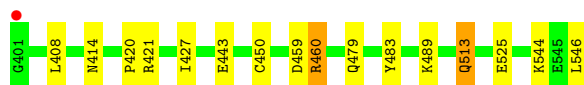
Mol	Chain	Residues	Atoms		ZeroOcc	AltConf
8	AAA	195	Total	O	0	84
			234	234		

### 3 Residue-property plots [i](#)

These plots are drawn for all protein, RNA, DNA and oligosaccharide chains in the entry. The first graphic for a chain summarises the proportions of the various outlier classes displayed in the second graphic. The second graphic shows the sequence view annotated by issues in geometry and electron density. Residues are color-coded according to the number of geometric quality criteria for which they contain at least one outlier: green = 0, yellow = 1, orange = 2 and red = 3 or more. A red dot above a residue indicates a poor fit to the electron density ( $RSRZ > 2$ ). Stretches of 2 or more consecutive residues without any outlier are shown as a green connector. Residues present in the sample, but not in the model, are shown in grey.

- Molecule 1: NPH1-1

Chain AAA: 





## 4 Data and refinement statistics

Property	Value	Source
Space group	P 21 21 21	Depositor
Cell constants a, b, c, $\alpha$ , $\beta$ , $\gamma$	35.61Å 56.01Å 66.52Å 90.00° 90.00° 90.00°	Depositor
Resolution (Å)	42.84 – 1.09 42.84 – 1.09	Depositor EDS
% Data completeness (in resolution range)	99.2 (42.84-1.09) 99.2 (42.84-1.09)	Depositor EDS
$R_{merge}$	(Not available)	Depositor
$R_{sym}$	(Not available)	Depositor
$\langle I/\sigma(I) \rangle$ <sup>1</sup>	1.14 (at 1.09Å)	Xtriage
Refinement program	REFMAC 5.8.0267	Depositor
R, $R_{free}$	0.123 , 0.161 0.130 , 0.168	Depositor DCC
$R_{free}$ test set	2100 reflections (3.76%)	wwPDB-VP
Wilson B-factor (Å <sup>2</sup> )	11.8	Xtriage
Anisotropy	0.735	Xtriage
Bulk solvent $k_{sol}$ (e/Å <sup>3</sup> ), $B_{sol}$ (Å <sup>2</sup> )	(Not available) , (Not available)	EDS
L-test for twinning <sup>2</sup>	$\langle  L  \rangle = 0.49$ , $\langle L^2 \rangle = 0.32$	Xtriage
Estimated twinning fraction	No twinning to report.	Xtriage
$F_o, F_c$ correlation	0.98	EDS
Total number of atoms	2153	wwPDB-VP
Average B, all atoms (Å <sup>2</sup> )	17.0	wwPDB-VP

Xtriage's analysis on translational NCS is as follows: *The largest off-origin peak in the Patterson function is 7.91% of the height of the origin peak. No significant pseudotranslation is detected.*

<sup>1</sup>Intensities estimated from amplitudes.

<sup>2</sup>Theoretical values of  $\langle |L| \rangle$ ,  $\langle L^2 \rangle$  for acentric reflections are 0.5, 0.333 respectively for untwinned datasets, and 0.375, 0.2 for perfectly twinned datasets.

## 5 Model quality [i](#)

### 5.1 Standard geometry [i](#)

Bond lengths and bond angles in the following residue types are not validated in this section: FMN, CL, CA, EDO, GOL, ACT

The Z score for a bond length (or angle) is the number of standard deviations the observed value is removed from the expected value. A bond length (or angle) with  $|Z| > 5$  is considered an outlier worth inspection. RMSZ is the root-mean-square of all Z scores of the bond lengths (or angles).

Mol	Chain	Bond lengths		Bond angles	
		RMSZ	$\# Z  > 5$	RMSZ	$\# Z  > 5$
1	AAA	0.76	0/1924	0.92	3/2583 (0.1%)

There are no bond length outliers.

All (3) bond angle outliers are listed below:

Mol	Chain	Res	Type	Atoms	Z	Observed( $^{\circ}$ )	Ideal( $^{\circ}$ )
1	AAA	460[A]	ARG	NE-CZ-NH2	-5.71	117.44	120.30
1	AAA	460[B]	ARG	NE-CZ-NH2	-5.71	117.44	120.30
1	AAA	460[C]	ARG	NE-CZ-NH2	-5.71	117.44	120.30

There are no chirality outliers.

There are no planarity outliers.

### 5.2 Too-close contacts [i](#)

In the following table, the Non-H and H(model) columns list the number of non-hydrogen atoms and hydrogen atoms in the chain respectively. The H(added) column lists the number of hydrogen atoms added and optimized by MolProbity. The Clashes column lists the number of clashes within the asymmetric unit, whereas Symm-Clashes lists symmetry-related clashes.

Mol	Chain	Non-H	H(model)	H(added)	Clashes	Symm-Clashes
1	AAA	1777	0	1768	19	0
2	AAA	4	0	0	0	0
3	AAA	4	0	0	2	0
4	AAA	60	0	80	9	0
5	AAA	8	0	6	1	0
6	AAA	4	0	6	5	0
7	AAA	62	0	38	0	0
8	AAA	234	0	0	6	0

*Continued on next page...*

*Continued from previous page...*

Mol	Chain	Non-H	H(model)	H(added)	Clashes	Symm-Clashes
All	All	2153	0	1898	24	0

The all-atom clashscore is defined as the number of clashes found per 1000 atoms (including hydrogen atoms). The all-atom clashscore for this structure is 6.

The worst 5 of 24 close contacts within the same asymmetric unit are listed below, sorted by their clash magnitude.

Atom-1	Atom-2	Interatomic distance (Å)	Clash overlap (Å)
1:AAA:460[A]:ARG:HG2	4:AAA:606[A]:GOL:H31	1.57	0.84
1:AAA:420[A]:PRO:HB2	4:AAA:611[A]:GOL:H2	1.64	0.78
3:AAA:603[B]:CL:CL	8:AAA:732:HOH:O	2.49	0.66
1:AAA:408[B]:LEU:HD13	1:AAA:546[B]:LEU:HD21	1.80	0.64
1:AAA:408[B]:LEU:HD13	1:AAA:546[B]:LEU:CD2	2.29	0.62

There are no symmetry-related clashes.

## 5.3 Torsion angles [i](#)

### 5.3.1 Protein backbone [i](#)

In the following table, the Percentiles column shows the percent Ramachandran outliers of the chain as a percentile score with respect to all X-ray entries followed by that with respect to entries of similar resolution.

The Analysed column shows the number of residues for which the backbone conformation was analysed, and the total number of residues.

Mol	Chain	Analysed	Favoured	Allowed	Outliers	Percentiles	
1	AAA	227/146 (156%)	224 (99%)	3 (1%)	0	100	100

There are no Ramachandran outliers to report.

### 5.3.2 Protein sidechains [i](#)

In the following table, the Percentiles column shows the percent sidechain outliers of the chain as a percentile score with respect to all X-ray entries followed by that with respect to entries of similar resolution.

The Analysed column shows the number of residues for which the sidechain conformation was analysed, and the total number of residues.

Mol	Chain	Analysed	Rotameric	Outliers	Percentiles
1	AAA	209/129 (162%)	207 (99%)	2 (1%)	76 44

All (2) residues with a non-rotameric sidechain are listed below:

Mol	Chain	Res	Type
1	AAA	513[A]	GLN
1	AAA	513[B]	GLN

Sometimes sidechains can be flipped to improve hydrogen bonding and reduce clashes. There are no such sidechains identified.

### 5.3.3 RNA ⓘ

There are no RNA molecules in this entry.

## 5.4 Non-standard residues in protein, DNA, RNA chains ⓘ

There are no non-standard protein/DNA/RNA residues in this entry.

## 5.5 Carbohydrates ⓘ

There are no monosaccharides in this entry.

## 5.6 Ligand geometry ⓘ

Of 23 ligands modelled in this entry, 8 are monoatomic - leaving 15 for Mogul analysis.

In the following table, the Counts columns list the number of bonds (or angles) for which Mogul statistics could be retrieved, the number of bonds (or angles) that are observed in the model and the number of bonds (or angles) that are defined in the Chemical Component Dictionary. The Link column lists molecule types, if any, to which the group is linked. The Z score for a bond length (or angle) is the number of standard deviations the observed value is removed from the expected value. A bond length (or angle) with  $|Z| > 2$  is considered an outlier worth inspection. RMSZ is the root-mean-square of all Z scores of the bond lengths (or angles).

Mol	Type	Chain	Res	Link	Bond lengths			Bond angles		
					Counts	RMSZ	$\# Z  > 2$	Counts	RMSZ	$\# Z  > 2$
7	FMN	AAA	615[B]	-	31,33,33	1.36	2 (6%)	40,50,50	2.14	5 (12%)
6	EDO	AAA	614	-	3,3,3	0.27	0	2,2,2	1.14	0
4	GOL	AAA	605[B]	-	5,5,5	0.21	0	5,5,5	0.34	0
5	ACT	AAA	613	-	1,3,3	1.11	0	0,3,3	-	-

Mol	Type	Chain	Res	Link	Bond lengths			Bond angles		
					Counts	RMSZ	# Z  > 2	Counts	RMSZ	# Z  > 2
4	GOL	AAA	611[B]	-	5,5,5	0.17	0	5,5,5	0.43	0
4	GOL	AAA	608[A]	-	5,5,5	0.16	0	5,5,5	0.42	0
5	ACT	AAA	612	-	1,3,3	4.40	1 (100%)	0,3,3	-	-
7	FMN	AAA	615[A]	-	31,33,33	1.38	3 (9%)	40,50,50	2.19	5 (12%)
4	GOL	AAA	606[A]	-	5,5,5	0.32	0	5,5,5	0.51	0
4	GOL	AAA	609	-	5,5,5	0.24	0	5,5,5	0.27	0
4	GOL	AAA	605[A]	-	5,5,5	0.08	0	5,5,5	0.32	0
4	GOL	AAA	610[A]	-	5,5,5	0.19	0	5,5,5	0.64	0
4	GOL	AAA	608[B]	-	5,5,5	0.06	0	5,5,5	0.36	0
4	GOL	AAA	611[A]	-	5,5,5	0.15	0	5,5,5	0.41	0
4	GOL	AAA	607	-	5,5,5	0.16	0	5,5,5	0.44	0

In the following table, the Chirals column lists the number of chiral outliers, the number of chiral centers analysed, the number of these observed in the model and the number defined in the Chemical Component Dictionary. Similar counts are reported in the Torsion and Rings columns. '-' means no outliers of that kind were identified.

Mol	Type	Chain	Res	Link	Chirals	Torsions	Rings
7	FMN	AAA	615[B]	-	-	1/18/18/18	0/3/3/3
6	EDO	AAA	614	-	-	0/1/1/1	-
4	GOL	AAA	605[B]	-	-	0/4/4/4	-
4	GOL	AAA	611[B]	-	-	4/4/4/4	-
4	GOL	AAA	608[A]	-	-	0/4/4/4	-
7	FMN	AAA	615[A]	-	-	1/18/18/18	0/3/3/3
4	GOL	AAA	606[A]	-	-	3/4/4/4	-
4	GOL	AAA	609	-	-	0/4/4/4	-
4	GOL	AAA	605[A]	-	-	4/4/4/4	-
4	GOL	AAA	610[A]	-	-	0/4/4/4	-
4	GOL	AAA	608[B]	-	-	3/4/4/4	-
4	GOL	AAA	611[A]	-	-	4/4/4/4	-
4	GOL	AAA	607	-	-	0/4/4/4	-

The worst 5 of 6 bond length outliers are listed below:

Mol	Chain	Res	Type	Atoms	Z	Observed(Å)	Ideal(Å)
7	AAA	615[A]	FMN	C4A-C10	5.81	1.44	1.38
7	AAA	615[B]	FMN	C4A-C10	5.65	1.44	1.38
5	AAA	612	ACT	CH3-C	4.40	1.54	1.48
7	AAA	615[A]	FMN	C4-N3	3.19	1.38	1.33
7	AAA	615[B]	FMN	C4-N3	3.12	1.38	1.33

The worst 5 of 10 bond angle outliers are listed below:

Mol	Chain	Res	Type	Atoms	Z	Observed(°)	Ideal(°)
7	AAA	615[A]	FMN	C2-N3-C4	9.23	122.94	115.14
7	AAA	615[B]	FMN	C2-N3-C4	8.55	122.36	115.14
7	AAA	615[B]	FMN	C10-C4A-C4	-6.28	115.79	119.95
7	AAA	615[A]	FMN	C10-C4A-C4	-5.17	116.53	119.95
7	AAA	615[A]	FMN	C4A-C4-N3	-5.13	116.42	123.43

There are no chirality outliers.

5 of 20 torsion outliers are listed below:

Mol	Chain	Res	Type	Atoms
4	AAA	611[A]	GOL	C1-C2-C3-O3
4	AAA	611[B]	GOL	O1-C1-C2-C3
4	AAA	611[A]	GOL	O2-C2-C3-O3
4	AAA	605[A]	GOL	O1-C1-C2-C3
4	AAA	605[A]	GOL	C1-C2-C3-O3

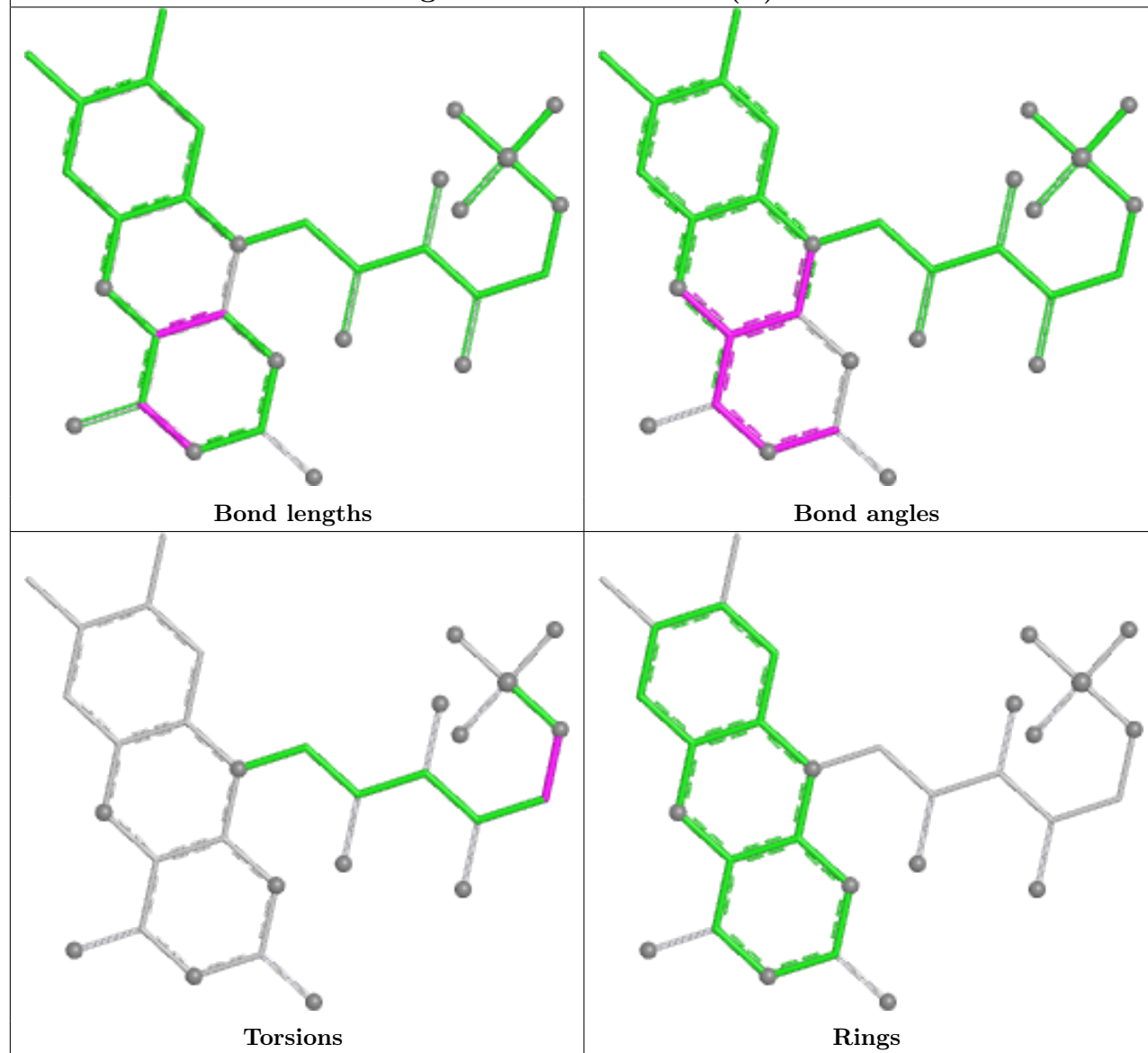
There are no ring outliers.

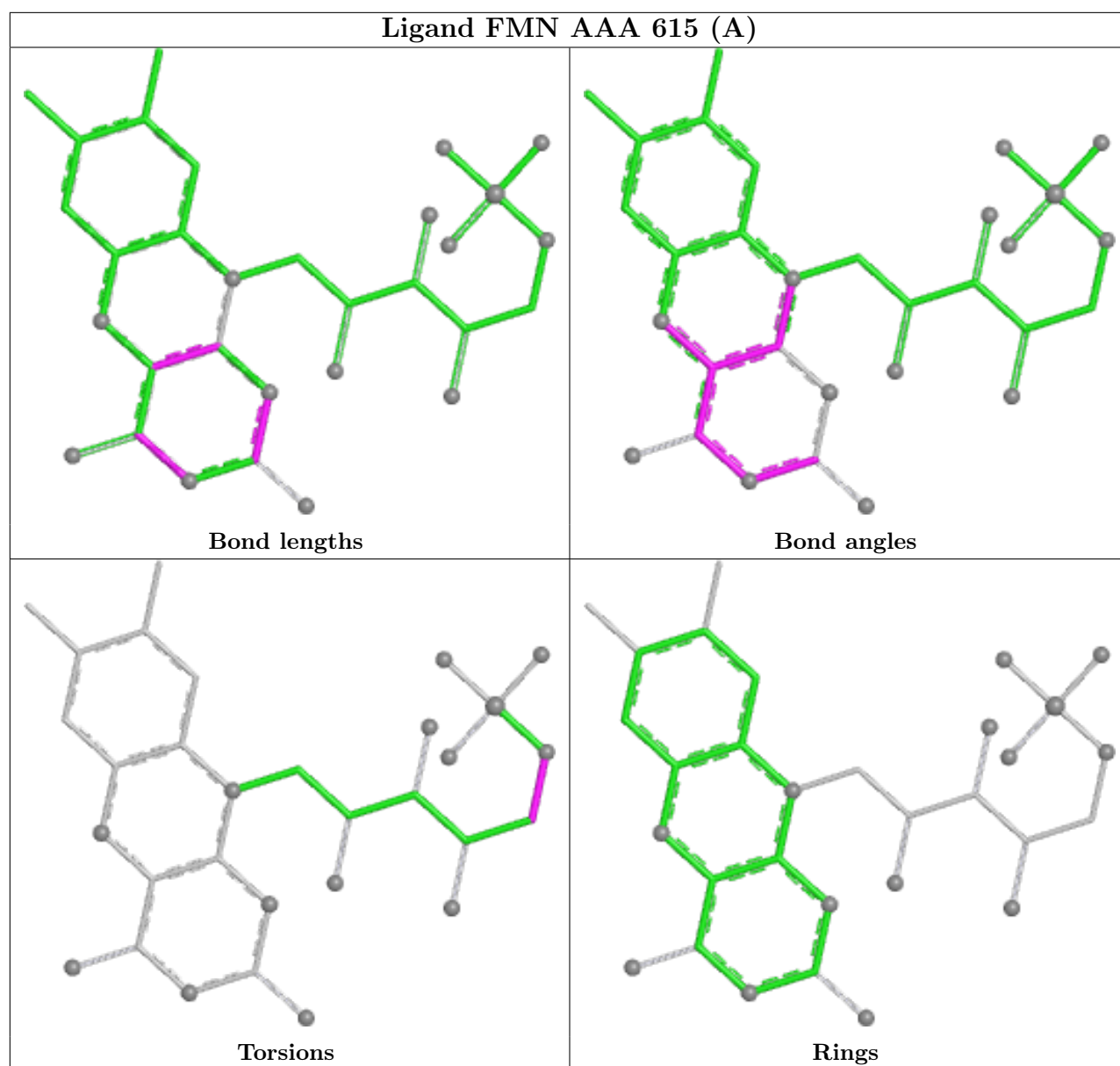
6 monomers are involved in 15 short contacts:

Mol	Chain	Res	Type	Clashes	Symm-Clashes
6	AAA	614	EDO	5	0
5	AAA	613	ACT	1	0
4	AAA	606[A]	GOL	6	0
4	AAA	609	GOL	1	0
4	AAA	610[A]	GOL	1	0
4	AAA	611[A]	GOL	1	0

The following is a two-dimensional graphical depiction of Mogul quality analysis of bond lengths, bond angles, torsion angles, and ring geometry for all instances of the Ligand of Interest. In addition, ligands with molecular weight > 250 and outliers as shown on the validation Tables will also be included. For torsion angles, if less than 5% of the Mogul distribution of torsion angles is within 10 degrees of the torsion angle in question, then that torsion angle is considered an outlier. Any bond that is central to one or more torsion angles identified as an outlier by Mogul will be highlighted in the graph. For rings, the root-mean-square deviation (RMSD) between the ring in question and similar rings identified by Mogul is calculated over all ring torsion angles. If the average RMSD is greater than 60 degrees and the minimal RMSD between the ring in question and any Mogul-identified rings is also greater than 60 degrees, then that ring is considered an outlier. The outliers are highlighted in purple. The color gray indicates Mogul did not find sufficient equivalents in the CSD to analyse the geometry.

## Ligand FMN AAA 615 (B)





## 5.7 Other polymers [i](#)

There are no such residues in this entry.

## 5.8 Polymer linkage issues [i](#)

There are no chain breaks in this entry.



## 6 Fit of model and data [i](#)

### 6.1 Protein, DNA and RNA chains [i](#)

In the following table, the column labelled ‘#RSRZ> 2’ contains the number (and percentage) of RSRZ outliers, followed by percent RSRZ outliers for the chain as percentile scores relative to all X-ray entries and entries of similar resolution. The OWAB column contains the minimum, median, 95<sup>th</sup> percentile and maximum values of the occupancy-weighted average B-factor per residue. The column labelled ‘Q< 0.9’ lists the number of (and percentage) of residues with an average occupancy less than 0.9.

Mol	Chain	Analysed	<RSRZ>	#RSRZ>2	OWAB(Å <sup>2</sup> )	Q<0.9
1	AAA	146/146 (100%)	-0.48	1 (0%) 87 86	10, 14, 22, 36	0

All (1) RSRZ outliers are listed below:

Mol	Chain	Res	Type	RSRZ
1	AAA	401	GLY	3.1

### 6.2 Non-standard residues in protein, DNA, RNA chains [i](#)

There are no non-standard protein/DNA/RNA residues in this entry.

### 6.3 Carbohydrates [i](#)

There are no monosaccharides in this entry.

### 6.4 Ligands [i](#)

In the following table, the Atoms column lists the number of modelled atoms in the group and the number defined in the chemical component dictionary. The B-factors column lists the minimum, median, 95<sup>th</sup> percentile and maximum values of B factors of atoms in the group. The column labelled ‘Q< 0.9’ lists the number of atoms with occupancy less than 0.9.

Mol	Type	Chain	Res	Atoms	RSCC	RSR	B-factors(Å <sup>2</sup> )	Q<0.9
4	GOL	AAA	611[A]	6/6	0.72	0.21	34,35,37,39	6
4	GOL	AAA	611[B]	6/6	0.72	0.21	40,43,45,46	6
5	ACT	AAA	612	4/4	0.85	0.09	56,58,58,68	0
2	CA	AAA	602[B]	1/1	0.86	0.09	61,61,61,61	1
2	CA	AAA	602[A]	1/1	0.86	0.09	52,52,52,52	1
5	ACT	AAA	613	4/4	0.87	0.16	29,34,37,62	0

*Continued on next page...*

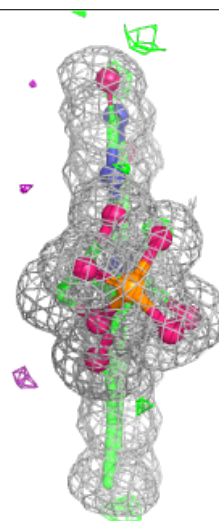
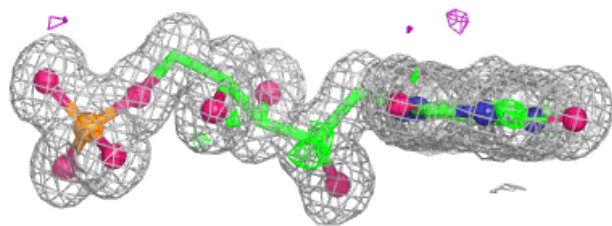
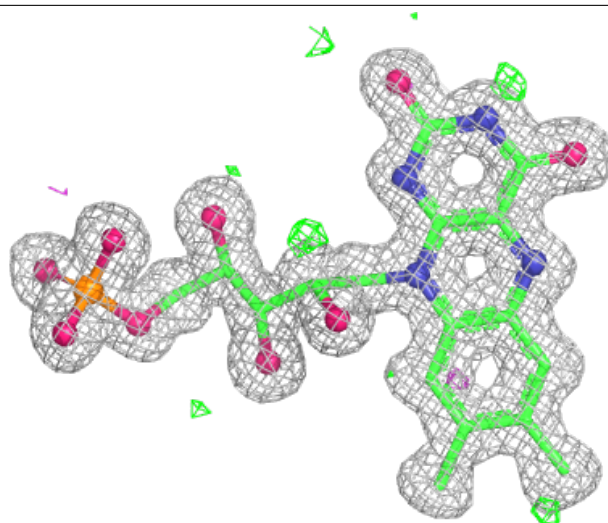
*Continued from previous page...*

Mol	Type	Chain	Res	Atoms	RSCC	RSR	B-factors( $\text{\AA}^2$ )	Q<0.9
4	GOL	AAA	606[A]	6/6	0.88	0.15	19,27,42,43	6
4	GOL	AAA	608[A]	6/6	0.88	0.21	17,18,23,23	6
4	GOL	AAA	608[B]	6/6	0.88	0.21	18,19,20,21	6
4	GOL	AAA	609	6/6	0.88	0.17	35,41,52,53	0
4	GOL	AAA	610[A]	6/6	0.89	0.11	29,36,38,42	6
4	GOL	AAA	607	6/6	0.91	0.09	20,21,24,29	6
6	EDO	AAA	614	4/4	0.91	0.12	28,28,32,33	0
2	CA	AAA	601[B]	1/1	0.93	0.08	48,48,48,48	1
2	CA	AAA	601[A]	1/1	0.93	0.08	56,56,56,56	1
4	GOL	AAA	605[B]	6/6	0.94	0.13	14,18,19,23	6
4	GOL	AAA	605[A]	6/6	0.94	0.13	18,27,28,29	6
3	CL	AAA	603[B]	1/1	0.98	0.06	31,31,31,31	1
3	CL	AAA	603[A]	1/1	0.98	0.06	21,21,21,21	1
3	CL	AAA	604[B]	1/1	0.99	0.10	22,22,22,22	1
3	CL	AAA	604[A]	1/1	0.99	0.10	39,39,39,39	1
7	FMN	AAA	615[A]	31/31	0.99	0.04	9,11,15,17	31
7	FMN	AAA	615[B]	31/31	0.99	0.04	8,10,15,18	31

The following is a graphical depiction of the model fit to experimental electron density of all instances of the Ligand of Interest. In addition, ligands with molecular weight > 250 and outliers as shown on the geometry validation Tables will also be included. Each fit is shown from different orientation to approximate a three-dimensional view.

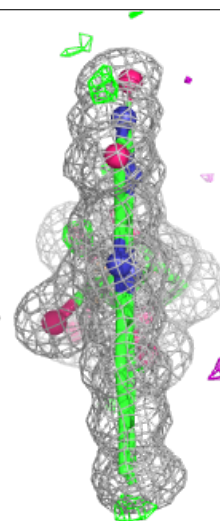
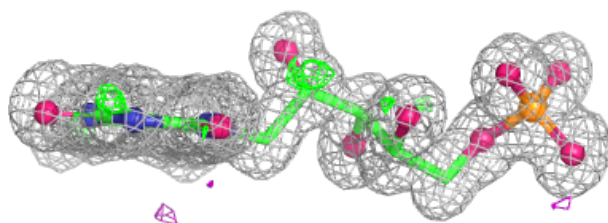
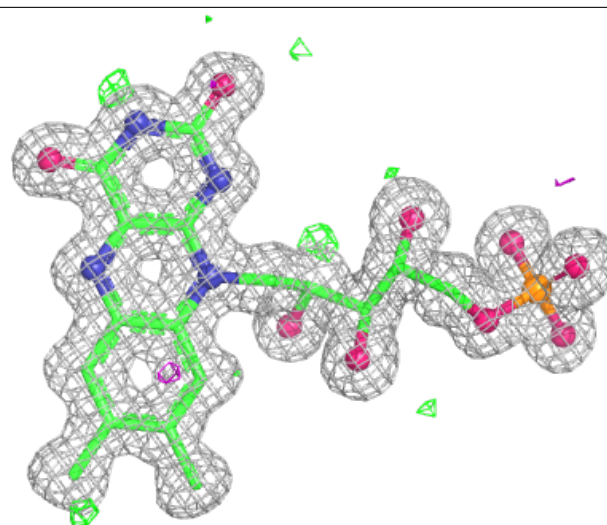
**Electron density around FMN AAA 615 (A):**

$2mF_o-DF_c$  (at 0.7 rmsd) in gray  
 $mF_o-DF_c$  (at 3 rmsd) in purple (negative)  
and green (positive)



**Electron density around FMN AAA 615 (B):**

$2mF_o-DF_c$  (at 0.7 rmsd) in gray  
 $mF_o-DF_c$  (at 3 rmsd) in purple (negative)  
and green (positive)



## 6.5 Other polymers [i](#)

There are no such residues in this entry.