



Full wwPDB X-ray Structure Validation Report ⓘ

May 25, 2020 – 12:11 am BST

PDB ID : 4PI9
Title : Crystal structure of S. Aureus Autolysin E in complex with muropeptide NAM-L-ALA-D-iGLU
Authors : Mihelic, M.; Renko, M.; Turk, D.
Deposited on : 2014-05-08
Resolution : 1.48 Å(reported)

This is a Full wwPDB X-ray Structure Validation Report for a publicly released PDB entry.

We welcome your comments at validation@mail.wwpdb.org

A user guide is available at

<https://www.wwpdb.org/validation/2017/XrayValidationReportHelp>

with specific help available everywhere you see the ⓘ symbol.

The following versions of software and data (see [references ⓘ](#)) were used in the production of this report:

MolProbity : 4.02b-467
Mogul : 1.8.5 (274361), CSD as541be (2020)
Xtriage (Phenix) : 1.13
EDS : 2.11
buster-report : 1.1.7 (2018)
Percentile statistics : 20191225.v01 (using entries in the PDB archive December 25th 2019)
Refmac : 5.8.0158
CCP4 : 7.0.044 (Gargrove)
Ideal geometry (proteins) : Engh & Huber (2001)
Ideal geometry (DNA, RNA) : Parkinson et al. (1996)
Validation Pipeline (wwPDB-VP) : 2.11

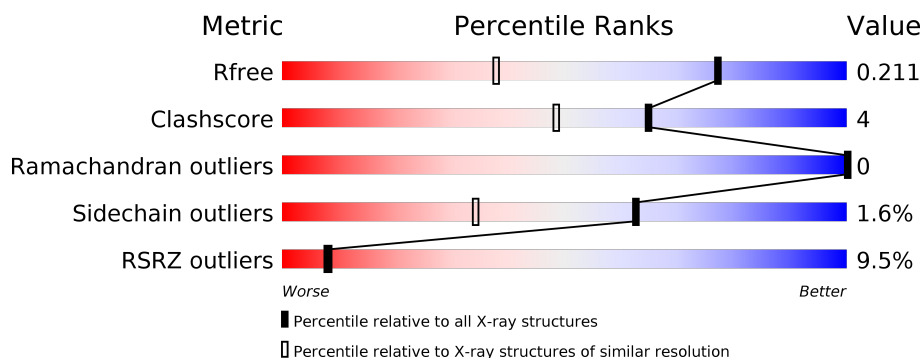
1 Overall quality at a glance

The following experimental techniques were used to determine the structure:

X-RAY DIFFRACTION

The reported resolution of this entry is 1.48 Å.

Percentile scores (ranging between 0-100) for global validation metrics of the entry are shown in the following graphic. The table shows the number of entries on which the scores are based.



Metric	Whole archive (#Entries)	Similar resolution (#Entries, resolution range(Å))
R_{free}	130704	4690 (1.50-1.46)
Clashscore	141614	4955 (1.50-1.46)
Ramachandran outliers	138981	4846 (1.50-1.46)
Sidechain outliers	138945	4844 (1.50-1.46)
RSRZ outliers	127900	4614 (1.50-1.46)

The table below summarises the geometric issues observed across the polymeric chains and their fit to the electron density. The red, orange, yellow and green segments on the lower bar indicate the fraction of residues that contain outliers for ≥ 3 , 2, 1 and 0 types of geometric quality criteria respectively. A grey segment represents the fraction of residues that are not modelled. The numeric value for each fraction is indicated below the corresponding segment, with a dot representing fractions $\leq 5\%$. The upper red bar (where present) indicates the fraction of residues that have poor fit to the electron density. The numeric value is given above the bar.

Mol	Chain	Length	Quality of chain
1	A	228	<div> <div>9%</div> <div>89%</div> <div>8%</div> </div>

2 Entry composition [i](#)

There are 5 unique types of molecules in this entry. The entry contains 2109 atoms, of which 0 are hydrogens and 0 are deuteriums.

In the tables below, the ZeroOcc column contains the number of atoms modelled with zero occupancy, the AltConf column contains the number of residues with at least one atom in alternate conformation and the Trace column contains the number of residues modelled with at most 2 atoms.

- Molecule 1 is a protein called Autolysin E.

Mol	Chain	Residues	Atoms					ZeroOcc	AltConf	Trace
1	A	222	Total	C	N	O	S	2	6	0
			1816	1148	310	351	7			

There are 4 discrepancies between the modelled and reference sequences:

Chain	Residue	Modelled	Actual	Comment	Reference
A	31	SER	-	expression tag	UNP A0A0H3JT72
A	32	ALA	-	expression tag	UNP A0A0H3JT72
A	33	ALA	-	expression tag	UNP A0A0H3JT72
A	34	ALA	-	expression tag	UNP A0A0H3JT72

- Molecule 2 is SULFATE ION (three-letter code: SO₄) (formula: O₄S).



Mol	Chain	Residues	Atoms			ZeroOcc	AltConf
2	A	1	Total	O	S	0	0
			5	4	1		

Continued on next page...

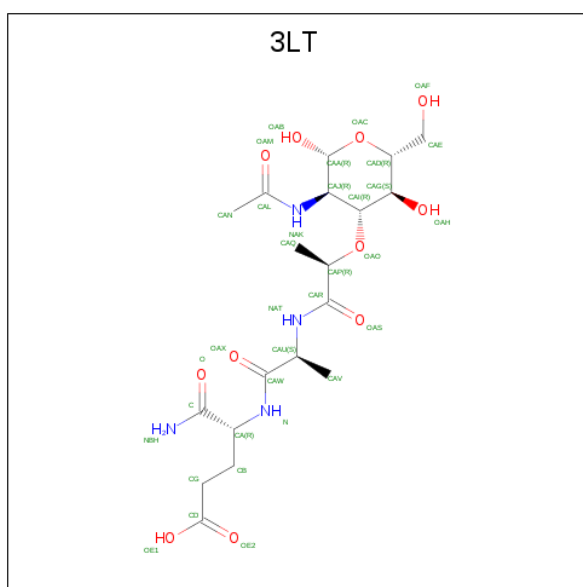
Continued from previous page...

Mol	Chain	Residues	Atoms			ZeroOcc	AltConf
2	A	1	Total	O	S	0	0
			5	4	1		
2	A	1	Total	O	S	0	0
			5	4	1		

- Molecule 3 is CHLORIDE ION (three-letter code: CL) (formula: Cl).

Mol	Chain	Residues	Atoms		ZeroOcc	AltConf
3	A	7	Total	Cl	0	0
			7	7		

- Molecule 4 is (4R)-4-[[[(2S)-2-[[[(2R)-2-[(2R,3S,4R,5R,6R)-5-acetamido-2-(hydroxymethyl)-3,6-bis(oxidanyl)oxan-4-yl]oxypropanoyl]amino]propanoyl]amino]-5-azanyl-5-oxidanylidene-pe ntanoic acid (three-letter code: 3LT) (formula: C₁₉H₃₂N₄O₁₁).



Mol	Chain	Residues	Atoms				ZeroOcc	AltConf
4	A	1	Total	C	N	O	0	0
			34	19	4	11		

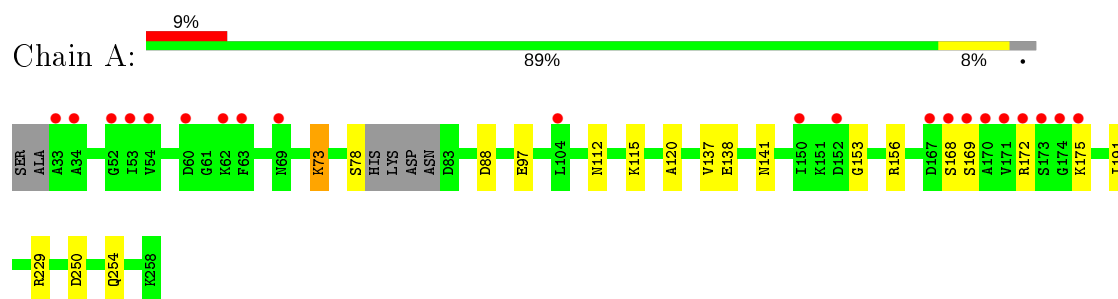
- Molecule 5 is water.

Mol	Chain	Residues	Atoms		ZeroOcc	AltConf
5	A	237	Total	O	0	0
			237	237		

3 Residue-property plots [i](#)

These plots are drawn for all protein, RNA and DNA chains in the entry. The first graphic for a chain summarises the proportions of the various outlier classes displayed in the second graphic. The second graphic shows the sequence view annotated by issues in geometry and electron density. Residues are color-coded according to the number of geometric quality criteria for which they contain at least one outlier: green = 0, yellow = 1, orange = 2 and red = 3 or more. A red dot above a residue indicates a poor fit to the electron density ($RSRZ > 2$). Stretches of 2 or more consecutive residues without any outlier are shown as a green connector. Residues present in the sample, but not in the model, are shown in grey.

• Molecule 1: Autolysin E



4 Data and refinement statistics

Property	Value	Source
Space group	P 21 21 21	Depositor
Cell constants a, b, c, α , β , γ	45.63Å 69.31Å 73.42Å 90.00° 90.00° 90.00°	Depositor
Resolution (Å)	38.75 – 1.48 38.75 – 1.48	Depositor EDS
% Data completeness (in resolution range)	99.5 (38.75-1.48) 99.6 (38.75-1.48)	Depositor EDS
R_{merge}	0.04	Depositor
R_{sym}	(Not available)	Depositor
$\langle I/\sigma(I) \rangle$ ¹	1.30 (at 1.48Å)	Xtriage
Refinement program	REFMAC 5.8.0071	Depositor
R, R_{free}	0.177 , 0.209 0.184 , 0.211	Depositor DCC
R_{free} test set	1981 reflections (5.00%)	wwPDB-VP
Wilson B-factor (Å ²)	19.9	Xtriage
Anisotropy	0.502	Xtriage
Bulk solvent k_{sol} (e/Å ³), B_{sol} (Å ²)	0.38 , 48.9	EDS
L-test for twinning ²	$\langle L \rangle = 0.45$, $\langle L^2 \rangle = 0.28$	Xtriage
Estimated twinning fraction	No twinning to report.	Xtriage
F_o, F_c correlation	0.97	EDS
Total number of atoms	2109	wwPDB-VP
Average B, all atoms (Å ²)	29.0	wwPDB-VP

Xtriage's analysis on translational NCS is as follows: *The largest off-origin peak in the Patterson function is 6.51% of the height of the origin peak. No significant pseudotranslation is detected.*

¹Intensities estimated from amplitudes.

²Theoretical values of $\langle |L| \rangle$, $\langle L^2 \rangle$ for acentric reflections are 0.5, 0.333 respectively for untwinned datasets, and 0.375, 0.2 for perfectly twinned datasets.

5 Model quality [i](#)

5.1 Standard geometry [i](#)

Bond lengths and bond angles in the following residue types are not validated in this section: 3LT, SO4, CL

The Z score for a bond length (or angle) is the number of standard deviations the observed value is removed from the expected value. A bond length (or angle) with $|Z| > 5$ is considered an outlier worth inspection. RMSZ is the root-mean-square of all Z scores of the bond lengths (or angles).

Mol	Chain	Bond lengths		Bond angles	
		RMSZ	$\# Z > 5$	RMSZ	$\# Z > 5$
1	A	0.78	1/1869 (0.1%)	0.89	4/2502 (0.2%)

All (1) bond length outliers are listed below:

Mol	Chain	Res	Type	Atoms	Z	Observed(Å)	Ideal(Å)
1	A	73	LYS	CD-CE	-6.17	1.35	1.51

All (4) bond angle outliers are listed below:

Mol	Chain	Res	Type	Atoms	Z	Observed(°)	Ideal(°)
1	A	73	LYS	CD-CE-NZ	-9.15	90.65	111.70
1	A	73	LYS	CG-CD-CE	-5.96	94.02	111.90
1	A	88	ASP	CB-CG-OD1	5.56	123.30	118.30
1	A	250	ASP	CB-CG-OD2	5.53	123.28	118.30

There are no chirality outliers.

There are no planarity outliers.

5.2 Too-close contacts [i](#)

In the following table, the Non-H and H(model) columns list the number of non-hydrogen atoms and hydrogen atoms in the chain respectively. The H(added) column lists the number of hydrogen atoms added and optimized by MolProbity. The Clashes column lists the number of clashes within the asymmetric unit, whereas Symm-Clashes lists symmetry related clashes.

Mol	Chain	Non-H	H(model)	H(added)	Clashes	Symm-Clashes
1	A	1816	0	1793	12	0
2	A	15	0	0	0	0
3	A	7	0	0	1	0

Continued on next page...

Continued from previous page...

Mol	Chain	Non-H	H(model)	H(added)	Clashes	Symm-Clashes
4	A	34	0	31	3	0
5	A	237	0	0	7	0
All	All	2109	0	1824	15	0

The all-atom clashscore is defined as the number of clashes found per 1000 atoms (including hydrogen atoms). The all-atom clashscore for this structure is 4.

All (15) close contacts within the same asymmetric unit are listed below, sorted by their clash magnitude.

Atom-1	Atom-2	Interatomic distance (Å)	Clash overlap (Å)
1:A:138:GLU:OE1	3:A:310:CL:CL	2.26	0.90
4:A:311:3LT:H23	4:A:311:3LT:H31	1.79	0.64
1:A:97:GLU:OE2	1:A:115:LYS:HB2	2.03	0.59
1:A:229[B]:ARG:HD3	5:A:564:HOH:O	2.06	0.56
4:A:311:3LT:CAU	4:A:311:3LT:H31	2.37	0.54
1:A:254:GLN:NE2	5:A:405:HOH:O	2.42	0.53
4:A:311:3LT:CAV	4:A:311:3LT:H31	2.41	0.51
1:A:120:ALA:HB2	1:A:191:ILE:HD13	1.92	0.50
1:A:137:VAL:HG11	5:A:551:HOH:O	2.15	0.46
1:A:73:LYS:HD3	5:A:619:HOH:O	2.17	0.43
1:A:141:ASN:HA	1:A:141:ASN:HD22	1.73	0.42
1:A:112:ASN:ND2	5:A:409:HOH:O	2.46	0.42
1:A:156[B]:ARG:NH2	5:A:413:HOH:O	2.52	0.41
1:A:153:GLY:N	5:A:415:HOH:O	2.53	0.41
1:A:168:SER:O	1:A:172:ARG:HG2	2.20	0.41

There are no symmetry-related clashes.

5.3 Torsion angles [i](#)

5.3.1 Protein backbone [i](#)

In the following table, the Percentiles column shows the percent Ramachandran outliers of the chain as a percentile score with respect to all X-ray entries followed by that with respect to entries of similar resolution.

The Analysed column shows the number of residues for which the backbone conformation was analysed, and the total number of residues.

Mol	Chain	Analysed	Favoured	Allowed	Outliers	Percentiles	
1	A	224/228 (98%)	221 (99%)	3 (1%)	0	100	100

There are no Ramachandran outliers to report.

5.3.2 Protein sidechains ⓘ

In the following table, the Percentiles column shows the percent sidechain outliers of the chain as a percentile score with respect to all X-ray entries followed by that with respect to entries of similar resolution.

The Analysed column shows the number of residues for which the sidechain conformation was analysed, and the total number of residues.

Mol	Chain	Analysed	Rotameric	Outliers	Percentiles	
1	A	194/193 (100%)	191 (98%)	3 (2%)	65	37

All (3) residues with a non-rotameric sidechain are listed below:

Mol	Chain	Res	Type
1	A	78	SER
1	A	169	SER
1	A	175	LYS

Some sidechains can be flipped to improve hydrogen bonding and reduce clashes. All (2) such sidechains are listed below:

Mol	Chain	Res	Type
1	A	112	ASN
1	A	141	ASN

5.3.3 RNA ⓘ

There are no RNA molecules in this entry.

5.4 Non-standard residues in protein, DNA, RNA chains ⓘ

There are no non-standard protein/DNA/RNA residues in this entry.

5.5 Carbohydrates [i](#)

There are no carbohydrates in this entry.

5.6 Ligand geometry [i](#)

Of 11 ligands modelled in this entry, 7 are monoatomic - leaving 4 for Mogul analysis.

In the following table, the Counts columns list the number of bonds (or angles) for which Mogul statistics could be retrieved, the number of bonds (or angles) that are observed in the model and the number of bonds (or angles) that are defined in the Chemical Component Dictionary. The Link column lists molecule types, if any, to which the group is linked. The Z score for a bond length (or angle) is the number of standard deviations the observed value is removed from the expected value. A bond length (or angle) with $|Z| > 2$ is considered an outlier worth inspection. RMSZ is the root-mean-square of all Z scores of the bond lengths (or angles).

Mol	Type	Chain	Res	Link	Bond lengths			Bond angles		
					Counts	RMSZ	# $ Z > 2$	Counts	RMSZ	# $ Z > 2$
4	3LT	A	311	-	31,34,34	2.43	5 (16%)	41,47,47	2.02	8 (19%)
2	SO4	A	303	-	4,4,4	0.40	0	6,6,6	0.54	0
2	SO4	A	301	-	4,4,4	0.79	0	6,6,6	0.94	0
2	SO4	A	302	-	4,4,4	0.37	0	6,6,6	0.27	0

In the following table, the Chirals column lists the number of chiral outliers, the number of chiral centers analysed, the number of these observed in the model and the number defined in the Chemical Component Dictionary. Similar counts are reported in the Torsion and Rings columns. '-' means no outliers of that kind were identified.

Mol	Type	Chain	Res	Link	Chirals	Torsions	Rings
4	3LT	A	311	-	-	6/33/55/55	0/1/1/1

All (5) bond length outliers are listed below:

Mol	Chain	Res	Type	Atoms	Z	Observed(Å)	Ideal(Å)
4	A	311	3LT	OAX-CAW	10.24	1.43	1.23
4	A	311	3LT	CAW-N	6.46	1.48	1.34
4	A	311	3LT	CAI-CAJ	2.44	1.57	1.53
4	A	311	3LT	CA-C	2.34	1.57	1.52
4	A	311	3LT	CAA-CAJ	2.25	1.55	1.52

All (8) bond angle outliers are listed below:

Mol	Chain	Res	Type	Atoms	Z	Observed(°)	Ideal(°)
4	A	311	3LT	OAX-CAW-N	-7.41	109.20	122.93

Continued on next page...

Continued from previous page...

Mol	Chain	Res	Type	Atoms	Z	Observed(°)	Ideal(°)
4	A	311	3LT	CA-N-CAW	-5.44	110.00	121.67
4	A	311	3LT	OAX-CAW-CAU	-5.24	108.89	120.52
4	A	311	3LT	CAW-CAU-NAT	2.77	118.46	111.60
4	A	311	3LT	OAF-CAE-CAD	-2.62	102.30	111.29
4	A	311	3LT	OAC-CAA-CAJ	-2.46	107.04	109.52
4	A	311	3LT	CAA-CAJ-CAI	-2.30	106.96	110.25
4	A	311	3LT	CAA-OAC-CAD	-2.05	109.79	113.66

There are no chirality outliers.

All (6) torsion outliers are listed below:

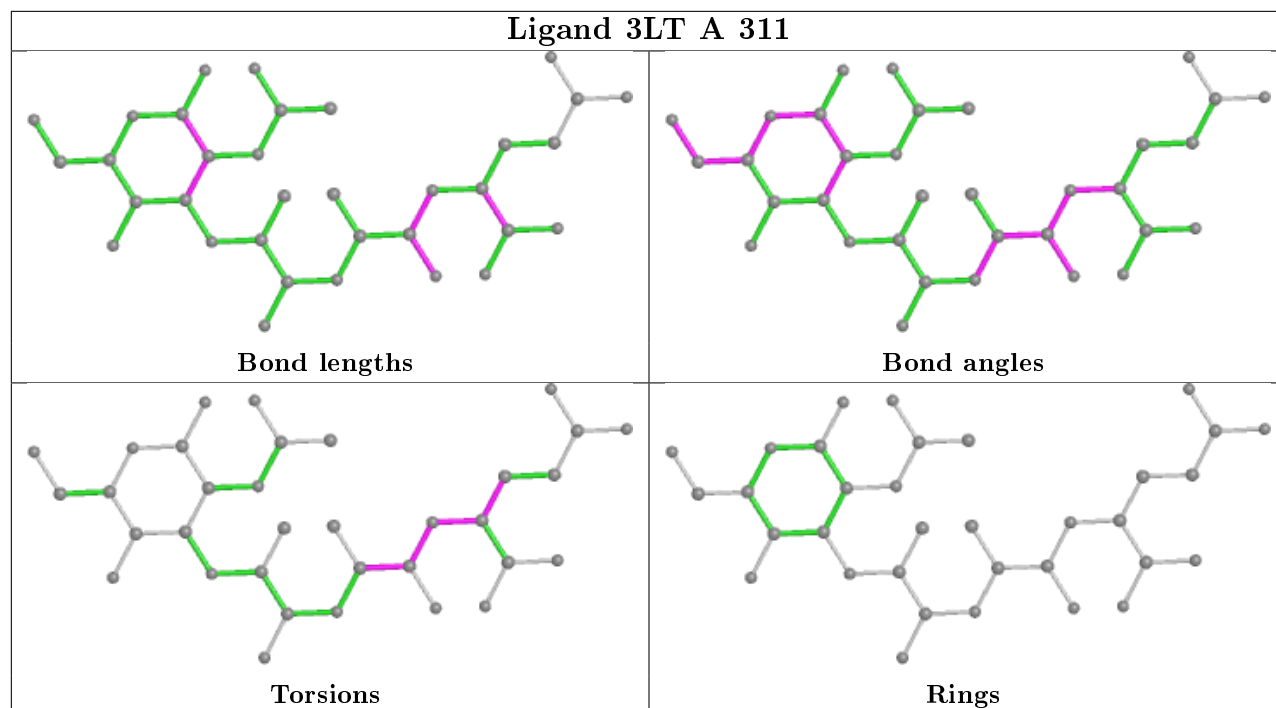
Mol	Chain	Res	Type	Atoms
4	A	311	3LT	CAU-CAW-N-CA
4	A	311	3LT	OAX-CAW-N-CA
4	A	311	3LT	N-CA-CB-CG
4	A	311	3LT	C-CA-CB-CG
4	A	311	3LT	CB-CA-N-CAW
4	A	311	3LT	NAT-CAU-CAW-OAX

There are no ring outliers.

1 monomer is involved in 3 short contacts:

Mol	Chain	Res	Type	Clashes	Symm-Clashes
4	A	311	3LT	3	0

The following is a two-dimensional graphical depiction of Mogul quality analysis of bond lengths, bond angles, torsion angles, and ring geometry for all instances of the Ligand of Interest. In addition, ligands with molecular weight > 250 and outliers as shown on the validation Tables will also be included. For torsion angles, if less than 5% of the Mogul distribution of torsion angles is within 10 degrees of the torsion angle in question, then that torsion angle is considered an outlier. Any bond that is central to one or more torsion angles identified as an outlier by Mogul will be highlighted in the graph. For rings, the root-mean-square deviation (RMSD) between the ring in question and similar rings identified by Mogul is calculated over all ring torsion angles. If the average RMSD is greater than 60 degrees and the minimal RMSD between the ring in question and any Mogul-identified rings is also greater than 60 degrees, then that ring is considered an outlier. The outliers are highlighted in purple. The color gray indicates Mogul did not find sufficient equivalents in the CSD to analyse the geometry.



5.7 Other polymers [i](#)

There are no such residues in this entry.

5.8 Polymer linkage issues [i](#)

There are no chain breaks in this entry.

6 Fit of model and data [i](#)

6.1 Protein, DNA and RNA chains [i](#)

In the following table, the column labelled ‘#RSRZ> 2’ contains the number (and percentage) of RSRZ outliers, followed by percent RSRZ outliers for the chain as percentile scores relative to all X-ray entries and entries of similar resolution. The OWAB column contains the minimum, median, 95th percentile and maximum values of the occupancy-weighted average B-factor per residue. The column labelled ‘Q< 0.9’ lists the number of (and percentage) of residues with an average occupancy less than 0.9.

Mol	Chain	Analysed	<RSRZ>	#RSRZ>2	OWAB(Å ²)	Q<0.9
1	A	222/228 (97%)	0.42	21 (9%) 8 8	14, 24, 55, 98	1 (0%)

All (21) RSRZ outliers are listed below:

Mol	Chain	Res	Type	RSRZ
1	A	172	ARG	9.3
1	A	171	VAL	5.9
1	A	34	ALA	5.1
1	A	169	SER	4.7
1	A	52	GLY	4.5
1	A	174	GLY	4.4
1	A	173	SER	4.2
1	A	175	LYS	4.2
1	A	168	SER	4.1
1	A	170	ALA	4.0
1	A	33	ALA	3.7
1	A	53	ILE	3.7
1	A	152	ASP	2.8
1	A	60	ASP	2.6
1	A	167	ASP	2.6
1	A	63	PHE	2.6
1	A	150	ILE	2.5
1	A	104	LEU	2.3
1	A	54	VAL	2.3
1	A	62	LYS	2.2
1	A	69	ASN	2.0

6.2 Non-standard residues in protein, DNA, RNA chains [i](#)

There are no non-standard protein/DNA/RNA residues in this entry.

6.3 Carbohydrates ⓘ

There are no carbohydrates in this entry.

6.4 Ligands ⓘ

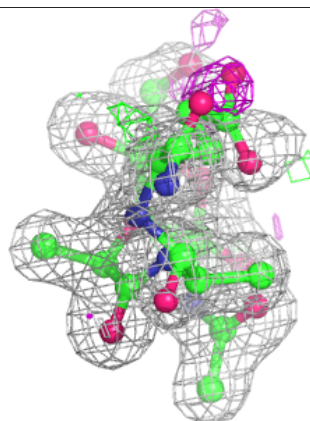
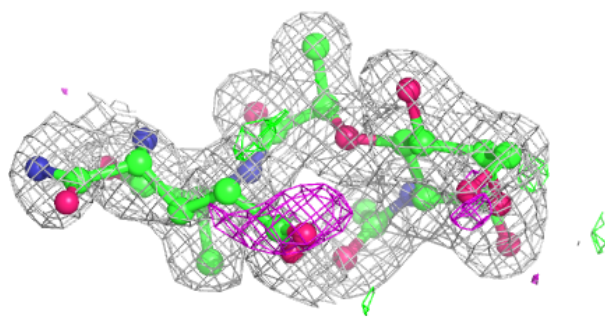
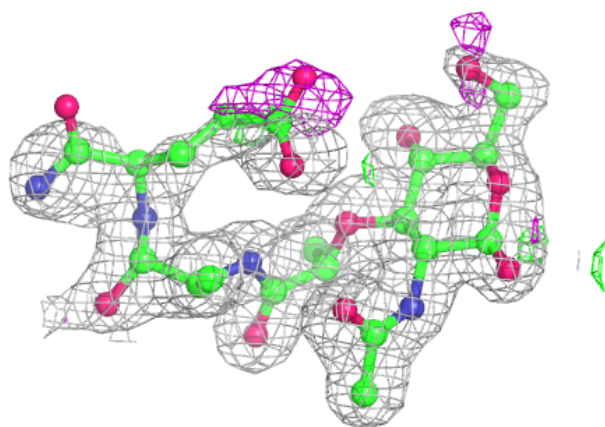
In the following table, the Atoms column lists the number of modelled atoms in the group and the number defined in the chemical component dictionary. The B-factors column lists the minimum, median, 95th percentile and maximum values of B factors of atoms in the group. The column labelled 'Q< 0.9' lists the number of atoms with occupancy less than 0.9.

Mol	Type	Chain	Res	Atoms	RSCC	RSR	B-factors(Å ²)	Q<0.9
2	SO4	A	301	5/5	0.79	0.20	28,34,45,47	5
2	SO4	A	302	5/5	0.83	0.15	92,95,96,96	0
3	CL	A	307	1/1	0.89	0.18	63,63,63,63	0
3	CL	A	304	1/1	0.90	0.14	48,48,48,48	0
2	SO4	A	303	5/5	0.91	0.25	33,41,43,44	5
4	3LT	A	311	34/34	0.92	0.14	19,30,57,73	0
3	CL	A	305	1/1	0.98	0.05	29,29,29,29	0
3	CL	A	306	1/1	0.98	0.04	24,24,24,24	0
3	CL	A	310	1/1	0.98	0.04	30,30,30,30	0
3	CL	A	309	1/1	0.98	0.05	31,31,31,31	0
3	CL	A	308	1/1	1.00	0.06	23,23,23,23	0

The following is a graphical depiction of the model fit to experimental electron density of all instances of the Ligand of Interest. In addition, ligands with molecular weight > 250 and outliers as shown on the geometry validation Tables will also be included. Each fit is shown from different orientation to approximate a three-dimensional view.

Electron density around 3LT A 311:

$2mF_o-DF_c$ (at 0.7 rmsd) in gray
 mF_o-DF_c (at 3 rmsd) in purple (negative)
and green (positive)



6.5 Other polymers [i](#)

There are no such residues in this entry.