



wwPDB X-ray Structure Validation Summary Report ⓘ

May 15, 2020 – 04:55 am BST

PDB ID : 4PLF
Title : Crystal structure of ancestral apicomplexan lactate dehydrogenase with lactate.
Authors : Boucher, J.I.; Jacobowitz, J.R.; Beckett, B.C.; Classen, S.; Theobald, D.L.
Deposited on : 2014-05-16
Resolution : 1.35 Å(reported)

This is a wwPDB X-ray Structure Validation Summary Report for a publicly released PDB entry.

We welcome your comments at validation@mail.wwpdb.org

A user guide is available at

<https://www.wwpdb.org/validation/2017/XrayValidationReportHelp>

with specific help available everywhere you see the ⓘ symbol.

The following versions of software and data (see [references ⓘ](#)) were used in the production of this report:

MolProbity : 4.02b-467
Mogul : 1.8.5 (274361), CSD as541be (2020)
Xtriage (Phenix) : 1.13
EDS : 2.11
buster-report : 1.1.7 (2018)
Percentile statistics : 20191225.v01 (using entries in the PDB archive December 25th 2019)
Refmac : 5.8.0158
CCP4 : 7.0.044 (Gargrove)
Ideal geometry (proteins) : Engh & Huber (2001)
Ideal geometry (DNA, RNA) : Parkinson et al. (1996)
Validation Pipeline (wwPDB-VP) : 2.11

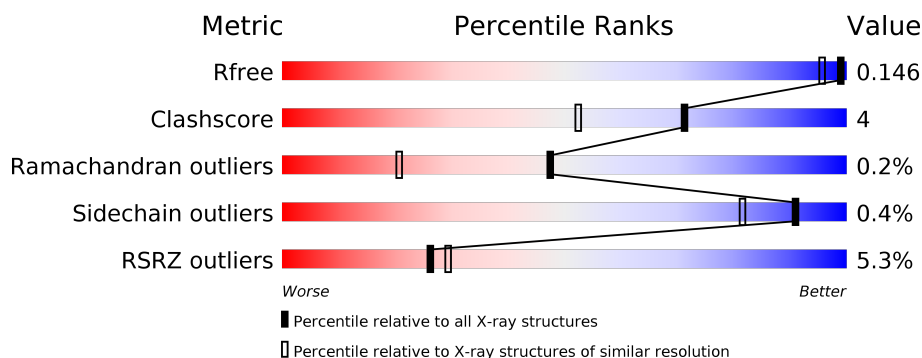
1 Overall quality at a glance ⓘ

The following experimental techniques were used to determine the structure:

X-RAY DIFFRACTION

The reported resolution of this entry is 1.35 Å.

Percentile scores (ranging between 0-100) for global validation metrics of the entry are shown in the following graphic. The table shows the number of entries on which the scores are based.



Metric	Whole archive (#Entries)	Similar resolution (#Entries, resolution range(Å))
R_{free}	130704	1509 (1.38-1.34)
Clashscore	141614	1551 (1.38-1.34)
Ramachandran outliers	138981	1530 (1.38-1.34)
Sidechain outliers	138945	1530 (1.38-1.34)
RSRZ outliers	127900	1487 (1.38-1.34)

The table below summarises the geometric issues observed across the polymeric chains and their fit to the electron density. The red, orange, yellow and green segments on the lower bar indicate the fraction of residues that contain outliers for ≥ 3 , 2, 1 and 0 types of geometric quality criteria respectively. A grey segment represents the fraction of residues that are not modelled. The numeric value for each fraction is indicated below the corresponding segment, with a dot representing fractions $\leq 5\%$. The upper red bar (where present) indicates the fraction of residues that have poor fit to the electron density. The numeric value is given above the bar.

Mol	Chain	Length	Quality of chain
1	A	334	<div> <div style="width: 10%; background-color: red;"></div> <div style="width: 87%; background-color: green;"></div> <div style="width: 10%; background-color: yellow;"></div> <div style="width: 5%; background-color: grey;"></div> </div> <div> <div style="width: 10%; background-color: red;"></div> <div style="width: 87%; background-color: green;"></div> <div style="width: 10%; background-color: yellow;"></div> <div style="width: 5%; background-color: grey;"></div> </div>
1	B	334	<div> <div style="width: 10%; background-color: red;"></div> <div style="width: 87%; background-color: green;"></div> <div style="width: 10%; background-color: yellow;"></div> <div style="width: 5%; background-color: grey;"></div> </div> <div> <div style="width: 10%; background-color: red;"></div> <div style="width: 87%; background-color: green;"></div> <div style="width: 10%; background-color: yellow;"></div> <div style="width: 5%; background-color: grey;"></div> </div>

2 Entry composition [i](#)

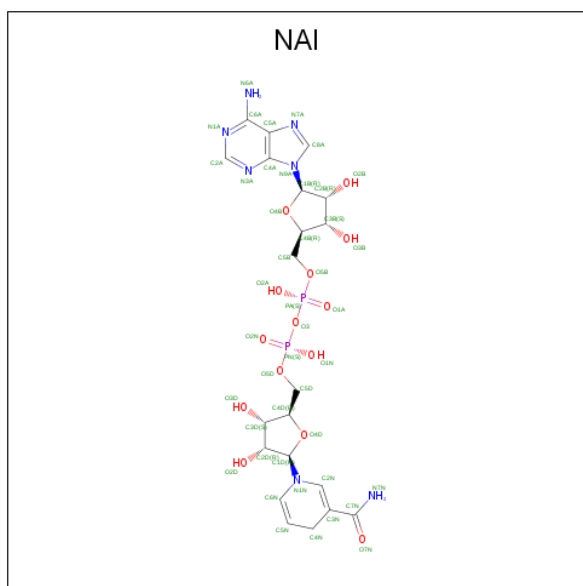
There are 5 unique types of molecules in this entry. The entry contains 11758 atoms, of which 5422 are hydrogens and 0 are deuteriums.

In the tables below, the ZeroOcc column contains the number of atoms modelled with zero occupancy, the AltConf column contains the number of residues with at least one atom in alternate conformation and the Trace column contains the number of residues modelled with at most 2 atoms.

- Molecule 1 is a protein called lactate dehydrogenase.

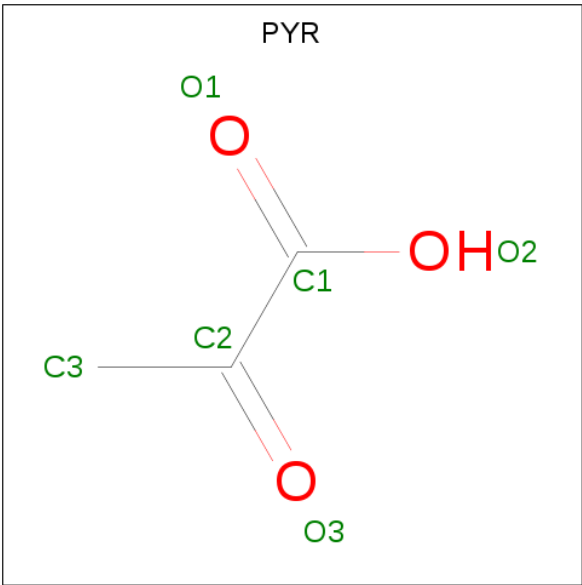
Mol	Chain	Residues	Atoms						ZeroOcc	AltConf	Trace
1	A	325	Total	C	H	N	O	S	0	14	0
			5262	1637	2679	440	488	18			
1	B	330	Total	C	H	N	O	S	0	15	0
			5313	1660	2684	455	497	17			

- Molecule 2 is 1,4-DIHYDRONICOTINAMIDE ADENINE DINUCLEOTIDE (three-letter code: NAI) (formula: $C_{21}H_{29}N_7O_{14}P_2$).



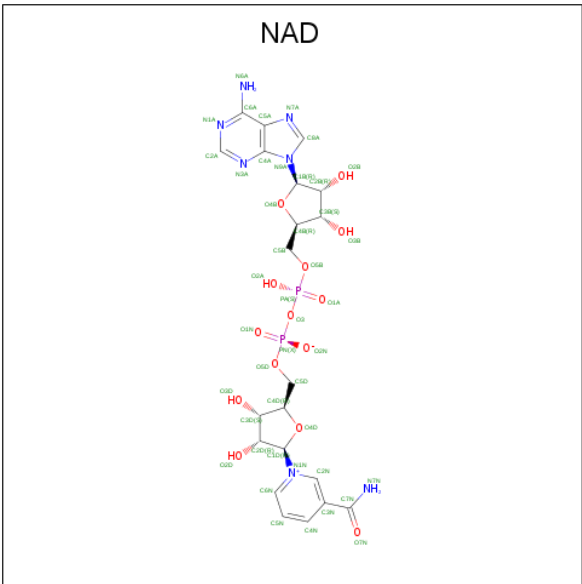
Mol	Chain	Residues	Atoms						ZeroOcc	AltConf
2	A	1	Total	C	H	N	O	P	0	0
			71	21	27	7	14	2		

- Molecule 3 is PYRUVIC ACID (three-letter code: PYR) (formula: $C_3H_4O_3$).



Mol	Chain	Residues	Atoms				ZeroOcc	AltConf
3	A	1	Total	C	H	O	0	0
			9	3	3	3		
3	B	1	Total	C	H	O	0	0
			9	3	3	3		

- Molecule 4 is NICOTINAMIDE-ADENINE-DINUCLEOTIDE (three-letter code: NAD) (formula: C₂₁H₂₇N₇O₁₄P₂).



Mol	Chain	Residues	Atoms						ZeroOcc	AltConf
4	B	1	Total	C	H	N	O	P	0	0
			70	21	26	7	14	2		

- Molecule 5 is water.

Mol	Chain	Residues	Atoms		ZeroOcc	AltConf
5	A	557	Total 557	O 557	0	0
5	B	467	Total 467	O 467	0	0

- Molecule 1: lactate dehydrogenase



4 Data and refinement statistics

Property	Value	Source
Space group	C 2 2 21	Depositor
Cell constants a, b, c, α , β , γ	113.44Å 143.19Å 91.42Å 90.00° 90.00° 90.00°	Depositor
Resolution (Å)	44.46 – 1.35 44.46 – 1.35	Depositor EDS
% Data completeness (in resolution range)	99.5 (44.46-1.35) 99.6 (44.46-1.35)	Depositor EDS
R_{merge}	0.08	Depositor
R_{sym}	(Not available)	Depositor
$\langle I/\sigma(I) \rangle$ ¹	1.19 (at 1.35Å)	Xtriage
Refinement program	PHENIX (phenix.refine: 1.8.4_1496)	Depositor
R, R_{free}	0.120 , 0.144 0.122 , 0.146	Depositor DCC
R_{free} test set	1737 reflections (1.08%)	wwPDB-VP
Wilson B-factor (Å ²)	12.8	Xtriage
Anisotropy	0.116	Xtriage
Bulk solvent k_{sol} (e/Å ³), B_{sol} (Å ²)	0.44 , 53.9	EDS
L-test for twinning ²	$\langle L \rangle = 0.49$, $\langle L^2 \rangle = 0.32$	Xtriage
Estimated twinning fraction	No twinning to report.	Xtriage
F_o, F_c correlation	0.98	EDS
Total number of atoms	11758	wwPDB-VP
Average B, all atoms (Å ²)	20.0	wwPDB-VP

Xtriage's analysis on translational NCS is as follows: *The largest off-origin peak in the Patterson function is 5.02% of the height of the origin peak. No significant pseudotranslation is detected.*

¹Intensities estimated from amplitudes.

²Theoretical values of $\langle |L| \rangle$, $\langle L^2 \rangle$ for acentric reflections are 0.5, 0.333 respectively for untwinned datasets, and 0.375, 0.2 for perfectly twinned datasets.

5 Model quality

5.1 Standard geometry

Bond lengths and bond angles in the following residue types are not validated in this section: PYR, NAI, NAD

The Z score for a bond length (or angle) is the number of standard deviations the observed value is removed from the expected value. A bond length (or angle) with $|Z| > 5$ is considered an outlier worth inspection. RMSZ is the root-mean-square of all Z scores of the bond lengths (or angles).

Mol	Chain	Bond lengths		Bond angles	
		RMSZ	# Z >5	RMSZ	# Z >5
1	A	1.09	14/2631 (0.5%)	0.93	3/3540 (0.1%)
1	B	1.01	4/2669 (0.1%)	0.94	7/3596 (0.2%)
All	All	1.05	18/5300 (0.3%)	0.94	10/7136 (0.1%)

Chiral center outliers are detected by calculating the chiral volume of a chiral center and verifying if the center is modelled as a planar moiety or with the opposite hand. A planarity outlier is detected by checking planarity of atoms in a peptide group, atoms in a mainchain group or atoms of a sidechain that are expected to be planar.

Mol	Chain	#Chirality outliers	#Planarity outliers
1	A	0	1
1	B	0	2
All	All	0	3

The worst 5 of 18 bond length outliers are listed below:

Mol	Chain	Res	Type	Atoms	Z	Observed(Å)	Ideal(Å)
1	A	297	GLU	CD-OE2	-8.87	1.15	1.25
1	B	306	GLU	CD-OE1	-8.64	1.16	1.25
1	A	254	GLU	CD-OE2	-7.43	1.17	1.25
1	A	169	GLU	CD-OE2	-6.91	1.18	1.25
1	A	299	GLU	CD-OE2	-6.14	1.18	1.25

The worst 5 of 10 bond angle outliers are listed below:

Mol	Chain	Res	Type	Atoms	Z	Observed(°)	Ideal(°)
1	B	212[A]	ARG	NE-CZ-NH1	9.90	125.25	120.30
1	B	212[B]	ARG	NE-CZ-NH1	9.90	125.25	120.30
1	B	188	ASP	CB-CG-OD2	-8.08	111.03	118.30
1	B	164	ARG	NE-CZ-NH1	6.82	123.71	120.30

Continued on next page...

Continued from previous page...

Mol	Chain	Res	Type	Atoms	Z	Observed(°)	Ideal(°)
1	B	212[A]	ARG	NE-CZ-NH2	-6.07	117.27	120.30

There are no chirality outliers.

All (3) planarity outliers are listed below:

Mol	Chain	Res	Type	Group
1	A	25	TYR	Sidechain
1	B	25	TYR	Sidechain
1	B	333	HIS	Peptide

5.2 Too-close contacts ⓘ

In the following table, the Non-H and H(model) columns list the number of non-hydrogen atoms and hydrogen atoms in the chain respectively. The H(added) column lists the number of hydrogen atoms added and optimized by MolProbity. The Clashes column lists the number of clashes within the asymmetric unit, whereas Symm-Clashes lists symmetry related clashes.

Mol	Chain	Non-H	H(model)	H(added)	Clashes	Symm-Clashes
1	A	2583	2679	2669	15	0
1	B	2629	2684	2657	19	0
2	A	44	27	27	3	0
3	A	6	3	3	2	0
3	B	6	3	3	1	0
4	B	44	26	26	4	0
5	A	557	0	0	8	3
5	B	467	0	0	11	2
All	All	6336	5422	5385	38	3

The all-atom clashscore is defined as the number of clashes found per 1000 atoms (including hydrogen atoms). The all-atom clashscore for this structure is 4.

The worst 5 of 38 close contacts within the same asymmetric unit are listed below, sorted by their clash magnitude.

Atom-1	Atom-2	Interatomic distance (Å)	Clash overlap (Å)
1:A:279[B]:MET:SD	5:A:767:HOH:O	2.25	0.95
1:B:254[B]:GLU:OE1	5:B:834:HOH:O	2.03	0.75
1:B:64[B]:LYS:NZ	5:B:502:HOH:O	2.19	0.74
1:B:254[A]:GLU:OE1	5:B:952:HOH:O	2.05	0.74
1:A:64[A]:LYS:NZ	5:A:821:HOH:O	2.23	0.72

All (3) symmetry-related close contacts are listed below. The label for Atom-2 includes the symmetry operator and encoded unit-cell translations to be applied.

Atom-1	Atom-2	Interatomic distance (Å)	Clash overlap (Å)
5:A:501:HOH:O	5:B:543:HOH:O[3_554]	1.93	0.27
5:A:601:HOH:O	5:A:634:HOH:O[4_555]	2.00	0.20
5:A:505:HOH:O	5:B:511:HOH:O[8_445]	2.07	0.13

5.3 Torsion angles ⓘ

5.3.1 Protein backbone ⓘ

In the following table, the Percentiles column shows the percent Ramachandran outliers of the chain as a percentile score with respect to all X-ray entries followed by that with respect to entries of similar resolution.

The Analysed column shows the number of residues for which the backbone conformation was analysed, and the total number of residues.

Mol	Chain	Analysed	Favoured	Allowed	Outliers	Percentiles	
1	A	338/334 (101%)	333 (98%)	4 (1%)	1 (0%)	41	18
1	B	343/334 (103%)	338 (98%)	5 (2%)	0	100	100
All	All	681/668 (102%)	671 (98%)	9 (1%)	1 (0%)	47	22

All (1) Ramachandran outliers are listed below:

Mol	Chain	Res	Type
1	A	328	GLU

5.3.2 Protein sidechains ⓘ

In the following table, the Percentiles column shows the percent sidechain outliers of the chain as a percentile score with respect to all X-ray entries followed by that with respect to entries of similar resolution.

The Analysed column shows the number of residues for which the sidechain conformation was analysed, and the total number of residues.

Mol	Chain	Analysed	Rotameric	Outliers	Percentiles	
1	A	286/281 (102%)	285 (100%)	1 (0%)	92	83
1	B	285/281 (101%)	284 (100%)	1 (0%)	91	81

Continued on next page...

Continued from previous page...

Mol	Chain	Analysed	Rotameric	Outliers	Percentiles	
All	All	571/562 (102%)	569 (100%)	2 (0%)	91	81

All (2) residues with a non-rotameric sidechain are listed below:

Mol	Chain	Res	Type
1	A	5	MET
1	B	311	SER

Some sidechains can be flipped to improve hydrogen bonding and reduce clashes. All (1) such sidechains are listed below:

Mol	Chain	Res	Type
1	B	331	HIS

5.3.3 RNA [i](#)

There are no RNA molecules in this entry.

5.4 Non-standard residues in protein, DNA, RNA chains [i](#)

There are no non-standard protein/DNA/RNA residues in this entry.

5.5 Carbohydrates [i](#)

There are no carbohydrates in this entry.

5.6 Ligand geometry [i](#)

4 ligands are modelled in this entry.

In the following table, the Counts columns list the number of bonds (or angles) for which Mogul statistics could be retrieved, the number of bonds (or angles) that are observed in the model and the number of bonds (or angles) that are defined in the Chemical Component Dictionary. The Link column lists molecule types, if any, to which the group is linked. The Z score for a bond length (or angle) is the number of standard deviations the observed value is removed from the expected value. A bond length (or angle) with $|Z| > 2$ is considered an outlier worth inspection. RMSZ is the root-mean-square of all Z scores of the bond lengths (or angles).

Mol	Type	Chain	Res	Link	Bond lengths			Bond angles		
					Counts	RMSZ	# Z > 2	Counts	RMSZ	# Z > 2
3	PYR	B	402	-	2,5,5	2.78	1 (50%)	2,6,6	1.62	1 (50%)
2	NAI	A	401	-	42,48,48	1.29	6 (14%)	47,73,73	2.02	9 (19%)
3	PYR	A	402	-	2,5,5	1.22	0	2,6,6	0.89	0
4	NAD	B	401	-	42,48,48	1.05	2 (4%)	50,73,73	1.65	10 (20%)

In the following table, the Chirals column lists the number of chiral outliers, the number of chiral centers analysed, the number of these observed in the model and the number defined in the Chemical Component Dictionary. Similar counts are reported in the Torsion and Rings columns. '-' means no outliers of that kind were identified.

Mol	Type	Chain	Res	Link	Chirals	Torsions	Rings
3	PYR	B	402	-	-	0/0/4/4	-
2	NAI	A	401	-	-	4/25/72/72	0/5/5/5
3	PYR	A	402	-	-	0/0/4/4	-
4	NAD	B	401	-	-	5/26/62/62	0/5/5/5

The worst 5 of 9 bond length outliers are listed below:

Mol	Chain	Res	Type	Atoms	Z	Observed(Å)	Ideal(Å)
3	B	402	PYR	O3-C2	3.93	1.35	1.22
2	A	401	NAI	C4N-C5N	-2.81	1.41	1.48
4	B	401	NAD	C4A-N3A	2.79	1.39	1.35
2	A	401	NAI	C6N-N1N	-2.78	1.30	1.37
2	A	401	NAI	O7N-C7N	2.67	1.30	1.24

The worst 5 of 20 bond angle outliers are listed below:

Mol	Chain	Res	Type	Atoms	Z	Observed(°)	Ideal(°)
2	A	401	NAI	N3A-C2A-N1A	-8.39	115.56	128.68
2	A	401	NAI	C2A-N1A-C6A	4.85	127.06	118.75
4	B	401	NAD	C2A-N1A-C6A	3.99	125.57	118.75
4	B	401	NAD	C1B-N9A-C4A	-3.93	119.74	126.64
2	A	401	NAI	C5A-C6A-N6A	3.68	125.94	120.35

There are no chirality outliers.

5 of 9 torsion outliers are listed below:

Mol	Chain	Res	Type	Atoms
4	B	401	NAD	O4D-C1D-N1N-C2N
4	B	401	NAD	O4D-C1D-N1N-C6N

Continued on next page...

Continued from previous page...

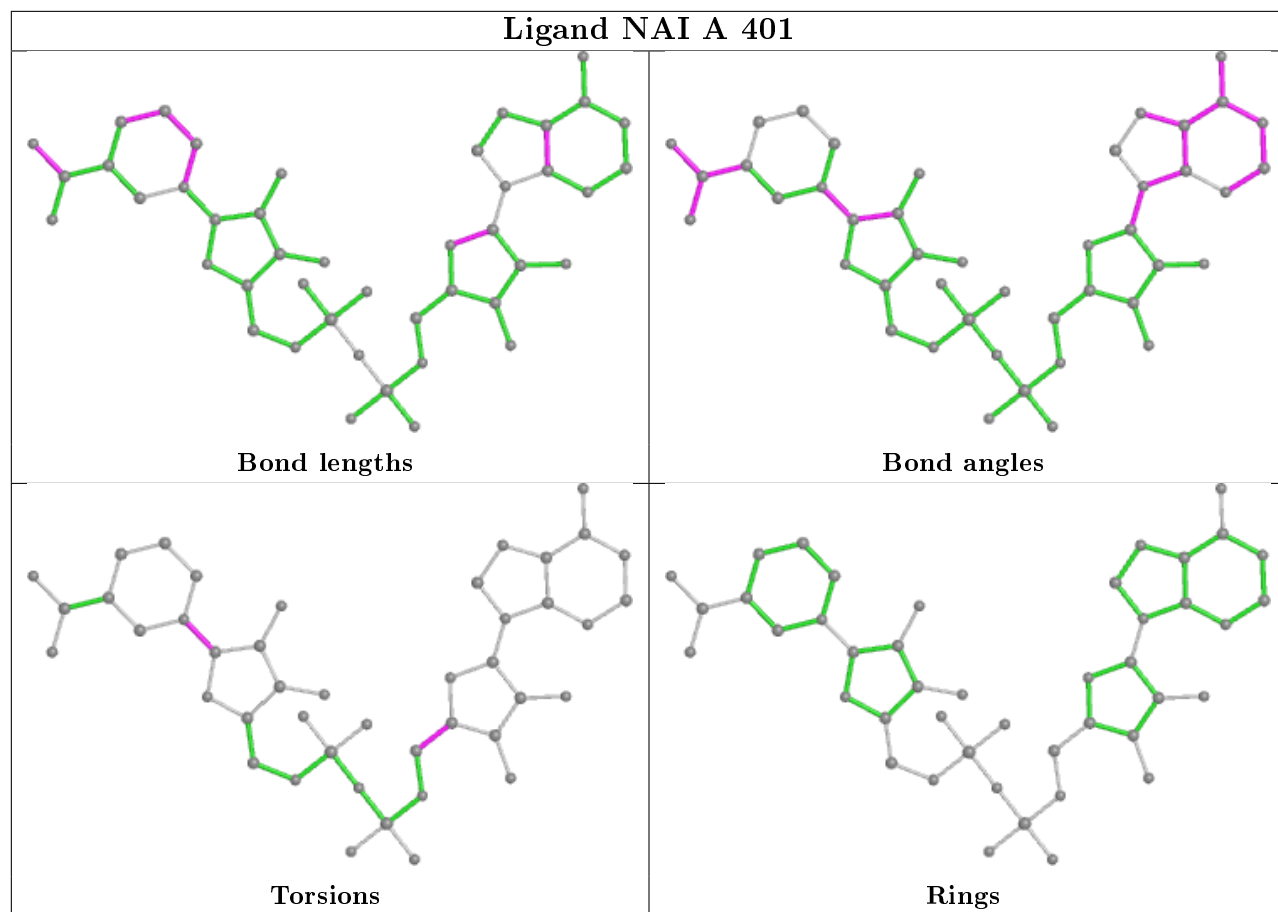
Mol	Chain	Res	Type	Atoms
4	B	401	NAD	C2D-C1D-N1N-C2N
2	A	401	NAI	C2D-C1D-N1N-C2N
2	A	401	NAI	O4D-C1D-N1N-C2N

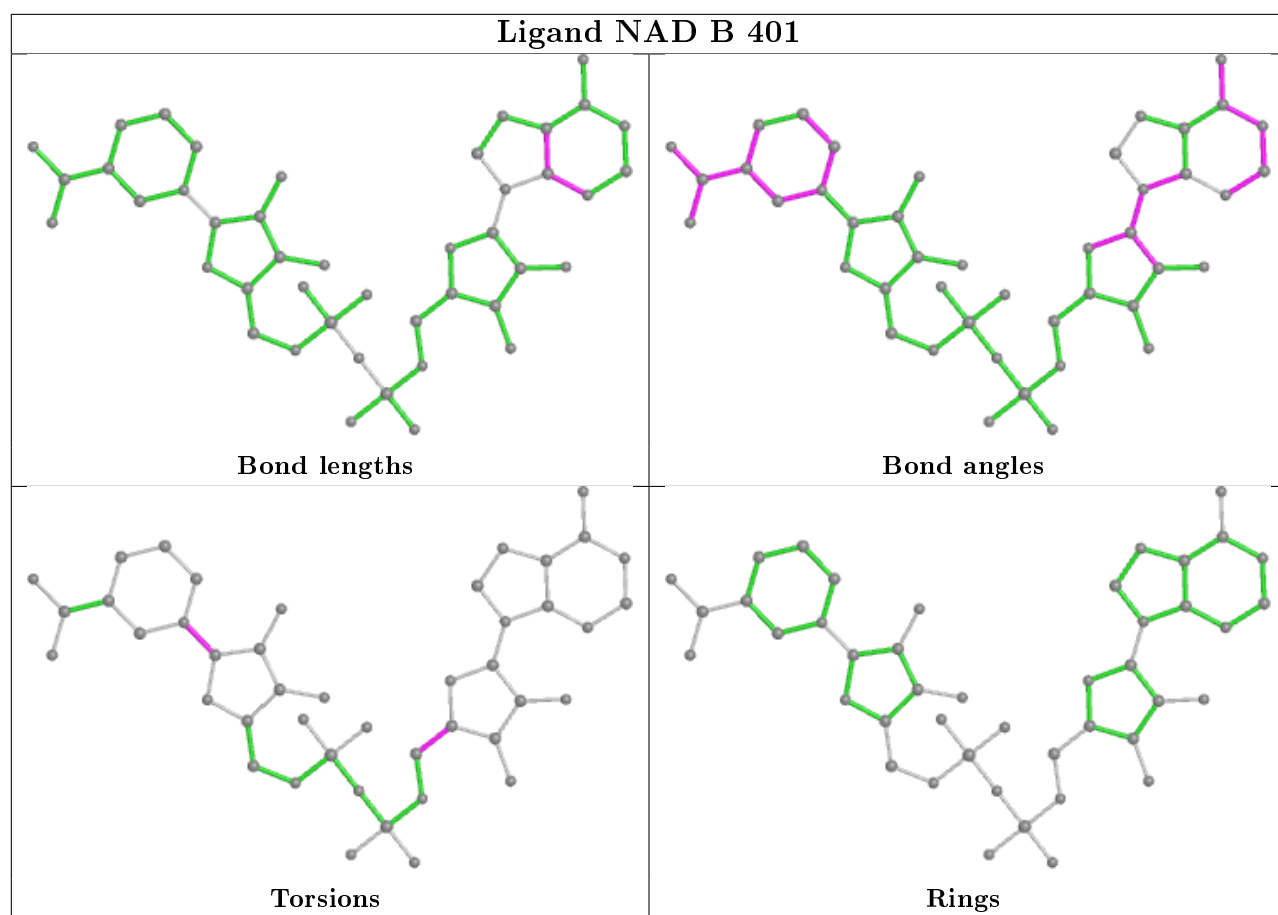
There are no ring outliers.

4 monomers are involved in 7 short contacts:

Mol	Chain	Res	Type	Clashes	Symm-Clashes
3	B	402	PYR	1	0
2	A	401	NAI	3	0
3	A	402	PYR	2	0
4	B	401	NAD	4	0

The following is a two-dimensional graphical depiction of Mogul quality analysis of bond lengths, bond angles, torsion angles, and ring geometry for all instances of the Ligand of Interest. In addition, ligands with molecular weight > 250 and outliers as shown on the validation Tables will also be included. For torsion angles, if less than 5% of the Mogul distribution of torsion angles is within 10 degrees of the torsion angle in question, then that torsion angle is considered an outlier. Any bond that is central to one or more torsion angles identified as an outlier by Mogul will be highlighted in the graph. For rings, the root-mean-square deviation (RMSD) between the ring in question and similar rings identified by Mogul is calculated over all ring torsion angles. If the average RMSD is greater than 60 degrees and the minimal RMSD between the ring in question and any Mogul-identified rings is also greater than 60 degrees, then that ring is considered an outlier. The outliers are highlighted in purple. The color gray indicates Mogul did not find sufficient equivalents in the CSD to analyse the geometry.





5.7 Other polymers [i](#)

There are no such residues in this entry.

5.8 Polymer linkage issues [i](#)

There are no chain breaks in this entry.

6 Fit of model and data [i](#)

6.1 Protein, DNA and RNA chains [i](#)

In the following table, the column labelled ‘#RSRZ> 2’ contains the number (and percentage) of RSRZ outliers, followed by percent RSRZ outliers for the chain as percentile scores relative to all X-ray entries and entries of similar resolution. The OWAB column contains the minimum, median, 95th percentile and maximum values of the occupancy-weighted average B-factor per residue. The column labelled ‘Q< 0.9’ lists the number of (and percentage) of residues with an average occupancy less than 0.9.

Mol	Chain	Analysed	<RSRZ>	#RSRZ>2	OWAB(Å ²)	Q<0.9
1	A	325/334 (97%)	-0.60	1 (0%) 94 95	8, 12, 24, 43	0
1	B	330/334 (98%)	0.15	34 (10%) 6 8	10, 16, 41, 53	0
All	All	655/668 (98%)	-0.22	35 (5%) 26 29	8, 14, 33, 53	0

The worst 5 of 35 RSRZ outliers are listed below:

Mol	Chain	Res	Type	RSRZ
1	B	334	HIS	9.5
1	B	327	LEU	8.8
1	B	91	GLY	7.7
1	B	105	PHE	7.6
1	B	325	LEU	7.3

6.2 Non-standard residues in protein, DNA, RNA chains [i](#)

There are no non-standard protein/DNA/RNA residues in this entry.

6.3 Carbohydrates [i](#)

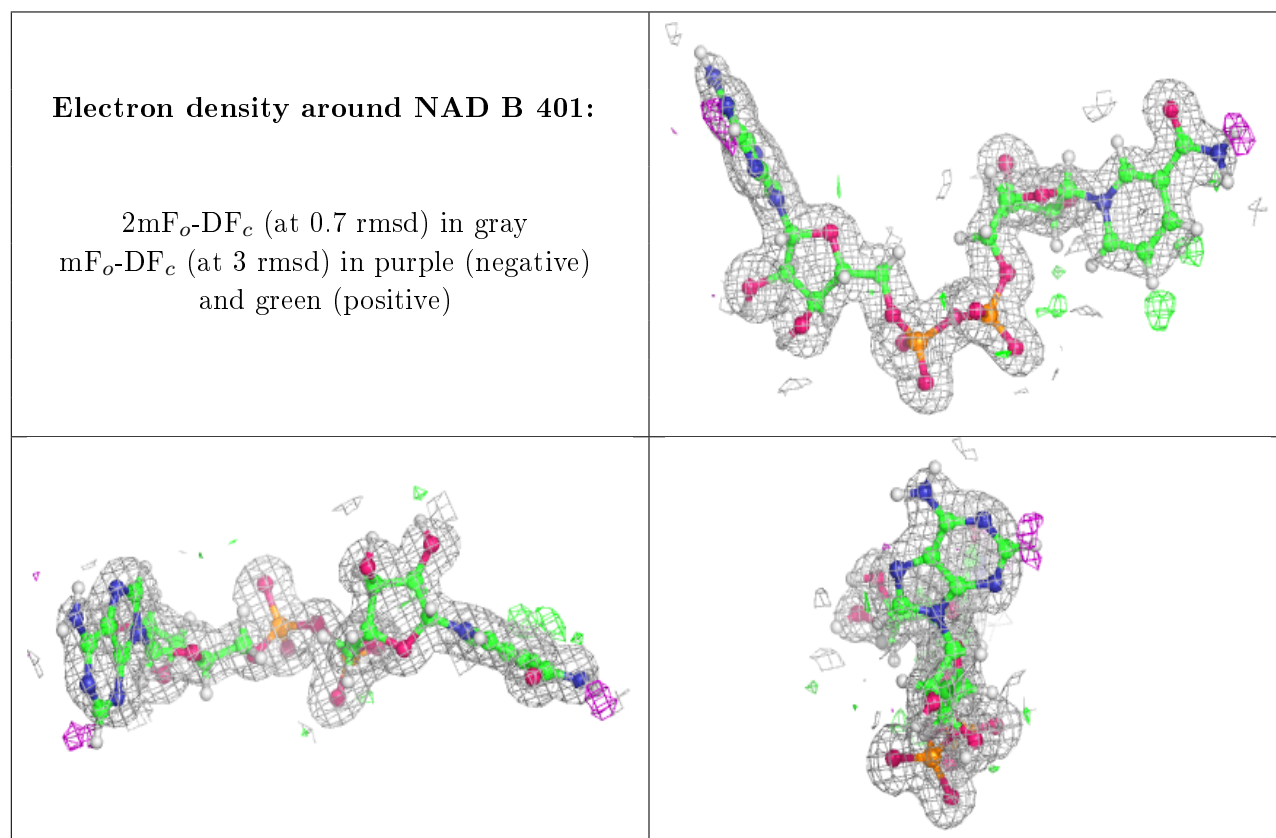
There are no carbohydrates in this entry.

6.4 Ligands [i](#)

In the following table, the Atoms column lists the number of modelled atoms in the group and the number defined in the chemical component dictionary. The B-factors column lists the minimum, median, 95th percentile and maximum values of B factors of atoms in the group. The column labelled ‘Q< 0.9’ lists the number of atoms with occupancy less than 0.9.

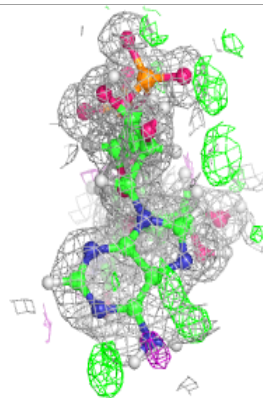
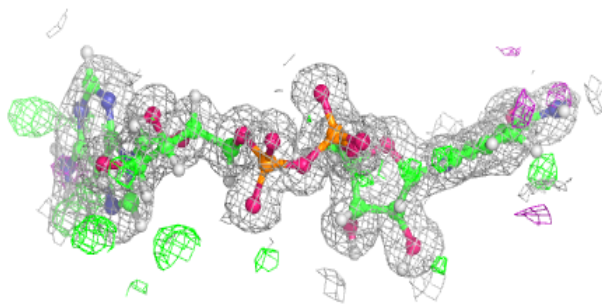
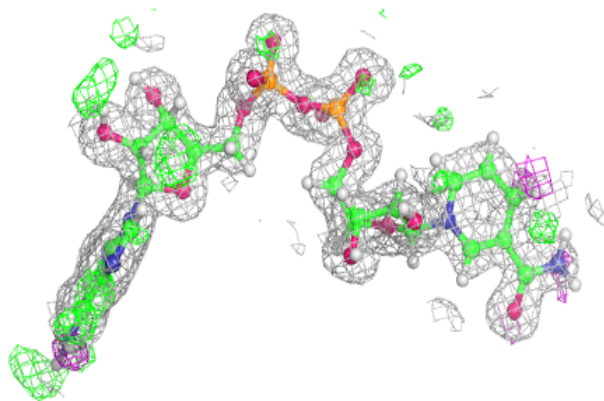
Mol	Type	Chain	Res	Atoms	RSCC	RSR	B-factors(\AA^2)	Q<0.9
3	PYR	B	402	6/6	0.93	0.14	19,26,37,37	0
3	PYR	A	402	6/6	0.98	0.10	10,16,28,28	0
4	NAD	B	401	44/44	0.98	0.08	17,24,31,36	0
2	NAI	A	401	44/44	0.99	0.05	9,14,29,37	0

The following is a graphical depiction of the model fit to experimental electron density of all instances of the Ligand of Interest. In addition, ligands with molecular weight > 250 and outliers as shown on the geometry validation Tables will also be included. Each fit is shown from different orientation to approximate a three-dimensional view.



Electron density around NAI A 401:

$2mF_o-DF_c$ (at 0.7 rmsd) in gray
 mF_o-DF_c (at 3 rmsd) in purple (negative)
and green (positive)



6.5 Other polymers [i](#)

There are no such residues in this entry.