



# Full wwPDB X-ray Structure Validation Report ⓘ

Sep 19, 2020 – 09:17 AM BST

PDB ID : 6PMV  
Title : Structure of rat neuronal nitric oxide synthase heme domain in complex with  
7-(4-(2-Aminoethyl)phenyl)-4-methylquinolin-2-amine  
Authors : Li, H.; Poulos, T.L.  
Deposited on : 2019-07-02  
Resolution : 1.80 Å(reported)

This is a Full wwPDB X-ray Structure Validation Report for a publicly released PDB entry.

We welcome your comments at [validation@mail.wwpdb.org](mailto:validation@mail.wwpdb.org)

A user guide is available at

<https://www.wwpdb.org/validation/2017/XrayValidationReportHelp>

with specific help available everywhere you see the ⓘ symbol.

---

The following versions of software and data (see [references ⓘ](#)) were used in the production of this report:

MolProbity : 4.02b-467  
Mogul : 1.8.5 (274361), CSD as541be (2020)  
Xtriage (Phenix) : 1.13  
EDS : 2.14.6  
buster-report : 1.1.7 (2018)  
Percentile statistics : 20191225.v01 (using entries in the PDB archive December 25th 2019)  
Refmac : 5.8.0158  
CCP4 : 7.0.044 (Gargrove)  
Ideal geometry (proteins) : Engh & Huber (2001)  
Ideal geometry (DNA, RNA) : Parkinson et al. (1996)  
Validation Pipeline (wwPDB-VP) : 2.14.6

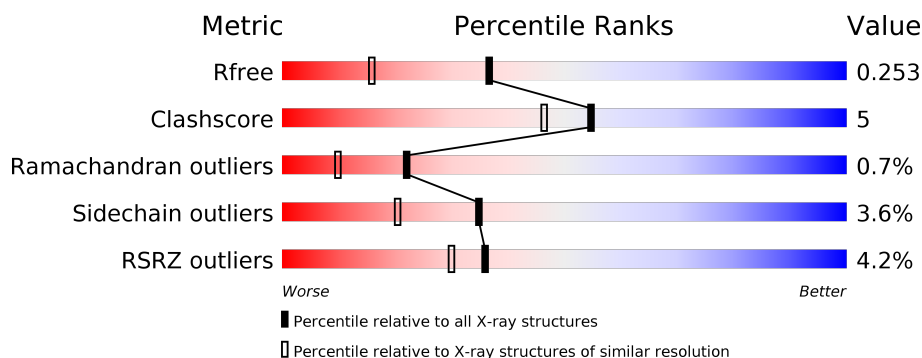
# 1 Overall quality at a glance

The following experimental techniques were used to determine the structure:

*X-RAY DIFFRACTION*

The reported resolution of this entry is 1.80 Å.

Percentile scores (ranging between 0-100) for global validation metrics of the entry are shown in the following graphic. The table shows the number of entries on which the scores are based.



Metric	Whole archive (#Entries)	Similar resolution (#Entries, resolution range(Å))
$R_{free}$	130704	5950 (1.80-1.80)
Clashscore	141614	6793 (1.80-1.80)
Ramachandran outliers	138981	6697 (1.80-1.80)
Sidechain outliers	138945	6696 (1.80-1.80)
RSRZ outliers	127900	5850 (1.80-1.80)

The table below summarises the geometric issues observed across the polymeric chains and their fit to the electron density. The red, orange, yellow and green segments on the lower bar indicate the fraction of residues that contain outliers for  $\geq 3$ , 2, 1 and 0 types of geometric quality criteria respectively. A grey segment represents the fraction of residues that are not modelled. The numeric value for each fraction is indicated below the corresponding segment, with a dot representing fractions  $\leq 5\%$ . The upper red bar (where present) indicates the fraction of residues that have poor fit to the electron density. The numeric value is given above the bar.

Mol	Chain	Length	Quality of chain
1	A	422	<div> <div>6%</div> <div> <div></div> <div>79%</div> <div>16%</div> <div>• •</div> </div> </div>
1	B	422	<div> <div>2%</div> <div> <div></div> <div>86%</div> <div>12%</div> <div>•</div> </div> </div>

## 2 Entry composition [i](#)

There are 7 unique types of molecules in this entry. The entry contains 7243 atoms, of which 0 are hydrogens and 0 are deuteriums.

In the tables below, the ZeroOcc column contains the number of atoms modelled with zero occupancy, the AltConf column contains the number of residues with at least one atom in alternate conformation and the Trace column contains the number of residues modelled with at most 2 atoms.

- Molecule 1 is a protein called Nitric oxide synthase, brain.

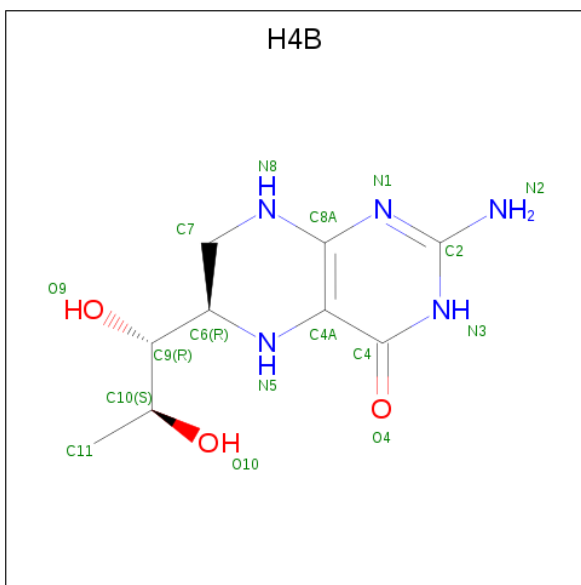
Mol	Chain	Residues	Atoms					ZeroOcc	AltConf	Trace
1	A	407	Total	C	N	O	S	0	3	0
			3322	2127	566	607	22			
1	B	411	Total	C	N	O	S	0	4	0
			3360	2150	574	614	22			

- Molecule 2 is PROTOPORPHYRIN IX CONTAINING FE (three-letter code: HEM) (formula:  $C_{34}H_{32}FeN_4O_4$ ).



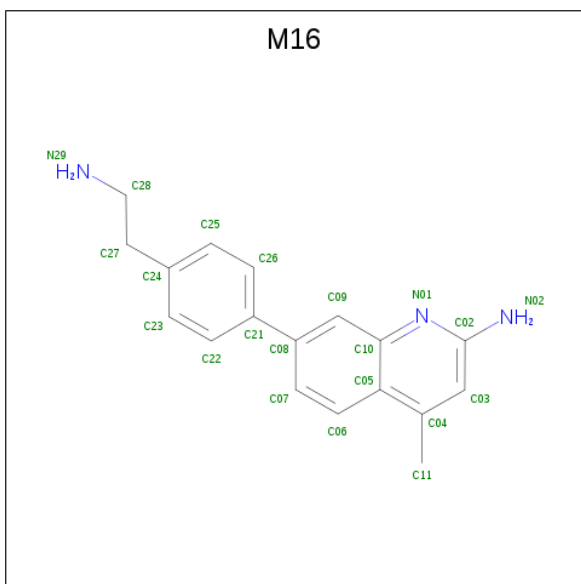
Mol	Chain	Residues	Atoms					ZeroOcc	AltConf
2	A	1	Total	C	Fe	N	O	0	0
			43	34	1	4	4		
2	B	1	Total	C	Fe	N	O	0	0
			43	34	1	4	4		

- Molecule 3 is 5,6,7,8-TETRAHYDROBIOPTERIN (three-letter code: H4B) (formula:  $C_9H_{15}N_5O_3$ ).



Mol	Chain	Residues	Atoms				ZeroOcc	AltConf
3	A	1	Total	C	N	O	0	0
			17	9	5	3		
3	B	1	Total	C	N	O	0	0
			17	9	5	3		

- Molecule 4 is 7-[4-(2-aminoethyl)phenyl]-4-methylquinolin-2-amine (three-letter code: M16) (formula: C<sub>18</sub>H<sub>19</sub>N<sub>3</sub>).



Mol	Chain	Residues	Atoms				ZeroOcc	AltConf
4	A	1	Total	C	N		0	0
			21	18	3			

*Continued on next page...*

Continued from previous page...

Mol	Chain	Residues	Atoms			ZeroOcc	AltConf
4	B	1	Total	C	N	0	0
			21	18	3		

- Molecule 5 is ACETATE ION (three-letter code: ACT) (formula:  $C_2H_3O_2$ ).



Mol	Chain	Residues	Atoms			ZeroOcc	AltConf
5	A	1	Total	C	O	0	0
			4	2	2		
5	B	1	Total	C	O	0	0
			4	2	2		

- Molecule 6 is ZINC ION (three-letter code: ZN) (formula:  $Zn$ ).

Mol	Chain	Residues	Atoms		ZeroOcc	AltConf
6	B	1	Total	Zn	0	0
			1	1		

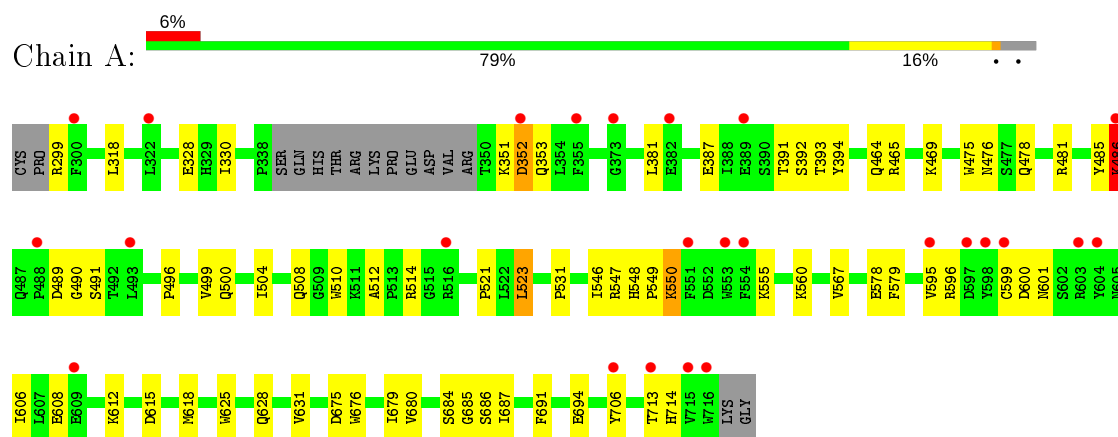
- Molecule 7 is water.

Mol	Chain	Residues	Atoms		ZeroOcc	AltConf
7	A	167	Total	O	0	0
			167	167		
7	B	223	Total	O	0	0
			223	223		

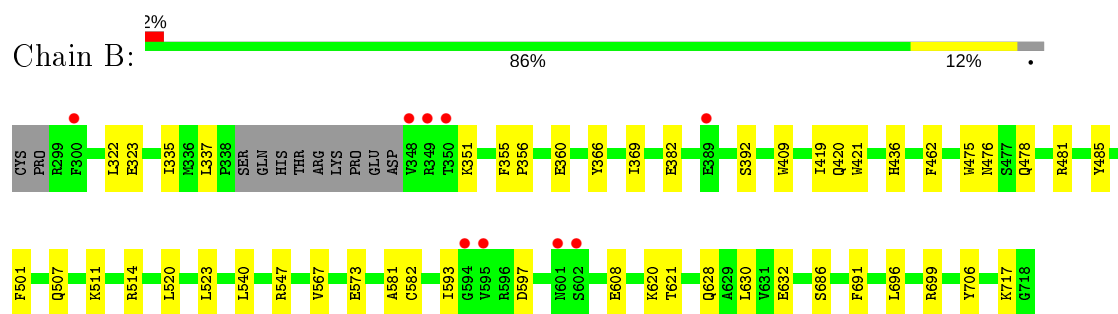
### 3 Residue-property plots [i](#)

These plots are drawn for all protein, RNA, DNA and oligosaccharide chains in the entry. The first graphic for a chain summarises the proportions of the various outlier classes displayed in the second graphic. The second graphic shows the sequence view annotated by issues in geometry and electron density. Residues are color-coded according to the number of geometric quality criteria for which they contain at least one outlier: green = 0, yellow = 1, orange = 2 and red = 3 or more. A red dot above a residue indicates a poor fit to the electron density ( $RSRZ > 2$ ). Stretches of 2 or more consecutive residues without any outlier are shown as a green connector. Residues present in the sample, but not in the model, are shown in grey.

- Molecule 1: Nitric oxide synthase, brain



- Molecule 1: Nitric oxide synthase, brain



## 4 Data and refinement statistics

Property	Value	Source
Space group	P 21 21 21	Depositor
Cell constants a, b, c, $\alpha$ , $\beta$ , $\gamma$	51.73Å 112.11Å 164.11Å 90.00° 90.00° 90.00°	Depositor
Resolution (Å)	82.06 – 1.80 82.06 – 1.80	Depositor EDS
% Data completeness (in resolution range)	96.6 (82.06-1.80) 97.5 (82.06-1.80)	Depositor EDS
$R_{merge}$	0.14	Depositor
$R_{sym}$	0.14	Depositor
$\langle I/\sigma(I) \rangle$ <sup>1</sup>	1.29 (at 1.80Å)	Xtriage
Refinement program	PHENIX (1.11.1-2575_1496: ???)	Depositor
R, $R_{free}$	0.209 , 0.254 0.209 , 0.253	Depositor DCC
$R_{free}$ test set	4316 reflections (4.95%)	wwPDB-VP
Wilson B-factor (Å <sup>2</sup> )	32.0	Xtriage
Anisotropy	0.892	Xtriage
Bulk solvent $k_{sol}$ (e/Å <sup>3</sup> ), $B_{sol}$ (Å <sup>2</sup> )	0.36 , 55.8	EDS
L-test for twinning <sup>2</sup>	$\langle  L  \rangle = 0.48$ , $\langle L^2 \rangle = 0.31$	Xtriage
Estimated twinning fraction	No twinning to report.	Xtriage
$F_o, F_c$ correlation	0.96	EDS
Total number of atoms	7243	wwPDB-VP
Average B, all atoms (Å <sup>2</sup> )	63.0	wwPDB-VP

Xtriage's analysis on translational NCS is as follows: *The largest off-origin peak in the Patterson function is 6.21% of the height of the origin peak. No significant pseudotranslation is detected.*

<sup>1</sup>Intensities estimated from amplitudes.

<sup>2</sup>Theoretical values of  $\langle |L| \rangle$ ,  $\langle L^2 \rangle$  for acentric reflections are 0.5, 0.333 respectively for untwinned datasets, and 0.375, 0.2 for perfectly twinned datasets.

## 5 Model quality

### 5.1 Standard geometry

Bond lengths and bond angles in the following residue types are not validated in this section: HEM, ZN, M16, H4B, ACT

The Z score for a bond length (or angle) is the number of standard deviations the observed value is removed from the expected value. A bond length (or angle) with  $|Z| > 5$  is considered an outlier worth inspection. RMSZ is the root-mean-square of all Z scores of the bond lengths (or angles).

Mol	Chain	Bond lengths		Bond angles	
		RMSZ	$\# Z  > 5$	RMSZ	$\# Z  > 5$
1	A	0.37	0/3421	0.52	0/4641
1	B	0.39	1/3465 (0.0%)	0.51	0/4697
All	All	0.38	1/6886 (0.0%)	0.51	0/9338

All (1) bond length outliers are listed below:

Mol	Chain	Res	Type	Atoms	Z	Observed(Å)	Ideal(Å)
1	B	582	CYS	CB-SG	5.47	1.91	1.82

There are no bond angle outliers.

There are no chirality outliers.

There are no planarity outliers.

### 5.2 Too-close contacts

In the following table, the Non-H and H(model) columns list the number of non-hydrogen atoms and hydrogen atoms in the chain respectively. The H(added) column lists the number of hydrogen atoms added and optimized by MolProbity. The Clashes column lists the number of clashes within the asymmetric unit, whereas Symm-Clashes lists symmetry related clashes.

Mol	Chain	Non-H	H(model)	H(added)	Clashes	Symm-Clashes
1	A	3322	0	3232	39	0
1	B	3360	0	3280	25	0
2	A	43	0	30	7	0
2	B	43	0	30	6	0
3	A	17	0	15	0	0
3	B	17	0	15	0	0
4	A	21	0	0	3	0
4	B	21	0	0	2	0

*Continued on next page...*

*Continued from previous page...*

Mol	Chain	Non-H	H(model)	H(added)	Clashes	Symm-Clashes
5	A	4	0	3	1	0
5	B	4	0	3	0	0
6	B	1	0	0	0	0
7	A	167	0	0	4	0
7	B	223	0	0	4	0
All	All	7243	0	6608	70	0

The all-atom clashscore is defined as the number of clashes found per 1000 atoms (including hydrogen atoms). The all-atom clashscore for this structure is 5.

All (70) close contacts within the same asymmetric unit are listed below, sorted by their clash magnitude.

Atom-1	Atom-2	Interatomic distance (Å)	Clash overlap (Å)
2:B:801:HEM:HBC2	2:B:801:HEM:HMC2	1.67	0.77
1:A:523:LEU:HD22	1:A:531:PRO:HB2	1.68	0.75
1:B:706:TYR:OH	2:B:801:HEM:O2D	2.06	0.71
1:B:478:GLN:HB2	1:B:481:ARG:HG3	1.74	0.69
2:A:801:HEM:HBC2	2:A:801:HEM:HMC2	1.74	0.69
2:B:801:HEM:O1A	7:B:901:HOH:O	2.11	0.68
2:B:801:HEM:HBB2	2:B:801:HEM:HHC	1.76	0.67
2:A:801:HEM:HHC	2:A:801:HEM:HBB2	1.82	0.61
1:A:478:GLN:HB2	1:A:481:ARG:HG3	1.82	0.61
1:A:706:TYR:OH	2:A:801:HEM:O2D	2.18	0.61
1:B:567:VAL:HG21	4:B:803:M16:C07	2.31	0.60
1:A:496:PRO:HA	1:A:499:VAL:HG23	1.85	0.59
1:A:714:HIS:ND1	7:A:902:HOH:O	2.32	0.57
2:B:801:HEM:HBD1	4:B:803:M16:C26	2.35	0.56
1:A:631:VAL:HG11	1:B:628:GLN:HG3	1.88	0.55
1:A:601:ASN:ND2	7:A:906:HOH:O	2.41	0.54
1:A:596:ARG:NH2	1:A:600:ASP:OD2	2.41	0.53
1:B:366:TYR:HA	1:B:369:ILE:HG12	1.90	0.52
1:A:351:LYS:HE2	1:A:392:SER:HB3	1.90	0.52
1:A:330:ILE:HD11	1:B:696:LEU:HD22	1.94	0.50
1:A:475:TRP:HB2	1:A:523:LEU:HB3	1.93	0.50
1:B:593:ILE:HA	1:B:597:ASP:HB2	1.95	0.49
1:A:500:GLN:O	1:A:504:ILE:HG13	2.13	0.49
1:B:322:LEU:HD13	1:B:699:ARG:HH21	1.77	0.48
1:A:567:VAL:HG21	4:A:803:M16:C07	2.43	0.48
1:A:694:GLU:HB3	1:B:335:ILE:HD13	1.96	0.48
1:A:606:ILE:HG12	7:A:1035:HOH:O	2.13	0.47
1:A:387:GLU:O	1:A:391:THR:OG1	2.27	0.47

*Continued on next page...*

*Continued from previous page...*

Atom-1	Atom-2	Interatomic distance (Å)	Clash overlap (Å)
1:B:323:GLU:O	1:B:699:ARG:HD3	2.14	0.46
1:A:595:VAL:O	1:A:599:CYS:HB2	2.15	0.46
1:A:299:ARG:HG3	1:A:318:LEU:HD21	1.98	0.46
1:A:510:TRP:CE2	1:A:521:PRO:HD3	2.51	0.46
1:A:464:GLN:HB3	1:A:579:PHE:CE2	2.52	0.45
1:B:507:GLN:NE2	7:B:913:HOH:O	2.49	0.45
1:B:409:TRP:CE3	1:B:421:TRP:HA	2.52	0.45
1:A:550:LYS:HA	1:A:550:LYS:HD2	1.53	0.44
1:A:675:ASP:O	1:A:679:ILE:HG12	2.17	0.44
1:B:419:ILE:HG23	1:B:420:GLN:HG2	2.00	0.44
2:A:801:HEM:CMC	2:A:801:HEM:HBC2	2.46	0.44
1:B:436:HIS:ND1	7:B:906:HOH:O	2.36	0.44
1:A:548:HIS:CG	1:A:549:PRO:HD2	2.53	0.43
1:A:676:TRP:CZ2	1:A:680:VAL:HG21	2.53	0.43
1:A:676:TRP:CE2	1:A:680:VAL:HG21	2.53	0.43
2:A:801:HEM:HBA2	4:A:803:M16:C26	2.49	0.43
1:B:501:PHE:HD2	1:B:520:LEU:HD13	1.84	0.43
1:A:485:TYR:CE2	1:A:512:ALA:HB1	2.54	0.43
1:B:628:GLN:NE2	7:B:907:HOH:O	2.39	0.43
1:A:504:ILE:O	1:A:508:GLN:HB2	2.18	0.43
2:B:801:HEM:CBB	2:B:801:HEM:HHC	2.47	0.42
1:A:687:ILE:HD13	1:B:630:LEU:HD22	2.02	0.42
2:A:801:HEM:HBD1	4:A:803:M16:C26	2.50	0.42
1:A:628:GLN:NE2	1:B:632:GLU:OE2	2.52	0.42
1:A:351:LYS:HE2	1:A:392:SER:CB	2.50	0.41
1:A:486:LYS:H	1:A:486:LYS:HG3	1.58	0.41
1:A:684:SER:HB3	1:A:687:ILE:HD11	2.02	0.41
2:A:801:HEM:HMB3	5:A:804:ACT:H2	2.02	0.41
1:B:462:PHE:HB2	1:B:581:ALA:HB3	2.02	0.41
1:A:686:SER:HA	1:A:691:PHE:CG	2.55	0.41
1:B:485:TYR:CE1	1:B:514:ARG:HA	2.55	0.41
1:A:465:ARG:NH1	1:A:578:GLU:OE1	2.50	0.41
1:A:685:GLY:O	1:A:691:PHE:HB2	2.21	0.41
1:B:475:TRP:HB2	1:B:523:LEU:HB3	2.03	0.41
1:B:501:PHE:CD2	1:B:520:LEU:HD13	2.55	0.41
1:A:393:THR:OG1	1:A:394:TYR:N	2.53	0.41
1:A:555:LYS:HG3	7:A:934:HOH:O	2.21	0.41
1:A:546:ILE:HG12	1:A:560:LYS:HA	2.03	0.41
1:B:686:SER:HA	1:B:691:PHE:CG	2.56	0.40
1:B:620:LYS:HD3	1:B:621:THR:N	2.36	0.40
1:A:618:MET:HA	1:A:625:TRP:CD1	2.55	0.40

*Continued on next page...*

*Continued from previous page...*

Atom-1	Atom-2	Interatomic distance (Å)	Clash overlap (Å)
1:B:355:PHE:N	1:B:356:PRO:HD2	2.36	0.40

There are no symmetry-related clashes.

## 5.3 Torsion angles [i](#)

### 5.3.1 Protein backbone [i](#)

In the following table, the Percentiles column shows the percent Ramachandran outliers of the chain as a percentile score with respect to all X-ray entries followed by that with respect to entries of similar resolution.

The Analysed column shows the number of residues for which the backbone conformation was analysed, and the total number of residues.

Mol	Chain	Analysed	Favoured	Allowed	Outliers	Percentiles	
1	A	405/422 (96%)	383 (95%)	16 (4%)	6 (2%)	10	2
1	B	411/422 (97%)	402 (98%)	9 (2%)	0	100	100
All	All	816/844 (97%)	785 (96%)	25 (3%)	6 (1%)	22	10

All (6) Ramachandran outliers are listed below:

Mol	Chain	Res	Type
1	A	489	ASP
1	A	514	ARG
1	A	486	LYS
1	A	490	GLY
1	A	491	SER
1	A	352	ASP

### 5.3.2 Protein sidechains [i](#)

In the following table, the Percentiles column shows the percent sidechain outliers of the chain as a percentile score with respect to all X-ray entries followed by that with respect to entries of similar resolution.

The Analysed column shows the number of residues for which the sidechain conformation was analysed, and the total number of residues.

Mol	Chain	Analysed	Rotameric	Outliers	Percentiles	
1	A	365/377 (97%)	351 (96%)	14 (4%)	33	18
1	B	370/377 (98%)	358 (97%)	12 (3%)	39	25
All	All	735/754 (98%)	709 (96%)	26 (4%)	35	21

All (26) residues with a non-rotameric sidechain are listed below:

Mol	Chain	Res	Type
1	A	328	GLU
1	A	352	ASP
1	A	353	GLN
1	A	381	LEU
1	A	469	LYS
1	A	476	ASN
1	A	486	LYS
1	A	523	LEU
1	A	547	ARG
1	A	550	LYS
1	A	608	GLU
1	A	612	LYS
1	A	615	ASP
1	A	713	THR
1	B	337	LEU
1	B	351	LYS
1	B	360	GLU
1	B	382	GLU
1	B	392	SER
1	B	476	ASN
1	B	511	LYS
1	B	540	LEU
1	B	547	ARG
1	B	573	GLU
1	B	608	GLU
1	B	717	LYS

Some sidechains can be flipped to improve hydrogen bonding and reduce clashes. There are no such sidechains identified.

### 5.3.3 RNA ⓘ

There are no RNA molecules in this entry.

## 5.4 Non-standard residues in protein, DNA, RNA chains [i](#)

There are no non-standard protein/DNA/RNA residues in this entry.

## 5.5 Carbohydrates [i](#)

There are no monosaccharides in this entry.

## 5.6 Ligand geometry [i](#)

Of 9 ligands modelled in this entry, 1 is monoatomic - leaving 8 for Mogul analysis.

In the following table, the Counts columns list the number of bonds (or angles) for which Mogul statistics could be retrieved, the number of bonds (or angles) that are observed in the model and the number of bonds (or angles) that are defined in the Chemical Component Dictionary. The Link column lists molecule types, if any, to which the group is linked. The Z score for a bond length (or angle) is the number of standard deviations the observed value is removed from the expected value. A bond length (or angle) with  $|Z| > 2$  is considered an outlier worth inspection. RMSZ is the root-mean-square of all Z scores of the bond lengths (or angles).

Mol	Type	Chain	Res	Link	Bond lengths			Bond angles		
					Counts	RMSZ	# $ Z  > 2$	Counts	RMSZ	# $ Z  > 2$
3	H4B	B	802	-	16,18,18	0.81	0	11,26,26	2.36	5 (45%)
2	HEM	A	801	1	27,50,50	1.84	6 (22%)	17,82,82	1.95	5 (29%)
4	M16	B	803	-	22,23,23	0.99	1 (4%)	30,32,32	1.40	3 (10%)
3	H4B	A	802	-	16,18,18	0.83	0	11,26,26	2.60	6 (54%)
5	ACT	B	804	-	1,3,3	1.21	0	0,3,3	0.00	-
5	ACT	A	804	-	1,3,3	1.47	0	0,3,3	0.00	-
4	M16	A	803	-	22,23,23	0.92	0	30,32,32	1.74	6 (20%)
2	HEM	B	801	1	27,50,50	1.98	6 (22%)	17,82,82	1.29	2 (11%)

In the following table, the Chirals column lists the number of chiral outliers, the number of chiral centers analysed, the number of these observed in the model and the number defined in the Chemical Component Dictionary. Similar counts are reported in the Torsion and Rings columns. '-' means no outliers of that kind were identified.

Mol	Type	Chain	Res	Link	Chirals	Torsions	Rings
3	H4B	B	802	-	-	2/8/17/17	0/2/2/2
2	HEM	A	801	1	-	0/6/54/54	-
4	M16	B	803	-	-	6/7/7/7	0/3/3/3
3	H4B	A	802	-	-	1/8/17/17	0/2/2/2
4	M16	A	803	-	-	6/7/7/7	0/3/3/3

*Continued on next page...*

*Continued from previous page...*

Mol	Type	Chain	Res	Link	Chirals	Torsions	Rings
2	HEM	B	801	1	-	0/6/54/54	-

All (13) bond length outliers are listed below:

Mol	Chain	Res	Type	Atoms	Z	Observed(Å)	Ideal(Å)
2	B	801	HEM	C3B-C2B	-4.95	1.33	1.40
2	A	801	HEM	C3B-C2B	-4.16	1.34	1.40
2	B	801	HEM	C3C-C2C	-4.11	1.34	1.40
2	A	801	HEM	C3B-CAB	3.78	1.55	1.47
2	B	801	HEM	C3B-CAB	3.50	1.55	1.47
2	B	801	HEM	C3C-CAC	3.48	1.54	1.47
2	A	801	HEM	C3C-CAC	3.23	1.54	1.47
2	A	801	HEM	C3C-C2C	-3.19	1.35	1.40
2	A	801	HEM	CMC-C2C	2.76	1.58	1.51
4	B	803	M16	C05-C10	-2.42	1.38	1.42
2	B	801	HEM	C1D-ND	2.05	1.40	1.36
2	B	801	HEM	C4B-NB	2.02	1.40	1.36
2	A	801	HEM	CMD-C2D	2.01	1.55	1.51

All (27) bond angle outliers are listed below:

Mol	Chain	Res	Type	Atoms	Z	Observed(°)	Ideal(°)
2	A	801	HEM	CBA-CAA-C2A	-5.11	103.06	112.49
3	A	802	H4B	C4-C4A-C8A	5.04	119.04	114.57
4	A	803	M16	C04-C05-C10	4.38	120.38	118.01
4	A	803	M16	C22-C21-C08	-4.27	113.97	121.36
3	B	802	H4B	C4-C4A-C8A	4.16	118.26	114.57
4	B	803	M16	C22-C21-C08	-3.93	114.55	121.36
3	A	802	H4B	N3-C2-N1	-3.47	119.97	125.42
4	A	803	M16	C05-C10-N01	-3.31	119.30	122.81
4	A	803	M16	C26-C21-C08	3.21	126.91	121.36
3	B	802	H4B	N3-C2-N1	-3.17	120.44	125.42
3	A	802	H4B	C4-N3-C2	3.17	120.97	115.93
2	A	801	HEM	CMC-C2C-C3C	3.01	130.31	124.68
3	B	802	H4B	C4-N3-C2	2.95	120.62	115.93
3	A	802	H4B	C2-N1-C8A	2.92	121.09	114.54
3	B	802	H4B	C4-C4A-N5	2.79	121.46	119.12
3	B	802	H4B	C2-N1-C8A	2.70	120.60	114.54
2	A	801	HEM	C4C-C3C-C2C	2.57	108.69	106.90
2	A	801	HEM	CAD-CBD-CGD	-2.55	108.39	112.67
4	B	803	M16	C26-C21-C08	2.48	125.66	121.36
3	A	802	H4B	C4-C4A-N5	2.45	121.18	119.12

*Continued on next page...*

*Continued from previous page...*

Mol	Chain	Res	Type	Atoms	Z	Observed(°)	Ideal(°)
4	B	803	M16	C05-C10-N01	-2.39	120.28	122.81
3	A	802	H4B	N2-C2-N3	2.30	120.83	117.25
2	A	801	HEM	C3C-C4C-NC	-2.25	106.70	110.94
4	A	803	M16	C08-C09-C10	-2.05	119.64	121.44
4	A	803	M16	C06-C05-C04	-2.03	119.77	123.66
2	B	801	HEM	CMA-C3A-C4A	-2.02	125.35	128.46
2	B	801	HEM	CAA-CBA-CGA	-2.01	109.29	112.67

There are no chirality outliers.

All (15) torsion outliers are listed below:

Mol	Chain	Res	Type	Atoms
4	A	803	M16	C09-C08-C21-C26
4	A	803	M16	C09-C08-C21-C22
4	A	803	M16	C07-C08-C21-C22
4	A	803	M16	C07-C08-C21-C26
4	B	803	M16	C07-C08-C21-C22
4	B	803	M16	C07-C08-C21-C26
4	B	803	M16	C09-C08-C21-C22
4	B	803	M16	C09-C08-C21-C26
4	A	803	M16	C25-C24-C27-C28
4	B	803	M16	C23-C24-C27-C28
4	B	803	M16	C25-C24-C27-C28
4	A	803	M16	C23-C24-C27-C28
3	B	802	H4B	C7-C6-C9-C10
3	A	802	H4B	C7-C6-C9-C10
3	B	802	H4B	N5-C6-C9-O9

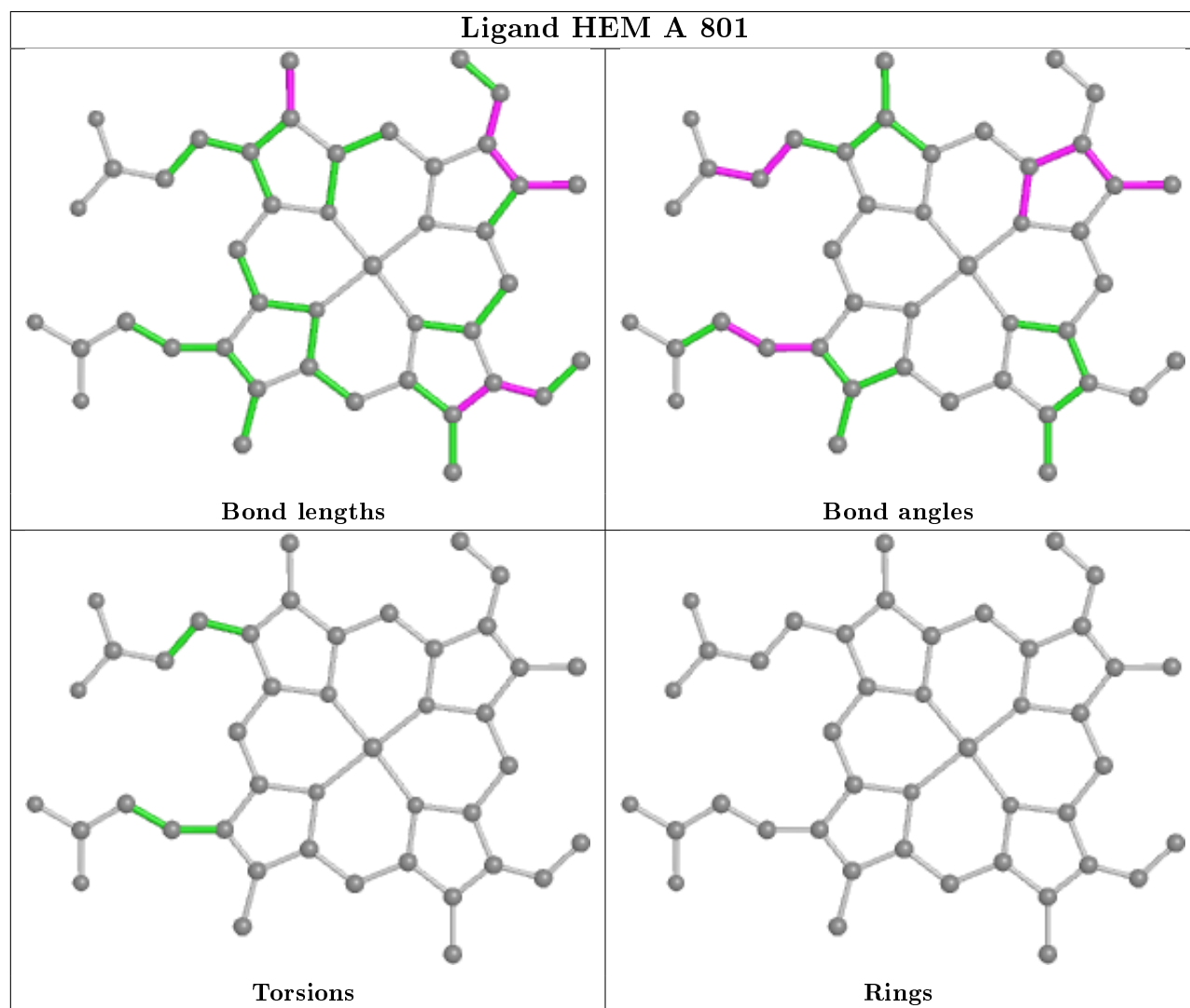
There are no ring outliers.

5 monomers are involved in 15 short contacts:

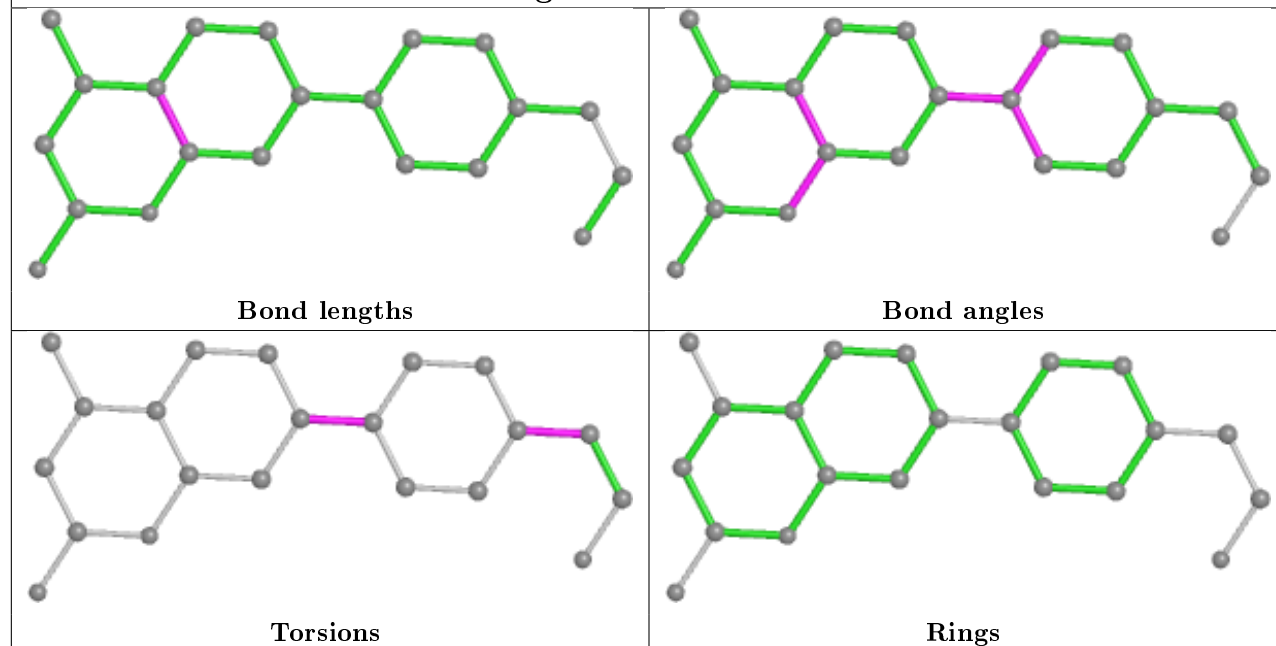
Mol	Chain	Res	Type	Clashes	Symm-Clashes
2	A	801	HEM	7	0
4	B	803	M16	2	0
5	A	804	ACT	1	0
4	A	803	M16	3	0
2	B	801	HEM	6	0

The following is a two-dimensional graphical depiction of Mogul quality analysis of bond lengths, bond angles, torsion angles, and ring geometry for all instances of the Ligand of Interest. In addition, ligands with molecular weight > 250 and outliers as shown on the validation Tables will

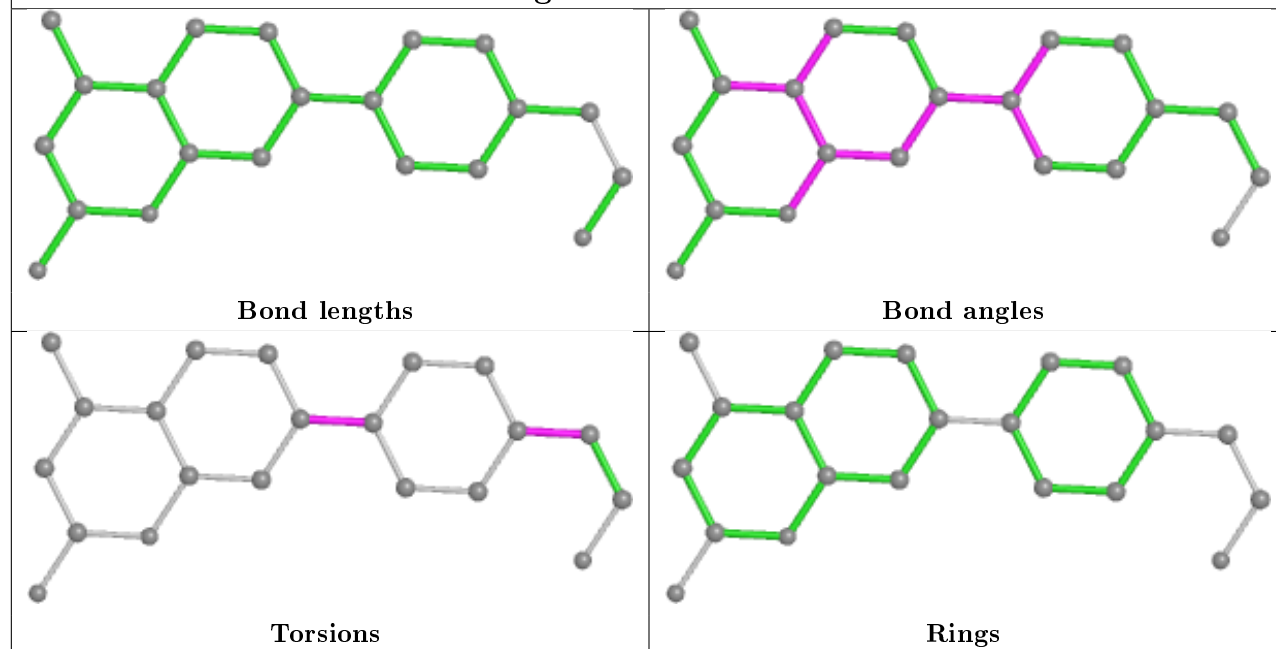
also be included. For torsion angles, if less than 5% of the Mogul distribution of torsion angles is within 10 degrees of the torsion angle in question, then that torsion angle is considered an outlier. Any bond that is central to one or more torsion angles identified as an outlier by Mogul will be highlighted in the graph. For rings, the root-mean-square deviation (RMSD) between the ring in question and similar rings identified by Mogul is calculated over all ring torsion angles. If the average RMSD is greater than 60 degrees and the minimal RMSD between the ring in question and any Mogul-identified rings is also greater than 60 degrees, then that ring is considered an outlier. The outliers are highlighted in purple. The color gray indicates Mogul did not find sufficient equivalents in the CSD to analyse the geometry.

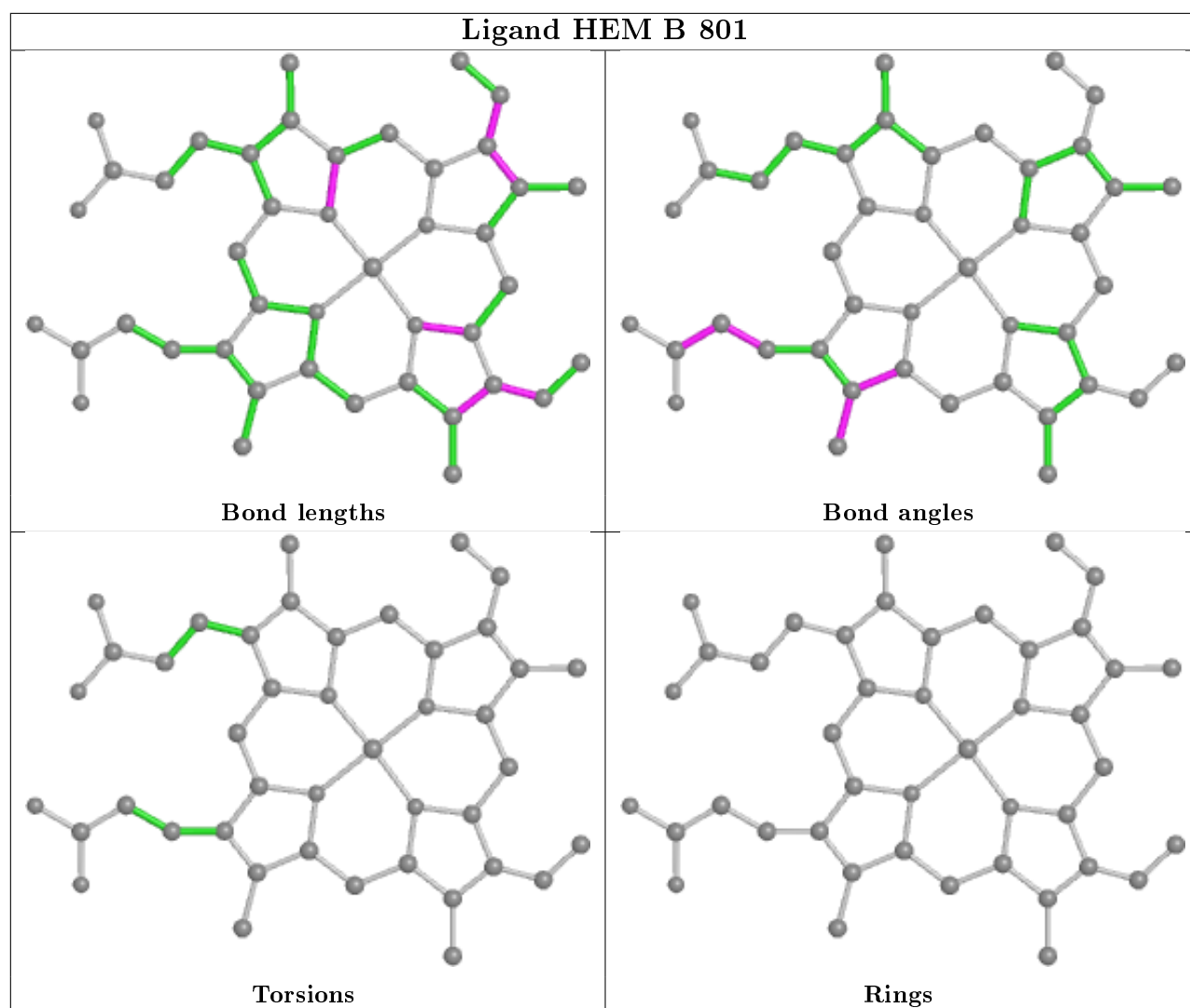


## Ligand M16 B 803



## Ligand M16 A 803





## 5.7 Other polymers [i](#)

There are no such residues in this entry.

## 5.8 Polymer linkage issues [i](#)

There are no chain breaks in this entry.

## 6 Fit of model and data

### 6.1 Protein, DNA and RNA chains

In the following table, the column labelled ‘#RSRZ> 2’ contains the number (and percentage) of RSRZ outliers, followed by percent RSRZ outliers for the chain as percentile scores relative to all X-ray entries and entries of similar resolution. The OWAB column contains the minimum, median, 95<sup>th</sup> percentile and maximum values of the occupancy-weighted average B-factor per residue. The column labelled ‘Q< 0.9’ lists the number of (and percentage) of residues with an average occupancy less than 0.9.

Mol	Chain	Analysed	<RSRZ>	#RSRZ>2	OWAB(Å <sup>2</sup> )	Q<0.9
1	A	407/422 (96%)	0.57	25 (6%) 21 16	29, 64, 120, 166	0
1	B	411/422 (97%)	0.27	9 (2%) 62 57	29, 54, 90, 117	0
All	All	818/844 (96%)	0.42	34 (4%) 36 30	29, 58, 110, 166	0

All (34) RSRZ outliers are listed below:

Mol	Chain	Res	Type	RSRZ
1	A	322	LEU	6.9
1	A	352	ASP	5.3
1	A	604	TYR	5.0
1	A	715	VAL	5.0
1	A	716	TRP	4.6
1	A	373	GLY	4.4
1	B	350	THR	4.3
1	B	348	VAL	4.2
1	A	554	PHE	4.0
1	A	599	CYS	3.9
1	A	488	PRO	3.6
1	A	706	TYR	3.3
1	B	594	GLY	3.2
1	A	551	PHE	3.2
1	A	603	ARG	3.1
1	A	598	TYR	3.0
1	A	595	VAL	2.9
1	A	355	PHE	2.8
1	A	609	GLU	2.8
1	B	601	ASN	2.7
1	A	553	TRP	2.7
1	A	597	ASP	2.6
1	B	595	VAL	2.5
1	A	300	PHE	2.5

*Continued on next page...*

*Continued from previous page...*

Mol	Chain	Res	Type	RSRZ
1	B	389	GLU	2.3
1	B	602[A]	SER	2.3
1	A	493	LEU	2.3
1	A	389	GLU	2.3
1	A	486	LYS	2.1
1	A	713	THR	2.1
1	B	349	ARG	2.1
1	A	516	ARG	2.1
1	B	300	PHE	2.1
1	A	382	GLU	2.0

## 6.2 Non-standard residues in protein, DNA, RNA chains [i](#)

There are no non-standard protein/DNA/RNA residues in this entry.

## 6.3 Carbohydrates [i](#)

There are no monosaccharides in this entry.

## 6.4 Ligands [i](#)

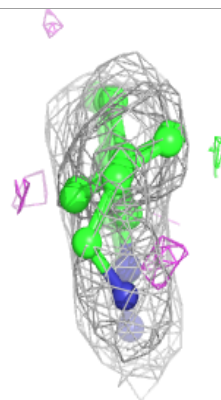
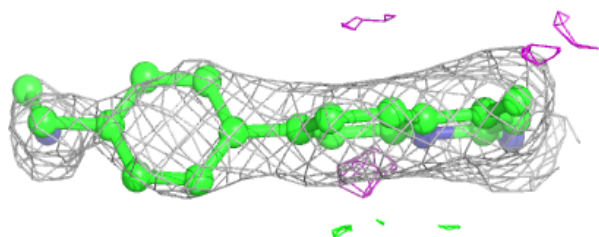
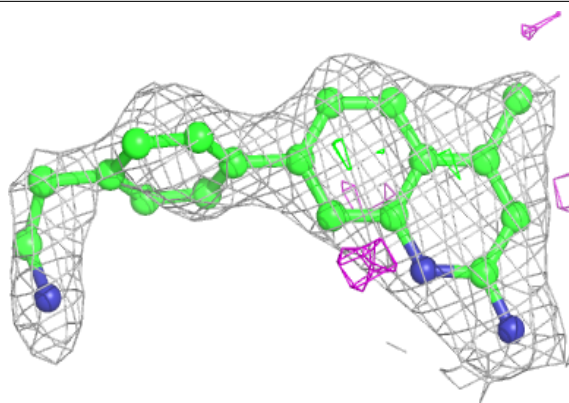
In the following table, the Atoms column lists the number of modelled atoms in the group and the number defined in the chemical component dictionary. The B-factors column lists the minimum, median, 95<sup>th</sup> percentile and maximum values of B factors of atoms in the group. The column labelled 'Q< 0.9' lists the number of atoms with occupancy less than 0.9.

Mol	Type	Chain	Res	Atoms	RSCC	RSR	B-factors(Å <sup>2</sup> )	Q<0.9
5	ACT	A	804	4/4	0.88	0.19	65,66,67,69	0
4	M16	B	803	21/21	0.89	0.19	38,55,87,89	0
3	H4B	B	802	17/17	0.89	0.14	35,49,57,60	0
3	H4B	A	802	17/17	0.90	0.17	39,51,60,68	0
4	M16	A	803	21/21	0.90	0.19	38,52,91,93	0
5	ACT	B	804	4/4	0.94	0.26	69,71,71,74	0
2	HEM	B	801	43/43	0.97	0.13	26,37,62,65	0
2	HEM	A	801	43/43	0.98	0.12	23,40,71,78	0
6	ZN	B	805	1/1	0.99	0.10	45,45,45,45	0

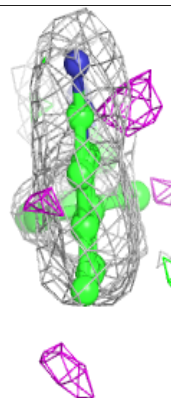
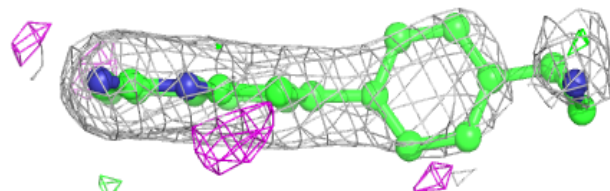
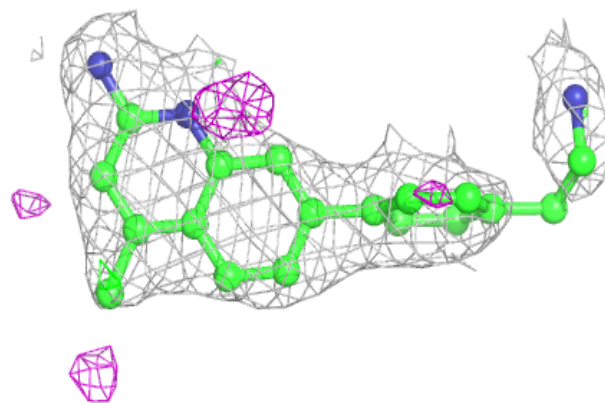
The following is a graphical depiction of the model fit to experimental electron density of all instances of the Ligand of Interest. In addition, ligands with molecular weight > 250 and outliers as shown on the geometry validation Tables will also be included. Each fit is shown from different orientation to approximate a three-dimensional view.

**Electron density around M16 B 803:**

$2mF_o-DF_c$  (at 0.7 rmsd) in gray  
 $mF_o-DF_c$  (at 3 rmsd) in purple (negative)  
and green (positive)

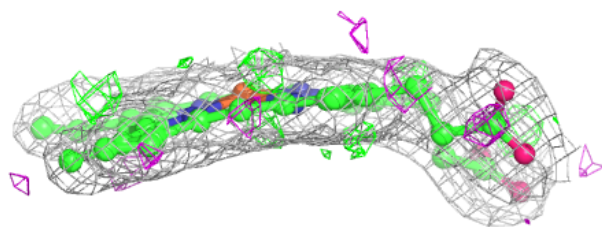
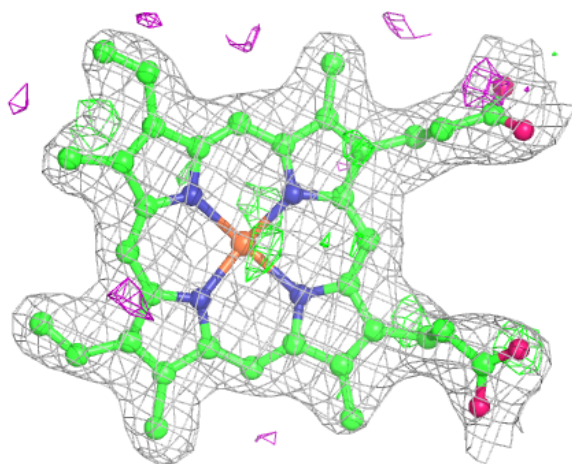
**Electron density around M16 A 803:**

$2mF_o-DF_c$  (at 0.7 rmsd) in gray  
 $mF_o-DF_c$  (at 3 rmsd) in purple (negative)  
and green (positive)



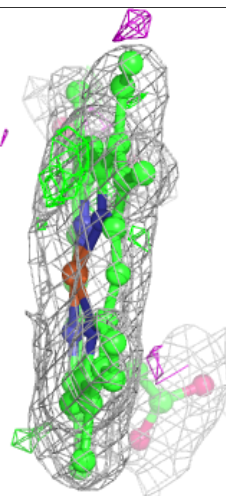
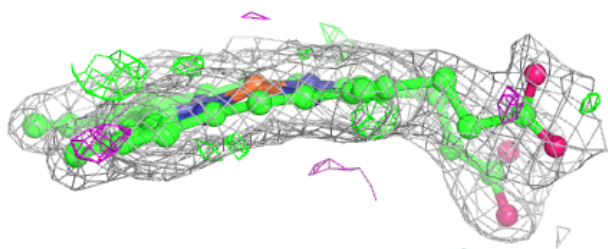
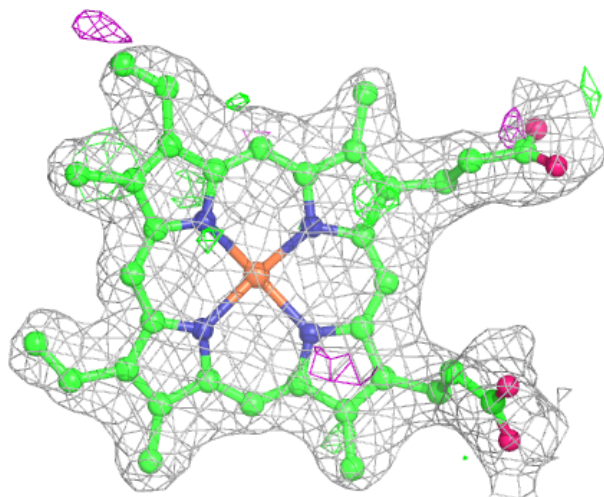
**Electron density around HEM B 801:**

$2mF_o-DF_c$  (at 0.7 rmsd) in gray  
 $mF_o-DF_c$  (at 3 rmsd) in purple (negative)  
and green (positive)



**Electron density around HEM A 801:**

$2mF_o-DF_c$  (at 0.7 rmsd) in gray  
 $mF_o-DF_c$  (at 3 rmsd) in purple (negative)  
and green (positive)



## 6.5 Other polymers ⓘ

There are no such residues in this entry.