



# Full wwPDB X-ray Structure Validation Report ⓘ

May 29, 2020 – 09:48 pm BST

PDB ID : 3PNF  
Title : Structure of rat neuronal nitric oxide synthase heme domain in complex with 6-(((3R,4R)-4-(2-((2,2-Difluoro-2-(2-chlorophenyl)ethyl)amino)ethoxy)pyrrolidin-3-yl)methyl)-4-methylpyridin-2-amine  
Authors : Li, H.; Delker, S.; Poulos, T.L.  
Deposited on : 2010-11-18  
Resolution : 1.94 Å(reported)

This is a Full wwPDB X-ray Structure Validation Report for a publicly released PDB entry.

We welcome your comments at [validation@mail.wwpdb.org](mailto:validation@mail.wwpdb.org)

A user guide is available at

<https://www.wwpdb.org/validation/2017/XrayValidationReportHelp>

with specific help available everywhere you see the ⓘ symbol.

---

The following versions of software and data (see [references ⓘ](#)) were used in the production of this report:

MolProbity : 4.02b-467  
Mogul : 1.8.5 (274361), CSD as541be (2020)  
Xtriage (Phenix) : 1.13  
EDS : 2.11  
buster-report : 1.1.7 (2018)  
Percentile statistics : 20191225.v01 (using entries in the PDB archive December 25th 2019)  
Refmac : 5.8.0158  
CCP4 : 7.0.044 (Gargrove)  
Ideal geometry (proteins) : Engh & Huber (2001)  
Ideal geometry (DNA, RNA) : Parkinson et al. (1996)  
Validation Pipeline (wwPDB-VP) : 2.11



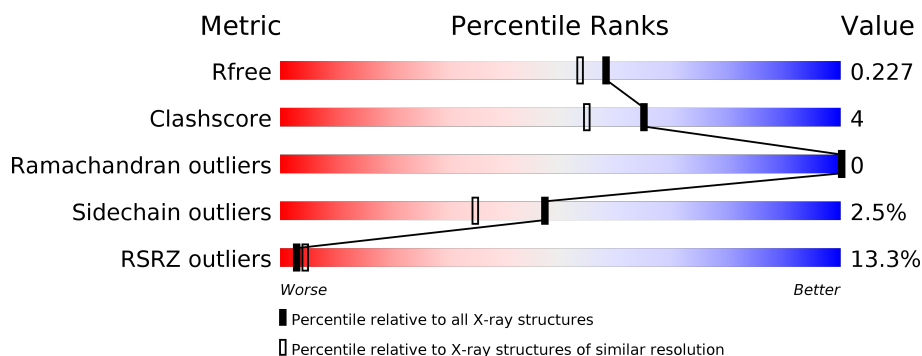
# 1 Overall quality at a glance

The following experimental techniques were used to determine the structure:

*X-RAY DIFFRACTION*

The reported resolution of this entry is 1.94 Å.

Percentile scores (ranging between 0-100) for global validation metrics of the entry are shown in the following graphic. The table shows the number of entries on which the scores are based.



Metric	Whole archive (#Entries)	Similar resolution (#Entries, resolution range(Å))
$R_{free}$	130704	4310 (1.96-1.92)
Clashscore	141614	1023 (1.94-1.94)
Ramachandran outliers	138981	1007 (1.94-1.94)
Sidechain outliers	138945	1007 (1.94-1.94)
RSRZ outliers	127900	4250 (1.96-1.92)

The table below summarises the geometric issues observed across the polymeric chains and their fit to the electron density. The red, orange, yellow and green segments on the lower bar indicate the fraction of residues that contain outliers for  $\geq 3$ , 2, 1 and 0 types of geometric quality criteria respectively. A grey segment represents the fraction of residues that are not modelled. The numeric value for each fraction is indicated below the corresponding segment, with a dot representing fractions  $\leq 5\%$ . The upper red bar (where present) indicates the fraction of residues that have poor fit to the electron density. The numeric value is given above the bar.

Mol	Chain	Length	Quality of chain
1	A	422	
1	B	422	



## 2 Entry composition [i](#)

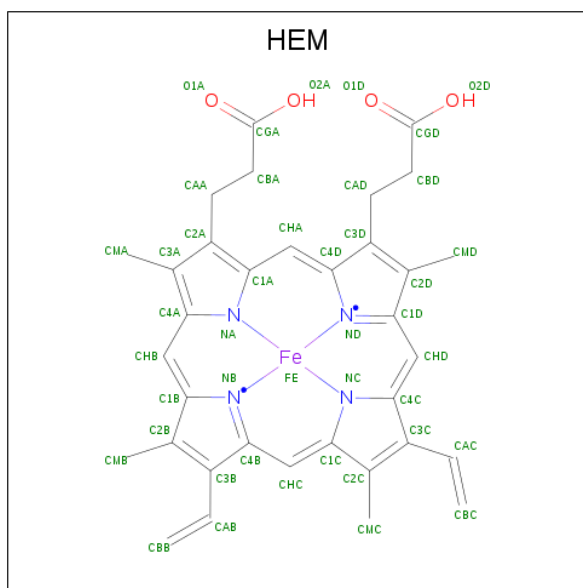
There are 7 unique types of molecules in this entry. The entry contains 7299 atoms, of which 0 are hydrogens and 0 are deuteriums.

In the tables below, the ZeroOcc column contains the number of atoms modelled with zero occupancy, the AltConf column contains the number of residues with at least one atom in alternate conformation and the Trace column contains the number of residues modelled with at most 2 atoms.

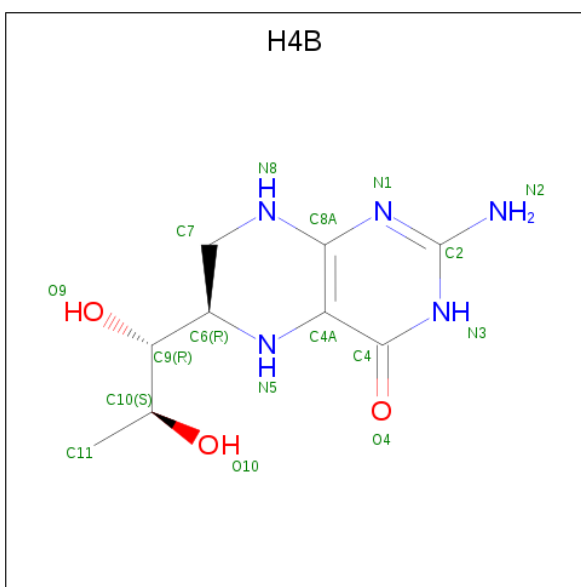
- Molecule 1 is a protein called Nitric oxide synthase, brain.

Mol	Chain	Residues	Atoms					ZeroOcc	AltConf	Trace
1	A	409	Total	C	N	O	S	0	5	0
			3354	2147	573	612	22			
1	B	411	Total	C	N	O	S	0	4	0
			3360	2150	574	614	22			

- Molecule 2 is PROTOPORPHYRIN IX CONTAINING FE (three-letter code: HEM) (formula:  $C_{34}H_{32}FeN_4O_4$ ).

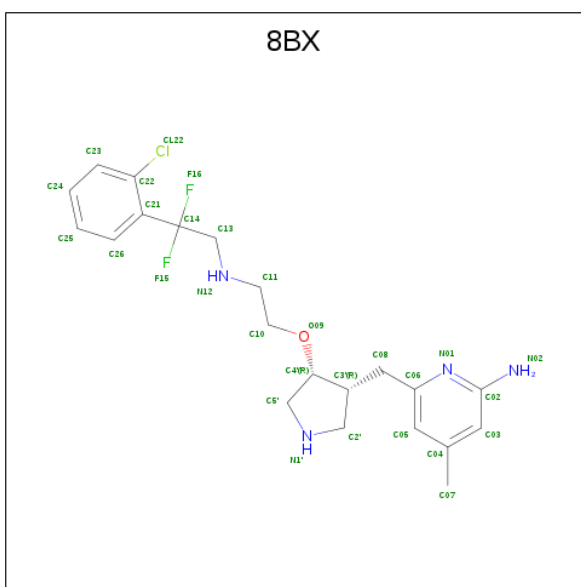






Mol	Chain	Residues	Atoms				ZeroOcc	AltConf
3	A	1	Total	C	N	O	0	0
			17	9	5	3		
3	B	1	Total	C	N	O	0	0
			17	9	5	3		

- Molecule 4 is 6-{[(3R,4R)-4-(2-{[2-(2-chlorophenyl)-2,2-difluoroethyl]amino}ethoxy)pyrrolidin-3-yl]methyl}-4-methylpyridin-2-amine (three-letter code: 8BX) (formula:  $C_{21}H_{27}ClF_2N_4O$ ).



Mol	Chain	Residues	Atoms						ZeroOcc	AltConf
4	A	1	Total	C	Cl	F	N	O	0	0
			29	21	1	2	4	1		

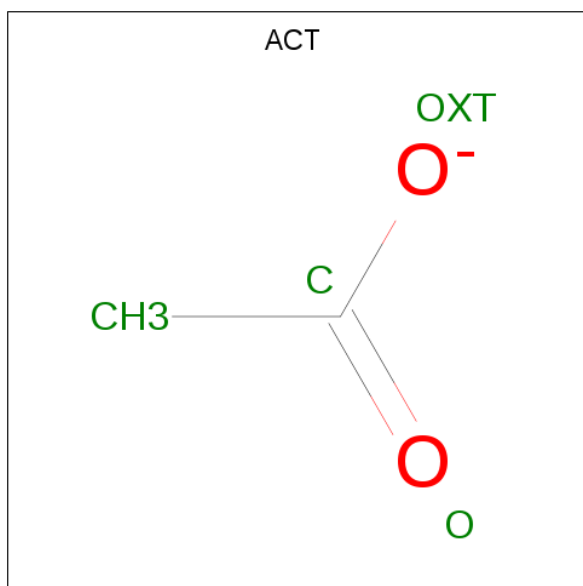
*Continued on next page...*



Continued from previous page...

Mol	Chain	Residues	Atoms						ZeroOcc	AltConf
4	B	1	Total	C	Cl	F	N	O	0	0
			29	21	1	2	4	1		

- Molecule 5 is ACETATE ION (three-letter code: ACT) (formula:  $C_2H_3O_2$ ).



Mol	Chain	Residues	Atoms			ZeroOcc	AltConf
5	A	1	Total	C	O	0	0
			4	2	2		
5	B	1	Total	C	O	0	0
			4	2	2		

- Molecule 6 is ZINC ION (three-letter code: ZN) (formula:  $Zn$ ).

Mol	Chain	Residues	Atoms		ZeroOcc	AltConf
6	A	1	Total	Zn	0	0
			1	1		

- Molecule 7 is water.

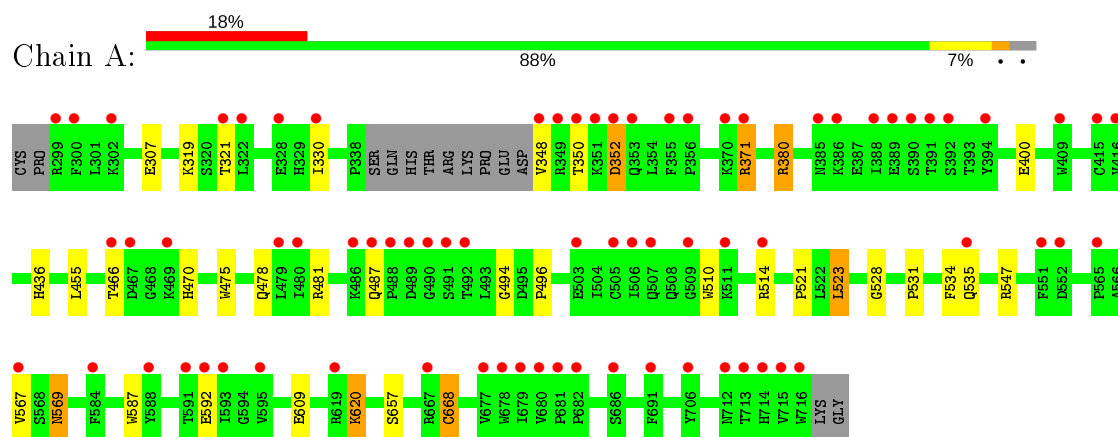
Mol	Chain	Residues	Atoms		ZeroOcc	AltConf
7	A	161	Total	O	0	0
			161	161		
7	B	237	Total	O	0	0
			237	237		



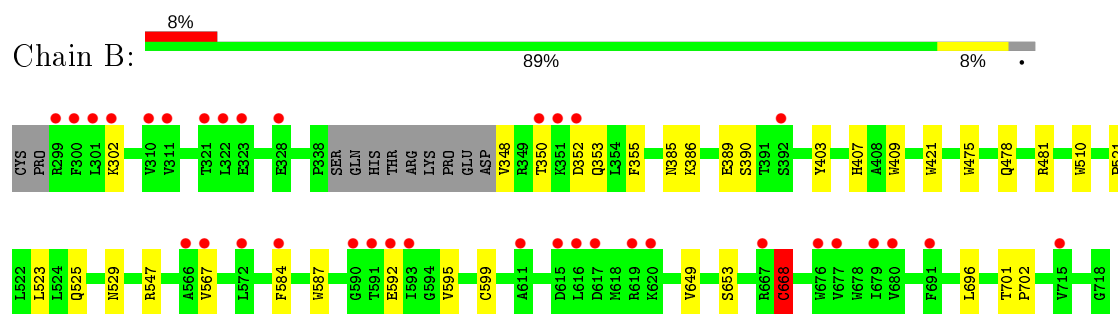
### 3 Residue-property plots [i](#)

These plots are drawn for all protein, RNA and DNA chains in the entry. The first graphic for a chain summarises the proportions of the various outlier classes displayed in the second graphic. The second graphic shows the sequence view annotated by issues in geometry and electron density. Residues are color-coded according to the number of geometric quality criteria for which they contain at least one outlier: green = 0, yellow = 1, orange = 2 and red = 3 or more. A red dot above a residue indicates a poor fit to the electron density ( $RSRZ > 2$ ). Stretches of 2 or more consecutive residues without any outlier are shown as a green connector. Residues present in the sample, but not in the model, are shown in grey.

- Molecule 1: Nitric oxide synthase, brain



- Molecule 1: Nitric oxide synthase, brain





## 4 Data and refinement statistics

Property	Value	Source
Space group	P 21 21 21	Depositor
Cell constants a, b, c, $\alpha$ , $\beta$ , $\gamma$	51.98Å 110.68Å 164.15Å 90.00° 90.00° 90.00°	Depositor
Resolution (Å)	39.08 – 1.94 37.89 – 1.94	Depositor EDS
% Data completeness (in resolution range)	99.0 (39.08-1.94) 99.0 (37.89-1.94)	Depositor EDS
$R_{merge}$	0.05	Depositor
$R_{sym}$	0.05	Depositor
$\langle I/\sigma(I) \rangle$ <sup>1</sup>	2.54 (at 1.94Å)	Xtriage
Refinement program	REFMAC	Depositor
R, $R_{free}$	0.178 , 0.215 0.194 , 0.227	Depositor DCC
$R_{free}$ test set	3497 reflections (4.97%)	wwPDB-VP
Wilson B-factor (Å <sup>2</sup> )	33.3	Xtriage
Anisotropy	0.320	Xtriage
Bulk solvent $k_{sol}$ (e/Å <sup>3</sup> ), $B_{sol}$ (Å <sup>2</sup> )	0.36 , 42.7	EDS
L-test for twinning <sup>2</sup>	$\langle  L  \rangle = 0.49$ , $\langle L^2 \rangle = 0.32$	Xtriage
Estimated twinning fraction	No twinning to report.	Xtriage
$F_o, F_c$ correlation	0.96	EDS
Total number of atoms	7299	wwPDB-VP
Average B, all atoms (Å <sup>2</sup> )	42.0	wwPDB-VP

Xtriage's analysis on translational NCS is as follows: *The largest off-origin peak in the Patterson function is 5.12% of the height of the origin peak. No significant pseudotranslation is detected.*

<sup>1</sup>Intensities estimated from amplitudes.

<sup>2</sup>Theoretical values of  $\langle |L| \rangle$ ,  $\langle L^2 \rangle$  for acentric reflections are 0.5, 0.333 respectively for untwinned datasets, and 0.375, 0.2 for perfectly twinned datasets.



## 5 Model quality [i](#)

### 5.1 Standard geometry [i](#)

Bond lengths and bond angles in the following residue types are not validated in this section: H4B, HEM, ZN, 8BX, ACT

The Z score for a bond length (or angle) is the number of standard deviations the observed value is removed from the expected value. A bond length (or angle) with  $|Z| > 5$  is considered an outlier worth inspection. RMSZ is the root-mean-square of all Z scores of the bond lengths (or angles).

Mol	Chain	Bond lengths		Bond angles	
		RMSZ	$\# Z  > 5$	RMSZ	$\# Z  > 5$
1	A	0.68	2/3462 (0.1%)	0.70	0/4696
1	B	0.72	0/3465	0.69	2/4697 (0.0%)
All	All	0.70	2/6927 (0.0%)	0.70	2/9393 (0.0%)

All (2) bond length outliers are listed below:

Mol	Chain	Res	Type	Atoms	Z	Observed(Å)	Ideal(Å)
1	A	668[A]	CYS	CB-SG	5.24	1.91	1.82
1	A	668[B]	CYS	CB-SG	5.24	1.91	1.82

All (2) bond angle outliers are listed below:

Mol	Chain	Res	Type	Atoms	Z	Observed(°)	Ideal(°)
1	B	668[A]	CYS	CA-CB-SG	5.61	124.11	114.00
1	B	668[B]	CYS	CA-CB-SG	5.61	124.11	114.00

There are no chirality outliers.

There are no planarity outliers.

### 5.2 Too-close contacts [i](#)

In the following table, the Non-H and H(model) columns list the number of non-hydrogen atoms and hydrogen atoms in the chain respectively. The H(added) column lists the number of hydrogen atoms added and optimized by MolProbity. The Clashes column lists the number of clashes within the asymmetric unit, whereas Symm-Clashes lists symmetry related clashes.

Mol	Chain	Non-H	H(model)	H(added)	Clashes	Symm-Clashes
1	A	3354	0	3273	31	0
1	B	3360	0	3280	21	0

*Continued on next page...*



*Continued from previous page...*

Mol	Chain	Non-H	H(model)	H(added)	Clashes	Symm-Clashes
2	A	43	0	30	1	0
2	B	43	0	30	3	0
3	A	17	0	15	0	0
3	B	17	0	15	0	0
4	A	29	0	27	8	0
4	B	29	0	27	6	0
5	A	4	0	3	0	0
5	B	4	0	3	1	0
6	A	1	0	0	0	0
7	A	161	0	0	2	0
7	B	237	0	0	2	0
All	All	7299	0	6703	56	0

The all-atom clashscore is defined as the number of clashes found per 1000 atoms (including hydrogen atoms). The all-atom clashscore for this structure is 4.

All (56) close contacts within the same asymmetric unit are listed below, sorted by their clash magnitude.

Atom-1	Atom-2	Interatomic distance (Å)	Clash overlap (Å)
1:A:592[A]:GLU:OE1	4:A:800:8BX:H26	1.54	1.08
1:A:587:TRP:O	4:A:800:8BX:H24	1.63	0.98
1:A:592[A]:GLU:OE2	4:A:800:8BX:H25	1.68	0.93
1:B:592[A]:GLU:OE1	4:B:800:8BX:H26	1.68	0.93
1:B:587:TRP:O	4:B:800:8BX:H24	1.71	0.89
1:A:371:ARG:CG	1:A:371:ARG:HH21	1.94	0.81
1:B:592[A]:GLU:OE2	4:B:800:8BX:H25	1.83	0.79
1:A:521:PRO:HA	1:A:535[A]:GLN:HG3	1.68	0.74
1:A:523:LEU:HD22	1:A:531:PRO:HB2	1.73	0.71
1:A:307:GLU:HG3	7:B:36:HOH:O	1.91	0.69
1:A:371:ARG:HG2	1:A:371:ARG:NH2	2.09	0.68
2:A:750:HEM:HMC2	2:A:750:HEM:HBC2	1.75	0.67
1:A:371:ARG:HH21	1:A:371:ARG:HG2	1.61	0.65
1:B:668[B]:CYS:SG	7:B:214:HOH:O	2.37	0.65
1:A:380:ARG:HD3	1:A:400:GLU:OE1	1.97	0.64
2:B:750:HEM:HHC	2:B:750:HEM:HBB2	1.81	0.62
1:A:478:GLN:HB2	1:A:481:ARG:HG3	1.81	0.61
1:A:371:ARG:CG	1:A:371:ARG:NH2	2.58	0.60
1:B:478:GLN:HB2	1:B:481:ARG:HG3	1.84	0.60
1:A:587:TRP:O	4:A:800:8BX:C24	2.46	0.57
1:B:355:PHE:CE1	1:B:385:ASN:HB2	2.41	0.55
1:B:567:VAL:HG23	4:B:800:8BX:F15	1.98	0.54

*Continued on next page...*



*Continued from previous page...*

Atom-1	Atom-2	Interatomic distance (Å)	Clash overlap (Å)
4:A:800:8BX:F15	4:A:800:8BX:CL22	2.52	0.54
1:A:371:ARG:HG3	1:A:371:ARG:HH21	1.71	0.54
1:A:592[A]:GLU:OE2	4:A:800:8BX:C25	2.50	0.52
1:A:330:ILE:HD11	1:B:696:LEU:HB3	1.92	0.50
1:A:348:VAL:HG21	1:A:466:THR:O	2.12	0.50
1:A:521:PRO:CA	1:A:535[A]:GLN:HG3	2.40	0.48
4:B:800:8BX:F15	4:B:800:8BX:CL22	2.60	0.47
1:B:587:TRP:O	4:B:800:8BX:C24	2.53	0.47
1:A:592[A]:GLU:OE1	4:A:800:8BX:C26	2.45	0.46
1:A:436:HIS:CD2	1:A:534:PHE:HE2	2.34	0.46
1:B:649:VAL:HG22	1:B:653[A]:SER:HB3	1.98	0.46
1:A:475:TRP:HB2	1:A:523:LEU:HB3	1.98	0.45
1:A:470:HIS:HA	1:A:528:GLY:HA3	1.99	0.45
1:A:620:LYS:NZ	7:A:145:HOH:O	2.42	0.45
1:A:494:GLY:O	1:A:496:PRO:HD3	2.17	0.45
1:B:350:THR:HG22	1:B:352:ASP:H	1.82	0.44
1:A:510:TRP:CE2	1:A:521:PRO:HD3	2.53	0.44
1:A:609:GLU:HG3	7:A:8:HOH:O	2.17	0.43
1:B:595:VAL:O	1:B:599:CYS:HB2	2.18	0.43
1:A:352:ASP:N	1:A:352:ASP:OD1	2.50	0.43
1:B:403:TYR:CE1	1:B:407:HIS:CE1	3.06	0.43
1:B:701:THR:HA	1:B:702:PRO:C	2.39	0.42
1:B:302:LYS:HE3	1:B:302:LYS:HB2	1.79	0.42
2:B:750:HEM:HMB2	5:B:860:ACT:H2	2.02	0.42
1:B:409:TRP:CE3	1:B:421:TRP:HA	2.55	0.41
1:A:487:GLN:HE21	1:A:514:ARG:HH11	1.68	0.41
1:A:455:LEU:HD12	1:A:587:TRP:HB3	2.03	0.41
1:A:569:ASN:H	1:A:569:ASN:HD22	1.67	0.41
1:B:525:GLN:HG3	1:B:529:ASN:O	2.20	0.41
1:B:475:TRP:HB2	1:B:523:LEU:HB3	2.01	0.41
1:B:510:TRP:CE2	1:B:521:PRO:HD3	2.56	0.40
1:B:584:PHE:CD1	2:B:750:HEM:CAC	3.04	0.40
1:A:567:VAL:HG23	4:A:800:8BX:F15	2.11	0.40
1:B:386:LYS:HE3	1:B:386:LYS:HB3	1.90	0.40

There are no symmetry-related clashes.



## 5.3 Torsion angles

### 5.3.1 Protein backbone

In the following table, the Percentiles column shows the percent Ramachandran outliers of the chain as a percentile score with respect to all X-ray entries followed by that with respect to entries of similar resolution.

The Analysed column shows the number of residues for which the backbone conformation was analysed, and the total number of residues.

Mol	Chain	Analysed	Favoured	Allowed	Outliers	Percentiles	
1	A	410/422 (97%)	404 (98%)	6 (2%)	0	100	100
1	B	411/422 (97%)	406 (99%)	5 (1%)	0	100	100
All	All	821/844 (97%)	810 (99%)	11 (1%)	0	100	100

There are no Ramachandran outliers to report.

### 5.3.2 Protein sidechains

In the following table, the Percentiles column shows the percent sidechain outliers of the chain as a percentile score with respect to all X-ray entries followed by that with respect to entries of similar resolution.

The Analysed column shows the number of residues for which the sidechain conformation was analysed, and the total number of residues.

Mol	Chain	Analysed	Rotameric	Outliers	Percentiles	
1	A	370/377 (98%)	356 (96%)	14 (4%)	33	18
1	B	370/377 (98%)	363 (98%)	7 (2%)	57	45
All	All	740/754 (98%)	719 (97%)	21 (3%)	47	29

All (21) residues with a non-rotameric sidechain are listed below:

Mol	Chain	Res	Type
1	A	319	LYS
1	A	321	THR
1	A	350	THR
1	A	352	ASP
1	A	371	ARG
1	A	380	ARG
1	A	523	LEU
1	A	547	ARG

*Continued on next page...*



*Continued from previous page...*

Mol	Chain	Res	Type
1	A	569	ASN
1	A	620	LYS
1	A	657[A]	SER
1	A	657[B]	SER
1	A	668[A]	CYS
1	A	668[B]	CYS
1	B	348	VAL
1	B	353	GLN
1	B	389	GLU
1	B	390	SER
1	B	547	ARG
1	B	668[A]	CYS
1	B	668[B]	CYS

Some sidechains can be flipped to improve hydrogen bonding and reduce clashes. All (13) such sidechains are listed below:

Mol	Chain	Res	Type
1	A	425	GLN
1	A	454	ASN
1	A	487	GLN
1	A	527	ASN
1	A	569	ASN
1	A	605	ASN
1	A	697	ASN
1	B	440	ASN
1	B	454	ASN
1	B	507	GLN
1	B	601	ASN
1	B	605	ASN
1	B	697	ASN

### 5.3.3 RNA ⓘ

There are no RNA molecules in this entry.

## 5.4 Non-standard residues in protein, DNA, RNA chains ⓘ

There are no non-standard protein/DNA/RNA residues in this entry.



## 5.5 Carbohydrates ⓘ

There are no carbohydrates in this entry.

## 5.6 Ligand geometry ⓘ

Of 9 ligands modelled in this entry, 1 is monoatomic - leaving 8 for Mogul analysis.

In the following table, the Counts columns list the number of bonds (or angles) for which Mogul statistics could be retrieved, the number of bonds (or angles) that are observed in the model and the number of bonds (or angles) that are defined in the Chemical Component Dictionary. The Link column lists molecule types, if any, to which the group is linked. The Z score for a bond length (or angle) is the number of standard deviations the observed value is removed from the expected value. A bond length (or angle) with  $|Z| > 2$  is considered an outlier worth inspection. RMSZ is the root-mean-square of all Z scores of the bond lengths (or angles).

Mol	Type	Chain	Res	Link	Bond lengths			Bond angles		
					Counts	RMSZ	# Z  > 2	Counts	RMSZ	# Z  > 2
4	8BX	B	800	-	29,31,31	1.00	2 (6%)	32,43,43	2.35	11 (34%)
2	HEM	A	750	1	27,50,50	2.11	6 (22%)	17,82,82	2.51	4 (23%)
3	H4B	A	760	-	16,18,18	0.93	1 (6%)	11,26,26	2.87	6 (54%)
5	ACT	B	860	-	1,3,3	1.69	0	0,3,3	0.00	-
5	ACT	A	860	-	1,3,3	1.52	0	0,3,3	0.00	-
3	H4B	B	760	-	16,18,18	1.19	2 (12%)	11,26,26	2.43	5 (45%)
2	HEM	B	750	1	27,50,50	2.31	9 (33%)	17,82,82	2.22	3 (17%)
4	8BX	A	800	-	29,31,31	1.00	2 (6%)	32,43,43	2.16	9 (28%)

In the following table, the Chirals column lists the number of chiral outliers, the number of chiral centers analysed, the number of these observed in the model and the number defined in the Chemical Component Dictionary. Similar counts are reported in the Torsion and Rings columns. '-' means no outliers of that kind were identified.

Mol	Type	Chain	Res	Link	Chirals	Torsions	Rings
4	8BX	B	800	-	-	9/17/29/29	0/3/3/3
2	HEM	A	750	1	-	0/6/54/54	-
3	H4B	A	760	-	-	0/8/17/17	0/2/2/2
3	H4B	B	760	-	-	0/8/17/17	0/2/2/2
2	HEM	B	750	1	-	0/6/54/54	-
4	8BX	A	800	-	-	10/17/29/29	0/3/3/3

All (22) bond length outliers are listed below:



Mol	Chain	Res	Type	Atoms	Z	Observed(Å)	Ideal(Å)
2	B	750	HEM	C3C-C2C	-5.57	1.32	1.40
2	A	750	HEM	C3B-C2B	-4.96	1.33	1.40
2	A	750	HEM	C3D-C2D	4.93	1.52	1.37
2	B	750	HEM	C3B-C2B	-4.71	1.33	1.40
2	B	750	HEM	C3D-C2D	4.06	1.49	1.37
2	B	750	HEM	C3C-CAC	3.73	1.55	1.47
2	A	750	HEM	C3C-CAC	3.36	1.54	1.47
2	B	750	HEM	C3B-CAB	3.30	1.54	1.47
2	A	750	HEM	C3B-CAB	3.23	1.54	1.47
2	B	750	HEM	CAD-C3D	3.04	1.57	1.52
2	A	750	HEM	C3C-C2C	-3.00	1.36	1.40
2	B	750	HEM	CMA-C3A	2.76	1.57	1.51
3	B	760	H4B	C7-C6	2.68	1.54	1.52
4	B	800	8BX	C22-CL22	2.65	1.79	1.73
4	B	800	8BX	F15-C14	-2.55	1.32	1.37
4	A	800	8BX	C22-CL22	2.52	1.79	1.73
3	B	760	H4B	C7-N8	2.49	1.48	1.44
2	A	750	HEM	CMA-C3A	2.49	1.56	1.51
2	B	750	HEM	C4A-NA	2.34	1.41	1.36
4	A	800	8BX	F15-C14	-2.21	1.32	1.37
2	B	750	HEM	CAA-C2A	2.05	1.55	1.52
3	A	760	H4B	C2-N2	2.01	1.37	1.33

All (38) bond angle outliers are listed below:

Mol	Chain	Res	Type	Atoms	Z	Observed(°)	Ideal(°)
2	A	750	HEM	CBD-CAD-C3D	-7.08	99.43	112.48
4	B	800	8BX	F15-C14-C21	-6.20	101.46	110.31
2	B	750	HEM	CBA-CAA-C2A	-5.92	101.56	112.49
4	B	800	8BX	C02-N01-C06	5.81	122.51	118.10
4	A	800	8BX	F15-C14-C21	-5.72	102.15	110.31
2	B	750	HEM	CBD-CAD-C3D	-5.59	102.19	112.48
4	A	800	8BX	C02-N01-C06	5.48	122.25	118.10
3	B	760	H4B	C4-C4A-C8A	5.40	119.36	114.57
2	A	750	HEM	CBA-CAA-C2A	-5.31	102.70	112.49
4	B	800	8BX	C21-C22-CL22	5.30	127.77	121.68
3	A	760	H4B	C4-C4A-N5	5.02	123.33	119.12
4	A	800	8BX	C21-C22-CL22	4.39	126.72	121.68
3	A	760	H4B	C4-C4A-C8A	4.16	118.26	114.57
3	A	760	H4B	N3-C2-N1	-3.74	119.55	125.42
4	A	800	8BX	C11-N12-C13	3.34	120.10	113.35
3	A	760	H4B	C4-N3-C2	3.28	121.15	115.93
3	A	760	H4B	C2-N1-C8A	3.28	121.89	114.54

*Continued on next page...*



*Continued from previous page...*

Mol	Chain	Res	Type	Atoms	Z	Observed(°)	Ideal(°)
4	B	800	8BX	N02-C02-N01	3.27	121.66	116.49
4	B	800	8BX	C05-C06-N01	-3.16	119.55	122.90
4	A	800	8BX	C5'-N1'-C2'	3.05	112.63	105.42
4	B	800	8BX	C23-C22-CL22	-2.96	112.46	118.41
3	B	760	H4B	C4-N3-C2	2.93	120.58	115.93
4	A	800	8BX	N02-C02-N01	2.91	121.09	116.49
2	A	750	HEM	C1D-C2D-C3D	-2.84	105.02	107.00
4	A	800	8BX	C05-C06-N01	-2.76	119.97	122.90
2	A	750	HEM	CMC-C2C-C3C	2.70	129.72	124.68
4	B	800	8BX	C5'-N1'-C2'	2.66	111.70	105.42
4	B	800	8BX	C11-N12-C13	2.64	118.70	113.35
3	B	760	H4B	C4-C4A-N5	2.60	121.31	119.12
4	B	800	8BX	C10-O09-C4'	2.54	119.76	113.87
3	B	760	H4B	N3-C2-N1	-2.53	121.45	125.42
4	A	800	8BX	C23-C22-CL22	-2.48	113.42	118.41
4	B	800	8BX	C10-C11-N12	2.36	117.23	111.44
4	A	800	8BX	F16-C14-C21	2.32	113.62	110.31
4	B	800	8BX	C26-C21-C22	2.30	119.20	116.62
3	B	760	H4B	C2-N1-C8A	2.19	119.44	114.54
2	B	750	HEM	C4C-C3C-C2C	2.11	108.37	106.90
3	A	760	H4B	N2-C2-N1	2.09	120.50	117.25

There are no chirality outliers.

All (19) torsion outliers are listed below:

Mol	Chain	Res	Type	Atoms
4	B	800	8BX	N01-C06-C08-C3'
4	B	800	8BX	N12-C13-C14-F15
4	B	800	8BX	N12-C13-C14-F16
4	B	800	8BX	C13-C14-C21-C26
4	B	800	8BX	F16-C14-C21-C22
4	B	800	8BX	F16-C14-C21-C26
4	A	800	8BX	N01-C06-C08-C3'
4	A	800	8BX	N12-C13-C14-F15
4	A	800	8BX	N12-C13-C14-F16
4	A	800	8BX	C13-C14-C21-C26
4	A	800	8BX	F16-C14-C21-C22
4	B	800	8BX	O09-C10-C11-N12
4	A	800	8BX	O09-C10-C11-N12
4	B	800	8BX	C10-C11-N12-C13
4	A	800	8BX	C10-C11-N12-C13
4	A	800	8BX	F15-C14-C21-C22

*Continued on next page...*



*Continued from previous page...*

Mol	Chain	Res	Type	Atoms
4	A	800	8BX	F15-C14-C21-C26
4	A	800	8BX	F16-C14-C21-C26
4	B	800	8BX	F15-C14-C21-C22

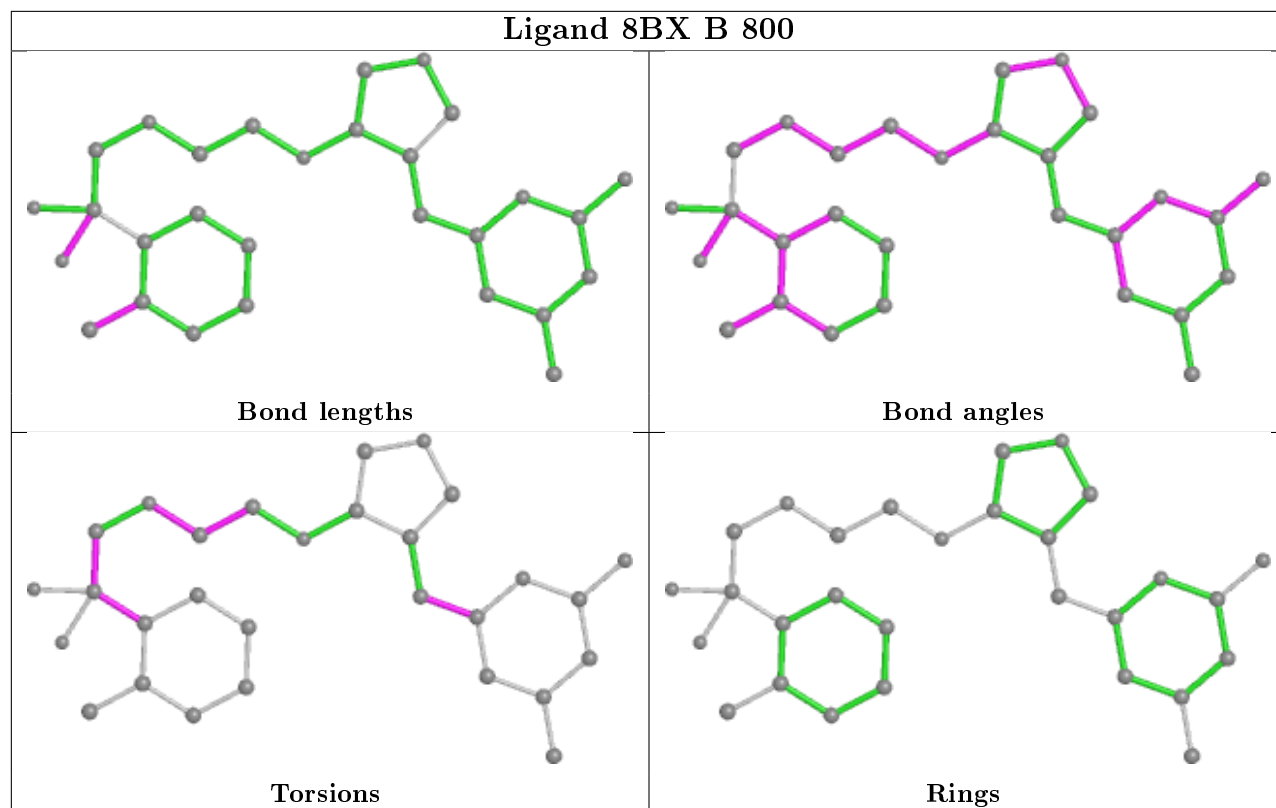
There are no ring outliers.

5 monomers are involved in 18 short contacts:

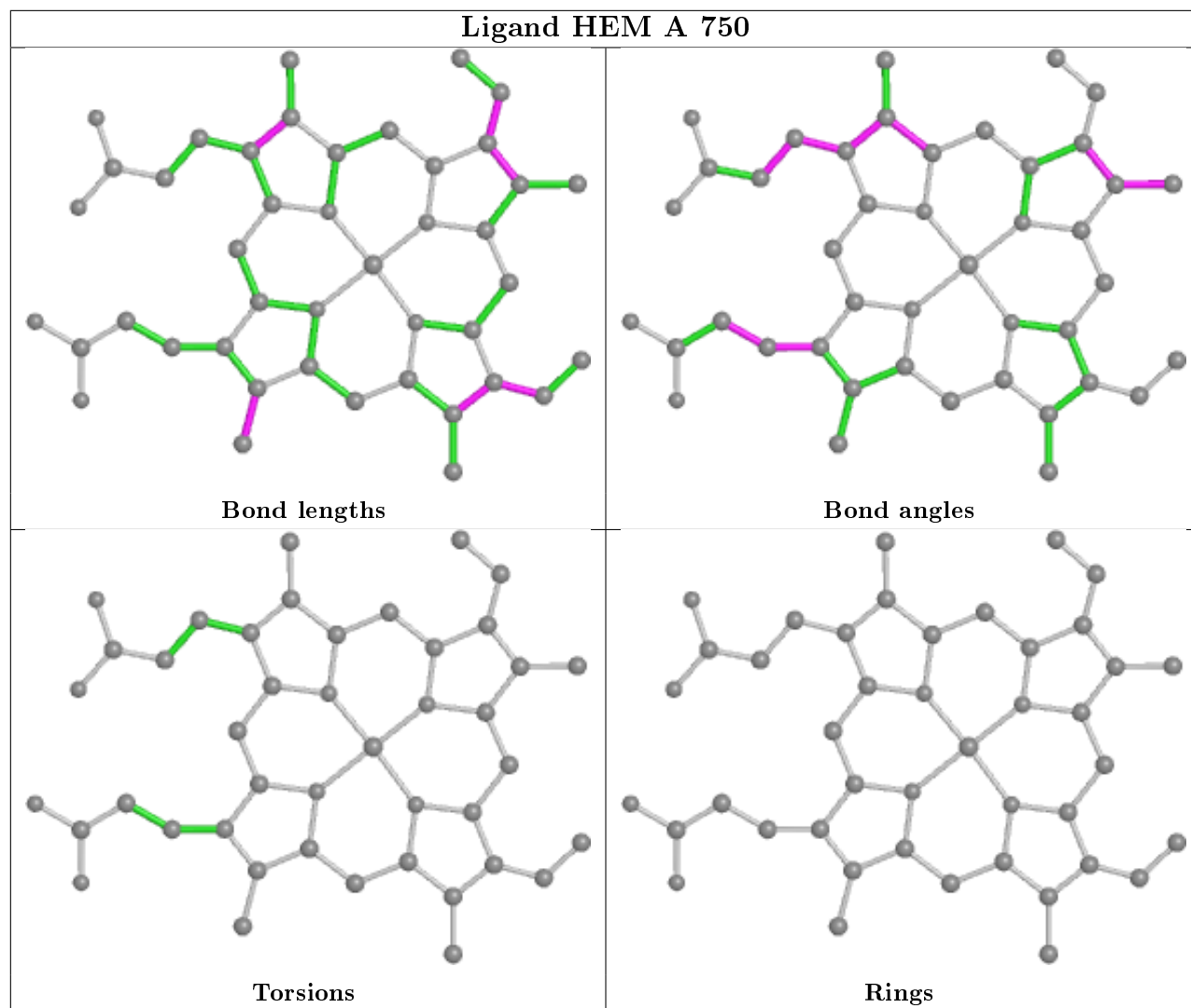
Mol	Chain	Res	Type	Clashes	Symm-Clashes
4	B	800	8BX	6	0
2	A	750	HEM	1	0
5	B	860	ACT	1	0
2	B	750	HEM	3	0
4	A	800	8BX	8	0

The following is a two-dimensional graphical depiction of Mogul quality analysis of bond lengths, bond angles, torsion angles, and ring geometry for all instances of the Ligand of Interest. In addition, ligands with molecular weight > 250 and outliers as shown on the validation Tables will also be included. For torsion angles, if less than 5% of the Mogul distribution of torsion angles is within 10 degrees of the torsion angle in question, then that torsion angle is considered an outlier. Any bond that is central to one or more torsion angles identified as an outlier by Mogul will be highlighted in the graph. For rings, the root-mean-square deviation (RMSD) between the ring in question and similar rings identified by Mogul is calculated over all ring torsion angles. If the average RMSD is greater than 60 degrees and the minimal RMSD between the ring in question and any Mogul-identified rings is also greater than 60 degrees, then that ring is considered an outlier. The outliers are highlighted in purple. The color gray indicates Mogul did not find sufficient equivalents in the CSD to analyse the geometry.

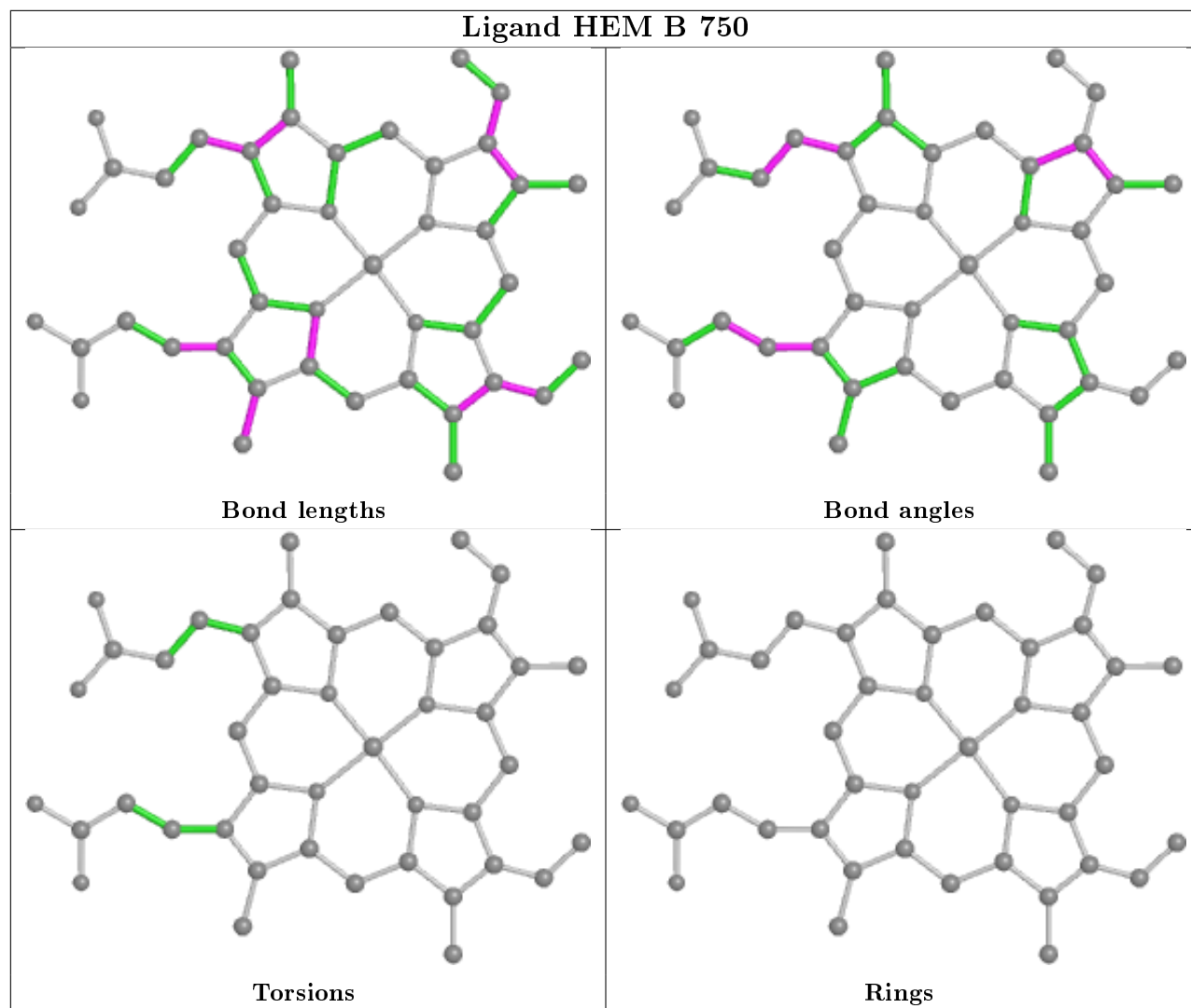




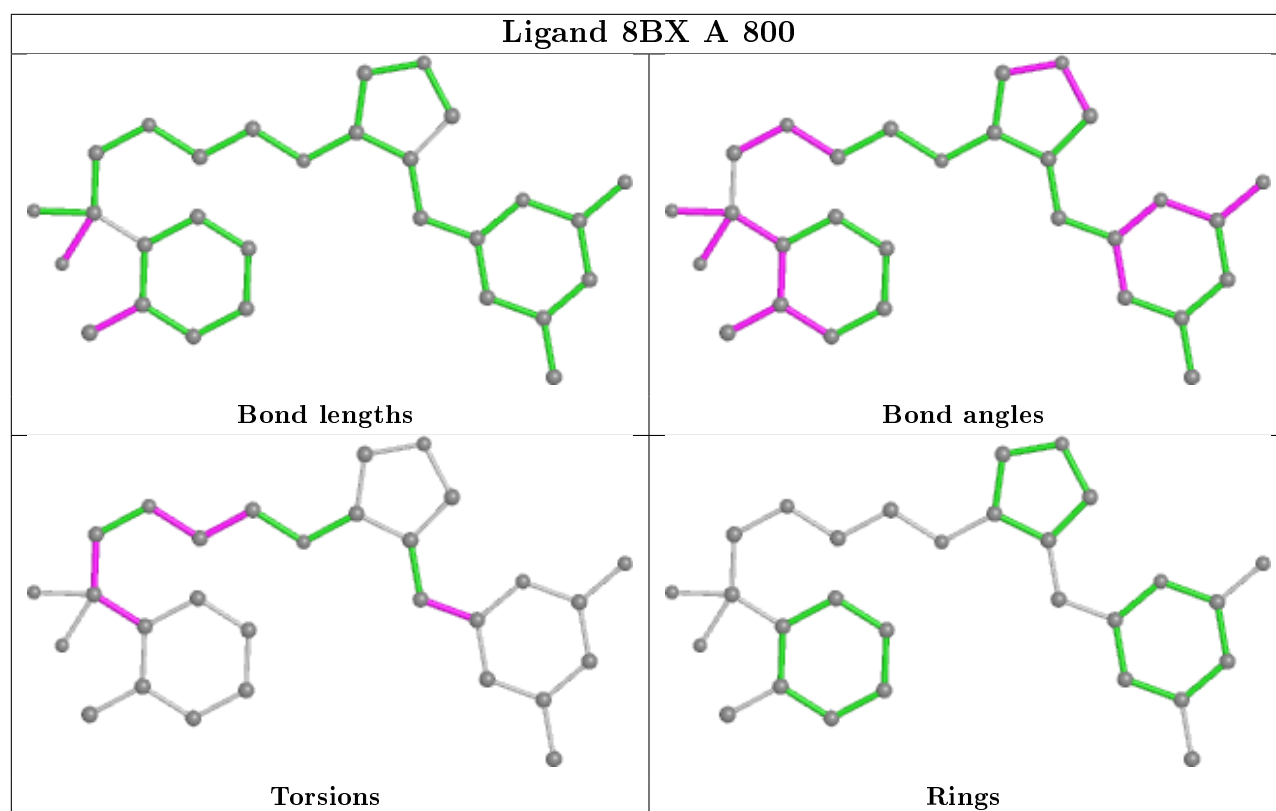












## 5.7 Other polymers [i](#)

There are no such residues in this entry.

## 5.8 Polymer linkage issues [i](#)

There are no chain breaks in this entry.



## 6 Fit of model and data ⓘ

### 6.1 Protein, DNA and RNA chains ⓘ

In the following table, the column labelled ‘#RSRZ> 2’ contains the number (and percentage) of RSRZ outliers, followed by percent RSRZ outliers for the chain as percentile scores relative to all X-ray entries and entries of similar resolution. The OWAB column contains the minimum, median, 95<sup>th</sup> percentile and maximum values of the occupancy-weighted average B-factor per residue. The column labelled ‘Q< 0.9’ lists the number of (and percentage) of residues with an average occupancy less than 0.9.

Mol	Chain	Analysed	<RSRZ>	#RSRZ>2	OWAB(Å <sup>2</sup> )	Q<0.9
1	A	409/422 (96%)	0.97	74 (18%) 1 1	25, 45, 77, 98	0
1	B	411/422 (97%)	0.43	35 (8%) 10 16	23, 35, 57, 72	0
All	All	820/844 (97%)	0.70	109 (13%) 3 4	23, 40, 71, 98	0

All (109) RSRZ outliers are listed below:

Mol	Chain	Res	Type	RSRZ
1	A	488	PRO	9.2
1	B	300	PHE	8.1
1	A	348	VAL	7.3
1	A	351	LYS	5.9
1	A	716	TRP	5.7
1	A	355	PHE	5.7
1	A	715	VAL	5.5
1	A	300	PHE	4.9
1	B	350	THR	4.8
1	A	713	THR	4.8
1	A	352	ASP	4.7
1	A	350	THR	4.4
1	A	486	LYS	4.4
1	A	322	LEU	4.3
1	A	392	SER	4.0
1	A	507	GLN	3.9
1	A	506	ILE	3.9
1	B	299	ARG	3.8
1	B	616	LEU	3.7
1	B	619	ARG	3.7
1	A	489	ASP	3.6
1	B	615	ASP	3.6
1	B	322	LEU	3.6
1	A	678	TRP	3.5

*Continued on next page...*



*Continued from previous page...*

Mol	Chain	Res	Type	RSRZ
1	A	321	THR	3.5
1	A	388	ILE	3.5
1	A	503	GLU	3.5
1	A	619	ARG	3.4
1	B	620	LYS	3.3
1	A	390	SER	3.2
1	A	299	ARG	3.2
1	A	567	VAL	3.2
1	B	567	VAL	3.1
1	A	469	LYS	3.1
1	B	310	VAL	3.1
1	A	385	ASN	3.1
1	A	490	GLY	3.1
1	A	386	LYS	3.0
1	A	677	VAL	3.0
1	A	680	VAL	3.0
1	A	480	ILE	3.0
1	A	706	TYR	2.9
1	A	509	GLY	2.9
1	B	680	VAL	2.9
1	B	617	ASP	2.8
1	A	511	LYS	2.8
1	A	679	ILE	2.8
1	A	535[A]	GLN	2.8
1	A	551	PHE	2.8
1	A	588	TYR	2.8
1	A	591	THR	2.7
1	A	349	ARG	2.7
1	B	321	THR	2.7
1	A	415	CYS	2.6
1	A	394	TYR	2.6
1	B	715	VAL	2.6
1	B	591	THR	2.6
1	A	492	THR	2.6
1	A	491	SER	2.6
1	A	514	ARG	2.6
1	B	584	PHE	2.5
1	A	389	GLU	2.5
1	B	677	VAL	2.5
1	A	584	PHE	2.5
1	A	681	PRO	2.5
1	A	302	LYS	2.5

*Continued on next page...*



*Continued from previous page...*

Mol	Chain	Res	Type	RSRZ
1	A	479	LEU	2.5
1	A	330	ILE	2.5
1	B	566	ALA	2.5
1	A	595	VAL	2.5
1	A	466	THR	2.4
1	A	593	ILE	2.4
1	B	691	PHE	2.4
1	A	714	HIS	2.4
1	A	565	PRO	2.4
1	A	667	ARG	2.4
1	B	667	ARG	2.3
1	A	592[A]	GLU	2.3
1	A	712	ASN	2.3
1	A	467	ASP	2.3
1	A	505	CYS	2.3
1	A	487	GLN	2.2
1	B	351	LYS	2.2
1	B	328	GLU	2.2
1	B	679	ILE	2.2
1	A	371	ARG	2.2
1	A	409	TRP	2.2
1	B	323	GLU	2.2
1	A	356	PRO	2.1
1	B	392	SER	2.1
1	A	552	ASP	2.1
1	B	352	ASP	2.1
1	A	686	SER	2.1
1	A	353	GLN	2.1
1	B	676	TRP	2.1
1	A	416	VAL	2.1
1	B	302	LYS	2.1
1	A	691	PHE	2.1
1	B	611	ALA	2.1
1	B	572	LEU	2.1
1	A	370	LYS	2.1
1	A	391	THR	2.0
1	B	311	VAL	2.0
1	B	590	GLY	2.0
1	B	593	ILE	2.0
1	A	682	PRO	2.0
1	B	592[A]	GLU	2.0
1	B	301	LEU	2.0

*Continued on next page...*



*Continued from previous page...*

Mol	Chain	Res	Type	RSRZ
1	A	328	GLU	2.0

## 6.2 Non-standard residues in protein, DNA, RNA chains [i](#)

There are no non-standard protein/DNA/RNA residues in this entry.

## 6.3 Carbohydrates [i](#)

There are no carbohydrates in this entry.

## 6.4 Ligands [i](#)

In the following table, the Atoms column lists the number of modelled atoms in the group and the number defined in the chemical component dictionary. The B-factors column lists the minimum, median, 95<sup>th</sup> percentile and maximum values of B factors of atoms in the group. The column labelled 'Q< 0.9' lists the number of atoms with occupancy less than 0.9.

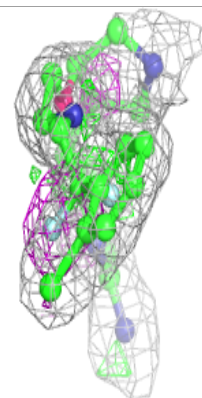
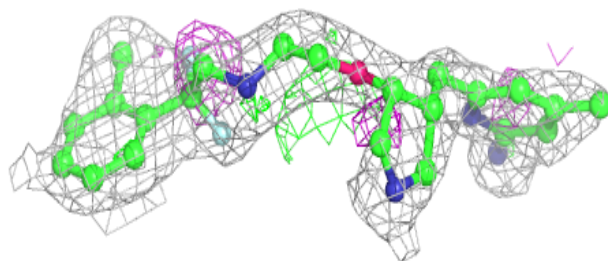
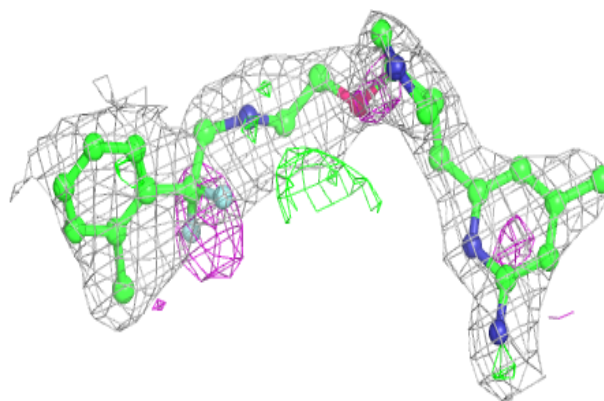
Mol	Type	Chain	Res	Atoms	RSCC	RSR	B-factors(Å <sup>2</sup> )	Q<0.9
4	8BX	A	800	29/29	0.66	0.30	49,58,61,65	0
4	8BX	B	800	29/29	0.78	0.22	30,37,53,59	0
3	H4B	A	760	17/17	0.95	0.19	30,34,37,38	0
3	H4B	B	760	17/17	0.96	0.17	27,31,34,35	0
5	ACT	A	860	4/4	0.97	0.25	51,51,52,54	0
2	HEM	A	750	43/43	0.97	0.20	26,30,40,41	0
5	ACT	B	860	4/4	0.97	0.12	38,42,42,44	0
2	HEM	B	750	43/43	0.98	0.19	23,28,36,40	0
6	ZN	A	900	1/1	1.00	0.05	33,33,33,33	0

The following is a graphical depiction of the model fit to experimental electron density of all instances of the Ligand of Interest. In addition, ligands with molecular weight > 250 and outliers as shown on the geometry validation Tables will also be included. Each fit is shown from different orientation to approximate a three-dimensional view.

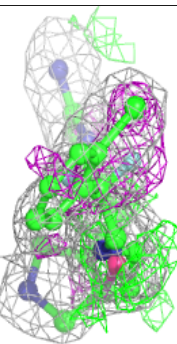
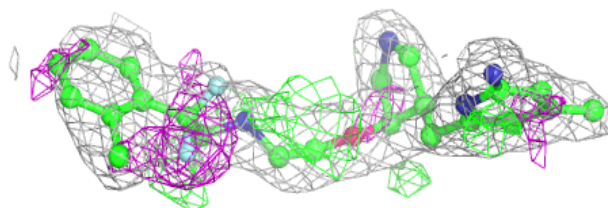
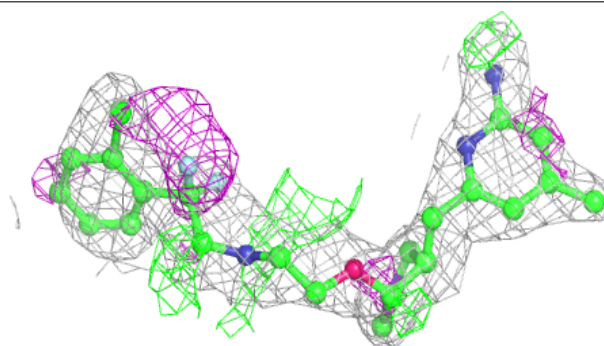


**Electron density around 8BX A 800:**

$2mF_o-DF_c$  (at 0.7 rmsd) in gray  
 $mF_o-DF_c$  (at 3 rmsd) in purple (negative)  
and green (positive)

**Electron density around 8BX B 800:**

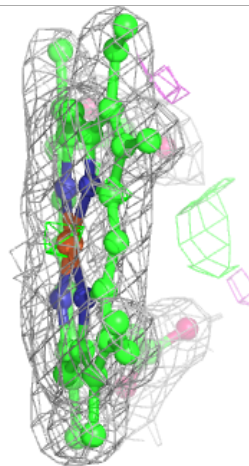
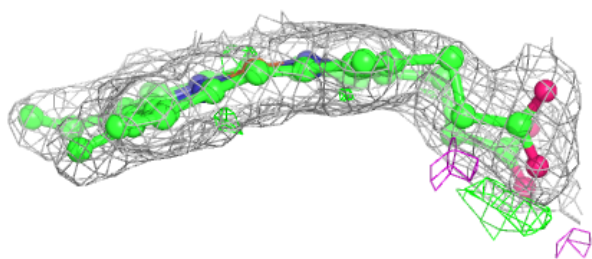
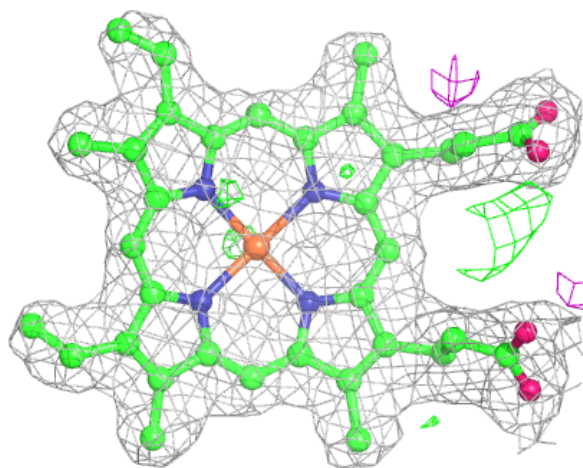
$2mF_o-DF_c$  (at 0.7 rmsd) in gray  
 $mF_o-DF_c$  (at 3 rmsd) in purple (negative)  
and green (positive)



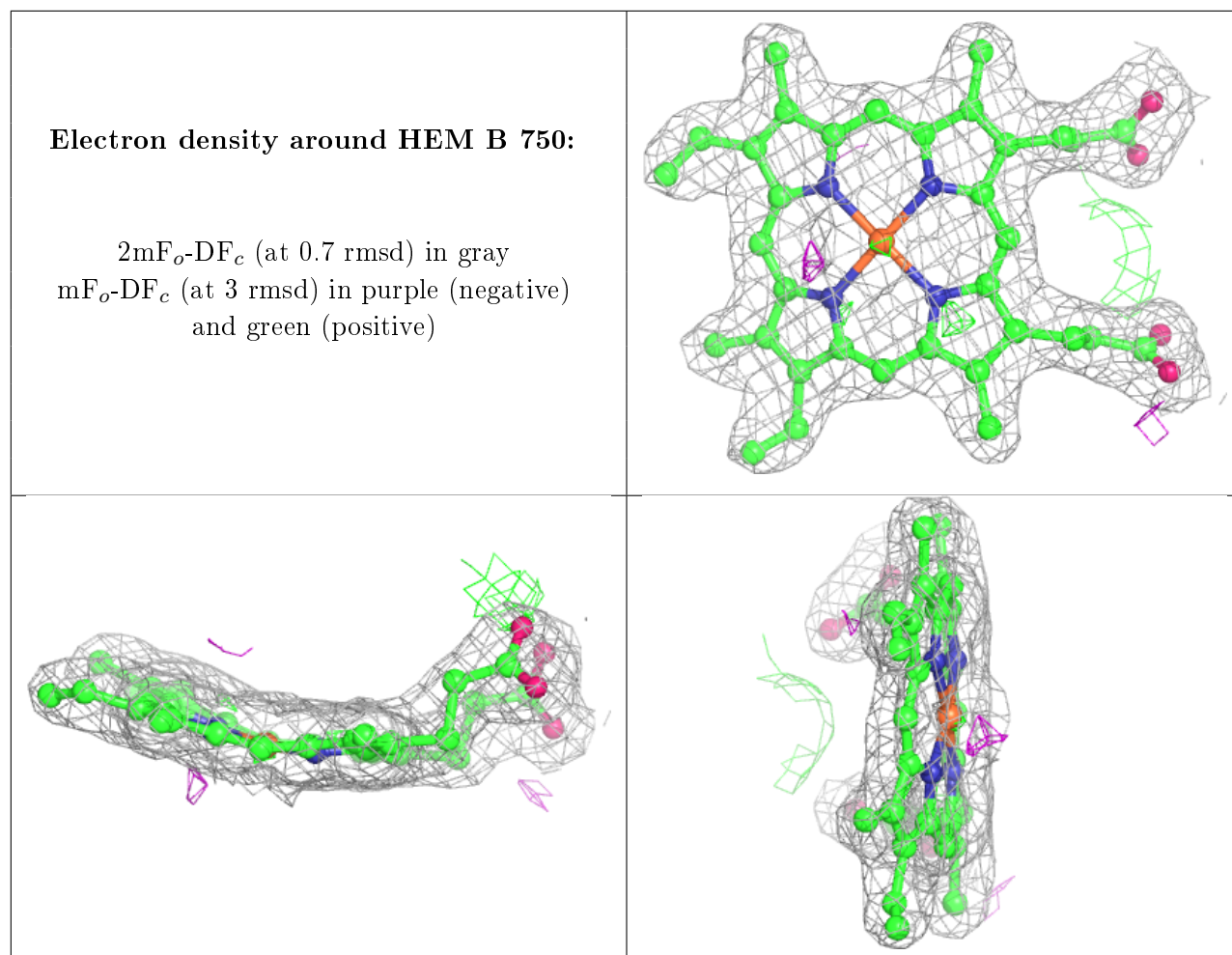


**Electron density around HEM A 750:**

$2mF_o-DF_c$  (at 0.7 rmsd) in gray  
 $mF_o-DF_c$  (at 3 rmsd) in purple (negative)  
and green (positive)







## 6.5 Other polymers ⓘ

There are no such residues in this entry.