



# wwPDB X-ray Structure Validation Summary Report ⓘ

May 21, 2020 – 12:26 pm BST

PDB ID : 4PNT  
Title : Crystal Structure of human Tankyrase 2 in complex with 1,5-IQD.  
Authors : Qiu, W.; Lam, R.; Romanov, V.; Gordon, R.; Gebremeskel, S.; Vodsedalek, J.; Thompson, C.; Beletskaya, I.; Battaile, K.P.; Pai, E.F.; Chirgadze, N.Y.  
Deposited on : 2014-05-25  
Resolution : 1.60 Å(reported)

This is a wwPDB X-ray Structure Validation Summary Report for a publicly released PDB entry.

We welcome your comments at [validation@mail.wwpdb.org](mailto:validation@mail.wwpdb.org)

A user guide is available at

<https://www.wwpdb.org/validation/2017/XrayValidationReportHelp>

with specific help available everywhere you see the ⓘ symbol.

---

The following versions of software and data (see [references ⓘ](#)) were used in the production of this report:

MolProbity	:	4.02b-467
Mogul	:	1.8.5 (274361), CSD as541be (2020)
Xtriage (Phenix)	:	1.13
EDS	:	2.11
Percentile statistics	:	20191225.v01 (using entries in the PDB archive December 25th 2019)
Refmac	:	5.8.0158
CCP4	:	7.0.044 (Gargrove)
Ideal geometry (proteins)	:	Engh & Huber (2001)
Ideal geometry (DNA, RNA)	:	Parkinson et al. (1996)
Validation Pipeline (wwPDB-VP)	:	2.11

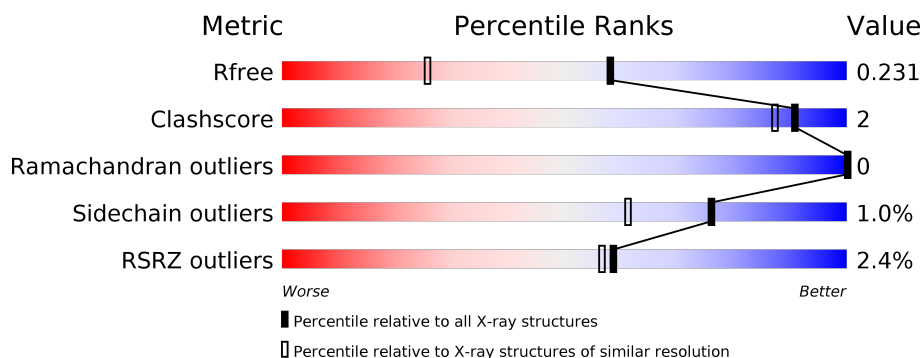
# 1 Overall quality at a glance

The following experimental techniques were used to determine the structure:

## *X-RAY DIFFRACTION*

The reported resolution of this entry is 1.60 Å.

Percentile scores (ranging between 0-100) for global validation metrics of the entry are shown in the following graphic. The table shows the number of entries on which the scores are based.



Metric	Whole archive (#Entries)	Similar resolution (#Entries, resolution range(Å))
$R_{free}$	130704	3398 (1.60-1.60)
Clashscore	141614	3665 (1.60-1.60)
Ramachandran outliers	138981	3564 (1.60-1.60)
Sidechain outliers	138945	3563 (1.60-1.60)
RSRZ outliers	127900	3321 (1.60-1.60)

The table below summarises the geometric issues observed across the polymeric chains and their fit to the electron density. The red, orange, yellow and green segments on the lower bar indicate the fraction of residues that contain outliers for  $\geq 3$ , 2, 1 and 0 types of geometric quality criteria respectively. A grey segment represents the fraction of residues that are not modelled. The numeric value for each fraction is indicated below the corresponding segment, with a dot representing fractions  $\leq 5\%$ . The upper red bar (where present) indicates the fraction of residues that have poor fit to the electron density. The numeric value is given above the bar.

Mol	Chain	Length	Quality of chain
1	A	227	<div> <div>2%</div> <div> <div></div> <div>84%</div> <div>12%</div> </div> </div>
1	B	227	<div> <div>3%</div> <div> <div></div> <div>86%</div> <div>10%</div> </div> </div>
1	C	227	<div> <div></div> <div> <div></div> <div>86%</div> <div>6%</div> <div>8%</div> </div> </div>
1	D	227	<div> <div>3%</div> <div> <div></div> <div>82%</div> <div>16%</div> </div> </div>

## 2 Entry composition

There are 4 unique types of molecules in this entry. The entry contains 7557 atoms, of which 0 are hydrogens and 0 are deuteriums.

In the tables below, the ZeroOcc column contains the number of atoms modelled with zero occupancy, the AltConf column contains the number of residues with at least one atom in alternate conformation and the Trace column contains the number of residues modelled with at most 2 atoms.

- Molecule 1 is a protein called Tankyrase-2.

Mol	Chain	Residues	Atoms					ZeroOcc	AltConf	Trace
1	A	199	Total	C	N	O	S	0	2	0
			1612	1012	299	290	11			
1	B	205	Total	C	N	O	S	0	3	0
			1674	1053	312	298	11			
1	C	209	Total	C	N	O	S	0	3	0
			1702	1075	311	305	11			
1	D	191	Total	C	N	O	S	0	0	0
			1547	975	287	274	11			

There are 84 discrepancies between the modelled and reference sequences:

Chain	Residue	Modelled	Actual	Comment	Reference
A	938	MET	-	initiating methionine	UNP Q9H2K2
A	939	GLY	-	expression tag	UNP Q9H2K2
A	940	SER	-	expression tag	UNP Q9H2K2
A	941	SER	-	expression tag	UNP Q9H2K2
A	942	HIS	-	expression tag	UNP Q9H2K2
A	943	HIS	-	expression tag	UNP Q9H2K2
A	944	HIS	-	expression tag	UNP Q9H2K2
A	945	HIS	-	expression tag	UNP Q9H2K2
A	946	HIS	-	expression tag	UNP Q9H2K2
A	947	HIS	-	expression tag	UNP Q9H2K2
A	948	SER	-	expression tag	UNP Q9H2K2
A	949	SER	-	expression tag	UNP Q9H2K2
A	950	GLY	-	expression tag	UNP Q9H2K2
A	951	ARG	-	expression tag	UNP Q9H2K2
A	952	GLU	-	expression tag	UNP Q9H2K2
A	953	ASN	-	expression tag	UNP Q9H2K2
A	954	LEU	-	expression tag	UNP Q9H2K2
A	955	TYR	-	expression tag	UNP Q9H2K2
A	956	PHE	-	expression tag	UNP Q9H2K2
A	957	GLN	-	expression tag	UNP Q9H2K2
A	958	GLY	-	expression tag	UNP Q9H2K2

*Continued on next page...*

*Continued from previous page...*

Chain	Residue	Modelled	Actual	Comment	Reference
B	938	MET	-	initiating methionine	UNP Q9H2K2
B	939	GLY	-	expression tag	UNP Q9H2K2
B	940	SER	-	expression tag	UNP Q9H2K2
B	941	SER	-	expression tag	UNP Q9H2K2
B	942	HIS	-	expression tag	UNP Q9H2K2
B	943	HIS	-	expression tag	UNP Q9H2K2
B	944	HIS	-	expression tag	UNP Q9H2K2
B	945	HIS	-	expression tag	UNP Q9H2K2
B	946	HIS	-	expression tag	UNP Q9H2K2
B	947	HIS	-	expression tag	UNP Q9H2K2
B	948	SER	-	expression tag	UNP Q9H2K2
B	949	SER	-	expression tag	UNP Q9H2K2
B	950	GLY	-	expression tag	UNP Q9H2K2
B	951	ARG	-	expression tag	UNP Q9H2K2
B	952	GLU	-	expression tag	UNP Q9H2K2
B	953	ASN	-	expression tag	UNP Q9H2K2
B	954	LEU	-	expression tag	UNP Q9H2K2
B	955	TYR	-	expression tag	UNP Q9H2K2
B	956	PHE	-	expression tag	UNP Q9H2K2
B	957	GLN	-	expression tag	UNP Q9H2K2
B	958	GLY	-	expression tag	UNP Q9H2K2
C	938	MET	-	initiating methionine	UNP Q9H2K2
C	939	GLY	-	expression tag	UNP Q9H2K2
C	940	SER	-	expression tag	UNP Q9H2K2
C	941	SER	-	expression tag	UNP Q9H2K2
C	942	HIS	-	expression tag	UNP Q9H2K2
C	943	HIS	-	expression tag	UNP Q9H2K2
C	944	HIS	-	expression tag	UNP Q9H2K2
C	945	HIS	-	expression tag	UNP Q9H2K2
C	946	HIS	-	expression tag	UNP Q9H2K2
C	947	HIS	-	expression tag	UNP Q9H2K2
C	948	SER	-	expression tag	UNP Q9H2K2
C	949	SER	-	expression tag	UNP Q9H2K2
C	950	GLY	-	expression tag	UNP Q9H2K2
C	951	ARG	-	expression tag	UNP Q9H2K2
C	952	GLU	-	expression tag	UNP Q9H2K2
C	953	ASN	-	expression tag	UNP Q9H2K2
C	954	LEU	-	expression tag	UNP Q9H2K2
C	955	TYR	-	expression tag	UNP Q9H2K2
C	956	PHE	-	expression tag	UNP Q9H2K2
C	957	GLN	-	expression tag	UNP Q9H2K2
C	958	GLY	-	expression tag	UNP Q9H2K2

*Continued on next page...*

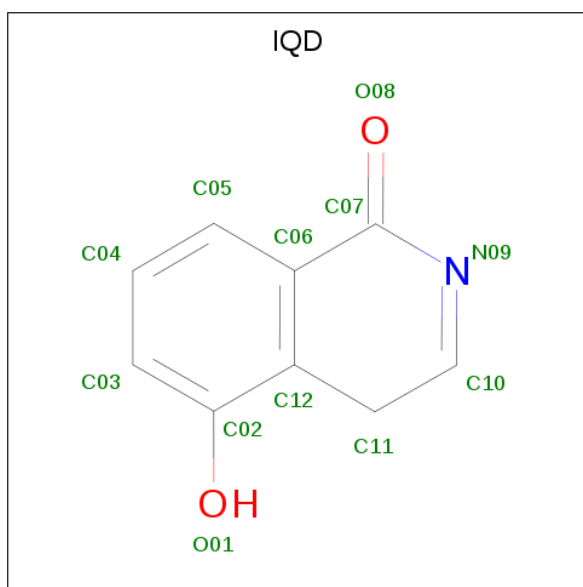
*Continued from previous page...*

Chain	Residue	Modelled	Actual	Comment	Reference
D	938	MET	-	initiating methionine	UNP Q9H2K2
D	939	GLY	-	expression tag	UNP Q9H2K2
D	940	SER	-	expression tag	UNP Q9H2K2
D	941	SER	-	expression tag	UNP Q9H2K2
D	942	HIS	-	expression tag	UNP Q9H2K2
D	943	HIS	-	expression tag	UNP Q9H2K2
D	944	HIS	-	expression tag	UNP Q9H2K2
D	945	HIS	-	expression tag	UNP Q9H2K2
D	946	HIS	-	expression tag	UNP Q9H2K2
D	947	HIS	-	expression tag	UNP Q9H2K2
D	948	SER	-	expression tag	UNP Q9H2K2
D	949	SER	-	expression tag	UNP Q9H2K2
D	950	GLY	-	expression tag	UNP Q9H2K2
D	951	ARG	-	expression tag	UNP Q9H2K2
D	952	GLU	-	expression tag	UNP Q9H2K2
D	953	ASN	-	expression tag	UNP Q9H2K2
D	954	LEU	-	expression tag	UNP Q9H2K2
D	955	TYR	-	expression tag	UNP Q9H2K2
D	956	PHE	-	expression tag	UNP Q9H2K2
D	957	GLN	-	expression tag	UNP Q9H2K2
D	958	GLY	-	expression tag	UNP Q9H2K2

- Molecule 2 is ZINC ION (three-letter code: ZN) (formula: Zn).

Mol	Chain	Residues	Atoms	ZeroOcc	AltConf
2	B	1	Total Zn 1 1	0	0
2	A	1	Total Zn 1 1	0	0
2	D	1	Total Zn 1 1	0	0
2	C	1	Total Zn 1 1	0	0

- Molecule 3 is 5-hydroxyisoquinolin-1(4H)-one (three-letter code: IQD) (formula: C<sub>9</sub>H<sub>7</sub>NO<sub>2</sub>).



Mol	Chain	Residues	Atoms				ZeroOcc	AltConf
3	A	1	Total	C	N	O	0	0
			12	9	1	2		
3	B	1	Total	C	N	O	0	0
			12	9	1	2		
3	C	1	Total	C	N	O	0	0
			12	9	1	2		

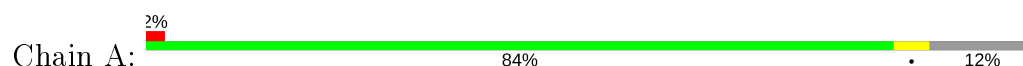
- Molecule 4 is water.

Mol	Chain	Residues	Atoms		ZeroOcc	AltConf
4	A	241	Total	O	0	0
			241	241		
4	B	269	Total	O	0	0
			269	269		
4	C	271	Total	O	0	0
			271	271		
4	D	201	Total	O	0	0
			201	201		

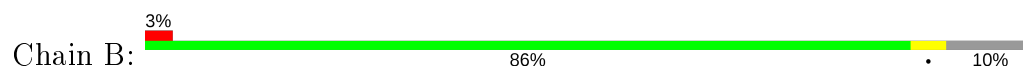
### 3 Residue-property plots [i](#)

These plots are drawn for all protein, RNA and DNA chains in the entry. The first graphic for a chain summarises the proportions of the various outlier classes displayed in the second graphic. The second graphic shows the sequence view annotated by issues in geometry and electron density. Residues are color-coded according to the number of geometric quality criteria for which they contain at least one outlier: green = 0, yellow = 1, orange = 2 and red = 3 or more. A red dot above a residue indicates a poor fit to the electron density ( $RSRZ > 2$ ). Stretches of 2 or more consecutive residues without any outlier are shown as a green connector. Residues present in the sample, but not in the model, are shown in grey.

#### • Molecule 1: Tankyrase-2



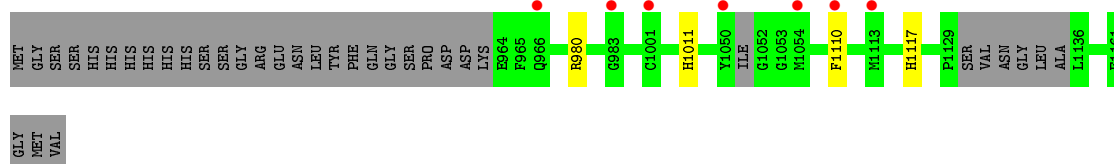
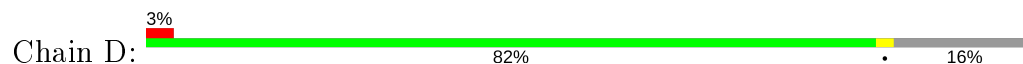
#### • Molecule 1: Tankyrase-2



#### • Molecule 1: Tankyrase-2



#### • Molecule 1: Tankyrase-2



## 4 Data and refinement statistics

Property	Value	Source
Space group	P 21 21 21	Depositor
Cell constants a, b, c, $\alpha$ , $\beta$ , $\gamma$	73.98Å 79.59Å 153.48Å 90.00° 90.00° 90.00°	Depositor
Resolution (Å)	76.74 – 1.60 70.65 – 1.60	Depositor EDS
% Data completeness (in resolution range)	92.9 (76.74-1.60) 93.0 (70.65-1.60)	Depositor EDS
$R_{merge}$	0.06	Depositor
$R_{sym}$	(Not available)	Depositor
$\langle I/\sigma(I) \rangle$ <sup>1</sup>	1.72 (at 1.60Å)	Xtriage
Refinement program	BUSTER-TNT BUSTER 2.10.0, BUSTER 2.10.0	Depositor
R, $R_{free}$	0.191 , 0.226 0.193 , 0.231	Depositor DCC
$R_{free}$ test set	1120 reflections (1.00%)	wwPDB-VP
Wilson B-factor (Å <sup>2</sup> )	18.1	Xtriage
Anisotropy	0.358	Xtriage
Bulk solvent $k_{sol}$ (e/Å <sup>3</sup> ), $B_{sol}$ (Å <sup>2</sup> )	0.36 , 55.2	EDS
L-test for twinning <sup>2</sup>	$\langle  L  \rangle = 0.49$ , $\langle L^2 \rangle = 0.32$	Xtriage
Estimated twinning fraction	No twinning to report.	Xtriage
$F_o, F_c$ correlation	0.96	EDS
Total number of atoms	7557	wwPDB-VP
Average B, all atoms (Å <sup>2</sup> )	27.0	wwPDB-VP

Xtriage's analysis on translational NCS is as follows: *The largest off-origin peak in the Patterson function is 14.74% of the height of the origin peak. No significant pseudotranslation is detected.*

<sup>1</sup>Intensities estimated from amplitudes.

<sup>2</sup>Theoretical values of  $\langle |L| \rangle$ ,  $\langle L^2 \rangle$  for acentric reflections are 0.5, 0.333 respectively for untwinned datasets, and 0.375, 0.2 for perfectly twinned datasets.



## 5 Model quality [i](#)

### 5.1 Standard geometry [i](#)

Bond lengths and bond angles in the following residue types are not validated in this section: IQD, ZN

The Z score for a bond length (or angle) is the number of standard deviations the observed value is removed from the expected value. A bond length (or angle) with  $|Z| > 5$  is considered an outlier worth inspection. RMSZ is the root-mean-square of all Z scores of the bond lengths (or angles).

Mol	Chain	Bond lengths		Bond angles	
		RMSZ	$\# Z  > 5$	RMSZ	$\# Z  > 5$
1	A	0.56	0/1656	0.67	0/2224
1	B	0.55	0/1724	0.69	0/2315
1	C	0.55	0/1752	0.68	0/2357
1	D	0.52	0/1588	0.65	0/2131
All	All	0.55	0/6720	0.67	0/9027

There are no bond length outliers.

There are no bond angle outliers.

There are no chirality outliers.

There are no planarity outliers.

### 5.2 Too-close contacts [i](#)

In the following table, the Non-H and H(model) columns list the number of non-hydrogen atoms and hydrogen atoms in the chain respectively. The H(added) column lists the number of hydrogen atoms added and optimized by MolProbity. The Clashes column lists the number of clashes within the asymmetric unit, whereas Symm-Clashes lists symmetry related clashes.

Mol	Chain	Non-H	H(model)	H(added)	Clashes	Symm-Clashes
1	A	1612	0	1545	4	0
1	B	1674	0	1607	5	0
1	C	1702	0	1619	12	0
1	D	1547	0	1474	4	0
2	A	1	0	0	0	0
2	B	1	0	0	0	0
2	C	1	0	0	0	0
2	D	1	0	0	0	0
3	A	12	0	7	0	0

*Continued on next page...*

*Continued from previous page...*

Mol	Chain	Non-H	H(model)	H(added)	Clashes	Symm-Clashes
3	B	12	0	7	0	0
3	C	12	0	7	0	0
4	A	241	0	0	1	0
4	B	269	0	0	1	0
4	C	271	0	0	4	0
4	D	201	0	0	2	0
All	All	7557	0	6266	22	0

The all-atom clashscore is defined as the number of clashes found per 1000 atoms (including hydrogen atoms). The all-atom clashscore for this structure is 2.

The worst 5 of 22 close contacts within the same asymmetric unit are listed below, sorted by their clash magnitude.

Atom-1	Atom-2	Interatomic distance (Å)	Clash overlap (Å)
1:C:1105:LYS:H	1:C:1123:HIS:HD2	1.24	0.82
1:C:1008:ARG:NH2	4:C:1525:HOH:O	2.26	0.68
1:D:1117:HIS:HD2	4:D:1435:HOH:O	1.83	0.61
1:B:1057:ALA:O	1:D:1117:HIS:HE1	1.85	0.60
1:B:963:LYS:HA	1:B:966:GLN:HG2	1.89	0.55

There are no symmetry-related clashes.

## 5.3 Torsion angles ⓘ

### 5.3.1 Protein backbone ⓘ

In the following table, the Percentiles column shows the percent Ramachandran outliers of the chain as a percentile score with respect to all X-ray entries followed by that with respect to entries of similar resolution.

The Analysed column shows the number of residues for which the backbone conformation was analysed, and the total number of residues.

Mol	Chain	Analysed	Favoured	Allowed	Outliers	Percentiles	
1	A	197/227 (87%)	195 (99%)	2 (1%)	0	100	100
1	B	204/227 (90%)	202 (99%)	2 (1%)	0	100	100
1	C	210/227 (92%)	208 (99%)	2 (1%)	0	100	100
1	D	185/227 (82%)	182 (98%)	3 (2%)	0	100	100
All	All	796/908 (88%)	787 (99%)	9 (1%)	0	100	100

There are no Ramachandran outliers to report.

### 5.3.2 Protein sidechains ⓘ

In the following table, the Percentiles column shows the percent sidechain outliers of the chain as a percentile score with respect to all X-ray entries followed by that with respect to entries of similar resolution.

The Analysed column shows the number of residues for which the sidechain conformation was analysed, and the total number of residues.

Mol	Chain	Analysed	Rotameric	Outliers	Percentiles	
1	A	170/192 (88%)	168 (99%)	2 (1%)	71	54
1	B	176/192 (92%)	174 (99%)	2 (1%)	73	57
1	C	178/192 (93%)	176 (99%)	2 (1%)	73	57
1	D	161/192 (84%)	160 (99%)	1 (1%)	86	77
All	All	685/768 (89%)	678 (99%)	7 (1%)	76	61

5 of 7 residues with a non-rotameric sidechain are listed below:

Mol	Chain	Res	Type
1	B	1100	ARG
1	D	980	ARG
1	C	1054	MET
1	A	1100	ARG
1	C	1146	GLN

Some sidechains can be flipped to improve hydrogen bonding and reduce clashes. 5 of 7 such sidechains are listed below:

Mol	Chain	Res	Type
1	C	1123	HIS
1	D	1117	HIS
1	D	1011	HIS
1	C	1011	HIS
1	D	1021	HIS

### 5.3.3 RNA ⓘ

There are no RNA molecules in this entry.

## 5.4 Non-standard residues in protein, DNA, RNA chains [i](#)

There are no non-standard protein/DNA/RNA residues in this entry.

## 5.5 Carbohydrates [i](#)

There are no carbohydrates in this entry.

## 5.6 Ligand geometry [i](#)

Of 7 ligands modelled in this entry, 4 are monoatomic - leaving 3 for Mogul analysis.

In the following table, the Counts columns list the number of bonds (or angles) for which Mogul statistics could be retrieved, the number of bonds (or angles) that are observed in the model and the number of bonds (or angles) that are defined in the Chemical Component Dictionary. The Link column lists molecule types, if any, to which the group is linked. The Z score for a bond length (or angle) is the number of standard deviations the observed value is removed from the expected value. A bond length (or angle) with  $|Z| > 2$  is considered an outlier worth inspection. RMSZ is the root-mean-square of all Z scores of the bond lengths (or angles).

Mol	Type	Chain	Res	Link	Bond lengths			Bond angles		
					Counts	RMSZ	# $ Z  > 2$	Counts	RMSZ	# $ Z  > 2$
3	IQD	C	1201	-	12,13,13	3.48	9 (75%)	14,18,18	2.64	4 (28%)
3	IQD	B	1202	-	12,13,13	3.27	8 (66%)	14,18,18	2.62	4 (28%)
3	IQD	A	1202	-	12,13,13	3.49	8 (66%)	14,18,18	2.68	5 (35%)

In the following table, the Chirals column lists the number of chiral outliers, the number of chiral centers analysed, the number of these observed in the model and the number defined in the Chemical Component Dictionary. Similar counts are reported in the Torsion and Rings columns. '-' means no outliers of that kind were identified.

Mol	Type	Chain	Res	Link	Chirals	Torsions	Rings
3	IQD	C	1201	-	-	-	0/1/2/2
3	IQD	B	1202	-	-	-	0/1/2/2
3	IQD	A	1202	-	-	-	0/1/2/2

The worst 5 of 25 bond length outliers are listed below:

Mol	Chain	Res	Type	Atoms	Z	Observed(Å)	Ideal(Å)
3	C	1201	IQD	O08-C07	6.89	1.35	1.23
3	B	1202	IQD	O08-C07	6.12	1.34	1.23
3	A	1202	IQD	O08-C07	6.03	1.34	1.23
3	A	1202	IQD	C10-N09	5.60	1.42	1.28

*Continued on next page...*

*Continued from previous page...*

Mol	Chain	Res	Type	Atoms	Z	Observed(Å)	Ideal(Å)
3	C	1201	IQD	C10-N09	5.36	1.41	1.28

The worst 5 of 13 bond angle outliers are listed below:

Mol	Chain	Res	Type	Atoms	Z	Observed(°)	Ideal(°)
3	C	1201	IQD	C12-C06-C07	-6.68	115.22	120.21
3	A	1202	IQD	C12-C06-C07	-6.68	115.22	120.21
3	B	1202	IQD	C12-C06-C07	-6.30	115.51	120.21
3	B	1202	IQD	C06-C07-N09	5.44	125.46	117.88
3	A	1202	IQD	C06-C07-N09	5.17	125.08	117.88

There are no chirality outliers.

There are no torsion outliers.

There are no ring outliers.

No monomer is involved in short contacts.

## 5.7 Other polymers [i](#)

There are no such residues in this entry.

## 5.8 Polymer linkage issues [i](#)

There are no chain breaks in this entry.

## 6 Fit of model and data [i](#)

### 6.1 Protein, DNA and RNA chains [i](#)

In the following table, the column labelled ‘#RSRZ> 2’ contains the number (and percentage) of RSRZ outliers, followed by percent RSRZ outliers for the chain as percentile scores relative to all X-ray entries and entries of similar resolution. The OWAB column contains the minimum, median, 95<sup>th</sup> percentile and maximum values of the occupancy-weighted average B-factor per residue. The column labelled ‘Q< 0.9’ lists the number of (and percentage) of residues with an average occupancy less than 0.9.

Mol	Chain	Analysed	<RSRZ>	#RSRZ>2	OWAB(Å <sup>2</sup> )	Q<0.9
1	A	199/227 (87%)	-0.31	4 (2%) 65 64	12, 22, 46, 70	1 (0%)
1	B	205/227 (90%)	-0.30	7 (3%) 45 42	12, 21, 45, 69	0
1	C	209/227 (92%)	-0.37	1 (0%) 91 90	12, 20, 43, 71	0
1	D	191/227 (84%)	-0.17	7 (3%) 41 39	15, 26, 50, 66	0
All	All	804/908 (88%)	-0.29	19 (2%) 59 56	12, 22, 45, 71	1 (0%)

The worst 5 of 19 RSRZ outliers are listed below:

Mol	Chain	Res	Type	RSRZ
1	B	961	ASP	5.7
1	B	960	PRO	4.6
1	A	1131	VAL	4.3
1	D	1113	MET	4.2
1	C	965[A]	PHE	3.9

### 6.2 Non-standard residues in protein, DNA, RNA chains [i](#)

There are no non-standard protein/DNA/RNA residues in this entry.

### 6.3 Carbohydrates [i](#)

There are no carbohydrates in this entry.

### 6.4 Ligands [i](#)

In the following table, the Atoms column lists the number of modelled atoms in the group and the number defined in the chemical component dictionary. The B-factors column lists the minimum, median, 95<sup>th</sup> percentile and maximum values of B factors of atoms in the group. The column labelled ‘Q< 0.9’ lists the number of atoms with occupancy less than 0.9.

Mol	Type	Chain	Res	Atoms	RSCC	RSR	B-factors( $\text{\AA}^2$ )	Q<0.9
3	IQD	B	1202	12/12	0.84	0.16	18,23,27,27	0
3	IQD	A	1202	12/12	0.85	0.18	22,25,26,30	0
2	ZN	D	1200	1/1	0.95	0.07	33,33,33,33	0
3	IQD	C	1201	12/12	0.95	0.08	16,18,20,20	0
2	ZN	A	1201	1/1	0.96	0.05	28,28,28,28	0
2	ZN	C	1202	1/1	0.97	0.08	29,29,29,29	0
2	ZN	B	1201	1/1	0.97	0.08	30,30,30,30	0

## 6.5 Other polymers [i](#)

There are no such residues in this entry.