



Full wwPDB X-ray Structure Validation Report ⓘ

Aug 22, 2020 – 02:17 PM BST

PDB ID : 6PO8
Title : Structure of human neuronal nitric oxide synthase R354A/G357D mutant heme domain in complex with 4-((4-(2-Amino-4-methylquinolin-7-yl)-2-(aminomethyl)phenoxy)methyl)benzonitrile
Authors : Li, H.; Poulos, T.L.
Deposited on : 2019-07-03
Resolution : 1.90 Å(reported)

This is a Full wwPDB X-ray Structure Validation Report for a publicly released PDB entry.

We welcome your comments at validation@mail.wwpdb.org

A user guide is available at

<https://www.wwpdb.org/validation/2017/XrayValidationReportHelp>

with specific help available everywhere you see the ⓘ symbol.

The following versions of software and data (see [references ⓘ](#)) were used in the production of this report:

MolProbity : 4.02b-467
Mogul : 1.8.5 (274361), CSD as541be (2020)
Xtriage (Phenix) : 1.13
EDS : 2.13.1
buster-report : 1.1.7 (2018)
Percentile statistics : 20191225.v01 (using entries in the PDB archive December 25th 2019)
Refmac : 5.8.0158
CCP4 : 7.0.044 (Gargrove)
Ideal geometry (proteins) : Engh & Huber (2001)
Ideal geometry (DNA, RNA) : Parkinson et al. (1996)
Validation Pipeline (wwPDB-VP) : 2.13.1

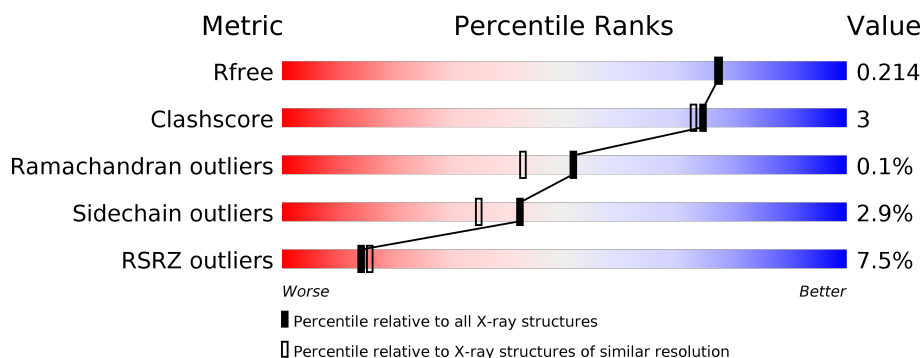
1 Overall quality at a glance ⓘ

The following experimental techniques were used to determine the structure:

X-RAY DIFFRACTION

The reported resolution of this entry is 1.90 Å.

Percentile scores (ranging between 0-100) for global validation metrics of the entry are shown in the following graphic. The table shows the number of entries on which the scores are based.



Metric	Whole archive (#Entries)	Similar resolution (#Entries, resolution range(Å))
R_{free}	130704	6207 (1.90-1.90)
Clashscore	141614	6847 (1.90-1.90)
Ramachandran outliers	138981	6760 (1.90-1.90)
Sidechain outliers	138945	6760 (1.90-1.90)
RSRZ outliers	127900	6082 (1.90-1.90)

The table below summarises the geometric issues observed across the polymeric chains and their fit to the electron density. The red, orange, yellow and green segments on the lower bar indicate the fraction of residues that contain outliers for ≥ 3 , 2, 1 and 0 types of geometric quality criteria respectively. A grey segment represents the fraction of residues that are not modelled. The numeric value for each fraction is indicated below the corresponding segment, with a dot representing fractions $\leq 5\%$. The upper red bar (where present) indicates the fraction of residues that have poor fit to the electron density. The numeric value is given above the bar.

Mol	Chain	Length	Quality of chain
1	A	421	<div> <div>5%</div> <div> <div></div> <div>90%</div> <div>8%</div> <div>••</div> </div> </div>
1	B	421	<div> <div>10%</div> <div> <div></div> <div>87%</div> <div>10%</div> <div>•</div> </div> </div>

In the tables below, the ZeroOcc column contains the number of atoms modelled with zero occupancy, the AltConf column contains the number of residues with at least one atom in alternate conformation and the Trace column contains the number of residues modelled with at most 2 atoms.

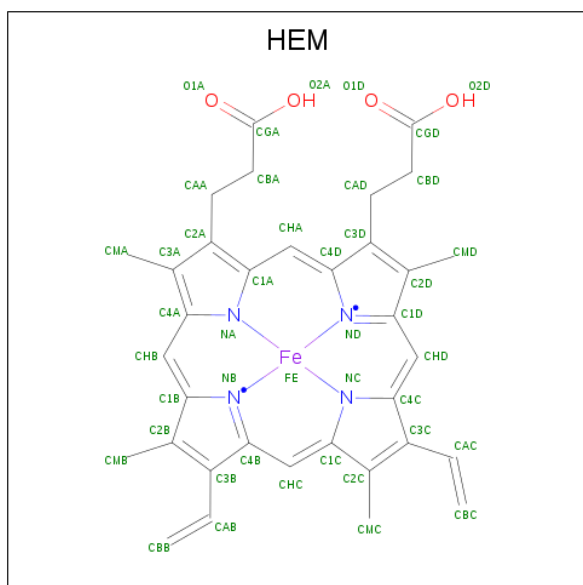
- Molecule 1 is a protein called Nitric oxide synthase, brain.

Mol	Chain	Residues	Atoms					ZeroOcc	AltConf	Trace
1	A	414	Total	C	N	O	S	0	6	0
			3396	2175	577	621	23			
1	B	409	Total	C	N	O	S	0	4	0
			3356	2151	572	612	21			

There are 4 discrepancies between the modelled and reference sequences:

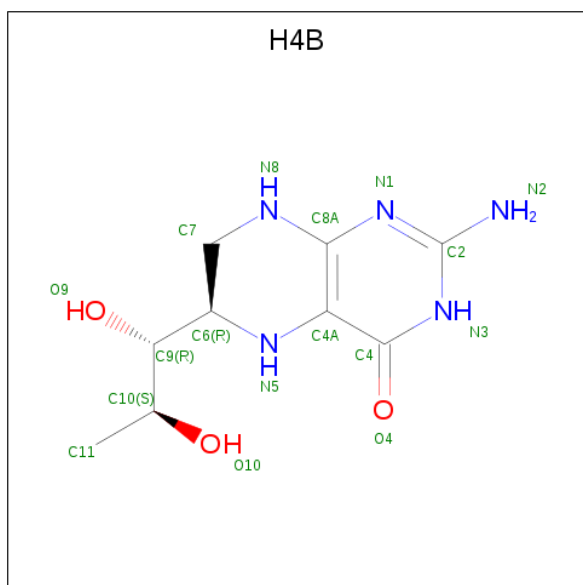
Chain	Residue	Modelled	Actual	Comment	Reference
A	354	ALA	ARG	engineered mutation	UNP P29475
A	357	ASP	GLY	engineered mutation	UNP P29475
B	354	ALA	ARG	engineered mutation	UNP P29475
B	357	ASP	GLY	engineered mutation	UNP P29475

- Molecule 2 is PROTOPORPHYRIN IX CONTAINING FE (three-letter code: HEM) (formula: $C_{34}H_{32}FeN_4O_4$).



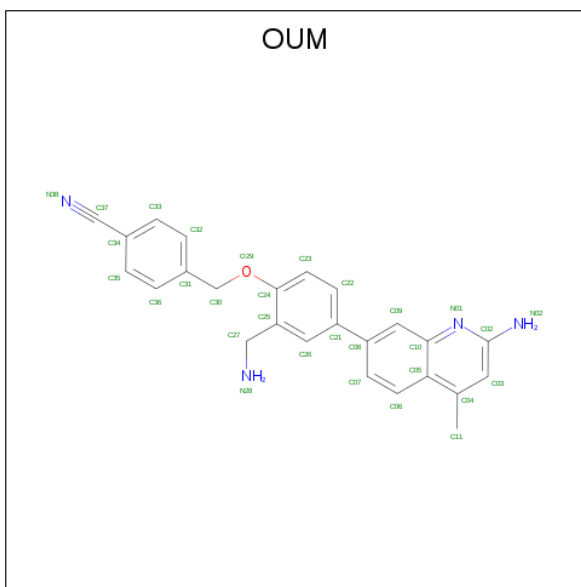
Mol	Chain	Residues	Atoms				ZeroOcc	AltConf
2	A	1	Total	C	Fe	N	O	
			43	34	1	4	4	
2	B	1	Total	C	Fe	N	O	
			43	34	1	4	4	

- Molecule 3 is 5,6,7,8-TETRAHYDROBIOPTERIN (three-letter code: H4B) (formula: $C_9H_{15}N_5O_3$).



Mol	Chain	Residues	Atoms				ZeroOcc	AltConf
3	A	1	Total	C	N	O		
			17	9	5	3		
3	B	1	Total	C	N	O		
			17	9	5	3		

- Molecule 4 is 4-{{2-(aminomethyl)-4-(2-amino-4-methylquinolin-7-yl)phenoxy)methyl}benzonitrile (three-letter code: OUM) (formula: $C_{25}H_{22}N_4O$) (labeled as "Ligand of Interest" by author).



Mol	Chain	Residues	Atoms				ZeroOcc	AltConf
4	A	1	Total	C	N	O	0	0
			30	25	4	1		
4	B	1	Total	C	N	O	0	0
			30	25	4	1		

- Molecule 5 is ZINC ION (three-letter code: ZN) (formula: Zn).

Mol	Chain	Residues	Atoms		ZeroOcc	AltConf
5	B	1	Total	Zn	0	0
			1	1		

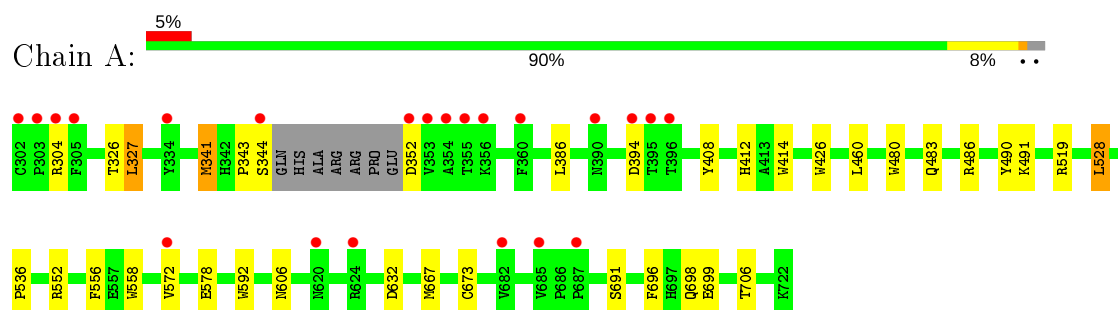
- Molecule 6 is water.

Mol	Chain	Residues	Atoms		ZeroOcc	AltConf
6	A	418	Total	O	0	0
			418	418		
6	B	327	Total	O	0	0
			327	327		

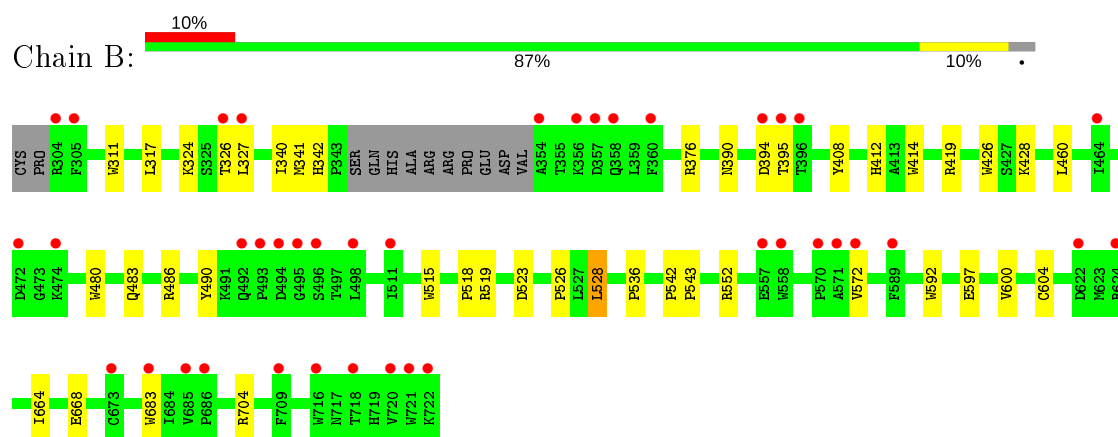
3 Residue-property plots [i](#)

These plots are drawn for all protein, RNA, DNA and oligosaccharide chains in the entry. The first graphic for a chain summarises the proportions of the various outlier classes displayed in the second graphic. The second graphic shows the sequence view annotated by issues in geometry and electron density. Residues are color-coded according to the number of geometric quality criteria for which they contain at least one outlier: green = 0, yellow = 1, orange = 2 and red = 3 or more. A red dot above a residue indicates a poor fit to the electron density ($RSRZ > 2$). Stretches of 2 or more consecutive residues without any outlier are shown as a green connector. Residues present in the sample, but not in the model, are shown in grey.

- Molecule 1: Nitric oxide synthase, brain



- Molecule 1: Nitric oxide synthase, brain



4 Data and refinement statistics

Property	Value	Source
Space group	P 21 21 21	Depositor
Cell constants a, b, c, α , β , γ	52.14Å 121.65Å 164.86Å 90.00° 90.00° 90.00°	Depositor
Resolution (Å)	38.49 – 1.90 38.49 – 1.90	Depositor EDS
% Data completeness (in resolution range)	99.8 (38.49-1.90) 99.8 (38.49-1.90)	Depositor EDS
R_{merge}	0.15	Depositor
R_{sym}	0.15	Depositor
$\langle I/\sigma(I) \rangle$ ¹	1.37 (at 1.89Å)	Xtriage
Refinement program	PHENIX (1.11.1-2575_1496: ???)	Depositor
R, R_{free}	0.175 , 0.214 0.175 , 0.214	Depositor DCC
R_{free} test set	4102 reflections (4.91%)	wwPDB-VP
Wilson B-factor (Å ²)	27.3	Xtriage
Anisotropy	0.943	Xtriage
Bulk solvent k_{sol} (e/Å ³), B_{sol} (Å ²)	0.34 , 50.9	EDS
L-test for twinning ²	$\langle L \rangle = 0.46$, $\langle L^2 \rangle = 0.28$	Xtriage
Estimated twinning fraction	No twinning to report.	Xtriage
F_o, F_c correlation	0.97	EDS
Total number of atoms	7678	wwPDB-VP
Average B, all atoms (Å ²)	41.0	wwPDB-VP

Xtriage's analysis on translational NCS is as follows: *The largest off-origin peak in the Patterson function is 4.37% of the height of the origin peak. No significant pseudotranslation is detected.*

¹Intensities estimated from amplitudes.

²Theoretical values of $\langle |L| \rangle$, $\langle L^2 \rangle$ for acentric reflections are 0.5, 0.333 respectively for untwinned datasets, and 0.375, 0.2 for perfectly twinned datasets.

5 Model quality ⓘ

5.1 Standard geometry ⓘ

Bond lengths and bond angles in the following residue types are not validated in this section: HEM, ZN, H4B, OUM

The Z score for a bond length (or angle) is the number of standard deviations the observed value is removed from the expected value. A bond length (or angle) with $|Z| > 5$ is considered an outlier worth inspection. RMSZ is the root-mean-square of all Z scores of the bond lengths (or angles).

Mol	Chain	Bond lengths		Bond angles	
		RMSZ	# Z >5	RMSZ	# Z >5
1	A	0.37	0/3511	0.53	0/4764
1	B	0.35	0/3464	0.51	0/4699
All	All	0.36	0/6975	0.52	0/9463

There are no bond length outliers.

There are no bond angle outliers.

There are no chirality outliers.

There are no planarity outliers.

5.2 Too-close contacts ⓘ

In the following table, the Non-H and H(model) columns list the number of non-hydrogen atoms and hydrogen atoms in the chain respectively. The H(added) column lists the number of hydrogen atoms added and optimized by MolProbity. The Clashes column lists the number of clashes within the asymmetric unit, whereas Symm-Clashes lists symmetry related clashes.

Mol	Chain	Non-H	H(model)	H(added)	Clashes	Symm-Clashes
1	A	3396	0	3310	18	0
1	B	3356	0	3270	24	0
2	A	43	0	30	3	0
2	B	43	0	30	1	0
3	A	17	0	15	0	0
3	B	17	0	15	0	0
4	A	30	0	0	3	0
4	B	30	0	0	3	0
5	B	1	0	0	0	0
6	A	418	0	0	2	0
6	B	327	0	0	2	0
All	All	7678	0	6670	44	0

The all-atom clashscore is defined as the number of clashes found per 1000 atoms (including hydrogen atoms). The all-atom clashscore for this structure is 3.

All (44) close contacts within the same asymmetric unit are listed below, sorted by their clash magnitude.

Atom-1	Atom-2	Interatomic distance (Å)	Clash overlap (Å)
1:B:572:VAL:HG21	4:B:804:OUM:C07	2.21	0.70
2:A:801:HEM:HHC	2:A:801:HEM:HBB2	1.74	0.70
2:B:802:HEM:HHC	2:B:802:HEM:HBB2	1.74	0.69
1:B:528:LEU:HD22	1:B:536:PRO:HB2	1.76	0.67
1:A:483:GLN:HB2	1:A:486:ARG:HG3	1.77	0.67
1:A:528:LEU:HD22	1:A:536:PRO:HB2	1.78	0.66
1:A:578:GLU:OE1	6:A:901:HOH:O	2.13	0.66
1:B:668[A]:GLU:OE1	6:B:901:HOH:O	2.14	0.65
1:A:572:VAL:HG21	4:A:803:OUM:C07	2.29	0.63
1:A:667:MET:HE1	1:A:698:GLN:HG2	1.80	0.63
1:B:483:GLN:HB2	1:B:486:ARG:HG3	1.82	0.62
1:A:326:THR:HG21	1:A:706:THR:HG22	1.85	0.58
1:B:704:ARG:HG2	1:B:704:ARG:HH11	1.69	0.57
1:B:664:ILE:O	1:B:668[B]:GLU:HG2	2.08	0.53
1:B:390:ASN:OD1	6:B:902:HOH:O	2.18	0.52
1:A:414:TRP:CE3	1:A:426:TRP:HA	2.44	0.52
1:A:460:LEU:HD12	1:A:592:TRP:HB3	1.95	0.48
1:B:600:VAL:O	1:B:604:CYS:HB2	2.13	0.48
1:A:592:TRP:O	4:A:803:OUM:N02	2.47	0.48
1:A:480:TRP:HB2	1:A:528:LEU:HB3	1.97	0.47
1:B:480:TRP:HB2	1:B:528:LEU:HB3	1.97	0.46
1:B:592:TRP:O	4:B:804:OUM:N02	2.49	0.46
1:B:515:TRP:CE2	1:B:526:PRO:HD3	2.52	0.45
2:A:801:HEM:HBD1	4:A:803:OUM:C22	2.48	0.44
1:B:327:LEU:HB2	1:B:704:ARG:HG2	1.99	0.44
2:A:801:HEM:CHC	2:A:801:HEM:HBB2	2.46	0.44
1:A:486:ARG:NE	6:A:906:HOH:O	2.40	0.44
1:A:699:GLU:HB3	1:B:340:ILE:HD13	1.99	0.44
1:A:408:TYR:CE1	1:A:412:HIS:CE1	3.06	0.43
1:B:414:TRP:CE3	1:B:426:TRP:HA	2.54	0.43
1:B:460:LEU:HD12	1:B:592:TRP:HB3	2.00	0.43
1:A:326:THR:OG1	1:A:327:LEU:HD22	2.18	0.43
1:B:542:PRO:HA	1:B:543:PRO:HD3	1.94	0.42
1:B:317:LEU:HD11	1:B:668[B]:GLU:OE1	2.19	0.42
1:B:490:TYR:CE1	1:B:519:ARG:HA	2.54	0.42
1:B:518:PRO:HG2	1:B:523:ASP:CG	2.39	0.42
1:A:556:PHE:HB3	1:A:558:TRP:CE2	2.54	0.42

Continued on next page...

Continued from previous page...

Atom-1	Atom-2	Interatomic distance (Å)	Clash overlap (Å)
1:A:341:MET:HG3	1:B:311:TRP:NE1	2.35	0.42
1:B:597:GLU:OE1	4:B:804:OUM:N01	2.53	0.42
1:B:341:MET:HG2	1:B:342[A]:HIS:CE1	2.55	0.41
1:B:408:TYR:CE1	1:B:412:HIS:CE1	3.09	0.41
1:A:691:SER:HA	1:A:696:PHE:CG	2.56	0.41
1:A:490:TYR:CE1	1:A:519:ARG:HA	2.56	0.41
1:B:419:ARG:HD3	1:B:683:TRP:CD2	2.56	0.41

There are no symmetry-related clashes.

5.3 Torsion angles [i](#)

5.3.1 Protein backbone [i](#)

In the following table, the Percentiles column shows the percent Ramachandran outliers of the chain as a percentile score with respect to all X-ray entries followed by that with respect to entries of similar resolution.

The Analysed column shows the number of residues for which the backbone conformation was analysed, and the total number of residues.

Mol	Chain	Analysed	Favoured	Allowed	Outliers	Percentiles	
1	A	416/421 (99%)	407 (98%)	8 (2%)	1 (0%)	47	38
1	B	409/421 (97%)	400 (98%)	9 (2%)	0	100	100
All	All	825/842 (98%)	807 (98%)	17 (2%)	1 (0%)	51	43

All (1) Ramachandran outliers are listed below:

Mol	Chain	Res	Type
1	A	343	PRO

5.3.2 Protein sidechains [i](#)

In the following table, the Percentiles column shows the percent sidechain outliers of the chain as a percentile score with respect to all X-ray entries followed by that with respect to entries of similar resolution.

The Analysed column shows the number of residues for which the sidechain conformation was analysed, and the total number of residues.

Mol	Chain	Analysed	Rotameric	Outliers	Percentiles	
1	A	376/376 (100%)	362 (96%)	14 (4%)	34	25
1	B	369/376 (98%)	361 (98%)	8 (2%)	52	47
All	All	745/752 (99%)	723 (97%)	22 (3%)	42	33

All (22) residues with a non-rotameric sidechain are listed below:

Mol	Chain	Res	Type
1	A	304	ARG
1	A	327	LEU
1	A	341	MET
1	A	344	SER
1	A	352	ASP
1	A	386	LEU
1	A	394	ASP
1	A	491	LYS
1	A	528	LEU
1	A	552	ARG
1	A	606	ASN
1	A	632	ASP
1	A	673[A]	CYS
1	A	673[B]	CYS
1	B	324	LYS
1	B	326	THR
1	B	376	ARG
1	B	394	ASP
1	B	395	THR
1	B	428	LYS
1	B	528	LEU
1	B	552	ARG

Some sidechains can be flipped to improve hydrogen bonding and reduce clashes. There are no such sidechains identified.

5.3.3 RNA ⓘ

There are no RNA molecules in this entry.

5.4 Non-standard residues in protein, DNA, RNA chains ⓘ

There are no non-standard protein/DNA/RNA residues in this entry.

5.5 Carbohydrates [i](#)

There are no monosaccharides in this entry.

5.6 Ligand geometry [i](#)

Of 7 ligands modelled in this entry, 1 is monoatomic - leaving 6 for Mogul analysis.

In the following table, the Counts columns list the number of bonds (or angles) for which Mogul statistics could be retrieved, the number of bonds (or angles) that are observed in the model and the number of bonds (or angles) that are defined in the Chemical Component Dictionary. The Link column lists molecule types, if any, to which the group is linked. The Z score for a bond length (or angle) is the number of standard deviations the observed value is removed from the expected value. A bond length (or angle) with $|Z| > 2$ is considered an outlier worth inspection. RMSZ is the root-mean-square of all Z scores of the bond lengths (or angles).

Mol	Type	Chain	Res	Link	Bond lengths			Bond angles		
					Counts	RMSZ	# $ Z > 2$	Counts	RMSZ	# $ Z > 2$
4	OUM	B	804	-	33,33,33	1.52	2 (6%)	45,46,46	1.80	12 (26%)
3	H4B	B	803	-	16,18,18	1.00	0	11,26,26	2.56	5 (45%)
2	HEM	A	801	1	27,50,50	1.92	4 (14%)	17,82,82	2.06	4 (23%)
4	OUM	A	803	-	33,33,33	1.50	3 (9%)	45,46,46	1.56	9 (20%)
2	HEM	B	802	1	27,50,50	1.99	4 (14%)	17,82,82	1.66	2 (11%)
3	H4B	A	802	-	16,18,18	0.77	0	11,26,26	2.43	6 (54%)

In the following table, the Chirals column lists the number of chiral outliers, the number of chiral centers analysed, the number of these observed in the model and the number defined in the Chemical Component Dictionary. Similar counts are reported in the Torsion and Rings columns. '-' means no outliers of that kind were identified.

Mol	Type	Chain	Res	Link	Chirals	Torsions	Rings
4	OUM	B	804	-	-	8/13/13/13	0/4/4/4
3	H4B	B	803	-	-	0/8/17/17	0/2/2/2
2	HEM	A	801	1	-	0/6/54/54	-
4	OUM	A	803	-	-	7/13/13/13	0/4/4/4
2	HEM	B	802	1	-	0/6/54/54	-
3	H4B	A	802	-	-	0/8/17/17	0/2/2/2

All (13) bond length outliers are listed below:

Mol	Chain	Res	Type	Atoms	Z	Observed(Å)	Ideal(Å)
4	A	803	OUM	C34-C37	-7.03	1.28	1.44
4	B	804	OUM	C34-C37	-7.00	1.29	1.44

Continued on next page...

Continued from previous page...

Mol	Chain	Res	Type	Atoms	Z	Observed(Å)	Ideal(Å)
2	A	801	HEM	C3B-C2B	-5.34	1.33	1.40
2	B	802	HEM	C3B-C2B	-5.16	1.33	1.40
2	A	801	HEM	C3C-C2C	-4.03	1.34	1.40
2	B	802	HEM	C3B-CAB	3.73	1.55	1.47
2	B	802	HEM	C3C-C2C	-3.61	1.35	1.40
2	B	802	HEM	C3C-CAC	3.56	1.55	1.47
2	A	801	HEM	C3B-CAB	3.50	1.55	1.47
2	A	801	HEM	C3C-CAC	3.45	1.54	1.47
4	B	804	OUM	C05-C10	-2.73	1.38	1.42
4	A	803	OUM	C05-C10	-2.22	1.38	1.42
4	A	803	OUM	C10-N01	-2.16	1.34	1.37

All (38) bond angle outliers are listed below:

Mol	Chain	Res	Type	Atoms	Z	Observed(°)	Ideal(°)
3	B	803	H4B	C4-C4A-C8A	6.23	120.11	114.57
2	A	801	HEM	CBA-CAA-C2A	-5.63	102.10	112.49
4	B	804	OUM	C05-C10-N01	-4.74	117.78	122.81
4	B	804	OUM	C04-C05-C10	4.71	120.56	118.01
4	A	803	OUM	C26-C21-C08	-4.62	113.22	120.86
2	B	802	HEM	CBA-CAA-C2A	-4.44	104.30	112.49
3	A	802	H4B	C4-C4A-C8A	4.34	118.42	114.57
4	A	803	OUM	C04-C05-C10	3.94	120.15	118.01
4	A	803	OUM	C22-C21-C08	3.57	127.55	121.36
3	A	802	H4B	C4-N3-C2	3.53	121.54	115.93
2	A	801	HEM	CBD-CAD-C3D	-3.50	106.02	112.48
4	B	804	OUM	O29-C24-C25	3.34	120.15	115.78
3	A	802	H4B	N3-C2-N1	-3.30	120.25	125.42
4	A	803	OUM	C05-C10-N01	-3.12	119.50	122.81
4	B	804	OUM	C26-C21-C08	-3.04	115.84	120.86
4	B	804	OUM	C30-O29-C24	2.98	123.63	117.76
4	B	804	OUM	C03-C04-C05	2.94	120.68	117.78
4	B	804	OUM	C07-C08-C21	-2.81	116.50	121.36
2	A	801	HEM	CMA-C3A-C4A	-2.69	124.33	128.46
4	B	804	OUM	C11-C04-C05	-2.63	117.01	121.08
3	B	803	H4B	C4-N3-C2	2.57	120.02	115.93
3	B	803	H4B	N3-C2-N1	-2.57	121.39	125.42
4	A	803	OUM	C08-C09-C10	-2.55	119.20	121.44
3	A	802	H4B	C2-N1-C8A	2.49	120.11	114.54
3	B	803	H4B	C2-N1-C8A	2.47	120.08	114.54
4	B	804	OUM	C22-C21-C08	2.43	125.56	121.36
2	B	802	HEM	CBD-CAD-C3D	-2.43	108.01	112.48

Continued on next page...

Continued from previous page...

Mol	Chain	Res	Type	Atoms	Z	Observed(°)	Ideal(°)
4	A	803	OUM	O29-C24-C25	2.34	118.83	115.78
4	B	804	OUM	C04-C03-C02	-2.34	117.16	119.72
4	A	803	OUM	C30-O29-C24	2.32	122.33	117.76
2	A	801	HEM	CMC-C2C-C3C	2.27	128.93	124.68
4	B	804	OUM	C06-C05-C04	-2.26	119.33	123.66
3	A	802	H4B	C4A-N5-C6	-2.20	115.18	121.16
4	B	804	OUM	C08-C09-C10	-2.10	119.60	121.44
3	B	803	H4B	N2-C2-N3	2.05	120.45	117.25
4	A	803	OUM	C06-C05-C04	-2.03	119.77	123.66
3	A	802	H4B	N2-C2-N3	2.02	120.40	117.25
4	A	803	OUM	C07-C06-C05	-2.02	118.32	121.13

There are no chirality outliers.

All (15) torsion outliers are listed below:

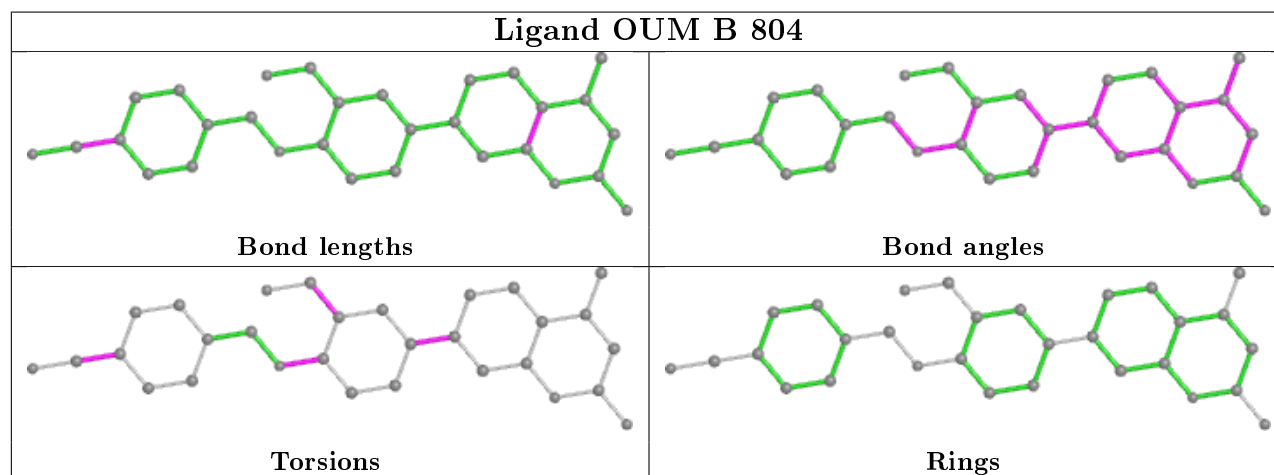
Mol	Chain	Res	Type	Atoms
4	A	803	OUM	C07-C08-C21-C26
4	A	803	OUM	C07-C08-C21-C22
4	B	804	OUM	C07-C08-C21-C26
4	A	803	OUM	C09-C08-C21-C26
4	B	804	OUM	C09-C08-C21-C26
4	A	803	OUM	C09-C08-C21-C22
4	B	804	OUM	C07-C08-C21-C22
4	B	804	OUM	C09-C08-C21-C22
4	B	804	OUM	C24-C25-C27-N28
4	A	803	OUM	C24-C25-C27-N28
4	B	804	OUM	C23-C24-O29-C30
4	B	804	OUM	C25-C24-O29-C30
4	A	803	OUM	C23-C24-O29-C30
4	A	803	OUM	C25-C24-O29-C30
4	B	804	OUM	C33-C34-C37-N38

There are no ring outliers.

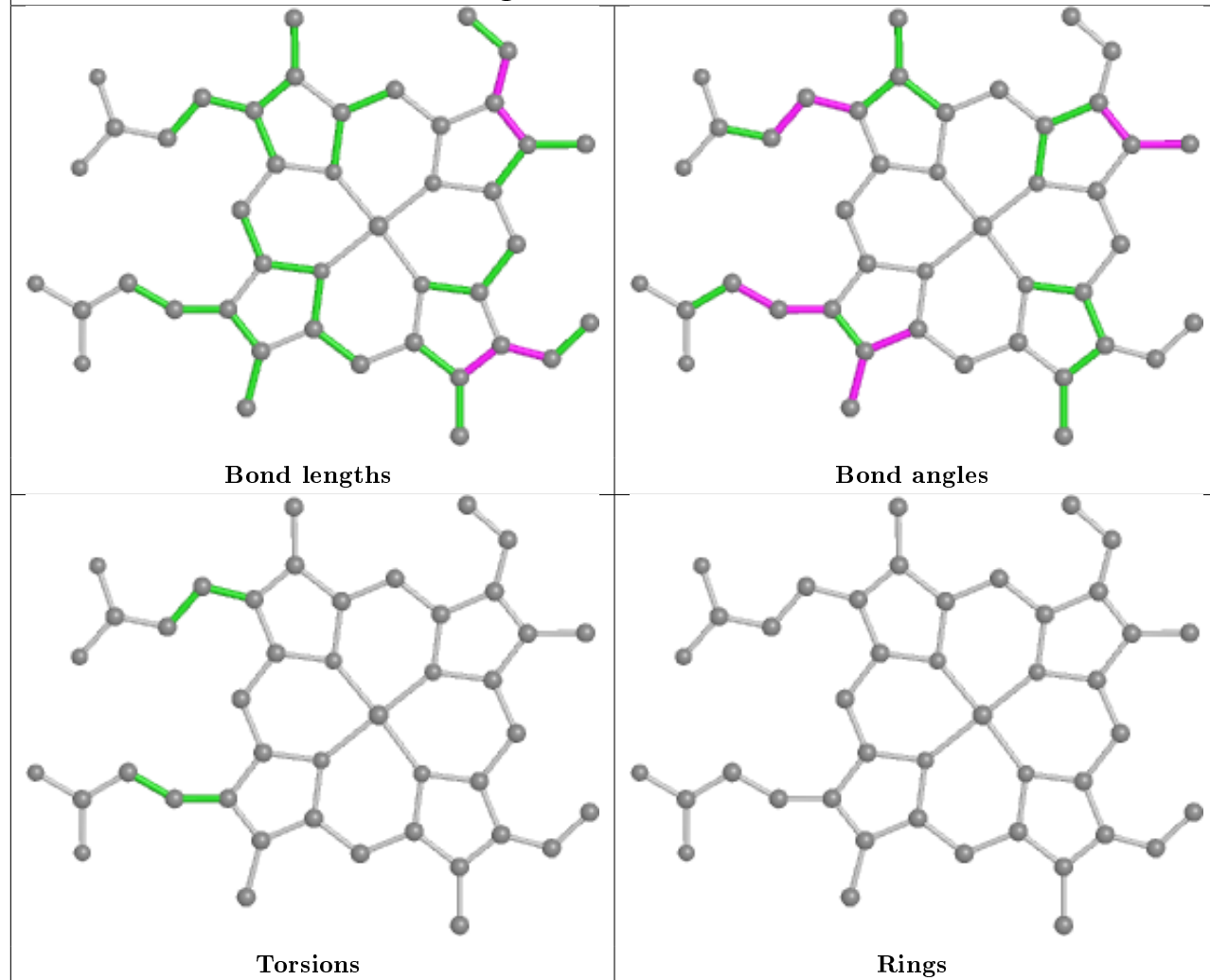
4 monomers are involved in 9 short contacts:

Mol	Chain	Res	Type	Clashes	Symm-Clashes
4	B	804	OUM	3	0
2	A	801	HEM	3	0
4	A	803	OUM	3	0
2	B	802	HEM	1	0

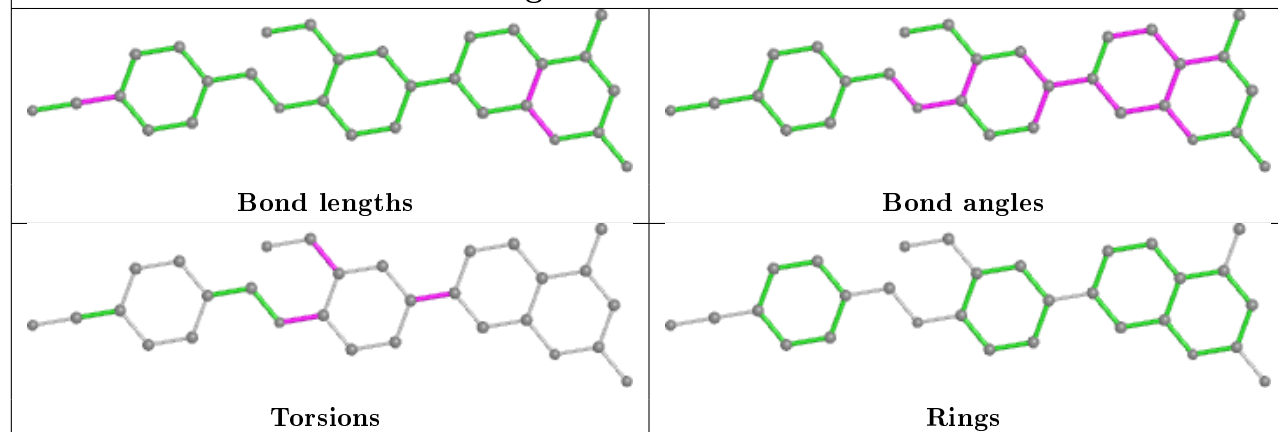
The following is a two-dimensional graphical depiction of Mogul quality analysis of bond lengths, bond angles, torsion angles, and ring geometry for all instances of the Ligand of Interest. In addition, ligands with molecular weight > 250 and outliers as shown on the validation Tables will also be included. For torsion angles, if less than 5% of the Mogul distribution of torsion angles is within 10 degrees of the torsion angle in question, then that torsion angle is considered an outlier. Any bond that is central to one or more torsion angles identified as an outlier by Mogul will be highlighted in the graph. For rings, the root-mean-square deviation (RMSD) between the ring in question and similar rings identified by Mogul is calculated over all ring torsion angles. If the average RMSD is greater than 60 degrees and the minimal RMSD between the ring in question and any Mogul-identified rings is also greater than 60 degrees, then that ring is considered an outlier. The outliers are highlighted in purple. The color gray indicates Mogul did not find sufficient equivalents in the CSD to analyse the geometry.

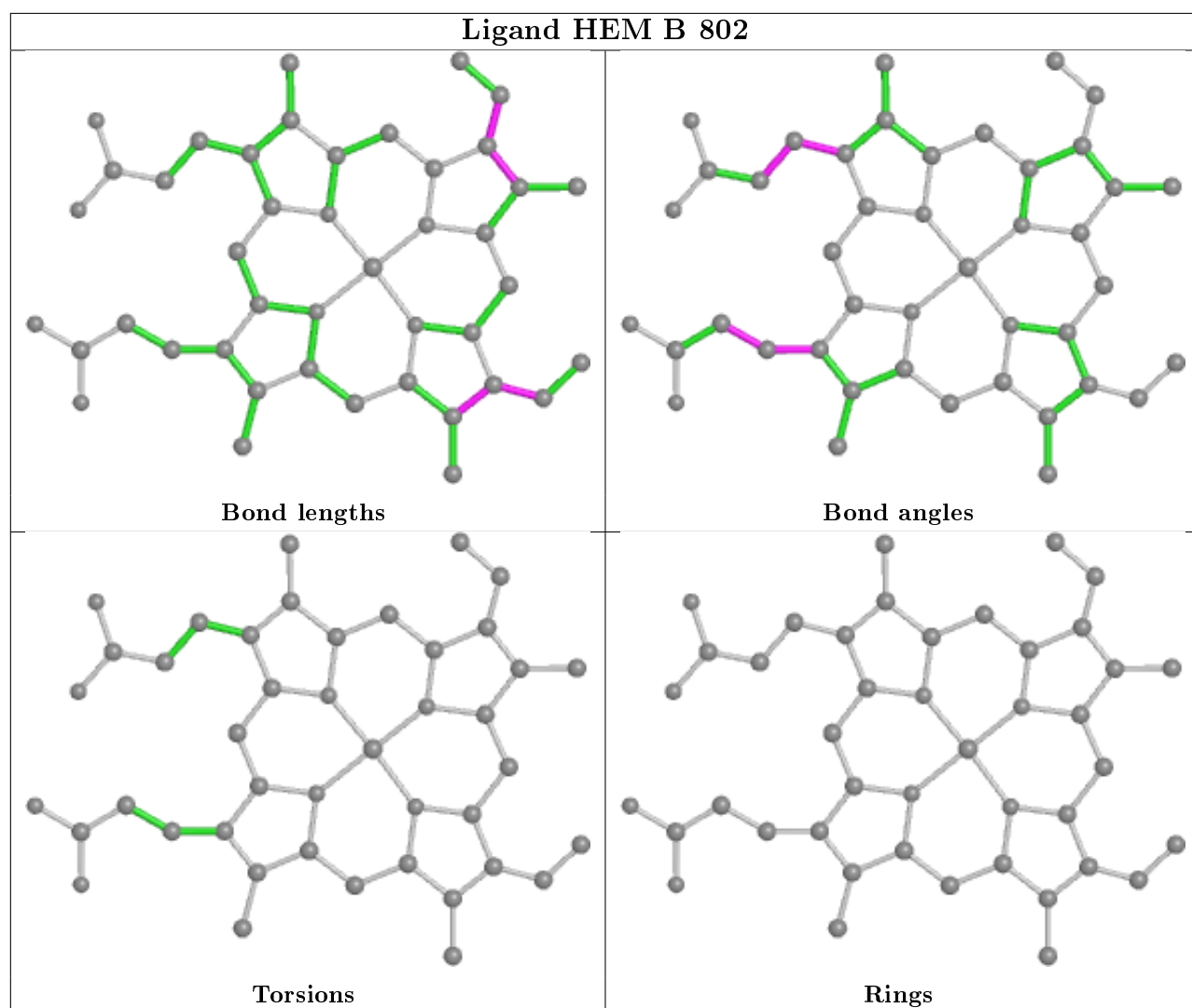


Ligand HEM A 801



Ligand OUM A 803





5.7 Other polymers [i](#)

There are no such residues in this entry.

5.8 Polymer linkage issues [i](#)

There are no chain breaks in this entry.

6 Fit of model and data ⓘ

6.1 Protein, DNA and RNA chains ⓘ

In the following table, the column labelled ‘#RSRZ> 2’ contains the number (and percentage) of RSRZ outliers, followed by percent RSRZ outliers for the chain as percentile scores relative to all X-ray entries and entries of similar resolution. The OWAB column contains the minimum, median, 95th percentile and maximum values of the occupancy-weighted average B-factor per residue. The column labelled ‘Q< 0.9’ lists the number of (and percentage) of residues with an average occupancy less than 0.9.

Mol	Chain	Analysed	<RSRZ>	#RSRZ>2	OWAB(Å ²)	Q<0.9
1	A	414/421 (98%)	0.15	22 (5%) 26 29	20, 33, 65, 100	0
1	B	409/421 (97%)	0.52	40 (9%) 7 8	23, 39, 76, 97	0
All	All	823/842 (97%)	0.33	62 (7%) 14 15	20, 36, 73, 100	0

All (62) RSRZ outliers are listed below:

Mol	Chain	Res	Type	RSRZ
1	B	720	VAL	7.1
1	B	721	TRP	6.4
1	B	357	ASP	5.6
1	B	493	PRO	5.2
1	B	360	PHE	5.1
1	B	326	THR	4.3
1	A	302	CYS	4.2
1	A	353	VAL	4.2
1	B	624	ARG	4.1
1	A	304	ARG	3.9
1	B	722	LYS	3.9
1	B	305	PHE	3.7
1	A	344	SER	3.4
1	A	305	PHE	3.3
1	B	496	SER	3.3
1	B	395	THR	3.2
1	B	304	ARG	3.2
1	B	718	THR	3.1
1	B	571	ALA	3.1
1	B	358	GLN	3.1
1	B	683	TRP	3.0
1	A	352	ASP	3.0
1	A	303	PRO	2.9
1	B	495	GLY	2.9

Continued on next page...

Continued from previous page...

Mol	Chain	Res	Type	RSRZ
1	B	589	PHE	2.8
1	B	572	VAL	2.8
1	B	557	GLU	2.8
1	A	355	THR	2.8
1	A	360	PHE	2.8
1	A	620	ASN	2.7
1	B	498	LEU	2.7
1	A	624	ARG	2.6
1	B	354	ALA	2.6
1	A	685	VAL	2.6
1	A	354	ALA	2.5
1	B	356	LYS	2.5
1	B	686	PRO	2.5
1	B	494	ASP	2.5
1	A	395	THR	2.5
1	A	396	THR	2.5
1	B	716	TRP	2.4
1	B	327	LEU	2.4
1	B	685	VAL	2.4
1	A	682	VAL	2.3
1	A	687	PRO	2.3
1	B	396	THR	2.3
1	A	572	VAL	2.2
1	B	511	ILE	2.2
1	A	394	ASP	2.2
1	A	356	LYS	2.2
1	B	394	ASP	2.2
1	B	622	ASP	2.2
1	B	472	ASP	2.2
1	B	570	PRO	2.1
1	B	474	LYS	2.1
1	B	464	ILE	2.1
1	A	334	TYR	2.1
1	A	390	ASN	2.1
1	B	673	CYS	2.1
1	B	492	GLN	2.0
1	B	558	TRP	2.0
1	B	709	PHE	2.0

6.2 Non-standard residues in protein, DNA, RNA chains ⓘ

There are no non-standard protein/DNA/RNA residues in this entry.

6.3 Carbohydrates [i](#)

There are no monosaccharides in this entry.

6.4 Ligands [i](#)

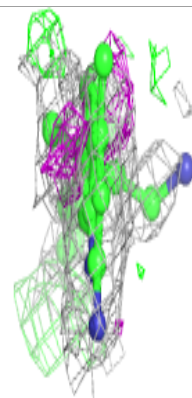
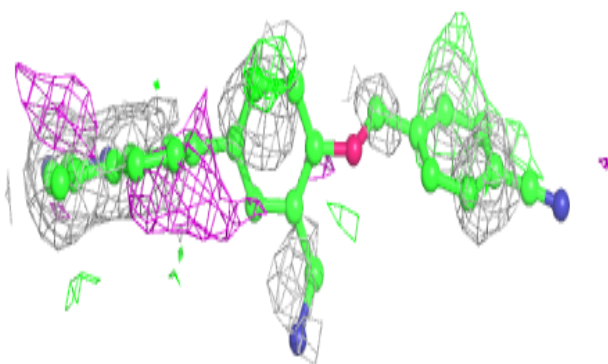
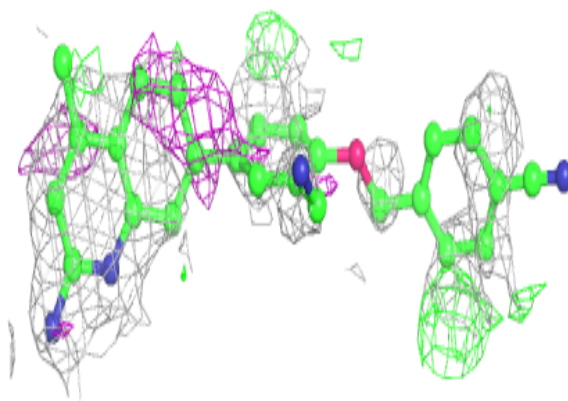
In the following table, the Atoms column lists the number of modelled atoms in the group and the number defined in the chemical component dictionary. The B-factors column lists the minimum, median, 95th percentile and maximum values of B factors of atoms in the group. The column labelled 'Q< 0.9' lists the number of atoms with occupancy less than 0.9.

Mol	Type	Chain	Res	Atoms	RSCC	RSR	B-factors(\AA^2)	Q<0.9
4	OUM	B	804	30/30	0.81	0.41	29,102,122,124	0
4	OUM	A	803	30/30	0.81	0.35	29,83,110,112	0
3	H4B	B	803	17/17	0.96	0.14	23,31,42,42	0
2	HEM	B	802	43/43	0.97	0.18	22,30,44,51	0
3	H4B	A	802	17/17	0.97	0.10	25,30,35,35	0
2	HEM	A	801	43/43	0.98	0.16	18,27,33,39	0
5	ZN	B	801	1/1	0.99	0.07	30,30,30,30	0

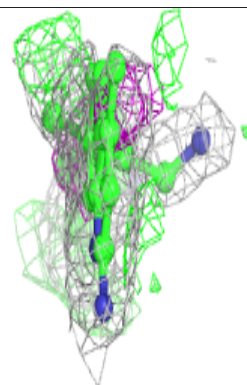
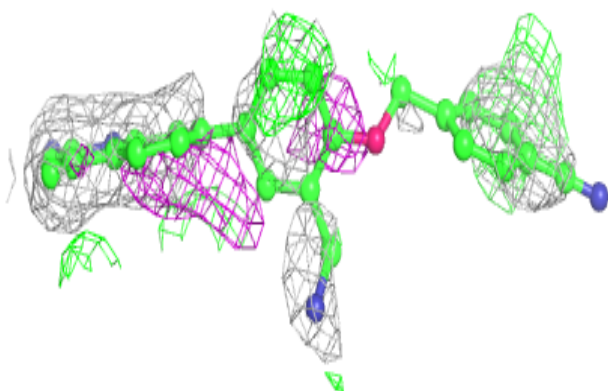
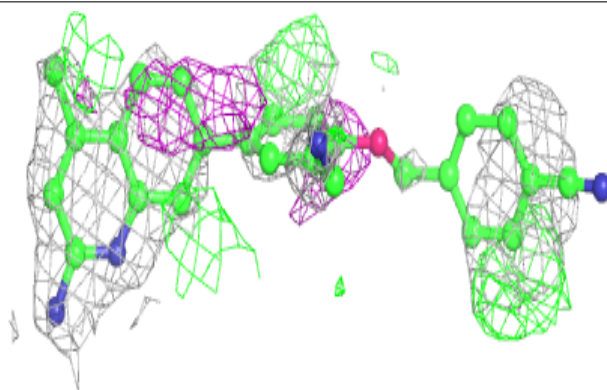
The following is a graphical depiction of the model fit to experimental electron density of all instances of the Ligand of Interest. In addition, ligands with molecular weight > 250 and outliers as shown on the geometry validation Tables will also be included. Each fit is shown from different orientation to approximate a three-dimensional view.

Electron density around OUM B 804:

$2mF_o-DF_c$ (at 0.7 rmsd) in gray
 mF_o-DF_c (at 3 rmsd) in purple (negative)
and green (positive)

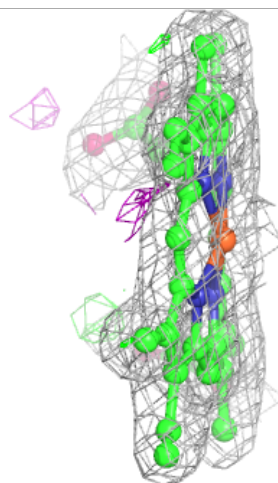
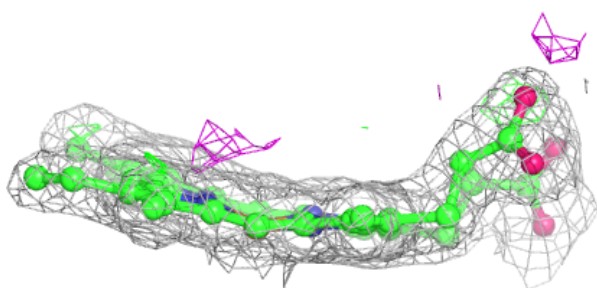
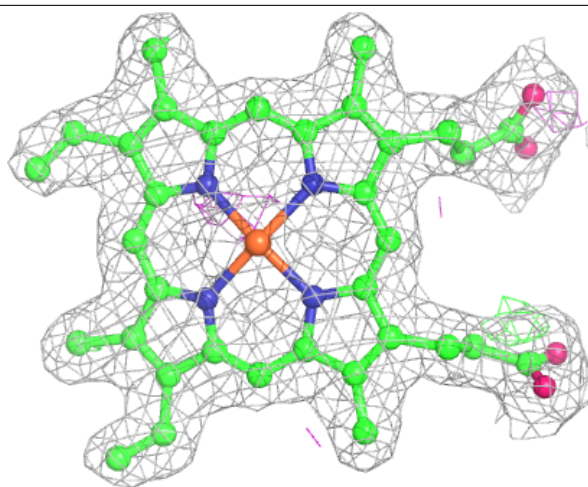
**Electron density around OUM A 803:**

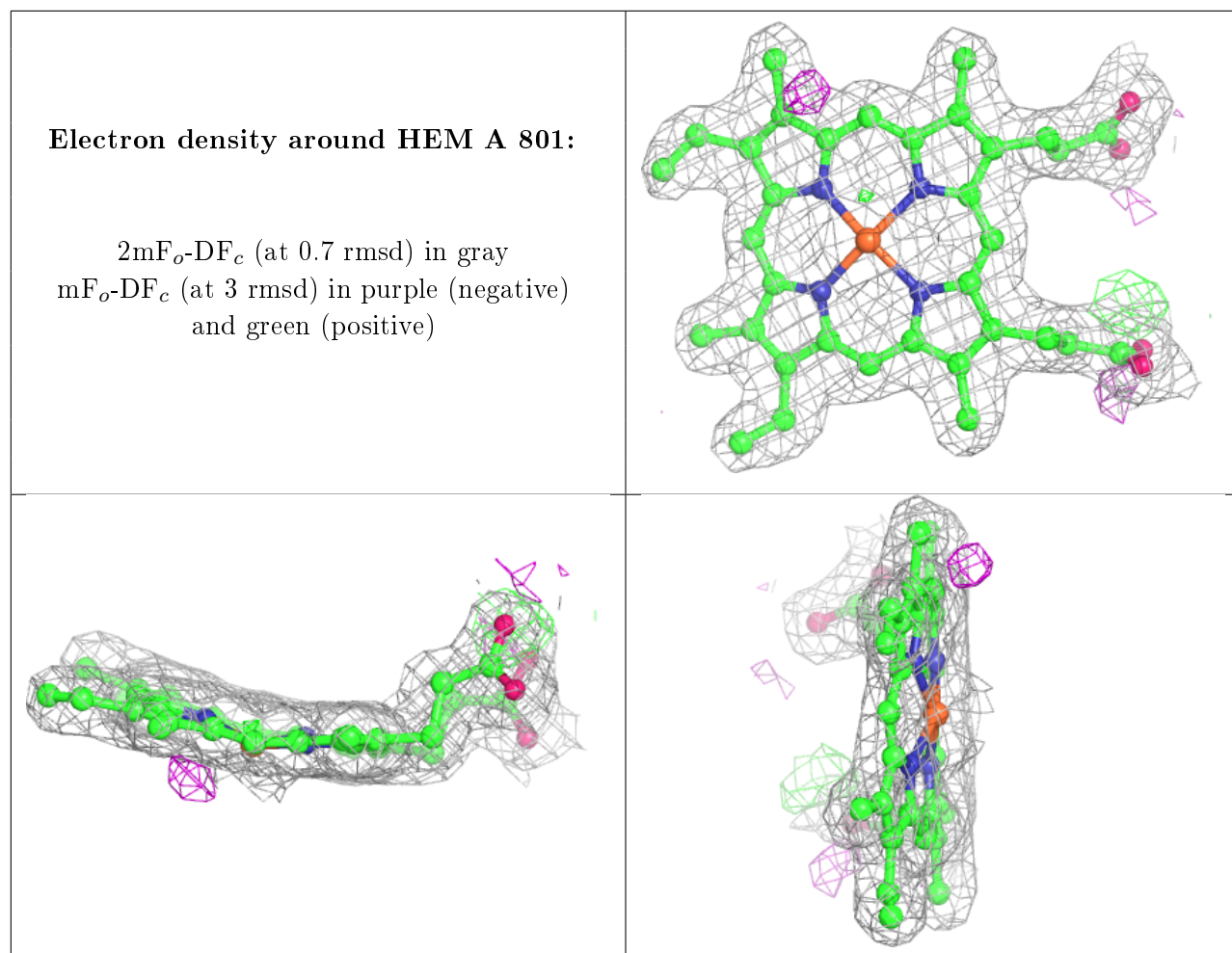
$2mF_o-DF_c$ (at 0.7 rmsd) in gray
 mF_o-DF_c (at 3 rmsd) in purple (negative)
and green (positive)



Electron density around HEM B 802:

$2mF_o-DF_c$ (at 0.7 rmsd) in gray
 mF_o-DF_c (at 3 rmsd) in purple (negative)
and green (positive)





6.5 Other polymers [i](#)

There are no such residues in this entry.