



Full wwPDB EM Validation Report ⓘ

Nov 12, 2022 – 12:58 PM EST

PDB ID : 6PPO
EMDB ID : EMD-20443
Title : Rhinovirus C15 complexed with domain I of receptor CDHR3
Authors : Sun, Y.; Watters, K.; Klose, T.; Palmenberg, A.C.
Deposited on : 2019-07-08
Resolution : 3.20 Å(reported)
Based on initial model : 5K0U

This is a Full wwPDB EM Validation Report for a publicly released PDB entry.

We welcome your comments at validation@mail.wwpdb.org

A user guide is available at

<https://www.wwpdb.org/validation/2017/EMValidationReportHelp>
with specific help available everywhere you see the ⓘ symbol.

The types of validation reports are described at

<http://www.wwpdb.org/validation/2017/FAQs#types>.

The following versions of software and data (see [references ⓘ](#)) were used in the production of this report:

EMDB validation analysis : 0.0.1.dev43
MolProbity : 4.02b-467
Percentile statistics : 20191225.v01 (using entries in the PDB archive December 25th 2019)
MapQ : 1.9.9
Ideal geometry (proteins) : Engh & Huber (2001)
Ideal geometry (DNA, RNA) : Parkinson et al. (1996)
Validation Pipeline (wwPDB-VP) : 2.31.2

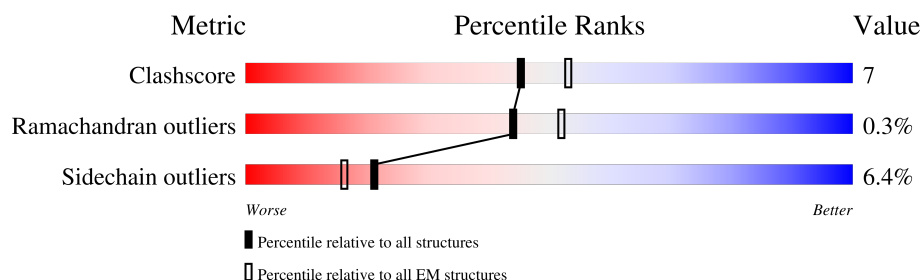
1 Overall quality at a glance

The following experimental techniques were used to determine the structure:

ELECTRON MICROSCOPY

The reported resolution of this entry is 3.20 Å.

Percentile scores (ranging between 0-100) for global validation metrics of the entry are shown in the following graphic. The table shows the number of entries on which the scores are based.



Metric	Whole archive (#Entries)	EM structures (#Entries)
Clashscore	158937	4297
Ramachandran outliers	154571	4023
Sidechain outliers	154315	3826

The table below summarises the geometric issues observed across the polymeric chains and their fit to the map. The red, orange, yellow and green segments of the bar indicate the fraction of residues that contain outliers for ≥ 3 , 2, 1 and 0 types of geometric quality criteria respectively. A grey segment represents the fraction of residues that are not modelled. The numeric value for each fraction is indicated below the corresponding segment, with a dot representing fractions $\leq 5\%$. The upper red bar (where present) indicates the fraction of residues that have poor fit to the EM map (all-atom inclusion $< 40\%$). The numeric value is given above the bar.

Mol	Chain	Length	Quality of chain
1	A	279	
2	B	235	
3	C	265	
4	D	66	
5	U	132	

2 Entry composition

There are 6 unique types of molecules in this entry. The entry contains 6902 atoms, of which 0 are hydrogens and 0 are deuteriums.

In the tables below, the AltConf column contains the number of residues with at least one atom in alternate conformation and the Trace column contains the number of residues modelled with at most 2 atoms.

- Molecule 1 is a protein called Capsid protein VP1.

Mol	Chain	Residues	Atoms					AltConf	Trace
1	A	261	Total	C	N	O	S	0	0
			2100	1341	359	392	8		

There is a discrepancy between the modelled and reference sequences:

Chain	Residue	Modelled	Actual	Comment	Reference
A	125	LYS	THR	variant	UNP E5D8F2

- Molecule 2 is a protein called Capsid protein VP3.

Mol	Chain	Residues	Atoms					AltConf	Trace
2	B	235	Total	C	N	O	S	0	0
			1816	1163	300	336	17		

- Molecule 3 is a protein called Capsid protein VP2.

Mol	Chain	Residues	Atoms					AltConf	Trace
3	C	253	Total	C	N	O	S	0	0
			1959	1239	340	371	9		

- Molecule 4 is a protein called Capsid protein VP4.

Mol	Chain	Residues	Atoms				AltConf	Trace
4	D	25	Total	C	N	O	0	0
			196	123	33	40		

- Molecule 5 is a protein called Cadherin-related family member 3.

Mol	Chain	Residues	Atoms					AltConf	Trace
5	U	108	Total	C	N	O	S	0	0
			828	534	131	162	1		

There are 21 discrepancies between the modelled and reference sequences:

Chain	Residue	Modelled	Actual	Comment	Reference
U	9	MET	-	expression tag	UNP Q6ZTQ4
U	10	ALA	-	expression tag	UNP Q6ZTQ4
U	11	SER	-	expression tag	UNP Q6ZTQ4
U	12	ASP	-	expression tag	UNP Q6ZTQ4
U	13	TYR	-	expression tag	UNP Q6ZTQ4
U	14	LYS	-	expression tag	UNP Q6ZTQ4
U	15	ASP	-	expression tag	UNP Q6ZTQ4
U	16	ASP	-	expression tag	UNP Q6ZTQ4
U	17	ASP	-	expression tag	UNP Q6ZTQ4
U	18	ASP	-	expression tag	UNP Q6ZTQ4
U	19	LYS	-	expression tag	UNP Q6ZTQ4
U	131	GLY	-	expression tag	UNP Q6ZTQ4
U	132	GLY	-	expression tag	UNP Q6ZTQ4
U	133	THR	-	expression tag	UNP Q6ZTQ4
U	134	LYS	-	expression tag	UNP Q6ZTQ4
U	135	HIS	-	expression tag	UNP Q6ZTQ4
U	136	HIS	-	expression tag	UNP Q6ZTQ4
U	137	HIS	-	expression tag	UNP Q6ZTQ4
U	138	HIS	-	expression tag	UNP Q6ZTQ4
U	139	HIS	-	expression tag	UNP Q6ZTQ4
U	140	HIS	-	expression tag	UNP Q6ZTQ4

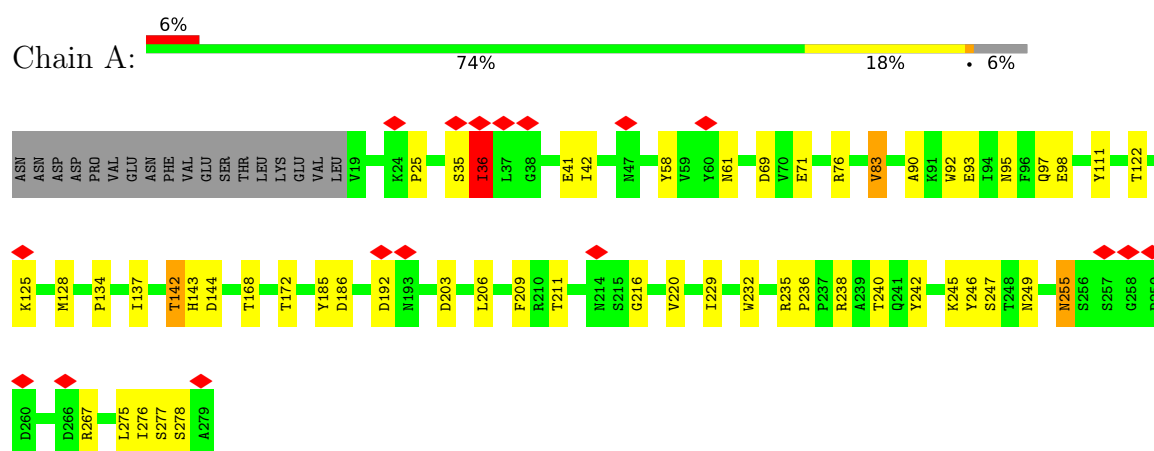
- Molecule 6 is CALCIUM ION (three-letter code: CA) (formula: Ca).

Mol	Chain	Residues	Atoms		AltConf
6	U	3	Total 3	Ca 3	0

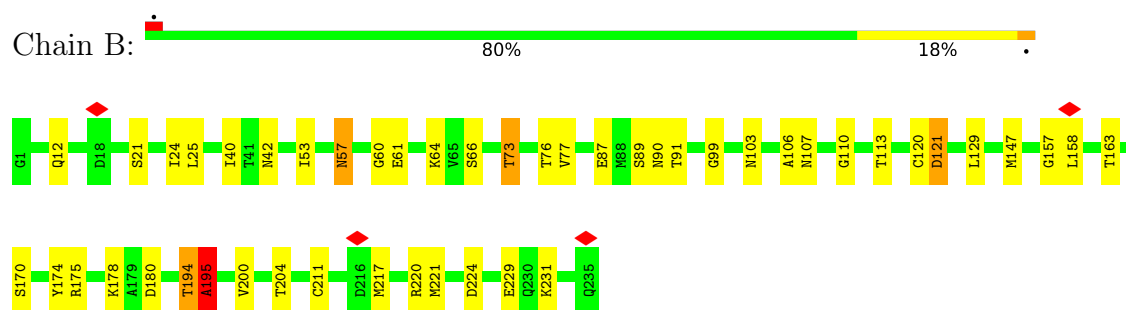
3 Residue-property plots

These plots are drawn for all protein, RNA, DNA and oligosaccharide chains in the entry. The first graphic for a chain summarises the proportions of the various outlier classes displayed in the second graphic. The second graphic shows the sequence view annotated by issues in geometry and atom inclusion in map density. Residues are color-coded according to the number of geometric quality criteria for which they contain at least one outlier: green = 0, yellow = 1, orange = 2 and red = 3 or more. A red diamond above a residue indicates a poor fit to the EM map for this residue (all-atom inclusion < 40%). Stretches of 2 or more consecutive residues without any outlier are shown as a green connector. Residues present in the sample, but not in the model, are shown in grey.

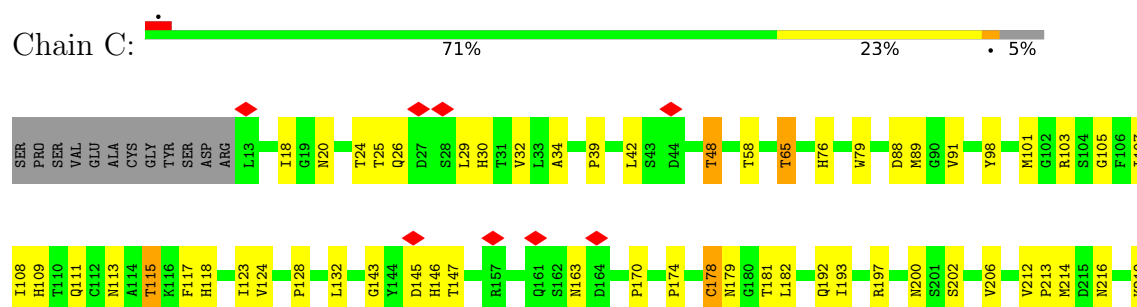
• Molecule 1: Capsid protein VP1



• Molecule 2: Capsid protein VP3

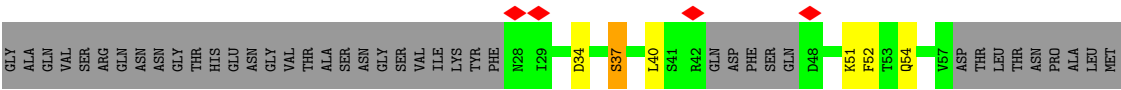


• Molecule 3: Capsid protein VP2

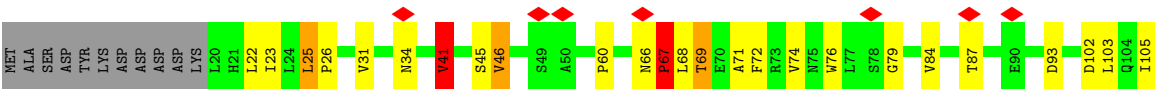




• Molecule 4: Capsid protein VP4



• Molecule 5: Cadherin-related family member 3



4 Experimental information

Property	Value	Source
EM reconstruction method	SINGLE PARTICLE	Depositor
Imposed symmetry	POINT, Not provided	
Number of particles used	14978	Depositor
Resolution determination method	FSC 0.143 CUT-OFF	Depositor
CTF correction method	PHASE FLIPPING AND AMPLITUDE CORRECTION	Depositor
Microscope	FEI TITAN KRIOS	Depositor
Voltage (kV)	300	Depositor
Electron dose ($e^-/\text{\AA}^2$)	32	Depositor
Minimum defocus (nm)	1000	Depositor
Maximum defocus (nm)	3000	Depositor
Magnification	81000	Depositor
Image detector	GATAN K2 SUMMIT (4k x 4k)	Depositor
Maximum map value	16.926	Depositor
Minimum map value	-12.062	Depositor
Average map value	0.053	Depositor
Map value standard deviation	0.969	Depositor
Recommended contour level	3.5	Depositor
Map size (\AA)	498.24, 498.24, 498.24	wwPDB
Map dimensions	576, 576, 576	wwPDB
Map angles ($^\circ$)	90.0, 90.0, 90.0	wwPDB
Pixel spacing (\AA)	0.865, 0.865, 0.865	Depositor

5 Model quality

5.1 Standard geometry

Bond lengths and bond angles in the following residue types are not validated in this section: CA

The Z score for a bond length (or angle) is the number of standard deviations the observed value is removed from the expected value. A bond length (or angle) with $|Z| > 5$ is considered an outlier worth inspection. RMSZ is the root-mean-square of all Z scores of the bond lengths (or angles).

Mol	Chain	Bond lengths		Bond angles	
		RMSZ	$\# Z > 5$	RMSZ	$\# Z > 5$
1	A	0.54	5/2166 (0.2%)	0.72	7/2945 (0.2%)
2	B	0.39	0/1862	0.61	3/2532 (0.1%)
3	C	0.38	0/2013	0.70	5/2749 (0.2%)
4	D	0.32	0/199	0.52	0/267
5	U	0.38	0/847	1.07	10/1163 (0.9%)
All	All	0.44	5/7087 (0.1%)	0.74	25/9656 (0.3%)

Chiral center outliers are detected by calculating the chiral volume of a chiral center and verifying if the center is modelled as a planar moiety or with the opposite hand. A planarity outlier is detected by checking planarity of atoms in a peptide group, atoms in a mainchain group or atoms of a sidechain that are expected to be planar.

Mol	Chain	#Chirality outliers	#Planarity outliers
1	A	0	1
3	C	0	1
5	U	0	2
All	All	0	4

All (5) bond length outliers are listed below:

Mol	Chain	Res	Type	Atoms	Z	Observed(Å)	Ideal(Å)
1	A	278	SER	C-N	-9.28	1.12	1.34
1	A	36	ILE	C-N	-7.71	1.16	1.34
1	A	277	SER	C-N	-6.98	1.18	1.34
1	A	246	TYR	C-N	6.43	1.48	1.34
1	A	247	SER	C-N	5.33	1.46	1.34

All (25) bond angle outliers are listed below:

Mol	Chain	Res	Type	Atoms	Z	Observed(°)	Ideal(°)
5	U	25	LEU	C-N-CD	-16.18	85.01	120.60
3	C	178	CYS	O-C-N	-11.95	103.59	122.70
5	U	25	LEU	N-CA-C	-11.93	78.79	111.00
1	A	36	ILE	O-C-N	-10.96	105.17	122.70
1	A	278	SER	O-C-N	-10.92	105.22	122.70
5	U	25	LEU	C-N-CA	9.88	163.48	122.00
5	U	93	ASP	N-CA-C	-9.47	85.43	111.00
3	C	178	CYS	C-N-CA	9.03	144.28	121.70
1	A	278	SER	CA-C-N	8.49	135.87	117.20
3	C	178	CYS	CA-C-N	7.97	134.73	117.20
1	A	35	SER	C-N-CA	7.75	141.06	121.70
3	C	179	ASN	O-C-N	-7.65	110.19	123.20
3	C	179	ASN	CA-C-N	7.31	130.82	116.20
1	A	36	ILE	CA-C-N	6.91	132.40	117.20
2	B	57	ASN	N-CA-C	-6.60	93.17	111.00
1	A	35	SER	O-C-N	-6.52	112.26	122.70
5	U	106	TYR	N-CA-C	-6.43	93.64	111.00
5	U	41	VAL	CB-CA-C	-6.31	99.41	111.40
5	U	34	ASN	N-CA-C	-6.26	94.10	111.00
5	U	67	PRO	C-N-CA	6.00	136.70	121.70
2	B	195	ALA	CB-CA-C	5.52	118.38	110.10
2	B	194	THR	CB-CA-C	-5.21	97.52	111.60
5	U	69	THR	N-CA-CB	5.12	120.02	110.30
5	U	67	PRO	CB-CA-C	-5.08	99.29	112.00
1	A	277	SER	O-C-N	-5.02	114.67	122.70

There are no chirality outliers.

All (4) planarity outliers are listed below:

Mol	Chain	Res	Type	Group
1	A	36	ILE	Mainchain
3	C	178	CYS	Mainchain
5	U	41	VAL	Mainchain
5	U	67	PRO	Peptide

5.2 Too-close contacts ⓘ

In the following table, the Non-H and H(model) columns list the number of non-hydrogen atoms and hydrogen atoms in the chain respectively. The H(added) column lists the number of hydrogen atoms added and optimized by MolProbity. The Clashes column lists the number of clashes within the asymmetric unit, whereas Symm-Clashes lists symmetry-related clashes.

Mol	Chain	Non-H	H(model)	H(added)	Clashes	Symm-Clashes
1	A	2100	0	2019	32	0
2	B	1816	0	1821	25	0
3	C	1959	0	1903	33	0
4	D	196	0	188	2	0
5	U	828	0	823	15	0
6	U	3	0	0	1	0
All	All	6902	0	6754	91	0

The all-atom clashscore is defined as the number of clashes found per 1000 atoms (including hydrogen atoms). The all-atom clashscore for this structure is 7.

All (91) close contacts within the same asymmetric unit are listed below, sorted by their clash magnitude.

Atom-1	Atom-2	Interatomic distance (Å)	Clash overlap (Å)
5:U:127:ASN:OD1	6:U:203:CA:CA	1.60	0.78
1:A:36:ILE:HD12	2:B:163:THR:O	1.93	0.69
5:U:71:ALA:HA	5:U:87:THR:HG22	1.75	0.67
5:U:60:PRO:HA	5:U:106:TYR:O	1.98	0.63
3:C:18:ILE:HD11	3:C:107:ILE:HD12	1.84	0.60
1:A:42:ILE:HG22	3:C:29:LEU:HB3	1.84	0.60
3:C:109:HIS:HD2	3:C:111:GLN:HE21	1.50	0.59
3:C:113:ASN:HB3	3:C:200:ASN:HD22	1.68	0.58
5:U:72:PHE:O	5:U:84:VAL:HG13	2.03	0.58
3:C:115:THR:OG1	3:C:118:HIS:ND1	2.35	0.58
1:A:111:TYR:HB2	1:A:232:TRP:HB2	1.85	0.56
1:A:93:GLU:O	1:A:95:ASN:ND2	2.38	0.56
1:A:125:LYS:H	1:A:216:GLY:HA3	1.71	0.56
3:C:115:THR:HB	3:C:117:PHE:H	1.71	0.55
1:A:236:PRO:HB2	3:C:181:THR:HB	1.87	0.54
2:B:60:GLY:O	2:B:64:LYS:NZ	2.40	0.54
2:B:121:ASP:O	3:C:197:ARG:NH2	2.40	0.54
5:U:76:TRP:NE1	5:U:79:GLY:O	2.37	0.54
1:A:69:ASP:HA	2:B:42:ASN:HA	1.90	0.54
2:B:107:ASN:HD22	2:B:220:ARG:HE	1.56	0.53
2:B:87:GLU:HB2	2:B:90:ASN:HB2	1.90	0.53
3:C:146:HIS:HB3	3:C:170:PRO:HD3	1.91	0.53
1:A:128:MET:HG2	1:A:211:THR:HG22	1.90	0.52
2:B:121:ASP:OD1	2:B:121:ASP:N	2.38	0.52
2:B:53:ILE:HD11	2:B:211:CYS:HB3	1.91	0.52
5:U:25:LEU:HD21	5:U:105:ILE:HD12	1.92	0.52
1:A:238:ARG:NH1	1:A:249:ASN:O	2.43	0.52
2:B:99:GLY:O	2:B:103:ASN:ND2	2.36	0.52

Continued on next page...

Continued from previous page...

Atom-1	Atom-2	Interatomic distance (Å)	Clash overlap (Å)
2:B:157:GLY:HA2	3:C:197:ARG:HH11	1.74	0.52
1:A:203:ASP:OD1	1:A:203:ASP:N	2.43	0.51
3:C:216:ASN:HD22	3:C:219:LYS:HD3	1.75	0.51
3:C:32:VAL:HG23	3:C:192:GLN:HE21	1.76	0.51
2:B:120:CYS:O	3:C:197:ARG:HB2	2.10	0.50
3:C:48:THR:HG22	3:C:213:PRO:HG2	1.93	0.50
2:B:24:ILE:HG23	2:B:25:LEU:HG	1.93	0.50
3:C:260:MET:SD	3:C:263:GLN:NE2	2.84	0.50
1:A:25:PRO:HD3	1:A:58:TYR:HD1	1.77	0.50
1:A:242:TYR:O	1:A:267:ARG:NH2	2.45	0.50
3:C:132:LEU:HD12	3:C:147:THR:HG22	1.94	0.49
1:A:235:ARG:NH2	3:C:128:PRO:O	2.44	0.49
1:A:275:LEU:HD13	5:U:23:ILE:HD13	1.94	0.49
2:B:180:ASP:OD1	2:B:180:ASP:N	2.45	0.49
5:U:74:VAL:HG22	5:U:84:VAL:HG22	1.94	0.49
3:C:101:MET:HB3	3:C:214:MET:HB3	1.95	0.49
5:U:22:LEU:HD13	5:U:25:LEU:HD23	1.95	0.49
1:A:192:ASP:OD1	1:A:192:ASP:N	2.47	0.48
1:A:71:GLU:HA	1:A:229:ILE:HD12	1.96	0.47
2:B:170:SER:HB2	2:B:175:ARG:HH11	1.79	0.47
2:B:61:GLU:OE1	2:B:66:SER:OG	2.32	0.47
1:A:41:GLU:HA	3:C:193:ILE:HB	1.96	0.46
3:C:88:ASP:N	3:C:88:ASP:OD1	2.48	0.46
5:U:66:ASN:HB2	5:U:102:ASP:HB2	1.96	0.46
3:C:76:HIS:HB3	3:C:174:PRO:HG3	1.98	0.46
5:U:45:SER:OG	5:U:46:VAL:N	2.48	0.46
2:B:110:GLY:HA3	2:B:217:MET:HA	1.98	0.46
1:A:97:GLN:HB3	1:A:245:LYS:HB2	1.98	0.45
5:U:41:VAL:O	5:U:41:VAL:HG12	2.15	0.45
2:B:89:SER:HB3	2:B:178:LYS:HA	2.00	0.44
2:B:106:ALA:HB3	2:B:221:MET:HB3	2.00	0.44
3:C:42:LEU:HB2	3:C:103:ARG:HD3	1.98	0.44
3:C:108:ILE:HG23	3:C:249:ILE:HG12	1.99	0.44
1:A:83:VAL:HG23	1:A:220:VAL:HB	2.00	0.44
1:A:186:ASP:OD1	1:A:186:ASP:N	2.41	0.44
1:A:276:ILE:HD11	5:U:26:PRO:HG2	2.00	0.44
4:D:34:ASP:HB3	4:D:37:SER:HB2	1.99	0.44
1:A:90:ALA:HB3	1:A:209:PHE:HB2	1.99	0.44
3:C:65:THR:HG22	3:C:248:THR:HG23	2.00	0.44
1:A:255:ASN:OD1	1:A:255:ASN:N	2.48	0.43
2:B:229:GLU:HG2	2:B:231:LYS:HE3	2.00	0.43

Continued on next page...

Continued from previous page...

Atom-1	Atom-2	Interatomic distance (Å)	Clash overlap (Å)
1:A:142:THR:OG1	1:A:143:HIS:N	2.51	0.43
5:U:109:ASP:OD1	5:U:109:ASP:N	2.50	0.43
2:B:194:THR:OG1	2:B:195:ALA:N	2.51	0.43
2:B:120:CYS:SG	3:C:197:ARG:NH2	2.92	0.43
2:B:73:THR:HG23	2:B:204:THR:HG22	2.01	0.42
3:C:34:ALA:HB3	3:C:206:VAL:HA	2.01	0.42
1:A:134:PRO:HD2	1:A:137:ILE:HD11	2.02	0.42
2:B:107:ASN:HB3	2:B:174:TYR:HB3	2.02	0.42
3:C:39:PRO:HB3	3:C:105:GLY:HA3	2.02	0.42
5:U:25:LEU:HD12	5:U:25:LEU:HA	1.88	0.42
3:C:79:TRP:HB3	3:C:226:VAL:HG22	2.01	0.42
3:C:108:ILE:HG21	3:C:225:LEU:HD13	2.02	0.41
3:C:124:VAL:HG13	3:C:227:ILE:HG12	2.00	0.41
1:A:92:TRP:NE1	1:A:98:GLU:OE2	2.50	0.41
2:B:57:ASN:OD1	2:B:57:ASN:N	2.50	0.41
1:A:185:TYR:HH	3:C:147:THR:HG1	1.66	0.41
1:A:168:THR:OG1	2:B:21:SER:OG	2.28	0.41
1:A:25:PRO:HG3	1:A:58:TYR:HB2	2.02	0.40
3:C:98:TYR:CZ	3:C:262:ALA:HB2	2.57	0.40
1:A:172:THR:O	1:A:172:THR:OG1	2.33	0.40
1:A:71:GLU:HG3	4:D:40:LEU:HD22	2.04	0.40
1:A:185:TYR:OH	3:C:143:GLY:O	2.37	0.40

There are no symmetry-related clashes.

5.3 Torsion angles [i](#)

5.3.1 Protein backbone [i](#)

In the following table, the Percentiles column shows the percent Ramachandran outliers of the chain as a percentile score with respect to all PDB entries followed by that with respect to all EM entries.

The Analysed column shows the number of residues for which the backbone conformation was analysed, and the total number of residues.

Mol	Chain	Analysed	Favoured	Allowed	Outliers	Percentiles	
1	A	259/279 (93%)	242 (93%)	17 (7%)	0	100	100
2	B	233/235 (99%)	224 (96%)	8 (3%)	1 (0%)	34	69
3	C	251/265 (95%)	237 (94%)	14 (6%)	0	100	100

Continued on next page...

Continued from previous page...

Mol	Chain	Analysed	Favoured	Allowed	Outliers	Percentiles	
4	D	21/66 (32%)	17 (81%)	4 (19%)	0	100	100
5	U	106/132 (80%)	97 (92%)	7 (7%)	2 (2%)	8	39
All	All	870/977 (89%)	817 (94%)	50 (6%)	3 (0%)	44	74

All (3) Ramachandran outliers are listed below:

Mol	Chain	Res	Type
5	U	68	LEU
2	B	195	ALA
5	U	67	PRO

5.3.2 Protein sidechains ⓘ

In the following table, the Percentiles column shows the percent sidechain outliers of the chain as a percentile score with respect to all PDB entries followed by that with respect to all EM entries.

The Analysed column shows the number of residues for which the sidechain conformation was analysed, and the total number of residues.

Mol	Chain	Analysed	Rotameric	Outliers	Percentiles	
1	A	230/248 (93%)	221 (96%)	9 (4%)	32	67
2	B	206/206 (100%)	193 (94%)	13 (6%)	18	52
3	C	220/230 (96%)	202 (92%)	18 (8%)	11	41
4	D	23/57 (40%)	19 (83%)	4 (17%)	2	10
5	U	97/118 (82%)	91 (94%)	6 (6%)	18	53
All	All	776/859 (90%)	726 (94%)	50 (6%)	21	52

All (50) residues with a non-rotameric sidechain are listed below:

Mol	Chain	Res	Type
1	A	61	ASN
1	A	76	ARG
1	A	83	VAL
1	A	122	THR
1	A	142	THR
1	A	144	ASP
1	A	206	LEU
1	A	240	THR

Continued on next page...

Continued from previous page...

Mol	Chain	Res	Type
1	A	255	ASN
2	B	12	GLN
2	B	40	ILE
2	B	73	THR
2	B	76	THR
2	B	77	VAL
2	B	91	THR
2	B	113	THR
2	B	121	ASP
2	B	129	LEU
2	B	147	MET
2	B	158	LEU
2	B	200	VAL
2	B	224	ASP
3	C	20	ASN
3	C	24	THR
3	C	25	THR
3	C	26	GLN
3	C	30	HIS
3	C	48	THR
3	C	58	THR
3	C	65	THR
3	C	89	MET
3	C	91	VAL
3	C	115	THR
3	C	123	ILE
3	C	145	ASP
3	C	163	ASN
3	C	182	LEU
3	C	202	SER
3	C	212	VAL
3	C	255	GLU
4	D	37	SER
4	D	51	LYS
4	D	52	PHE
4	D	54	GLN
5	U	31	VAL
5	U	46	VAL
5	U	69	THR
5	U	103	LEU
5	U	111	VAL
5	U	113	VAL

Sometimes sidechains can be flipped to improve hydrogen bonding and reduce clashes. All (10) such sidechains are listed below:

Mol	Chain	Res	Type
1	A	88	GLN
1	A	202	ASN
2	B	90	ASN
2	B	107	ASN
2	B	184	HIS
3	C	26	GLN
3	C	111	GLN
3	C	163	ASN
3	C	216	ASN
5	U	61	GLN

5.3.3 RNA [i](#)

There are no RNA molecules in this entry.

5.4 Non-standard residues in protein, DNA, RNA chains [i](#)

There are no non-standard protein/DNA/RNA residues in this entry.

5.5 Carbohydrates [i](#)

There are no monosaccharides in this entry.

5.6 Ligand geometry [i](#)

Of 3 ligands modelled in this entry, 3 are monoatomic - leaving 0 for Mogul analysis.

There are no bond length outliers.

There are no bond angle outliers.

There are no chirality outliers.

There are no torsion outliers.

There are no ring outliers.

No monomer is involved in short contacts.

5.7 Other polymers [i](#)

There are no such residues in this entry.

5.8 Polymer linkage issues [i](#)

The following chains have linkage breaks:

Mol	Chain	Number of breaks
1	A	3

All chain breaks are listed below:

Model	Chain	Residue-1	Atom-1	Residue-2	Atom-2	Distance (Å)
1	A	277:SER	C	278:SER	N	1.18
1	A	36:ILE	C	37:LEU	N	1.16
1	A	278:SER	C	279:ALA	N	1.12

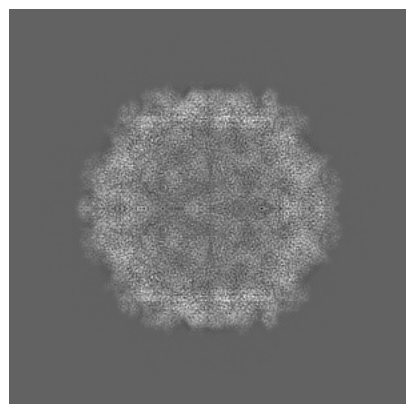
6 Map visualisation [i](#)

This section contains visualisations of the EMDB entry EMD-20443. These allow visual inspection of the internal detail of the map and identification of artifacts.

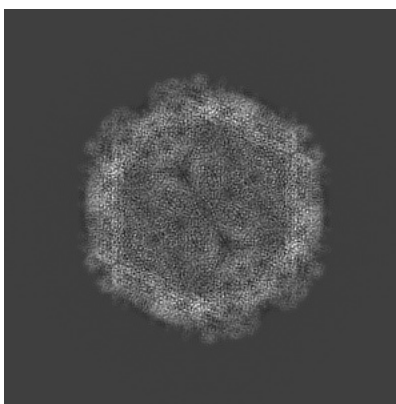
Images derived from a raw map, generated by summing the deposited half-maps, are presented below the corresponding image components of the primary map to allow further visual inspection and comparison with those of the primary map.

6.1 Orthogonal projections [i](#)

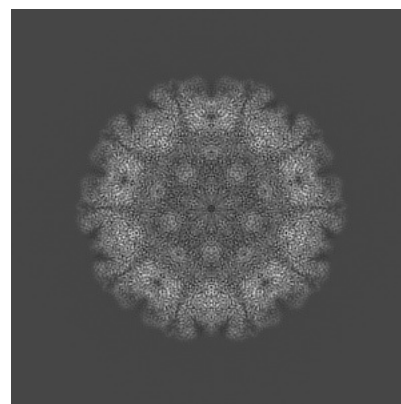
6.1.1 Primary map



X

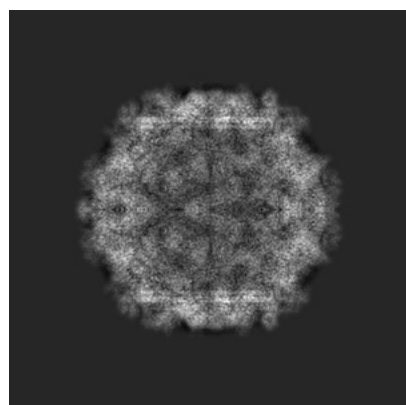


Y

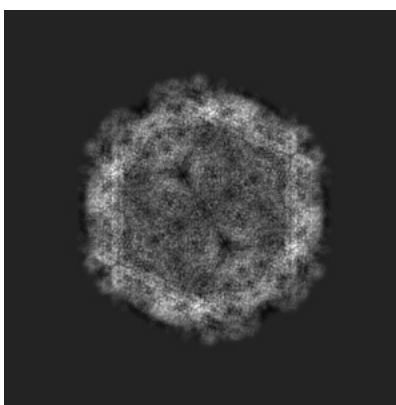


Z

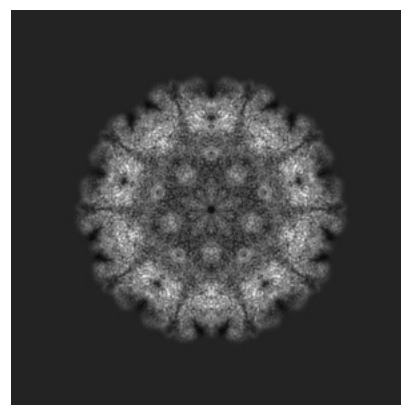
6.1.2 Raw map



X



Y

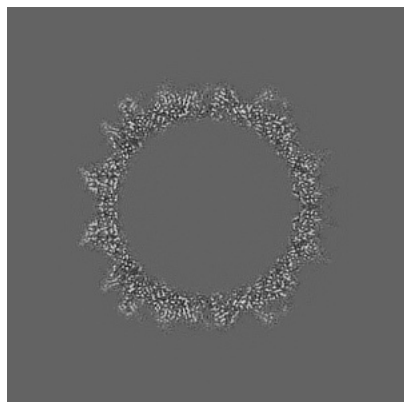


Z

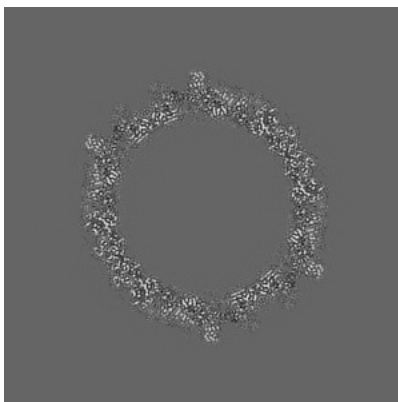
The images above show the map projected in three orthogonal directions.

6.2 Central slices [i](#)

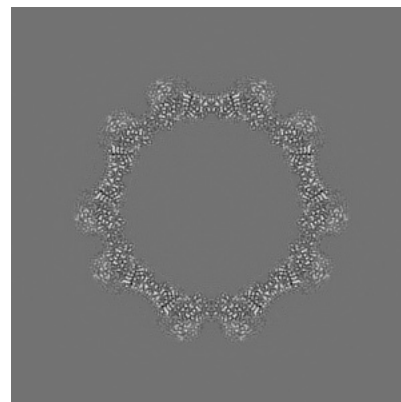
6.2.1 Primary map



X Index: 288

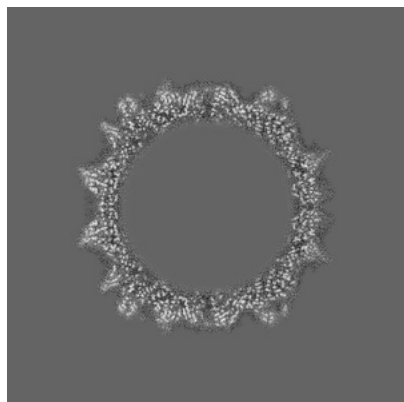


Y Index: 288

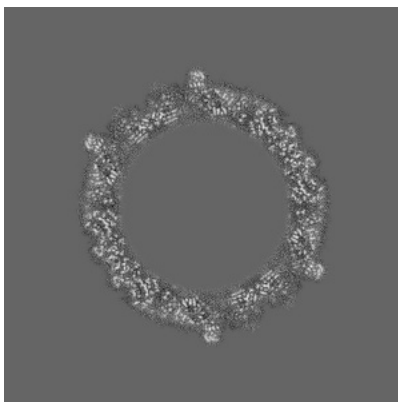


Z Index: 288

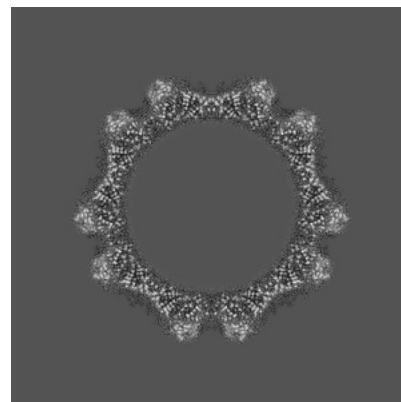
6.2.2 Raw map



X Index: 288



Y Index: 288

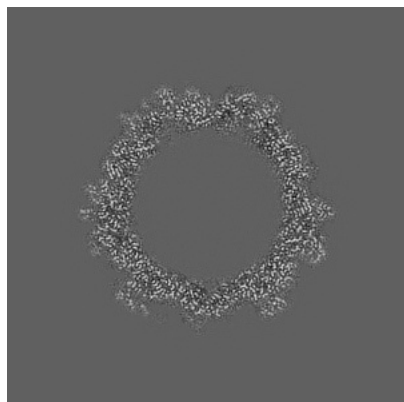


Z Index: 288

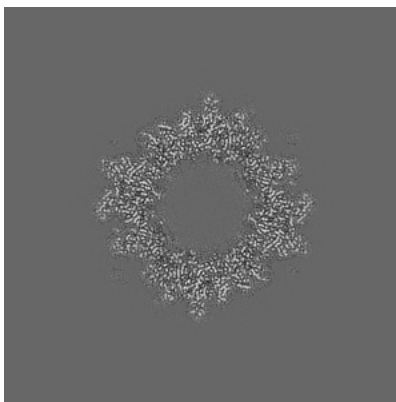
The images above show central slices of the map in three orthogonal directions.

6.3 Largest variance slices [i](#)

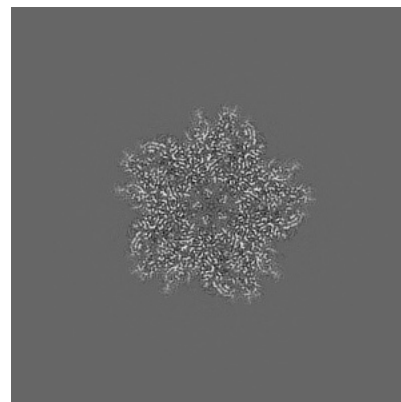
6.3.1 Primary map



X Index: 354

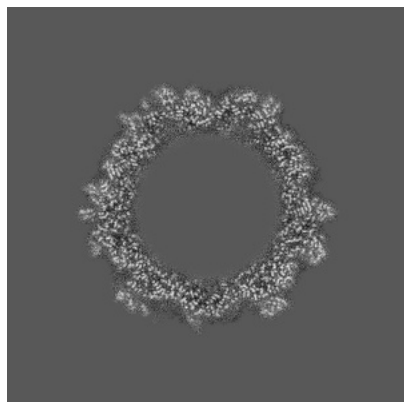


Y Index: 180

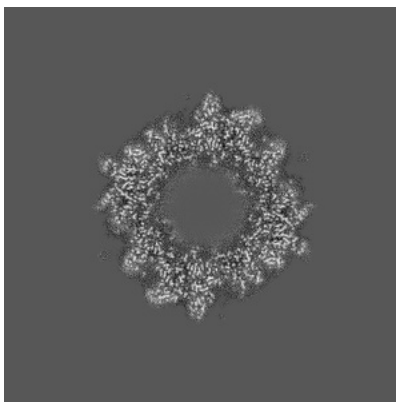


Z Index: 159

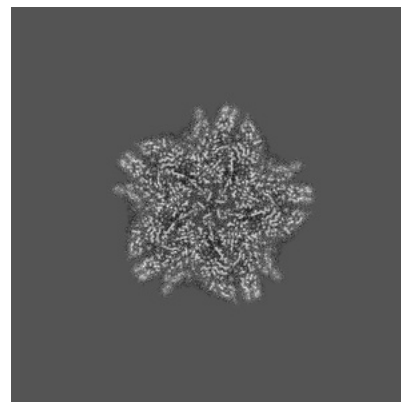
6.3.2 Raw map



X Index: 354



Y Index: 397

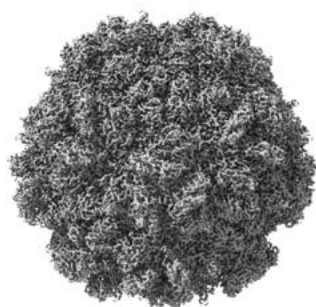


Z Index: 157

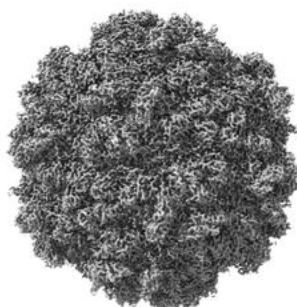
The images above show the largest variance slices of the map in three orthogonal directions.

6.4 Orthogonal surface views [i](#)

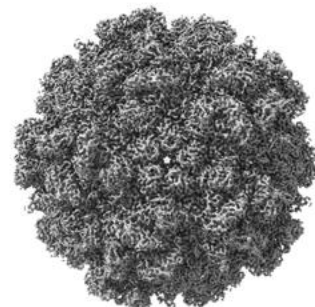
6.4.1 Primary map



X



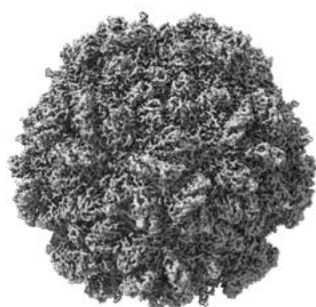
Y



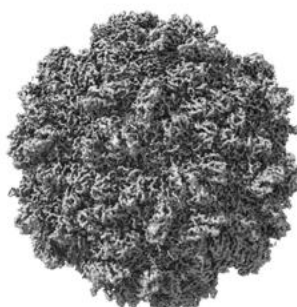
Z

The images above show the 3D surface view of the map at the recommended contour level 3.5. These images, in conjunction with the slice images, may facilitate assessment of whether an appropriate contour level has been provided.

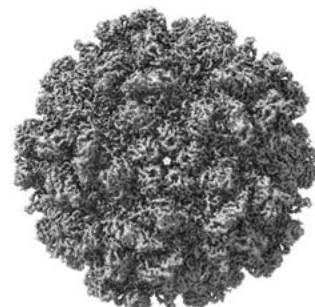
6.4.2 Raw map



X



Y



Z

These images show the 3D surface of the raw map. The raw map's contour level was selected so that its surface encloses the same volume as the primary map does at its recommended contour level.

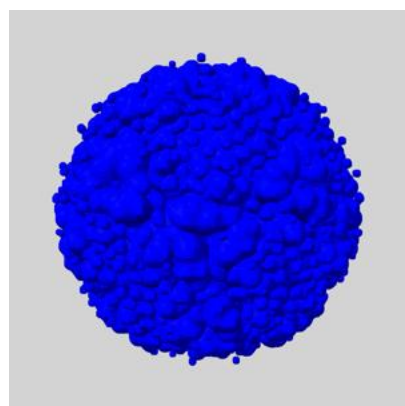
6.5 Mask visualisation [i](#)

This section shows the 3D surface view of the primary map at 50% transparency overlaid with the specified mask at 0% transparency

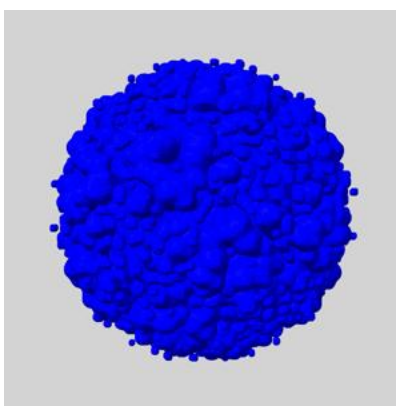
A mask typically either:

- Encompasses the whole structure
- Separates out a domain, a functional unit, a monomer or an area of interest from a larger structure

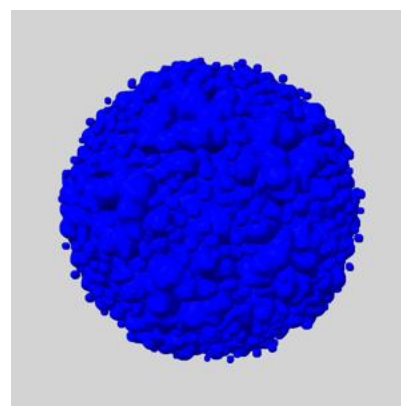
6.5.1 emd_20443_msk_1.map [i](#)



X



Y

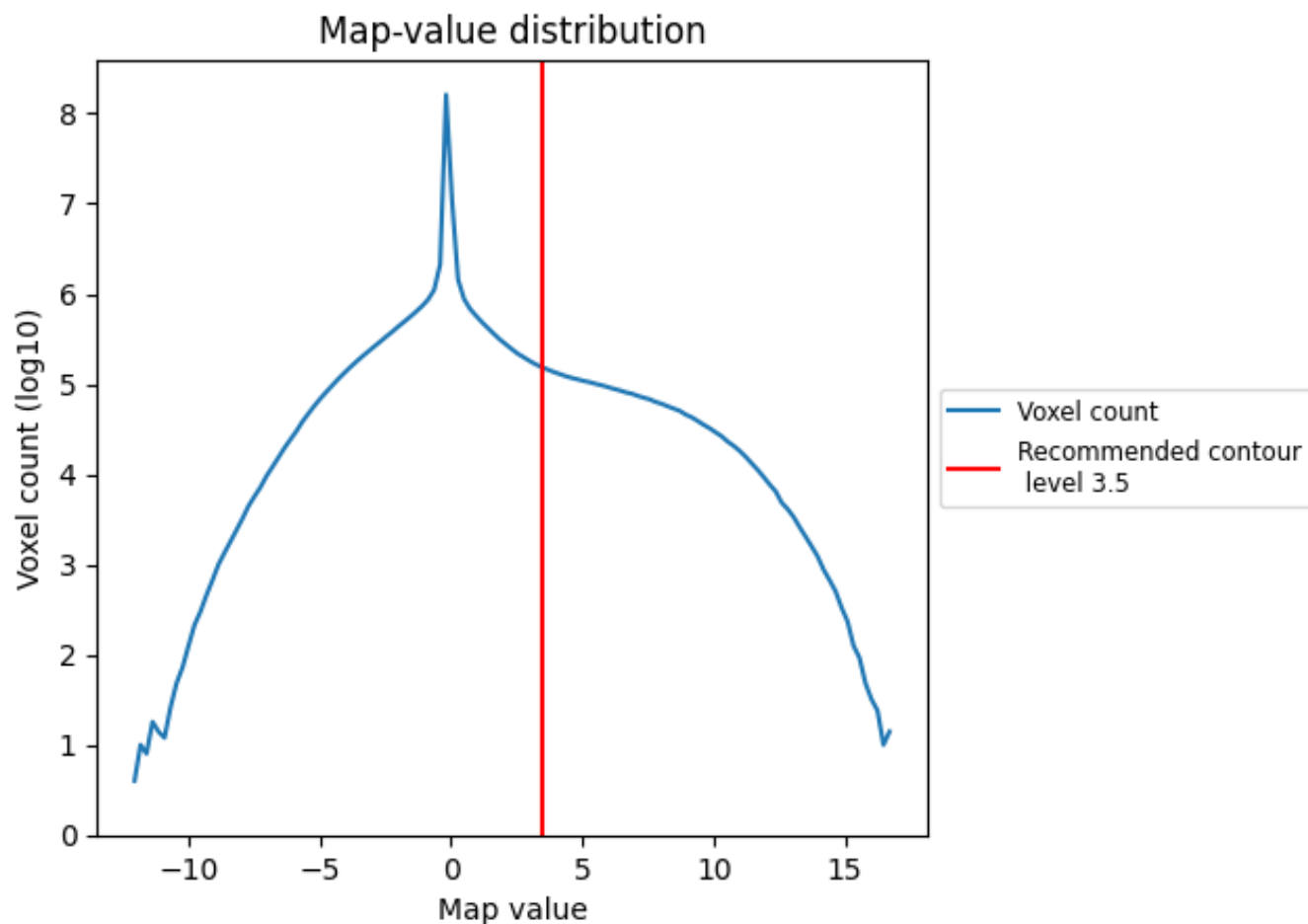


Z

7 Map analysis [i](#)

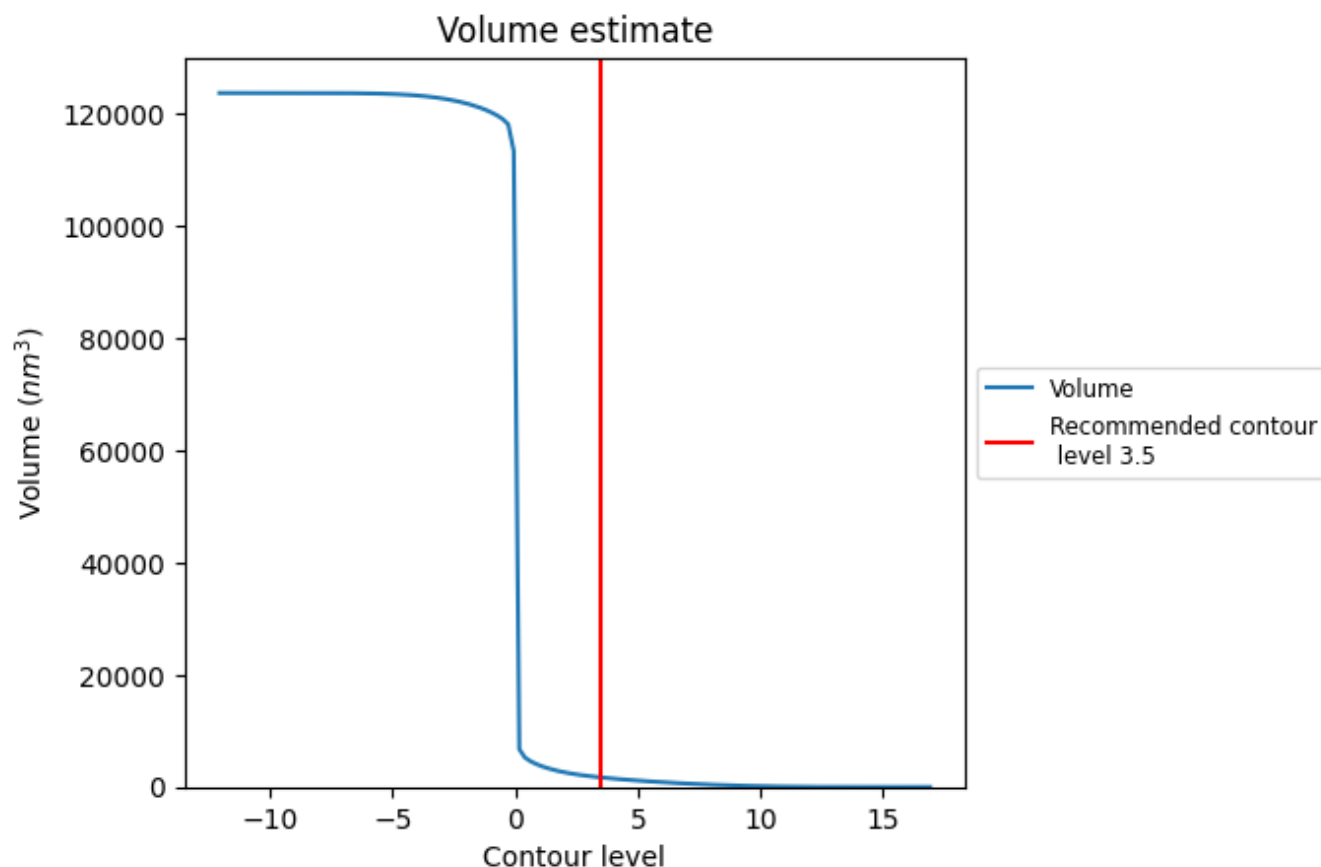
This section contains the results of statistical analysis of the map.

7.1 Map-value distribution [i](#)



The map-value distribution is plotted in 128 intervals along the x-axis. The y-axis is logarithmic. A spike in this graph at zero usually indicates that the volume has been masked.

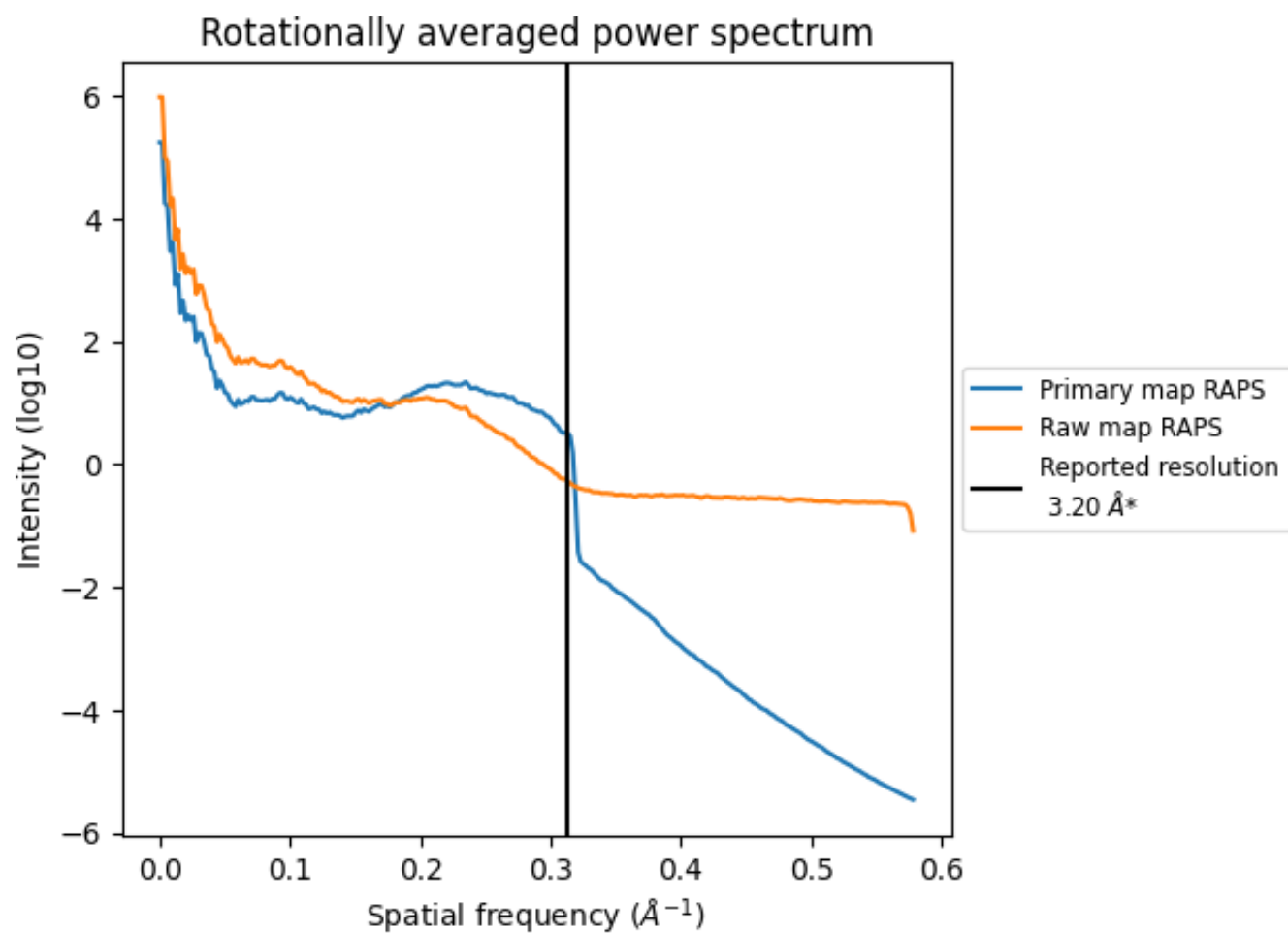
7.2 Volume estimate [i](#)



The volume at the recommended contour level is 1695 nm³; this corresponds to an approximate mass of 1531 kDa.

The volume estimate graph shows how the enclosed volume varies with the contour level. The recommended contour level is shown as a vertical line and the intersection between the line and the curve gives the volume of the enclosed surface at the given level.

7.3 Rotationally averaged power spectrum [i](#)

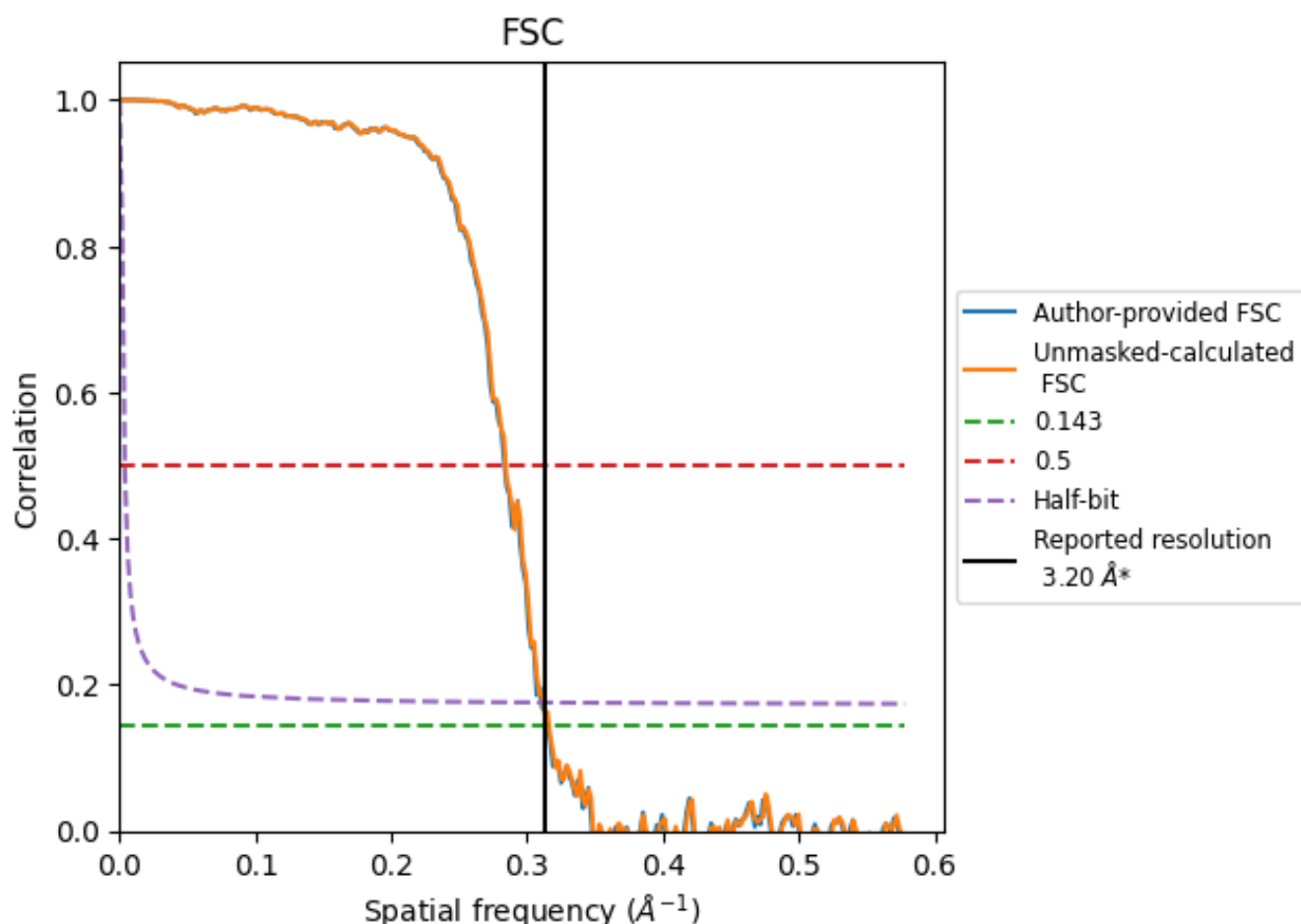


*Reported resolution corresponds to spatial frequency of 0.312 \AA^{-1}

8 Fourier-Shell correlation [i](#)

Fourier-Shell Correlation (FSC) is the most commonly used method to estimate the resolution of single-particle and subtomogram-averaged maps. The shape of the curve depends on the imposed symmetry, mask and whether or not the two 3D reconstructions used were processed from a common reference. The reported resolution is shown as a black line. A curve is displayed for the half-bit criterion in addition to lines showing the 0.143 gold standard cut-off and 0.5 cut-off.

8.1 FSC [i](#)



*Reported resolution corresponds to spatial frequency of 0.312 Å⁻¹

8.2 Resolution estimates [i](#)

Resolution estimate (Å)	Estimation criterion (FSC cut-off)		
	0.143	0.5	Half-bit
Reported by author	3.20	-	-
Author-provided FSC curve	3.17	3.53	3.22
Unmasked-calculated*	3.16	3.52	3.21

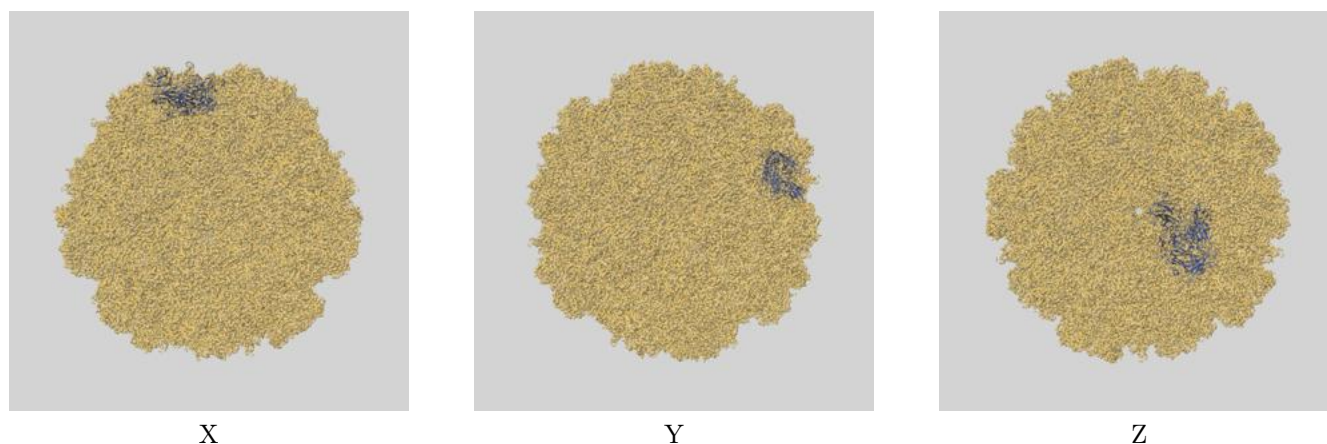
*Resolution estimate based on FSC curve calculated by comparison of deposited half-maps.

9 Map-model fit [i](#)

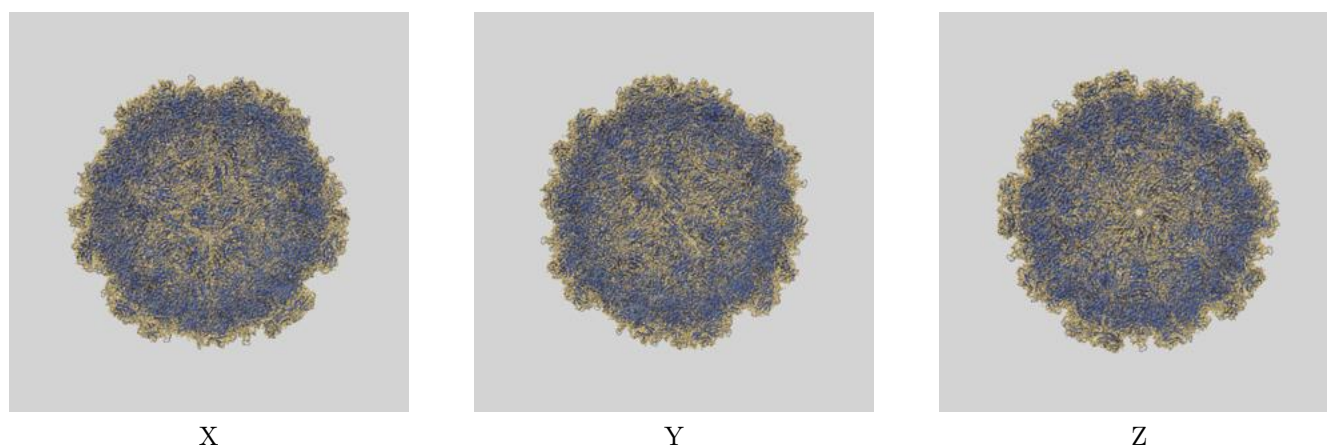
This section contains information regarding the fit between EMDB map EMD-20443 and PDB model 6PPO. Per-residue inclusion information can be found in section 3 on page 5.

9.1 Map-model overlays

9.1.1 Map-model overlay [i](#)

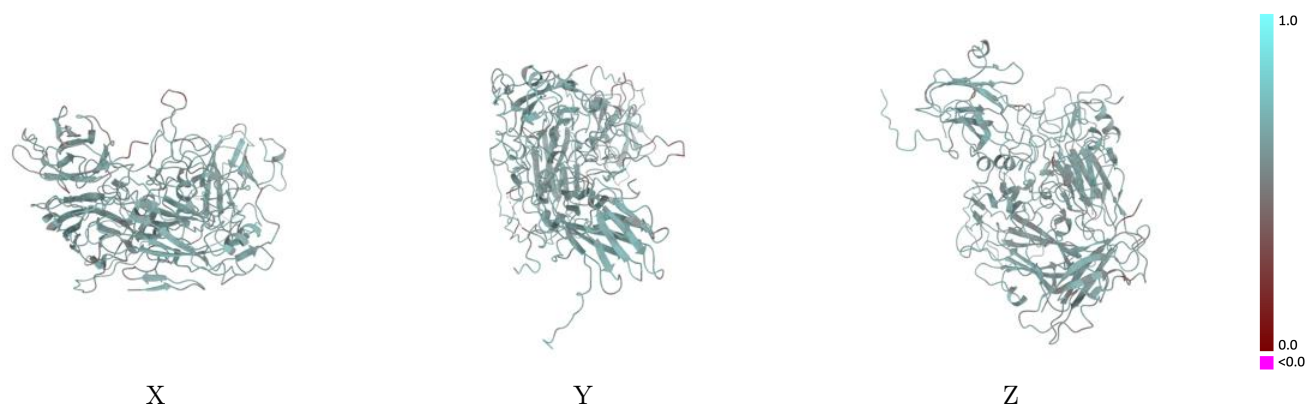


9.1.2 Map-model assembly overlay [i](#)



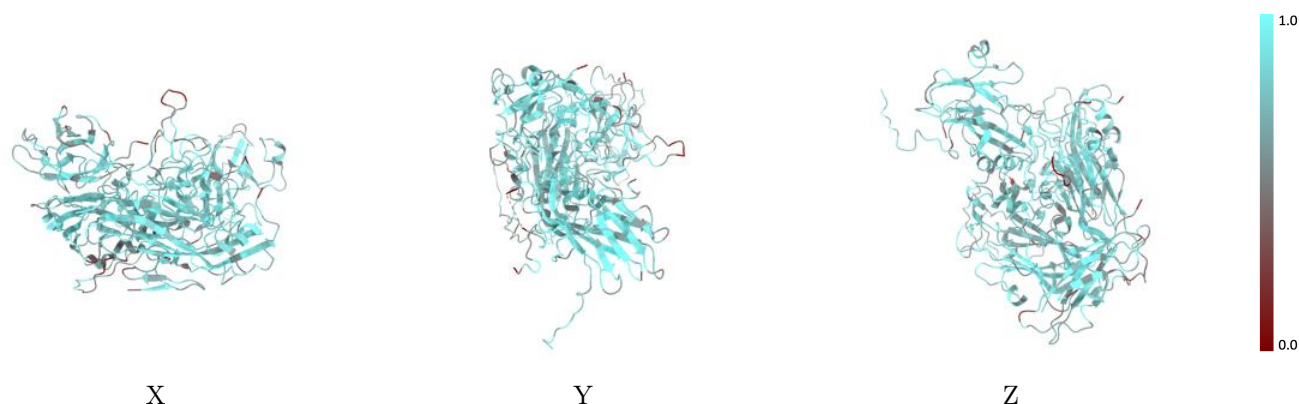
The images above show the 3D surface view of the map at the recommended contour level 3.5 at 50% transparency in yellow overlaid with a ribbon representation of the model coloured in blue. These images allow for the visual assessment of the quality of fit between the atomic model and the map.

9.2 Q-score mapped to coordinate model [i](#)



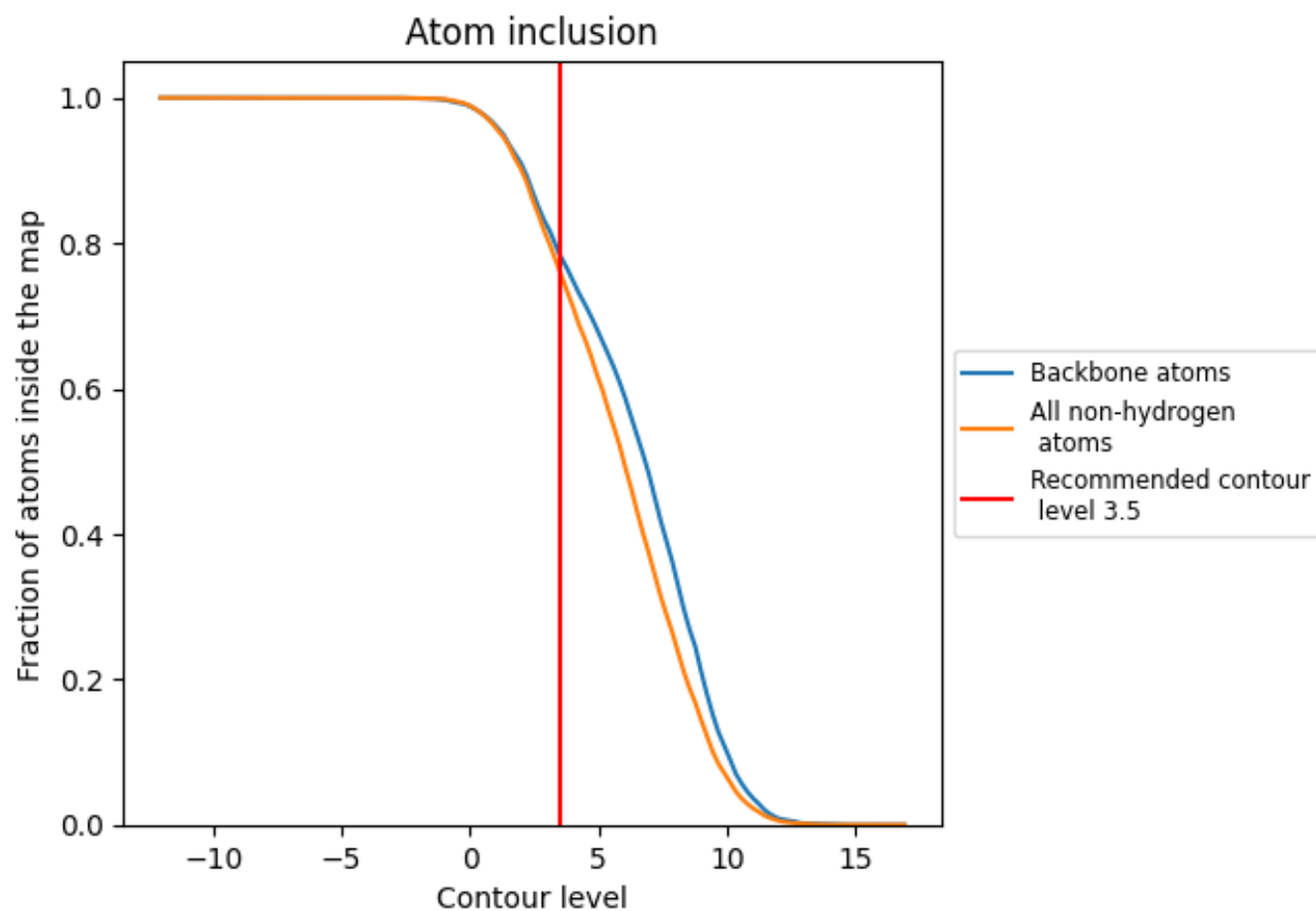
The images above show the model with each residue coloured according to its Q-score. This shows their resolvability in the map with higher Q-score values reflecting better resolvability. Please note: Q-score is calculating the resolvability of atoms, and thus high values are only expected at resolutions at which atoms can be resolved. Low Q-score values may therefore be expected for many entries.

9.3 Atom inclusion mapped to coordinate model [i](#)



The images above show the model with each residue coloured according to its atom inclusion. This shows to what extent they are inside the map at the recommended contour level (3.5).

9.4 Atom inclusion [i](#)



At the recommended contour level, 78% of all backbone atoms, 76% of all non-hydrogen atoms, are inside the map.

9.5 Map-model fit summary ⓘ

The table lists the average atom inclusion at the recommended contour level (3.5) and Q-score for the entire model and for each chain.

Chain	Atom inclusion	Q-score
All	<div></div> 0.7606	<div></div> 0.5810
A	<div></div> 0.7536	<div></div> 0.5830
B	<div></div> 0.7830	<div></div> 0.5870
C	<div></div> 0.7877	<div></div> 0.5920
D	<div></div> 0.6198	<div></div> 0.5530
U	<div></div> 0.6985	<div></div> 0.5470

