



Full wwPDB X-ray Structure Validation Report ⓘ

May 28, 2020 – 08:25 pm BST

PDB ID : 6PQ1
Title : Structure of the Fremyella diplosiphon OCP1
Authors : Sutter, M.; Dominguez-Martin, M.A.; Bao, H.; Kerfeld, C.A.
Deposited on : 2019-07-08
Resolution : 1.61 Å(reported)

This is a Full wwPDB X-ray Structure Validation Report for a publicly released PDB entry.

We welcome your comments at validation@mail.wwpdb.org

A user guide is available at

<https://www.wwpdb.org/validation/2017/XrayValidationReportHelp>

with specific help available everywhere you see the ⓘ symbol.

The following versions of software and data (see [references ⓘ](#)) were used in the production of this report:

MolProbity	:	4.02b-467
Mogul	:	1.8.5 (274361), CSD as541be (2020)
Xtriage (Phenix)	:	1.13
EDS	:	2.11
buster-report	:	1.1.7 (2018)
Percentile statistics	:	20191225.v01 (using entries in the PDB archive December 25th 2019)
Refmac	:	5.8.0158
CCP4	:	7.0.044 (Gargrove)
Ideal geometry (proteins)	:	Engh & Huber (2001)
Ideal geometry (DNA, RNA)	:	Parkinson et al. (1996)
Validation Pipeline (wwPDB-VP)	:	2.11

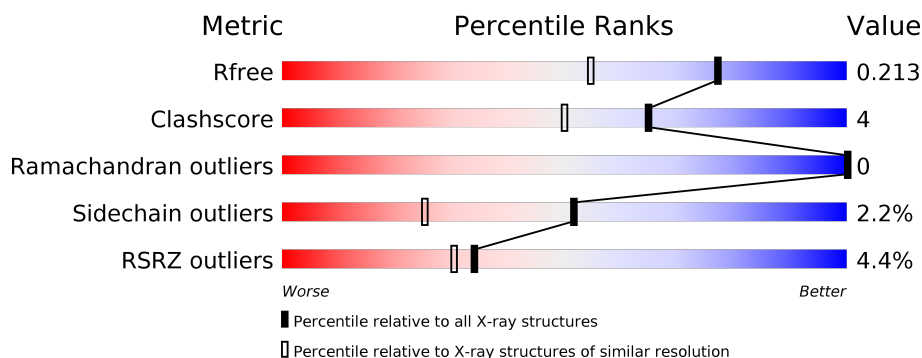
1 Overall quality at a glance

The following experimental techniques were used to determine the structure:

X-RAY DIFFRACTION

The reported resolution of this entry is 1.61 Å.

Percentile scores (ranging between 0-100) for global validation metrics of the entry are shown in the following graphic. The table shows the number of entries on which the scores are based.



Metric	Whole archive (#Entries)	Similar resolution (#Entries, resolution range(Å))
R_{free}	130704	4693 (1.64-1.60)
Clashscore	141614	5002 (1.64-1.60)
Ramachandran outliers	138981	4888 (1.64-1.60)
Sidechain outliers	138945	4887 (1.64-1.60)
RSRZ outliers	127900	4609 (1.64-1.60)

The table below summarises the geometric issues observed across the polymeric chains and their fit to the electron density. The red, orange, yellow and green segments on the lower bar indicate the fraction of residues that contain outliers for ≥ 3 , 2, 1 and 0 types of geometric quality criteria respectively. A grey segment represents the fraction of residues that are not modelled. The numeric value for each fraction is indicated below the corresponding segment, with a dot representing fractions $\leq 5\%$. The upper red bar (where present) indicates the fraction of residues that have poor fit to the electron density. The numeric value is given above the bar.

Mol	Chain	Length	Quality of chain
1	A	326	<div> <div>4%</div> <div> <div></div> <div>90%</div> <div>7% ..</div> </div> </div>

2 Entry composition [i](#)

There are 3 unique types of molecules in this entry. The entry contains 5367 atoms, of which 2557 are hydrogens and 0 are deuteriums.

In the tables below, the ZeroOcc column contains the number of atoms modelled with zero occupancy, the AltConf column contains the number of residues with at least one atom in alternate conformation and the Trace column contains the number of residues modelled with at most 2 atoms.

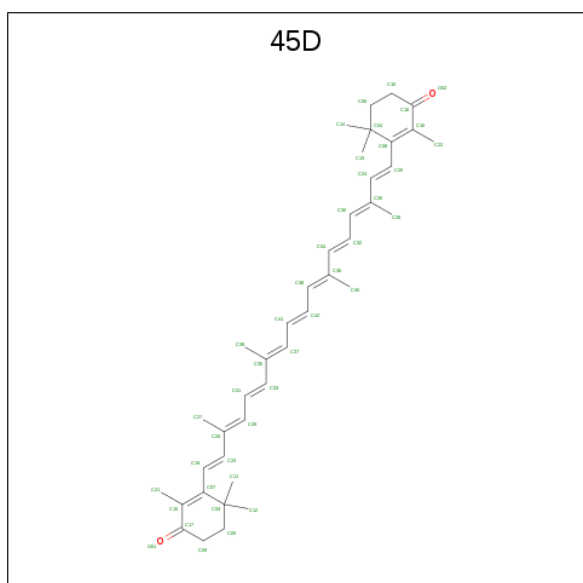
- Molecule 1 is a protein called Orange carotenoid-binding protein.

Mol	Chain	Residues	Atoms						ZeroOcc	AltConf	Trace
			Total	C	H	N	O	S			
1	A	320	5019	1613	2505	419	469	13	0	2	0

There are 7 discrepancies between the modelled and reference sequences:

Chain	Residue	Modelled	Actual	Comment	Reference
A	320	HIS	-	expression tag	UNP A0A0D6KM24
A	321	HIS	-	expression tag	UNP A0A0D6KM24
A	322	HIS	-	expression tag	UNP A0A0D6KM24
A	323	HIS	-	expression tag	UNP A0A0D6KM24
A	324	HIS	-	expression tag	UNP A0A0D6KM24
A	325	HIS	-	expression tag	UNP A0A0D6KM24
A	326	HIS	-	expression tag	UNP A0A0D6KM24

- Molecule 2 is beta,beta-carotene-4,4'-dione (three-letter code: 45D) (formula: C₄₀H₅₂O₂) (labeled as "Ligand of Interest" by author).



Mol	Chain	Residues	Atoms				ZeroOcc	AltConf
2	A	1	Total	C	H	O	0	0
			94	40	52	2		

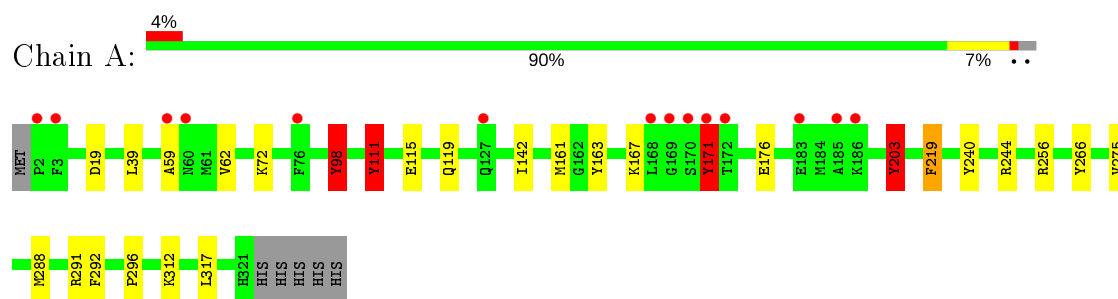
- Molecule 3 is water.

Mol	Chain	Residues	Atoms		ZeroOcc	AltConf
3	A	254	Total	O	0	0
			254	254		

3 Residue-property plots [i](#)

These plots are drawn for all protein, RNA and DNA chains in the entry. The first graphic for a chain summarises the proportions of the various outlier classes displayed in the second graphic. The second graphic shows the sequence view annotated by issues in geometry and electron density. Residues are color-coded according to the number of geometric quality criteria for which they contain at least one outlier: green = 0, yellow = 1, orange = 2 and red = 3 or more. A red dot above a residue indicates a poor fit to the electron density ($RSRZ > 2$). Stretches of 2 or more consecutive residues without any outlier are shown as a green connector. Residues present in the sample, but not in the model, are shown in grey.

- Molecule 1: Orange carotenoid-binding protein



4 Data and refinement statistics

Property	Value	Source
Space group	P 32 2 1	Depositor
Cell constants a, b, c, α , β , γ	95.02Å 95.02Å 78.52Å 90.00° 90.00° 120.00°	Depositor
Resolution (Å)	41.14 – 1.61 41.14 – 1.61	Depositor EDS
% Data completeness (in resolution range)	95.4 (41.14-1.61) 95.4 (41.14-1.61)	Depositor EDS
R_{merge}	0.04	Depositor
R_{sym}	(Not available)	Depositor
$\langle I/\sigma(I) \rangle$ ¹	1.51 (at 1.61Å)	Xtriage
Refinement program	PHENIX 1.16_3549	Depositor
R, R_{free}	0.195 , 0.213 0.195 , 0.213	Depositor DCC
R_{free} test set	1987 reflections (3.92%)	wwPDB-VP
Wilson B-factor (Å ²)	25.7	Xtriage
Anisotropy	0.043	Xtriage
Bulk solvent k_{sol} (e/Å ³), B_{sol} (Å ²)	0.38 , 42.7	EDS
L-test for twinning ²	$\langle L \rangle = 0.49$, $\langle L^2 \rangle = 0.33$	Xtriage
Estimated twinning fraction	0.026 for -h,-k,l	Xtriage
F_o, F_c correlation	0.96	EDS
Total number of atoms	5367	wwPDB-VP
Average B, all atoms (Å ²)	37.0	wwPDB-VP

Xtriage's analysis on translational NCS is as follows: *The largest off-origin peak in the Patterson function is 4.49% of the height of the origin peak. No significant pseudotranslation is detected.*

¹Intensities estimated from amplitudes.

²Theoretical values of $\langle |L| \rangle$, $\langle L^2 \rangle$ for acentric reflections are 0.5, 0.333 respectively for untwinned datasets, and 0.375, 0.2 for perfectly twinned datasets.

5 Model quality [i](#)

5.1 Standard geometry [i](#)

Bond lengths and bond angles in the following residue types are not validated in this section: 45D

The Z score for a bond length (or angle) is the number of standard deviations the observed value is removed from the expected value. A bond length (or angle) with $|Z| > 5$ is considered an outlier worth inspection. RMSZ is the root-mean-square of all Z scores of the bond lengths (or angles).

Mol	Chain	Bond lengths		Bond angles	
		RMSZ	$\# Z > 5$	RMSZ	$\# Z > 5$
1	A	0.83	1/2579 (0.0%)	1.08	18/3513 (0.5%)

Chiral center outliers are detected by calculating the chiral volume of a chiral center and verifying if the center is modelled as a planar moiety or with the opposite hand. A planarity outlier is detected by checking planarity of atoms in a peptide group, atoms in a mainchain group or atoms of a sidechain that are expected to be planar.

Mol	Chain	#Chirality outliers	#Planarity outliers
1	A	0	4

All (1) bond length outliers are listed below:

Mol	Chain	Res	Type	Atoms	Z	Observed(Å)	Ideal(Å)
1	A	203	TYR	CE2-CZ	-5.18	1.31	1.38

All (18) bond angle outliers are listed below:

Mol	Chain	Res	Type	Atoms	Z	Observed(°)	Ideal(°)
1	A	98	TYR	CB-CG-CD2	-18.05	110.17	121.00
1	A	203	TYR	CB-CG-CD2	-13.54	112.88	121.00
1	A	98	TYR	CB-CG-CD1	11.66	128.00	121.00
1	A	171	TYR	CB-CG-CD2	-10.59	114.65	121.00
1	A	111	TYR	CB-CG-CD2	-9.18	115.49	121.00
1	A	219	PHE	CB-CG-CD2	-9.11	114.43	120.80
1	A	19	ASP	CB-CG-OD1	8.47	125.93	118.30
1	A	98	TYR	CA-CB-CG	6.79	126.30	113.40
1	A	203	TYR	CB-CG-CD1	6.68	125.01	121.00
1	A	312	LYS	CD-CE-NZ	6.68	127.06	111.70
1	A	219	PHE	CB-CG-CD1	6.67	125.47	120.80
1	A	291	ARG	NE-CZ-NH1	6.32	123.46	120.30

Continued on next page...

Continued from previous page...

Mol	Chain	Res	Type	Atoms	Z	Observed(°)	Ideal(°)
1	A	111	TYR	CB-CG-CD1	6.21	124.73	121.00
1	A	171	TYR	CB-CG-CD1	6.07	124.64	121.00
1	A	292	PHE	CB-CG-CD2	-5.93	116.65	120.80
1	A	292	PHE	CB-CG-CD1	5.85	124.90	120.80
1	A	171	TYR	N-CA-CB	-5.36	100.95	110.60
1	A	171	TYR	CA-CB-CG	5.05	123.00	113.40

There are no chirality outliers.

All (4) planarity outliers are listed below:

Mol	Chain	Res	Type	Group
1	A	111	TYR	Sidechain
1	A	171	TYR	Sidechain
1	A	203	TYR	Sidechain
1	A	98	TYR	Sidechain

5.2 Too-close contacts

In the following table, the Non-H and H(model) columns list the number of non-hydrogen atoms and hydrogen atoms in the chain respectively. The H(added) column lists the number of hydrogen atoms added and optimized by MolProbity. The Clashes column lists the number of clashes within the asymmetric unit, whereas Symm-Clashes lists symmetry related clashes.

Mol	Chain	Non-H	H(model)	H(added)	Clashes	Symm-Clashes
1	A	2514	2505	2507	19	0
2	A	42	52	52	2	0
3	A	254	0	0	2	0
All	All	2810	2557	2559	21	0

The all-atom clashscore is defined as the number of clashes found per 1000 atoms (including hydrogen atoms). The all-atom clashscore for this structure is 4.

All (21) close contacts within the same asymmetric unit are listed below, sorted by their clash magnitude.

Atom-1	Atom-2	Interatomic distance (Å)	Clash overlap (Å)
1:A:176:GLU:HG3	3:A:603:HOH:O	1.87	0.74
1:A:256:ARG:HG3	1:A:317:LEU:HD11	1.76	0.67
1:A:111:TYR:C	1:A:111:TYR:CD1	2.74	0.60
1:A:171:TYR:O	1:A:171:TYR:HD1	1.84	0.60

Continued on next page...

Continued from previous page...

Atom-1	Atom-2	Interatomic distance (Å)	Clash overlap (Å)
1:A:111:TYR:C	1:A:111:TYR:HD1	2.04	0.60
1:A:176:GLU:N	3:A:603:HOH:O	2.33	0.53
1:A:171:TYR:C	1:A:171:TYR:HD1	2.11	0.53
1:A:171:TYR:C	1:A:171:TYR:CD1	2.83	0.52
1:A:203:TYR:CD1	1:A:203:TYR:C	2.83	0.51
1:A:59:ALA:O	1:A:62:VAL:HG22	2.13	0.49
1:A:163:TYR:OH	1:A:167:LYS:HB3	2.13	0.49
1:A:115:GLU:O	1:A:119:GLN:HG2	2.15	0.47
1:A:240:TYR:CZ	1:A:244:ARG:HD2	2.50	0.46
1:A:275:VAL:CG2	1:A:288:MET:HG3	2.47	0.44
1:A:171:TYR:O	1:A:171:TYR:CD1	2.69	0.44
1:A:266:TYR:CD1	1:A:296:PRO:HD3	2.54	0.43
1:A:275:VAL:HG23	1:A:288:MET:HG3	2.01	0.42
2:A:501:45D:H421	2:A:501:45D:H401	1.91	0.42
1:A:39:LEU:HD21	1:A:142:ILE:HD12	2.02	0.42
2:A:501:45D:H321	2:A:501:45D:H281	1.91	0.41

There are no symmetry-related clashes.

5.3 Torsion angles [i](#)

5.3.1 Protein backbone [i](#)

In the following table, the Percentiles column shows the percent Ramachandran outliers of the chain as a percentile score with respect to all X-ray entries followed by that with respect to entries of similar resolution.

The Analysed column shows the number of residues for which the backbone conformation was analysed, and the total number of residues.

Mol	Chain	Analysed	Favoured	Allowed	Outliers	Percentiles	
1	A	320/326 (98%)	316 (99%)	4 (1%)	0	100	100

There are no Ramachandran outliers to report.

5.3.2 Protein sidechains [i](#)

In the following table, the Percentiles column shows the percent sidechain outliers of the chain as a percentile score with respect to all X-ray entries followed by that with respect to entries of similar resolution.

The Analysed column shows the number of residues for which the sidechain conformation was analysed, and the total number of residues.

Mol	Chain	Analysed	Rotameric	Outliers	Percentiles
1	A	270/274 (98%)	264 (98%)	6 (2%)	52 25

All (6) residues with a non-rotameric sidechain are listed below:

Mol	Chain	Res	Type
1	A	72	LYS
1	A	98	TYR
1	A	111	TYR
1	A	171	TYR
1	A	203	TYR
1	A	219	PHE

Some sidechains can be flipped to improve hydrogen bonding and reduce clashes. There are no such sidechains identified.

5.3.3 RNA [i](#)

There are no RNA molecules in this entry.

5.4 Non-standard residues in protein, DNA, RNA chains [i](#)

There are no non-standard protein/DNA/RNA residues in this entry.

5.5 Carbohydrates [i](#)

There are no carbohydrates in this entry.

5.6 Ligand geometry [i](#)

1 ligand is modelled in this entry.

In the following table, the Counts columns list the number of bonds (or angles) for which Mogul statistics could be retrieved, the number of bonds (or angles) that are observed in the model and the number of bonds (or angles) that are defined in the Chemical Component Dictionary. The Link column lists molecule types, if any, to which the group is linked. The Z score for a bond length (or angle) is the number of standard deviations the observed value is removed from the expected value. A bond length (or angle) with $|Z| > 2$ is considered an outlier worth inspection. RMSZ is the root-mean-square of all Z scores of the bond lengths (or angles).

Mol	Type	Chain	Res	Link	Bond lengths			Bond angles		
					Counts	RMSZ	# Z > 2	Counts	RMSZ	# Z > 2
2	45D	A	501	-	43,43,43	2.27	13 (30%)	54,60,60	1.92	14 (25%)

In the following table, the Chirals column lists the number of chiral outliers, the number of chiral centers analysed, the number of these observed in the model and the number defined in the Chemical Component Dictionary. Similar counts are reported in the Torsion and Rings columns. '-' means no outliers of that kind were identified.

Mol	Type	Chain	Res	Link	Chirals	Torsions	Rings
2	45D	A	501	-	-	2/29/69/69	0/2/2/2

All (13) bond length outliers are listed below:

Mol	Chain	Res	Type	Atoms	Z	Observed(Å)	Ideal(Å)
2	A	501	45D	C24-C26	-6.17	1.32	1.45
2	A	501	45D	C08-C16	5.88	1.43	1.35
2	A	501	45D	C33-C35	-4.38	1.36	1.45
2	A	501	45D	C07-C15	4.25	1.41	1.35
2	A	501	45D	O01-C17	3.60	1.30	1.23
2	A	501	45D	C23-C25	-3.53	1.38	1.45
2	A	501	45D	C34-C36	-3.23	1.39	1.45
2	A	501	45D	C06-C10	-2.91	1.47	1.53
2	A	501	45D	C12-C03	2.72	1.59	1.53
2	A	501	45D	C32-C30	-2.58	1.35	1.43
2	A	501	45D	C09-C17	-2.51	1.47	1.50
2	A	501	45D	C18-C16	-2.40	1.43	1.47
2	A	501	45D	C14-C04	-2.17	1.49	1.53

All (14) bond angle outliers are listed below:

Mol	Chain	Res	Type	Atoms	Z	Observed(°)	Ideal(°)
2	A	501	45D	C09-C17-C15	5.60	123.82	118.65
2	A	501	45D	C24-C26-C30	3.75	124.70	118.94
2	A	501	45D	O02-C18-C16	3.73	124.26	120.96
2	A	501	45D	C28-C26-C30	-3.62	117.85	122.92
2	A	501	45D	C40-C36-C38	-3.43	118.12	122.92
2	A	501	45D	C33-C35-C37	3.18	123.82	118.94
2	A	501	45D	C12-C03-C07	3.18	115.45	110.30
2	A	501	45D	C23-C25-C29	3.15	123.77	118.94
2	A	501	45D	C27-C25-C29	-2.90	118.86	122.92
2	A	501	45D	O01-C17-C09	-2.77	116.32	120.86
2	A	501	45D	C20-C24-C26	2.73	130.37	126.23
2	A	501	45D	C34-C36-C38	2.28	122.44	118.94

Continued on next page...

Continued from previous page...

Mol	Chain	Res	Type	Atoms	Z	Observed(°)	Ideal(°)
2	A	501	45D	C05-C09-C17	-2.17	108.97	112.85
2	A	501	45D	C42-C41-C37	2.17	127.92	123.47

There are no chirality outliers.

All (2) torsion outliers are listed below:

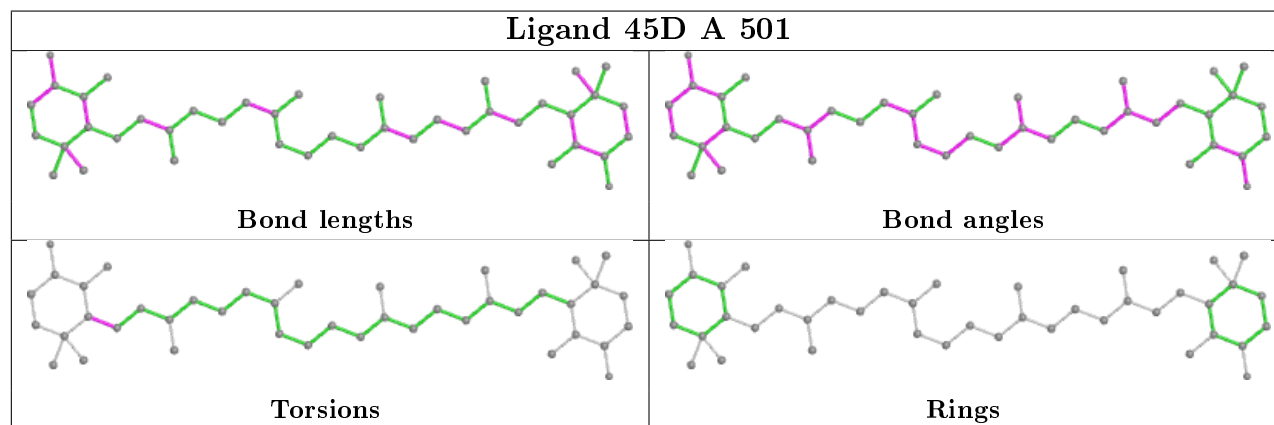
Mol	Chain	Res	Type	Atoms
2	A	501	45D	C03-C07-C19-C23
2	A	501	45D	C15-C07-C19-C23

There are no ring outliers.

1 monomer is involved in 2 short contacts:

Mol	Chain	Res	Type	Clashes	Symm-Clashes
2	A	501	45D	2	0

The following is a two-dimensional graphical depiction of Mogul quality analysis of bond lengths, bond angles, torsion angles, and ring geometry for all instances of the Ligand of Interest. In addition, ligands with molecular weight > 250 and outliers as shown on the validation Tables will also be included. For torsion angles, if less than 5% of the Mogul distribution of torsion angles is within 10 degrees of the torsion angle in question, then that torsion angle is considered an outlier. Any bond that is central to one or more torsion angles identified as an outlier by Mogul will be highlighted in the graph. For rings, the root-mean-square deviation (RMSD) between the ring in question and similar rings identified by Mogul is calculated over all ring torsion angles. If the average RMSD is greater than 60 degrees and the minimal RMSD between the ring in question and any Mogul-identified rings is also greater than 60 degrees, then that ring is considered an outlier. The outliers are highlighted in purple. The color gray indicates Mogul did not find sufficient equivalents in the CSD to analyse the geometry.



5.7 Other polymers

There are no such residues in this entry.

5.8 Polymer linkage issues

There are no chain breaks in this entry.

6 Fit of model and data [i](#)

6.1 Protein, DNA and RNA chains [i](#)

In the following table, the column labelled ‘#RSRZ> 2’ contains the number (and percentage) of RSRZ outliers, followed by percent RSRZ outliers for the chain as percentile scores relative to all X-ray entries and entries of similar resolution. The OWAB column contains the minimum, median, 95th percentile and maximum values of the occupancy-weighted average B-factor per residue. The column labelled ‘Q< 0.9’ lists the number of (and percentage) of residues with an average occupancy less than 0.9.

Mol	Chain	Analysed	<RSRZ>	#RSRZ>2	OWAB(Å ²)	Q<0.9
1	A	320/326 (98%)	-0.04	14 (4%) 34 30	17, 30, 64, 94	0

All (14) RSRZ outliers are listed below:

Mol	Chain	Res	Type	RSRZ
1	A	170	SER	5.3
1	A	185	ALA	4.2
1	A	169	GLY	3.9
1	A	171	TYR	3.7
1	A	183	GLU	3.1
1	A	186	LYS	3.0
1	A	168	LEU	2.7
1	A	60	ASN	2.6
1	A	172	THR	2.6
1	A	127	GLN	2.6
1	A	3	PHE	2.5
1	A	2	PRO	2.2
1	A	59	ALA	2.2
1	A	76	PHE	2.2

6.2 Non-standard residues in protein, DNA, RNA chains [i](#)

There are no non-standard protein/DNA/RNA residues in this entry.

6.3 Carbohydrates [i](#)

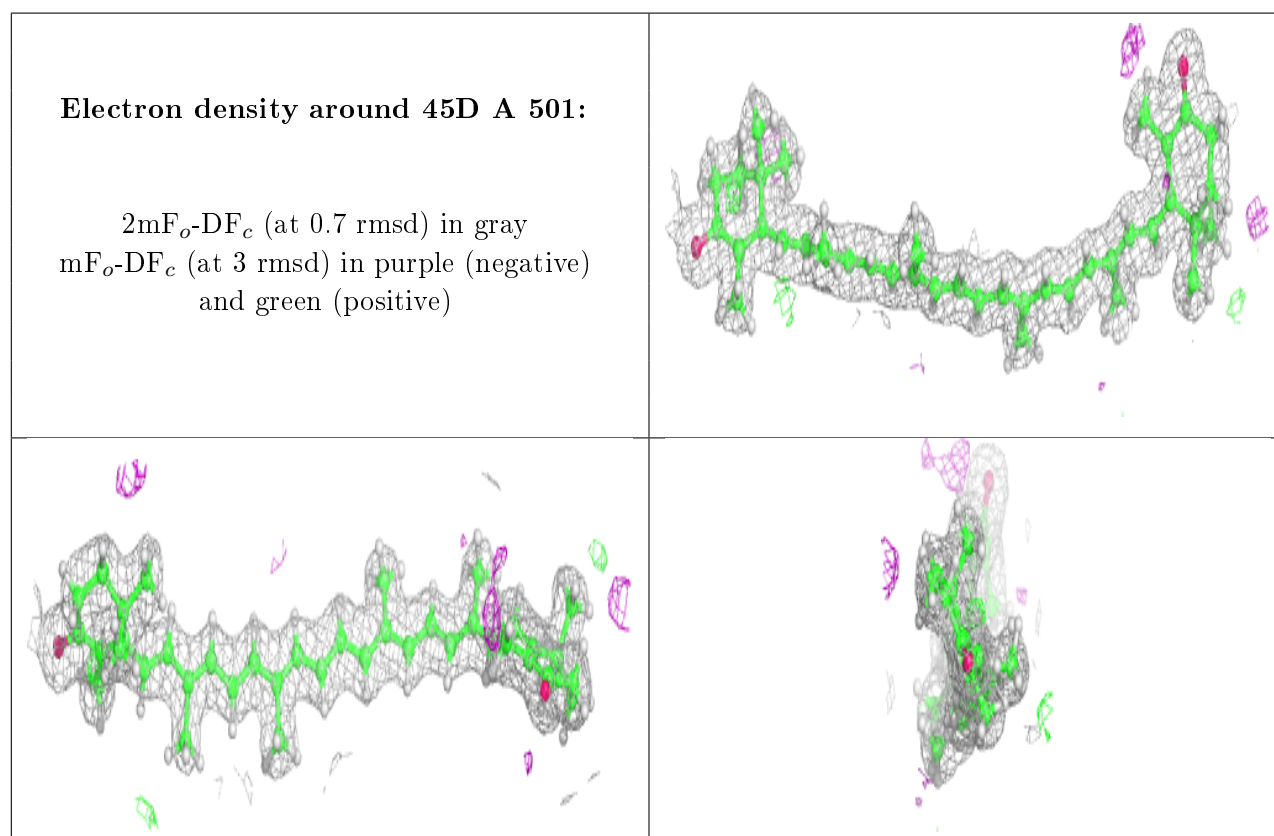
There are no carbohydrates in this entry.

6.4 Ligands [i](#)

In the following table, the Atoms column lists the number of modelled atoms in the group and the number defined in the chemical component dictionary. The B-factors column lists the minimum, median, 95th percentile and maximum values of B factors of atoms in the group. The column labelled 'Q< 0.9' lists the number of atoms with occupancy less than 0.9.

Mol	Type	Chain	Res	Atoms	RSCC	RSR	B-factors(\AA^2)	Q<0.9
2	45D	A	501	42/42	0.96	0.08	18,25,31,37	0

The following is a graphical depiction of the model fit to experimental electron density of all instances of the Ligand of Interest. In addition, ligands with molecular weight > 250 and outliers as shown on the geometry validation Tables will also be included. Each fit is shown from different orientation to approximate a three-dimensional view.



6.5 Other polymers [i](#)

There are no such residues in this entry.