



wwPDB EM Validation Summary Report ⓘ

Nov 12, 2022 – 01:27 PM EST

PDB ID : 6PQU
EMDB ID : EMD-20453
Title : Cryo-EM structure of HzTransib/nicked TIR substrate DNA pre-reaction complex (PRC)
Authors : Liu, C.; Yang, Y.; Schatz, D.G.
Deposited on : 2019-07-10
Resolution : 3.30 Å(reported)
Based on initial model : 6PQN

This is a wwPDB EM Validation Summary Report for a publicly released PDB entry.

We welcome your comments at validation@mail.wwpdb.org

A user guide is available at

<https://www.wwpdb.org/validation/2017/EMValidationReportHelp>
with specific help available everywhere you see the ⓘ symbol.

The types of validation reports are described at

<http://www.wwpdb.org/validation/2017/FAQs#types>.

The following versions of software and data (see [references ⓘ](#)) were used in the production of this report:

EMDB validation analysis : 0.0.1.dev43
MolProbity : 4.02b-467
Percentile statistics : 20191225.v01 (using entries in the PDB archive December 25th 2019)
MapQ : 1.9.9
Ideal geometry (proteins) : Engh & Huber (2001)
Ideal geometry (DNA, RNA) : Parkinson et al. (1996)
Validation Pipeline (wwPDB-VP) : 2.31.2

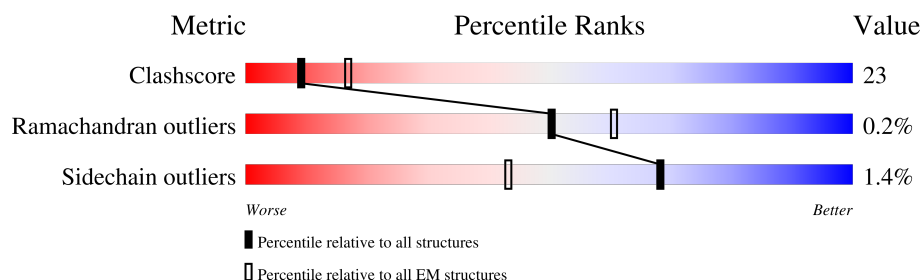
1 Overall quality at a glance

The following experimental techniques were used to determine the structure:

ELECTRON MICROSCOPY

The reported resolution of this entry is 3.30 Å.

Percentile scores (ranging between 0-100) for global validation metrics of the entry are shown in the following graphic. The table shows the number of entries on which the scores are based.



Metric	Whole archive (#Entries)	EM structures (#Entries)
Clashscore	158937	4297
Ramachandran outliers	154571	4023
Sidechain outliers	154315	3826

The table below summarises the geometric issues observed across the polymeric chains and their fit to the map. The red, orange, yellow and green segments of the bar indicate the fraction of residues that contain outliers for ≥ 3 , 2, 1 and 0 types of geometric quality criteria respectively. A grey segment represents the fraction of residues that are not modelled. The numeric value for each fraction is indicated below the corresponding segment, with a dot representing fractions $\leq 5\%$. The upper red bar (where present) indicates the fraction of residues that have poor fit to the EM map (all-atom inclusion $< 40\%$). The numeric value is given above the bar.

Mol	Chain	Length	Quality of chain
1	A	497	<div> <div>27%</div> <div>49%</div> <div>44%</div> <div>6%</div> </div>
1	E	497	<div> <div>27%</div> <div>49%</div> <div>44%</div> <div>6%</div> </div>
2	B	16	<div> <div>38%</div> <div>50%</div> <div>44%</div> <div>6%</div> </div>
2	F	16	<div> <div>44%</div> <div>50%</div> <div>44%</div> <div>6%</div> </div>
3	C	16	<div> <div>6%</div> <div>31%</div> <div>69%</div> </div>
3	G	16	<div> <div>6%</div> <div>25%</div> <div>75%</div> </div>
4	D	32	<div> <div>28%</div> <div>31%</div> <div>66%</div> <div>.</div> </div>
4	H	32	<div> <div>22%</div> <div>34%</div> <div>62%</div> <div>.</div> </div>

2 Entry composition

There are 7 unique types of molecules in this entry. The entry contains 10004 atoms, of which 0 are hydrogens and 0 are deuteriums.

In the tables below, the AltConf column contains the number of residues with at least one atom in alternate conformation and the Trace column contains the number of residues modelled with at most 2 atoms.

- Molecule 1 is a protein called DNA-mediated transposase.

Mol	Chain	Residues	Atoms					AltConf	Trace
1	A	468	Total	C	N	O	S	0	0
			3728	2376	632	703	17		
1	E	468	Total	C	N	O	S	0	0
			3728	2376	632	703	17		

There are 12 discrepancies between the modelled and reference sequences:

Chain	Residue	Modelled	Actual	Comment	Reference
A	508	HIS	-	expression tag	UNP B0F0C5
A	509	HIS	-	expression tag	UNP B0F0C5
A	510	HIS	-	expression tag	UNP B0F0C5
A	511	HIS	-	expression tag	UNP B0F0C5
A	512	HIS	-	expression tag	UNP B0F0C5
A	513	HIS	-	expression tag	UNP B0F0C5
E	508	HIS	-	expression tag	UNP B0F0C5
E	509	HIS	-	expression tag	UNP B0F0C5
E	510	HIS	-	expression tag	UNP B0F0C5
E	511	HIS	-	expression tag	UNP B0F0C5
E	512	HIS	-	expression tag	UNP B0F0C5
E	513	HIS	-	expression tag	UNP B0F0C5

- Molecule 2 is a DNA chain called DNA (5'-D(P*AP*TP*CP*TP*GP*GP*CP*CP*TP*AP*GP*AP*TP*CP*T)-3').

Mol	Chain	Residues	Atoms					AltConf	Trace
2	B	15	Total	C	N	O	P	0	0
			305	146	52	92	15		
2	F	15	Total	C	N	O	P	0	0
			305	146	52	92	15		

- Molecule 3 is a DNA chain called DNA (5'-D(P*CP*AP*CP*GP*GP*TP*GP*GP*AP*TP*CP*GP*AP*AP*AP*A)-3').

Mol	Chain	Residues	Atoms					AltConf	Trace
3	C	16	Total	C	N	O	P	0	0
			333	157	68	92	16		
3	G	16	Total	C	N	O	P	0	0
			333	157	68	92	16		

- Molecule 4 is a DNA chain called TIR substrate DNA transferred strand.

Mol	Chain	Residues	Atoms					AltConf	Trace
4	D	31	Total	C	N	O	P	0	0
			633	302	112	188	31		
4	H	31	Total	C	N	O	P	0	0
			633	302	112	188	31		

- Molecule 5 is MAGNESIUM ION (three-letter code: MG) (formula: Mg).

Mol	Chain	Residues	Atoms		AltConf
5	A	1	Total	Mg	0
			1	1	
5	E	1	Total	Mg	0
			1	1	

- Molecule 6 is ZINC ION (three-letter code: ZN) (formula: Zn).

Mol	Chain	Residues	Atoms		AltConf
6	A	1	Total	Zn	0
			1	1	
6	E	1	Total	Zn	0
			1	1	

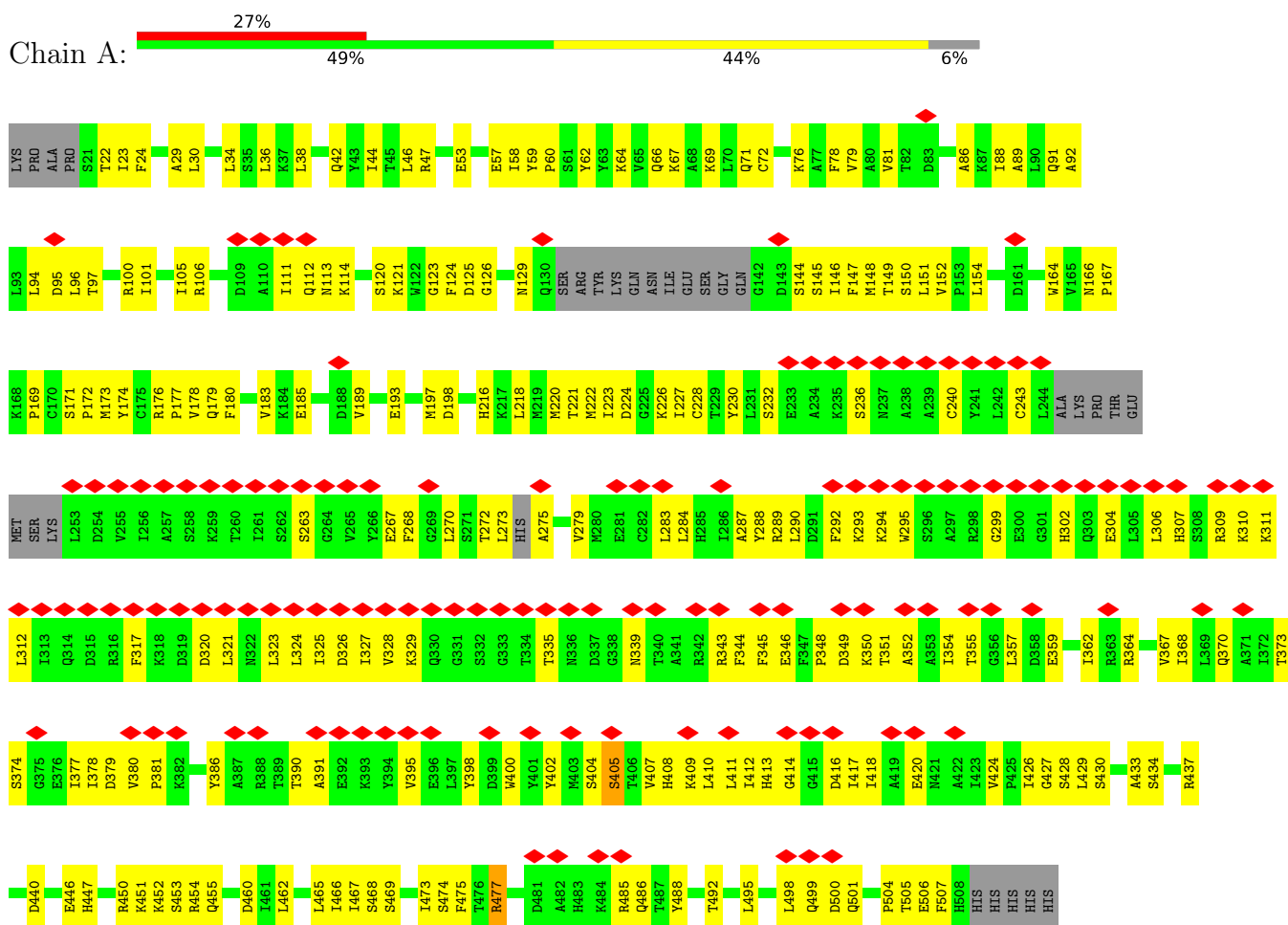
- Molecule 7 is POTASSIUM ION (three-letter code: K) (formula: K).

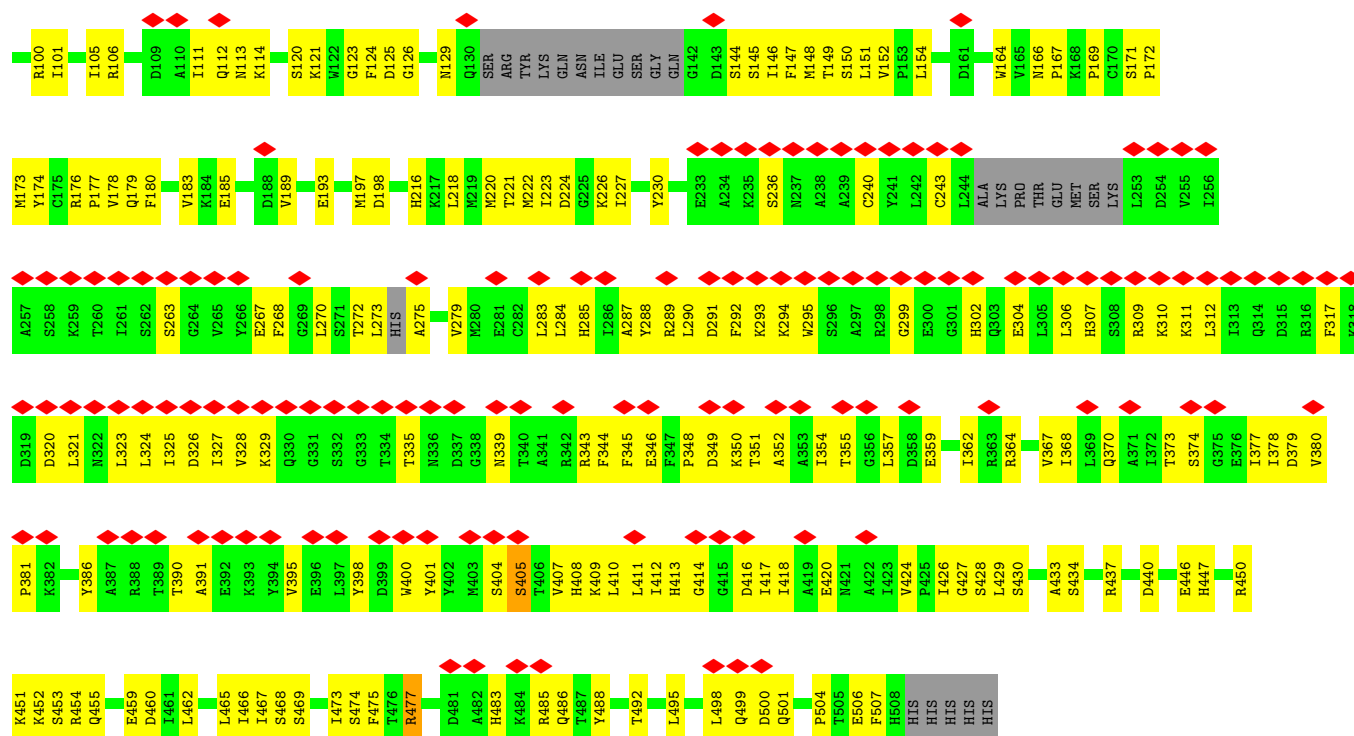
Mol	Chain	Residues	Atoms		AltConf
7	A	1	Total	K	0
			1	1	
7	E	1	Total	K	0
			1	1	

3 Residue-property plots

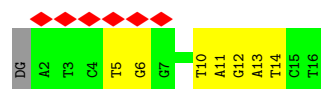
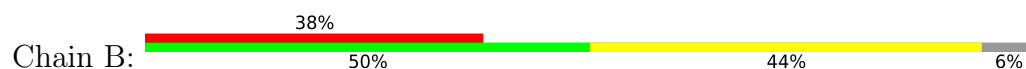
These plots are drawn for all protein, RNA, DNA and oligosaccharide chains in the entry. The first graphic for a chain summarises the proportions of the various outlier classes displayed in the second graphic. The second graphic shows the sequence view annotated by issues in geometry and atom inclusion in map density. Residues are color-coded according to the number of geometric quality criteria for which they contain at least one outlier: green = 0, yellow = 1, orange = 2 and red = 3 or more. A red diamond above a residue indicates a poor fit to the EM map for this residue (all-atom inclusion < 40%). Stretches of 2 or more consecutive residues without any outlier are shown as a green connector. Residues present in the sample, but not in the model, are shown in grey.

• Molecule 1: DNA-mediated transposase

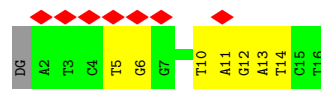




- Molecule 2: DNA (5'-D(P*AP*TP*CP*TP*GP*GP*CP*CP*TP*AP*GP*AP*TP*CP*T)-3')



- Molecule 2: DNA (5'-D(P*AP*TP*CP*TP*GP*GP*CP*CP*TP*AP*GP*AP*TP*CP*T)-3')



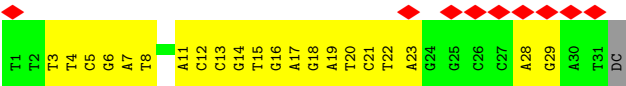
- Molecule 3: DNA (5'-D(P*CP*AP*CP*GP*GP*TP*GP*GP*AP*TP*CP*GP*AP*AP*AP*A)-3')



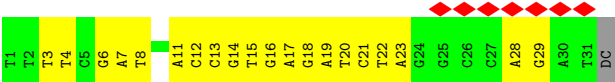
- Molecule 3: DNA (5'-D(P*CP*AP*CP*GP*GP*TP*GP*GP*AP*TP*CP*GP*AP*AP*AP*A)-3')



● Molecule 4: TIR substrate DNA transferred strand



● Molecule 4: TIR substrate DNA transferred strand



4 Experimental information

Property	Value	Source
EM reconstruction method	SINGLE PARTICLE	Depositor
Imposed symmetry	POINT, C2	Depositor
Number of particles used	59333	Depositor
Resolution determination method	FSC 0.143 CUT-OFF	Depositor
CTF correction method	PHASE FLIPPING AND AMPLITUDE CORRECTION	Depositor
Microscope	FEI TITAN KRIOS	Depositor
Voltage (kV)	300	Depositor
Electron dose ($e^-/\text{\AA}^2$)	52.2	Depositor
Minimum defocus (nm)	1400	Depositor
Maximum defocus (nm)	2400	Depositor
Magnification	130000	Depositor
Image detector	GATAN K2 SUMMIT (4k x 4k)	Depositor
Maximum map value	0.166	Depositor
Minimum map value	-0.108	Depositor
Average map value	-0.000	Depositor
Map value standard deviation	0.004	Depositor
Recommended contour level	0.0213	Depositor
Map size (Å)	268.8, 268.8, 268.8	wwPDB
Map dimensions	256, 256, 256	wwPDB
Map angles (°)	90.0, 90.0, 90.0	wwPDB
Pixel spacing (Å)	1.05, 1.05, 1.05	Depositor

5 Model quality [i](#)

5.1 Standard geometry [i](#)

Bond lengths and bond angles in the following residue types are not validated in this section: ZN, K, MG

The Z score for a bond length (or angle) is the number of standard deviations the observed value is removed from the expected value. A bond length (or angle) with $|Z| > 5$ is considered an outlier worth inspection. RMSZ is the root-mean-square of all Z scores of the bond lengths (or angles).

Mol	Chain	Bond lengths		Bond angles	
		RMSZ	# Z >5	RMSZ	# Z >5
1	A	0.43	0/3797	0.56	0/5123
1	E	0.43	0/3797	0.56	0/5123
2	B	0.60	0/340	0.98	0/522
2	F	0.60	0/340	0.97	0/522
3	C	1.02	0/375	0.90	0/577
3	G	1.02	0/375	0.90	0/577
4	D	0.85	0/708	1.01	0/1090
4	H	0.85	0/708	1.01	0/1090
All	All	0.57	0/10440	0.71	0/14624

There are no bond length outliers.

There are no bond angle outliers.

There are no chirality outliers.

There are no planarity outliers.

5.2 Too-close contacts [i](#)

In the following table, the Non-H and H(model) columns list the number of non-hydrogen atoms and hydrogen atoms in the chain respectively. The H(added) column lists the number of hydrogen atoms added and optimized by MolProbity. The Clashes column lists the number of clashes within the asymmetric unit, whereas Symm-Clashes lists symmetry-related clashes.

Mol	Chain	Non-H	H(model)	H(added)	Clashes	Symm-Clashes
1	A	3728	0	3768	190	0
1	E	3728	0	3768	183	0
2	B	305	0	171	6	0
2	F	305	0	171	7	0
3	C	333	0	179	16	0

Continued on next page...

Continued from previous page...

Mol	Chain	Non-H	H(model)	H(added)	Clashes	Symm-Clashes
3	G	333	0	179	17	0
4	D	633	0	351	21	0
4	H	633	0	351	18	0
5	A	1	0	0	0	0
5	E	1	0	0	0	0
6	A	1	0	0	0	0
6	E	1	0	0	0	0
7	A	1	0	0	0	0
7	E	1	0	0	0	0
All	All	10004	0	8938	431	0

The all-atom clashscore is defined as the number of clashes found per 1000 atoms (including hydrogen atoms). The all-atom clashscore for this structure is 23.

The worst 5 of 431 close contacts within the same asymmetric unit are listed below, sorted by their clash magnitude.

Atom-1	Atom-2	Interatomic distance (Å)	Clash overlap (Å)
1:E:240:CYS:SG	1:E:243:CYS:HB2	1.86	1.14
1:A:240:CYS:SG	1:A:243:CYS:HB2	1.87	1.14
1:A:450:ARG:HA	3:G:22:DT:H1'	1.55	0.88
1:E:44:ILE:HD11	1:E:62:TYR:HB2	1.56	0.88
1:A:44:ILE:HD11	1:A:62:TYR:HB2	1.56	0.87

There are no symmetry-related clashes.

5.3 Torsion angles ⓘ

5.3.1 Protein backbone ⓘ

In the following table, the Percentiles column shows the percent Ramachandran outliers of the chain as a percentile score with respect to all PDB entries followed by that with respect to all EM entries.

The Analysed column shows the number of residues for which the backbone conformation was analysed, and the total number of residues.

Mol	Chain	Analysed	Favoured	Allowed	Outliers	Percentiles	
1	A	460/497 (93%)	448 (97%)	11 (2%)	1 (0%)	47	77
1	E	460/497 (93%)	448 (97%)	11 (2%)	1 (0%)	47	77
All	All	920/994 (93%)	896 (97%)	22 (2%)	2 (0%)	50	77

All (2) Ramachandran outliers are listed below:

Mol	Chain	Res	Type
1	A	453	SER
1	E	453	SER

5.3.2 Protein sidechains [i](#)

In the following table, the Percentiles column shows the percent sidechain outliers of the chain as a percentile score with respect to all PDB entries followed by that with respect to all EM entries.

The Analysed column shows the number of residues for which the sidechain conformation was analysed, and the total number of residues.

Mol	Chain	Analysed	Rotameric	Outliers	Percentiles	
1	A	414/442 (94%)	408 (99%)	6 (1%)	67	82
1	E	414/442 (94%)	408 (99%)	6 (1%)	67	82
All	All	828/884 (94%)	816 (99%)	12 (1%)	68	82

5 of 12 residues with a non-rotameric sidechain are listed below:

Mol	Chain	Res	Type
1	E	304	GLU
1	E	404	SER
1	E	477	ARG
1	E	405	SER
1	A	405	SER

Sometimes sidechains can be flipped to improve hydrogen bonding and reduce clashes. 5 of 12 such sidechains are listed below:

Mol	Chain	Res	Type
1	E	129	ASN
1	E	278	ASN
1	E	458	ASN
1	E	339	ASN
1	A	339	ASN

5.3.3 RNA [i](#)

There are no RNA molecules in this entry.

5.4 Non-standard residues in protein, DNA, RNA chains [i](#)

There are no non-standard protein/DNA/RNA residues in this entry.

5.5 Carbohydrates [i](#)

There are no monosaccharides in this entry.

5.6 Ligand geometry [i](#)

Of 6 ligands modelled in this entry, 6 are monoatomic - leaving 0 for Mogul analysis.

There are no bond length outliers.

There are no bond angle outliers.

There are no chirality outliers.

There are no torsion outliers.

There are no ring outliers.

No monomer is involved in short contacts.

5.7 Other polymers [i](#)

There are no such residues in this entry.

5.8 Polymer linkage issues [i](#)

There are no chain breaks in this entry.

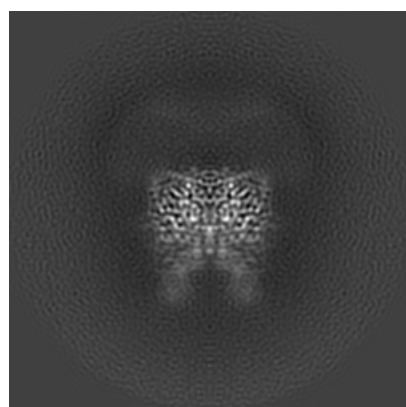
6 Map visualisation [i](#)

This section contains visualisations of the EMDB entry EMD-20453. These allow visual inspection of the internal detail of the map and identification of artifacts.

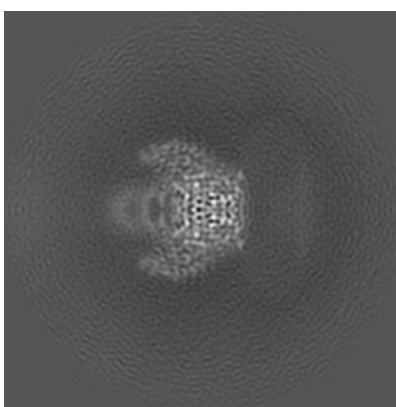
No raw map or half-maps were deposited for this entry and therefore no images, graphs, etc. pertaining to the raw map can be shown.

6.1 Orthogonal projections [i](#)

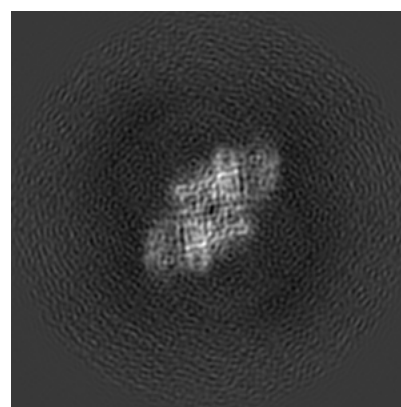
6.1.1 Primary map



X



Y

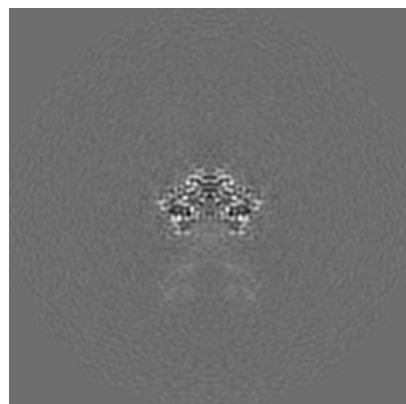


Z

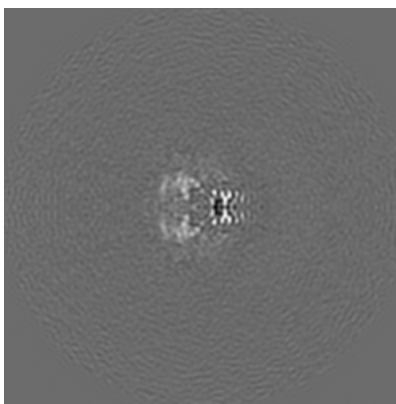
The images above show the map projected in three orthogonal directions.

6.2 Central slices [i](#)

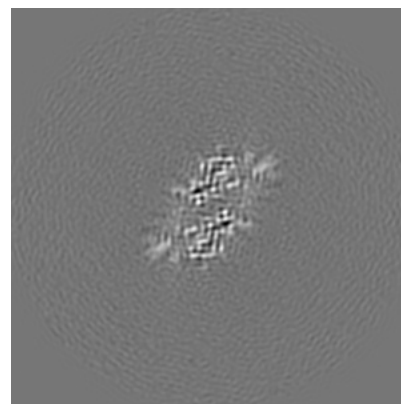
6.2.1 Primary map



X Index: 128



Y Index: 128

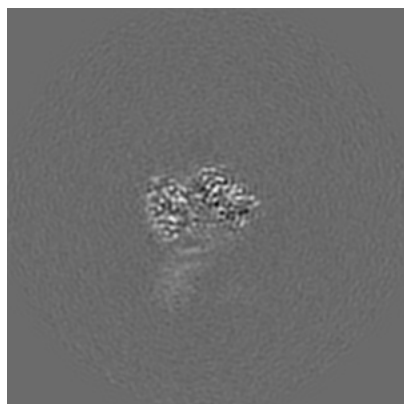


Z Index: 128

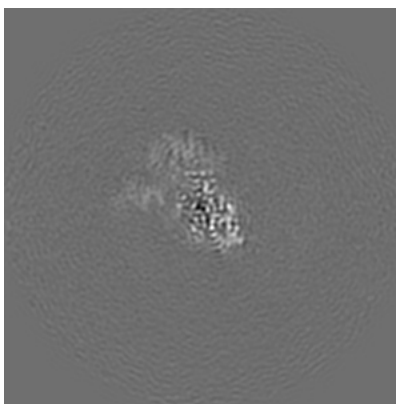
The images above show central slices of the map in three orthogonal directions.

6.3 Largest variance slices [i](#)

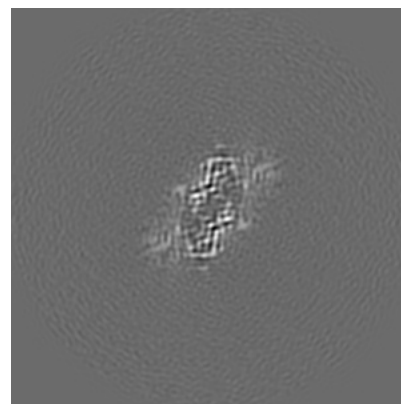
6.3.1 Primary map



X Index: 123



Y Index: 142



Z Index: 127

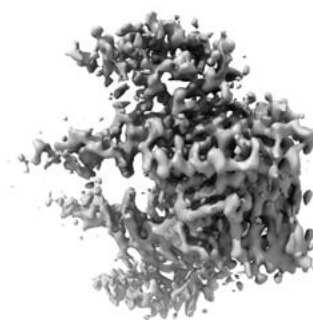
The images above show the largest variance slices of the map in three orthogonal directions.

6.4 Orthogonal surface views [i](#)

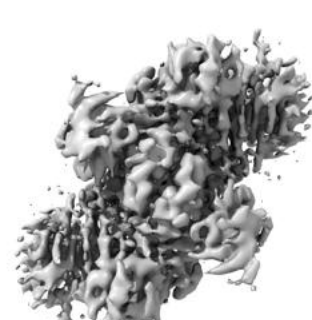
6.4.1 Primary map



X



Y



Z

The images above show the 3D surface view of the map at the recommended contour level 0.0213. These images, in conjunction with the slice images, may facilitate assessment of whether an appropriate contour level has been provided.

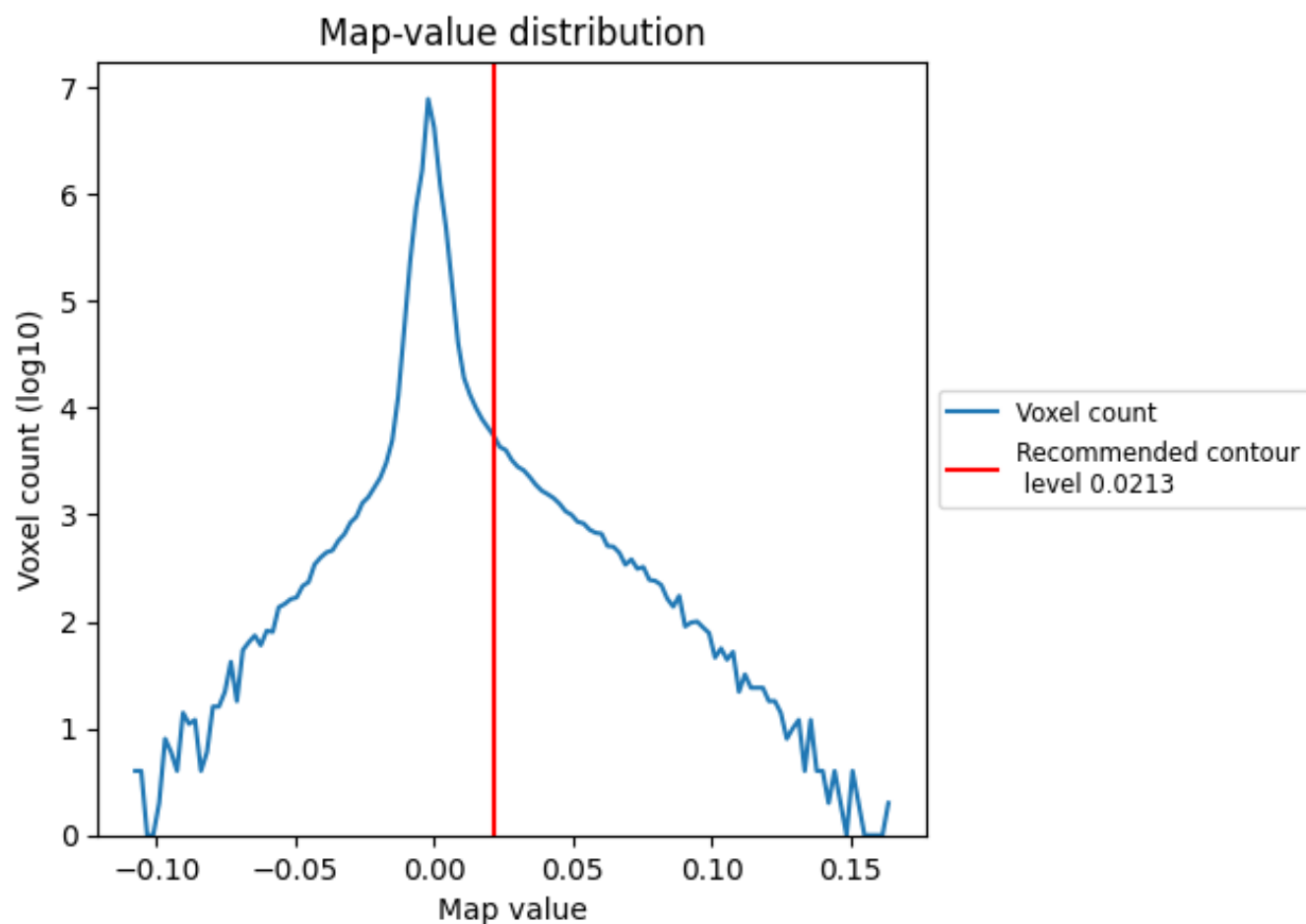
6.5 Mask visualisation

This section was not generated. No masks/segmentation were deposited.

7 Map analysis [i](#)

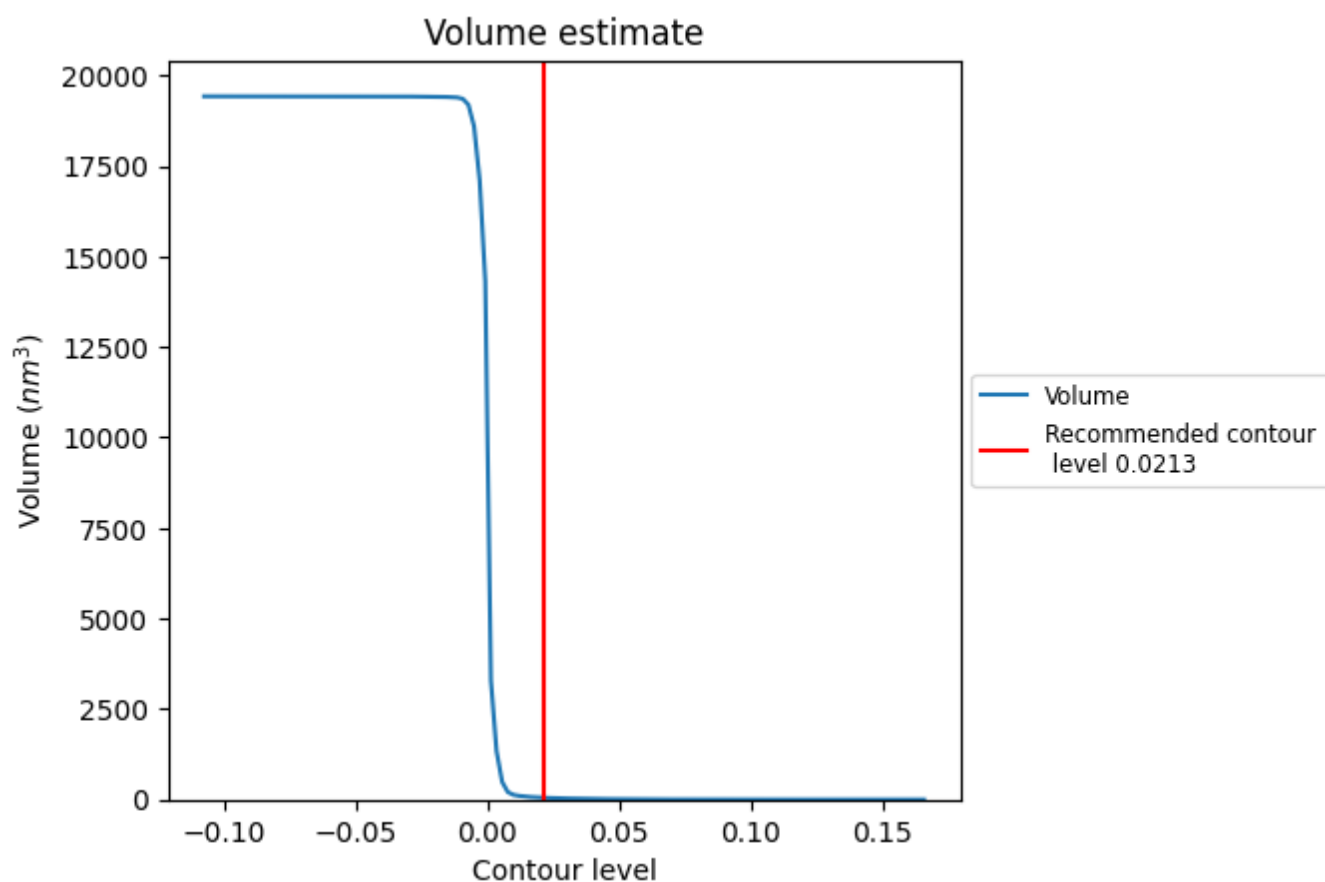
This section contains the results of statistical analysis of the map.

7.1 Map-value distribution [i](#)



The map-value distribution is plotted in 128 intervals along the x-axis. The y-axis is logarithmic. A spike in this graph at zero usually indicates that the volume has been masked.

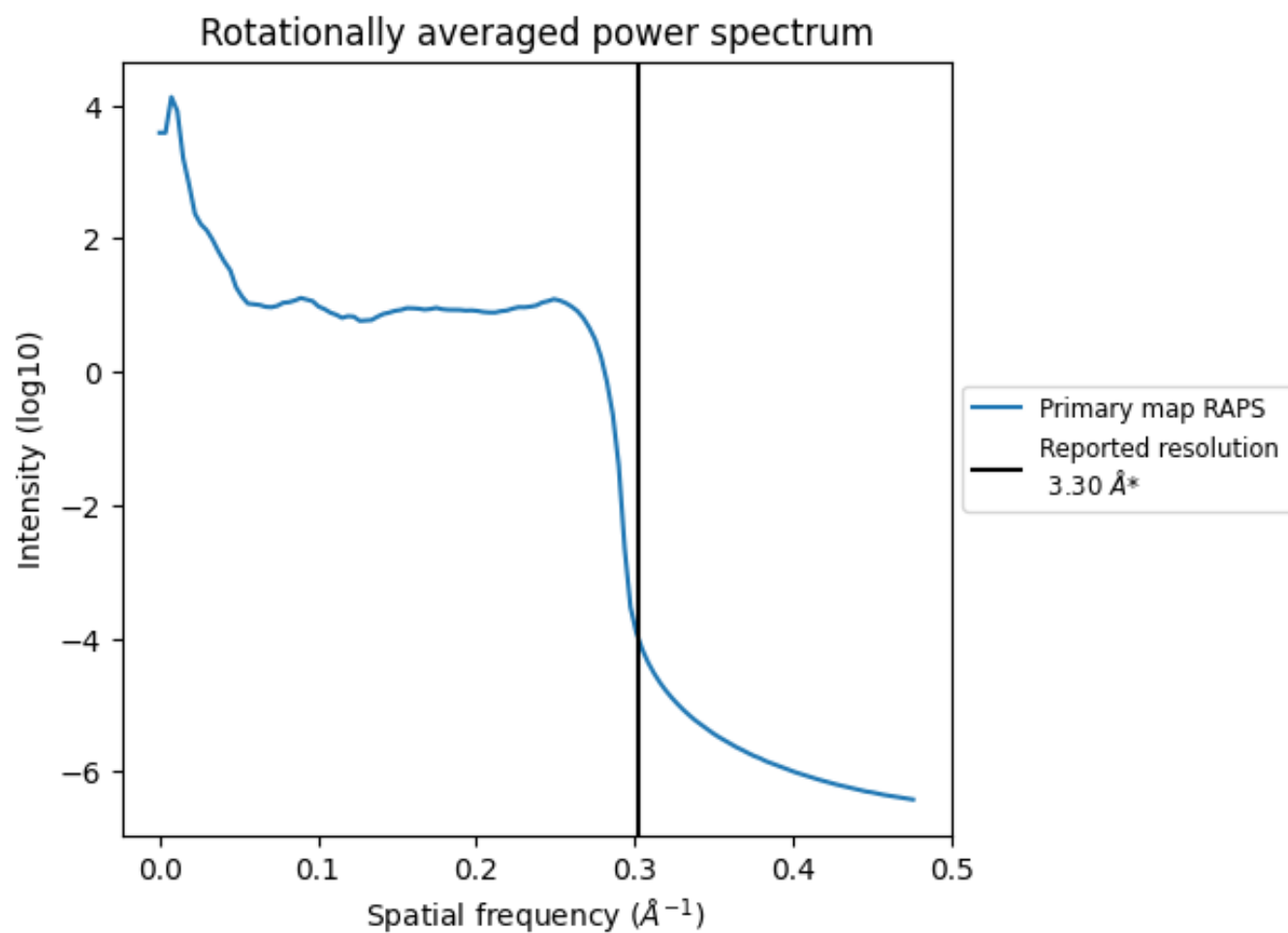
7.2 Volume estimate [i](#)



The volume at the recommended contour level is 51 nm³; this corresponds to an approximate mass of 46 kDa.

The volume estimate graph shows how the enclosed volume varies with the contour level. The recommended contour level is shown as a vertical line and the intersection between the line and the curve gives the volume of the enclosed surface at the given level.

7.3 Rotationally averaged power spectrum ⓘ



*Reported resolution corresponds to spatial frequency of 0.303 Å⁻¹

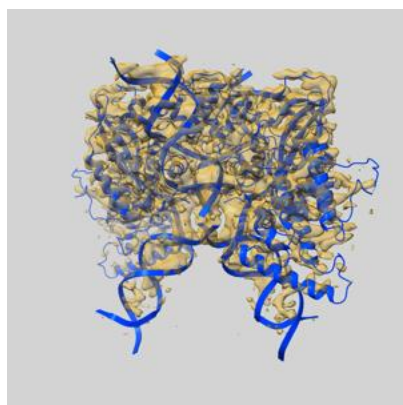
8 Fourier-Shell correlation

This section was not generated. No FSC curve or half-maps provided.

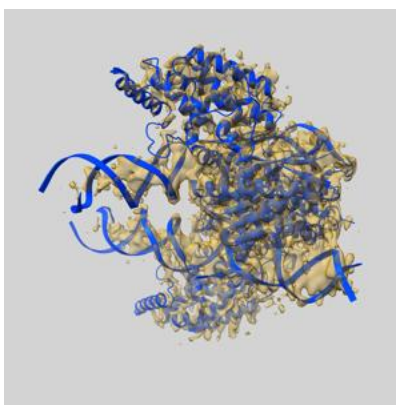
9 Map-model fit [i](#)

This section contains information regarding the fit between EMDB map EMD-20453 and PDB model 6PQU. Per-residue inclusion information can be found in [section 3](#) on [page 5](#).

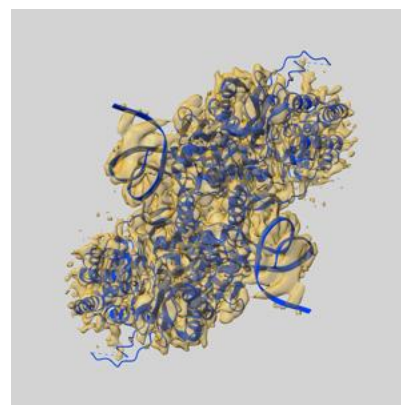
9.1 Map-model overlay [i](#)



X



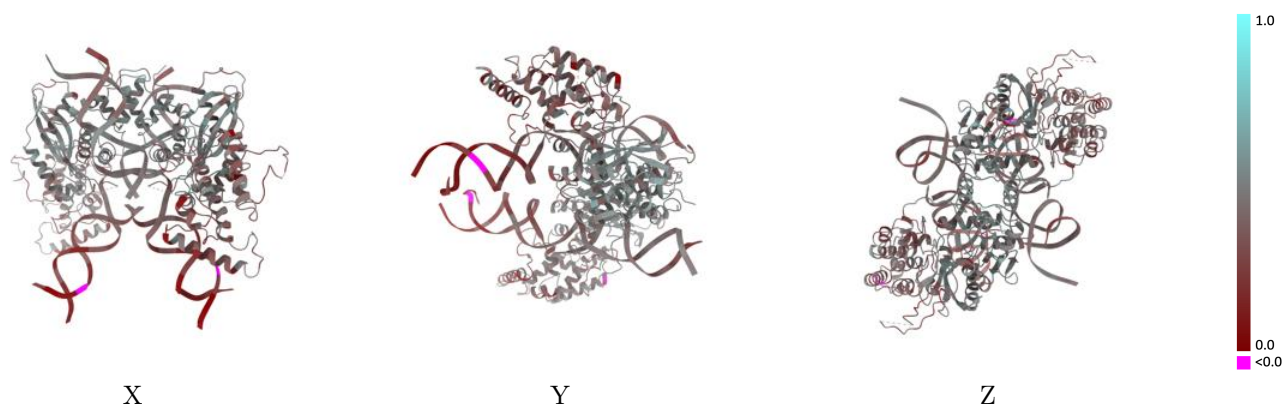
Y



Z

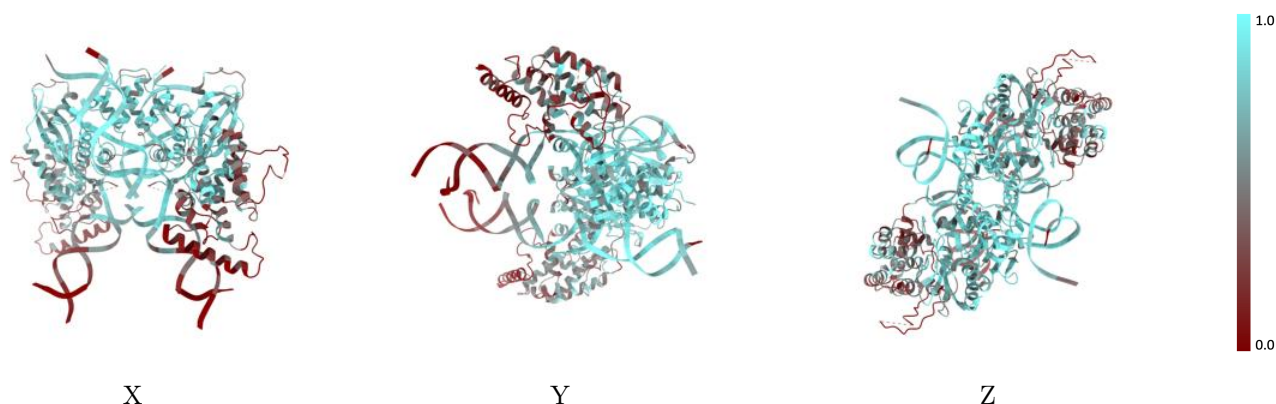
The images above show the 3D surface view of the map at the recommended contour level 0.0213 at 50% transparency in yellow overlaid with a ribbon representation of the model coloured in blue. These images allow for the visual assessment of the quality of fit between the atomic model and the map.

9.2 Q-score mapped to coordinate model [i](#)



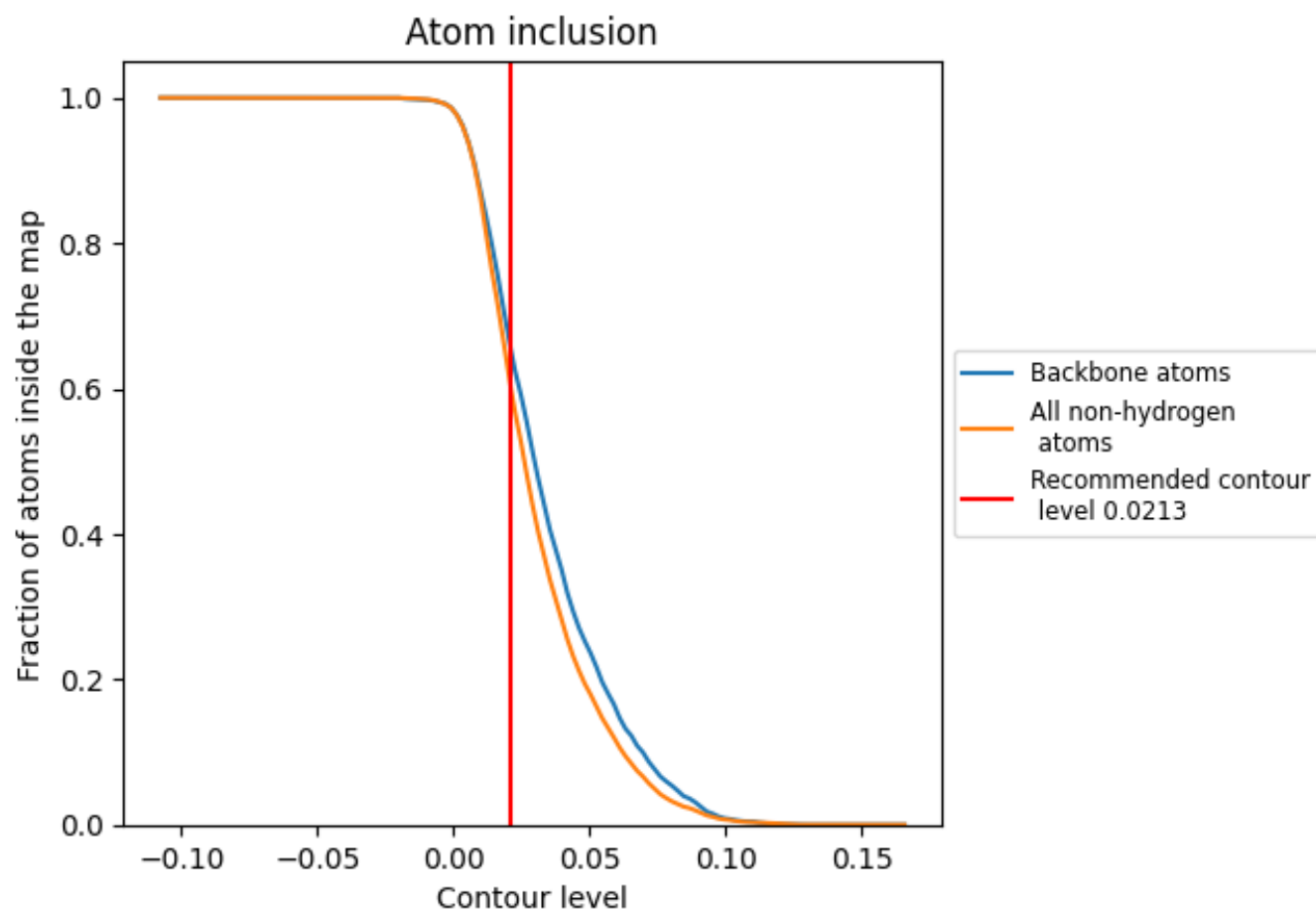
The images above show the model with each residue coloured according to its Q-score. This shows their resolvability in the map with higher Q-score values reflecting better resolvability. Please note: Q-score is calculating the resolvability of atoms, and thus high values are only expected at resolutions at which atoms can be resolved. Low Q-score values may therefore be expected for many entries.

9.3 Atom inclusion mapped to coordinate model [i](#)



The images above show the model with each residue coloured according to its atom inclusion. This shows to what extent they are inside the map at the recommended contour level (0.0213).

9.4 Atom inclusion [i](#)



At the recommended contour level, 65% of all backbone atoms, 60% of all non-hydrogen atoms, are inside the map.

9.5 Map-model fit summary ⓘ

The table lists the average atom inclusion at the recommended contour level (0.0213) and Q-score for the entire model and for each chain.

Chain	Atom inclusion	Q-score
All	<div></div> 0.5971	<div></div> 0.4030
A	<div></div> 0.5947	<div></div> 0.4300
B	<div></div> 0.4033	<div></div> 0.2250
C	<div></div> 0.7688	<div></div> 0.4010
D	<div></div> 0.6193	<div></div> 0.3380
E	<div></div> 0.5950	<div></div> 0.4290
F	<div></div> 0.3672	<div></div> 0.2160
G	<div></div> 0.7688	<div></div> 0.3940
H	<div></div> 0.6240	<div></div> 0.3360

1.0

0.0

<0.0