



wwPDB X-ray Structure Validation Summary Report ⓘ

Jun 3, 2020 – 07:48 am BST

PDB ID : 1PSS
Title : CRYSTALLOGRAPHIC ANALYSES OF SITE-DIRECTED MUTANTS OF
THE PHOTOSYNTHETIC REACTION CENTER FROM RHODOBACTER
SPHAEROIDES
Authors : Chirino, A.J.; Feher, G.; Rees, D.C.
Deposited on : 1993-12-13
Resolution : 3.00 Å(reported)

This is a wwPDB X-ray Structure Validation Summary Report for a publicly released PDB entry.

We welcome your comments at validation@mail.wwpdb.org

A user guide is available at

<https://www.wwpdb.org/validation/2017/XrayValidationReportHelp>

with specific help available everywhere you see the ⓘ symbol.

The following versions of software and data (see [references ⓘ](#)) were used in the production of this report:

MolProbity	:	4.02b-467
Mogul	:	1.8.5 (274361), CSD as541be (2020)
Xtriage (Phenix)	:	NOT EXECUTED
EDS	:	NOT EXECUTED
buster-report	:	1.1.7 (2018)
Percentile statistics	:	20191225.v01 (using entries in the PDB archive December 25th 2019)
Ideal geometry (proteins)	:	Engh & Huber (2001)
Ideal geometry (DNA, RNA)	:	Parkinson et al. (1996)
Validation Pipeline (wwPDB-VP)	:	2.11

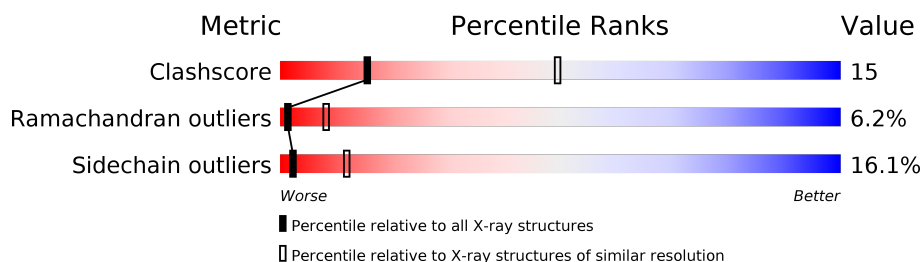
1 Overall quality at a glance

The following experimental techniques were used to determine the structure:

X-RAY DIFFRACTION

The reported resolution of this entry is 3.00 Å.

Percentile scores (ranging between 0-100) for global validation metrics of the entry are shown in the following graphic. The table shows the number of entries on which the scores are based.



Metric	Whole archive (#Entries)	Similar resolution (#Entries, resolution range(Å))
Clashscore	141614	2416 (3.00-3.00)
Ramachandran outliers	138981	2333 (3.00-3.00)
Sidechain outliers	138945	2336 (3.00-3.00)

The table below summarises the geometric issues observed across the polymeric chains and their fit to the electron density. The red, orange, yellow and green segments on the lower bar indicate the fraction of residues that contain outliers for ≥ 3 , 2, 1 and 0 types of geometric quality criteria respectively. A grey segment represents the fraction of residues that are not modelled. The numeric value for each fraction is indicated below the corresponding segment, with a dot representing fractions $\leq 5\%$.

Note EDS was not executed.

Mol	Chain	Length	Quality of chain
1	L	266	
2	M	296	
3	H	237	

The following table lists non-polymeric compounds, carbohydrate monomers and non-standard residues in protein, DNA, RNA chains that are outliers for geometric or electron-density-fit criteria:

Mol	Type	Chain	Res	Chirality	Geometry	Clashes	Electron density
4	BCL	M	3	X	-	-	-
5	BPH	L	271	X	-	-	-
8	CRT	M	304	-	X	-	-

2 Entry composition [i](#)

There are 8 unique types of molecules in this entry. The entry contains 6789 atoms, of which 0 are hydrogens and 0 are deuteriums.

In the tables below, the ZeroOcc column contains the number of atoms modelled with zero occupancy, the AltConf column contains the number of residues with at least one atom in alternate conformation and the Trace column contains the number of residues modelled with at most 2 atoms.

- Molecule 1 is a protein called PHOTOSYNTHETIC REACTION CENTER.

Mol	Chain	Residues	Atoms					ZeroOcc	AltConf	Trace
1	L	266	Total	C	N	O	S	0	0	0
			2121	1433	336	344	8			

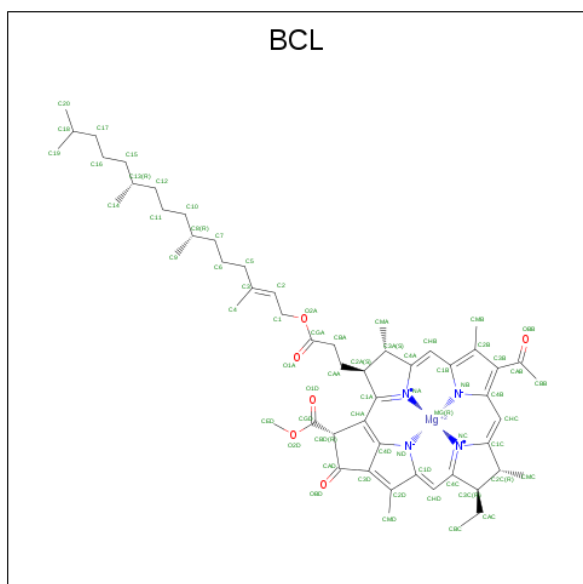
- Molecule 2 is a protein called PHOTOSYNTHETIC REACTION CENTER.

Mol	Chain	Residues	Atoms					ZeroOcc	AltConf	Trace
2	M	296	Total	C	N	O	S	0	0	0
			2362	1579	386	387	10			

- Molecule 3 is a protein called PHOTOSYNTHETIC REACTION CENTER.

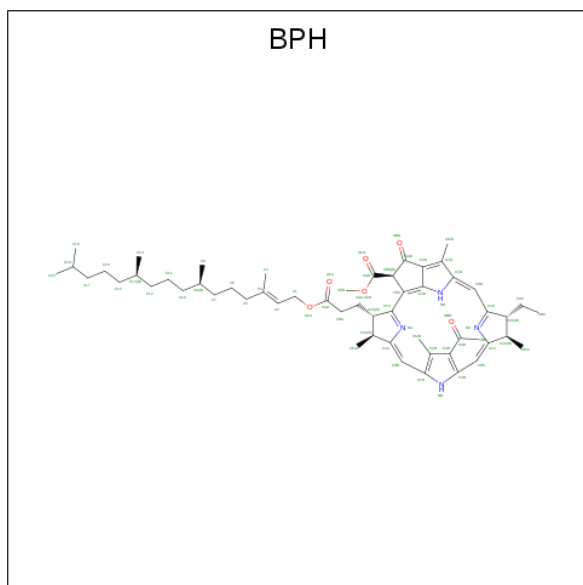
Mol	Chain	Residues	Atoms					ZeroOcc	AltConf	Trace
3	H	237	Total	C	N	O	S	0	0	0
			1807	1156	310	332	9			

- Molecule 4 is BACTERIOCHLOROPHYLL A (three-letter code: BCL) (formula: $C_{55}H_{74}MgN_4O_6$).



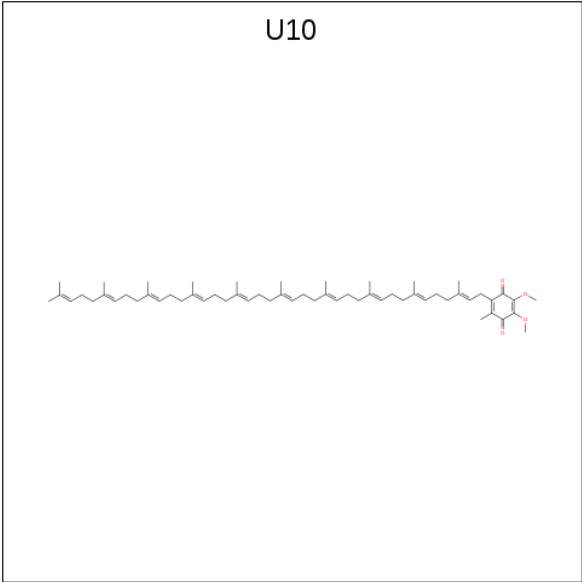
Mol	Chain	Residues	Atoms					ZeroOcc	AltConf
4	L	1	Total 66	C 55	Mg 1	N 4	O 6	0	0
4	M	1	Total 51	C 40	Mg 1	N 4	O 6	0	0
4	M	1	Total 66	C 55	Mg 1	N 4	O 6	0	0
4	M	1	Total 51	C 40	Mg 1	N 4	O 6	0	0

- Molecule 5 is BACTERIOPHEOPHYTIN A (three-letter code: BPH) (formula: $C_{55}H_{76}N_4O_6$).



Mol	Chain	Residues	Atoms				ZeroOcc	AltConf
5	L	1	Total	C	N	O	0	0
			65	55	4	6		
5	M	1	Total	C	N	O	0	0
			65	55	4	6		

- Molecule 6 is UBIQUINONE-10 (three-letter code: U10) (formula: $C_{59}H_{90}O_4$).

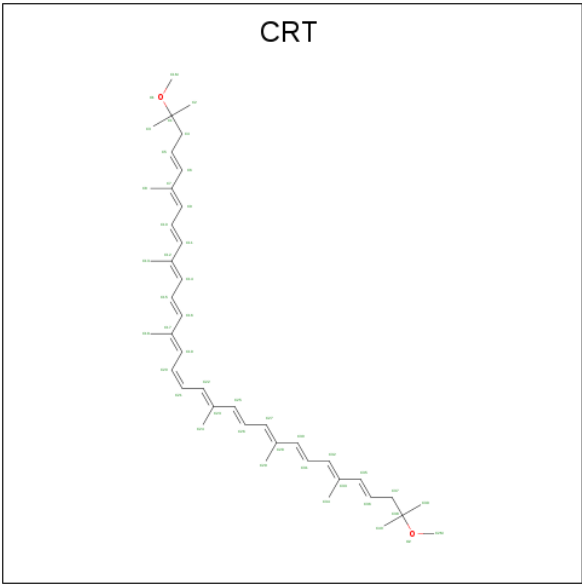


Mol	Chain	Residues	Atoms			ZeroOcc	AltConf
6	L	1	Total	C	O	0	0
			41	37	4		
6	M	1	Total	C	O	0	0
			51	47	4		

- Molecule 7 is FE (III) ION (three-letter code: FE) (formula: Fe).

Mol	Chain	Residues	Atoms		ZeroOcc	AltConf
7	M	1	Total	Fe	0	0
			1	1		

- Molecule 8 is SPIRILLOXANTHIN (three-letter code: CRT) (formula: C₄₂H₆₀O₂).



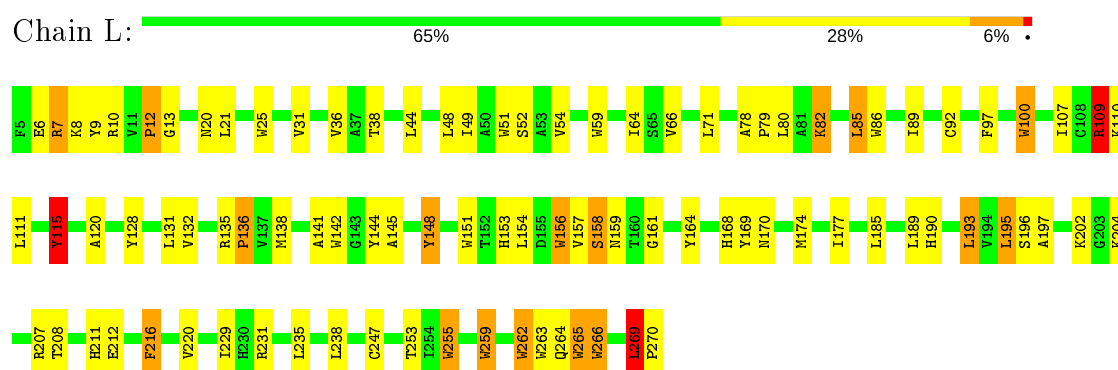
Mol	Chain	Residues	Atoms			ZeroOcc	AltConf
8	M	1	Total	C	O	0	0
			42	41	1		

3 Residue-property plots

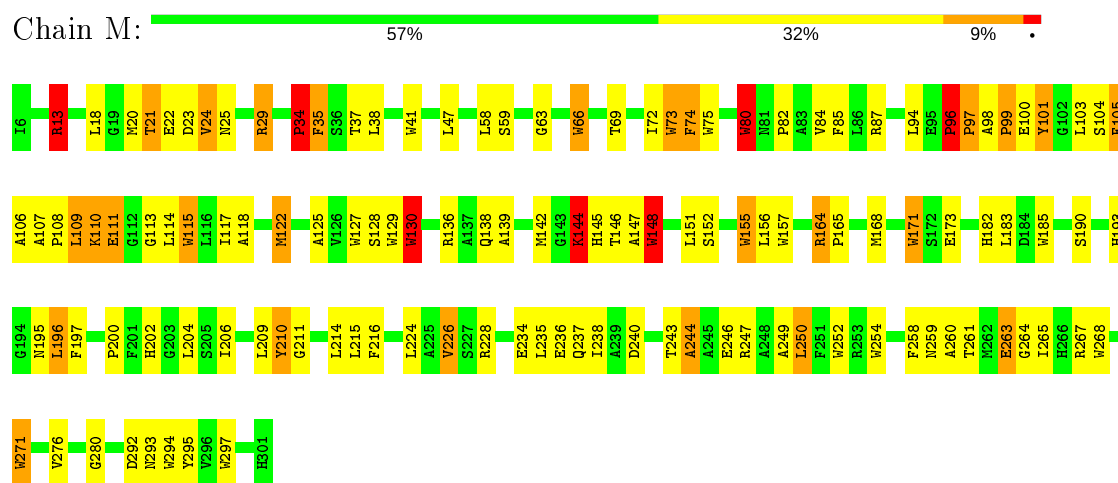
These plots are drawn for all protein, RNA and DNA chains in the entry. The first graphic for a chain summarises the proportions of the various outlier classes displayed in the second graphic. The second graphic shows the sequence view annotated by issues in geometry. Residues are color-coded according to the number of geometric quality criteria for which they contain at least one outlier: green = 0, yellow = 1, orange = 2 and red = 3 or more. Stretches of 2 or more consecutive residues without any outlier are shown as a green connector. Residues present in the sample, but not in the model, are shown in grey.

Note EDS was not executed.

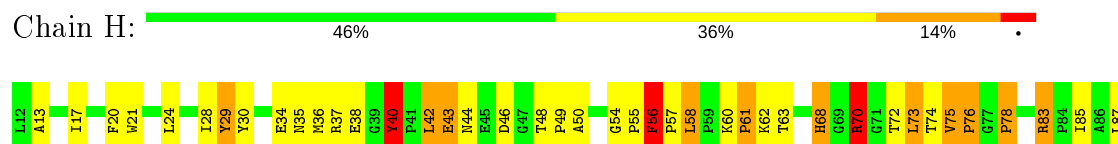
• Molecule 1: PHOTOSYNTHETIC REACTION CENTER

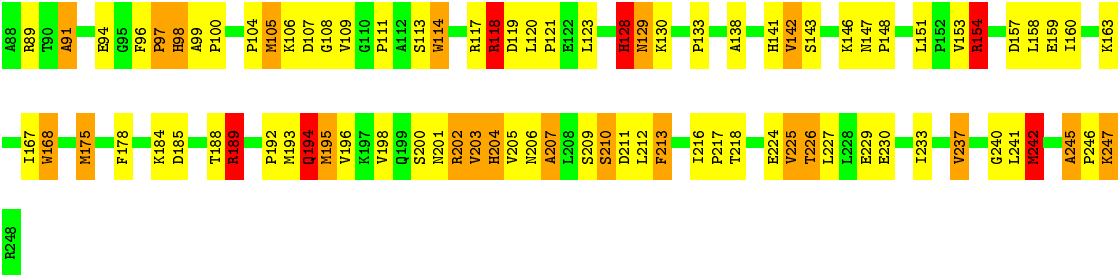


• Molecule 2: PHOTOSYNTHETIC REACTION CENTER



• Molecule 3: PHOTOSYNTHETIC REACTION CENTER





4 Data and refinement statistics

Xtriage (Phenix) and EDS were not executed - this section is therefore incomplete.

Property	Value	Source
Space group	P 21 21 21	Depositor
Cell constants a, b, c, α , β , γ	138.00 Å 77.50 Å 141.80 Å 90.00° 90.00° 90.00°	Depositor
Resolution (Å)	(Not available) – 3.00	Depositor
% Data completeness (in resolution range)	(Not available) ((Not available)-3.00)	Depositor
R_{merge}	(Not available)	Depositor
R_{sym}	(Not available)	Depositor
Refinement program	X-PLOR	Depositor
R, R_{free}	0.223 , (Not available)	Depositor
Estimated twinning fraction	No twinning to report.	Xtriage
Total number of atoms	6789	wwPDB-VP
Average B, all atoms (Å ²)	29.0	wwPDB-VP

5 Model quality ⓘ

5.1 Standard geometry ⓘ

Bond lengths and bond angles in the following residue types are not validated in this section: BCL, BPH, FE, CRT, U10

The Z score for a bond length (or angle) is the number of standard deviations the observed value is removed from the expected value. A bond length (or angle) with $|Z| > 5$ is considered an outlier worth inspection. RMSZ is the root-mean-square of all Z scores of the bond lengths (or angles).

Mol	Chain	Bond lengths		Bond angles	
		RMSZ	$\# Z > 5$	RMSZ	$\# Z > 5$
1	L	0.84	0/2204	1.63	51/3014 (1.7%)
2	M	0.92	0/2453	1.79	83/3348 (2.5%)
3	H	0.81	0/1855	1.69	33/2523 (1.3%)
All	All	0.86	0/6512	1.71	167/8885 (1.9%)

Chiral center outliers are detected by calculating the chiral volume of a chiral center and verifying if the center is modelled as a planar moiety or with the opposite hand. A planarity outlier is detected by checking planarity of atoms in a peptide group, atoms in a mainchain group or atoms of a sidechain that are expected to be planar.

Mol	Chain	#Chirality outliers	#Planarity outliers
1	L	0	1
2	M	0	1
3	H	0	2
All	All	0	4

There are no bond length outliers.

The worst 5 of 167 bond angle outliers are listed below:

Mol	Chain	Res	Type	Atoms	Z	Observed(°)	Ideal(°)
2	M	13	ARG	NE-CZ-NH1	13.43	127.01	120.30
2	M	41	TRP	CD1-CG-CD2	9.38	113.81	106.30
2	M	171	TRP	CD1-CG-CD2	9.22	113.67	106.30
1	L	262	TRP	CD1-CG-CD2	9.06	113.55	106.30
1	L	142	TRP	CD1-CG-CD2	8.96	113.46	106.30

There are no chirality outliers.

All (4) planarity outliers are listed below:

Mol	Chain	Res	Type	Group
3	H	245	ALA	Peptide
3	H	83	ARG	Peptide
1	L	269	LEU	Peptide
2	M	96	PRO	Peptide

5.2 Too-close contacts

In the following table, the Non-H and H(model) columns list the number of non-hydrogen atoms and hydrogen atoms in the chain respectively. The H(added) column lists the number of hydrogen atoms added and optimized by MolProbity. The Clashes column lists the number of clashes within the asymmetric unit, whereas Symm-Clashes lists symmetry related clashes.

Mol	Chain	Non-H	H(model)	H(added)	Clashes	Symm-Clashes
1	L	2121	0	2077	59	0
2	M	2362	0	2281	74	0
3	H	1807	0	1814	66	0
4	L	66	0	74	16	0
4	M	168	0	156	18	0
5	L	65	0	76	5	0
5	M	65	0	76	3	0
6	L	41	0	52	3	0
6	M	51	0	68	8	0
7	M	1	0	0	0	0
8	M	42	0	57	1	0
All	All	6789	0	6731	200	0

The all-atom clashscore is defined as the number of clashes found per 1000 atoms (including hydrogen atoms). The all-atom clashscore for this structure is 15.

The worst 5 of 200 close contacts within the same asymmetric unit are listed below, sorted by their clash magnitude.

Atom-1	Atom-2	Interatomic distance (Å)	Clash overlap (Å)
1:L:111:LEU:HD21	2:M:250:LEU:HD12	1.44	0.99
2:M:264:GLY:HA2	2:M:267:ARG:HG3	1.63	0.80
3:H:204:HIS:HB3	3:H:206:ASN:OD1	1.86	0.76
3:H:87:LEU:HG	3:H:98:HIS:HB3	1.68	0.75
3:H:61:PRO:HA	3:H:76:PRO:HG2	1.72	0.72

There are no symmetry-related clashes.

5.3 Torsion angles

5.3.1 Protein backbone

In the following table, the Percentiles column shows the percent Ramachandran outliers of the chain as a percentile score with respect to all X-ray entries followed by that with respect to entries of similar resolution.

The Analysed column shows the number of residues for which the backbone conformation was analysed, and the total number of residues.

Mol	Chain	Analysed	Favoured	Allowed	Outliers	Percentiles	
1	L	264/266 (99%)	236 (89%)	21 (8%)	7 (3%)	5	26
2	M	294/296 (99%)	245 (83%)	32 (11%)	17 (6%)	1	10
3	H	235/237 (99%)	173 (74%)	37 (16%)	25 (11%)	0	2
All	All	793/799 (99%)	654 (82%)	90 (11%)	49 (6%)	1	8

5 of 49 Ramachandran outliers are listed below:

Mol	Chain	Res	Type
1	L	115	TYR
1	L	269	LEU
2	M	21	THR
2	M	24	VAL
2	M	34	PRO

5.3.2 Protein sidechains

In the following table, the Percentiles column shows the percent sidechain outliers of the chain as a percentile score with respect to all X-ray entries followed by that with respect to entries of similar resolution.

The Analysed column shows the number of residues for which the sidechain conformation was analysed, and the total number of residues.

Mol	Chain	Analysed	Rotameric	Outliers	Percentiles	
1	L	210/210 (100%)	185 (88%)	25 (12%)	5	22
2	M	232/232 (100%)	203 (88%)	29 (12%)	4	20
3	H	192/192 (100%)	144 (75%)	48 (25%)	0	3
All	All	634/634 (100%)	532 (84%)	102 (16%)	2	12

5 of 102 residues with a non-rotameric sidechain are listed below:

Mol	Chain	Res	Type
2	M	216	PHE
3	H	48	THR
3	H	213	PHE
2	M	226	VAL
2	M	259	ASN

Some sidechains can be flipped to improve hydrogen bonding and reduce clashes. All (2) such sidechains are listed below:

Mol	Chain	Res	Type
1	L	211	HIS
2	M	193	HIS

5.3.3 RNA [i](#)

There are no RNA molecules in this entry.

5.4 Non-standard residues in protein, DNA, RNA chains [i](#)

There are no non-standard protein/DNA/RNA residues in this entry.

5.5 Carbohydrates [i](#)

There are no carbohydrates in this entry.

5.6 Ligand geometry [i](#)

Of 10 ligands modelled in this entry, 1 is monoatomic - leaving 9 for Mogul analysis.

In the following table, the Counts columns list the number of bonds (or angles) for which Mogul statistics could be retrieved, the number of bonds (or angles) that are observed in the model and the number of bonds (or angles) that are defined in the Chemical Component Dictionary. The Link column lists molecule types, if any, to which the group is linked. The Z score for a bond length (or angle) is the number of standard deviations the observed value is removed from the expected value. A bond length (or angle) with $|Z| > 2$ is considered an outlier worth inspection. RMSZ is the root-mean-square of all Z scores of the bond lengths (or angles).

Mol	Type	Chain	Res	Link	Bond lengths			Bond angles		
					Counts	RMSZ	$\# Z > 2$	Counts	RMSZ	$\# Z > 2$
4	BCL	L	2	1	58,74,74	1.16	7 (12%)	69,115,115	2.03	16 (23%)
6	U10	M	303	-	51,51,63	1.63	13 (25%)	61,64,79	1.87	23 (37%)

Mol	Type	Chain	Res	Link	Bond lengths			Bond angles		
					Counts	RMSZ	# Z > 2	Counts	RMSZ	# Z > 2
8	CRT	M	304	-	40,41,43	4.18	24 (60%)	48,50,54	2.62	22 (45%)
4	BCL	M	3	2	58,74,74	1.14	6 (10%)	69,115,115	2.07	17 (24%)
6	U10	L	272	-	41,41,63	1.76	12 (29%)	49,52,79	2.24	15 (30%)
4	BCL	M	4	1	43,59,74	1.37	5 (11%)	51,97,115	2.54	15 (29%)
4	BCL	M	1	2	43,59,74	1.33	6 (13%)	51,97,115	2.19	12 (23%)
5	BPH	M	5	-	64,70,70	1.21	7 (10%)	76,101,101	1.75	13 (17%)
5	BPH	L	271	-	64,70,70	1.16	7 (10%)	76,101,101	1.83	16 (21%)

In the following table, the Chirals column lists the number of chiral outliers, the number of chiral centers analysed, the number of these observed in the model and the number defined in the Chemical Component Dictionary. Similar counts are reported in the Torsion and Rings columns. '-' means no outliers of that kind were identified.

Mol	Type	Chain	Res	Link	Chirals	Torsions	Rings
8	CRT	M	304	-	-	19/47/47/51	-
6	U10	M	303	-	-	16/49/73/87	0/1/1/1
4	BCL	L	2	1	-	13/37/137/137	-
4	BCL	M	3	2	2/2/21/25	14/37/137/137	-
6	U10	L	272	-	-	15/37/61/87	0/1/1/1
4	BCL	M	4	1	-	0/19/119/137	-
4	BCL	M	1	2	-	6/19/119/137	-
5	BPH	M	5	-	-	16/54/105/105	0/5/6/6
5	BPH	L	271	-	1/1/18/22	10/54/105/105	0/5/6/6

The worst 5 of 87 bond length outliers are listed below:

Mol	Chain	Res	Type	Atoms	Z	Observed(Å)	Ideal(Å)
8	M	304	CRT	C6-C5	8.70	1.54	1.32
8	M	304	CRT	C26-C25	8.52	1.56	1.34
8	M	304	CRT	C35-C36	8.47	1.54	1.32
8	M	304	CRT	C15-C16	8.04	1.55	1.34
8	M	304	CRT	C10-C11	7.84	1.54	1.34

The worst 5 of 149 bond angle outliers are listed below:

Mol	Chain	Res	Type	Atoms	Z	Observed(°)	Ideal(°)
4	M	4	BCL	C4D-C3D-CAD	-10.20	102.78	108.47
4	M	3	BCL	C4D-C3D-CAD	-9.54	103.15	108.47
4	L	2	BCL	C4D-C3D-CAD	-9.51	103.17	108.47

Continued on next page...

Continued from previous page...

Mol	Chain	Res	Type	Atoms	Z	Observed(°)	Ideal(°)
6	L	272	U10	C7-C6-C5	9.27	129.64	118.48
4	M	1	BCL	C4D-C3D-CAD	-9.10	103.39	108.47

All (3) chirality outliers are listed below:

Mol	Chain	Res	Type	Atom
4	M	3	BCL	C8
4	M	3	BCL	C13
5	L	271	BPH	C8

5 of 109 torsion outliers are listed below:

Mol	Chain	Res	Type	Atoms
4	L	2	BCL	C2C-C3C-CAC-CBC
4	L	2	BCL	C4C-C3C-CAC-CBC
6	M	303	U10	C1-C6-C7-C8
6	M	303	U10	C5-C6-C7-C8
6	M	303	U10	C28-C29-C31-C32

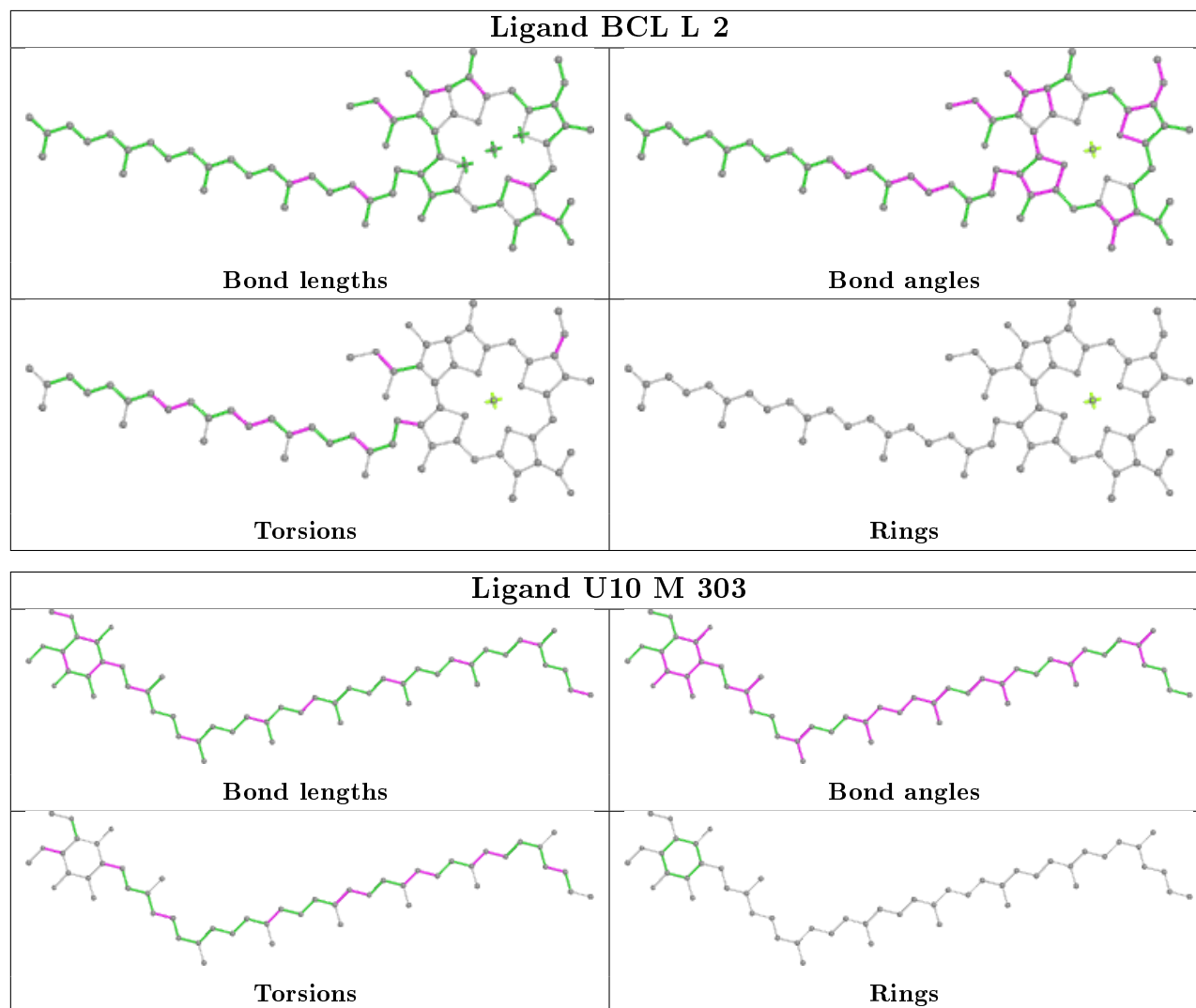
There are no ring outliers.

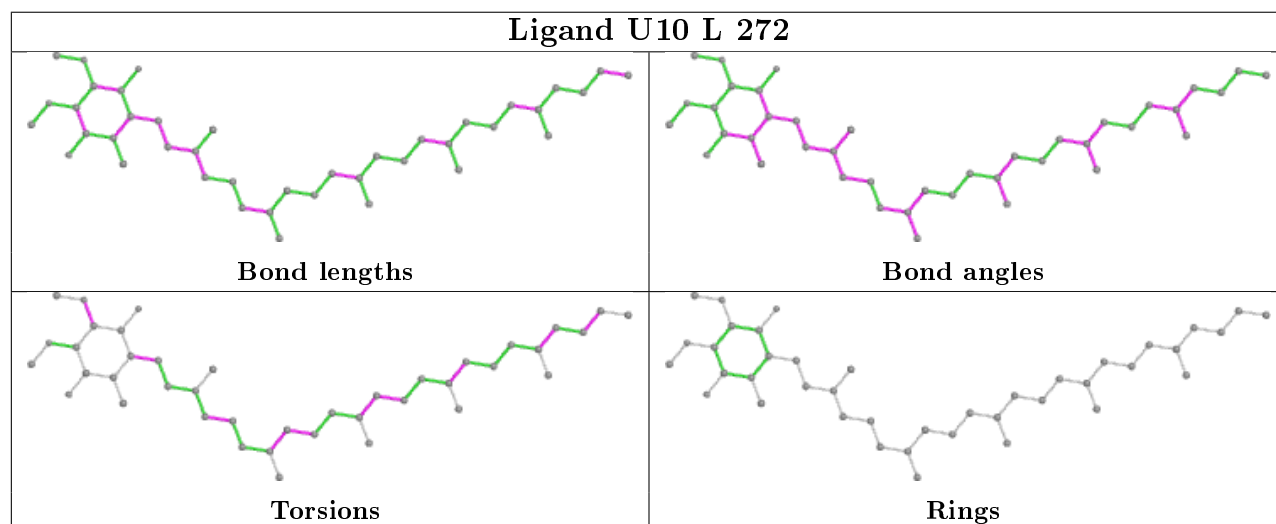
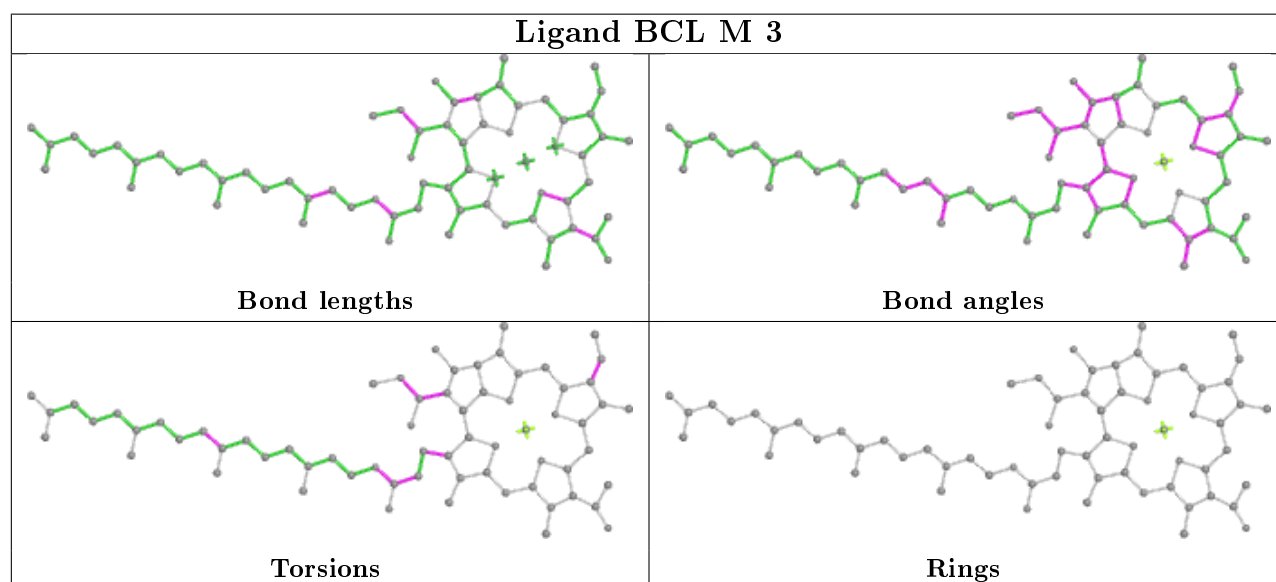
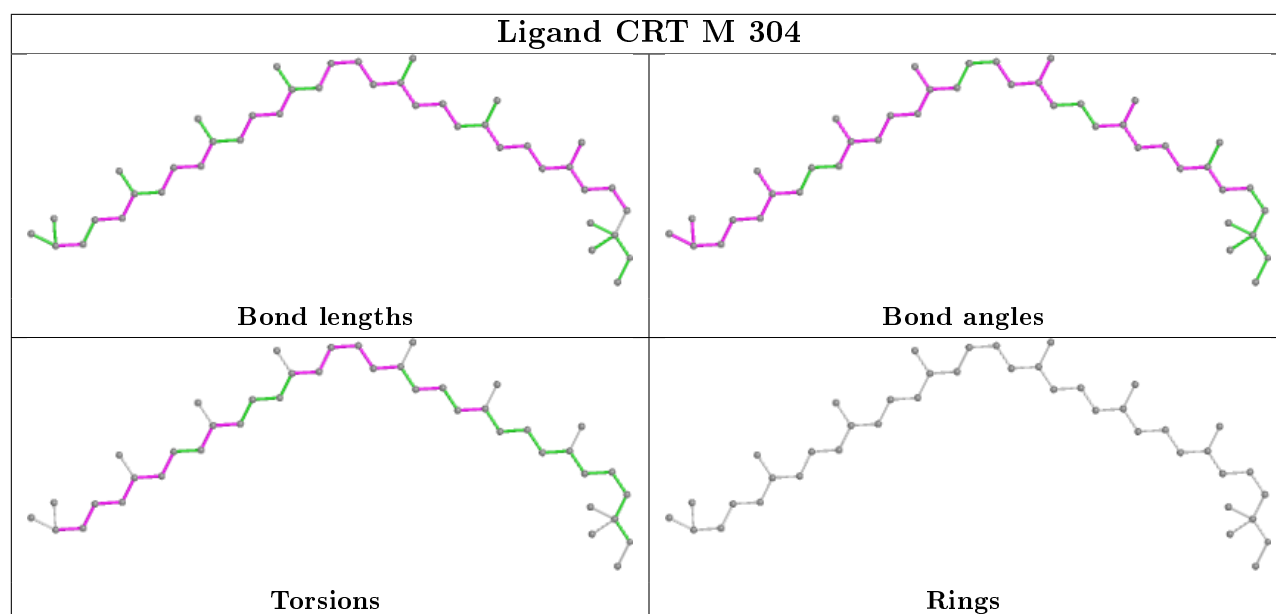
9 monomers are involved in 47 short contacts:

Mol	Chain	Res	Type	Clashes	Symm-Clashes
4	L	2	BCL	16	0
6	M	303	U10	8	0
8	M	304	CRT	1	0
4	M	3	BCL	11	0
6	L	272	U10	3	0
4	M	4	BCL	4	0
4	M	1	BCL	4	0
5	M	5	BPH	3	0
5	L	271	BPH	5	0

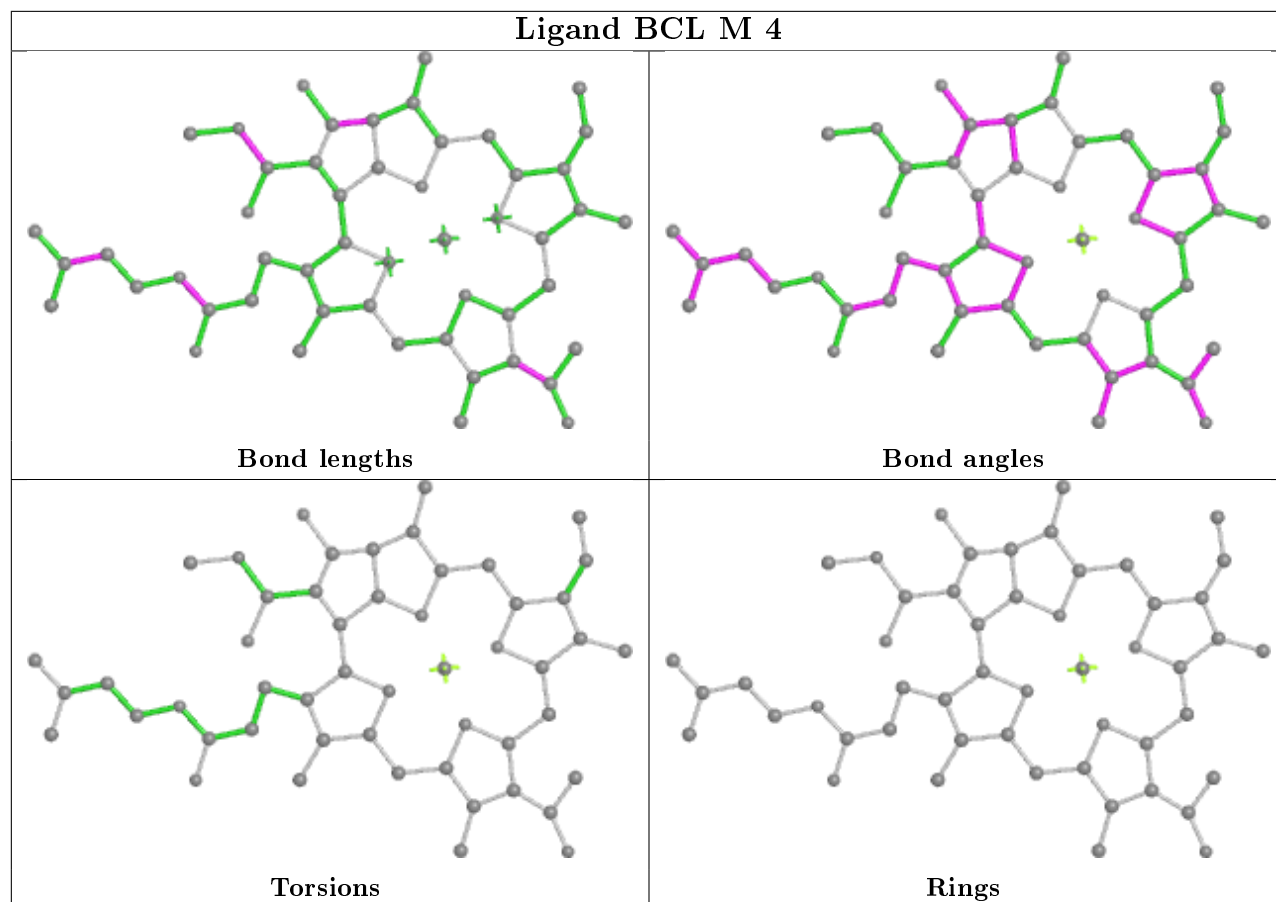
The following is a two-dimensional graphical depiction of Mogul quality analysis of bond lengths, bond angles, torsion angles, and ring geometry for all instances of the Ligand of Interest. In addition, ligands with molecular weight > 250 and outliers as shown on the validation Tables will also be included. For torsion angles, if less than 5% of the Mogul distribution of torsion angles is within 10 degrees of the torsion angle in question, then that torsion angle is considered an outlier. Any bond that is central to one or more torsion angles identified as an outlier by Mogul will be highlighted in the graph. For rings, the root-mean-square deviation (RMSD) between the ring in question and similar rings identified by Mogul is calculated over all ring torsion angles. If the average RMSD is greater than 60 degrees and the minimal RMSD between the ring in question and

any Mogul-identified rings is also greater than 60 degrees, then that ring is considered an outlier. The outliers are highlighted in purple. The color gray indicates Mogul did not find sufficient equivalents in the CSD to analyse the geometry.

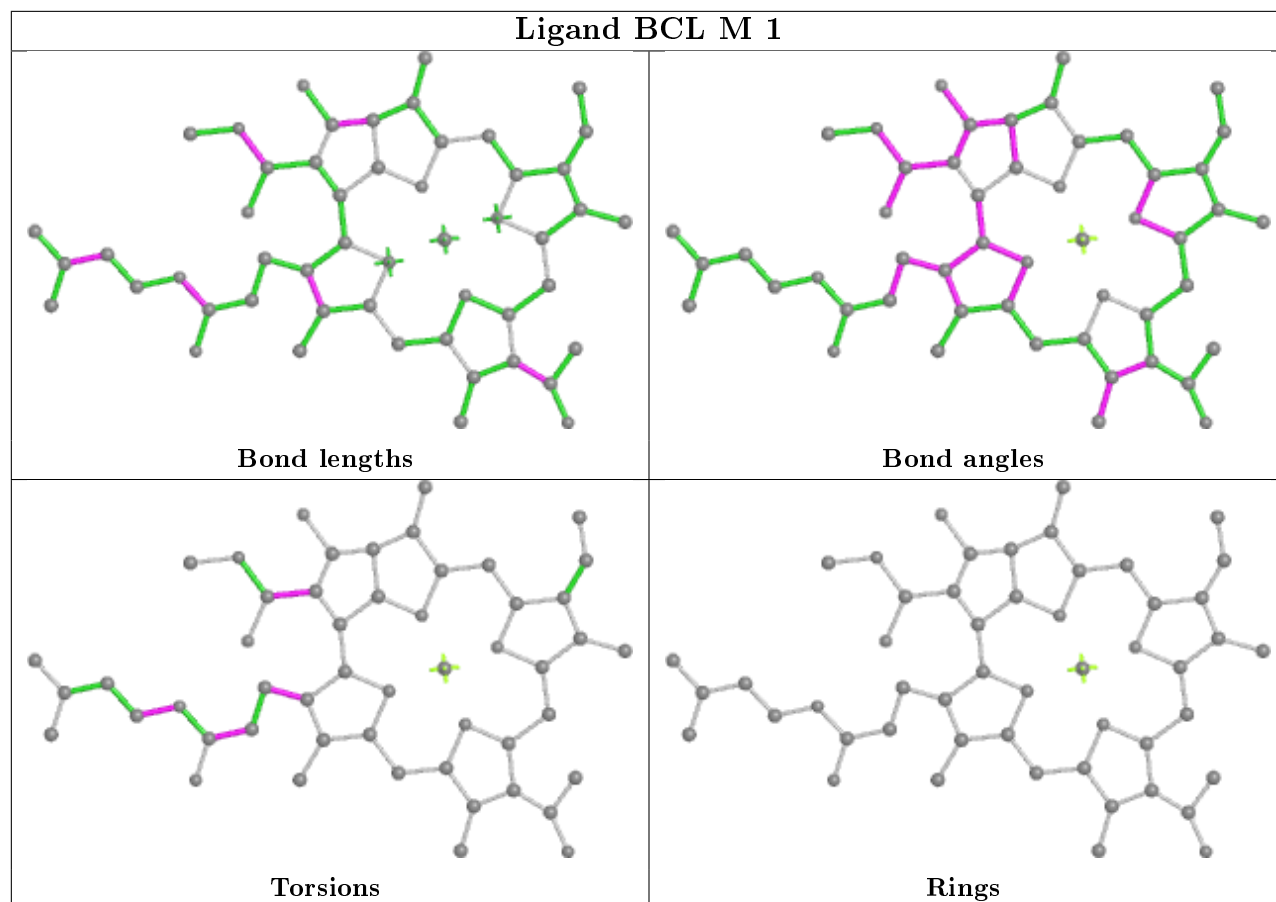




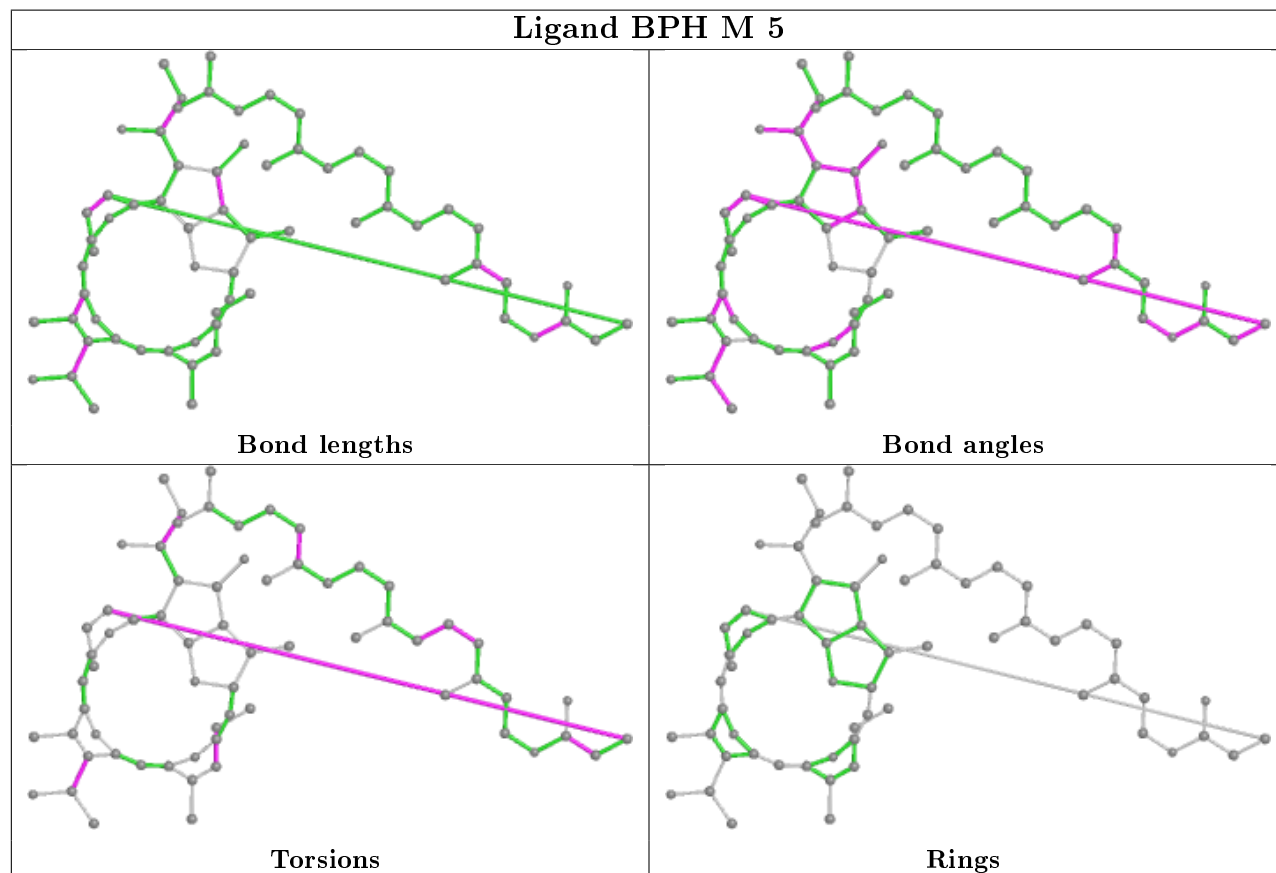
Ligand BCL M 4

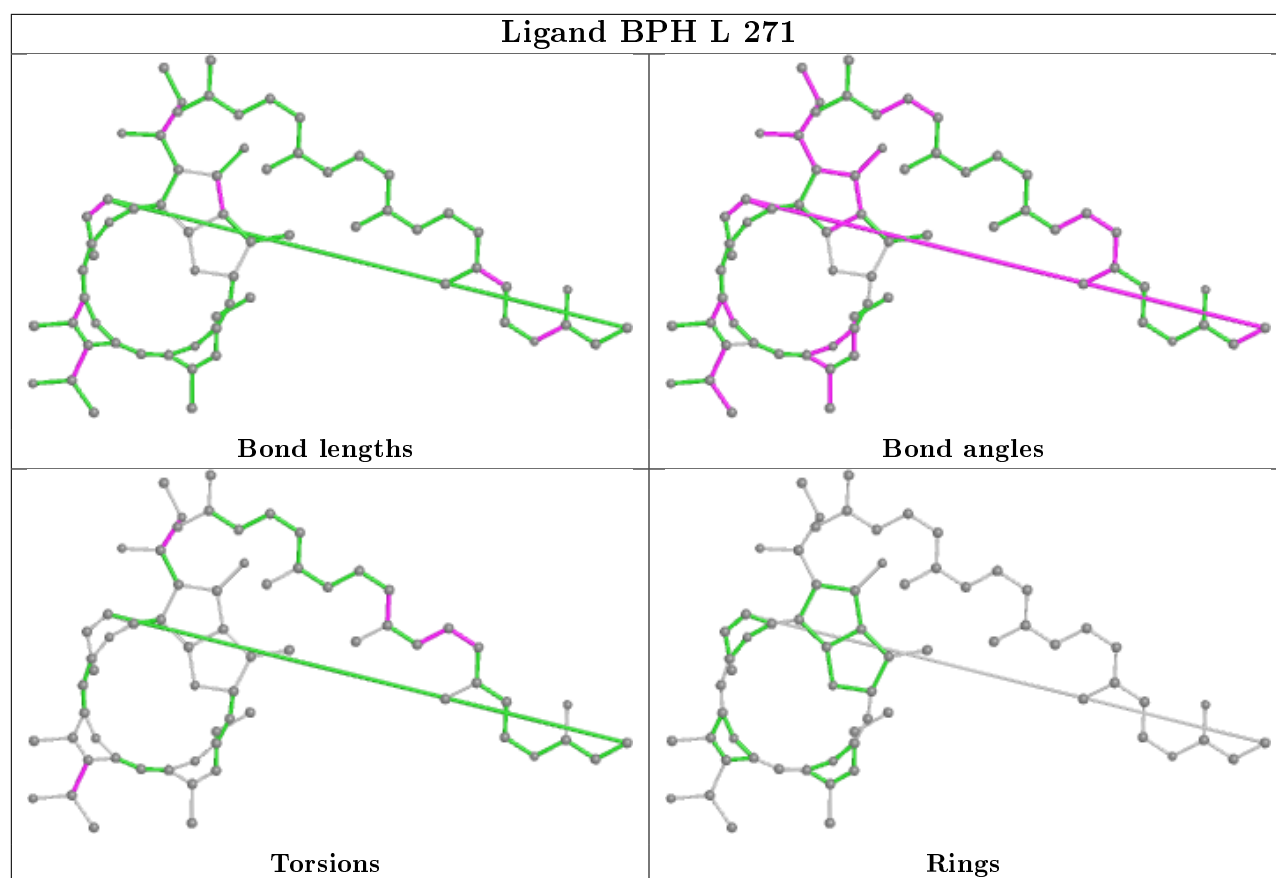


Ligand BCL M 1



Ligand BPH M 5





5.7 Other polymers [i](#)

There are no such residues in this entry.

5.8 Polymer linkage issues [i](#)

There are no chain breaks in this entry.

6 Fit of model and data ⓘ

6.1 Protein, DNA and RNA chains ⓘ

EDS was not executed - this section is therefore empty.

6.2 Non-standard residues in protein, DNA, RNA chains ⓘ

EDS was not executed - this section is therefore empty.

6.3 Carbohydrates ⓘ

EDS was not executed - this section is therefore empty.

6.4 Ligands ⓘ

EDS was not executed - this section is therefore empty.

6.5 Other polymers ⓘ

EDS was not executed - this section is therefore empty.