



Full wwPDB X-ray Structure Validation Report ⓘ

May 22, 2020 – 03:07 pm BST

PDB ID : 3PSX
Title : Crystal structure of the KT2 mutant of cytochrome P450 BM3
Authors : Yang, W.; Whitehouse, C.J.C.; Yorke, J.A.; Bell, S.G.; Zhou, W.; Bartlam, M.; Wong, L.L.; Rao, Z.
Deposited on : 2010-12-02
Resolution : 1.90 Å(reported)

This is a Full wwPDB X-ray Structure Validation Report for a publicly released PDB entry.

We welcome your comments at validation@mail.wwpdb.org

A user guide is available at

<https://www.wwpdb.org/validation/2017/XrayValidationReportHelp>

with specific help available everywhere you see the ⓘ symbol.

The following versions of software and data (see [references ⓘ](#)) were used in the production of this report:

MolProbity : 4.02b-467
Mogul : 1.8.5 (274361), CSD as541be (2020)
Xtriage (Phenix) : 1.13
EDS : 2.11
buster-report : 1.1.7 (2018)
Percentile statistics : 20191225.v01 (using entries in the PDB archive December 25th 2019)
Refmac : 5.8.0158
CCP4 : 7.0.044 (Gargrove)
Ideal geometry (proteins) : Engh & Huber (2001)
Ideal geometry (DNA, RNA) : Parkinson et al. (1996)
Validation Pipeline (wwPDB-VP) : 2.11

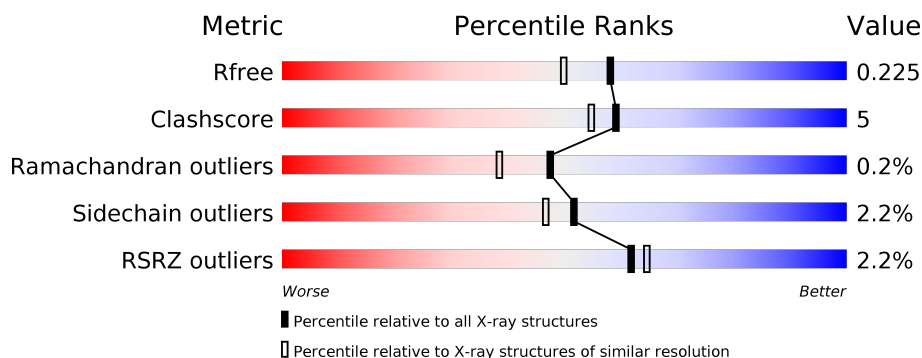
1 Overall quality at a glance

The following experimental techniques were used to determine the structure:

X-RAY DIFFRACTION

The reported resolution of this entry is 1.90 Å.

Percentile scores (ranging between 0-100) for global validation metrics of the entry are shown in the following graphic. The table shows the number of entries on which the scores are based.



Metric	Whole archive (#Entries)	Similar resolution (#Entries, resolution range(Å))
R_{free}	130704	6207 (1.90-1.90)
Clashscore	141614	6847 (1.90-1.90)
Ramachandran outliers	138981	6760 (1.90-1.90)
Sidechain outliers	138945	6760 (1.90-1.90)
RSRZ outliers	127900	6082 (1.90-1.90)

The table below summarises the geometric issues observed across the polymeric chains and their fit to the electron density. The red, orange, yellow and green segments on the lower bar indicate the fraction of residues that contain outliers for ≥ 3 , 2, 1 and 0 types of geometric quality criteria respectively. A grey segment represents the fraction of residues that are not modelled. The numeric value for each fraction is indicated below the corresponding segment, with a dot representing fractions $\leq 5\%$. The upper red bar (where present) indicates the fraction of residues that have poor fit to the electron density. The numeric value is given above the bar.

Mol	Chain	Length	Quality of chain
1	A	487	<div> <div>2%</div> <div> <div></div> <div>75%</div> <div>8%</div> <div>15%</div> </div> </div>
1	B	487	<div> <div>%</div> <div> <div></div> <div>73%</div> <div>10%</div> <div>15%</div> </div> </div>

2 Entry composition

There are 3 unique types of molecules in this entry. The entry contains 7602 atoms, of which 0 are hydrogens and 0 are deuteriums.

In the tables below, the ZeroOcc column contains the number of atoms modelled with zero occupancy, the AltConf column contains the number of residues with at least one atom in alternate conformation and the Trace column contains the number of residues modelled with at most 2 atoms.

- Molecule 1 is a protein called Bifunctional P-450/NADPH-P450 reductase.

Mol	Chain	Residues	Atoms					ZeroOcc	AltConf	Trace
1	A	412	Total	C	N	O	S	0	0	0
			3322	2131	562	614	15			
1	B	414	Total	C	N	O	S	0	0	0
			3332	2140	563	614	15			

There are 20 discrepancies between the modelled and reference sequences:

Chain	Residue	Modelled	Actual	Comment	Reference
A	-5	GLY	-	EXPRESSION TAG	UNP P14779
A	-4	PRO	-	EXPRESSION TAG	UNP P14779
A	-3	LEU	-	EXPRESSION TAG	UNP P14779
A	-2	GLY	-	EXPRESSION TAG	UNP P14779
A	-1	SER	-	EXPRESSION TAG	UNP P14779
A	191	THR	ALA	ENGINEERED MUTATION	UNP P14779
A	239	HIS	ASN	ENGINEERED MUTATION	UNP P14779
A	259	VAL	ILE	ENGINEERED MUTATION	UNP P14779
A	276	THR	ALA	ENGINEERED MUTATION	UNP P14779
A	353	ILE	LEU	ENGINEERED MUTATION	UNP P14779
B	-5	GLY	-	EXPRESSION TAG	UNP P14779
B	-4	PRO	-	EXPRESSION TAG	UNP P14779
B	-3	LEU	-	EXPRESSION TAG	UNP P14779
B	-2	GLY	-	EXPRESSION TAG	UNP P14779
B	-1	SER	-	EXPRESSION TAG	UNP P14779
B	191	THR	ALA	ENGINEERED MUTATION	UNP P14779
B	239	HIS	ASN	ENGINEERED MUTATION	UNP P14779
B	259	VAL	ILE	ENGINEERED MUTATION	UNP P14779
B	276	THR	ALA	ENGINEERED MUTATION	UNP P14779
B	353	ILE	LEU	ENGINEERED MUTATION	UNP P14779

- Molecule 2 is PROTOPORPHYRIN IX CONTAINING FE (three-letter code: HEM) (formula: $C_{34}H_{32}FeN_4O_4$).



Mol	Chain	Residues	Atoms					ZeroOcc	AltConf
2	A	1	Total 43	C 34	Fe 1	N 4	O 4	0	0
2	B	1	Total 43	C 34	Fe 1	N 4	O 4	0	0

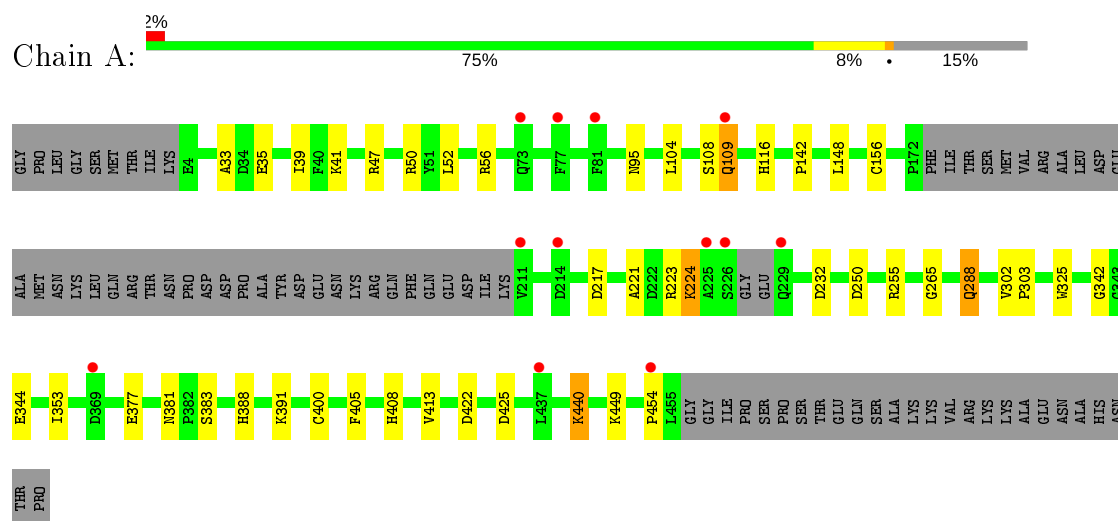
- Molecule 3 is water.

Mol	Chain	Residues	Atoms		ZeroOcc	AltConf
3	A	416	Total	O	0	0
			416	416		
3	B	446	Total	O	0	0
			446	446		

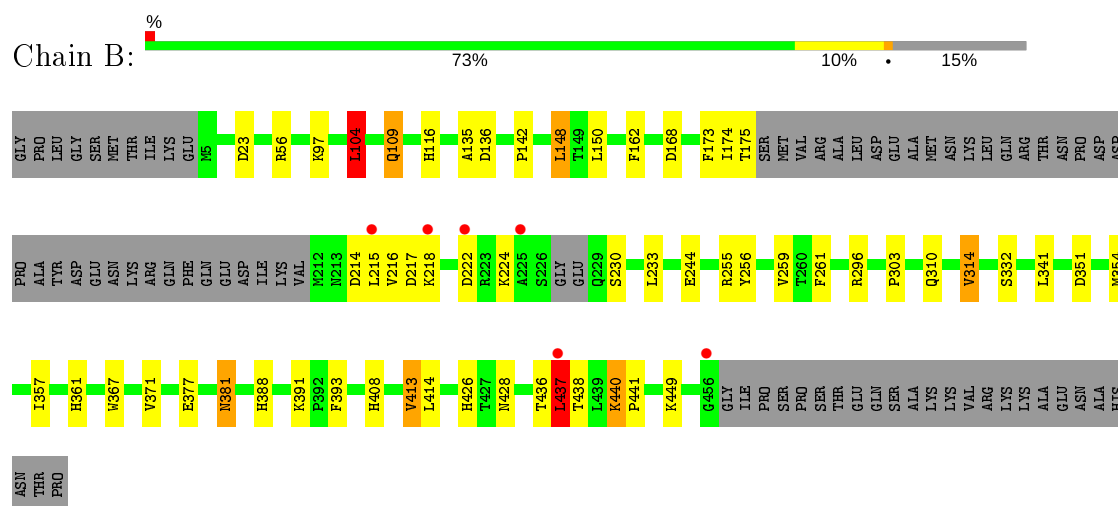
3 Residue-property plots [i](#)

These plots are drawn for all protein, RNA and DNA chains in the entry. The first graphic for a chain summarises the proportions of the various outlier classes displayed in the second graphic. The second graphic shows the sequence view annotated by issues in geometry and electron density. Residues are color-coded according to the number of geometric quality criteria for which they contain at least one outlier: green = 0, yellow = 1, orange = 2 and red = 3 or more. A red dot above a residue indicates a poor fit to the electron density ($RSRZ > 2$). Stretches of 2 or more consecutive residues without any outlier are shown as a green connector. Residues present in the sample, but not in the model, are shown in grey.

- Molecule 1: Bifunctional P-450/NADPH-P450 reductase



- Molecule 1: Bifunctional P-450/NADPH-P450 reductase



4 Data and refinement statistics

Property	Value	Source
Space group	P 1 21 1	Depositor
Cell constants a, b, c, α , β , γ	58.86 Å 146.10 Å 63.65 Å 90.00° 97.27° 90.00°	Depositor
Resolution (Å)	47.77 – 1.90 47.77 – 1.90	Depositor EDS
% Data completeness (in resolution range)	99.8 (47.77-1.90) 99.8 (47.77-1.90)	Depositor EDS
R_{merge}	0.04	Depositor
R_{sym}	(Not available)	Depositor
$\langle I/\sigma(I) \rangle$ ¹	3.95 (at 1.90 Å)	Xtriage
Refinement program	REFMAC 5.5.0109	Depositor
R, R_{free}	0.175 , 0.224 0.175 , 0.225	Depositor DCC
R_{free} test set	4165 reflections (4.99%)	wwPDB-VP
Wilson B-factor (Å ²)	22.4	Xtriage
Anisotropy	0.379	Xtriage
Bulk solvent k_{sol} (e/Å ³), B_{sol} (Å ²)	0.34 , 45.5	EDS
L-test for twinning ²	$\langle L \rangle = 0.50$, $\langle L^2 \rangle = 0.33$	Xtriage
Estimated twinning fraction	No twinning to report.	Xtriage
F_o, F_c correlation	0.96	EDS
Total number of atoms	7602	wwPDB-VP
Average B, all atoms (Å ²)	26.0	wwPDB-VP

Xtriage's analysis on translational NCS is as follows: *The largest off-origin peak in the Patterson function is 5.07% of the height of the origin peak. No significant pseudotranslation is detected.*

¹Intensities estimated from amplitudes.

²Theoretical values of $\langle |L| \rangle$, $\langle L^2 \rangle$ for acentric reflections are 0.5, 0.333 respectively for untwinned datasets, and 0.375, 0.2 for perfectly twinned datasets.

5 Model quality

5.1 Standard geometry

Bond lengths and bond angles in the following residue types are not validated in this section: HEM

The Z score for a bond length (or angle) is the number of standard deviations the observed value is removed from the expected value. A bond length (or angle) with $|Z| > 5$ is considered an outlier worth inspection. RMSZ is the root-mean-square of all Z scores of the bond lengths (or angles).

Mol	Chain	Bond lengths		Bond angles	
		RMSZ	$\# Z > 5$	RMSZ	$\# Z > 5$
1	A	1.15	7/3401 (0.2%)	0.96	4/4599 (0.1%)
1	B	1.14	9/3412 (0.3%)	0.97	7/4614 (0.2%)
All	All	1.15	16/6813 (0.2%)	0.96	11/9213 (0.1%)

Chiral center outliers are detected by calculating the chiral volume of a chiral center and verifying if the center is modelled as a planar moiety or with the opposite hand. A planarity outlier is detected by checking planarity of atoms in a peptide group, atoms in a mainchain group or atoms of a sidechain that are expected to be planar.

Mol	Chain	#Chirality outliers	#Planarity outliers
1	B	0	1

All (16) bond length outliers are listed below:

Mol	Chain	Res	Type	Atoms	Z	Observed(Å)	Ideal(Å)
1	A	377	GLU	CD-OE1	12.48	1.39	1.25
1	A	377	GLU	CD-OE2	10.09	1.36	1.25
1	A	377	GLU	CG-CD	9.19	1.65	1.51
1	B	244	GLU	CD-OE1	7.69	1.34	1.25
1	A	288	GLN	CG-CD	6.08	1.65	1.51
1	A	156	CYS	CB-SG	-6.00	1.72	1.82
1	B	377	GLU	CD-OE1	5.97	1.32	1.25
1	B	256	TYR	CD1-CE1	5.95	1.48	1.39
1	B	393	PHE	CE2-CZ	5.75	1.48	1.37
1	B	377	GLU	CG-CD	5.56	1.60	1.51
1	A	325	TRP	CE3-CZ3	5.49	1.47	1.38
1	B	314	VAL	CB-CG1	5.41	1.64	1.52
1	B	377	GLU	CD-OE2	5.38	1.31	1.25
1	B	56	ARG	CG-CD	5.24	1.65	1.51
1	A	33	ALA	CA-CB	5.24	1.63	1.52
1	B	97	LYS	CB-CG	5.00	1.66	1.52

All (11) bond angle outliers are listed below:

Mol	Chain	Res	Type	Atoms	Z	Observed(°)	Ideal(°)
1	B	296	ARG	NE-CZ-NH2	-8.10	116.25	120.30
1	B	56	ARG	NE-CZ-NH1	7.49	124.04	120.30
1	A	47	ARG	NE-CZ-NH1	7.03	123.81	120.30
1	B	437	LEU	CA-CB-CG	6.36	129.92	115.30
1	A	425	ASP	CB-CG-OD1	6.11	123.80	118.30
1	A	104	LEU	CB-CG-CD2	-5.98	100.83	111.00
1	A	250	ASP	CB-CG-OD1	5.65	123.39	118.30
1	B	351	ASP	CB-CG-OD1	-5.31	113.52	118.30
1	B	104	LEU	CB-CG-CD1	5.25	119.92	111.00
1	B	341	LEU	CB-CG-CD2	-5.14	102.26	111.00
1	B	413	VAL	CG1-CB-CG2	-5.07	102.78	110.90

There are no chirality outliers.

All (1) planarity outliers are listed below:

Mol	Chain	Res	Type	Group
1	B	437	LEU	Peptide

5.2 Too-close contacts ⓘ

In the following table, the Non-H and H(model) columns list the number of non-hydrogen atoms and hydrogen atoms in the chain respectively. The H(added) column lists the number of hydrogen atoms added and optimized by MolProbity. The Clashes column lists the number of clashes within the asymmetric unit, whereas Symm-Clashes lists symmetry related clashes.

Mol	Chain	Non-H	H(model)	H(added)	Clashes	Symm-Clashes
1	A	3322	0	3299	31	0
1	B	3332	0	3308	31	0
2	A	43	0	30	7	0
2	B	43	0	30	0	0
3	A	416	0	0	8	0
3	B	446	0	0	7	0
All	All	7602	0	6667	63	0

The all-atom clashscore is defined as the number of clashes found per 1000 atoms (including hydrogen atoms). The all-atom clashscore for this structure is 5.

All (63) close contacts within the same asymmetric unit are listed below, sorted by their clash magnitude.

Atom-1	Atom-2	Interatomic distance (Å)	Clash overlap (Å)
1:A:221:ALA:HA	1:A:224:LYS:HD2	1.30	1.13
1:B:109:GLN:HB2	3:B:515:HOH:O	1.73	0.88
1:B:23:ASP:HB3	3:B:851:HOH:O	1.75	0.86
1:A:255:ARG:NH1	3:A:762:HOH:O	2.12	0.83
1:B:214:ASP:HA	1:B:217:ASP:OD2	1.84	0.78
1:B:428:ASN:HB2	3:B:703:HOH:O	1.84	0.78
1:A:405:PHE:CD1	2:A:482:HEM:HBB1	2.23	0.74
1:A:388:HIS:HD2	1:A:391:LYS:NZ	1.87	0.72
1:A:35:GLU:HG3	3:A:727:HOH:O	1.93	0.69
1:B:388:HIS:HD2	1:B:391:LYS:NZ	1.92	0.67
1:A:388:HIS:HD2	1:A:391:LYS:HZ2	1.43	0.67
1:B:116:HIS:HD2	1:B:408:HIS:NE2	1.93	0.66
1:A:116:HIS:HD2	1:A:408:HIS:NE2	1.93	0.66
1:A:405:PHE:HD1	2:A:482:HEM:HBB1	1.60	0.66
1:A:454:PRO:HG3	3:A:542:HOH:O	1.97	0.64
1:A:381:ASN:OD1	3:A:686:HOH:O	2.15	0.64
1:A:224:LYS:NZ	3:A:538:HOH:O	2.30	0.64
1:A:108:SER:OG	1:A:109:GLN:N	2.32	0.62
1:B:388:HIS:HD2	1:B:391:LYS:HZ2	1.49	0.61
1:A:383:SER:HB3	1:B:104:LEU:HD23	1.84	0.59
1:B:162:PHE:HE1	1:B:215:LEU:HD21	1.68	0.58
1:A:217:ASP:HA	3:A:762:HOH:O	2.04	0.57
1:B:214:ASP:O	1:B:218:LYS:HG3	2.05	0.56
1:B:116:HIS:HE1	1:B:303:PRO:O	1.90	0.54
2:A:482:HEM:HMC1	2:A:482:HEM:HBC2	1.89	0.54
1:B:148:LEU:HD21	1:B:413:VAL:HG21	1.89	0.54
1:A:148:LEU:HD21	1:A:413:VAL:HG21	1.89	0.54
1:B:150:LEU:HD22	1:B:174:ILE:HD11	1.91	0.53
1:B:162:PHE:CE1	1:B:215:LEU:HD21	2.44	0.53
1:B:217:ASP:OD1	1:B:255:ARG:NH2	2.40	0.51
1:A:142:PRO:HB3	1:A:440:LYS:HD2	1.93	0.51
1:B:136:ASP:OD2	3:B:783:HOH:O	2.20	0.50
1:A:116:HIS:HE1	1:A:303:PRO:O	1.96	0.49
1:B:23:ASP:CB	3:B:851:HOH:O	2.49	0.48
1:B:314:VAL:HG13	1:B:414:LEU:HD23	1.95	0.48
1:A:342:GLY:O	1:A:344:GLU:HG3	2.14	0.47
1:B:173:PHE:CD1	1:B:215:LEU:HD22	2.50	0.47
1:B:332:SER:HB2	1:B:354:MET:SD	2.55	0.47
1:A:56:ARG:NH1	3:A:549:HOH:O	2.31	0.46
1:A:405:PHE:CD1	2:A:482:HEM:CBB	2.96	0.46
1:B:449:LYS:HG2	3:B:699:HOH:O	2.15	0.45
1:B:436:THR:C	1:B:438:THR:H	2.19	0.45

Continued on next page...

Continued from previous page...

Atom-1	Atom-2	Interatomic distance (Å)	Clash overlap (Å)
1:A:265:GLY:HA2	2:A:482:HEM:HMB1	1.99	0.44
1:A:223:ARG:NH2	1:A:232:ASP:OD2	2.44	0.44
1:B:224:LYS:HA	3:B:663:HOH:O	2.16	0.44
1:B:216:VAL:HG21	1:B:259:VAL:HG23	1.99	0.44
1:B:367:TRP:HB2	1:B:371:VAL:HG12	2.00	0.44
1:B:440:LYS:HG3	1:B:441:PRO:HD2	2.00	0.43
1:B:135:ALA:O	1:B:136:ASP:HB2	2.18	0.43
1:A:422:ASP:HB2	1:A:449:LYS:HG3	2.00	0.42
1:A:39:ILE:HD12	1:A:52:LEU:CD2	2.49	0.42
1:B:426:HIS:H	1:B:426:HIS:CD2	2.37	0.42
1:B:233:LEU:HD21	1:B:261:PHE:CD2	2.55	0.42
1:B:357:ILE:HG22	1:B:361:HIS:CE1	2.55	0.41
1:A:388:HIS:CD2	1:A:391:LYS:NZ	2.79	0.41
1:A:109:GLN:HB3	3:A:501:HOH:O	2.21	0.41
1:A:353:ILE:HG21	1:A:353:ILE:HD13	1.81	0.41
2:A:482:HEM:HBC2	2:A:482:HEM:CMC	2.50	0.41
1:B:381:ASN:C	1:B:381:ASN:HD22	2.23	0.41
1:A:400:CYS:HA	2:A:482:HEM:CHA	2.51	0.41
1:A:41:LYS:HB2	1:A:41:LYS:HE2	1.77	0.41
1:A:95:ASN:HD22	1:A:95:ASN:HA	1.70	0.40
1:A:302:VAL:HA	1:A:303:PRO:HD3	1.90	0.40

There are no symmetry-related clashes.

5.3 Torsion angles [i](#)

5.3.1 Protein backbone [i](#)

In the following table, the Percentiles column shows the percent Ramachandran outliers of the chain as a percentile score with respect to all X-ray entries followed by that with respect to entries of similar resolution.

The Analysed column shows the number of residues for which the backbone conformation was analysed, and the total number of residues.

Mol	Chain	Analysed	Favoured	Allowed	Outliers	Percentiles	
1	A	406/487 (83%)	392 (97%)	13 (3%)	1 (0%)	47	38
1	B	408/487 (84%)	392 (96%)	15 (4%)	1 (0%)	47	38
All	All	814/974 (84%)	784 (96%)	28 (3%)	2 (0%)	47	38

All (2) Ramachandran outliers are listed below:

Mol	Chain	Res	Type
1	A	109	GLN
1	B	437	LEU

5.3.2 Protein sidechains ⓘ

In the following table, the Percentiles column shows the percent sidechain outliers of the chain as a percentile score with respect to all X-ray entries followed by that with respect to entries of similar resolution.

The Analysed column shows the number of residues for which the sidechain conformation was analysed, and the total number of residues.

Mol	Chain	Analysed	Rotameric	Outliers	Percentiles	
1	A	362/426 (85%)	358 (99%)	4 (1%)	73	73
1	B	362/426 (85%)	350 (97%)	12 (3%)	38	29
All	All	724/852 (85%)	708 (98%)	16 (2%)	52	47

All (16) residues with a non-rotameric sidechain are listed below:

Mol	Chain	Res	Type
1	A	50	ARG
1	A	224	LYS
1	A	288	GLN
1	A	440	LYS
1	B	104	LEU
1	B	109	GLN
1	B	142	PRO
1	B	148	LEU
1	B	168	ASP
1	B	175	THR
1	B	222	ASP
1	B	230	SER
1	B	310	GLN
1	B	381	ASN
1	B	437	LEU
1	B	440	LYS

Some sidechains can be flipped to improve hydrogen bonding and reduce clashes. All (14) such sidechains are listed below:

Mol	Chain	Res	Type
1	A	92	HIS
1	A	95	ASN
1	A	116	HIS
1	A	381	ASN
1	A	388	HIS
1	A	403	GLN
1	B	92	HIS
1	B	95	ASN
1	B	109	GLN
1	B	116	HIS
1	B	310	GLN
1	B	381	ASN
1	B	388	HIS
1	B	426	HIS

5.3.3 RNA [i](#)

There are no RNA molecules in this entry.

5.4 Non-standard residues in protein, DNA, RNA chains [i](#)

There are no non-standard protein/DNA/RNA residues in this entry.

5.5 Carbohydrates [i](#)

There are no carbohydrates in this entry.

5.6 Ligand geometry [i](#)

2 ligands are modelled in this entry.

In the following table, the Counts columns list the number of bonds (or angles) for which Mogul statistics could be retrieved, the number of bonds (or angles) that are observed in the model and the number of bonds (or angles) that are defined in the Chemical Component Dictionary. The Link column lists molecule types, if any, to which the group is linked. The Z score for a bond length (or angle) is the number of standard deviations the observed value is removed from the expected value. A bond length (or angle) with $|Z| > 2$ is considered an outlier worth inspection. RMSZ is the root-mean-square of all Z scores of the bond lengths (or angles).

Mol	Type	Chain	Res	Link	Bond lengths			Bond angles		
					Counts	RMSZ	$\# Z > 2$	Counts	RMSZ	$\# Z > 2$
2	HEM	B	482	1,3	27,50,50	2.21	6 (22%)	17,82,82	2.17	5 (29%)

Mol	Type	Chain	Res	Link	Bond lengths			Bond angles		
					Counts	RMSZ	# Z > 2	Counts	RMSZ	# Z > 2
2	HEM	A	482	1,3	27,50,50	2.05	10 (37%)	17,82,82	2.31	6 (35%)

In the following table, the Chirals column lists the number of chiral outliers, the number of chiral centers analysed, the number of these observed in the model and the number defined in the Chemical Component Dictionary. Similar counts are reported in the Torsion and Rings columns. '-' means no outliers of that kind were identified.

Mol	Type	Chain	Res	Link	Chirals	Torsions	Rings
2	HEM	B	482	1,3	-	0/6/54/54	-
2	HEM	A	482	1,3	-	0/6/54/54	-

All (16) bond length outliers are listed below:

Mol	Chain	Res	Type	Atoms	Z	Observed(Å)	Ideal(Å)
2	B	482	HEM	C3B-C2B	-5.88	1.32	1.40
2	B	482	HEM	C3D-C2D	4.94	1.52	1.37
2	A	482	HEM	C3D-C2D	4.57	1.51	1.37
2	A	482	HEM	C3C-C2C	-4.51	1.34	1.40
2	B	482	HEM	C3C-CAC	3.62	1.55	1.47
2	B	482	HEM	CAA-C2A	3.46	1.57	1.52
2	A	482	HEM	CMA-C3A	3.31	1.58	1.51
2	A	482	HEM	C3B-C2B	-3.26	1.35	1.40
2	B	482	HEM	C3B-CAB	3.13	1.54	1.47
2	A	482	HEM	C3B-CAB	2.80	1.53	1.47
2	B	482	HEM	C3C-C2C	-2.65	1.36	1.40
2	A	482	HEM	CMC-C2C	2.32	1.57	1.51
2	A	482	HEM	C1C-C2C	2.32	1.47	1.42
2	A	482	HEM	CAD-C3D	2.29	1.56	1.52
2	A	482	HEM	CMB-C2B	2.26	1.56	1.51
2	A	482	HEM	C3C-CAC	2.06	1.52	1.47

All (11) bond angle outliers are listed below:

Mol	Chain	Res	Type	Atoms	Z	Observed(°)	Ideal(°)
2	A	482	HEM	CBA-CAA-C2A	-5.73	101.92	112.49
2	B	482	HEM	CBD-CAD-C3D	-5.26	102.79	112.48
2	A	482	HEM	C4C-C3C-C2C	4.34	109.93	106.90
2	B	482	HEM	CMA-C3A-C4A	-4.05	122.24	128.46
2	A	482	HEM	CBD-CAD-C3D	-4.01	105.09	112.48
2	B	482	HEM	C4A-C3A-C2A	3.27	109.27	107.00
2	B	482	HEM	CBA-CAA-C2A	-2.65	107.60	112.49
2	A	482	HEM	CMD-C2D-C1D	-2.30	124.92	128.46

Continued on next page...

Continued from previous page...

Mol	Chain	Res	Type	Atoms	Z	Observed(°)	Ideal(°)
2	A	482	HEM	CMD-C2D-C3D	2.16	129.00	124.94
2	A	482	HEM	CMC-C2C-C3C	2.07	128.55	124.68
2	B	482	HEM	C3C-C4C-NC	-2.02	107.13	110.94

There are no chirality outliers.

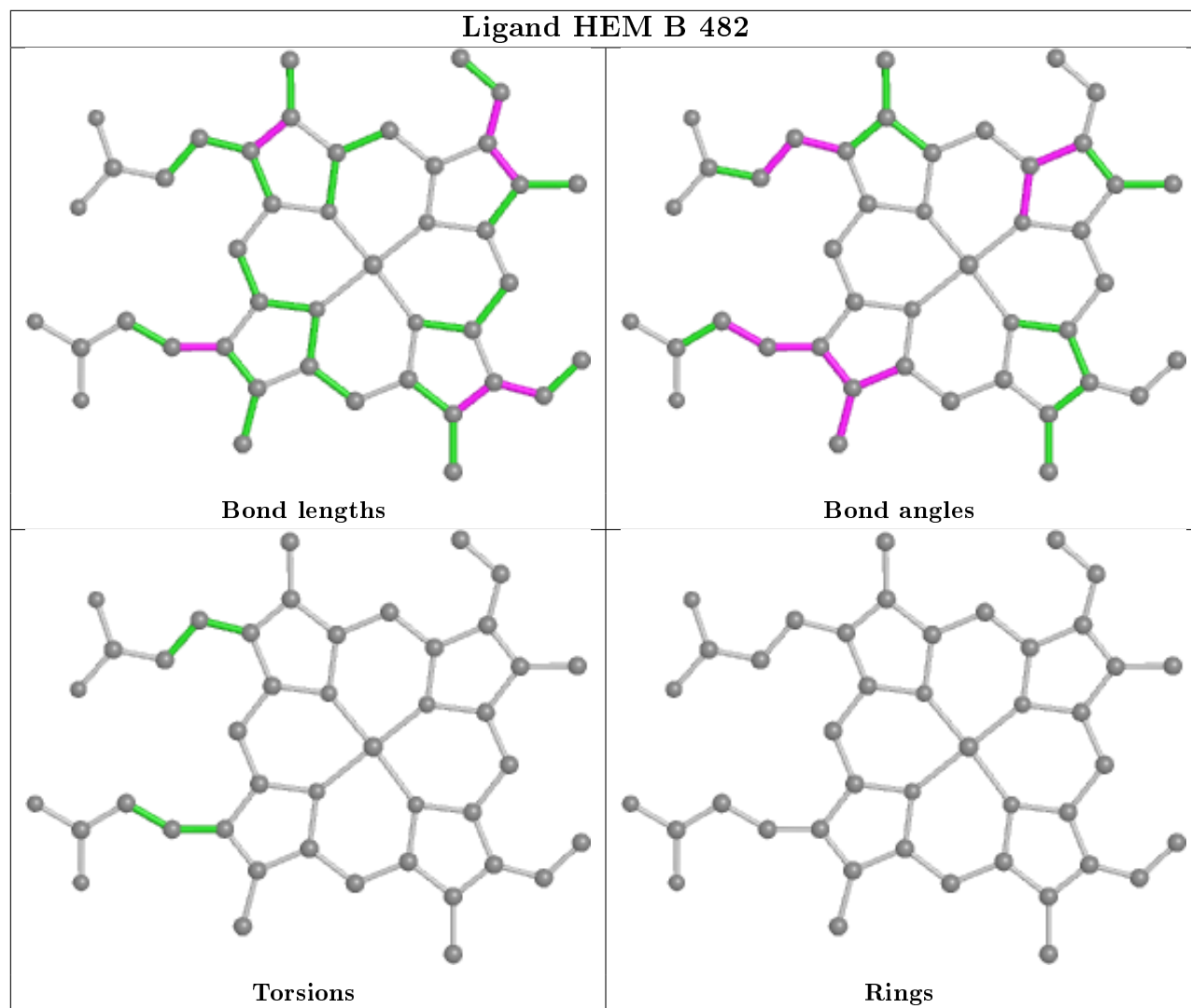
There are no torsion outliers.

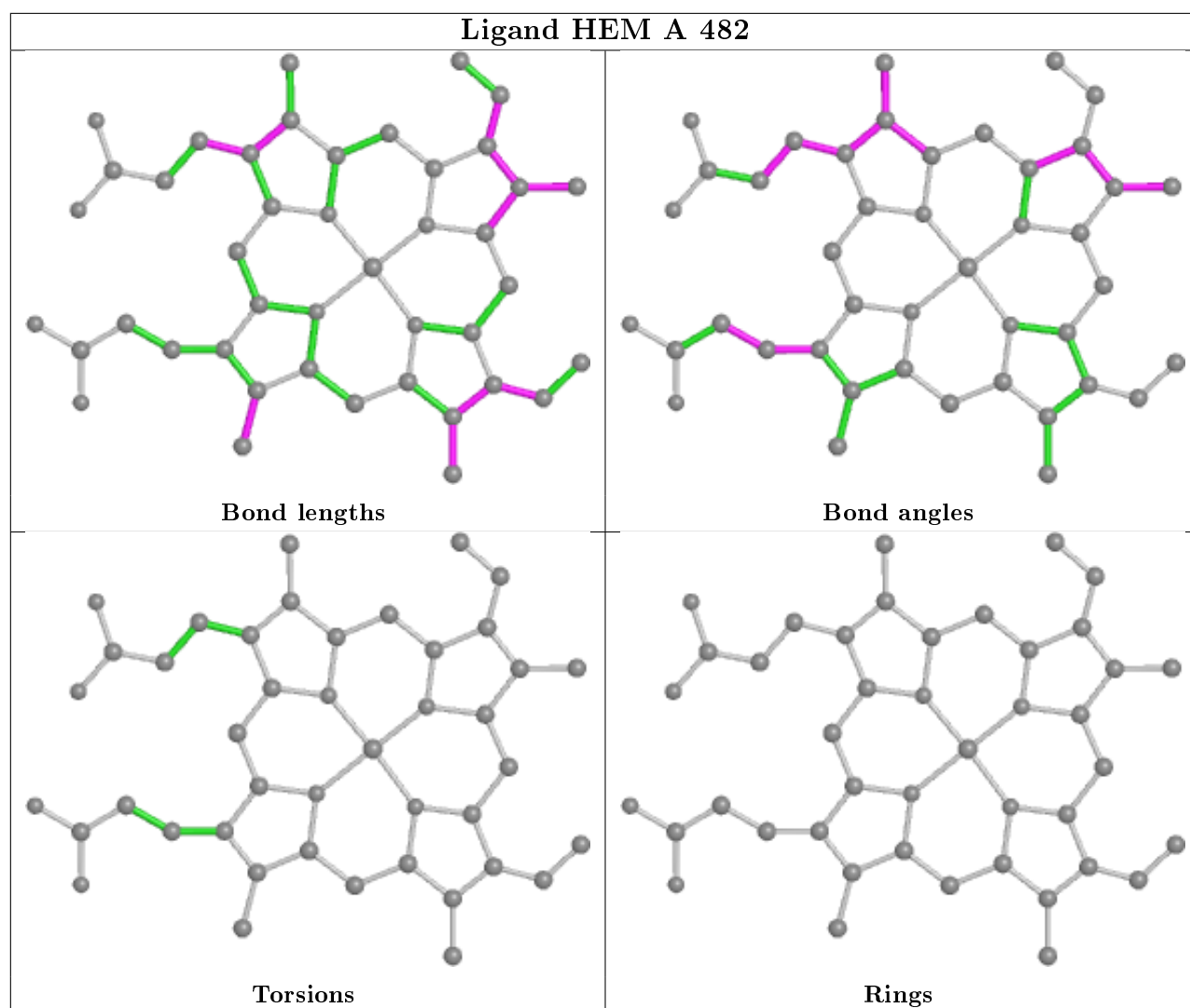
There are no ring outliers.

1 monomer is involved in 7 short contacts:

Mol	Chain	Res	Type	Clashes	Symm-Clashes
2	A	482	HEM	7	0

The following is a two-dimensional graphical depiction of Mogul quality analysis of bond lengths, bond angles, torsion angles, and ring geometry for all instances of the Ligand of Interest. In addition, ligands with molecular weight > 250 and outliers as shown on the validation Tables will also be included. For torsion angles, if less than 5% of the Mogul distribution of torsion angles is within 10 degrees of the torsion angle in question, then that torsion angle is considered an outlier. Any bond that is central to one or more torsion angles identified as an outlier by Mogul will be highlighted in the graph. For rings, the root-mean-square deviation (RMSD) between the ring in question and similar rings identified by Mogul is calculated over all ring torsion angles. If the average RMSD is greater than 60 degrees and the minimal RMSD between the ring in question and any Mogul-identified rings is also greater than 60 degrees, then that ring is considered an outlier. The outliers are highlighted in purple. The color gray indicates Mogul did not find sufficient equivalents in the CSD to analyse the geometry.





5.7 Other polymers [i](#)

There are no such residues in this entry.

5.8 Polymer linkage issues [i](#)

There are no chain breaks in this entry.

6 Fit of model and data [i](#)

6.1 Protein, DNA and RNA chains [i](#)

In the following table, the column labelled ‘#RSRZ> 2’ contains the number (and percentage) of RSRZ outliers, followed by percent RSRZ outliers for the chain as percentile scores relative to all X-ray entries and entries of similar resolution. The OWAB column contains the minimum, median, 95th percentile and maximum values of the occupancy-weighted average B-factor per residue. The column labelled ‘Q< 0.9’ lists the number of (and percentage) of residues with an average occupancy less than 0.9.

Mol	Chain	Analysed	<RSRZ>	#RSRZ>2	OWAB(Å ²)	Q<0.9
1	A	412/487 (84%)	-0.23	12 (2%) 51 54	15, 23, 43, 61	0
1	B	414/487 (85%)	-0.29	6 (1%) 75 77	14, 22, 46, 57	0
All	All	826/974 (84%)	-0.26	18 (2%) 62 64	14, 23, 45, 61	0

All (18) RSRZ outliers are listed below:

Mol	Chain	Res	Type	RSRZ
1	A	229	GLN	4.9
1	A	437	LEU	3.6
1	A	211	VAL	3.6
1	B	218	LYS	3.3
1	A	225	ALA	3.2
1	A	214	ASP	3.0
1	A	226	SER	2.8
1	B	215	LEU	2.8
1	B	456	GLY	2.8
1	A	73	GLN	2.7
1	B	225	ALA	2.5
1	A	454	PRO	2.5
1	A	77	PHE	2.3
1	A	81	PHE	2.3
1	A	109	GLN	2.2
1	A	369	ASP	2.2
1	B	222	ASP	2.1
1	B	437	LEU	2.1

6.2 Non-standard residues in protein, DNA, RNA chains [i](#)

There are no non-standard protein/DNA/RNA residues in this entry.

6.3 Carbohydrates

There are no carbohydrates in this entry.

6.4 Ligands

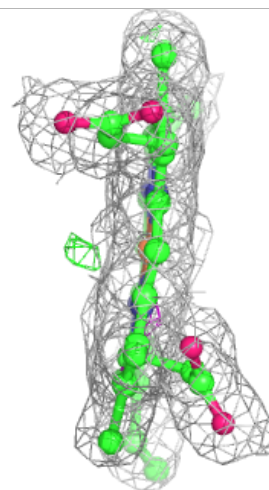
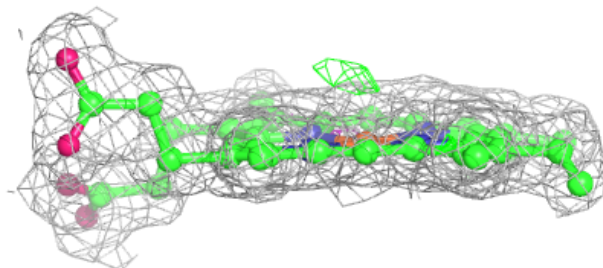
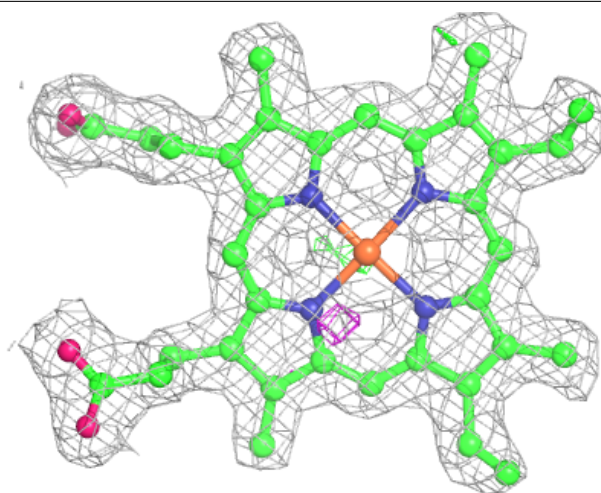
In the following table, the Atoms column lists the number of modelled atoms in the group and the number defined in the chemical component dictionary. The B-factors column lists the minimum, median, 95th percentile and maximum values of B factors of atoms in the group. The column labelled 'Q< 0.9' lists the number of atoms with occupancy less than 0.9.

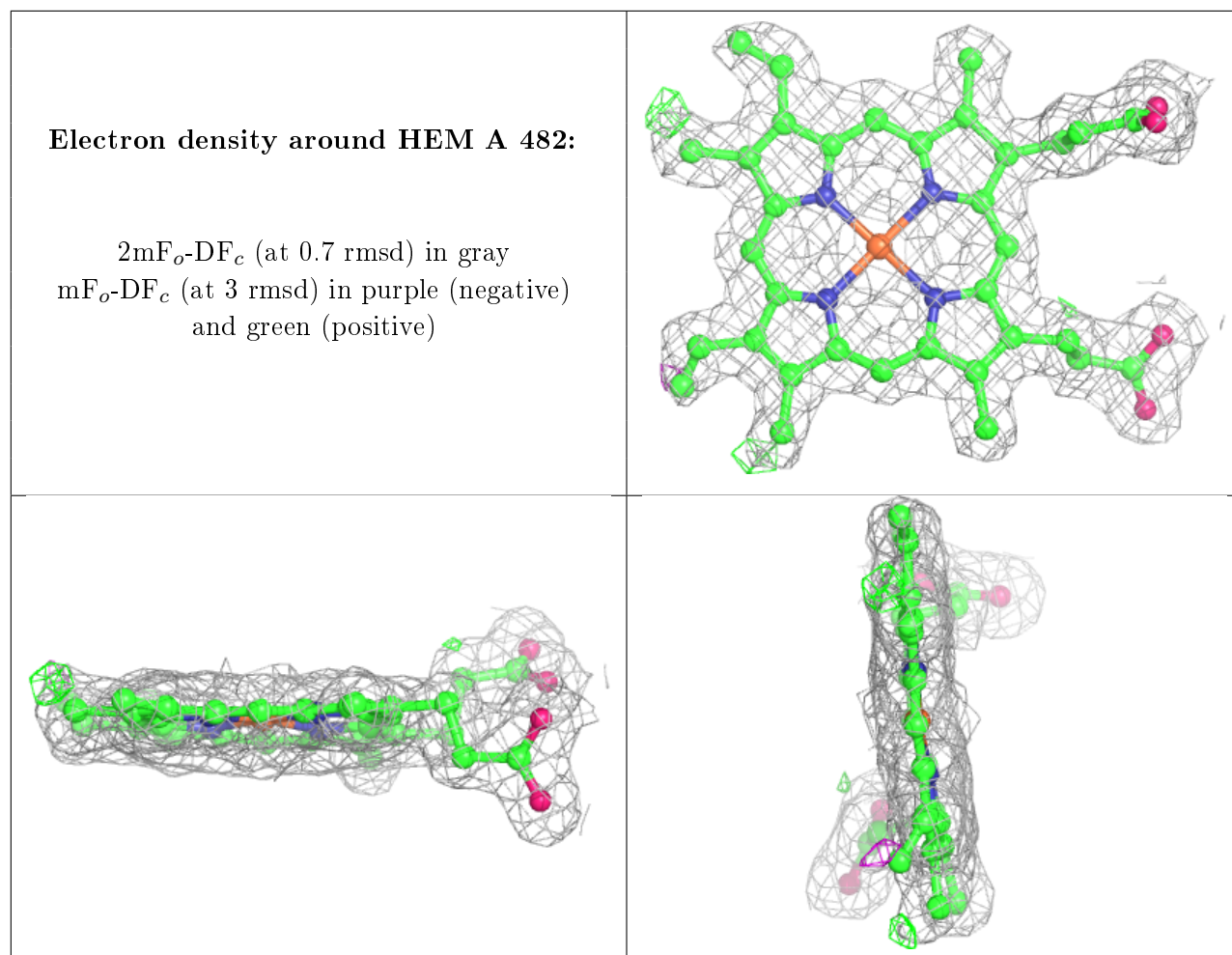
Mol	Type	Chain	Res	Atoms	RSCC	RSR	B-factors(\AA^2)	Q<0.9
2	HEM	B	482	43/43	0.98	0.10	14,19,22,29	0
2	HEM	A	482	43/43	0.98	0.08	12,16,21,31	0

The following is a graphical depiction of the model fit to experimental electron density of all instances of the Ligand of Interest. In addition, ligands with molecular weight > 250 and outliers as shown on the geometry validation Tables will also be included. Each fit is shown from different orientation to approximate a three-dimensional view.

Electron density around HEM B 482:

$2mF_o-DF_c$ (at 0.7 rmsd) in gray
 mF_o-DF_c (at 3 rmsd) in purple (negative)
and green (positive)





6.5 Other polymers [i](#)

There are no such residues in this entry.