



## wwPDB EM Validation Summary Report ⓘ

Nov 12, 2022 – 02:39 PM EST

PDB ID : 6PSQ  
EMDB ID : EMD-20460  
Title : Escherichia coli RNA polymerase closed complex (TRPc) with TraR and rpsT  
P2 promoter  
Authors : Chen, J.; Chiu, C.E.; Campbell, E.A.; Darst, S.A.  
Deposited on : 2019-07-13  
Resolution : 3.40 Å(reported)

This is a wwPDB EM Validation Summary Report for a publicly released PDB entry.

We welcome your comments at [validation@mail.wwpdb.org](mailto:validation@mail.wwpdb.org)

A user guide is available at

<https://www.wwpdb.org/validation/2017/EMValidationReportHelp>  
with specific help available everywhere you see the ⓘ symbol.

The types of validation reports are described at

<http://www.wwpdb.org/validation/2017/FAQs#types>.

---

The following versions of software and data (see [references ⓘ](#)) were used in the production of this report:

EMDB validation analysis	:	0.0.1.dev43
Mogul	:	1.8.5 (274361), CSD as541be (2020)
MolProbity	:	4.02b-467
buster-report	:	1.1.7 (2018)
Percentile statistics	:	20191225.v01 (using entries in the PDB archive December 25th 2019)
MapQ	:	1.9.9
Ideal geometry (proteins)	:	Engh & Huber (2001)
Ideal geometry (DNA, RNA)	:	Parkinson et al. (1996)
Validation Pipeline (wwPDB-VP)	:	2.31.2

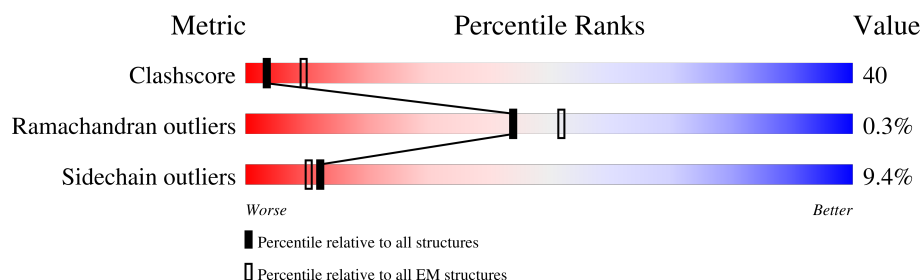
# 1 Overall quality at a glance

The following experimental techniques were used to determine the structure:

*ELECTRON MICROSCOPY*

The reported resolution of this entry is 3.40 Å.

Percentile scores (ranging between 0-100) for global validation metrics of the entry are shown in the following graphic. The table shows the number of entries on which the scores are based.





Metric	Whole archive (#Entries)	EM structures (#Entries)
Clashscore	158937	4297
Ramachandran outliers	154571	4023
Sidechain outliers	154315	3826

The table below summarises the geometric issues observed across the polymeric chains and their fit to the map. The red, orange, yellow and green segments of the bar indicate the fraction of residues that contain outliers for  $\geq 3$ , 2, 1 and 0 types of geometric quality criteria respectively. A grey segment represents the fraction of residues that are not modelled. The numeric value for each fraction is indicated below the corresponding segment, with a dot representing fractions  $\leq 5\%$ . The upper red bar (where present) indicates the fraction of residues that have poor fit to the EM map (all-atom inclusion  $< 40\%$ ). The numeric value is given above the bar.

Mol	Chain	Length	Quality of chain
1	J	1430	
2	N	72	
3	G	329	
3	H	329	
3	M	329	
4	I	1342	
5	K	91	
6	L	616	

Continued on next page...

*Continued from previous page...*

Mol	Chain	Length	Quality of chain
7	O	85	 12% 47% 41%
8	P	85	 7% 52% 41%

## 2 Entry composition

There are 11 unique types of molecules in this entry. The entry contains 32933 atoms, of which 156 are hydrogens and 0 are deuteriums.

In the tables below, the AltConf column contains the number of residues with at least one atom in alternate conformation and the Trace column contains the number of residues modelled with at most 2 atoms.

- Molecule 1 is a protein called DNA-directed RNA polymerase subunit beta'.

Mol	Chain	Residues	Atoms					AltConf	Trace
1	J	1345	Total	C	N	O	S	0	0
			10466	6577	1867	1972	50		

There are 24 discrepancies between the modelled and reference sequences:

Chain	Residue	Modelled	Actual	Comment	Reference
J	1	VAL	-	expression tag	UNP P0A8T7
J	1408	LEU	-	expression tag	UNP P0A8T7
J	1409	GLU	-	expression tag	UNP P0A8T7
J	1410	LEU	-	expression tag	UNP P0A8T7
J	1411	GLU	-	expression tag	UNP P0A8T7
J	1412	VAL	-	expression tag	UNP P0A8T7
J	1413	LEU	-	expression tag	UNP P0A8T7
J	1414	PHE	-	expression tag	UNP P0A8T7
J	1415	GLN	-	expression tag	UNP P0A8T7
J	1416	GLY	-	expression tag	UNP P0A8T7
J	1417	PRO	-	expression tag	UNP P0A8T7
J	1418	SER	-	expression tag	UNP P0A8T7
J	1419	SER	-	expression tag	UNP P0A8T7
J	1420	GLY	-	expression tag	UNP P0A8T7
J	1421	HIS	-	expression tag	UNP P0A8T7
J	1422	HIS	-	expression tag	UNP P0A8T7
J	1423	HIS	-	expression tag	UNP P0A8T7
J	1424	HIS	-	expression tag	UNP P0A8T7
J	1425	HIS	-	expression tag	UNP P0A8T7
J	1426	HIS	-	expression tag	UNP P0A8T7
J	1427	HIS	-	expression tag	UNP P0A8T7
J	1428	HIS	-	expression tag	UNP P0A8T7
J	1429	HIS	-	expression tag	UNP P0A8T7
J	1430	HIS	-	expression tag	UNP P0A8T7

- Molecule 2 is a protein called Protein TraR.

Mol	Chain	Residues	Atoms					AltConf	Trace
2	N	72	Total	C	N	O	S	0	0
			571	353	105	108	5		

- Molecule 3 is a protein called DNA-directed RNA polymerase subunit alpha.

Mol	Chain	Residues	Atoms					AltConf	Trace
3	G	230	Total	C	N	O	S	0	0
			1764	1103	314	341	6		
3	H	219	Total	C	N	O	S	0	0
			1682	1050	295	331	6		
3	M	73	Total	C	N	O	S	0	0
			572	362	100	108	2		

- Molecule 4 is a protein called DNA-directed RNA polymerase subunit beta.

Mol	Chain	Residues	Atoms					AltConf	Trace
4	I	1339	Total	C	N	O	S	0	0
			10549	6618	1840	2048	43		

- Molecule 5 is a protein called DNA-directed RNA polymerase subunit omega.

Mol	Chain	Residues	Atoms					AltConf	Trace
5	K	75	Total	C	N	O	S	0	0
			600	365	114	120	1		

- Molecule 6 is a protein called RNA polymerase sigma factor RpoD.

Mol	Chain	Residues	Atoms					AltConf	Trace
6	L	551	Total	C	N	O	S	0	0
			4411	2757	774	854	26		

There are 3 discrepancies between the modelled and reference sequences:

Chain	Residue	Modelled	Actual	Comment	Reference
L	-2	SER	-	expression tag	UNP Q0P6L9
L	-1	GLU	-	expression tag	UNP Q0P6L9
L	0	PHE	-	expression tag	UNP Q0P6L9

- Molecule 7 is a DNA chain called DNA (85-MER).

Mol	Chain	Residues	Atoms					AltConf	Trace
7	O	50	Total	C	N	O	P	0	0
			1024	488	193	293	50		

- Molecule 8 is a DNA chain called DNA (85-MER).

Mol	Chain	Residues	Atoms					AltConf	Trace
8	P	50	Total	C	N	O	P	0	0
			1026	491	178	307	50		

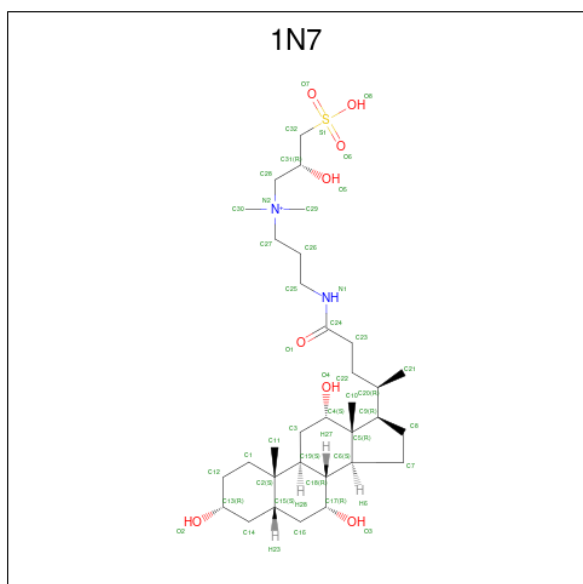
- Molecule 9 is MAGNESIUM ION (three-letter code: MG) (formula: Mg).

Mol	Chain	Residues	Atoms		AltConf
9	J	1	Total	Mg	0
			1	1	

- Molecule 10 is ZINC ION (three-letter code: ZN) (formula: Zn).

Mol	Chain	Residues	Atoms		AltConf
10	J	2	Total	Zn	0
			2	2	
10	N	1	Total	Zn	0
			1	1	

- Molecule 11 is CHAPSO (three-letter code: 1N7) (formula: C<sub>32</sub>H<sub>59</sub>N<sub>2</sub>O<sub>8</sub>S).

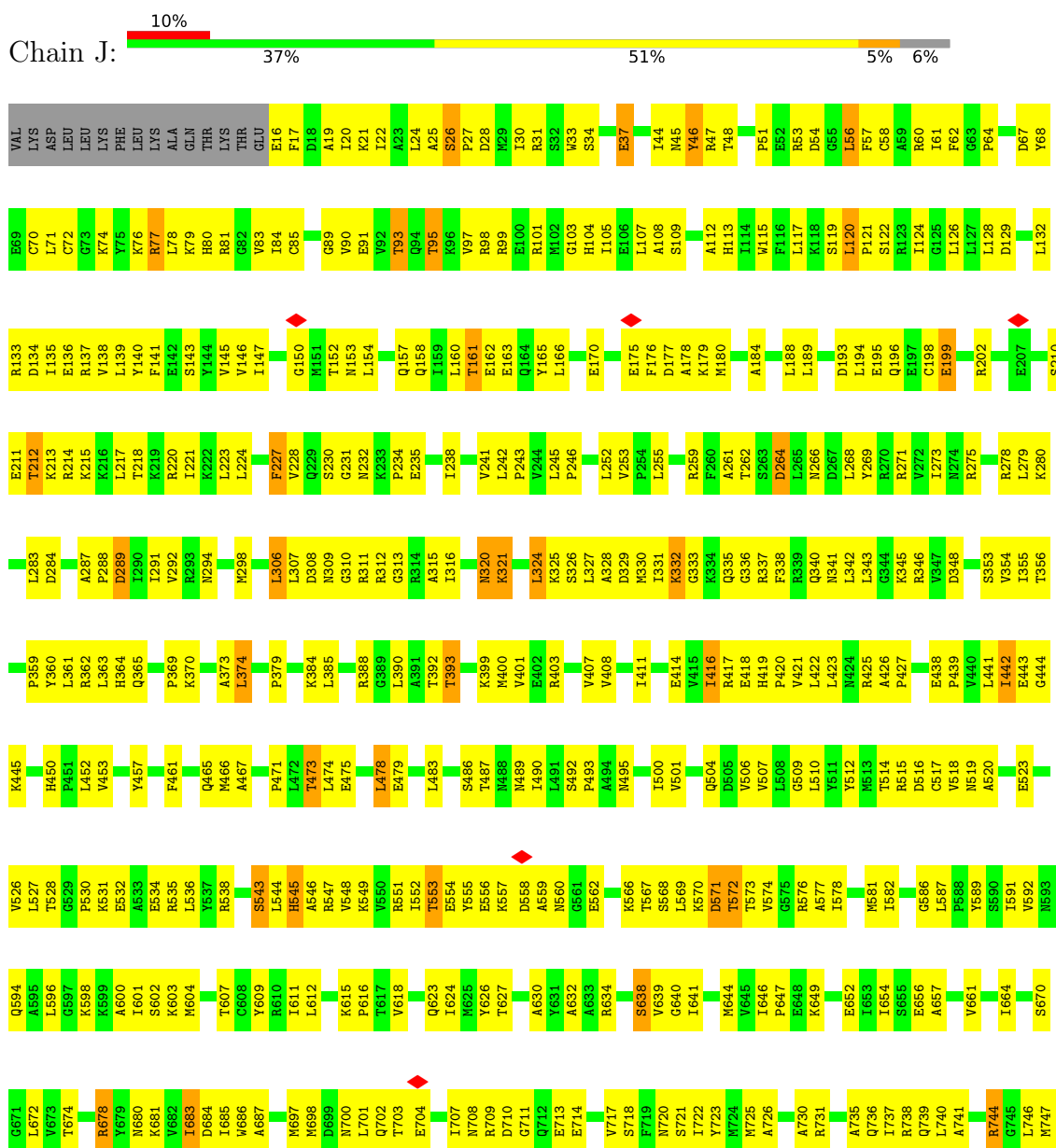


Mol	Chain	Residues	Atoms				AltConf
11	J	1	Total	C	H	O	0
			198	72	117	9	
11	J	1	Total	C	H	O	0
			198	72	117	9	
11	J	1	Total	C	H	O	0
			198	72	117	9	
11	I	1	Total	C	H	O	0
			66	24	39	3	

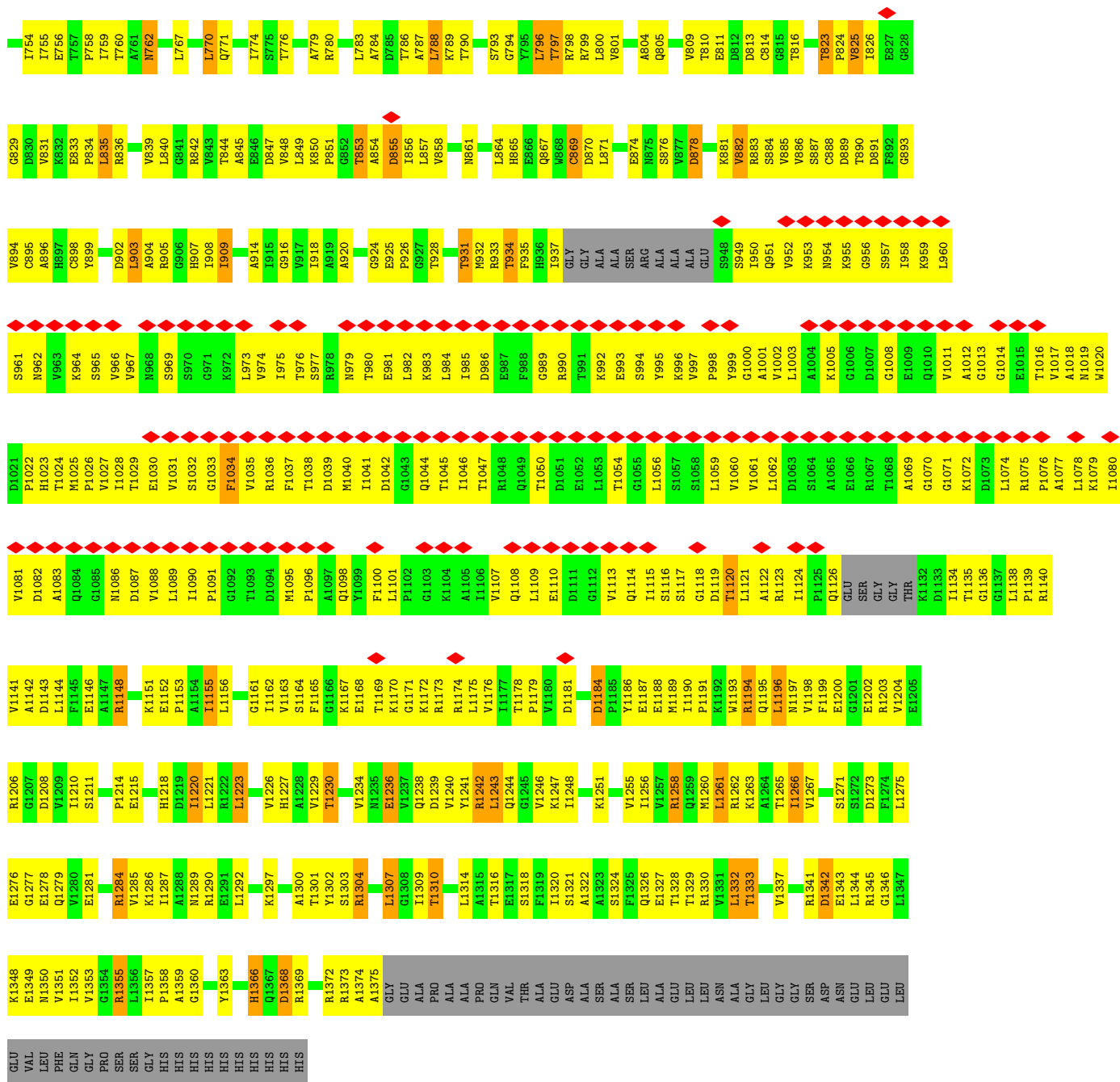
### 3 Residue-property plots

These plots are drawn for all protein, RNA, DNA and oligosaccharide chains in the entry. The first graphic for a chain summarises the proportions of the various outlier classes displayed in the second graphic. The second graphic shows the sequence view annotated by issues in geometry and atom inclusion in map density. Residues are color-coded according to the number of geometric quality criteria for which they contain at least one outlier: green = 0, yellow = 1, orange = 2 and red = 3 or more. A red diamond above a residue indicates a poor fit to the EM map for this residue (all-atom inclusion < 40%). Stretches of 2 or more consecutive residues without any outlier are shown as a green connector. Residues present in the sample, but not in the model, are shown in grey.

- Molecule 1: DNA-directed RNA polymerase subunit beta'







• Molecule 2: Protein TraR

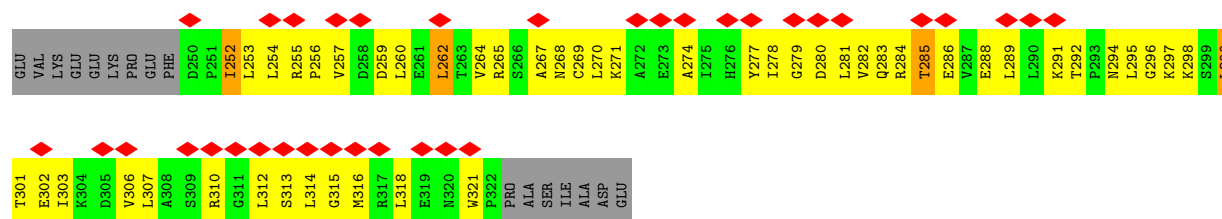
Chain N: 53% 44%



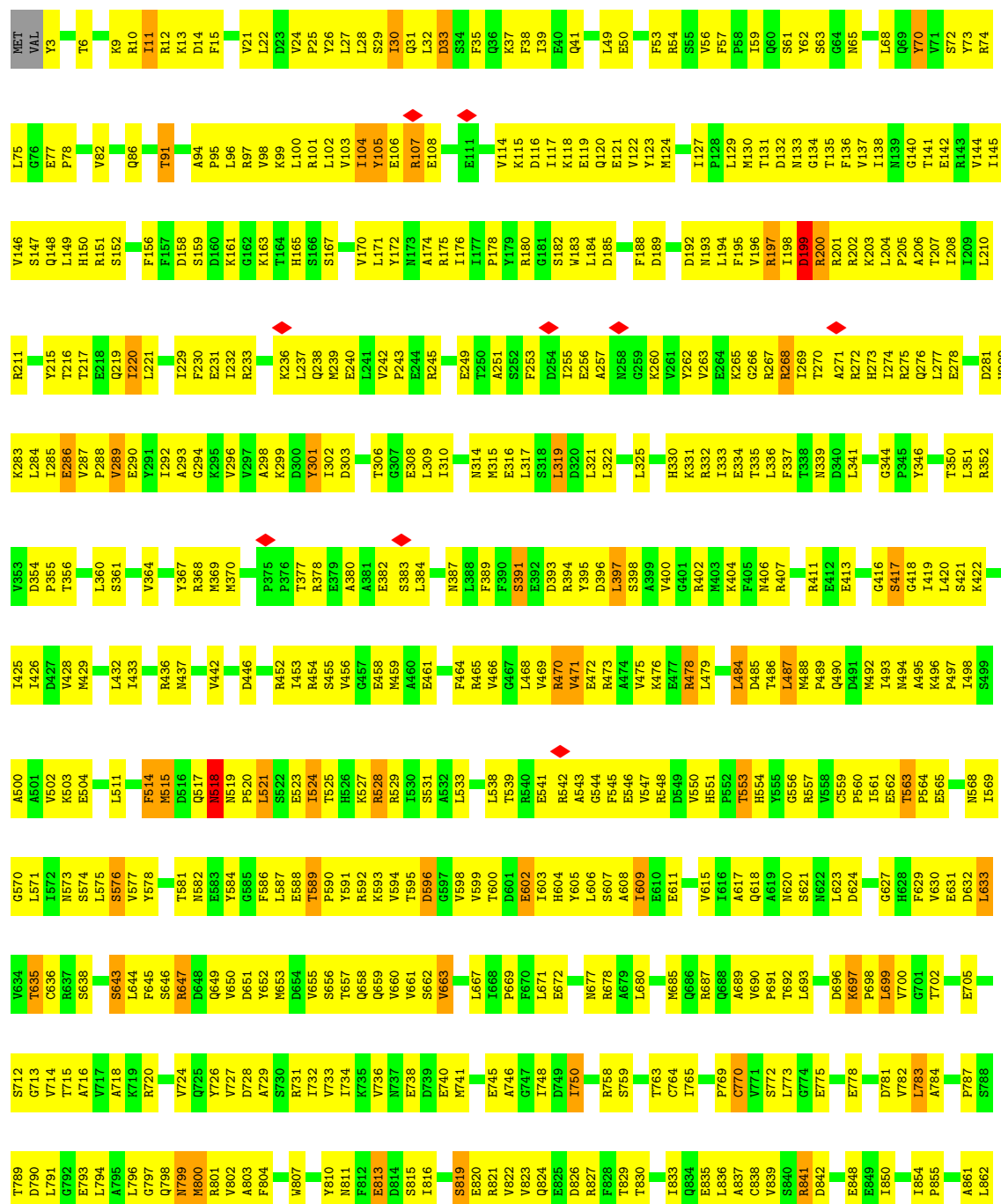
• Molecule 3: DNA-directed RNA polymerase subunit alpha

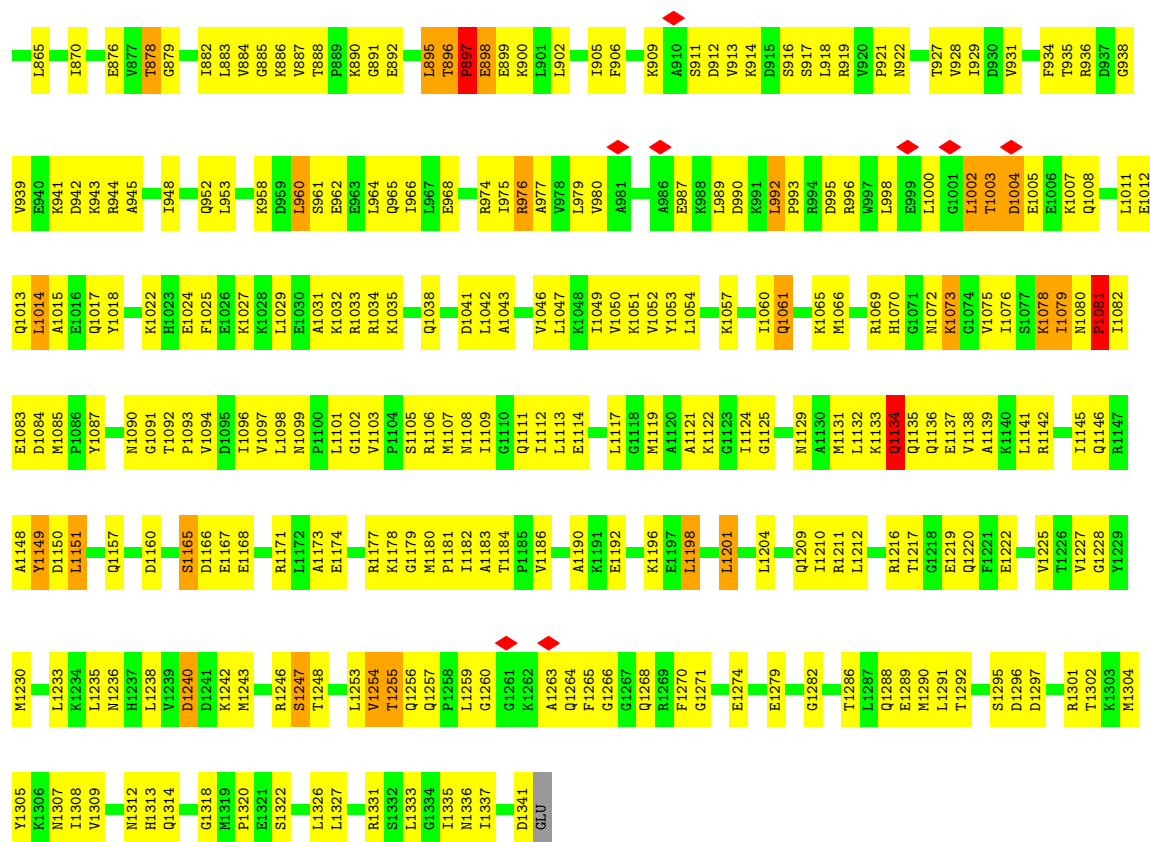
Chain G: 30% 34% 5% 30%



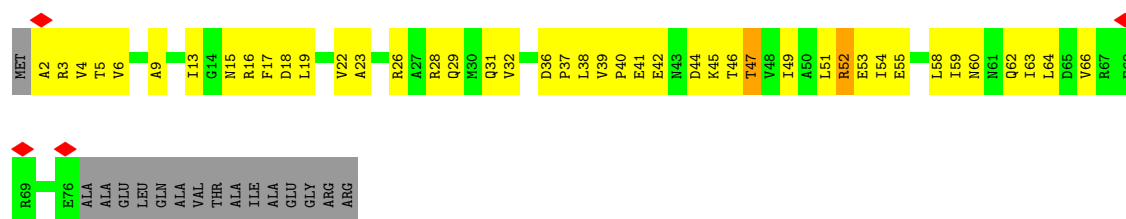


• Molecule 4: DNA-directed RNA polymerase subunit beta

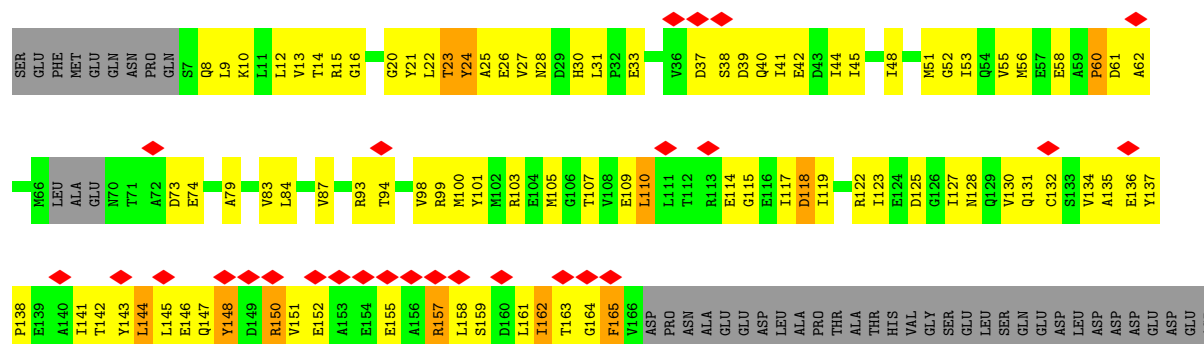


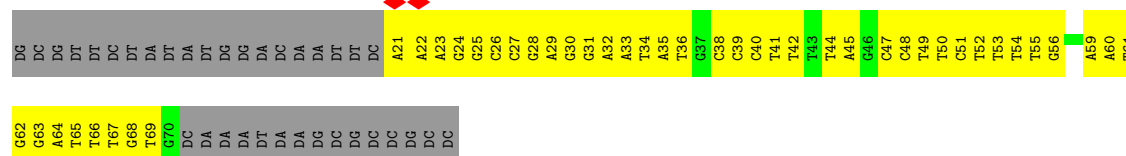


• Molecule 5: DNA-directed RNA polymerase subunit omega



• Molecule 6: RNA polymerase sigma factor RpoD





## 4 Experimental information

Property	Value	Source
EM reconstruction method	SINGLE PARTICLE	Depositor
Imposed symmetry	POINT, C1	Depositor
Number of particles used	97182	Depositor
Resolution determination method	FSC 0.143 CUT-OFF	Depositor
CTF correction method	PHASE FLIPPING AND AMPLITUDE CORRECTION	Depositor
Microscope	FEI TITAN KRIOS	Depositor
Voltage (kV)	300	Depositor
Electron dose ( $e^-/\text{\AA}^2$ )	80	Depositor
Minimum defocus (nm)	Not provided	
Maximum defocus (nm)	Not provided	
Magnification	Not provided	
Image detector	GATAN K2 SUMMIT (4k x 4k)	Depositor
Maximum map value	0.182	Depositor
Minimum map value	-0.094	Depositor
Average map value	0.000	Depositor
Map value standard deviation	0.006	Depositor
Recommended contour level	0.02	Depositor
Map size (Å)	332.8, 332.8, 332.8	wwPDB
Map dimensions	256, 256, 256	wwPDB
Map angles (°)	90.0, 90.0, 90.0	wwPDB
Pixel spacing (Å)	1.3, 1.3, 1.3	Depositor

## 5 Model quality [i](#)

### 5.1 Standard geometry [i](#)

Bond lengths and bond angles in the following residue types are not validated in this section: 1N7, MG, ZN

The Z score for a bond length (or angle) is the number of standard deviations the observed value is removed from the expected value. A bond length (or angle) with  $|Z| > 5$  is considered an outlier worth inspection. RMSZ is the root-mean-square of all Z scores of the bond lengths (or angles).

Mol	Chain	Bond lengths		Bond angles	
		RMSZ	# Z  >5	RMSZ	# Z  >5
1	J	0.48	0/10625	0.57	1/14345 (0.0%)
2	N	0.43	0/581	0.54	0/785
3	G	0.47	0/1786	0.56	0/2423
3	H	0.42	0/1701	0.56	0/2306
3	M	0.26	0/579	0.48	0/784
4	I	0.52	2/10717 (0.0%)	0.57	3/14461 (0.0%)
5	K	0.40	0/602	0.47	0/810
6	L	0.33	0/4466	0.49	0/6014
7	O	0.68	0/1150	1.01	0/1771
8	P	0.65	0/1148	1.00	0/1771
All	All	0.48	2/33355 (0.0%)	0.60	4/45470 (0.0%)

Chiral center outliers are detected by calculating the chiral volume of a chiral center and verifying if the center is modelled as a planar moiety or with the opposite hand. A planarity outlier is detected by checking planarity of atoms in a peptide group, atoms in a mainchain group or atoms of a sidechain that are expected to be planar.

Mol	Chain	#Chirality outliers	#Planarity outliers
1	J	0	5
4	I	0	5
All	All	0	10

All (2) bond length outliers are listed below:

Mol	Chain	Res	Type	Atoms	Z	Observed(Å)	Ideal(Å)
4	I	1081	PRO	N-CD	-6.69	1.38	1.47
4	I	1078	LYS	C-O	-5.61	1.12	1.23

All (4) bond angle outliers are listed below:

Mol	Chain	Res	Type	Atoms	Z	Observed(°)	Ideal(°)
4	I	1081	PRO	N-CD-CG	-5.99	94.21	103.20
1	J	362	ARG	C-N-CA	-5.89	106.98	121.70
4	I	1081	PRO	N-CA-CB	-5.50	96.55	102.60
4	I	1079	ILE	N-CA-C	-5.04	97.39	111.00

There are no chirality outliers.

5 of 10 planarity outliers are listed below:

Mol	Chain	Res	Type	Group
1	J	1184	ASP	Peptide
1	J	416	ILE	Peptide
1	J	711	GLY	Peptide
1	J	853	THR	Peptide
1	J	934	THR	Peptide

## 5.2 Too-close contacts

In the following table, the Non-H and H(model) columns list the number of non-hydrogen atoms and hydrogen atoms in the chain respectively. The H(added) column lists the number of hydrogen atoms added and optimized by MolProbity. The Clashes column lists the number of clashes within the asymmetric unit, whereas Symm-Clashes lists symmetry-related clashes.

Mol	Chain	Non-H	H(model)	H(added)	Clashes	Symm-Clashes
1	J	10466	0	10689	915	0
2	N	571	0	556	38	0
3	G	1764	0	1793	139	0
3	H	1682	0	1702	147	0
3	M	572	0	602	81	0
4	I	10549	0	10565	838	0
5	K	600	0	607	43	0
6	L	4411	0	4418	411	0
7	O	1024	0	562	68	0
8	P	1026	0	569	72	0
9	J	1	0	0	0	0
10	J	2	0	0	0	0
10	N	1	0	0	0	0
11	I	27	39	37	5	0
11	J	81	117	113	14	0
All	All	32777	156	32213	2593	0

The all-atom clashscore is defined as the number of clashes found per 1000 atoms (including hydrogen atoms). The all-atom clashscore for this structure is 40.



The worst 5 of 2593 close contacts within the same asymmetric unit are listed below, sorted by their clash magnitude.

Atom-1	Atom-2	Interatomic distance (Å)	Clash overlap (Å)
11:J:1504:1N7:C19	11:J:1504:1N7:C3	1.83	1.57
11:J:1506:1N7:C3	11:J:1506:1N7:C19	1.82	1.57
11:I:1401:1N7:C3	11:I:1401:1N7:C19	1.82	1.56
11:J:1505:1N7:C3	11:J:1505:1N7:C19	1.82	1.56
1:J:937:ILE:CD1	1:J:1134:ILE:HG22	1.57	1.34

There are no symmetry-related clashes.

## 5.3 Torsion angles [i](#)

### 5.3.1 Protein backbone [i](#)

In the following table, the Percentiles column shows the percent Ramachandran outliers of the chain as a percentile score with respect to all PDB entries followed by that with respect to all EM entries.

The Analysed column shows the number of residues for which the backbone conformation was analysed, and the total number of residues.

Mol	Chain	Analysed	Favoured	Allowed	Outliers	Percentiles	
1	J	1339/1430 (94%)	1190 (89%)	146 (11%)	3 (0%)	47	78
2	N	70/72 (97%)	65 (93%)	5 (7%)	0	100	100
3	G	228/329 (69%)	209 (92%)	19 (8%)	0	100	100
3	H	215/329 (65%)	193 (90%)	22 (10%)	0	100	100
3	M	71/329 (22%)	68 (96%)	3 (4%)	0	100	100
4	I	1337/1342 (100%)	1172 (88%)	158 (12%)	7 (0%)	29	61
5	K	73/91 (80%)	70 (96%)	3 (4%)	0	100	100
6	L	543/616 (88%)	501 (92%)	41 (8%)	1 (0%)	47	78
All	All	3876/4538 (85%)	3468 (90%)	397 (10%)	11 (0%)	44	72

5 of 11 Ramachandran outliers are listed below:

Mol	Chain	Res	Type
1	J	854	ALA
4	I	200	ARG
4	I	518	ASN

*Continued on next page...*

*Continued from previous page...*

Mol	Chain	Res	Type
4	I	898	GLU
4	I	199	ASP

### 5.3.2 Protein sidechains ⓘ

In the following table, the Percentiles column shows the percent sidechain outliers of the chain as a percentile score with respect to all PDB entries followed by that with respect to all EM entries.

The Analysed column shows the number of residues for which the sidechain conformation was analysed, and the total number of residues.

Mol	Chain	Analysed	Rotameric	Outliers	Percentiles	
1	J	1128/1189 (95%)	1025 (91%)	103 (9%)	9	32
2	N	61/61 (100%)	54 (88%)	7 (12%)	5	20
3	G	193/286 (68%)	170 (88%)	23 (12%)	5	19
3	H	185/286 (65%)	174 (94%)	11 (6%)	19	49
3	M	65/286 (23%)	60 (92%)	5 (8%)	13	40
4	I	1152/1157 (100%)	1037 (90%)	115 (10%)	7	27
5	K	65/75 (87%)	60 (92%)	5 (8%)	13	40
6	L	475/543 (88%)	433 (91%)	42 (9%)	10	33
All	All	3324/3883 (86%)	3013 (91%)	311 (9%)	12	30

5 of 311 residues with a non-rotameric sidechain are listed below:

Mol	Chain	Res	Type
4	I	992	LEU
6	L	366	SER
4	I	1065	LYS
5	K	42	GLU
6	L	530	LEU

Sometimes sidechains can be flipped to improve hydrogen bonding and reduce clashes. 5 of 49 such sidechains are listed below:

Mol	Chain	Res	Type
4	I	1134	GLN
5	K	61	ASN
4	I	1136	GLN

*Continued on next page...*

*Continued from previous page...*

Mol	Chain	Res	Type
4	I	1264	GLN
6	L	227	GLN

### 5.3.3 RNA ⓘ

There are no RNA molecules in this entry.

## 5.4 Non-standard residues in protein, DNA, RNA chains ⓘ

There are no non-standard protein/DNA/RNA residues in this entry.

## 5.5 Carbohydrates ⓘ

There are no monosaccharides in this entry.

## 5.6 Ligand geometry ⓘ

Of 8 ligands modelled in this entry, 4 are monoatomic - leaving 4 for Mogul analysis.

In the following table, the Counts columns list the number of bonds (or angles) for which Mogul statistics could be retrieved, the number of bonds (or angles) that are observed in the model and the number of bonds (or angles) that are defined in the Chemical Component Dictionary. The Link column lists molecule types, if any, to which the group is linked. The Z score for a bond length (or angle) is the number of standard deviations the observed value is removed from the expected value. A bond length (or angle) with  $|Z| > 2$  is considered an outlier worth inspection. RMSZ is the root-mean-square of all Z scores of the bond lengths (or angles).

Mol	Type	Chain	Res	Link	Bond lengths			Bond angles		
					Counts	RMSZ	# $ Z  > 2$	Counts	RMSZ	# $ Z  > 2$
11	1N7	I	1401	-	30,30,46	4.82	13 (43%)	47,48,72	2.31	19 (40%)
11	1N7	J	1504	-	30,30,46	4.92	15 (50%)	47,48,72	2.37	20 (42%)
11	1N7	J	1506	-	30,30,46	4.87	14 (46%)	47,48,72	2.16	15 (31%)
11	1N7	J	1505	-	30,30,46	4.95	17 (56%)	47,48,72	2.31	16 (34%)

In the following table, the Chirals column lists the number of chiral outliers, the number of chiral centers analysed, the number of these observed in the model and the number defined in the Chemical Component Dictionary. Similar counts are reported in the Torsion and Rings columns. '-' means no outliers of that kind were identified.

Mol	Type	Chain	Res	Link	Chirals	Torsions	Rings
11	1N7	I	1401	-	-	0/7/72/92	0/4/4/4
11	1N7	J	1504	-	-	0/7/72/92	0/4/4/4
11	1N7	J	1506	-	-	0/7/72/92	0/4/4/4
11	1N7	J	1505	-	-	1/7/72/92	0/4/4/4

The worst 5 of 59 bond length outliers are listed below:

Mol	Chain	Res	Type	Atoms	Z	Observed(Å)	Ideal(Å)
11	J	1504	1N7	C3-C19	17.72	1.83	1.53
11	J	1506	1N7	C3-C19	17.51	1.82	1.53
11	J	1505	1N7	C3-C19	17.35	1.82	1.53
11	I	1401	1N7	C3-C19	17.22	1.82	1.53
11	J	1504	1N7	C3-C4	11.92	1.73	1.53

The worst 5 of 70 bond angle outliers are listed below:

Mol	Chain	Res	Type	Atoms	Z	Observed(°)	Ideal(°)
11	I	1401	1N7	C7-C6-C18	-7.13	108.36	118.33
11	J	1505	1N7	C7-C6-C18	-6.50	109.24	118.33
11	J	1504	1N7	C7-C6-C18	-6.04	109.89	118.33
11	J	1506	1N7	C3-C19-C18	-5.64	102.62	110.88
11	J	1505	1N7	C9-C5-C4	-5.50	112.65	117.67

There are no chirality outliers.

All (1) torsion outliers are listed below:

Mol	Chain	Res	Type	Atoms
11	J	1505	1N7	C20-C22-C23-C24

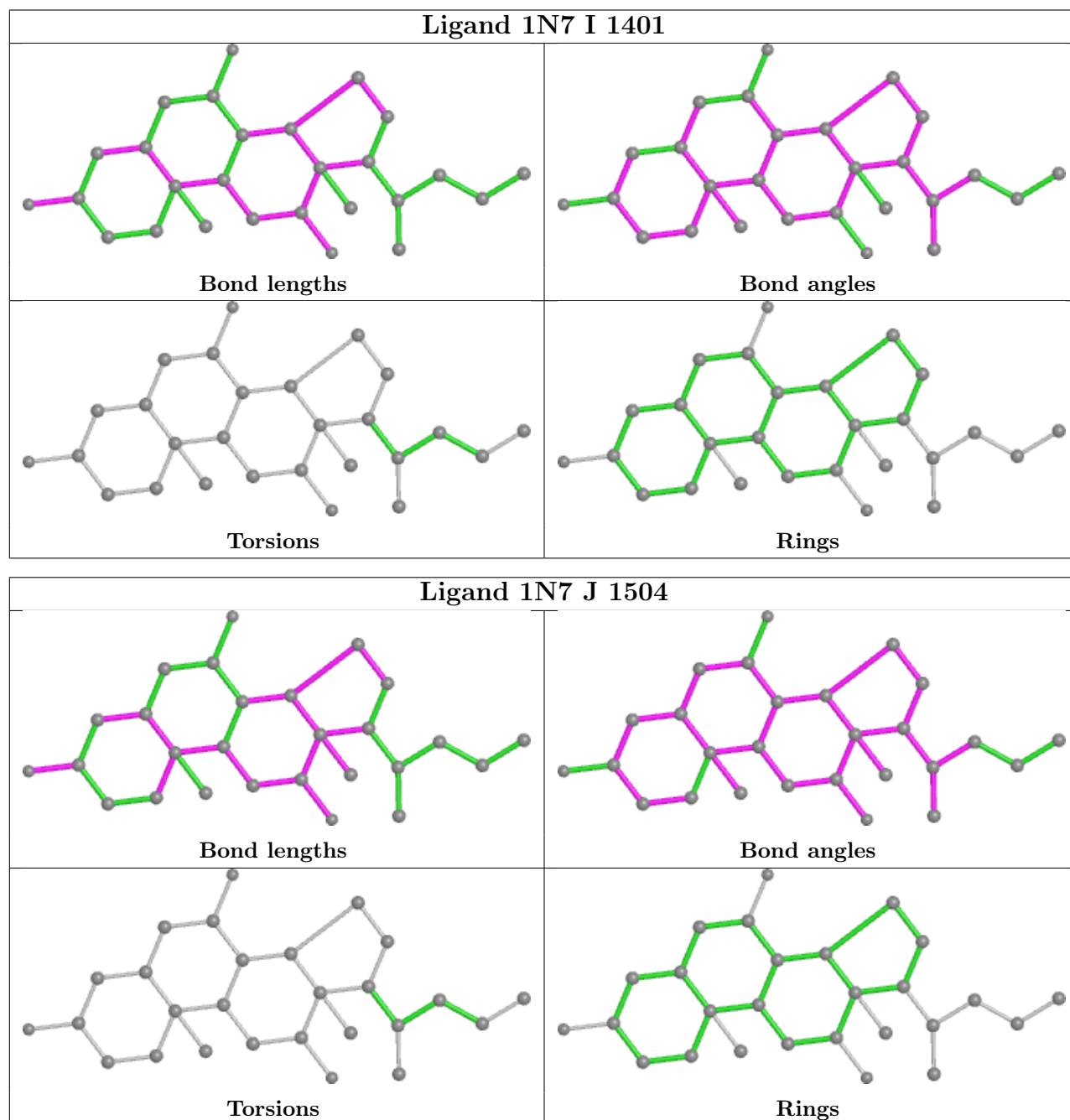
There are no ring outliers.

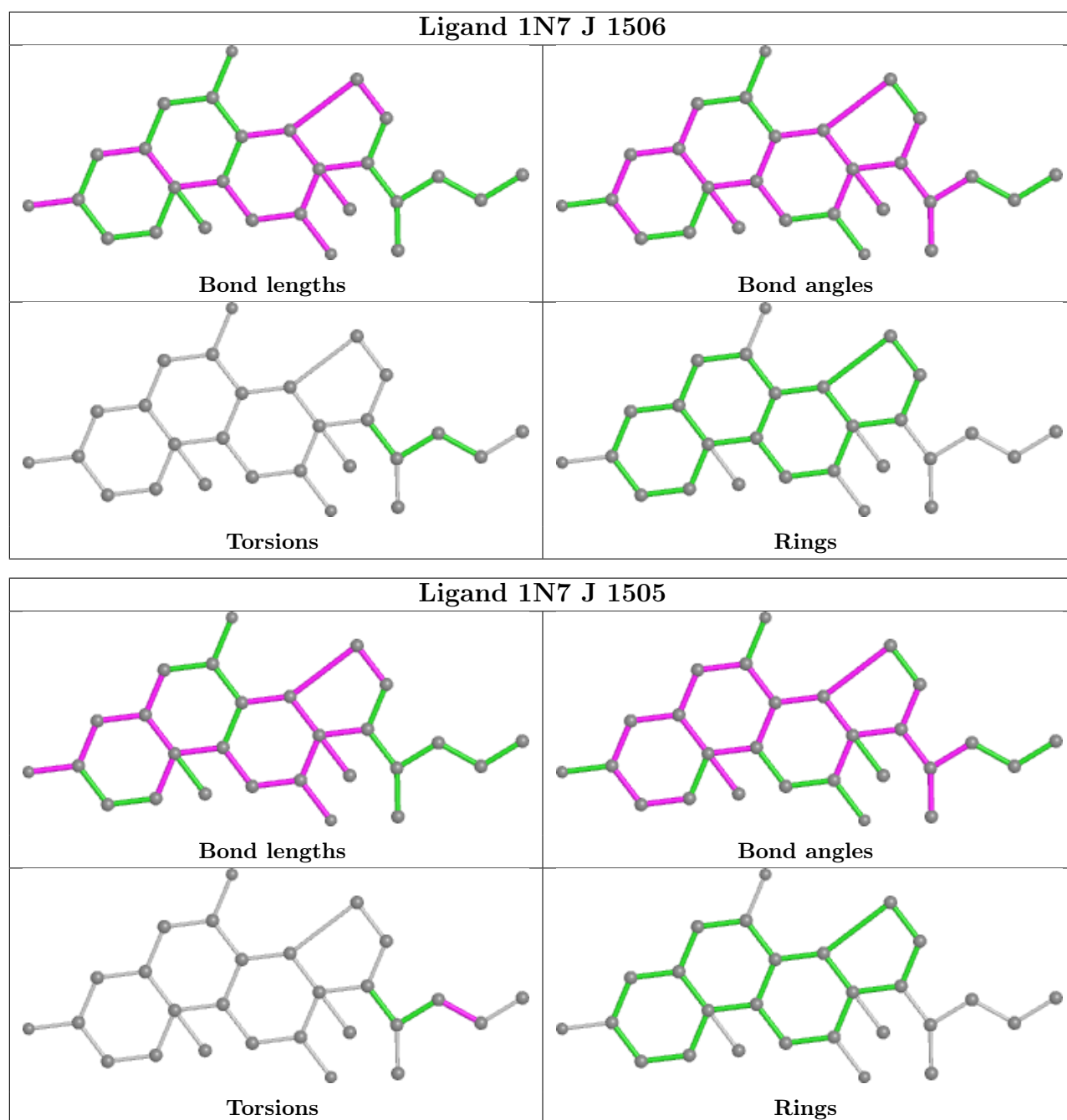
4 monomers are involved in 19 short contacts:

Mol	Chain	Res	Type	Clashes	Symm-Clashes
11	I	1401	1N7	5	0
11	J	1504	1N7	5	0
11	J	1506	1N7	5	0
11	J	1505	1N7	4	0

The following is a two-dimensional graphical depiction of Mogul quality analysis of bond lengths, bond angles, torsion angles, and ring geometry for all instances of the Ligand of Interest. In addition, ligands with molecular weight > 250 and outliers as shown on the validation Tables will also be included. For torsion angles, if less than 5% of the Mogul distribution of torsion angles is

within 10 degrees of the torsion angle in question, then that torsion angle is considered an outlier. Any bond that is central to one or more torsion angles identified as an outlier by Mogul will be highlighted in the graph. For rings, the root-mean-square deviation (RMSD) between the ring in question and similar rings identified by Mogul is calculated over all ring torsion angles. If the average RMSD is greater than 60 degrees and the minimal RMSD between the ring in question and any Mogul-identified rings is also greater than 60 degrees, then that ring is considered an outlier. The outliers are highlighted in purple. The color gray indicates Mogul did not find sufficient equivalents in the CSD to analyse the geometry.





## 5.7 Other polymers [i](#)

There are no such residues in this entry.

## 5.8 Polymer linkage issues [i](#)

There are no chain breaks in this entry.

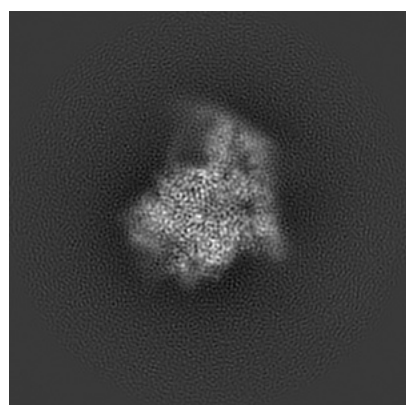
## 6 Map visualisation [i](#)

This section contains visualisations of the EMDB entry EMD-20460. These allow visual inspection of the internal detail of the map and identification of artifacts.

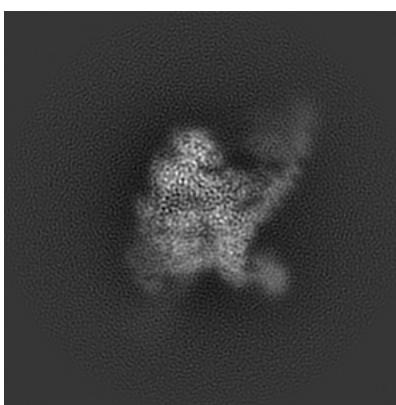
No raw map or half-maps were deposited for this entry and therefore no images, graphs, etc. pertaining to the raw map can be shown.

### 6.1 Orthogonal projections [i](#)

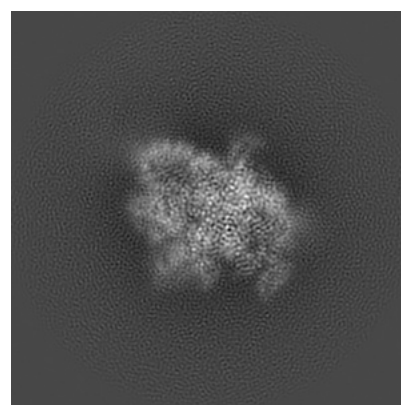
#### 6.1.1 Primary map



X



Y

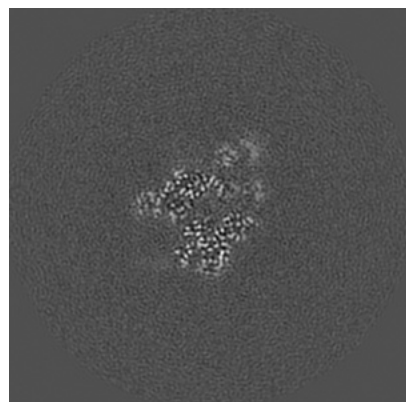


Z

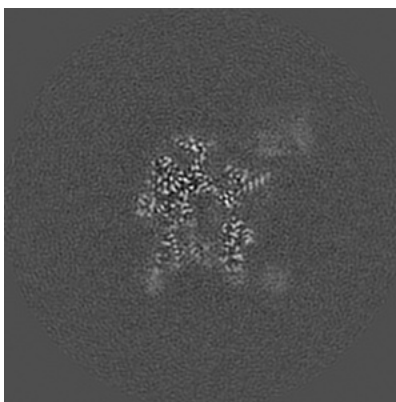
The images above show the map projected in three orthogonal directions.

### 6.2 Central slices [i](#)

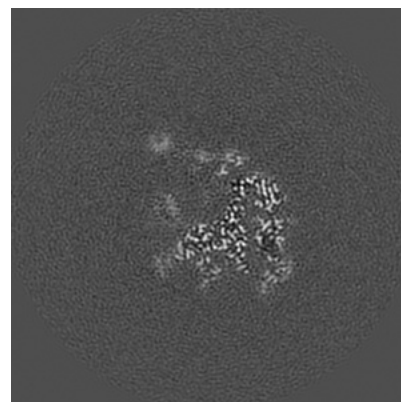
#### 6.2.1 Primary map



X Index: 128



Y Index: 128



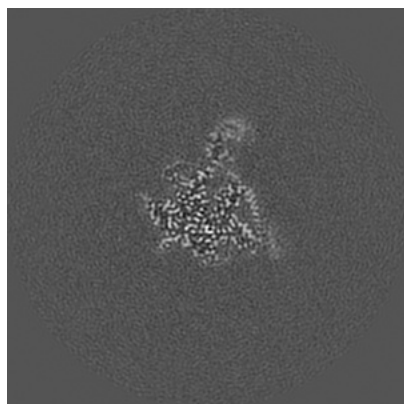
Z Index: 128



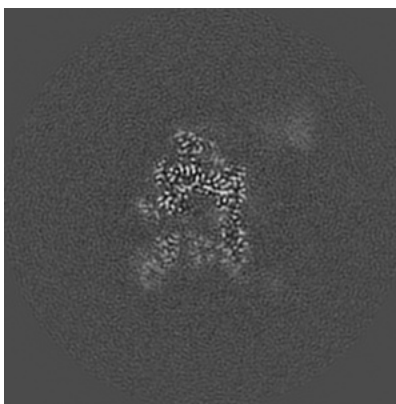
The images above show central slices of the map in three orthogonal directions.

## 6.3 Largest variance slices [i](#)

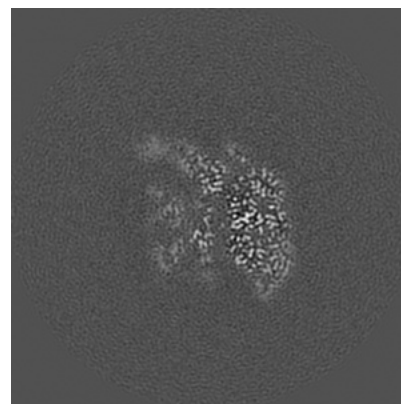
### 6.3.1 Primary map



X Index: 146



Y Index: 123

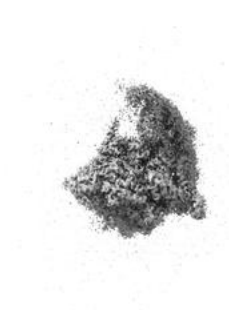


Z Index: 121

The images above show the largest variance slices of the map in three orthogonal directions.

## 6.4 Orthogonal surface views [i](#)

### 6.4.1 Primary map



X



Y



Z

The images above show the 3D surface view of the map at the recommended contour level 0.02. These images, in conjunction with the slice images, may facilitate assessment of whether an appropriate contour level has been provided.



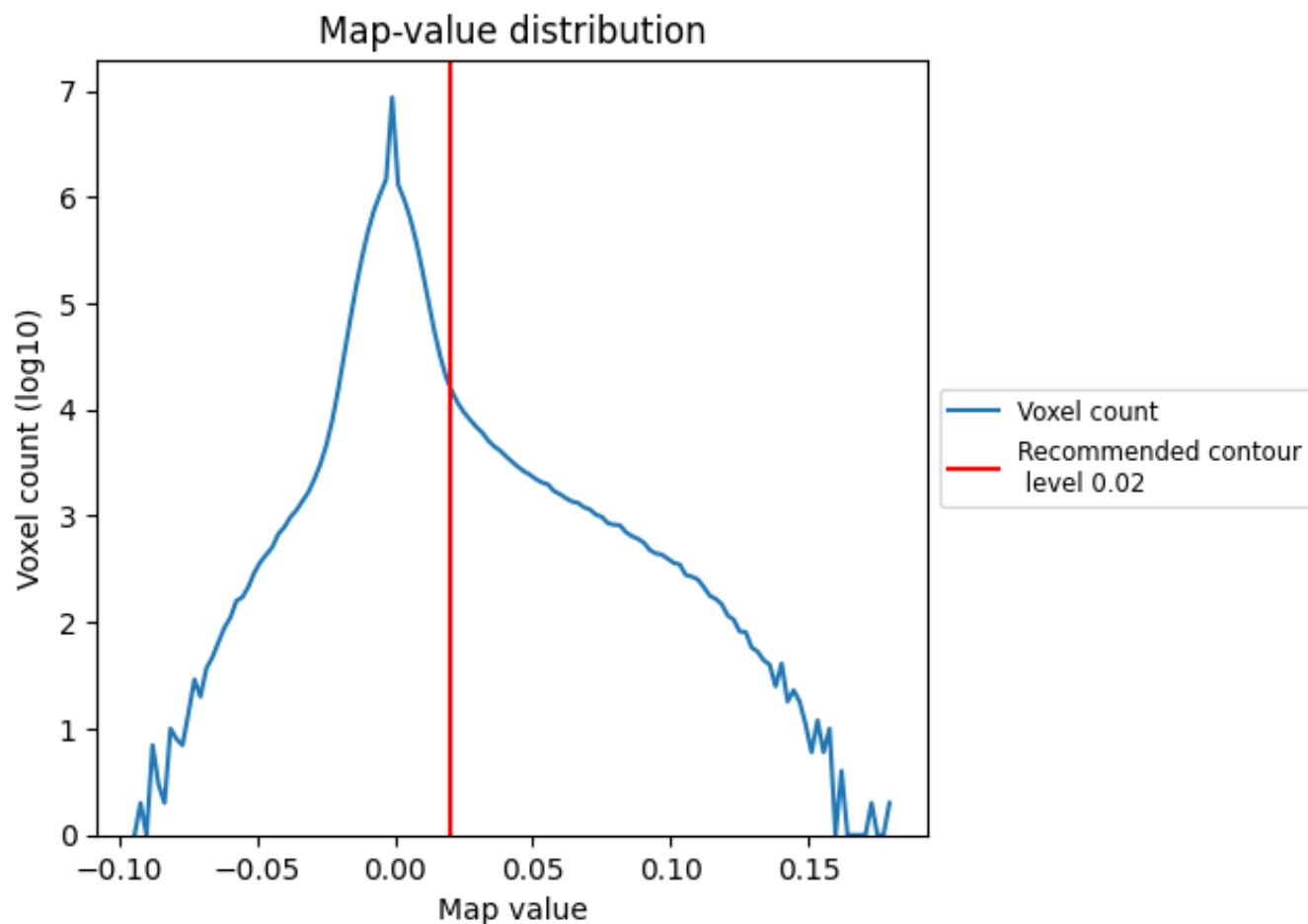
## 6.5 Mask visualisation

This section was not generated. No masks/segmentation were deposited.

## 7 Map analysis [i](#)

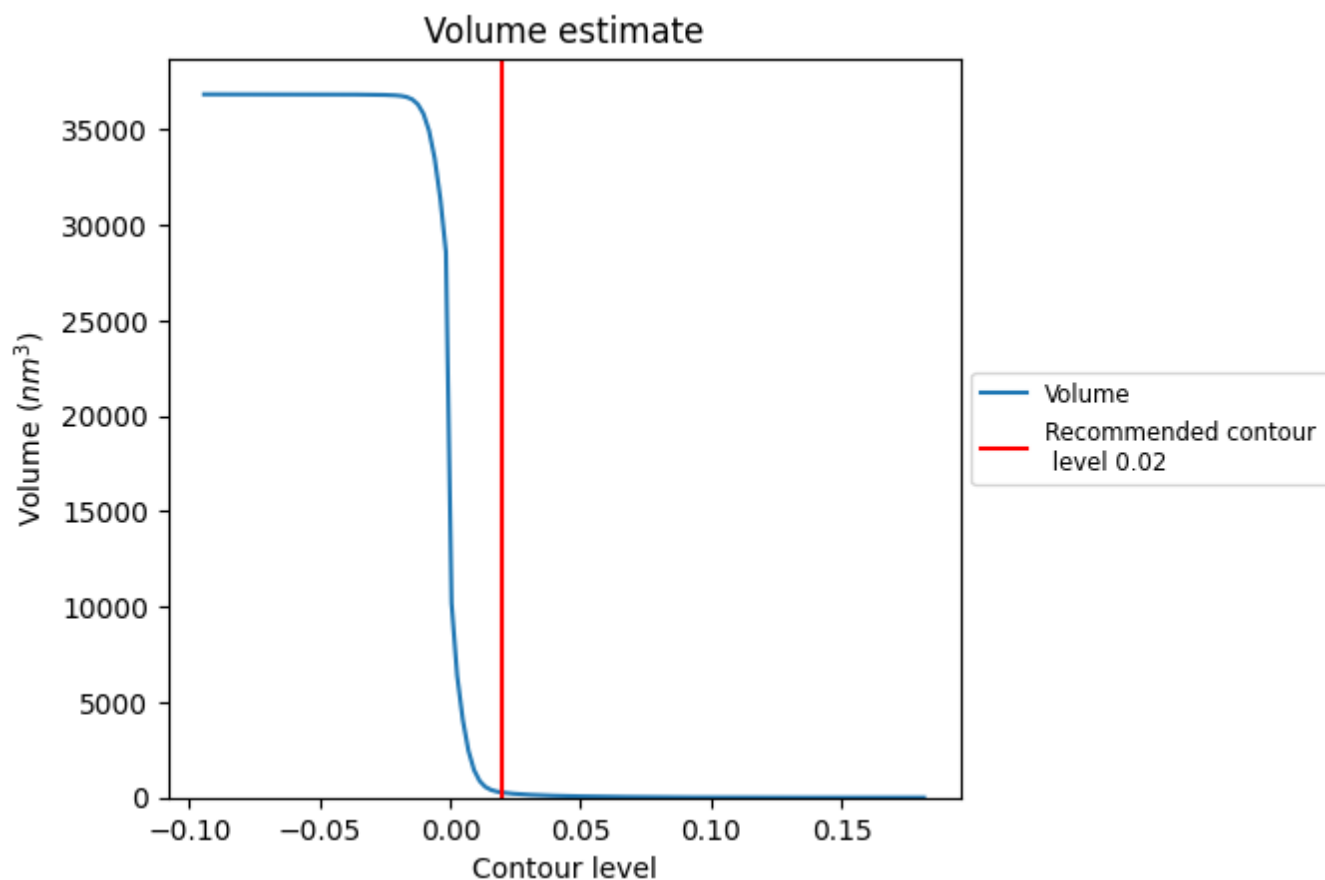
This section contains the results of statistical analysis of the map.

### 7.1 Map-value distribution [i](#)



The map-value distribution is plotted in 128 intervals along the x-axis. The y-axis is logarithmic. A spike in this graph at zero usually indicates that the volume has been masked.

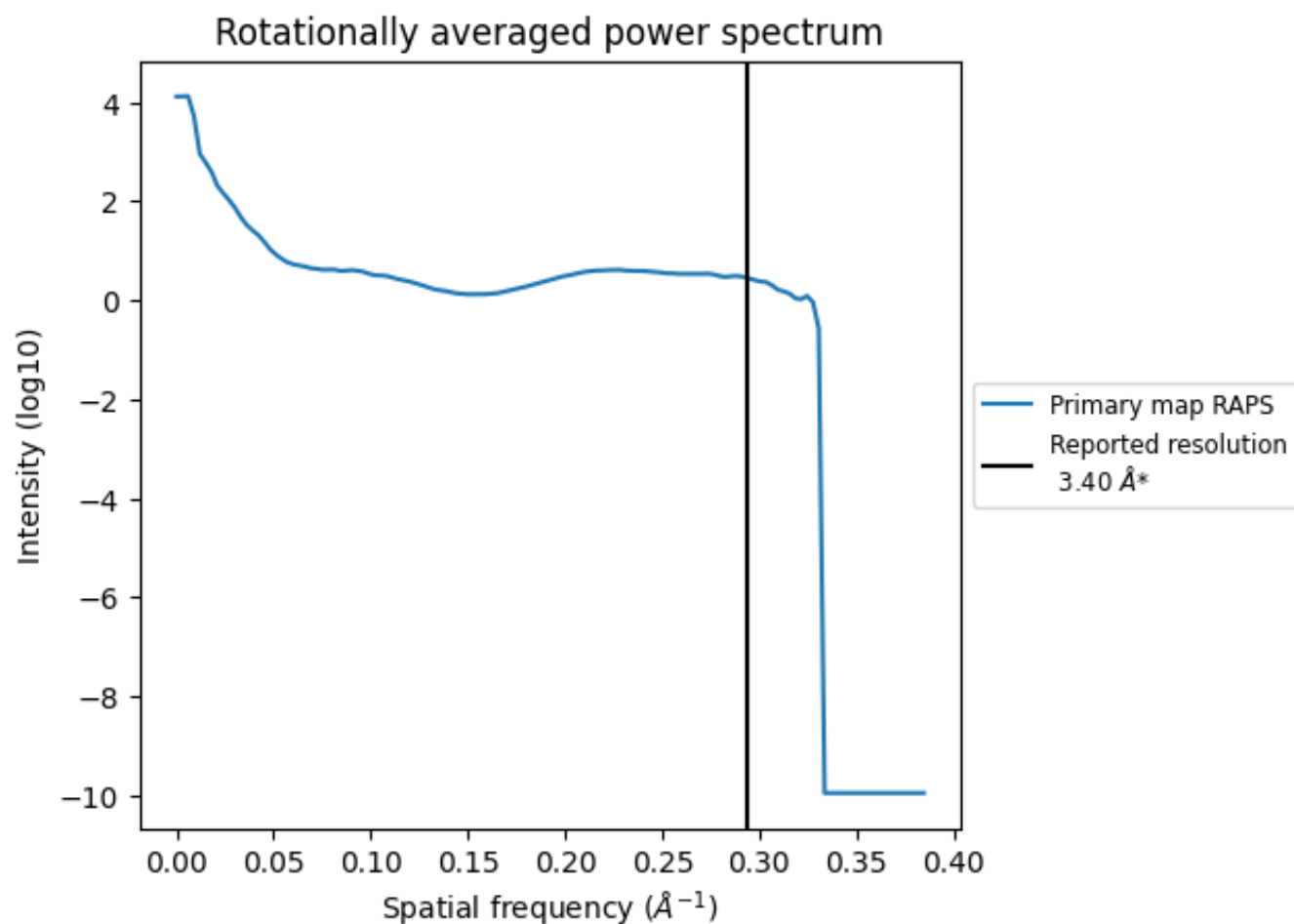
## 7.2 Volume estimate [i](#)



The volume at the recommended contour level is 264 nm<sup>3</sup>; this corresponds to an approximate mass of 238 kDa.

The volume estimate graph shows how the enclosed volume varies with the contour level. The recommended contour level is shown as a vertical line and the intersection between the line and the curve gives the volume of the enclosed surface at the given level.

### 7.3 Rotationally averaged power spectrum ⓘ

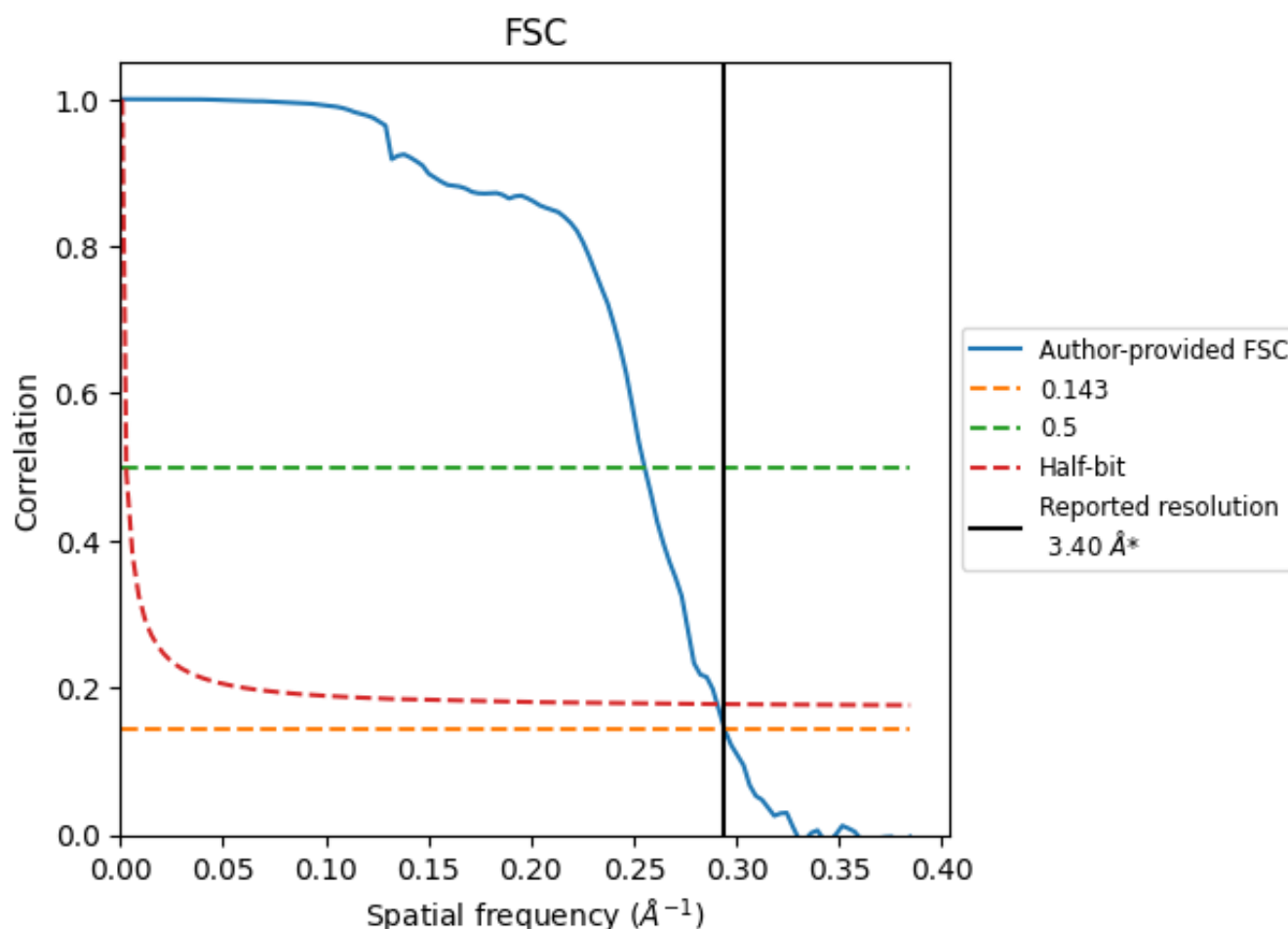


\*Reported resolution corresponds to spatial frequency of 0.294 Å<sup>-1</sup>

## 8 Fourier-Shell correlation [i](#)

Fourier-Shell Correlation (FSC) is the most commonly used method to estimate the resolution of single-particle and subtomogram-averaged maps. The shape of the curve depends on the imposed symmetry, mask and whether or not the two 3D reconstructions used were processed from a common reference. The reported resolution is shown as a black line. A curve is displayed for the half-bit criterion in addition to lines showing the 0.143 gold standard cut-off and 0.5 cut-off.

### 8.1 FSC [i](#)



\*Reported resolution corresponds to spatial frequency of 0.294 Å<sup>-1</sup>

## 8.2 Resolution estimates [i](#)

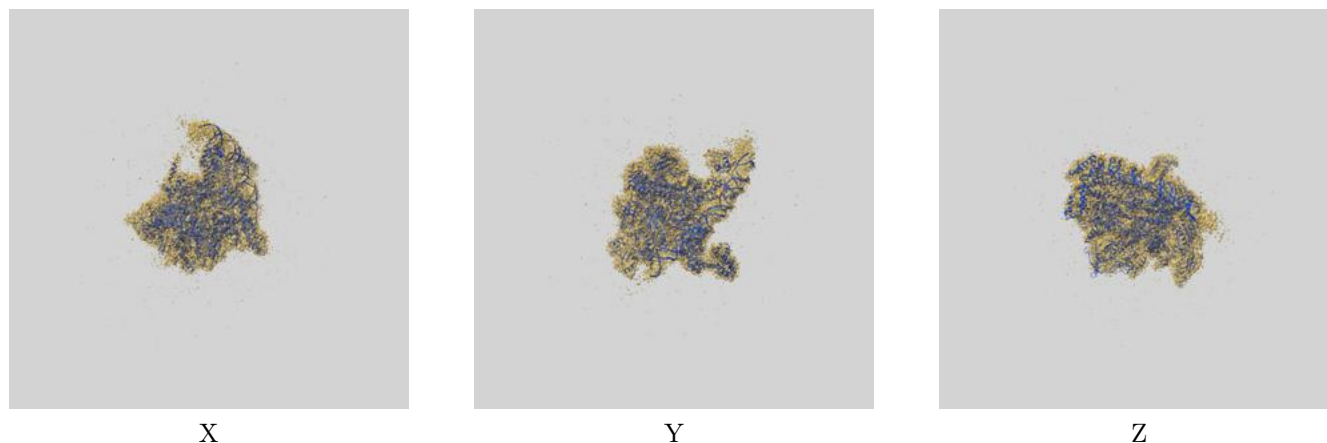
Resolution estimate (Å)	Estimation criterion (FSC cut-off)		
	0.143	0.5	Half-bit
Reported by author	3.40	-	-
Author-provided FSC curve	3.40	3.92	3.44
Unmasked-calculated*	-	-	-

\*Resolution estimate based on FSC curve calculated by comparison of deposited half-maps.

## 9 Map-model fit [i](#)

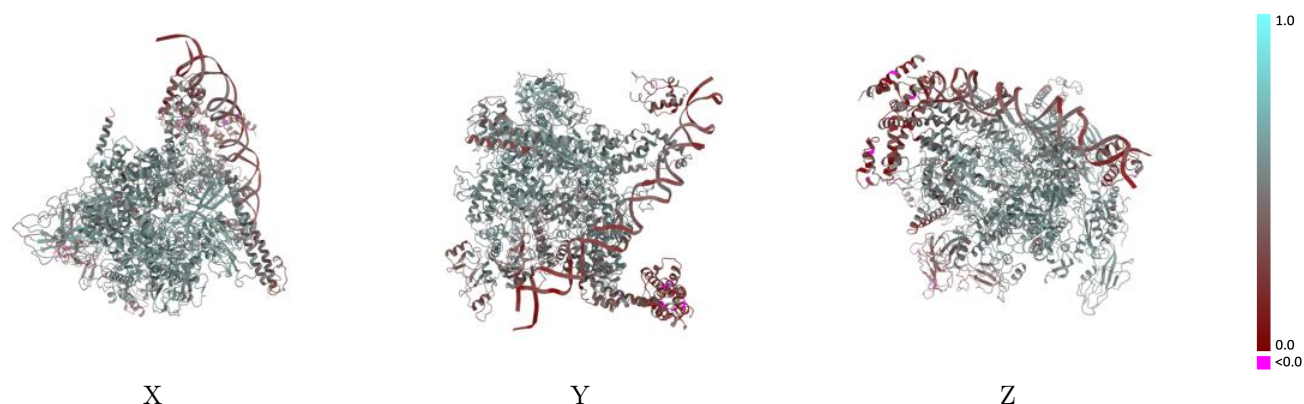
This section contains information regarding the fit between EMDB map EMD-20460 and PDB model 6PSQ. Per-residue inclusion information can be found in [section 3](#) on [page 8](#).

### 9.1 Map-model overlay [i](#)



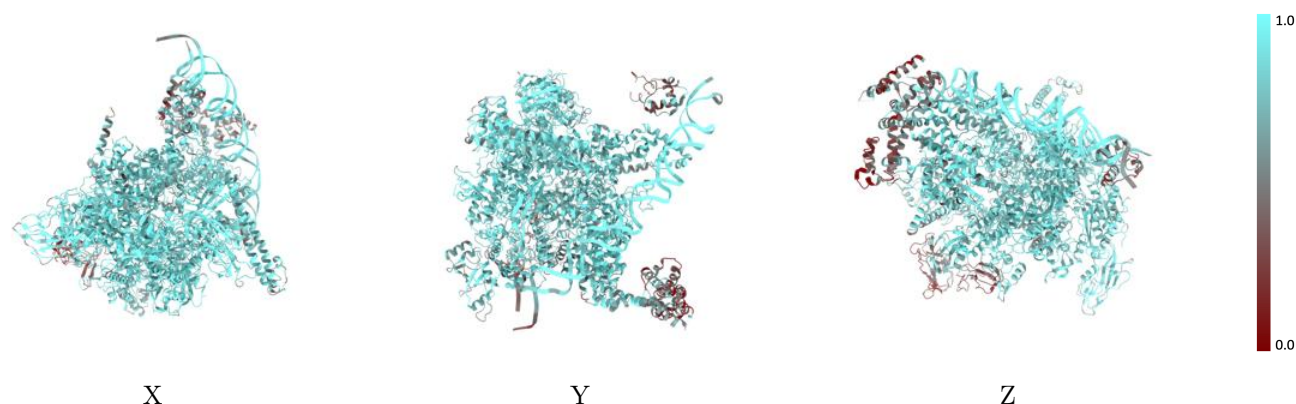
The images above show the 3D surface view of the map at the recommended contour level 0.02 at 50% transparency in yellow overlaid with a ribbon representation of the model coloured in blue. These images allow for the visual assessment of the quality of fit between the atomic model and the map.

## 9.2 Q-score mapped to coordinate model [i](#)



The images above show the model with each residue coloured according to its Q-score. This shows their resolvability in the map with higher Q-score values reflecting better resolvability. Please note: Q-score is calculating the resolvability of atoms, and thus high values are only expected at resolutions at which atoms can be resolved. Low Q-score values may therefore be expected for many entries.

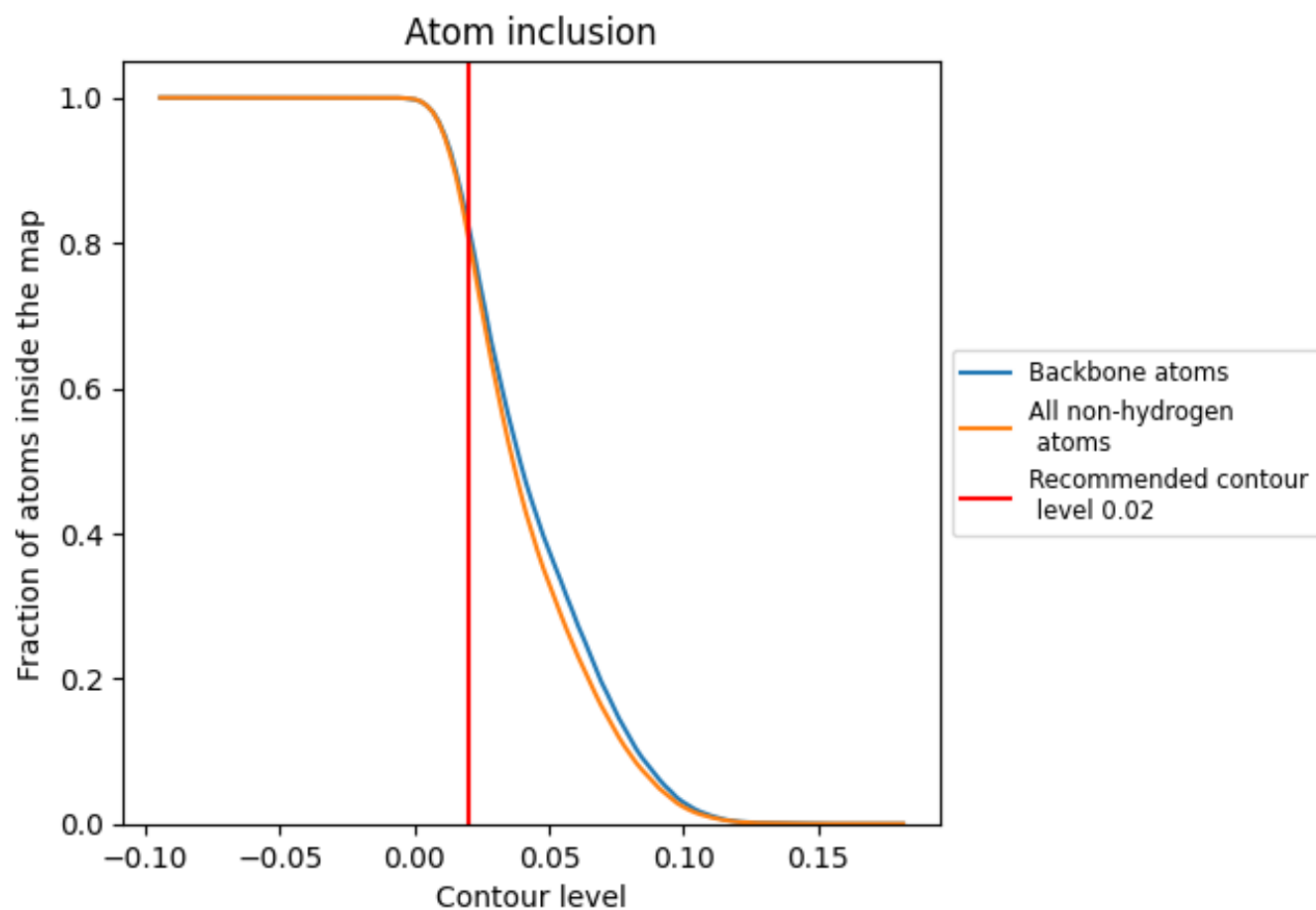
## 9.3 Atom inclusion mapped to coordinate model [i](#)



The images above show the model with each residue coloured according to its atom inclusion. This shows to what extent they are inside the map at the recommended contour level (0.02).



## 9.4 Atom inclusion [i](#)



At the recommended contour level, 83% of all backbone atoms, 81% of all non-hydrogen atoms, are inside the map.

9.5 Map-model fit summary ⓘ

The table lists the average atom inclusion at the recommended contour level (0.02) and Q-score for the entire model and for each chain.

Chain	Atom inclusion	Q-score
All	<div></div> 0.8099	<div></div> 0.4790
G	<div></div> 0.8924	<div></div> 0.5500
H	<div></div> 0.8715	<div></div> 0.5180
I	<div></div> 0.8759	<div></div> 0.5230
J	<div></div> 0.7994	<div></div> 0.4970
K	<div></div> 0.7791	<div></div> 0.5300
L	<div></div> 0.6744	<div></div> 0.3920
M	<div></div> 0.4661	<div></div> 0.3170
N	<div></div> 0.8705	<div></div> 0.5140
O	<div></div> 0.8232	<div></div> 0.2800
P	<div></div> 0.8246	<div></div> 0.2730

1.0  
0.0  
<0.0