



# Full wwPDB X-ray Structure Validation Report ⓘ

Oct 12, 2020 – 10:11 AM EDT

PDB ID : 6PWL  
Title : ADC-7 in complex with boronic acid transition state inhibitor LP06  
Authors : Curtis, B.C.; Powers, R.A.; Wallar, B.J.  
Deposited on : 2019-07-23  
Resolution : 1.67 Å(reported)

This is a Full wwPDB X-ray Structure Validation Report for a publicly released PDB entry.

We welcome your comments at [validation@mail.wwpdb.org](mailto:validation@mail.wwpdb.org)

A user guide is available at

<https://www.wwpdb.org/validation/2017/XrayValidationReportHelp>

with specific help available everywhere you see the ⓘ symbol.

---

The following versions of software and data (see [references ⓘ](#)) were used in the production of this report:

MolProbity : 4.02b-467  
Mogul : 1.8.5 (274361), CSD as541be (2020)  
Xtriage (Phenix) : 1.13  
EDS : 2.14.6  
buster-report : 1.1.7 (2018)  
Percentile statistics : 20191225.v01 (using entries in the PDB archive December 25th 2019)  
Refmac : 5.8.0158  
CCP4 : 7.0.044 (Gargrove)  
Ideal geometry (proteins) : Engh & Huber (2001)  
Ideal geometry (DNA, RNA) : Parkinson et al. (1996)  
Validation Pipeline (wwPDB-VP) : 2.14.6

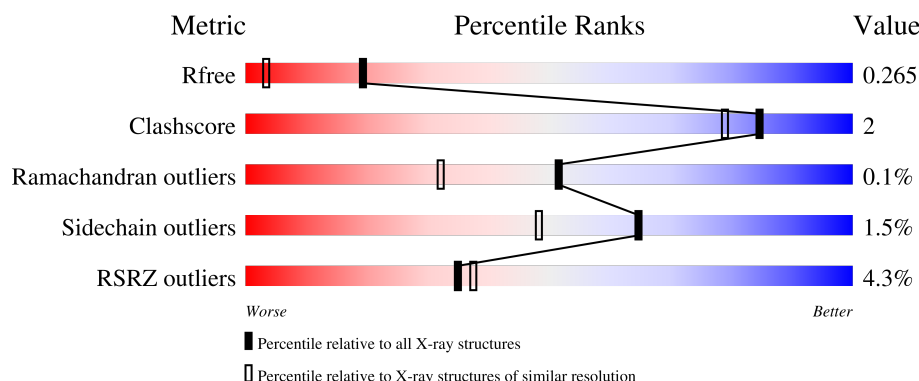
# 1 Overall quality at a glance

The following experimental techniques were used to determine the structure:

## *X-RAY DIFFRACTION*

The reported resolution of this entry is 1.67 Å.

Percentile scores (ranging between 0-100) for global validation metrics of the entry are shown in the following graphic. The table shows the number of entries on which the scores are based.



Metric	Whole archive (#Entries)	Similar resolution (#Entries, resolution range(Å))
$R_{free}$	130704	6780 (1.70-1.66)
Clashscore	141614	7310 (1.70-1.66)
Ramachandran outliers	138981	7173 (1.70-1.66)
Sidechain outliers	138945	7172 (1.70-1.66)
RSRZ outliers	127900	6661 (1.70-1.66)

The table below summarises the geometric issues observed across the polymeric chains and their fit to the electron density. The red, orange, yellow and green segments on the lower bar indicate the fraction of residues that contain outliers for  $\geq 3$ , 2, 1 and 0 types of geometric quality criteria respectively. A grey segment represents the fraction of residues that are not modelled. The numeric value for each fraction is indicated below the corresponding segment, with a dot representing fractions  $\leq 5\%$ . The upper red bar (where present) indicates the fraction of residues that have poor fit to the electron density. The numeric value is given above the bar.

Mol	Chain	Length	Quality of chain
1	A	361	
1	B	361	
1	C	361	
1	D	361	

## 2 Entry composition

There are 4 unique types of molecules in this entry. The entry contains 11791 atoms, of which 0 are hydrogens and 0 are deuteriums.

In the tables below, the ZeroOcc column contains the number of atoms modelled with zero occupancy, the AltConf column contains the number of residues with at least one atom in alternate conformation and the Trace column contains the number of residues modelled with at most 2 atoms.

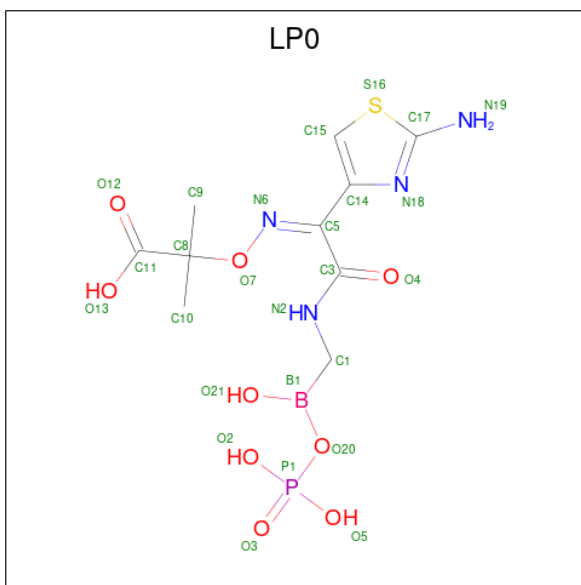
- Molecule 1 is a protein called Beta-lactamase.

Mol	Chain	Residues	Atoms					ZeroOcc	AltConf	Trace
1	A	356	Total	C	N	O	S	0	3	0
			2822	1811	471	531	9			
1	B	358	Total	C	N	O	S	0	5	0
			2876	1846	478	543	9			
1	C	355	Total	C	N	O	S	0	2	0
			2714	1742	449	514	9			
1	D	354	Total	C	N	O	S	0	0	0
			2699	1735	447	508	9			

There are 4 discrepancies between the modelled and reference sequences:

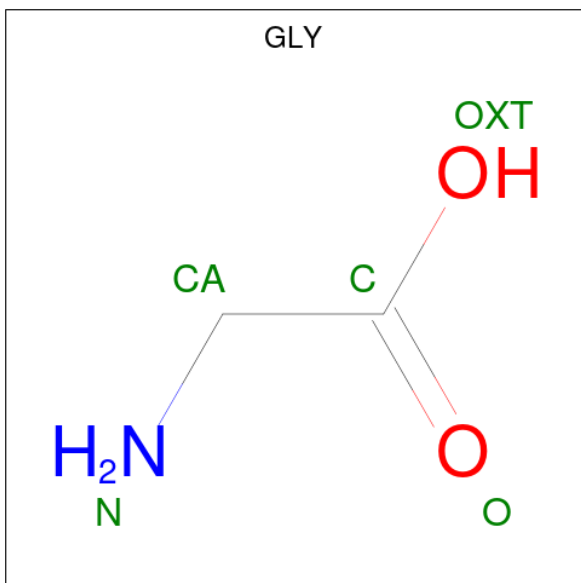
Chain	Residue	Modelled	Actual	Comment	Reference
A	-1	MET	-	expression tag	UNP Q6DRA1
B	-1	MET	-	expression tag	UNP Q6DRA1
C	-1	MET	-	expression tag	UNP Q6DRA1
D	-1	MET	-	expression tag	UNP Q6DRA1

- Molecule 2 is (7Z)-7-(2-amino-1,3-thiazol-4-yl)-1,1,3-trihydroxy-10,10-dimethyl-1,6-dioxo-2,9-dioxo-5,8-diaza-11lambda 5 -phospha-3-boraundec-7-en-11-oic acid (three-letter code: LP0) (formula: C<sub>10</sub>H<sub>16</sub>BN<sub>4</sub>O<sub>9</sub>PS) (labeled as "Ligand of Interest" by author).



Mol	Chain	Residues	Atoms							ZeroOcc	AltConf
			Total	B	C	N	O	P	S		
2	A	1	Total 26	1	10	4	9	1	1	0	0
2	B	1	Total 26	1	10	4	9	1	1	0	0
2	C	1	Total 26	1	10	4	9	1	1	0	0
2	D	1	Total 26	1	10	4	9	1	1	0	0

- Molecule 3 is GLYCINE (three-letter code: GLY) (formula:  $C_2H_5NO_2$ ).



Mol	Chain	Residues	Atoms				ZeroOcc	AltConf
3	C	1	Total	C	N	O	0	0
			5	2	1	2		

- Molecule 4 is water.

Mol	Chain	Residues	Atoms		ZeroOcc	AltConf
4	A	154	Total	O	0	8
			162	162		
4	B	236	Total	O	0	9
			246	246		
4	C	82	Total	O	0	5
			87	87		
4	D	73	Total	O	0	3
			76	76		

### 3 Residue-property plots [i](#)

These plots are drawn for all protein, RNA, DNA and oligosaccharide chains in the entry. The first graphic for a chain summarises the proportions of the various outlier classes displayed in the second graphic. The second graphic shows the sequence view annotated by issues in geometry and electron density. Residues are color-coded according to the number of geometric quality criteria for which they contain at least one outlier: green = 0, yellow = 1, orange = 2 and red = 3 or more. A red dot above a residue indicates a poor fit to the electron density ( $RSRZ > 2$ ). Stretches of 2 or more consecutive residues without any outlier are shown as a green connector. Residues present in the sample, but not in the model, are shown in grey.

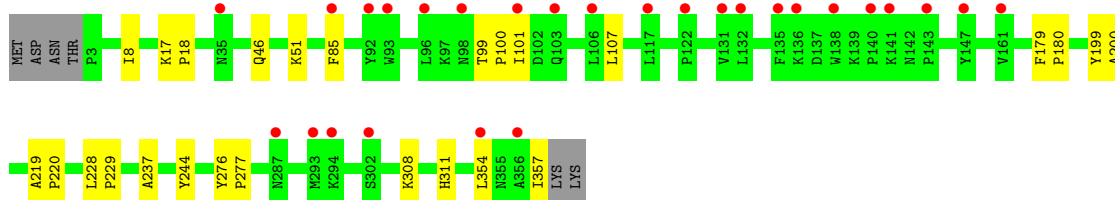
- Molecule 1: Beta-lactamase



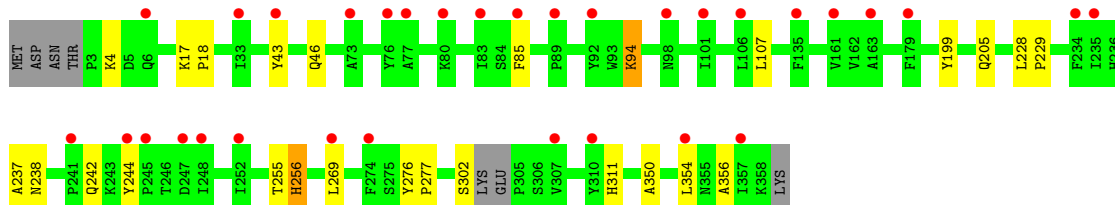
- Molecule 1: Beta-lactamase



- Molecule 1: Beta-lactamase



- Molecule 1: Beta-lactamase



## 4 Data and refinement statistics

Property	Value	Source
Space group	P 1 21 1	Depositor
Cell constants a, b, c, $\alpha$ , $\beta$ , $\gamma$	87.73Å 81.28Å 105.12Å 90.00° 112.99° 90.00°	Depositor
Resolution (Å)	96.77 – 1.67 96.77 – 1.67	Depositor EDS
% Data completeness (in resolution range)	69.9 (96.77-1.67) 69.9 (96.77-1.67)	Depositor EDS
$R_{merge}$	0.06	Depositor
$R_{sym}$	(Not available)	Depositor
$\langle I/\sigma(I) \rangle$ <sup>1</sup>	1.39 (at 1.67Å)	Xtriage
Refinement program	REFMAC 5.8.0253	Depositor
R, $R_{free}$	0.222 , 0.263 0.228 , 0.265	Depositor DCC
$R_{free}$ test set	5463 reflections (4.97%)	wwPDB-VP
Wilson B-factor (Å <sup>2</sup> )	27.8	Xtriage
Anisotropy	0.068	Xtriage
Bulk solvent $k_{sol}$ (e/Å <sup>3</sup> ), $B_{sol}$ (Å <sup>2</sup> )	0.33 , 41.8	EDS
L-test for twinning <sup>2</sup>	$\langle  L  \rangle = 0.50$ , $\langle L^2 \rangle = 0.34$	Xtriage
Estimated twinning fraction	0.010 for h,-k,-h-l	Xtriage
$F_o, F_c$ correlation	0.95	EDS
Total number of atoms	11791	wwPDB-VP
Average B, all atoms (Å <sup>2</sup> )	37.0	wwPDB-VP

Xtriage's analysis on translational NCS is as follows: *The analyses of the Patterson function reveals a significant off-origin peak that is 42.38 % of the origin peak, indicating pseudo-translational symmetry. The chance of finding a peak of this or larger height randomly in a structure without pseudo-translational symmetry is equal to 2.0563e-04. The detected translational NCS is most likely also responsible for the elevated intensity ratio.*

<sup>1</sup> Intensities estimated from amplitudes.

<sup>2</sup> Theoretical values of  $\langle |L| \rangle$ ,  $\langle L^2 \rangle$  for acentric reflections are 0.5, 0.333 respectively for untwinned datasets, and 0.375, 0.2 for perfectly twinned datasets.

## 5 Model quality [i](#)

### 5.1 Standard geometry [i](#)

Bond lengths and bond angles in the following residue types are not validated in this section: LP0

The Z score for a bond length (or angle) is the number of standard deviations the observed value is removed from the expected value. A bond length (or angle) with  $|Z| > 5$  is considered an outlier worth inspection. RMSZ is the root-mean-square of all Z scores of the bond lengths (or angles).

Mol	Chain	Bond lengths		Bond angles	
		RMSZ	# Z  >5	RMSZ	# Z  >5
1	A	0.65	0/2889	0.73	0/3924
1	B	0.65	0/2951	0.73	0/4004
1	C	0.64	0/2783	0.71	0/3798
1	D	0.64	0/2766	0.70	0/3774
All	All	0.65	0/11389	0.72	0/15500

There are no bond length outliers.

There are no bond angle outliers.

There are no chirality outliers.

There are no planarity outliers.

### 5.2 Too-close contacts [i](#)

In the following table, the Non-H and H(model) columns list the number of non-hydrogen atoms and hydrogen atoms in the chain respectively. The H(added) column lists the number of hydrogen atoms added and optimized by MolProbity. The Clashes column lists the number of clashes within the asymmetric unit, whereas Symm-Clashes lists symmetry related clashes.

Mol	Chain	Non-H	H(model)	H(added)	Clashes	Symm-Clashes
1	A	2822	0	2784	13	0
1	B	2876	0	2867	12	0
1	C	2714	0	2595	14	0
1	D	2699	0	2573	14	0
2	A	26	0	0	0	0
2	B	26	0	0	0	0
2	C	26	0	0	0	0
2	D	26	0	0	0	0
3	C	5	0	2	0	0

*Continued on next page...*



*Continued from previous page...*

Mol	Chain	Non-H	H(model)	H(added)	Clashes	Symm-Clashes
4	A	162	0	0	0	0
4	B	246	0	0	2	0
4	C	87	0	0	0	0
4	D	76	0	0	1	0
All	All	11791	0	10821	51	0

The all-atom clashscore is defined as the number of clashes found per 1000 atoms (including hydrogen atoms). The all-atom clashscore for this structure is 2.

All (51) close contacts within the same asymmetric unit are listed below, sorted by their clash magnitude.

Atom-1	Atom-2	Interatomic distance (Å)	Clash overlap (Å)
1:C:99:THR:HG23	1:C:100:PRO:HD2	1.63	0.81
1:B:303:LYS:HE2	4:B:632:HOH:O	1.89	0.71
1:D:238:ASN:OD1	1:D:256:HIS:HE1	1.75	0.69
1:D:255:THR:HA	1:D:269:LEU:HB2	1.78	0.65
1:C:354:LEU:O	1:C:357:ILE:HG22	1.97	0.64
1:B:208[A]:GLN:OE1	1:C:51:LYS:HA	2.03	0.58
1:D:350:ALA:O	1:D:354:LEU:HD12	2.06	0.56
1:B:303:LYS:CE	4:B:632:HOH:O	2.53	0.54
1:D:17:LYS:HE3	1:D:43:TYR:HE1	1.71	0.54
1:D:238:ASN:OD1	1:D:256:HIS:CE1	2.60	0.53
1:A:329:GLU:O	1:A:331:ILE:HG23	2.09	0.52
1:C:46:GLN:HG3	1:C:200:ALA:HA	1.91	0.51
1:A:79[B]:ASN:ND2	1:A:250[B]:ARG:HG3	2.27	0.50
1:A:79[B]:ASN:HD21	1:A:250[B]:ARG:HG3	1.77	0.50
1:A:241:PRO:O	1:A:249:GLN:HG2	2.12	0.48
1:D:94:LYS:HD3	1:D:94:LYS:N	2.30	0.46
1:C:8:ILE:HG12	1:C:357:ILE:CD1	2.45	0.46
1:D:205:GLN:NE2	4:D:506:HOH:O	2.49	0.46
1:B:273:GLU:OE2	1:B:308:LYS:HG2	2.17	0.45
1:A:243:LYS:HG3	1:B:123:ASP:OD2	2.17	0.45
1:C:99:THR:HG22	1:C:101:ILE:HG22	1.99	0.45
1:D:17:LYS:CE	1:D:43:TYR:HE1	2.29	0.45
1:A:331:ILE:HD12	1:A:354:LEU:HD22	1.99	0.44
1:B:85:PHE:HB3	1:B:107:LEU:HB2	2.00	0.44
1:D:17:LYS:HE3	1:D:43:TYR:CE1	2.50	0.44
1:C:99:THR:CG2	1:C:100:PRO:HD2	2.43	0.43
1:C:276:TYR:CD1	1:C:277:PRO:HA	2.53	0.43
1:D:276:TYR:CD1	1:D:277:PRO:HA	2.53	0.43
1:B:179:PHE:HB2	1:B:180:PRO:HD3	2.00	0.43

*Continued on next page...*

Continued from previous page...

Atom-1	Atom-2	Interatomic distance (Å)	Clash overlap (Å)
1:B:237:ALA:HA	1:B:244:TYR:CE1	2.54	0.43
1:D:85:PHE:HB3	1:D:107:LEU:HB2	1.99	0.43
1:A:245:PRO:HB2	1:A:247:ASP:OD1	2.19	0.43
1:A:34:GLN:HG3	1:A:331:ILE:HG22	2.00	0.43
1:A:85:PHE:HB3	1:A:107:LEU:HB2	2.00	0.42
1:C:228:LEU:HB3	1:C:229:PRO:HD3	2.02	0.42
1:C:85:PHE:HB3	1:C:107:LEU:HB2	2.00	0.42
1:B:244:TYR:HB3	1:B:248:ILE:CG2	2.50	0.41
1:A:250[B]:ARG:NE	1:A:250[B]:ARG:HA	2.35	0.41
1:A:87:ASP:OD2	1:A:92:TYR:OH	2.32	0.41
1:D:17:LYS:N	1:D:18:PRO:CD	2.83	0.41
1:C:17:LYS:N	1:C:18:PRO:CD	2.84	0.41
1:B:276:TYR:CD1	1:B:277:PRO:HA	2.55	0.41
1:A:244:TYR:O	1:A:249:GLN:NE2	2.36	0.41
1:B:17:LYS:N	1:B:18:PRO:CD	2.84	0.41
1:D:228:LEU:HB3	1:D:229:PRO:HD3	2.02	0.41
1:C:219:ALA:HB3	1:C:220:PRO:HD3	2.03	0.41
1:D:237:ALA:HA	1:D:244:TYR:CE1	2.56	0.41
1:C:179:PHE:HB2	1:C:180:PRO:HD3	2.03	0.40
1:C:237:ALA:HA	1:C:244:TYR:CE1	2.56	0.40
1:A:329:GLU:HB2	1:A:331:ILE:HG12	2.02	0.40
1:B:329:GLU:HB2	1:B:331:ILE:HG22	2.03	0.40

There are no symmetry-related clashes.

## 5.3 Torsion angles [i](#)

### 5.3.1 Protein backbone [i](#)

In the following table, the Percentiles column shows the percent Ramachandran outliers of the chain as a percentile score with respect to all X-ray entries followed by that with respect to entries of similar resolution.

The Analysed column shows the number of residues for which the backbone conformation was analysed, and the total number of residues.

Mol	Chain	Analysed	Favoured	Allowed	Outliers	Percentiles	
1	A	357/361 (99%)	347 (97%)	10 (3%)	0	100	100
1	B	361/361 (100%)	353 (98%)	8 (2%)	0	100	100
1	C	355/361 (98%)	348 (98%)	7 (2%)	0	100	100

Continued on next page...

*Continued from previous page...*

Mol	Chain	Analysed	Favoured	Allowed	Outliers	Percentiles
1	D	350/361 (97%)	339 (97%)	9 (3%)	2 (1%)	25 10
All	All	1423/1444 (98%)	1387 (98%)	34 (2%)	2 (0%)	51 32

All (2) Ramachandran outliers are listed below:

Mol	Chain	Res	Type
1	D	4	LYS
1	D	356	ALA

### 5.3.2 Protein sidechains ⓘ

In the following table, the Percentiles column shows the percent sidechain outliers of the chain as a percentile score with respect to all X-ray entries followed by that with respect to entries of similar resolution.

The Analysed column shows the number of residues for which the sidechain conformation was analysed, and the total number of residues.

Mol	Chain	Analysed	Rotameric	Outliers	Percentiles
1	A	306/319 (96%)	304 (99%)	2 (1%)	84 76
1	B	318/319 (100%)	311 (98%)	7 (2%)	52 32
1	C	283/319 (89%)	280 (99%)	3 (1%)	73 61
1	D	280/319 (88%)	273 (98%)	7 (2%)	47 26
All	All	1187/1276 (93%)	1168 (98%)	19 (2%)	65 46

All (19) residues with a non-rotameric sidechain are listed below:

Mol	Chain	Res	Type
1	A	199	TYR
1	A	311	HIS
1	B	41	MET
1	B	46	GLN
1	B	149	GLN
1	B	199	TYR
1	B	311	HIS
1	B	344[A]	GLU
1	B	344[B]	GLU
1	C	199	TYR
1	C	308	LYS
1	C	311	HIS

*Continued on next page...*

*Continued from previous page...*

Mol	Chain	Res	Type
1	D	46	GLN
1	D	94	LYS
1	D	199	TYR
1	D	242	GLN
1	D	256	HIS
1	D	302	SER
1	D	311	HIS

Some sidechains can be flipped to improve hydrogen bonding and reduce clashes. All (7) such sidechains are listed below:

Mol	Chain	Res	Type
1	B	14	GLN
1	B	249	GLN
1	C	130	GLN
1	C	172	GLN
1	C	253	ASN
1	D	256	HIS
1	D	257	GLN

### 5.3.3 RNA [i](#)

There are no RNA molecules in this entry.

## 5.4 Non-standard residues in protein, DNA, RNA chains [i](#)

There are no non-standard protein/DNA/RNA residues in this entry.

## 5.5 Carbohydrates [i](#)

There are no monosaccharides in this entry.

## 5.6 Ligand geometry [i](#)

5 ligands are modelled in this entry.

In the following table, the Counts columns list the number of bonds (or angles) for which Mogul statistics could be retrieved, the number of bonds (or angles) that are observed in the model and the number of bonds (or angles) that are defined in the Chemical Component Dictionary. The Link column lists molecule types, if any, to which the group is linked. The Z score for a bond

length (or angle) is the number of standard deviations the observed value is removed from the expected value. A bond length (or angle) with  $|Z| > 2$  is considered an outlier worth inspection. RMSZ is the root-mean-square of all Z scores of the bond lengths (or angles).

Mol	Type	Chain	Res	Link	Bond lengths			Bond angles		
					Counts	RMSZ	# Z  > 2	Counts	RMSZ	# Z  > 2
2	LP0	B	401	1	18,26,26	2.17	5 (27%)	18,38,38	4.44	6 (33%)
2	LP0	C	401	1	18,26,26	2.51	4 (22%)	18,38,38	4.12	4 (22%)
2	LP0	A	401	1	18,26,26	2.35	5 (27%)	18,38,38	3.86	3 (16%)
3	GLY	C	402	-	1,4,4	0.09	0	0,4,4	0.00	-
2	LP0	D	401	1	18,26,26	2.34	5 (27%)	18,38,38	4.27	3 (16%)

In the following table, the Chirals column lists the number of chiral outliers, the number of chiral centers analysed, the number of these observed in the model and the number defined in the Chemical Component Dictionary. Similar counts are reported in the Torsion and Rings columns. '-' means no outliers of that kind were identified.

Mol	Type	Chain	Res	Link	Chirals	Torsions	Rings
2	LP0	B	401	1	-	4/11/30/30	0/1/1/1
2	LP0	C	401	1	-	4/11/30/30	0/1/1/1
2	LP0	A	401	1	-	5/11/30/30	0/1/1/1
3	GLY	C	402	-	-	0/0/2/2	-
2	LP0	D	401	1	-	2/11/30/30	0/1/1/1

All (19) bond length outliers are listed below:

Mol	Chain	Res	Type	Atoms	Z	Observed(Å)	Ideal(Å)
2	C	401	LP0	O7-N6	-7.48	1.26	1.42
2	A	401	LP0	O7-N6	-7.11	1.27	1.42
2	D	401	LP0	O7-N6	-6.87	1.27	1.42
2	B	401	LP0	O7-N6	-6.31	1.29	1.42
2	C	401	LP0	P1-O20	4.64	1.61	1.56
2	A	401	LP0	B1-C1	3.81	1.61	1.56
2	A	401	LP0	P1-O20	3.79	1.60	1.56
2	D	401	LP0	C17-N19	3.73	1.46	1.35
2	D	401	LP0	B1-C1	3.61	1.61	1.56
2	B	401	LP0	C17-N19	3.53	1.45	1.35
2	C	401	LP0	C17-N19	3.50	1.45	1.35
2	C	401	LP0	B1-C1	3.36	1.61	1.56
2	B	401	LP0	B1-C1	3.17	1.61	1.56
2	D	401	LP0	P1-O20	2.93	1.59	1.56
2	A	401	LP0	C17-N19	2.59	1.42	1.35
2	B	401	LP0	C14-C5	2.49	1.51	1.48

*Continued on next page...*

*Continued from previous page...*

Mol	Chain	Res	Type	Atoms	Z	Observed(Å)	Ideal(Å)
2	B	401	LP0	C15-S16	2.42	1.74	1.70
2	A	401	LP0	C5-C3	-2.35	1.46	1.50
2	D	401	LP0	C15-S16	2.09	1.73	1.70

All (16) bond angle outliers are listed below:

Mol	Chain	Res	Type	Atoms	Z	Observed(°)	Ideal(°)
2	D	401	LP0	C8-O7-N6	17.27	125.66	110.33
2	B	401	LP0	C8-O7-N6	17.07	125.49	110.33
2	C	401	LP0	C8-O7-N6	14.91	123.57	110.33
2	A	401	LP0	C8-O7-N6	14.69	123.38	110.33
2	C	401	LP0	O7-N6-C5	5.78	120.84	111.87
2	A	401	LP0	O7-N6-C5	5.65	120.64	111.87
2	C	401	LP0	C5-C3-N2	5.33	122.14	115.58
2	B	401	LP0	O7-N6-C5	4.01	118.10	111.87
2	B	401	LP0	O4-C3-C5	-3.59	116.22	120.35
2	D	401	LP0	O7-N6-C5	3.56	117.41	111.87
2	B	401	LP0	C5-C3-N2	3.35	119.71	115.58
2	A	401	LP0	O4-C3-C5	-3.26	116.60	120.35
2	C	401	LP0	O4-C3-C5	-3.22	116.64	120.35
2	B	401	LP0	O5-P1-O20	2.91	118.82	109.52
2	D	401	LP0	C5-C3-N2	2.68	118.88	115.58
2	B	401	LP0	O2-P1-O20	-2.43	101.75	109.52

There are no chirality outliers.

All (15) torsion outliers are listed below:

Mol	Chain	Res	Type	Atoms
2	C	401	LP0	C10-C8-O7-N6
2	C	401	LP0	C9-C8-O7-N6
2	A	401	LP0	C5-N6-O7-C8
2	B	401	LP0	O4-C3-C5-N6
2	B	401	LP0	N2-C3-C5-N6
2	B	401	LP0	O4-C3-C5-C14
2	A	401	LP0	O4-C3-C5-C14
2	C	401	LP0	O4-C3-C5-N6
2	A	401	LP0	O4-C3-C5-N6
2	D	401	LP0	O4-C3-C5-N6
2	A	401	LP0	N2-C3-C5-N6
2	C	401	LP0	O4-C3-C5-C14
2	D	401	LP0	O4-C3-C5-C14
2	B	401	LP0	N2-C3-C5-C14

*Continued on next page...*

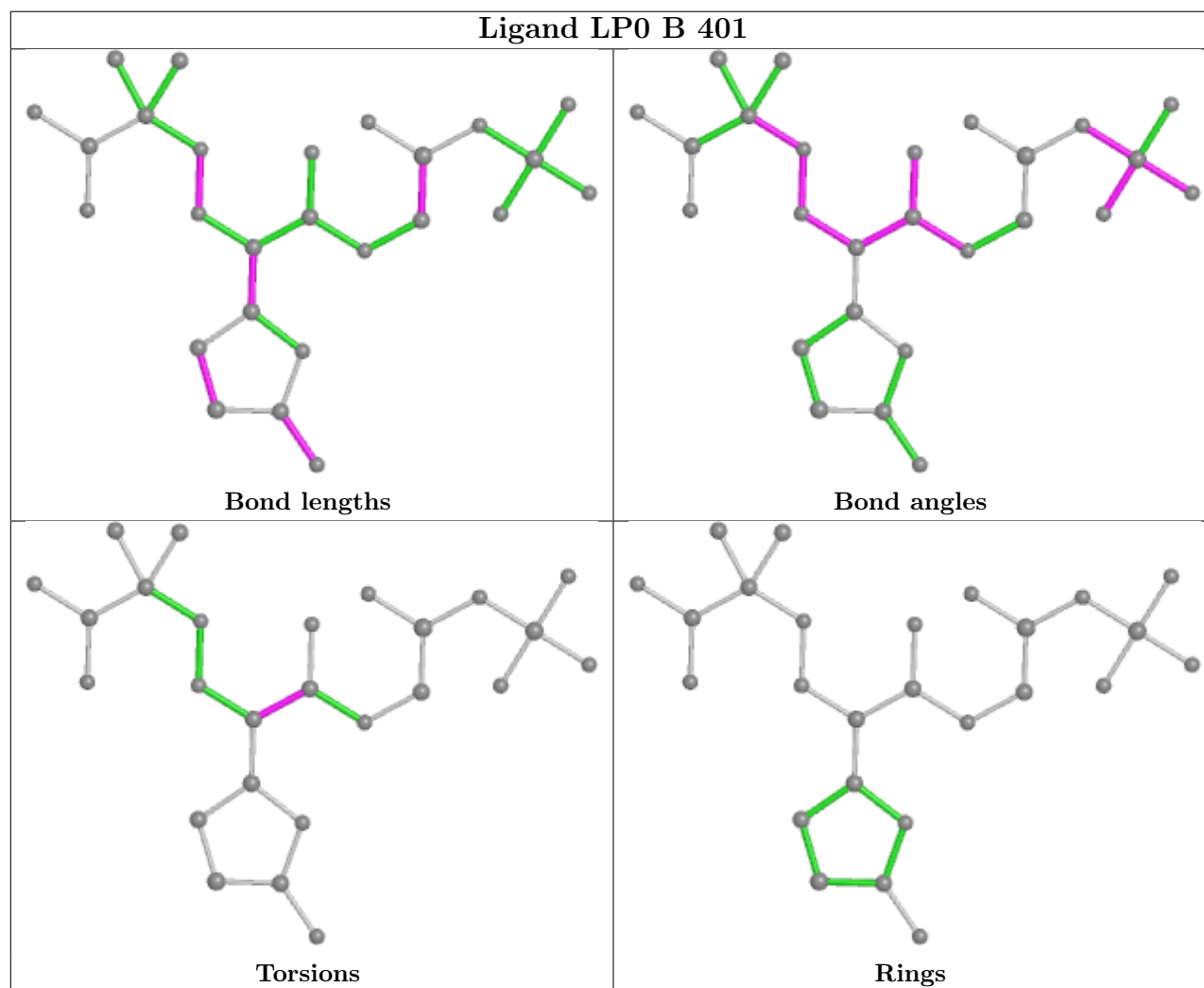
*Continued from previous page...*

Mol	Chain	Res	Type	Atoms
2	A	401	LP0	N2-C3-C5-C14

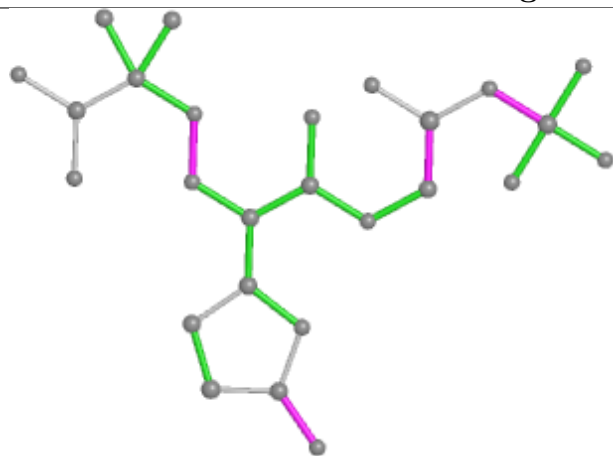
There are no ring outliers.

No monomer is involved in short contacts.

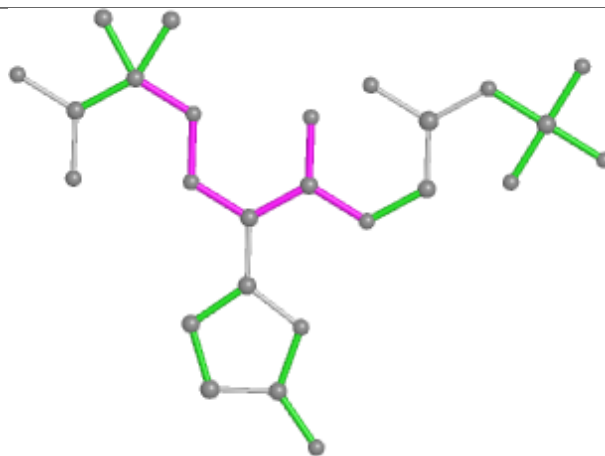
The following is a two-dimensional graphical depiction of Mogul quality analysis of bond lengths, bond angles, torsion angles, and ring geometry for all instances of the Ligand of Interest. In addition, ligands with molecular weight > 250 and outliers as shown on the validation Tables will also be included. For torsion angles, if less than 5% of the Mogul distribution of torsion angles is within 10 degrees of the torsion angle in question, then that torsion angle is considered an outlier. Any bond that is central to one or more torsion angles identified as an outlier by Mogul will be highlighted in the graph. For rings, the root-mean-square deviation (RMSD) between the ring in question and similar rings identified by Mogul is calculated over all ring torsion angles. If the average RMSD is greater than 60 degrees and the minimal RMSD between the ring in question and any Mogul-identified rings is also greater than 60 degrees, then that ring is considered an outlier. The outliers are highlighted in purple. The color gray indicates Mogul did not find sufficient equivalents in the CSD to analyse the geometry.



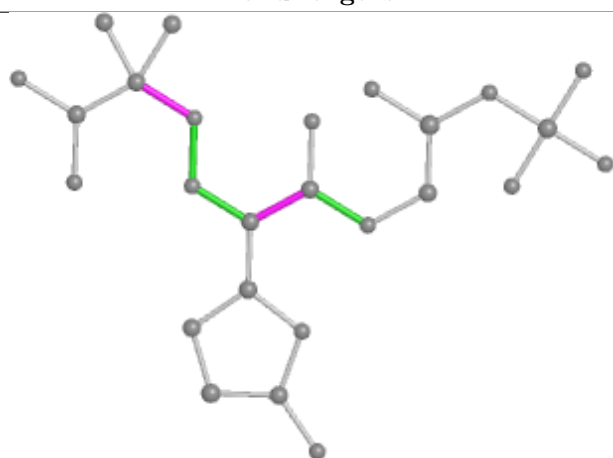
## Ligand LP0 C 401



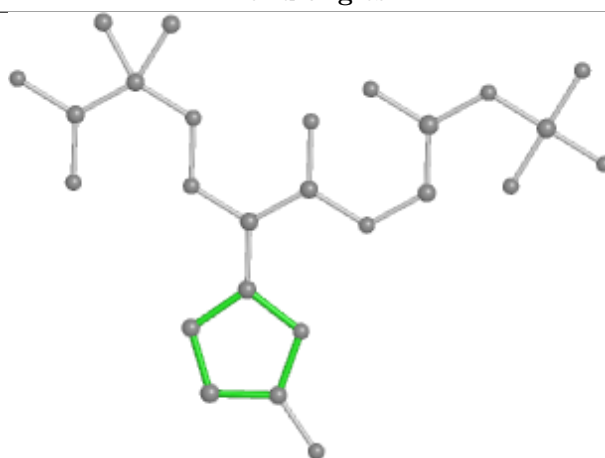
Bond lengths



Bond angles



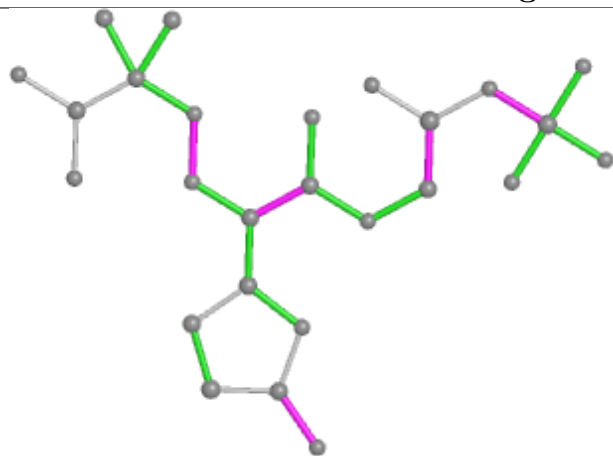
Torsions



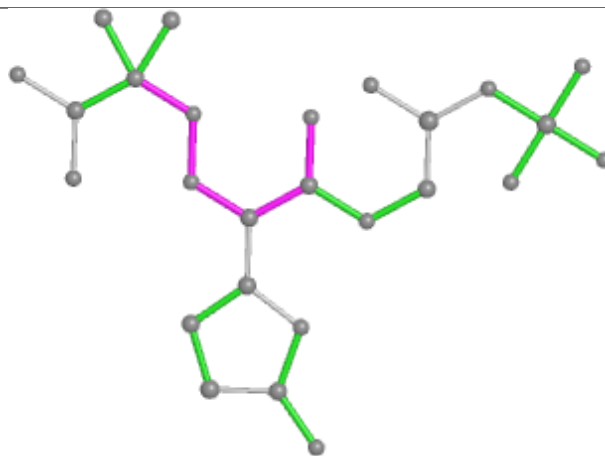
Rings



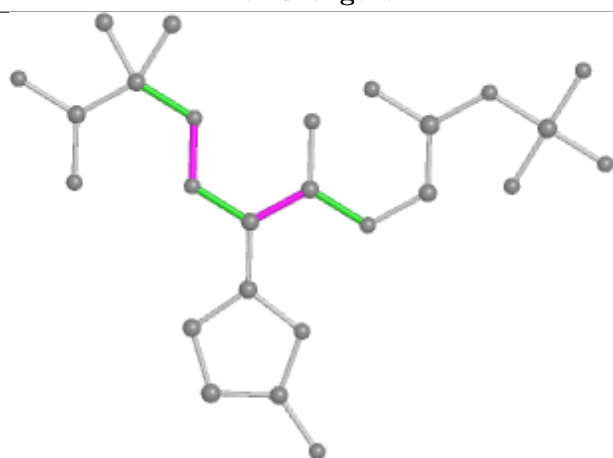
## Ligand LP0 A 401



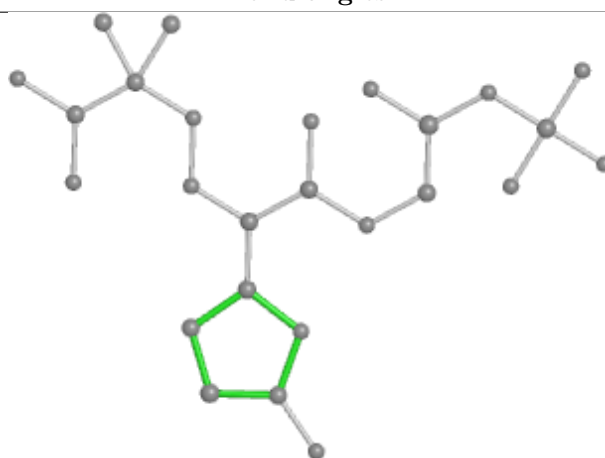
Bond lengths



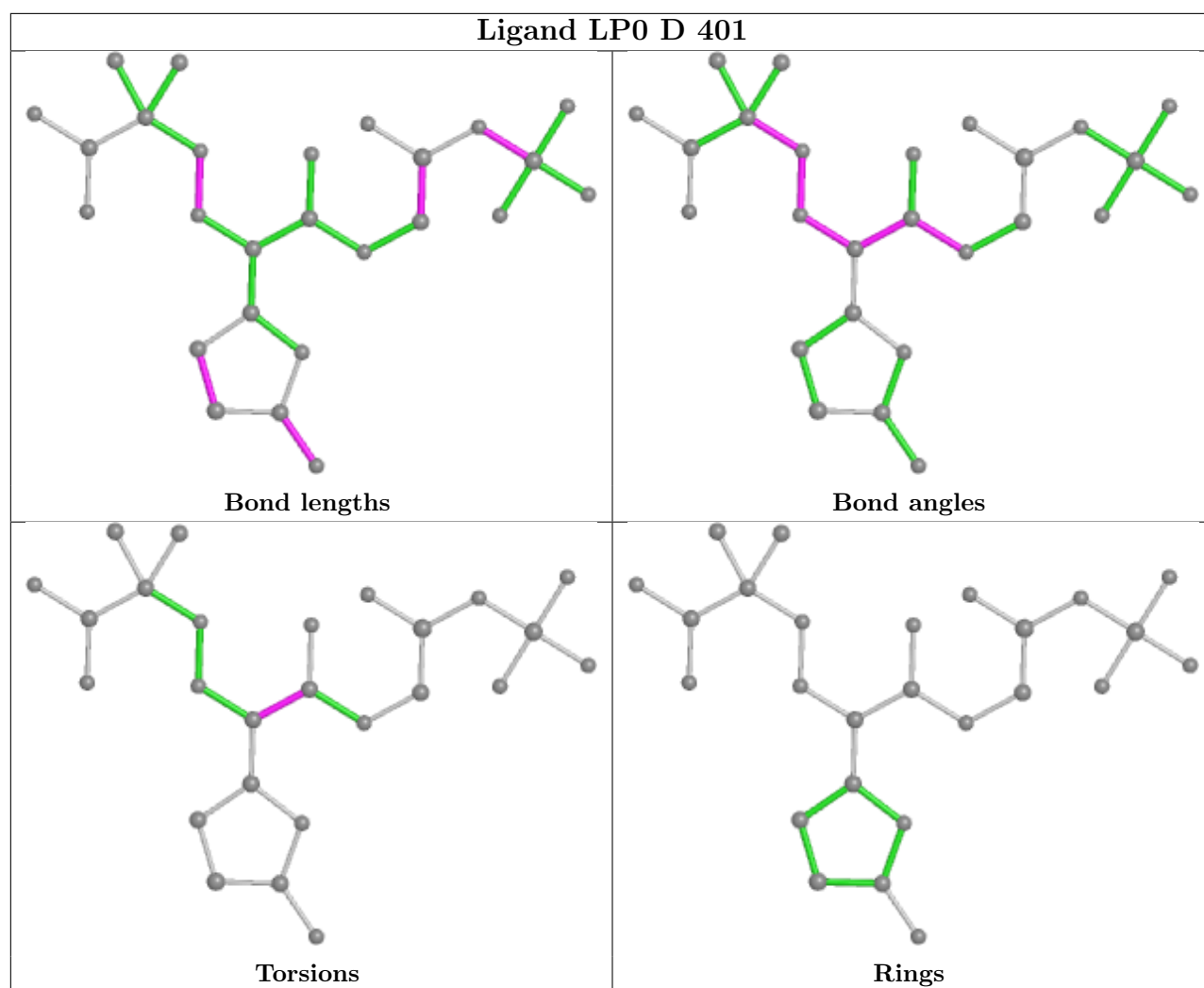
Bond angles



Torsions



Rings



## 5.7 Other polymers [i](#)

There are no such residues in this entry.

## 5.8 Polymer linkage issues [i](#)

There are no chain breaks in this entry.

## 6 Fit of model and data ⓘ

### 6.1 Protein, DNA and RNA chains ⓘ

In the following table, the column labelled ‘#RSRZ> 2’ contains the number (and percentage) of RSRZ outliers, followed by percent RSRZ outliers for the chain as percentile scores relative to all X-ray entries and entries of similar resolution. The OWAB column contains the minimum, median, 95<sup>th</sup> percentile and maximum values of the occupancy-weighted average B-factor per residue. The column labelled ‘Q< 0.9’ lists the number of (and percentage) of residues with an average occupancy less than 0.9.

Mol	Chain	Analysed	<RSRZ>	#RSRZ>2	OWAB(Å <sup>2</sup> )	Q<0.9
1	A	356/361 (98%)	0.06	2 (0%) 89 91	17, 29, 49, 65	0
1	B	358/361 (99%)	-0.17	0 100 100	14, 24, 42, 54	0
1	C	355/361 (98%)	0.53	27 (7%) 13 15	19, 45, 68, 81	0
1	D	354/361 (98%)	0.73	32 (9%) 9 9	25, 49, 69, 81	0
All	All	1423/1444 (98%)	0.29	61 (4%) 35 37	14, 35, 65, 81	0

All (61) RSRZ outliers are listed below:

Mol	Chain	Res	Type	RSRZ
1	D	248	ILE	11.1
1	D	245	PRO	5.3
1	C	135	PHE	4.7
1	D	163	ALA	4.5
1	D	76	TYR	4.2
1	C	101	ILE	4.1
1	C	147	TYR	4.1
1	D	85	PHE	4.0
1	C	131	VAL	3.9
1	C	161	VAL	3.7
1	A	359	LYS	3.6
1	C	302	SER	3.6
1	D	234	PHE	3.5
1	C	103	GLN	3.5
1	C	138	TRP	3.4
1	C	140	PRO	3.4
1	D	252	ILE	3.4
1	C	106	LEU	3.2
1	D	101	ILE	3.1
1	C	143	PRO	3.1
1	D	73	ALA	3.0

*Continued on next page...*

*Continued from previous page...*

Mol	Chain	Res	Type	RSRZ
1	C	92	TYR	3.0
1	D	357	ILE	2.9
1	C	93	TRP	2.9
1	C	287	ASN	2.9
1	D	247	ASP	2.8
1	C	35	ASN	2.8
1	D	161	VAL	2.7
1	D	80	LYS	2.7
1	D	135	PHE	2.7
1	D	77	ALA	2.7
1	D	241	PRO	2.6
1	D	269	LEU	2.5
1	D	33	ILE	2.5
1	C	136	LYS	2.4
1	C	122	PRO	2.4
1	D	89	PRO	2.4
1	D	274	PHE	2.3
1	C	96	LEU	2.3
1	C	98	ASN	2.3
1	D	354	LEU	2.3
1	D	83	ILE	2.3
1	A	131	VAL	2.2
1	D	6	GLN	2.2
1	D	307	VAL	2.2
1	C	117	LEU	2.2
1	C	132	LEU	2.2
1	C	85	PHE	2.2
1	D	106	LEU	2.2
1	D	244	TYR	2.2
1	D	43	TYR	2.1
1	C	354	LEU	2.1
1	D	235	ILE	2.1
1	C	294	LYS	2.1
1	D	98	ASN	2.1
1	C	141	LYS	2.1
1	D	310	TYR	2.1
1	C	293	MET	2.0
1	C	356	ALA	2.0
1	D	92	TYR	2.0
1	D	179	PHE	2.0

## 6.2 Non-standard residues in protein, DNA, RNA chains [i](#)

There are no non-standard protein/DNA/RNA residues in this entry.

## 6.3 Carbohydrates [i](#)

There are no monosaccharides in this entry.

## 6.4 Ligands [i](#)

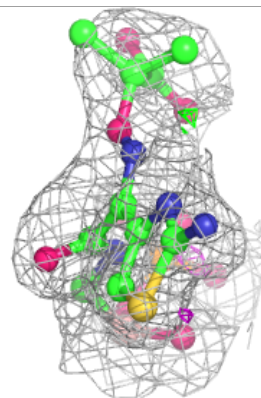
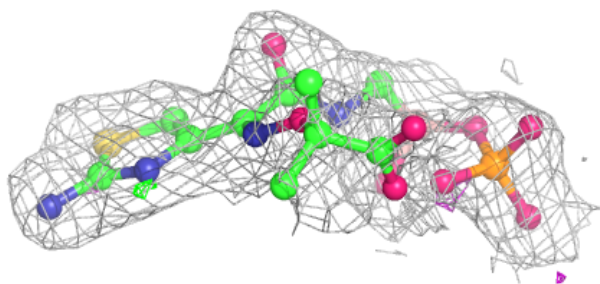
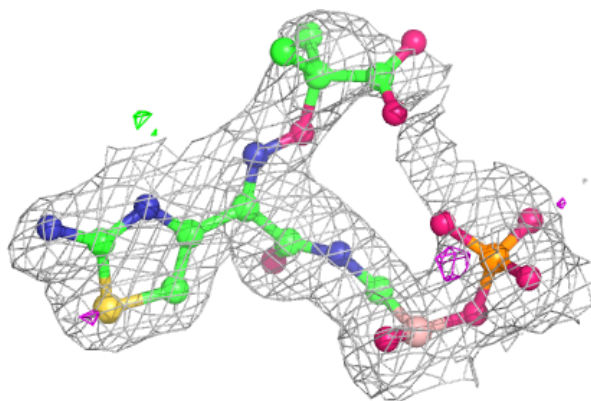
In the following table, the Atoms column lists the number of modelled atoms in the group and the number defined in the chemical component dictionary. The B-factors column lists the minimum, median, 95<sup>th</sup> percentile and maximum values of B factors of atoms in the group. The column labelled 'Q< 0.9' lists the number of atoms with occupancy less than 0.9.

Mol	Type	Chain	Res	Atoms	RSCC	RSR	B-factors( $\text{\AA}^2$ )	Q<0.9
3	GLY	C	402	5/5	0.82	0.13	49,52,64,66	0
2	LP0	C	401	26/26	0.91	0.10	33,47,83,90	0
2	LP0	D	401	26/26	0.91	0.15	40,51,105,120	0
2	LP0	B	401	26/26	0.92	0.17	22,39,82,88	0
2	LP0	A	401	26/26	0.93	0.17	26,45,98,109	0

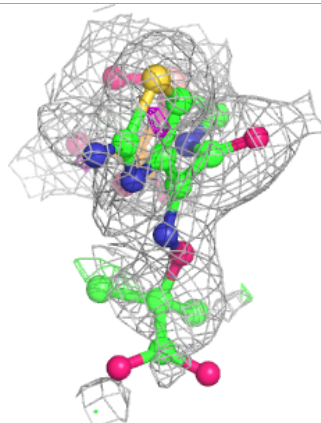
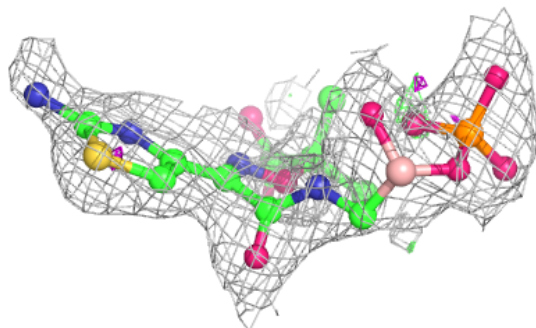
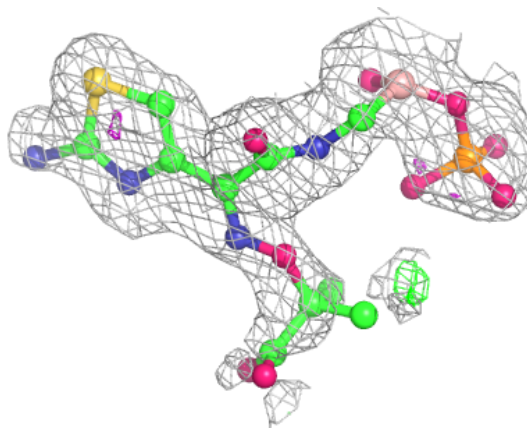
The following is a graphical depiction of the model fit to experimental electron density of all instances of the Ligand of Interest. In addition, ligands with molecular weight > 250 and outliers as shown on the geometry validation Tables will also be included. Each fit is shown from different orientation to approximate a three-dimensional view.

**Electron density around LP0 C 401:**

$2mF_o-DF_c$  (at 0.7 rmsd) in gray  
 $mF_o-DF_c$  (at 3 rmsd) in purple (negative)  
and green (positive)

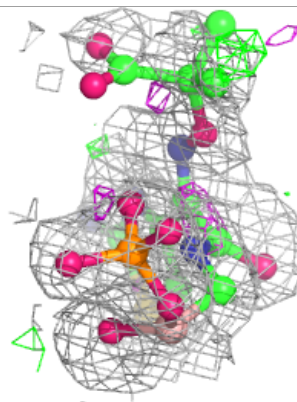
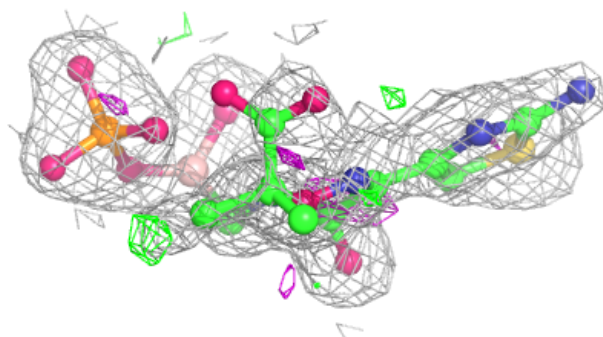
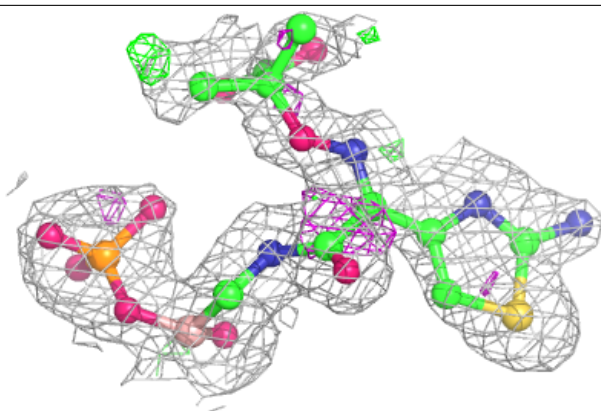
**Electron density around LP0 D 401:**

$2mF_o-DF_c$  (at 0.7 rmsd) in gray  
 $mF_o-DF_c$  (at 3 rmsd) in purple (negative)  
and green (positive)

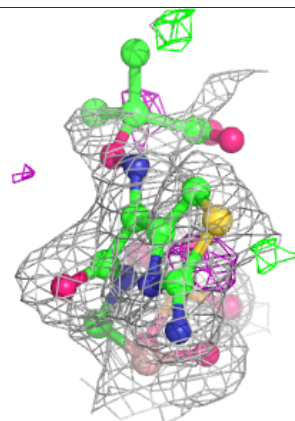
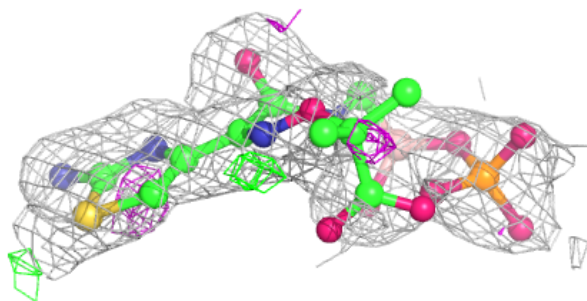
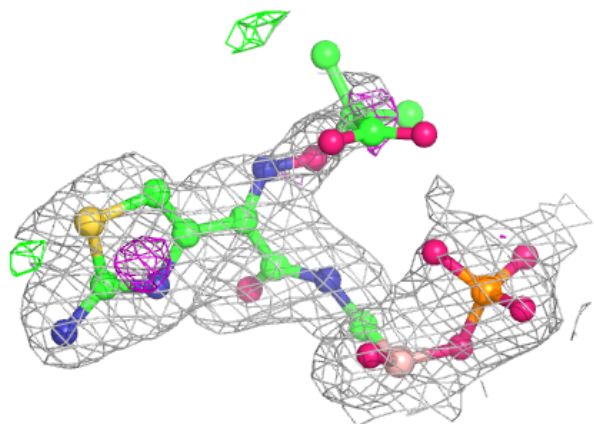


**Electron density around LP0 B 401:**

$2mF_o-DF_c$  (at 0.7 rmsd) in gray  
 $mF_o-DF_c$  (at 3 rmsd) in purple (negative)  
and green (positive)

**Electron density around LP0 A 401:**

$2mF_o-DF_c$  (at 0.7 rmsd) in gray  
 $mF_o-DF_c$  (at 3 rmsd) in purple (negative)  
and green (positive)



## 6.5 Other polymers [i](#)

There are no such residues in this entry.