



Full wwPDB X-ray Structure Validation Report ⓘ

May 22, 2020 – 01:34 am BST

PDB ID : 6PYC
Title : Structure of kappa-on-heavy (KoH) antibody Fab bound to the cardiac hormone marinobufagenin
Authors : Franklin, M.C.; Macdonald, L.E.; McWhirter, J.; Murphy, A.J.
Deposited on : 2019-07-29
Resolution : 3.60 Å(reported)

This is a Full wwPDB X-ray Structure Validation Report for a publicly released PDB entry.

We welcome your comments at validation@mail.wwpdb.org

A user guide is available at

<https://www.wwpdb.org/validation/2017/XrayValidationReportHelp>

with specific help available everywhere you see the ⓘ symbol.

The following versions of software and data (see [references ⓘ](#)) were used in the production of this report:

MolProbity : 4.02b-467
Mogul : 1.8.5 (274361), CSD as541be (2020)
Xtriage (Phenix) : 1.13
EDS : 2.11
buster-report : 1.1.7 (2018)
Percentile statistics : 20191225.v01 (using entries in the PDB archive December 25th 2019)
Refmac : 5.8.0158
CCP4 : 7.0.044 (Gargrove)
Ideal geometry (proteins) : Engh & Huber (2001)
Ideal geometry (DNA, RNA) : Parkinson et al. (1996)
Validation Pipeline (wwPDB-VP) : 2.11

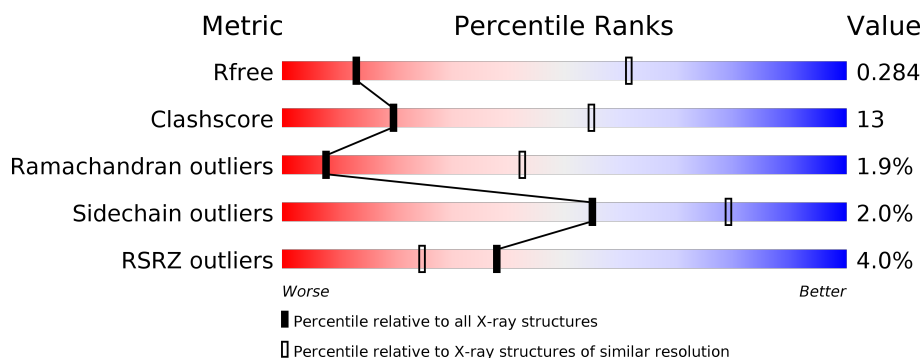
1 Overall quality at a glance i

The following experimental techniques were used to determine the structure:

X-RAY DIFFRACTION

The reported resolution of this entry is 3.60 Å.

Percentile scores (ranging between 0-100) for global validation metrics of the entry are shown in the following graphic. The table shows the number of entries on which the scores are based.



Metric	Whole archive (#Entries)	Similar resolution (#Entries, resolution range(Å))
R_{free}	130704	1257 (3.70-3.50)
Clashscore	141614	1353 (3.70-3.50)
Ramachandran outliers	138981	1307 (3.70-3.50)
Sidechain outliers	138945	1307 (3.70-3.50)
RSRZ outliers	127900	1161 (3.70-3.50)

The table below summarises the geometric issues observed across the polymeric chains and their fit to the electron density. The red, orange, yellow and green segments on the lower bar indicate the fraction of residues that contain outliers for ≥ 3 , 2, 1 and 0 types of geometric quality criteria respectively. A grey segment represents the fraction of residues that are not modelled. The numeric value for each fraction is indicated below the corresponding segment, with a dot representing fractions $\leq 5\%$. The upper red bar (where present) indicates the fraction of residues that have poor fit to the electron density. The numeric value is given above the bar.

Mol	Chain	Length	Quality of chain
1	H	214	<div> <div style="width: 100%; height: 10px; background-color: red;"></div> <div style="width: 78%; height: 10px; background-color: green;"></div> <div style="width: 15%; height: 10px; background-color: yellow;"></div> <div style="width: 5%; height: 10px; background-color: grey;"></div> </div>
2	L	215	<div style="width: 90%; height: 10px; background-color: green;"></div> <div style="width: 8%; height: 10px; background-color: yellow;"></div> <div style="width: 2%; height: 10px; background-color: grey;"></div>
3	A	223	<div style="width: 10%; height: 10px; background-color: red;"></div> <div style="width: 72%; height: 10px; background-color: green;"></div> <div style="width: 21%; height: 10px; background-color: yellow;"></div> <div style="width: 2%; height: 10px; background-color: grey;"></div>
4	B	214	<div style="width: 3%; height: 10px; background-color: red;"></div> <div style="width: 84%; height: 10px; background-color: green;"></div> <div style="width: 15%; height: 10px; background-color: yellow;"></div>

2 Entry composition

There are 6 unique types of molecules in this entry. The entry contains 6538 atoms, of which 0 are hydrogens and 0 are deuteriums.

In the tables below, the ZeroOcc column contains the number of atoms modelled with zero occupancy, the AltConf column contains the number of residues with at least one atom in alternate conformation and the Trace column contains the number of residues modelled with at most 2 atoms.

- Molecule 1 is a protein called KoH body Fab heavy chain.

Mol	Chain	Residues	Atoms					ZeroOcc	AltConf	Trace
1	H	204	Total	C	N	O	S	0	0	0
			1548	984	253	305	6			

- Molecule 2 is a protein called KoH body Fab light chain.

Mol	Chain	Residues	Atoms					ZeroOcc	AltConf	Trace
2	L	213	Total	C	N	O	S	0	0	0
			1644	1031	281	328	4			

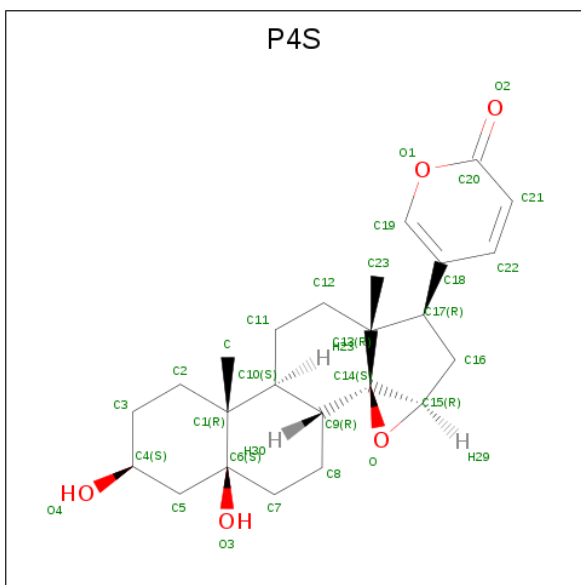
- Molecule 3 is a protein called anti-kappa antibody Fab heavy chain.

Mol	Chain	Residues	Atoms					ZeroOcc	AltConf	Trace
3	A	213	Total	C	N	O	S	0	0	0
			1614	1029	268	310	7			

- Molecule 4 is a protein called anti-kappa antibody Fab light chain.

Mol	Chain	Residues	Atoms					ZeroOcc	AltConf	Trace
4	B	213	Total	C	N	O	S	0	0	0
			1669	1051	276	335	7			

- Molecule 5 is (3beta,5beta,14alpha,15beta)-3,5-dihydroxy-14,15-epoxybufa-20,22-dienolide (three-letter code: P4S) (formula: C₂₄H₃₂O₅) (labeled as "Ligand of Interest" by author).



Mol	Chain	Residues	Atoms			ZeroOcc	AltConf
5	H	1	Total	C	O	0	0
			29	24	5		
5	L	1	Total	C	O	0	0
			29	24	5		

- Molecule 6 is SULFATE ION (three-letter code: SO4) (formula: O₄S).

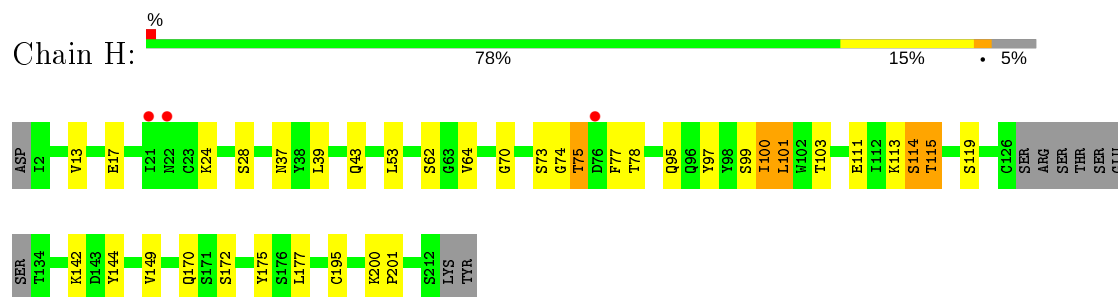


Mol	Chain	Residues	Atoms			ZeroOcc	AltConf
6	A	1	Total	O	S	0	0
			5	4	1		

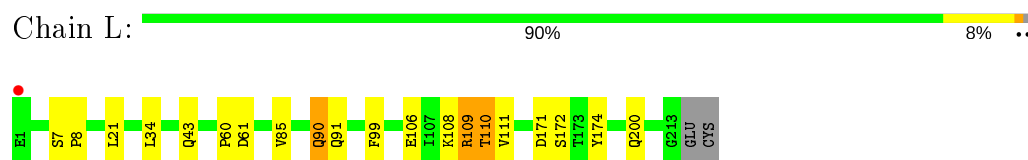
3 Residue-property plots [i](#)

These plots are drawn for all protein, RNA and DNA chains in the entry. The first graphic for a chain summarises the proportions of the various outlier classes displayed in the second graphic. The second graphic shows the sequence view annotated by issues in geometry and electron density. Residues are color-coded according to the number of geometric quality criteria for which they contain at least one outlier: green = 0, yellow = 1, orange = 2 and red = 3 or more. A red dot above a residue indicates a poor fit to the electron density ($RSRZ > 2$). Stretches of 2 or more consecutive residues without any outlier are shown as a green connector. Residues present in the sample, but not in the model, are shown in grey.

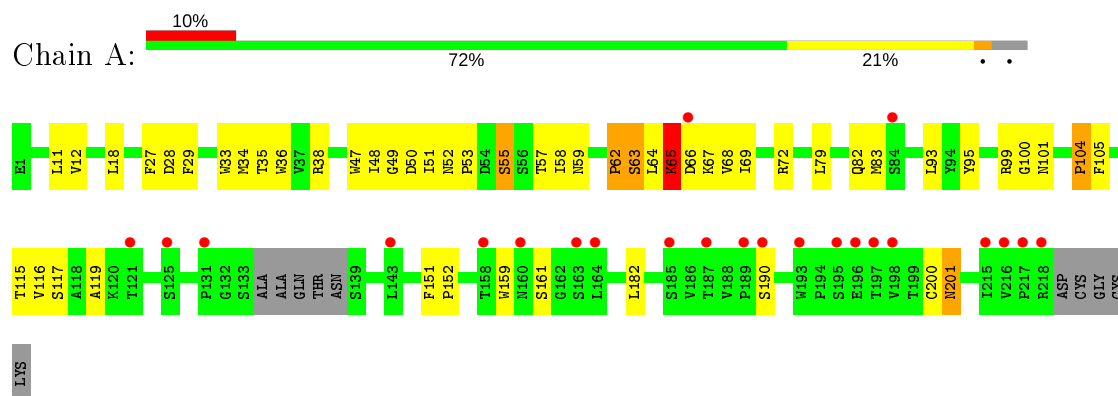
- Molecule 1: KoH body Fab heavy chain



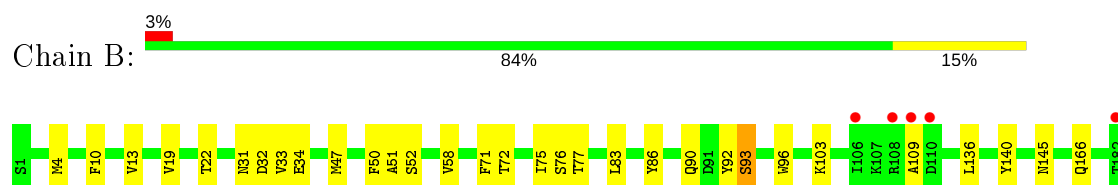
- Molecule 2: KoH body Fab light chain

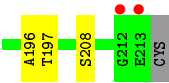


- Molecule 3: anti-kappa antibody Fab heavy chain



- Molecule 4: anti-kappa antibody Fab light chain





4 Data and refinement statistics

Property	Value	Source
Space group	I 4 2 2	Depositor
Cell constants a, b, c, α , β , γ	128.48 Å 128.48 Å 333.33 Å 90.00° 90.00° 90.00°	Depositor
Resolution (Å)	47.44 – 3.60 47.40 – 3.59	Depositor EDS
% Data completeness (in resolution range)	88.1 (47.44-3.60) 87.5 (47.40-3.59)	Depositor EDS
R_{merge}	0.30	Depositor
R_{sym}	(Not available)	Depositor
$\langle I/\sigma(I) \rangle$ ¹	2.54 (at 3.57 Å)	Xtriage
Refinement program	REFMAC 5.8.0253	Depositor
R, R_{free}	0.234 , 0.287 0.234 , 0.284	Depositor DCC
R_{free} test set	711 reflections (4.83%)	wwPDB-VP
Wilson B-factor (Å ²)	74.3	Xtriage
Anisotropy	0.345	Xtriage
Bulk solvent k_{sol} (e/Å ³), B_{sol} (Å ²)	0.30 , 50.7	EDS
L-test for twinning ²	$\langle L \rangle = 0.47$, $\langle L^2 \rangle = 0.30$	Xtriage
Estimated twinning fraction	No twinning to report.	Xtriage
F_o, F_c correlation	0.87	EDS
Total number of atoms	6538	wwPDB-VP
Average B, all atoms (Å ²)	100.0	wwPDB-VP

Xtriage's analysis on translational NCS is as follows: *The largest off-origin peak in the Patterson function is 2.94% of the height of the origin peak. No significant pseudotranslation is detected.*

¹Intensities estimated from amplitudes.

²Theoretical values of $\langle |L| \rangle$, $\langle L^2 \rangle$ for acentric reflections are 0.5, 0.333 respectively for untwinned datasets, and 0.375, 0.2 for perfectly twinned datasets.

5 Model quality [i](#)

5.1 Standard geometry [i](#)

Bond lengths and bond angles in the following residue types are not validated in this section: P4S, SO4

The Z score for a bond length (or angle) is the number of standard deviations the observed value is removed from the expected value. A bond length (or angle) with $|Z| > 5$ is considered an outlier worth inspection. RMSZ is the root-mean-square of all Z scores of the bond lengths (or angles).

Mol	Chain	Bond lengths		Bond angles	
		RMSZ	$\# Z > 5$	RMSZ	$\# Z > 5$
1	H	0.64	0/1585	0.75	0/2160
2	L	0.63	0/1680	0.77	0/2280
3	A	0.64	0/1657	0.74	0/2265
4	B	0.63	0/1710	0.71	0/2320
All	All	0.64	0/6632	0.74	0/9025

There are no bond length outliers.

There are no bond angle outliers.

There are no chirality outliers.

There are no planarity outliers.

5.2 Too-close contacts [i](#)

In the following table, the Non-H and H(model) columns list the number of non-hydrogen atoms and hydrogen atoms in the chain respectively. The H(added) column lists the number of hydrogen atoms added and optimized by MolProbity. The Clashes column lists the number of clashes within the asymmetric unit, whereas Symm-Clashes lists symmetry related clashes.

Mol	Chain	Non-H	H(model)	H(added)	Clashes	Symm-Clashes
1	H	1548	0	1522	26	0
2	L	1644	0	1605	17	0
3	A	1614	0	1603	102	0
4	B	1669	0	1595	28	0
5	H	29	0	0	1	0
5	L	29	0	0	1	0
6	A	5	0	0	1	0
All	All	6538	0	6325	163	0

The all-atom clashscore is defined as the number of clashes found per 1000 atoms (including

hydrogen atoms). The all-atom clashscore for this structure is 13.

All (163) close contacts within the same asymmetric unit are listed below, sorted by their clash magnitude.

Atom-1	Atom-2	Interatomic distance (Å)	Clash overlap (Å)
3:A:53:PRO:HA	3:A:72:ARG:NH1	1.50	1.23
3:A:53:PRO:HA	3:A:72:ARG:HH12	1.07	1.06
3:A:64:LEU:HD21	3:A:68:VAL:HG22	1.33	1.05
3:A:35:THR:HB	3:A:50:ASP:OD1	1.57	1.02
1:H:37:ASN:ND2	1:H:73:SER:OG	1.96	0.99
1:H:37:ASN:CG	1:H:73:SER:OG	2.04	0.96
1:H:37:ASN:OD1	1:H:73:SER:OG	1.88	0.90
3:A:47:TRP:CH2	3:A:59:ASN:OD1	2.24	0.89
3:A:35:THR:CB	3:A:50:ASP:OD1	2.22	0.87
3:A:36:TRP:NE1	3:A:79:LEU:CD2	2.39	0.85
3:A:36:TRP:NE1	3:A:79:LEU:HD21	1.91	0.85
3:A:47:TRP:CZ2	3:A:59:ASN:OD1	2.32	0.83
3:A:11:LEU:HD21	3:A:117:SER:O	1.80	0.82
3:A:33:TRP:CZ2	3:A:52:ASN:HB3	2.16	0.81
1:H:97:TYR:O	5:H:301:P4S:O4	2.01	0.79
1:H:37:ASN:CG	1:H:73:SER:HG	1.80	0.78
2:L:109:ARG:HH11	2:L:109:ARG:HG3	1.49	0.76
3:A:104:PRO:HG3	4:B:34:GLU:OE1	1.86	0.76
1:H:111:GLU:OE2	1:H:175:TYR:OH	2.04	0.76
3:A:64:LEU:CD2	3:A:68:VAL:HG22	2.15	0.74
3:A:11:LEU:HD11	3:A:117:SER:OG	1.87	0.74
3:A:50:ASP:OD2	4:B:96:TRP:HZ3	1.69	0.74
3:A:50:ASP:OD2	4:B:96:TRP:CZ3	2.42	0.73
2:L:109:ARG:HD2	2:L:172:SER:HB2	1.72	0.72
3:A:36:TRP:CE2	3:A:79:LEU:CD2	2.73	0.70
3:A:11:LEU:HA	3:A:115:THR:O	1.92	0.69
3:A:51:ILE:HG21	3:A:72:ARG:HD2	1.74	0.69
3:A:11:LEU:HA	3:A:115:THR:HG23	1.74	0.68
4:B:83:LEU:HD11	4:B:166:GLN:HB3	1.76	0.68
1:H:100:ILE:HG22	1:H:100:ILE:O	1.93	0.67
3:A:35:THR:HG22	3:A:50:ASP:CG	2.15	0.67
3:A:35:THR:CG2	3:A:50:ASP:OD1	2.42	0.66
3:A:57:THR:O	3:A:58:ILE:HG13	1.96	0.66
1:H:99:SER:O	1:H:101:LEU:N	2.29	0.65
3:A:64:LEU:HD23	3:A:64:LEU:C	2.19	0.63
1:H:73:SER:HA	1:H:77:PHE:CE2	2.34	0.63
2:L:109:ARG:O	2:L:109:ARG:HG3	1.97	0.63
4:B:92:TYR:O	4:B:93:SER:HB3	1.98	0.63

Continued on next page...

Continued from previous page...

Atom-1	Atom-2	Interatomic distance (Å)	Clash overlap (Å)
3:A:104:PRO:HG3	4:B:34:GLU:CD	2.20	0.62
1:H:114:SER:O	1:H:115:THR:OG1	2.16	0.62
2:L:109:ARG:NE	2:L:171:ASP:O	2.32	0.62
3:A:62:PRO:O	3:A:64:LEU:N	2.33	0.61
3:A:53:PRO:CA	3:A:72:ARG:NH1	2.44	0.60
3:A:11:LEU:HD11	3:A:117:SER:N	2.16	0.60
4:B:13:VAL:HG21	4:B:19:VAL:HG12	1.82	0.60
3:A:11:LEU:CD1	3:A:117:SER:OG	2.49	0.59
3:A:36:TRP:HE1	3:A:79:LEU:CD2	2.15	0.59
3:A:64:LEU:HD21	3:A:68:VAL:CG2	2.21	0.59
4:B:33:VAL:HG11	4:B:71:PHE:CG	2.37	0.59
2:L:200:GLN:NE2	4:B:92:TYR:HA	2.17	0.59
3:A:11:LEU:CD1	3:A:115:THR:HG23	2.32	0.59
3:A:64:LEU:HD11	3:A:68:VAL:CG1	2.34	0.58
3:A:52:ASN:CG	3:A:57:THR:HB	2.24	0.57
1:H:142:LYS:NZ	1:H:170:GLN:OE1	2.25	0.56
3:A:35:THR:HG22	3:A:50:ASP:OD1	2.05	0.56
1:H:95:GLN:NE2	5:L:301:P4S:O3	2.39	0.56
3:A:33:TRP:CE2	3:A:52:ASN:CB	2.89	0.55
2:L:106:GLU:OE1	2:L:174:TYR:OH	2.24	0.55
4:B:50:PHE:O	4:B:52:SER:N	2.39	0.55
3:A:115:THR:HG21	3:A:152:PRO:CB	2.37	0.55
1:H:13:VAL:HG12	1:H:17:GLU:HB2	1.90	0.54
3:A:36:TRP:HE1	3:A:79:LEU:HD21	1.71	0.53
4:B:22:THR:HG22	4:B:72:THR:HG22	1.91	0.53
3:A:47:TRP:CH2	3:A:59:ASN:O	2.62	0.53
2:L:108:LYS:HE2	4:B:31:ASN:HB2	1.91	0.53
4:B:76:SER:O	4:B:77:THR:OG1	2.23	0.53
3:A:33:TRP:HA	3:A:51:ILE:O	2.09	0.53
3:A:64:LEU:O	3:A:66:ASP:N	2.42	0.52
3:A:33:TRP:CD2	3:A:52:ASN:HA	2.44	0.52
4:B:109:ALA:O	4:B:140:TYR:CD1	2.62	0.52
3:A:33:TRP:CD1	3:A:53:PRO:HD3	2.44	0.52
4:B:33:VAL:HG11	4:B:71:PHE:CD2	2.44	0.52
3:A:33:TRP:CG	3:A:52:ASN:HA	2.45	0.52
1:H:70:GLY:HA2	1:H:78:THR:O	2.10	0.52
3:A:34:MET:CB	3:A:79:LEU:CD1	2.88	0.51
3:A:35:THR:HG21	3:A:105:PHE:HE1	1.76	0.51
4:B:145:ASN:HB3	4:B:197:THR:HB	1.93	0.51
2:L:21:LEU:HD12	2:L:21:LEU:N	2.25	0.51
2:L:90:GLN:HG3	2:L:99:PHE:CZ	2.45	0.51

Continued on next page...

Continued from previous page...

Atom-1	Atom-2	Interatomic distance (Å)	Clash overlap (Å)
3:A:53:PRO:CA	3:A:72:ARG:HH12	1.99	0.51
1:H:39:LEU:HD13	1:H:77:PHE:CD1	2.46	0.51
2:L:109:ARG:CD	2:L:171:ASP:O	2.59	0.51
3:A:104:PRO:CG	4:B:34:GLU:OE1	2.55	0.51
1:H:177:LEU:C	1:H:177:LEU:HD12	2.32	0.50
3:A:34:MET:HB3	3:A:79:LEU:CD1	2.41	0.50
3:A:93:LEU:HD11	3:A:95:TYR:CZ	2.46	0.50
3:A:35:THR:CG2	3:A:50:ASP:CG	2.80	0.50
3:A:11:LEU:HD11	3:A:117:SER:CA	2.42	0.50
3:A:33:TRP:CE2	3:A:52:ASN:HB3	2.47	0.49
3:A:182:LEU:HD12	3:A:182:LEU:C	2.33	0.49
3:A:51:ILE:CD1	3:A:55:SER:HA	2.43	0.49
3:A:52:ASN:ND2	3:A:57:THR:OG1	2.45	0.49
3:A:64:LEU:O	3:A:67:LYS:N	2.46	0.49
1:H:39:LEU:HD13	1:H:77:PHE:CG	2.48	0.49
3:A:11:LEU:CA	3:A:115:THR:HG23	2.42	0.48
3:A:36:TRP:NE1	3:A:79:LEU:HD23	2.28	0.48
2:L:109:ARG:CD	2:L:172:SER:HB2	2.41	0.47
3:A:11:LEU:HD11	3:A:117:SER:H	1.78	0.47
3:A:64:LEU:HD11	3:A:68:VAL:HG11	1.97	0.47
2:L:90:GLN:HG3	2:L:99:PHE:CE2	2.50	0.47
3:A:51:ILE:HD11	3:A:55:SER:HA	1.97	0.47
3:A:12:VAL:O	3:A:116:VAL:HA	2.13	0.47
2:L:90:GLN:OE1	2:L:91:GLN:N	2.48	0.47
2:L:110:THR:HG21	3:A:100:GLY:O	2.13	0.47
3:A:62:PRO:HA	3:A:65:LYS:HE3	1.96	0.47
3:A:33:TRP:O	3:A:99:ARG:HB3	2.13	0.47
3:A:36:TRP:CZ2	3:A:79:LEU:HD23	2.50	0.47
1:H:114:SER:C	1:H:115:THR:HG1	2.18	0.46
4:B:47:MET:HA	4:B:58:VAL:HG21	1.98	0.46
3:A:34:MET:HB2	3:A:79:LEU:HD12	1.96	0.46
3:A:48:ILE:HG23	3:A:64:LEU:HD13	1.98	0.46
3:A:11:LEU:HD12	3:A:115:THR:HG23	1.96	0.46
3:A:99:ARG:O	3:A:104:PRO:O	2.32	0.46
3:A:36:TRP:CZ2	3:A:79:LEU:CD2	2.98	0.46
3:A:62:PRO:O	3:A:65:LYS:HB2	2.16	0.46
3:A:104:PRO:CB	4:B:34:GLU:OE1	2.64	0.46
2:L:109:ARG:HB2	3:A:101:ASN:O	2.15	0.46
3:A:34:MET:HB2	3:A:79:LEU:CD1	2.46	0.45
3:A:161:SER:H	3:A:201:ASN:HD21	1.65	0.45
3:A:11:LEU:HA	3:A:115:THR:CG2	2.43	0.45

Continued on next page...

Continued from previous page...

Atom-1	Atom-2	Interatomic distance (Å)	Clash overlap (Å)
3:A:18:LEU:HB3	3:A:83:MET:HE3	1.99	0.45
4:B:10:PHE:CD1	4:B:103:LYS:HB3	2.51	0.45
3:A:159:TRP:CZ3	3:A:200:CYS:HB3	2.51	0.44
1:H:43:GLN:HB2	1:H:53:LEU:HD11	2.00	0.44
3:A:62:PRO:O	3:A:63:SER:C	2.55	0.44
4:B:136:LEU:HD21	4:B:196:ALA:HB2	1.99	0.44
3:A:33:TRP:CE2	3:A:52:ASN:HA	2.53	0.43
3:A:62:PRO:O	3:A:65:LYS:N	2.51	0.43
3:A:11:LEU:CD2	3:A:117:SER:O	2.61	0.43
3:A:47:TRP:CZ2	3:A:59:ASN:O	2.72	0.43
3:A:49:GLY:HA2	3:A:59:ASN:O	2.18	0.43
3:A:36:TRP:CE2	3:A:79:LEU:HD23	2.53	0.43
4:B:47:MET:HE1	4:B:86:TYR:HE2	1.83	0.43
3:A:34:MET:HB3	3:A:79:LEU:HD13	2.00	0.43
3:A:38:ARG:HB3	3:A:48:ILE:HD11	2.00	0.43
1:H:13:VAL:CG1	1:H:17:GLU:HB2	2.48	0.43
1:H:53:LEU:HA	1:H:64:VAL:HG21	1.99	0.43
3:A:33:TRP:CZ2	3:A:52:ASN:CB	2.93	0.43
1:H:101:LEU:O	1:H:103:THR:HG23	2.19	0.43
3:A:119:ALA:HB3	3:A:151:PHE:CE2	2.53	0.43
4:B:31:ASN:O	4:B:33:VAL:N	2.48	0.42
3:A:11:LEU:HD12	3:A:115:THR:O	2.20	0.42
3:A:11:LEU:HD11	3:A:117:SER:O	2.20	0.42
3:A:34:MET:CB	3:A:79:LEU:HD12	2.50	0.41
4:B:19:VAL:HG22	4:B:75:ILE:HB	2.02	0.41
3:A:47:TRP:CH2	3:A:59:ASN:CG	2.93	0.41
1:H:200:LYS:N	1:H:201:PRO:CD	2.82	0.41
3:A:52:ASN:OD1	3:A:52:ASN:C	2.59	0.41
4:B:33:VAL:C	4:B:34:GLU:HG3	2.41	0.41
4:B:50:PHE:C	4:B:52:SER:H	2.24	0.41
3:A:101:ASN:N	6:A:301:SO4:O1	2.53	0.41
3:A:51:ILE:HG23	3:A:52:ASN:O	2.20	0.41
1:H:28:SER:HA	1:H:74:GLY:O	2.21	0.41
2:L:34:LEU:HD13	2:L:34:LEU:C	2.41	0.41
3:A:33:TRP:CD1	3:A:52:ASN:HA	2.55	0.41
3:A:69:ILE:HB	3:A:82:GLN:HB3	2.03	0.41
1:H:24:LYS:HA	1:H:75:THR:O	2.20	0.41
4:B:4:MET:HE3	4:B:90:GLN:HB3	2.02	0.41
2:L:7:SER:HA	2:L:8:PRO:HA	1.91	0.40
1:H:144:TYR:CE2	1:H:149:VAL:HG23	2.56	0.40
3:A:27:PHE:O	3:A:29:PHE:N	2.54	0.40

Continued on next page...

Continued from previous page...

Atom-1	Atom-2	Interatomic distance (Å)	Clash overlap (Å)
3:A:62:PRO:HA	3:A:65:LYS:CE	2.52	0.40
4:B:33:VAL:C	4:B:34:GLU:CG	2.90	0.40

There are no symmetry-related clashes.

5.3 Torsion angles [i](#)

5.3.1 Protein backbone [i](#)

In the following table, the Percentiles column shows the percent Ramachandran outliers of the chain as a percentile score with respect to all X-ray entries followed by that with respect to entries of similar resolution.

The Analysed column shows the number of residues for which the backbone conformation was analysed, and the total number of residues.

Mol	Chain	Analysed	Favoured	Allowed	Outliers	Percentiles	
1	H	200/214 (94%)	184 (92%)	12 (6%)	4 (2%)	7	41
2	L	211/215 (98%)	200 (95%)	8 (4%)	3 (1%)	11	48
3	A	209/223 (94%)	190 (91%)	13 (6%)	6 (3%)	4	33
4	B	211/214 (99%)	197 (93%)	11 (5%)	3 (1%)	11	48
All	All	831/866 (96%)	771 (93%)	44 (5%)	16 (2%)	8	42

All (16) Ramachandran outliers are listed below:

Mol	Chain	Res	Type
1	H	100	ILE
1	H	115	THR
3	A	28	ASP
3	A	63	SER
3	A	65	LYS
3	A	104	PRO
4	B	32	ASP
4	B	93	SER
2	L	61	ASP
3	A	55	SER
4	B	51	ALA
1	H	114	SER
2	L	85	VAL

Continued on next page...

Continued from previous page...

Mol	Chain	Res	Type
1	H	101	LEU
2	L	110	THR
3	A	62	PRO

5.3.2 Protein sidechains ⓘ

In the following table, the Percentiles column shows the percent sidechain outliers of the chain as a percentile score with respect to all X-ray entries followed by that with respect to entries of similar resolution.

The Analysed column shows the number of residues for which the sidechain conformation was analysed, and the total number of residues.

Mol	Chain	Analysed	Rotameric	Outliers	Percentiles	
1	H	178/188 (95%)	172 (97%)	6 (3%)	37	69
2	L	185/187 (99%)	180 (97%)	5 (3%)	44	73
3	A	185/192 (96%)	182 (98%)	3 (2%)	62	83
4	B	189/190 (100%)	188 (100%)	1 (0%)	88	95
All	All	737/757 (97%)	722 (98%)	15 (2%)	55	79

All (15) residues with a non-rotameric sidechain are listed below:

Mol	Chain	Res	Type
1	H	62	SER
1	H	75	THR
1	H	113	LYS
1	H	119	SER
1	H	172	SER
1	H	195	CYS
2	L	43	GLN
2	L	60	PRO
2	L	90	GLN
2	L	109	ARG
2	L	111	VAL
3	A	65	LYS
3	A	190	SER
3	A	201	ASN
4	B	208	SER

Some sidechains can be flipped to improve hydrogen bonding and reduce clashes. All (12) such sidechains are listed below:

Mol	Chain	Res	Type
1	H	27	GLN
1	H	48	GLN
1	H	85	GLN
2	L	38	GLN
2	L	200	GLN
3	A	52	ASN
3	A	201	ASN
3	A	204	HIS
4	B	27	GLN
4	B	161	ASN
4	B	198	HIS
4	B	210	ASN

5.3.3 RNA [i](#)

There are no RNA molecules in this entry.

5.4 Non-standard residues in protein, DNA, RNA chains [i](#)

There are no non-standard protein/DNA/RNA residues in this entry.

5.5 Carbohydrates [i](#)

There are no carbohydrates in this entry.

5.6 Ligand geometry [i](#)

3 ligands are modelled in this entry.

In the following table, the Counts columns list the number of bonds (or angles) for which Mogul statistics could be retrieved, the number of bonds (or angles) that are observed in the model and the number of bonds (or angles) that are defined in the Chemical Component Dictionary. The Link column lists molecule types, if any, to which the group is linked. The Z score for a bond length (or angle) is the number of standard deviations the observed value is removed from the expected value. A bond length (or angle) with $|Z| > 2$ is considered an outlier worth inspection. RMSZ is the root-mean-square of all Z scores of the bond lengths (or angles).

Mol	Type	Chain	Res	Link	Bond lengths			Bond angles		
					Counts	RMSZ	# Z > 2	Counts	RMSZ	# Z > 2
5	P4S	L	301	-	30,34,34	1.00	2 (6%)	47,58,58	2.58	10 (21%)
6	SO4	A	301	-	4,4,4	0.39	0	6,6,6	0.06	0
5	P4S	H	301	-	30,34,34	1.06	2 (6%)	47,58,58	2.62	15 (31%)

In the following table, the Chirals column lists the number of chiral outliers, the number of chiral centers analysed, the number of these observed in the model and the number defined in the Chemical Component Dictionary. Similar counts are reported in the Torsion and Rings columns. '-' means no outliers of that kind were identified.

Mol	Type	Chain	Res	Link	Chirals	Torsions	Rings
5	P4S	L	301	-	-	0/4/79/79	0/6/6/6
5	P4S	H	301	-	-	0/4/79/79	0/6/6/6

All (4) bond length outliers are listed below:

Mol	Chain	Res	Type	Atoms	Z	Observed(Å)	Ideal(Å)
5	H	301	P4S	C14-C15	3.40	1.52	1.47
5	H	301	P4S	C13-C17	-3.06	1.54	1.58
5	L	301	P4S	C14-C15	2.86	1.51	1.47
5	L	301	P4S	C13-C17	-2.57	1.55	1.58

All (25) bond angle outliers are listed below:

Mol	Chain	Res	Type	Atoms	Z	Observed(°)	Ideal(°)
5	L	301	P4S	C16-C17-C13	12.69	109.22	102.62
5	H	301	P4S	C16-C17-C13	8.43	107.00	102.62
5	H	301	P4S	O-C14-C9	-8.00	107.54	116.70
5	L	301	P4S	O-C14-C9	-6.89	108.81	116.70
5	H	301	P4S	C7-C6-C5	-5.62	105.50	111.18
5	H	301	P4S	O-C14-C13	5.03	115.60	112.10
5	H	301	P4S	C16-C15-C14	-5.00	106.94	110.17
5	H	301	P4S	C14-O-C15	3.88	64.02	60.77
5	L	301	P4S	C14-O-C15	3.68	63.86	60.77
5	H	301	P4S	C8-C7-C6	3.18	116.73	112.76
5	L	301	P4S	C11-C10-C9	-3.00	106.34	110.84
5	L	301	P4S	C16-C15-C14	-2.95	108.27	110.17
5	H	301	P4S	O-C15-C16	2.79	116.97	112.08
5	L	301	P4S	C8-C9-C14	2.58	114.64	112.90
5	H	301	P4S	C-C1-C6	-2.49	108.03	110.17
5	L	301	P4S	C7-C6-C5	-2.39	108.77	111.18
5	H	301	P4S	C14-C13-C17	2.35	107.61	102.88
5	H	301	P4S	C11-C10-C9	-2.33	107.34	110.84
5	H	301	P4S	C23-C13-C14	-2.29	106.98	112.18
5	L	301	P4S	C2-C3-C4	2.28	113.40	110.47
5	H	301	P4S	C17-C16-C15	2.18	108.87	103.65
5	L	301	P4S	C-C1-C2	-2.13	104.20	107.84
5	L	301	P4S	O3-C6-C5	-2.11	103.98	108.32
5	H	301	P4S	C7-C8-C9	2.05	116.66	113.11
5	H	301	P4S	C13-C17-C18	-2.01	114.52	118.39

There are no chirality outliers.

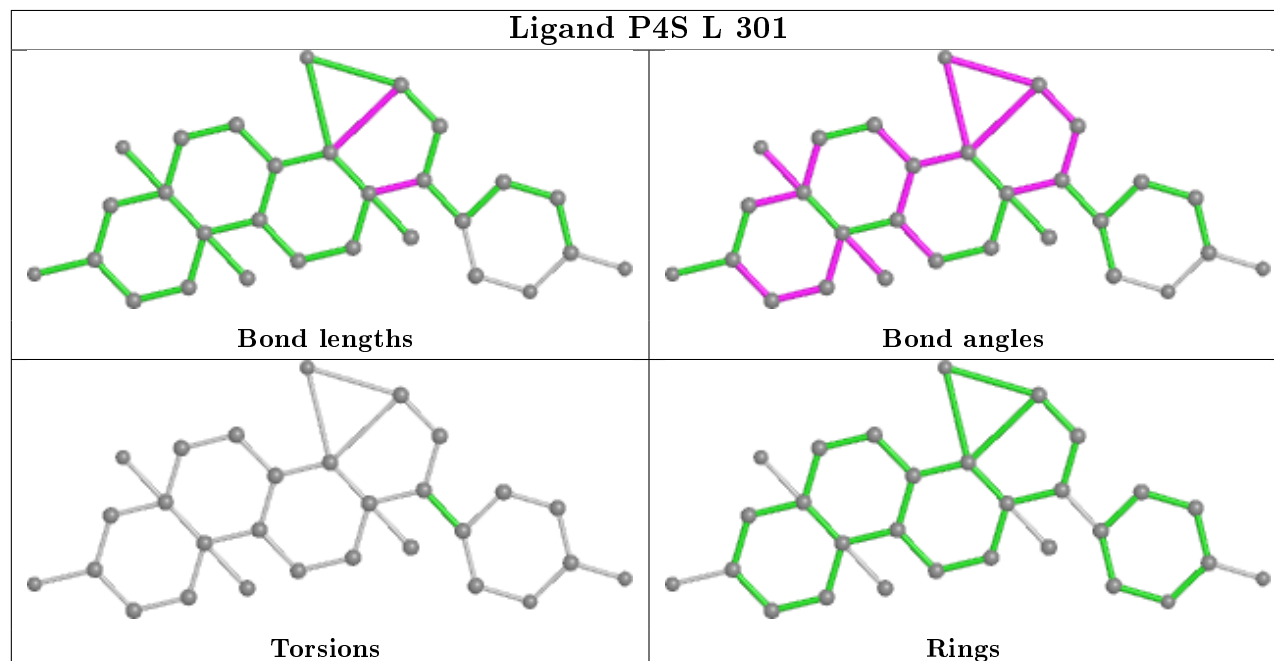
There are no torsion outliers.

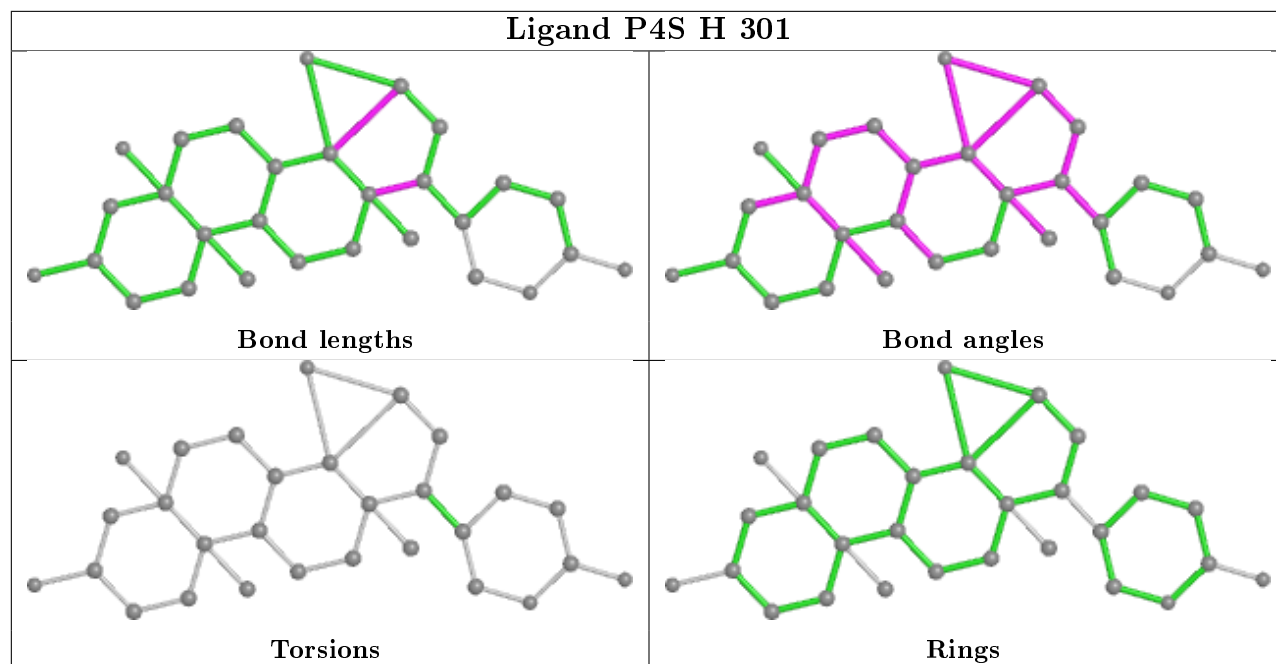
There are no ring outliers.

3 monomers are involved in 3 short contacts:

Mol	Chain	Res	Type	Clashes	Symm-Clashes
5	L	301	P4S	1	0
6	A	301	SO4	1	0
5	H	301	P4S	1	0

The following is a two-dimensional graphical depiction of Mogul quality analysis of bond lengths, bond angles, torsion angles, and ring geometry for all instances of the Ligand of Interest. In addition, ligands with molecular weight > 250 and outliers as shown on the validation Tables will also be included. For torsion angles, if less than 5% of the Mogul distribution of torsion angles is within 10 degrees of the torsion angle in question, then that torsion angle is considered an outlier. Any bond that is central to one or more torsion angles identified as an outlier by Mogul will be highlighted in the graph. For rings, the root-mean-square deviation (RMSD) between the ring in question and similar rings identified by Mogul is calculated over all ring torsion angles. If the average RMSD is greater than 60 degrees and the minimal RMSD between the ring in question and any Mogul-identified rings is also greater than 60 degrees, then that ring is considered an outlier. The outliers are highlighted in purple. The color gray indicates Mogul did not find sufficient equivalents in the CSD to analyse the geometry.





5.7 Other polymers [i](#)

There are no such residues in this entry.

5.8 Polymer linkage issues [i](#)

There are no chain breaks in this entry.

6 Fit of model and data ⓘ

6.1 Protein, DNA and RNA chains ⓘ

In the following table, the column labelled ‘#RSRZ> 2’ contains the number (and percentage) of RSRZ outliers, followed by percent RSRZ outliers for the chain as percentile scores relative to all X-ray entries and entries of similar resolution. The OWAB column contains the minimum, median, 95th percentile and maximum values of the occupancy-weighted average B-factor per residue. The column labelled ‘Q< 0.9’ lists the number of (and percentage) of residues with an average occupancy less than 0.9.

Mol	Chain	Analysed	<RSRZ>	#RSRZ>2	OWAB(Å ²)	Q<0.9
1	H	204/214 (95%)	-0.10	3 (1%) 73 60	57, 81, 116, 125	0
2	L	213/215 (99%)	-0.22	1 (0%) 91 83	48, 71, 96, 108	1 (0%)
3	A	213/223 (95%)	0.45	23 (10%) 5 3	62, 130, 190, 211	0
4	B	213/214 (99%)	0.25	7 (3%) 46 31	62, 127, 202, 220	0
All	All	843/866 (97%)	0.10	34 (4%) 38 25	48, 88, 179, 220	1 (0%)

All (34) RSRZ outliers are listed below:

Mol	Chain	Res	Type	RSRZ
3	A	198	VAL	5.5
3	A	197	THR	4.3
3	A	218	ARG	4.3
3	A	215	ILE	3.9
3	A	196	GLU	3.7
3	A	217	PRO	3.3
3	A	163	SER	3.2
3	A	131	PRO	3.1
3	A	195	SER	2.9
3	A	187	THR	2.9
3	A	164	LEU	2.8
3	A	189	PRO	2.7
4	B	182	THR	2.6
4	B	213	GLU	2.5
3	A	84	SER	2.4
4	B	106	ILE	2.4
4	B	212	GLY	2.4
3	A	185	SER	2.3
4	B	108	ARG	2.3
3	A	143	LEU	2.3
3	A	160	ASN	2.3

Continued on next page...

Continued from previous page...

Mol	Chain	Res	Type	RSRZ
3	A	125	SER	2.3
3	A	216	VAL	2.3
4	B	110	ASP	2.2
3	A	66	ASP	2.2
1	H	21	ILE	2.2
1	H	22	ASN	2.1
4	B	109	ALA	2.1
2	L	1	GLU	2.1
1	H	76	ASP	2.0
3	A	193	TRP	2.0
3	A	121	THR	2.0
3	A	158	THR	2.0
3	A	190	SER	2.0

6.2 Non-standard residues in protein, DNA, RNA chains [i](#)

There are no non-standard protein/DNA/RNA residues in this entry.

6.3 Carbohydrates [i](#)

There are no carbohydrates in this entry.

6.4 Ligands [i](#)

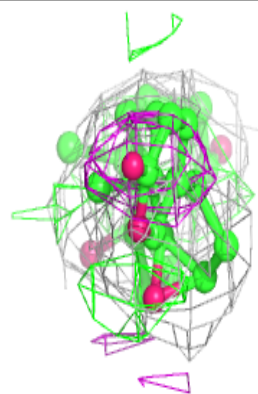
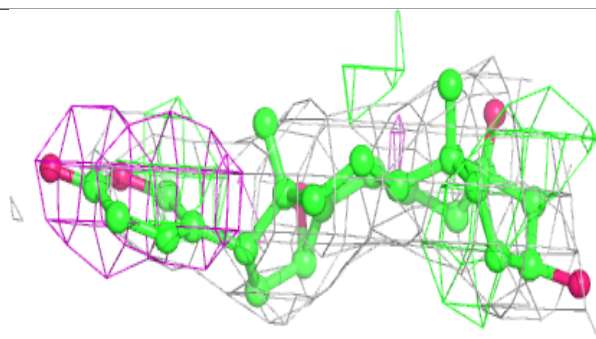
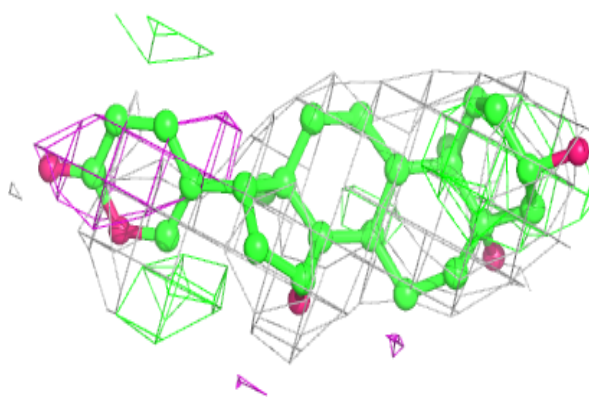
In the following table, the Atoms column lists the number of modelled atoms in the group and the number defined in the chemical component dictionary. The B-factors column lists the minimum, median, 95th percentile and maximum values of B factors of atoms in the group. The column labelled 'Q< 0.9' lists the number of atoms with occupancy less than 0.9.

Mol	Type	Chain	Res	Atoms	RSCC	RSR	B-factors(\AA^2)	Q<0.9
5	P4S	L	301	29/29	0.89	0.38	67,70,89,92	0
6	SO4	A	301	5/5	0.93	0.18	96,97,97,101	0
5	P4S	H	301	29/29	0.94	0.29	65,66,68,69	0

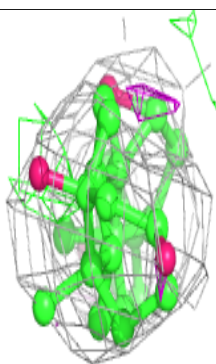
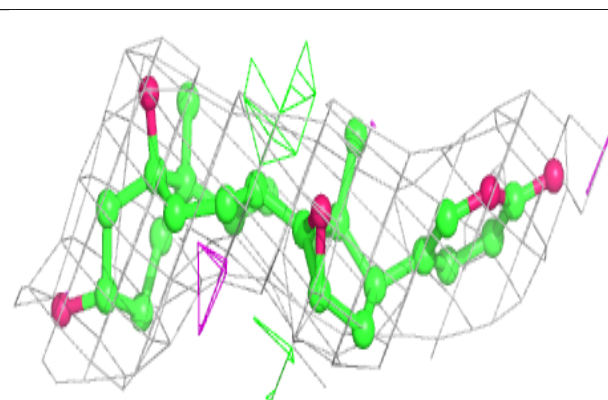
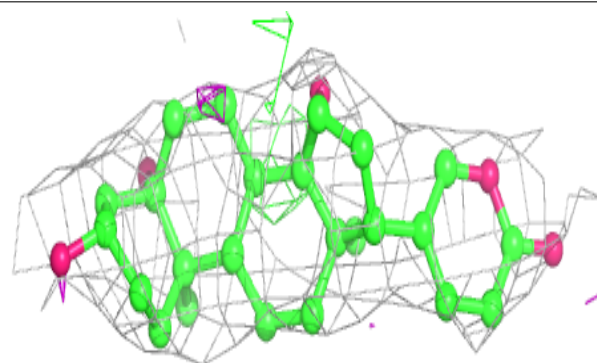
The following is a graphical depiction of the model fit to experimental electron density of all instances of the Ligand of Interest. In addition, ligands with molecular weight > 250 and outliers as shown on the geometry validation Tables will also be included. Each fit is shown from different orientation to approximate a three-dimensional view.

Electron density around P4S L 301:

$2mF_o-DF_c$ (at 0.7 rmsd) in gray
 mF_o-DF_c (at 3 rmsd) in purple (negative)
and green (positive)

**Electron density around P4S H 301:**

$2mF_o-DF_c$ (at 0.7 rmsd) in gray
 mF_o-DF_c (at 3 rmsd) in purple (negative)
and green (positive)



6.5 Other polymers [i](#)

There are no such residues in this entry.