



# wwPDB X-ray Structure Validation Summary Report ⓘ

Oct 16, 2021 – 06:11 PM EDT

PDB ID : 1PZY  
Title : W314A-BETA1,4-GALACTOSYLTRANSFERASE-I COM-  
PLEXED WITH ALPHA-LACTALBUMIN IN THE PRESENCE OF N-  
ACETYLGLUCOSAMINE, UDP AND MANGANESE  
Authors : Ramasamy, V.; Ramakrishnan, B.; Boeggeman, E.; Qasba, P.K.  
Deposited on : 2003-07-14  
Resolution : 2.30 Å(reported)

This is a wwPDB X-ray Structure Validation Summary Report for a publicly released PDB entry.

We welcome your comments at [validation@mail.wwpdb.org](mailto:validation@mail.wwpdb.org)

A user guide is available at

<https://www.wwpdb.org/validation/2017/XrayValidationReportHelp>

with specific help available everywhere you see the ⓘ symbol.

---

The following versions of software and data (see [references ⓘ](#)) were used in the production of this report:

MolProbity : 4.02b-467  
Mogul : 1.8.5 (274361), CSD as541be (2020)  
Xtriage (Phenix) : 1.13  
EDS : 2.23.2  
buster-report : 1.1.7 (2018)  
Percentile statistics : 20191225.v01 (using entries in the PDB archive December 25th 2019)  
Refmac : 5.8.0158  
CCP4 : 7.0.044 (Gargrove)  
Ideal geometry (proteins) : Engh & Huber (2001)  
Ideal geometry (DNA, RNA) : Parkinson et al. (1996)  
Validation Pipeline (wwPDB-VP) : 2.23.2

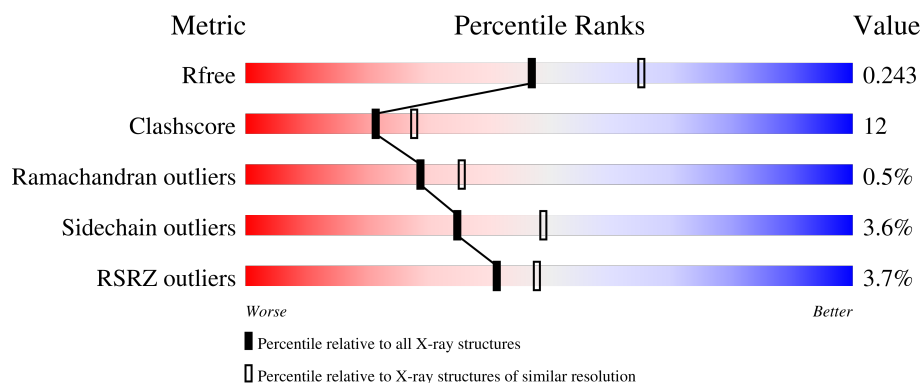
# 1 Overall quality at a glance

The following experimental techniques were used to determine the structure:

*X-RAY DIFFRACTION*

The reported resolution of this entry is 2.30 Å.

Percentile scores (ranging between 0-100) for global validation metrics of the entry are shown in the following graphic. The table shows the number of entries on which the scores are based.



Metric	Whole archive (#Entries)	Similar resolution (#Entries, resolution range(Å))
$R_{free}$	130704	5042 (2.30-2.30)
Clashscore	141614	5643 (2.30-2.30)
Ramachandran outliers	138981	5575 (2.30-2.30)
Sidechain outliers	138945	5575 (2.30-2.30)
RSRZ outliers	127900	4938 (2.30-2.30)

The table below summarises the geometric issues observed across the polymeric chains and their fit to the electron density. The red, orange, yellow and green segments of the lower bar indicate the fraction of residues that contain outliers for  $\geq 3$ , 2, 1 and 0 types of geometric quality criteria respectively. A grey segment represents the fraction of residues that are not modelled. The numeric value for each fraction is indicated below the corresponding segment, with a dot representing fractions  $\leq 5\%$ . The upper red bar (where present) indicates the fraction of residues that have poor fit to the electron density. The numeric value is given above the bar.

Mol	Chain	Length	Quality of chain
1	A	123	<div> <div>5%</div> <div> <div></div> <div>76%</div> <div>24%</div> </div> </div>
1	C	123	<div> <div>5%</div> <div> <div></div> <div>75%</div> <div>20%</div> <div>5%</div> </div> </div>
2	B	286	<div> <div>3%</div> <div> <div></div> <div>66%</div> <div>27%</div> <div>• 5%</div> </div> </div>
2	D	286	<div> <div>3%</div> <div> <div></div> <div>71%</div> <div>22%</div> <div>• 5%</div> </div> </div>

## 2 Entry composition

There are 7 unique types of molecules in this entry. The entry contains 6699 atoms, of which 0 are hydrogens and 0 are deuteriums.

In the tables below, the ZeroOcc column contains the number of atoms modelled with zero occupancy, the AltConf column contains the number of residues with at least one atom in alternate conformation and the Trace column contains the number of residues modelled with at most 2 atoms.

- Molecule 1 is a protein called ALPHA-LACTALBUMIN.

Mol	Chain	Residues	Atoms					ZeroOcc	AltConf	Trace
1	A	123	Total	C	N	O	S	0	0	0
			980	620	156	195	9			
1	C	123	Total	C	N	O	S	0	0	0
			980	620	156	195	9			

- Molecule 2 is a protein called BETA-1,4-GALACTOSYLTRANSFERASE.

Mol	Chain	Residues	Atoms					ZeroOcc	AltConf	Trace
2	B	271	Total	C	N	O	S	0	0	0
			2202	1411	380	398	13			
2	D	271	Total	C	N	O	S	0	0	0
			2202	1411	380	398	13			

There are 30 discrepancies between the modelled and reference sequences:

Chain	Residue	Modelled	Actual	Comment	Reference
B	117	ALA	-	expression tag	UNP P08037
B	118	SER	-	expression tag	UNP P08037
B	119	MET	-	expression tag	UNP P08037
B	120	THR	-	expression tag	UNP P08037
B	121	GLY	-	expression tag	UNP P08037
B	122	GLY	-	expression tag	UNP P08037
B	123	GLN	-	expression tag	UNP P08037
B	124	GLN	-	expression tag	UNP P08037
B	125	MET	-	expression tag	UNP P08037
B	126	GLY	-	expression tag	UNP P08037
B	127	ARG	-	expression tag	UNP P08037
B	128	GLY	-	expression tag	UNP P08037
B	129	SER	-	expression tag	UNP P08037
B	314	ALA	TRP	engineered mutation	UNP P08037
B	342	THR	CYS	engineered mutation	UNP P08037
D	117	ALA	-	expression tag	UNP P08037

*Continued on next page...*

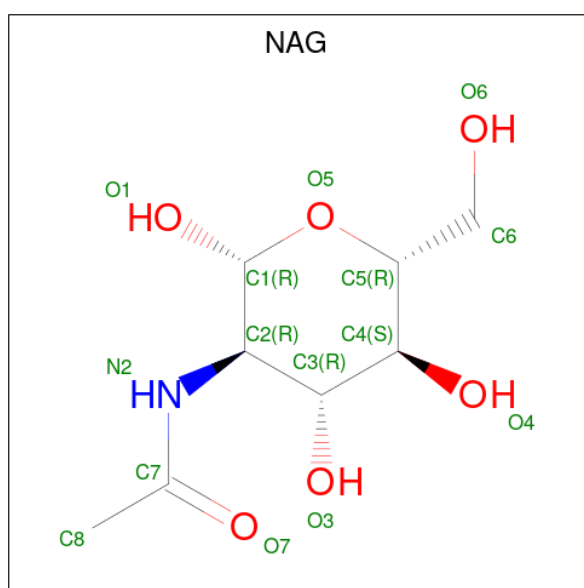
Continued from previous page...

Chain	Residue	Modelled	Actual	Comment	Reference
D	118	SER	-	expression tag	UNP P08037
D	119	MET	-	expression tag	UNP P08037
D	120	THR	-	expression tag	UNP P08037
D	121	GLY	-	expression tag	UNP P08037
D	122	GLY	-	expression tag	UNP P08037
D	123	GLN	-	expression tag	UNP P08037
D	124	GLN	-	expression tag	UNP P08037
D	125	MET	-	expression tag	UNP P08037
D	126	GLY	-	expression tag	UNP P08037
D	127	ARG	-	expression tag	UNP P08037
D	128	GLY	-	expression tag	UNP P08037
D	129	SER	-	expression tag	UNP P08037
D	314	ALA	TRP	engineered mutation	UNP P08037
D	342	THR	CYS	engineered mutation	UNP P08037

- Molecule 3 is CALCIUM ION (three-letter code: CA) (formula: Ca).

Mol	Chain	Residues	Atoms	ZeroOcc	AltConf
3	A	1	Total Ca 1 1	0	0
3	C	1	Total Ca 1 1	0	0

- Molecule 4 is 2-acetamido-2-deoxy-beta-D-glucopyranose (three-letter code: NAG) (formula: C<sub>8</sub>H<sub>15</sub>NO<sub>6</sub>).

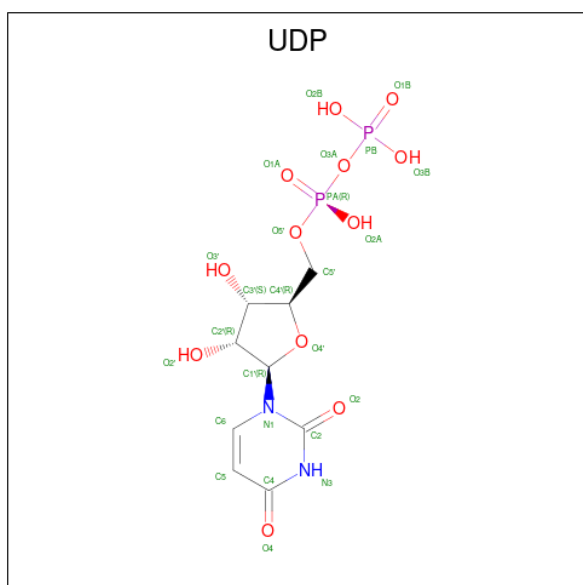


Mol	Chain	Residues	Atoms				ZeroOcc	AltConf
4	B	1	Total	C	N	O	0	0
			15	8	1	6		
4	D	1	Total	C	N	O	0	0
			15	8	1	6		

- Molecule 5 is MANGANESE (II) ION (three-letter code: MN) (formula: Mn).

Mol	Chain	Residues	Atoms		ZeroOcc	AltConf
5	B	1	Total	Mn	0	0
			1	1		
5	D	1	Total	Mn	0	0
			1	1		

- Molecule 6 is URIDINE-5'-DIPHOSPHATE (three-letter code: UDP) (formula: C<sub>9</sub>H<sub>14</sub>N<sub>2</sub>O<sub>12</sub>P<sub>2</sub>).



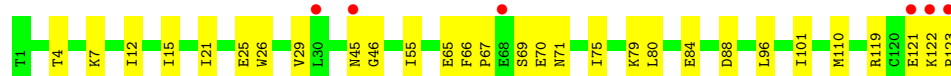
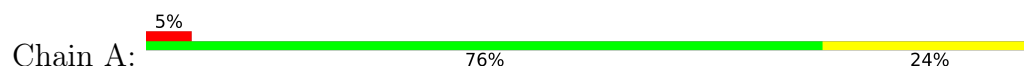
*Continued from previous page...*

Mol	Chain	Residues	Atoms		ZeroOcc	AltConf
7	B	85	Total 85	O 85	0	0
7	C	25	Total 25	O 25	0	0
7	D	95	Total 95	O 95	0	0

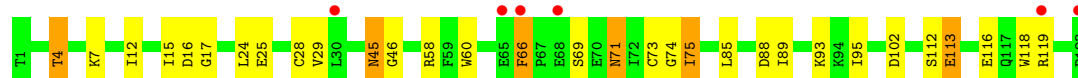
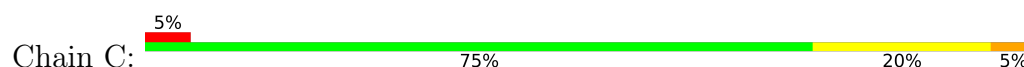
### 3 Residue-property plots [i](#)

These plots are drawn for all protein, RNA, DNA and oligosaccharide chains in the entry. The first graphic for a chain summarises the proportions of the various outlier classes displayed in the second graphic. The second graphic shows the sequence view annotated by issues in geometry and electron density. Residues are color-coded according to the number of geometric quality criteria for which they contain at least one outlier: green = 0, yellow = 1, orange = 2 and red = 3 or more. A red dot above a residue indicates a poor fit to the electron density ( $RSRZ > 2$ ). Stretches of 2 or more consecutive residues without any outlier are shown as a green connector. Residues present in the sample, but not in the model, are shown in grey.

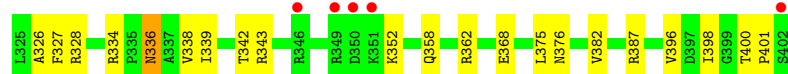
- Molecule 1: ALPHA-LACTALBUMIN



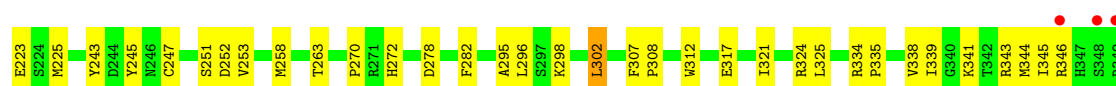
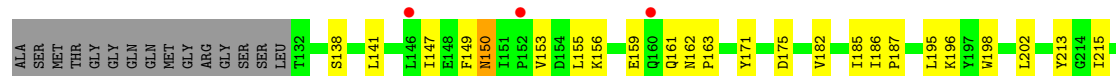
- Molecule 1: ALPHA-LACTALBUMIN

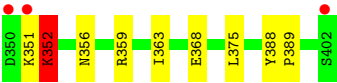


- Molecule 2: BETA-1,4-GALACTOSYLTRANSFERASE



- Molecule 2: BETA-1,4-GALACTOSYLTRANSFERASE







## 4 Data and refinement statistics

Property	Value	Source
Space group	P 1 21 1	Depositor
Cell constants a, b, c, $\alpha$ , $\beta$ , $\gamma$	55.29Å 98.75Å 102.79Å 90.00° 103.92° 90.00°	Depositor
Resolution (Å)	19.95 – 2.30 19.95 – 2.30	Depositor EDS
% Data completeness (in resolution range)	97.1 (19.95-2.30) 97.3 (19.95-2.30)	Depositor EDS
$R_{merge}$	(Not available)	Depositor
$R_{sym}$	0.07	Depositor
$\langle I/\sigma(I) \rangle$ <sup>1</sup>	2.16 (at 2.30Å)	Xtriage
Refinement program	CNS 1.1	Depositor
R, $R_{free}$	0.207 , 0.253 0.198 , 0.243	Depositor DCC
$R_{free}$ test set	4654 reflections (10.05%)	wwPDB-VP
Wilson B-factor (Å <sup>2</sup> )	37.2	Xtriage
Anisotropy	0.383	Xtriage
Bulk solvent $k_{sol}$ (e/Å <sup>3</sup> ), $B_{sol}$ (Å <sup>2</sup> )	0.32 , 35.3	EDS
L-test for twinning <sup>2</sup>	$\langle  L  \rangle = 0.49$ , $\langle L^2 \rangle = 0.32$	Xtriage
Estimated twinning fraction	0.029 for h,-k,-h-l	Xtriage
$F_o, F_c$ correlation	0.95	EDS
Total number of atoms	6699	wwPDB-VP
Average B, all atoms (Å <sup>2</sup> )	42.0	wwPDB-VP

Xtriage's analysis on translational NCS is as follows: *The largest off-origin peak in the Patterson function is 5.60% of the height of the origin peak. No significant pseudotranslation is detected.*

<sup>1</sup>Intensities estimated from amplitudes.

<sup>2</sup>Theoretical values of  $\langle |L| \rangle$ ,  $\langle L^2 \rangle$  for acentric reflections are 0.5, 0.333 respectively for untwinned datasets, and 0.375, 0.2 for perfectly twinned datasets.

## 5 Model quality [i](#)

### 5.1 Standard geometry [i](#)

Bond lengths and bond angles in the following residue types are not validated in this section: NAG, CA, UDP, MN

The Z score for a bond length (or angle) is the number of standard deviations the observed value is removed from the expected value. A bond length (or angle) with  $|Z| > 5$  is considered an outlier worth inspection. RMSZ is the root-mean-square of all Z scores of the bond lengths (or angles).

Mol	Chain	Bond lengths		Bond angles	
		RMSZ	$\# Z  > 5$	RMSZ	$\# Z  > 5$
1	A	0.36	0/1001	0.60	0/1350
1	C	0.33	0/1001	0.60	0/1350
2	B	0.36	0/2260	0.63	1/3060 (0.0%)
2	D	0.37	0/2260	0.64	0/3060
All	All	0.36	0/6522	0.63	1/8820 (0.0%)

There are no bond length outliers.

All (1) bond angle outliers are listed below:

Mol	Chain	Res	Type	Atoms	Z	Observed(°)	Ideal(°)
2	B	212	ASP	N-CA-C	-5.09	97.27	111.00

There are no chirality outliers.

There are no planarity outliers.

### 5.2 Too-close contacts [i](#)

In the following table, the Non-H and H(model) columns list the number of non-hydrogen atoms and hydrogen atoms in the chain respectively. The H(added) column lists the number of hydrogen atoms added and optimized by MolProbity. The Clashes column lists the number of clashes within the asymmetric unit, whereas Symm-Clashes lists symmetry-related clashes.

Mol	Chain	Non-H	H(model)	H(added)	Clashes	Symm-Clashes
1	A	980	0	936	19	0
1	C	980	0	936	23	0
2	B	2202	0	2171	58	0
2	D	2202	0	2171	53	0
3	A	1	0	0	0	0
3	C	1	0	0	0	0

*Continued on next page...*

*Continued from previous page...*

Mol	Chain	Non-H	H(model)	H(added)	Clashes	Symm-Clashes
4	B	15	0	15	1	0
4	D	15	0	15	0	0
5	B	1	0	0	0	0
5	D	1	0	0	0	0
6	B	25	0	11	1	0
6	D	25	0	11	1	0
7	A	46	0	0	2	0
7	B	85	0	0	0	0
7	C	25	0	0	1	0
7	D	95	0	0	2	0
All	All	6699	0	6266	153	0

The all-atom clashscore is defined as the number of clashes found per 1000 atoms (including hydrogen atoms). The all-atom clashscore for this structure is 12.

The worst 5 of 153 close contacts within the same asymmetric unit are listed below, sorted by their clash magnitude.

Atom-1	Atom-2	Interatomic distance (Å)	Clash overlap (Å)
2:D:352:LYS:HE3	2:D:352:LYS:HA	1.47	0.94
2:B:336:ASN:ND2	2:B:339:ILE:H	1.76	0.84
1:A:66:PHE:HB3	1:A:69:SER:HB2	1.59	0.84
2:B:336:ASN:HD22	2:B:336:ASN:C	1.80	0.83
1:C:71:ASN:HD21	1:C:75:ILE:H	1.24	0.82

There are no symmetry-related clashes.

## 5.3 Torsion angles [i](#)

### 5.3.1 Protein backbone [i](#)

In the following table, the Percentiles column shows the percent Ramachandran outliers of the chain as a percentile score with respect to all X-ray entries followed by that with respect to entries of similar resolution.

The Analysed column shows the number of residues for which the backbone conformation was analysed, and the total number of residues.

Mol	Chain	Analysed	Favoured	Allowed	Outliers	Percentiles	
1	A	121/123 (98%)	111 (92%)	10 (8%)	0	100	100
1	C	121/123 (98%)	108 (89%)	12 (10%)	1 (1%)	19	23

*Continued on next page...*

*Continued from previous page...*

Mol	Chain	Analysed	Favoured	Allowed	Outliers	Percentiles	
2	B	269/286 (94%)	258 (96%)	9 (3%)	2 (1%)	22	26
2	D	269/286 (94%)	257 (96%)	11 (4%)	1 (0%)	34	42
All	All	780/818 (95%)	734 (94%)	42 (5%)	4 (0%)	29	35

All (4) Ramachandran outliers are listed below:

Mol	Chain	Res	Type
2	B	175	ASP
1	C	113	GLU
2	D	352	LYS
2	B	327	PHE

### 5.3.2 Protein sidechains ⓘ

In the following table, the Percentiles column shows the percent sidechain outliers of the chain as a percentile score with respect to all X-ray entries followed by that with respect to entries of similar resolution.

The Analysed column shows the number of residues for which the sidechain conformation was analysed, and the total number of residues.

Mol	Chain	Analysed	Rotameric	Outliers	Percentiles	
1	A	109/109 (100%)	106 (97%)	3 (3%)	43	60
1	C	109/109 (100%)	102 (94%)	7 (6%)	17	23
2	B	243/253 (96%)	235 (97%)	8 (3%)	38	53
2	D	243/253 (96%)	236 (97%)	7 (3%)	42	58
All	All	704/724 (97%)	679 (96%)	25 (4%)	35	49

5 of 25 residues with a non-rotameric sidechain are listed below:

Mol	Chain	Res	Type
1	C	71	ASN
1	C	116	GLU
2	D	368	GLU
1	C	88	ASP
2	D	150	ASN

Sometimes sidechains can be flipped to improve hydrogen bonding and reduce clashes. 5 of 15 such sidechains are listed below:

Mol	Chain	Res	Type
1	C	45	ASN
2	D	310	ASN
1	C	71	ASN
2	D	358	GLN
2	D	210	GLN

### 5.3.3 RNA [i](#)

There are no RNA molecules in this entry.

### 5.4 Non-standard residues in protein, DNA, RNA chains [i](#)

There are no non-standard protein/DNA/RNA residues in this entry.

### 5.5 Carbohydrates [i](#)

There are no monosaccharides in this entry.

### 5.6 Ligand geometry [i](#)

Of 8 ligands modelled in this entry, 4 are monoatomic - leaving 4 for Mogul analysis.

In the following table, the Counts columns list the number of bonds (or angles) for which Mogul statistics could be retrieved, the number of bonds (or angles) that are observed in the model and the number of bonds (or angles) that are defined in the Chemical Component Dictionary. The Link column lists molecule types, if any, to which the group is linked. The Z score for a bond length (or angle) is the number of standard deviations the observed value is removed from the expected value. A bond length (or angle) with  $|Z| > 2$  is considered an outlier worth inspection. RMSZ is the root-mean-square of all Z scores of the bond lengths (or angles).

Mol	Type	Chain	Res	Link	Bond lengths			Bond angles		
					Counts	RMSZ	$\# Z  > 2$	Counts	RMSZ	$\# Z  > 2$
6	UDP	D	409	5	20,26,26	2.13	4 (20%)	25,40,40	1.58	6 (24%)
4	NAG	B	405	-	15,15,15	0.58	0	21,21,21	0.61	0
6	UDP	B	407	5	20,26,26	2.20	5 (25%)	25,40,40	1.53	3 (12%)
4	NAG	D	406	-	15,15,15	0.46	0	21,21,21	0.59	0

In the following table, the Chirals column lists the number of chiral outliers, the number of chiral centers analysed, the number of these observed in the model and the number defined in the Chemical Component Dictionary. Similar counts are reported in the Torsion and Rings columns. '-' means no outliers of that kind were identified.

Mol	Type	Chain	Res	Link	Chirals	Torsions	Rings
6	UDP	D	409	5	-	5/14/32/32	0/2/2/2
4	NAG	B	405	-	-	0/6/26/26	0/1/1/1
6	UDP	B	407	5	-	1/14/32/32	0/2/2/2
4	NAG	D	406	-	-	2/6/26/26	0/1/1/1

The worst 5 of 9 bond length outliers are listed below:

Mol	Chain	Res	Type	Atoms	Z	Observed(Å)	Ideal(Å)
6	D	409	UDP	C6-N1	5.85	1.43	1.35
6	B	407	UDP	C6-N1	5.73	1.42	1.35
6	D	409	UDP	C4-N3	5.16	1.42	1.33
6	B	407	UDP	C4-N3	5.15	1.42	1.33
6	B	407	UDP	PB-O1B	4.18	1.64	1.50

The worst 5 of 9 bond angle outliers are listed below:

Mol	Chain	Res	Type	Atoms	Z	Observed(°)	Ideal(°)
6	B	407	UDP	C5-C4-N3	-3.77	115.00	123.31
6	D	409	UDP	C5-C4-N3	-3.74	115.08	123.31
6	B	407	UDP	O3B-PB-O1B	-3.70	96.18	110.68
6	B	407	UDP	O2B-PB-O1B	3.21	123.26	110.68
6	D	409	UDP	O3B-PB-O2B	3.20	119.88	107.64

There are no chirality outliers.

5 of 8 torsion outliers are listed below:

Mol	Chain	Res	Type	Atoms
6	D	409	UDP	C5'-O5'-PA-O1A
4	D	406	NAG	C8-C7-N2-C2
6	D	409	UDP	C3'-C4'-C5'-O5'
6	D	409	UDP	O4'-C4'-C5'-O5'
6	D	409	UDP	PA-O3A-PB-O1B

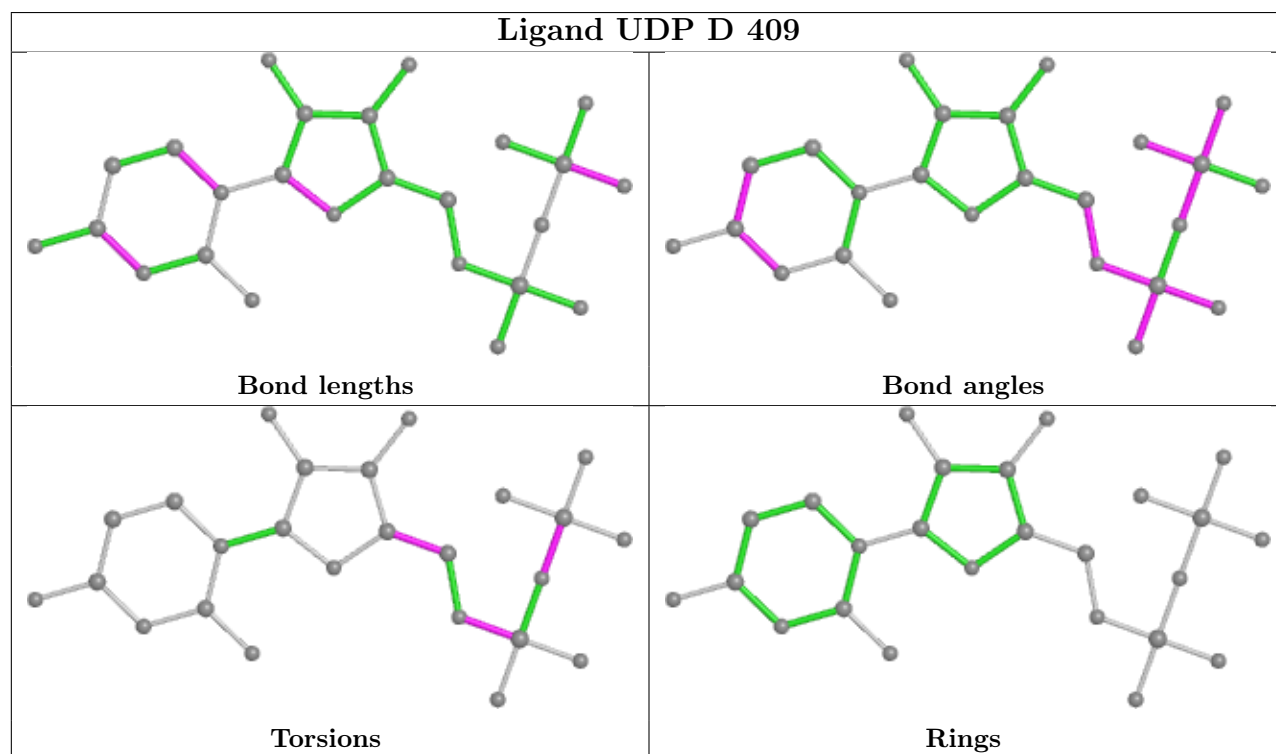
There are no ring outliers.

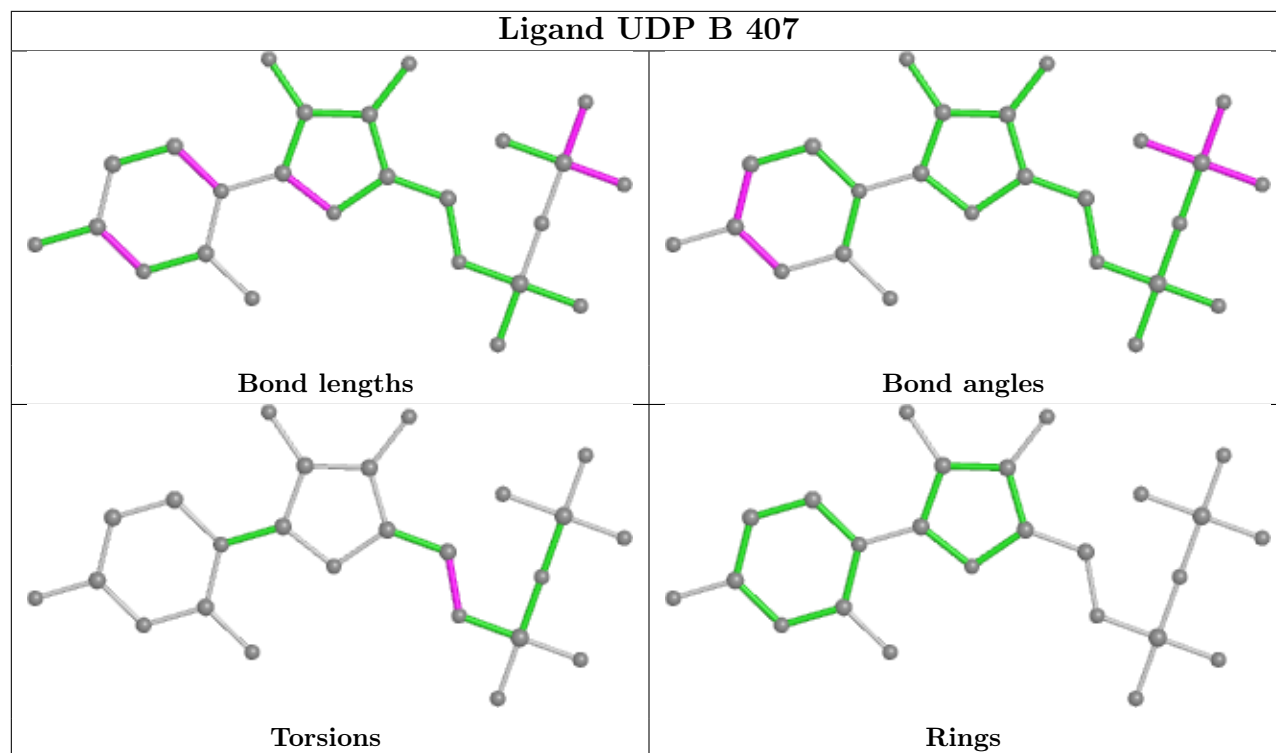
3 monomers are involved in 3 short contacts:

Mol	Chain	Res	Type	Clashes	Symm-Clashes
6	D	409	UDP	1	0
4	B	405	NAG	1	0
6	B	407	UDP	1	0

The following is a two-dimensional graphical depiction of Mogul quality analysis of bond lengths,

bond angles, torsion angles, and ring geometry for all instances of the Ligand of Interest. In addition, ligands with molecular weight > 250 and outliers as shown on the validation Tables will also be included. For torsion angles, if less than 5% of the Mogul distribution of torsion angles is within 10 degrees of the torsion angle in question, then that torsion angle is considered an outlier. Any bond that is central to one or more torsion angles identified as an outlier by Mogul will be highlighted in the graph. For rings, the root-mean-square deviation (RMSD) between the ring in question and similar rings identified by Mogul is calculated over all ring torsion angles. If the average RMSD is greater than 60 degrees and the minimal RMSD between the ring in question and any Mogul-identified rings is also greater than 60 degrees, then that ring is considered an outlier. The outliers are highlighted in purple. The color gray indicates Mogul did not find sufficient equivalents in the CSD to analyse the geometry.





## 5.7 Other polymers [i](#)

There are no such residues in this entry.

## 5.8 Polymer linkage issues [i](#)

There are no chain breaks in this entry.



## 6 Fit of model and data [i](#)

### 6.1 Protein, DNA and RNA chains [i](#)

In the following table, the column labelled ‘#RSRZ> 2’ contains the number (and percentage) of RSRZ outliers, followed by percent RSRZ outliers for the chain as percentile scores relative to all X-ray entries and entries of similar resolution. The OWAB column contains the minimum, median, 95<sup>th</sup> percentile and maximum values of the occupancy-weighted average B-factor per residue. The column labelled ‘Q< 0.9’ lists the number of (and percentage) of residues with an average occupancy less than 0.9.

Mol	Chain	Analysed	<RSRZ>	#RSRZ>2			OWAB(Å <sup>2</sup> )	Q<0.9
1	A	123/123 (100%)	0.19	6 (4%)	29	36	24, 36, 68, 105	0
1	C	123/123 (100%)	0.42	6 (4%)	29	36	31, 48, 70, 91	0
2	B	271/286 (94%)	-0.00	8 (2%)	50	57	25, 39, 60, 82	0
2	D	271/286 (94%)	-0.00	9 (3%)	46	53	22, 37, 61, 84	0
All	All	788/818 (96%)	0.09	29 (3%)	41	48	22, 39, 68, 105	0

The worst 5 of 29 RSRZ outliers are listed below:

Mol	Chain	Res	Type	RSRZ
1	A	123	PRO	10.9
1	C	123	PRO	8.7
1	A	122	LYS	5.8
2	B	402	SER	5.7
2	D	402	SER	5.5

### 6.2 Non-standard residues in protein, DNA, RNA chains [i](#)

There are no non-standard protein/DNA/RNA residues in this entry.

### 6.3 Carbohydrates [i](#)

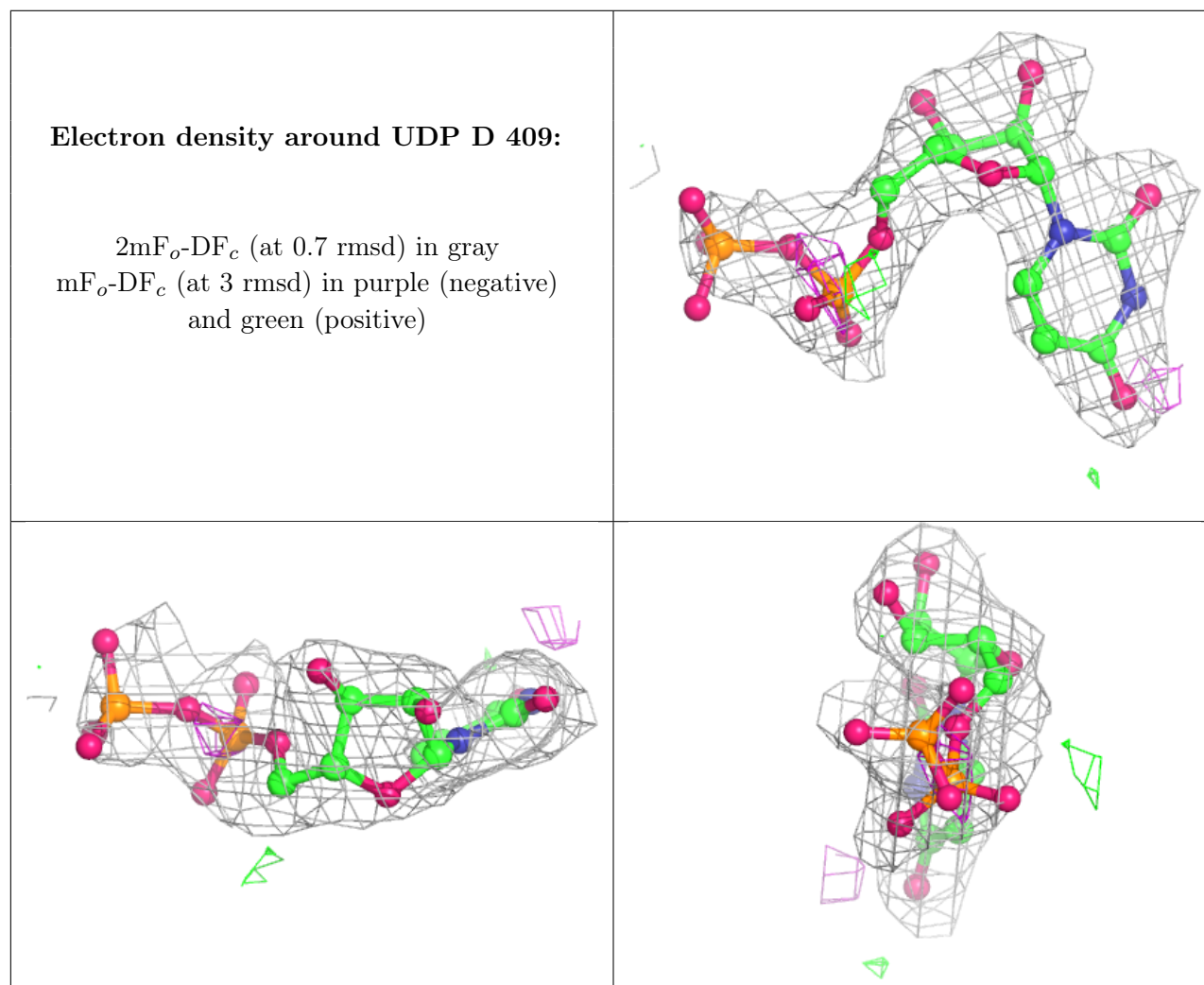
There are no monosaccharides in this entry.

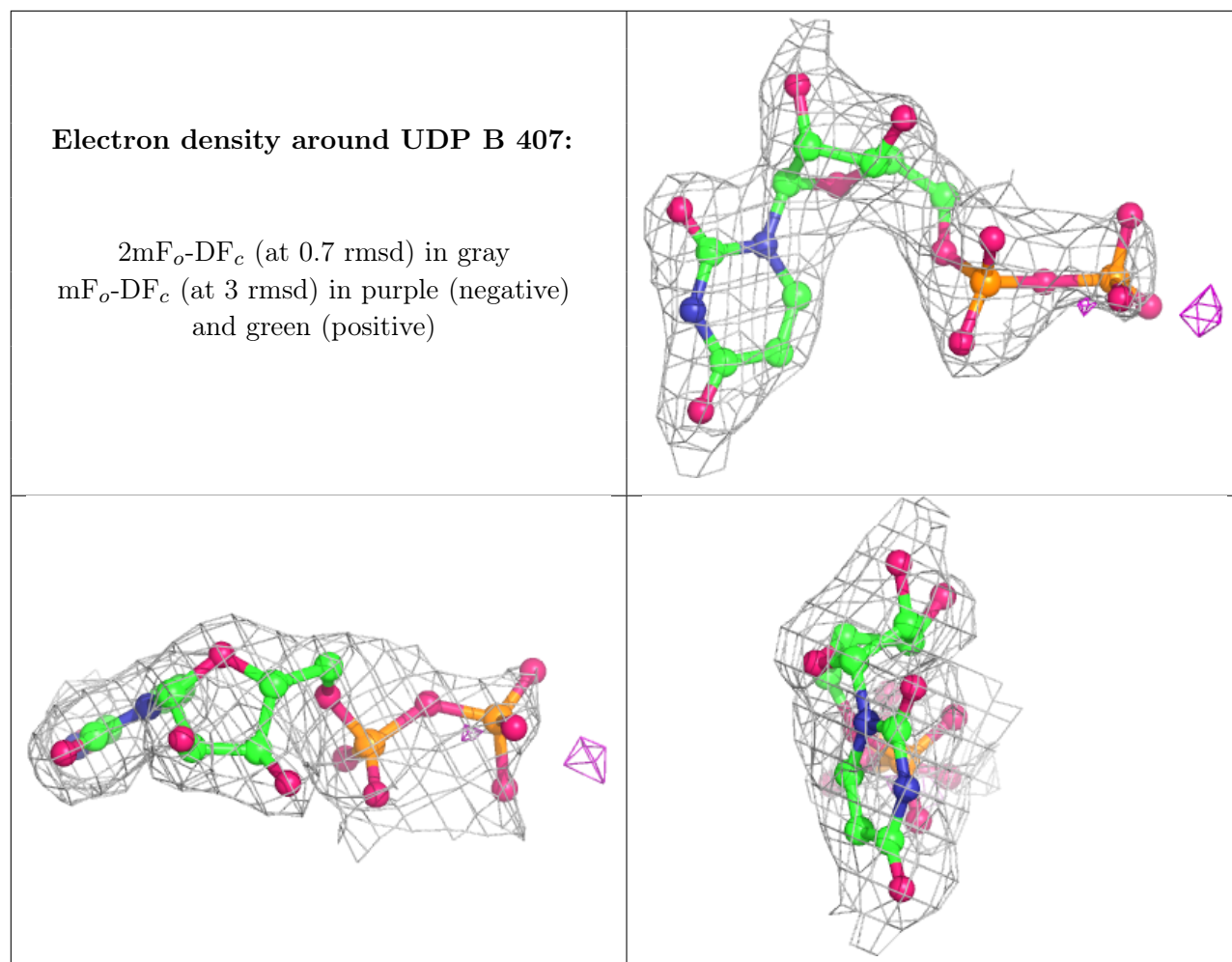
### 6.4 Ligands [i](#)

In the following table, the Atoms column lists the number of modelled atoms in the group and the number defined in the chemical component dictionary. The B-factors column lists the minimum, median, 95<sup>th</sup> percentile and maximum values of B factors of atoms in the group. The column labelled ‘Q< 0.9’ lists the number of atoms with occupancy less than 0.9.

Mol	Type	Chain	Res	Atoms	RSCC	RSR	B-factors( $\text{\AA}^2$ )	Q<0.9
6	UDP	D	409	25/25	0.84	0.19	49,57,85,86	4
6	UDP	B	407	25/25	0.90	0.16	49,54,79,81	4
5	MN	B	408	1/1	0.92	0.05	66,66,66,66	1
5	MN	D	410	1/1	0.92	0.09	79,79,79,79	1
3	CA	C	404	1/1	0.95	0.06	49,49,49,49	0
4	NAG	D	406	15/15	0.95	0.12	40,42,46,46	0
4	NAG	B	405	15/15	0.96	0.10	34,36,38,39	0
3	CA	A	403	1/1	0.98	0.05	36,36,36,36	0

The following is a graphical depiction of the model fit to experimental electron density of all instances of the Ligand of Interest. In addition, ligands with molecular weight > 250 and outliers as shown on the geometry validation Tables will also be included. Each fit is shown from different orientation to approximate a three-dimensional view.





## 6.5 Other polymers ⓘ

There are no such residues in this entry.