



Full wwPDB X-ray Structure Validation Report ⓘ

May 17, 2020 – 06:21 am BST

PDB ID : 3PZ3
Title : Crystal structure of RabGGTase(DELTA LRR; DELTA IG) in Complex with BMS-analogue 14
Authors : Guo, Z.; Bon, R.S.; Stigter, E.A.; Waldmann, H.; Alexandrov, K.; Blankenfeldt, W.; Goody, R.S.
Deposited on : 2010-12-14
Resolution : 2.00 Å(reported)

This is a Full wwPDB X-ray Structure Validation Report for a publicly released PDB entry.

We welcome your comments at validation@mail.wwpdb.org

A user guide is available at

<https://www.wwpdb.org/validation/2017/XrayValidationReportHelp>

with specific help available everywhere you see the ⓘ symbol.

The following versions of software and data (see [references ⓘ](#)) were used in the production of this report:

MolProbity : 4.02b-467
Mogul : 1.8.5 (274361), CSD as541be (2020)
Xtriage (Phenix) : 1.13
EDS : 2.11
buster-report : 1.1.7 (2018)
Percentile statistics : 20191225.v01 (using entries in the PDB archive December 25th 2019)
Refmac : 5.8.0158
CCP4 : 7.0.044 (Gargrove)
Ideal geometry (proteins) : Engh & Huber (2001)
Ideal geometry (DNA, RNA) : Parkinson et al. (1996)
Validation Pipeline (wwPDB-VP) : 2.11

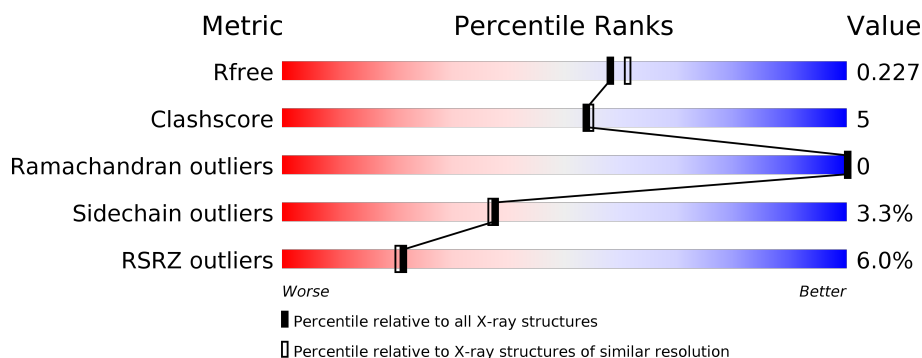
1 Overall quality at a glance

The following experimental techniques were used to determine the structure:

X-RAY DIFFRACTION

The reported resolution of this entry is 2.00 Å.

Percentile scores (ranging between 0-100) for global validation metrics of the entry are shown in the following graphic. The table shows the number of entries on which the scores are based.



Metric	Whole archive (#Entries)	Similar resolution (#Entries, resolution range(Å))
R_{free}	130704	8085 (2.00-2.00)
Clashscore	141614	9178 (2.00-2.00)
Ramachandran outliers	138981	9054 (2.00-2.00)
Sidechain outliers	138945	9053 (2.00-2.00)
RSRZ outliers	127900	7900 (2.00-2.00)

The table below summarises the geometric issues observed across the polymeric chains and their fit to the electron density. The red, orange, yellow and green segments on the lower bar indicate the fraction of residues that contain outliers for ≥ 3 , 2, 1 and 0 types of geometric quality criteria respectively. A grey segment represents the fraction of residues that are not modelled. The numeric value for each fraction is indicated below the corresponding segment, with a dot representing fractions $\leq 5\%$. The upper red bar (where present) indicates the fraction of residues that have poor fit to the electron density. The numeric value is given above the bar.

Mol	Chain	Length	Quality of chain
1	A	332	<div> <div>8%</div> <div> <div></div> <div>83%</div> <div>8%</div> <div>7%</div> </div> </div>
2	B	330	<div> <div>4%</div> <div> <div></div> <div>82%</div> <div>15%</div> <div>••</div> </div> </div>

2 Entry composition

There are 6 unique types of molecules in this entry. The entry contains 5433 atoms, of which 0 are hydrogens and 0 are deuteriums.

In the tables below, the ZeroOcc column contains the number of atoms modelled with zero occupancy, the AltConf column contains the number of residues with at least one atom in alternate conformation and the Trace column contains the number of residues modelled with at most 2 atoms.

- Molecule 1 is a protein called Geranylgeranyl transferase type-2 subunit alpha.

Mol	Chain	Residues	Atoms					ZeroOcc	AltConf	Trace
1	A	308	Total	C	N	O	S	0	5	0
			2501	1596	430	461	14			

There are 6 discrepancies between the modelled and reference sequences:

Chain	Residue	Modelled	Actual	Comment	Reference
A	-1	GLY	-	EXPRESSION TAG	UNP Q08602
A	0	HIS	-	EXPRESSION TAG	UNP Q08602
A	238	ALA	-	LINKER	UNP Q08602
A	239	GLY	-	LINKER	UNP Q08602
A	240	SER	-	LINKER	UNP Q08602
A	241	GLY	-	LINKER	UNP Q08602

- Molecule 2 is a protein called Geranylgeranyl transferase type-2 subunit beta.

Mol	Chain	Residues	Atoms					ZeroOcc	AltConf	Trace
2	B	324	Total	C	N	O	S	0	4	0
			2543	1626	420	476	21			

- Molecule 3 is ZINC ION (three-letter code: ZN) (formula: Zn).

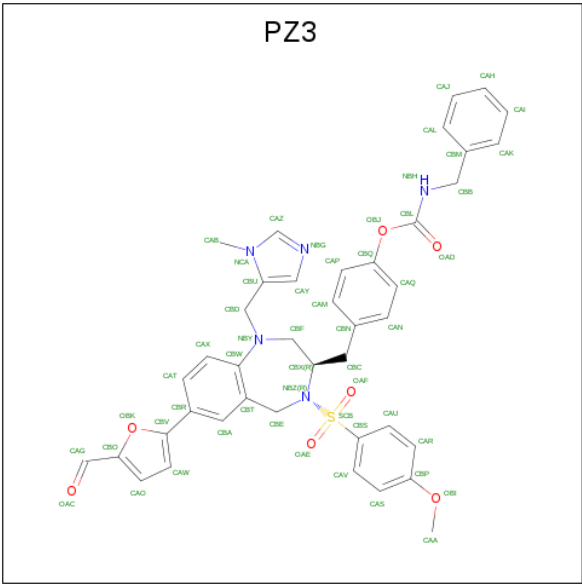
Mol	Chain	Residues	Atoms		ZeroOcc	AltConf
3	B	1	Total	Zn	0	0
			1	1		

- Molecule 4 is CALCIUM ION (three-letter code: CA) (formula: Ca).

Mol	Chain	Residues	Atoms		ZeroOcc	AltConf
4	B	1	Total	Ca	0	0
			1	1		

- Molecule 5 is 4-((3R)-7-(5-formylfuran-2-yl)-4-[(4-methoxyphenyl)sulfonyl]-1-[(1-methy

l-1H-imidazol-5-yl)methyl]-2,3,4,5-tetrahydro-1H-1,4-benzodiazepin-3-yl)methyl)phenyl benzylcarbamate (three-letter code: PZ3) (formula: C₄₁H₃₉N₅O₇S).



Mol	Chain	Residues	Atoms					ZeroOcc	AltConf
5	B	1	Total	C	N	O	S	0	0
			54	41	5	7	1		

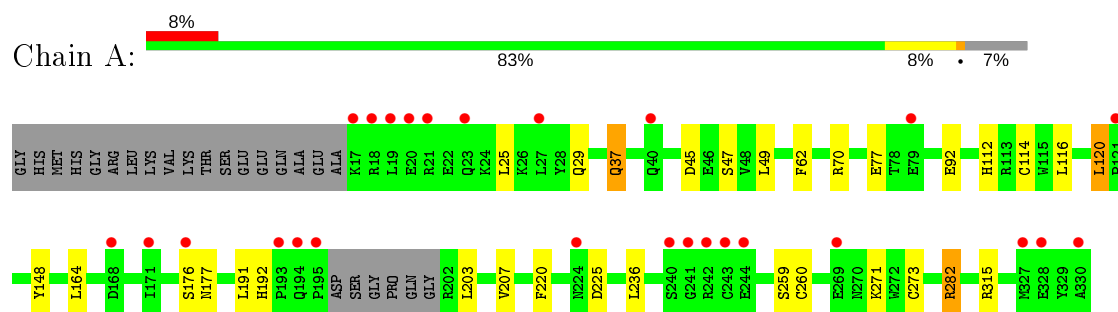
- Molecule 6 is water.

Mol	Chain	Residues	Atoms		ZeroOcc	AltConf
6	A	148	Total	O	0	0
			148	148		
6	B	185	Total	O	0	0
			185	185		

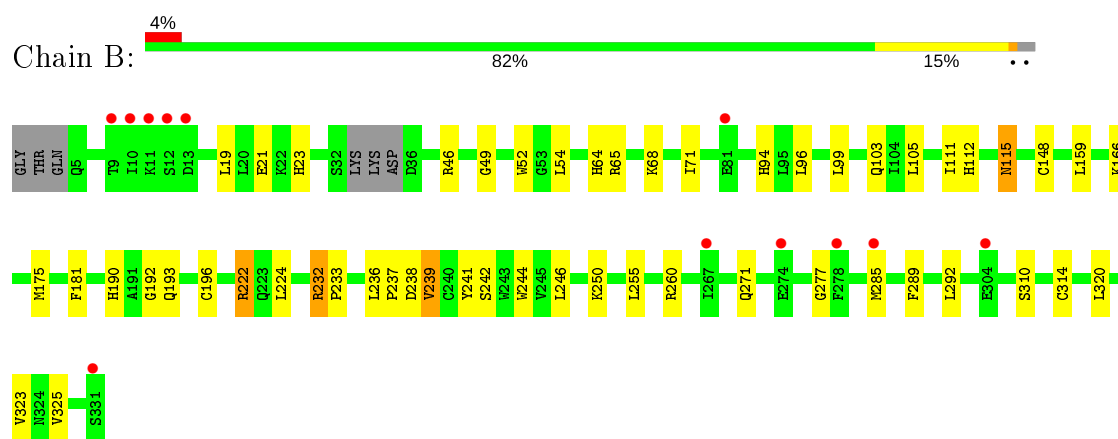
3 Residue-property plots [i](#)

These plots are drawn for all protein, RNA and DNA chains in the entry. The first graphic for a chain summarises the proportions of the various outlier classes displayed in the second graphic. The second graphic shows the sequence view annotated by issues in geometry and electron density. Residues are color-coded according to the number of geometric quality criteria for which they contain at least one outlier: green = 0, yellow = 1, orange = 2 and red = 3 or more. A red dot above a residue indicates a poor fit to the electron density ($RSRZ > 2$). Stretches of 2 or more consecutive residues without any outlier are shown as a green connector. Residues present in the sample, but not in the model, are shown in grey.

- Molecule 1: Geranylgeranyl transferase type-2 subunit alpha



- Molecule 2: Geranylgeranyl transferase type-2 subunit beta



4 Data and refinement statistics

Property	Value	Source
Space group	P 21 21 21	Depositor
Cell constants a, b, c, α , β , γ	66.73 Å 91.33 Å 114.65 Å 90.00° 90.00° 90.00°	Depositor
Resolution (Å)	20.00 – 2.00 19.92 – 2.00	Depositor EDS
% Data completeness (in resolution range)	99.1 (20.00-2.00) 99.1 (19.92-2.00)	Depositor EDS
R_{merge}	(Not available)	Depositor
R_{sym}	0.04	Depositor
$\langle I/\sigma(I) \rangle$ ¹	3.60 (at 2.01 Å)	Xtriage
Refinement program	REFMAC 5.2.0019	Depositor
R, R_{free}	0.178 , 0.224 0.186 , 0.227	Depositor DCC
R_{free} test set	2389 reflections (5.02%)	wwPDB-VP
Wilson B-factor (Å ²)	30.6	Xtriage
Anisotropy	0.111	Xtriage
Bulk solvent k_{sol} (e/Å ³), B_{sol} (Å ²)	0.36 , 49.5	EDS
L-test for twinning ²	$\langle L \rangle = 0.49$, $\langle L^2 \rangle = 0.32$	Xtriage
Estimated twinning fraction	No twinning to report.	Xtriage
F_o, F_c correlation	0.96	EDS
Total number of atoms	5433	wwPDB-VP
Average B, all atoms (Å ²)	45.0	wwPDB-VP

Xtriage's analysis on translational NCS is as follows: *The largest off-origin peak in the Patterson function is 4.11% of the height of the origin peak. No significant pseudotranslation is detected.*

¹Intensities estimated from amplitudes.

²Theoretical values of $\langle |L| \rangle$, $\langle L^2 \rangle$ for acentric reflections are 0.5, 0.333 respectively for untwinned datasets, and 0.375, 0.2 for perfectly twinned datasets.

5 Model quality [i](#)

5.1 Standard geometry [i](#)

Bond lengths and bond angles in the following residue types are not validated in this section: ZN, CA, PZ3

The Z score for a bond length (or angle) is the number of standard deviations the observed value is removed from the expected value. A bond length (or angle) with $|Z| > 5$ is considered an outlier worth inspection. RMSZ is the root-mean-square of all Z scores of the bond lengths (or angles).

Mol	Chain	Bond lengths		Bond angles	
		RMSZ	$\# Z > 5$	RMSZ	$\# Z > 5$
1	A	0.47	0/2575	0.58	3/3497 (0.1%)
2	B	0.54	0/2614	0.63	3/3544 (0.1%)
All	All	0.51	0/5189	0.60	6/7041 (0.1%)

There are no bond length outliers.

All (6) bond angle outliers are listed below:

Mol	Chain	Res	Type	Atoms	Z	Observed(°)	Ideal(°)
2	B	232	ARG	NE-CZ-NH2	-6.39	117.11	120.30
1	A	315	ARG	NE-CZ-NH2	-5.80	117.40	120.30
2	B	222	ARG	NE-CZ-NH2	-5.49	117.56	120.30
1	A	315	ARG	NE-CZ-NH1	5.46	123.03	120.30
1	A	282	ARG	NE-CZ-NH2	-5.23	117.68	120.30
2	B	46	ARG	NE-CZ-NH1	5.11	122.85	120.30

There are no chirality outliers.

There are no planarity outliers.

5.2 Too-close contacts [i](#)

In the following table, the Non-H and H(model) columns list the number of non-hydrogen atoms and hydrogen atoms in the chain respectively. The H(added) column lists the number of hydrogen atoms added and optimized by MolProbity. The Clashes column lists the number of clashes within the asymmetric unit, whereas Symm-Clashes lists symmetry related clashes.

Mol	Chain	Non-H	H(model)	H(added)	Clashes	Symm-Clashes
1	A	2501	0	2437	14	0
2	B	2543	0	2493	39	0
3	B	1	0	0	0	0

Continued on next page...

Continued from previous page...

Mol	Chain	Non-H	H(model)	H(added)	Clashes	Symm-Clashes
4	B	1	0	0	0	0
5	B	54	0	39	4	0
6	A	148	0	0	4	0
6	B	185	0	0	5	0
All	All	5433	0	4969	53	0

The all-atom clashscore is defined as the number of clashes found per 1000 atoms (including hydrogen atoms). The all-atom clashscore for this structure is 5.

All (53) close contacts within the same asymmetric unit are listed below, sorted by their clash magnitude.

Atom-1	Atom-2	Interatomic distance (Å)	Clash overlap (Å)
1:A:282:ARG:HD2	6:A:332:HOH:O	1.84	0.77
2:B:94:HIS:HD2	2:B:96:LEU:H	1.34	0.75
2:B:325:VAL:O	2:B:325:VAL:HG23	1.88	0.74
2:B:54:LEU:HD11	2:B:71:ILE:HD13	1.73	0.69
1:A:45:ASP:OD2	1:A:47:SER:OG	2.12	0.67
2:B:323:VAL:HG23	2:B:325:VAL:HG22	1.75	0.67
2:B:23:HIS:HD1	2:B:277:GLY:H	1.48	0.60
2:B:103:GLN:HE22	5:B:333:PZ3:HAI	1.66	0.58
1:A:116:LEU:O	1:A:120:LEU:HD13	2.04	0.57
1:A:92:GLU:OE2	1:A:112:HIS:HE1	1.86	0.57
2:B:246:LEU:HG	2:B:255:LEU:HD11	1.85	0.57
2:B:94:HIS:HE1	6:B:334:HOH:O	1.86	0.57
2:B:250:LYS:NZ	6:B:464:HOH:O	2.37	0.56
2:B:52:TRP:HA	2:B:292:LEU:HD22	1.90	0.53
2:B:115:ASN:C	2:B:115:ASN:HD22	2.12	0.53
1:A:70:ARG:HH11	1:A:112:HIS:HD2	1.57	0.53
1:A:177:ASN:ND2	6:A:399:HOH:O	2.43	0.52
2:B:190:HIS:CD2	2:B:192:GLY:H	2.29	0.51
2:B:241:TYR:O	2:B:242:SER:C	2.49	0.51
2:B:19:LEU:H	2:B:271:GLN:HE22	1.59	0.51
1:A:164:LEU:HD22	1:A:191:LEU:CD1	2.40	0.51
2:B:49:GLY:HA2	2:B:52:TRP:CE3	2.46	0.50
2:B:325:VAL:O	2:B:325:VAL:CG2	2.59	0.50
1:A:176:SER:O	6:A:331:HOH:O	2.19	0.49
2:B:112[B]:HIS:ND1	6:B:443:HOH:O	2.35	0.48
2:B:310:SER:HB2	2:B:320:LEU:HD12	1.95	0.47
2:B:175:MET:HE2	2:B:181:PHE:CZ	2.50	0.47
2:B:166:LYS:HE3	6:B:386:HOH:O	2.15	0.47
2:B:232:ARG:HB2	2:B:233:PRO:HD2	1.97	0.47

Continued on next page...

Continued from previous page...

Atom-1	Atom-2	Interatomic distance (Å)	Clash overlap (Å)
2:B:64:HIS:CD2	2:B:65:ARG:HG3	2.50	0.46
2:B:323:VAL:CG2	2:B:325:VAL:HG22	2.45	0.46
2:B:193:GLN:HA	2:B:196[B]:CYS:SG	2.55	0.46
2:B:239:VAL:O	2:B:242:SER:HB2	2.16	0.46
1:A:114[B]:CYS:HG	1:A:148:TYR:HE1	1.63	0.46
2:B:232:ARG:HB2	2:B:233:PRO:CD	2.46	0.45
2:B:242:SER:O	2:B:246:LEU:HB2	2.18	0.43
1:A:260:CYS:O	1:A:273[B]:CYS:SG	2.77	0.43
2:B:320:LEU:HD22	2:B:325:VAL:HG23	2.01	0.43
2:B:68:LYS:NZ	6:B:501:HOH:O	2.48	0.43
2:B:289:PHE:CE2	5:B:333:PZ3:HBEA	2.54	0.42
2:B:23:HIS:HD1	2:B:277:GLY:N	2.17	0.42
1:A:220:PHE:CZ	1:A:259:SER:HB3	2.54	0.42
2:B:314:CYS:HB3	5:B:333:PZ3:HAH	2.00	0.42
2:B:99:LEU:HD22	2:B:148:CYS:HA	2.02	0.42
1:A:37:GLN:NE2	6:A:451:HOH:O	2.49	0.41
2:B:99:LEU:HD21	5:B:333:PZ3:HAK	2.03	0.41
1:A:25:LEU:C	1:A:25:LEU:HD23	2.40	0.41
2:B:238:ASP:HB3	2:B:241:TYR:HD2	1.85	0.41
2:B:224:LEU:CD1	2:B:237:PRO:HD3	2.51	0.41
2:B:241:TYR:CD1	2:B:244:TRP:HD1	2.37	0.41
1:A:192:HIS:CE1	1:A:207:VAL:HG21	2.56	0.40
2:B:175:MET:CE	2:B:181:PHE:CZ	3.04	0.40
2:B:105:LEU:HB2	2:B:111:ILE:HD13	2.04	0.40

There are no symmetry-related clashes.

5.3 Torsion angles [i](#)

5.3.1 Protein backbone [i](#)

In the following table, the Percentiles column shows the percent Ramachandran outliers of the chain as a percentile score with respect to all X-ray entries followed by that with respect to entries of similar resolution.

The Analysed column shows the number of residues for which the backbone conformation was analysed, and the total number of residues.

Mol	Chain	Analysed	Favoured	Allowed	Outliers	Percentiles
1	A	309/332 (93%)	302 (98%)	7 (2%)	0	100 100

Continued on next page...

Continued from previous page...

Mol	Chain	Analysed	Favoured	Allowed	Outliers	Percentiles	
2	B	324/330 (98%)	320 (99%)	4 (1%)	0	100	100
All	All	633/662 (96%)	622 (98%)	11 (2%)	0	100	100

There are no Ramachandran outliers to report.

5.3.2 Protein sidechains ⓘ

In the following table, the Percentiles column shows the percent sidechain outliers of the chain as a percentile score with respect to all X-ray entries followed by that with respect to entries of similar resolution.

The Analysed column shows the number of residues for which the sidechain conformation was analysed, and the total number of residues.

Mol	Chain	Analysed	Rotameric	Outliers	Percentiles	
1	A	268/293 (92%)	258 (96%)	10 (4%)	34	32
2	B	281/283 (99%)	273 (97%)	8 (3%)	43	44
All	All	549/576 (95%)	531 (97%)	18 (3%)	38	37

All (18) residues with a non-rotameric sidechain are listed below:

Mol	Chain	Res	Type
1	A	29	GLN
1	A	37	GLN
1	A	49	LEU
1	A	62	PHE
1	A	77	GLU
1	A	120	LEU
1	A	203	LEU
1	A	225	ASP
1	A	236	LEU
1	A	271	LYS
2	B	21	GLU
2	B	115	ASN
2	B	159	LEU
2	B	222	ARG
2	B	236	LEU
2	B	239	VAL
2	B	260	ARG
2	B	285	MET

Some sidechains can be flipped to improve hydrogen bonding and reduce clashes. All (12) such sidechains are listed below:

Mol	Chain	Res	Type
1	A	33	GLN
1	A	54	GLN
1	A	111	HIS
1	A	112	HIS
1	A	177	ASN
1	A	216	GLN
1	A	217	ASN
1	A	264	GLN
2	B	94	HIS
2	B	115	ASN
2	B	190	HIS
2	B	271	GLN

5.3.3 RNA [i](#)

There are no RNA molecules in this entry.

5.4 Non-standard residues in protein, DNA, RNA chains [i](#)

There are no non-standard protein/DNA/RNA residues in this entry.

5.5 Carbohydrates [i](#)

There are no carbohydrates in this entry.

5.6 Ligand geometry [i](#)

Of 3 ligands modelled in this entry, 2 are monoatomic - leaving 1 for Mogul analysis.

In the following table, the Counts columns list the number of bonds (or angles) for which Mogul statistics could be retrieved, the number of bonds (or angles) that are observed in the model and the number of bonds (or angles) that are defined in the Chemical Component Dictionary. The Link column lists molecule types, if any, to which the group is linked. The Z score for a bond length (or angle) is the number of standard deviations the observed value is removed from the expected value. A bond length (or angle) with $|Z| > 2$ is considered an outlier worth inspection. RMSZ is the root-mean-square of all Z scores of the bond lengths (or angles).

Mol	Type	Chain	Res	Link	Bond lengths			Bond angles		
					Counts	RMSZ	# Z > 2	Counts	RMSZ	# Z > 2
5	PZ3	B	333	3	50,60,60	2.07	8 (16%)	66,85,85	1.62	10 (15%)

In the following table, the Chirals column lists the number of chiral outliers, the number of chiral centers analysed, the number of these observed in the model and the number defined in the Chemical Component Dictionary. Similar counts are reported in the Torsion and Rings columns. '-' means no outliers of that kind were identified.

Mol	Type	Chain	Res	Link	Chirals	Torsions	Rings
5	PZ3	B	333	3	-	5/33/53/53	0/6/7/7

All (8) bond length outliers are listed below:

Mol	Chain	Res	Type	Atoms	Z	Observed(Å)	Ideal(Å)
5	B	333	PZ3	OAE-SCB	7.00	1.51	1.43
5	B	333	PZ3	OAF-SCB	6.68	1.50	1.43
5	B	333	PZ3	CBO-CAG	5.38	1.54	1.48
5	B	333	PZ3	CBW-NBY	-5.36	1.34	1.43
5	B	333	PZ3	CBR-CBV	-3.51	1.40	1.46
5	B	333	PZ3	SCB-NBZ	3.37	1.68	1.63
5	B	333	PZ3	CBC-CBX	2.96	1.57	1.53
5	B	333	PZ3	CBD-CBU	2.06	1.54	1.51

All (10) bond angle outliers are listed below:

Mol	Chain	Res	Type	Atoms	Z	Observed(°)	Ideal(°)
5	B	333	PZ3	OAF-SCB-OAE	-6.24	109.41	119.52
5	B	333	PZ3	CBE-CBT-CBA	-5.38	112.26	119.17
5	B	333	PZ3	NBG-CAZ-NCA	-3.70	106.76	112.26
5	B	333	PZ3	CBE-CBT-CBW	3.26	127.38	122.40
5	B	333	PZ3	CBM-CBB-NBH	-3.18	106.23	113.05
5	B	333	PZ3	CBS-SCB-NBZ	2.73	112.22	107.36
5	B	333	PZ3	CAA-OBI-CBP	-2.72	111.60	117.51
5	B	333	PZ3	CBD-CBU-CAY	-2.52	126.08	129.46
5	B	333	PZ3	CBQ-OBJ-CBL	-2.40	113.97	118.02
5	B	333	PZ3	OAF-SCB-CBS	2.08	110.67	108.05

There are no chirality outliers.

All (5) torsion outliers are listed below:

Mol	Chain	Res	Type	Atoms
5	B	333	PZ3	CBN-CBC-CBX-CBF

Continued on next page...

Continued from previous page...

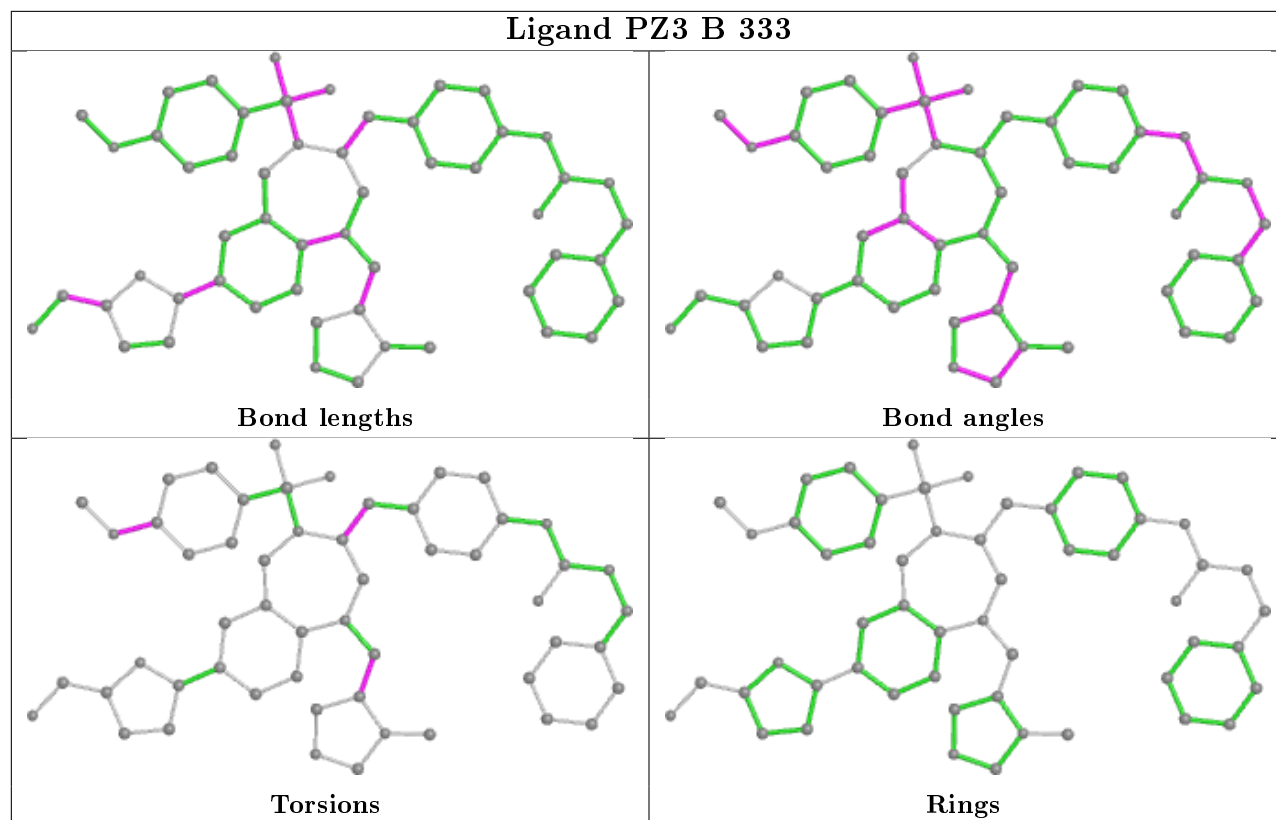
Mol	Chain	Res	Type	Atoms
5	B	333	PZ3	CBN-CBC-CBX-NBZ
5	B	333	PZ3	NBY-CBD-CBU-NCA
5	B	333	PZ3	CAR-CBP-OBI-CAA
5	B	333	PZ3	CAS-CBP-OBI-CAA

There are no ring outliers.

1 monomer is involved in 4 short contacts:

Mol	Chain	Res	Type	Clashes	Symm-Clashes
5	B	333	PZ3	4	0

The following is a two-dimensional graphical depiction of Mogul quality analysis of bond lengths, bond angles, torsion angles, and ring geometry for all instances of the Ligand of Interest. In addition, ligands with molecular weight > 250 and outliers as shown on the validation Tables will also be included. For torsion angles, if less than 5% of the Mogul distribution of torsion angles is within 10 degrees of the torsion angle in question, then that torsion angle is considered an outlier. Any bond that is central to one or more torsion angles identified as an outlier by Mogul will be highlighted in the graph. For rings, the root-mean-square deviation (RMSD) between the ring in question and similar rings identified by Mogul is calculated over all ring torsion angles. If the average RMSD is greater than 60 degrees and the minimal RMSD between the ring in question and any Mogul-identified rings is also greater than 60 degrees, then that ring is considered an outlier. The outliers are highlighted in purple. The color gray indicates Mogul did not find sufficient equivalents in the CSD to analyse the geometry.



5.7 Other polymers [i](#)

There are no such residues in this entry.

5.8 Polymer linkage issues [i](#)

There are no chain breaks in this entry.

6 Fit of model and data ⓘ

6.1 Protein, DNA and RNA chains ⓘ

In the following table, the column labelled ‘#RSRZ> 2’ contains the number (and percentage) of RSRZ outliers, followed by percent RSRZ outliers for the chain as percentile scores relative to all X-ray entries and entries of similar resolution. The OWAB column contains the minimum, median, 95th percentile and maximum values of the occupancy-weighted average B-factor per residue. The column labelled ‘Q< 0.9’ lists the number of (and percentage) of residues with an average occupancy less than 0.9.

Mol	Chain	Analysed	<RSRZ>	#RSRZ>2	OWAB(Å ²)	Q<0.9
1	A	308/332 (92%)	0.38	26 (8%) 11 10	28, 44, 76, 113	0
2	B	324/330 (98%)	0.10	12 (3%) 41 41	24, 38, 68, 89	0
All	All	632/662 (95%)	0.24	38 (6%) 21 20	24, 41, 73, 113	0

All (38) RSRZ outliers are listed below:

Mol	Chain	Res	Type	RSRZ
2	B	331	SER	5.2
1	A	193	PRO	5.2
1	A	19	LEU	5.1
1	A	330	ALA	4.7
1	A	327	MET	4.6
1	A	21	ARG	4.4
2	B	12	SER	4.3
1	A	176	SER	4.2
1	A	194	GLN	4.1
2	B	10	ILE	3.9
1	A	17	LYS	3.9
1	A	243	CYS	3.7
1	A	121	PRO	3.6
2	B	13	ASP	3.6
1	A	18	ARG	3.5
1	A	20	GLU	3.5
2	B	304	GLU	3.4
1	A	241	GLY	3.3
2	B	267	ILE	3.3
1	A	195	PRO	3.0
1	A	40	GLN	2.9
1	A	23	GLN	2.9
2	B	11	LYS	2.8
1	A	269	GLU	2.7

Continued on next page...

Continued from previous page...

Mol	Chain	Res	Type	RSRZ
1	A	328	GLU	2.6
1	A	242	ARG	2.5
1	A	244	GLU	2.5
1	A	168	ASP	2.4
2	B	9	THR	2.4
2	B	285	MET	2.4
1	A	27	LEU	2.4
2	B	81	GLU	2.3
2	B	274	GLU	2.3
2	B	278	PHE	2.2
1	A	240	SER	2.2
1	A	224	ASN	2.1
1	A	79	GLU	2.1
1	A	171	ILE	2.1

6.2 Non-standard residues in protein, DNA, RNA chains [i](#)

There are no non-standard protein/DNA/RNA residues in this entry.

6.3 Carbohydrates [i](#)

There are no carbohydrates in this entry.

6.4 Ligands [i](#)

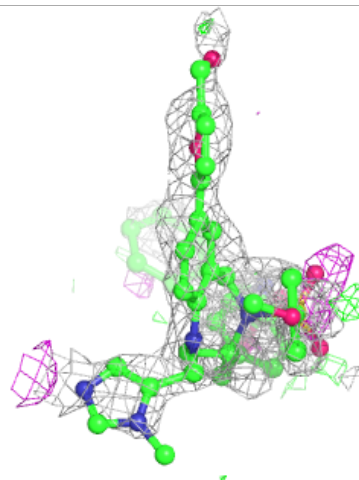
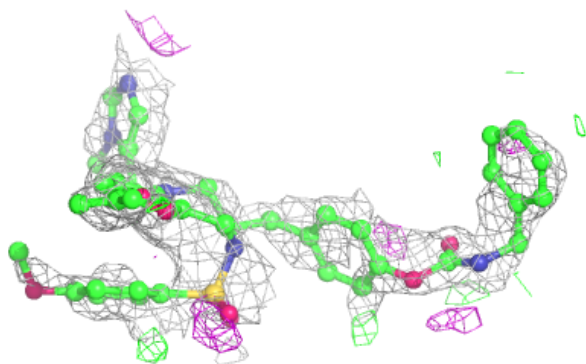
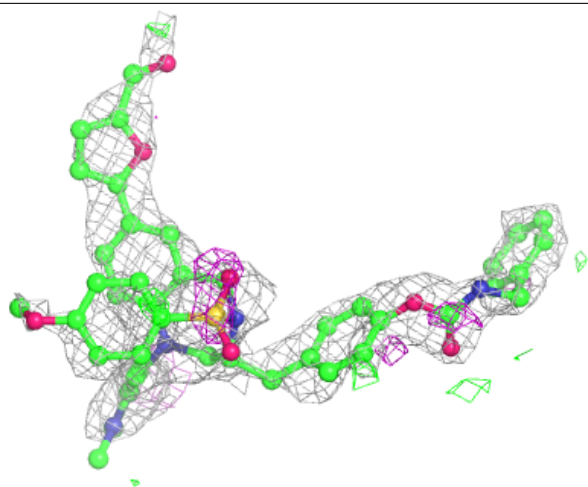
In the following table, the Atoms column lists the number of modelled atoms in the group and the number defined in the chemical component dictionary. The B-factors column lists the minimum, median, 95th percentile and maximum values of B factors of atoms in the group. The column labelled 'Q< 0.9' lists the number of atoms with occupancy less than 0.9.

Mol	Type	Chain	Res	Atoms	RSCC	RSR	B-factors(\AA^2)	Q<0.9
5	PZ3	B	333	54/54	0.73	0.32	84,92,114,125	0
4	CA	B	332	1/1	0.78	0.20	82,82,82,82	0
3	ZN	B	1	1/1	1.00	0.08	50,50,50,50	0

The following is a graphical depiction of the model fit to experimental electron density of all instances of the Ligand of Interest. In addition, ligands with molecular weight > 250 and outliers as shown on the geometry validation Tables will also be included. Each fit is shown from different orientation to approximate a three-dimensional view.

Electron density around PZ3 B 333:

$2mF_o-DF_c$ (at 0.7 rmsd) in gray
 mF_o-DF_c (at 3 rmsd) in purple (negative)
and green (positive)



6.5 Other polymers ⓘ

There are no such residues in this entry.