



# Full wwPDB X-ray Structure Validation Report ⓘ

May 26, 2020 – 11:51 am BST

PDB ID : 4Q08  
Title : Crystal structure of chimeric carbonic anhydrase XII with inhibitor  
Authors : Smirnov, A.; Manakova, E.; Grazulis, S.  
Deposited on : 2014-04-01  
Resolution : 1.07 Å(reported)

This is a Full wwPDB X-ray Structure Validation Report for a publicly released PDB entry.

We welcome your comments at [validation@mail.wwpdb.org](mailto:validation@mail.wwpdb.org)

A user guide is available at

<https://www.wwpdb.org/validation/2017/XrayValidationReportHelp>

with specific help available everywhere you see the ⓘ symbol.

---

The following versions of software and data (see [references ⓘ](#)) were used in the production of this report:

MolProbity : 4.02b-467  
Mogul : 1.8.5 (274361), CSD as541be (2020)  
Xtriage (Phenix) : 1.13  
EDS : 2.11  
buster-report : 1.1.7 (2018)  
Percentile statistics : 20191225.v01 (using entries in the PDB archive December 25th 2019)  
Refmac : 5.8.0158  
CCP4 : 7.0.044 (Gargrove)  
Ideal geometry (proteins) : Engh & Huber (2001)  
Ideal geometry (DNA, RNA) : Parkinson et al. (1996)  
Validation Pipeline (wwPDB-VP) : 2.11

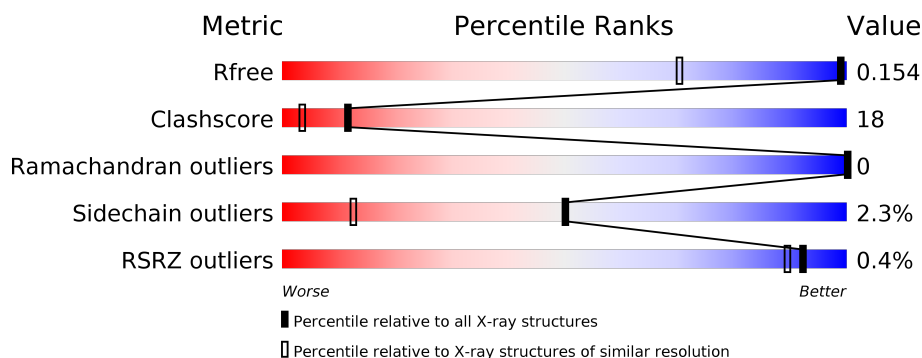
# 1 Overall quality at a glance ⓘ

The following experimental techniques were used to determine the structure:

*X-RAY DIFFRACTION*

The reported resolution of this entry is 1.07 Å.

Percentile scores (ranging between 0-100) for global validation metrics of the entry are shown in the following graphic. The table shows the number of entries on which the scores are based.



Metric	Whole archive (#Entries)	Similar resolution (#Entries, resolution range(Å))
$R_{free}$	130704	1386 (1.12-1.04)
Clashscore	141614	1021 (1.10-1.06)
Ramachandran outliers	138981	1381 (1.12-1.04)
Sidechain outliers	138945	1379 (1.12-1.04)
RSRZ outliers	127900	1359 (1.12-1.04)

The table below summarises the geometric issues observed across the polymeric chains and their fit to the electron density. The red, orange, yellow and green segments on the lower bar indicate the fraction of residues that contain outliers for  $\geq 3$ , 2, 1 and 0 types of geometric quality criteria respectively. A grey segment represents the fraction of residues that are not modelled. The numeric value for each fraction is indicated below the corresponding segment, with a dot representing fractions  $\leq 5\%$ . The upper red bar (where present) indicates the fraction of residues that have poor fit to the electron density. The numeric value is given above the bar.

Mol	Chain	Length	Quality of chain
1	A	260	

The following table lists non-polymeric compounds, carbohydrate monomers and non-standard residues in protein, DNA, RNA chains that are outliers for geometric or electron-density-fit criteria:

Mol	Type	Chain	Res	Chirality	Geometry	Clashes	Electron density
4	BCN	A	303	-	-	X	-
6	V90	A	305[B]	-	-	X	-

## 2 Entry composition

There are 7 unique types of molecules in this entry. The entry contains 2663 atoms, of which 0 are hydrogens and 0 are deuteriums.

In the tables below, the ZeroOcc column contains the number of atoms modelled with zero occupancy, the AltConf column contains the number of residues with at least one atom in alternate conformation and the Trace column contains the number of residues modelled with at most 2 atoms.

- Molecule 1 is a protein called Carbonic anhydrase 2.

Mol	Chain	Residues	Atoms					ZeroOcc	AltConf	Trace
1	A	257	Total	C	N	O	S	0	25	0
			2248	1432	390	424	2			

There are 6 discrepancies between the modelled and reference sequences:

Chain	Residue	Modelled	Actual	Comment	Reference
A	65	SER	ALA	ENGINEERED MUTATION	UNP P00918
A	67	LYS	ASN	ENGINEERED MUTATION	UNP P00918
A	91	THR	ILE	ENGINEERED MUTATION	UNP P00918
A	130	ALA	PHE	ENGINEERED MUTATION	UNP P00918
A	134	SER	VAL	ENGINEERED MUTATION	UNP P00918
A	203	ASN	LEU	ENGINEERED MUTATION	UNP P00918

- Molecule 2 is ZINC ION (three-letter code: ZN) (formula: Zn).

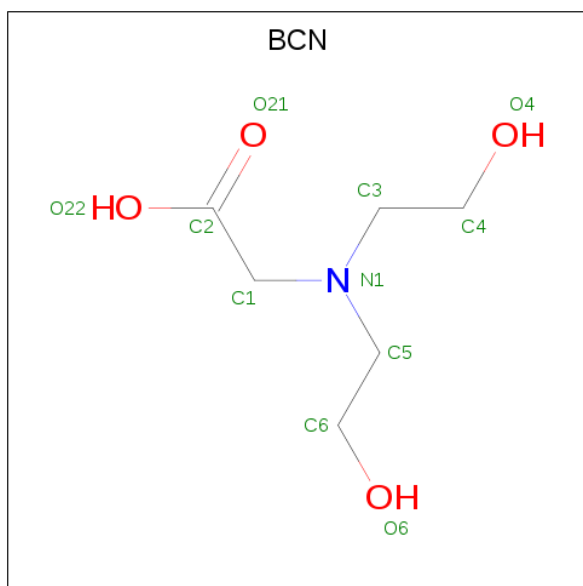
Mol	Chain	Residues	Atoms		ZeroOcc	AltConf
2	A	1	Total	Zn	0	0
			1	1		

- Molecule 3 is DIMETHYL SULFOXIDE (three-letter code: DMS) (formula: C<sub>2</sub>H<sub>6</sub>OS).



Mol	Chain	Residues	Atoms				ZeroOcc	AltConf
3	A	1	Total	C	O	S	0	0
			4	2	1	1		

- Molecule 4 is BICINE (three-letter code: BCN) (formula:  $C_6H_{13}NO_4$ ).



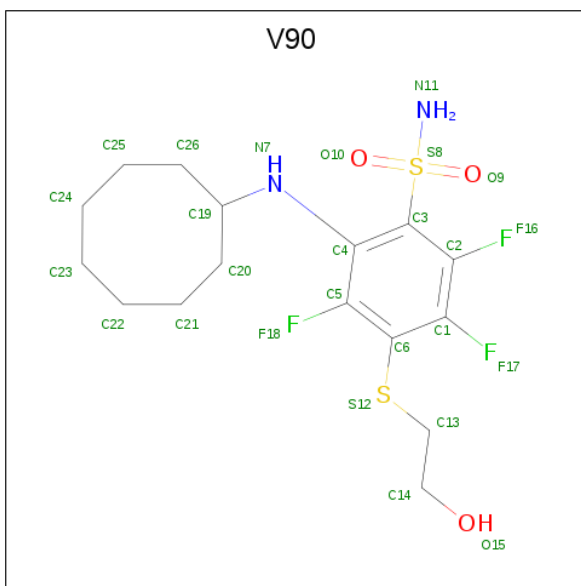
Mol	Chain	Residues	Atoms				ZeroOcc	AltConf
4	A	1	Total	C	N	O	0	0
			11	6	1	4		

- Molecule 5 is 2-(N-MORPHOLINO)-ETHANESULFONIC ACID (three-letter code: MES) (formula:  $C_6H_{13}NO_4S$ ).



Mol	Chain	Residues	Atoms					ZeroOcc	AltConf
5	A	1	Total	C	N	O	S	0	0
			9	6	1	1	1		

- Molecule 6 is 2-(cyclooctylamino)-3,5,6-trifluoro-4-[(2-hydroxyethyl)sulfanyl]benzenesulfonamide (three-letter code: V90) (formula:  $C_{16}H_{23}F_3N_2O_3S_2$ ).



Mol	Chain	Residues	Atoms						ZeroOcc	AltConf
6	A	1	Total	C	F	N	O	S	0	1
			52	32	6	4	6	4		

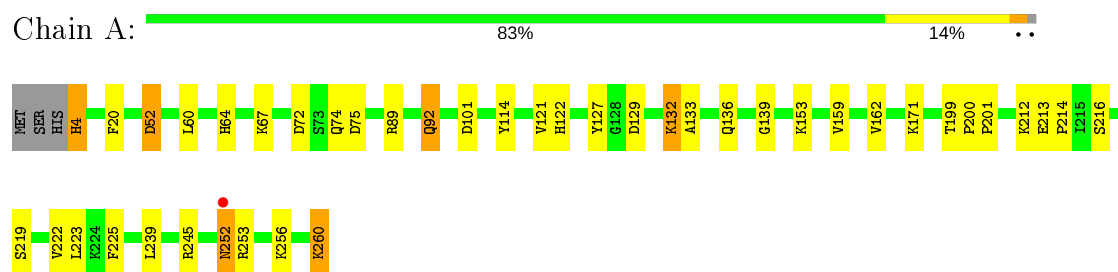
- Molecule 7 is water.

Mol	Chain	Residues	Atoms		ZeroOcc	AltConf
7	A	338	Total 338	O 338	0	0

### 3 Residue-property plots

These plots are drawn for all protein, RNA and DNA chains in the entry. The first graphic for a chain summarises the proportions of the various outlier classes displayed in the second graphic. The second graphic shows the sequence view annotated by issues in geometry and electron density. Residues are color-coded according to the number of geometric quality criteria for which they contain at least one outlier: green = 0, yellow = 1, orange = 2 and red = 3 or more. A red dot above a residue indicates a poor fit to the electron density ( $RSRZ > 2$ ). Stretches of 2 or more consecutive residues without any outlier are shown as a green connector. Residues present in the sample, but not in the model, are shown in grey.

- Molecule 1: Carbonic anhydrase 2



## 4 Data and refinement statistics

Property	Value	Source
Space group	P 1 21 1	Depositor
Cell constants a, b, c, $\alpha$ , $\beta$ , $\gamma$	41.82Å 41.06Å 71.47Å 90.00° 103.56° 90.00°	Depositor
Resolution (Å)	40.65 – 1.07 40.66 – 1.07	Depositor EDS
% Data completeness (in resolution range)	93.6 (40.65-1.07) 93.6 (40.66-1.07)	Depositor EDS
$R_{merge}$	(Not available)	Depositor
$R_{sym}$	0.03	Depositor
$\langle I/\sigma(I) \rangle$ <sup>1</sup>	2.51 (at 1.06Å)	Xtriage
Refinement program	REFMAC	Depositor
R, $R_{free}$	0.128 , 0.156 0.126 , 0.154	Depositor DCC
$R_{free}$ test set	9883 reflections (10.02%)	wwPDB-VP
Wilson B-factor (Å <sup>2</sup> )	9.8	Xtriage
Anisotropy	0.213	Xtriage
Bulk solvent $k_{sol}$ (e/Å <sup>3</sup> ), $B_{sol}$ (Å <sup>2</sup> )	0.38 , 48.8	EDS
L-test for twinning <sup>2</sup>	$\langle  L  \rangle = 0.48$ , $\langle L^2 \rangle = 0.31$	Xtriage
Estimated twinning fraction	No twinning to report.	Xtriage
$F_o, F_c$ correlation	0.98	EDS
Total number of atoms	2663	wwPDB-VP
Average B, all atoms (Å <sup>2</sup> )	14.0	wwPDB-VP

Xtriage's analysis on translational NCS is as follows: *The largest off-origin peak in the Patterson function is 7.92% of the height of the origin peak. No significant pseudotranslation is detected.*

<sup>1</sup>Intensities estimated from amplitudes.

<sup>2</sup>Theoretical values of  $\langle |L| \rangle$ ,  $\langle L^2 \rangle$  for acentric reflections are 0.5, 0.333 respectively for untwinned datasets, and 0.375, 0.2 for perfectly twinned datasets.



## 5 Model quality ⓘ

### 5.1 Standard geometry ⓘ

Bond lengths and bond angles in the following residue types are not validated in this section: V90, DMS, BCN, ZN, MES

The Z score for a bond length (or angle) is the number of standard deviations the observed value is removed from the expected value. A bond length (or angle) with  $|Z| > 5$  is considered an outlier worth inspection. RMSZ is the root-mean-square of all Z scores of the bond lengths (or angles).

Mol	Chain	Bond lengths		Bond angles	
		RMSZ	$\# Z  > 5$	RMSZ	$\# Z  > 5$
1	A	1.08	2/2311 (0.1%)	1.13	8/3129 (0.3%)

All (2) bond length outliers are listed below:

Mol	Chain	Res	Type	Atoms	Z	Observed(Å)	Ideal(Å)
1	A	252	ASN	C-O	5.73	1.34	1.23
1	A	127	TYR	CE2-CZ	5.13	1.45	1.38

All (8) bond angle outliers are listed below:

Mol	Chain	Res	Type	Atoms	Z	Observed(°)	Ideal(°)
1	A	114	TYR	CB-CG-CD2	-5.91	117.45	121.00
1	A	245	ARG	NE-CZ-NH1	5.78	123.19	120.30
1	A	52[A]	ASP	CB-CG-OD1	5.72	123.45	118.30
1	A	52[B]	ASP	CB-CG-OD1	5.72	123.45	118.30
1	A	245	ARG	NE-CZ-NH2	-5.70	117.45	120.30
1	A	74	GLN	O-C-N	-5.66	113.64	122.70
1	A	101	ASP	CB-CG-OD1	5.63	123.37	118.30
1	A	225	PHE	CB-CG-CD1	5.39	124.58	120.80

There are no chirality outliers.

There are no planarity outliers.

### 5.2 Too-close contacts ⓘ

In the following table, the Non-H and H(model) columns list the number of non-hydrogen atoms and hydrogen atoms in the chain respectively. The H(added) column lists the number of hydrogen atoms added and optimized by MolProbity. The Clashes column lists the number of clashes within the asymmetric unit, whereas Symm-Clashes lists symmetry related clashes.

Mol	Chain	Non-H	H(model)	H(added)	Clashes	Symm-Clashes
1	A	2248	0	2183	65	0
2	A	1	0	0	0	0
3	A	4	0	6	0	0
4	A	11	0	12	8	0
5	A	9	0	13	4	0
6	A	52	0	45	19	0
7	A	338	0	0	32	0
All	All	2663	0	2259	81	0

The all-atom clashscore is defined as the number of clashes found per 1000 atoms (including hydrogen atoms). The all-atom clashscore for this structure is 18.

All (81) close contacts within the same asymmetric unit are listed below, sorted by their clash magnitude.

Atom-1	Atom-2	Interatomic distance (Å)	Clash overlap (Å)
6:A:305[B]:V90:H20	6:A:305[B]:V90:H12	1.18	1.14
1:A:199:THR:HG21	6:A:305[A]:V90:H13	1.35	1.03
1:A:4[A]:HIS:HD2	7:A:699:HOH:O	1.41	1.00
6:A:305[B]:V90:H12	6:A:305[B]:V90:C21	2.01	0.91
6:A:305[B]:V90:C25	6:A:305[B]:V90:H20	2.01	0.89
1:A:89[B]:ARG:HD3	7:A:690:HOH:O	1.75	0.87
1:A:4[A]:HIS:CD2	7:A:699:HOH:O	2.21	0.87
1:A:67[B]:LYS:CE	1:A:92[B]:GLN:HE22	1.89	0.85
1:A:212:LYS:HE3	7:A:586:HOH:O	1.77	0.84
1:A:199:THR:HG21	6:A:305[A]:V90:C25	2.07	0.83
1:A:121:VAL:HG11	6:A:305[B]:V90:H10	1.58	0.83
6:A:305[B]:V90:C14	7:A:663:HOH:O	2.25	0.82
1:A:67[B]:LYS:HD3	1:A:92[B]:GLN:NE2	1.94	0.81
1:A:67[B]:LYS:NZ	1:A:92[B]:GLN:HE22	1.81	0.78
1:A:239[A]:LEU:HD11	7:A:556:HOH:O	1.83	0.77
1:A:223[B]:LEU:CD1	7:A:628:HOH:O	2.33	0.77
1:A:162[A]:VAL:HG21	7:A:659:HOH:O	1.85	0.76
5:A:304:MES:C5	5:A:304:MES:S	2.74	0.76
1:A:121:VAL:HG11	6:A:305[B]:V90:C26	2.16	0.75
5:A:304:MES:H52	5:A:304:MES:S	2.27	0.74
1:A:75[B]:ASP:HB2	7:A:651:HOH:O	1.86	0.73
6:A:305[B]:V90:H17	7:A:680:HOH:O	1.88	0.72
1:A:213[A]:GLU:HA	4:A:303:BCN:H61	1.73	0.70
6:A:305[B]:V90:H3	7:A:663:HOH:O	1.87	0.70
1:A:171[B]:LYS:HE2	7:A:715:HOH:O	1.94	0.68
1:A:136:GLN:NE2	7:A:723:HOH:O	2.24	0.67
1:A:67[B]:LYS:CD	1:A:92[B]:GLN:NE2	2.59	0.66

*Continued on next page...*

*Continued from previous page...*

Atom-1	Atom-2	Interatomic distance (Å)	Clash overlap (Å)
1:A:213[B]:GLU:HA	4:A:303:BCN:H61	1.78	0.65
1:A:67[B]:LYS:CE	1:A:92[B]:GLN:NE2	2.58	0.65
1:A:92[B]:GLN:NE2	7:A:717:HOH:O	2.30	0.63
1:A:60[B]:LEU:HD23	7:A:485:HOH:O	2.00	0.62
1:A:60[B]:LEU:HD12	1:A:60[B]:LEU:O	2.00	0.62
1:A:253:ARG:N	7:A:707:HOH:O	2.33	0.62
1:A:219:SER:O	1:A:223[B]:LEU:HD13	2.01	0.61
1:A:260:LYS:HD3	1:A:260:LYS:N	2.12	0.60
4:A:303:BCN:H11	7:A:452:HOH:O	2.03	0.59
6:A:305[B]:V90:H23	6:A:305[B]:V90:F18	1.93	0.58
1:A:214[B]:PRO:HD2	4:A:303:BCN:H12	1.89	0.54
1:A:171[B]:LYS:CE	7:A:715:HOH:O	2.55	0.53
1:A:89[A]:ARG:NH2	7:A:591:HOH:O	2.34	0.53
1:A:214[A]:PRO:CD	4:A:303:BCN:H12	2.39	0.52
1:A:214[A]:PRO:HD2	4:A:303:BCN:H52	1.92	0.52
5:A:304:MES:H51	5:A:304:MES:S	2.50	0.52
1:A:223[B]:LEU:HD11	7:A:628:HOH:O	2.06	0.51
5:A:304:MES:H71	7:A:450:HOH:O	2.10	0.51
1:A:60[B]:LEU:C	1:A:60[B]:LEU:HD12	2.33	0.49
1:A:75[B]:ASP:O	1:A:75[B]:ASP:CG	2.51	0.49
1:A:222[B]:VAL:HG23	1:A:223[B]:LEU:HD12	1.94	0.48
1:A:239[B]:LEU:HD12	1:A:239[B]:LEU:N	2.28	0.48
1:A:256:LYS:HE3	7:A:708:HOH:O	2.14	0.48
1:A:133:ALA:O	1:A:139:GLY:HA3	2.13	0.48
1:A:4[B]:HIS:HD2	7:A:685:HOH:O	1.96	0.47
6:A:305[A]:V90:H17	6:A:305[A]:V90:H9	1.96	0.47
6:A:305[A]:V90:H22	6:A:305[A]:V90:C5	2.44	0.47
1:A:201:PRO:HD2	6:A:305[A]:V90:H4	1.96	0.47
1:A:75[B]:ASP:CB	7:A:651:HOH:O	2.54	0.47
1:A:159:VAL:O	1:A:162[A]:VAL:HG12	2.16	0.46
1:A:89[A]:ARG:NH1	7:A:591:HOH:O	2.34	0.46
1:A:252:ASN:C	7:A:707:HOH:O	2.53	0.46
1:A:64:HIS:CB	6:A:305[A]:V90:H15	2.46	0.45
1:A:75[B]:ASP:OD1	1:A:75[B]:ASP:C	2.53	0.45
1:A:72:ASP:OD1	7:A:497:HOH:O	2.21	0.45
1:A:89[A]:ARG:NH2	7:A:612:HOH:O	2.48	0.45
1:A:129:ASP:OD1	1:A:132[A]:LYS:HE2	2.17	0.44
1:A:20:PHE:CE2	1:A:200:PRO:HB3	2.52	0.44
1:A:75[B]:ASP:OD1	1:A:75[B]:ASP:O	2.36	0.43
4:A:303:BCN:H31	4:A:303:BCN:H62	1.26	0.43
1:A:162[A]:VAL:CG2	7:A:659:HOH:O	2.56	0.43

*Continued on next page...*

Continued from previous page...

Atom-1	Atom-2	Interatomic distance (Å)	Clash overlap (Å)
1:A:153:LYS:HB2	1:A:216[A]:SER:O	2.19	0.43
1:A:199:THR:CG2	6:A:305[A]:V90:C25	2.91	0.42
1:A:239[B]:LEU:HD23	7:A:513:HOH:O	2.18	0.42
6:A:305[B]:V90:H4	7:A:663:HOH:O	2.06	0.42
1:A:239[B]:LEU:CD2	7:A:556:HOH:O	2.67	0.42
1:A:214[B]:PRO:CD	4:A:303:BCN:H12	2.50	0.41
1:A:219:SER:HA	1:A:222[B]:VAL:HG22	2.03	0.41
1:A:67[B]:LYS:HE2	1:A:92[B]:GLN:HE22	1.79	0.40
1:A:222[B]:VAL:HG23	1:A:223[B]:LEU:CD1	2.52	0.40
1:A:89[A]:ARG:O	1:A:122:HIS:HA	2.21	0.40
1:A:121:VAL:HG21	6:A:305[B]:V90:H10	2.03	0.40
1:A:239[B]:LEU:H	1:A:239[B]:LEU:HD12	1.86	0.40
1:A:64:HIS:HB3	6:A:305[A]:V90:H15	2.04	0.40

There are no symmetry-related clashes.

## 5.3 Torsion angles ⓘ

### 5.3.1 Protein backbone ⓘ

In the following table, the Percentiles column shows the percent Ramachandran outliers of the chain as a percentile score with respect to all X-ray entries followed by that with respect to entries of similar resolution.

The Analysed column shows the number of residues for which the backbone conformation was analysed, and the total number of residues.

Mol	Chain	Analysed	Favoured	Allowed	Outliers	Percentiles	
1	A	279/260 (107%)	265 (95%)	14 (5%)	0	100	100

There are no Ramachandran outliers to report.

### 5.3.2 Protein sidechains ⓘ

In the following table, the Percentiles column shows the percent sidechain outliers of the chain as a percentile score with respect to all X-ray entries followed by that with respect to entries of similar resolution.

The Analysed column shows the number of residues for which the sidechain conformation was analysed, and the total number of residues.

Mol	Chain	Analysed	Rotameric	Outliers	Percentiles
1	A	247/225 (110%)	238 (96%)	9 (4%)	35 4

All (9) residues with a non-rotameric sidechain are listed below:

Mol	Chain	Res	Type
1	A	4[A]	HIS
1	A	4[B]	HIS
1	A	52[A]	ASP
1	A	52[B]	ASP
1	A	92[A]	GLN
1	A	92[B]	GLN
1	A	132[A]	LYS
1	A	132[B]	LYS
1	A	260	LYS

Some sidechains can be flipped to improve hydrogen bonding and reduce clashes. All (1) such sidechains are listed below:

Mol	Chain	Res	Type
1	A	103	GLN

### 5.3.3 RNA ⓘ

There are no RNA molecules in this entry.

## 5.4 Non-standard residues in protein, DNA, RNA chains ⓘ

There are no non-standard protein/DNA/RNA residues in this entry.

## 5.5 Carbohydrates ⓘ

There are no carbohydrates in this entry.

## 5.6 Ligand geometry ⓘ

Of 6 ligands modelled in this entry, 1 is monoatomic - leaving 5 for Mogul analysis.

In the following table, the Counts columns list the number of bonds (or angles) for which Mogul statistics could be retrieved, the number of bonds (or angles) that are observed in the model and the number of bonds (or angles) that are defined in the Chemical Component Dictionary. The Link column lists molecule types, if any, to which the group is linked. The Z score for a bond

length (or angle) is the number of standard deviations the observed value is removed from the expected value. A bond length (or angle) with  $|Z| > 2$  is considered an outlier worth inspection. RMSZ is the root-mean-square of all Z scores of the bond lengths (or angles).

Mol	Type	Chain	Res	Link	Bond lengths			Bond angles		
					Counts	RMSZ	# Z  > 2	Counts	RMSZ	# Z  > 2
4	BCN	A	303	-	7,10,10	0.62	0	8,11,11	2.43	4 (50%)
3	DMS	A	302	-	3,3,3	0.56	0	3,3,3	0.34	0
6	V90	A	305[A]	2	26,27,27	1.40	4 (15%)	32,38,38	1.58	6 (18%)
6	V90	A	305[B]	2	26,27,27	2.39	3 (11%)	32,38,38	2.52	6 (18%)
5	MES	A	304	-	8,9,12	2.48	5 (62%)	9,10,16	4.08	4 (44%)

In the following table, the Chirals column lists the number of chiral outliers, the number of chiral centers analysed, the number of these observed in the model and the number defined in the Chemical Component Dictionary. Similar counts are reported in the Torsion and Rings columns. '-' means no outliers of that kind were identified.

Mol	Type	Chain	Res	Link	Chirals	Torsions	Rings
4	BCN	A	303	-	-	4/8/10/10	-
6	V90	A	305[B]	2	-	5/14/24/24	0/2/2/2
6	V90	A	305[A]	2	-	6/14/24/24	0/2/2/2
5	MES	A	304	-	-	1/3/11/14	0/1/1/1

All (12) bond length outliers are listed below:

Mol	Chain	Res	Type	Atoms	Z	Observed(Å)	Ideal(Å)
6	A	305[B]	V90	S8-N11	8.36	1.76	1.60
6	A	305[B]	V90	O9-S8	5.61	1.54	1.43
6	A	305[B]	V90	O10-S8	5.56	1.54	1.43
5	A	304	MES	C7-N4	3.86	1.56	1.47
6	A	305[A]	V90	C6-C1	3.75	1.44	1.39
5	A	304	MES	C8-S	-3.50	1.68	1.80
5	A	304	MES	C3-N4	2.73	1.54	1.46
5	A	304	MES	C5-N4	2.50	1.53	1.46
6	A	305[A]	V90	C2-C3	-2.29	1.35	1.39
6	A	305[A]	V90	C6-C5	2.23	1.42	1.39
6	A	305[A]	V90	C26-C19	2.18	1.55	1.52
5	A	304	MES	O1-C6	2.10	1.51	1.42

All (20) bond angle outliers are listed below:

Mol	Chain	Res	Type	Atoms	Z	Observed(°)	Ideal(°)
6	A	305[B]	V90	O9-S8-O10	-10.23	101.94	118.76

*Continued on next page...*

*Continued from previous page...*

Mol	Chain	Res	Type	Atoms	Z	Observed(°)	Ideal(°)
5	A	304	MES	O1-C2-C3	8.50	130.50	111.80
5	A	304	MES	C6-C5-N4	6.99	120.70	110.10
6	A	305[B]	V90	C3-S8-N11	4.72	116.99	108.26
6	A	305[B]	V90	O10-S8-C3	4.70	114.28	107.30
4	A	303	BCN	C4-C3-N1	-4.15	98.48	113.40
6	A	305[A]	V90	F18-C5-C6	-3.92	114.63	119.86
5	A	304	MES	C7-N4-C5	3.54	120.29	111.23
6	A	305[B]	V90	O9-S8-C3	3.49	112.48	107.30
4	A	303	BCN	C1-N1-C5	3.49	118.65	111.29
4	A	303	BCN	C6-C5-N1	-3.21	101.87	113.40
6	A	305[A]	V90	C25-C26-C19	-2.81	105.30	116.21
5	A	304	MES	C5-N4-C3	2.79	115.11	108.83
6	A	305[B]	V90	C13-S12-C6	-2.69	93.44	101.90
6	A	305[A]	V90	F16-C2-C1	-2.46	114.14	119.27
6	A	305[A]	V90	O10-S8-C3	-2.40	103.73	107.30
6	A	305[B]	V90	C1-C6-C5	2.20	119.96	116.18
4	A	303	BCN	C2-C1-N1	2.11	116.48	113.48
6	A	305[A]	V90	C1-C2-C3	2.05	124.34	121.74
6	A	305[A]	V90	C21-C22-C23	-2.02	106.93	117.47

There are no chirality outliers.

All (16) torsion outliers are listed below:

Mol	Chain	Res	Type	Atoms
6	A	305[B]	V90	C4-C3-S8-N11
6	A	305[B]	V90	C2-C3-S8-N11
6	A	305[A]	V90	S12-C13-C14-O15
6	A	305[A]	V90	C4-C3-S8-N11
6	A	305[A]	V90	C20-C19-N7-C4
4	A	303	BCN	C6-C5-N1-C3
5	A	304	MES	C8-C7-N4-C5
6	A	305[B]	V90	C4-C3-S8-O9
4	A	303	BCN	N1-C5-C6-O6
6	A	305[B]	V90	S12-C13-C14-O15
6	A	305[B]	V90	C2-C3-S8-O9
4	A	303	BCN	C4-C3-N1-C5
4	A	303	BCN	C4-C3-N1-C1
6	A	305[A]	V90	C4-C3-S8-O9
6	A	305[A]	V90	C2-C3-S8-N11
6	A	305[A]	V90	C3-C4-N7-C19

There are no ring outliers.

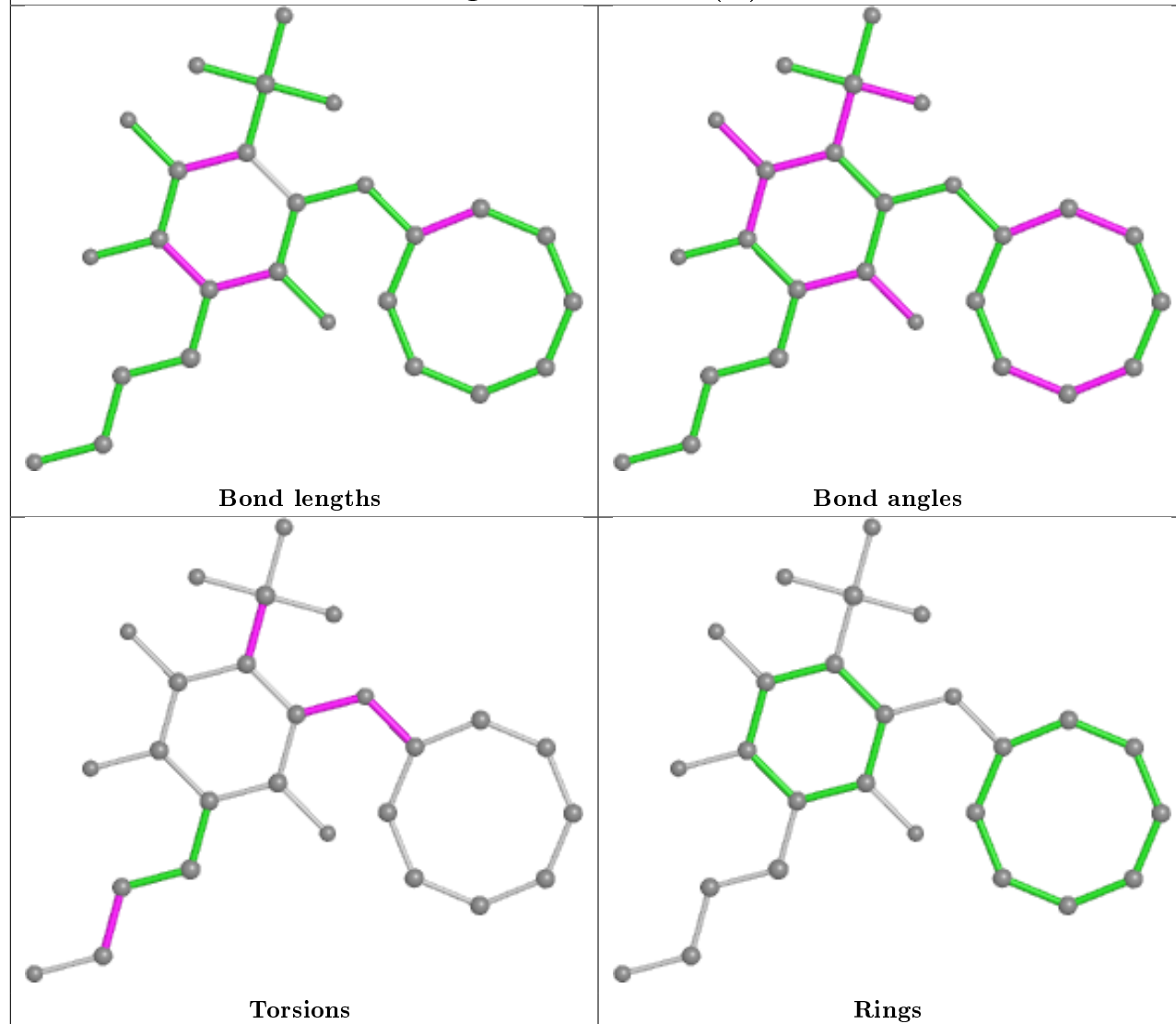
4 monomers are involved in 31 short contacts:

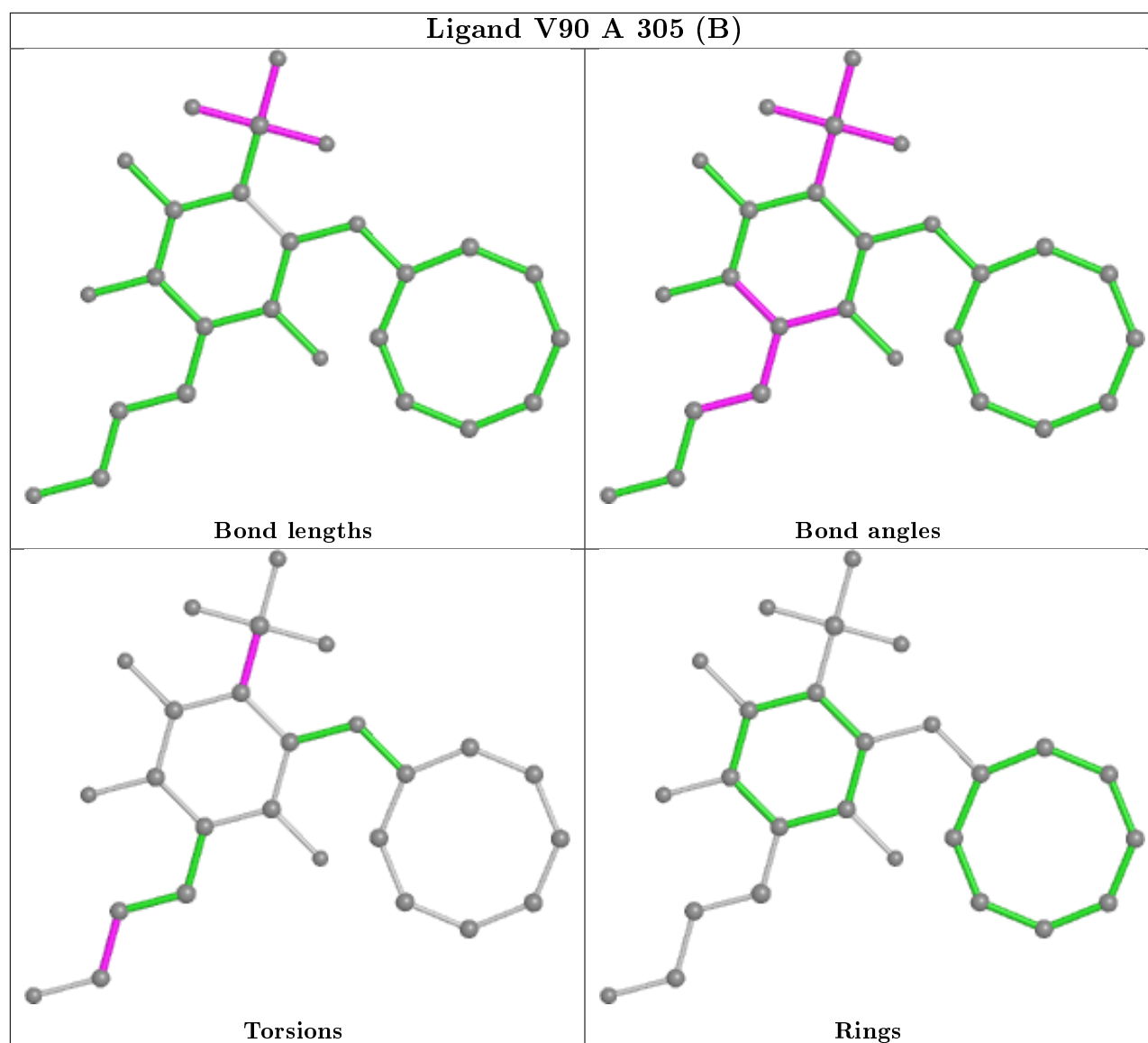
Mol	Chain	Res	Type	Clashes	Symm-Clashes
4	A	303	BCN	8	0
6	A	305[A]	V90	8	0
6	A	305[B]	V90	11	0
5	A	304	MES	4	0

The following is a two-dimensional graphical depiction of Mogul quality analysis of bond lengths, bond angles, torsion angles, and ring geometry for all instances of the Ligand of Interest. In addition, ligands with molecular weight > 250 and outliers as shown on the validation Tables will also be included. For torsion angles, if less than 5% of the Mogul distribution of torsion angles is within 10 degrees of the torsion angle in question, then that torsion angle is considered an outlier. Any bond that is central to one or more torsion angles identified as an outlier by Mogul will be highlighted in the graph. For rings, the root-mean-square deviation (RMSD) between the ring in question and similar rings identified by Mogul is calculated over all ring torsion angles. If the average RMSD is greater than 60 degrees and the minimal RMSD between the ring in question and any Mogul-identified rings is also greater than 60 degrees, then that ring is considered an outlier. The outliers are highlighted in purple. The color gray indicates Mogul did not find sufficient equivalents in the CSD to analyse the geometry.



## Ligand V90 A 305 (A)





## 5.7 Other polymers [i](#)

There are no such residues in this entry.

## 5.8 Polymer linkage issues [i](#)

There are no chain breaks in this entry.

## 6 Fit of model and data [i](#)

### 6.1 Protein, DNA and RNA chains [i](#)

In the following table, the column labelled ‘#RSRZ> 2’ contains the number (and percentage) of RSRZ outliers, followed by percent RSRZ outliers for the chain as percentile scores relative to all X-ray entries and entries of similar resolution. The OWAB column contains the minimum, median, 95<sup>th</sup> percentile and maximum values of the occupancy-weighted average B-factor per residue. The column labelled ‘Q< 0.9’ lists the number of (and percentage) of residues with an average occupancy less than 0.9.

Mol	Chain	Analysed	<RSRZ>	#RSRZ>2	OWAB(Å <sup>2</sup> )	Q<0.9
1	A	257/260 (98%)	-0.20	1 (0%) 92 89	6, 11, 22, 50	0

All (1) RSRZ outliers are listed below:

Mol	Chain	Res	Type	RSRZ
1	A	252	ASN	3.9

### 6.2 Non-standard residues in protein, DNA, RNA chains [i](#)

There are no non-standard protein/DNA/RNA residues in this entry.

### 6.3 Carbohydrates [i](#)

There are no carbohydrates in this entry.

### 6.4 Ligands [i](#)

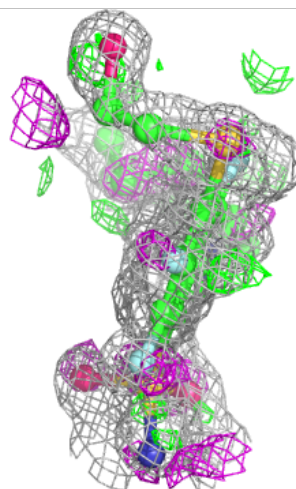
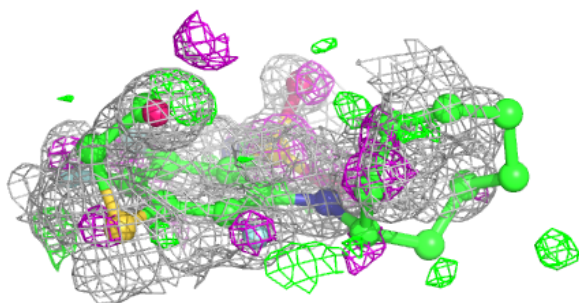
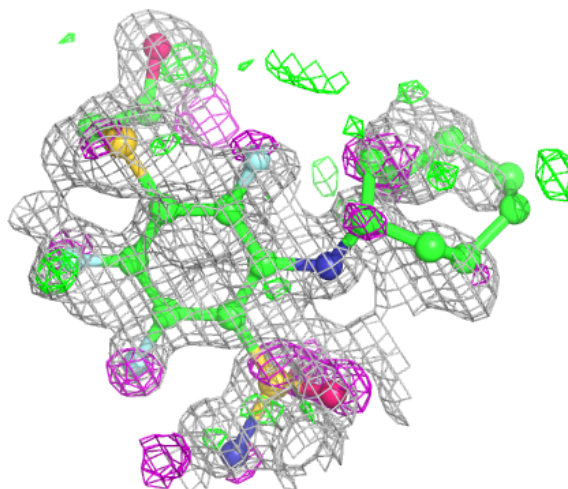
In the following table, the Atoms column lists the number of modelled atoms in the group and the number defined in the chemical component dictionary. The B-factors column lists the minimum, median, 95<sup>th</sup> percentile and maximum values of B factors of atoms in the group. The column labelled ‘Q< 0.9’ lists the number of atoms with occupancy less than 0.9.

Mol	Type	Chain	Res	Atoms	RSCC	RSR	B-factors(Å <sup>2</sup> )	Q<0.9
5	MES	A	304	9/12	0.76	0.20	21,25,68,91	0
4	BCN	A	303	11/11	0.88	0.35	23,34,58,104	0
6	V90	A	305[B]	26/26	0.94	0.14	8,14,23,28	26
6	V90	A	305[A]	26/26	0.94	0.14	4,7,24,39	26
3	DMS	A	302	4/4	0.98	0.15	14,16,17,22	0
2	ZN	A	301	1/1	1.00	0.04	6,6,6,6	0

The following is a graphical depiction of the model fit to experimental electron density of all instances of the Ligand of Interest. In addition, ligands with molecular weight > 250 and outliers as shown on the geometry validation Tables will also be included. Each fit is shown from different orientation to approximate a three-dimensional view.

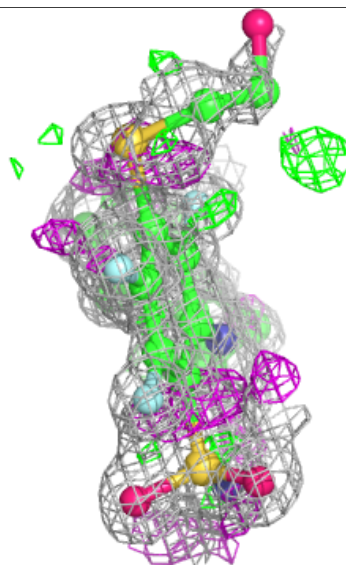
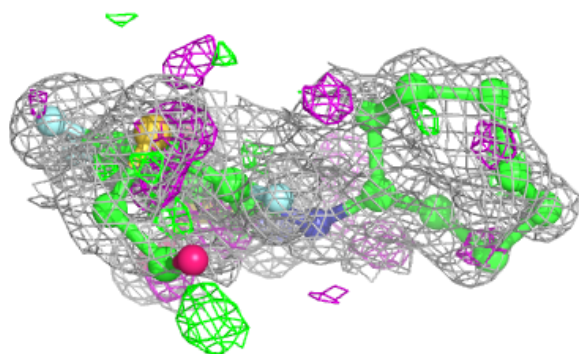
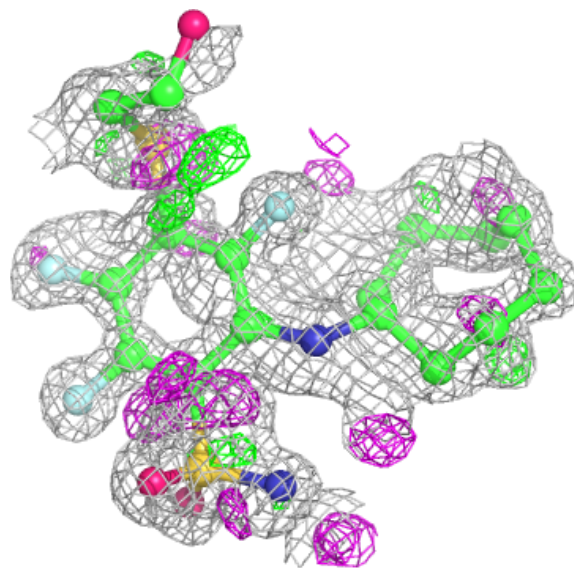
**Electron density around V90 A 305 (B):**

$2mF_o-DF_c$  (at 0.7 rmsd) in gray  
 $mF_o-DF_c$  (at 3 rmsd) in purple (negative)  
and green (positive)



**Electron density around V90 A 305 (A):**

2mF<sub>o</sub>-DF<sub>c</sub> (at 0.7 rmsd) in gray  
mF<sub>o</sub>-DF<sub>c</sub> (at 3 rmsd) in purple (negative)  
and green (positive)



## 6.5 Other polymers ⓘ

There are no such residues in this entry.