



Full wwPDB X-ray Structure Validation Report ⓘ

Nov 8, 2022 – 04:11 pm GMT

PDB ID : 7Q1N
Title : Crystal structure of human butyrylcholinesterase in complex with N-[(2R)-3-[(cyclohexylmethyl)amino]-2-hydroxypropyl]-2,2-diphenylacetamide
Authors : Brazzolotto, X.; Panek, D.; Pasička, A.; Malawska, B.; Nachon, F.
Deposited on : 2021-10-20
Resolution : 2.35 Å(reported)

This is a Full wwPDB X-ray Structure Validation Report for a publicly released PDB entry.

We welcome your comments at validation@mail.wwpdb.org

A user guide is available at

<https://www.wwpdb.org/validation/2017/XrayValidationReportHelp>

with specific help available everywhere you see the ⓘ symbol.

The types of validation reports are described at

<http://www.wwpdb.org/validation/2017/FAQs#types>.

The following versions of software and data (see [references ⓘ](#)) were used in the production of this report:

MolProbity	:	4.02b-467
Mogul	:	1.8.4, CSD as541be (2020)
Xtriage (Phenix)	:	1.13
EDS	:	2.31.2
buster-report	:	1.1.7 (2018)
Percentile statistics	:	20191225.v01 (using entries in the PDB archive December 25th 2019)
Refmac	:	5.8.0267
CCP4	:	7.1.010 (Gargrove)
Ideal geometry (proteins)	:	Engh & Huber (2001)
Ideal geometry (DNA, RNA)	:	Parkinson et al. (1996)
Validation Pipeline (wwPDB-VP)	:	2.31.2

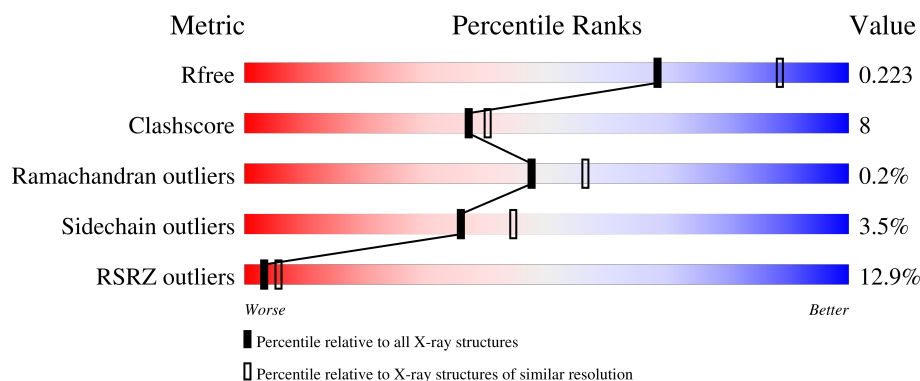
1 Overall quality at a glance

The following experimental techniques were used to determine the structure:

X-RAY DIFFRACTION

The reported resolution of this entry is 2.35 Å.

Percentile scores (ranging between 0-100) for global validation metrics of the entry are shown in the following graphic. The table shows the number of entries on which the scores are based.



Metric	Whole archive (#Entries)	Similar resolution (#Entries, resolution range(Å))
R_{free}	130704	1164 (2.36-2.36)
Clashscore	141614	1232 (2.36-2.36)
Ramachandran outliers	138981	1211 (2.36-2.36)
Sidechain outliers	138945	1212 (2.36-2.36)
RSRZ outliers	127900	1150 (2.36-2.36)

The table below summarises the geometric issues observed across the polymeric chains and their fit to the electron density. The red, orange, yellow and green segments of the lower bar indicate the fraction of residues that contain outliers for ≥ 3 , 2, 1 and 0 types of geometric quality criteria respectively. A grey segment represents the fraction of residues that are not modelled. The numeric value for each fraction is indicated below the corresponding segment, with a dot representing fractions $\leq 5\%$. The upper red bar (where present) indicates the fraction of residues that have poor fit to the electron density. The numeric value is given above the bar.

Mol	Chain	Length	Quality of chain
1	A	529	<div> <div>13%</div> <div>81%</div> <div>17%</div> </div>
2	B	2	<div>100%</div>
3	C	3	<div>67%</div> <div>33%</div>
3	D	3	<div>67%</div> <div>33%</div>
3	E	3	<div>67%</div> <div>33%</div>

The following table lists non-polymeric compounds, carbohydrate monomers and non-standard residues in protein, DNA, RNA chains that are outliers for geometric or electron-density-fit criteria:

Mol	Type	Chain	Res	Chirality	Geometry	Clashes	Electron density
2	FUC	B	2	-	-	-	X
3	FUC	C	3	-	-	-	X

2 Entry composition

There are 11 unique types of molecules in this entry. The entry contains 4646 atoms, of which 0 are hydrogens and 0 are deuteriums.

In the tables below, the ZeroOcc column contains the number of atoms modelled with zero occupancy, the AltConf column contains the number of residues with at least one atom in alternate conformation and the Trace column contains the number of residues modelled with at most 2 atoms.

- Molecule 1 is a protein called Cholinesterase.

Mol	Chain	Residues	Atoms					ZeroOcc	AltConf	Trace
			Total	C	N	O	S			
1	A	527	4255	2745	718	776	16	0	7	0

There are 4 discrepancies between the modelled and reference sequences:

Chain	Residue	Modelled	Actual	Comment	Reference
A	17	GLN	ASN	engineered mutation	UNP P06276
A	455	GLN	ASN	engineered mutation	UNP P06276
A	481	GLN	ASN	engineered mutation	UNP P06276
A	486	GLN	ASN	engineered mutation	UNP P06276

- Molecule 2 is an oligosaccharide called alpha-L-fucopyranose-(1-6)-2-acetamido-2-deoxy-beta-D-glucopyranose.



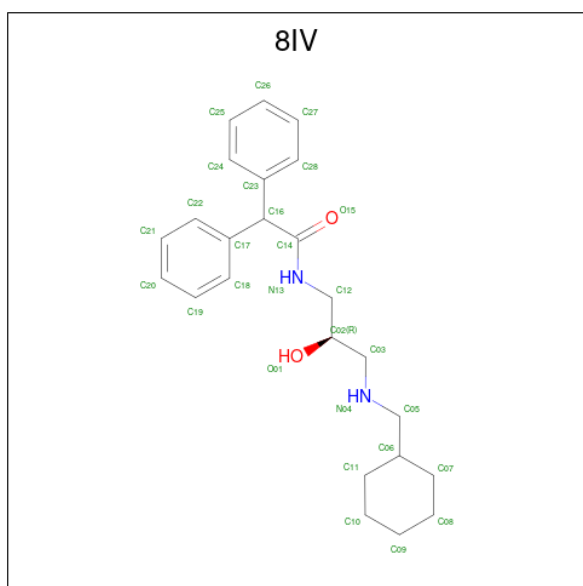
Mol	Chain	Residues	Atoms				ZeroOcc	AltConf	Trace
			Total	C	N	O			
2	B	2	24	14	1	9	0	0	0

- Molecule 3 is an oligosaccharide called 2-acetamido-2-deoxy-beta-D-glucopyranose-(1-4)-[alpha-L-fucopyranose-(1-6)]2-acetamido-2-deoxy-beta-D-glucopyranose.



Mol	Chain	Residues	Atoms				ZeroOcc	AltConf	Trace
3	C	3	Total	C	N	O	0	0	0
			38	22	2	14			
3	D	3	Total	C	N	O	0	0	0
			38	22	2	14			
3	E	3	Total	C	N	O	0	0	0
			38	22	2	14			

- Molecule 4 is N-[(2R)-3-(cyclohexylmethylamino)-2-oxidanyl-propyl]-2,2-diphenyl-ethanamide (three-letter code: 8IV) (formula: $C_{24}H_{32}N_2O_2$) (labeled as "Ligand of Interest" by depositor).



Mol	Chain	Residues	Atoms				ZeroOcc	AltConf
4	A	1	Total	C	N	O	0	0
			28	24	2	2		

- Molecule 5 is 2-acetamido-2-deoxy-beta-D-glucopyranose (three-letter code: NAG) (formula: $C_8H_{15}NO_6$).



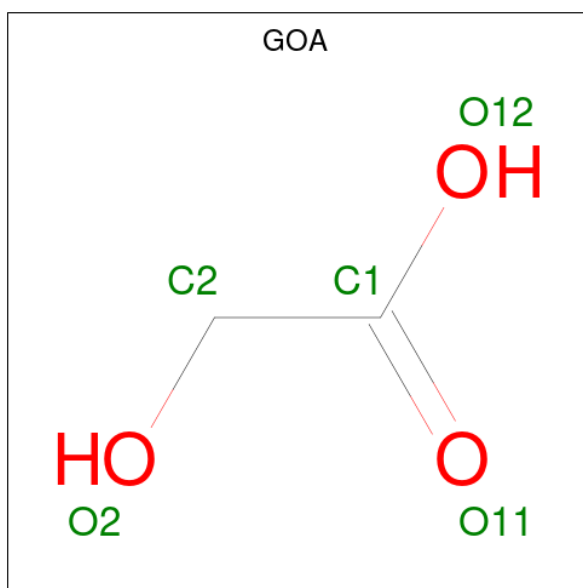
Mol	Chain	Residues	Atoms				ZeroOcc	AltConf
5	A	1	Total	C	N	O	0	0
			14	8	1	5		
5	A	1	Total	C	N	O	0	0
			14	8	1	5		

- Molecule 6 is GLYCEROL (three-letter code: GOL) (formula: $C_3H_8O_3$).



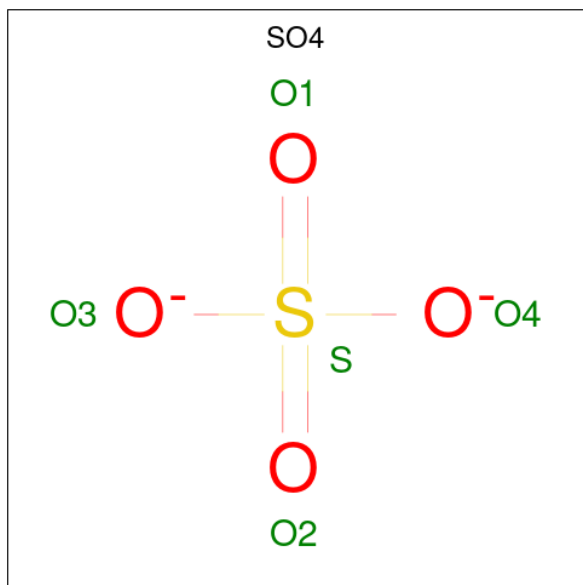
Mol	Chain	Residues	Atoms			ZeroOcc	AltConf
6	A	1	Total	C	O	0	0
			6	3	3		
6	A	1	Total	C	O	0	0
			6	3	3		

- Molecule 7 is GLYCOLIC ACID (three-letter code: GOA) (formula: $C_2H_4O_3$).



Mol	Chain	Residues	Atoms			ZeroOcc	AltConf
7	A	1	Total	C	O	0	0
			5	2	3		

- Molecule 8 is SULFATE ION (three-letter code: SO4) (formula: O_4S).



Mol	Chain	Residues	Atoms			ZeroOcc	AltConf
8	A	1	Total	O	S	0	0
			5	4	1		
8	A	1	Total	O	S	0	0
			5	4	1		

Continued on next page...

Continued from previous page...

Mol	Chain	Residues	Atoms			ZeroOcc	AltConf
8	A	1	Total	O	S	0	0
			5	4	1		

- Molecule 9 is CHLORIDE ION (three-letter code: CL) (formula: Cl).

Mol	Chain	Residues	Atoms		ZeroOcc	AltConf
9	A	13	Total	Cl	0	1
			13	13		

- Molecule 10 is SODIUM ION (three-letter code: NA) (formula: Na).

Mol	Chain	Residues	Atoms		ZeroOcc	AltConf
10	A	2	Total	Na	0	0
			2	2		

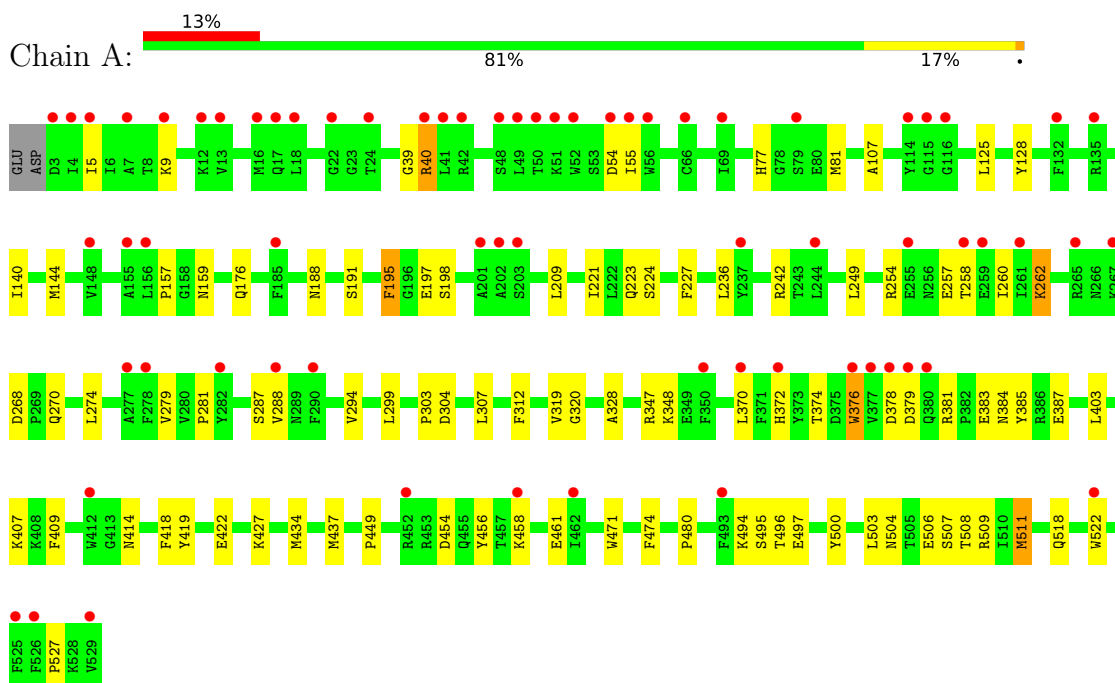
- Molecule 11 is water.

Mol	Chain	Residues	Atoms		ZeroOcc	AltConf
11	A	150	Total	O	0	0
			150	150		

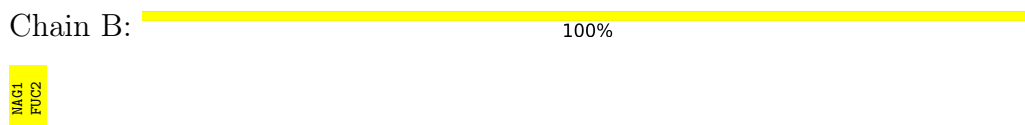
3 Residue-property plots

These plots are drawn for all protein, RNA, DNA and oligosaccharide chains in the entry. The first graphic for a chain summarises the proportions of the various outlier classes displayed in the second graphic. The second graphic shows the sequence view annotated by issues in geometry and electron density. Residues are color-coded according to the number of geometric quality criteria for which they contain at least one outlier: green = 0, yellow = 1, orange = 2 and red = 3 or more. A red dot above a residue indicates a poor fit to the electron density ($RSRZ > 2$). Stretches of 2 or more consecutive residues without any outlier are shown as a green connector. Residues present in the sample, but not in the model, are shown in grey.

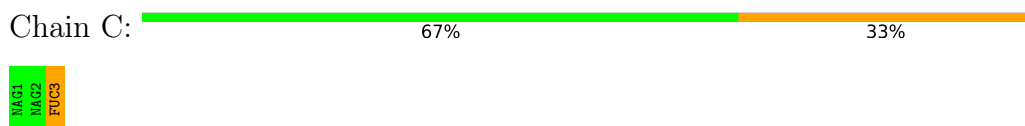
- Molecule 1: Cholinesterase



- Molecule 2: alpha-L-fucopyranose-(1-6)-2-acetamido-2-deoxy-beta-D-glucopyranose



- Molecule 3: 2-acetamido-2-deoxy-beta-D-glucopyranose-(1-4)-[alpha-L-fucopyranose-(1-6)]2-acetamido-2-deoxy-beta-D-glucopyranose



- Molecule 3: 2-acetamido-2-deoxy-beta-D-glucopyranose-(1-4)-[alpha-L-fucopyranose-(1-6)]2-acetamido-2-deoxy-beta-D-glucopyranose

Chain D:  67% 33%



- Molecule 3: 2-acetamido-2-deoxy-beta-D-glucopyranose-(1-4)-[alpha-L-fucopyranose-(1-6)]2-acetamido-2-deoxy-beta-D-glucopyranose

Chain E:  67% 33%



4 Data and refinement statistics

Property	Value	Source
Space group	I 4 2 2	Depositor
Cell constants a, b, c, α , β , γ	154.26Å 154.26Å 127.83Å 90.00° 90.00° 90.00°	Depositor
Resolution (Å)	109.10 – 2.35 49.21 – 2.35	Depositor EDS
% Data completeness (in resolution range)	99.1 (109.10-2.35) 99.1 (49.21-2.35)	Depositor EDS
R_{merge}	0.16	Depositor
R_{sym}	(Not available)	Depositor
$\langle I/\sigma(I) \rangle$ ¹	1.02 (at 2.34Å)	Xtriage
Refinement program	PHENIX 1.19.2_4158	Depositor
R, R_{free}	0.176 , 0.226 0.174 , 0.223	Depositor DCC
R_{free} test set	1594 reflections (5.00%)	wwPDB-VP
Wilson B-factor (Å ²)	58.6	Xtriage
Anisotropy	0.429	Xtriage
Bulk solvent k_{sol} (e/Å ³), B_{sol} (Å ²)	(Not available) , (Not available)	EDS
L-test for twinning ²	$\langle L \rangle = 0.51$, $\langle L^2 \rangle = 0.34$	Xtriage
Estimated twinning fraction	No twinning to report.	Xtriage
F_o, F_c correlation	0.95	EDS
Total number of atoms	4646	wwPDB-VP
Average B, all atoms (Å ²)	73.0	wwPDB-VP

Xtriage's analysis on translational NCS is as follows: *The largest off-origin peak in the Patterson function is 3.68% of the height of the origin peak. No significant pseudotranslation is detected.*

¹Intensities estimated from amplitudes.

²Theoretical values of $\langle |L| \rangle$, $\langle L^2 \rangle$ for acentric reflections are 0.5, 0.333 respectively for untwinned datasets, and 0.375, 0.2 for perfectly twinned datasets.

5 Model quality

5.1 Standard geometry

Bond lengths and bond angles in the following residue types are not validated in this section: NA, NAG, GOA, GOL, CL, FUC, SO4, 8IV

The Z score for a bond length (or angle) is the number of standard deviations the observed value is removed from the expected value. A bond length (or angle) with $|Z| > 5$ is considered an outlier worth inspection. RMSZ is the root-mean-square of all Z scores of the bond lengths (or angles).

Mol	Chain	Bond lengths		Bond angles	
		RMSZ	$\# Z > 5$	RMSZ	$\# Z > 5$
1	A	0.43	0/4382	0.60	0/5947

There are no bond length outliers.

There are no bond angle outliers.

There are no chirality outliers.

There are no planarity outliers.

5.2 Too-close contacts

In the following table, the Non-H and H(model) columns list the number of non-hydrogen atoms and hydrogen atoms in the chain respectively. The H(added) column lists the number of hydrogen atoms added and optimized by MolProbity. The Clashes column lists the number of clashes within the asymmetric unit, whereas Symm-Clashes lists symmetry-related clashes.

Mol	Chain	Non-H	H(model)	H(added)	Clashes	Symm-Clashes
1	A	4255	0	4150	67	0
2	B	24	0	22	0	0
3	C	38	0	34	4	0
3	D	38	0	34	1	0
3	E	38	0	34	0	0
4	A	28	0	0	0	0
5	A	28	0	26	0	0
6	A	12	0	16	2	0
7	A	5	0	3	0	0
8	A	15	0	0	0	0
9	A	13	0	0	1	0
10	A	2	0	0	0	0
11	A	150	0	0	10	0
All	All	4646	0	4319	69	0

The all-atom clashscore is defined as the number of clashes found per 1000 atoms (including hydrogen atoms). The all-atom clashscore for this structure is 8.

All (69) close contacts within the same asymmetric unit are listed below, sorted by their clash magnitude.

Atom-1	Atom-2	Interatomic distance (Å)	Clash overlap (Å)
1:A:414:ASN:OD1	11:A:701:HOH:O	1.91	0.89
1:A:378:ASP:HB3	1:A:381:ARG:HG3	1.64	0.80
1:A:422:GLU:OE2	1:A:509[A]:ARG:NH2	2.18	0.76
9:A:610:CL:CL	11:A:752:HOH:O	2.39	0.76
1:A:370:LEU:O	1:A:374:THR:OG1	2.08	0.67
11:A:822:HOH:O	3:C:3:FUC:O3	2.13	0.67
1:A:157:PRO:HG3	1:A:236:LEU:HD12	1.79	0.64
1:A:227:PHE:CE1	1:A:303:PRO:HB2	2.33	0.64
1:A:288:VAL:HB	6:A:604:GOL:H32	1.79	0.64
1:A:497:GLU:OE1	11:A:702:HOH:O	2.15	0.62
1:A:176:GLN:HG3	11:A:845:HOH:O	2.02	0.59
1:A:257:GLU:HA	1:A:260:ILE:HD13	1.84	0.59
1:A:227:PHE:CD1	1:A:303:PRO:HB2	2.38	0.58
1:A:77:HIS:O	1:A:81:MET:HG2	2.04	0.57
1:A:500:TYR:CZ	1:A:511[B]:MET:HB2	2.41	0.55
1:A:319:VAL:O	1:A:418:PHE:HA	2.06	0.55
1:A:320:GLY:HA3	1:A:419:TYR:CE2	2.41	0.55
1:A:159:ASN:HD21	1:A:258:THR:HG22	1.70	0.55
1:A:227:PHE:HZ	1:A:307:LEU:HB2	1.71	0.55
1:A:376:TRP:HH2	1:A:385:TYR:CE1	2.26	0.54
1:A:500:TYR:CZ	1:A:511[A]:MET:HB2	2.43	0.54
1:A:125:LEU:HD12	1:A:128:TYR:CE2	2.43	0.54
1:A:209:LEU:HD23	1:A:312:PHE:HB3	1.90	0.53
1:A:503:LEU:HA	11:A:795:HOH:O	2.09	0.53
1:A:304:ASP:HB3	11:A:838:HOH:O	2.08	0.52
1:A:522:TRP:O	1:A:527:PRO:HD3	2.10	0.51
1:A:494:LYS:HD3	1:A:496:THR:H	1.75	0.51
1:A:403:LEU:O	1:A:407:LYS:HG3	2.11	0.51
1:A:39:GLY:HA3	1:A:40:ARG:NH1	2.26	0.50
1:A:506:GLU:HG3	1:A:507:SER:H	1.75	0.50
1:A:188:ASN:ND2	3:C:3:FUC:H3	2.26	0.50
1:A:270[A]:GLN:O	1:A:274:LEU:HG	2.13	0.48
1:A:328:ALA:HB2	1:A:437:MET:HE2	1.95	0.48
1:A:374:THR:HA	1:A:376:TRP:CZ3	2.48	0.48
1:A:506:GLU:CG	1:A:507:SER:H	2.26	0.48
1:A:188:ASN:HD21	3:C:3:FUC:H3	1.78	0.48
1:A:372[A]:HIS:CE1	1:A:518:GLN:HA	2.51	0.46

Continued on next page...

Continued from previous page...

Atom-1	Atom-2	Interatomic distance (Å)	Clash overlap (Å)
1:A:270[B]:GLN:O	1:A:274:LEU:HG	2.15	0.45
1:A:409:PHE:O	11:A:701:HOH:O	2.21	0.45
1:A:320:GLY:HA3	1:A:419:TYR:CD2	2.52	0.45
1:A:504:ASN:OD1	1:A:506:GLU:HG2	2.17	0.45
1:A:197:GLU:HA	1:A:223:GLN:O	2.16	0.45
1:A:254:ARG:H	1:A:260:ILE:HG13	1.82	0.45
1:A:5:ILE:HG12	1:A:55:ILE:HD13	1.98	0.44
1:A:304:ASP:OD2	1:A:304:ASP:N	2.50	0.44
1:A:254:ARG:O	1:A:260:ILE:HD11	2.18	0.44
1:A:195:PHE:HB3	1:A:221:ILE:HB	2.00	0.44
1:A:299:LEU:HD12	1:A:299:LEU:HA	1.83	0.44
1:A:383:GLU:O	1:A:387:GLU:HG3	2.18	0.44
1:A:288:VAL:HB	6:A:604:GOL:C3	2.47	0.43
1:A:242:ARG:HG2	1:A:279:VAL:HG23	2.01	0.43
1:A:449:PRO:HA	1:A:456:TYR:CD1	2.53	0.43
1:A:262:LYS:HB3	1:A:262:LYS:HE3	1.65	0.43
1:A:107:ALA:HB3	1:A:140:ILE:HD12	2.00	0.42
1:A:236:LEU:HD21	1:A:294:VAL:HB	2.02	0.42
1:A:381:ARG:HB2	1:A:384:ASN:ND2	2.34	0.42
1:A:191:SER:HB2	3:C:3:FUC:H4	2.01	0.42
1:A:427:LYS:HE2	1:A:427:LYS:HB3	1.58	0.42
1:A:458:LYS:HE3	1:A:461:GLU:OE1	2.18	0.42
1:A:494:LYS:NZ	11:A:714:HOH:O	2.52	0.42
1:A:372[A]:HIS:HE1	1:A:518:GLN:HA	1.84	0.42
1:A:320:GLY:HA3	1:A:419:TYR:CZ	2.54	0.42
1:A:198:SER:HA	1:A:224:SER:O	2.19	0.41
1:A:474:PHE:HB2	1:A:480:PRO:HB3	2.02	0.41
1:A:347:ARG:HD2	1:A:385:TYR:OH	2.20	0.41
1:A:270[B]:GLN:NE2	1:A:274:LEU:HD21	2.36	0.41
1:A:328:ALA:HA	1:A:434:MET:CE	2.51	0.41
1:A:249:LEU:HD22	3:D:3:FUC:H62	2.01	0.41
1:A:378:ASP:OD2	11:A:703:HOH:O	2.21	0.40

There are no symmetry-related clashes.

5.3 Torsion angles

5.3.1 Protein backbone

In the following table, the Percentiles column shows the percent Ramachandran outliers of the chain as a percentile score with respect to all X-ray entries followed by that with respect to entries

of similar resolution.

The Analysed column shows the number of residues for which the backbone conformation was analysed, and the total number of residues.

Mol	Chain	Analysed	Favoured	Allowed	Outliers	Percentiles
1	A	532/529 (101%)	507 (95%)	24 (4%)	1 (0%)	47 56

All (1) Ramachandran outliers are listed below:

Mol	Chain	Res	Type
1	A	281	PRO

5.3.2 Protein sidechains ⓘ

In the following table, the Percentiles column shows the percent sidechain outliers of the chain as a percentile score with respect to all X-ray entries followed by that with respect to entries of similar resolution.

The Analysed column shows the number of residues for which the sidechain conformation was analysed, and the total number of residues.

Mol	Chain	Analysed	Rotameric	Outliers	Percentiles
1	A	458/454 (101%)	441 (96%)	17 (4%)	34 42

All (17) residues with a non-rotameric sidechain are listed below:

Mol	Chain	Res	Type
1	A	9	LYS
1	A	40	ARG
1	A	54	ASP
1	A	144	MET
1	A	195	PHE
1	A	262	LYS
1	A	268	ASP
1	A	287	SER
1	A	348	LYS
1	A	376	TRP
1	A	379	ASP
1	A	454	ASP
1	A	471	TRP
1	A	495	SER
1	A	508	THR
1	A	511[A]	MET

Continued on next page...

Continued from previous page...

Mol	Chain	Res	Type
1	A	511[B]	MET

Sometimes sidechains can be flipped to improve hydrogen bonding and reduce clashes. All (5) such sidechains are listed below:

Mol	Chain	Res	Type
1	A	35	GLN
1	A	68	ASN
1	A	77	HIS
1	A	414	ASN
1	A	484	GLN

5.3.3 RNA ⓘ

There are no RNA molecules in this entry.

5.4 Non-standard residues in protein, DNA, RNA chains ⓘ

There are no non-standard protein/DNA/RNA residues in this entry.

5.5 Carbohydrates ⓘ

11 monosaccharides are modelled in this entry.

In the following table, the Counts columns list the number of bonds (or angles) for which Mogul statistics could be retrieved, the number of bonds (or angles) that are observed in the model and the number of bonds (or angles) that are defined in the Chemical Component Dictionary. The Link column lists molecule types, if any, to which the group is linked. The Z score for a bond length (or angle) is the number of standard deviations the observed value is removed from the expected value. A bond length (or angle) with $|Z| > 2$ is considered an outlier worth inspection. RMSZ is the root-mean-square of all Z scores of the bond lengths (or angles).

Mol	Type	Chain	Res	Link	Bond lengths			Bond angles		
					Counts	RMSZ	# Z > 2	Counts	RMSZ	# Z > 2
2	NAG	B	1	2,1	14,14,15	0.28	0	17,19,21	0.72	1 (5%)
2	FUC	B	2	2	10,10,11	1.25	1 (10%)	14,14,16	1.50	3 (21%)
3	NAG	C	1	3,1	14,14,15	0.45	0	17,19,21	0.47	0
3	NAG	C	2	3	14,14,15	0.51	0	17,19,21	0.52	0
3	FUC	C	3	3	10,10,11	1.45	1 (10%)	14,14,16	1.37	2 (14%)
3	NAG	D	1	3,1	14,14,15	0.35	0	17,19,21	0.62	0
3	NAG	D	2	3	14,14,15	0.50	0	17,19,21	0.55	0

Mol	Type	Chain	Res	Link	Bond lengths			Bond angles		
					Counts	RMSZ	# Z > 2	Counts	RMSZ	# Z > 2
3	FUC	D	3	3	10,10,11	1.24	2 (20%)	14,14,16	1.18	1 (7%)
3	NAG	E	1	3,1	14,14,15	0.41	0	17,19,21	0.52	0
3	NAG	E	2	3	14,14,15	0.31	0	17,19,21	0.34	0
3	FUC	E	3	3	10,10,11	1.04	1 (10%)	14,14,16	0.99	1 (7%)

In the following table, the Chirals column lists the number of chiral outliers, the number of chiral centers analysed, the number of these observed in the model and the number defined in the Chemical Component Dictionary. Similar counts are reported in the Torsion and Rings columns. '-' means no outliers of that kind were identified.

Mol	Type	Chain	Res	Link	Chirals	Torsions	Rings
2	NAG	B	1	2,1	-	2/6/23/26	0/1/1/1
2	FUC	B	2	2	-	-	0/1/1/1
3	NAG	C	1	3,1	-	0/6/23/26	0/1/1/1
3	NAG	C	2	3	-	2/6/23/26	0/1/1/1
3	FUC	C	3	3	-	-	0/1/1/1
3	NAG	D	1	3,1	-	2/6/23/26	0/1/1/1
3	NAG	D	2	3	-	3/6/23/26	0/1/1/1
3	FUC	D	3	3	-	-	0/1/1/1
3	NAG	E	1	3,1	-	0/6/23/26	0/1/1/1
3	NAG	E	2	3	-	2/6/23/26	0/1/1/1
3	FUC	E	3	3	-	-	0/1/1/1

All (5) bond length outliers are listed below:

Mol	Chain	Res	Type	Atoms	Z	Observed(Å)	Ideal(Å)
3	C	3	FUC	C4-C3	3.15	1.60	1.52
2	B	2	FUC	C1-C2	2.93	1.58	1.52
3	D	3	FUC	C4-C5	2.18	1.57	1.52
3	D	3	FUC	O5-C1	-2.17	1.40	1.43
3	E	3	FUC	C1-C2	2.08	1.56	1.52

All (8) bond angle outliers are listed below:

Mol	Chain	Res	Type	Atoms	Z	Observed(°)	Ideal(°)
2	B	2	FUC	C1-O5-C5	3.21	120.05	112.78
2	B	2	FUC	O2-C2-C1	2.98	115.25	109.15
3	D	3	FUC	O5-C5-C4	2.58	114.14	109.52
3	C	3	FUC	C3-C4-C5	2.51	113.68	109.77
2	B	1	NAG	C1-O5-C5	2.30	115.31	112.19

Continued on next page...

Continued from previous page...

Mol	Chain	Res	Type	Atoms	Z	Observed(°)	Ideal(°)
3	C	3	FUC	O5-C5-C4	2.29	113.62	109.52
3	E	3	FUC	C1-C2-C3	2.18	112.34	109.67
2	B	2	FUC	O5-C5-C4	2.10	113.29	109.52

There are no chirality outliers.

All (11) torsion outliers are listed below:

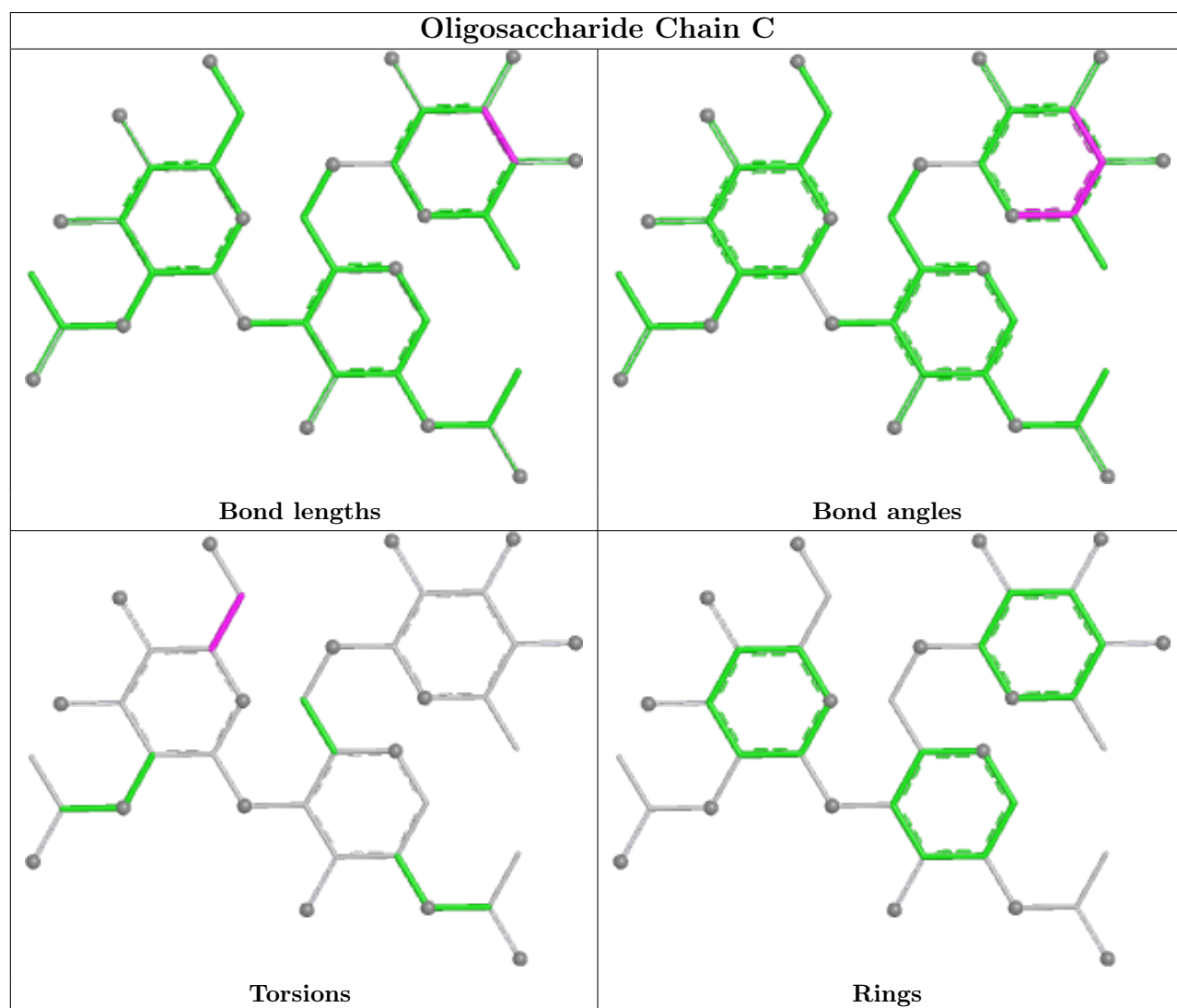
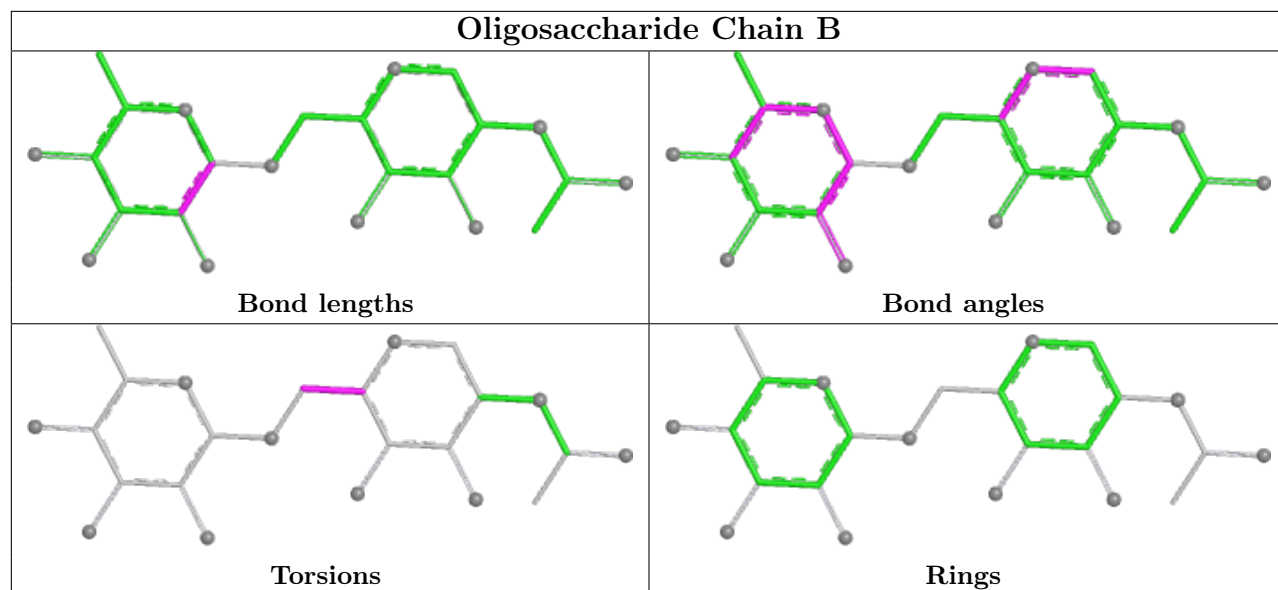
Mol	Chain	Res	Type	Atoms
3	E	2	NAG	O5-C5-C6-O6
3	D	2	NAG	C8-C7-N2-C2
3	D	2	NAG	O7-C7-N2-C2
2	B	1	NAG	O5-C5-C6-O6
3	E	2	NAG	C4-C5-C6-O6
3	D	1	NAG	C4-C5-C6-O6
3	C	2	NAG	C4-C5-C6-O6
3	D	2	NAG	O5-C5-C6-O6
3	D	1	NAG	O5-C5-C6-O6
3	C	2	NAG	O5-C5-C6-O6
2	B	1	NAG	C4-C5-C6-O6

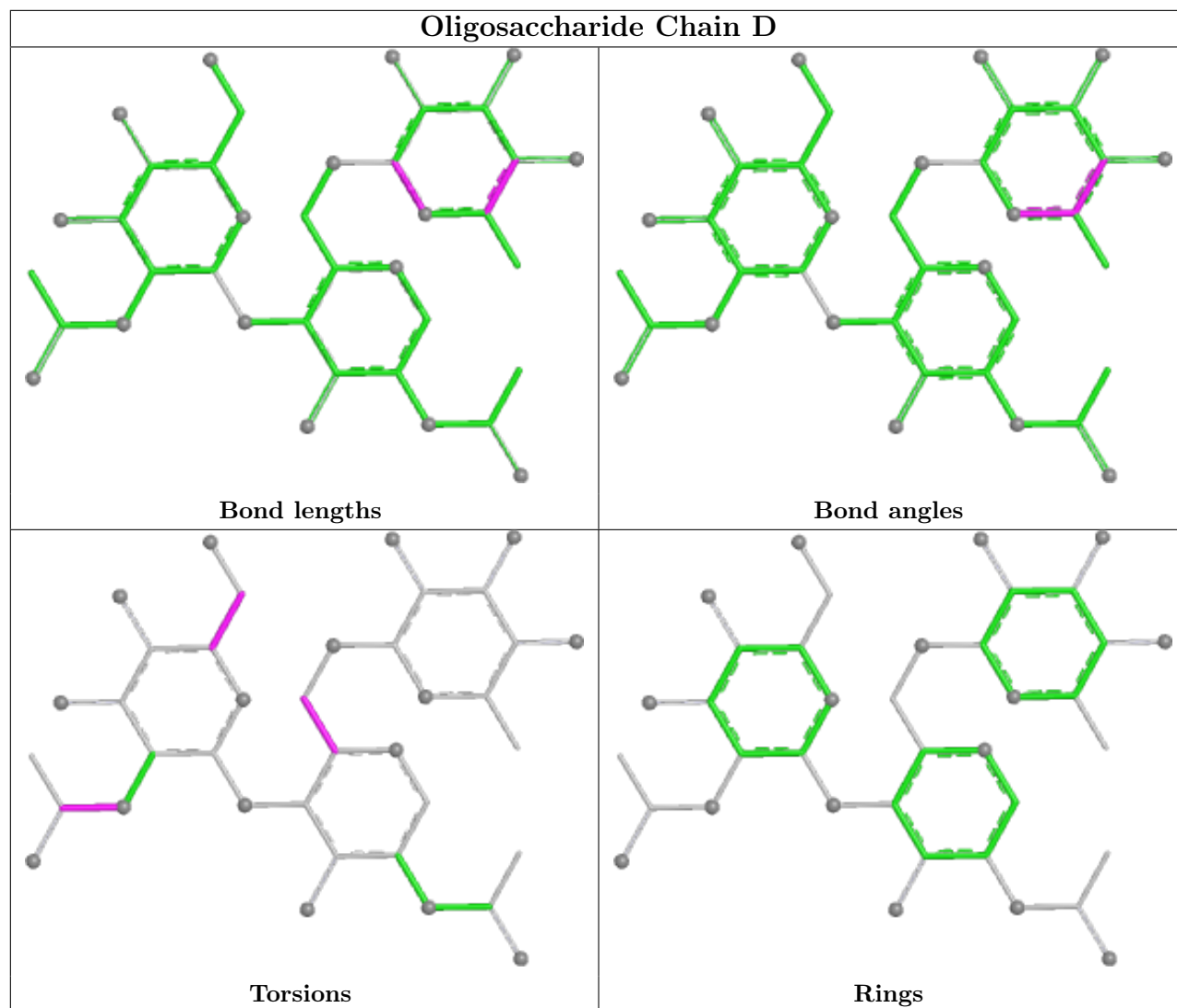
There are no ring outliers.

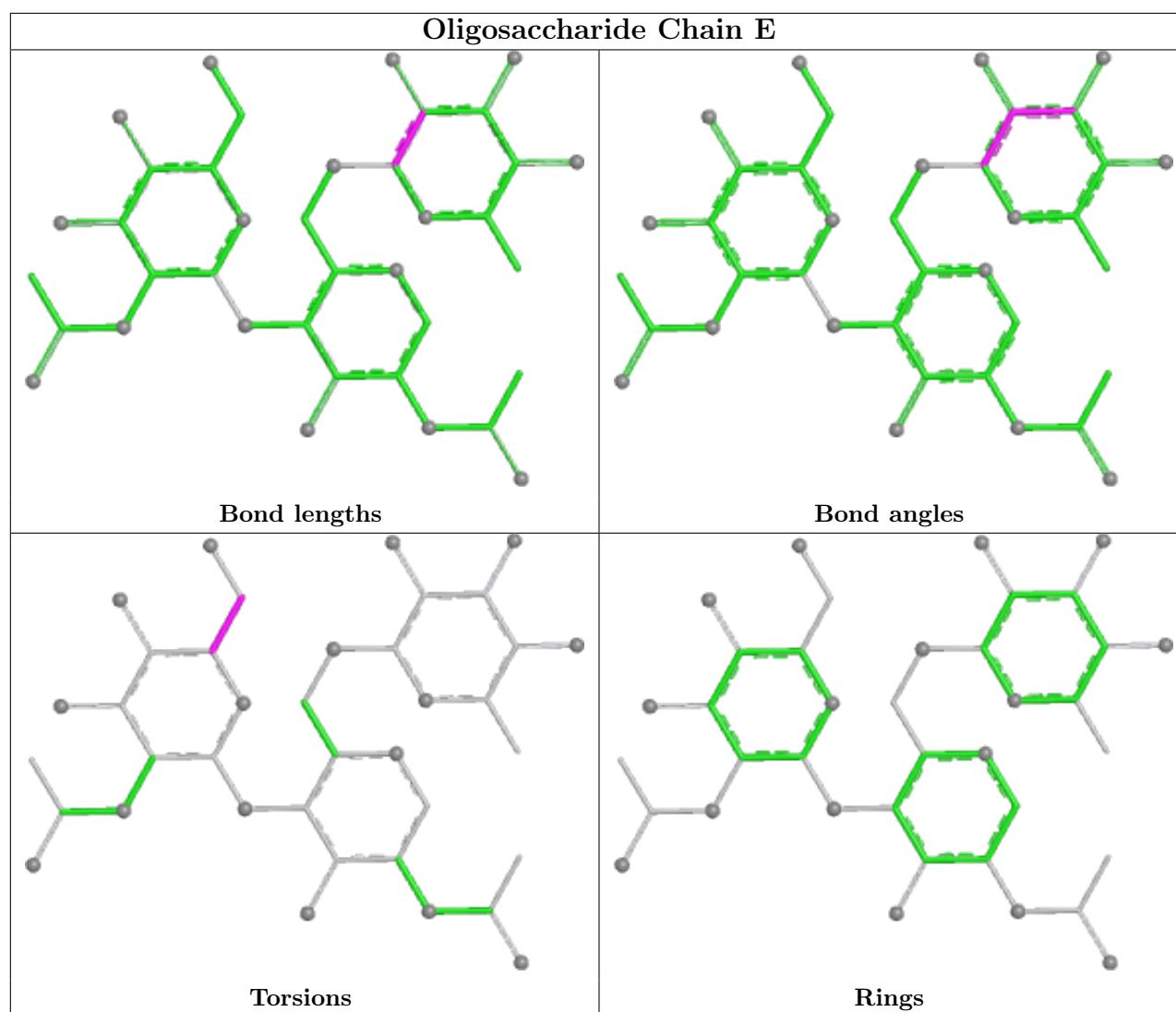
2 monomers are involved in 5 short contacts:

Mol	Chain	Res	Type	Clashes	Symm-Clashes
3	D	3	FUC	1	0
3	C	3	FUC	4	0

The following is a two-dimensional graphical depiction of Mogul quality analysis of bond lengths, bond angles, torsion angles, and ring geometry for oligosaccharide.







5.6 Ligand geometry [i](#)

Of 24 ligands modelled in this entry, 15 are monoatomic - leaving 9 for Mogul analysis.

In the following table, the Counts columns list the number of bonds (or angles) for which Mogul statistics could be retrieved, the number of bonds (or angles) that are observed in the model and the number of bonds (or angles) that are defined in the Chemical Component Dictionary. The Link column lists molecule types, if any, to which the group is linked. The Z score for a bond length (or angle) is the number of standard deviations the observed value is removed from the expected value. A bond length (or angle) with $|Z| > 2$ is considered an outlier worth inspection. RMSZ is the root-mean-square of all Z scores of the bond lengths (or angles).

Mol	Type	Chain	Res	Link	Bond lengths			Bond angles		
					Counts	RMSZ	$\# Z > 2$	Counts	RMSZ	$\# Z > 2$
6	GOL	A	604	-	5,5,5	0.86	0	5,5,5	1.08	1 (20%)
8	SO4	A	608	-	4,4,4	0.18	0	6,6,6	0.11	0
5	NAG	A	603	1	14,14,15	0.40	0	17,19,21	0.56	0

Mol	Type	Chain	Res	Link	Bond lengths			Bond angles		
					Counts	RMSZ	# Z > 2	Counts	RMSZ	# Z > 2
7	GOA	A	606	-	4,4,4	1.48	1 (25%)	4,4,4	0.56	0
8	SO4	A	607	-	4,4,4	0.14	0	6,6,6	0.19	0
6	GOL	A	605	-	5,5,5	1.05	0	5,5,5	0.95	0
5	NAG	A	602	1	14,14,15	0.47	0	17,19,21	0.45	0
8	SO4	A	609	-	4,4,4	0.27	0	6,6,6	0.28	0
4	8IV	A	601	-	30,30,30	1.96	9 (30%)	35,38,38	1.78	9 (25%)

In the following table, the Chirals column lists the number of chiral outliers, the number of chiral centers analysed, the number of these observed in the model and the number defined in the Chemical Component Dictionary. Similar counts are reported in the Torsion and Rings columns. '-' means no outliers of that kind were identified.

Mol	Type	Chain	Res	Link	Chirals	Torsions	Rings
6	GOL	A	604	-	-	2/4/4/4	-
5	NAG	A	603	1	-	1/6/23/26	0/1/1/1
7	GOA	A	606	-	-	0/2/2/2	-
6	GOL	A	605	-	-	4/4/4/4	-
5	NAG	A	602	1	-	0/6/23/26	0/1/1/1
4	8IV	A	601	-	-	4/23/31/31	0/3/3/3

All (10) bond length outliers are listed below:

Mol	Chain	Res	Type	Atoms	Z	Observed(Å)	Ideal(Å)
4	A	601	8IV	C12-C02	4.86	1.63	1.52
4	A	601	8IV	C05-C06	3.68	1.58	1.51
4	A	601	8IV	C05-N04	3.38	1.52	1.47
4	A	601	8IV	C14-N13	3.01	1.40	1.33
4	A	601	8IV	C03-C02	2.77	1.58	1.52
4	A	601	8IV	C24-C23	2.69	1.43	1.39
4	A	601	8IV	C07-C06	2.51	1.59	1.52
4	A	601	8IV	C23-C16	2.26	1.56	1.52
7	A	606	GOA	C2-C1	2.20	1.58	1.51
4	A	601	8IV	C03-N04	2.06	1.50	1.47

All (10) bond angle outliers are listed below:

Mol	Chain	Res	Type	Atoms	Z	Observed(°)	Ideal(°)
4	A	601	8IV	C08-C07-C06	3.87	119.47	112.15
4	A	601	8IV	C23-C16-C14	3.34	117.65	110.45
4	A	601	8IV	C22-C17-C18	-3.26	114.22	118.29
4	A	601	8IV	C17-C16-C14	-3.13	103.70	110.45

Continued on next page...

Continued from previous page...

Mol	Chain	Res	Type	Atoms	Z	Observed(°)	Ideal(°)
4	A	601	8IV	O15-C14-N13	-2.98	116.61	122.99
4	A	601	8IV	O15-C14-C16	-2.82	116.83	122.05
4	A	601	8IV	C12-N13-C14	2.66	127.75	122.67
4	A	601	8IV	C19-C18-C17	2.60	123.86	120.65
4	A	601	8IV	C28-C23-C24	-2.33	115.38	118.29
6	A	604	GOL	C3-C2-C1	-2.11	103.52	111.70

There are no chirality outliers.

All (11) torsion outliers are listed below:

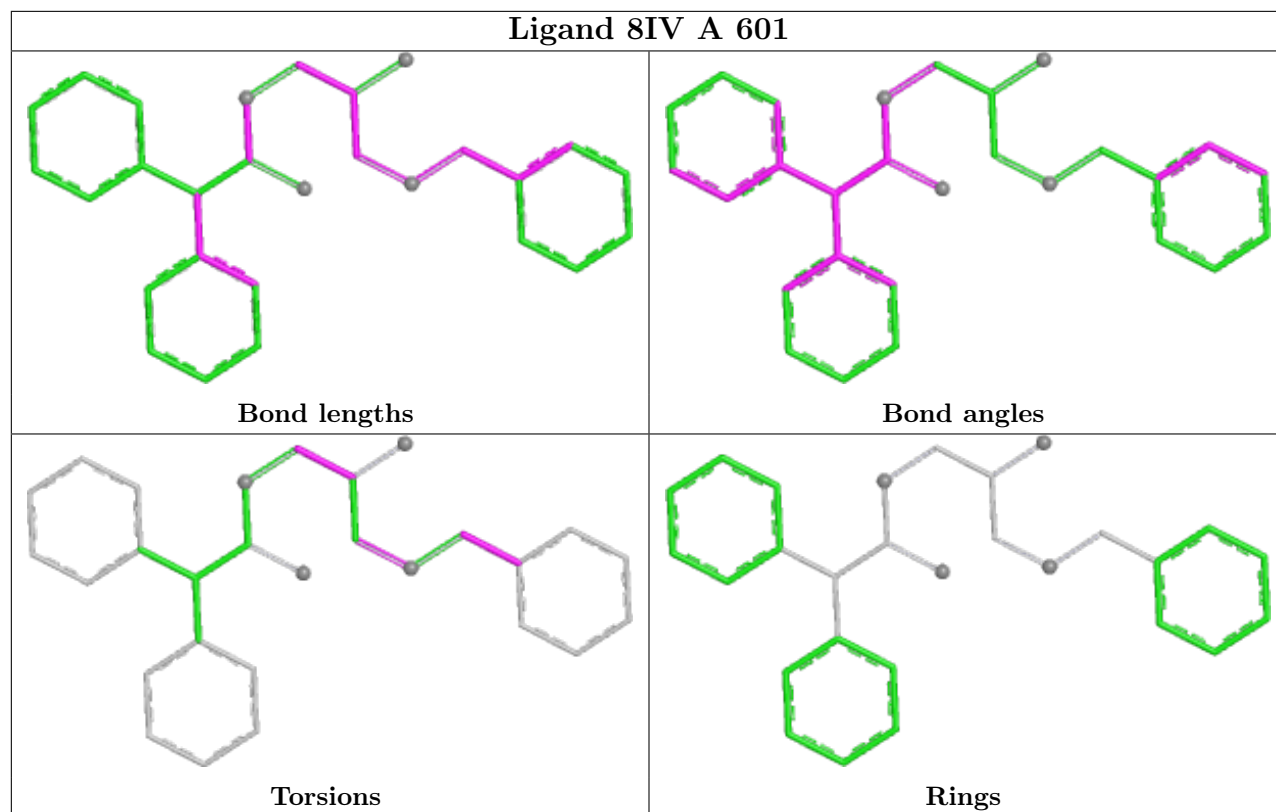
Mol	Chain	Res	Type	Atoms
4	A	601	8IV	C03-C02-C12-N13
4	A	601	8IV	C02-C03-N04-C05
4	A	601	8IV	N04-C05-C06-C11
6	A	604	GOL	C1-C2-C3-O3
6	A	604	GOL	O2-C2-C3-O3
6	A	605	GOL	O1-C1-C2-C3
6	A	605	GOL	C1-C2-C3-O3
4	A	601	8IV	O01-C02-C12-N13
6	A	605	GOL	O1-C1-C2-O2
6	A	605	GOL	O2-C2-C3-O3
5	A	603	NAG	O5-C5-C6-O6

There are no ring outliers.

1 monomer is involved in 2 short contacts:

Mol	Chain	Res	Type	Clashes	Symm-Clashes
6	A	604	GOL	2	0

The following is a two-dimensional graphical depiction of Mogul quality analysis of bond lengths, bond angles, torsion angles, and ring geometry for all instances of the Ligand of Interest. In addition, ligands with molecular weight > 250 and outliers as shown on the validation Tables will also be included. For torsion angles, if less than 5% of the Mogul distribution of torsion angles is within 10 degrees of the torsion angle in question, then that torsion angle is considered an outlier. Any bond that is central to one or more torsion angles identified as an outlier by Mogul will be highlighted in the graph. For rings, the root-mean-square deviation (RMSD) between the ring in question and similar rings identified by Mogul is calculated over all ring torsion angles. If the average RMSD is greater than 60 degrees and the minimal RMSD between the ring in question and any Mogul-identified rings is also greater than 60 degrees, then that ring is considered an outlier. The outliers are highlighted in purple. The color gray indicates Mogul did not find sufficient equivalents in the CSD to analyse the geometry.



5.7 Other polymers [i](#)

There are no such residues in this entry.

5.8 Polymer linkage issues [i](#)

There are no chain breaks in this entry.

6 Fit of model and data ⓘ

6.1 Protein, DNA and RNA chains ⓘ

In the following table, the column labelled ‘#RSRZ > 2’ contains the number (and percentage) of RSRZ outliers, followed by percent RSRZ outliers for the chain as percentile scores relative to all X-ray entries and entries of similar resolution. The OWAB column contains the minimum, median, 95th percentile and maximum values of the occupancy-weighted average B-factor per residue. The column labelled ‘Q < 0.9’ lists the number of (and percentage) of residues with an average occupancy less than 0.9.

Mol	Chain	Analysed	<RSRZ>	#RSRZ>2	OWAB(Å ²)	Q<0.9
1	A	527/529 (99%)	0.90	68 (12%) 3 5	49, 67, 103, 149	0

All (68) RSRZ outliers are listed below:

Mol	Chain	Res	Type	RSRZ
1	A	3	ASP	7.1
1	A	282	TYR	7.0
1	A	51	LYS	6.3
1	A	237	TYR	6.0
1	A	255	GLU	5.4
1	A	350	PHE	5.0
1	A	377	VAL	4.7
1	A	278	PHE	4.6
1	A	261	ILE	4.6
1	A	376	TRP	4.4
1	A	49	LEU	4.3
1	A	55	ILE	4.2
1	A	378	ASP	4.0
1	A	379	ASP	3.9
1	A	17	GLN	3.7
1	A	56	TRP	3.6
1	A	258	THR	3.5
1	A	4	ILE	3.3
1	A	244	LEU	3.3
1	A	259	GLU	3.3
1	A	458	LYS	3.2
1	A	18	LEU	3.2
1	A	13	VAL	3.1
1	A	132	PHE	3.1
1	A	370	LEU	3.0
1	A	185	PHE	2.9
1	A	155	ALA	2.8

Continued on next page...

Continued from previous page...

Mol	Chain	Res	Type	RSRZ
1	A	54	ASP	2.8
1	A	380	GLN	2.8
1	A	529	VAL	2.8
1	A	66	CYS	2.8
1	A	462	ILE	2.7
1	A	148	VAL	2.6
1	A	115	GLY	2.6
1	A	16	MET	2.6
1	A	265	ARG	2.6
1	A	493	PHE	2.6
1	A	202	ALA	2.5
1	A	52	TRP	2.5
1	A	156	LEU	2.5
1	A	288	VAL	2.4
1	A	24	THR	2.4
1	A	5	ILE	2.4
1	A	41	LEU	2.4
1	A	203	SER	2.4
1	A	290	PHE	2.4
1	A	69	ILE	2.4
1	A	12	LYS	2.3
1	A	412	TRP	2.3
1	A	525	PHE	2.3
1	A	201	ALA	2.3
1	A	372[A]	HIS	2.2
1	A	526	PHE	2.2
1	A	48	SER	2.2
1	A	9	LYS	2.2
1	A	79	SER	2.2
1	A	116	GLY	2.2
1	A	50	THR	2.2
1	A	277	ALA	2.2
1	A	522	TRP	2.2
1	A	452	ARG	2.2
1	A	40	ARG	2.1
1	A	114	TYR	2.1
1	A	42	ARG	2.1
1	A	7	ALA	2.1
1	A	267	LYS	2.0
1	A	135	ARG	2.0
1	A	22	GLY	2.0

6.2 Non-standard residues in protein, DNA, RNA chains ⓘ

There are no non-standard protein/DNA/RNA residues in this entry.

6.3 Carbohydrates ⓘ

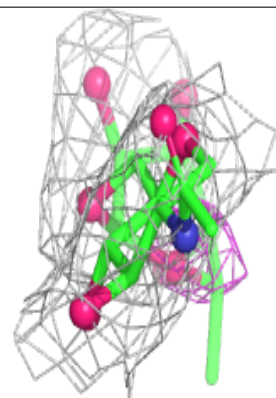
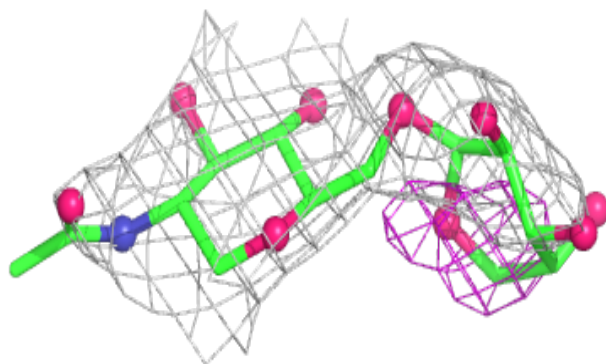
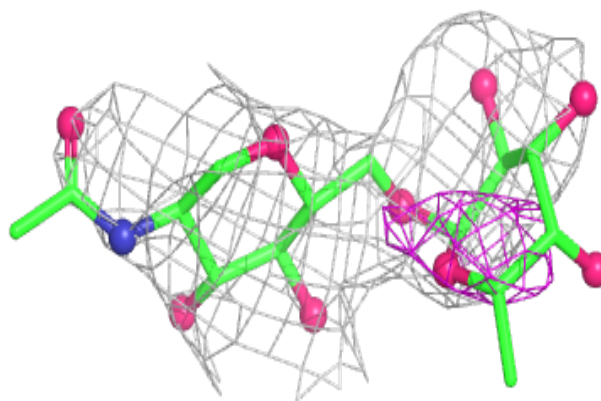
In the following table, the Atoms column lists the number of modelled atoms in the group and the number defined in the chemical component dictionary. The B-factors column lists the minimum, median, 95th percentile and maximum values of B factors of atoms in the group. The column labelled 'Q< 0.9' lists the number of atoms with occupancy less than 0.9.

Mol	Type	Chain	Res	Atoms	RSCC	RSR	B-factors(Å ²)	Q<0.9
2	FUC	B	2	10/11	0.37	0.63	144,153,159,163	0
3	NAG	C	2	14/15	0.63	0.29	133,147,158,159	0
3	FUC	C	3	10/11	0.66	0.42	104,123,134,138	0
2	NAG	B	1	14/15	0.78	0.36	130,138,148,148	0
3	NAG	C	1	14/15	0.81	0.14	100,118,128,130	0
3	NAG	D	1	14/15	0.81	0.28	140,146,152,152	0
3	NAG	D	2	14/15	0.81	0.35	143,149,153,157	0
3	FUC	E	3	10/11	0.83	0.35	81,99,101,107	0
3	NAG	E	2	14/15	0.86	0.21	102,118,134,138	0
3	FUC	D	3	10/11	0.88	0.35	111,122,135,144	0
3	NAG	E	1	14/15	0.95	0.14	87,93,99,100	0

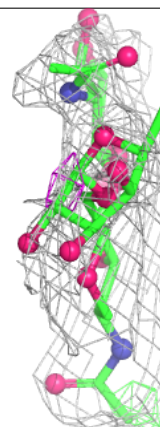
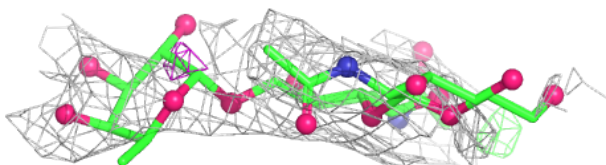
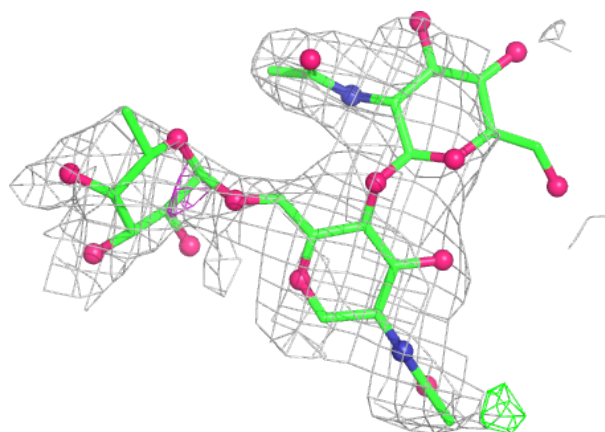
The following is a graphical depiction of the model fit to experimental electron density for oligosaccharide. Each fit is shown from different orientation to approximate a three-dimensional view.

Electron density around Chain B:

$2mF_o - DF_c$ (at 0.7 rmsd) in gray
 $mF_o - DF_c$ (at 3 rmsd) in purple (negative)
and green (positive)

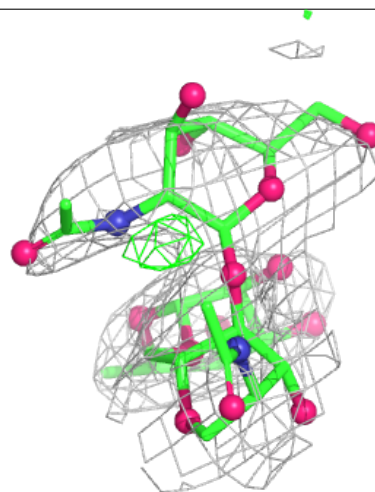
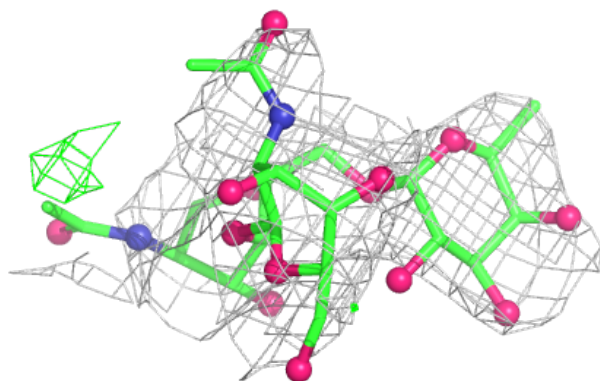
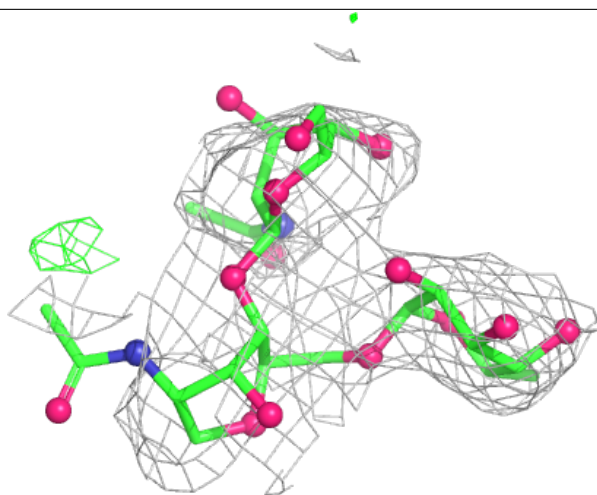
**Electron density around Chain C:**

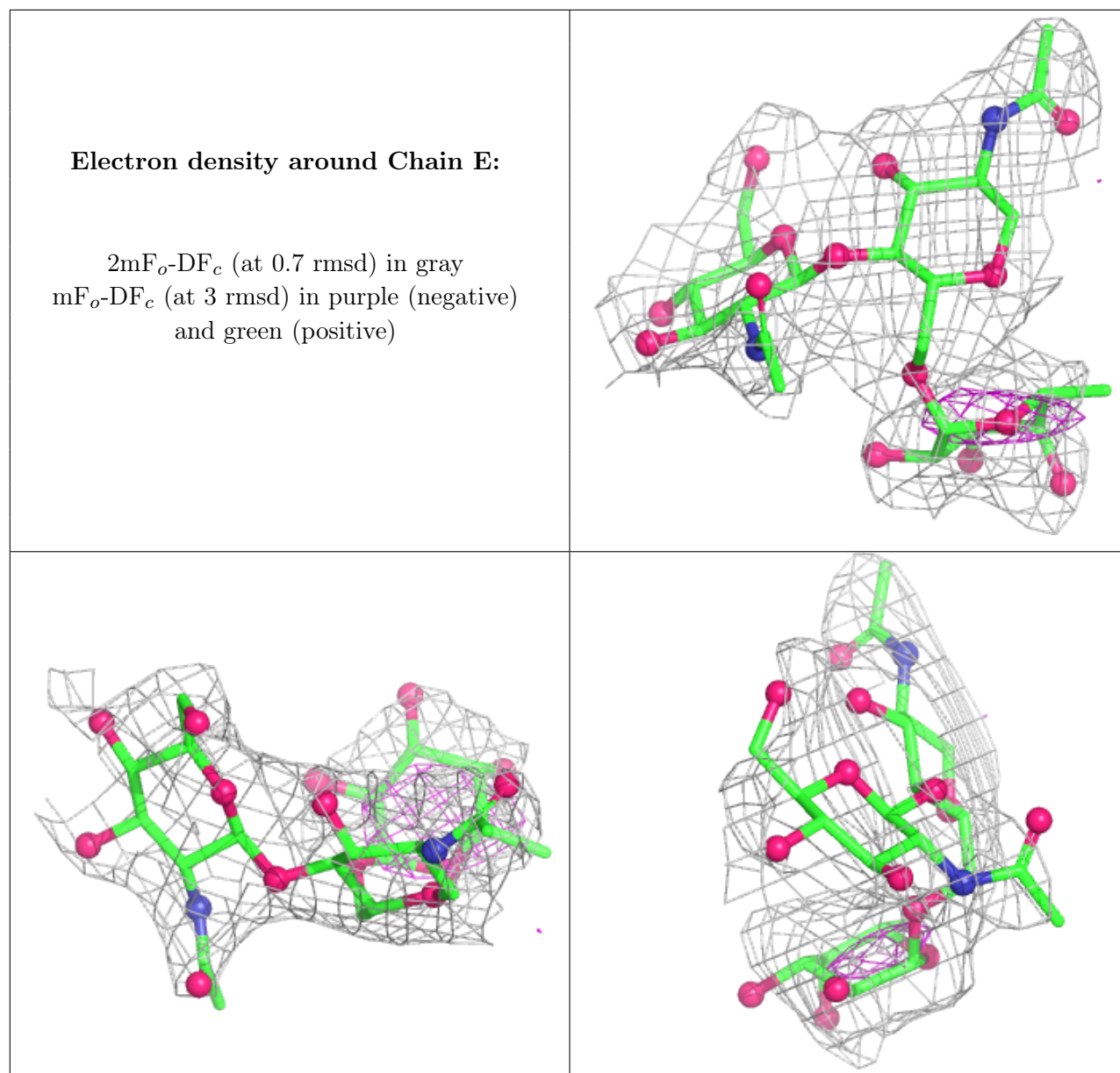
$2mF_o - DF_c$ (at 0.7 rmsd) in gray
 $mF_o - DF_c$ (at 3 rmsd) in purple (negative)
and green (positive)



Electron density around Chain D:

$2mF_o-DF_c$ (at 0.7 rmsd) in gray
 mF_o-DF_c (at 3 rmsd) in purple (negative)
and green (positive)





6.4 Ligands [i](#)

In the following table, the Atoms column lists the number of modelled atoms in the group and the number defined in the chemical component dictionary. The B-factors column lists the minimum, median, 95th percentile and maximum values of B factors of atoms in the group. The column labelled 'Q< 0.9' lists the number of atoms with occupancy less than 0.9.

Mol	Type	Chain	Res	Atoms	RSCC	RSR	B-factors(Å ²)	Q<0.9
9	CL	A	617	1/1	0.27	0.14	114,114,114,114	0
9	CL	A	618	1/1	0.27	0.16	119,119,119,119	0
6	GOL	A	605	6/6	0.55	0.20	100,107,119,120	0
9	CL	A	619	1/1	0.63	0.27	102,102,102,102	0

Continued on next page...

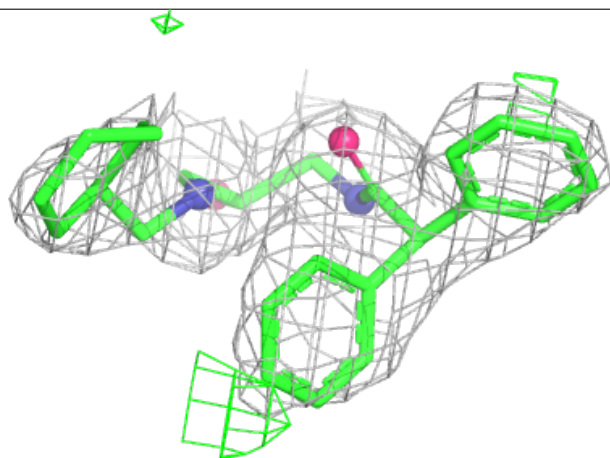
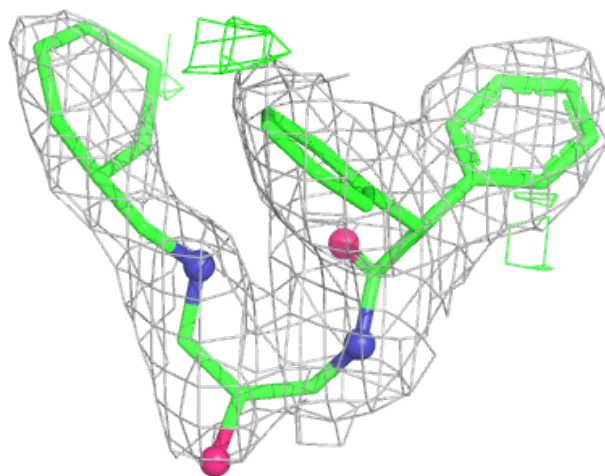
Continued from previous page...

Mol	Type	Chain	Res	Atoms	RSCC	RSR	B-factors(\AA^2)	Q<0.9
5	NAG	A	602	14/15	0.70	0.29	136,147,153,161	0
9	CL	A	622	1/1	0.72	0.11	93,93,93,93	0
5	NAG	A	603	14/15	0.73	0.20	97,114,126,133	0
8	SO4	A	608	5/5	0.74	0.26	111,113,121,128	0
8	SO4	A	609	5/5	0.77	0.27	91,98,109,113	0
9	CL	A	610	1/1	0.77	0.26	93,93,93,93	0
7	GOA	A	606	5/5	0.78	0.24	76,79,84,85	0
9	CL	A	612	1/1	0.78	0.13	95,95,95,95	0
9	CL	A	615	1/1	0.80	0.14	114,114,114,114	0
10	NA	A	624	1/1	0.82	0.58	94,94,94,94	0
6	GOL	A	604	6/6	0.84	0.25	82,87,89,92	0
10	NA	A	623	1/1	0.85	0.12	92,92,92,92	1
9	CL	A	621	1/1	0.85	0.38	113,113,113,113	0
4	8IV	A	601	28/28	0.86	0.27	56,69,78,82	0
9	CL	A	613	1/1	0.87	0.28	95,95,95,95	0
9	CL	A	620[A]	1/1	0.90	0.20	80,80,80,80	1
9	CL	A	611	1/1	0.91	0.24	92,92,92,92	0
9	CL	A	614	1/1	0.93	0.10	85,85,85,85	0
9	CL	A	616	1/1	0.94	0.11	100,100,100,100	0
8	SO4	A	607	5/5	0.96	0.16	58,62,69,72	5

The following is a graphical depiction of the model fit to experimental electron density of all instances of the Ligand of Interest. In addition, ligands with molecular weight > 250 and outliers as shown on the geometry validation Tables will also be included. Each fit is shown from different orientation to approximate a three-dimensional view.

Electron density around 8IV A 601:

$2mF_o-DF_c$ (at 0.7 rmsd) in gray
 mF_o-DF_c (at 3 rmsd) in purple (negative)
and green (positive)



6.5 Other polymers [i](#)

There are no such residues in this entry.