



wwPDB X-ray Structure Validation Summary Report ⓘ

Aug 21, 2020 – 06:09 PM BST

PDB ID : 1Q2R
Title : Chemical trapping and crystal structure of a catalytic tRNA guanine transglycosylase covalent intermediate
Authors : Xie, W.; Liu, X.; Huang, R.H.
Deposited on : 2003-07-25
Resolution : 2.90 Å(reported)

This is a wwPDB X-ray Structure Validation Summary Report for a publicly released PDB entry.

We welcome your comments at validation@mail.wwpdb.org

A user guide is available at

<https://www.wwpdb.org/validation/2017/XrayValidationReportHelp>

with specific help available everywhere you see the ⓘ symbol.

The following versions of software and data (see [references ⓘ](#)) were used in the production of this report:

MolProbity	:	4.02b-467
Mogul	:	1.8.5 (274361), CSD as541be (2020)
Xtriage (Phenix)	:	1.13
EDS	:	2.13.1
Percentile statistics	:	20191225.v01 (using entries in the PDB archive December 25th 2019)
Refmac	:	5.8.0158
CCP4	:	7.0.044 (Gargrove)
Ideal geometry (proteins)	:	Engh & Huber (2001)
Ideal geometry (DNA, RNA)	:	Parkinson et al. (1996)
Validation Pipeline (wwPDB-VP)	:	2.13.1

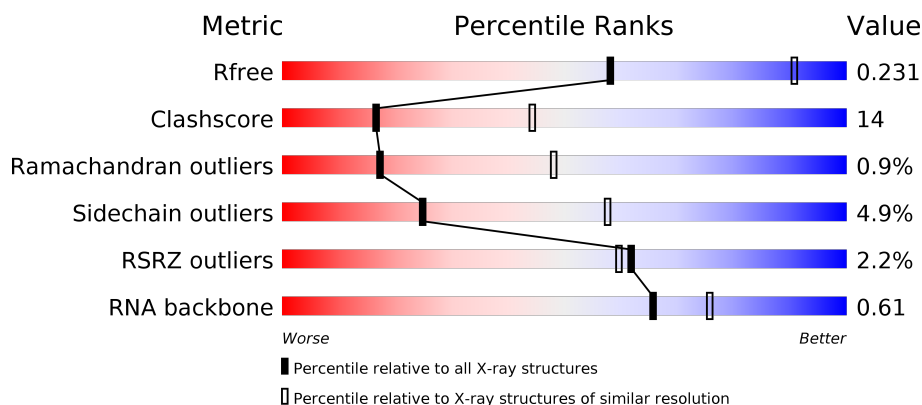
1 Overall quality at a glance

The following experimental techniques were used to determine the structure:

X-RAY DIFFRACTION

The reported resolution of this entry is 2.90 Å.

Percentile scores (ranging between 0-100) for global validation metrics of the entry are shown in the following graphic. The table shows the number of entries on which the scores are based.



Metric	Whole archive (#Entries)	Similar resolution (#Entries, resolution range(Å))
R_{free}	130704	1957 (2.90-2.90)
Clashscore	141614	2172 (2.90-2.90)
Ramachandran outliers	138981	2115 (2.90-2.90)
Sidechain outliers	138945	2117 (2.90-2.90)
RSRZ outliers	127900	1906 (2.90-2.90)
RNA backbone	3102	1007 (3.16-2.64)

The table below summarises the geometric issues observed across the polymeric chains and their fit to the electron density. The red, orange, yellow and green segments on the lower bar indicate the fraction of residues that contain outliers for ≥ 3 , 2, 1 and 0 types of geometric quality criteria respectively. A grey segment represents the fraction of residues that are not modelled. The numeric value for each fraction is indicated below the corresponding segment, with a dot representing fractions $\leq 5\%$. The upper red bar (where present) indicates the fraction of residues that have poor fit to the electron density. The numeric value is given above the bar.

Mol	Chain	Length	Quality of chain
1	E	20	
1	F	20	
2	A	386	
2	B	386	

Continued on next page...

Continued from previous page...

Mol	Chain	Length	Quality of chain
2	C	386	<div> <div></div> <div>70%</div> <div>25%</div> <div>..</div> </div>
2	D	386	<div> <div></div> <div>66%</div> <div>27%</div> <div>..</div> </div>

2 Entry composition [i](#)

There are 5 unique types of molecules in this entry. The entry contains 12672 atoms, of which 0 are hydrogens and 0 are deuteriums.

In the tables below, the ZeroOcc column contains the number of atoms modelled with zero occupancy, the AltConf column contains the number of residues with at least one atom in alternate conformation and the Trace column contains the number of residues modelled with at most 2 atoms.

- Molecule 1 is a RNA chain called RNA (5'-R(*AP*GP*CP*AP*CP*GP*GP*CP*UP*(N)P*UP*AP*AP*AP*CP*CP*GP*UP*GP*C)-3').

Mol	Chain	Residues	Atoms					ZeroOcc	AltConf	Trace
1	E	20	Total	C	N	O	P	0	0	0
			414	186	74	135	19			
1	F	20	Total	C	N	O	P	0	0	0
			414	186	74	135	19			

- Molecule 2 is a protein called Queuine tRNA-ribosyltransferase.

Mol	Chain	Residues	Atoms					ZeroOcc	AltConf	Trace
2	A	376	Total	C	N	O	S	0	0	0
			2933	1833	534	545	21			
2	B	372	Total	C	N	O	S	0	0	0
			2902	1817	526	538	21			
2	C	376	Total	C	N	O	S	0	0	0
			2933	1833	534	545	21			
2	D	372	Total	C	N	O	S	0	0	0
			2902	1817	526	538	21			

There are 4 discrepancies between the modelled and reference sequences:

Chain	Residue	Modelled	Actual	Comment	Reference
A	1	MET	-	INITIATING METHIONINE	UNP P28720
B	1	MET	-	INITIATING METHIONINE	UNP P28720
C	1	MET	-	INITIATING METHIONINE	UNP P28720
D	1	MET	-	INITIATING METHIONINE	UNP P28720

- Molecule 3 is ZINC ION (three-letter code: ZN) (formula: Zn).

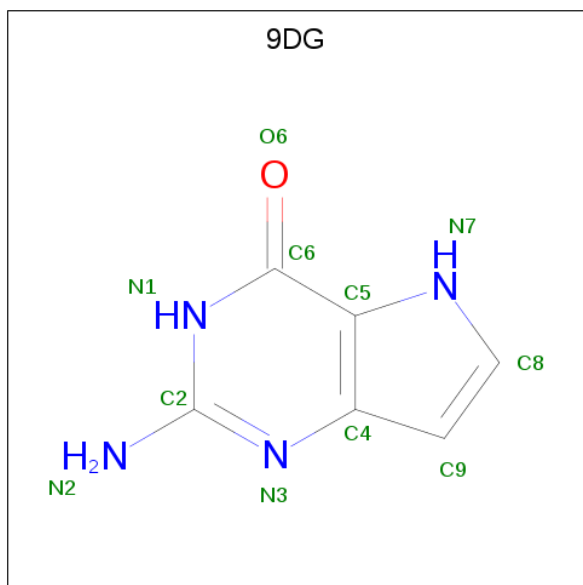
Mol	Chain	Residues	Atoms		ZeroOcc	AltConf
3	B	1	Total	Zn	0	0
			1	1		

Continued on next page...

Continued from previous page...

Mol	Chain	Residues	Atoms		ZeroOcc	AltConf
3	A	1	Total	Zn	0	0
			1	1		
3	D	1	Total	Zn	0	0
			1	1		
3	C	1	Total	Zn	0	0
			1	1		

- Molecule 4 is 9-DEAZAGUANINE (three-letter code: 9DG) (formula: $C_6H_6N_4O$).



Mol	Chain	Residues	Atoms				ZeroOcc	AltConf
4	A	1	Total	C	N	O	0	0
			11	6	4	1		
4	B	1	Total	C	N	O	0	0
			11	6	4	1		
4	C	1	Total	C	N	O	0	0
			11	6	4	1		
4	D	1	Total	C	N	O	0	0
			11	6	4	1		

- Molecule 5 is water.

Mol	Chain	Residues	Atoms		ZeroOcc	AltConf
5	E	8	Total	O	0	0
			8	8		
5	F	5	Total	O	0	0
			5	5		

Continued on next page...

Continued from previous page...

Mol	Chain	Residues	Atoms		ZeroOcc	AltConf
5	A	39	Total 39	O 39	0	0
5	B	17	Total 17	O 17	0	0
5	C	31	Total 31	O 31	0	0
5	D	26	Total 26	O 26	0	0

3 Residue-property plots

These plots are drawn for all protein, RNA, DNA and oligosaccharide chains in the entry. The first graphic for a chain summarises the proportions of the various outlier classes displayed in the second graphic. The second graphic shows the sequence view annotated by issues in geometry and electron density. Residues are color-coded according to the number of geometric quality criteria for which they contain at least one outlier: green = 0, yellow = 1, orange = 2 and red = 3 or more. A red dot above a residue indicates a poor fit to the electron density ($RSRZ > 2$). Stretches of 2 or more consecutive residues without any outlier are shown as a green connector. Residues present in the sample, but not in the model, are shown in grey.

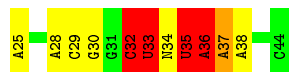
- Molecule 1: RNA (5'-R(*AP*GP*CP*AP*CP*GP*GP*CP*UP*(N)P*UP*AP*AP*AP*CP*CP*GP*UP*GP*C)-3')

Chain E: 



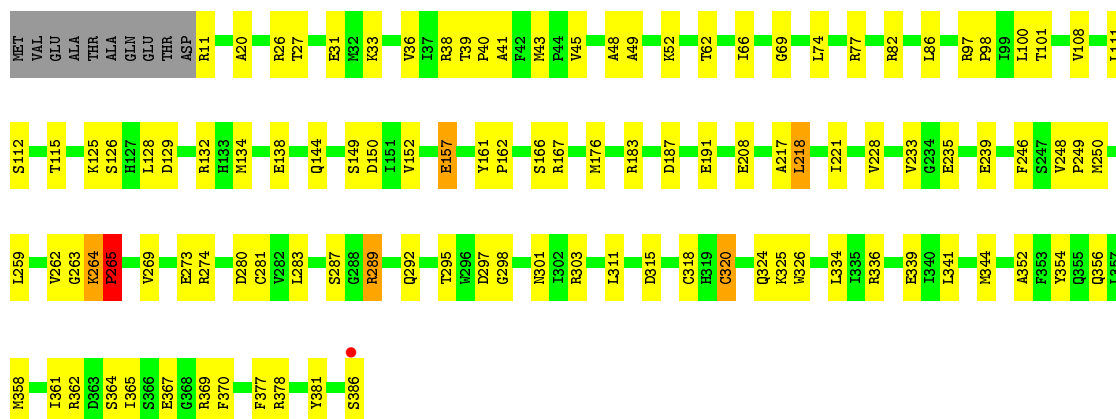
- Molecule 1: RNA (5'-R(*AP*GP*CP*AP*CP*GP*GP*CP*UP*(N)P*UP*AP*AP*AP*CP*CP*GP*UP*GP*C)-3')

Chain F: 



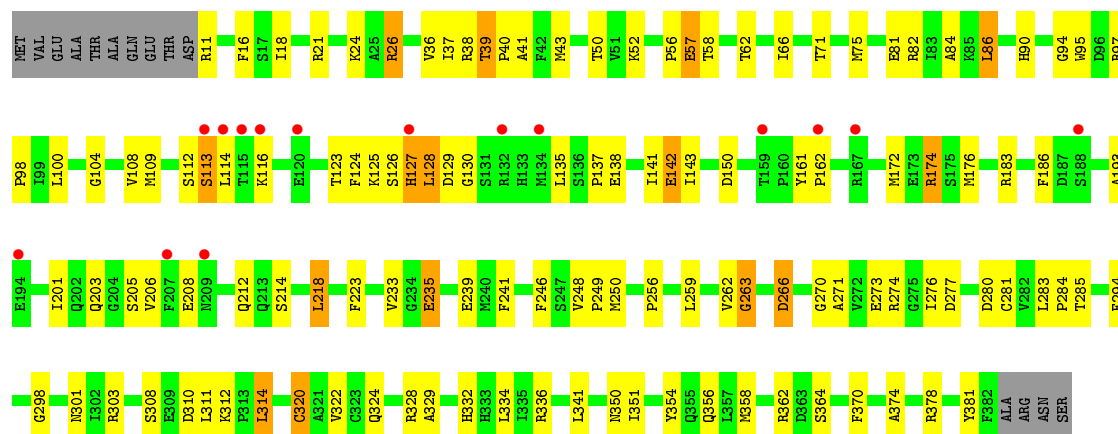
- Molecule 2: Queuine tRNA-ribosyltransferase

Chain A: 

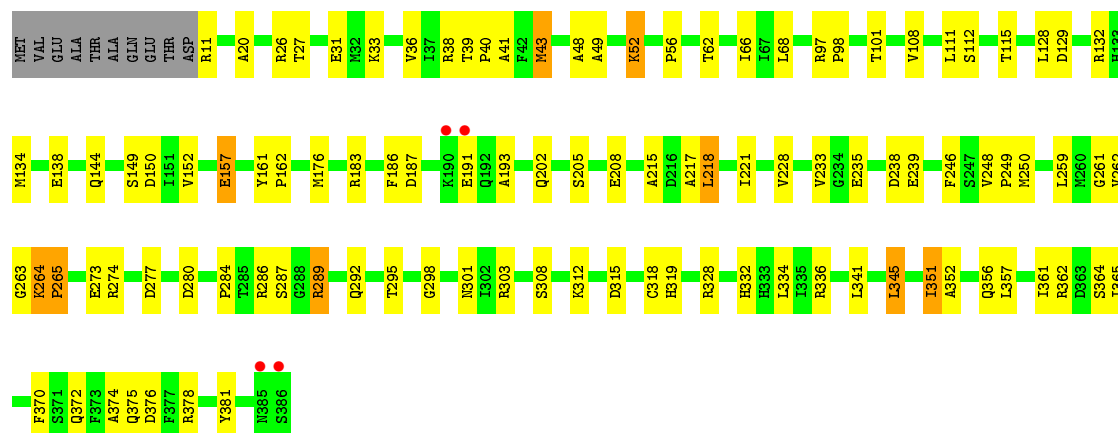


- Molecule 2: Queuine tRNA-ribosyltransferase

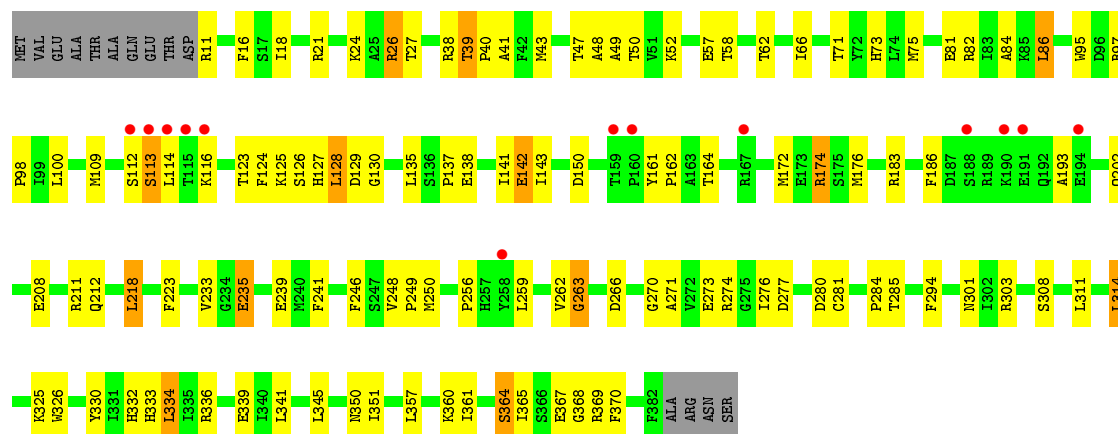
Chain B: 



• Molecule 2: Queuine tRNA-ribosyltransferase



• Molecule 2: Queuine tRNA-ribosyltransferase



4 Data and refinement statistics

Property	Value	Source
Space group	I 4	Depositor
Cell constants a, b, c, α , β , γ	264.86Å 264.86Å 55.91Å 90.00° 90.00° 90.00°	Depositor
Resolution (Å)	30.00 – 2.90 29.61 – 2.90	Depositor EDS
% Data completeness (in resolution range)	91.9 (30.00-2.90) 97.1 (29.61-2.90)	Depositor EDS
R_{merge}	0.07	Depositor
R_{sym}	(Not available)	Depositor
$\langle I/\sigma(I) \rangle$ ¹	5.79 (at 2.90Å)	Xtriage
Refinement program	CNS 1.1	Depositor
R, R_{free}	0.181 , 0.230 0.185 , 0.231	Depositor DCC
R_{free} test set	3534 reflections (8.11%)	wwPDB-VP
Wilson B-factor (Å ²)	33.8	Xtriage
Anisotropy	0.038	Xtriage
Bulk solvent k_{sol} (e/Å ³), B_{sol} (Å ²)	0.35 , 44.5	EDS
L-test for twinning ²	$\langle L \rangle = 0.49$, $\langle L^2 \rangle = 0.32$	Xtriage
Estimated twinning fraction	0.015 for -k,-h,-l	Xtriage
F_o, F_c correlation	0.92	EDS
Total number of atoms	12672	wwPDB-VP
Average B, all atoms (Å ²)	28.0	wwPDB-VP

Xtriage's analysis on translational NCS is as follows: *The largest off-origin peak in the Patterson function is 2.60% of the height of the origin peak. No significant pseudotranslation is detected.*

¹Intensities estimated from amplitudes.

²Theoretical values of $\langle |L| \rangle$, $\langle L^2 \rangle$ for acentric reflections are 0.5, 0.333 respectively for untwinned datasets, and 0.375, 0.2 for perfectly twinned datasets.

5 Model quality

5.1 Standard geometry

Bond lengths and bond angles in the following residue types are not validated in this section: 9DG, ZN

The Z score for a bond length (or angle) is the number of standard deviations the observed value is removed from the expected value. A bond length (or angle) with $|Z| > 5$ is considered an outlier worth inspection. RMSZ is the root-mean-square of all Z scores of the bond lengths (or angles).

Mol	Chain	Bond lengths		Bond angles	
		RMSZ	# Z >5	RMSZ	# Z >5
1	E	0.50	0/448	1.10	5/694 (0.7%)
1	F	0.50	0/448	1.07	8/694 (1.2%)
2	A	0.38	0/2995	0.63	2/4032 (0.0%)
2	B	0.37	0/2964	0.56	0/3992
2	C	0.40	0/2995	0.63	2/4032 (0.0%)
2	D	0.38	0/2964	0.56	0/3992
All	All	0.39	0/12814	0.65	17/17436 (0.1%)

Chiral center outliers are detected by calculating the chiral volume of a chiral center and verifying if the center is modelled as a planar moiety or with the opposite hand. A planarity outlier is detected by checking planarity of atoms in a peptide group, atoms in a mainchain group or atoms of a sidechain that are expected to be planar.

Mol	Chain	#Chirality outliers	#Planarity outliers
1	F	1	0

There are no bond length outliers.

The worst 5 of 17 bond angle outliers are listed below:

Mol	Chain	Res	Type	Atoms	Z	Observed(°)	Ideal(°)
1	E	36	A	C2'-C3'-O3'	9.35	130.06	109.50
2	C	289	ARG	NE-CZ-NH2	-9.12	115.74	120.30
1	E	35	U	C2'-C3'-O3'	8.62	128.46	109.50
1	F	35	U	C2'-C3'-O3'	8.08	127.28	109.50
1	F	37	A	C2'-C3'-O3'	8.02	127.14	109.50

All (1) chirality outliers are listed below:

Mol	Chain	Res	Type	Atom
1	F	35	U	C3'

There are no planarity outliers.

5.2 Too-close contacts ⓘ

In the following table, the Non-H and H(model) columns list the number of non-hydrogen atoms and hydrogen atoms in the chain respectively. The H(added) column lists the number of hydrogen atoms added and optimized by MolProbity. The Clashes column lists the number of clashes within the asymmetric unit, whereas Symm-Clashes lists symmetry related clashes.

Mol	Chain	Non-H	H(model)	H(added)	Clashes	Symm-Clashes
1	E	414	0	215	7	0
1	F	414	0	215	11	0
2	A	2933	0	2877	82	0
2	B	2902	0	2848	102	0
2	C	2933	0	2877	78	0
2	D	2902	0	2848	86	0
3	A	1	0	0	0	0
3	B	1	0	0	0	0
3	C	1	0	0	0	0
3	D	1	0	0	0	0
4	A	11	0	6	0	0
4	B	11	0	6	0	0
4	C	11	0	6	0	0
4	D	11	0	6	0	0
5	A	39	0	0	2	0
5	B	17	0	0	3	0
5	C	31	0	0	2	0
5	D	26	0	0	3	0
5	E	8	0	0	0	0
5	F	5	0	0	2	0
All	All	12672	0	11904	346	0

The all-atom clashscore is defined as the number of clashes found per 1000 atoms (including hydrogen atoms). The all-atom clashscore for this structure is 14.

The worst 5 of 346 close contacts within the same asymmetric unit are listed below, sorted by their clash magnitude.

Atom-1	Atom-2	Interatomic distance (Å)	Clash overlap (Å)
1:E:36:A:H5"	2:A:111:LEU:HD21	1.56	0.87
2:D:334:LEU:HD21	2:D:341:LEU:HD23	1.59	0.84
2:C:112:SER:O	2:C:115:THR:HG22	1.80	0.81
2:A:112:SER:O	2:A:115:THR:HG22	1.81	0.80
2:A:318:CYS:SG	2:A:320:CYS:HB3	2.21	0.79

There are no symmetry-related clashes.

5.3 Torsion angles [i](#)

5.3.1 Protein backbone [i](#)

In the following table, the Percentiles column shows the percent Ramachandran outliers of the chain as a percentile score with respect to all X-ray entries followed by that with respect to entries of similar resolution.

The Analysed column shows the number of residues for which the backbone conformation was analysed, and the total number of residues.

Mol	Chain	Analysed	Favoured	Allowed	Outliers	Percentiles	
2	A	374/386 (97%)	352 (94%)	20 (5%)	2 (0%)	29	61
2	B	370/386 (96%)	347 (94%)	20 (5%)	3 (1%)	19	51
2	C	374/386 (97%)	353 (94%)	18 (5%)	3 (1%)	19	51
2	D	370/386 (96%)	344 (93%)	21 (6%)	5 (1%)	11	36
All	All	1488/1544 (96%)	1396 (94%)	79 (5%)	13 (1%)	17	48

5 of 13 Ramachandran outliers are listed below:

Mol	Chain	Res	Type
2	A	264	LYS
2	C	264	LYS
2	D	52	LYS
2	A	265	PRO
2	B	52	LYS

5.3.2 Protein sidechains [i](#)

In the following table, the Percentiles column shows the percent sidechain outliers of the chain as a percentile score with respect to all X-ray entries followed by that with respect to entries of similar resolution.

The Analysed column shows the number of residues for which the sidechain conformation was analysed, and the total number of residues.

Mol	Chain	Analysed	Rotameric	Outliers	Percentiles	
2	A	307/315 (98%)	296 (96%)	11 (4%)	35	69
2	B	304/315 (96%)	287 (94%)	17 (6%)	21	52
2	C	307/315 (98%)	293 (95%)	14 (5%)	27	60

Continued on next page...

Continued from previous page...

Mol	Chain	Analysed	Rotameric	Outliers	Percentiles	
2	D	304/315 (96%)	286 (94%)	18 (6%)	19	49
All	All	1222/1260 (97%)	1162 (95%)	60 (5%)	25	57

5 of 60 residues with a non-rotameric sidechain are listed below:

Mol	Chain	Res	Type
2	B	356	GLN
2	C	191	GLU
2	D	280	ASP
2	C	134	MET
2	C	238	ASP

Some sidechains can be flipped to improve hydrogen bonding and reduce clashes. 5 of 20 such sidechains are listed below:

Mol	Chain	Res	Type
2	B	324	GLN
2	B	350	ASN
2	D	127	HIS
2	B	203	GLN
2	B	257	HIS

5.3.3 RNA ⓘ

Mol	Chain	Analysed	Backbone Outliers	Pucker Outliers
1	E	18/20 (90%)	3 (16%)	3 (16%)
1	F	18/20 (90%)	6 (33%)	2 (11%)
All	All	36/40 (90%)	9 (25%)	5 (13%)

5 of 9 RNA backbone outliers are listed below:

Mol	Chain	Res	Type
1	E	35	U
1	E	36	A
1	E	37	A
1	F	32	C
1	F	33	U

All (5) RNA pucker outliers are listed below:

Mol	Chain	Res	Type
1	E	33	U
1	E	35	U
1	E	36	A
1	F	35	U
1	F	37	A

5.4 Non-standard residues in protein, DNA, RNA chains [i](#)

There are no non-standard protein/DNA/RNA residues in this entry.

5.5 Carbohydrates [i](#)

There are no monosaccharides in this entry.

5.6 Ligand geometry [i](#)

Of 8 ligands modelled in this entry, 4 are monoatomic - leaving 4 for Mogul analysis.

In the following table, the Counts columns list the number of bonds (or angles) for which Mogul statistics could be retrieved, the number of bonds (or angles) that are observed in the model and the number of bonds (or angles) that are defined in the Chemical Component Dictionary. The Link column lists molecule types, if any, to which the group is linked. The Z score for a bond length (or angle) is the number of standard deviations the observed value is removed from the expected value. A bond length (or angle) with $|Z| > 2$ is considered an outlier worth inspection. RMSZ is the root-mean-square of all Z scores of the bond lengths (or angles).

Mol	Type	Chain	Res	Link	Bond lengths			Bond angles		
					Counts	RMSZ	# $ Z > 2$	Counts	RMSZ	# $ Z > 2$
4	9DG	D	387	-	10,12,12	2.18	3 (30%)	9,17,17	2.66	4 (44%)
4	9DG	A	387	-	10,12,12	2.11	3 (30%)	9,17,17	2.60	4 (44%)
4	9DG	C	387	-	10,12,12	2.22	3 (30%)	9,17,17	2.66	4 (44%)
4	9DG	B	387	-	10,12,12	2.19	3 (30%)	9,17,17	2.65	4 (44%)

In the following table, the Chirals column lists the number of chiral outliers, the number of chiral centers analysed, the number of these observed in the model and the number defined in the Chemical Component Dictionary. Similar counts are reported in the Torsion and Rings columns. '-' means no outliers of that kind were identified.

Mol	Type	Chain	Res	Link	Chirals	Torsions	Rings
4	9DG	D	387	-	-	-	0/2/2/2
4	9DG	A	387	-	-	-	0/2/2/2

Continued on next page...

Continued from previous page...

Mol	Type	Chain	Res	Link	Chirals	Torsions	Rings
4	9DG	C	387	-	-	-	0/2/2/2
4	9DG	B	387	-	-	-	0/2/2/2

The worst 5 of 12 bond length outliers are listed below:

Mol	Chain	Res	Type	Atoms	Z	Observed(Å)	Ideal(Å)
4	C	387	9DG	C6-N1	5.13	1.42	1.33
4	B	387	9DG	C6-N1	5.05	1.41	1.33
4	D	387	9DG	C6-N1	4.94	1.41	1.33
4	A	387	9DG	C6-N1	4.74	1.41	1.33
4	D	387	9DG	C2-N1	3.72	1.42	1.35

The worst 5 of 16 bond angle outliers are listed below:

Mol	Chain	Res	Type	Atoms	Z	Observed(°)	Ideal(°)
4	C	387	9DG	N3-C2-N1	-5.58	119.78	127.22
4	D	387	9DG	N3-C2-N1	-5.56	119.81	127.22
4	B	387	9DG	N3-C2-N1	-5.51	119.87	127.22
4	A	387	9DG	N3-C2-N1	-5.38	120.05	127.22
4	B	387	9DG	C5-C6-N1	-3.13	119.15	123.43

There are no chirality outliers.

There are no torsion outliers.

There are no ring outliers.

No monomer is involved in short contacts.

5.7 Other polymers [i](#)

There are no such residues in this entry.

5.8 Polymer linkage issues [i](#)

There are no chain breaks in this entry.

6 Fit of model and data ⓘ

6.1 Protein, DNA and RNA chains ⓘ

In the following table, the column labelled ‘#RSRZ> 2’ contains the number (and percentage) of RSRZ outliers, followed by percent RSRZ outliers for the chain as percentile scores relative to all X-ray entries and entries of similar resolution. The OWAB column contains the minimum, median, 95th percentile and maximum values of the occupancy-weighted average B-factor per residue. The column labelled ‘Q< 0.9’ lists the number of (and percentage) of residues with an average occupancy less than 0.9.

Mol	Chain	Analysed	<RSRZ>	#RSRZ>2	OWAB(Å ²)	Q<0.9
1	E	19/20 (95%)	-0.02	0 100 100	12, 20, 31, 37	0
1	F	19/20 (95%)	0.07	0 100 100	12, 22, 37, 44	0
2	A	376/386 (97%)	-0.38	1 (0%) 94 94	7, 21, 35, 48	0
2	B	372/386 (96%)	0.08	15 (4%) 38 33	11, 37, 59, 79	0
2	C	376/386 (97%)	-0.35	4 (1%) 80 80	7, 22, 36, 59	0
2	D	372/386 (96%)	-0.01	13 (3%) 44 38	6, 32, 57, 79	0
All	All	1534/1584 (96%)	-0.16	33 (2%) 62 59	6, 27, 54, 79	0

The worst 5 of 33 RSRZ outliers are listed below:

Mol	Chain	Res	Type	RSRZ
2	D	114	LEU	5.3
2	D	113	SER	4.8
2	B	114	LEU	4.7
2	B	115	THR	4.0
2	C	386	SER	3.8

6.2 Non-standard residues in protein, DNA, RNA chains ⓘ

There are no non-standard protein/DNA/RNA residues in this entry.

6.3 Carbohydrates ⓘ

There are no monosaccharides in this entry.

6.4 Ligands [i](#)

In the following table, the Atoms column lists the number of modelled atoms in the group and the number defined in the chemical component dictionary. The B-factors column lists the minimum, median, 95th percentile and maximum values of B factors of atoms in the group. The column labelled 'Q< 0.9' lists the number of atoms with occupancy less than 0.9.

Mol	Type	Chain	Res	Atoms	RSCC	RSR	B-factors(Å ²)	Q<0.9
4	9DG	B	387	11/11	0.81	0.35	83,84,85,85	0
4	9DG	D	387	11/11	0.93	0.22	44,45,45,47	0
4	9DG	C	387	11/11	0.97	0.20	16,20,21,24	0
4	9DG	A	387	11/11	0.98	0.18	12,13,13,15	0
3	ZN	D	404	1/1	0.99	0.07	19,19,19,19	0
3	ZN	A	401	1/1	0.99	0.04	19,19,19,19	0
3	ZN	C	403	1/1	0.99	0.04	25,25,25,25	0
3	ZN	B	402	1/1	1.00	0.07	22,22,22,22	0

6.5 Other polymers [i](#)

There are no such residues in this entry.