



# Full wwPDB X-ray Structure Validation Report ⓘ

May 23, 2020 – 06:16 am BST

PDB ID : 3Q2D  
Title : Optimization of the in silico designed Kemp eliminase KE70 by computational design and directed evolution  
Authors : Khersonsky, O.; Rothlisberge, D.; Wollacott, A.M.; Murphy, P.; Dym, O.; Albeck, S.; Kiss, G.; Houk, K.N.; Baker, D.; Tawfik, D.S.; Israel Structural Proteomics Center (ISPC)  
Deposited on : 2010-12-20  
Resolution : 2.19 Å(reported)

This is a Full wwPDB X-ray Structure Validation Report for a publicly released PDB entry.

We welcome your comments at [validation@mail.wwpdb.org](mailto:validation@mail.wwpdb.org)

A user guide is available at

<https://www.wwpdb.org/validation/2017/XrayValidationReportHelp>

with specific help available everywhere you see the ⓘ symbol.

---

The following versions of software and data (see [references ⓘ](#)) were used in the production of this report:

MolProbity : 4.02b-467  
Mogul : 1.8.5 (274361), CSD as541be (2020)  
Xtriage (Phenix) : 1.13  
EDS : 2.11  
Percentile statistics : 20191225.v01 (using entries in the PDB archive December 25th 2019)  
Refmac : 5.8.0158  
CCP4 : 7.0.044 (Gargrove)  
Ideal geometry (proteins) : Engh & Huber (2001)  
Ideal geometry (DNA, RNA) : Parkinson et al. (1996)  
Validation Pipeline (wwPDB-VP) : 2.11

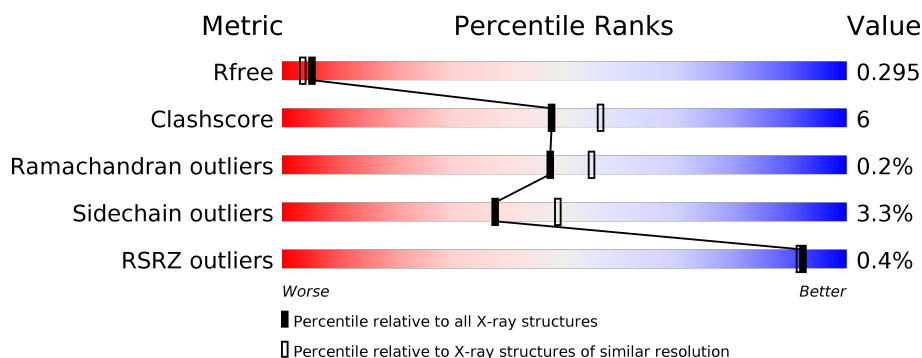
# 1 Overall quality at a glance

The following experimental techniques were used to determine the structure:

## *X-RAY DIFFRACTION*

The reported resolution of this entry is 2.19 Å.

Percentile scores (ranging between 0-100) for global validation metrics of the entry are shown in the following graphic. The table shows the number of entries on which the scores are based.



Metric	Whole archive (#Entries)	Similar resolution (#Entries, resolution range(Å))
$R_{free}$	130704	4898 (2.20-2.20)
Clashscore	141614	5594 (2.20-2.20)
Ramachandran outliers	138981	5503 (2.20-2.20)
Sidechain outliers	138945	5504 (2.20-2.20)
RSRZ outliers	127900	4800 (2.20-2.20)

The table below summarises the geometric issues observed across the polymeric chains and their fit to the electron density. The red, orange, yellow and green segments on the lower bar indicate the fraction of residues that contain outliers for  $\geq 3$ , 2, 1 and 0 types of geometric quality criteria respectively. A grey segment represents the fraction of residues that are not modelled. The numeric value for each fraction is indicated below the corresponding segment, with a dot representing fractions  $\leq 5\%$ . The upper red bar (where present) indicates the fraction of residues that have poor fit to the electron density. The numeric value is given above the bar.

Mol	Chain	Length	Quality of chain
1	A	272	 74% 15% 10%
1	B	272	 77% 6% 17%

The following table lists non-polymeric compounds, carbohydrate monomers and non-standard residues in protein, DNA, RNA chains that are outliers for geometric or electron-density-fit criteria:

Mol	Type	Chain	Res	Chirality	Geometry	Clashes	Electron density
2	3NY	A	273	-	-	X	-

## 2 Entry composition [i](#)

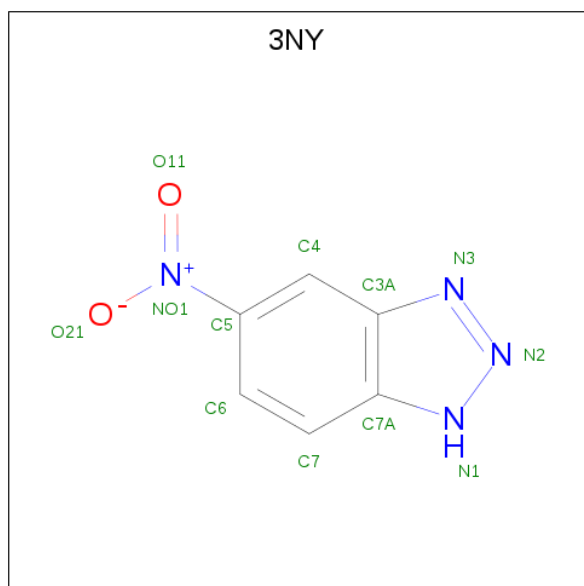
There are 3 unique types of molecules in this entry. The entry contains 3512 atoms, of which 0 are hydrogens and 0 are deuteriums.

In the tables below, the ZeroOcc column contains the number of atoms modelled with zero occupancy, the AltConf column contains the number of residues with at least one atom in alternate conformation and the Trace column contains the number of residues modelled with at most 2 atoms.

- Molecule 1 is a protein called Deoxyribose phosphate aldolase.

Mol	Chain	Residues	Atoms					ZeroOcc	AltConf	Trace
1	A	246	Total	C	N	O	S	0	0	0
			1805	1144	302	350	9			
1	B	227	Total	C	N	O	S	0	0	0
			1649	1049	279	313	8			

- Molecule 2 is 5-nitro-1H-benzotriazole (three-letter code: 3NY) (formula: C<sub>6</sub>H<sub>4</sub>N<sub>4</sub>O<sub>2</sub>).



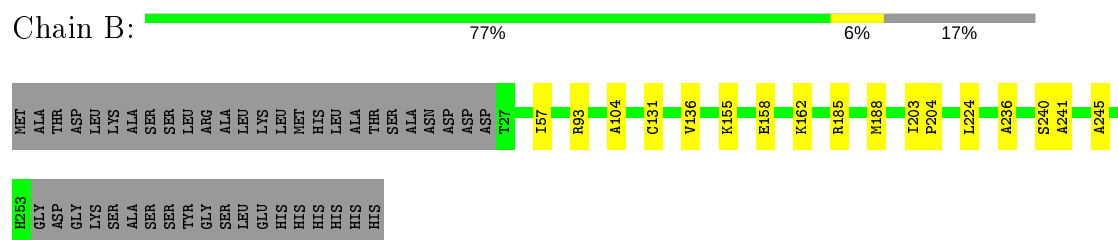
Mol	Chain	Residues	Atoms				ZeroOcc	AltConf
2	A	1	Total	C	N	O	0	0
			12	6	4	2		
2	B	1	Total	C	N	O	0	0
			12	6	4	2		

- Molecule 3 is water.

Mol	Chain	Residues	Atoms		ZeroOcc	AltConf
3	A	15	Total 15	O 15	0	0
3	B	19	Total 19	O 19	0	0



- Molecule 1: Deoxyribose phosphate aldolase



## 4 Data and refinement statistics

Property	Value	Source
Space group	P 1 21 1	Depositor
Cell constants a, b, c, $\alpha$ , $\beta$ , $\gamma$	48.84Å 41.31Å 138.78Å 90.00° 95.36° 90.00°	Depositor
Resolution (Å)	50.00 – 2.19 46.06 – 2.19	Depositor EDS
% Data completeness (in resolution range)	95.9 (50.00-2.19) 95.9 (46.06-2.19)	Depositor EDS
$R_{merge}$	0.09	Depositor
$R_{sym}$	(Not available)	Depositor
$\langle I/\sigma(I) \rangle$ <sup>1</sup>	2.92 (at 2.20Å)	Xtriage
Refinement program	REFMAC 5.5.0102	Depositor
R, $R_{free}$	0.218 , 0.272 0.237 , 0.295	Depositor DCC
$R_{free}$ test set	1403 reflections (5.06%)	wwPDB-VP
Wilson B-factor (Å <sup>2</sup> )	33.4	Xtriage
Anisotropy	0.203	Xtriage
Bulk solvent $k_{sol}$ (e/Å <sup>3</sup> ), $B_{sol}$ (Å <sup>2</sup> )	0.36 , 34.2	EDS
L-test for twinning <sup>2</sup>	$\langle  L  \rangle = 0.48$ , $\langle L^2 \rangle = 0.31$	Xtriage
Estimated twinning fraction	No twinning to report.	Xtriage
$F_o, F_c$ correlation	0.91	EDS
Total number of atoms	3512	wwPDB-VP
Average B, all atoms (Å <sup>2</sup> )	28.0	wwPDB-VP

Xtriage's analysis on translational NCS is as follows: *The largest off-origin peak in the Patterson function is 6.50% of the height of the origin peak. No significant pseudotranslation is detected.*

<sup>1</sup>Intensities estimated from amplitudes.

<sup>2</sup>Theoretical values of  $\langle |L| \rangle$ ,  $\langle L^2 \rangle$  for acentric reflections are 0.5, 0.333 respectively for untwinned datasets, and 0.375, 0.2 for perfectly twinned datasets.

## 5 Model quality

### 5.1 Standard geometry

Bond lengths and bond angles in the following residue types are not validated in this section: 3NY

The Z score for a bond length (or angle) is the number of standard deviations the observed value is removed from the expected value. A bond length (or angle) with  $|Z| > 5$  is considered an outlier worth inspection. RMSZ is the root-mean-square of all Z scores of the bond lengths (or angles).

Mol	Chain	Bond lengths		Bond angles	
		RMSZ	$\# Z  > 5$	RMSZ	$\# Z  > 5$
1	A	1.19	2/1830 (0.1%)	1.02	4/2485 (0.2%)
1	B	1.11	1/1675 (0.1%)	0.97	1/2279 (0.0%)
All	All	1.15	3/3505 (0.1%)	0.99	5/4764 (0.1%)

All (3) bond length outliers are listed below:

Mol	Chain	Res	Type	Atoms	Z	Observed(Å)	Ideal(Å)
1	B	245	ALA	CA-CB	5.66	1.64	1.52
1	A	146	GLU	CG-CD	5.47	1.60	1.51
1	A	100	ALA	CA-CB	5.11	1.63	1.52

All (5) bond angle outliers are listed below:

Mol	Chain	Res	Type	Atoms	Z	Observed(°)	Ideal(°)
1	A	59	ARG	NE-CZ-NH2	-8.25	116.17	120.30
1	A	110	ARG	NE-CZ-NH2	-6.53	117.03	120.30
1	A	28	ASP	CB-CG-OD1	6.11	123.80	118.30
1	B	185	ARG	NE-CZ-NH1	5.51	123.06	120.30
1	A	193	ASP	CB-CG-OD2	5.34	123.11	118.30

There are no chirality outliers.

There are no planarity outliers.

### 5.2 Too-close contacts

In the following table, the Non-H and H(model) columns list the number of non-hydrogen atoms and hydrogen atoms in the chain respectively. The H(added) column lists the number of hydrogen atoms added and optimized by MolProbity. The Clashes column lists the number of clashes within the asymmetric unit, whereas Symm-Clashes lists symmetry related clashes.



Mol	Chain	Non-H	H(model)	H(added)	Clashes	Symm-Clashes
1	A	1805	0	1801	32	0
1	B	1649	0	1636	10	0
2	A	12	0	4	13	0
2	B	12	0	4	1	0
3	A	15	0	0	0	0
3	B	19	0	0	3	0
All	All	3512	0	3445	42	0

The all-atom clashscore is defined as the number of clashes found per 1000 atoms (including hydrogen atoms). The all-atom clashscore for this structure is 6.

All (42) close contacts within the same asymmetric unit are listed below, sorted by their clash magnitude.

Atom-1	Atom-2	Interatomic distance (Å)	Clash overlap (Å)
1:A:17:HIS:ND1	2:A:273:3NY:H6	1.58	1.16
1:A:17:HIS:ND1	2:A:273:3NY:C6	2.30	0.94
1:A:139:ALA:CB	2:A:273:3NY:O11	2.20	0.89
1:A:139:ALA:HB3	2:A:273:3NY:O11	1.78	0.83
1:A:17:HIS:CB	2:A:273:3NY:H7	2.11	0.80
1:A:17:HIS:CE1	2:A:273:3NY:H6	2.16	0.80
1:A:26:ASP:HB3	1:A:54:PHE:CE2	2.27	0.69
1:A:20:THR:O	1:A:21:SER:HB2	1.95	0.66
1:B:203:ILE:HG12	1:B:236:ALA:HB3	1.79	0.63
1:B:204:PRO:HD2	1:B:236:ALA:O	1.99	0.63
1:A:17:HIS:ND1	2:A:273:3NY:C7	2.62	0.62
1:A:125:LYS:O	1:A:129:GLU:HG3	2.00	0.62
1:A:17:HIS:HB3	2:A:273:3NY:H7	1.83	0.57
1:A:39:LYS:HD2	1:A:67:THR:CG2	2.34	0.57
1:B:104:ALA:HB2	2:B:273:3NY:O11	2.10	0.51
1:A:143:GLU:OE2	1:A:172:THR:HG23	2.09	0.51
1:B:131:CYS:HB3	1:B:136:VAL:O	2.10	0.51
1:B:93:ARG:HD3	3:B:292:HOH:O	2.09	0.51
1:A:17:HIS:CG	2:A:273:3NY:H7	2.47	0.50
1:A:17:HIS:HB2	2:A:273:3NY:H7	1.91	0.50
1:B:188:MET:HE2	3:B:278:HOH:O	2.12	0.49
1:A:11:ARG:HD3	1:A:218:LEU:HD13	1.94	0.49
1:A:139:ALA:HB2	2:A:273:3NY:O11	2.07	0.48
1:A:17:HIS:ND1	2:A:273:3NY:H7	2.29	0.47
1:A:145:GLY:O	1:A:148:LYS:HE3	2.15	0.47
1:B:188:MET:HB3	1:B:224:LEU:HD12	1.97	0.47
1:A:15:LEU:CD2	1:A:232:ALA:HA	2.46	0.46
1:A:76:THR:HG21	1:A:92:THR:HA	1.99	0.45

*Continued on next page...*

Continued from previous page...

Atom-1	Atom-2	Interatomic distance (Å)	Clash overlap (Å)
1:A:202:PHE:CE2	1:A:204:PRO:HD3	2.52	0.45
1:A:53:ARG:HA	1:A:98:TYR:CZ	2.52	0.45
1:A:104:ALA:HB2	2:A:273:3NY:H4	1.98	0.44
1:A:15:LEU:HD22	1:A:232:ALA:HA	1.98	0.44
1:A:170:THR:HG23	1:A:204:PRO:HA	2.00	0.44
1:B:158:GLU:HG2	1:B:162:LYS:HE3	1.98	0.44
1:A:192:ARG:HD3	1:A:224:LEU:HD22	1.99	0.44
1:B:188:MET:CE	3:B:278:HOH:O	2.64	0.43
1:A:75:SER:HB2	1:A:78:PHE:CD2	2.54	0.42
1:A:92:THR:HG23	1:A:103:VAL:HG11	2.01	0.42
1:A:143:GLU:OE2	1:A:172:THR:CG2	2.67	0.42
1:B:240:SER:HB2	1:B:241:ALA:H	1.66	0.41
1:A:233:ARG:HD2	1:A:233:ARG:O	2.21	0.40
1:A:57:ILE:HD12	1:A:57:ILE:HA	1.94	0.40

There are no symmetry-related clashes.

## 5.3 Torsion angles [i](#)

### 5.3.1 Protein backbone [i](#)

In the following table, the Percentiles column shows the percent Ramachandran outliers of the chain as a percentile score with respect to all X-ray entries followed by that with respect to entries of similar resolution.

The Analysed column shows the number of residues for which the backbone conformation was analysed, and the total number of residues.

Mol	Chain	Analysed	Favoured	Allowed	Outliers	Percentiles	
1	A	242/272 (89%)	232 (96%)	9 (4%)	1 (0%)	34	37
1	B	225/272 (83%)	216 (96%)	9 (4%)	0	100	100
All	All	467/544 (86%)	448 (96%)	18 (4%)	1 (0%)	47	55

All (1) Ramachandran outliers are listed below:

Mol	Chain	Res	Type
1	A	20	THR

### 5.3.2 Protein sidechains ⓘ

In the following table, the Percentiles column shows the percent sidechain outliers of the chain as a percentile score with respect to all X-ray entries followed by that with respect to entries of similar resolution.

The Analysed column shows the number of residues for which the sidechain conformation was analysed, and the total number of residues.

Mol	Chain	Analysed	Rotameric	Outliers	Percentiles	
1	A	179/208 (86%)	170 (95%)	9 (5%)	24	30
1	B	159/208 (76%)	157 (99%)	2 (1%)	69	81
All	All	338/416 (81%)	327 (97%)	11 (3%)	38	49

All (11) residues with a non-rotameric sidechain are listed below:

Mol	Chain	Res	Type
1	A	4	ASP
1	A	5	LEU
1	A	11	ARG
1	A	20	THR
1	A	21	SER
1	A	150	GLU
1	A	181	PRO
1	A	183	SER
1	A	242	SER
1	B	57	ILE
1	B	155	LYS

Some sidechains can be flipped to improve hydrogen bonding and reduce clashes. There are no such sidechains identified.

### 5.3.3 RNA ⓘ

There are no RNA molecules in this entry.

## 5.4 Non-standard residues in protein, DNA, RNA chains ⓘ

There are no non-standard protein/DNA/RNA residues in this entry.

## 5.5 Carbohydrates

There are no carbohydrates in this entry.

## 5.6 Ligand geometry

2 ligands are modelled in this entry.

In the following table, the Counts columns list the number of bonds (or angles) for which Mogul statistics could be retrieved, the number of bonds (or angles) that are observed in the model and the number of bonds (or angles) that are defined in the Chemical Component Dictionary. The Link column lists molecule types, if any, to which the group is linked. The Z score for a bond length (or angle) is the number of standard deviations the observed value is removed from the expected value. A bond length (or angle) with  $|Z| > 2$  is considered an outlier worth inspection. RMSZ is the root-mean-square of all Z scores of the bond lengths (or angles).

Mol	Type	Chain	Res	Link	Bond lengths			Bond angles		
					Counts	RMSZ	$\# Z  > 2$	Counts	RMSZ	$\# Z  > 2$
2	3NY	A	273	-	8,13,13	4.65	4 (50%)	10,18,18	1.80	4 (40%)
2	3NY	B	273	-	8,13,13	4.63	4 (50%)	10,18,18	1.81	4 (40%)

In the following table, the Chirals column lists the number of chiral outliers, the number of chiral centers analysed, the number of these observed in the model and the number defined in the Chemical Component Dictionary. Similar counts are reported in the Torsion and Rings columns. '-' means no outliers of that kind were identified.

Mol	Type	Chain	Res	Link	Chirals	Torsions	Rings
2	3NY	A	273	-	-	0/2/4/4	0/2/2/2
2	3NY	B	273	-	-	0/2/4/4	0/2/2/2

All (8) bond length outliers are listed below:

Mol	Chain	Res	Type	Atoms	Z	Observed(Å)	Ideal(Å)
2	A	273	3NY	O11-NO1	11.84	1.42	1.22
2	B	273	3NY	O11-NO1	11.81	1.42	1.22
2	A	273	3NY	C5-NO1	-4.51	1.34	1.45
2	B	273	3NY	C5-NO1	-4.49	1.34	1.45
2	A	273	3NY	C4-C5	2.06	1.41	1.36
2	B	273	3NY	C7-C6	2.06	1.40	1.36
2	B	273	3NY	C4-C5	2.05	1.41	1.36
2	A	273	3NY	C7-C6	2.04	1.40	1.36

All (8) bond angle outliers are listed below:

Mol	Chain	Res	Type	Atoms	Z	Observed(°)	Ideal(°)
2	B	273	3NY	C4-C3A-N3	2.68	134.86	130.51
2	A	273	3NY	C4-C3A-N3	2.66	134.82	130.51
2	B	273	3NY	C6-C7-C7A	-2.54	117.64	120.84
2	A	273	3NY	C6-C7-C7A	-2.53	117.65	120.84
2	B	273	3NY	C7-C7A-N1	2.34	134.00	130.19
2	A	273	3NY	C7-C7A-N1	2.33	133.98	130.19
2	B	273	3NY	N3-N2-N1	2.20	114.11	111.25
2	A	273	3NY	N3-N2-N1	2.19	114.09	111.25

There are no chirality outliers.

There are no torsion outliers.

There are no ring outliers.

2 monomers are involved in 14 short contacts:

Mol	Chain	Res	Type	Clashes	Symm-Clashes
2	A	273	3NY	13	0
2	B	273	3NY	1	0

## 5.7 Other polymers [i](#)

There are no such residues in this entry.

## 5.8 Polymer linkage issues [i](#)

There are no chain breaks in this entry.

## 6 Fit of model and data [i](#)

### 6.1 Protein, DNA and RNA chains [i](#)

In the following table, the column labelled ‘#RSRZ> 2’ contains the number (and percentage) of RSRZ outliers, followed by percent RSRZ outliers for the chain as percentile scores relative to all X-ray entries and entries of similar resolution. The OWAB column contains the minimum, median, 95<sup>th</sup> percentile and maximum values of the occupancy-weighted average B-factor per residue. The column labelled ‘Q< 0.9’ lists the number of (and percentage) of residues with an average occupancy less than 0.9.

Mol	Chain	Analysed	<RSRZ>	#RSRZ>2	OWAB(Å <sup>2</sup> )	Q<0.9
1	A	246/272 (90%)	0.10	2 (0%) 86 85	16, 28, 41, 52	0
1	B	227/272 (83%)	-0.01	0 100 100	20, 28, 37, 52	0
All	All	473/544 (86%)	0.05	2 (0%) 92 91	16, 28, 39, 52	0

All (2) RSRZ outliers are listed below:

Mol	Chain	Res	Type	RSRZ
1	A	3	THR	5.6
1	A	21	SER	2.2

### 6.2 Non-standard residues in protein, DNA, RNA chains [i](#)

There are no non-standard protein/DNA/RNA residues in this entry.

### 6.3 Carbohydrates [i](#)

There are no carbohydrates in this entry.

### 6.4 Ligands [i](#)

In the following table, the Atoms column lists the number of modelled atoms in the group and the number defined in the chemical component dictionary. The B-factors column lists the minimum, median, 95<sup>th</sup> percentile and maximum values of B factors of atoms in the group. The column labelled ‘Q< 0.9’ lists the number of atoms with occupancy less than 0.9.

Mol	Type	Chain	Res	Atoms	RSCC	RSR	B-factors(Å <sup>2</sup> )	Q<0.9
2	3NY	A	273	12/12	0.71	0.29	20,20,20,20	0
2	3NY	B	273	12/12	0.78	0.31	20,20,20,20	0

## 6.5 Other polymers

There are no such residues in this entry.