



Full wwPDB X-ray Structure Validation Report ⓘ

Aug 8, 2020 – 10:43 PM BST

PDB ID : 2Q3N
Title : Agglutinin from Abrus Precatorius (APA-I)
Authors : Bagaria, A.; Surendranath, K.; Ramagopal, U.A.; Ramakumar, S.; Karande, A.A.
Deposited on : 2007-05-30
Resolution : 3.50 Å(reported)

This is a Full wwPDB X-ray Structure Validation Report for a publicly released PDB entry.

We welcome your comments at validation@mail.wwpdb.org

A user guide is available at

<https://www.wwpdb.org/validation/2017/XrayValidationReportHelp>

with specific help available everywhere you see the ⓘ symbol.

The following versions of software and data (see [references ⓘ](#)) were used in the production of this report:

MolProbity : 4.02b-467
Mogul : 1.8.5 (274361), CSD as541be (2020)
Xtriage (Phenix) : 1.13
EDS : 2.13.1
Percentile statistics : 20191225.v01 (using entries in the PDB archive December 25th 2019)
Refmac : 5.8.0158
CCP4 : 7.0.044 (Gargrove)
Ideal geometry (proteins) : Engh & Huber (2001)
Ideal geometry (DNA, RNA) : Parkinson et al. (1996)
Validation Pipeline (wwPDB-VP) : 2.13.1

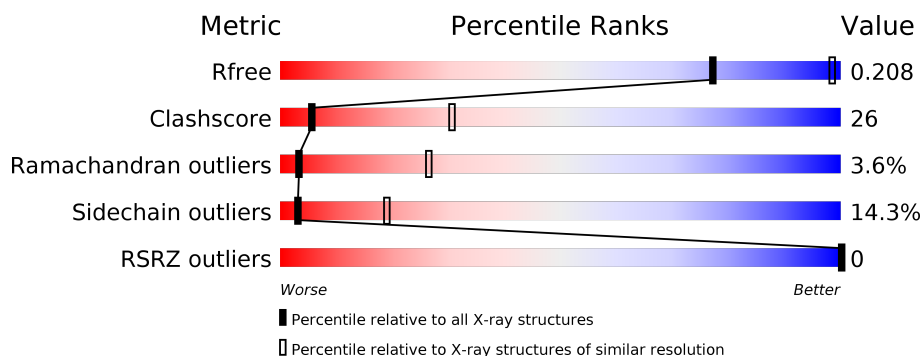
1 Overall quality at a glance

The following experimental techniques were used to determine the structure:

X-RAY DIFFRACTION

The reported resolution of this entry is 3.50 Å.

Percentile scores (ranging between 0-100) for global validation metrics of the entry are shown in the following graphic. The table shows the number of entries on which the scores are based.



Metric	Whole archive (#Entries)	Similar resolution (#Entries, resolution range(Å))
R_{free}	130704	1659 (3.60-3.40)
Clashscore	141614	1036 (3.58-3.42)
Ramachandran outliers	138981	1005 (3.58-3.42)
Sidechain outliers	138945	1006 (3.58-3.42)
RSRZ outliers	127900	1559 (3.60-3.40)

The table below summarises the geometric issues observed across the polymeric chains and their fit to the electron density. The red, orange, yellow and green segments on the lower bar indicate the fraction of residues that contain outliers for ≥ 3 , 2, 1 and 0 types of geometric quality criteria respectively. A grey segment represents the fraction of residues that are not modelled. The numeric value for each fraction is indicated below the corresponding segment, with a dot representing fractions $\leq 5\%$. The upper red bar (where present) indicates the fraction of residues that have poor fit to the electron density. The numeric value is given above the bar.

Mol	Chain	Length	Quality of chain
1	A	260	
2	B	267	

2 Entry composition [i](#)

There are 3 unique types of molecules in this entry. The entry contains 4028 atoms, of which 0 are hydrogens and 0 are deuteriums.

In the tables below, the ZeroOcc column contains the number of atoms modelled with zero occupancy, the AltConf column contains the number of residues with at least one atom in alternate conformation and the Trace column contains the number of residues modelled with at most 2 atoms.

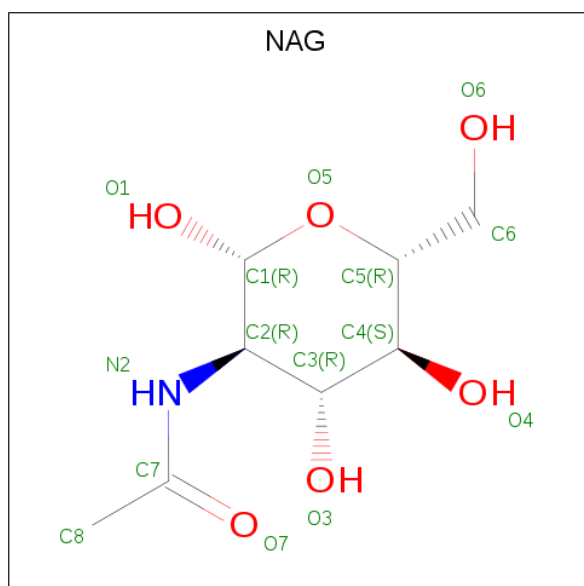
- Molecule 1 is a protein called Agglutinin-1 A chain.

Mol	Chain	Residues	Atoms					ZeroOcc	AltConf	Trace
1	A	247	Total	C	N	O	S	0	0	0
			1935	1228	332	371	4			

- Molecule 2 is a protein called Agglutinin-1 B chain.

Mol	Chain	Residues	Atoms					ZeroOcc	AltConf	Trace
2	B	261	Total	C	N	O	S	0	0	0
			2048	1287	345	396	20			

- Molecule 3 is 2-acetamido-2-deoxy-beta-D-glucopyranose (three-letter code: NAG) (formula: $C_8H_{15}NO_6$).



Mol	Chain	Residues	Atoms				ZeroOcc	AltConf
3	A	1	Total	C	N	O	0	0
			15	8	1	6		
3	B	1	Total	C	N	O	0	0
			15	8	1	6		

Continued on next page...

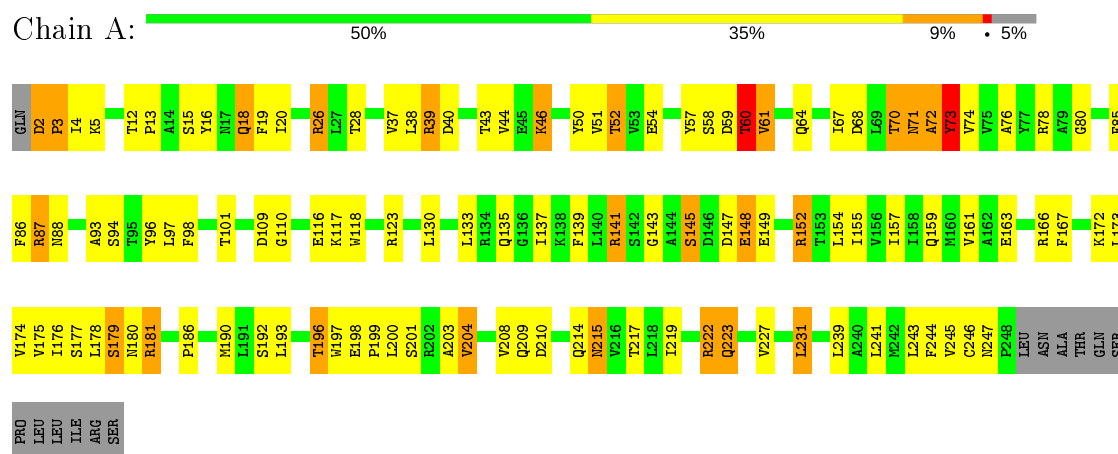
Continued from previous page...

Mol	Chain	Residues	Atoms				ZeroOcc	AltConf
3	B	1	Total	C	N	O	0	0
			15	8	1	6		

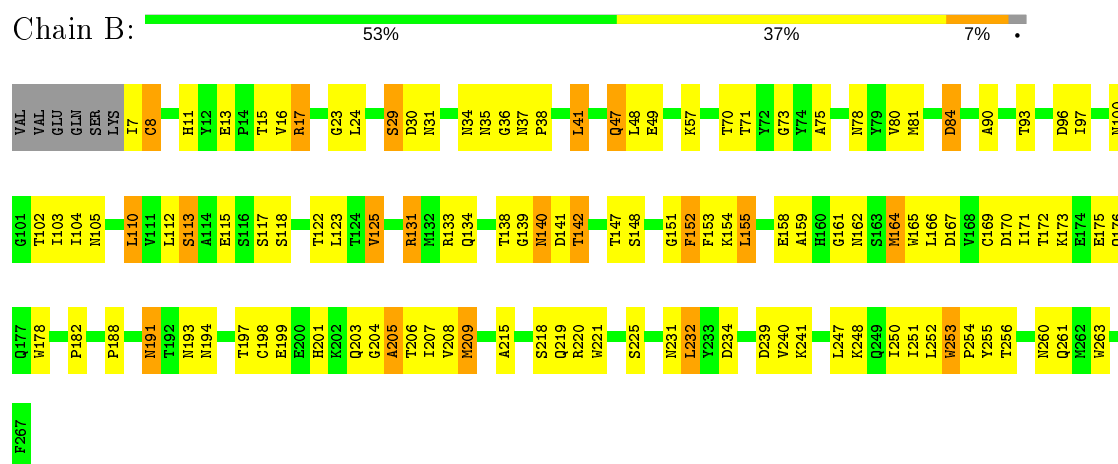
3 Residue-property plots

These plots are drawn for all protein, RNA, DNA and oligosaccharide chains in the entry. The first graphic for a chain summarises the proportions of the various outlier classes displayed in the second graphic. The second graphic shows the sequence view annotated by issues in geometry and electron density. Residues are color-coded according to the number of geometric quality criteria for which they contain at least one outlier: green = 0, yellow = 1, orange = 2 and red = 3 or more. A red dot above a residue indicates a poor fit to the electron density ($RSRZ > 2$). Stretches of 2 or more consecutive residues without any outlier are shown as a green connector. Residues present in the sample, but not in the model, are shown in grey.

• Molecule 1: Agglutinin-1 A chain



• Molecule 2: Agglutinin-1 B chain



4 Data and refinement statistics

Property	Value	Source
Space group	P 42 21 2	Depositor
Cell constants a, b, c, α , β , γ	141.12Å 141.12Å 105.25Å 90.00° 90.00° 90.00°	Depositor
Resolution (Å)	29.31 – 3.50 29.30 – 3.50	Depositor EDS
% Data completeness (in resolution range)	100.0 (29.31-3.50) 81.9 (29.30-3.50)	Depositor EDS
R_{merge}	0.10	Depositor
R_{sym}	(Not available)	Depositor
$\langle I/\sigma(I) \rangle$ ¹	2.84 (at 3.47Å)	Xtriage
Refinement program	REFMAC 5.2.0005	Depositor
R, R_{free}	0.195 , 0.255 0.155 , 0.208	Depositor DCC
R_{free} test set	1115 reflections (9.81%)	wwPDB-VP
Wilson B-factor (Å ²)	95.6	Xtriage
Anisotropy	0.126	Xtriage
Bulk solvent k_{sol} (e/Å ³), B_{sol} (Å ²)	0.23 , 50.4	EDS
L-test for twinning ²	$\langle L \rangle = 0.44$, $\langle L^2 \rangle = 0.27$	Xtriage
Estimated twinning fraction	No twinning to report.	Xtriage
F_o, F_c correlation	0.94	EDS
Total number of atoms	4028	wwPDB-VP
Average B, all atoms (Å ²)	51.0	wwPDB-VP

Xtriage's analysis on translational NCS is as follows: *The largest off-origin peak in the Patterson function is 4.55% of the height of the origin peak. No significant pseudotranslation is detected.*

¹Intensities estimated from amplitudes.

²Theoretical values of $\langle |L| \rangle$, $\langle L^2 \rangle$ for acentric reflections are 0.5, 0.333 respectively for untwinned datasets, and 0.375, 0.2 for perfectly twinned datasets.

5 Model quality [i](#)

5.1 Standard geometry [i](#)

Bond lengths and bond angles in the following residue types are not validated in this section: NAG

The Z score for a bond length (or angle) is the number of standard deviations the observed value is removed from the expected value. A bond length (or angle) with $|Z| > 5$ is considered an outlier worth inspection. RMSZ is the root-mean-square of all Z scores of the bond lengths (or angles).

Mol	Chain	Bond lengths		Bond angles	
		RMSZ	$\# Z > 5$	RMSZ	$\# Z > 5$
1	A	0.65	0/1976	0.84	4/2692 (0.1%)
2	B	0.60	0/2098	0.75	0/2852
All	All	0.62	0/4074	0.80	4/5544 (0.1%)

Chiral center outliers are detected by calculating the chiral volume of a chiral center and verifying if the center is modelled as a planar moiety or with the opposite hand. A planarity outlier is detected by checking planarity of atoms in a peptide group, atoms in a mainchain group or atoms of a sidechain that are expected to be planar.

Mol	Chain	#Chirality outliers	#Planarity outliers
1	A	0	3
2	B	0	1
All	All	0	4

There are no bond length outliers.

All (4) bond angle outliers are listed below:

Mol	Chain	Res	Type	Atoms	Z	Observed(°)	Ideal(°)
1	A	73	TYR	N-CA-C	9.07	135.49	111.00
1	A	61	VAL	N-CA-C	-6.44	93.61	111.00
1	A	70	THR	C-N-CA	5.64	135.80	121.70
1	A	70	THR	N-CA-C	5.51	125.88	111.00

There are no chirality outliers.

All (4) planarity outliers are listed below:

Mol	Chain	Res	Type	Group
1	A	59	ASP	Peptide
1	A	60	THR	Peptide

Continued on next page...

Continued from previous page...

Mol	Chain	Res	Type	Group
1	A	72	ALA	Peptide
2	B	205	ALA	Peptide

5.2 Too-close contacts

In the following table, the Non-H and H(model) columns list the number of non-hydrogen atoms and hydrogen atoms in the chain respectively. The H(added) column lists the number of hydrogen atoms added and optimized by MolProbity. The Clashes column lists the number of clashes within the asymmetric unit, whereas Symm-Clashes lists symmetry related clashes.

Mol	Chain	Non-H	H(model)	H(added)	Clashes	Symm-Clashes
1	A	1935	0	1914	85	0
2	B	2048	0	1950	120	0
3	A	15	0	15	4	0
3	B	30	0	30	4	0
All	All	4028	0	3909	203	0

The all-atom clashscore is defined as the number of clashes found per 1000 atoms (including hydrogen atoms). The all-atom clashscore for this structure is 26.

All (203) close contacts within the same asymmetric unit are listed below, sorted by their clash magnitude.

Atom-1	Atom-2	Interatomic distance (Å)	Clash overlap (Å)
1:A:60:THR:HB	1:A:61:VAL:HG23	1.23	1.11
2:B:205:ALA:HA	2:B:206:THR:CG2	1.84	1.07
1:A:152:ARG:HH11	1:A:152:ARG:HG2	1.15	1.04
1:A:71:ASN:HA	1:A:72:ALA:HB3	1.35	1.04
2:B:205:ALA:HA	2:B:206:THR:HG22	1.41	1.02
1:A:98:PHE:O	1:A:101:THR:HG22	1.61	1.00
2:B:47:GLN:H	2:B:47:GLN:HE21	1.09	1.00
2:B:113:SER:HB3	2:B:134:GLN:HG3	1.49	0.95
1:A:73:TYR:N	1:A:73:TYR:CD1	2.32	0.94
2:B:16:VAL:HB	2:B:139:GLY:HA3	1.52	0.91
1:A:60:THR:CB	1:A:61:VAL:HG23	2.00	0.90
1:A:60:THR:HB	1:A:61:VAL:CG2	2.03	0.89
2:B:17:ARG:HD3	2:B:140:ASN:O	1.73	0.89
2:B:131:ARG:HG3	2:B:131:ARG:HH11	1.37	0.89
2:B:207:ILE:HD11	2:B:250:ILE:HB	1.55	0.88
1:A:73:TYR:N	1:A:73:TYR:HD1	1.65	0.87
1:A:152:ARG:HG2	1:A:152:ARG:NH1	1.90	0.85

Continued on next page...

Continued from previous page...

Atom-1	Atom-2	Interatomic distance (Å)	Clash overlap (Å)
2:B:102:THR:HG23	2:B:220:ARG:HH22	1.44	0.83
2:B:205:ALA:HA	2:B:206:THR:HG23	1.64	0.80
1:A:68:ASP:HB3	1:A:71:ASN:O	1.81	0.79
2:B:131:ARG:CG	2:B:131:ARG:HH11	1.96	0.78
2:B:232:LEU:H	2:B:232:LEU:CD2	1.98	0.77
1:A:139:PHE:CE2	1:A:149:GLU:HB3	2.21	0.75
2:B:162:ASN:O	2:B:209:MET:HB2	1.88	0.73
1:A:152:ARG:HH11	1:A:152:ARG:CG	1.99	0.73
1:A:12:THR:H	1:A:15:SER:HB3	1.55	0.72
2:B:24:LEU:HB2	2:B:41:LEU:CD1	2.20	0.71
1:A:98:PHE:O	1:A:101:THR:CG2	2.36	0.71
2:B:194:ASN:HB3	2:B:209:MET:HG2	1.72	0.70
1:A:88:ASN:OD1	1:A:109:ASP:HA	1.91	0.70
2:B:71:THR:CG2	2:B:73:GLY:O	2.40	0.70
2:B:206:THR:H	2:B:251:ILE:HA	1.58	0.68
1:A:172:LYS:N	1:A:172:LYS:HD2	2.09	0.68
2:B:207:ILE:HD12	2:B:207:ILE:O	1.94	0.68
1:A:200:LEU:HD23	1:A:239:LEU:HD22	1.76	0.67
2:B:166:LEU:HD11	2:B:240:VAL:HG11	1.76	0.67
1:A:155:ILE:O	1:A:159:GLN:HG3	1.94	0.67
1:A:215:ASN:ND2	1:A:215:ASN:H	1.93	0.66
2:B:256:THR:H	2:B:261:GLN:HE22	1.44	0.66
1:A:139:PHE:HE2	1:A:149:GLU:HB3	1.61	0.65
2:B:170:ASP:OD1	2:B:172:THR:HB	1.96	0.65
2:B:240:VAL:HG23	2:B:260:ASN:HB2	1.77	0.65
2:B:35:ASN:OD1	2:B:84:ASP:HB3	1.97	0.65
2:B:97:ILE:HG12	2:B:103:ILE:HG12	1.80	0.64
2:B:102:THR:CG2	2:B:220:ARG:HH22	2.10	0.64
1:A:217:THR:HG23	1:A:227:VAL:HG22	1.80	0.64
2:B:240:VAL:HG22	2:B:260:ASN:O	1.98	0.63
2:B:110:LEU:HB3	2:B:125:VAL:HB	1.79	0.63
2:B:191:ASN:HD21	2:B:193:ASN:HB2	1.63	0.63
2:B:16:VAL:CB	2:B:139:GLY:HA3	2.28	0.62
2:B:113:SER:HB3	2:B:134:GLN:CG	2.28	0.62
1:A:3:PRO:HD2	1:A:4:ILE:HD12	1.81	0.62
2:B:256:THR:H	2:B:261:GLN:NE2	1.97	0.62
2:B:169:CYS:HA	2:B:176:GLN:HE22	1.65	0.62
1:A:70:THR:HG22	1:A:71:ASN:OD1	2.01	0.61
1:A:87:ARG:HB2	1:A:87:ARG:HH11	1.65	0.61
2:B:170:ASP:HB3	2:B:173:LYS:HD2	1.83	0.61
2:B:16:VAL:HB	2:B:139:GLY:CA	2.28	0.60

Continued on next page...

Continued from previous page...

Atom-1	Atom-2	Interatomic distance (Å)	Clash overlap (Å)
2:B:205:ALA:CA	2:B:206:THR:HG22	2.23	0.60
2:B:13:GLU:OE2	2:B:57:LYS:HD2	2.01	0.60
3:A:701:NAG:H61	2:B:140:ASN:HD22	1.66	0.59
2:B:164:MET:SD	2:B:250:ILE:HD12	2.42	0.59
1:A:192:SER:O	1:A:196:THR:OG1	2.18	0.59
2:B:17:ARG:HH11	2:B:140:ASN:C	2.06	0.59
1:A:87:ARG:HD2	1:A:109:ASP:OD1	2.03	0.58
2:B:162:ASN:O	2:B:209:MET:CB	2.51	0.58
2:B:231:ASN:HD22	2:B:234:ASP:HB2	1.68	0.58
1:A:87:ARG:HB2	1:A:87:ARG:NH1	2.19	0.58
1:A:215:ASN:CG	3:A:701:NAG:H62	2.24	0.58
2:B:71:THR:HG21	2:B:73:GLY:O	2.04	0.57
2:B:131:ARG:HG3	2:B:131:ARG:NH1	2.09	0.57
2:B:175:GLU:H	2:B:175:GLU:CD	2.06	0.57
2:B:232:LEU:H	2:B:232:LEU:HD22	1.67	0.57
1:A:172:LYS:HD2	1:A:172:LYS:H	1.69	0.57
2:B:158:GLU:HG3	2:B:176:GLN:HG2	1.87	0.57
2:B:24:LEU:HB2	2:B:41:LEU:HD13	1.85	0.56
1:A:71:ASN:HA	1:A:72:ALA:CB	2.12	0.56
2:B:17:ARG:CZ	2:B:142:THR:HG23	2.36	0.56
2:B:29:SER:HB3	2:B:37:ASN:HD21	1.69	0.56
2:B:17:ARG:NH1	2:B:141:ASP:C	2.59	0.56
1:A:40:ASP:O	1:A:43:THR:HG22	2.06	0.56
1:A:116:GLU:OE2	1:A:123:ARG:HB2	2.06	0.56
1:A:163:GLU:HA	1:A:163:GLU:OE2	2.06	0.56
2:B:47:GLN:H	2:B:47:GLN:NE2	1.92	0.55
2:B:100:ASN:ND2	3:B:501:NAG:O6	2.39	0.55
2:B:240:VAL:HG12	2:B:250:ILE:HG12	1.88	0.55
1:A:141:ARG:HD3	1:A:141:ARG:O	2.07	0.55
2:B:201:HIS:CE1	2:B:218:SER:HB3	2.42	0.55
2:B:47:GLN:N	2:B:47:GLN:HE21	1.91	0.54
1:A:166:ARG:NH2	1:A:197:TRP:CZ3	2.75	0.54
1:A:5:LYS:HB3	1:A:54:GLU:HB3	1.88	0.54
1:A:157:ILE:O	1:A:161:VAL:HG23	2.07	0.54
1:A:208:VAL:HG23	1:A:209:GLN:H	1.73	0.54
1:A:72:ALA:O	1:A:166:ARG:NH2	2.41	0.54
1:A:13:PRO:HB3	1:A:175:VAL:HG13	1.89	0.53
1:A:2:ASP:OD2	1:A:3:PRO:HD3	2.09	0.53
1:A:246:CYS:HB2	2:B:8:CYS:H	1.74	0.53
2:B:23:GLY:HA2	2:B:182:PRO:HG2	1.90	0.52
1:A:38:LEU:HD12	1:A:243:LEU:HA	1.90	0.52

Continued on next page...

Continued from previous page...

Atom-1	Atom-2	Interatomic distance (Å)	Clash overlap (Å)
1:A:4:ILE:N	1:A:4:ILE:HD12	2.24	0.52
2:B:16:VAL:HG21	2:B:138:THR:HB	1.92	0.52
2:B:232:LEU:H	2:B:232:LEU:HD23	1.73	0.52
1:A:50:TYR:CD1	1:A:68:ASP:HA	2.45	0.52
2:B:17:ARG:C	2:B:17:ARG:HE	2.13	0.52
1:A:200:LEU:CD2	1:A:239:LEU:HD22	2.40	0.52
2:B:17:ARG:HH12	2:B:141:ASP:C	2.13	0.52
2:B:197:THR:HG23	2:B:219:GLN:HG2	1.93	0.51
2:B:17:ARG:NH2	2:B:139:GLY:HA2	2.25	0.51
2:B:17:ARG:NH1	2:B:142:THR:N	2.58	0.51
2:B:17:ARG:NH2	2:B:139:GLY:CA	2.74	0.51
2:B:140:ASN:ND2	3:B:601:NAG:H61	2.26	0.51
2:B:170:ASP:H	2:B:176:GLN:NE2	2.08	0.51
2:B:71:THR:HG22	2:B:73:GLY:N	2.25	0.51
2:B:151:GLY:HA2	2:B:263:TRP:CE3	2.46	0.50
1:A:244:PHE:HE1	1:A:247:ASN:ND2	2.08	0.50
1:A:67:ILE:HG22	1:A:68:ASP:O	2.10	0.50
2:B:17:ARG:NH1	2:B:140:ASN:C	2.64	0.50
2:B:191:ASN:ND2	2:B:193:ASN:HB2	2.26	0.50
2:B:24:LEU:CB	2:B:41:LEU:HD13	2.40	0.50
2:B:17:ARG:O	2:B:139:GLY:HA2	2.13	0.49
2:B:207:ILE:HG13	2:B:250:ILE:O	2.13	0.49
2:B:255:TYR:HA	2:B:261:GLN:HE22	1.78	0.49
1:A:93:ALA:O	1:A:97:LEU:HB3	2.13	0.49
1:A:179:SER:HB2	2:B:154:LYS:HB2	1.94	0.48
2:B:204:GLY:O	2:B:205:ALA:C	2.52	0.48
2:B:188:PRO:HG3	2:B:209:MET:HE3	1.94	0.48
2:B:153:PHE:O	2:B:153:PHE:CD2	2.67	0.48
2:B:253:TRP:CD2	2:B:254:PRO:HD2	2.50	0.47
2:B:48:LEU:HD22	3:B:601:NAG:O1	2.15	0.47
2:B:102:THR:HG23	2:B:220:ARG:NH2	2.21	0.47
2:B:97:ILE:CG1	2:B:103:ILE:HG12	2.44	0.47
1:A:5:LYS:CB	1:A:54:GLU:HB3	2.44	0.47
2:B:17:ARG:HD3	2:B:140:ASN:C	2.32	0.46
1:A:133:LEU:O	1:A:137:ILE:HG13	2.15	0.46
1:A:71:ASN:HB2	1:A:73:TYR:H	1.79	0.46
2:B:75:ALA:H	2:B:78:ASN:HD22	1.62	0.46
2:B:165:TRP:CE2	2:B:248:LYS:HD3	2.50	0.46
2:B:115:GLU:OE2	2:B:133:ARG:HD2	2.16	0.46
2:B:232:LEU:CD2	2:B:232:LEU:N	2.73	0.46
2:B:198:CYS:O	2:B:199:GLU:C	2.54	0.46

Continued on next page...

Continued from previous page...

Atom-1	Atom-2	Interatomic distance (Å)	Clash overlap (Å)
1:A:209:GLN:O	1:A:210:ASP:HB3	2.14	0.46
1:A:186:PRO:HB3	1:A:190:MET:SD	2.56	0.46
1:A:2:ASP:HA	1:A:52:THR:OG1	2.15	0.46
2:B:201:HIS:HD1	2:B:234:ASP:CG	2.18	0.45
2:B:41:LEU:HD23	2:B:123:LEU:HD21	1.97	0.45
2:B:29:SER:HB3	2:B:37:ASN:ND2	2.30	0.45
1:A:141:ARG:HD3	1:A:141:ARG:C	2.36	0.45
3:A:701:NAG:H61	2:B:140:ASN:ND2	2.30	0.45
1:A:80:GLY:CA	1:A:141:ARG:NH2	2.79	0.45
2:B:140:ASN:CG	3:B:601:NAG:H61	2.37	0.45
2:B:165:TRP:CD2	2:B:248:LYS:HD3	2.52	0.45
2:B:152:PHE:CE2	2:B:260:ASN:HA	2.52	0.45
2:B:36:GLY:HA2	2:B:81:MET:SD	2.57	0.44
2:B:30:ASP:O	2:B:31:ASN:CB	2.64	0.44
2:B:104:ILE:HG12	2:B:105:ASN:N	2.32	0.44
1:A:16:TYR:CZ	1:A:174:VAL:HG11	2.52	0.44
1:A:80:GLY:HA3	1:A:141:ARG:NH2	2.33	0.44
2:B:17:ARG:HG3	2:B:17:ARG:H	1.57	0.44
1:A:176:ILE:HG22	1:A:180:ASN:ND2	2.33	0.44
1:A:167:PHE:CD1	1:A:193:LEU:HB3	2.53	0.44
1:A:219:ILE:HG22	1:A:223:GLN:HA	1.99	0.44
2:B:80:VAL:CG1	2:B:123:LEU:HB2	2.48	0.44
1:A:44:VAL:HG23	1:A:44:VAL:O	2.17	0.44
1:A:76:ALA:HB2	1:A:85:PHE:CD2	2.53	0.44
2:B:221:TRP:CZ3	2:B:231:ASN:HB2	2.53	0.43
1:A:26:ARG:O	1:A:39:ARG:NH2	2.49	0.43
2:B:17:ARG:CZ	2:B:139:GLY:HA2	2.49	0.43
1:A:73:TYR:HE1	1:A:166:ARG:HH22	1.59	0.43
1:A:37:VAL:HG13	1:A:38:LEU:O	2.18	0.43
2:B:133:ARG:HG2	2:B:215:ALA:O	2.19	0.43
2:B:17:ARG:NH2	2:B:139:GLY:N	2.67	0.43
2:B:256:THR:N	2:B:261:GLN:HE22	2.12	0.42
1:A:19:PHE:O	1:A:20:ILE:C	2.57	0.42
1:A:130:LEU:O	1:A:133:LEU:N	2.45	0.42
1:A:177:SER:O	1:A:181:ARG:N	2.52	0.42
2:B:102:THR:HG22	2:B:220:ARG:HH12	1.85	0.42
2:B:37:ASN:HA	2:B:38:PRO:HD2	1.76	0.42
2:B:70:THR:O	2:B:80:VAL:HA	2.20	0.42
2:B:147:THR:OG1	2:B:148:SER:N	2.52	0.42
1:A:204:VAL:HG13	1:A:231:LEU:HD21	2.01	0.42
1:A:215:ASN:OD1	3:A:701:NAG:H62	2.19	0.42

Continued on next page...

Continued from previous page...

Atom-1	Atom-2	Interatomic distance (Å)	Clash overlap (Å)
1:A:71:ASN:CG	1:A:71:ASN:O	2.58	0.42
2:B:159:ALA:HB2	2:B:178:TRP:CH2	2.55	0.42
2:B:253:TRP:CG	2:B:254:PRO:HD2	2.55	0.42
1:A:154:LEU:HD23	1:A:154:LEU:HA	1.93	0.41
2:B:205:ALA:O	2:B:252:LEU:N	2.48	0.41
1:A:46:LYS:HB2	1:A:96:TYR:HE1	1.85	0.41
2:B:154:LYS:O	2:B:154:LYS:HG2	2.20	0.41
2:B:112:LEU:HD11	2:B:123:LEU:HD13	2.03	0.41
1:A:198:GLU:N	1:A:199:PRO:HD2	2.36	0.41
1:A:241:LEU:HD23	1:A:241:LEU:HA	1.81	0.41
2:B:155:LEU:C	2:B:169:CYS:SG	2.99	0.41
1:A:71:ASN:CA	1:A:72:ALA:HB3	2.26	0.41
2:B:131:ARG:NH1	2:B:131:ARG:CG	2.66	0.41
1:A:222:ARG:HG2	1:A:222:ARG:H	1.57	0.41
2:B:240:VAL:CG2	2:B:260:ASN:HB2	2.47	0.41
1:A:86:PHE:CE2	1:A:110:GLY:HA2	2.56	0.40
1:A:57:TYR:CD2	1:A:58:SER:N	2.90	0.40
1:A:71:ASN:HB2	1:A:73:TYR:CD1	2.56	0.40
2:B:71:THR:HG22	2:B:73:GLY:O	2.18	0.40
1:A:167:PHE:CZ	1:A:193:LEU:O	2.74	0.40
2:B:17:ARG:CZ	2:B:139:GLY:CA	2.99	0.40
1:A:147:ASP:O	1:A:148:GLU:C	2.59	0.40

There are no symmetry-related clashes.

5.3 Torsion angles [i](#)

5.3.1 Protein backbone [i](#)

In the following table, the Percentiles column shows the percent Ramachandran outliers of the chain as a percentile score with respect to all X-ray entries followed by that with respect to entries of similar resolution.

The Analysed column shows the number of residues for which the backbone conformation was analysed, and the total number of residues.

Mol	Chain	Analysed	Favoured	Allowed	Outliers	Percentiles	
1	A	245/260 (94%)	200 (82%)	34 (14%)	11 (4%)	2	21
2	B	259/267 (97%)	225 (87%)	27 (10%)	7 (3%)	5	33
All	All	504/527 (96%)	425 (84%)	61 (12%)	18 (4%)	3	26

All (18) Ramachandran outliers are listed below:

Mol	Chain	Res	Type
1	A	60	THR
1	A	71	ASN
2	B	90	ALA
1	A	73	TYR
2	B	118	SER
2	B	152	PHE
2	B	241	LYS
1	A	18	GLN
1	A	204	VAL
1	A	223	GLN
2	B	8	CYS
2	B	140	ASN
1	A	28	THR
1	A	145	SER
2	B	161	GLY
1	A	3	PRO
1	A	203	ALA
1	A	143	GLY

5.3.2 Protein sidechains ⓘ

In the following table, the Percentiles column shows the percent sidechain outliers of the chain as a percentile score with respect to all X-ray entries followed by that with respect to entries of similar resolution.

The Analysed column shows the number of residues for which the sidechain conformation was analysed, and the total number of residues.

Mol	Chain	Analysed	Rotameric	Outliers	Percentiles	
1	A	214/227 (94%)	183 (86%)	31 (14%)	3	18
2	B	226/233 (97%)	194 (86%)	32 (14%)	3	19
All	All	440/460 (96%)	377 (86%)	63 (14%)	3	19

All (63) residues with a non-rotameric sidechain are listed below:

Mol	Chain	Res	Type
1	A	2	ASP
1	A	18	GLN
1	A	26	ARG
1	A	39	ARG
1	A	46	LYS

Continued on next page...

Continued from previous page...

Mol	Chain	Res	Type
1	A	51	VAL
1	A	52	THR
1	A	64	GLN
1	A	73	TYR
1	A	74	VAL
1	A	78	ARG
1	A	87	ARG
1	A	94	SER
1	A	117	LYS
1	A	118	TRP
1	A	135	GLN
1	A	141	ARG
1	A	145	SER
1	A	148	GLU
1	A	152	ARG
1	A	173	LEU
1	A	178	LEU
1	A	179	SER
1	A	181	ARG
1	A	196	THR
1	A	201	SER
1	A	214	GLN
1	A	215	ASN
1	A	222	ARG
1	A	231	LEU
1	A	245	VAL
2	B	7	ILE
2	B	11	HIS
2	B	15	THR
2	B	17	ARG
2	B	29	SER
2	B	34	ASN
2	B	41	LEU
2	B	47	GLN
2	B	49	GLU
2	B	84	ASP
2	B	93	THR
2	B	96	ASP
2	B	110	LEU
2	B	113	SER
2	B	117	SER
2	B	122	THR

Continued on next page...

Continued from previous page...

Mol	Chain	Res	Type
2	B	125	VAL
2	B	131	ARG
2	B	142	THR
2	B	155	LEU
2	B	164	MET
2	B	167	ASP
2	B	171	ILE
2	B	191	ASN
2	B	203	GLN
2	B	208	VAL
2	B	209	MET
2	B	225	SER
2	B	232	LEU
2	B	239	ASP
2	B	247	LEU
2	B	253	TRP

Some sidechains can be flipped to improve hydrogen bonding and reduce clashes. All (15) such sidechains are listed below:

Mol	Chain	Res	Type
1	A	49	GLN
1	A	159	GLN
1	A	247	ASN
2	B	31	ASN
2	B	34	ASN
2	B	37	ASN
2	B	47	GLN
2	B	78	ASN
2	B	100	ASN
2	B	140	ASN
2	B	176	GLN
2	B	191	ASN
2	B	231	ASN
2	B	258	ASN
2	B	261	GLN

5.3.3 RNA ⓘ

There are no RNA molecules in this entry.

5.4 Non-standard residues in protein, DNA, RNA chains ⓘ

There are no non-standard protein/DNA/RNA residues in this entry.

5.5 Carbohydrates ⓘ

There are no monosaccharides in this entry.

5.6 Ligand geometry ⓘ

3 ligands are modelled in this entry.

In the following table, the Counts columns list the number of bonds (or angles) for which Mogul statistics could be retrieved, the number of bonds (or angles) that are observed in the model and the number of bonds (or angles) that are defined in the Chemical Component Dictionary. The Link column lists molecule types, if any, to which the group is linked. The Z score for a bond length (or angle) is the number of standard deviations the observed value is removed from the expected value. A bond length (or angle) with $|Z| > 2$ is considered an outlier worth inspection. RMSZ is the root-mean-square of all Z scores of the bond lengths (or angles).

Mol	Type	Chain	Res	Link	Bond lengths			Bond angles		
					Counts	RMSZ	# $ Z > 2$	Counts	RMSZ	# $ Z > 2$
3	NAG	B	601	-	15,15,15	1.07	1 (6%)	21,21,21	1.97	7 (33%)
3	NAG	B	501	-	15,15,15	1.18	2 (13%)	21,21,21	3.35	12 (57%)
3	NAG	A	701	-	15,15,15	1.02	1 (6%)	21,21,21	1.47	4 (19%)

In the following table, the Chirals column lists the number of chiral outliers, the number of chiral centers analysed, the number of these observed in the model and the number defined in the Chemical Component Dictionary. Similar counts are reported in the Torsion and Rings columns. '-' means no outliers of that kind were identified.

Mol	Type	Chain	Res	Link	Chirals	Torsions	Rings
3	NAG	B	601	-	-	5/6/26/26	0/1/1/1
3	NAG	B	501	-	-	4/6/26/26	0/1/1/1
3	NAG	A	701	-	-	4/6/26/26	0/1/1/1

All (4) bond length outliers are listed below:

Mol	Chain	Res	Type	Atoms	Z	Observed(Å)	Ideal(Å)
3	B	501	NAG	C1-C2	2.51	1.55	1.52
3	B	601	NAG	C1-C2	2.20	1.55	1.52
3	B	501	NAG	C6-C5	2.02	1.58	1.51

Continued on next page...

Continued from previous page...

Mol	Chain	Res	Type	Atoms	Z	Observed(Å)	Ideal(Å)
3	A	701	NAG	C8-C7	2.02	1.54	1.50

All (23) bond angle outliers are listed below:

Mol	Chain	Res	Type	Atoms	Z	Observed(°)	Ideal(°)
3	B	501	NAG	O5-C1-C2	8.35	117.91	109.52
3	B	501	NAG	C3-C4-C5	-5.38	100.64	110.24
3	B	501	NAG	C4-C3-C2	-4.62	103.58	110.34
3	B	601	NAG	C1-C2-C3	-4.34	104.63	110.54
3	B	501	NAG	C1-O5-C5	4.33	121.83	113.66
3	B	501	NAG	O5-C5-C6	4.21	116.91	106.44
3	B	501	NAG	O4-C4-C3	4.03	119.67	110.35
3	B	501	NAG	O3-C3-C4	3.91	119.38	110.35
3	B	501	NAG	C6-C5-C4	3.63	121.52	113.00
3	B	601	NAG	C1-C2-N2	3.53	114.82	110.73
3	A	701	NAG	O4-C4-C3	3.52	118.49	110.35
3	B	601	NAG	O5-C1-C2	3.27	112.80	109.52
3	B	601	NAG	O5-C5-C6	3.20	114.39	106.44
3	A	701	NAG	C2-N2-C7	2.68	129.71	123.18
3	B	501	NAG	O6-C6-C5	2.66	120.40	111.29
3	B	501	NAG	O4-C4-C5	2.57	115.67	109.30
3	B	501	NAG	O5-C5-C4	-2.46	105.22	109.69
3	A	701	NAG	O5-C5-C6	2.20	111.90	106.44
3	B	601	NAG	O3-C3-C2	2.15	113.99	109.66
3	B	601	NAG	O3-C3-C4	2.14	115.30	110.35
3	B	601	NAG	O4-C4-C3	2.08	115.16	110.35
3	B	501	NAG	O7-C7-C8	-2.03	118.28	122.06
3	A	701	NAG	C6-C5-C4	-2.01	108.30	113.00

There are no chirality outliers.

All (13) torsion outliers are listed below:

Mol	Chain	Res	Type	Atoms
3	B	601	NAG	C1-C2-N2-C7
3	B	601	NAG	C8-C7-N2-C2
3	B	601	NAG	O7-C7-N2-C2
3	A	701	NAG	O7-C7-N2-C2
3	B	501	NAG	C4-C5-C6-O6
3	A	701	NAG	C8-C7-N2-C2
3	B	501	NAG	C8-C7-N2-C2
3	B	501	NAG	O7-C7-N2-C2
3	B	501	NAG	O5-C5-C6-O6

Continued on next page...

Continued from previous page...

Mol	Chain	Res	Type	Atoms
3	A	701	NAG	C4-C5-C6-O6
3	A	701	NAG	O5-C5-C6-O6
3	B	601	NAG	O5-C5-C6-O6
3	B	601	NAG	C3-C2-N2-C7

There are no ring outliers.

3 monomers are involved in 8 short contacts:

Mol	Chain	Res	Type	Clashes	Symm-Clashes
3	B	601	NAG	3	0
3	B	501	NAG	1	0
3	A	701	NAG	4	0

5.7 Other polymers [i](#)

There are no such residues in this entry.

5.8 Polymer linkage issues [i](#)

There are no chain breaks in this entry.

6 Fit of model and data [i](#)

6.1 Protein, DNA and RNA chains [i](#)

In the following table, the column labelled ‘#RSRZ> 2’ contains the number (and percentage) of RSRZ outliers, followed by percent RSRZ outliers for the chain as percentile scores relative to all X-ray entries and entries of similar resolution. The OWAB column contains the minimum, median, 95th percentile and maximum values of the occupancy-weighted average B-factor per residue. The column labelled ‘Q< 0.9’ lists the number of (and percentage) of residues with an average occupancy less than 0.9.

Mol	Chain	Analysed	<RSRZ>	#RSRZ>2	OWAB(Å ²)	Q<0.9
1	A	247/260 (95%)	-0.91	0 100 100	46, 51, 55, 64	0
2	B	261/267 (97%)	-0.81	0 100 100	46, 52, 55, 59	0
All	All	508/527 (96%)	-0.86	0 100 100	46, 51, 55, 64	0

There are no RSRZ outliers to report.

6.2 Non-standard residues in protein, DNA, RNA chains [i](#)

There are no non-standard protein/DNA/RNA residues in this entry.

6.3 Carbohydrates [i](#)

There are no monosaccharides in this entry.

6.4 Ligands [i](#)

In the following table, the Atoms column lists the number of modelled atoms in the group and the number defined in the chemical component dictionary. The B-factors column lists the minimum, median, 95th percentile and maximum values of B factors of atoms in the group. The column labelled ‘Q< 0.9’ lists the number of atoms with occupancy less than 0.9.

Mol	Type	Chain	Res	Atoms	RSCC	RSR	B-factors(Å ²)	Q<0.9
3	NAG	B	501	15/15	0.82	0.23	51,61,65,65	0
3	NAG	A	701	15/15	0.88	0.19	55,60,68,68	0
3	NAG	B	601	15/15	0.94	0.13	49,55,59,59	0

6.5 Other polymers [i](#)

There are no such residues in this entry.