



# Full wwPDB X-ray Structure Validation Report ⓘ

Oct 11, 2021 – 03:06 AM EDT

PDB ID : 2Q5I  
Title : Crystal structure of apo S581L Glycyl-tRNA synthetase mutant  
Authors : Cader, M.Z.; Ren, J.; James, P.A.; Bird, L.E.; Talbot, K.; Stammers, D.K.;  
Oxford Protein Production Facility (OPPF)  
Deposited on : 2007-06-01  
Resolution : 2.80 Å(reported)

This is a Full wwPDB X-ray Structure Validation Report for a publicly released PDB entry.

We welcome your comments at [validation@mail.wwpdb.org](mailto:validation@mail.wwpdb.org)

A user guide is available at

<https://www.wwpdb.org/validation/2017/XrayValidationReportHelp>

with specific help available everywhere you see the ⓘ symbol.

---

The following versions of software and data (see [references ⓘ](#)) were used in the production of this report:

MolProbity : 4.02b-467  
Mogul : 1.8.5 (274361), CSD as541be (2020)  
Xtriage (Phenix) : 1.13  
EDS : 2.23.2  
Percentile statistics : 20191225.v01 (using entries in the PDB archive December 25th 2019)  
Refmac : 5.8.0158  
CCP4 : 7.0.044 (Gargrove)  
Ideal geometry (proteins) : Engh & Huber (2001)  
Ideal geometry (DNA, RNA) : Parkinson et al. (1996)  
Validation Pipeline (wwPDB-VP) : 2.23.2

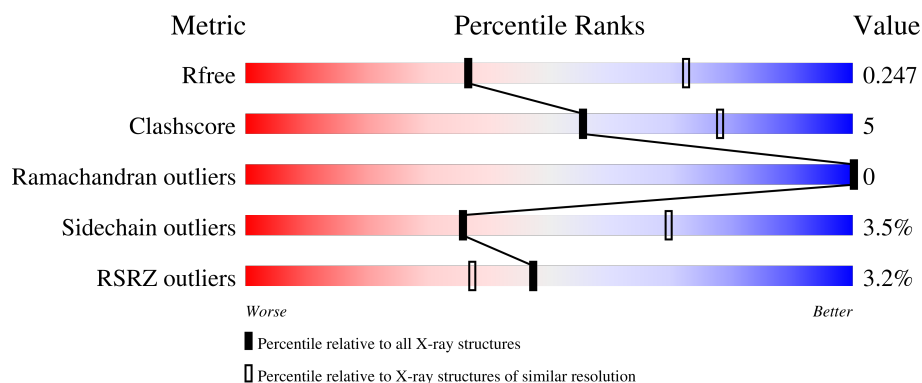
# 1 Overall quality at a glance

The following experimental techniques were used to determine the structure:

## *X-RAY DIFFRACTION*


The reported resolution of this entry is 2.80 Å.

Percentile scores (ranging between 0-100) for global validation metrics of the entry are shown in the following graphic. The table shows the number of entries on which the scores are based.



Metric	Whole archive (#Entries)	Similar resolution (#Entries, resolution range(Å))
$R_{free}$	130704	3140 (2.80-2.80)
Clashscore	141614	3569 (2.80-2.80)
Ramachandran outliers	138981	3498 (2.80-2.80)
Sidechain outliers	138945	3500 (2.80-2.80)
RSRZ outliers	127900	3078 (2.80-2.80)

The table below summarises the geometric issues observed across the polymeric chains and their fit to the electron density. The red, orange, yellow and green segments of the lower bar indicate the fraction of residues that contain outliers for  $\geq 3$ , 2, 1 and 0 types of geometric quality criteria respectively. A grey segment represents the fraction of residues that are not modelled. The numeric value for each fraction is indicated below the corresponding segment, with a dot representing fractions  $\leq 5\%$ . The upper red bar (where present) indicates the fraction of residues that have poor fit to the electron density. The numeric value is given above the bar.

Mol	Chain	Length	Quality of chain
1	A	691	

The following table lists non-polymeric compounds, carbohydrate monomers and non-standard residues in protein, DNA, RNA chains that are outliers for geometric or electron-density-fit criteria:

Mol	Type	Chain	Res	Chirality	Geometry	Clashes	Electron density
2	SO4	A	693	-	-	-	X

## 2 Entry composition

There are 3 unique types of molecules in this entry. The entry contains 4267 atoms, of which 0 are hydrogens and 0 are deuteriums.

In the tables below, the ZeroOcc column contains the number of atoms modelled with zero occupancy, the AltConf column contains the number of residues with at least one atom in alternate conformation and the Trace column contains the number of residues modelled with at most 2 atoms.

- Molecule 1 is a protein called Glycyl-tRNA synthetase.

Mol	Chain	Residues	Atoms					ZeroOcc	AltConf	Trace
			Total	C	N	O	S			
1	A	528	4215	2683	724	784	24	0	0	0

There are 7 discrepancies between the modelled and reference sequences:

Chain	Residue	Modelled	Actual	Comment	Reference
A	581	LEU	SER	engineered mutation	UNP P41250
A	686	HIS	-	expression tag	UNP P41250
A	687	HIS	-	expression tag	UNP P41250
A	688	HIS	-	expression tag	UNP P41250
A	689	HIS	-	expression tag	UNP P41250
A	690	HIS	-	expression tag	UNP P41250
A	691	HIS	-	expression tag	UNP P41250

- Molecule 2 is SULFATE ION (three-letter code: SO4) (formula: O<sub>4</sub>S).



Mol	Chain	Residues	Atoms			ZeroOcc	AltConf
2	A	1	Total	O	S	0	0
			5	4	1		
2	A	1	Total	O	S	0	0
			5	4	1		
2	A	1	Total	O	S	0	0
			5	4	1		

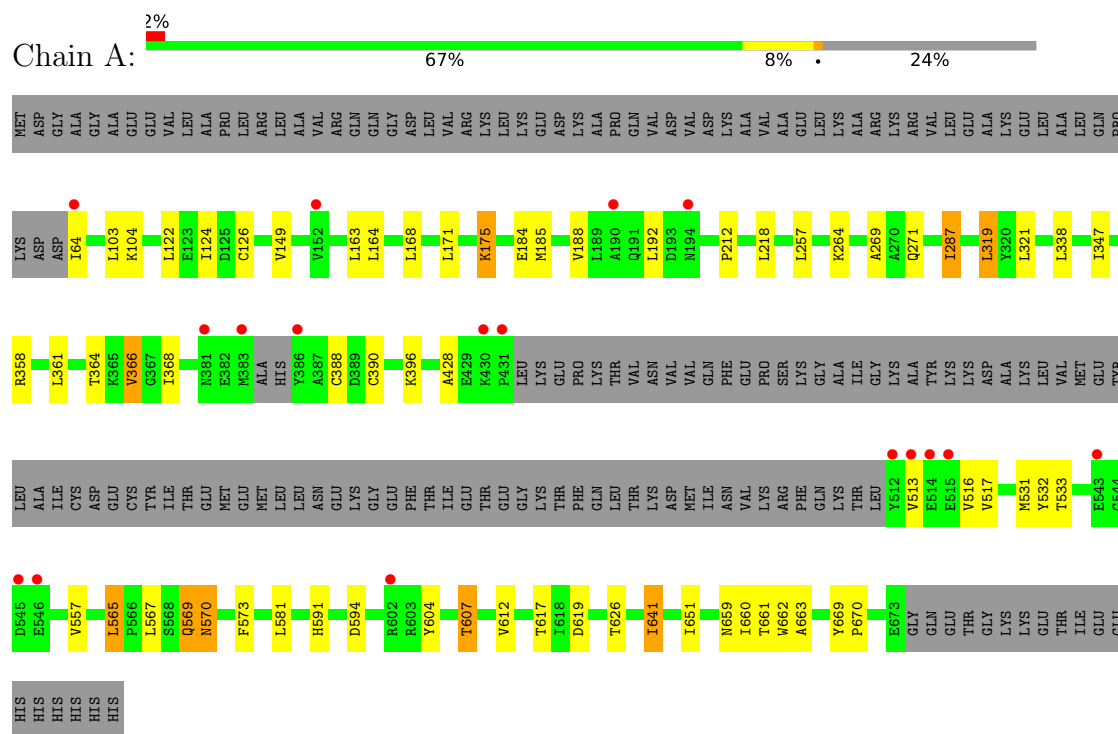
- Molecule 3 is water.

Mol	Chain	Residues	Atoms		ZeroOcc	AltConf
3	A	37	Total	O	0	0
			37	37		

### 3 Residue-property plots [i](#)

These plots are drawn for all protein, RNA, DNA and oligosaccharide chains in the entry. The first graphic for a chain summarises the proportions of the various outlier classes displayed in the second graphic. The second graphic shows the sequence view annotated by issues in geometry and electron density. Residues are color-coded according to the number of geometric quality criteria for which they contain at least one outlier: green = 0, yellow = 1, orange = 2 and red = 3 or more. A red dot above a residue indicates a poor fit to the electron density ( $RSRZ > 2$ ). Stretches of 2 or more consecutive residues without any outlier are shown as a green connector. Residues present in the sample, but not in the model, are shown in grey.

#### • Molecule 1: Glycyl-tRNA synthetase



## 4 Data and refinement statistics

Property	Value	Source
Space group	P 43 21 2	Depositor
Cell constants a, b, c, $\alpha$ , $\beta$ , $\gamma$	92.53Å 92.53Å 246.86Å 90.00° 90.00° 90.00°	Depositor
Resolution (Å)	29.27 – 2.80 29.27 – 2.80	Depositor EDS
% Data completeness (in resolution range)	99.9 (29.27-2.80) 99.9 (29.27-2.80)	Depositor EDS
$R_{merge}$	0.11	Depositor
$R_{sym}$	(Not available)	Depositor
$\langle I/\sigma(I) \rangle$ <sup>1</sup>	1.57 (at 2.80Å)	Xtriage
Refinement program	REFMAC 5.2.0019	Depositor
R, $R_{free}$	0.213 , 0.249 0.216 , 0.247	Depositor DCC
$R_{free}$ test set	1330 reflections (4.88%)	wwPDB-VP
Wilson B-factor (Å <sup>2</sup> )	57.9	Xtriage
Anisotropy	0.131	Xtriage
Bulk solvent $k_{sol}$ (e/Å <sup>3</sup> ), $B_{sol}$ (Å <sup>2</sup> )	0.33 , 49.5	EDS
L-test for twinning <sup>2</sup>	$\langle  L  \rangle = 0.50$ , $\langle L^2 \rangle = 0.33$	Xtriage
Estimated twinning fraction	No twinning to report.	Xtriage
$F_o, F_c$ correlation	0.93	EDS
Total number of atoms	4267	wwPDB-VP
Average B, all atoms (Å <sup>2</sup> )	41.0	wwPDB-VP

Xtriage's analysis on translational NCS is as follows: *The largest off-origin peak in the Patterson function is 3.76% of the height of the origin peak. No significant pseudotranslation is detected.*

<sup>1</sup>Intensities estimated from amplitudes.

<sup>2</sup>Theoretical values of  $\langle |L| \rangle$ ,  $\langle L^2 \rangle$  for acentric reflections are 0.5, 0.333 respectively for untwinned datasets, and 0.375, 0.2 for perfectly twinned datasets.

## 5 Model quality [i](#)

### 5.1 Standard geometry [i](#)

Bond lengths and bond angles in the following residue types are not validated in this section: SO4

The Z score for a bond length (or angle) is the number of standard deviations the observed value is removed from the expected value. A bond length (or angle) with  $|Z| > 5$  is considered an outlier worth inspection. RMSZ is the root-mean-square of all Z scores of the bond lengths (or angles).

Mol	Chain	Bond lengths		Bond angles	
		RMSZ	$\# Z  > 5$	RMSZ	$\# Z  > 5$
1	A	0.34	0/4311	0.51	0/5825

Chiral center outliers are detected by calculating the chiral volume of a chiral center and verifying if the center is modelled as a planar moiety or with the opposite hand. A planarity outlier is detected by checking planarity of atoms in a peptide group, atoms in a mainchain group or atoms of a sidechain that are expected to be planar.

Mol	Chain	#Chirality outliers	#Planarity outliers
1	A	1	0

There are no bond length outliers.

There are no bond angle outliers.

All (1) chirality outliers are listed below:

Mol	Chain	Res	Type	Atom
1	A	626	THR	CA

There are no planarity outliers.

### 5.2 Too-close contacts [i](#)

In the following table, the Non-H and H(model) columns list the number of non-hydrogen atoms and hydrogen atoms in the chain respectively. The H(added) column lists the number of hydrogen atoms added and optimized by MolProbity. The Clashes column lists the number of clashes within the asymmetric unit, whereas Symm-Clashes lists symmetry-related clashes.

Mol	Chain	Non-H	H(model)	H(added)	Clashes	Symm-Clashes
1	A	4215	0	4138	43	0

*Continued on next page...*

*Continued from previous page...*

Mol	Chain	Non-H	H(model)	H(added)	Clashes	Symm-Clashes
2	A	15	0	0	0	0
3	A	37	0	0	0	0
All	All	4267	0	4138	43	0

The all-atom clashscore is defined as the number of clashes found per 1000 atoms (including hydrogen atoms). The all-atom clashscore for this structure is 5.

All (43) close contacts within the same asymmetric unit are listed below, sorted by their clash magnitude.

Atom-1	Atom-2	Interatomic distance (Å)	Clash overlap (Å)
1:A:168:LEU:HD22	1:A:185:MET:HE2	1.45	0.98
1:A:366:VAL:HG22	1:A:557:VAL:HG11	1.73	0.70
1:A:661:THR:HG22	1:A:663:ALA:H	1.59	0.68
1:A:581:LEU:HD22	1:A:591:HIS:CD2	2.30	0.67
1:A:565:LEU:HD11	1:A:604:TYR:OH	1.96	0.65
1:A:565:LEU:HD11	1:A:604:TYR:CZ	2.32	0.64
1:A:641:ILE:HD13	1:A:670:PRO:O	1.99	0.62
1:A:565:LEU:HD12	1:A:617:THR:HA	1.83	0.60
1:A:149:VAL:CG1	1:A:218:LEU:HB3	2.32	0.59
1:A:163:LEU:HD11	1:A:212:PRO:HD3	1.87	0.56
1:A:659:ASN:O	1:A:660:ILE:HD12	2.05	0.56
1:A:124:ILE:HG21	1:A:257:LEU:HD21	1.88	0.55
1:A:661:THR:HG22	1:A:663:ALA:N	2.23	0.54
1:A:607:THR:HG23	1:A:612:VAL:HB	1.89	0.53
1:A:569:GLN:HA	1:A:569:GLN:HE21	1.74	0.52
1:A:388:CYS:SG	1:A:390:CYS:HB2	2.50	0.52
1:A:570:ASN:HD21	1:A:573:PHE:HD1	1.59	0.51
1:A:126:CYS:H	1:A:271:GLN:NE2	2.09	0.50
1:A:567:LEU:HD22	1:A:619:ASP:CB	2.43	0.49
1:A:103:LEU:HD12	1:A:557:VAL:O	2.13	0.48
1:A:565:LEU:CD1	1:A:617:THR:HA	2.44	0.48
1:A:64:ILE:HD12	1:A:64:ILE:N	2.30	0.47
1:A:171:LEU:HB2	1:A:185:MET:HE1	1.96	0.47
1:A:175:LYS:NZ	1:A:175:LYS:HA	2.29	0.47
1:A:565:LEU:HB3	1:A:594:ASP:HB3	1.97	0.47
1:A:570:ASN:C	1:A:570:ASN:HD22	2.18	0.46
1:A:104:LYS:HG3	1:A:531:MET:HE1	1.97	0.46
1:A:171:LEU:HD12	1:A:185:MET:CE	2.46	0.46
1:A:361:LEU:O	1:A:364:THR:HG22	2.15	0.45
1:A:661:THR:HG22	1:A:662:TRP:N	2.32	0.45
1:A:149:VAL:HG11	1:A:218:LEU:HB3	1.99	0.44

*Continued on next page...*



*Continued from previous page...*

Atom-1	Atom-2	Interatomic distance (Å)	Clash overlap (Å)
1:A:570:ASN:C	1:A:570:ASN:ND2	2.71	0.44
1:A:321:LEU:HD13	1:A:347:ILE:HD11	2.01	0.43
1:A:651:ILE:HD11	1:A:669:TYR:CZ	2.54	0.43
1:A:122:LEU:O	1:A:269:ALA:HA	2.18	0.43
1:A:184:GLU:O	1:A:188:VAL:HG23	2.19	0.42
1:A:368:ILE:HD12	1:A:533:THR:HG21	2.01	0.42
1:A:319:LEU:HD13	1:A:321:LEU:HD21	2.02	0.42
1:A:428:ALA:HB3	1:A:516:VAL:HB	2.02	0.42
1:A:287:ILE:HD11	1:A:532:TYR:CD2	2.55	0.41
1:A:164:LEU:HD22	1:A:192:LEU:HD21	2.02	0.41
1:A:565:LEU:HD11	1:A:604:TYR:HH	1.86	0.40
1:A:366:VAL:CG2	1:A:557:VAL:HG11	2.48	0.40

There are no symmetry-related clashes.

## 5.3 Torsion angles [i](#)

### 5.3.1 Protein backbone [i](#)

In the following table, the Percentiles column shows the percent Ramachandran outliers of the chain as a percentile score with respect to all X-ray entries followed by that with respect to entries of similar resolution.

The Analysed column shows the number of residues for which the backbone conformation was analysed, and the total number of residues.

Mol	Chain	Analysed	Favoured	Allowed	Outliers	Percentiles	
1	A	522/691 (76%)	508 (97%)	14 (3%)	0	100	100

There are no Ramachandran outliers to report.

### 5.3.2 Protein sidechains [i](#)

In the following table, the Percentiles column shows the percent sidechain outliers of the chain as a percentile score with respect to all X-ray entries followed by that with respect to entries of similar resolution.

The Analysed column shows the number of residues for which the sidechain conformation was analysed, and the total number of residues.

Mol	Chain	Analysed	Rotameric	Outliers	Percentiles
1	A	459/598 (77%)	443 (96%)	16 (4%)	36 70

All (16) residues with a non-rotameric sidechain are listed below:

Mol	Chain	Res	Type
1	A	175	LYS
1	A	264	LYS
1	A	287	ILE
1	A	319	LEU
1	A	338	LEU
1	A	358	ARG
1	A	366	VAL
1	A	396	LYS
1	A	513	VAL
1	A	517	VAL
1	A	565	LEU
1	A	569	GLN
1	A	570	ASN
1	A	607	THR
1	A	626	THR
1	A	641	ILE

Sometimes sidechains can be flipped to improve hydrogen bonding and reduce clashes. All (12) such sidechains are listed below:

Mol	Chain	Res	Type
1	A	106	ASN
1	A	169	GLN
1	A	216	ASN
1	A	261	ASN
1	A	271	GLN
1	A	313	ASN
1	A	331	GLN
1	A	519	ASN
1	A	569	GLN
1	A	570	ASN
1	A	657	ASN
1	A	659	ASN

### 5.3.3 RNA ⓘ

There are no RNA molecules in this entry.

## 5.4 Non-standard residues in protein, DNA, RNA chains [i](#)

There are no non-standard protein/DNA/RNA residues in this entry.

## 5.5 Carbohydrates [i](#)

There are no monosaccharides in this entry.

## 5.6 Ligand geometry [i](#)

3 ligands are modelled in this entry.

In the following table, the Counts columns list the number of bonds (or angles) for which Mogul statistics could be retrieved, the number of bonds (or angles) that are observed in the model and the number of bonds (or angles) that are defined in the Chemical Component Dictionary. The Link column lists molecule types, if any, to which the group is linked. The Z score for a bond length (or angle) is the number of standard deviations the observed value is removed from the expected value. A bond length (or angle) with  $|Z| > 2$  is considered an outlier worth inspection. RMSZ is the root-mean-square of all Z scores of the bond lengths (or angles).

Mol	Type	Chain	Res	Link	Bond lengths			Bond angles		
					Counts	RMSZ	$\# Z  > 2$	Counts	RMSZ	$\# Z  > 2$
2	SO4	A	694	-	4,4,4	0.15	0	6,6,6	0.13	0
2	SO4	A	693	-	4,4,4	0.15	0	6,6,6	0.25	0
2	SO4	A	692	-	4,4,4	0.15	0	6,6,6	0.14	0

There are no bond length outliers.

There are no bond angle outliers.

There are no chirality outliers.

There are no torsion outliers.

There are no ring outliers.

No monomer is involved in short contacts.

## 5.7 Other polymers [i](#)

There are no such residues in this entry.

## 5.8 Polymer linkage issues [i](#)

There are no chain breaks in this entry.

## 6 Fit of model and data [i](#)

### 6.1 Protein, DNA and RNA chains [i](#)

In the following table, the column labelled ‘#RSRZ> 2’ contains the number (and percentage) of RSRZ outliers, followed by percent RSRZ outliers for the chain as percentile scores relative to all X-ray entries and entries of similar resolution. The OWAB column contains the minimum, median, 95<sup>th</sup> percentile and maximum values of the occupancy-weighted average B-factor per residue. The column labelled ‘Q< 0.9’ lists the number of (and percentage) of residues with an average occupancy less than 0.9.

Mol	Chain	Analysed	<RSRZ>	#RSRZ>2	OWAB(Å <sup>2</sup> )	Q<0.9
1	A	528/691 (76%)	-0.04	17 (3%) 47 37	27, 39, 53, 88	0

All (17) RSRZ outliers are listed below:

Mol	Chain	Res	Type	RSRZ
1	A	512	TYR	7.5
1	A	386	TYR	5.1
1	A	431	PRO	4.4
1	A	545	ASP	4.3
1	A	513	VAL	3.6
1	A	546	GLU	3.4
1	A	152	VAL	3.4
1	A	383	MET	3.2
1	A	381	ASN	3.0
1	A	514	GLU	2.7
1	A	64	ILE	2.7
1	A	194	ASN	2.5
1	A	543	GLU	2.2
1	A	430	LYS	2.2
1	A	515	GLU	2.1
1	A	602	ARG	2.0
1	A	190	ALA	2.0

### 6.2 Non-standard residues in protein, DNA, RNA chains [i](#)

There are no non-standard protein/DNA/RNA residues in this entry.

### 6.3 Carbohydrates [i](#)

There are no monosaccharides in this entry.

## 6.4 Ligands [i](#)

In the following table, the Atoms column lists the number of modelled atoms in the group and the number defined in the chemical component dictionary. The B-factors column lists the minimum, median, 95<sup>th</sup> percentile and maximum values of B factors of atoms in the group. The column labelled 'Q<0.9' lists the number of atoms with occupancy less than 0.9.

Mol	Type	Chain	Res	Atoms	RSCC	RSR	B-factors( $\text{\AA}^2$ )	Q<0.9
2	SO4	A	694	5/5	0.63	0.39	84,88,96,104	0
2	SO4	A	693	5/5	0.72	0.45	73,79,87,100	0
2	SO4	A	692	5/5	0.84	0.32	70,76,84,86	0

## 6.5 Other polymers [i](#)

There are no such residues in this entry.