



wwPDB X-ray Structure Validation Summary Report ⓘ

Oct 11, 2021 – 07:39 AM EDT

PDB ID : 2Q6N
Title : Structure of Cytochrome P450 2B4 with Bound 1-(4-chlorophenyl)imidazole
Authors : Zhao, Y.; Sun, L.; Muralidhara, B.K.; Kumar, S.; White, M.A.; Stout, C.D.; Halpert, J.R.
Deposited on : 2007-06-05
Resolution : 3.20 Å(reported)

This is a wwPDB X-ray Structure Validation Summary Report for a publicly released PDB entry.

We welcome your comments at validation@mail.wwpdb.org

A user guide is available at

<https://www.wwpdb.org/validation/2017/XrayValidationReportHelp>

with specific help available everywhere you see the ⓘ symbol.

The following versions of software and data (see [references ⓘ](#)) were used in the production of this report:

MolProbity	:	4.02b-467
Mogul	:	1.8.5 (274361), CSD as541be (2020)
Xtriage (Phenix)	:	1.13
EDS	:	2.23.2
buster-report	:	1.1.7 (2018)
Percentile statistics	:	20191225.v01 (using entries in the PDB archive December 25th 2019)
Refmac	:	5.8.0158
CCP4	:	7.0.044 (Gargrove)
Ideal geometry (proteins)	:	Engh & Huber (2001)
Ideal geometry (DNA, RNA)	:	Parkinson et al. (1996)
Validation Pipeline (wwPDB-VP)	:	2.23.2

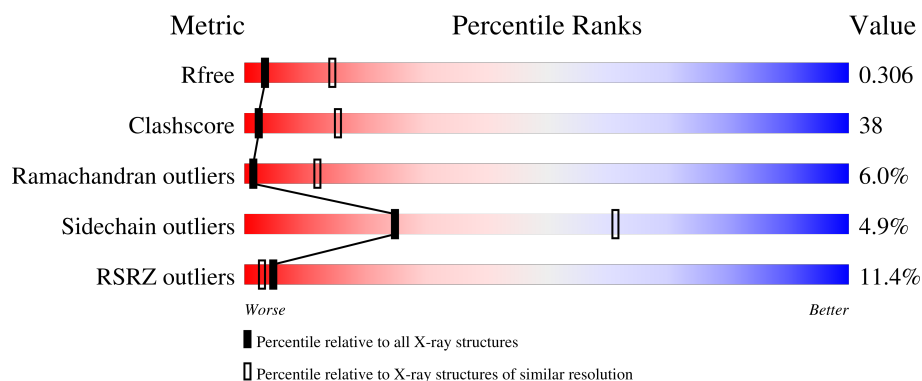
1 Overall quality at a glance

The following experimental techniques were used to determine the structure:

X-RAY DIFFRACTION

The reported resolution of this entry is 3.20 Å.

Percentile scores (ranging between 0-100) for global validation metrics of the entry are shown in the following graphic. The table shows the number of entries on which the scores are based.



Metric	Whole archive (#Entries)	Similar resolution (#Entries, resolution range(Å))
R_{free}	130704	1133 (3.20-3.20)
Clashscore	141614	1253 (3.20-3.20)
Ramachandran outliers	138981	1234 (3.20-3.20)
Sidechain outliers	138945	1233 (3.20-3.20)
RSRZ outliers	127900	1095 (3.20-3.20)

The table below summarises the geometric issues observed across the polymeric chains and their fit to the electron density. The red, orange, yellow and green segments of the lower bar indicate the fraction of residues that contain outliers for ≥ 3 , 2, 1 and 0 types of geometric quality criteria respectively. A grey segment represents the fraction of residues that are not modelled. The numeric value for each fraction is indicated below the corresponding segment, with a dot representing fractions $\leq 5\%$. The upper red bar (where present) indicates the fraction of residues that have poor fit to the electron density. The numeric value is given above the bar.

Mol	Chain	Length	Quality of chain
1	A	478	<div> <div>4%</div> <div>46%</div> <div>45%</div> <div>6%</div> <div>.</div> </div>
1	B	478	<div> <div>10%</div> <div>41%</div> <div>51%</div> <div>.</div> <div>.</div> </div>
1	C	478	<div> <div>11%</div> <div>34%</div> <div>56%</div> <div>7%</div> <div>.</div> </div>
1	D	478	<div> <div>7%</div> <div>40%</div> <div>51%</div> <div>7%</div> <div>.</div> </div>
1	E	478	<div> <div>13%</div> <div>36%</div> <div>54%</div> <div>8%</div> <div>.</div> </div>

Continued on next page...

Continued from previous page...

Mol	Chain	Length	Quality of chain
1	F	478	
1	G	478	

The following table lists non-polymeric compounds, carbohydrate monomers and non-standard residues in protein, DNA, RNA chains that are outliers for geometric or electron-density-fit criteria:

Mol	Type	Chain	Res	Chirality	Geometry	Clashes	Electron density
3	1CI	A	501	-	-	-	X
3	1CI	E	501	-	-	-	X
3	1CI	G	501	-	-	X	X

2 Entry composition

There are 3 unique types of molecules in this entry. The entry contains 26523 atoms, of which 0 are hydrogens and 0 are deuteriums.

In the tables below, the ZeroOcc column contains the number of atoms modelled with zero occupancy, the AltConf column contains the number of residues with at least one atom in alternate conformation and the Trace column contains the number of residues modelled with at most 2 atoms.

- Molecule 1 is a protein called Cytochrome P450 2B4.

Mol	Chain	Residues	Atoms					ZeroOcc	AltConf	Trace
1	A	465	Total	C	N	O	S	0	0	0
			3734	2405	649	669	11			
1	B	465	Total	C	N	O	S	0	0	0
			3734	2405	649	669	11			
1	C	465	Total	C	N	O	S	0	0	0
			3734	2405	649	669	11			
1	D	465	Total	C	N	O	S	0	0	0
			3734	2405	649	669	11			
1	E	465	Total	C	N	O	S	0	0	0
			3734	2405	649	669	11			
1	F	465	Total	C	N	O	S	0	0	0
			3734	2405	649	669	11			
1	G	465	Total	C	N	O	S	0	0	0
			3734	2405	649	669	11			

There are 245 discrepancies between the modelled and reference sequences:

Chain	Residue	Modelled	Actual	Comment	Reference
A	21	ALA	GLU	engineered mutation	UNP P00178
A	?	-	PHE	deletion	UNP P00178
A	?	-	SER	deletion	UNP P00178
A	?	-	LEU	deletion	UNP P00178
A	?	-	LEU	deletion	UNP P00178
A	?	-	LEU	deletion	UNP P00178
A	?	-	LEU	deletion	UNP P00178
A	?	-	LEU	deletion	UNP P00178
A	?	-	ALA	deletion	UNP P00178
A	?	-	PHE	deletion	UNP P00178
A	?	-	LEU	deletion	UNP P00178
A	?	-	ALA	deletion	UNP P00178
A	?	-	GLY	deletion	UNP P00178
A	?	-	LEU	deletion	UNP P00178
A	?	-	LEU	deletion	UNP P00178

Continued on next page...

Continued from previous page...

Chain	Residue	Modelled	Actual	Comment	Reference
A	?	-	LEU	deletion	UNP P00178
A	?	-	LEU	deletion	UNP P00178
A	?	-	LEU	deletion	UNP P00178
A	?	-	PHE	deletion	UNP P00178
A	?	-	ARG	deletion	UNP P00178
A	22	LYS	GLY	engineered mutation	UNP P00178
A	23	LYS	HIS	engineered mutation	UNP P00178
A	24	THR	PRO	engineered mutation	UNP P00178
A	25	SER	LYS	engineered mutation	UNP P00178
A	26	SER	ALA	engineered mutation	UNP P00178
A	27	LYS	HIS	engineered mutation	UNP P00178
A	29	LYS	ARG	engineered mutation	UNP P00178
A	221	SER	PRO	engineered mutation	UNP P00178
A	226	TYR	HIS	engineered mutation	UNP P00178
A	492	HIS	-	expression tag	UNP P00178
A	493	HIS	-	expression tag	UNP P00178
A	494	HIS	-	expression tag	UNP P00178
A	495	HIS	-	expression tag	UNP P00178
A	496	HIS	-	expression tag	UNP P00178
A	497	HIS	-	expression tag	UNP P00178
B	21	ALA	GLU	engineered mutation	UNP P00178
B	?	-	PHE	deletion	UNP P00178
B	?	-	SER	deletion	UNP P00178
B	?	-	LEU	deletion	UNP P00178
B	?	-	LEU	deletion	UNP P00178
B	?	-	LEU	deletion	UNP P00178
B	?	-	LEU	deletion	UNP P00178
B	?	-	LEU	deletion	UNP P00178
B	?	-	ALA	deletion	UNP P00178
B	?	-	PHE	deletion	UNP P00178
B	?	-	LEU	deletion	UNP P00178
B	?	-	ALA	deletion	UNP P00178
B	?	-	GLY	deletion	UNP P00178
B	?	-	LEU	deletion	UNP P00178
B	?	-	LEU	deletion	UNP P00178
B	?	-	LEU	deletion	UNP P00178
B	?	-	LEU	deletion	UNP P00178
B	?	-	LEU	deletion	UNP P00178
B	?	-	LEU	deletion	UNP P00178
B	?	-	PHE	deletion	UNP P00178
B	?	-	ARG	deletion	UNP P00178
B	22	LYS	GLY	engineered mutation	UNP P00178
B	23	LYS	HIS	engineered mutation	UNP P00178

Continued on next page...

Continued from previous page...

Chain	Residue	Modelled	Actual	Comment	Reference
B	24	THR	PRO	engineered mutation	UNP P00178
B	25	SER	LYS	engineered mutation	UNP P00178
B	26	SER	ALA	engineered mutation	UNP P00178
B	27	LYS	HIS	engineered mutation	UNP P00178
B	29	LYS	ARG	engineered mutation	UNP P00178
B	221	SER	PRO	engineered mutation	UNP P00178
B	226	TYR	HIS	engineered mutation	UNP P00178
B	492	HIS	-	expression tag	UNP P00178
B	493	HIS	-	expression tag	UNP P00178
B	494	HIS	-	expression tag	UNP P00178
B	495	HIS	-	expression tag	UNP P00178
B	496	HIS	-	expression tag	UNP P00178
B	497	HIS	-	expression tag	UNP P00178
C	21	ALA	GLU	engineered mutation	UNP P00178
C	?	-	PHE	deletion	UNP P00178
C	?	-	SER	deletion	UNP P00178
C	?	-	LEU	deletion	UNP P00178
C	?	-	LEU	deletion	UNP P00178
C	?	-	LEU	deletion	UNP P00178
C	?	-	LEU	deletion	UNP P00178
C	?	-	LEU	deletion	UNP P00178
C	?	-	ALA	deletion	UNP P00178
C	?	-	PHE	deletion	UNP P00178
C	?	-	LEU	deletion	UNP P00178
C	?	-	ALA	deletion	UNP P00178
C	?	-	GLY	deletion	UNP P00178
C	?	-	LEU	deletion	UNP P00178
C	?	-	LEU	deletion	UNP P00178
C	?	-	LEU	deletion	UNP P00178
C	?	-	LEU	deletion	UNP P00178
C	?	-	LEU	deletion	UNP P00178
C	?	-	PHE	deletion	UNP P00178
C	?	-	ARG	deletion	UNP P00178
C	22	LYS	GLY	engineered mutation	UNP P00178
C	23	LYS	HIS	engineered mutation	UNP P00178
C	24	THR	PRO	engineered mutation	UNP P00178
C	25	SER	LYS	engineered mutation	UNP P00178
C	26	SER	ALA	engineered mutation	UNP P00178
C	27	LYS	HIS	engineered mutation	UNP P00178
C	29	LYS	ARG	engineered mutation	UNP P00178
C	221	SER	PRO	engineered mutation	UNP P00178
C	226	TYR	HIS	engineered mutation	UNP P00178

Continued on next page...

Continued from previous page...

Chain	Residue	Modelled	Actual	Comment	Reference
C	492	HIS	-	expression tag	UNP P00178
C	493	HIS	-	expression tag	UNP P00178
C	494	HIS	-	expression tag	UNP P00178
C	495	HIS	-	expression tag	UNP P00178
C	496	HIS	-	expression tag	UNP P00178
C	497	HIS	-	expression tag	UNP P00178
D	21	ALA	GLU	engineered mutation	UNP P00178
D	?	-	PHE	deletion	UNP P00178
D	?	-	SER	deletion	UNP P00178
D	?	-	LEU	deletion	UNP P00178
D	?	-	LEU	deletion	UNP P00178
D	?	-	LEU	deletion	UNP P00178
D	?	-	LEU	deletion	UNP P00178
D	?	-	LEU	deletion	UNP P00178
D	?	-	ALA	deletion	UNP P00178
D	?	-	PHE	deletion	UNP P00178
D	?	-	LEU	deletion	UNP P00178
D	?	-	ALA	deletion	UNP P00178
D	?	-	GLY	deletion	UNP P00178
D	?	-	LEU	deletion	UNP P00178
D	?	-	LEU	deletion	UNP P00178
D	?	-	LEU	deletion	UNP P00178
D	?	-	LEU	deletion	UNP P00178
D	?	-	LEU	deletion	UNP P00178
D	?	-	LEU	deletion	UNP P00178
D	?	-	PHE	deletion	UNP P00178
D	?	-	ARG	deletion	UNP P00178
D	22	LYS	GLY	engineered mutation	UNP P00178
D	23	LYS	HIS	engineered mutation	UNP P00178
D	24	THR	PRO	engineered mutation	UNP P00178
D	25	SER	LYS	engineered mutation	UNP P00178
D	26	SER	ALA	engineered mutation	UNP P00178
D	27	LYS	HIS	engineered mutation	UNP P00178
D	29	LYS	ARG	engineered mutation	UNP P00178
D	221	SER	PRO	engineered mutation	UNP P00178
D	226	TYR	HIS	engineered mutation	UNP P00178
D	492	HIS	-	expression tag	UNP P00178
D	493	HIS	-	expression tag	UNP P00178
D	494	HIS	-	expression tag	UNP P00178
D	495	HIS	-	expression tag	UNP P00178
D	496	HIS	-	expression tag	UNP P00178
D	497	HIS	-	expression tag	UNP P00178
E	21	ALA	GLU	engineered mutation	UNP P00178

Continued on next page...

Continued from previous page...

Chain	Residue	Modelled	Actual	Comment	Reference
E	?	-	PHE	deletion	UNP P00178
E	?	-	SER	deletion	UNP P00178
E	?	-	LEU	deletion	UNP P00178
E	?	-	LEU	deletion	UNP P00178
E	?	-	LEU	deletion	UNP P00178
E	?	-	LEU	deletion	UNP P00178
E	?	-	LEU	deletion	UNP P00178
E	?	-	ALA	deletion	UNP P00178
E	?	-	PHE	deletion	UNP P00178
E	?	-	LEU	deletion	UNP P00178
E	?	-	ALA	deletion	UNP P00178
E	?	-	GLY	deletion	UNP P00178
E	?	-	LEU	deletion	UNP P00178
E	?	-	LEU	deletion	UNP P00178
E	?	-	LEU	deletion	UNP P00178
E	?	-	LEU	deletion	UNP P00178
E	?	-	LEU	deletion	UNP P00178
E	?	-	PHE	deletion	UNP P00178
E	?	-	ARG	deletion	UNP P00178
E	22	LYS	GLY	engineered mutation	UNP P00178
E	23	LYS	HIS	engineered mutation	UNP P00178
E	24	THR	PRO	engineered mutation	UNP P00178
E	25	SER	LYS	engineered mutation	UNP P00178
E	26	SER	ALA	engineered mutation	UNP P00178
E	27	LYS	HIS	engineered mutation	UNP P00178
E	29	LYS	ARG	engineered mutation	UNP P00178
E	221	SER	PRO	engineered mutation	UNP P00178
E	226	TYR	HIS	engineered mutation	UNP P00178
E	492	HIS	-	expression tag	UNP P00178
E	493	HIS	-	expression tag	UNP P00178
E	494	HIS	-	expression tag	UNP P00178
E	495	HIS	-	expression tag	UNP P00178
E	496	HIS	-	expression tag	UNP P00178
E	497	HIS	-	expression tag	UNP P00178
F	21	ALA	GLU	engineered mutation	UNP P00178
F	?	-	PHE	deletion	UNP P00178
F	?	-	SER	deletion	UNP P00178
F	?	-	LEU	deletion	UNP P00178
F	?	-	LEU	deletion	UNP P00178
F	?	-	LEU	deletion	UNP P00178
F	?	-	LEU	deletion	UNP P00178
F	?	-	LEU	deletion	UNP P00178

Continued on next page...

Continued from previous page...

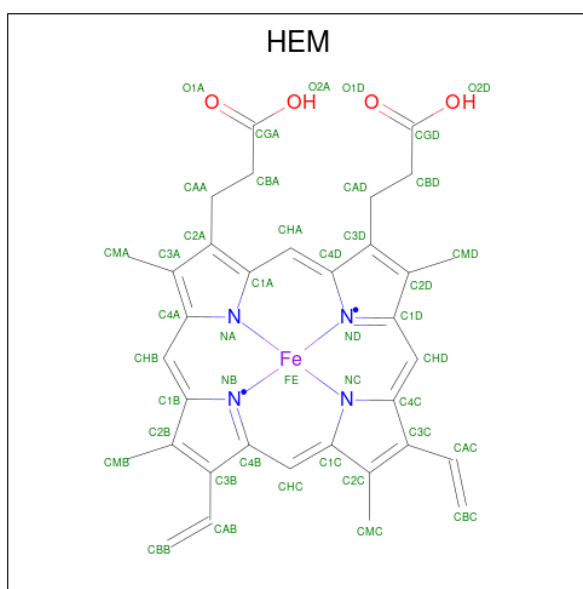
Chain	Residue	Modelled	Actual	Comment	Reference
F	?	-	ALA	deletion	UNP P00178
F	?	-	PHE	deletion	UNP P00178
F	?	-	LEU	deletion	UNP P00178
F	?	-	ALA	deletion	UNP P00178
F	?	-	GLY	deletion	UNP P00178
F	?	-	LEU	deletion	UNP P00178
F	?	-	LEU	deletion	UNP P00178
F	?	-	LEU	deletion	UNP P00178
F	?	-	LEU	deletion	UNP P00178
F	?	-	LEU	deletion	UNP P00178
F	?	-	PHE	deletion	UNP P00178
F	?	-	ARG	deletion	UNP P00178
F	22	LYS	GLY	engineered mutation	UNP P00178
F	23	LYS	HIS	engineered mutation	UNP P00178
F	24	THR	PRO	engineered mutation	UNP P00178
F	25	SER	LYS	engineered mutation	UNP P00178
F	26	SER	ALA	engineered mutation	UNP P00178
F	27	LYS	HIS	engineered mutation	UNP P00178
F	29	LYS	ARG	engineered mutation	UNP P00178
F	221	SER	PRO	engineered mutation	UNP P00178
F	226	TYR	HIS	engineered mutation	UNP P00178
F	492	HIS	-	expression tag	UNP P00178
F	493	HIS	-	expression tag	UNP P00178
F	494	HIS	-	expression tag	UNP P00178
F	495	HIS	-	expression tag	UNP P00178
F	496	HIS	-	expression tag	UNP P00178
F	497	HIS	-	expression tag	UNP P00178
G	21	ALA	GLU	engineered mutation	UNP P00178
G	?	-	PHE	deletion	UNP P00178
G	?	-	SER	deletion	UNP P00178
G	?	-	LEU	deletion	UNP P00178
G	?	-	LEU	deletion	UNP P00178
G	?	-	LEU	deletion	UNP P00178
G	?	-	LEU	deletion	UNP P00178
G	?	-	LEU	deletion	UNP P00178
G	?	-	ALA	deletion	UNP P00178
G	?	-	PHE	deletion	UNP P00178
G	?	-	LEU	deletion	UNP P00178
G	?	-	ALA	deletion	UNP P00178
G	?	-	GLY	deletion	UNP P00178
G	?	-	LEU	deletion	UNP P00178
G	?	-	LEU	deletion	UNP P00178

Continued on next page...

Continued from previous page...

Chain	Residue	Modelled	Actual	Comment	Reference
G	?	-	LEU	deletion	UNP P00178
G	?	-	LEU	deletion	UNP P00178
G	?	-	LEU	deletion	UNP P00178
G	?	-	PHE	deletion	UNP P00178
G	?	-	ARG	deletion	UNP P00178
G	22	LYS	GLY	engineered mutation	UNP P00178
G	23	LYS	HIS	engineered mutation	UNP P00178
G	24	THR	PRO	engineered mutation	UNP P00178
G	25	SER	LYS	engineered mutation	UNP P00178
G	26	SER	ALA	engineered mutation	UNP P00178
G	27	LYS	HIS	engineered mutation	UNP P00178
G	29	LYS	ARG	engineered mutation	UNP P00178
G	221	SER	PRO	engineered mutation	UNP P00178
G	226	TYR	HIS	engineered mutation	UNP P00178
G	492	HIS	-	expression tag	UNP P00178
G	493	HIS	-	expression tag	UNP P00178
G	494	HIS	-	expression tag	UNP P00178
G	495	HIS	-	expression tag	UNP P00178
G	496	HIS	-	expression tag	UNP P00178
G	497	HIS	-	expression tag	UNP P00178

- Molecule 2 is PROTOPORPHYRIN IX CONTAINING FE (three-letter code: HEM) (formula: $C_{34}H_{32}FeN_4O_4$).



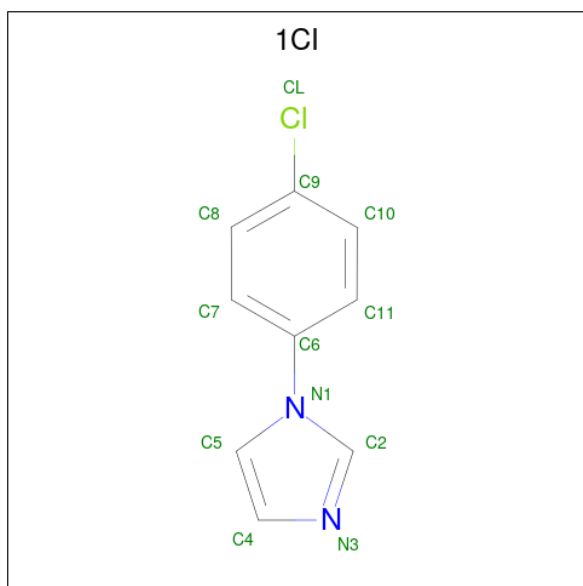
Mol	Chain	Residues	Atoms				ZeroOcc	AltConf
2	A	1	Total	C	Fe	N	O	
			43	34	1	4	4	0

Continued on next page...

Continued from previous page...

Mol	Chain	Residues	Atoms				ZeroOcc	AltConf	
2	B	1	Total 43	C 34	Fe 1	N 4	O 4	0	0
2	C	1	Total 43	C 34	Fe 1	N 4	O 4	0	0
2	D	1	Total 43	C 34	Fe 1	N 4	O 4	0	0
2	E	1	Total 43	C 34	Fe 1	N 4	O 4	0	0
2	F	1	Total 43	C 34	Fe 1	N 4	O 4	0	0
2	G	1	Total 43	C 34	Fe 1	N 4	O 4	0	0

- Molecule 3 is 1-(4-CHLOROPHENYL)-1H-IMIDAZOLE (three-letter code: 1CI) (formula: $C_9H_7ClN_2$).



Mol	Chain	Residues	Atoms				ZeroOcc	AltConf
3	A	1	Total	C	Cl	N	0	0
			12	9	1	2		
3	B	1	Total	C	Cl	N	0	0
			12	9	1	2		
3	C	1	Total	C	Cl	N	0	0
			12	9	1	2		
3	D	1	Total	C	Cl	N	0	0
			12	9	1	2		
3	E	1	Total	C	Cl	N	0	0
			12	9	1	2		

Continued on next page...

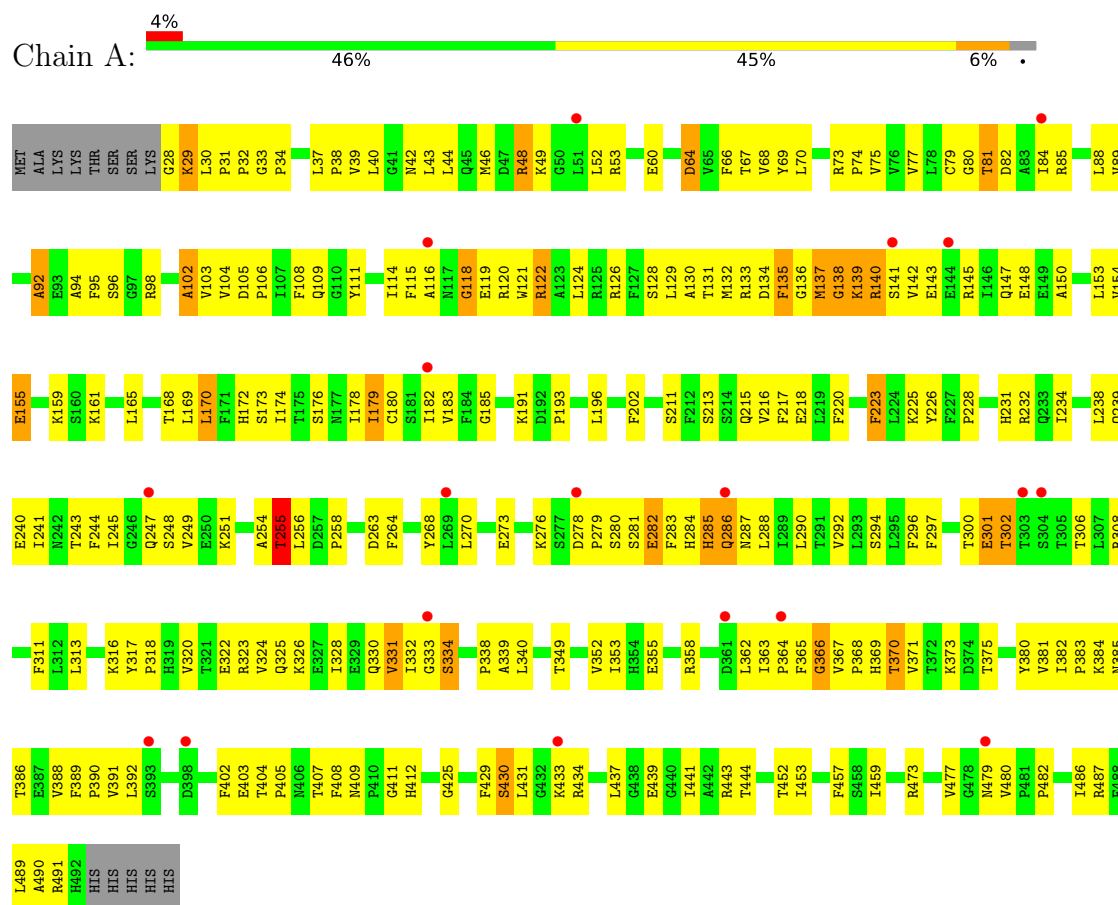
Continued from previous page...

Mol	Chain	Residues	Atoms				ZeroOcc	AltConf
3	F	1	Total	C	Cl	N	0	0
			12	9	1	2		
3	G	1	Total	C	Cl	N	0	0
			12	9	1	2		

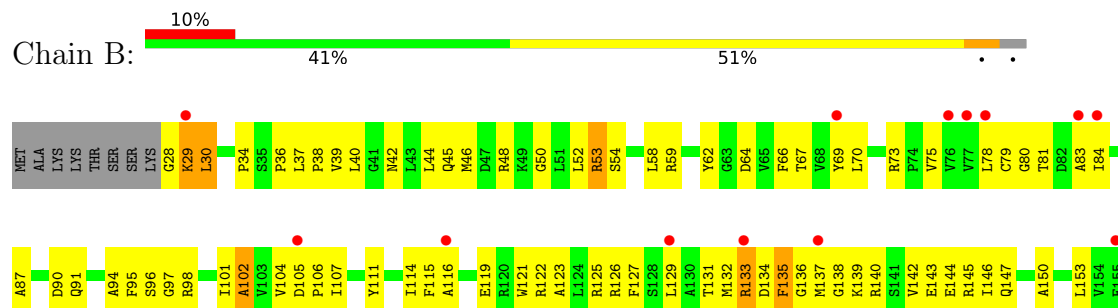
3 Residue-property plots

These plots are drawn for all protein, RNA, DNA and oligosaccharide chains in the entry. The first graphic for a chain summarises the proportions of the various outlier classes displayed in the second graphic. The second graphic shows the sequence view annotated by issues in geometry and electron density. Residues are color-coded according to the number of geometric quality criteria for which they contain at least one outlier: green = 0, yellow = 1, orange = 2 and red = 3 or more. A red dot above a residue indicates a poor fit to the electron density ($RSRZ > 2$). Stretches of 2 or more consecutive residues without any outlier are shown as a green connector. Residues present in the sample, but not in the model, are shown in grey.

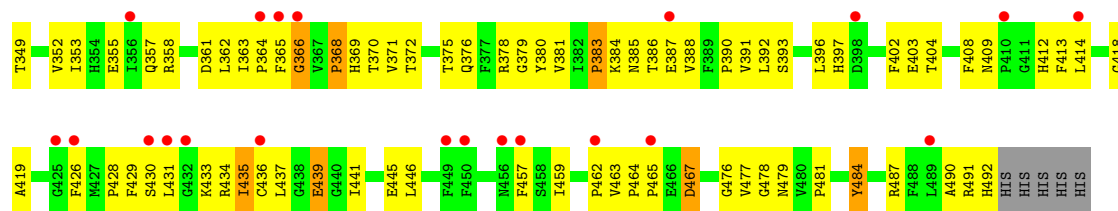
• Molecule 1: Cytochrome P450 2B4



• Molecule 1: Cytochrome P450 2B4



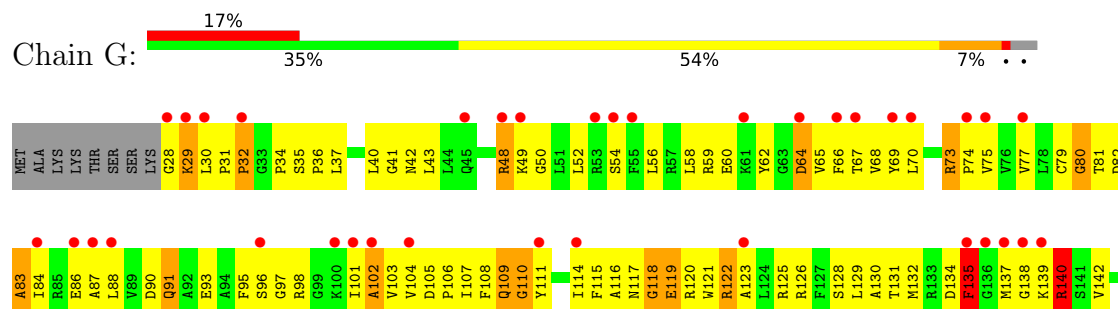


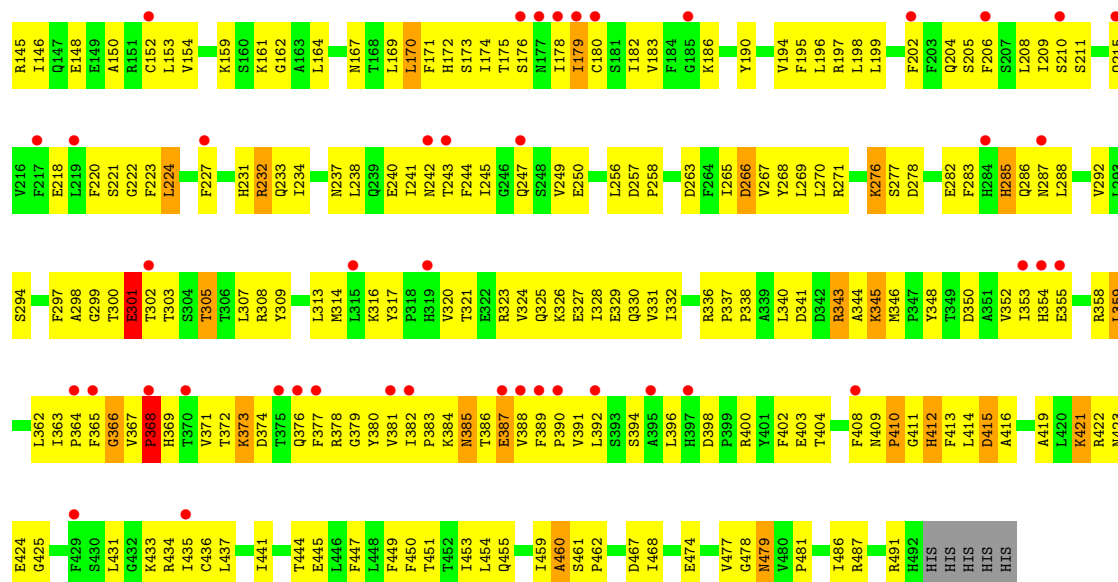


● Molecule 1: Cytochrome P450 2B4



● Molecule 1: Cytochrome P450 2B4





4 Data and refinement statistics

Property	Value	Source
Space group	P 21 21 21	Depositor
Cell constants a, b, c, α , β , γ	140.00Å 147.31Å 238.49Å 90.00° 90.00° 90.00°	Depositor
Resolution (Å)	30.00 – 3.20 147.31 – 3.20	Depositor EDS
% Data completeness (in resolution range)	98.8 (30.00-3.20) 99.1 (147.31-3.20)	Depositor EDS
R_{merge}	0.11	Depositor
R_{sym}	0.11	Depositor
$\langle I/\sigma(I) \rangle$ ¹	0.27 (at 3.19Å)	Xtriage
Refinement program	CNS	Depositor
R, R_{free}	0.233 , 0.311 0.232 , 0.306	Depositor DCC
R_{free} test set	4077 reflections (5.02%)	wwPDB-VP
Wilson B-factor (Å ²)	82.5	Xtriage
Anisotropy	0.131	Xtriage
Bulk solvent k_{sol} (e/Å ³), B_{sol} (Å ²)	0.34 , 88.6	EDS
L-test for twinning ²	$\langle L \rangle = 0.45$, $\langle L^2 \rangle = 0.27$	Xtriage
Estimated twinning fraction	0.026 for k,h,-l	Xtriage
F_o, F_c correlation	0.92	EDS
Total number of atoms	26523	wwPDB-VP
Average B, all atoms (Å ²)	111.0	wwPDB-VP

Xtriage's analysis on translational NCS is as follows: *The largest off-origin peak in the Patterson function is 2.56% of the height of the origin peak. No significant pseudotranslation is detected.*

¹Intensities estimated from amplitudes.

²Theoretical values of $\langle |L| \rangle$, $\langle L^2 \rangle$ for acentric reflections are 0.5, 0.333 respectively for untwinned datasets, and 0.375, 0.2 for perfectly twinned datasets.

5 Model quality

5.1 Standard geometry

Bond lengths and bond angles in the following residue types are not validated in this section: 1CI, HEM

The Z score for a bond length (or angle) is the number of standard deviations the observed value is removed from the expected value. A bond length (or angle) with $|Z| > 5$ is considered an outlier worth inspection. RMSZ is the root-mean-square of all Z scores of the bond lengths (or angles).

Mol	Chain	Bond lengths		Bond angles	
		RMSZ	# Z >5	RMSZ	# Z >5
1	A	0.33	0/3828	0.59	0/5181
1	B	0.31	0/3828	0.56	0/5181
1	C	0.31	0/3828	0.55	0/5181
1	D	0.31	0/3828	0.58	0/5181
1	E	0.30	0/3828	0.55	0/5181
1	F	0.31	0/3828	0.55	0/5181
1	G	0.31	0/3828	0.56	0/5181
All	All	0.31	0/26796	0.56	0/36267

There are no bond length outliers.

There are no bond angle outliers.

There are no chirality outliers.

There are no planarity outliers.

5.2 Too-close contacts

In the following table, the Non-H and H(model) columns list the number of non-hydrogen atoms and hydrogen atoms in the chain respectively. The H(added) column lists the number of hydrogen atoms added and optimized by MolProbity. The Clashes column lists the number of clashes within the asymmetric unit, whereas Symm-Clashes lists symmetry-related clashes.

Mol	Chain	Non-H	H(model)	H(added)	Clashes	Symm-Clashes
1	A	3734	0	3744	240	0
1	B	3734	0	3744	260	0
1	C	3734	0	3744	313	0
1	D	3734	0	3744	278	0
1	E	3734	0	3745	326	0
1	F	3734	0	3744	328	0

Continued on next page...

Continued from previous page...

Mol	Chain	Non-H	H(model)	H(added)	Clashes	Symm-Clashes
1	G	3734	0	3744	305	0
2	A	43	0	30	2	0
2	B	43	0	30	3	0
2	C	43	0	30	4	0
2	D	43	0	30	6	0
2	E	43	0	30	8	0
2	F	43	0	30	7	0
2	G	43	0	30	4	0
3	A	12	0	7	1	0
3	B	12	0	7	3	0
3	C	12	0	7	3	0
3	D	12	0	7	2	0
3	E	12	0	7	1	0
3	F	12	0	7	3	0
3	G	12	0	7	4	0
All	All	26523	0	26468	2018	0

The all-atom clashscore is defined as the number of clashes found per 1000 atoms (including hydrogen atoms). The all-atom clashscore for this structure is 38.

The worst 5 of 2018 close contacts within the same asymmetric unit are listed below, sorted by their clash magnitude.

Atom-1	Atom-2	Interatomic distance (Å)	Clash overlap (Å)
1:D:114:ILE:HD13	1:D:294:SER:HB3	1.38	1.05
1:E:111:TYR:HB2	1:E:290:LEU:HD12	1.35	1.03
1:E:75:VAL:HG12	1:E:387:GLU:HB2	1.44	1.00
1:E:98:ARG:HG2	1:E:115:PHE:HA	1.47	0.97
1:D:216:VAL:HG11	1:F:228:PRO:HD3	1.48	0.96

There are no symmetry-related clashes.

5.3 Torsion angles [i](#)

5.3.1 Protein backbone [i](#)

In the following table, the Percentiles column shows the percent Ramachandran outliers of the chain as a percentile score with respect to all X-ray entries followed by that with respect to entries of similar resolution.

The Analysed column shows the number of residues for which the backbone conformation was analysed, and the total number of residues.

Mol	Chain	Analysed	Favoured	Allowed	Outliers	Percentiles	
1	A	463/478 (97%)	380 (82%)	60 (13%)	23 (5%)	2	16
1	B	463/478 (97%)	365 (79%)	76 (16%)	22 (5%)	2	17
1	C	463/478 (97%)	356 (77%)	80 (17%)	27 (6%)	1	13
1	D	463/478 (97%)	360 (78%)	82 (18%)	21 (4%)	2	18
1	E	463/478 (97%)	366 (79%)	69 (15%)	28 (6%)	1	12
1	F	463/478 (97%)	327 (71%)	97 (21%)	39 (8%)	1	5
1	G	463/478 (97%)	339 (73%)	88 (19%)	36 (8%)	1	6
All	All	3241/3346 (97%)	2493 (77%)	552 (17%)	196 (6%)	1	12

5 of 196 Ramachandran outliers are listed below:

Mol	Chain	Res	Type
1	A	29	LYS
1	A	102	ALA
1	A	137	MET
1	A	255	THR
1	A	285	HIS

5.3.2 Protein sidechains ⓘ

In the following table, the Percentiles column shows the percent sidechain outliers of the chain as a percentile score with respect to all X-ray entries followed by that with respect to entries of similar resolution.

The Analysed column shows the number of residues for which the sidechain conformation was analysed, and the total number of residues.

Mol	Chain	Analysed	Rotameric	Outliers	Percentiles	
1	A	411/423 (97%)	392 (95%)	19 (5%)	27	63
1	B	411/423 (97%)	398 (97%)	13 (3%)	39	71
1	C	411/423 (97%)	389 (95%)	22 (5%)	22	58
1	D	411/423 (97%)	390 (95%)	21 (5%)	24	60
1	E	411/423 (97%)	385 (94%)	26 (6%)	18	52
1	F	411/423 (97%)	389 (95%)	22 (5%)	22	58
1	G	411/423 (97%)	392 (95%)	19 (5%)	27	63
All	All	2877/2961 (97%)	2735 (95%)	142 (5%)	25	61

5 of 142 residues with a non-rotameric sidechain are listed below:

Mol	Chain	Res	Type
1	F	276	LYS
1	F	335	HIS
1	G	224	LEU
1	C	374	ASP
1	C	362	LEU

Sometimes sidechains can be flipped to improve hydrogen bonding and reduce clashes. 5 of 56 such sidechains are listed below:

Mol	Chain	Res	Type
1	D	369	HIS
1	G	479	ASN
1	E	330	GLN
1	G	369	HIS
1	G	42	ASN

5.3.3 RNA [i](#)

There are no RNA molecules in this entry.

5.4 Non-standard residues in protein, DNA, RNA chains [i](#)

There are no non-standard protein/DNA/RNA residues in this entry.

5.5 Carbohydrates [i](#)

There are no monosaccharides in this entry.

5.6 Ligand geometry [i](#)

14 ligands are modelled in this entry.

In the following table, the Counts columns list the number of bonds (or angles) for which Mogul statistics could be retrieved, the number of bonds (or angles) that are observed in the model and the number of bonds (or angles) that are defined in the Chemical Component Dictionary. The Link column lists molecule types, if any, to which the group is linked. The Z score for a bond length (or angle) is the number of standard deviations the observed value is removed from the expected value. A bond length (or angle) with $|Z| > 2$ is considered an outlier worth inspection. RMSZ is the root-mean-square of all Z scores of the bond lengths (or angles).

Mol	Type	Chain	Res	Link	Bond lengths			Bond angles		
					Counts	RMSZ	# Z > 2	Counts	RMSZ	# Z > 2
2	HEM	C	500	1,3	27,50,50	1.91	8 (29%)	17,82,82	1.68	3 (17%)
3	1CI	E	501	-	13,13,13	2.47	3 (23%)	15,17,17	0.61	0
3	1CI	D	501	2	13,13,13	2.48	3 (23%)	15,17,17	0.62	0
2	HEM	F	500	1,3	27,50,50	1.98	9 (33%)	17,82,82	1.56	3 (17%)
3	1CI	F	501	2	13,13,13	2.48	3 (23%)	15,17,17	0.61	0
2	HEM	A	500	1,3	27,50,50	1.93	10 (37%)	17,82,82	1.67	3 (17%)
2	HEM	E	500	-	27,50,50	2.03	10 (37%)	17,82,82	1.88	5 (29%)
3	1CI	A	501	2	13,13,13	2.47	3 (23%)	15,17,17	0.63	0
3	1CI	G	501	2	13,13,13	2.46	3 (23%)	15,17,17	0.55	0
2	HEM	G	500	1,3	27,50,50	1.95	9 (33%)	17,82,82	1.90	3 (17%)
3	1CI	C	501	2	13,13,13	2.47	3 (23%)	15,17,17	0.61	0
2	HEM	D	500	1,3	27,50,50	1.96	7 (25%)	17,82,82	1.75	4 (23%)
3	1CI	B	501	-	13,13,13	2.49	3 (23%)	15,17,17	0.62	0
2	HEM	B	500	1	27,50,50	1.99	10 (37%)	17,82,82	1.80	4 (23%)

In the following table, the Chirals column lists the number of chiral outliers, the number of chiral centers analysed, the number of these observed in the model and the number defined in the Chemical Component Dictionary. Similar counts are reported in the Torsion and Rings columns. '-' means no outliers of that kind were identified.

Mol	Type	Chain	Res	Link	Chirals	Torsions	Rings
2	HEM	C	500	1,3	-	0/6/54/54	-
3	1CI	E	501	-	-	0/4/4/4	0/2/2/2
3	1CI	D	501	2	-	0/4/4/4	0/2/2/2
2	HEM	F	500	1,3	-	0/6/54/54	-
3	1CI	F	501	2	-	0/4/4/4	0/2/2/2
2	HEM	A	500	1,3	-	0/6/54/54	-
2	HEM	E	500	-	-	0/6/54/54	-
3	1CI	A	501	2	-	0/4/4/4	0/2/2/2
3	1CI	G	501	2	-	0/4/4/4	0/2/2/2
2	HEM	G	500	1,3	-	0/6/54/54	-
3	1CI	C	501	2	-	0/4/4/4	0/2/2/2
2	HEM	D	500	1,3	-	0/6/54/54	-
3	1CI	B	501	-	-	0/4/4/4	0/2/2/2
2	HEM	B	500	1	-	0/6/54/54	-

The worst 5 of 84 bond length outliers are listed below:

Mol	Chain	Res	Type	Atoms	Z	Observed(Å)	Ideal(Å)
3	F	501	1CI	C6-N1	-7.18	1.33	1.45
3	D	501	1CI	C6-N1	-7.16	1.33	1.45
3	B	501	1CI	C6-N1	-7.12	1.33	1.45
3	E	501	1CI	C6-N1	-7.12	1.33	1.45
3	A	501	1CI	C6-N1	-7.11	1.33	1.45

The worst 5 of 25 bond angle outliers are listed below:

Mol	Chain	Res	Type	Atoms	Z	Observed(°)	Ideal(°)
2	G	500	HEM	CAD-CBD-CGD	4.73	120.60	112.67
2	E	500	HEM	CAD-CBD-CGD	4.31	119.91	112.67
2	B	500	HEM	CAD-CBD-CGD	4.10	119.55	112.67
2	C	500	HEM	CAD-CBD-CGD	3.75	118.95	112.67
2	A	500	HEM	CAD-CBD-CGD	3.59	118.70	112.67

There are no chirality outliers.

There are no torsion outliers.

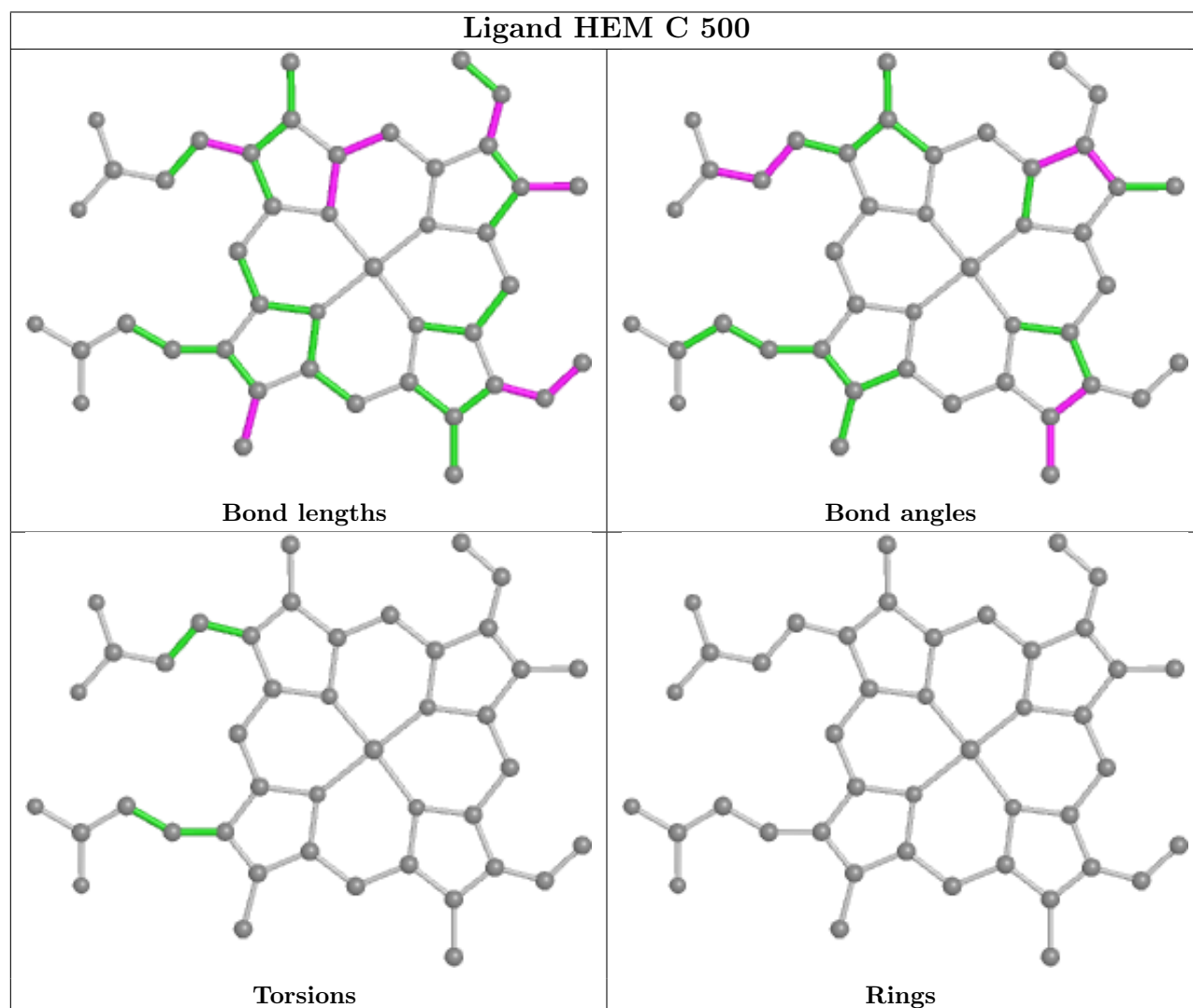
There are no ring outliers.

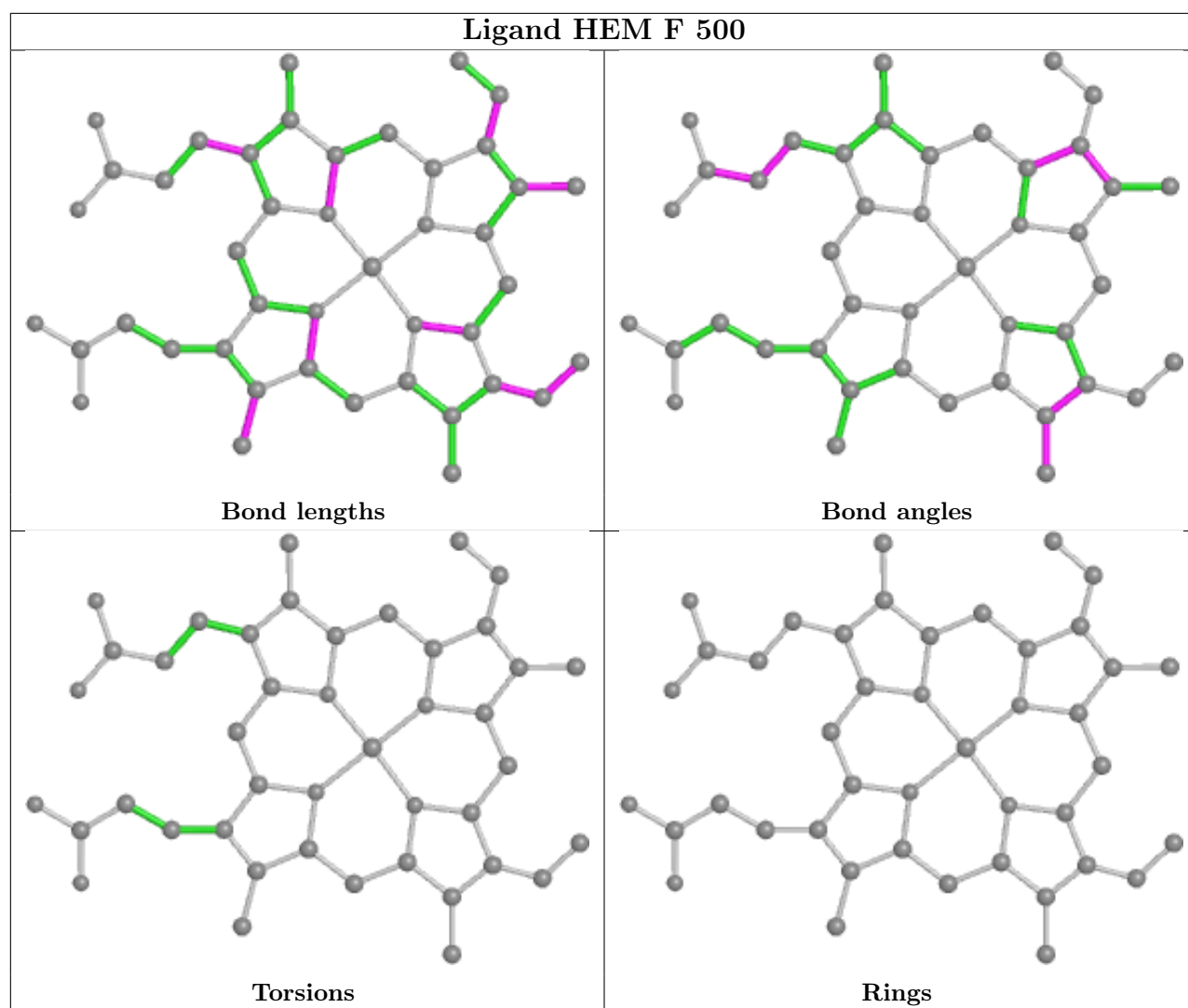
14 monomers are involved in 48 short contacts:

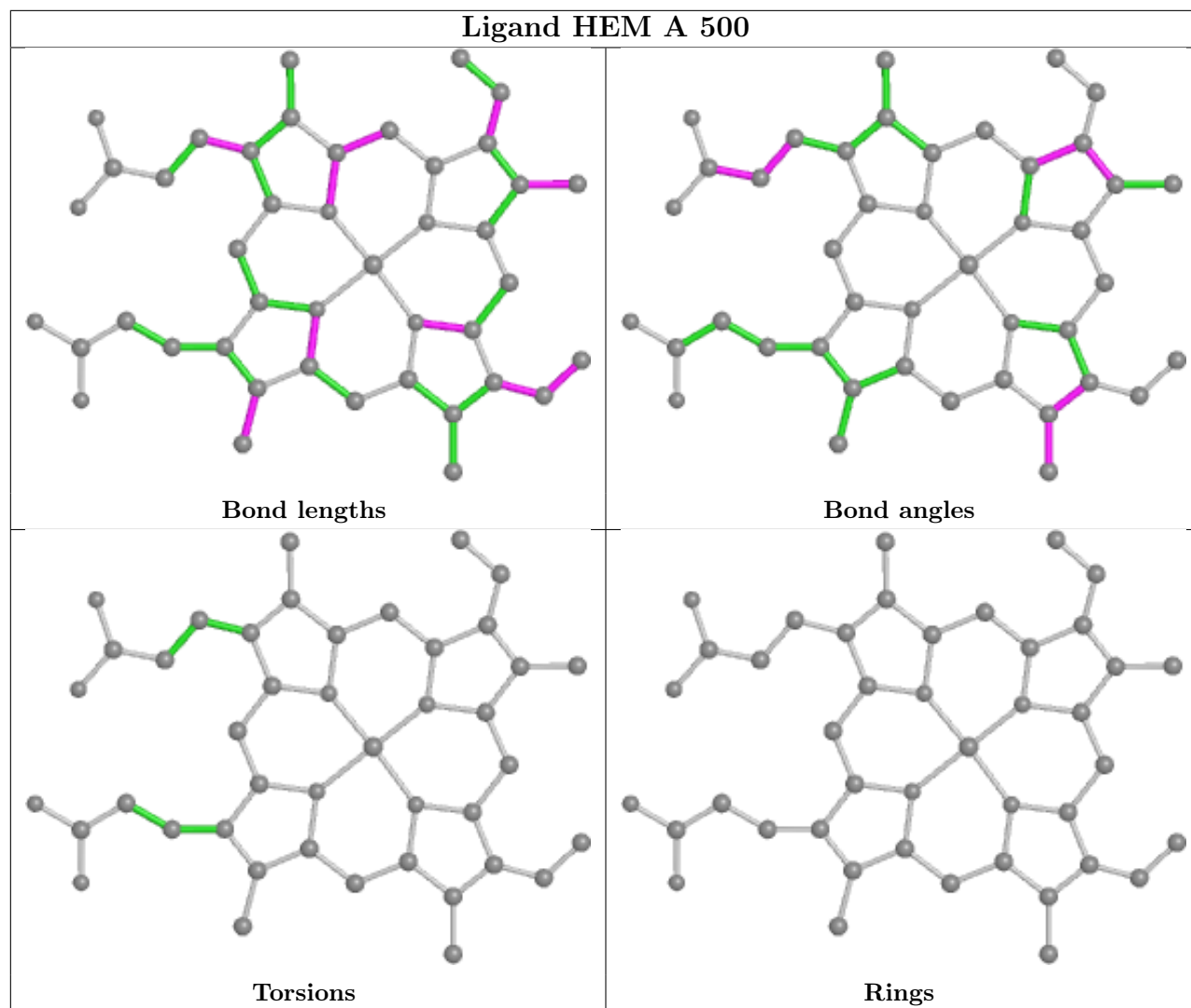
Mol	Chain	Res	Type	Clashes	Symm-Clashes
2	C	500	HEM	4	0
3	E	501	1CI	1	0
3	D	501	1CI	2	0
2	F	500	HEM	7	0
3	F	501	1CI	3	0
2	A	500	HEM	2	0
2	E	500	HEM	8	0
3	A	501	1CI	1	0
3	G	501	1CI	4	0
2	G	500	HEM	4	0
3	C	501	1CI	3	0
2	D	500	HEM	6	0
3	B	501	1CI	3	0
2	B	500	HEM	3	0

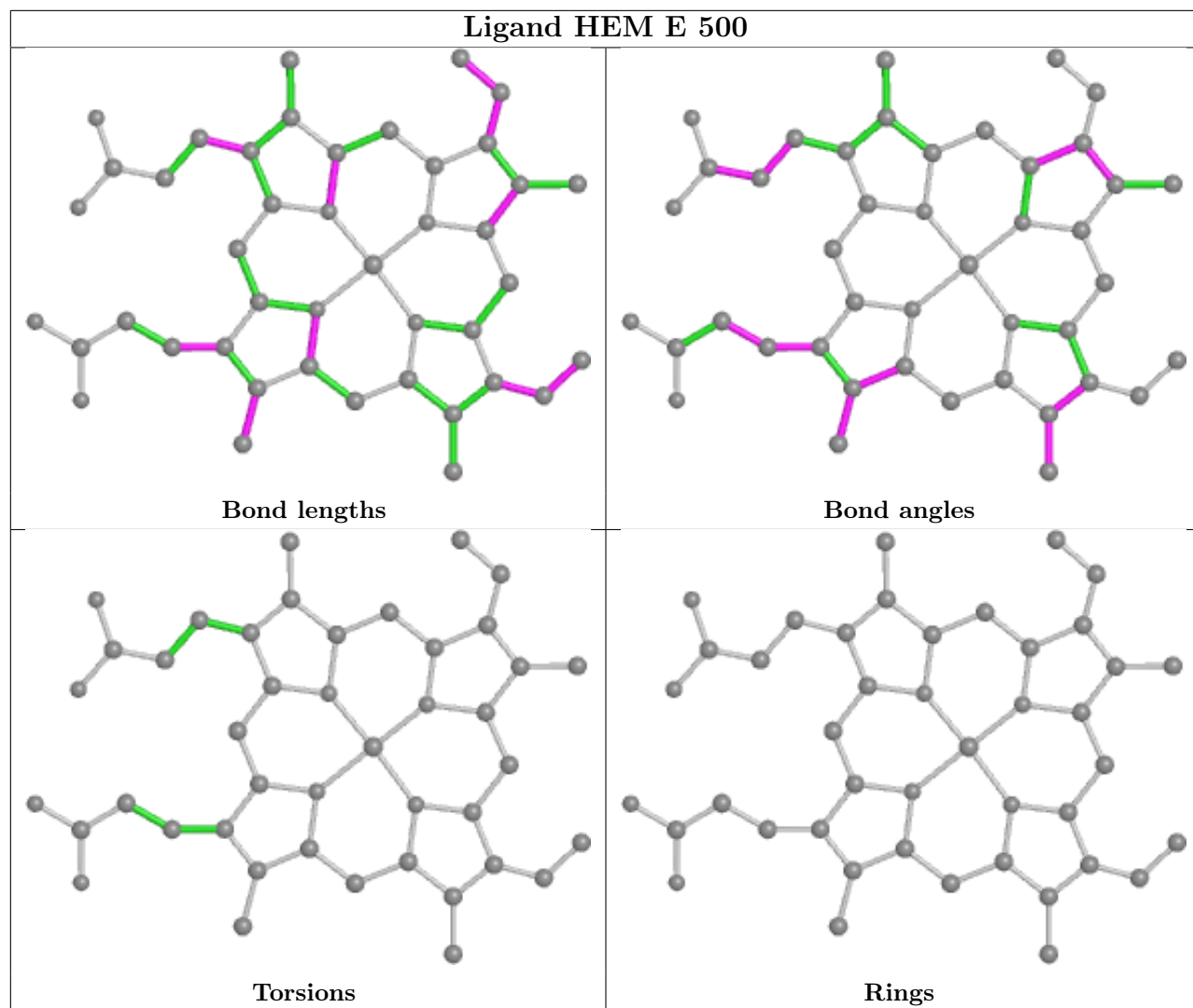
The following is a two-dimensional graphical depiction of Mogul quality analysis of bond lengths, bond angles, torsion angles, and ring geometry for all instances of the Ligand of Interest. In addition, ligands with molecular weight > 250 and outliers as shown on the validation Tables will also be included. For torsion angles, if less than 5% of the Mogul distribution of torsion angles is within 10 degrees of the torsion angle in question, then that torsion angle is considered an outlier. Any bond that is central to one or more torsion angles identified as an outlier by Mogul will be

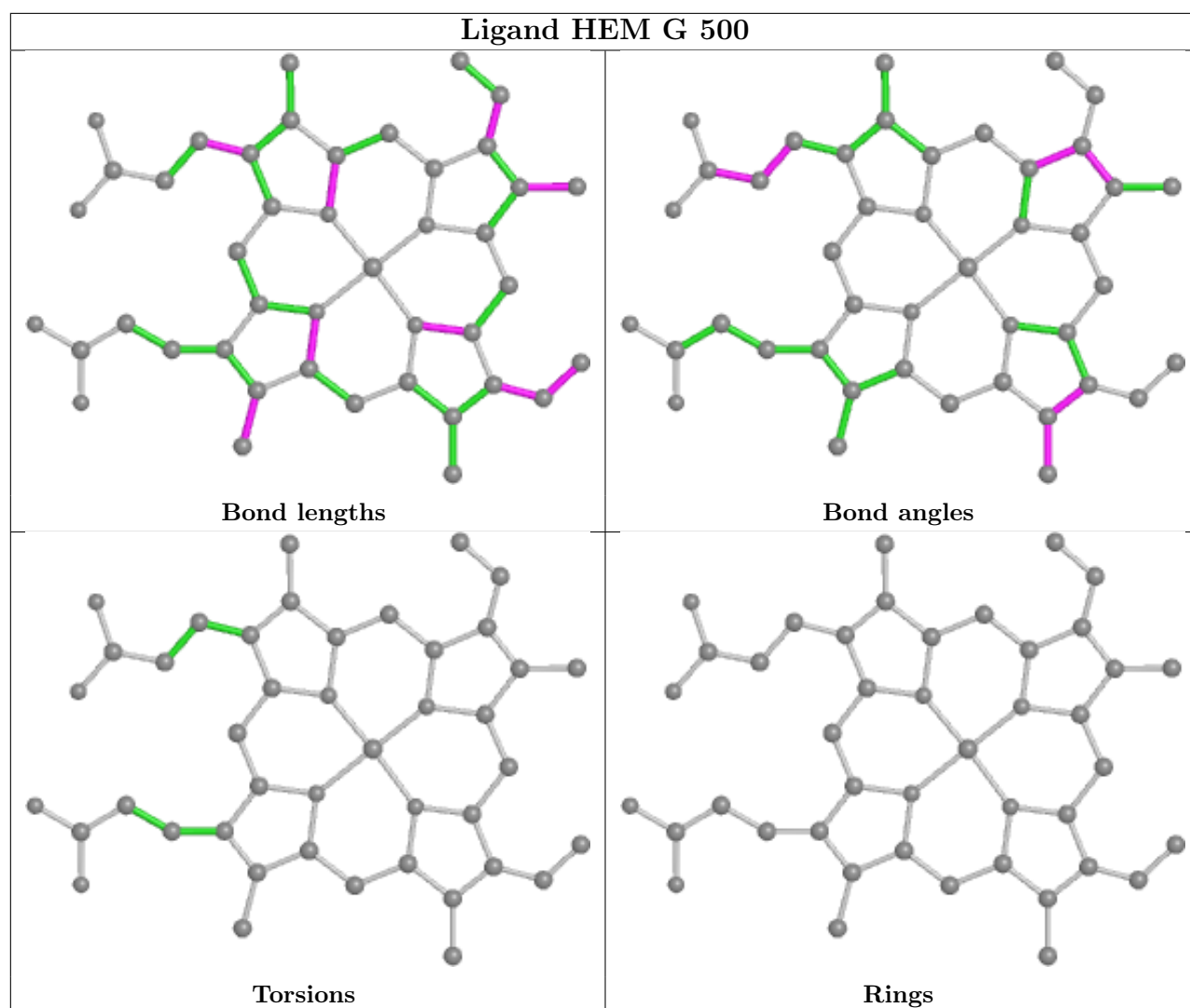
highlighted in the graph. For rings, the root-mean-square deviation (RMSD) between the ring in question and similar rings identified by Mogul is calculated over all ring torsion angles. If the average RMSD is greater than 60 degrees and the minimal RMSD between the ring in question and any Mogul-identified rings is also greater than 60 degrees, then that ring is considered an outlier. The outliers are highlighted in purple. The color gray indicates Mogul did not find sufficient equivalents in the CSD to analyse the geometry.

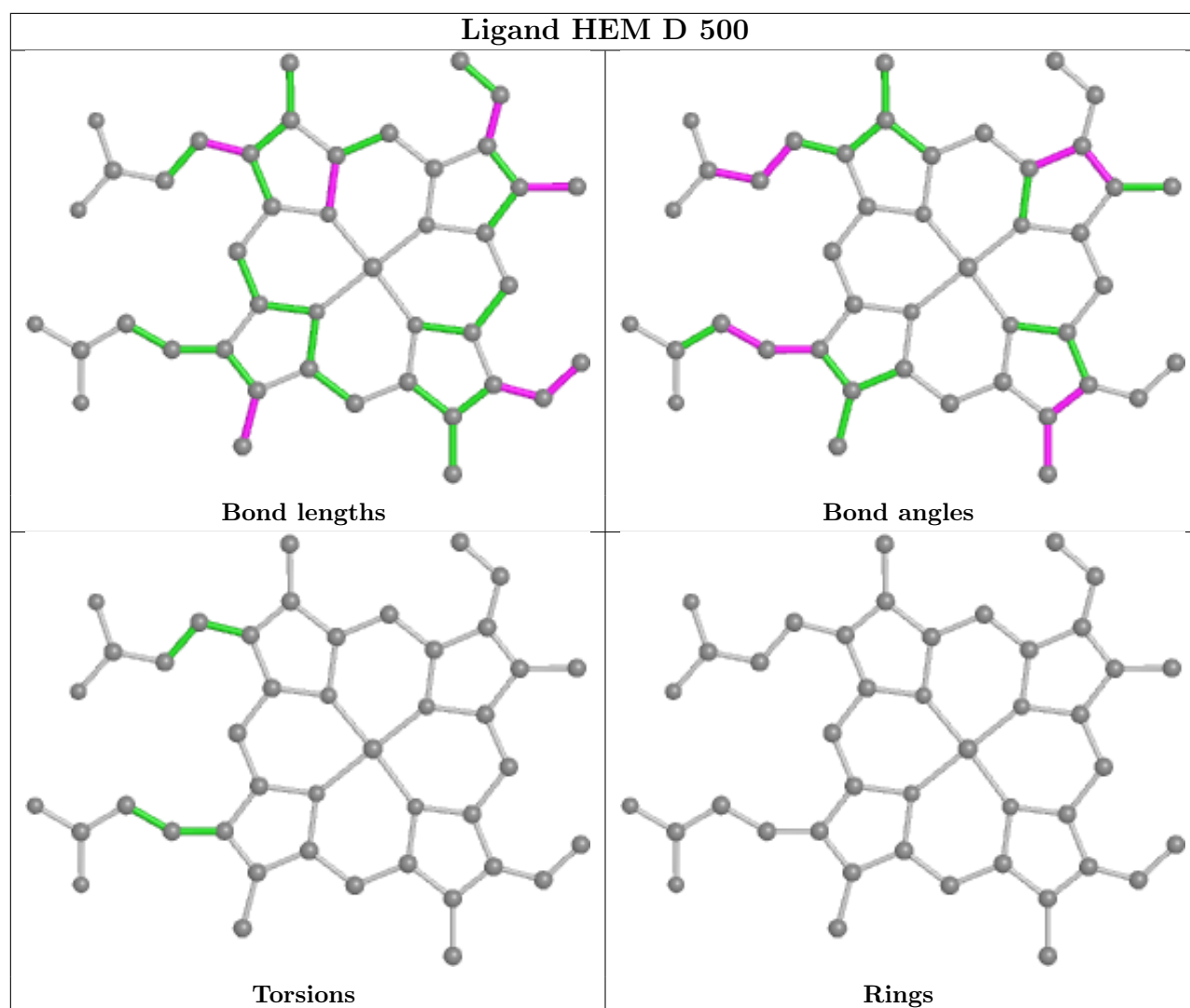


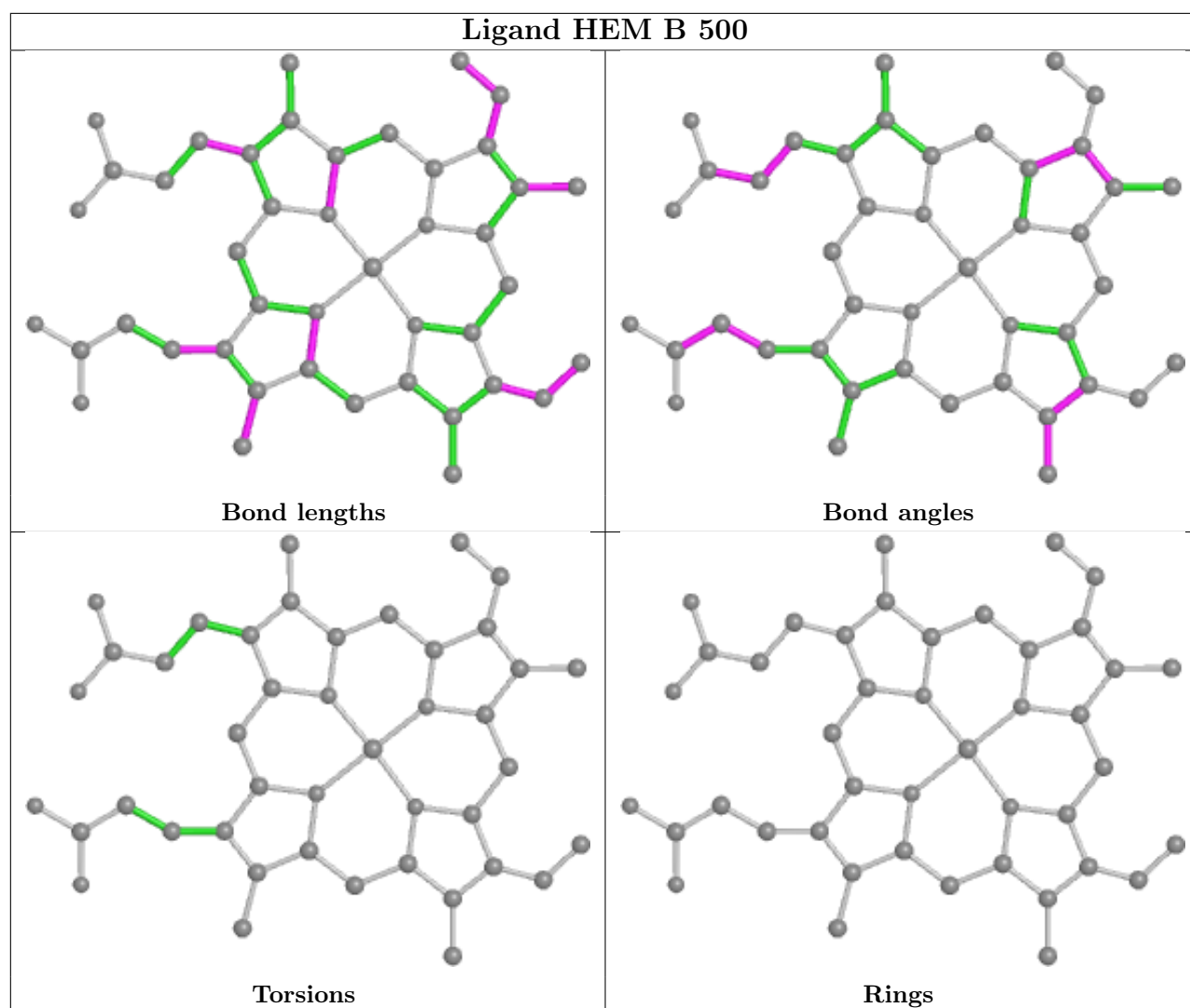












5.7 Other polymers [i](#)

There are no such residues in this entry.

5.8 Polymer linkage issues [i](#)

There are no chain breaks in this entry.

6 Fit of model and data [i](#)

6.1 Protein, DNA and RNA chains [i](#)

In the following table, the column labelled ‘#RSRZ > 2’ contains the number (and percentage) of RSRZ outliers, followed by percent RSRZ outliers for the chain as percentile scores relative to all X-ray entries and entries of similar resolution. The OWAB column contains the minimum, median, 95th percentile and maximum values of the occupancy-weighted average B-factor per residue. The column labelled ‘Q < 0.9’ lists the number of (and percentage) of residues with an average occupancy less than 0.9.

Mol	Chain	Analysed	<RSRZ>	#RSRZ>2	OWAB(Å ²)	Q<0.9
1	A	465/478 (97%)	0.63	19 (4%) 37 24	48, 86, 120, 169	0
1	B	465/478 (97%)	0.78	46 (9%) 7 4	70, 103, 144, 202	0
1	C	465/478 (97%)	0.78	51 (10%) 5 3	64, 112, 156, 186	0
1	D	465/478 (97%)	0.69	32 (6%) 16 9	64, 100, 144, 202	0
1	E	465/478 (97%)	0.87	63 (13%) 3 2	62, 115, 158, 202	0
1	F	465/478 (97%)	1.03	81 (17%) 1 1	70, 119, 165, 197	0
1	G	465/478 (97%)	0.99	80 (17%) 1 1	63, 119, 173, 202	0
All	All	3255/3346 (97%)	0.82	372 (11%) 5 3	48, 108, 160, 202	0

The worst 5 of 372 RSRZ outliers are listed below:

Mol	Chain	Res	Type	RSRZ
1	G	138	GLY	9.1
1	F	84	ILE	7.3
1	G	137	MET	7.2
1	C	259	SER	7.2
1	G	136	GLY	7.0

6.2 Non-standard residues in protein, DNA, RNA chains [i](#)

There are no non-standard protein/DNA/RNA residues in this entry.

6.3 Carbohydrates [i](#)

There are no monosaccharides in this entry.

6.4 Ligands ⓘ

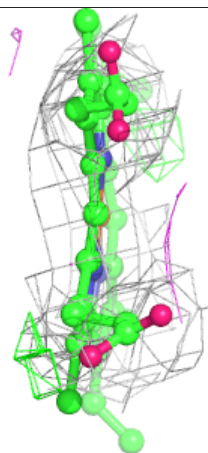
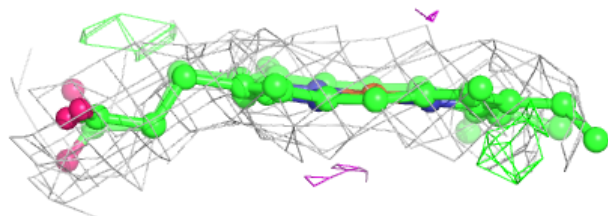
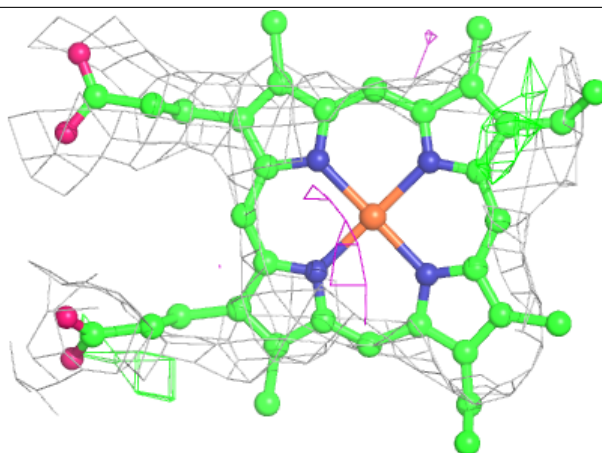
In the following table, the Atoms column lists the number of modelled atoms in the group and the number defined in the chemical component dictionary. The B-factors column lists the minimum, median, 95th percentile and maximum values of B factors of atoms in the group. The column labelled 'Q< 0.9' lists the number of atoms with occupancy less than 0.9.

Mol	Type	Chain	Res	Atoms	RSCC	RSR	B-factors(Å ²)	Q<0.9
3	1CI	E	501	12/12	0.73	0.81	107,107,107,107	0
3	1CI	G	501	12/12	0.79	0.51	107,107,107,107	0
3	1CI	A	501	12/12	0.80	0.54	107,107,107,107	0
3	1CI	C	501	12/12	0.81	0.56	107,107,107,107	0
3	1CI	B	501	12/12	0.82	0.41	107,107,107,107	0
3	1CI	F	501	12/12	0.88	0.39	107,107,107,107	0
3	1CI	D	501	12/12	0.88	0.36	107,107,107,107	0
2	HEM	F	500	43/43	0.93	0.38	111,111,111,111	0
2	HEM	B	500	43/43	0.93	0.39	78,78,78,78	0
2	HEM	G	500	43/43	0.94	0.39	109,109,109,109	0
2	HEM	D	500	43/43	0.94	0.35	102,102,102,102	0
2	HEM	C	500	43/43	0.95	0.32	93,93,93,93	0
2	HEM	A	500	43/43	0.95	0.39	78,78,78,78	0
2	HEM	E	500	43/43	0.95	0.34	69,69,69,69	0

The following is a graphical depiction of the model fit to experimental electron density of all instances of the Ligand of Interest. In addition, ligands with molecular weight > 250 and outliers as shown on the geometry validation Tables will also be included. Each fit is shown from different orientation to approximate a three-dimensional view.

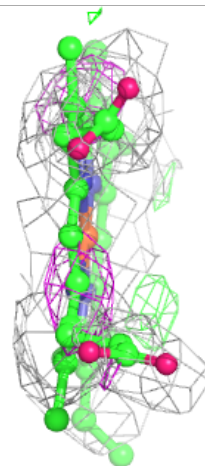
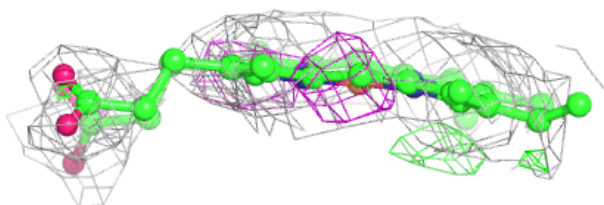
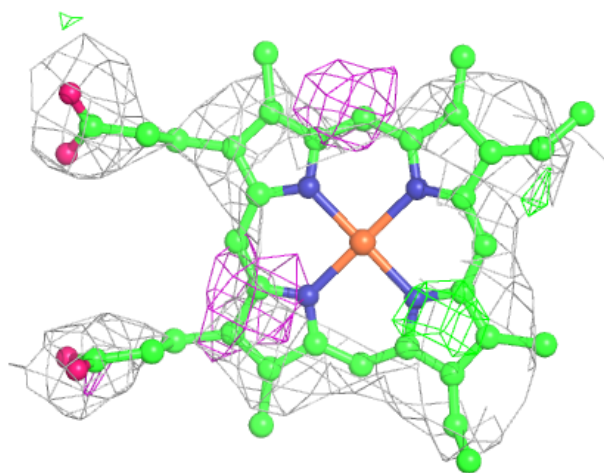
Electron density around HEM F 500:

$2mF_o - DF_c$ (at 0.7 rmsd) in gray
 $mF_o - DF_c$ (at 3 rmsd) in purple (negative)
and green (positive)



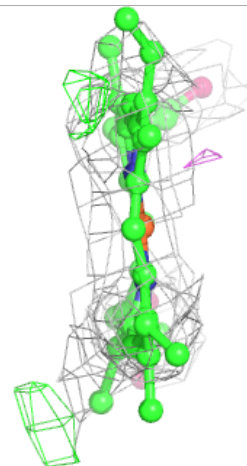
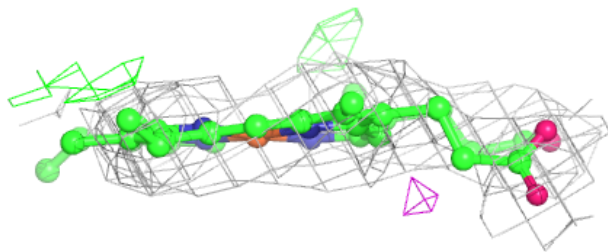
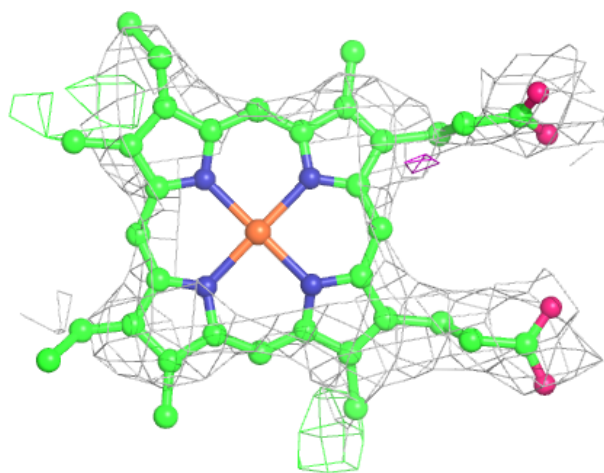
Electron density around HEM B 500:

$2mF_o-DF_c$ (at 0.7 rmsd) in gray
 mF_o-DF_c (at 3 rmsd) in purple (negative)
and green (positive)



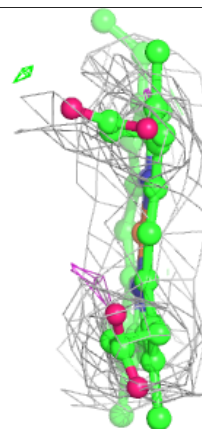
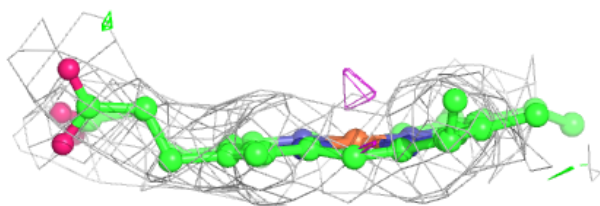
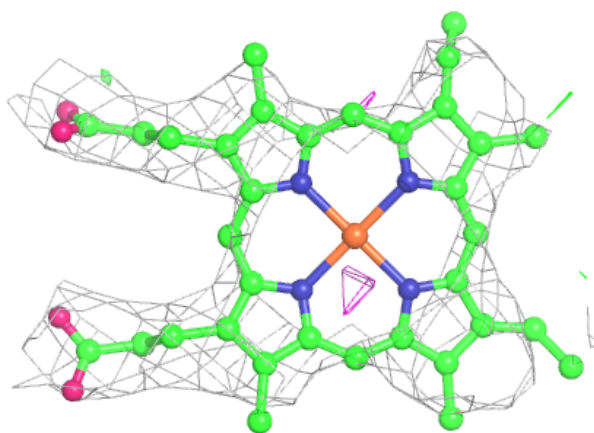
Electron density around HEM G 500:

$2mF_o-DF_c$ (at 0.7 rmsd) in gray
 mF_o-DF_c (at 3 rmsd) in purple (negative)
and green (positive)



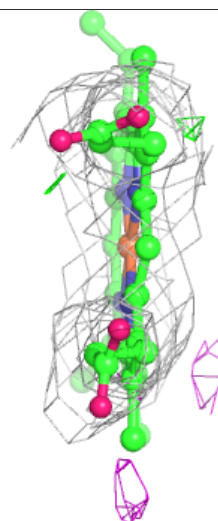
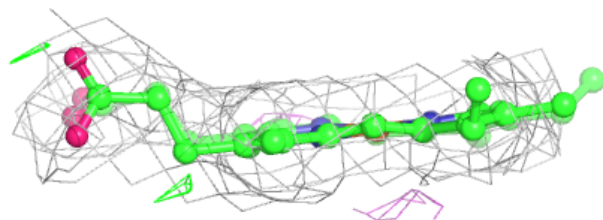
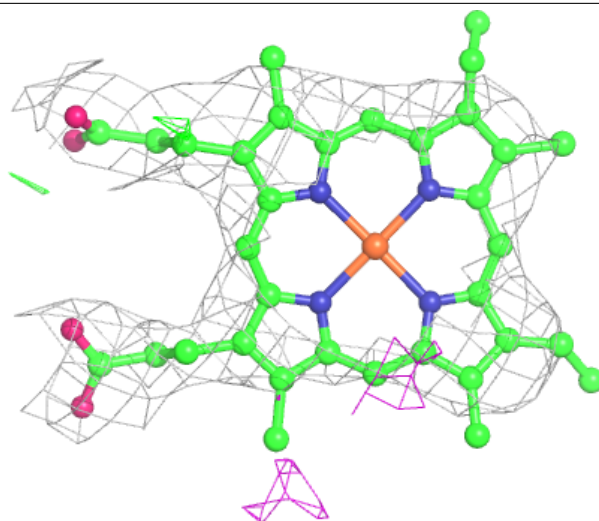
Electron density around HEM D 500:

$2mF_o-DF_c$ (at 0.7 rmsd) in gray
 mF_o-DF_c (at 3 rmsd) in purple (negative)
and green (positive)



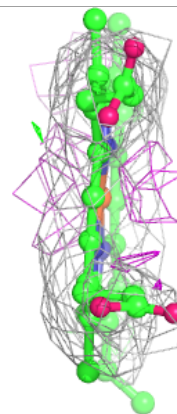
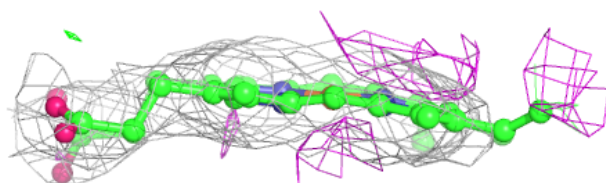
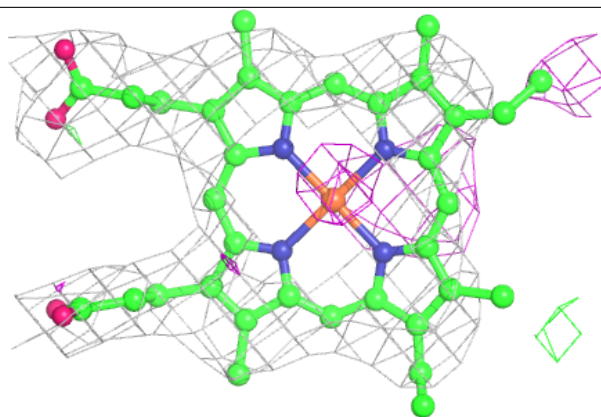
Electron density around HEM C 500:

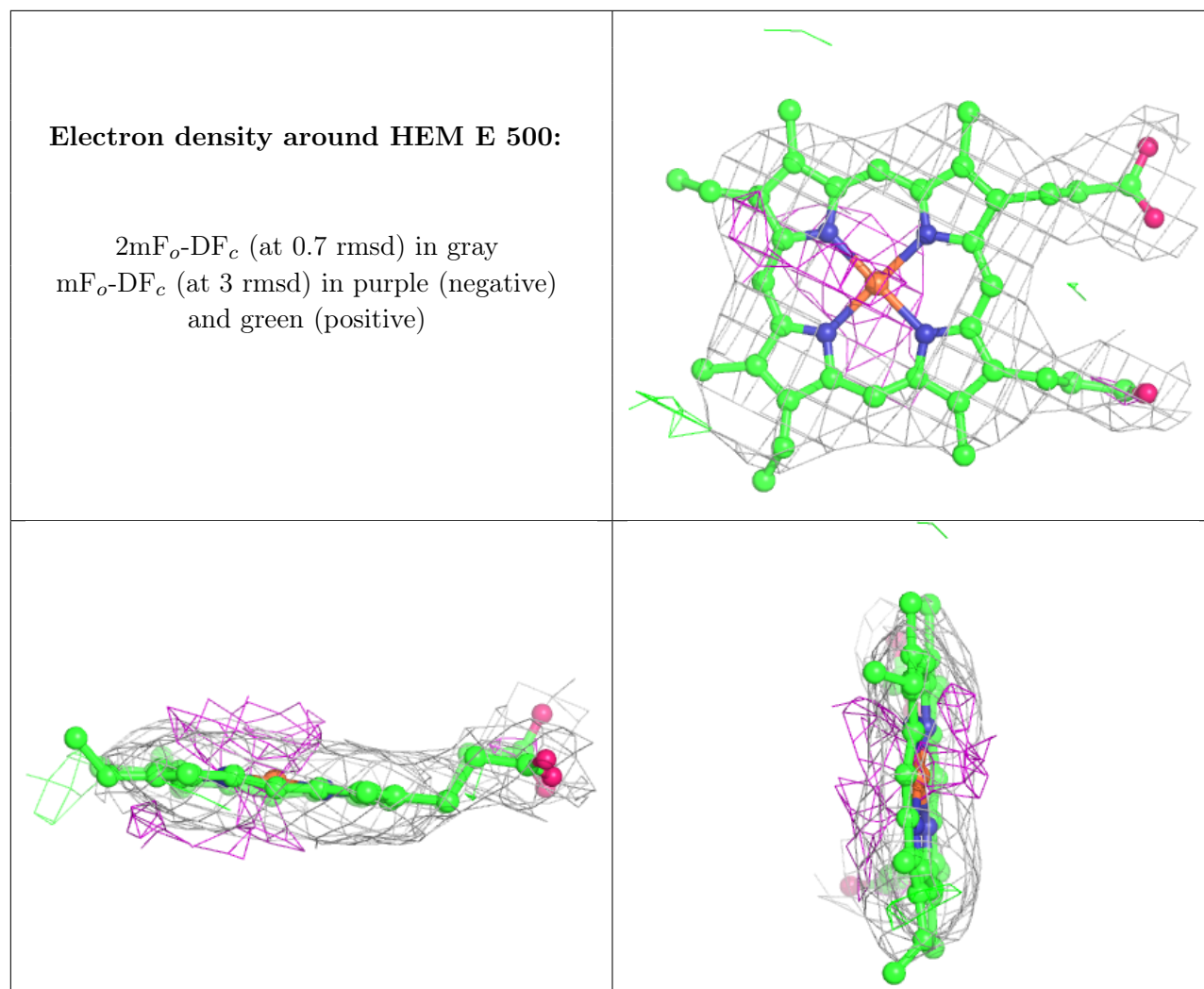
$2mF_o-DF_c$ (at 0.7 rmsd) in gray
 mF_o-DF_c (at 3 rmsd) in purple (negative)
and green (positive)



Electron density around HEM A 500:

$2mF_o-DF_c$ (at 0.7 rmsd) in gray
 mF_o-DF_c (at 3 rmsd) in purple (negative)
and green (positive)





6.5 Other polymers [i](#)

There are no such residues in this entry.