



Full wwPDB X-ray Structure Validation Report ⓘ

Sep 13, 2020 – 12:01 PM BST

PDB ID : 3QAX
Title : Crystal structure analysis of the cpb0502
Authors : Chang, J.E.; Hwang, K.Y.
Deposited on : 2011-01-12
Resolution : 2.00 Å(reported)

This is a Full wwPDB X-ray Structure Validation Report for a publicly released PDB entry.

We welcome your comments at validation@mail.wwpdb.org

A user guide is available at

<https://www.wwpdb.org/validation/2017/XrayValidationReportHelp>

with specific help available everywhere you see the ⓘ symbol.

The following versions of software and data (see [references ⓘ](#)) were used in the production of this report:

MolProbity : 4.02b-467
Mogul : 1.8.5 (274361), CSD as541be (2020)
Xtriage (Phenix) : 1.13
EDS : 2.14.4.dev1
Percentile statistics : 20191225.v01 (using entries in the PDB archive December 25th 2019)
Refmac : 5.8.0158
CCP4 : 7.0.044 (Gargrove)
Ideal geometry (proteins) : Engh & Huber (2001)
Ideal geometry (DNA, RNA) : Parkinson et al. (1996)
Validation Pipeline (wwPDB-VP) : 2.14.4.dev1

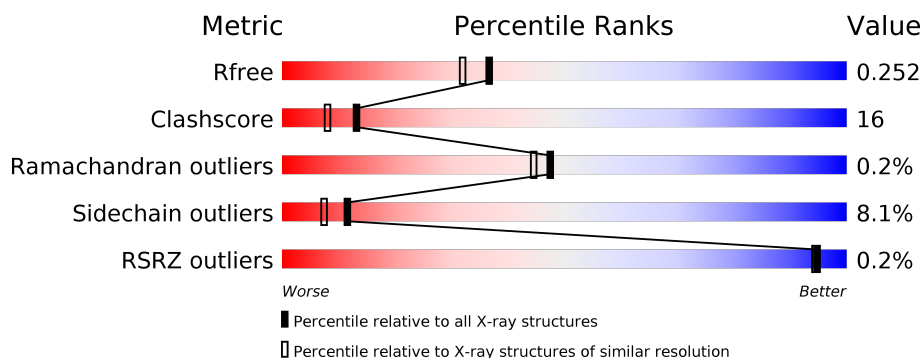
1 Overall quality at a glance ⓘ

The following experimental techniques were used to determine the structure:

X-RAY DIFFRACTION

The reported resolution of this entry is 2.00 Å.

Percentile scores (ranging between 0-100) for global validation metrics of the entry are shown in the following graphic. The table shows the number of entries on which the scores are based.



Metric	Whole archive (#Entries)	Similar resolution (#Entries, resolution range(Å))
R_{free}	130704	8085 (2.00-2.00)
Clashscore	141614	9178 (2.00-2.00)
Ramachandran outliers	138981	9054 (2.00-2.00)
Sidechain outliers	138945	9053 (2.00-2.00)
RSRZ outliers	127900	7900 (2.00-2.00)

The table below summarises the geometric issues observed across the polymeric chains and their fit to the electron density. The red, orange, yellow and green segments on the lower bar indicate the fraction of residues that contain outliers for ≥ 3 , 2, 1 and 0 types of geometric quality criteria respectively. A grey segment represents the fraction of residues that are not modelled. The numeric value for each fraction is indicated below the corresponding segment, with a dot representing fractions $\leq 5\%$. The upper red bar (where present) indicates the fraction of residues that have poor fit to the electron density. The numeric value is given above the bar.

Mol	Chain	Length	Quality of chain
1	A	268	
1	B	268	

2 Entry composition

There are 3 unique types of molecules in this entry. The entry contains 4181 atoms, of which 0 are hydrogens and 0 are deuteriums.

In the tables below, the ZeroOcc column contains the number of atoms modelled with zero occupancy, the AltConf column contains the number of residues with at least one atom in alternate conformation and the Trace column contains the number of residues modelled with at most 2 atoms.

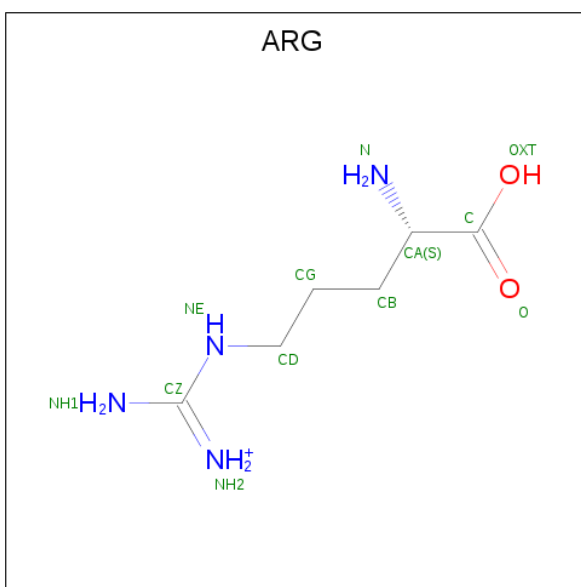
- Molecule 1 is a protein called Probable ABC transporter arginine-binding protein ArtJ.

Mol	Chain	Residues	Atoms					ZeroOcc	AltConf	Trace
1	A	232	Total	C	N	O	S	0	0	0
			1817	1167	299	345	6			
1	B	235	Total	C	N	O	S	0	0	0
			1844	1181	306	351	6			

There are 20 discrepancies between the modelled and reference sequences:

Chain	Residue	Modelled	Actual	Comment	Reference
A	128	TYR	PHE	CONFLICT	UNP Q9Z869
A	239	ALA	-	EXPRESSION TAG	UNP Q9Z869
A	240	ALA	-	EXPRESSION TAG	UNP Q9Z869
A	241	GLN	-	EXPRESSION TAG	UNP Q9Z869
A	242	VAL	-	EXPRESSION TAG	UNP Q9Z869
A	243	TRP	-	EXPRESSION TAG	UNP Q9Z869
A	244	GLY	-	EXPRESSION TAG	UNP Q9Z869
A	245	HIS	-	EXPRESSION TAG	UNP Q9Z869
A	246	THR	-	EXPRESSION TAG	UNP Q9Z869
A	247	PRO	-	EXPRESSION TAG	UNP Q9Z869
B	128	TYR	PHE	CONFLICT	UNP Q9Z869
B	239	ALA	-	EXPRESSION TAG	UNP Q9Z869
B	240	ALA	-	EXPRESSION TAG	UNP Q9Z869
B	241	GLN	-	EXPRESSION TAG	UNP Q9Z869
B	242	VAL	-	EXPRESSION TAG	UNP Q9Z869
B	243	TRP	-	EXPRESSION TAG	UNP Q9Z869
B	244	GLY	-	EXPRESSION TAG	UNP Q9Z869
B	245	HIS	-	EXPRESSION TAG	UNP Q9Z869
B	246	THR	-	EXPRESSION TAG	UNP Q9Z869
B	247	PRO	-	EXPRESSION TAG	UNP Q9Z869

- Molecule 2 is ARGinine (three-letter code: ARG) (formula: $C_6H_{15}N_4O_2$).



Mol	Chain	Residues	Atoms				ZeroOcc	AltConf
2	A	1	Total	C	N	O	0	0
			12	6	4	2		
2	B	1	Total	C	N	O	0	0
			12	6	4	2		

- Molecule 3 is water.

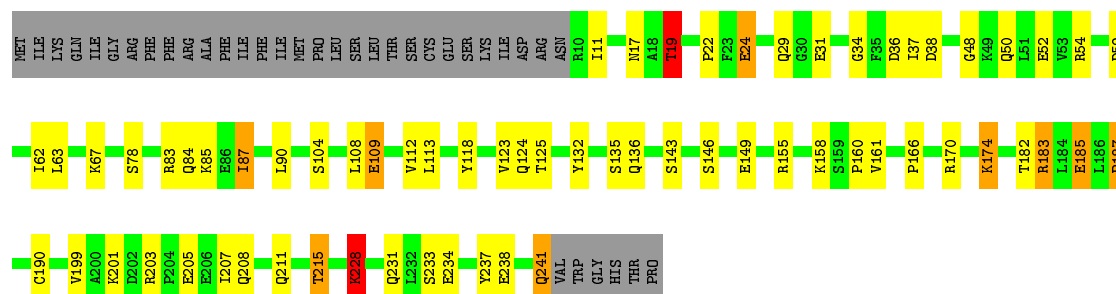
Mol	Chain	Residues	Atoms		ZeroOcc	AltConf
3	A	256	Total	O	0	0
			256	256		
3	B	240	Total	O	0	0
			240	240		

3 Residue-property plots [i](#)

These plots are drawn for all protein, RNA, DNA and oligosaccharide chains in the entry. The first graphic for a chain summarises the proportions of the various outlier classes displayed in the second graphic. The second graphic shows the sequence view annotated by issues in geometry and electron density. Residues are color-coded according to the number of geometric quality criteria for which they contain at least one outlier: green = 0, yellow = 1, orange = 2 and red = 3 or more. A red dot above a residue indicates a poor fit to the electron density ($RSRZ > 2$). Stretches of 2 or more consecutive residues without any outlier are shown as a green connector. Residues present in the sample, but not in the model, are shown in grey.

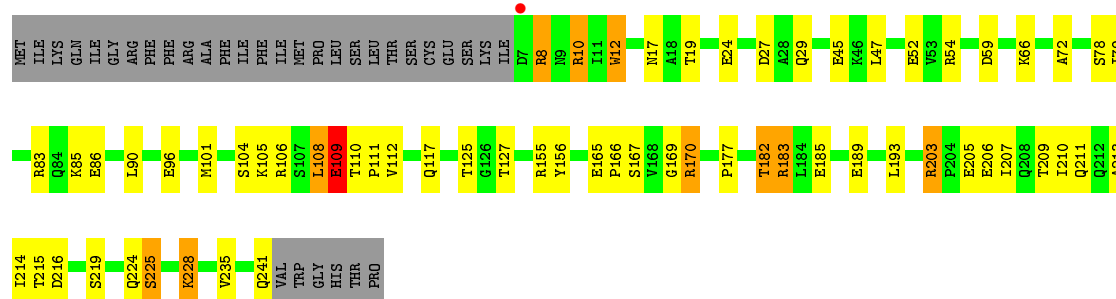
- Molecule 1: Probable ABC transporter arginine-binding protein ArtJ

Chain A: 



- Molecule 1: Probable ABC transporter arginine-binding protein ArtJ

Chain B: 



4 Data and refinement statistics

Property	Value	Source
Space group	P 1 21 1	Depositor
Cell constants a, b, c, α , β , γ	40.33Å 51.73Å 119.69Å 90.00° 91.03° 90.00°	Depositor
Resolution (Å)	29.92 – 2.00 29.92 – 1.79	Depositor EDS
% Data completeness (in resolution range)	93.3 (29.92-2.00) 85.8 (29.92-1.79)	Depositor EDS
R_{merge}	(Not available)	Depositor
R_{sym}	(Not available)	Depositor
$\langle I/\sigma(I) \rangle$ ¹	2.23 (at 1.78Å)	Xtriage
Refinement program	CNS, REFMAC 5.5.0102	Depositor
R, R_{free}	0.184 , 0.251 0.185 , 0.252	Depositor DCC
R_{free} test set	2140 reflections (5.05%)	wwPDB-VP
Wilson B-factor (Å ²)	10.3	Xtriage
Anisotropy	0.204	Xtriage
Bulk solvent k_{sol} (e/Å ³), B_{sol} (Å ²)	0.32 , 22.9	EDS
L-test for twinning ²	$\langle L \rangle = 0.47$, $\langle L^2 \rangle = 0.30$	Xtriage
Estimated twinning fraction	0.246 for h,-k,-l	Xtriage
F_o, F_c correlation	0.93	EDS
Total number of atoms	4181	wwPDB-VP
Average B, all atoms (Å ²)	15.0	wwPDB-VP

Xtriage's analysis on translational NCS is as follows: *The largest off-origin peak in the Patterson function is 6.86% of the height of the origin peak. No significant pseudotranslation is detected.*

¹Intensities estimated from amplitudes.

²Theoretical values of $\langle |L| \rangle$, $\langle L^2 \rangle$ for acentric reflections are 0.5, 0.333 respectively for untwinned datasets, and 0.375, 0.2 for perfectly twinned datasets.

5 Model quality

5.1 Standard geometry

The Z score for a bond length (or angle) is the number of standard deviations the observed value is removed from the expected value. A bond length (or angle) with $|Z| > 5$ is considered an outlier worth inspection. RMSZ is the root-mean-square of all Z scores of the bond lengths (or angles).

Mol	Chain	Bond lengths		Bond angles	
		RMSZ	$\# Z > 5$	RMSZ	$\# Z > 5$
1	A	1.04	2/1852 (0.1%)	0.89	3/2518 (0.1%)
1	B	1.06	3/1879 (0.2%)	0.88	5/2554 (0.2%)
All	All	1.05	5/3731 (0.1%)	0.89	8/5072 (0.2%)

Chiral center outliers are detected by calculating the chiral volume of a chiral center and verifying if the center is modelled as a planar moiety or with the opposite hand. A planarity outlier is detected by checking planarity of atoms in a peptide group, atoms in a mainchain group or atoms of a sidechain that are expected to be planar.

Mol	Chain	#Chirality outliers	#Planarity outliers
1	A	0	1
1	B	0	1
All	All	0	2

All (5) bond length outliers are listed below:

Mol	Chain	Res	Type	Atoms	Z	Observed(Å)	Ideal(Å)
1	B	109	GLU	CG-CD	6.45	1.61	1.51
1	A	205	GLU	CG-CD	6.29	1.61	1.51
1	A	228	LYS	CD-CE	5.71	1.65	1.51
1	B	109	GLU	CB-CG	5.69	1.62	1.52
1	B	12	TRP	CG-CD1	5.50	1.44	1.36

All (8) bond angle outliers are listed below:

Mol	Chain	Res	Type	Atoms	Z	Observed(°)	Ideal(°)
1	B	170	ARG	NE-CZ-NH1	7.07	123.83	120.30
1	B	203	ARG	NE-CZ-NH1	-6.89	116.86	120.30
1	A	19	THR	N-CA-CB	-6.84	97.30	110.30
1	B	59	ASP	CB-CG-OD1	6.11	123.80	118.30
1	A	83	ARG	NE-CZ-NH2	-6.05	117.27	120.30
1	B	83	ARG	NE-CZ-NH2	-5.68	117.46	120.30
1	A	83	ARG	NE-CZ-NH1	5.07	122.83	120.30

Continued on next page...

Continued from previous page...

Mol	Chain	Res	Type	Atoms	Z	Observed($^{\circ}$)	Ideal($^{\circ}$)
1	B	27	ASP	CB-CG-OD1	5.04	122.84	118.30

There are no chirality outliers.

All (2) planarity outliers are listed below:

Mol	Chain	Res	Type	Group
1	A	19	THR	Peptide
1	B	19	THR	Peptide

5.2 Too-close contacts

In the following table, the Non-H and H(model) columns list the number of non-hydrogen atoms and hydrogen atoms in the chain respectively. The H(added) column lists the number of hydrogen atoms added and optimized by MolProbity. The Clashes column lists the number of clashes within the asymmetric unit, whereas Symm-Clashes lists symmetry related clashes.

Mol	Chain	Non-H	H(model)	H(added)	Clashes	Symm-Clashes
1	A	1817	0	1853	66	0
1	B	1844	0	1876	58	0
2	A	12	0	12	2	0
2	B	12	0	12	4	0
3	A	256	0	0	24	0
3	B	240	0	0	26	0
All	All	4181	0	3753	121	0

The all-atom clashscore is defined as the number of clashes found per 1000 atoms (including hydrogen atoms). The all-atom clashscore for this structure is 16.

All (121) close contacts within the same asymmetric unit are listed below, sorted by their clash magnitude.

Atom-1	Atom-2	Interatomic distance (Å)	Clash overlap (Å)
1:A:183:ARG:HG3	1:A:183:ARG:HH11	1.06	1.19
1:B:12:TRP:NE1	3:B:436:HOH:O	1.85	1.06
1:B:105:LYS:HG2	3:B:286:HOH:O	1.67	0.94
1:B:213:ALA:HB3	3:B:292:HOH:O	1.71	0.90
1:B:52:GLU:HG3	3:B:318:HOH:O	1.70	0.89
1:A:62:ILE:HD12	1:A:87:ILE:HD12	1.56	0.88
1:B:17:ASN:HD22	2:B:600:ARG:HH12	1.20	0.86
1:B:189:GLU:OE1	3:B:291:HOH:O	1.93	0.85

Continued on next page...

Continued from previous page...

Atom-1	Atom-2	Interatomic distance (Å)	Clash overlap (Å)
1:A:48:GLY:HA2	3:A:460:HOH:O	1.76	0.84
1:A:190:CYS:SG	3:A:411:HOH:O	2.37	0.83
1:B:12:TRP:CE2	3:B:436:HOH:O	2.28	0.81
1:A:183:ARG:HG3	1:A:183:ARG:NH1	1.84	0.81
1:B:12:TRP:CZ2	3:B:436:HOH:O	2.34	0.81
1:A:48:GLY:CA	3:A:460:HOH:O	2.30	0.77
1:A:158:LYS:O	3:A:428:HOH:O	2.01	0.77
1:B:66:LYS:HE3	1:B:86:GLU:HB3	1.66	0.77
1:A:52:GLU:CD	1:A:54:ARG:NH2	2.38	0.76
1:A:112:VAL:HG11	1:A:182:THR:HG21	1.68	0.73
1:A:182:THR:HG23	3:A:261:HOH:O	1.88	0.73
1:A:17:ASN:HD21	1:A:19:THR:HG21	1.54	0.72
1:A:17:ASN:ND2	1:A:19:THR:HG21	2.04	0.72
1:A:34:GLY:O	3:A:301:HOH:O	2.09	0.71
1:A:78:SER:HG	2:A:600:ARG:N	1.90	0.70
1:A:84:GLN:O	1:A:201:LYS:HE3	1.93	0.68
1:B:52:GLU:CD	1:B:54:ARG:NH2	2.48	0.67
1:A:17:ASN:HD22	2:A:600:ARG:HH12	1.40	0.67
1:A:48:GLY:N	3:A:460:HOH:O	2.28	0.66
1:B:10:ARG:NH2	3:B:494:HOH:O	2.27	0.66
1:B:12:TRP:HZ3	3:B:403:HOH:O	1.80	0.65
1:B:183:ARG:NH1	3:B:345:HOH:O	2.29	0.65
1:A:211:GLN:O	1:A:215:THR:HG23	1.98	0.64
1:B:112:VAL:HG21	1:B:182:THR:HG21	1.80	0.64
1:A:183:ARG:NH1	1:A:183:ARG:O	2.33	0.62
1:B:117:GLN:HB2	3:B:316:HOH:O	1.99	0.62
1:A:37:ILE:HB	3:A:301:HOH:O	2.02	0.59
1:B:213:ALA:CB	3:B:292:HOH:O	2.41	0.59
1:B:106:ARG:NH2	1:B:177:PRO:O	2.30	0.59
1:A:104:SER:HB3	1:A:161:VAL:HG12	1.83	0.59
1:A:228:LYS:HA	1:A:228:LYS:HE2	1.84	0.59
1:B:66:LYS:CE	1:B:86:GLU:HB3	2.32	0.58
1:B:101:MET:SD	1:B:169:GLY:HA3	2.43	0.58
1:B:108:LEU:CD2	1:B:109:GLU:HG3	2.34	0.58
1:B:111:PRO:O	3:B:312:HOH:O	2.17	0.58
1:B:166:PRO:HD2	3:B:335:HOH:O	2.04	0.58
1:B:224:GLN:HB3	3:B:466:HOH:O	2.04	0.58
1:A:187:PRO:HG2	3:A:411:HOH:O	2.05	0.56
1:A:199:VAL:HB	1:A:207:ILE:CD1	2.36	0.56
1:A:19:THR:HG23	1:A:124:GLN:NE2	2.20	0.56
1:A:123:VAL:O	1:A:143:SER:HA	2.05	0.55

Continued on next page...

Continued from previous page...

Atom-1	Atom-2	Interatomic distance (Å)	Clash overlap (Å)
1:A:19:THR:CG2	1:A:124:GLN:NE2	2.70	0.55
1:A:50:GLN:HG3	3:A:379:HOH:O	2.07	0.54
1:A:17:ASN:ND2	1:A:19:THR:CG2	2.69	0.54
1:A:52:GLU:CD	1:A:54:ARG:HH21	2.09	0.54
1:A:166:PRO:HD2	3:A:397:HOH:O	2.07	0.54
1:A:31:GLU:HG3	3:A:478:HOH:O	2.07	0.53
1:B:225:SER:CB	3:B:429:HOH:O	2.57	0.53
1:A:190:CYS:CB	3:A:411:HOH:O	2.57	0.53
1:A:112:VAL:HG11	1:A:182:THR:CG2	2.38	0.52
1:A:237:TYR:CE1	1:B:101:MET:HG2	2.44	0.52
1:B:155:ARG:HG3	3:B:389:HOH:O	2.09	0.52
1:B:183:ARG:NH2	1:B:185:GLU:OE1	2.37	0.51
1:B:216:ASP:OD1	3:B:330:HOH:O	2.19	0.51
1:B:228:LYS:HE2	1:B:235:VAL:HG13	1.92	0.51
1:B:125:THR:HG22	3:B:439:HOH:O	2.10	0.51
1:B:108:LEU:HD23	1:B:109:GLU:HG3	1.93	0.50
1:B:104:SER:CB	1:B:108:LEU:HD12	2.41	0.49
1:A:170:ARG:NE	3:A:410:HOH:O	2.46	0.49
1:B:228:LYS:NZ	3:B:453:HOH:O	2.34	0.49
1:A:85:LYS:NZ	3:A:450:HOH:O	2.42	0.48
1:A:190:CYS:HB2	3:A:411:HOH:O	2.13	0.48
1:B:167:SER:HA	1:B:170:ARG:HH21	1.79	0.48
1:A:24:GLU:OE2	1:A:36:ASP:OD2	2.32	0.48
1:B:127:THR:HG22	2:B:600:ARG:HB2	1.95	0.48
1:B:210:ILE:N	1:B:210:ILE:HD13	2.28	0.48
1:A:52:GLU:OE2	1:A:54:ARG:NH2	2.47	0.47
1:B:225:SER:HB3	3:B:429:HOH:O	2.15	0.47
1:A:108:LEU:HD22	3:A:405:HOH:O	2.15	0.47
1:A:132:TYR:O	1:A:136:GLN:HG2	2.14	0.47
1:A:174:LYS:HE2	1:A:231:GLN:OE1	2.15	0.47
1:A:62:ILE:CD1	1:A:87:ILE:HD12	2.38	0.47
1:B:104:SER:HB2	1:B:108:LEU:HD12	1.96	0.47
1:B:112:VAL:HG21	1:B:182:THR:CG2	2.44	0.47
1:B:205:GLU:HA	1:B:205:GLU:OE1	2.14	0.47
1:B:225:SER:HB2	3:B:429:HOH:O	2.14	0.47
1:B:214:ILE:N	3:B:292:HOH:O	2.47	0.46
1:B:12:TRP:CH2	1:B:72:ALA:HB2	2.51	0.46
1:A:208:GLN:NE2	1:A:208:GLN:O	2.49	0.46
1:B:155:ARG:HD3	1:B:156:TYR:CE1	2.50	0.46
1:A:199:VAL:HB	1:A:207:ILE:HD11	1.97	0.46
1:A:19:THR:CG2	1:A:124:GLN:HE22	2.27	0.45

Continued on next page...

Continued from previous page...

Atom-1	Atom-2	Interatomic distance (Å)	Clash overlap (Å)
1:A:52:GLU:CG	1:A:54:ARG:NH2	2.80	0.44
1:B:90:LEU:HD21	1:B:207:ILE:HG23	1.99	0.44
1:A:170:ARG:HD3	3:A:404:HOH:O	2.17	0.44
1:B:79:ILE:HB	1:B:193:LEU:HB2	2.00	0.44
1:B:47:LEU:CD2	1:B:209:THR:HG22	2.48	0.43
1:A:185:GLU:HB3	3:A:371:HOH:O	2.17	0.43
1:A:63:LEU:O	1:A:67:LYS:HG3	2.18	0.43
1:A:146:SER:OG	1:A:149:GLU:HG3	2.19	0.43
1:A:183:ARG:CG	1:A:183:ARG:HH11	1.95	0.43
1:A:109:GLU:HA	1:A:109:GLU:OE1	2.18	0.43
1:A:203:ARG:HA	1:A:203:ARG:HD3	1.86	0.42
1:A:11:ILE:HD12	3:A:313:HOH:O	2.18	0.42
1:A:241:GLN:OE1	1:B:177:PRO:HA	2.18	0.42
1:A:38:ASP:N	3:A:301:HOH:O	2.52	0.42
1:B:211:GLN:O	1:B:215:THR:HG23	2.19	0.42
1:B:206:GLU:HG3	3:B:444:HOH:O	2.18	0.42
1:B:167:SER:HA	1:B:170:ARG:HE	1.85	0.42
1:A:118:TYR:HB3	1:A:160:PRO:HG2	2.01	0.42
1:A:90:LEU:HD13	1:A:211:GLN:HG3	2.02	0.41
1:A:234:GLU:OE1	1:B:112:VAL:HG22	2.19	0.41
1:B:78:SER:HG	2:B:600:ARG:N	2.19	0.41
1:A:170:ARG:NH1	3:A:404:HOH:O	2.54	0.41
1:B:183:ARG:HD2	3:B:412:HOH:O	2.20	0.41
1:A:112:VAL:HG13	1:A:113:LEU:N	2.36	0.41
1:B:219:SER:HA	3:B:486:HOH:O	2.21	0.41
1:A:170:ARG:CZ	3:A:410:HOH:O	2.69	0.41
1:A:203:ARG:HG3	1:A:203:ARG:HH11	1.84	0.41
1:B:203:ARG:HG3	1:B:203:ARG:HH11	1.86	0.41
1:B:165:GLU:OE2	2:B:600:ARG:N	2.55	0.40
1:B:96:GLU:HG3	1:B:193:LEU:HD23	2.03	0.40
1:A:187:PRO:HG3	3:A:381:HOH:O	2.21	0.40

There are no symmetry-related clashes.

5.3 Torsion angles ⓘ

5.3.1 Protein backbone ⓘ

In the following table, the Percentiles column shows the percent Ramachandran outliers of the chain as a percentile score with respect to all X-ray entries followed by that with respect to entries of similar resolution.

The Analysed column shows the number of residues for which the backbone conformation was analysed, and the total number of residues.

Mol	Chain	Analysed	Favoured	Allowed	Outliers	Percentiles	
1	A	230/268 (86%)	224 (97%)	6 (3%)	0	100	100
1	B	233/268 (87%)	226 (97%)	6 (3%)	1 (0%)	34	30
All	All	463/536 (86%)	450 (97%)	12 (3%)	1 (0%)	47	44

All (1) Ramachandran outliers are listed below:

Mol	Chain	Res	Type
1	B	8	ARG

5.3.2 Protein sidechains ⓘ

In the following table, the Percentiles column shows the percent sidechain outliers of the chain as a percentile score with respect to all X-ray entries followed by that with respect to entries of similar resolution.

The Analysed column shows the number of residues for which the sidechain conformation was analysed, and the total number of residues.

Mol	Chain	Analysed	Rotameric	Outliers	Percentiles	
1	A	201/234 (86%)	182 (90%)	19 (10%)	8	5
1	B	204/234 (87%)	190 (93%)	14 (7%)	15	11
All	All	405/468 (86%)	372 (92%)	33 (8%)	11	7

All (33) residues with a non-rotameric sidechain are listed below:

Mol	Chain	Res	Type
1	A	19	THR
1	A	22	PRO
1	A	24	GLU
1	A	29	GLN
1	A	59	ASP
1	A	87	ILE
1	A	109	GLU
1	A	125	THR
1	A	135	SER
1	A	155	ARG
1	A	174	LYS
1	A	183	ARG

Continued on next page...

Continued from previous page...

Mol	Chain	Res	Type
1	A	185	GLU
1	A	187	PRO
1	A	215	THR
1	A	228	LYS
1	A	233	SER
1	A	238	GLU
1	A	241	GLN
1	B	8	ARG
1	B	10	ARG
1	B	24	GLU
1	B	29	GLN
1	B	45	GLU
1	B	85	LYS
1	B	108	LEU
1	B	109	GLU
1	B	110	THR
1	B	182	THR
1	B	183	ARG
1	B	225	SER
1	B	228	LYS
1	B	241	GLN

Some sidechains can be flipped to improve hydrogen bonding and reduce clashes. All (10) such sidechains are listed below:

Mol	Chain	Res	Type
1	A	17	ASN
1	A	64	ASN
1	A	124	GLN
1	A	131	HIS
1	A	211	GLN
1	B	17	ASN
1	B	29	GLN
1	B	131	HIS
1	B	212	GLN
1	B	231	GLN

5.3.3 RNA ⓘ

There are no RNA molecules in this entry.

5.4 Non-standard residues in protein, DNA, RNA chains ⓘ

There are no non-standard protein/DNA/RNA residues in this entry.

5.5 Carbohydrates ⓘ

There are no monosaccharides in this entry.

5.6 Ligand geometry ⓘ

2 ligands are modelled in this entry.

In the following table, the Counts columns list the number of bonds (or angles) for which Mogul statistics could be retrieved, the number of bonds (or angles) that are observed in the model and the number of bonds (or angles) that are defined in the Chemical Component Dictionary. The Link column lists molecule types, if any, to which the group is linked. The Z score for a bond length (or angle) is the number of standard deviations the observed value is removed from the expected value. A bond length (or angle) with $|Z| > 2$ is considered an outlier worth inspection. RMSZ is the root-mean-square of all Z scores of the bond lengths (or angles).

Mol	Type	Chain	Res	Link	Bond lengths			Bond angles		
					Counts	RMSZ	$\# Z > 2$	Counts	RMSZ	$\# Z > 2$
2	ARG	B	600	-	7,11,11	0.85	0	6,13,13	0.66	0
2	ARG	A	600	-	7,11,11	1.16	1 (14%)	6,13,13	0.46	0

In the following table, the Chirals column lists the number of chiral outliers, the number of chiral centers analysed, the number of these observed in the model and the number defined in the Chemical Component Dictionary. Similar counts are reported in the Torsion and Rings columns. '-' means no outliers of that kind were identified.

Mol	Type	Chain	Res	Link	Chirals	Torsions	Rings
2	ARG	B	600	-	-	0/7/11/11	-
2	ARG	A	600	-	-	0/7/11/11	-

All (1) bond length outliers are listed below:

Mol	Chain	Res	Type	Atoms	Z	Observed(Å)	Ideal(Å)
2	A	600	ARG	CG-CD	2.15	1.60	1.51

There are no bond angle outliers.

There are no chirality outliers.

There are no torsion outliers.

There are no ring outliers.

2 monomers are involved in 6 short contacts:

Mol	Chain	Res	Type	Clashes	Symm-Clashes
2	B	600	ARG	4	0
2	A	600	ARG	2	0

5.7 Other polymers [i](#)

There are no such residues in this entry.

5.8 Polymer linkage issues [i](#)

There are no chain breaks in this entry.

6 Fit of model and data [i](#)

6.1 Protein, DNA and RNA chains [i](#)

In the following table, the column labelled ‘#RSRZ> 2’ contains the number (and percentage) of RSRZ outliers, followed by percent RSRZ outliers for the chain as percentile scores relative to all X-ray entries and entries of similar resolution. The OWAB column contains the minimum, median, 95th percentile and maximum values of the occupancy-weighted average B-factor per residue. The column labelled ‘Q< 0.9’ lists the number of (and percentage) of residues with an average occupancy less than 0.9.

Mol	Chain	Analysed	<RSRZ>	#RSRZ>2		OWAB(Å ²)	Q<0.9
1	A	232/268 (86%)	-0.77	0	100 100	4, 12, 27, 37	4 (1%)
1	B	235/268 (87%)	-0.74	1 (0%)	92 92	4, 12, 28, 53	4 (1%)
All	All	467/536 (87%)	-0.75	1 (0%)	95 94	4, 12, 28, 53	8 (1%)

All (1) RSRZ outliers are listed below:

Mol	Chain	Res	Type	RSRZ
1	B	7	ASP	4.2

6.2 Non-standard residues in protein, DNA, RNA chains [i](#)

There are no non-standard protein/DNA/RNA residues in this entry.

6.3 Carbohydrates [i](#)

There are no monosaccharides in this entry.

6.4 Ligands [i](#)

In the following table, the Atoms column lists the number of modelled atoms in the group and the number defined in the chemical component dictionary. The B-factors column lists the minimum, median, 95th percentile and maximum values of B factors of atoms in the group. The column labelled ‘Q< 0.9’ lists the number of atoms with occupancy less than 0.9.

Mol	Type	Chain	Res	Atoms	RSCC	RSR	B-factors(Å ²)	Q<0.9
2	ARG	A	600	12/12	0.97	0.08	2,5,7,9	0
2	ARG	B	600	12/12	0.98	0.06	2,3,6,7	0

6.5 Other polymers [i](#)

There are no such residues in this entry.