



Full wwPDB X-ray Structure Validation Report ⓘ

May 22, 2020 – 04:21 pm BST

PDB ID : 3QE4
Title : An evolved aminoacyl-tRNA Synthetase with atypical polysubstrate specificity
Authors : Young, D.D.; Young, T.S.; Jahnz, M.; Ahmad, I.; Spraggon, G.; Schultz, P.G.
Deposited on : 2011-01-19
Resolution : 2.30 Å(reported)

This is a Full wwPDB X-ray Structure Validation Report for a publicly released PDB entry.

We welcome your comments at validation@mail.wwpdb.org

A user guide is available at

<https://www.wwpdb.org/validation/2017/XrayValidationReportHelp>

with specific help available everywhere you see the ⓘ symbol.

The following versions of software and data (see [references ⓘ](#)) were used in the production of this report:

MolProbity : 4.02b-467
Mogul : 1.8.5 (274361), CSD as541be (2020)
Xtriage (Phenix) : 1.13
EDS : 2.11
Percentile statistics : 20191225.v01 (using entries in the PDB archive December 25th 2019)
Refmac : 5.8.0158
CCP4 : 7.0.044 (Gargrove)
Ideal geometry (proteins) : Engh & Huber (2001)
Ideal geometry (DNA, RNA) : Parkinson et al. (1996)
Validation Pipeline (wwPDB-VP) : 2.11

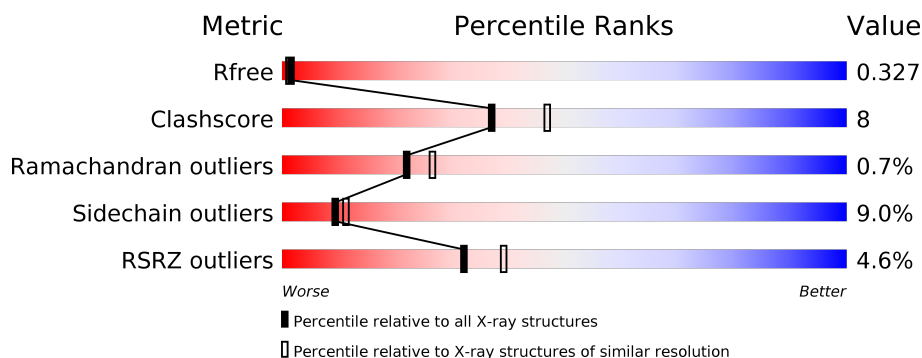
1 Overall quality at a glance

The following experimental techniques were used to determine the structure:

X-RAY DIFFRACTION

The reported resolution of this entry is 2.30 Å.

Percentile scores (ranging between 0-100) for global validation metrics of the entry are shown in the following graphic. The table shows the number of entries on which the scores are based.



Metric	Whole archive (#Entries)	Similar resolution (#Entries, resolution range(Å))
R_{free}	130704	5042 (2.30-2.30)
Clashscore	141614	5643 (2.30-2.30)
Ramachandran outliers	138981	5575 (2.30-2.30)
Sidechain outliers	138945	5575 (2.30-2.30)
RSRZ outliers	127900	4938 (2.30-2.30)

The table below summarises the geometric issues observed across the polymeric chains and their fit to the electron density. The red, orange, yellow and green segments on the lower bar indicate the fraction of residues that contain outliers for ≥ 3 , 2, 1 and 0 types of geometric quality criteria respectively. A grey segment represents the fraction of residues that are not modelled. The numeric value for each fraction is indicated below the corresponding segment, with a dot representing fractions $\leq 5\%$. The upper red bar (where present) indicates the fraction of residues that have poor fit to the electron density. The numeric value is given above the bar.

Mol	Chain	Length	Quality of chain
1	A	312	<div> <div>4%</div> <div> <div></div> <div>75%</div> <div>19%</div> <div>• •</div> </div> </div>
1	B	312	<div> <div>5%</div> <div> <div></div> <div>76%</div> <div>20%</div> <div>• •</div> </div> </div>

2 Entry composition [i](#)

There are 3 unique types of molecules in this entry. The entry contains 5114 atoms, of which 0 are hydrogens and 0 are deuteriums.

In the tables below, the ZeroOcc column contains the number of atoms modelled with zero occupancy, the AltConf column contains the number of residues with at least one atom in alternate conformation and the Trace column contains the number of residues modelled with at most 2 atoms.

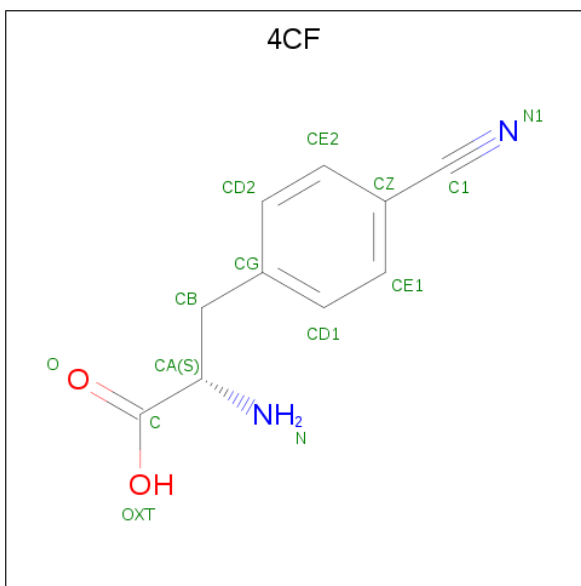
- Molecule 1 is a protein called Tyrosyl-tRNA synthetase.

Mol	Chain	Residues	Atoms					ZeroOcc	AltConf	Trace
1	A	307	Total	C	N	O	S	0	1	0
			2459	1575	415	455	14			
1	B	306	Total	C	N	O	S	0	1	0
			2454	1572	414	455	13			

There are 24 discrepancies between the modelled and reference sequences:

Chain	Residue	Modelled	Actual	Comment	Reference
A	32	LEU	TYR	ENGINEERED MUTATION	UNP Q57834
A	65	VAL	LEU	ENGINEERED MUTATION	UNP Q57834
A	108	TRP	PHE	ENGINEERED MUTATION	UNP Q57834
A	109	MET	GLN	ENGINEERED MUTATION	UNP Q57834
A	158	GLY	ASP	ENGINEERED MUTATION	UNP Q57834
A	159	ALA	ILE	ENGINEERED MUTATION	UNP Q57834
A	307	LEU	-	EXPRESSION TAG	UNP Q57834
A	308	ILE	-	EXPRESSION TAG	UNP Q57834
A	309	ARG	-	EXPRESSION TAG	UNP Q57834
A	310	LYS	-	EXPRESSION TAG	UNP Q57834
A	311	ARG	-	EXPRESSION TAG	UNP Q57834
A	312	LEU	-	EXPRESSION TAG	UNP Q57834
B	32	LEU	TYR	ENGINEERED MUTATION	UNP Q57834
B	65	VAL	LEU	ENGINEERED MUTATION	UNP Q57834
B	108	TRP	PHE	ENGINEERED MUTATION	UNP Q57834
B	109	MET	GLN	ENGINEERED MUTATION	UNP Q57834
B	158	GLY	ASP	ENGINEERED MUTATION	UNP Q57834
B	159	ALA	ILE	ENGINEERED MUTATION	UNP Q57834
B	307	LEU	-	EXPRESSION TAG	UNP Q57834
B	308	ILE	-	EXPRESSION TAG	UNP Q57834
B	309	ARG	-	EXPRESSION TAG	UNP Q57834
B	310	LYS	-	EXPRESSION TAG	UNP Q57834
B	311	ARG	-	EXPRESSION TAG	UNP Q57834
B	312	LEU	-	EXPRESSION TAG	UNP Q57834

- Molecule 2 is 4-cyano-L-phenylalanine (three-letter code: 4CF) (formula: $C_{10}H_{10}N_2O_2$).



Mol	Chain	Residues	Atoms				ZeroOcc	AltConf
2	A	1	Total	C	N	O	0	0
			14	10	2	2		
2	B	1	Total	C	N	O	0	0
			14	10	2	2		

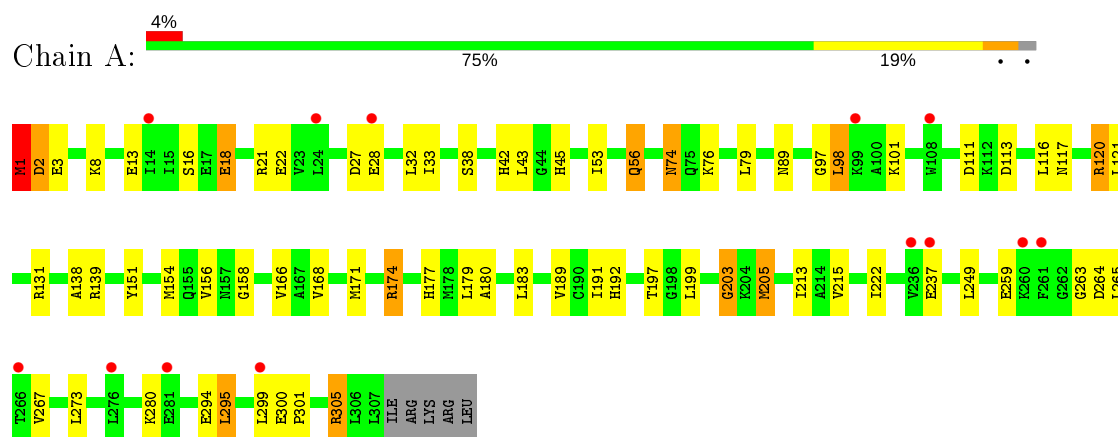
- Molecule 3 is water.

Mol	Chain	Residues	Atoms		ZeroOcc	AltConf
3	A	86	Total	O	0	0
			86	86		
3	B	87	Total	O	0	0
			87	87		

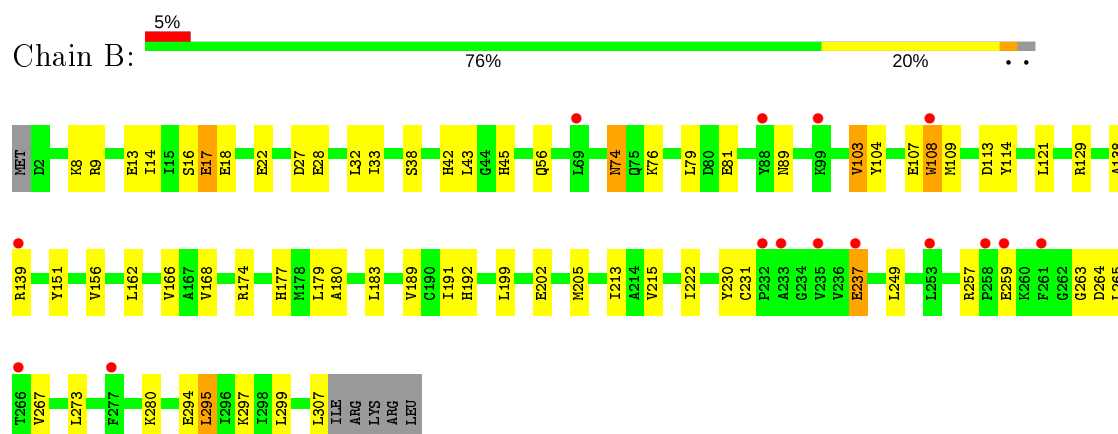
3 Residue-property plots [i](#)

These plots are drawn for all protein, RNA and DNA chains in the entry. The first graphic for a chain summarises the proportions of the various outlier classes displayed in the second graphic. The second graphic shows the sequence view annotated by issues in geometry and electron density. Residues are color-coded according to the number of geometric quality criteria for which they contain at least one outlier: green = 0, yellow = 1, orange = 2 and red = 3 or more. A red dot above a residue indicates a poor fit to the electron density ($RSRZ > 2$). Stretches of 2 or more consecutive residues without any outlier are shown as a green connector. Residues present in the sample, but not in the model, are shown in grey.

- Molecule 1: Tyrosyl-tRNA synthetase



- Molecule 1: Tyrosyl-tRNA synthetase



4 Data and refinement statistics

Property	Value	Source
Space group	P 1 21 1	Depositor
Cell constants a, b, c, α , β , γ	52.52Å 68.94Å 82.09Å 90.00° 90.60° 90.00°	Depositor
Resolution (Å)	44.45 – 2.30 44.45 – 2.30	Depositor EDS
% Data completeness (in resolution range)	96.0 (44.45-2.30) 96.0 (44.45-2.30)	Depositor EDS
R_{merge}	0.07	Depositor
R_{sym}	0.07	Depositor
$\langle I/\sigma(I) \rangle$ ¹	2.53 (at 2.29Å)	Xtriage
Refinement program	BUSTER 2.9.3	Depositor
R, R_{free}	0.233 , 0.309 0.249 , 0.327	Depositor DCC
R_{free} test set	1282 reflections (5.09%)	wwPDB-VP
Wilson B-factor (Å ²)	31.6	Xtriage
Anisotropy	0.619	Xtriage
Bulk solvent k_{sol} (e/Å ³), B_{sol} (Å ²)	0.32 , 63.4	EDS
L-test for twinning ²	$\langle L \rangle = 0.51$, $\langle L^2 \rangle = 0.35$	Xtriage
Estimated twinning fraction	0.017 for h,-k,-l	Xtriage
F_o, F_c correlation	0.93	EDS
Total number of atoms	5114	wwPDB-VP
Average B, all atoms (Å ²)	46.0	wwPDB-VP

Xtriage's analysis on translational NCS is as follows: *The analyses of the Patterson function reveals a significant off-origin peak that is 39.58 % of the origin peak, indicating pseudo-translational symmetry. The chance of finding a peak of this or larger height randomly in a structure without pseudo-translational symmetry is equal to 3.1070e-04. The detected translational NCS is most likely also responsible for the elevated intensity ratio.*

¹ Intensities estimated from amplitudes.

² Theoretical values of $\langle |L| \rangle$, $\langle L^2 \rangle$ for acentric reflections are 0.5, 0.333 respectively for untwinned datasets, and 0.375, 0.2 for perfectly twinned datasets.

5 Model quality [i](#)

5.1 Standard geometry [i](#)

Bond lengths and bond angles in the following residue types are not validated in this section: 4CF

The Z score for a bond length (or angle) is the number of standard deviations the observed value is removed from the expected value. A bond length (or angle) with $|Z| > 5$ is considered an outlier worth inspection. RMSZ is the root-mean-square of all Z scores of the bond lengths (or angles).

Mol	Chain	Bond lengths		Bond angles	
		RMSZ	$\# Z > 5$	RMSZ	$\# Z > 5$
1	A	0.54	0/2500	0.76	1/3357 (0.0%)
1	B	0.56	0/2498	0.75	0/3355
All	All	0.55	0/4998	0.76	1/6712 (0.0%)

There are no bond length outliers.

All (1) bond angle outliers are listed below:

Mol	Chain	Res	Type	Atoms	Z	Observed(°)	Ideal(°)
1	A	1	MET	C-N-CA	6.44	137.80	121.70

There are no chirality outliers.

There are no planarity outliers.

5.2 Too-close contacts [i](#)

In the following table, the Non-H and H(model) columns list the number of non-hydrogen atoms and hydrogen atoms in the chain respectively. The H(added) column lists the number of hydrogen atoms added and optimized by MolProbity. The Clashes column lists the number of clashes within the asymmetric unit, whereas Symm-Clashes lists symmetry related clashes.

Mol	Chain	Non-H	H(model)	H(added)	Clashes	Symm-Clashes
1	A	2459	0	2543	48	0
1	B	2454	0	2536	34	0
2	A	14	0	9	1	0
2	B	14	0	9	0	0
3	A	86	0	0	0	0
3	B	87	0	0	1	0
All	All	5114	0	5097	78	0

The all-atom clashscore is defined as the number of clashes found per 1000 atoms (including hydrogen atoms). The all-atom clashscore for this structure is 8.

All (78) close contacts within the same asymmetric unit are listed below, sorted by their clash magnitude.

Atom-1	Atom-2	Interatomic distance (Å)	Clash overlap (Å)
1:A:42:HIS:H	1:A:45:HIS:HD2	1.24	0.83
1:B:42:HIS:H	1:B:45:HIS:HD2	1.25	0.83
1:A:301:PRO:O	1:A:305:ARG:HD2	1.80	0.82
1:B:38:SER:H	1:B:89:ASN:HD21	1.33	0.76
1:A:38:SER:H	1:A:89:ASN:HD21	1.34	0.76
1:A:158:GLY:HA3	2:A:313:4CF:N1	2.06	0.70
1:A:205:MET:HE3	1:A:213:ILE:H	1.59	0.67
1:B:74:ASN:HD21	1:B:138:ALA:HA	1.60	0.66
1:A:74:ASN:HD21	1:A:138:ALA:HA	1.61	0.65
1:A:300:GLU:HG2	1:A:301:PRO:HD3	1.79	0.65
1:A:53:ILE:HG12	1:A:98:LEU:HB2	1.78	0.65
1:B:199:LEU:HD11	1:B:213:ILE:HG13	1.78	0.65
1:A:97:GLY:HA2	1:B:230:TYR:OH	1.97	0.64
1:A:13:GLU:OE2	1:A:174:ARG:HD2	1.99	0.62
1:A:199:LEU:HD11	1:A:213:ILE:HG13	1.81	0.62
1:B:17:GLU:CD	1:B:17:GLU:H	2.02	0.62
1:B:13:GLU:OE2	1:B:174:ARG:HD2	2.00	0.60
1:B:42:HIS:H	1:B:45:HIS:CD2	2.14	0.59
1:A:42:HIS:H	1:A:45:HIS:CD2	2.14	0.59
1:B:17:GLU:HB3	3:B:360:HOH:O	2.02	0.59
1:A:1:MET:HB2	1:A:2:ASP:CB	2.33	0.58
1:A:116:LEU:O	1:A:120:ARG:HD3	2.03	0.58
1:B:259:GLU:HA	1:B:263:GLY:HA2	1.86	0.58
1:B:177:HIS:ND1	1:B:192:HIS:HE1	2.03	0.57
1:B:108:TRP:CZ2	1:B:162:LEU:HD21	2.40	0.57
1:A:177:HIS:ND1	1:A:192:HIS:HE1	2.03	0.56
1:A:1:MET:HB2	1:A:2:ASP:HB2	1.86	0.56
1:A:215:VAL:O	1:A:299:LEU:HD13	2.06	0.56
1:A:305:ARG:HH21	1:B:231:CYS:H	1.54	0.56
1:A:249:LEU:HD22	1:A:294:GLU:HB3	1.89	0.55
1:A:205:MET:CE	1:A:213:ILE:H	2.20	0.54
1:B:215:VAL:O	1:B:299:LEU:HD13	2.08	0.54
1:B:249:LEU:HD22	1:B:294:GLU:HB3	1.90	0.54
1:B:8:LYS:HA	1:B:14:ILE:HD11	1.89	0.54
1:A:43:LEU:HD11	1:A:295:LEU:HD11	1.89	0.53
1:A:1:MET:HB2	1:A:3:GLU:H	1.74	0.53
1:B:43:LEU:HD11	1:B:295:LEU:HD11	1.89	0.53

Continued on next page...

Continued from previous page...

Atom-1	Atom-2	Interatomic distance (Å)	Clash overlap (Å)
1:A:97:GLY:O	1:B:237:GLU:OE2	2.27	0.52
1:A:33:ILE:HG13	1:A:168:VAL:O	2.09	0.52
1:B:33:ILE:HG13	1:B:168:VAL:O	2.10	0.51
1:B:76:LYS:HZ2	1:B:139:ARG:HD3	1.77	0.50
1:A:166:VAL:HG22	1:A:189:VAL:HB	1.93	0.50
1:A:197:THR:HA	1:A:203:GLY:O	2.12	0.50
1:A:222:ILE:HD11	1:A:299:LEU:HD11	1.94	0.49
1:B:156:VAL:HG13	1:B:180:ALA:HA	1.94	0.49
1:B:222:ILE:HD11	1:B:299:LEU:HD11	1.94	0.49
1:A:76:LYS:HZ2	1:A:139:ARG:HD3	1.77	0.49
1:A:1:MET:HG3	1:A:3:GLU:HB2	1.95	0.48
1:B:121:LEU:HD22	1:B:183:LEU:HB3	1.96	0.48
1:A:156:VAL:HG13	1:A:180:ALA:HA	1.97	0.47
1:B:109:MET:HG2	1:B:114:TYR:CZ	2.48	0.47
1:A:259:GLU:HA	1:A:263:GLY:HA2	1.96	0.47
1:B:166:VAL:HG22	1:B:189:VAL:HB	1.96	0.47
1:B:168:VAL:HG22	1:B:191:ILE:HB	1.97	0.46
1:A:267:VAL:HG11	1:A:273:LEU:HB2	1.98	0.46
1:B:267:VAL:HG11	1:B:273:LEU:HB2	1.98	0.46
1:A:121:LEU:HD22	1:A:183:LEU:HB3	1.98	0.45
1:A:168:VAL:HG22	1:A:191:ILE:HB	1.98	0.45
1:B:76:LYS:HA	1:B:139:ARG:HH12	1.83	0.44
1:A:33:ILE:HD12	1:A:168:VAL:HG12	1.99	0.44
1:A:117:ASN:HA	1:A:120:ARG:HE	1.83	0.44
1:A:76:LYS:HA	1:A:139:ARG:HH12	1.83	0.44
1:A:18:GLU:HA	1:A:21:ARG:HD2	1.99	0.44
1:B:104:TYR:HB2	1:B:107:GLU:HB2	2.00	0.44
1:A:16:SER:OG	1:A:18:GLU:HG2	2.18	0.44
1:A:1:MET:CB	1:A:2:ASP:HB2	2.49	0.43
1:B:33:ILE:HD12	1:B:168:VAL:HG12	2.00	0.43
1:A:171:MET:O	1:A:174:ARG:HB2	2.19	0.43
1:B:103:VAL:HG11	1:B:108:TRP:CZ2	2.54	0.43
1:A:56:GLN:HE22	1:B:237:GLU:HG3	1.84	0.42
1:B:32:LEU:HD12	1:B:32:LEU:C	2.39	0.42
1:A:18:GLU:HA	1:A:21:ARG:HH11	1.85	0.42
1:A:8:LYS:O	1:A:8:LYS:HG2	2.20	0.41
1:A:32:LEU:HD12	1:A:32:LEU:C	2.39	0.41
1:A:205:MET:HE3	1:A:213:ILE:N	2.31	0.41
1:B:179:LEU:HD22	1:B:183:LEU:HD11	2.01	0.41
1:A:179:LEU:HD22	1:A:183:LEU:HD11	2.02	0.40
1:A:1:MET:HB2	1:A:2:ASP:CA	2.50	0.40

There are no symmetry-related clashes.

5.3 Torsion angles [i](#)

5.3.1 Protein backbone [i](#)

In the following table, the Percentiles column shows the percent Ramachandran outliers of the chain as a percentile score with respect to all X-ray entries followed by that with respect to entries of similar resolution.

The Analysed column shows the number of residues for which the backbone conformation was analysed, and the total number of residues.

Mol	Chain	Analysed	Favoured	Allowed	Outliers	Percentiles	
1	A	305/312 (98%)	292 (96%)	10 (3%)	3 (1%)	15	17
1	B	305/312 (98%)	296 (97%)	8 (3%)	1 (0%)	41	50
All	All	610/624 (98%)	588 (96%)	18 (3%)	4 (1%)	22	26

All (4) Ramachandran outliers are listed below:

Mol	Chain	Res	Type
1	A	203	GLY
1	A	280	LYS
1	B	280	LYS
1	A	2	ASP

5.3.2 Protein sidechains [i](#)

In the following table, the Percentiles column shows the percent sidechain outliers of the chain as a percentile score with respect to all X-ray entries followed by that with respect to entries of similar resolution.

The Analysed column shows the number of residues for which the sidechain conformation was analysed, and the total number of residues.

Mol	Chain	Analysed	Rotameric	Outliers	Percentiles	
1	A	267/272 (98%)	244 (91%)	23 (9%)	10	12
1	B	267/272 (98%)	242 (91%)	25 (9%)	8	10
All	All	534/544 (98%)	486 (91%)	48 (9%)	9	11

All (48) residues with a non-rotameric sidechain are listed below:

Mol	Chain	Res	Type
1	A	1	MET
1	A	18	GLU
1	A	22	GLU
1	A	27	ASP
1	A	28	GLU
1	A	56	GLN
1	A	74	ASN
1	A	79	LEU
1	A	98	LEU
1	A	101	LYS
1	A	111	ASP
1	A	113	ASP
1	A	120	ARG
1	A	131	ARG
1	A	151	TYR
1	A	154	MET
1	A	174	ARG
1	A	205	MET
1	A	237	GLU
1	A	264	ASP
1	A	265	LEU
1	A	295	LEU
1	A	305	ARG
1	B	9	ARG
1	B	16	SER
1	B	17	GLU
1	B	18	GLU
1	B	22	GLU
1	B	27	ASP
1	B	28	GLU
1	B	56	GLN
1	B	74	ASN
1	B	79	LEU
1	B	81	GLU
1	B	103	VAL
1	B	108	TRP
1	B	113	ASP
1	B	129	ARG
1	B	151	TYR
1	B	202	GLU
1	B	205	MET
1	B	237	GLU
1	B	257	ARG

Continued on next page...

Continued from previous page...

Mol	Chain	Res	Type
1	B	264	ASP
1	B	265	LEU
1	B	295	LEU
1	B	297	LYS
1	B	307	LEU

Some sidechains can be flipped to improve hydrogen bonding and reduce clashes. All (10) such sidechains are listed below:

Mol	Chain	Res	Type
1	A	45	HIS
1	A	70	HIS
1	A	74	ASN
1	A	89	ASN
1	A	192	HIS
1	B	45	HIS
1	B	70	HIS
1	B	74	ASN
1	B	89	ASN
1	B	192	HIS

5.3.3 RNA [i](#)

There are no RNA molecules in this entry.

5.4 Non-standard residues in protein, DNA, RNA chains [i](#)

There are no non-standard protein/DNA/RNA residues in this entry.

5.5 Carbohydrates [i](#)

There are no carbohydrates in this entry.

5.6 Ligand geometry [i](#)

2 ligands are modelled in this entry.

In the following table, the Counts columns list the number of bonds (or angles) for which Mogul statistics could be retrieved, the number of bonds (or angles) that are observed in the model and the number of bonds (or angles) that are defined in the Chemical Component Dictionary. The

Link column lists molecule types, if any, to which the group is linked. The Z score for a bond length (or angle) is the number of standard deviations the observed value is removed from the expected value. A bond length (or angle) with $|Z| > 2$ is considered an outlier worth inspection. RMSZ is the root-mean-square of all Z scores of the bond lengths (or angles).

Mol	Type	Chain	Res	Link	Bond lengths			Bond angles		
					Counts	RMSZ	# Z > 2	Counts	RMSZ	# Z > 2
2	4CF	B	313	-	11,14,14	3.47	6 (54%)	13,18,18	1.13	1 (7%)
2	4CF	A	313	-	11,14,14	3.49	5 (45%)	13,18,18	1.02	0

In the following table, the Chirals column lists the number of chiral outliers, the number of chiral centers analysed, the number of these observed in the model and the number defined in the Chemical Component Dictionary. Similar counts are reported in the Torsion and Rings columns. '-' means no outliers of that kind were identified.

Mol	Type	Chain	Res	Link	Chirals	Torsions	Rings
2	4CF	B	313	-	-	2/6/10/10	0/1/1/1
2	4CF	A	313	-	-	4/6/10/10	0/1/1/1

All (11) bond length outliers are listed below:

Mol	Chain	Res	Type	Atoms	Z	Observed(Å)	Ideal(Å)
2	B	313	4CF	CE2-CZ	6.60	1.53	1.39
2	A	313	4CF	CD1-CG	6.51	1.52	1.38
2	B	313	4CF	CD1-CG	5.98	1.51	1.38
2	A	313	4CF	CE2-CZ	5.81	1.51	1.39
2	A	313	4CF	CE1-CD1	5.16	1.48	1.38
2	B	313	4CF	CE2-CD2	4.25	1.46	1.38
2	B	313	4CF	CE1-CD1	4.16	1.46	1.38
2	A	313	4CF	CE2-CD2	4.14	1.46	1.38
2	A	313	4CF	CZ-C1	3.44	1.52	1.44
2	B	313	4CF	CZ-C1	3.19	1.51	1.44
2	B	313	4CF	CA-N	2.07	1.51	1.47

All (1) bond angle outliers are listed below:

Mol	Chain	Res	Type	Atoms	Z	Observed(°)	Ideal(°)
2	B	313	4CF	CG-CB-CA	2.55	119.52	114.22

There are no chirality outliers.

All (6) torsion outliers are listed below:

Mol	Chain	Res	Type	Atoms
2	A	313	4CF	C-CA-CB-CG
2	A	313	4CF	N-CA-CB-CG
2	B	313	4CF	CA-CB-CG-CD2
2	A	313	4CF	CA-CB-CG-CD2
2	A	313	4CF	CA-CB-CG-CD1
2	B	313	4CF	CA-CB-CG-CD1

There are no ring outliers.

1 monomer is involved in 1 short contact:

Mol	Chain	Res	Type	Clashes	Symm-Clashes
2	A	313	4CF	1	0

5.7 Other polymers [i](#)

There are no such residues in this entry.

5.8 Polymer linkage issues [i](#)

There are no chain breaks in this entry.

6 Fit of model and data

6.1 Protein, DNA and RNA chains

In the following table, the column labelled ‘#RSRZ> 2’ contains the number (and percentage) of RSRZ outliers, followed by percent RSRZ outliers for the chain as percentile scores relative to all X-ray entries and entries of similar resolution. The OWAB column contains the minimum, median, 95th percentile and maximum values of the occupancy-weighted average B-factor per residue. The column labelled ‘Q< 0.9’ lists the number of (and percentage) of residues with an average occupancy less than 0.9.

Mol	Chain	Analysed	<RSRZ>	#RSRZ>2	OWAB(Å ²)	Q<0.9
1	A	307/312 (98%)	0.39	13 (4%) 36 43	21, 43, 79, 113	0
1	B	306/312 (98%)	0.31	15 (4%) 29 36	22, 41, 74, 110	0
All	All	613/624 (98%)	0.35	28 (4%) 32 39	21, 43, 78, 113	0

All (28) RSRZ outliers are listed below:

Mol	Chain	Res	Type	RSRZ
1	B	235	VAL	7.0
1	B	108	TRP	5.5
1	A	108	TRP	5.1
1	B	259	GLU	4.3
1	B	261	PHE	4.0
1	A	266	THR	3.9
1	B	99	LYS	3.6
1	A	261	PHE	3.5
1	B	253	LEU	3.4
1	B	233	ALA	3.3
1	A	236	VAL	3.2
1	B	258	PRO	3.2
1	A	24	LEU	3.2
1	B	232	PRO	3.1
1	B	69	LEU	2.7
1	A	14	ILE	2.5
1	B	266	THR	2.4
1	B	88	TYR	2.3
1	A	28	GLU	2.3
1	B	237	GLU	2.3
1	B	139	ARG	2.2
1	A	260	LYS	2.2
1	A	276	LEU	2.2
1	A	237	GLU	2.2

Continued on next page...

Continued from previous page...

Mol	Chain	Res	Type	RSRZ
1	A	281	GLU	2.1
1	A	299	LEU	2.1
1	B	277	PHE	2.1
1	A	99	LYS	2.0

6.2 Non-standard residues in protein, DNA, RNA chains [i](#)

There are no non-standard protein/DNA/RNA residues in this entry.

6.3 Carbohydrates [i](#)

There are no carbohydrates in this entry.

6.4 Ligands [i](#)

In the following table, the Atoms column lists the number of modelled atoms in the group and the number defined in the chemical component dictionary. The B-factors column lists the minimum, median, 95th percentile and maximum values of B factors of atoms in the group. The column labelled 'Q< 0.9' lists the number of atoms with occupancy less than 0.9.

Mol	Type	Chain	Res	Atoms	RSCC	RSR	B-factors(\AA^2)	Q<0.9
2	4CF	B	313	14/14	0.90	0.15	14,30,50,55	0
2	4CF	A	313	14/14	0.90	0.17	6,34,142,149	0

6.5 Other polymers [i](#)

There are no such residues in this entry.