



Full wwPDB X-ray Structure Validation Report ⓘ

Aug 7, 2020 – 11:03 AM BST

PDB ID : 3QEL
Title : Crystal structure of amino terminal domains of the NMDA receptor subunit GluN1 and GluN2B in complex with ifenprodil
Authors : Karakas, E.; Simorowski, N.; Furukawa, H.
Deposited on : 2011-01-20
Resolution : 2.60 Å(reported)

This is a Full wwPDB X-ray Structure Validation Report for a publicly released PDB entry.

We welcome your comments at validation@mail.wwpdb.org

A user guide is available at

<https://www.wwpdb.org/validation/2017/XrayValidationReportHelp>

with specific help available everywhere you see the ⓘ symbol.

The following versions of software and data (see [references ⓘ](#)) were used in the production of this report:

MolProbity : 4.02b-467
Mogul : 1.8.5 (274361), CSD as541be (2020)
Xtriage (Phenix) : 1.13
EDS : 2.13.1
buster-report : 1.1.7 (2018)
Percentile statistics : 20191225.v01 (using entries in the PDB archive December 25th 2019)
Refmac : 5.8.0158
CCP4 : 7.0.044 (Gargrove)
Ideal geometry (proteins) : Engh & Huber (2001)
Ideal geometry (DNA, RNA) : Parkinson et al. (1996)
Validation Pipeline (wwPDB-VP) : 2.13.1

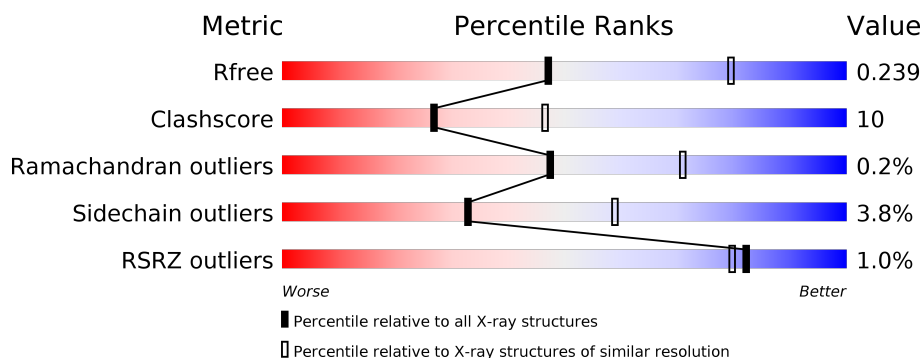
1 Overall quality at a glance

The following experimental techniques were used to determine the structure:

X-RAY DIFFRACTION

The reported resolution of this entry is 2.60 Å.

Percentile scores (ranging between 0-100) for global validation metrics of the entry are shown in the following graphic. The table shows the number of entries on which the scores are based.



Metric	Whole archive (#Entries)	Similar resolution (#Entries, resolution range(Å))
R_{free}	130704	3163 (2.60-2.60)
Clashscore	141614	3518 (2.60-2.60)
Ramachandran outliers	138981	3455 (2.60-2.60)
Sidechain outliers	138945	3455 (2.60-2.60)
RSRZ outliers	127900	3104 (2.60-2.60)

The table below summarises the geometric issues observed across the polymeric chains and their fit to the electron density. The red, orange, yellow and green segments on the lower bar indicate the fraction of residues that contain outliers for ≥ 3 , 2, 1 and 0 types of geometric quality criteria respectively. A grey segment represents the fraction of residues that are not modelled. The numeric value for each fraction is indicated below the corresponding segment, with a dot representing fractions $\leq 5\%$. The upper red bar (where present) indicates the fraction of residues that have poor fit to the electron density. The numeric value is given above the bar.

Mol	Chain	Length	Quality of chain
1	A	383	
1	C	383	
2	B	364	
2	D	364	
3	E	6	

The following table lists non-polymeric compounds, carbohydrate monomers and non-standard residues in protein, DNA, RNA chains that are outliers for geometric or electron-density-fit criteria:

Mol	Type	Chain	Res	Chirality	Geometry	Clashes	Electron density
3	FUC	E	6	X	-	-	-
5	NAG	B	501	X	-	-	-
5	NAG	B	502	X	-	-	-
5	NAG	C	502	X	-	-	-
5	NAG	D	501	X	-	-	-
5	NAG	D	502	X	-	-	-
6	QEL	B	1	X	-	-	-
6	QEL	D	2	X	-	-	-

2 Entry composition

There are 7 unique types of molecules in this entry. The entry contains 10737 atoms, of which 0 are hydrogens and 0 are deuteriums.

In the tables below, the ZeroOcc column contains the number of atoms modelled with zero occupancy, the AltConf column contains the number of residues with at least one atom in alternate conformation and the Trace column contains the number of residues modelled with at most 2 atoms.

- Molecule 1 is a protein called NMDA glutamate receptor subunit.

Mol	Chain	Residues	Atoms					ZeroOcc	AltConf	Trace
1	A	355	Total	C	N	O	S	0	0	0
			2665	1702	460	493	10			
1	C	351	Total	C	N	O	S	0	0	0
			2573	1642	445	476	10			

There are 4 discrepancies between the modelled and reference sequences:

Chain	Residue	Modelled	Actual	Comment	Reference
A	61	GLN	ASN	engineered mutation	UNP Q91977
A	371	GLN	ASN	engineered mutation	UNP Q91977
C	61	GLN	ASN	engineered mutation	UNP Q91977
C	371	GLN	ASN	engineered mutation	UNP Q91977

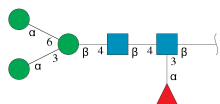
- Molecule 2 is a protein called Glutamate [NMDA] receptor subunit epsilon-2.

Mol	Chain	Residues	Atoms					ZeroOcc	AltConf	Trace
2	B	353	Total	C	N	O	S	0	0	0
			2608	1678	417	498	15			
2	D	345	Total	C	N	O	S	0	0	0
			2549	1644	401	488	16			

There are 2 discrepancies between the modelled and reference sequences:

Chain	Residue	Modelled	Actual	Comment	Reference
B	348	ASP	ASN	engineered mutation	UNP Q00960
D	348	ASP	ASN	engineered mutation	UNP Q00960

- Molecule 3 is an oligosaccharide called alpha-D-mannopyranose-(1-3)-[alpha-D-mannopyranose-(1-6)]beta-D-mannopyranose-(1-4)-2-acetamido-2-deoxy-beta-D-glucopyranose-(1-4)-[alpha-L-fucopyranose-(1-3)]2-acetamido-2-deoxy-beta-D-glucopyranose.

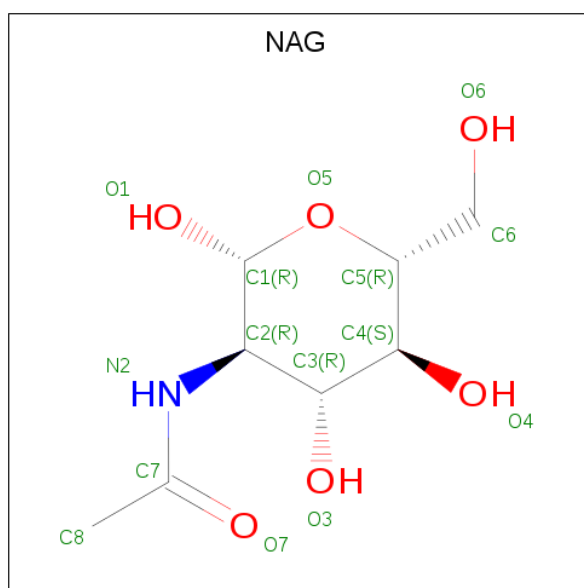


Mol	Chain	Residues	Atoms				ZeroOcc	AltConf	Trace
3	E	6	Total	C	N	O	0	0	0
			71	40	2	29			

- Molecule 4 is SODIUM ION (three-letter code: NA) (formula: Na).

Mol	Chain	Residues	Atoms		ZeroOcc	AltConf
4	A	1	Total	Na	0	0
			1	1		
4	C	1	Total	Na	0	0
			1	1		

- Molecule 5 is 2-acetamido-2-deoxy-beta-D-glucopyranose (three-letter code: NAG) (formula: C₈H₁₅NO₆).



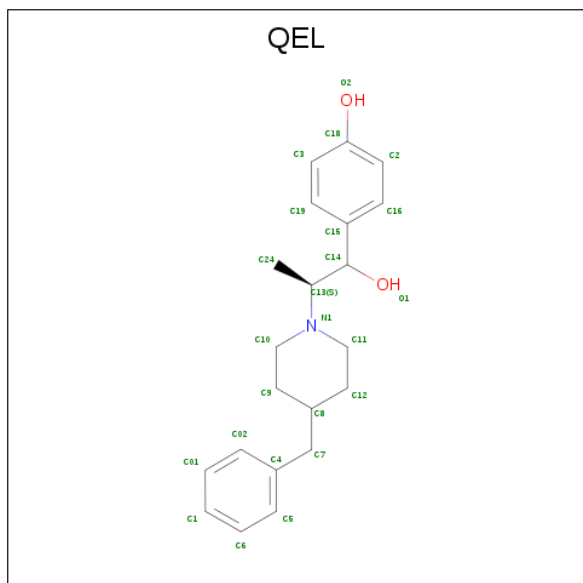
Mol	Chain	Residues	Atoms				ZeroOcc	AltConf
5	A	1	Total	C	N	O	0	0
			14	8	1	5		
5	B	1	Total	C	N	O	0	0
			14	8	1	5		
5	B	1	Total	C	N	O	0	0
			14	8	1	5		
5	C	1	Total	C	N	O	1	0
			14	8	1	5		

Continued on next page...

Continued from previous page...

Mol	Chain	Residues	Atoms				ZeroOcc	AltConf
5	D	1	Total	C	N	O	0	0
			14	8	1	5		
5	D	1	Total	C	N	O	0	0
			14	8	1	5		

- Molecule 6 is 4-[(1R,2S)-2-(4-benzylpiperidin-1-yl)-1-hydroxypropyl]phenol (three-letter code: QEL) (formula: C₂₁H₂₇NO₂).



Mol	Chain	Residues	Atoms				ZeroOcc	AltConf
6	B	1	Total	C	N	O	0	0
			24	21	1	2		
6	D	1	Total	C	N	O	0	0
			24	21	1	2		

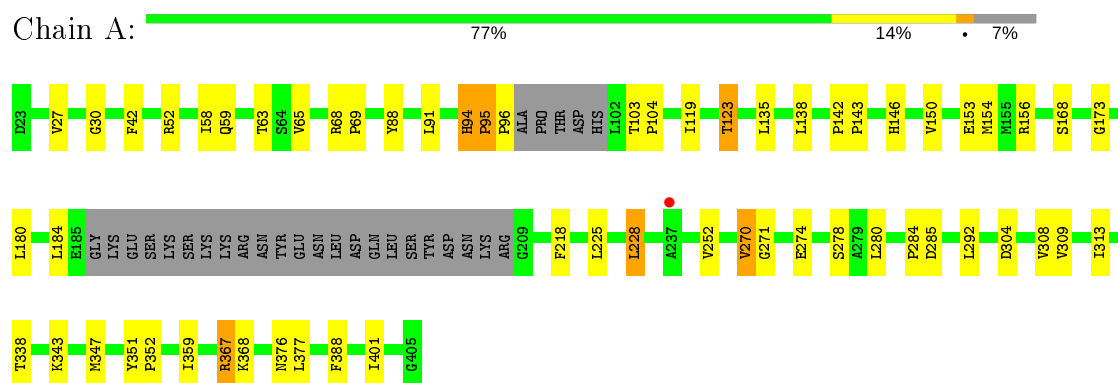
- Molecule 7 is water.

Mol	Chain	Residues	Atoms		ZeroOcc	AltConf
7	A	68	Total	O	0	0
			68	68		
7	B	31	Total	O	0	0
			31	31		
7	C	24	Total	O	0	0
			24	24		
7	D	14	Total	O	0	0
			14	14		

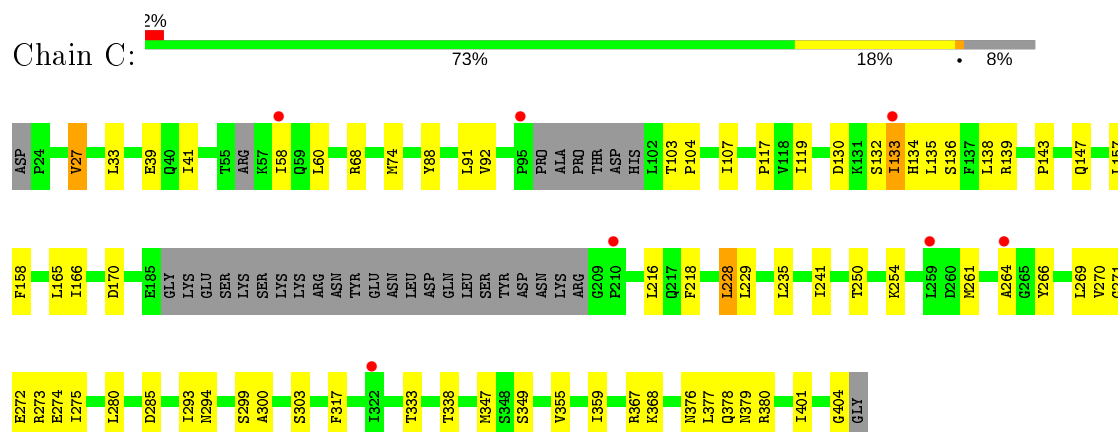
3 Residue-property plots

These plots are drawn for all protein, RNA, DNA and oligosaccharide chains in the entry. The first graphic for a chain summarises the proportions of the various outlier classes displayed in the second graphic. The second graphic shows the sequence view annotated by issues in geometry and electron density. Residues are color-coded according to the number of geometric quality criteria for which they contain at least one outlier: green = 0, yellow = 1, orange = 2 and red = 3 or more. A red dot above a residue indicates a poor fit to the electron density ($RSRZ > 2$). Stretches of 2 or more consecutive residues without any outlier are shown as a green connector. Residues present in the sample, but not in the model, are shown in grey.

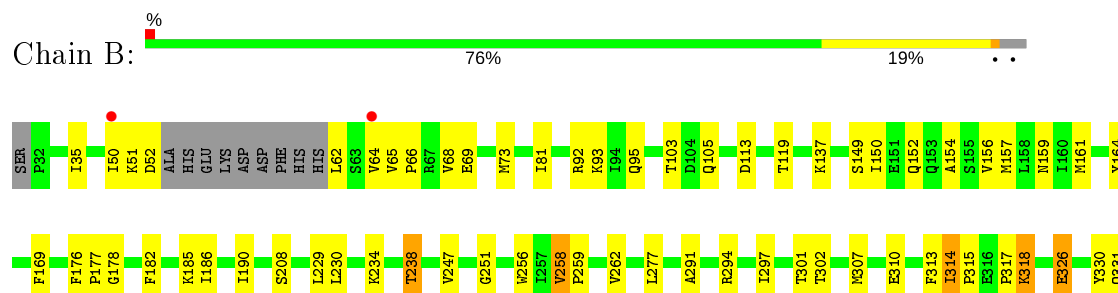
• Molecule 1: NMDA glutamate receptor subunit



• Molecule 1: NMDA glutamate receptor subunit



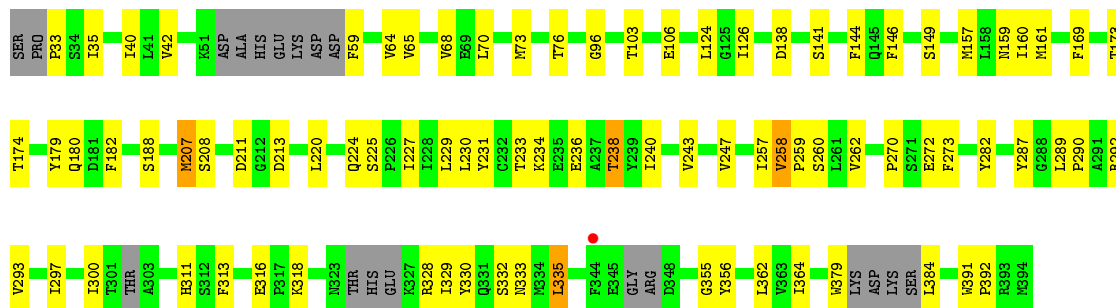
• Molecule 2: Glutamate [NMDA] receptor subunit epsilon-2





- Molecule 2: Glutamate [NMDA] receptor subunit epsilon-2

Chain D: 72% 22% • 5%



- Molecule 3: alpha-D-mannopyranose-(1-3)-[alpha-D-mannopyranose-(1-6)]beta-D-mannopyranose-(1-4)-2-acetamido-2-deoxy-beta-D-glucopyranose-(1-4)-[alpha-L-fucopyranose-(1-3)]2-acetamid o-2-deoxy-beta-D-glucopyranose

Chain E: 50% 50%



4 Data and refinement statistics

Property	Value	Source
Space group	C 1 2 1	Depositor
Cell constants a, b, c, α , β , γ	267.99 Å 60.87 Å 144.92 Å 90.00° 116.49° 90.00°	Depositor
Resolution (Å)	29.98 – 2.60 48.43 – 2.60	Depositor EDS
% Data completeness (in resolution range)	92.0 (29.98-2.60) 98.1 (48.43-2.60)	Depositor EDS
R_{merge}	0.51	Depositor
R_{sym}	0.51	Depositor
$\langle I/\sigma(I) \rangle$ ¹	2.35 (at 2.61 Å)	Xtriage
Refinement program	PHENIX (phenix.refine: 1.6.4_486)	Depositor
R, R_{free}	0.188 , 0.238 0.190 , 0.239	Depositor DCC
R_{free} test set	3255 reflections (5.09%)	wwPDB-VP
Wilson B-factor (Å ²)	53.4	Xtriage
Anisotropy	0.467	Xtriage
Bulk solvent k_{sol} (e/Å ³), B_{sol} (Å ²)	0.34 , 59.0	EDS
L-test for twinning ²	$\langle L \rangle = 0.49$, $\langle L^2 \rangle = 0.32$	Xtriage
Estimated twinning fraction	No twinning to report.	Xtriage
F_o, F_c correlation	0.95	EDS
Total number of atoms	10737	wwPDB-VP
Average B, all atoms (Å ²)	64.0	wwPDB-VP

Xtriage's analysis on translational NCS is as follows: *The largest off-origin peak in the Patterson function is 3.55% of the height of the origin peak. No significant pseudotranslation is detected.*

¹Intensities estimated from amplitudes.

²Theoretical values of $\langle |L| \rangle$, $\langle L^2 \rangle$ for acentric reflections are 0.5, 0.333 respectively for untwinned datasets, and 0.375, 0.2 for perfectly twinned datasets.

5 Model quality [i](#)

5.1 Standard geometry [i](#)

Bond lengths and bond angles in the following residue types are not validated in this section: BMA, NAG, NA, QEL, FUC, MAN

The Z score for a bond length (or angle) is the number of standard deviations the observed value is removed from the expected value. A bond length (or angle) with $|Z| > 5$ is considered an outlier worth inspection. RMSZ is the root-mean-square of all Z scores of the bond lengths (or angles).

Mol	Chain	Bond lengths		Bond angles	
		RMSZ	# $ Z > 5$	RMSZ	# $ Z > 5$
1	A	0.46	0/2722	0.60	0/3713
1	C	0.36	0/2626	0.53	0/3589
2	B	0.41	0/2666	0.57	0/3648
2	D	0.36	0/2602	0.57	2/3555 (0.1%)
All	All	0.40	0/10616	0.57	2/14505 (0.0%)

There are no bond length outliers.

All (2) bond angle outliers are listed below:

Mol	Chain	Res	Type	Atoms	Z	Observed(°)	Ideal(°)
2	D	224	GLN	CB-CA-C	-5.39	99.62	110.40
2	D	103	THR	CB-CA-C	-5.08	97.89	111.60

There are no chirality outliers.

There are no planarity outliers.

5.2 Too-close contacts [i](#)

In the following table, the Non-H and H(model) columns list the number of non-hydrogen atoms and hydrogen atoms in the chain respectively. The H(added) column lists the number of hydrogen atoms added and optimized by MolProbity. The Clashes column lists the number of clashes within the asymmetric unit, whereas Symm-Clashes lists symmetry related clashes.

Mol	Chain	Non-H	H(model)	H(added)	Clashes	Symm-Clashes
1	A	2665	0	2569	40	0
1	C	2573	0	2425	52	0
2	B	2608	0	2386	65	0
2	D	2549	0	2330	56	0
3	E	71	0	61	0	0

Continued on next page...

Continued from previous page...

Mol	Chain	Non-H	H(model)	H(added)	Clashes	Symm-Clashes
4	A	1	0	0	0	0
4	C	1	0	0	0	0
5	A	14	0	13	0	0
5	B	28	0	26	0	0
5	C	14	0	13	2	0
5	D	28	0	26	0	0
6	B	24	0	25	0	0
6	D	24	0	25	1	0
7	A	68	0	0	1	0
7	B	31	0	0	3	0
7	C	24	0	0	1	0
7	D	14	0	0	0	0
All	All	10737	0	9899	208	0

The all-atom clashscore is defined as the number of clashes found per 1000 atoms (including hydrogen atoms). The all-atom clashscore for this structure is 10.

All (208) close contacts within the same asymmetric unit are listed below, sorted by their clash magnitude.

Atom-1	Atom-2	Interatomic distance (Å)	Clash overlap (Å)
2:B:318:LYS:H	2:B:318:LYS:HE2	1.21	1.06
2:D:161:MET:HE1	2:D:229:LEU:HD21	1.49	0.93
1:A:218:PHE:HB3	1:A:228:LEU:HD13	1.59	0.82
1:C:147:GLN:HE22	1:C:272:GLU:H	1.32	0.78
2:B:119:THR:O	2:B:318:LYS:HD2	1.84	0.77
1:C:218:PHE:HB3	1:C:228:LEU:HD13	1.66	0.77
2:B:379:TRP:CZ2	2:B:382:LYS:HA	2.21	0.76
1:A:94:HIS:CE1	1:A:123:THR:HG23	2.20	0.75
1:C:270:VAL:HG13	1:C:274:GLU:HB2	1.70	0.74
1:C:147:GLN:HE22	1:C:272:GLU:N	1.86	0.73
1:A:94:HIS:HE1	1:A:123:THR:HG23	1.55	0.72
2:D:159:ASN:HD22	2:D:379:TRP:HZ3	1.38	0.70
1:C:355:VAL:HG11	5:C:502:NAG:H82	1.72	0.70
1:C:376:ASN:HD21	1:C:401:ILE:H	1.39	0.69
2:B:157:MET:HE3	2:B:229:LEU:HD22	1.75	0.69
2:D:96:GLY:HA3	2:D:300:ILE:HD13	1.75	0.68
1:C:378:GLN:HG2	1:C:401:ILE:HD12	1.77	0.67
2:D:362:LEU:HB2	2:D:379:TRP:HB3	1.76	0.67
1:C:92:VAL:HG21	1:C:107:ILE:HG21	1.78	0.66
1:A:367:ARG:HD2	1:A:368:LYS:O	1.96	0.65
2:D:35:ILE:HG23	2:D:64:VAL:HG21	1.77	0.65

Continued on next page...

Continued from previous page...

Atom-1	Atom-2	Interatomic distance (Å)	Clash overlap (Å)
2:B:318:LYS:HD3	2:B:331:GLN:OE1	1.96	0.65
2:D:258:VAL:HG22	2:D:262:VAL:HG21	1.80	0.64
2:D:258:VAL:HG13	2:D:262:VAL:HB	1.80	0.64
2:D:220:LEU:HD12	2:D:243:VAL:HG12	1.78	0.63
1:A:135:LEU:HD22	2:B:208:SER:HB3	1.80	0.62
1:A:103:THR:HB	1:A:104:PRO:HD2	1.81	0.62
1:C:133:ILE:HG13	1:C:134:HIS:CD2	2.34	0.62
2:D:157:MET:HE3	2:D:229:LEU:HD22	1.81	0.62
2:B:161:MET:HE1	2:B:229:LEU:HD11	1.81	0.61
2:B:152:GLN:O	2:B:156:VAL:HG23	2.00	0.61
2:B:169:PHE:HZ	2:B:190:ILE:HD11	1.64	0.61
2:D:293:VAL:O	2:D:297:ILE:HG13	2.00	0.60
2:B:68:VAL:HG21	2:B:297:ILE:HD13	1.83	0.59
1:C:92:VAL:CG2	1:C:107:ILE:HG21	2.32	0.59
1:A:68:ARG:NH1	7:A:443:HOH:O	2.33	0.59
2:D:68:VAL:HG21	2:D:297:ILE:HD13	1.84	0.59
1:C:27:VAL:HG23	1:C:60:LEU:HD23	1.85	0.59
2:B:318:LYS:CE	2:B:318:LYS:H	2.07	0.59
2:B:310:GLU:O	2:B:310:GLU:HG2	2.02	0.58
1:C:270:VAL:CG1	1:C:274:GLU:HB2	2.32	0.58
2:D:173:THR:HG22	2:D:231:TYR:HB3	1.85	0.57
2:B:119:THR:O	2:B:318:LYS:CD	2.51	0.57
1:A:65:VAL:HB	1:A:68:ARG:NH2	2.20	0.56
2:D:174:THR:HG21	2:D:207:MET:HG3	1.88	0.55
1:A:30:GLY:HA2	1:A:63:THR:O	2.06	0.55
1:C:293:ILE:O	1:C:294:ASN:HB2	2.06	0.55
2:D:159:ASN:HB3	2:D:384:LEU:HD22	1.87	0.55
2:D:174:THR:CG2	2:D:207:MET:HG3	2.38	0.54
2:D:233:THR:OG1	2:D:236:GLU:HG3	2.07	0.54
1:A:150:VAL:HG12	1:A:154:MET:HE2	1.90	0.54
2:B:313:PHE:CD2	2:D:332:SER:HB2	2.43	0.54
2:B:258:VAL:HG22	2:B:262:VAL:HG21	1.89	0.54
1:A:270:VAL:HG13	1:A:271:GLY:N	2.24	0.54
2:B:230:LEU:HB3	2:B:258:VAL:HG23	1.90	0.54
1:C:275:ILE:HB	1:C:280:LEU:HD13	1.90	0.54
1:A:309:VAL:O	1:A:313:ILE:HG12	2.08	0.53
1:C:367:ARG:HD2	1:C:368:LYS:O	2.08	0.53
2:B:291:ALA:O	2:B:294:ARG:HB3	2.08	0.53
2:B:247:VAL:HG12	2:B:247:VAL:O	2.08	0.53
2:B:95:GLN:NE2	2:B:315:PRO:O	2.40	0.53
2:B:65:VAL:CG2	2:B:66:PRO:HD2	2.39	0.53

Continued on next page...

Continued from previous page...

Atom-1	Atom-2	Interatomic distance (Å)	Clash overlap (Å)
1:C:376:ASN:ND2	1:C:401:ILE:H	2.06	0.53
1:C:228:LEU:HD23	1:C:229:LEU:HG	1.91	0.52
2:B:182:PHE:O	2:B:186:ILE:HG12	2.10	0.52
2:D:289:LEU:HB3	2:D:290:PRO:HD3	1.90	0.52
1:A:270:VAL:HG13	1:A:274:GLU:HB2	1.90	0.52
2:D:227:ILE:HD12	2:D:227:ILE:N	2.24	0.52
2:D:35:ILE:HG13	2:D:35:ILE:O	2.10	0.52
1:C:58:ILE:HD12	1:C:317:PHE:CD1	2.45	0.52
2:B:65:VAL:HG22	2:B:66:PRO:HD2	1.91	0.51
2:D:157:MET:HE1	2:D:182:PHE:HZ	1.74	0.51
1:A:103:THR:HB	1:A:104:PRO:CD	2.41	0.51
1:C:92:VAL:HG11	1:C:104:PRO:HB3	1.93	0.51
2:B:149:SER:HB3	2:B:356:TYR:CD1	2.46	0.51
1:C:119:ILE:HA	1:C:138:LEU:O	2.11	0.51
2:B:169:PHE:CZ	2:B:190:ILE:HD11	2.45	0.50
1:C:359:ILE:HG12	1:C:367:ARG:NH2	2.27	0.50
2:B:364:ILE:HD12	2:B:364:ILE:N	2.27	0.50
2:B:256:TRP:O	2:B:277:LEU:HD12	2.12	0.50
2:B:159:ASN:ND2	2:B:379:TRP:CZ3	2.80	0.50
2:B:149:SER:HB3	2:B:356:TYR:CG	2.47	0.50
2:B:35:ILE:HG23	2:B:64:VAL:HG21	1.93	0.50
1:C:117:PRO:HA	1:C:136:SER:HB2	1.94	0.50
1:C:300:ALA:HA	5:C:502:NAG:C8	2.41	0.49
1:A:27:VAL:HG13	1:A:88:TYR:CD1	2.47	0.49
2:B:362:LEU:HB2	2:B:379:TRP:HB3	1.95	0.49
1:C:157:LEU:HD23	1:C:158:PHE:HE2	1.78	0.49
1:C:165:LEU:HD12	1:C:166:ILE:N	2.28	0.49
2:D:258:VAL:HG21	2:D:262:VAL:HG11	1.94	0.49
1:A:65:VAL:HB	1:A:68:ARG:HH21	1.76	0.49
1:C:139:ARG:NH2	1:C:143:PRO:HB3	2.27	0.49
2:D:160:ILE:HD11	2:D:364:ILE:HG12	1.94	0.49
2:B:157:MET:HE1	2:B:229:LEU:HB3	1.95	0.48
1:C:132:SER:O	6:D:2:QEL:H19	2.14	0.48
2:D:106:GLU:OE1	2:D:106:GLU:N	2.44	0.48
2:B:354:ASP:HB2	2:B:356:TYR:CE2	2.49	0.48
1:C:103:THR:HB	1:C:104:PRO:HD2	1.96	0.48
1:C:27:VAL:HG12	1:C:88:TYR:CE1	2.49	0.48
2:B:176:PHE:CD1	2:B:177:PRO:HD2	2.49	0.48
2:B:230:LEU:O	2:B:259:PRO:HD3	2.14	0.48
1:A:95:PRO:HB2	1:A:96:PRO:HD2	1.96	0.47
2:D:159:ASN:ND2	2:D:379:TRP:HZ3	2.11	0.47

Continued on next page...

Continued from previous page...

Atom-1	Atom-2	Interatomic distance (Å)	Clash overlap (Å)
2:B:150:ILE:HD13	2:B:178:GLY:HA3	1.95	0.47
1:C:135:LEU:HD22	2:D:208:SER:HB3	1.95	0.47
1:C:103:THR:HB	1:C:104:PRO:CD	2.44	0.47
2:B:68:VAL:CG2	2:B:297:ILE:HD13	2.45	0.47
2:D:391:TRP:HA	2:D:392:PRO:HD3	1.69	0.47
2:D:149:SER:HB3	2:D:356:TYR:CD2	2.50	0.47
1:A:225:LEU:HD13	1:A:252:VAL:HG22	1.95	0.47
1:A:338:THR:O	1:A:338:THR:HG22	2.15	0.47
2:B:62:LEU:HD13	2:B:301:THR:HG22	1.97	0.47
1:C:130:ASP:OD2	1:C:132:SER:HB3	2.13	0.47
2:D:270:PRO:HG2	2:D:273:PHE:CE1	2.50	0.47
2:B:157:MET:HE2	2:B:229:LEU:HD13	1.96	0.47
2:B:314:ILE:HD12	2:B:314:ILE:HA	1.74	0.46
1:A:143:PRO:HG2	1:A:146:HIS:CD2	2.50	0.46
2:D:229:LEU:CD2	2:D:257:ILE:HB	2.46	0.46
2:D:35:ILE:HG23	2:D:64:VAL:CG2	2.45	0.46
2:D:328:ARG:C	2:D:330:TYR:H	2.19	0.46
1:A:68:ARG:HA	1:A:68:ARG:HD3	1.63	0.46
2:D:33:PRO:HB2	2:D:64:VAL:HG23	1.97	0.46
1:A:168:SER:O	1:A:173:GLY:HA3	2.16	0.46
2:D:311:HIS:O	2:D:313:PHE:HD2	1.99	0.46
1:C:379:ASN:C	1:C:380:ARG:HG2	2.36	0.45
2:D:234:LYS:O	2:D:238:THR:HG23	2.16	0.45
2:D:332:SER:OG	2:D:333:ASN:N	2.50	0.45
1:A:280:LEU:HD12	1:A:280:LEU:HA	1.77	0.45
2:B:391:TRP:HA	2:B:392:PRO:HD3	1.72	0.45
1:C:270:VAL:HG13	1:C:271:GLY:N	2.31	0.45
2:D:42:VAL:HG11	2:D:76:THR:CG2	2.47	0.45
1:A:308:VAL:HG21	1:A:359:ILE:HG21	1.98	0.45
1:A:376:ASN:ND2	1:A:401:ILE:H	2.14	0.45
2:B:234:LYS:HD2	2:B:262:VAL:O	2.17	0.45
1:C:157:LEU:HD23	1:C:158:PHE:CE2	2.52	0.45
1:C:261:MET:HA	1:C:266:TYR:CE1	2.52	0.44
2:D:213:ASP:N	2:D:213:ASP:OD1	2.46	0.44
1:C:165:LEU:HD12	1:C:166:ILE:H	1.82	0.44
1:C:241:ILE:HA	1:C:269:LEU:O	2.17	0.44
1:C:250:THR:HG22	1:C:254:LYS:HD2	2.00	0.44
1:C:41:ILE:HD13	1:C:299:SER:OG	2.18	0.44
2:B:92:ARG:HG2	2:B:93:LYS:H	1.82	0.44
2:B:35:ILE:HG23	2:B:64:VAL:CG2	2.48	0.44
1:A:351:TYR:HA	1:A:352:PRO:HD3	1.83	0.44

Continued on next page...

Continued from previous page...

Atom-1	Atom-2	Interatomic distance (Å)	Clash overlap (Å)
1:A:376:ASN:HD21	1:A:401:ILE:H	1.65	0.44
2:B:258:VAL:HG13	2:B:262:VAL:HB	2.00	0.44
2:B:50:ILE:O	2:B:52:ASP:N	2.49	0.44
2:D:144:PHE:HD1	2:D:355:GLY:HA2	1.82	0.44
2:D:157:MET:CE	2:D:229:LEU:HD22	2.48	0.44
2:D:68:VAL:CG2	2:D:297:ILE:HD13	2.48	0.44
2:B:307:MET:O	2:B:307:MET:HG2	2.17	0.43
1:C:33:LEU:HD12	1:C:39:GLU:HA	1.99	0.43
1:A:304:ASP:HB3	1:A:359:ILE:HD11	1.99	0.43
1:A:58:ILE:CD1	1:A:313:ILE:HG22	2.47	0.43
2:B:113:ASP:OD1	2:B:137:LYS:HB3	2.18	0.43
2:B:154:ALA:HB1	2:B:186:ILE:HD11	1.99	0.43
2:D:159:ASN:HB3	2:D:384:LEU:CD2	2.48	0.43
2:B:315:PRO:O	2:B:317:PRO:HD3	2.19	0.43
1:C:285:ASP:HA	1:C:377:LEU:HD23	2.00	0.43
1:A:343:LYS:O	1:A:347:MET:HG2	2.18	0.43
2:B:302:THR:HG21	2:B:342:VAL:HG13	2.00	0.43
1:C:91:LEU:HD12	1:C:91:LEU:N	2.34	0.43
1:A:119:ILE:HA	1:A:138:LEU:O	2.19	0.43
2:B:313:PHE:CG	2:D:332:SER:HB2	2.54	0.42
1:A:180:LEU:O	1:A:184:LEU:HG	2.19	0.42
2:B:157:MET:CE	2:B:229:LEU:HD13	2.48	0.42
1:C:235:LEU:N	1:C:235:LEU:HD23	2.34	0.42
1:C:280:LEU:HA	1:C:280:LEU:HD12	1.86	0.42
1:C:68:ARG:HG2	1:C:74:MET:HE3	2.00	0.42
2:D:124:LEU:HD22	2:D:144:PHE:HB2	2.01	0.42
2:D:282:TYR:CE2	2:D:292:ARG:NH1	2.87	0.42
2:D:126:ILE:HG22	2:D:146:PHE:CE1	2.54	0.42
1:A:142:PRO:HD2	1:A:292:LEU:HD21	2.02	0.42
2:B:152:GLN:HB2	2:B:152:GLN:HE21	1.52	0.42
1:A:376:ASN:HD21	1:A:401:ILE:N	2.18	0.42
1:A:58:ILE:O	1:A:58:ILE:HG13	2.20	0.42
2:B:185:LYS:HD2	2:B:185:LYS:O	2.20	0.42
2:B:234:LYS:O	2:B:238:THR:HG23	2.20	0.42
2:B:326:GLU:H	2:B:326:GLU:HG3	1.51	0.42
2:B:164:TYR:CZ	2:B:391:TRP:CE3	3.08	0.42
2:B:73:MET:HE1	2:B:81:ILE:HG12	2.01	0.42
2:D:230:LEU:O	2:D:259:PRO:HD3	2.19	0.42
1:A:156:ARG:HH11	1:A:156:ARG:HB2	1.85	0.41
2:B:105:GLN:NE2	7:B:24:HOH:O	2.53	0.41
2:D:138:ASP:O	2:D:141:SER:HB3	2.20	0.41

Continued on next page...

Continued from previous page...

Atom-1	Atom-2	Interatomic distance (Å)	Clash overlap (Å)
1:A:42:PHE:CE1	1:A:91:LEU:HD22	2.56	0.41
1:C:264:ALA:HB2	1:C:404:GLY:HA3	2.02	0.41
2:B:330:TYR:CD2	2:D:316:GLU:HG3	2.55	0.41
2:B:247:VAL:CG1	2:B:247:VAL:O	2.67	0.41
1:A:68:ARG:HB3	1:A:69:PRO:CD	2.50	0.41
1:C:147:GLN:NE2	7:C:21:HOH:O	2.52	0.41
2:D:157:MET:CE	2:D:182:PHE:HZ	2.33	0.41
2:B:251:GLY:N	7:B:403:HOH:O	2.53	0.41
1:C:216:LEU:N	1:C:216:LEU:HD23	2.35	0.41
1:C:338:THR:HG22	1:C:338:THR:O	2.21	0.41
1:A:153:GLU:HG3	1:A:388:PHE:HE1	1.86	0.41
2:B:154:ALA:HB1	2:B:186:ILE:CD1	2.50	0.41
2:B:68:VAL:HG12	2:B:69:GLU:N	2.36	0.41
2:D:179:TYR:CE1	2:D:180:GLN:HG3	2.56	0.41
2:D:173:THR:HA	2:D:231:TYR:O	2.21	0.41
2:D:40:ILE:CG2	2:D:73:MET:HE2	2.51	0.41
2:B:103:THR:HB	7:B:411:HOH:O	2.21	0.40
2:D:335:LEU:HA	2:D:335:LEU:HD23	1.86	0.40
2:D:247:VAL:HG12	2:D:247:VAL:O	2.21	0.40
1:A:284:PRO:O	1:A:377:LEU:HD23	2.21	0.40
1:C:218:PHE:HB3	1:C:228:LEU:CD1	2.44	0.40
1:C:27:VAL:CG2	1:C:60:LEU:HD23	2.51	0.40
2:D:169:PHE:HA	2:D:225:SER:HB3	2.04	0.40

There are no symmetry-related clashes.

5.3 Torsion angles [i](#)

5.3.1 Protein backbone [i](#)

In the following table, the Percentiles column shows the percent Ramachandran outliers of the chain as a percentile score with respect to all X-ray entries followed by that with respect to entries of similar resolution.

The Analysed column shows the number of residues for which the backbone conformation was analysed, and the total number of residues.

Mol	Chain	Analysed	Favoured	Allowed	Outliers	Percentiles
1	A	349/383 (91%)	338 (97%)	10 (3%)	1 (0%)	41 64
1	C	343/383 (90%)	320 (93%)	23 (7%)	0	100 100

Continued on next page...

Continued from previous page...

Mol	Chain	Analysed	Favoured	Allowed	Outliers	Percentiles
2	B	349/364 (96%)	321 (92%)	27 (8%)	1 (0%)	41 64
2	D	333/364 (92%)	315 (95%)	17 (5%)	1 (0%)	41 64
All	All	1374/1494 (92%)	1294 (94%)	77 (6%)	3 (0%)	47 71

All (3) Ramachandran outliers are listed below:

Mol	Chain	Res	Type
2	B	51	LYS
2	D	318	LYS
1	A	95	PRO

5.3.2 Protein sidechains ⓘ

In the following table, the Percentiles column shows the percent sidechain outliers of the chain as a percentile score with respect to all X-ray entries followed by that with respect to entries of similar resolution.

The Analysed column shows the number of residues for which the sidechain conformation was analysed, and the total number of residues.

Mol	Chain	Analysed	Rotameric	Outliers	Percentiles
1	A	272/329 (83%)	263 (97%)	9 (3%)	38 64
1	C	253/329 (77%)	244 (96%)	9 (4%)	35 61
2	B	258/327 (79%)	251 (97%)	7 (3%)	44 71
2	D	255/327 (78%)	241 (94%)	14 (6%)	21 43
All	All	1038/1312 (79%)	999 (96%)	39 (4%)	33 59

All (39) residues with a non-rotameric sidechain are listed below:

Mol	Chain	Res	Type
1	A	52	ARG
1	A	59	GLN
1	A	94	HIS
1	A	123	THR
1	A	228	LEU
1	A	270	VAL
1	A	278	SER
1	A	285	ASP
1	A	367	ARG

Continued on next page...

Continued from previous page...

Mol	Chain	Res	Type
2	B	238	THR
2	B	258	VAL
2	B	314	ILE
2	B	318	LYS
2	B	326	GLU
2	B	340	ILE
2	B	393	ARG
1	C	27	VAL
1	C	133	ILE
1	C	170	ASP
1	C	228	LEU
1	C	273	ARG
1	C	303	SER
1	C	333	THR
1	C	347	MET
1	C	349	SER
2	D	59	PHE
2	D	65	VAL
2	D	70	LEU
2	D	188	SER
2	D	207	MET
2	D	211	ASP
2	D	238	THR
2	D	240	ILE
2	D	258	VAL
2	D	260	SER
2	D	272	GLU
2	D	287	TYR
2	D	329	ILE
2	D	335	LEU

Some sidechains can be flipped to improve hydrogen bonding and reduce clashes. All (20) such sidechains are listed below:

Mol	Chain	Res	Type
1	A	59	GLN
1	A	94	HIS
1	A	146	HIS
1	A	376	ASN
2	B	105	GLN
2	B	152	GLN
2	B	311	HIS
2	B	333	ASN

Continued on next page...

Continued from previous page...

Mol	Chain	Res	Type
1	C	38	HIS
1	C	94	HIS
1	C	147	GLN
1	C	159	ASN
1	C	376	ASN
1	C	384	GLN
2	D	110	GLN
2	D	118	GLN
2	D	127	HIS
2	D	152	GLN
2	D	218	ASN
2	D	311	HIS

5.3.3 RNA ⓘ

There are no RNA molecules in this entry.

5.4 Non-standard residues in protein, DNA, RNA chains ⓘ

There are no non-standard protein/DNA/RNA residues in this entry.

5.5 Carbohydrates ⓘ

6 monosaccharides are modelled in this entry.

In the following table, the Counts columns list the number of bonds (or angles) for which Mogul statistics could be retrieved, the number of bonds (or angles) that are observed in the model and the number of bonds (or angles) that are defined in the Chemical Component Dictionary. The Link column lists molecule types, if any, to which the group is linked. The Z score for a bond length (or angle) is the number of standard deviations the observed value is removed from the expected value. A bond length (or angle) with $|Z| > 2$ is considered an outlier worth inspection. RMSZ is the root-mean-square of all Z scores of the bond lengths (or angles).

Mol	Type	Chain	Res	Link	Bond lengths			Bond angles		
					Counts	RMSZ	$\# Z > 2$	Counts	RMSZ	$\# Z > 2$
3	NAG	E	1	1,3	14,14,15	0.64	0	17,19,21	0.71	0
3	NAG	E	2	3	14,14,15	0.73	0	17,19,21	0.91	0
3	BMA	E	3	3	11,11,12	1.01	1 (9%)	15,15,17	2.42	4 (26%)
3	MAN	E	4	3	11,11,12	0.74	0	15,15,17	1.05	1 (6%)
3	MAN	E	5	3	11,11,12	0.80	0	15,15,17	0.95	0
3	FUC	E	6	3	10,10,11	1.75	2 (20%)	14,14,16	1.66	5 (35%)

In the following table, the Chirals column lists the number of chiral outliers, the number of chiral centers analysed, the number of these observed in the model and the number defined in the Chemical Component Dictionary. Similar counts are reported in the Torsion and Rings columns. '-' means no outliers of that kind were identified.

Mol	Type	Chain	Res	Link	Chirals	Torsions	Rings
3	NAG	E	1	1,3	-	0/6/23/26	0/1/1/1
3	NAG	E	2	3	-	0/6/23/26	0/1/1/1
3	BMA	E	3	3	-	2/2/19/22	0/1/1/1
3	MAN	E	4	3	-	1/2/19/22	0/1/1/1
3	MAN	E	5	3	-	0/2/19/22	0/1/1/1
3	FUC	E	6	3	1/1/4/5	-	0/1/1/1

All (3) bond length outliers are listed below:

Mol	Chain	Res	Type	Atoms	Z	Observed(Å)	Ideal(Å)
3	E	6	FUC	C2-C3	-4.22	1.46	1.52
3	E	6	FUC	C4-C3	-2.55	1.45	1.52
3	E	3	BMA	C4-C5	2.20	1.57	1.53

All (10) bond angle outliers are listed below:

Mol	Chain	Res	Type	Atoms	Z	Observed(°)	Ideal(°)
3	E	3	BMA	O5-C5-C6	5.30	115.51	107.20
3	E	3	BMA	O2-C2-C3	4.27	118.69	110.14
3	E	3	BMA	O3-C3-C2	4.02	117.68	109.99
3	E	3	BMA	O3-C3-C4	3.41	118.23	110.35
3	E	4	MAN	O5-C5-C6	2.82	111.62	107.20
3	E	6	FUC	C1-C2-C3	2.69	112.97	109.67
3	E	6	FUC	O5-C5-C4	2.65	114.27	109.52
3	E	6	FUC	O5-C1-C2	2.35	114.41	110.77
3	E	6	FUC	C1-O5-C5	2.18	117.72	112.78
3	E	6	FUC	O5-C5-C6	2.02	111.67	107.33

All (1) chirality outliers are listed below:

Mol	Chain	Res	Type	Atom
3	E	6	FUC	C1

All (3) torsion outliers are listed below:

Mol	Chain	Res	Type	Atoms
3	E	3	BMA	O5-C5-C6-O6
3	E	3	BMA	C4-C5-C6-O6

Continued on next page...

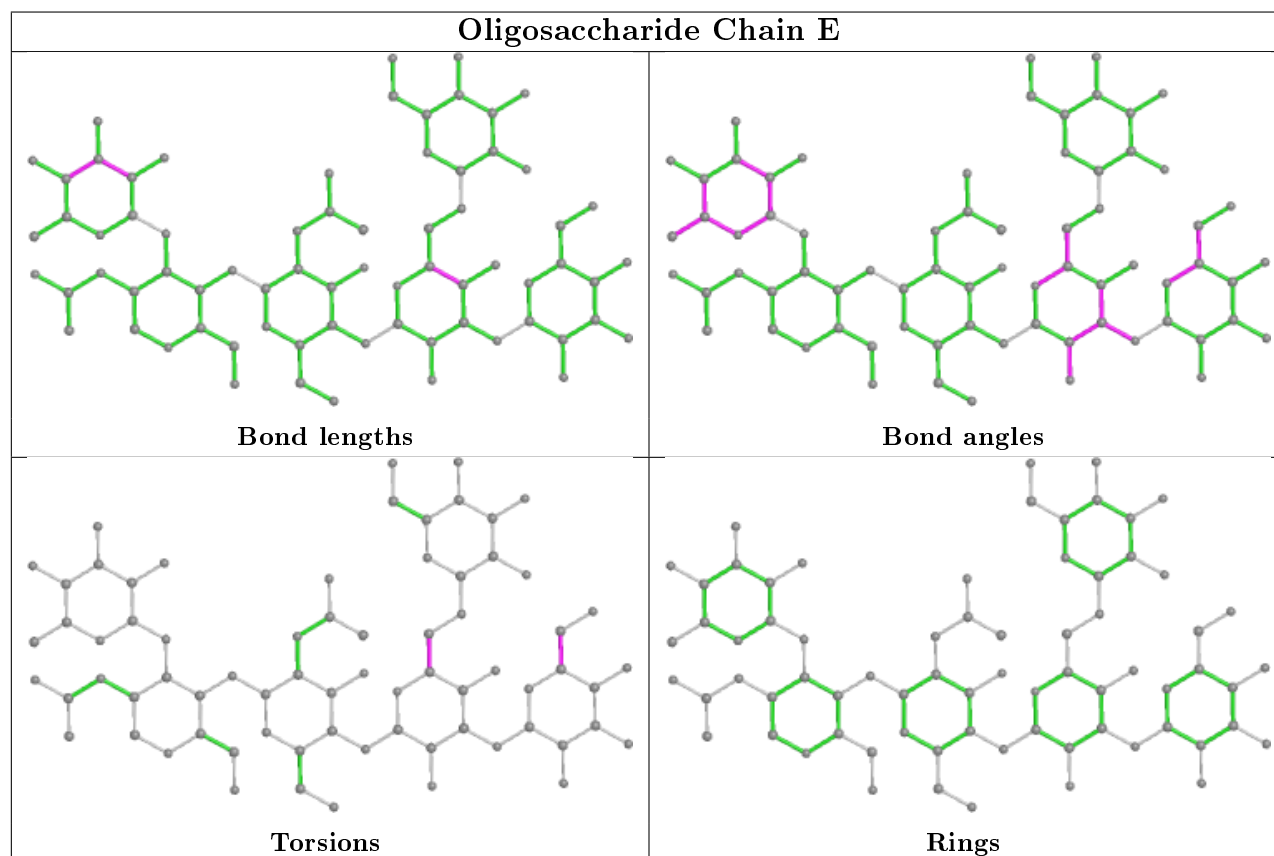
Continued from previous page...

Mol	Chain	Res	Type	Atoms
3	E	4	MAN	O5-C5-C6-O6

There are no ring outliers.

No monomer is involved in short contacts.

The following is a two-dimensional graphical depiction of Mogul quality analysis of bond lengths, bond angles, torsion angles, and ring geometry for oligosaccharide.



5.6 Ligand geometry ⓘ

Of 10 ligands modelled in this entry, 2 are monoatomic - leaving 8 for Mogul analysis.

In the following table, the Counts columns list the number of bonds (or angles) for which Mogul statistics could be retrieved, the number of bonds (or angles) that are observed in the model and the number of bonds (or angles) that are defined in the Chemical Component Dictionary. The Link column lists molecule types, if any, to which the group is linked. The Z score for a bond length (or angle) is the number of standard deviations the observed value is removed from the expected value. A bond length (or angle) with $|Z| > 2$ is considered an outlier worth inspection. RMSZ is the root-mean-square of all Z scores of the bond lengths (or angles).

Mol	Type	Chain	Res	Link	Bond lengths			Bond angles		
					Counts	RMSZ	# Z > 2	Counts	RMSZ	# Z > 2
5	NAG	A	502	1	14,14,15	0.67	0	17,19,21	1.25	2 (11%)
5	NAG	D	502	2	14,14,15	0.61	0	17,19,21	1.52	2 (11%)
5	NAG	B	502	2	14,14,15	0.60	0	17,19,21	1.37	2 (11%)
6	QEL	B	1	-	26,26,26	2.56	9 (34%)	35,35,35	2.11	8 (22%)
6	QEL	D	2	-	26,26,26	2.70	11 (42%)	35,35,35	2.10	10 (28%)
5	NAG	B	501	2	14,14,15	0.41	0	17,19,21	1.22	2 (11%)
5	NAG	D	501	2	14,14,15	0.46	0	17,19,21	0.76	0
5	NAG	C	502	1	14,14,15	0.52	0	17,19,21	1.04	1 (5%)

In the following table, the Chirals column lists the number of chiral outliers, the number of chiral centers analysed, the number of these observed in the model and the number defined in the Chemical Component Dictionary. Similar counts are reported in the Torsion and Rings columns. '-' means no outliers of that kind were identified.

Mol	Type	Chain	Res	Link	Chirals	Torsions	Rings
5	NAG	A	502	1	-	4/6/23/26	0/1/1/1
5	NAG	D	502	2	1/1/5/7	2/6/23/26	0/1/1/1
5	NAG	B	502	2	1/1/5/7	3/6/23/26	0/1/1/1
6	QEL	B	1	-	1/1/4/4	8/16/26/26	0/3/3/3
6	QEL	D	2	-	1/1/4/4	5/16/26/26	0/3/3/3
5	NAG	B	501	2	1/1/5/7	1/6/23/26	0/1/1/1
5	NAG	D	501	2	1/1/5/7	2/6/23/26	0/1/1/1
5	NAG	C	502	1	1/1/5/7	4/6/23/26	0/1/1/1

All (20) bond length outliers are listed below:

Mol	Chain	Res	Type	Atoms	Z	Observed(Å)	Ideal(Å)
6	D	2	QEL	O1-C14	-10.11	1.23	1.42
6	B	1	QEL	O1-C14	-9.62	1.23	1.42
6	D	2	QEL	C3-C18	-3.57	1.32	1.38
6	B	1	QEL	C14-C13	-3.48	1.49	1.54
6	B	1	QEL	C3-C18	-3.26	1.32	1.38
6	D	2	QEL	C14-C13	-2.99	1.50	1.54
6	B	1	QEL	C9-C8	-2.81	1.44	1.52
6	D	2	QEL	C9-C8	-2.76	1.44	1.52
6	B	1	QEL	C24-C13	-2.74	1.47	1.52
6	D	2	QEL	C16-C2	2.71	1.43	1.38
6	B	1	QEL	C16-C15	-2.56	1.34	1.39
6	D	2	QEL	C24-C13	-2.50	1.47	1.52

Continued on next page...

Continued from previous page...

Mol	Chain	Res	Type	Atoms	Z	Observed(Å)	Ideal(Å)
6	B	1	QEL	C19-C3	2.27	1.42	1.38
6	D	2	QEL	C16-C15	-2.25	1.35	1.39
6	D	2	QEL	C02-C4	2.22	1.43	1.38
6	B	1	QEL	C16-C2	2.19	1.42	1.38
6	D	2	QEL	C19-C3	2.18	1.42	1.38
6	D	2	QEL	C7-C8	2.09	1.60	1.53
6	D	2	QEL	C6-C1	2.04	1.43	1.38
6	B	1	QEL	O2-C18	2.03	1.41	1.37

All (27) bond angle outliers are listed below:

Mol	Chain	Res	Type	Atoms	Z	Observed(°)	Ideal(°)
6	B	1	QEL	O1-C14-C15	5.87	123.98	111.19
6	D	2	QEL	C24-C13-C14	-5.43	103.69	111.92
6	D	2	QEL	O1-C14-C15	5.19	122.50	111.19
6	B	1	QEL	O1-C14-C13	4.94	120.84	108.47
6	B	1	QEL	C24-C13-C14	-4.80	104.64	111.92
6	D	2	QEL	O1-C14-C13	4.72	120.28	108.47
6	B	1	QEL	C12-C8-C7	-4.17	102.13	111.88
6	B	1	QEL	C11-N1-C10	3.95	116.30	109.08
5	D	502	NAG	O5-C1-C2	3.73	117.17	111.29
6	D	2	QEL	C19-C15-C14	-3.41	115.64	120.73
5	C	502	NAG	O5-C5-C6	3.32	112.41	107.20
6	D	2	QEL	C12-C8-C7	-3.29	104.19	111.88
5	B	502	NAG	O5-C5-C6	3.09	112.05	107.20
5	A	502	NAG	C2-N2-C7	-3.05	118.55	122.90
6	D	2	QEL	C16-C15-C14	2.96	125.15	120.73
6	D	2	QEL	C14-C13-N1	2.91	116.27	108.95
6	D	2	QEL	C15-C14-C13	2.88	116.94	112.34
5	B	502	NAG	O5-C1-C2	2.80	115.70	111.29
5	D	502	NAG	O5-C5-C6	2.76	111.53	107.20
5	B	501	NAG	O5-C5-C6	2.62	111.31	107.20
6	B	1	QEL	C19-C15-C14	-2.38	117.17	120.73
6	D	2	QEL	C9-C10-N1	2.28	114.93	111.43
6	B	1	QEL	C4-C7-C8	2.27	118.75	114.50
6	B	1	QEL	C11-N1-C13	2.22	120.52	113.38
6	D	2	QEL	C11-N1-C13	2.21	120.48	113.38
5	A	502	NAG	C1-O5-C5	2.14	115.09	112.19
5	B	501	NAG	C1-O5-C5	2.07	115.00	112.19

All (7) chirality outliers are listed below:

Mol	Chain	Res	Type	Atom
5	D	502	NAG	C1
5	B	502	NAG	C1
6	B	1	QEL	C14
6	D	2	QEL	C14
5	B	501	NAG	C1
5	D	501	NAG	C1
5	C	502	NAG	C1

All (29) torsion outliers are listed below:

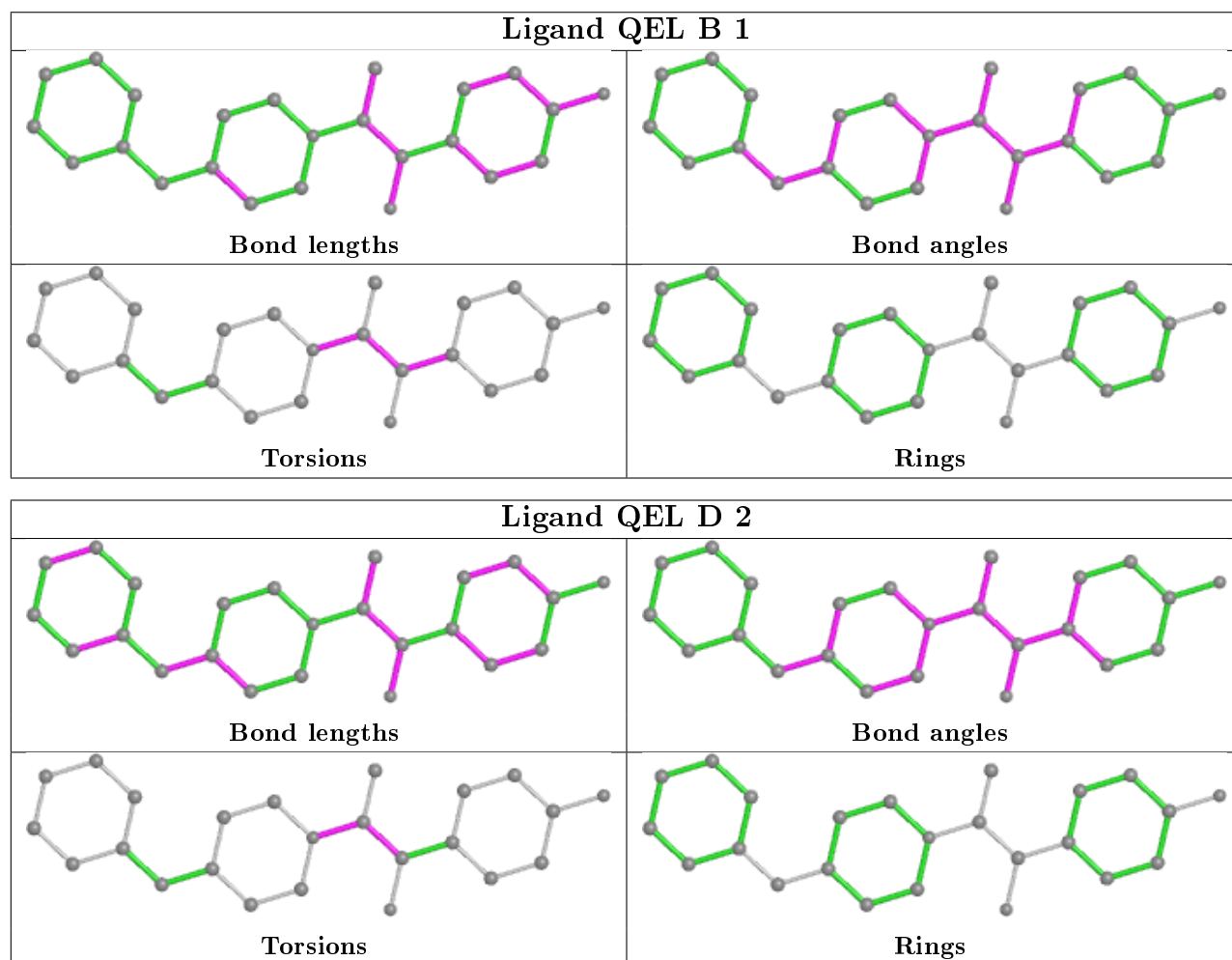
Mol	Chain	Res	Type	Atoms
5	B	502	NAG	C8-C7-N2-C2
5	B	502	NAG	O7-C7-N2-C2
6	B	1	QEL	C24-C13-N1-C10
6	D	2	QEL	C24-C13-N1-C10
6	D	2	QEL	C24-C13-N1-C11
5	D	502	NAG	C8-C7-N2-C2
5	D	502	NAG	O7-C7-N2-C2
5	C	502	NAG	O5-C5-C6-O6
5	A	502	NAG	O5-C5-C6-O6
5	D	501	NAG	C8-C7-N2-C2
5	C	502	NAG	C4-C5-C6-O6
5	A	502	NAG	C4-C5-C6-O6
5	D	501	NAG	O7-C7-N2-C2
5	A	502	NAG	C8-C7-N2-C2
5	C	502	NAG	C8-C7-N2-C2
5	A	502	NAG	O7-C7-N2-C2
5	C	502	NAG	O7-C7-N2-C2
6	B	1	QEL	C24-C13-N1-C11
6	D	2	QEL	C24-C13-C14-O1
5	B	502	NAG	C4-C5-C6-O6
6	B	1	QEL	N1-C13-C14-C15
6	D	2	QEL	N1-C13-C14-C15
6	B	1	QEL	C24-C13-C14-O1
6	B	1	QEL	C24-C13-C14-C15
6	D	2	QEL	C24-C13-C14-C15
6	B	1	QEL	O1-C14-C15-C19
6	B	1	QEL	C14-C13-N1-C10
6	B	1	QEL	C14-C13-N1-C11
5	B	501	NAG	C1-C2-N2-C7

There are no ring outliers.

2 monomers are involved in 3 short contacts:

Mol	Chain	Res	Type	Clashes	Symm-Clashes
6	D	2	QEL	1	0
5	C	502	NAG	2	0

The following is a two-dimensional graphical depiction of Mogul quality analysis of bond lengths, bond angles, torsion angles, and ring geometry for all instances of the Ligand of Interest. In addition, ligands with molecular weight > 250 and outliers as shown on the validation Tables will also be included. For torsion angles, if less than 5% of the Mogul distribution of torsion angles is within 10 degrees of the torsion angle in question, then that torsion angle is considered an outlier. Any bond that is central to one or more torsion angles identified as an outlier by Mogul will be highlighted in the graph. For rings, the root-mean-square deviation (RMSD) between the ring in question and similar rings identified by Mogul is calculated over all ring torsion angles. If the average RMSD is greater than 60 degrees and the minimal RMSD between the ring in question and any Mogul-identified rings is also greater than 60 degrees, then that ring is considered an outlier. The outliers are highlighted in purple. The color gray indicates Mogul did not find sufficient equivalents in the CSD to analyse the geometry.



5.7 Other polymers

There are no such residues in this entry.

5.8 Polymer linkage issues

There are no chain breaks in this entry.

6 Fit of model and data [i](#)

6.1 Protein, DNA and RNA chains [i](#)

In the following table, the column labelled ‘#RSRZ> 2’ contains the number (and percentage) of RSRZ outliers, followed by percent RSRZ outliers for the chain as percentile scores relative to all X-ray entries and entries of similar resolution. The OWAB column contains the minimum, median, 95th percentile and maximum values of the occupancy-weighted average B-factor per residue. The column labelled ‘Q< 0.9’ lists the number of (and percentage) of residues with an average occupancy less than 0.9.

Mol	Chain	Analysed	<RSRZ>	#RSRZ>2	OWAB(Å ²)	Q<0.9
1	A	355/383 (92%)	-0.32	1 (0%) 94 93	28, 45, 80, 100	0
1	C	351/383 (91%)	-0.05	7 (1%) 65 60	46, 70, 102, 122	0
2	B	353/364 (96%)	-0.19	5 (1%) 75 71	30, 62, 100, 125	0
2	D	345/364 (94%)	-0.23	1 (0%) 94 93	44, 70, 116, 133	0
All	All	1404/1494 (93%)	-0.20	14 (0%) 82 80	28, 64, 102, 133	0

All (14) RSRZ outliers are listed below:

Mol	Chain	Res	Type	RSRZ
2	B	344	PHE	3.6
1	C	210	PRO	3.3
2	B	342	VAL	2.8
1	C	58	ILE	2.7
2	B	346	GLY	2.5
1	A	237	ALA	2.5
2	B	50	ILE	2.4
1	C	322	ILE	2.3
1	C	259	LEU	2.2
1	C	264	ALA	2.2
2	D	344	PHE	2.2
1	C	95	PRO	2.1
1	C	133	ILE	2.1
2	B	64	VAL	2.0

6.2 Non-standard residues in protein, DNA, RNA chains [i](#)

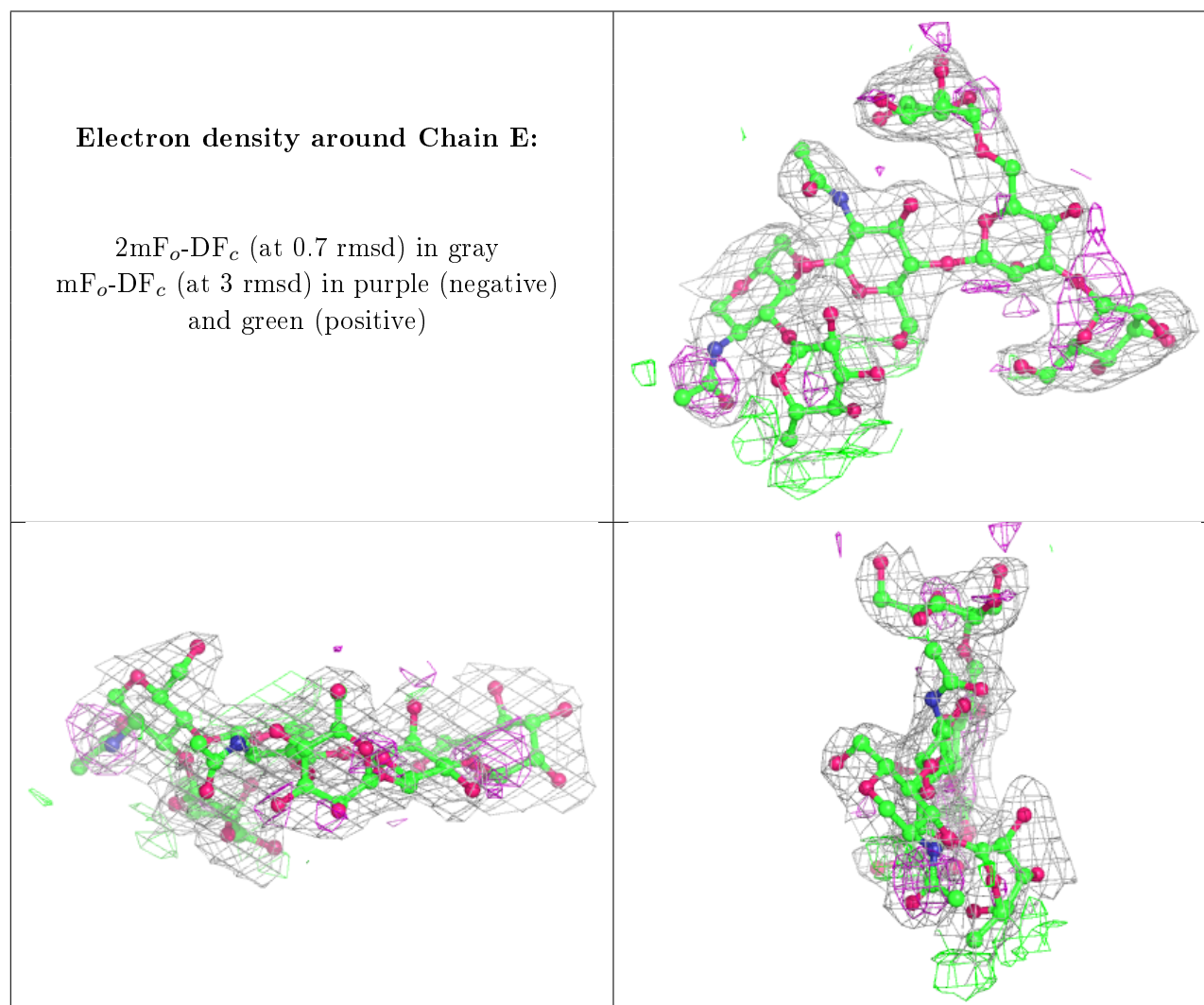
There are no non-standard protein/DNA/RNA residues in this entry.

6.3 Carbohydrates ⓘ

In the following table, the Atoms column lists the number of modelled atoms in the group and the number defined in the chemical component dictionary. The B-factors column lists the minimum, median, 95th percentile and maximum values of B factors of atoms in the group. The column labelled 'Q< 0.9' lists the number of atoms with occupancy less than 0.9.

Mol	Type	Chain	Res	Atoms	RSCC	RSR	B-factors(Å ²)	Q<0.9
3	MAN	E	4	11/12	0.78	0.30	72,81,83,85	0
3	FUC	E	6	10/11	0.83	0.21	63,71,77,79	10
3	BMA	E	3	11/12	0.91	0.23	47,55,62,68	0
3	NAG	E	1	14/15	0.94	0.14	42,54,57,60	0
3	NAG	E	2	14/15	0.96	0.16	50,56,61,65	0
3	MAN	E	5	11/12	0.96	0.24	45,48,52,53	0

The following is a graphical depiction of the model fit to experimental electron density for oligosaccharide. Each fit is shown from different orientation to approximate a three-dimensional view.

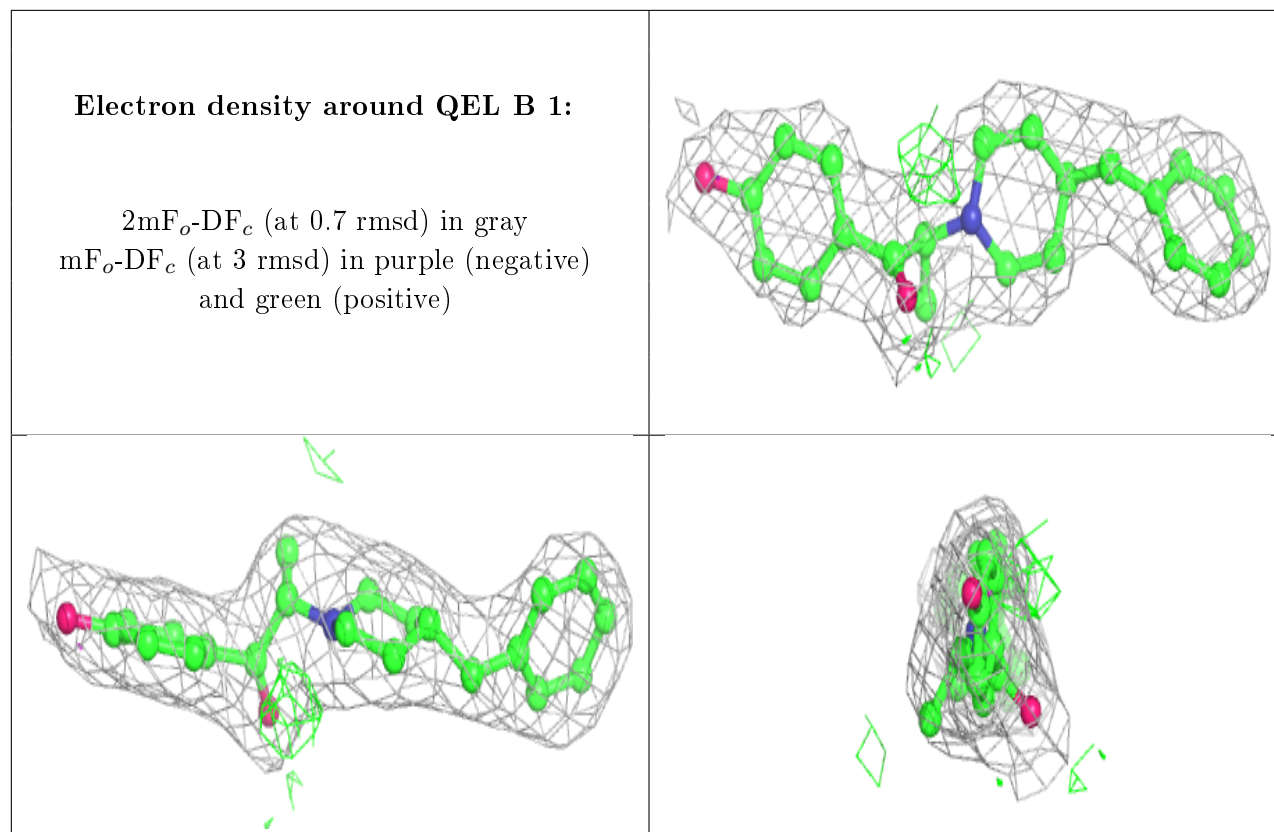


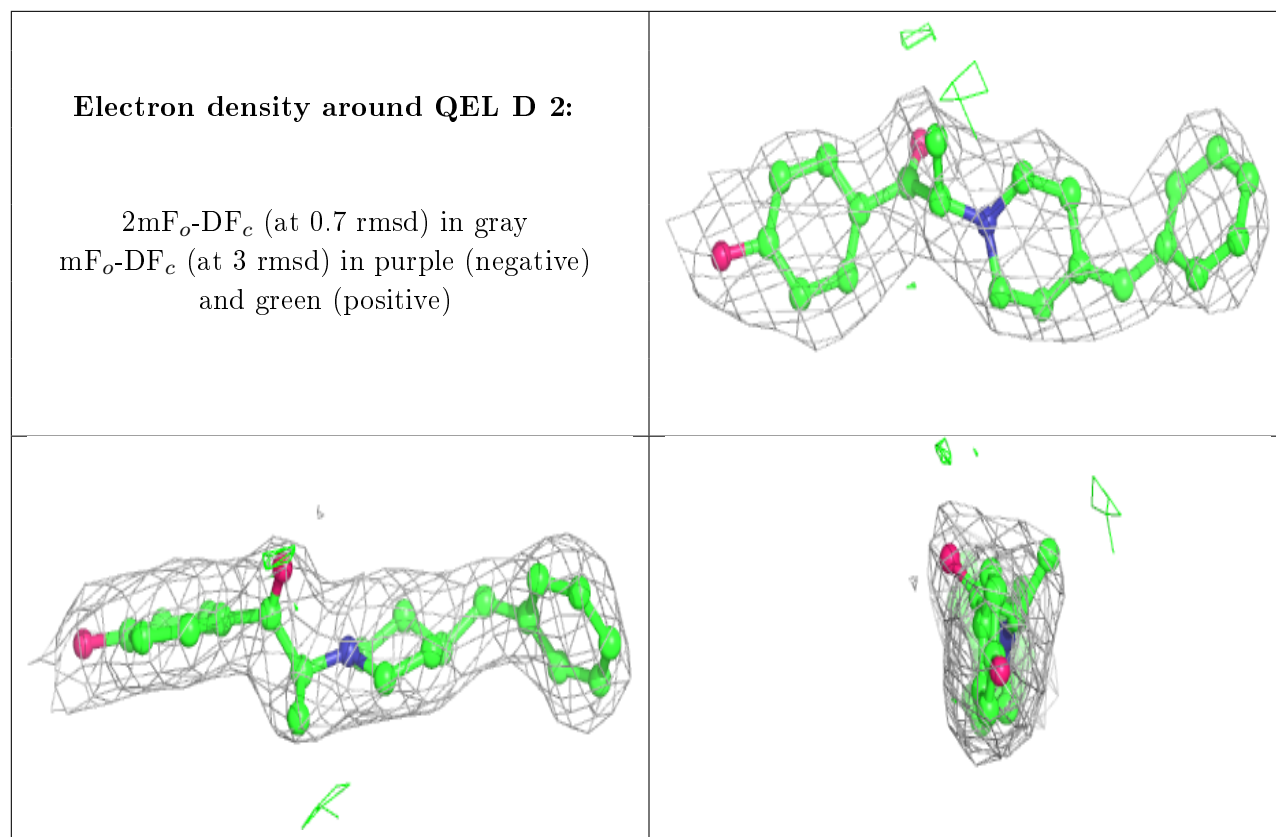
6.4 Ligands ⓘ

In the following table, the Atoms column lists the number of modelled atoms in the group and the number defined in the chemical component dictionary. The B-factors column lists the minimum, median, 95th percentile and maximum values of B factors of atoms in the group. The column labelled 'Q< 0.9' lists the number of atoms with occupancy less than 0.9.

Mol	Type	Chain	Res	Atoms	RSCC	RSR	B-factors(Å ²)	Q<0.9
5	NAG	D	501	14/15	0.66	0.34	96,106,111,112	0
5	NAG	D	502	14/15	0.73	0.38	105,115,116,121	0
5	NAG	C	502	14/15	0.81	0.20	65,71,75,80	4
5	NAG	B	501	14/15	0.85	0.19	97,101,107,109	0
4	NA	C	501	1/1	0.89	0.17	63,63,63,63	0
5	NAG	B	502	14/15	0.90	0.32	96,106,109,112	0
5	NAG	A	502	14/15	0.91	0.19	47,51,60,62	0
6	QEL	B	1	24/24	0.95	0.20	31,40,48,58	0
6	QEL	D	2	24/24	0.95	0.16	48,56,61,63	0
4	NA	A	501	1/1	0.96	0.14	48,48,48,48	0

The following is a graphical depiction of the model fit to experimental electron density of all instances of the Ligand of Interest. In addition, ligands with molecular weight > 250 and outliers as shown on the geometry validation Tables will also be included. Each fit is shown from different orientation to approximate a three-dimensional view.





6.5 Other polymers [i](#)

There are no such residues in this entry.