



Full wwPDB X-ray Structure Validation Report ⓘ

May 26, 2020 – 08:58 am BST

PDB ID : 3QFC
Title : Crystal Structure of Human NADPH-Cytochrome P450 (V492E mutant)
Authors : Xia, C.; Marohnic, C.; Panda, S.P.; Masters, B.S.; Kim, J.-J.P.
Deposited on : 2011-01-21
Resolution : 1.80 Å(reported)

This is a Full wwPDB X-ray Structure Validation Report for a publicly released PDB entry.

We welcome your comments at validation@mail.wwpdb.org

A user guide is available at

<https://www.wwpdb.org/validation/2017/XrayValidationReportHelp>

with specific help available everywhere you see the ⓘ symbol.

The following versions of software and data (see [references ⓘ](#)) were used in the production of this report:

MolProbity : 4.02b-467
Mogul : 1.8.5 (274361), CSD as541be (2020)
Xtriage (Phenix) : 1.13
EDS : 2.11
buster-report : 1.1.7 (2018)
Percentile statistics : 20191225.v01 (using entries in the PDB archive December 25th 2019)
Refmac : 5.8.0158
CCP4 : 7.0.044 (Gargrove)
Ideal geometry (proteins) : Engh & Huber (2001)
Ideal geometry (DNA, RNA) : Parkinson et al. (1996)
Validation Pipeline (wwPDB-VP) : 2.11

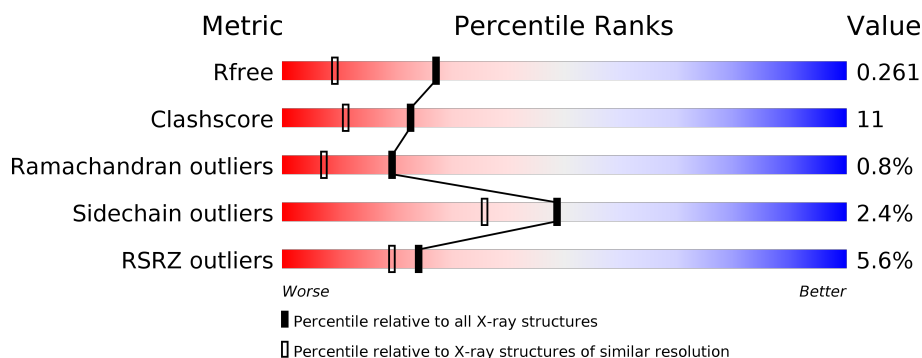
1 Overall quality at a glance

The following experimental techniques were used to determine the structure:

X-RAY DIFFRACTION

The reported resolution of this entry is 1.80 Å.

Percentile scores (ranging between 0-100) for global validation metrics of the entry are shown in the following graphic. The table shows the number of entries on which the scores are based.



Metric	Whole archive (#Entries)	Similar resolution (#Entries, resolution range(Å))
R_{free}	130704	5950 (1.80-1.80)
Clashscore	141614	6793 (1.80-1.80)
Ramachandran outliers	138981	6697 (1.80-1.80)
Sidechain outliers	138945	6696 (1.80-1.80)
RSRZ outliers	127900	5850 (1.80-1.80)

The table below summarises the geometric issues observed across the polymeric chains and their fit to the electron density. The red, orange, yellow and green segments on the lower bar indicate the fraction of residues that contain outliers for ≥ 3 , 2, 1 and 0 types of geometric quality criteria respectively. A grey segment represents the fraction of residues that are not modelled. The numeric value for each fraction is indicated below the corresponding segment, with a dot representing fractions $\leq 5\%$. The upper red bar (where present) indicates the fraction of residues that have poor fit to the electron density. The numeric value is given above the bar.

Mol	Chain	Length	Quality of chain
1	A	618	<div> <div>2%</div> <div>81%</div> <div>16%</div> <div>••</div> </div>
1	B	618	<div> <div>9%</div> <div>66%</div> <div>29%</div> <div>••</div> </div>

2 Entry composition

There are 6 unique types of molecules in this entry. The entry contains 10573 atoms, of which 0 are hydrogens and 0 are deuteriums.

In the tables below, the ZeroOcc column contains the number of atoms modelled with zero occupancy, the AltConf column contains the number of residues with at least one atom in alternate conformation and the Trace column contains the number of residues modelled with at most 2 atoms.

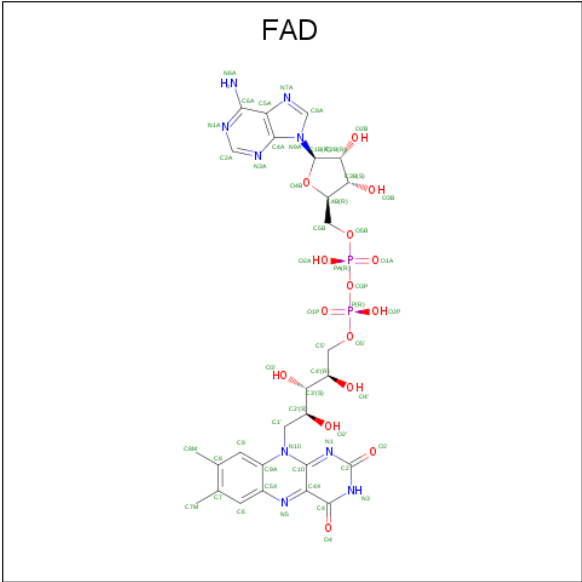
- Molecule 1 is a protein called NADPH–cytochrome P450 reductase.

Mol	Chain	Residues	Atoms					ZeroOcc	AltConf	Trace
1	A	607	Total	C	N	O	S	0	0	0
			4844	3064	837	920	23			
1	B	595	Total	C	N	O	S	0	0	0
			4761	3014	822	902	23			

There are 14 discrepancies between the modelled and reference sequences:

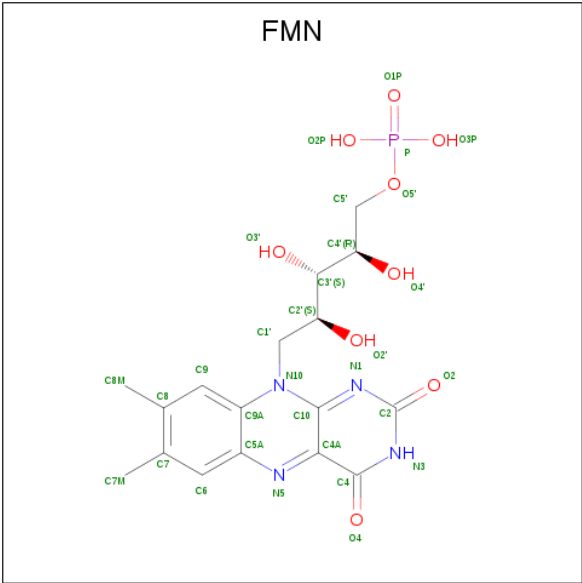
Chain	Residue	Modelled	Actual	Comment	Reference
A	63	GLY	-	EXPRESSION TAG	UNP P16435
A	64	SER	-	EXPRESSION TAG	UNP P16435
A	65	HIS	-	EXPRESSION TAG	UNP P16435
A	66	MET	-	EXPRESSION TAG	UNP P16435
A	228	LEU	PRO	SEE REMARK 999	UNP P16435
A	492	GLU	VAL	ENGINEERED MUTATION	UNP P16435
A	503	VAL	ALA	SEE REMARK 999	UNP P16435
B	63	GLY	-	EXPRESSION TAG	UNP P16435
B	64	SER	-	EXPRESSION TAG	UNP P16435
B	65	HIS	-	EXPRESSION TAG	UNP P16435
B	66	MET	-	EXPRESSION TAG	UNP P16435
B	228	LEU	PRO	SEE REMARK 999	UNP P16435
B	492	GLU	VAL	ENGINEERED MUTATION	UNP P16435
B	503	VAL	ALA	SEE REMARK 999	UNP P16435

- Molecule 2 is FLAVIN-ADENINE DINUCLEOTIDE (three-letter code: FAD) (formula: $C_{27}H_{33}N_9O_{15}P_2$).



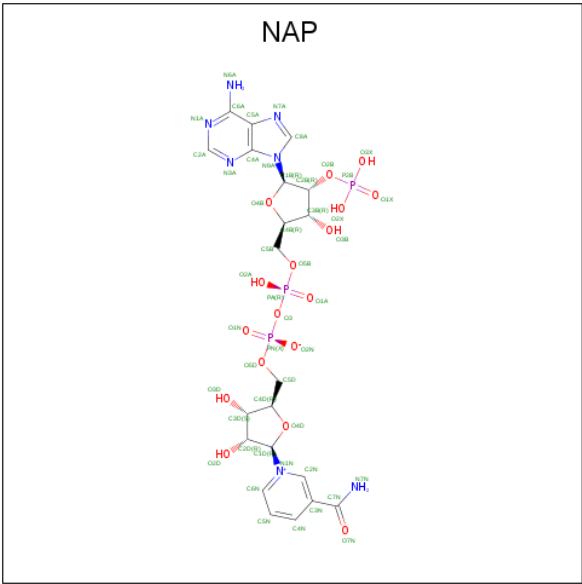
Mol	Chain	Residues	Atoms					ZeroOcc	AltConf
2	A	1	Total	C	N	O	P	0	0
			53	27	9	15	2		
2	B	1	Total	C	N	O	P	0	0
			53	27	9	15	2		

- Molecule 3 is FLAVIN MONONUCLEOTIDE (three-letter code: FMN) (formula: C₁₇H₂₁N₄O₉P).



Mol	Chain	Residues	Atoms					ZeroOcc	AltConf
3	A	1	Total	C	N	O	P	0	0
			31	17	4	9	1		
3	B	1	Total	C	N	O	P	0	0
			31	17	4	9	1		

- Molecule 4 is NADP NICOTINAMIDE-ADENINE-DINUCLEOTIDE PHOSPHATE (three-letter code: NAP) (formula: C₂₁H₂₈N₇O₁₇P₃).



Mol	Chain	Residues	Atoms					ZeroOcc	AltConf
4	A	1	Total	C	N	O	P	0	0
			31	10	5	13	3		
4	B	1	Total	C	N	O	P	0	0
			48	21	7	17	3		

- Molecule 5 is CALCIUM ION (three-letter code: CA) (formula: Ca).

Mol	Chain	Residues	Atoms		ZeroOcc	AltConf
5	A	1	Total	Ca	0	0
			1	1		

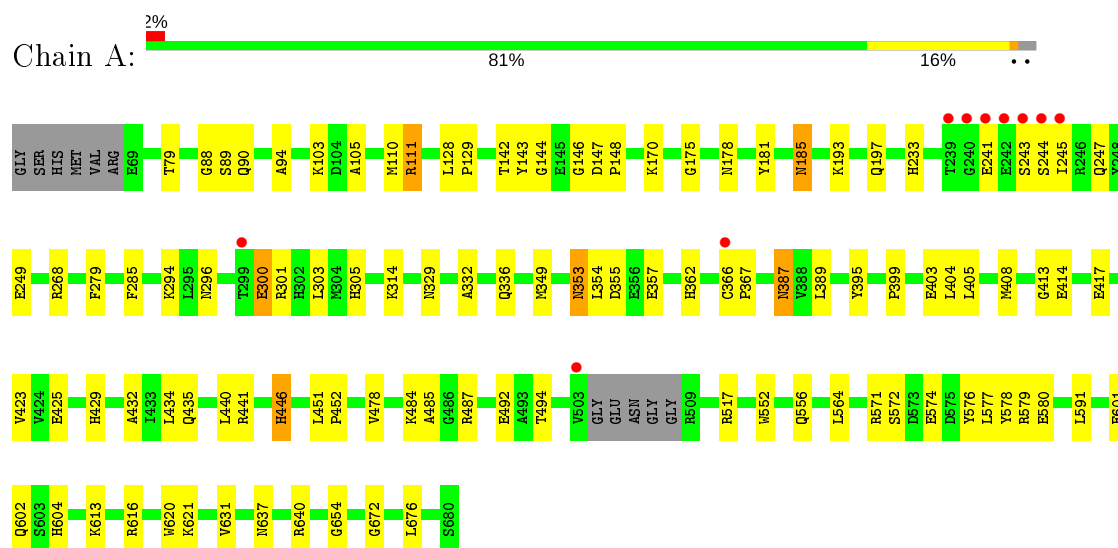
- Molecule 6 is water.

Mol	Chain	Residues	Atoms		ZeroOcc	AltConf
6	A	567	Total	O	0	0
			567	567		
6	B	153	Total	O	0	0
			153	153		

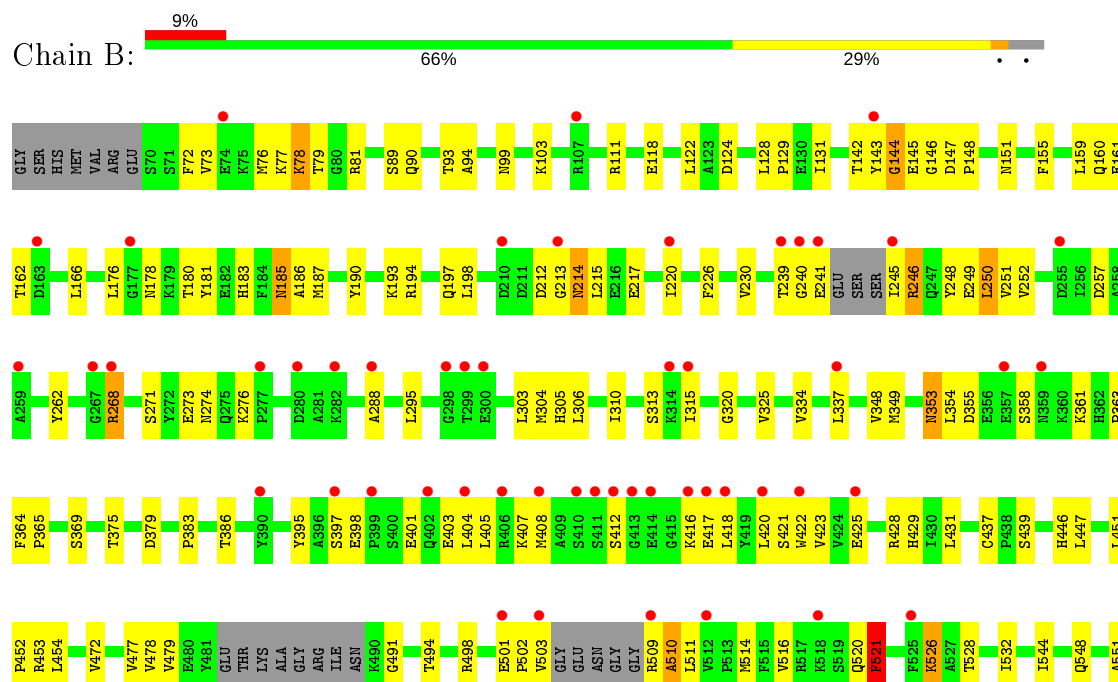
3 Residue-property plots

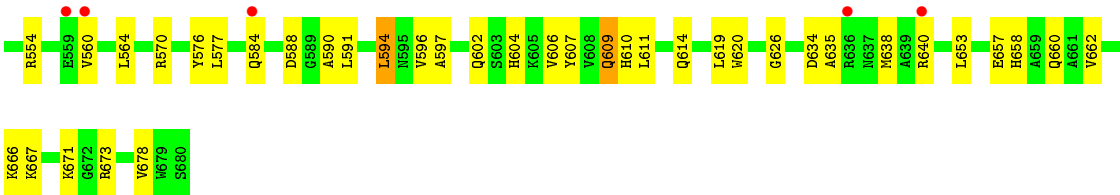
These plots are drawn for all protein, RNA and DNA chains in the entry. The first graphic for a chain summarises the proportions of the various outlier classes displayed in the second graphic. The second graphic shows the sequence view annotated by issues in geometry and electron density. Residues are color-coded according to the number of geometric quality criteria for which they contain at least one outlier: green = 0, yellow = 1, orange = 2 and red = 3 or more. A red dot above a residue indicates a poor fit to the electron density ($RSRZ > 2$). Stretches of 2 or more consecutive residues without any outlier are shown as a green connector. Residues present in the sample, but not in the model, are shown in grey.

• Molecule 1: NADPH-cytochrome P450 reductase



• Molecule 1: NADPH-cytochrome P450 reductase





4 Data and refinement statistics

Property	Value	Source
Space group	P 21 21 21	Depositor
Cell constants a, b, c, α , β , γ	70.72Å 118.51Å 155.36Å 90.00° 90.00° 90.00°	Depositor
Resolution (Å)	45.42 – 1.80 45.42 – 1.80	Depositor EDS
% Data completeness (in resolution range)	93.1 (45.42-1.80) 93.0 (45.42-1.80)	Depositor EDS
R_{merge}	(Not available)	Depositor
R_{sym}	0.05	Depositor
$\langle I/\sigma(I) \rangle$ ¹	2.98 (at 1.79Å)	Xtriage
Refinement program	CNS 1.2	Depositor
R, R_{free}	0.232 , 0.265 0.228 , 0.261	Depositor DCC
R_{free} test set	5702 reflections (5.03%)	wwPDB-VP
Wilson B-factor (Å ²)	24.6	Xtriage
Anisotropy	0.116	Xtriage
Bulk solvent k_{sol} (e/Å ³), B_{sol} (Å ²)	0.35 , 46.4	EDS
L-test for twinning ²	$\langle L \rangle = 0.49$, $\langle L^2 \rangle = 0.33$	Xtriage
Estimated twinning fraction	No twinning to report.	Xtriage
F_o, F_c correlation	0.94	EDS
Total number of atoms	10573	wwPDB-VP
Average B, all atoms (Å ²)	33.0	wwPDB-VP

Xtriage's analysis on translational NCS is as follows: *The largest off-origin peak in the Patterson function is 5.87% of the height of the origin peak. No significant pseudotranslation is detected.*

¹Intensities estimated from amplitudes.

²Theoretical values of $\langle |L| \rangle$, $\langle L^2 \rangle$ for acentric reflections are 0.5, 0.333 respectively for untwinned datasets, and 0.375, 0.2 for perfectly twinned datasets.

5 Model quality [i](#)

5.1 Standard geometry [i](#)

Bond lengths and bond angles in the following residue types are not validated in this section: FMN, CA, NAP, FAD

The Z score for a bond length (or angle) is the number of standard deviations the observed value is removed from the expected value. A bond length (or angle) with $|Z| > 5$ is considered an outlier worth inspection. RMSZ is the root-mean-square of all Z scores of the bond lengths (or angles).

Mol	Chain	Bond lengths		Bond angles	
		RMSZ	$\# Z > 5$	RMSZ	$\# Z > 5$
1	A	0.34	0/4953	0.60	1/6704 (0.0%)
1	B	0.28	0/4868	0.51	0/6587
All	All	0.31	0/9821	0.56	1/13291 (0.0%)

There are no bond length outliers.

All (1) bond angle outliers are listed below:

Mol	Chain	Res	Type	Atoms	Z	Observed(°)	Ideal(°)
1	A	88	GLY	N-CA-C	-5.13	100.27	113.10

There are no chirality outliers.

There are no planarity outliers.

5.2 Too-close contacts [i](#)

In the following table, the Non-H and H(model) columns list the number of non-hydrogen atoms and hydrogen atoms in the chain respectively. The H(added) column lists the number of hydrogen atoms added and optimized by MolProbity. The Clashes column lists the number of clashes within the asymmetric unit, whereas Symm-Clashes lists symmetry related clashes.

Mol	Chain	Non-H	H(model)	H(added)	Clashes	Symm-Clashes
1	A	4844	0	4699	80	0
1	B	4761	0	4621	146	0
2	A	53	0	31	0	0
2	B	53	0	31	0	0
3	A	31	0	19	0	0
3	B	31	0	19	1	0
4	A	31	0	11	0	0
4	B	48	0	25	1	0

Continued on next page...

Continued from previous page...

Mol	Chain	Non-H	H(model)	H(added)	Clashes	Symm-Clashes
5	A	1	0	0	0	0
6	A	567	0	0	8	0
6	B	153	0	0	3	0
All	All	10573	0	9456	221	0

The all-atom clashscore is defined as the number of clashes found per 1000 atoms (including hydrogen atoms). The all-atom clashscore for this structure is 11.

All (221) close contacts within the same asymmetric unit are listed below, sorted by their clash magnitude.

Atom-1	Atom-2	Interatomic distance (Å)	Clash overlap (Å)
1:B:412:SER:HA	1:B:416:LYS:HD2	1.33	1.04
1:B:479:VAL:H	1:B:494:THR:HG21	1.33	0.93
1:B:180:THR:HA	1:B:640:ARG:HH21	1.34	0.92
1:B:315:ILE:HD11	1:B:516:VAL:HG23	1.55	0.88
1:A:300:GLU:HG3	1:A:301:ARG:H	1.38	0.88
1:B:609:GLN:HE22	4:B:753:NAP:H2A	1.38	0.87
1:A:405:LEU:HA	1:A:408:MET:HE3	1.57	0.87
1:B:408:MET:HE3	1:B:418:LEU:HD23	1.56	0.87
1:A:435:GLN:HE21	1:A:487:ARG:HH11	1.27	0.82
1:B:607:TYR:H	1:B:610:HIS:HD2	1.22	0.82
1:A:89:SER:HB2	1:A:94:ALA:HB3	1.66	0.77
1:A:637:ASN:ND2	1:A:640:ARG:HH22	1.82	0.77
1:B:412:SER:HA	1:B:416:LYS:CD	2.13	0.76
1:B:502:PRO:O	1:B:503:VAL:HG23	1.84	0.76
1:A:247:GLN:HE21	1:A:353:ASN:HD21	1.32	0.76
1:B:325:VAL:HG12	1:B:514:MET:HB3	1.68	0.76
1:B:89:SER:HB2	1:B:94:ALA:HB3	1.66	0.75
1:A:637:ASN:HD22	1:A:640:ARG:HH22	1.34	0.75
1:B:250:LEU:HD13	1:B:251:VAL:N	2.03	0.73
1:B:609:GLN:H	1:B:609:GLN:HE21	1.36	0.72
1:A:404:LEU:HD22	1:B:274:ASN:HD21	1.55	0.71
1:A:621:LYS:HD2	6:A:1061:HOH:O	1.91	0.71
1:B:397:SER:HB2	1:B:439:SER:HB2	1.72	0.70
1:B:361:LYS:HA	1:B:361:LYS:HE2	1.73	0.70
1:B:353:ASN:HD22	1:B:354:LEU:N	1.89	0.70
1:B:310:ILE:HD13	1:B:472:VAL:HG23	1.74	0.69
1:A:404:LEU:HG	1:A:408:MET:HE2	1.75	0.69
1:A:435:GLN:NE2	1:A:487:ARG:HH11	1.90	0.68
1:B:240:GLY:O	1:B:241:GLU:HB2	1.92	0.68
1:B:194:ARG:HH11	1:B:197:GLN:NE2	1.92	0.68

Continued on next page...

Continued from previous page...

Atom-1	Atom-2	Interatomic distance (Å)	Clash overlap (Å)
1:A:429:HIS:HD2	1:A:432:ALA:H	1.42	0.67
1:B:180:THR:HG22	1:B:640:ARG:NH2	2.09	0.67
1:B:509:ARG:O	1:B:511:LEU:HG	1.94	0.66
1:B:81:ARG:HD3	1:B:111:ARG:HB3	1.77	0.66
1:B:268:ARG:HB3	1:B:271:SER:HB3	1.75	0.66
1:B:544:ILE:O	1:B:548:GLN:HG3	1.95	0.66
1:B:379:ASP:HB3	1:B:452:PRO:HG2	1.78	0.65
1:A:440:LEU:O	1:A:441:ARG:HD3	1.97	0.64
1:B:313:SER:OG	1:B:315:ILE:HG22	1.97	0.64
1:B:671:LYS:NZ	1:B:673:ARG:HH11	1.96	0.63
1:B:607:TYR:H	1:B:610:HIS:CD2	2.10	0.63
1:A:362:HIS:CD2	1:A:366:CYS:SG	2.92	0.63
1:B:478:VAL:HA	1:B:494:THR:OG1	1.99	0.62
1:B:245:ILE:O	1:B:245:ILE:HG13	1.99	0.62
1:B:657:GLU:H	1:B:660:GLN:HE21	1.44	0.62
1:A:245:ILE:N	1:A:245:ILE:HD12	2.13	0.62
1:A:429:HIS:CD2	1:A:432:ALA:H	2.18	0.62
1:A:616:ARG:HD2	6:A:57:HOH:O	1.99	0.62
1:B:183:HIS:HB3	1:B:186:ALA:HB2	1.82	0.61
1:B:78:LYS:HD3	1:B:78:LYS:O	2.00	0.61
1:A:305:HIS:HD2	1:A:578:TYR:OH	1.84	0.61
1:B:609:GLN:NE2	1:B:609:GLN:H	1.97	0.61
1:B:178:ASN:OD1	1:B:212:ASP:HB2	2.01	0.61
1:A:399:PRO:O	1:A:403:GLU:HG3	2.01	0.61
1:B:90:GLN:HB2	1:B:143:TYR:CZ	2.36	0.60
1:A:425:GLU:HG3	1:A:484:LYS:NZ	2.16	0.60
1:A:414:GLU:CD	1:B:276:LYS:HE2	2.22	0.60
1:A:105:ALA:HB3	6:A:992:HOH:O	2.01	0.59
1:A:353:ASN:ND2	1:A:355:ASP:H	2.00	0.59
1:B:564:LEU:HD12	1:B:564:LEU:N	2.16	0.59
1:A:613:LYS:HE2	6:A:1192:HOH:O	2.02	0.59
1:B:93:THR:HG21	1:B:215:LEU:HD23	1.84	0.59
1:B:353:ASN:ND2	1:B:355:ASP:H	2.00	0.59
1:B:355:ASP:OD2	1:B:358:SER:HB2	2.03	0.59
1:B:401:GLU:OE2	1:B:437:CYS:HA	2.04	0.58
1:A:193:LYS:O	1:A:197:GLN:HG3	2.04	0.57
1:B:160:GLN:HG3	1:B:161:GLU:OE2	2.04	0.57
1:B:239:THR:HG23	1:B:240:GLY:H	1.70	0.57
1:A:571:ARG:HH12	1:A:601:GLU:HA	1.70	0.57
1:A:314:LYS:HB3	1:A:314:LYS:NZ	2.19	0.57
1:A:485:ALA:HB3	6:A:814:HOH:O	2.04	0.57

Continued on next page...

Continued from previous page...

Atom-1	Atom-2	Interatomic distance (Å)	Clash overlap (Å)
1:B:250:LEU:HD13	1:B:251:VAL:H	1.68	0.57
1:B:597:ALA:HB1	1:B:606:VAL:HG12	1.87	0.57
1:A:247:GLN:HE21	1:A:353:ASN:ND2	2.02	0.57
1:B:662:VAL:O	1:B:666:LYS:HG2	2.05	0.57
1:B:310:ILE:HD12	1:B:315:ILE:HG23	1.86	0.57
1:B:403:GLU:O	1:B:407:LYS:HG3	2.05	0.56
1:B:610:HIS:O	1:B:614:GLN:HG3	2.05	0.56
1:B:159:LEU:HB3	1:B:194:ARG:HG2	1.88	0.56
1:B:160:GLN:HB3	1:B:190:TYR:OH	2.06	0.56
1:A:353:ASN:HD22	1:A:354:LEU:N	2.03	0.56
1:B:609:GLN:N	1:B:609:GLN:HE21	2.04	0.56
1:B:303:LEU:HD22	1:B:577:LEU:HD21	1.88	0.55
1:B:288:ALA:HA	1:B:510:ALA:O	2.07	0.55
1:A:294:LYS:HE3	1:A:296:ASN:O	2.06	0.55
1:B:239:THR:HG23	1:B:240:GLY:N	2.21	0.54
1:B:303:LEU:HD12	1:B:303:LEU:N	2.22	0.54
1:A:413:GLY:O	1:A:417:GLU:HG2	2.08	0.54
1:A:425:GLU:HG3	1:A:484:LYS:CE	2.37	0.54
1:B:142:THR:CG2	1:B:146:GLY:HA2	2.38	0.54
1:A:389:LEU:HD11	1:A:423:VAL:HG21	1.89	0.54
1:B:262:TYR:CD2	1:B:365:PRO:HB3	2.42	0.54
1:A:362:HIS:CG	1:A:366:CYS:SG	3.01	0.54
1:A:395:TYR:OH	1:A:446:HIS:HD2	1.91	0.54
1:B:671:LYS:HZ1	1:B:673:ARG:HH11	1.54	0.54
1:B:491:GLY:HA3	1:B:494:THR:HG22	1.89	0.54
1:B:304:MET:HG3	1:B:306:LEU:HD11	1.89	0.54
1:B:249:GLU:HB3	1:B:354:LEU:HD21	1.89	0.53
1:A:366:CYS:HB2	1:A:367:PRO:HA	1.88	0.53
1:B:303:LEU:CD2	1:B:577:LEU:HD21	2.38	0.53
1:B:401:GLU:O	1:B:405:LEU:HG	2.09	0.53
1:B:295:LEU:HD21	1:B:305:HIS:HB2	1.91	0.52
1:A:353:ASN:HD22	1:A:355:ASP:H	1.57	0.52
1:A:572:SER:O	1:A:579:ARG:NH1	2.43	0.52
1:B:273:GLU:HG2	6:B:807:HOH:O	2.09	0.52
1:A:170:LYS:NZ	1:A:233:HIS:HE1	2.08	0.51
1:B:220:ILE:HD11	1:B:386:THR:HG21	1.92	0.51
1:A:332:ALA:O	1:A:336:GLN:HG3	2.11	0.51
1:B:145:GLU:OE1	1:B:520:GLN:HG2	2.10	0.51
1:B:348:VAL:HA	1:B:369:SER:HA	1.93	0.51
1:B:315:ILE:HD11	1:B:516:VAL:CG2	2.36	0.50
1:A:404:LEU:CD2	1:B:274:ASN:HD21	2.23	0.50

Continued on next page...

Continued from previous page...

Atom-1	Atom-2	Interatomic distance (Å)	Clash overlap (Å)
1:B:268:ARG:HA	1:B:268:ARG:HE	1.76	0.50
1:A:147:ASP:HB3	1:A:148:PRO:HD2	1.94	0.50
1:B:144:GLY:H	3:B:751:FMN:H6	1.77	0.50
1:A:303:LEU:HD22	1:A:577:LEU:HD21	1.94	0.49
1:B:358:SER:O	1:B:361:LYS:HE3	2.12	0.49
1:A:564:LEU:N	1:A:564:LEU:HD12	2.28	0.48
1:A:300:GLU:HG3	1:A:301:ARG:N	2.17	0.48
1:A:631:VAL:HB	1:A:676:LEU:HD23	1.94	0.48
1:B:99:ASN:O	1:B:103:LYS:HG3	2.13	0.48
1:A:387:ASN:HD22	1:A:387:ASN:H	1.62	0.48
1:B:122:LEU:HG	1:B:155:PHE:CD1	2.48	0.48
1:B:607:TYR:N	1:B:610:HIS:HD2	2.01	0.48
1:B:128:LEU:N	1:B:129:PRO:CD	2.77	0.48
1:B:477:VAL:HG13	1:B:477:VAL:O	2.14	0.47
1:A:672:GLY:HA2	6:A:1032:HOH:O	2.15	0.47
1:A:404:LEU:HG	1:A:408:MET:CE	2.44	0.47
1:B:526:LYS:HD2	1:B:526:LYS:N	2.30	0.47
1:B:337:LEU:HD23	1:B:431:LEU:HD13	1.96	0.47
1:B:602:GLN:HG2	1:B:604:HIS:O	2.15	0.47
1:A:268:ARG:HB2	1:A:268:ARG:NH1	2.29	0.47
1:B:532:ILE:HD13	1:B:619:LEU:HD22	1.96	0.47
1:A:296:ASN:HB2	1:A:574:GLU:O	2.14	0.47
1:A:249:GLU:HB3	1:A:354:LEU:HD21	1.96	0.47
1:B:118:GLU:HB2	1:B:151:ASN:O	2.14	0.47
1:B:214:ASN:ND2	1:B:420:LEU:HD22	2.30	0.46
1:A:435:GLN:HE21	1:A:487:ARG:NH1	2.02	0.46
1:A:640:ARG:NH1	1:A:640:ARG:HB3	2.31	0.46
1:B:337:LEU:HD21	1:B:431:LEU:HB2	1.98	0.46
1:B:78:LYS:HD3	1:B:78:LYS:C	2.36	0.46
1:B:570:ARG:HH11	1:B:570:ARG:HG3	1.79	0.46
1:A:103:LYS:HE2	1:A:247:GLN:OE1	2.16	0.46
1:A:571:ARG:NH1	1:A:601:GLU:HA	2.29	0.46
1:A:602:GLN:HG2	1:A:604:HIS:O	2.16	0.45
1:B:635:ALA:HB2	1:B:678:VAL:HB	1.97	0.45
1:A:414:GLU:OE1	1:B:276:LYS:HE2	2.14	0.45
1:A:110:MET:O	1:A:111:ARG:HD2	2.16	0.45
1:B:526:LYS:HB3	1:B:528:THR:HG22	1.98	0.45
1:B:594:LEU:HD22	1:B:596:VAL:CG2	2.47	0.45
1:B:383:PRO:HB3	1:B:423:VAL:HG12	1.97	0.45
1:B:334:VAL:HG21	1:B:375:THR:OG1	2.17	0.45
1:B:404:LEU:HD23	1:B:404:LEU:C	2.37	0.45

Continued on next page...

Continued from previous page...

Atom-1	Atom-2	Interatomic distance (Å)	Clash overlap (Å)
1:B:422:TRP:CE2	1:B:428:ARG:NH1	2.85	0.45
1:B:304:MET:HG3	1:B:306:LEU:CD1	2.47	0.45
1:B:364:PHE:HB2	1:B:365:PRO:CD	2.47	0.45
1:B:420:LEU:O	1:B:425:GLU:HB2	2.17	0.45
1:B:479:VAL:O	1:B:491:GLY:N	2.44	0.45
1:B:193:LYS:HB3	1:B:193:LYS:NZ	2.32	0.45
1:B:159:LEU:O	1:B:162:THR:HG22	2.17	0.45
1:B:176:LEU:C	1:B:185:ASN:HD21	2.21	0.45
1:B:246:ARG:NH1	1:B:246:ARG:HG2	2.32	0.45
1:A:128:LEU:N	1:A:129:PRO:CD	2.80	0.44
1:A:451:LEU:HA	1:A:452:PRO:HD3	1.89	0.44
1:A:552:TRP:O	1:A:556:GLN:HG2	2.17	0.44
1:B:77:LYS:HG2	1:B:131:ILE:HG12	1.98	0.44
1:A:434:LEU:HD23	1:A:440:LEU:HD23	1.99	0.44
1:A:329:ASN:ND2	1:A:492:GLU:OE2	2.51	0.44
1:B:250:LEU:HD12	1:B:252:VAL:HG23	1.99	0.44
1:B:395:TYR:OH	1:B:446:HIS:HD2	2.00	0.44
1:B:554:ARG:HG2	1:B:560:VAL:HG21	1.99	0.44
1:B:611:LEU:N	1:B:611:LEU:HD12	2.33	0.44
1:B:320:GLY:HA3	1:B:521:PHE:O	2.18	0.44
1:B:551:ALA:HB2	1:B:590:ALA:HB1	1.98	0.44
1:A:90:GLN:HB3	1:A:143:TYR:CZ	2.52	0.43
1:B:73:VAL:O	1:B:77:LYS:HG3	2.18	0.43
1:A:429:HIS:HE1	6:A:855:HOH:O	2.00	0.43
1:B:626:GLY:HA2	1:B:673:ARG:NH2	2.33	0.43
1:B:180:THR:CA	1:B:640:ARG:HH21	2.17	0.43
1:A:620:TRP:CZ2	1:A:654:GLY:HA2	2.53	0.43
1:B:620:TRP:CD1	1:B:653:LEU:HB3	2.54	0.43
1:A:175:GLY:C	1:A:185:ASN:HD21	2.22	0.43
1:B:246:ARG:HG2	1:B:246:ARG:HH11	1.83	0.43
1:A:279:PHE:CG	1:A:285:PHE:HB2	2.54	0.42
1:A:404:LEU:HD13	1:B:274:ASN:HD22	1.84	0.42
1:B:584:GLN:NE2	1:B:588:ASP:OD1	2.52	0.42
1:B:364:PHE:HB2	1:B:365:PRO:HD2	2.00	0.42
1:B:315:ILE:HG23	1:B:315:ILE:O	2.19	0.42
1:B:217:GLU:OE1	1:B:416:LYS:HE3	2.18	0.42
1:B:166:LEU:HG	1:B:198:LEU:HB3	2.02	0.42
1:B:72:PHE:O	1:B:76:MET:HG3	2.19	0.42
1:B:181:TYR:HB3	6:B:705:HOH:O	2.18	0.42
1:B:421:SER:HA	1:B:425:GLU:HB3	2.02	0.42
1:B:226:PHE:O	1:B:230:VAL:HG23	2.20	0.42

Continued on next page...

Continued from previous page...

Atom-1	Atom-2	Interatomic distance (Å)	Clash overlap (Å)
1:A:79:THR:HG22	1:A:357:GLU:CD	2.40	0.41
1:A:517:ARG:HG2	6:A:850:HOH:O	2.20	0.41
1:A:366:CYS:HA	1:A:367:PRO:C	2.41	0.41
1:B:353:ASN:C	1:B:353:ASN:HD22	2.18	0.41
1:A:425:GLU:HG3	1:A:484:LYS:HE3	2.02	0.41
1:B:634:ASP:HB3	1:B:638:MET:HB3	2.02	0.41
1:A:178:ASN:HB3	1:A:181:TYR:HD2	1.85	0.41
1:B:148:PRO:HB3	1:B:187:MET:SD	2.60	0.41
1:B:194:ARG:HH11	1:B:197:GLN:HE22	1.67	0.41
1:B:478:VAL:HG21	1:B:498:ARG:HD2	2.03	0.41
1:B:304:MET:HE1	1:B:498:ARG:HB2	2.03	0.41
1:B:398:GLU:H	1:B:439:SER:CB	2.34	0.41
1:A:142:THR:CG2	1:A:146:GLY:HA2	2.50	0.41
1:B:79:THR:OG1	1:B:81:ARG:HG2	2.21	0.41
1:A:241:GLU:C	1:A:243:SER:H	2.24	0.41
1:B:671:LYS:HE2	1:B:673:ARG:HD3	2.02	0.41
1:B:363:PRO:O	1:B:453:ARG:HD3	2.21	0.41
1:A:111:ARG:HG3	1:A:111:ARG:HH11	1.86	0.40
1:B:501:GLU:HA	1:B:502:PRO:HD3	1.95	0.40
1:B:594:LEU:HD22	1:B:596:VAL:HG23	2.02	0.40
1:B:667:LYS:HG3	6:B:818:HOH:O	2.20	0.40
1:B:72:PHE:CE1	1:B:124:ASP:HB2	2.57	0.40
1:A:478:VAL:HA	1:A:494:THR:HB	2.03	0.40
1:B:248:TYR:CE2	1:B:363:PRO:HD3	2.56	0.40
1:B:416:LYS:HG3	1:B:417:GLU:N	2.35	0.40
1:B:447:LEU:O	1:B:451:LEU:HG	2.22	0.40
1:B:658:HIS:O	1:B:662:VAL:HG23	2.21	0.40

There are no symmetry-related clashes.

5.3 Torsion angles ⓘ

5.3.1 Protein backbone ⓘ

In the following table, the Percentiles column shows the percent Ramachandran outliers of the chain as a percentile score with respect to all X-ray entries followed by that with respect to entries of similar resolution.

The Analysed column shows the number of residues for which the backbone conformation was analysed, and the total number of residues.

Mol	Chain	Analysed	Favoured	Allowed	Outliers	Percentiles	
1	A	603/618 (98%)	584 (97%)	16 (3%)	3 (0%)	29	15
1	B	587/618 (95%)	548 (93%)	33 (6%)	6 (1%)	15	5
All	All	1190/1236 (96%)	1132 (95%)	49 (4%)	9 (1%)	19	7

All (9) Ramachandran outliers are listed below:

Mol	Chain	Res	Type
1	B	144	GLY
1	A	144	GLY
1	B	510	ALA
1	A	244	SER
1	A	300	GLU
1	B	214	ASN
1	B	246	ARG
1	B	521	PHE
1	B	213	GLY

5.3.2 Protein sidechains ⓘ

In the following table, the Percentiles column shows the percent sidechain outliers of the chain as a percentile score with respect to all X-ray entries followed by that with respect to entries of similar resolution.

The Analysed column shows the number of residues for which the sidechain conformation was analysed, and the total number of residues.

Mol	Chain	Analysed	Rotameric	Outliers	Percentiles	
1	A	514/526 (98%)	505 (98%)	9 (2%)	59	48
1	B	507/526 (96%)	491 (97%)	16 (3%)	39	25
All	All	1021/1052 (97%)	996 (98%)	25 (2%)	49	36

All (25) residues with a non-rotameric sidechain are listed below:

Mol	Chain	Res	Type
1	A	111	ARG
1	A	185	ASN
1	A	349	MET
1	A	353	ASN
1	A	387	ASN
1	A	446	HIS
1	A	576	TYR

Continued on next page...

Continued from previous page...

Mol	Chain	Res	Type
1	A	580	GLU
1	A	591	LEU
1	B	78	LYS
1	B	147	ASP
1	B	185	ASN
1	B	250	LEU
1	B	257	ASP
1	B	268	ARG
1	B	349	MET
1	B	353	ASN
1	B	429	HIS
1	B	454	LEU
1	B	521	PHE
1	B	526	LYS
1	B	576	TYR
1	B	591	LEU
1	B	594	LEU
1	B	609	GLN

Some sidechains can be flipped to improve hydrogen bonding and reduce clashes. All (46) such sidechains are listed below:

Mol	Chain	Res	Type
1	A	153	GLN
1	A	185	ASN
1	A	233	HIS
1	A	253	HIS
1	A	274	ASN
1	A	283	ASN
1	A	305	HIS
1	A	329	ASN
1	A	352	ASN
1	A	353	ASN
1	A	362	HIS
1	A	387	ASN
1	A	429	HIS
1	A	435	GLN
1	A	446	HIS
1	A	455	GLN
1	A	470	ASN
1	A	489	ASN
1	A	495	ASN
1	A	555	GLN

Continued on next page...

Continued from previous page...

Mol	Chain	Res	Type
1	A	586	HIS
1	A	628	HIS
1	A	637	ASN
1	A	658	HIS
1	B	160	GLN
1	B	183	HIS
1	B	185	ASN
1	B	197	GLN
1	B	247	GLN
1	B	274	ASN
1	B	329	ASN
1	B	336	GLN
1	B	353	ASN
1	B	387	ASN
1	B	394	GLN
1	B	435	GLN
1	B	446	HIS
1	B	455	GLN
1	B	470	ASN
1	B	495	ASN
1	B	555	GLN
1	B	586	HIS
1	B	595	ASN
1	B	609	GLN
1	B	610	HIS
1	B	660	GLN

5.3.3 RNA ⓘ

There are no RNA molecules in this entry.

5.4 Non-standard residues in protein, DNA, RNA chains ⓘ

There are no non-standard protein/DNA/RNA residues in this entry.

5.5 Carbohydrates ⓘ

There are no carbohydrates in this entry.

5.6 Ligand geometry

Of 7 ligands modelled in this entry, 1 is monoatomic - leaving 6 for Mogul analysis.

In the following table, the Counts columns list the number of bonds (or angles) for which Mogul statistics could be retrieved, the number of bonds (or angles) that are observed in the model and the number of bonds (or angles) that are defined in the Chemical Component Dictionary. The Link column lists molecule types, if any, to which the group is linked. The Z score for a bond length (or angle) is the number of standard deviations the observed value is removed from the expected value. A bond length (or angle) with $|Z| > 2$ is considered an outlier worth inspection. RMSZ is the root-mean-square of all Z scores of the bond lengths (or angles).

Mol	Type	Chain	Res	Link	Bond lengths			Bond angles		
					Counts	RMSZ	# Z > 2	Counts	RMSZ	# Z > 2
3	FMN	B	751	-	31,33,33	2.76	11 (35%)	40,50,50	3.15	14 (35%)
2	FAD	B	752	-	51,58,58	3.23	22 (43%)	60,89,89	3.05	16 (26%)
4	NAP	B	753	-	45,52,52	2.43	16 (35%)	56,80,80	1.41	8 (14%)
4	NAP	A	753	-	27,33,52	2.38	6 (22%)	35,52,80	1.34	5 (14%)
3	FMN	A	751	-	31,33,33	2.83	12 (38%)	40,50,50	3.02	9 (22%)
2	FAD	A	752	-	51,58,58	2.87	21 (41%)	60,89,89	3.00	18 (30%)

In the following table, the Chirals column lists the number of chiral outliers, the number of chiral centers analysed, the number of these observed in the model and the number defined in the Chemical Component Dictionary. Similar counts are reported in the Torsion and Rings columns. '-' means no outliers of that kind were identified.

Mol	Type	Chain	Res	Link	Chirals	Torsions	Rings
3	FMN	B	751	-	-	0/18/18/18	0/3/3/3
2	FAD	B	752	-	-	4/30/50/50	0/6/6/6
4	NAP	B	753	-	-	9/31/67/67	0/5/5/5
4	NAP	A	753	-	-	2/17/37/67	0/3/3/5
3	FMN	A	751	-	-	0/18/18/18	0/3/3/3
2	FAD	A	752	-	-	1/30/50/50	0/6/6/6

All (88) bond length outliers are listed below:

Mol	Chain	Res	Type	Atoms	Z	Observed(Å)	Ideal(Å)
4	B	753	NAP	C4A-N3A	10.82	1.50	1.35
4	A	753	NAP	C4A-N3A	10.18	1.49	1.35
2	B	752	FAD	C4X-C10	9.29	1.48	1.38
2	B	752	FAD	C9A-N10	8.68	1.50	1.38
3	A	751	FMN	C9A-N10	8.22	1.49	1.38
2	A	752	FAD	C4X-C10	8.05	1.46	1.38

Continued on next page...

Continued from previous page...

Mol	Chain	Res	Type	Atoms	Z	Observed(Å)	Ideal(Å)
3	B	751	FMN	C9A-N10	7.96	1.49	1.38
2	A	752	FAD	C9A-N10	7.61	1.48	1.38
2	B	752	FAD	C4A-N3A	7.59	1.46	1.35
2	A	752	FAD	C4A-N3A	7.00	1.45	1.35
2	B	752	FAD	C4-N3	6.40	1.44	1.33
3	A	751	FMN	C4A-C10	6.26	1.45	1.38
2	A	752	FAD	C4-N3	6.14	1.43	1.33
2	B	752	FAD	C10-N1	6.01	1.41	1.33
3	B	751	FMN	C4A-C10	5.80	1.44	1.38
2	B	752	FAD	C5'-C4'	-5.80	1.43	1.51
3	A	751	FMN	C4A-N5	5.60	1.41	1.33
3	B	751	FMN	C4A-N5	5.46	1.41	1.33
2	A	752	FAD	C10-N1	5.36	1.40	1.33
2	B	752	FAD	C4X-N5	5.32	1.40	1.33
3	A	751	FMN	C4-N3	4.28	1.40	1.33
2	A	752	FAD	C5'-C4'	-4.28	1.45	1.51
3	B	751	FMN	C4-N3	4.27	1.40	1.33
2	A	752	FAD	C4X-N5	4.22	1.39	1.33
2	A	752	FAD	C2'-C3'	4.17	1.61	1.53
2	B	752	FAD	C2'-C3'	4.16	1.61	1.53
4	B	753	NAP	C2D-C1D	3.91	1.59	1.53
2	A	752	FAD	C2A-N3A	3.76	1.38	1.32
4	B	753	NAP	C6N-N1N	3.72	1.44	1.35
2	B	752	FAD	C2A-N3A	3.70	1.38	1.32
2	B	752	FAD	C9A-C5X	3.64	1.49	1.42
3	B	751	FMN	C10-N1	3.64	1.37	1.33
2	A	752	FAD	C9A-C5X	3.55	1.49	1.42
2	B	752	FAD	C8-C7	3.54	1.49	1.40
3	B	751	FMN	C8-C7	3.53	1.49	1.40
4	A	753	NAP	P2B-O1X	3.53	1.61	1.50
2	B	752	FAD	C6-C5X	3.45	1.47	1.41
4	B	753	NAP	C4N-C3N	3.43	1.45	1.39
2	A	752	FAD	C8-C7	3.41	1.49	1.40
3	A	751	FMN	C9-C9A	3.37	1.47	1.40
3	A	751	FMN	C8-C7	3.34	1.49	1.40
3	A	751	FMN	C10-N1	3.27	1.37	1.33
2	A	752	FAD	O2'-C2'	3.27	1.50	1.43
4	B	753	NAP	O4D-C1D	3.25	1.45	1.41
4	B	753	NAP	C2N-N1N	3.24	1.38	1.35
2	B	752	FAD	C4-C4X	3.22	1.46	1.41
2	B	752	FAD	C5X-N5	3.08	1.40	1.35
4	B	753	NAP	O2D-C2D	3.05	1.50	1.43

Continued on next page...

Continued from previous page...

Mol	Chain	Res	Type	Atoms	Z	Observed(Å)	Ideal(Å)
4	B	753	NAP	P2B-O1X	3.05	1.60	1.50
3	B	751	FMN	C9-C9A	3.04	1.46	1.40
2	B	752	FAD	O2'-C2'	2.89	1.49	1.43
2	B	752	FAD	O4B-C1B	2.88	1.45	1.41
2	B	752	FAD	C8A-N7A	2.83	1.39	1.34
3	B	751	FMN	C1'-N10	-2.80	1.45	1.48
2	A	752	FAD	C5X-N5	2.79	1.40	1.35
2	B	752	FAD	C1'-N10	2.75	1.51	1.48
2	B	752	FAD	PA-O5B	-2.75	1.48	1.59
3	B	751	FMN	C9A-C5A	2.72	1.48	1.42
3	A	751	FMN	C6-C5A	2.69	1.46	1.41
2	A	752	FAD	C6-C5X	2.64	1.46	1.41
4	B	753	NAP	P2B-O2B	2.63	1.64	1.59
4	B	753	NAP	PA-O5B	-2.63	1.48	1.59
4	A	753	NAP	PA-O5B	-2.60	1.48	1.59
2	B	752	FAD	C6-C7	2.59	1.44	1.37
3	A	751	FMN	C4-C4A	2.59	1.45	1.41
4	B	753	NAP	C5A-C4A	2.58	1.47	1.40
3	A	751	FMN	C9A-C5A	2.57	1.47	1.42
3	A	751	FMN	C1'-N10	-2.55	1.45	1.48
2	A	752	FAD	O4B-C1B	2.53	1.44	1.41
3	B	751	FMN	C4-C4A	2.45	1.45	1.41
4	B	753	NAP	C2A-N3A	2.42	1.36	1.32
2	B	752	FAD	P-O5'	-2.41	1.49	1.59
2	A	752	FAD	C4-C4X	2.41	1.45	1.41
2	A	752	FAD	C6-C7	2.37	1.43	1.37
2	A	752	FAD	PA-O5B	-2.34	1.49	1.59
4	B	753	NAP	C5D-C4D	-2.32	1.44	1.51
4	B	753	NAP	C2A-N1A	2.30	1.38	1.33
3	B	751	FMN	O4'-C4'	2.29	1.48	1.43
4	B	753	NAP	PN-O5D	-2.28	1.50	1.59
4	B	753	NAP	C2D-C3D	2.26	1.59	1.53
4	A	753	NAP	C5A-C4A	2.24	1.46	1.40
2	A	752	FAD	C8A-N7A	2.23	1.38	1.34
2	B	752	FAD	C9-C9A	2.21	1.45	1.40
2	A	752	FAD	C1'-N10	2.13	1.50	1.48
3	A	751	FMN	C8M-C8	2.09	1.55	1.51
2	A	752	FAD	P-O5'	-2.08	1.50	1.59
4	A	753	NAP	C2A-N3A	2.06	1.35	1.32
4	A	753	NAP	C2A-N1A	2.04	1.37	1.33

All (70) bond angle outliers are listed below:

Mol	Chain	Res	Type	Atoms	Z	Observed(°)	Ideal(°)
2	B	752	FAD	C4-N3-C2	15.62	128.33	115.14
2	A	752	FAD	C4-N3-C2	15.28	128.04	115.14
3	B	751	FMN	C4-N3-C2	12.03	125.30	115.14
3	A	751	FMN	C4-N3-C2	11.42	124.79	115.14
3	B	751	FMN	C10-C4A-N5	7.81	126.66	121.26
3	B	751	FMN	C4-C4A-C10	-7.77	114.81	119.95
3	A	751	FMN	C10-C4A-N5	7.69	126.58	121.26
2	B	752	FAD	C1'-N10-C9A	7.42	124.14	118.29
3	A	751	FMN	C4-C4A-C10	-7.37	115.08	119.95
2	A	752	FAD	C1'-N10-C9A	7.05	123.84	118.29
2	A	752	FAD	C4X-C4-N3	-6.91	113.97	123.43
2	A	752	FAD	C10-C4X-N5	6.83	125.98	121.26
2	B	752	FAD	C4X-C4-N3	-6.80	114.12	123.43
2	B	752	FAD	C10-C4X-N5	6.11	125.49	121.26
2	B	752	FAD	C2A-N1A-C6A	5.36	127.92	118.75
2	A	752	FAD	C2A-N1A-C6A	5.21	127.67	118.75
4	B	753	NAP	C2D-C3D-C4D	4.66	111.71	102.64
3	B	751	FMN	C4A-C4-N3	-4.43	117.38	123.43
3	A	751	FMN	C4A-C4-N3	-4.37	117.45	123.43
2	A	752	FAD	N3A-C2A-N1A	-4.28	121.98	128.68
2	B	752	FAD	N3A-C2A-N1A	-4.28	121.99	128.68
3	A	751	FMN	C4A-C10-N10	-3.99	116.21	120.30
3	B	751	FMN	C4A-C10-N10	-3.77	116.42	120.30
3	B	751	FMN	C6-C5A-N5	-3.71	114.96	119.05
3	A	751	FMN	C6-C5A-N5	-3.54	115.15	119.05
2	B	752	FAD	C4-C4X-C10	-3.50	117.64	119.95
2	B	752	FAD	C1'-N10-C10	-3.44	115.33	118.41
4	A	753	NAP	C4A-C5A-N7A	3.39	112.93	109.40
4	B	753	NAP	C4A-C5A-N7A	3.38	112.92	109.40
3	A	751	FMN	C1'-N10-C10	3.31	121.37	118.41
2	B	752	FAD	P-O3P-PA	-3.16	122.00	132.83
2	B	752	FAD	O2'-C2'-C1'	3.15	117.17	109.59
2	B	752	FAD	C1B-N9A-C4A	-3.10	121.19	126.64
4	B	753	NAP	PN-O3-PA	-3.10	122.18	132.83
4	A	753	NAP	N3A-C2A-N1A	-3.07	123.88	128.68
2	A	752	FAD	O2'-C2'-C1'	3.05	116.94	109.59
4	B	753	NAP	N3A-C2A-N1A	-3.03	123.94	128.68
3	B	751	FMN	C5A-C9A-N10	-3.01	115.53	117.72
3	A	751	FMN	C5A-C9A-N10	-2.97	115.56	117.72
2	A	752	FAD	C1B-N9A-C4A	-2.92	121.51	126.64
3	B	751	FMN	C9A-C5A-N5	2.77	126.69	122.36
3	A	751	FMN	C9A-C5A-N5	2.77	126.69	122.36
2	B	752	FAD	C5X-C9A-N10	-2.72	115.75	117.72

Continued on next page...

Continued from previous page...

Mol	Chain	Res	Type	Atoms	Z	Observed(°)	Ideal(°)
4	A	753	NAP	O2N-PN-O3	2.68	113.63	104.64
2	A	752	FAD	C5X-C9A-N10	-2.67	115.78	117.72
2	A	752	FAD	C1'-N10-C10	-2.61	116.07	118.41
2	A	752	FAD	C4-C4X-C10	-2.51	118.29	119.95
2	A	752	FAD	C4-C4X-N5	-2.51	115.73	118.60
3	B	751	FMN	P-O5'-C5'	2.45	125.06	118.30
4	B	753	NAP	C2A-N1A-C6A	2.42	122.89	118.75
2	A	752	FAD	O5'-C5'-C4'	2.38	115.72	109.36
4	B	753	NAP	O4D-C1D-C2D	2.37	110.39	106.93
4	A	753	NAP	C2A-N1A-C6A	2.37	122.80	118.75
2	B	752	FAD	C4X-C10-N10	-2.35	117.88	120.30
2	B	752	FAD	O5'-C5'-C4'	2.34	115.62	109.36
4	B	753	NAP	O3D-C3D-C4D	-2.34	104.28	111.05
4	A	753	NAP	PA-O3-PN	-2.33	124.81	132.83
3	B	751	FMN	C1'-N10-C10	2.30	120.47	118.41
2	A	752	FAD	P-O3P-PA	-2.26	125.08	132.83
3	B	751	FMN	C1'-N10-C9A	2.24	120.06	118.29
4	B	753	NAP	C6N-N1N-C2N	-2.24	119.93	121.97
2	A	752	FAD	C4X-C10-N10	-2.22	118.02	120.30
2	B	752	FAD	C5A-C6A-N1A	-2.22	115.33	120.35
2	A	752	FAD	C5A-C6A-N1A	-2.19	115.40	120.35
2	A	752	FAD	C8M-C8-C9	-2.16	115.18	120.34
3	B	751	FMN	O3P-P-O5'	-2.15	101.01	106.73
3	B	751	FMN	C4'-C3'-C2'	-2.08	109.04	113.36
2	B	752	FAD	C8M-C8-C9	-2.07	115.40	120.34
2	A	752	FAD	C6-C5X-N5	-2.03	116.81	119.05
3	B	751	FMN	C8M-C8-C7	2.01	124.86	120.74

There are no chirality outliers.

All (16) torsion outliers are listed below:

Mol	Chain	Res	Type	Atoms
4	B	753	NAP	C2N-C3N-C7N-O7N
4	B	753	NAP	C2N-C3N-C7N-N7N
4	B	753	NAP	C4N-C3N-C7N-N7N
4	B	753	NAP	C4N-C3N-C7N-O7N
4	B	753	NAP	O4D-C4D-C5D-O5D
4	B	753	NAP	C3D-C4D-C5D-O5D
2	B	752	FAD	PA-O3P-P-O2P
4	B	753	NAP	PA-O3-PN-O1N
2	A	752	FAD	PA-O3P-P-O2P
4	B	753	NAP	C4D-C5D-O5D-PN

Continued on next page...

Continued from previous page...

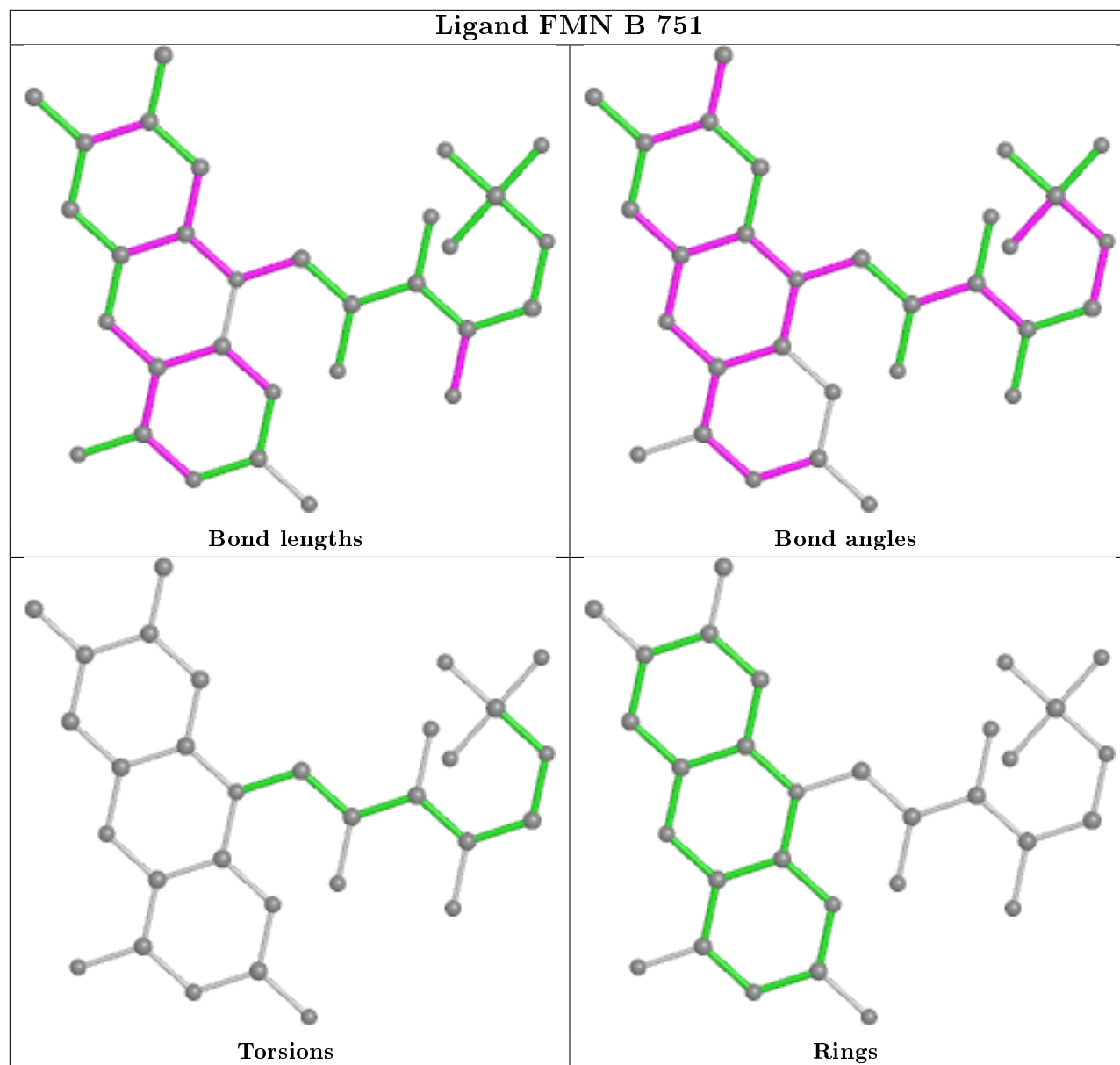
Mol	Chain	Res	Type	Atoms
2	B	752	FAD	O2'-C2'-C3'-C4'
2	B	752	FAD	O2'-C2'-C3'-O3'
4	B	753	NAP	C2B-O2B-P2B-O1X
4	A	753	NAP	C2B-O2B-P2B-O3X
2	B	752	FAD	PA-O3P-P-O1P
4	A	753	NAP	C5B-O5B-PA-O1A

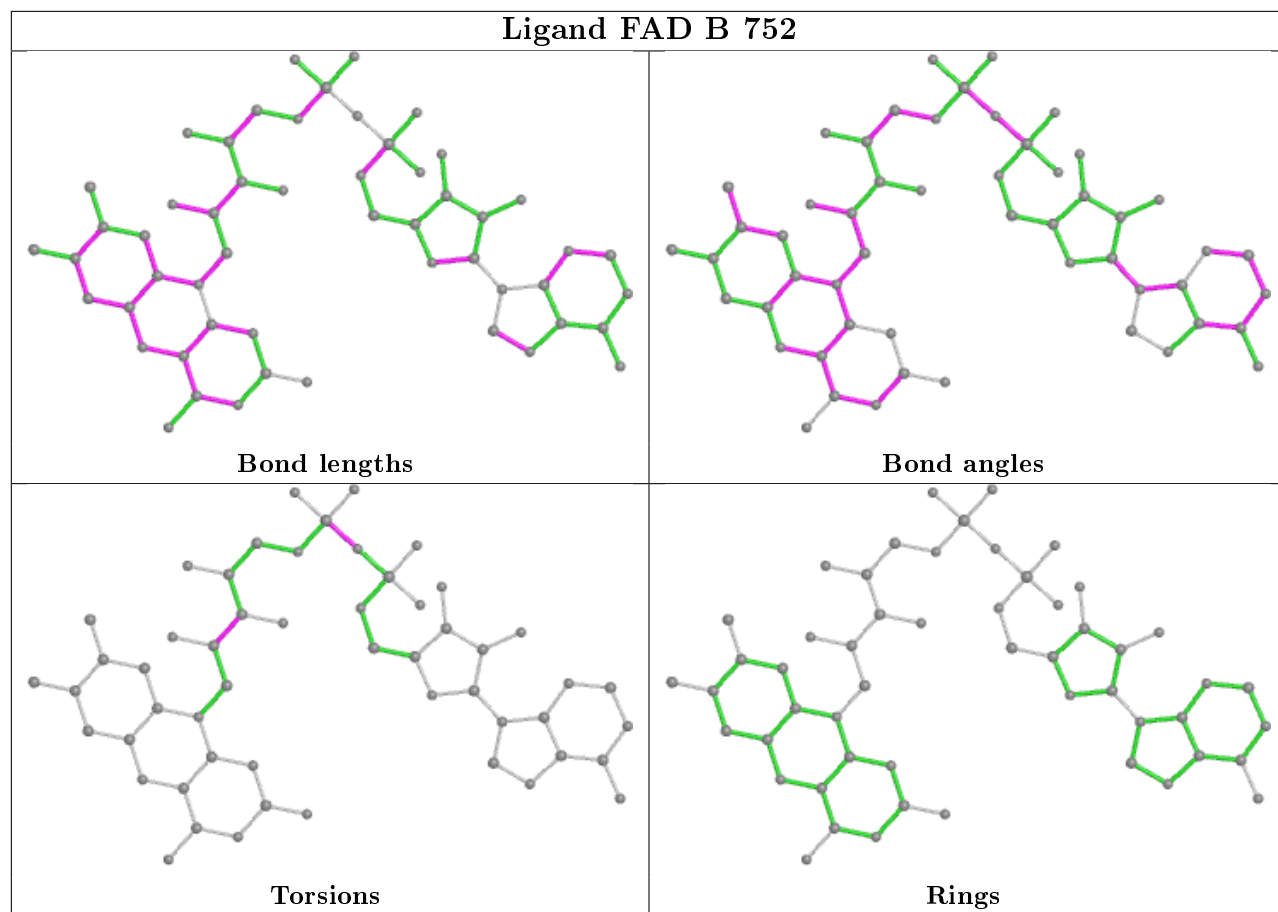
There are no ring outliers.

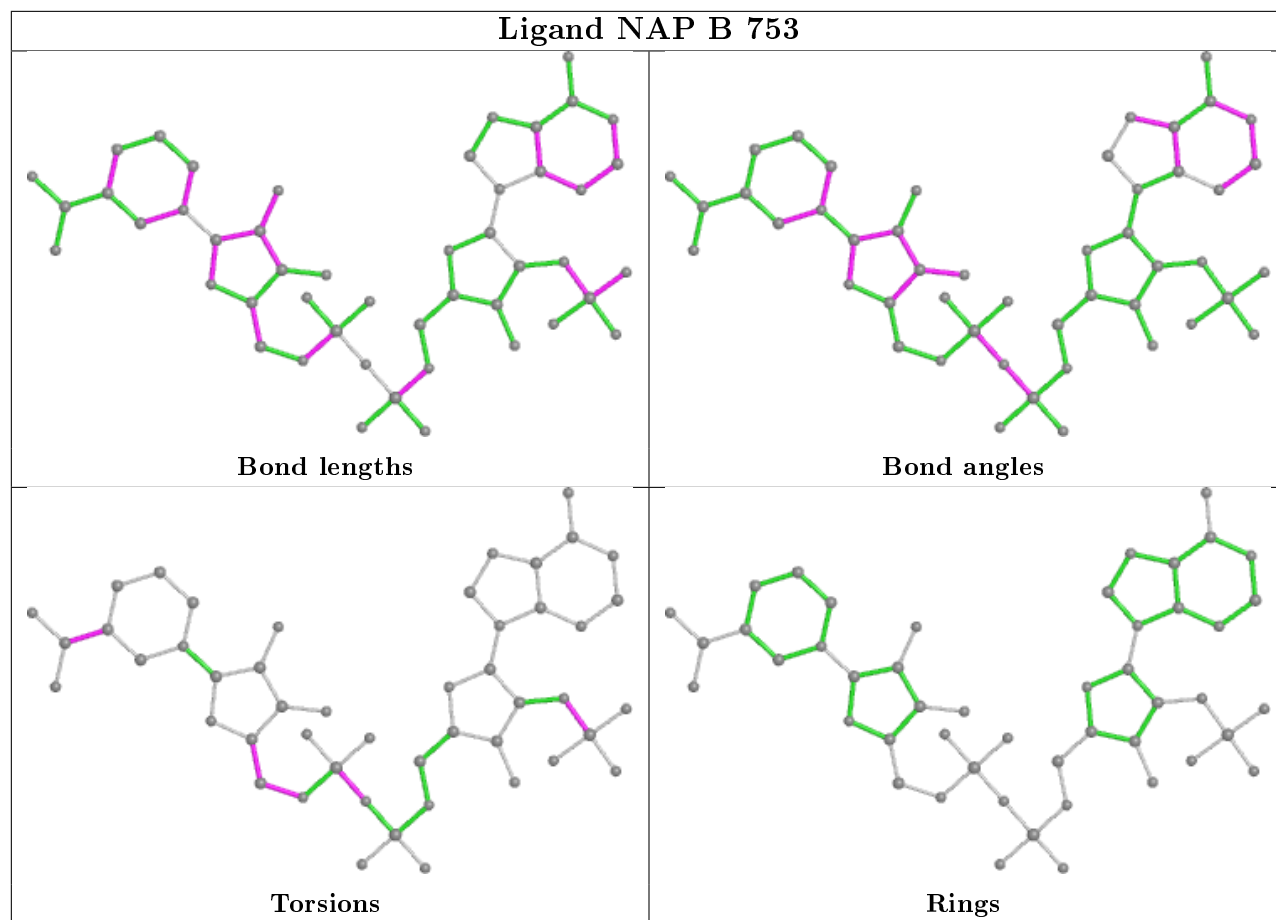
2 monomers are involved in 2 short contacts:

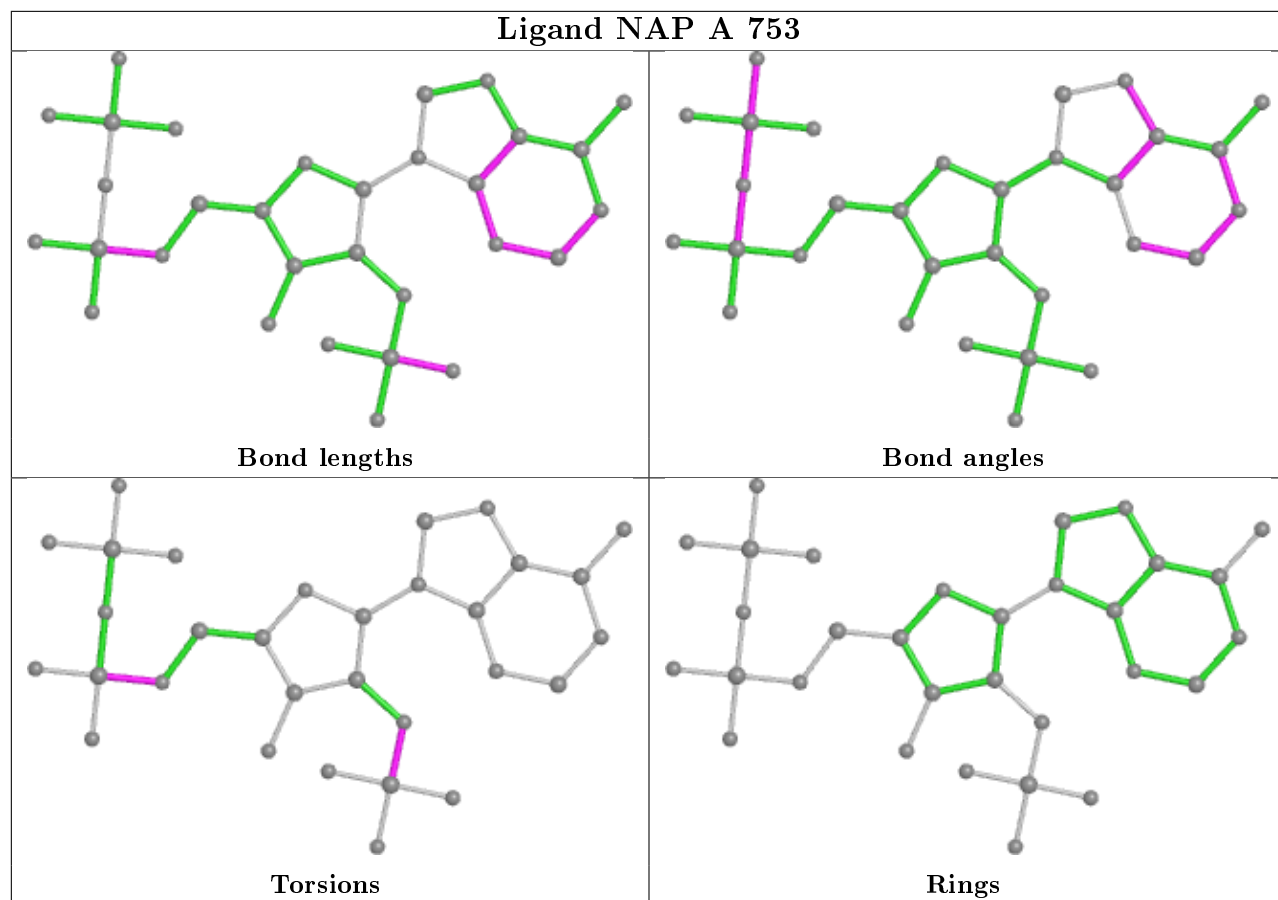
Mol	Chain	Res	Type	Clashes	Symm-Clashes
3	B	751	FMN	1	0
4	B	753	NAP	1	0

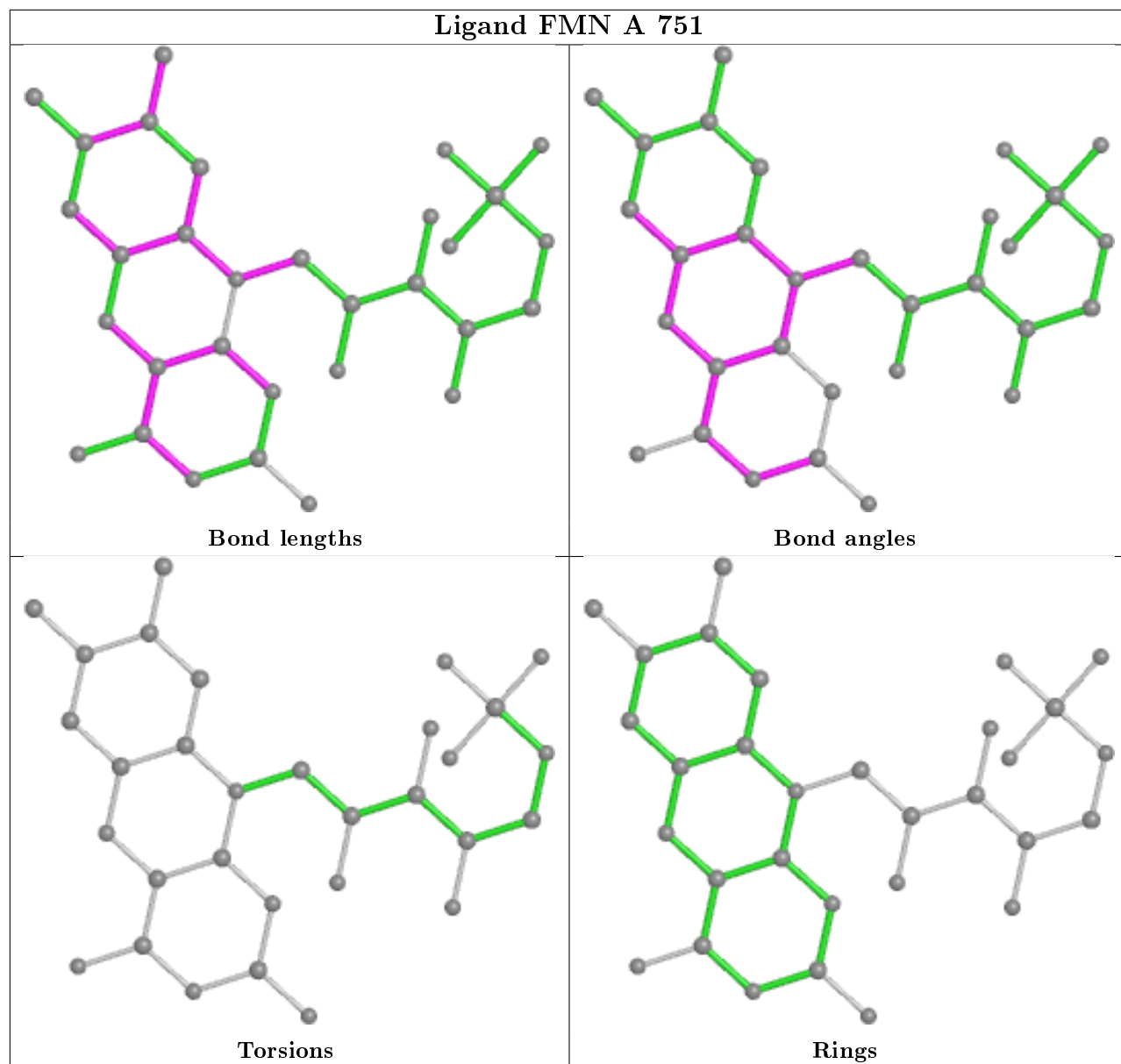
The following is a two-dimensional graphical depiction of Mogul quality analysis of bond lengths, bond angles, torsion angles, and ring geometry for all instances of the Ligand of Interest. In addition, ligands with molecular weight > 250 and outliers as shown on the validation Tables will also be included. For torsion angles, if less than 5% of the Mogul distribution of torsion angles is within 10 degrees of the torsion angle in question, then that torsion angle is considered an outlier. Any bond that is central to one or more torsion angles identified as an outlier by Mogul will be highlighted in the graph. For rings, the root-mean-square deviation (RMSD) between the ring in question and similar rings identified by Mogul is calculated over all ring torsion angles. If the average RMSD is greater than 60 degrees and the minimal RMSD between the ring in question and any Mogul-identified rings is also greater than 60 degrees, then that ring is considered an outlier. The outliers are highlighted in purple. The color gray indicates Mogul did not find sufficient equivalents in the CSD to analyse the geometry.

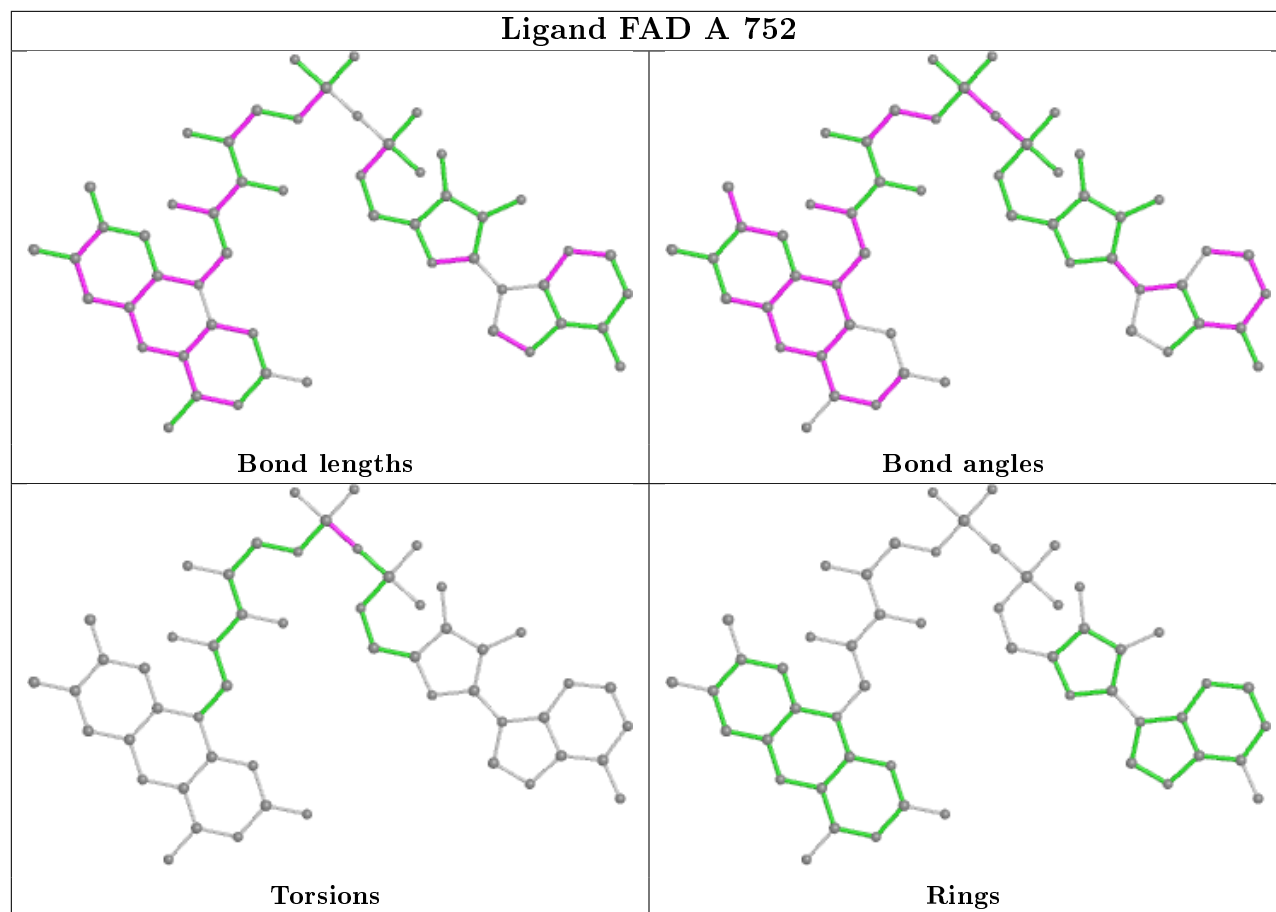












5.7 Other polymers [i](#)

There are no such residues in this entry.

5.8 Polymer linkage issues [i](#)

There are no chain breaks in this entry.

6 Fit of model and data ⓘ

6.1 Protein, DNA and RNA chains ⓘ

In the following table, the column labelled ‘#RSRZ> 2’ contains the number (and percentage) of RSRZ outliers, followed by percent RSRZ outliers for the chain as percentile scores relative to all X-ray entries and entries of similar resolution. The OWAB column contains the minimum, median, 95th percentile and maximum values of the occupancy-weighted average B-factor per residue. The column labelled ‘Q< 0.9’ lists the number of (and percentage) of residues with an average occupancy less than 0.9.

Mol	Chain	Analysed	<RSRZ>	#RSRZ>2	OWAB(Å ²)	Q<0.9
1	A	607/618 (98%)	-0.02	10 (1%) 72 68	13, 23, 40, 57	0
1	B	595/618 (96%)	0.78	57 (9%) 8 6	22, 42, 53, 58	0
All	All	1202/1236 (97%)	0.37	67 (5%) 24 19	13, 33, 51, 58	0

All (67) RSRZ outliers are listed below:

Mol	Chain	Res	Type	RSRZ
1	B	525	PHE	7.1
1	B	255	ASP	6.4
1	B	503	VAL	5.8
1	B	418	LEU	5.2
1	B	143	TYR	5.0
1	B	413	GLY	4.3
1	B	220	ILE	4.2
1	B	412	SER	4.0
1	B	402	GLN	4.0
1	B	299	THR	3.9
1	A	240	GLY	3.9
1	A	242	GLU	3.9
1	A	244	SER	3.9
1	B	277	PRO	3.8
1	B	240	GLY	3.6
1	B	163	ASP	3.5
1	B	509	ARG	3.4
1	B	408	MET	3.3
1	A	243	SER	3.3
1	B	404	LEU	3.3
1	B	239	THR	3.3
1	B	245	ILE	3.2
1	A	366	CYS	3.1
1	B	417	GLU	3.1

Continued on next page...

Continued from previous page...

Mol	Chain	Res	Type	RSRZ
1	B	422	TRP	3.1
1	B	337	LEU	2.9
1	B	74	GLU	2.9
1	B	357	GLU	2.9
1	B	298	GLY	2.9
1	B	241	GLU	2.8
1	B	501	GLU	2.8
1	B	406	ARG	2.8
1	B	414	GLU	2.8
1	B	399	PRO	2.8
1	B	300	GLU	2.8
1	B	107	ARG	2.7
1	A	239	THR	2.7
1	B	559	GLU	2.7
1	B	390	TYR	2.7
1	B	397	SER	2.7
1	A	299	THR	2.7
1	B	315	ILE	2.6
1	B	268	ARG	2.6
1	A	503	VAL	2.5
1	B	584	GLN	2.5
1	B	416	LYS	2.5
1	B	640	ARG	2.5
1	B	314	LYS	2.4
1	B	410	SER	2.4
1	B	636	ARG	2.3
1	B	420	LEU	2.3
1	B	288	ALA	2.3
1	B	359	ASN	2.2
1	B	560	VAL	2.2
1	A	241	GLU	2.2
1	B	267	GLY	2.2
1	B	282	LYS	2.2
1	B	280	ASP	2.1
1	B	425	GLU	2.1
1	B	259	ALA	2.1
1	B	210	ASP	2.1
1	B	213	GLY	2.1
1	B	411	SER	2.1
1	B	177	GLY	2.1
1	B	512	VAL	2.0
1	B	518	LYS	2.0

Continued on next page...

Continued from previous page...

Mol	Chain	Res	Type	RSRZ
1	A	245	ILE	2.0

6.2 Non-standard residues in protein, DNA, RNA chains [i](#)

There are no non-standard protein/DNA/RNA residues in this entry.

6.3 Carbohydrates [i](#)

There are no carbohydrates in this entry.

6.4 Ligands [i](#)

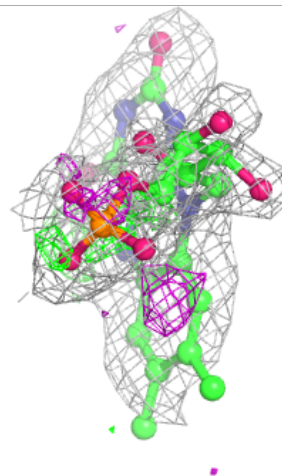
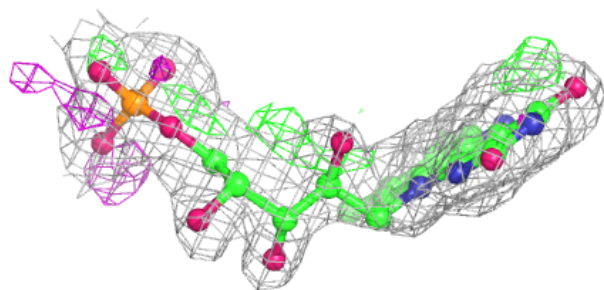
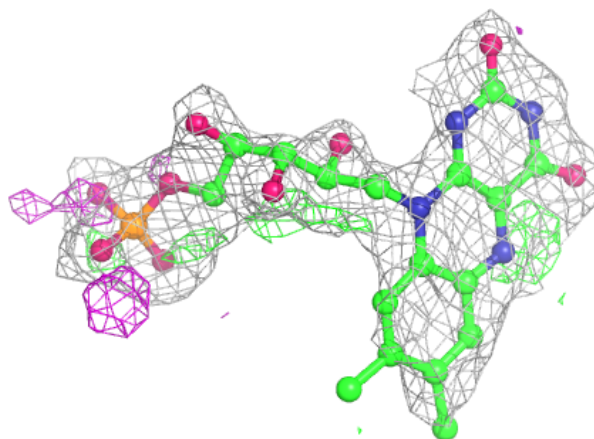
In the following table, the Atoms column lists the number of modelled atoms in the group and the number defined in the chemical component dictionary. The B-factors column lists the minimum, median, 95th percentile and maximum values of B factors of atoms in the group. The column labelled 'Q< 0.9' lists the number of atoms with occupancy less than 0.9.

Mol	Type	Chain	Res	Atoms	RSCC	RSR	B-factors(\AA^2)	Q<0.9
3	FMN	B	751	31/31	0.88	0.16	36,45,47,48	0
2	FAD	B	752	53/53	0.88	0.16	33,38,57,58	0
4	NAP	B	753	48/48	0.91	0.17	32,49,64,65	0
4	NAP	A	753	31/48	0.94	0.12	21,25,40,44	0
2	FAD	A	752	53/53	0.96	0.14	12,16,28,32	0
3	FMN	A	751	31/31	0.97	0.16	17,20,22,23	0
5	CA	A	762	1/1	0.98	0.04	28,28,28,28	0

The following is a graphical depiction of the model fit to experimental electron density of all instances of the Ligand of Interest. In addition, ligands with molecular weight > 250 and outliers as shown on the geometry validation Tables will also be included. Each fit is shown from different orientation to approximate a three-dimensional view.

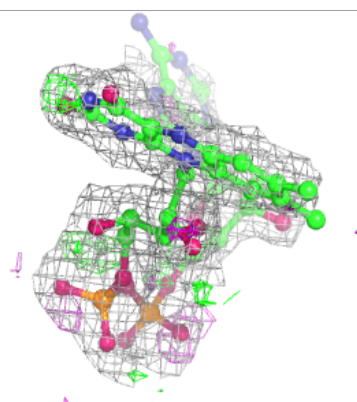
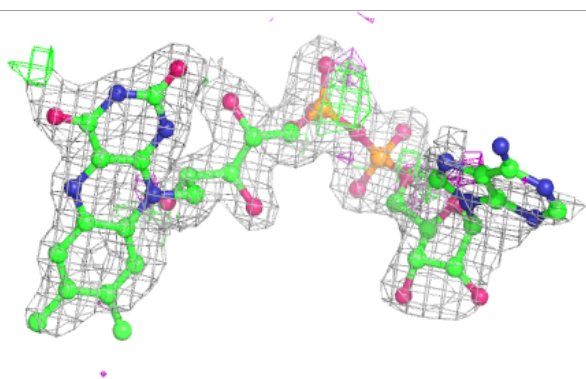
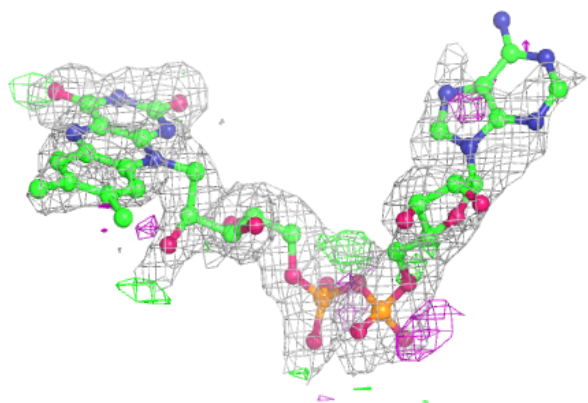
Electron density around FMN B 751:

$2mF_o-DF_c$ (at 0.7 rmsd) in gray
 mF_o-DF_c (at 3 rmsd) in purple (negative)
and green (positive)



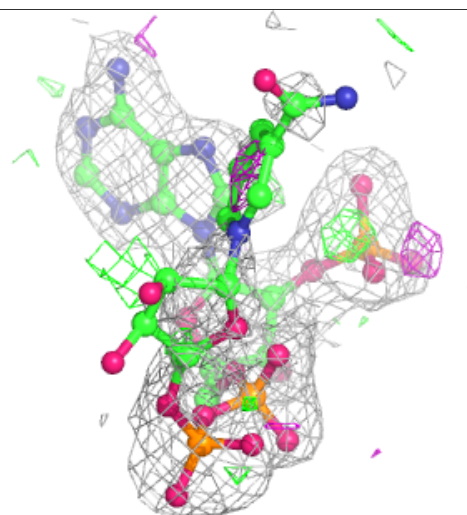
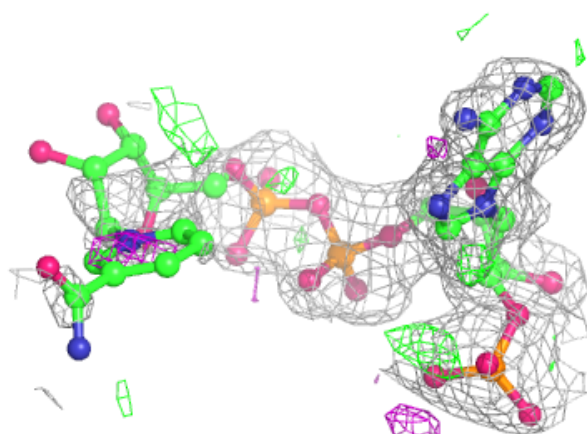
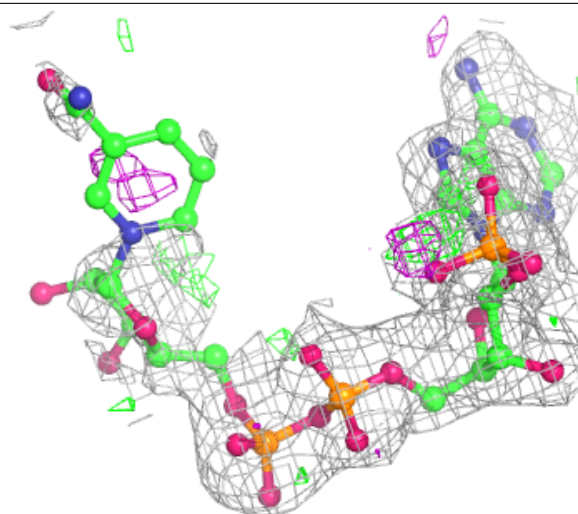
Electron density around FAD B 752:

$2mF_o-DF_c$ (at 0.7 rmsd) in gray
 mF_o-DF_c (at 3 rmsd) in purple (negative)
and green (positive)



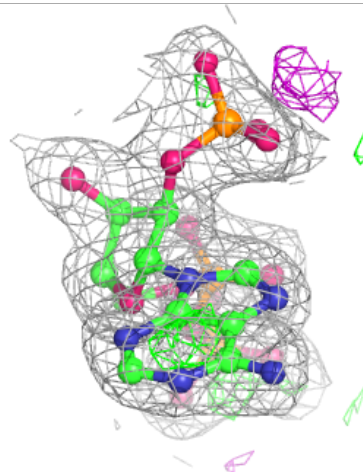
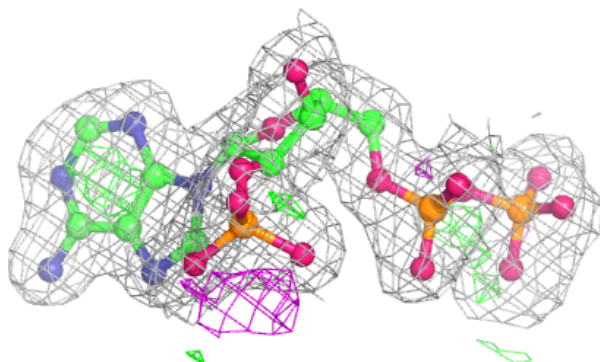
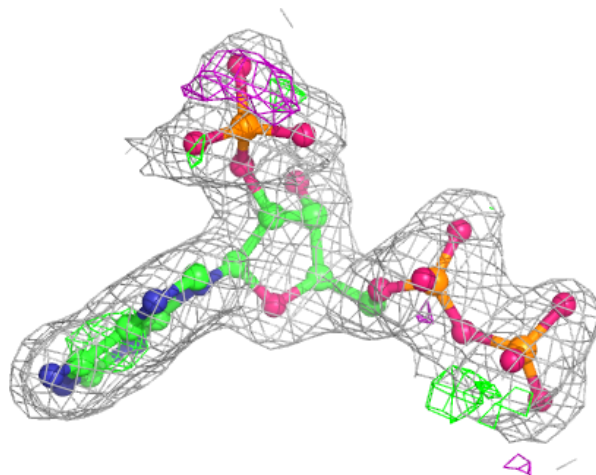
Electron density around NAP B 753:

$2mF_o-DF_c$ (at 0.7 rmsd) in gray
 mF_o-DF_c (at 3 rmsd) in purple (negative)
and green (positive)



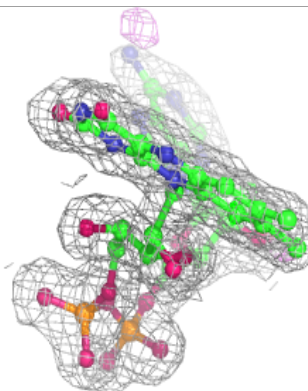
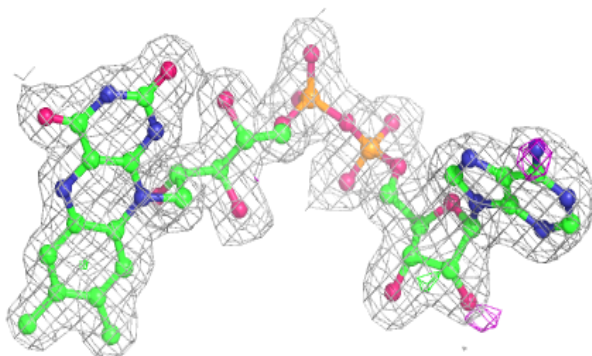
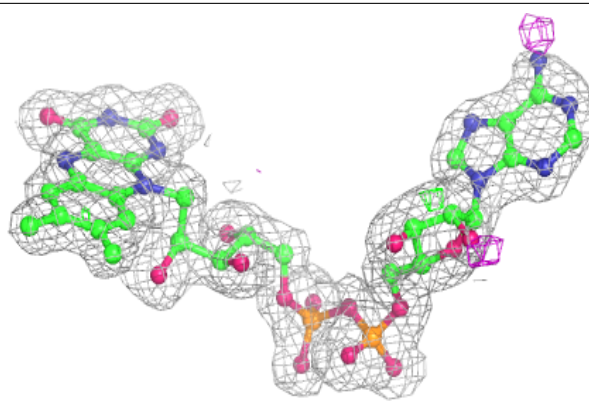
Electron density around NAP A 753:

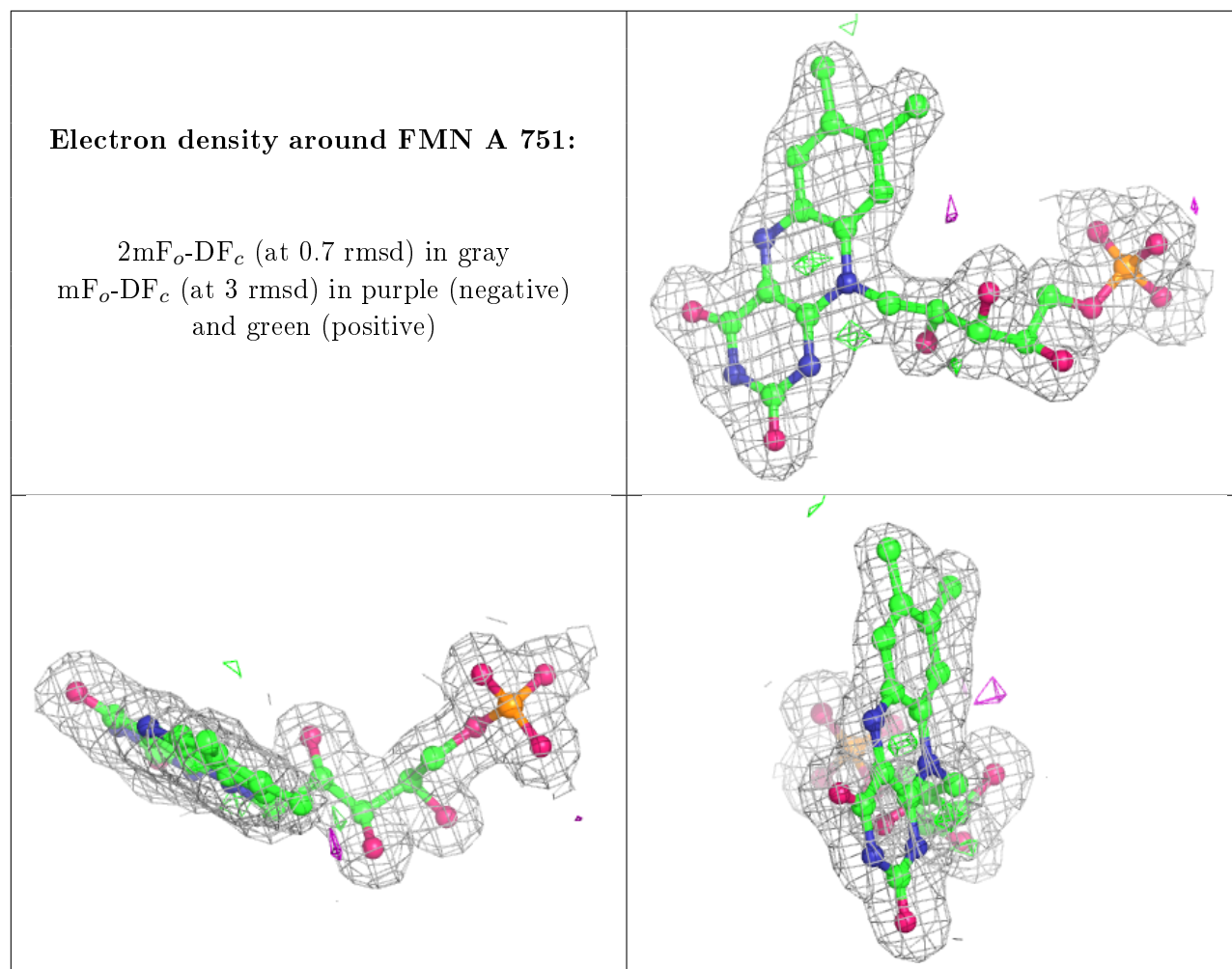
$2mF_o-DF_c$ (at 0.7 rmsd) in gray
 mF_o-DF_c (at 3 rmsd) in purple (negative)
and green (positive)



Electron density around FAD A 752:

$2mF_o-DF_c$ (at 0.7 rmsd) in gray
 mF_o-DF_c (at 3 rmsd) in purple (negative)
and green (positive)





6.5 Other polymers ⓘ

There are no such residues in this entry.