



# Full wwPDB X-ray Structure Validation Report ⓘ

May 15, 2020 – 04:19 pm BST

PDB ID : 1QG0  
Title : WILD-TYPE PEA FNR  
Authors : Deng, Z.; Aliverti, A.; Zanetti, G.; Arakaki, A.K.; Ottado, J.; Orellano, E.G.;  
Calcaterra, N.B.; Ceccarelli, E.A.; Carrillo, N.; Karplus, P.A.  
Deposited on : 1999-04-18  
Resolution : 2.50 Å(reported)

This is a Full wwPDB X-ray Structure Validation Report for a publicly released PDB entry.

We welcome your comments at [validation@mail.wwpdb.org](mailto:validation@mail.wwpdb.org)

A user guide is available at

<https://www.wwpdb.org/validation/2017/XrayValidationReportHelp>

with specific help available everywhere you see the ⓘ symbol.

---

The following versions of software and data (see [references ⓘ](#)) were used in the production of this report:

MolProbity : 4.02b-467  
Mogul : 1.8.5 (274361), CSD as541be (2020)  
Xtriage (Phenix) : 1.13  
EDS : 2.11  
buster-report : 1.1.7 (2018)  
Percentile statistics : 20191225.v01 (using entries in the PDB archive December 25th 2019)  
Refmac : 5.8.0158  
CCP4 : 7.0.044 (Gargrove)  
Ideal geometry (proteins) : Engh & Huber (2001)  
Ideal geometry (DNA, RNA) : Parkinson et al. (1996)  
Validation Pipeline (wwPDB-VP) : 2.11

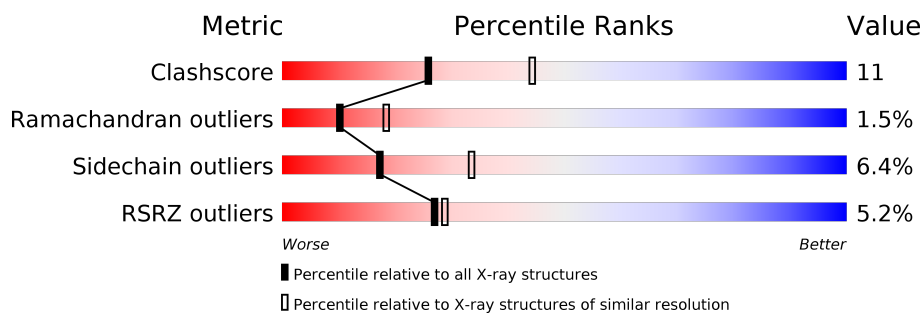
# 1 Overall quality at a glance

The following experimental techniques were used to determine the structure:

*X-RAY DIFFRACTION*

The reported resolution of this entry is 2.50 Å.

Percentile scores (ranging between 0-100) for global validation metrics of the entry are shown in the following graphic. The table shows the number of entries on which the scores are based.



Metric	Whole archive (#Entries)	Similar resolution (#Entries, resolution range(Å))
Clashscore	141614	5346 (2.50-2.50)
Ramachandran outliers	138981	5231 (2.50-2.50)
Sidechain outliers	138945	5233 (2.50-2.50)
RSRZ outliers	127900	4559 (2.50-2.50)

The table below summarises the geometric issues observed across the polymeric chains and their fit to the electron density. The red, orange, yellow and green segments on the lower bar indicate the fraction of residues that contain outliers for  $\geq 3$ , 2, 1 and 0 types of geometric quality criteria respectively. A grey segment represents the fraction of residues that are not modelled. The numeric value for each fraction is indicated below the corresponding segment, with a dot representing fractions  $\leq 5\%$ . The upper red bar (where present) indicates the fraction of residues that have poor fit to the electron density. The numeric value is given above the bar.

Mol	Chain	Length	Quality of chain
1	A	308	<div> <div>4%</div> <div>74%</div> <div>20%</div> <div>• •</div> </div>
1	B	308	<div> <div>6%</div> <div>69%</div> <div>25%</div> <div>• •</div> </div>

## 2 Entry composition [i](#)

There are 3 unique types of molecules in this entry. The entry contains 5030 atoms, of which 0 are hydrogens and 0 are deuteriums.

In the tables below, the ZeroOcc column contains the number of atoms modelled with zero occupancy, the AltConf column contains the number of residues with at least one atom in alternate conformation and the Trace column contains the number of residues modelled with at most 2 atoms.

- Molecule 1 is a protein called PROTEIN (FERREDOXIN:NADP+ REDUCTASE).

Mol	Chain	Residues	Atoms					ZeroOcc	AltConf	Trace
1	A	296	Total	C	N	O	S	0	0	0
			2357	1510	388	443	16			
1	B	296	Total	C	N	O	S	0	0	0
			2357	1510	388	443	16			

- Molecule 2 is FLAVIN-ADENINE DINUCLEOTIDE (three-letter code: FAD) (formula:  $C_{27}H_{33}N_9O_{15}P_2$ ).



Mol	Chain	Residues	Atoms					ZeroOcc	AltConf
2	A	1	Total	C	N	O	P	0	0
			53	27	9	15	2		
2	B	1	Total	C	N	O	P	0	0
			53	27	9	15	2		

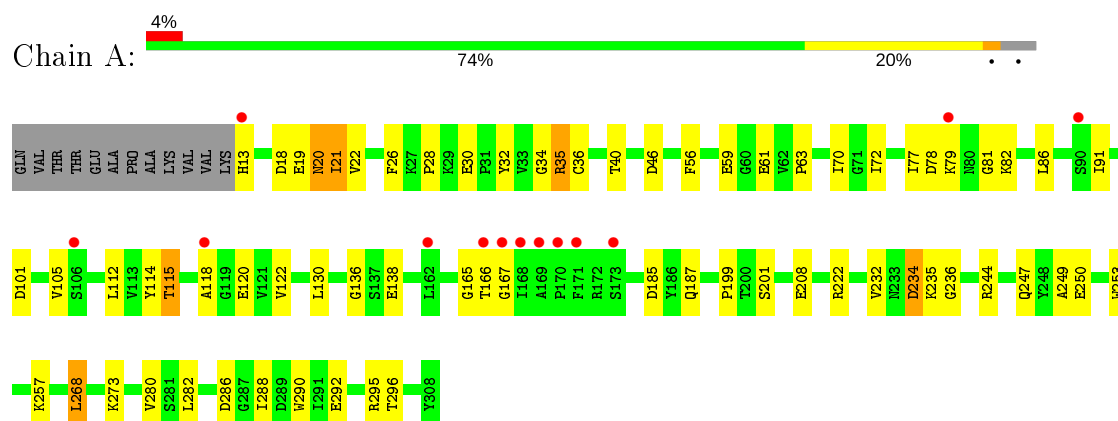
- Molecule 3 is water.

Mol	Chain	Residues	Atoms		ZeroOcc	AltConf
3	A	143	Total 143	O 143	0	0
3	B	67	Total 67	O 67	0	0

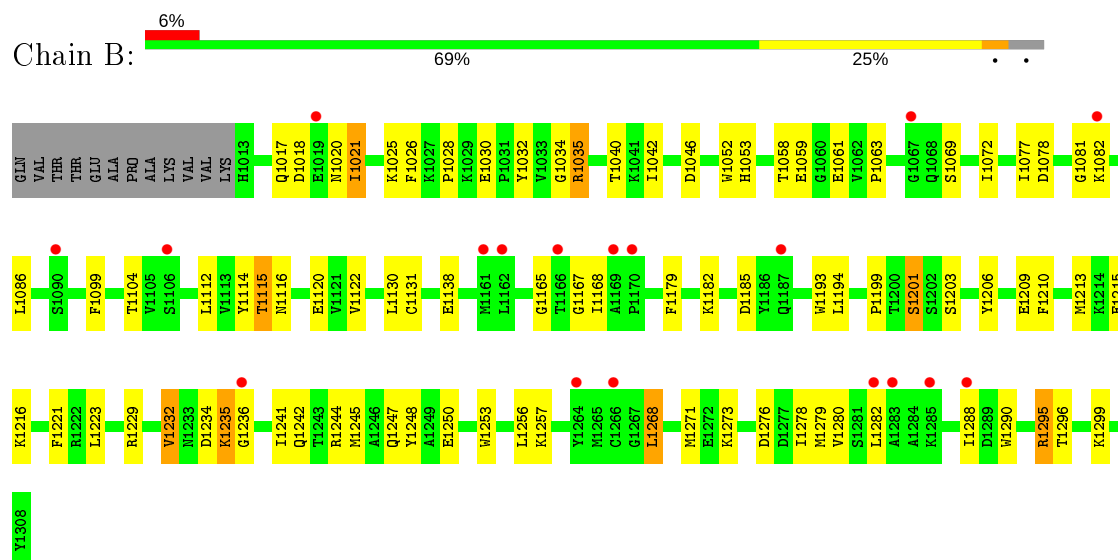
### 3 Residue-property plots [i](#)

These plots are drawn for all protein, RNA and DNA chains in the entry. The first graphic for a chain summarises the proportions of the various outlier classes displayed in the second graphic. The second graphic shows the sequence view annotated by issues in geometry and electron density. Residues are color-coded according to the number of geometric quality criteria for which they contain at least one outlier: green = 0, yellow = 1, orange = 2 and red = 3 or more. A red dot above a residue indicates a poor fit to the electron density ( $RSRZ > 2$ ). Stretches of 2 or more consecutive residues without any outlier are shown as a green connector. Residues present in the sample, but not in the model, are shown in grey.

#### • Molecule 1: PROTEIN (FERREDOXIN:NADP+ REDUCTASE)



#### • Molecule 1: PROTEIN (FERREDOXIN:NADP+ REDUCTASE)



## 4 Data and refinement statistics

Property	Value	Source
Space group	P 21 21 21	Depositor
Cell constants a, b, c, $\alpha$ , $\beta$ , $\gamma$	73.90 Å 94.10 Å 140.20 Å 90.00° 90.00° 90.00°	Depositor
Resolution (Å)	8.00 – 2.50 30.01 – 2.39	Depositor EDS
% Data completeness (in resolution range)	83.7 (8.00-2.50) 85.7 (30.01-2.39)	Depositor EDS
$R_{merge}$	(Not available)	Depositor
$R_{sym}$	0.07	Depositor
$\langle I/\sigma(I) \rangle$ <sup>1</sup>	2.29 (at 2.39 Å)	Xtriage
Refinement program	X-PLOR 3.8	Depositor
R, $R_{free}$	0.218 , 0.273 0.222 , (Not available)	Depositor DCC
$R_{free}$ test set	No test flags present.	wwPDB-VP
Wilson B-factor (Å <sup>2</sup> )	59.4	Xtriage
Anisotropy	0.395	Xtriage
Bulk solvent $k_{sol}$ (e/Å <sup>3</sup> ), $B_{sol}$ (Å <sup>2</sup> )	0.34 , 104.8	EDS
L-test for twinning <sup>2</sup>	$\langle  L  \rangle = 0.50$ , $\langle L^2 \rangle = 0.34$	Xtriage
Estimated twinning fraction	No twinning to report.	Xtriage
$F_o, F_c$ correlation	0.95	EDS
Total number of atoms	5030	wwPDB-VP
Average B, all atoms (Å <sup>2</sup> )	57.0	wwPDB-VP

Xtriage's analysis on translational NCS is as follows: *The largest off-origin peak in the Patterson function is 4.02% of the height of the origin peak. No significant pseudotranslation is detected.*

<sup>1</sup>Intensities estimated from amplitudes.

<sup>2</sup>Theoretical values of  $\langle |L| \rangle$ ,  $\langle L^2 \rangle$  for acentric reflections are 0.5, 0.333 respectively for untwinned datasets, and 0.375, 0.2 for perfectly twinned datasets.

## 5 Model quality

### 5.1 Standard geometry

Bond lengths and bond angles in the following residue types are not validated in this section: FAD

The Z score for a bond length (or angle) is the number of standard deviations the observed value is removed from the expected value. A bond length (or angle) with  $|Z| > 5$  is considered an outlier worth inspection. RMSZ is the root-mean-square of all Z scores of the bond lengths (or angles).

Mol	Chain	Bond lengths		Bond angles	
		RMSZ	$\# Z  > 5$	RMSZ	$\# Z  > 5$
1	A	0.68	0/2410	0.80	0/3244
1	B	0.68	0/2410	0.81	0/3244
All	All	0.68	0/4820	0.80	0/6488

There are no bond length outliers.

There are no bond angle outliers.

There are no chirality outliers.

There are no planarity outliers.

### 5.2 Too-close contacts

In the following table, the Non-H and H(model) columns list the number of non-hydrogen atoms and hydrogen atoms in the chain respectively. The H(added) column lists the number of hydrogen atoms added and optimized by MolProbity. The Clashes column lists the number of clashes within the asymmetric unit, whereas Symm-Clashes lists symmetry related clashes.

Mol	Chain	Non-H	H(model)	H(added)	Clashes	Symm-Clashes
1	A	2357	0	2349	44	0
1	B	2357	0	2349	56	0
2	A	53	0	31	2	0
2	B	53	0	31	4	0
3	A	143	0	0	6	0
3	B	67	0	0	2	0
All	All	5030	0	4760	101	0

The all-atom clashscore is defined as the number of clashes found per 1000 atoms (including hydrogen atoms). The all-atom clashscore for this structure is 11.

All (101) close contacts within the same asymmetric unit are listed below, sorted by their clash

magnitude.

Atom-1	Atom-2	Interatomic distance (Å)	Clash overlap (Å)
1:B:1253:TRP:HB2	1:B:1282:LEU:HD11	1.52	0.89
1:A:253:TRP:HB2	1:A:282:LEU:HD11	1.53	0.88
1:B:1232:VAL:HG13	1:B:1236:GLY:HA2	1.54	0.88
1:B:1244:ARG:HH11	1:B:1247:GLN:HE22	1.22	0.86
1:A:232:VAL:HG13	1:A:236:GLY:HA2	1.57	0.85
1:B:1035:ARG:HG2	1:B:1035:ARG:HH11	1.42	0.84
1:B:1035:ARG:CG	1:B:1035:ARG:HH11	2.01	0.73
1:B:1232:VAL:CG1	1:B:1236:GLY:HA2	2.18	0.73
1:A:292:GLU:HB2	3:A:2107:HOH:O	1.89	0.71
1:A:232:VAL:CG1	1:A:236:GLY:HA2	2.21	0.70
1:A:244:ARG:HH11	1:A:247:GLN:HE22	1.41	0.69
1:B:1244:ARG:NH1	1:B:1247:GLN:HE22	1.93	0.67
1:A:118:ALA:O	1:B:1229:ARG:NH1	2.28	0.67
1:B:1244:ARG:HH11	1:B:1247:GLN:NE2	1.90	0.67
1:A:18:ASP:O	1:A:21:ILE:HG13	1.96	0.65
1:A:28:PRO:HB3	1:A:86:LEU:HD23	1.80	0.62
1:B:1182:LYS:HB2	3:B:2106:HOH:O	2.01	0.60
1:B:1061:GLU:O	1:B:1063:PRO:HD3	2.02	0.59
1:B:1028:PRO:HB3	1:B:1086:LEU:HD23	1.85	0.59
1:B:1112:LEU:CD2	2:B:1309:FAD:H52A	2.33	0.58
1:B:1253:TRP:HZ2	1:B:1288:ILE:HD12	1.69	0.58
1:A:61:GLU:O	1:A:63:PRO:HD3	2.05	0.57
1:B:1032:TYR:OH	1:B:1059:GLU:HG2	2.05	0.56
1:B:1116:ASN:HB2	3:B:2083:HOH:O	2.03	0.56
1:B:1268:LEU:O	1:B:1271:MET:HG2	2.05	0.56
1:B:1114:TYR:O	1:B:1122:VAL:N	2.38	0.56
1:B:1280:VAL:HA	1:B:1290:TRP:HB2	1.87	0.56
1:A:101:ASP:HB2	3:A:2068:HOH:O	2.05	0.55
1:B:1078:ASP:N	1:B:1082:LYS:O	2.36	0.54
1:B:1253:TRP:NE1	1:B:1257:LYS:HE3	2.22	0.54
1:B:1035:ARG:NH1	1:B:1035:ARG:HG2	2.16	0.53
1:A:253:TRP:HZ2	1:A:288:ILE:HD12	1.73	0.53
1:A:187:GLN:HB2	3:A:2037:HOH:O	2.08	0.52
1:A:280:VAL:HA	1:A:290:TRP:HB2	1.90	0.52
1:A:114:TYR:O	1:A:122:VAL:N	2.42	0.52
1:A:115:THR:HA	1:A:120:GLU:O	2.11	0.51
1:B:1018:ASP:O	1:B:1021:ILE:HG13	2.11	0.51
2:B:1309:FAD:H8A	2:B:1309:FAD:H3B	1.91	0.51
1:A:244:ARG:HH11	1:A:247:GLN:NE2	2.09	0.50
1:B:1077:ILE:HG23	1:B:1081:GLY:C	2.31	0.50
1:B:1072:ILE:HG21	1:B:1130:LEU:HD21	1.93	0.49

*Continued on next page...*



*Continued from previous page...*

Atom-1	Atom-2	Interatomic distance (Å)	Clash overlap (Å)
1:B:1282:LEU:O	1:B:1282:LEU:HD22	2.11	0.49
1:B:1194:LEU:HD23	1:B:1223:LEU:CD1	2.42	0.49
1:A:78:ASP:N	1:A:82:LYS:O	2.36	0.49
1:B:1273:LYS:O	1:B:1276:ASP:HB2	2.12	0.49
1:A:282:LEU:O	1:A:282:LEU:HD22	2.12	0.49
1:A:112:LEU:CD2	2:A:309:FAD:H52A	2.43	0.48
1:A:222:ARG:NH2	3:A:2012:HOH:O	2.43	0.48
1:A:244:ARG:NH1	1:A:247:GLN:HE22	2.11	0.48
1:A:22:VAL:HG11	1:A:63:PRO:CG	2.44	0.47
1:B:1179:PHE:CE2	1:B:1221:PHE:HB2	2.49	0.47
1:A:77:ILE:HG23	1:A:81:GLY:C	2.35	0.47
1:A:32:TYR:OH	1:A:59:GLU:HG2	2.15	0.47
1:B:1209:GLU:O	1:B:1213:MET:HG3	2.15	0.47
1:B:1034:GLY:O	1:B:1138:GLU:HA	2.15	0.46
1:A:22:VAL:HG11	1:A:63:PRO:HG3	1.97	0.46
1:B:1025:LYS:HE2	1:B:1026:PHE:CZ	2.51	0.46
1:B:1042:ILE:HD13	1:B:1053:HIS:HB2	1.97	0.46
1:A:72:ILE:HG21	1:A:130:LEU:HD21	1.97	0.46
1:B:1112:LEU:HD21	2:B:1309:FAD:H52A	1.97	0.45
1:B:1273:LYS:HD2	1:B:1273:LYS:HA	1.57	0.45
1:A:253:TRP:NE1	1:A:257:LYS:HE3	2.31	0.45
1:A:253:TRP:CZ2	1:A:288:ILE:HD12	2.50	0.45
1:A:257:LYS:HE2	1:A:286:ASP:OD2	2.16	0.45
1:A:34:GLY:O	1:A:138:GLU:HA	2.16	0.45
1:B:1052:TRP:CD1	1:B:1131:CYS:SG	3.09	0.45
1:A:112:LEU:HD21	2:A:309:FAD:H52A	1.98	0.45
1:B:1115:THR:HA	1:B:1120:GLU:O	2.17	0.44
1:A:26:PHE:CD2	1:A:32:TYR:HB2	2.51	0.44
1:A:36:CYS:O	1:A:136:GLY:N	2.40	0.44
1:A:268:LEU:HD13	1:A:268:LEU:N	2.33	0.44
1:B:1099:PHE:CD2	1:B:1104:THR:HG21	2.53	0.43
1:B:1253:TRP:CE3	1:B:1282:LEU:HD13	2.53	0.43
1:A:35:ARG:HG2	3:A:2098:HOH:O	2.17	0.43
1:A:273:LYS:HD2	1:A:273:LYS:HA	1.75	0.43
1:A:165:GLY:C	1:A:167:GLY:H	2.22	0.43
1:B:1241:ILE:O	1:B:1245:MET:HG3	2.19	0.43
1:A:56:PHE:HB2	1:A:105:VAL:HG12	2.00	0.42
1:A:268:LEU:CD1	1:A:268:LEU:N	2.81	0.42
1:B:1215:GLU:HG3	1:B:1216:LYS:N	2.34	0.42
1:A:165:GLY:O	1:A:167:GLY:N	2.52	0.42
1:A:35:ARG:CG	3:A:2098:HOH:O	2.68	0.42

*Continued on next page...*

Continued from previous page...

Atom-1	Atom-2	Interatomic distance (Å)	Clash overlap (Å)
1:B:1058:THR:O	1:B:1059:GLU:HG2	2.19	0.42
1:B:1114:TYR:CE1	1:B:1122:VAL:HB	2.55	0.41
1:B:1235:LYS:HD2	1:B:1235:LYS:H	1.85	0.41
1:B:1242:GLN:HB2	1:B:1278:ILE:HG13	2.02	0.41
1:B:1279:MET:HB3	1:B:1290:TRP:CE2	2.55	0.41
1:A:268:LEU:H	1:A:268:LEU:HD13	1.84	0.41
1:B:1194:LEU:HD23	1:B:1223:LEU:HD12	2.02	0.41
1:B:1165:GLY:O	1:B:1167:GLY:N	2.54	0.41
1:B:1206:TYR:HB2	1:B:1210:PHE:CE2	2.56	0.41
1:B:1086:LEU:C	1:B:1086:LEU:HD12	2.40	0.41
2:B:1309:FAD:H9	2:B:1309:FAD:H1'1	1.87	0.41
1:B:1201:SER:C	1:B:1203:SER:H	2.24	0.41
1:A:19:GLU:O	1:A:20:ASN:HB2	2.21	0.41
1:B:1165:GLY:C	1:B:1167:GLY:H	2.24	0.41
1:B:1256:LEU:HA	1:B:1256:LEU:HD23	1.89	0.40
1:B:1193:TRP:CZ2	1:B:1248:TYR:CD2	3.10	0.40
1:B:1253:TRP:HE1	1:B:1257:LYS:HE3	1.85	0.40
1:B:1295:ARG:HH12	1:B:1299:LYS:NZ	2.19	0.40
1:A:70:ILE:HG23	1:A:91:ILE:HD11	2.04	0.40

There are no symmetry-related clashes.

## 5.3 Torsion angles [i](#)

### 5.3.1 Protein backbone [i](#)

In the following table, the Percentiles column shows the percent Ramachandran outliers of the chain as a percentile score with respect to all X-ray entries followed by that with respect to entries of similar resolution.

The Analysed column shows the number of residues for which the backbone conformation was analysed, and the total number of residues.

Mol	Chain	Analysed	Favoured	Allowed	Outliers	Percentiles	
1	A	294/308 (96%)	271 (92%)	18 (6%)	5 (2%)	9	16
1	B	294/308 (96%)	272 (92%)	18 (6%)	4 (1%)	11	20
All	All	588/616 (96%)	543 (92%)	36 (6%)	9 (2%)	10	18

All (9) Ramachandran outliers are listed below:

Mol	Chain	Res	Type
1	A	166	THR
1	A	199	PRO
1	A	20	ASN
1	B	1020	ASN
1	B	1199	PRO
1	A	234	ASP
1	B	1017	GLN
1	B	1234	ASP
1	A	249	ALA

### 5.3.2 Protein sidechains ⓘ

In the following table, the Percentiles column shows the percent sidechain outliers of the chain as a percentile score with respect to all X-ray entries followed by that with respect to entries of similar resolution.

The Analysed column shows the number of residues for which the sidechain conformation was analysed, and the total number of residues.

Mol	Chain	Analysed	Rotameric	Outliers	Percentiles	
1	A	257/267 (96%)	240 (93%)	17 (7%)	16	32
1	B	257/267 (96%)	241 (94%)	16 (6%)	18	35
All	All	514/534 (96%)	481 (94%)	33 (6%)	17	33

All (33) residues with a non-rotameric sidechain are listed below:

Mol	Chain	Res	Type
1	A	13	HIS
1	A	21	ILE
1	A	30	GLU
1	A	35	ARG
1	A	40	THR
1	A	46	ASP
1	A	79	LYS
1	A	115	THR
1	A	185	ASP
1	A	201	SER
1	A	208	GLU
1	A	234	ASP
1	A	235	LYS
1	A	250	GLU
1	A	268	LEU

*Continued on next page...*

*Continued from previous page...*

Mol	Chain	Res	Type
1	A	295	ARG
1	A	296	THR
1	B	1021	ILE
1	B	1030	GLU
1	B	1035	ARG
1	B	1040	THR
1	B	1046	ASP
1	B	1069	SER
1	B	1115	THR
1	B	1168	ILE
1	B	1185	ASP
1	B	1201	SER
1	B	1232	VAL
1	B	1235	LYS
1	B	1250	GLU
1	B	1268	LEU
1	B	1295	ARG
1	B	1296	THR

Some sidechains can be flipped to improve hydrogen bonding and reduce clashes. All (4) such sidechains are listed below:

Mol	Chain	Res	Type
1	A	13	HIS
1	A	17	GLN
1	A	247	GLN
1	B	1247	GLN

### 5.3.3 RNA ⓘ

There are no RNA molecules in this entry.

## 5.4 Non-standard residues in protein, DNA, RNA chains ⓘ

There are no non-standard protein/DNA/RNA residues in this entry.

## 5.5 Carbohydrates ⓘ

There are no carbohydrates in this entry.

## 5.6 Ligand geometry

2 ligands are modelled in this entry.

In the following table, the Counts columns list the number of bonds (or angles) for which Mogul statistics could be retrieved, the number of bonds (or angles) that are observed in the model and the number of bonds (or angles) that are defined in the Chemical Component Dictionary. The Link column lists molecule types, if any, to which the group is linked. The Z score for a bond length (or angle) is the number of standard deviations the observed value is removed from the expected value. A bond length (or angle) with  $|Z| > 2$  is considered an outlier worth inspection. RMSZ is the root-mean-square of all Z scores of the bond lengths (or angles).

Mol	Type	Chain	Res	Link	Bond lengths			Bond angles		
					Counts	RMSZ	$\# Z  > 2$	Counts	RMSZ	$\# Z  > 2$
2	FAD	A	309	-	51,58,58	1.51	10 (19%)	60,89,89	1.51	3 (5%)
2	FAD	B	1309	-	51,58,58	1.53	12 (23%)	60,89,89	1.57	3 (5%)

In the following table, the Chirals column lists the number of chiral outliers, the number of chiral centers analysed, the number of these observed in the model and the number defined in the Chemical Component Dictionary. Similar counts are reported in the Torsion and Rings columns. '-' means no outliers of that kind were identified.

Mol	Type	Chain	Res	Link	Chirals	Torsions	Rings
2	FAD	A	309	-	-	1/30/50/50	0/6/6/6
2	FAD	B	1309	-	-	2/30/50/50	0/6/6/6

All (22) bond length outliers are listed below:

Mol	Chain	Res	Type	Atoms	Z	Observed(Å)	Ideal(Å)
2	A	309	FAD	C4X-C10	3.95	1.42	1.38
2	B	1309	FAD	C10-N1	3.53	1.37	1.33
2	B	1309	FAD	C4-N3	3.46	1.39	1.33
2	A	309	FAD	O4B-C1B	3.10	1.45	1.41
2	A	309	FAD	C4-N3	3.08	1.38	1.33
2	A	309	FAD	C8A-N7A	-3.05	1.29	1.34
2	A	309	FAD	C4X-N5	2.91	1.37	1.33
2	B	1309	FAD	C4X-C10	2.88	1.41	1.38
2	B	1309	FAD	P-O2P	-2.84	1.42	1.55
2	B	1309	FAD	C8A-N7A	-2.74	1.29	1.34
2	B	1309	FAD	PA-O5B	-2.69	1.48	1.59
2	A	309	FAD	O5'-C5'	2.44	1.54	1.44
2	B	1309	FAD	C5'-C4'	2.40	1.55	1.51
2	B	1309	FAD	C4-C4X	2.36	1.45	1.41
2	A	309	FAD	C4-C4X	2.20	1.45	1.41
2	B	1309	FAD	C2B-C1B	-2.17	1.50	1.53

*Continued on next page...*

*Continued from previous page...*

Mol	Chain	Res	Type	Atoms	Z	Observed(Å)	Ideal(Å)
2	B	1309	FAD	C4'-C3'	-2.13	1.49	1.53
2	B	1309	FAD	C4X-N5	2.10	1.36	1.33
2	A	309	FAD	PA-O2A	-2.09	1.45	1.55
2	A	309	FAD	P-O2P	-2.06	1.45	1.55
2	A	309	FAD	P-O1P	-2.04	1.43	1.50
2	B	1309	FAD	C2B-C3B	-2.03	1.47	1.53

All (6) bond angle outliers are listed below:

Mol	Chain	Res	Type	Atoms	Z	Observed(°)	Ideal(°)
2	B	1309	FAD	C4-N3-C2	8.15	122.03	115.14
2	A	309	FAD	C4-N3-C2	7.75	121.69	115.14
2	B	1309	FAD	C4X-C4-N3	-5.19	116.33	123.43
2	A	309	FAD	C4X-C4-N3	-5.09	116.47	123.43
2	A	309	FAD	C1'-N10-C9A	3.02	120.67	118.29
2	B	1309	FAD	C1'-N10-C9A	2.66	120.38	118.29

There are no chirality outliers.

All (3) torsion outliers are listed below:

Mol	Chain	Res	Type	Atoms
2	A	309	FAD	C3'-C4'-C5'-O5'
2	B	1309	FAD	C3'-C4'-C5'-O5'
2	B	1309	FAD	C3B-C4B-C5B-O5B

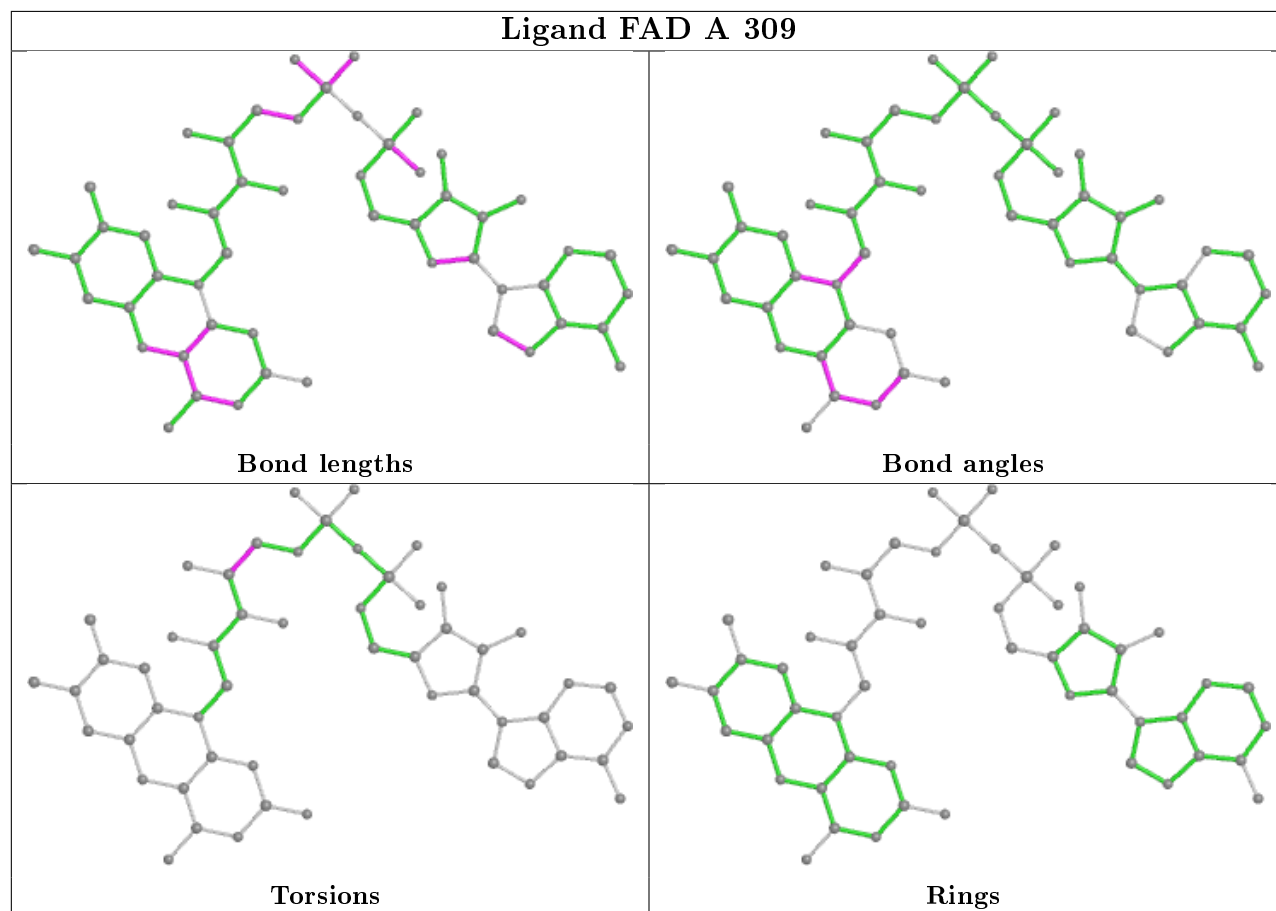
There are no ring outliers.

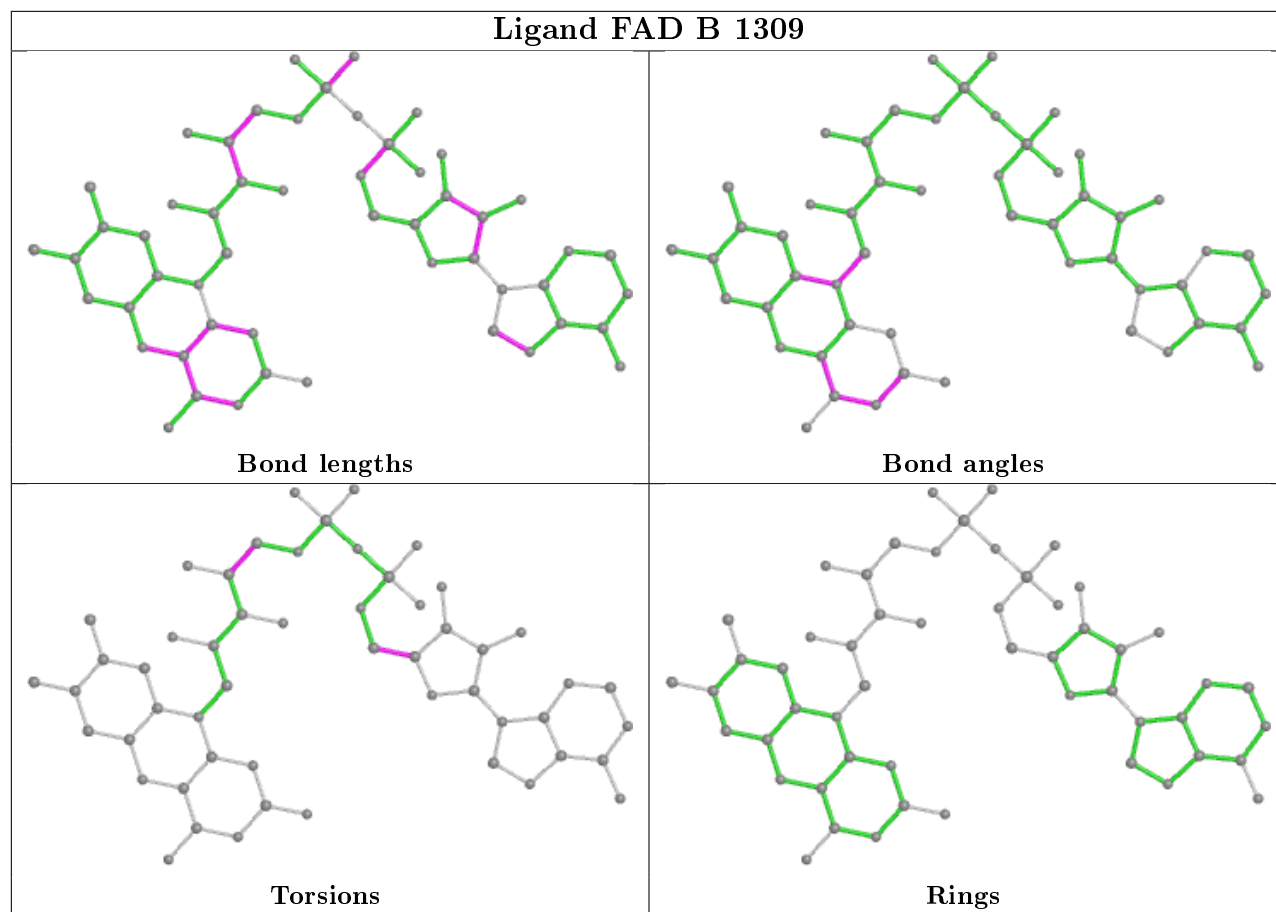
2 monomers are involved in 6 short contacts:

Mol	Chain	Res	Type	Clashes	Symm-Clashes
2	A	309	FAD	2	0
2	B	1309	FAD	4	0

The following is a two-dimensional graphical depiction of Mogul quality analysis of bond lengths, bond angles, torsion angles, and ring geometry for all instances of the Ligand of Interest. In addition, ligands with molecular weight > 250 and outliers as shown on the validation Tables will also be included. For torsion angles, if less than 5% of the Mogul distribution of torsion angles is within 10 degrees of the torsion angle in question, then that torsion angle is considered an outlier. Any bond that is central to one or more torsion angles identified as an outlier by Mogul will be highlighted in the graph. For rings, the root-mean-square deviation (RMSD) between the ring in question and similar rings identified by Mogul is calculated over all ring torsion angles. If the average RMSD is greater than 60 degrees and the minimal RMSD between the ring in question and

any Mogul-identified rings is also greater than 60 degrees, then that ring is considered an outlier. The outliers are highlighted in purple. The color gray indicates Mogul did not find sufficient equivalents in the CSD to analyse the geometry.





## 5.7 Other polymers [i](#)

There are no such residues in this entry.

## 5.8 Polymer linkage issues [i](#)

There are no chain breaks in this entry.



## 6 Fit of model and data ⓘ

### 6.1 Protein, DNA and RNA chains ⓘ

In the following table, the column labelled ‘#RSRZ> 2’ contains the number (and percentage) of RSRZ outliers, followed by percent RSRZ outliers for the chain as percentile scores relative to all X-ray entries and entries of similar resolution. The OWAB column contains the minimum, median, 95<sup>th</sup> percentile and maximum values of the occupancy-weighted average B-factor per residue. The column labelled ‘Q< 0.9’ lists the number of (and percentage) of residues with an average occupancy less than 0.9.

Mol	Chain	Analysed	<RSRZ>	#RSRZ>2	OWAB(Å <sup>2</sup> )	Q<0.9
1	A	296/308 (96%)	-0.10	13 (4%) 34 37	30, 49, 86, 99	0
1	B	296/308 (96%)	0.04	18 (6%) 21 22	32, 57, 89, 100	0
All	All	592/616 (96%)	-0.03	31 (5%) 27 29	30, 53, 89, 100	0

All (31) RSRZ outliers are listed below:

Mol	Chain	Res	Type	RSRZ
1	B	1283	ALA	4.4
1	A	79	LYS	3.9
1	A	169	ALA	3.5
1	A	168	ILE	3.4
1	B	1285	LYS	3.3
1	A	171	PHE	2.9
1	B	1090	SER	2.9
1	A	170	PRO	2.8
1	B	1169	ALA	2.6
1	B	1019	GLU	2.6
1	B	1282	LEU	2.5
1	A	106	SER	2.5
1	B	1082	LYS	2.5
1	B	1161	MET	2.5
1	B	1162	LEU	2.4
1	B	1187	GLN	2.4
1	A	166	THR	2.3
1	B	1266	CYS	2.3
1	B	1106	SER	2.3
1	B	1288	ILE	2.3
1	B	1264	TYR	2.2
1	B	1170	PRO	2.1
1	B	1067	GLY	2.1
1	B	1236	GLY	2.1

*Continued on next page...*

*Continued from previous page...*

Mol	Chain	Res	Type	RSRZ
1	A	173	SER	2.1
1	A	13	HIS	2.0
1	A	162	LEU	2.0
1	A	167	GLY	2.0
1	A	90	SER	2.0
1	A	118	ALA	2.0
1	B	1166	THR	2.0

## 6.2 Non-standard residues in protein, DNA, RNA chains [i](#)

There are no non-standard protein/DNA/RNA residues in this entry.

## 6.3 Carbohydrates [i](#)

There are no carbohydrates in this entry.

## 6.4 Ligands [i](#)

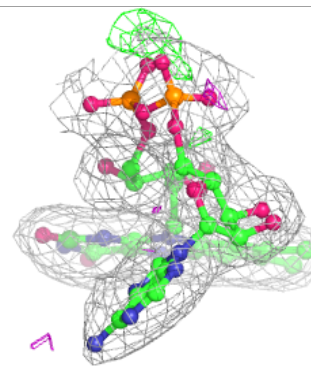
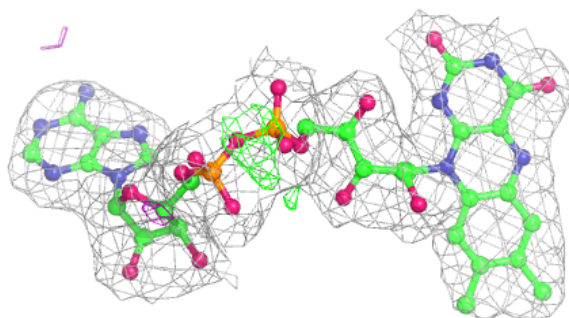
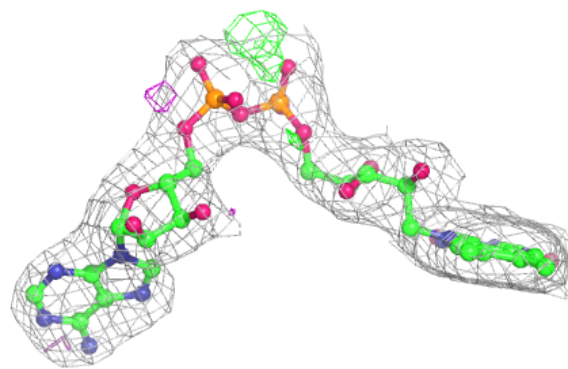
In the following table, the Atoms column lists the number of modelled atoms in the group and the number defined in the chemical component dictionary. The B-factors column lists the minimum, median, 95<sup>th</sup> percentile and maximum values of B factors of atoms in the group. The column labelled 'Q< 0.9' lists the number of atoms with occupancy less than 0.9.

Mol	Type	Chain	Res	Atoms	RSCC	RSR	B-factors( $\text{\AA}^2$ )	Q<0.9
2	FAD	A	309	53/53	0.93	0.12	28,40,67,74	0
2	FAD	B	1309	53/53	0.94	0.11	29,44,72,78	0

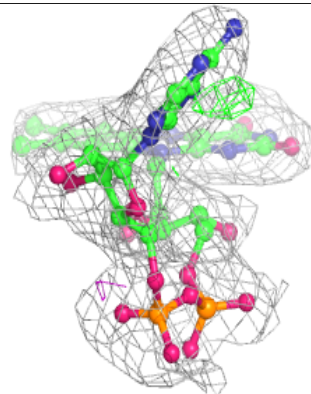
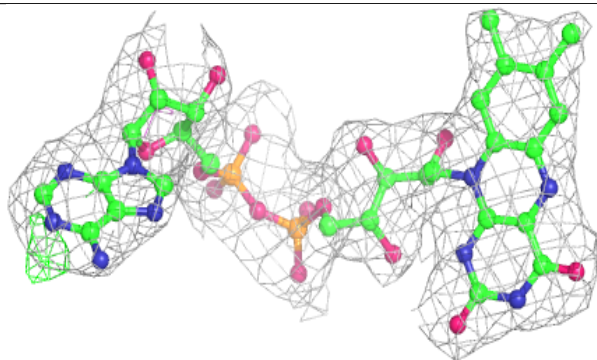
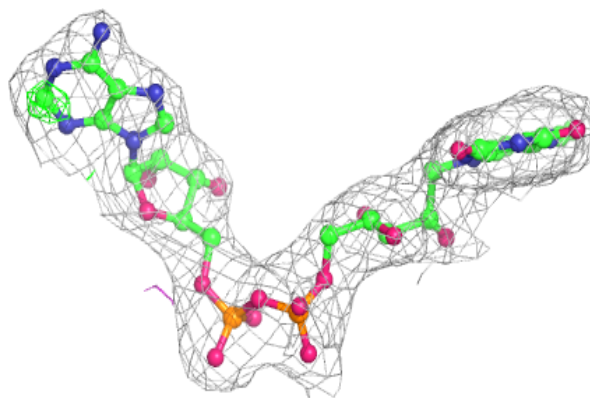
The following is a graphical depiction of the model fit to experimental electron density of all instances of the Ligand of Interest. In addition, ligands with molecular weight > 250 and outliers as shown on the geometry validation Tables will also be included. Each fit is shown from different orientation to approximate a three-dimensional view.

**Electron density around FAD A 309:**

$2mF_o-DF_c$  (at 0.7 rmsd) in gray  
 $mF_o-DF_c$  (at 3 rmsd) in purple (negative)  
and green (positive)

**Electron density around FAD B 1309:**

$2mF_o-DF_c$  (at 0.7 rmsd) in gray  
 $mF_o-DF_c$  (at 3 rmsd) in purple (negative)  
and green (positive)



## 6.5 Other polymers

There are no such residues in this entry.