



Full wwPDB X-ray Structure Validation Report ⓘ

Oct 14, 2021 – 02:13 PM EDT

PDB ID : 2QGT
Title : Crystal Structure of the Estrogen Receptor Alpha Ligand Binding Domain Complexed to an Ether Estradiol Compound
Authors : Nettles, K.W.; Bruning, J.B.; Nowak, J.; Sharma, S.K.; Hahm, J.B.; Shi, Y.; Kulp, K.; Hochberg, R.B.; Zhou, H.; Katzenellenbogen, J.A.; Katzenellenbogen, B.S.; Kim, Y.; Joachmiak, A.; Greene, G.L.
Deposited on : 2007-06-29
Resolution : 2.15 Å(reported)

This is a Full wwPDB X-ray Structure Validation Report for a publicly released PDB entry.

We welcome your comments at validation@mail.wwpdb.org

A user guide is available at

<https://www.wwpdb.org/validation/2017/XrayValidationReportHelp>

with specific help available everywhere you see the ⓘ symbol.

The following versions of software and data (see [references ⓘ](#)) were used in the production of this report:

MolProbity : 4.02b-467
Mogul : 1.8.5 (274361), CSD as541be (2020)
Xtriage (Phenix) : 1.13
EDS : 2.23.2
buster-report : 1.1.7 (2018)
Percentile statistics : 20191225.v01 (using entries in the PDB archive December 25th 2019)
Refmac : 5.8.0158
CCP4 : 7.0.044 (Gargrove)
Ideal geometry (proteins) : Engh & Huber (2001)
Ideal geometry (DNA, RNA) : Parkinson et al. (1996)
Validation Pipeline (wwPDB-VP) : 2.23.2

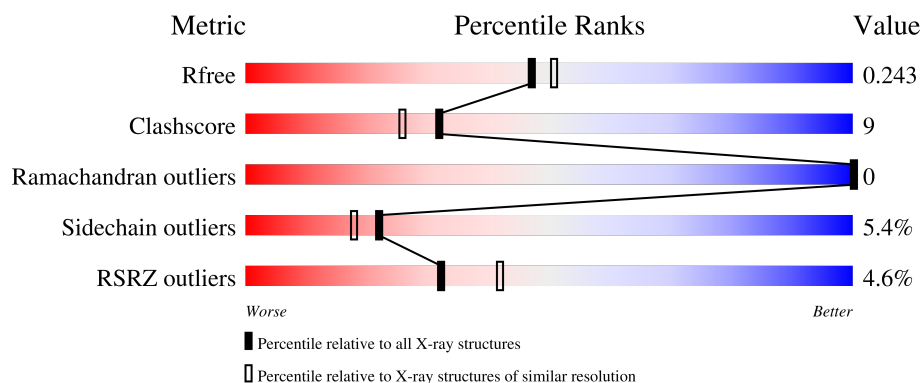
1 Overall quality at a glance

The following experimental techniques were used to determine the structure:

X-RAY DIFFRACTION

The reported resolution of this entry is 2.15 Å.

Percentile scores (ranging between 0-100) for global validation metrics of the entry are shown in the following graphic. The table shows the number of entries on which the scores are based.



Metric	Whole archive (#Entries)	Similar resolution (#Entries, resolution range(Å))
R_{free}	130704	1479 (2.16-2.16)
Clashscore	141614	1585 (2.16-2.16)
Ramachandran outliers	138981	1560 (2.16-2.16)
Sidechain outliers	138945	1559 (2.16-2.16)
RSRZ outliers	127900	1456 (2.16-2.16)

The table below summarises the geometric issues observed across the polymeric chains and their fit to the electron density. The red, orange, yellow and green segments of the lower bar indicate the fraction of residues that contain outliers for ≥ 3 , 2, 1 and 0 types of geometric quality criteria respectively. A grey segment represents the fraction of residues that are not modelled. The numeric value for each fraction is indicated below the corresponding segment, with a dot representing fractions $\leq 5\%$. The upper red bar (where present) indicates the fraction of residues that have poor fit to the electron density. The numeric value is given above the bar.

Mol	Chain	Length	Quality of chain
1	A	258	
1	B	258	
2	C	13	
2	D	13	

2 Entry composition

There are 4 unique types of molecules in this entry. The entry contains 4173 atoms, of which 0 are hydrogens and 0 are deuteriums.

In the tables below, the ZeroOcc column contains the number of atoms modelled with zero occupancy, the AltConf column contains the number of residues with at least one atom in alternate conformation and the Trace column contains the number of residues modelled with at most 2 atoms.

- Molecule 1 is a protein called Estrogen receptor.

Mol	Chain	Residues	Atoms					ZeroOcc	AltConf	Trace
1	A	237	Total	C	N	O	S	0	1	0
			1897	1215	326	337	19			
1	B	239	Total	C	N	O	S	0	2	0
			1910	1222	324	345	19			

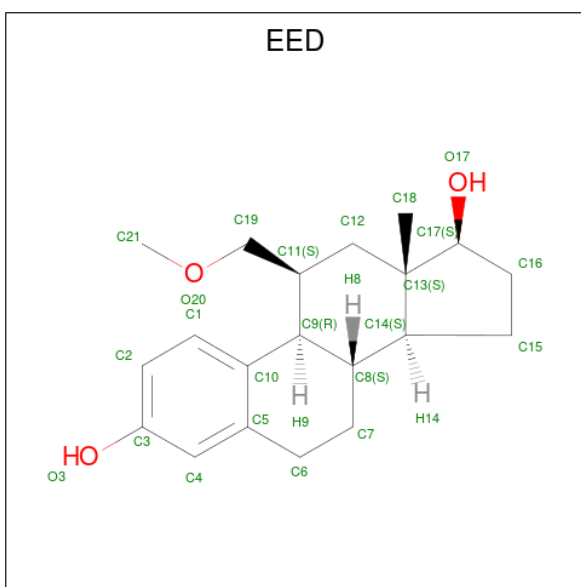
There are 4 discrepancies between the modelled and reference sequences:

Chain	Residue	Modelled	Actual	Comment	Reference
A	297	SER	-	expression tag	UNP P03372
A	537	SER	TYR	engineered mutation	UNP P03372
B	297	SER	-	expression tag	UNP P03372
B	537	SER	TYR	engineered mutation	UNP P03372

- Molecule 2 is a protein called Nuclear receptor coactivator 2.

Mol	Chain	Residues	Atoms				ZeroOcc	AltConf	Trace
2	C	10	Total	C	N	O	0	0	0
			85	54	17	14			
2	D	12	Total	C	N	O	0	0	0
			101	63	21	17			

- Molecule 3 is (9BETA,11ALPHA,13ALPHA,14BETA,17ALPHA)-11-(METHOXYMETHYL)ESTRA-1(10),2,4-TRIENE-3,17-DIOL (three-letter code: EED) (formula: C₂₀H₂₈O₃).



Mol	Chain	Residues	Atoms			ZeroOcc	AltConf
3	A	1	Total	C	O	0	0
			23	20	3		
3	B	1	Total	C	O	0	0
			23	20	3		

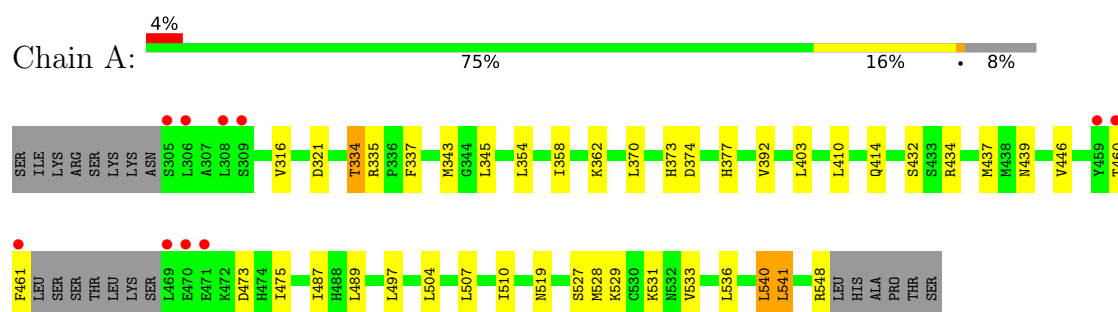
- Molecule 4 is water.

Mol	Chain	Residues	Atoms		ZeroOcc	AltConf
4	A	76	Total	O	0	0
			76	76		
4	B	57	Total	O	0	0
			57	57		
4	C	1	Total	O	0	0
			1	1		

3 Residue-property plots [i](#)

These plots are drawn for all protein, RNA, DNA and oligosaccharide chains in the entry. The first graphic for a chain summarises the proportions of the various outlier classes displayed in the second graphic. The second graphic shows the sequence view annotated by issues in geometry and electron density. Residues are color-coded according to the number of geometric quality criteria for which they contain at least one outlier: green = 0, yellow = 1, orange = 2 and red = 3 or more. A red dot above a residue indicates a poor fit to the electron density ($RSRZ > 2$). Stretches of 2 or more consecutive residues without any outlier are shown as a green connector. Residues present in the sample, but not in the model, are shown in grey.

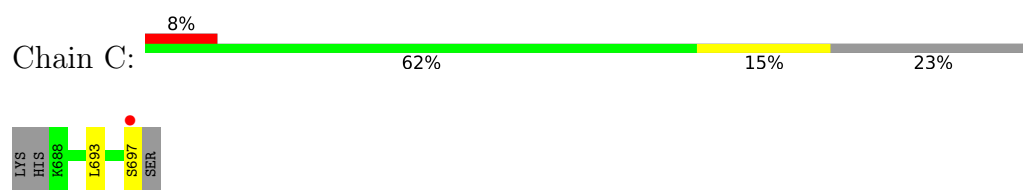
- Molecule 1: Estrogen receptor



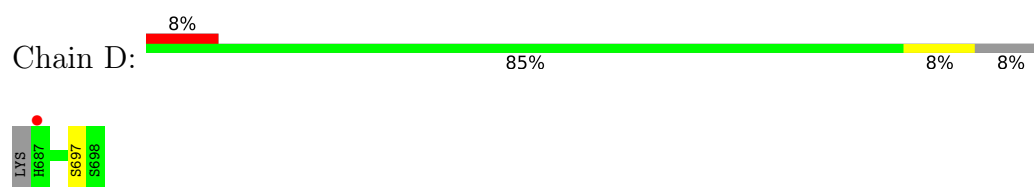
- Molecule 1: Estrogen receptor



- Molecule 2: Nuclear receptor coactivator 2



- Molecule 2: Nuclear receptor coactivator 2



4 Data and refinement statistics

Property	Value	Source
Space group	P 1 21 1	Depositor
Cell constants a, b, c, α , β , γ	58.17Å 83.71Å 56.01Å 90.00° 108.45° 90.00°	Depositor
Resolution (Å)	20.00 – 2.15 19.92 – 2.12	Depositor EDS
% Data completeness (in resolution range)	96.9 (20.00-2.15) 96.9 (19.92-2.12)	Depositor EDS
R_{merge}	0.12	Depositor
R_{sym}	0.12	Depositor
$\langle I/\sigma(I) \rangle$ ¹	1.32 (at 2.11Å)	Xtriage
Refinement program	REFMAC 5.2.0019	Depositor
R, R_{free}	0.192 , 0.240 0.194 , 0.243	Depositor DCC
R_{free} test set	1431 reflections (5.07%)	wwPDB-VP
Wilson B-factor (Å ²)	22.4	Xtriage
Anisotropy	0.173	Xtriage
Bulk solvent k_{sol} (e/Å ³), B_{sol} (Å ²)	0.35 , 46.5	EDS
L-test for twinning ²	$\langle L \rangle = 0.49$, $\langle L^2 \rangle = 0.33$	Xtriage
Estimated twinning fraction	0.026 for l,-k,h	Xtriage
F_o, F_c correlation	0.94	EDS
Total number of atoms	4173	wwPDB-VP
Average B, all atoms (Å ²)	20.0	wwPDB-VP

Xtriage's analysis on translational NCS is as follows: *The largest off-origin peak in the Patterson function is 7.14% of the height of the origin peak. No significant pseudotranslation is detected.*

¹Intensities estimated from amplitudes.

²Theoretical values of $\langle |L| \rangle$, $\langle L^2 \rangle$ for acentric reflections are 0.5, 0.333 respectively for untwinned datasets, and 0.375, 0.2 for perfectly twinned datasets.

5 Model quality [i](#)

5.1 Standard geometry [i](#)

Bond lengths and bond angles in the following residue types are not validated in this section: EED

The Z score for a bond length (or angle) is the number of standard deviations the observed value is removed from the expected value. A bond length (or angle) with $|Z| > 5$ is considered an outlier worth inspection. RMSZ is the root-mean-square of all Z scores of the bond lengths (or angles).

Mol	Chain	Bond lengths		Bond angles	
		RMSZ	$\# Z > 5$	RMSZ	$\# Z > 5$
1	A	0.53	0/1937	0.61	0/2617
1	B	0.51	0/1953	0.57	0/2638
2	C	0.49	0/85	0.67	0/112
2	D	0.43	0/102	0.60	0/135
All	All	0.52	0/4077	0.59	0/5502

There are no bond length outliers.

There are no bond angle outliers.

There are no chirality outliers.

There are no planarity outliers.

5.2 Too-close contacts [i](#)

In the following table, the Non-H and H(model) columns list the number of non-hydrogen atoms and hydrogen atoms in the chain respectively. The H(added) column lists the number of hydrogen atoms added and optimized by MolProbity. The Clashes column lists the number of clashes within the asymmetric unit, whereas Symm-Clashes lists symmetry-related clashes.

Mol	Chain	Non-H	H(model)	H(added)	Clashes	Symm-Clashes
1	A	1897	0	1939	41	0
1	B	1910	0	1948	32	0
2	C	85	0	93	6	0
2	D	101	0	105	1	0
3	A	23	0	28	1	0
3	B	23	0	28	2	0
4	A	76	0	0	2	0
4	B	57	0	0	2	0
4	C	1	0	0	0	0
All	All	4173	0	4141	73	0

The all-atom clashscore is defined as the number of clashes found per 1000 atoms (including hydrogen atoms). The all-atom clashscore for this structure is 9.

All (73) close contacts within the same asymmetric unit are listed below, sorted by their clash magnitude.

Atom-1	Atom-2	Interatomic distance (Å)	Clash overlap (Å)
1:A:519:ASN:HD22	1:B:519:ASN:HD22	1.00	0.99
1:A:519:ASN:HD22	1:B:519:ASN:ND2	1.59	0.99
1:A:519:ASN:ND2	1:B:519:ASN:HD22	1.65	0.94
1:A:377:HIS:NE2	1:A:460:THR:HG23	1.83	0.93
1:B:454:LEU:HB3	1:B:475:ILE:HD11	1.51	0.90
1:A:536:LEU:HB2	1:A:541:LEU:HD13	1.58	0.85
1:A:528:MET:HE3	1:A:533:VAL:HG11	1.58	0.85
3:B:700:EED:H183	3:B:700:EED:H191	1.58	0.84
1:A:362:LYS:NZ	2:C:697:SER:HB3	1.97	0.79
1:A:528:MET:CE	1:A:533:VAL:HG11	2.14	0.77
1:B:330[B]:GLU:OE1	4:B:64:HOH:O	2.03	0.77
1:A:343:MET:HG3	1:A:528:MET:HE2	1.68	0.76
1:B:472:LYS:O	1:B:475:ILE:HG22	1.89	0.71
1:A:487:ILE:HD11	1:A:504:LEU:HD22	1.72	0.71
1:A:343:MET:HG3	1:A:528:MET:CE	2.21	0.70
1:B:475:ILE:HD13	1:B:479:LEU:CD2	2.23	0.68
1:A:527:SER:O	1:A:531:LYS:HG2	1.93	0.67
1:B:528:MET:SD	1:B:533:VAL:HG21	2.39	0.63
1:B:377:HIS:CE1	1:B:460:THR:HB	2.36	0.61
1:A:377:HIS:CE1	1:A:460:THR:HG23	2.36	0.59
1:A:362:LYS:HZ1	2:C:697:SER:HB3	1.67	0.59
1:A:434:ARG:HD2	1:A:437:MET:HE3	1.85	0.57
1:B:475:ILE:O	1:B:479:LEU:HD23	2.05	0.57
1:B:459:TYR:OH	4:B:5:HOH:O	2.09	0.56
1:A:334:THR:HG23	1:A:335:ARG:HG2	1.87	0.56
1:A:358:ILE:CD1	2:C:693:LEU:HD23	2.36	0.55
3:A:701:EED:H183	3:A:701:EED:H191	1.88	0.55
1:B:339:GLU:HG3	1:B:418:VAL:HA	1.88	0.55
1:B:473:ASP:O	1:B:477:ARG:HG3	2.07	0.53
1:A:334:THR:CG2	1:A:335:ARG:HG2	2.38	0.53
1:A:460:THR:HG22	4:A:9:HOH:O	2.08	0.53
1:B:475:ILE:O	1:B:479:LEU:CD2	2.57	0.53
1:B:538:ASP:O	1:B:542:GLU:HG3	2.09	0.53
1:A:528:MET:HE3	1:A:533:VAL:CG1	2.35	0.52
1:B:458:VAL:HG13	1:B:459:TYR:CD1	2.44	0.52
1:B:308:LEU:HD21	1:B:477:ARG:HD3	1.92	0.52
1:B:454:LEU:HB3	1:B:475:ILE:CD1	2.32	0.51

Continued on next page...

Continued from previous page...

Atom-1	Atom-2	Interatomic distance (Å)	Clash overlap (Å)
1:A:343:MET:CG	1:A:528:MET:HE2	2.38	0.51
1:B:354:LEU:O	1:B:358:ILE:HD13	2.11	0.51
3:B:700:EED:H191	3:B:700:EED:C18	2.37	0.50
1:A:370:LEU:HD11	1:A:475:ILE:HD11	1.95	0.49
1:B:434:ARG:HD2	1:B:437:MET:HE3	1.94	0.49
1:A:373[B]:HIS:CD2	1:A:374:ASP:OD1	2.66	0.49
1:B:401:LYS:HD3	1:B:409:LEU:HG	1.95	0.48
1:B:475:ILE:CD1	1:B:479:LEU:HD21	2.43	0.48
1:A:316:VAL:HG21	1:A:489:LEU:HD21	1.95	0.48
1:A:362:LYS:CE	2:C:697:SER:HB3	2.44	0.47
1:A:354:LEU:CD1	1:A:540:LEU:CD1	2.93	0.47
1:B:510:ILE:HG22	1:B:514:ILE:CD1	2.46	0.46
1:B:510:ILE:HG22	1:B:514:ILE:HD12	1.98	0.46
1:B:362:LYS:HD3	2:D:697:SER:OG	2.15	0.46
1:A:410:LEU:HA	1:A:414:GLN:OE1	2.16	0.46
1:A:362:LYS:HZ3	2:C:697:SER:HB3	1.81	0.45
1:A:531:LYS:HG3	1:A:533:VAL:HG23	2.00	0.44
1:B:306:LEU:HD12	1:B:307:ALA:N	2.33	0.44
1:B:434:ARG:CD	1:B:437:MET:HE3	2.47	0.43
1:B:475:ILE:CD1	1:B:479:LEU:CD2	2.93	0.43
1:A:507:LEU:O	1:A:510:ILE:HB	2.19	0.42
1:A:392:VAL:HG13	1:A:432:SER:HA	2.01	0.42
1:B:306:LEU:HD12	1:B:307:ALA:H	1.84	0.42
1:A:337:PHE:HE1	1:A:345:LEU:HD12	1.85	0.42
1:A:403:LEU:O	1:A:403:LEU:HD23	2.20	0.42
1:A:540:LEU:HD12	1:A:540:LEU:HA	1.86	0.42
1:A:446:VAL:O	4:A:102:HOH:O	2.22	0.41
1:B:475:ILE:HD13	1:B:475:ILE:O	2.19	0.41
1:A:528:MET:HE1	1:A:533:VAL:HG11	1.95	0.41
1:A:373[B]:HIS:HD2	1:A:374:ASP:OD1	2.03	0.41
1:A:343:MET:HG3	1:A:528:MET:HE3	1.99	0.41
1:A:354:LEU:HD12	1:A:540:LEU:CD1	2.51	0.41
1:B:496:THR:O	1:B:500:GLN:HG3	2.21	0.41
1:B:497:LEU:HD23	1:B:497:LEU:HA	1.93	0.41
1:A:358:ILE:HD13	2:C:693:LEU:HD23	2.03	0.40

There are no symmetry-related clashes.

5.3 Torsion angles [i](#)

5.3.1 Protein backbone [i](#)

In the following table, the Percentiles column shows the percent Ramachandran outliers of the chain as a percentile score with respect to all X-ray entries followed by that with respect to entries of similar resolution.

The Analysed column shows the number of residues for which the backbone conformation was analysed, and the total number of residues.

Mol	Chain	Analysed	Favoured	Allowed	Outliers	Percentiles	
1	A	234/258 (91%)	231 (99%)	3 (1%)	0	100	100
1	B	237/258 (92%)	232 (98%)	5 (2%)	0	100	100
2	C	8/13 (62%)	7 (88%)	1 (12%)	0	100	100
2	D	10/13 (77%)	10 (100%)	0	0	100	100
All	All	489/542 (90%)	480 (98%)	9 (2%)	0	100	100

There are no Ramachandran outliers to report.

5.3.2 Protein sidechains [i](#)

In the following table, the Percentiles column shows the percent sidechain outliers of the chain as a percentile score with respect to all X-ray entries followed by that with respect to entries of similar resolution.

The Analysed column shows the number of residues for which the sidechain conformation was analysed, and the total number of residues.

Mol	Chain	Analysed	Rotameric	Outliers	Percentiles	
1	A	213/233 (91%)	203 (95%)	10 (5%)	26	23
1	B	216/233 (93%)	201 (93%)	15 (7%)	15	10
2	C	10/13 (77%)	10 (100%)	0	100	100
2	D	12/13 (92%)	12 (100%)	0	100	100
All	All	451/492 (92%)	426 (94%)	25 (6%)	22	17

All (25) residues with a non-rotameric sidechain are listed below:

Mol	Chain	Res	Type
1	A	321	ASP
1	A	334	THR

Continued on next page...

Continued from previous page...

Mol	Chain	Res	Type
1	A	439	ASN
1	A	461	PHE
1	A	473	ASP
1	A	497	LEU
1	A	529	LYS
1	A	540	LEU
1	A	541	LEU
1	A	548	ARG
1	B	306	LEU
1	B	317	SER
1	B	330[A]	GLU
1	B	330[B]	GLU
1	B	362	LYS
1	B	396	MET
1	B	440	LEU
1	B	460	THR
1	B	469	LEU
1	B	475	ILE
1	B	482	ILE
1	B	531	LYS
1	B	534	VAL
1	B	540	LEU
1	B	545	ASP

Sometimes sidechains can be flipped to improve hydrogen bonding and reduce clashes. All (8) such sidechains are listed below:

Mol	Chain	Res	Type
1	A	398	HIS
1	A	439	ASN
1	A	513	HIS
1	A	532	ASN
1	B	513	HIS
1	B	519	ASN
1	B	532	ASN
2	C	691	HIS

5.3.3 RNA ⓘ

There are no RNA molecules in this entry.

5.4 Non-standard residues in protein, DNA, RNA chains [i](#)

There are no non-standard protein/DNA/RNA residues in this entry.

5.5 Carbohydrates [i](#)

There are no monosaccharides in this entry.

5.6 Ligand geometry [i](#)

2 ligands are modelled in this entry.

In the following table, the Counts columns list the number of bonds (or angles) for which Mogul statistics could be retrieved, the number of bonds (or angles) that are observed in the model and the number of bonds (or angles) that are defined in the Chemical Component Dictionary. The Link column lists molecule types, if any, to which the group is linked. The Z score for a bond length (or angle) is the number of standard deviations the observed value is removed from the expected value. A bond length (or angle) with $|Z| > 2$ is considered an outlier worth inspection. RMSZ is the root-mean-square of all Z scores of the bond lengths (or angles).

Mol	Type	Chain	Res	Link	Bond lengths			Bond angles		
					Counts	RMSZ	$\# Z > 2$	Counts	RMSZ	$\# Z > 2$
3	EED	B	700	-	26,26,26	0.97	0	35,40,40	1.57	7 (20%)
3	EED	A	701	-	26,26,26	0.82	1 (3%)	35,40,40	1.50	6 (17%)

In the following table, the Chirals column lists the number of chiral outliers, the number of chiral centers analysed, the number of these observed in the model and the number defined in the Chemical Component Dictionary. Similar counts are reported in the Torsion and Rings columns. '-' means no outliers of that kind were identified.

Mol	Type	Chain	Res	Link	Chirals	Torsions	Rings
3	EED	B	700	-	-	0/3/46/46	0/4/4/4
3	EED	A	701	-	-	0/3/46/46	0/4/4/4

All (1) bond length outliers are listed below:

Mol	Chain	Res	Type	Atoms	Z	Observed(Å)	Ideal(Å)
3	A	701	EED	C6-C5	2.26	1.55	1.51

All (13) bond angle outliers are listed below:

Mol	Chain	Res	Type	Atoms	Z	Observed(°)	Ideal(°)
3	B	700	EED	C16-C17-C13	-3.70	101.59	104.53

Continued on next page...

Continued from previous page...

Mol	Chain	Res	Type	Atoms	Z	Observed(°)	Ideal(°)
3	B	700	EED	C6-C5-C10	3.45	126.29	121.13
3	B	700	EED	C3-C4-C5	3.20	124.39	120.83
3	A	701	EED	C6-C5-C10	3.19	125.91	121.13
3	A	701	EED	C13-C14-C8	-3.13	109.74	114.38
3	A	701	EED	C3-C4-C5	3.01	124.17	120.83
3	A	701	EED	C7-C6-C5	-2.69	107.77	112.87
3	A	701	EED	C16-C17-C13	-2.39	102.63	104.53
3	A	701	EED	O20-C19-C11	-2.36	103.96	109.71
3	B	700	EED	C7-C8-C9	2.23	112.15	109.63
3	B	700	EED	C16-C15-C14	-2.20	100.77	105.13
3	B	700	EED	C4-C5-C10	-2.01	116.90	119.50
3	B	700	EED	C13-C14-C8	-2.00	111.42	114.38

There are no chirality outliers.

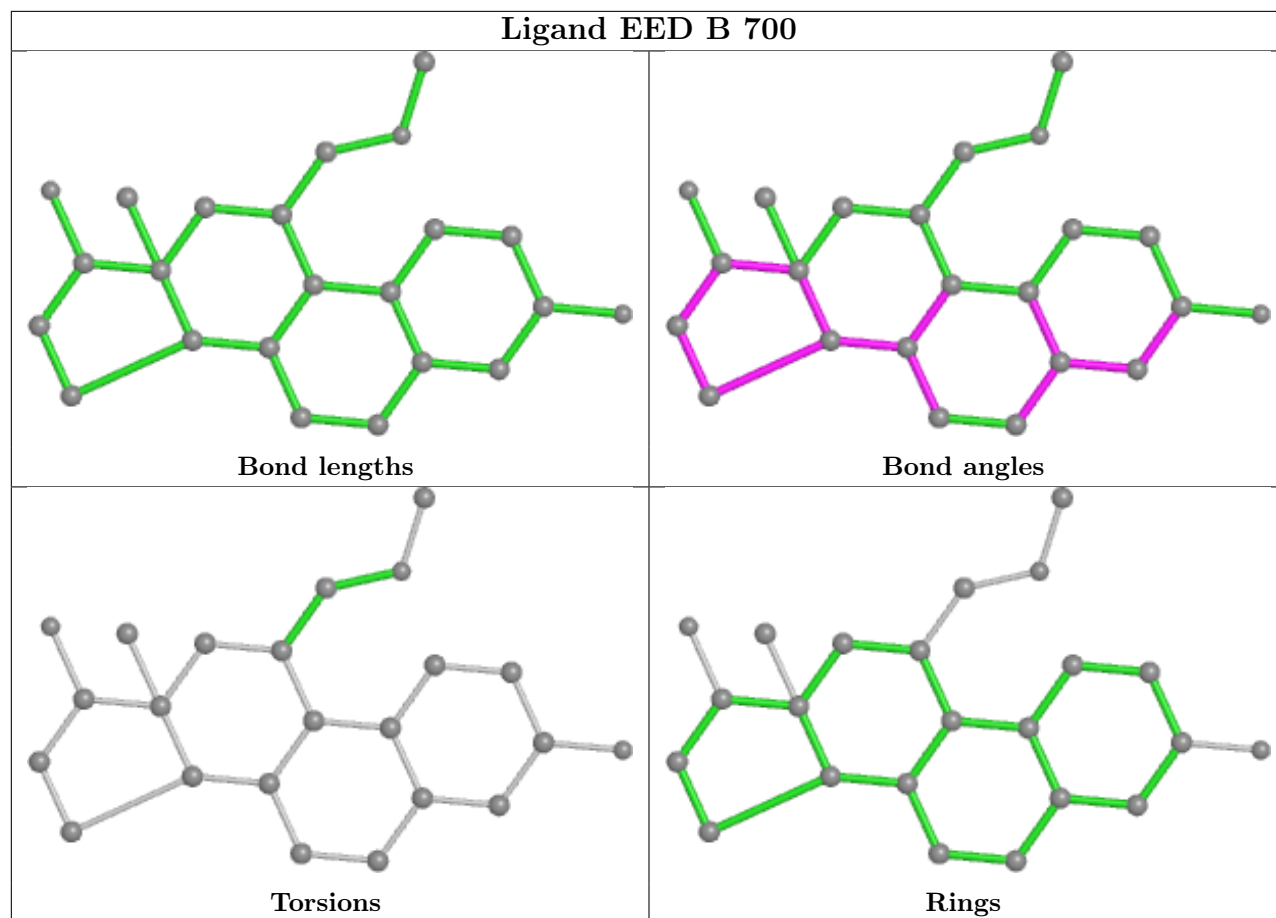
There are no torsion outliers.

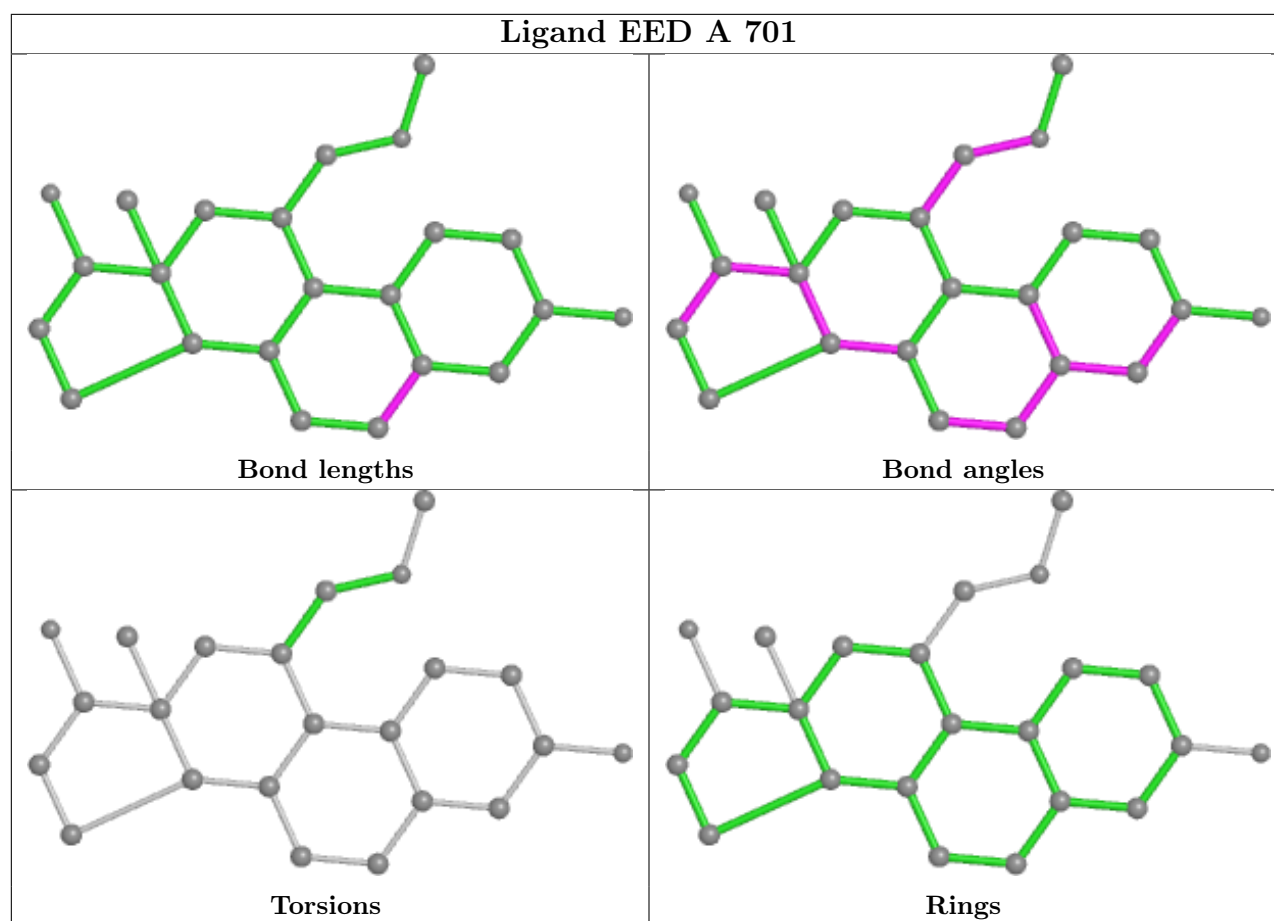
There are no ring outliers.

2 monomers are involved in 3 short contacts:

Mol	Chain	Res	Type	Clashes	Symm-Clashes
3	B	700	EED	2	0
3	A	701	EED	1	0

The following is a two-dimensional graphical depiction of Mogul quality analysis of bond lengths, bond angles, torsion angles, and ring geometry for all instances of the Ligand of Interest. In addition, ligands with molecular weight > 250 and outliers as shown on the validation Tables will also be included. For torsion angles, if less than 5% of the Mogul distribution of torsion angles is within 10 degrees of the torsion angle in question, then that torsion angle is considered an outlier. Any bond that is central to one or more torsion angles identified as an outlier by Mogul will be highlighted in the graph. For rings, the root-mean-square deviation (RMSD) between the ring in question and similar rings identified by Mogul is calculated over all ring torsion angles. If the average RMSD is greater than 60 degrees and the minimal RMSD between the ring in question and any Mogul-identified rings is also greater than 60 degrees, then that ring is considered an outlier. The outliers are highlighted in purple. The color gray indicates Mogul did not find sufficient equivalents in the CSD to analyse the geometry.





5.7 Other polymers [i](#)

There are no such residues in this entry.

5.8 Polymer linkage issues [i](#)

There are no chain breaks in this entry.

6 Fit of model and data ⓘ

6.1 Protein, DNA and RNA chains ⓘ

In the following table, the column labelled ‘#RSRZ > 2’ contains the number (and percentage) of RSRZ outliers, followed by percent RSRZ outliers for the chain as percentile scores relative to all X-ray entries and entries of similar resolution. The OWAB column contains the minimum, median, 95th percentile and maximum values of the occupancy-weighted average B-factor per residue. The column labelled ‘Q < 0.9’ lists the number of (and percentage) of residues with an average occupancy less than 0.9.

Mol	Chain	Analysed	<RSRZ>	#RSRZ>2	OWAB(Å ²)	Q<0.9
1	A	237/258 (91%)	-0.07	10 (4%) 36 45	9, 17, 41, 66	0
1	B	239/258 (92%)	0.08	11 (4%) 32 42	8, 18, 43, 75	0
2	C	10/13 (76%)	0.30	1 (10%) 7 11	17, 21, 36, 37	0
2	D	12/13 (92%)	0.88	1 (8%) 11 15	19, 25, 35, 40	0
All	All	498/542 (91%)	0.03	23 (4%) 32 42	8, 18, 41, 75	0

All (23) RSRZ outliers are listed below:

Mol	Chain	Res	Type	RSRZ
1	B	469	LEU	7.1
1	B	459	TYR	5.9
1	B	461	PHE	4.2
1	A	471	GLU	4.1
1	A	306	LEU	3.8
1	A	469	LEU	3.8
1	A	460	THR	3.5
2	D	687	HIS	3.3
1	B	471	GLU	3.2
1	B	305	SER	3.2
2	C	697	SER	3.2
1	B	335	ARG	3.1
1	B	336	PRO	2.9
1	B	334	THR	2.7
1	A	461	PHE	2.7
1	A	459	TYR	2.6
1	B	460	THR	2.6
1	A	309	SER	2.4
1	B	472	LYS	2.4
1	A	305	SER	2.3
1	A	470	GLU	2.3

Continued on next page...

Continued from previous page...

Mol	Chain	Res	Type	RSRZ
1	A	308	LEU	2.2
1	B	308	LEU	2.0

6.2 Non-standard residues in protein, DNA, RNA chains [i](#)

There are no non-standard protein/DNA/RNA residues in this entry.

6.3 Carbohydrates [i](#)

There are no monosaccharides in this entry.

6.4 Ligands [i](#)

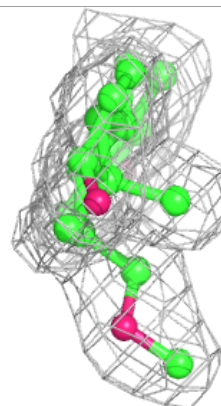
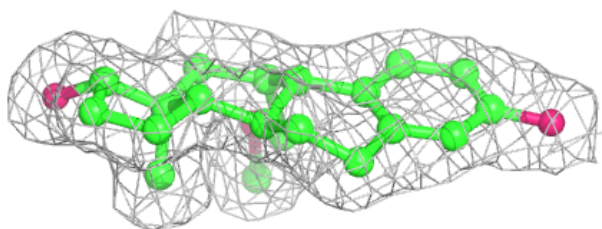
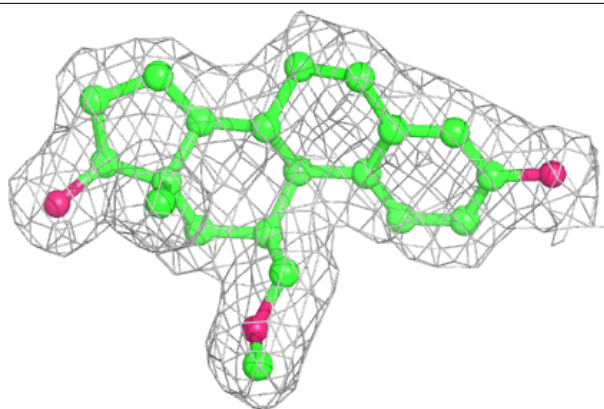
In the following table, the Atoms column lists the number of modelled atoms in the group and the number defined in the chemical component dictionary. The B-factors column lists the minimum, median, 95th percentile and maximum values of B factors of atoms in the group. The column labelled 'Q < 0.9' lists the number of atoms with occupancy less than 0.9.

Mol	Type	Chain	Res	Atoms	RSCC	RSR	B-factors(\AA^2)	Q<0.9
3	EED	A	701	23/23	0.96	0.10	9,11,14,15	0
3	EED	B	700	23/23	0.96	0.13	12,15,17,21	0

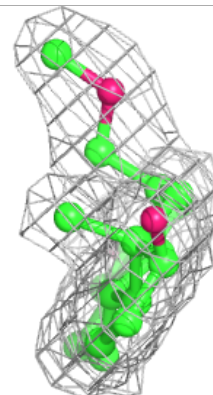
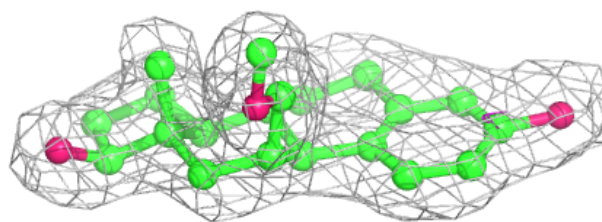
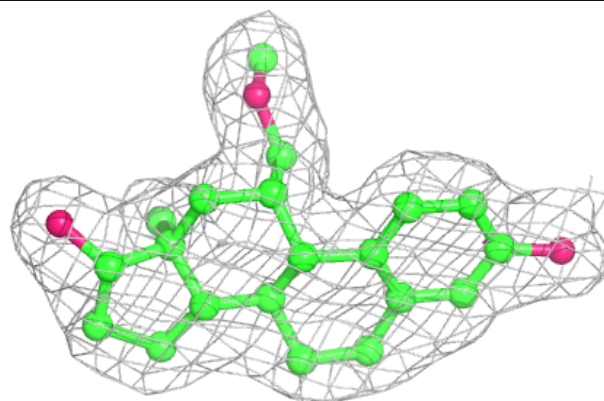
The following is a graphical depiction of the model fit to experimental electron density of all instances of the Ligand of Interest. In addition, ligands with molecular weight > 250 and outliers as shown on the geometry validation Tables will also be included. Each fit is shown from different orientation to approximate a three-dimensional view.

Electron density around EED A 701:

$2mF_o-DF_c$ (at 0.7 rmsd) in gray
 mF_o-DF_c (at 3 rmsd) in purple (negative)
and green (positive)

**Electron density around EED B 700:**

$2mF_o-DF_c$ (at 0.7 rmsd) in gray
 mF_o-DF_c (at 3 rmsd) in purple (negative)
and green (positive)



6.5 Other polymers [i](#)

There are no such residues in this entry.