



Full wwPDB X-ray Structure Validation Report ⓘ

May 16, 2020 – 12:23 pm BST

PDB ID : 3QGG
Title : Crystal structure of the hepatitis C virus NS5B RNA-dependent RNA polymerase complex with (2E)-3-(4-{{(1-{{(13-cyclohexyl-6-oxo-6,7-dihydro-5H-indolo[1,2-d][1,4]benzodiazepin-10-yl)carbonyl}amino}cyclopentyl)carbonyl}amino}phenyl)prop-2-enoic acid and N-cyclopropyl-6-[(3R)-3-{[4-(trifluoromethoxy)benzyl]carbamoyl}-4-{[4-(trifluoromethoxy)phenyl]sulfonyl}]piperazin-1-yl]pyridazine-3-carboxamide
Authors : Sheriff, S.
Deposited on : 2011-01-24
Resolution : 3.22 Å(reported)

This is a Full wwPDB X-ray Structure Validation Report for a publicly released PDB entry.

We welcome your comments at validation@mail.wwpdb.org

A user guide is available at

<https://www.wwpdb.org/validation/2017/XrayValidationReportHelp>
with specific help available everywhere you see the ⓘ symbol.

The following versions of software and data (see [references ⓘ](#)) were used in the production of this report:

MolProbity	:	4.02b-467
Mogul	:	1.8.5 (274361), CSD as541be (2020)
Xtriage (Phenix)	:	1.13
EDS	:	2.11
buster-report	:	1.1.7 (2018)
Percentile statistics	:	20191225.v01 (using entries in the PDB archive December 25th 2019)
Refmac	:	5.8.0158
CCP4	:	7.0.044 (Gargrove)
Ideal geometry (proteins)	:	Engh & Huber (2001)
Ideal geometry (DNA, RNA)	:	Parkinson et al. (1996)
Validation Pipeline (wwPDB-VP)	:	2.11

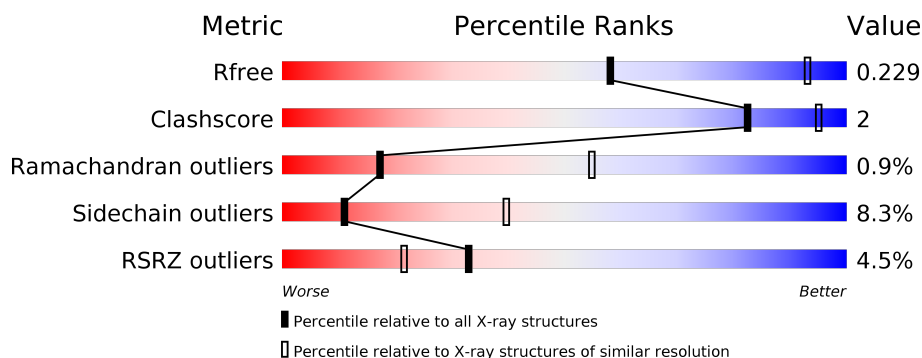
1 Overall quality at a glance

The following experimental techniques were used to determine the structure:

X-RAY DIFFRACTION

The reported resolution of this entry is 3.22 Å.

Percentile scores (ranging between 0-100) for global validation metrics of the entry are shown in the following graphic. The table shows the number of entries on which the scores are based.



Metric	Whole archive (#Entries)	Similar resolution (#Entries, resolution range(Å))
R_{free}	130704	1335 (3.24-3.20)
Clashscore	141614	1460 (3.24-3.20)
Ramachandran outliers	138981	1437 (3.24-3.20)
Sidechain outliers	138945	1436 (3.24-3.20)
RSRZ outliers	127900	1291 (3.24-3.20)

The table below summarises the geometric issues observed across the polymeric chains and their fit to the electron density. The red, orange, yellow and green segments on the lower bar indicate the fraction of residues that contain outliers for ≥ 3 , 2, 1 and 0 types of geometric quality criteria respectively. A grey segment represents the fraction of residues that are not modelled. The numeric value for each fraction is indicated below the corresponding segment, with a dot representing fractions $\leq 5\%$. The upper red bar (where present) indicates the fraction of residues that have poor fit to the electron density. The numeric value is given above the bar.

Mol	Chain	Length	Quality of chain
1	A	574	<div> <div>5%</div> <div> <div></div> <div>81%</div> <div>10%</div> <div>7%</div> </div> </div>
1	B	574	<div> <div>3%</div> <div> <div></div> <div>81%</div> <div>11%</div> <div>7%</div> </div> </div>

2 Entry composition [i](#)

There are 4 unique types of molecules in this entry. The entry contains 8448 atoms, of which 0 are hydrogens and 0 are deuteriums.

In the tables below, the ZeroOcc column contains the number of atoms modelled with zero occupancy, the AltConf column contains the number of residues with at least one atom in alternate conformation and the Trace column contains the number of residues modelled with at most 2 atoms.

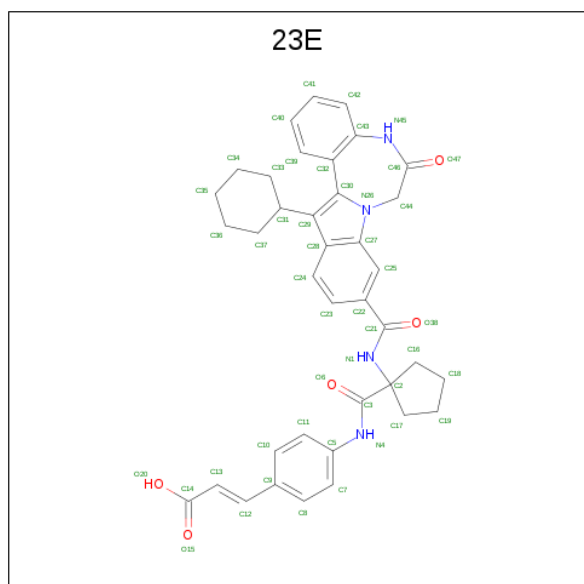
- Molecule 1 is a protein called RNA-directed RNA polymerase.

Mol	Chain	Residues	Atoms					ZeroOcc	AltConf	Trace
1	A	531	Total	C	N	O	S	0	0	0
			4096	2586	725	753	32			
1	B	536	Total	C	N	O	S	0	0	0
			4134	2607	732	764	31			

There are 2 discrepancies between the modelled and reference sequences:

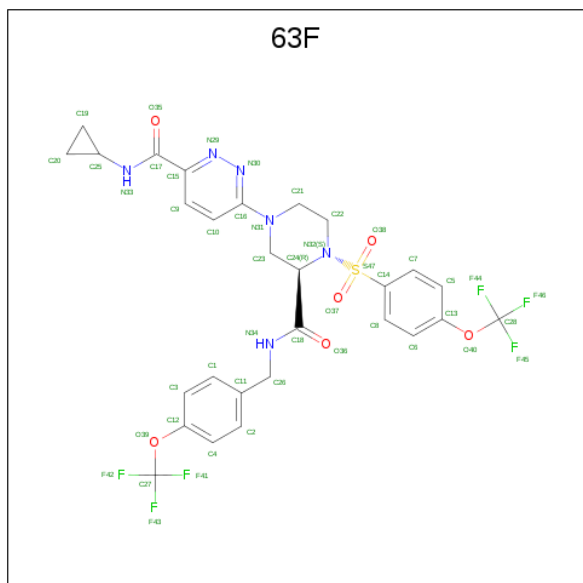
Chain	Residue	Modelled	Actual	Comment	Reference
A	0	MET	-	INITIATING METHIONINE	UNP Q9WMX2
B	0	MET	-	INITIATING METHIONINE	UNP Q9WMX2

- Molecule 2 is (2E)-3-(4-{{(1-{{(13-cyclohexyl-6-oxo-6,7-dihydro-5H-indolo[1,2-d][1,4]benzodiazepin-10-yl)carbonyl}amino}cyclopentyl)carbonyl}amino}phenyl)prop-2-enoic acid (three-letter code: 23E) (formula: C₃₈H₃₈N₄O₅).



Mol	Chain	Residues	Atoms				ZeroOcc	AltConf
2	A	1	Total	C	N	O	0	0
			47	38	4	5		
2	B	1	Total	C	N	O	0	0
			47	38	4	5		

- Molecule 3 is N-cyclopropyl-6-[(3R)-3-{[4-(trifluoromethoxy)benzyl]carbamoyl}-4-{[4-(trifluoromethoxy)phenyl]sulfonyl}piperazin-1-yl]pyridazine-3-carboxamide (three-letter code: 63F) (formula: C₂₈H₂₆F₆N₆O₆S).



Mol	Chain	Residues	Atoms						ZeroOcc	AltConf
3	A	1	Total	C	F	N	O	S	0	0
			47	28	6	6	6	1		
3	B	1	Total	C	F	N	O	S	0	0
			47	28	6	6	6	1		

- Molecule 4 is SULFATE ION (three-letter code: SO4) (formula: O₄S).

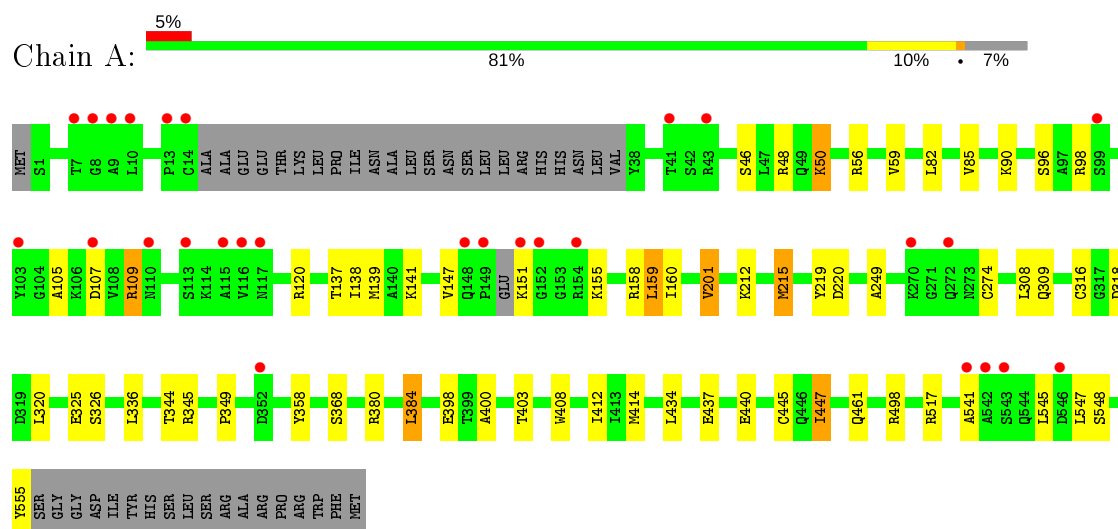


Mol	Chain	Residues	Atoms			ZeroOcc	AltConf
4	A	1	Total	O	S	0	0
			5	4	1		
4	A	1	Total	O	S	0	0
			5	4	1		
4	A	1	Total	O	S	0	0
			5	4	1		
4	B	1	Total	O	S	0	0
			5	4	1		
4	B	1	Total	O	S	0	0
			5	4	1		
4	B	1	Total	O	S	0	0
			5	4	1		

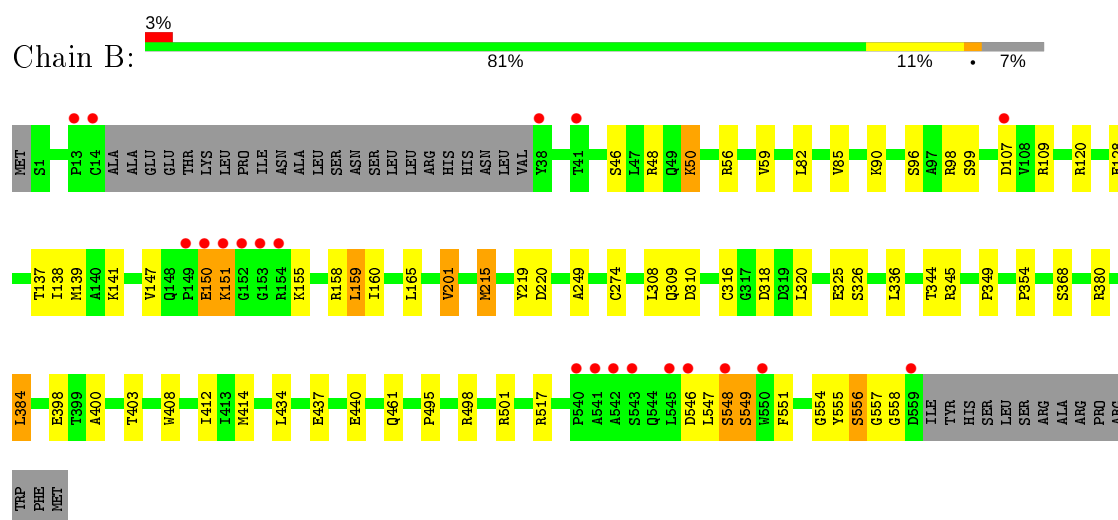
3 Residue-property plots [i](#)

These plots are drawn for all protein, RNA and DNA chains in the entry. The first graphic for a chain summarises the proportions of the various outlier classes displayed in the second graphic. The second graphic shows the sequence view annotated by issues in geometry and electron density. Residues are color-coded according to the number of geometric quality criteria for which they contain at least one outlier: green = 0, yellow = 1, orange = 2 and red = 3 or more. A red dot above a residue indicates a poor fit to the electron density ($RSRZ > 2$). Stretches of 2 or more consecutive residues without any outlier are shown as a green connector. Residues present in the sample, but not in the model, are shown in grey.

• Molecule 1: RNA-directed RNA polymerase



• Molecule 1: RNA-directed RNA polymerase



4 Data and refinement statistics

Property	Value	Source
Space group	P 21 21 21	Depositor
Cell constants a, b, c, α , β , γ	75.40 Å 90.10 Å 232.40 Å 90.00° 90.00° 90.00°	Depositor
Resolution (Å)	46.34 – 3.22 46.34 – 3.22	Depositor EDS
% Data completeness (in resolution range)	87.8 (46.34-3.22) 88.1 (46.34-3.22)	Depositor EDS
R_{merge}	0.15	Depositor
R_{sym}	(Not available)	Depositor
$\langle I/\sigma(I) \rangle$ ¹	3.66 (at 3.25 Å)	Xtriage
Refinement program	BUSTER-TNT BUSTER 2.9.4, BUSTER 2.9.4	Depositor
R, R_{free}	0.181 , 0.225 0.193 , 0.229	Depositor DCC
R_{free} test set	1006 reflections (4.34%)	wwPDB-VP
Wilson B-factor (Å ²)	59.5	Xtriage
Anisotropy	0.785	Xtriage
Bulk solvent k_{sol} (e/Å ³), B_{sol} (Å ²)	0.34 , 65.1	EDS
L-test for twinning ²	$\langle L \rangle = 0.50$, $\langle L^2 \rangle = 0.33$	Xtriage
Estimated twinning fraction	No twinning to report.	Xtriage
F_o, F_c correlation	0.93	EDS
Total number of atoms	8448	wwPDB-VP
Average B, all atoms (Å ²)	58.0	wwPDB-VP

Xtriage's analysis on translational NCS is as follows: *The largest off-origin peak in the Patterson function is 6.74% of the height of the origin peak. No significant pseudotranslation is detected.*

¹Intensities estimated from amplitudes.

²Theoretical values of $\langle |L| \rangle$, $\langle L^2 \rangle$ for acentric reflections are 0.5, 0.333 respectively for untwinned datasets, and 0.375, 0.2 for perfectly twinned datasets.

5 Model quality [i](#)

5.1 Standard geometry [i](#)

Bond lengths and bond angles in the following residue types are not validated in this section: 23E, SO4, 63F

The Z score for a bond length (or angle) is the number of standard deviations the observed value is removed from the expected value. A bond length (or angle) with $|Z| > 5$ is considered an outlier worth inspection. RMSZ is the root-mean-square of all Z scores of the bond lengths (or angles).

Mol	Chain	Bond lengths		Bond angles	
		RMSZ	# Z >5	RMSZ	# Z >5
1	A	0.47	0/4184	0.69	0/5680
1	B	0.46	0/4223	0.70	1/5732 (0.0%)
All	All	0.46	0/8407	0.69	1/11412 (0.0%)

There are no bond length outliers.

All (1) bond angle outliers are listed below:

Mol	Chain	Res	Type	Atoms	Z	Observed(°)	Ideal(°)
1	B	548	SER	C-N-CA	5.50	135.45	121.70

There are no chirality outliers.

There are no planarity outliers.

5.2 Too-close contacts [i](#)

In the following table, the Non-H and H(model) columns list the number of non-hydrogen atoms and hydrogen atoms in the chain respectively. The H(added) column lists the number of hydrogen atoms added and optimized by MolProbity. The Clashes column lists the number of clashes within the asymmetric unit, whereas Symm-Clashes lists symmetry related clashes.

Mol	Chain	Non-H	H(model)	H(added)	Clashes	Symm-Clashes
1	A	4096	0	4093	19	0
1	B	4134	0	4129	21	0
2	A	47	0	37	0	0
2	B	47	0	37	2	0
3	A	47	0	26	1	0
3	B	47	0	26	1	0
4	A	15	0	0	0	0
4	B	15	0	0	0	0

Continued on next page...

Continued from previous page...

Mol	Chain	Non-H	H(model)	H(added)	Clashes	Symm-Clashes
All	All	8448	0	8348	42	0

The all-atom clashscore is defined as the number of clashes found per 1000 atoms (including hydrogen atoms). The all-atom clashscore for this structure is 2.

All (42) close contacts within the same asymmetric unit are listed below, sorted by their clash magnitude.

Atom-1	Atom-2	Interatomic distance (Å)	Clash overlap (Å)
1:A:219:TYR:HB3	1:A:320:LEU:HD23	1.86	0.56
1:A:461:GLN:HG2	1:A:541:ALA:HB3	1.88	0.56
1:B:219:TYR:HB3	1:B:320:LEU:HD23	1.88	0.55
1:B:495:PRO:HG3	2:B:601:23E:C5	2.39	0.54
1:A:59:VAL:HB	1:A:345:ARG:HG2	1.91	0.53
1:B:59:VAL:HB	1:B:345:ARG:HG2	1.92	0.52
1:B:201:VAL:HG13	1:B:384:LEU:HD22	1.94	0.50
1:A:201:VAL:HG13	1:A:384:LEU:HD22	1.94	0.50
1:B:309:GLN:HG3	1:B:325:GLU:HB3	1.95	0.48
1:A:309:GLN:HG3	1:A:325:GLU:HB3	1.95	0.48
1:A:215:MET:HG3	1:A:358:TYR:CE2	2.50	0.46
2:B:601:23E:O6	2:B:601:23E:H7	2.14	0.46
1:B:408:TRP:HE3	1:B:412:ILE:HD12	1.81	0.45
1:A:408:TRP:HE3	1:A:412:ILE:HD12	1.81	0.45
1:A:105:ALA:O	1:A:109:ARG:HG2	2.16	0.45
1:A:139:MET:HB3	1:A:160:ILE:HG23	2.00	0.44
1:A:46:SER:O	1:A:50:LYS:HG2	2.17	0.44
1:B:548:SER:HA	1:B:551:PHE:H	1.82	0.44
1:A:344:THR:HG23	1:A:349:PRO:HB3	1.99	0.43
1:B:219:TYR:HD1	1:B:354:PRO:HG3	1.84	0.43
1:B:139:MET:HB3	1:B:160:ILE:HG23	2.01	0.43
1:A:85:VAL:HG21	1:A:120:ARG:HE	1.84	0.43
1:B:554:GLY:HA2	1:B:558:GLY:HA3	2.00	0.42
1:B:46:SER:O	1:B:50:LYS:HG2	2.18	0.42
1:A:215:MET:HB2	1:A:326:SER:HB2	2.01	0.42
1:B:215:MET:HB2	1:B:326:SER:HB2	1.99	0.42
1:B:150:GLU:HG3	1:B:151:LYS:H	1.84	0.42
1:A:48:ARG:HG3	1:A:159:LEU:HD22	2.01	0.42
1:A:82:LEU:HD13	1:A:249:ALA:HB2	2.02	0.42
1:B:82:LEU:HD13	1:B:249:ALA:HB2	2.02	0.42
1:B:85:VAL:HG21	1:B:120:ARG:HE	1.85	0.42
1:B:556:SER:H	1:B:557:GLY:HA2	1.85	0.41
1:A:141:LYS:HE3	1:A:158:ARG:HB3	2.03	0.41

Continued on next page...

Continued from previous page...

Atom-1	Atom-2	Interatomic distance (Å)	Clash overlap (Å)
1:B:48:ARG:HG3	1:B:159:LEU:HD22	2.01	0.41
1:B:344:THR:HG23	1:B:349:PRO:HB3	2.01	0.41
1:B:141:LYS:HE3	1:B:158:ARG:HB3	2.03	0.41
1:B:556:SER:N	1:B:557:GLY:HA2	2.35	0.41
1:A:109:ARG:HG2	1:A:109:ARG:H	1.77	0.41
1:A:547:LEU:HD22	3:A:602:63F:H5	2.03	0.40
1:B:99:SER:HB2	1:B:165:LEU:HB3	2.03	0.40
1:A:445:CYS:SG	1:A:447:ILE:HD11	2.62	0.40
3:B:602:63F:H10	3:B:602:63F:H23	1.91	0.40

There are no symmetry-related clashes.

5.3 Torsion angles [i](#)

5.3.1 Protein backbone [i](#)

In the following table, the Percentiles column shows the percent Ramachandran outliers of the chain as a percentile score with respect to all X-ray entries followed by that with respect to entries of similar resolution.

The Analysed column shows the number of residues for which the backbone conformation was analysed, and the total number of residues.

Mol	Chain	Analysed	Favoured	Allowed	Outliers	Percentiles	
1	A	525/574 (92%)	496 (94%)	27 (5%)	2 (0%)	34	69
1	B	532/574 (93%)	494 (93%)	31 (6%)	7 (1%)	12	46
All	All	1057/1148 (92%)	990 (94%)	58 (6%)	9 (1%)	17	55

All (9) Ramachandran outliers are listed below:

Mol	Chain	Res	Type
1	A	147	VAL
1	B	147	VAL
1	B	546	ASP
1	A	400	ALA
1	B	400	ALA
1	B	547	LEU
1	B	150	GLU
1	B	549	SER
1	B	556	SER

5.3.2 Protein sidechains ⓘ

In the following table, the Percentiles column shows the percent sidechain outliers of the chain as a percentile score with respect to all X-ray entries followed by that with respect to entries of similar resolution.

The Analysed column shows the number of residues for which the sidechain conformation was analysed, and the total number of residues.

Mol	Chain	Analysed	Rotameric	Outliers	Percentiles	
1	A	439/486 (90%)	403 (92%)	36 (8%)	11	40
1	B	443/486 (91%)	406 (92%)	37 (8%)	11	38
All	All	882/972 (91%)	809 (92%)	73 (8%)	11	40

All (73) residues with a non-rotameric sidechain are listed below:

Mol	Chain	Res	Type
1	A	50	LYS
1	A	56	ARG
1	A	90	LYS
1	A	96	SER
1	A	98	ARG
1	A	107	ASP
1	A	109	ARG
1	A	137	THR
1	A	138	ILE
1	A	151	LYS
1	A	155	LYS
1	A	159	LEU
1	A	201	VAL
1	A	212	LYS
1	A	215	MET
1	A	220	ASP
1	A	274	CYS
1	A	308	LEU
1	A	316	CYS
1	A	318	ASP
1	A	336	LEU
1	A	368	SER
1	A	380	ARG
1	A	384	LEU
1	A	398	GLU
1	A	403	THR
1	A	414	MET

Continued on next page...

Continued from previous page...

Mol	Chain	Res	Type
1	A	434	LEU
1	A	437	GLU
1	A	440	GLU
1	A	447	ILE
1	A	498	ARG
1	A	517	ARG
1	A	545	LEU
1	A	548	SER
1	A	555	TYR
1	B	50	LYS
1	B	56	ARG
1	B	90	LYS
1	B	96	SER
1	B	98	ARG
1	B	107	ASP
1	B	109	ARG
1	B	128	GLU
1	B	137	THR
1	B	138	ILE
1	B	151	LYS
1	B	155	LYS
1	B	159	LEU
1	B	201	VAL
1	B	215	MET
1	B	220	ASP
1	B	274	CYS
1	B	308	LEU
1	B	310	ASP
1	B	316	CYS
1	B	318	ASP
1	B	336	LEU
1	B	368	SER
1	B	380	ARG
1	B	384	LEU
1	B	398	GLU
1	B	403	THR
1	B	414	MET
1	B	434	LEU
1	B	437	GLU
1	B	440	GLU
1	B	461	GLN
1	B	498	ARG

Continued on next page...

Continued from previous page...

Mol	Chain	Res	Type
1	B	501	ARG
1	B	517	ARG
1	B	549	SER
1	B	555	TYR

Some sidechains can be flipped to improve hydrogen bonding and reduce clashes. All (2) such sidechains are listed below:

Mol	Chain	Res	Type
1	A	309	GLN
1	B	461	GLN

5.3.3 RNA [i](#)

There are no RNA molecules in this entry.

5.4 Non-standard residues in protein, DNA, RNA chains [i](#)

There are no non-standard protein/DNA/RNA residues in this entry.

5.5 Carbohydrates [i](#)

There are no carbohydrates in this entry.

5.6 Ligand geometry [i](#)

10 ligands are modelled in this entry.

In the following table, the Counts columns list the number of bonds (or angles) for which Mogul statistics could be retrieved, the number of bonds (or angles) that are observed in the model and the number of bonds (or angles) that are defined in the Chemical Component Dictionary. The Link column lists molecule types, if any, to which the group is linked. The Z score for a bond length (or angle) is the number of standard deviations the observed value is removed from the expected value. A bond length (or angle) with $|Z| > 2$ is considered an outlier worth inspection. RMSZ is the root-mean-square of all Z scores of the bond lengths (or angles).

Mol	Type	Chain	Res	Link	Bond lengths			Bond angles		
					Counts	RMSZ	$\# Z > 2$	Counts	RMSZ	$\# Z > 2$
4	SO4	A	659	-	4,4,4	0.27	0	6,6,6	0.22	0
2	23E	B	601	-	44,53,53	1.81	3 (6%)	57,77,77	1.07	5 (8%)

Mol	Type	Chain	Res	Link	Bond lengths			Bond angles		
					Counts	RMSZ	# Z > 2	Counts	RMSZ	# Z > 2
4	SO4	B	657	-	4,4,4	0.20	0	6,6,6	0.19	0
4	SO4	B	652	-	4,4,4	0.32	0	6,6,6	0.19	0
3	63F	B	602	-	51,51,51	1.56	7 (13%)	74,76,76	1.08	6 (8%)
3	63F	A	602	-	51,51,51	1.66	7 (13%)	74,76,76	1.09	6 (8%)
4	SO4	B	651	-	4,4,4	0.37	0	6,6,6	0.12	0
2	23E	A	601	-	44,53,53	1.75	2 (4%)	57,77,77	1.11	4 (7%)
4	SO4	A	653	-	4,4,4	0.59	0	6,6,6	0.31	0
4	SO4	A	652	-	4,4,4	0.24	0	6,6,6	0.14	0

In the following table, the Chirals column lists the number of chiral outliers, the number of chiral centers analysed, the number of these observed in the model and the number defined in the Chemical Component Dictionary. Similar counts are reported in the Torsion and Rings columns. '-' means no outliers of that kind were identified.

Mol	Type	Chain	Res	Link	Chirals	Torsions	Rings
3	63F	B	602	-	-	0/43/58/58	0/5/5/5
2	23E	A	601	-	-	0/22/57/57	0/6/7/7
3	63F	A	602	-	-	7/43/58/58	0/5/5/5
2	23E	B	601	-	-	0/22/57/57	0/6/7/7

All (19) bond length outliers are listed below:

Mol	Chain	Res	Type	Atoms	Z	Observed(Å)	Ideal(Å)
2	A	601	23E	C29-C28	9.34	1.50	1.40
2	B	601	23E	C29-C28	9.26	1.50	1.40
3	A	602	63F	S47-N32	6.93	1.74	1.63
3	B	602	63F	S47-N32	5.72	1.72	1.63
3	A	602	63F	O37-S47	3.78	1.47	1.43
2	B	601	23E	C44-N26	-3.50	1.45	1.48
3	B	602	63F	O37-S47	3.45	1.47	1.43
3	B	602	63F	O38-S47	3.27	1.47	1.43
3	A	602	63F	O38-S47	3.06	1.46	1.43
3	A	602	63F	C16-N30	2.54	1.37	1.32
3	B	602	63F	C9-C15	2.33	1.43	1.39
2	B	601	23E	C25-C22	2.29	1.41	1.37
2	A	601	23E	C25-C22	2.13	1.41	1.37
3	A	602	63F	C25-N33	-2.11	1.42	1.46
3	B	602	63F	C16-N30	2.10	1.36	1.32
3	A	602	63F	C4-C12	2.05	1.42	1.38
3	A	602	63F	C5-C13	2.03	1.42	1.38
3	B	602	63F	C3-C12	2.03	1.42	1.38

Continued on next page...

Continued from previous page...

Mol	Chain	Res	Type	Atoms	Z	Observed(Å)	Ideal(Å)
3	B	602	63F	C6-C13	2.01	1.42	1.38

All (21) bond angle outliers are listed below:

Mol	Chain	Res	Type	Atoms	Z	Observed(°)	Ideal(°)
3	B	602	63F	C26-N34-C18	4.12	128.26	122.34
2	B	601	23E	C23-C24-C28	-3.16	116.73	121.13
2	A	601	23E	C23-C24-C28	-3.16	116.74	121.13
3	B	602	63F	C21-C22-N32	3.11	111.55	108.96
3	A	602	63F	C26-N34-C18	2.93	126.56	122.34
3	A	602	63F	C21-C22-N32	2.88	111.36	108.96
3	A	602	63F	C21-N31-C16	2.69	126.62	120.39
3	A	602	63F	C10-C16-N30	-2.61	119.97	123.86
3	A	602	63F	C16-N30-N29	2.57	121.60	118.97
2	B	601	23E	C5-N4-C3	-2.51	122.22	126.78
2	B	601	23E	C16-C2-C3	2.51	116.67	110.67
2	B	601	23E	O47-C46-C44	-2.40	116.78	121.72
3	B	602	63F	C21-N31-C16	2.33	125.80	120.39
3	B	602	63F	C16-N30-N29	2.27	121.29	118.97
3	B	602	63F	C14-S47-N32	-2.26	103.33	107.36
2	B	601	23E	C22-C25-C27	-2.19	117.05	121.14
3	A	602	63F	O38-S47-C14	-2.19	105.27	108.05
2	A	601	23E	C16-C2-C3	2.17	115.87	110.67
2	A	601	23E	O38-C21-C22	-2.14	117.12	120.94
2	A	601	23E	C37-C31-C29	-2.07	110.18	114.61
3	B	602	63F	O38-S47-C14	-2.00	105.51	108.05

There are no chirality outliers.

All (7) torsion outliers are listed below:

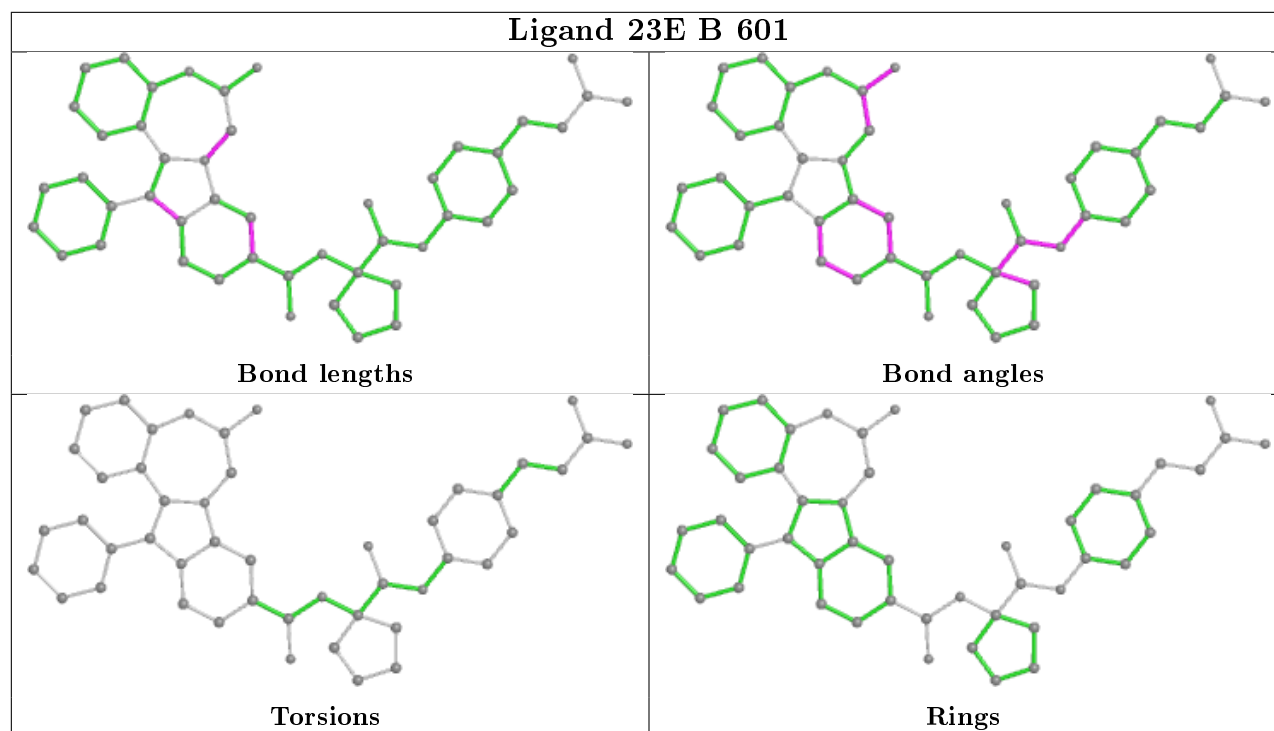
Mol	Chain	Res	Type	Atoms
3	A	602	63F	F46-C28-O40-C13
3	A	602	63F	F44-C28-O40-C13
3	A	602	63F	F45-C28-O40-C13
3	A	602	63F	F41-C27-O39-C12
3	A	602	63F	C22-N32-S47-O38
3	A	602	63F	C22-N32-S47-O37
3	A	602	63F	C22-N32-S47-C14

There are no ring outliers.

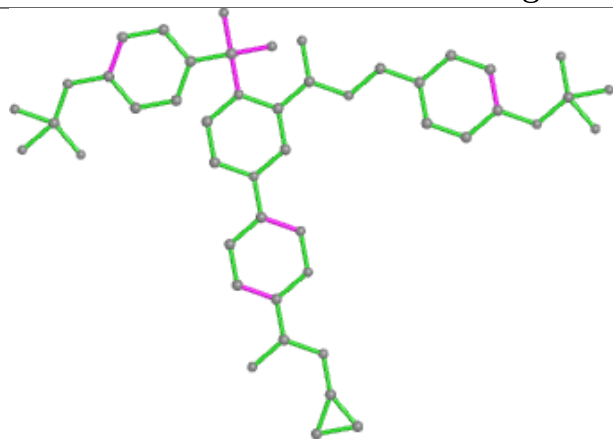
3 monomers are involved in 4 short contacts:

Mol	Chain	Res	Type	Clashes	Symm-Clashes
2	B	601	23E	2	0
3	B	602	63F	1	0
3	A	602	63F	1	0

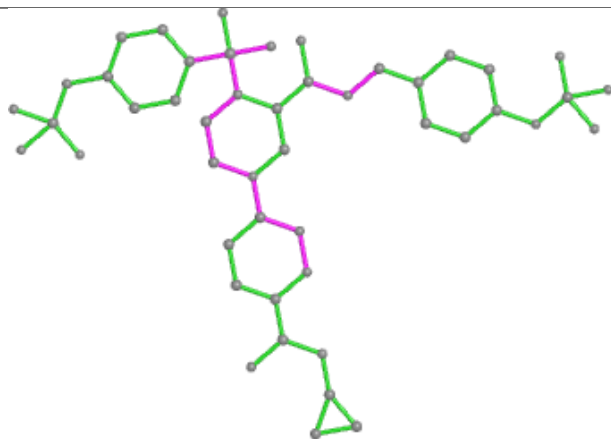
The following is a two-dimensional graphical depiction of Mogul quality analysis of bond lengths, bond angles, torsion angles, and ring geometry for all instances of the Ligand of Interest. In addition, ligands with molecular weight > 250 and outliers as shown on the validation Tables will also be included. For torsion angles, if less than 5% of the Mogul distribution of torsion angles is within 10 degrees of the torsion angle in question, then that torsion angle is considered an outlier. Any bond that is central to one or more torsion angles identified as an outlier by Mogul will be highlighted in the graph. For rings, the root-mean-square deviation (RMSD) between the ring in question and similar rings identified by Mogul is calculated over all ring torsion angles. If the average RMSD is greater than 60 degrees and the minimal RMSD between the ring in question and any Mogul-identified rings is also greater than 60 degrees, then that ring is considered an outlier. The outliers are highlighted in purple. The color gray indicates Mogul did not find sufficient equivalents in the CSD to analyse the geometry.



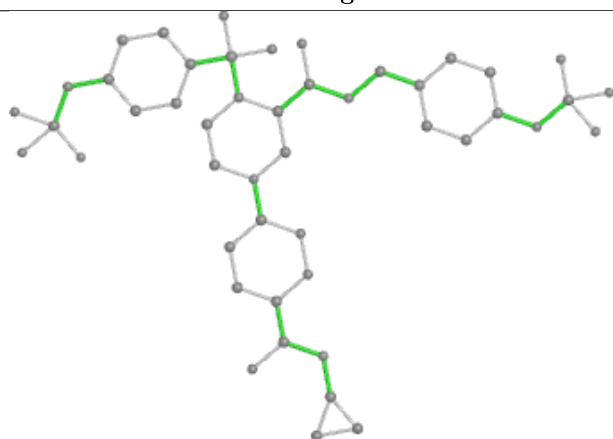
Ligand 63F B 602



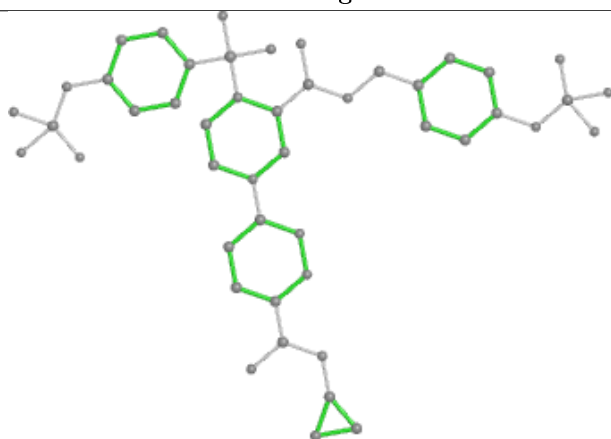
Bond lengths



Bond angles

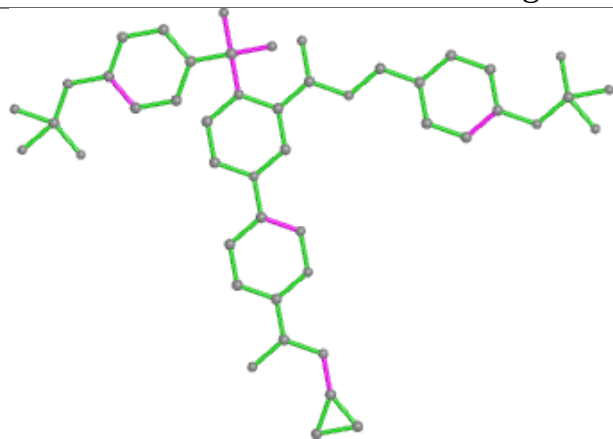


Torsions

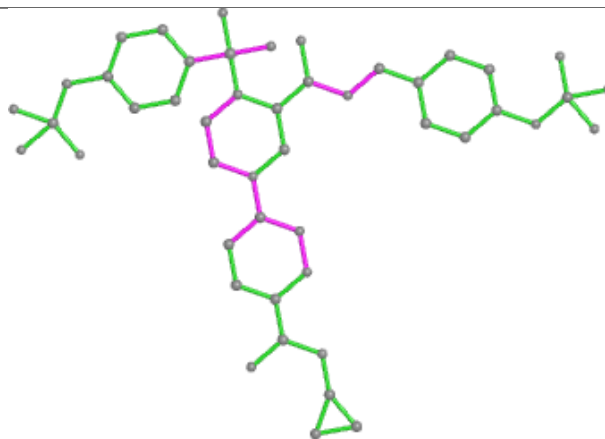


Rings

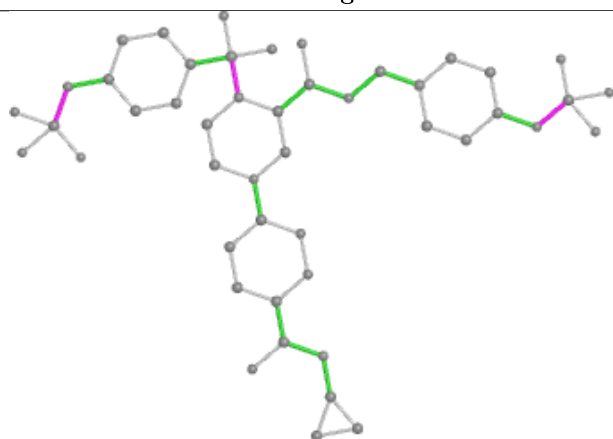
Ligand 63F A 602



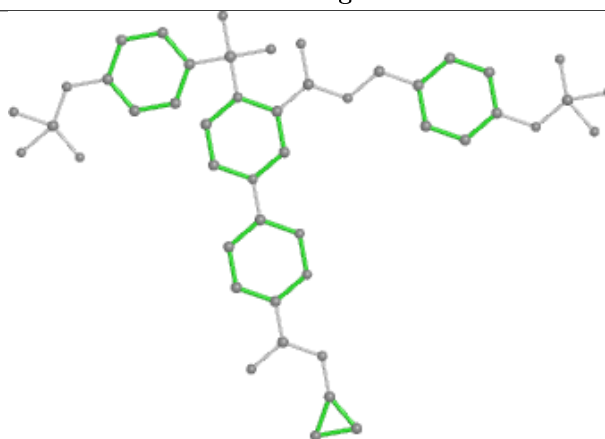
Bond lengths



Bond angles

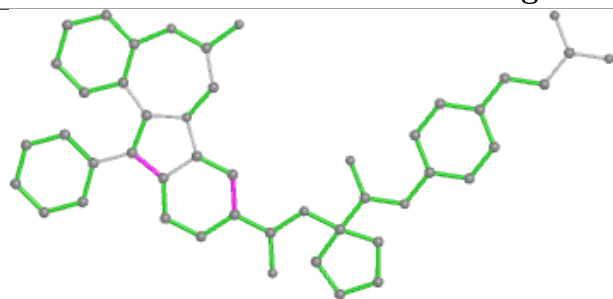


Torsions

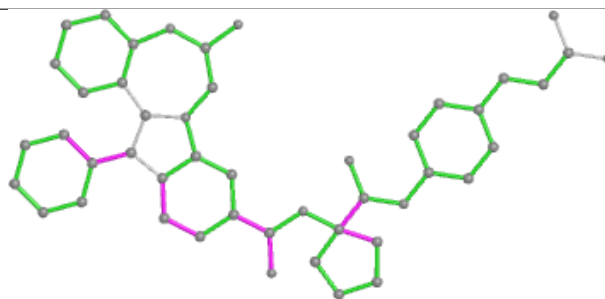


Rings

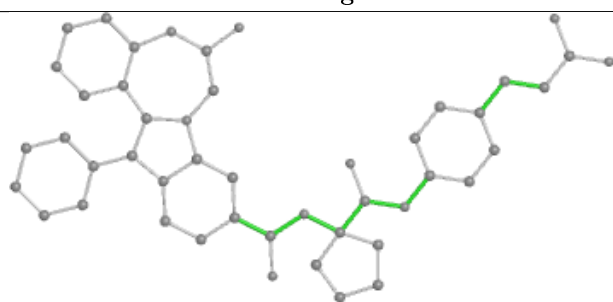
Ligand 23E A 601



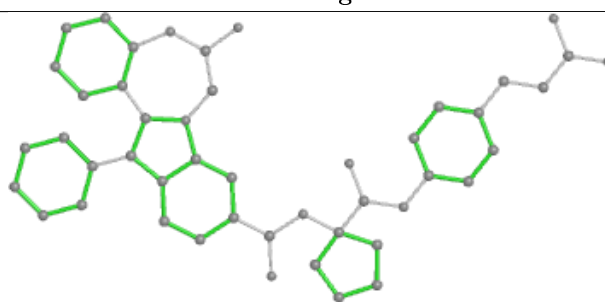
Bond lengths



Bond angles



Torsions



Rings

5.7 Other polymers [i](#)

There are no such residues in this entry.

5.8 Polymer linkage issues [i](#)

There are no chain breaks in this entry.

6 Fit of model and data ⓘ

6.1 Protein, DNA and RNA chains ⓘ

In the following table, the column labelled ‘#RSRZ> 2’ contains the number (and percentage) of RSRZ outliers, followed by percent RSRZ outliers for the chain as percentile scores relative to all X-ray entries and entries of similar resolution. The OWAB column contains the minimum, median, 95th percentile and maximum values of the occupancy-weighted average B-factor per residue. The column labelled ‘Q< 0.9’ lists the number of (and percentage) of residues with an average occupancy less than 0.9.

Mol	Chain	Analysed	<RSRZ>	#RSRZ>2		OWAB(Å ²)	Q<0.9
1	A	531/574 (92%)	0.09	28 (5%)	26 15	26, 54, 91, 126	0
1	B	536/574 (93%)	0.05	20 (3%)	41 28	26, 55, 102, 135	0
All	All	1067/1148 (92%)	0.07	48 (4%)	33 21	26, 54, 95, 135	0

All (48) RSRZ outliers are listed below:

Mol	Chain	Res	Type	RSRZ
1	B	150	GLU	5.9
1	B	543	SER	4.5
1	A	149	PRO	4.4
1	A	152	GLY	4.4
1	B	153	GLY	3.5
1	B	149	PRO	3.5
1	A	542	ALA	3.5
1	B	152	GLY	3.4
1	A	541	ALA	3.4
1	A	9	ALA	3.2
1	B	541	ALA	3.2
1	B	154	ARG	3.0
1	A	546	ASP	2.9
1	B	540	PRO	2.7
1	A	151	LYS	2.7
1	A	148	GLN	2.7
1	A	14	CYS	2.6
1	B	545	LEU	2.6
1	B	542	ALA	2.6
1	A	352	ASP	2.5
1	A	272	GLN	2.5
1	A	13	PRO	2.5
1	A	543	SER	2.5
1	A	270	LYS	2.5

Continued on next page...

Continued from previous page...

Mol	Chain	Res	Type	RSRZ
1	A	8	GLY	2.5
1	B	550	TRP	2.4
1	A	41	THR	2.4
1	A	103	TYR	2.4
1	B	14	CYS	2.4
1	B	151	LYS	2.4
1	A	99	SER	2.3
1	A	110	ASN	2.3
1	A	10	LEU	2.3
1	B	546	ASP	2.3
1	A	107	ASP	2.3
1	B	41	THR	2.2
1	B	13	PRO	2.2
1	A	7	THR	2.2
1	A	115	ALA	2.2
1	B	107	ASP	2.2
1	A	116	VAL	2.2
1	A	154	ARG	2.1
1	A	113	SER	2.1
1	B	548	SER	2.1
1	A	117	ASN	2.1
1	B	38	TYR	2.1
1	A	43	ARG	2.1
1	B	559	ASP	2.0

6.2 Non-standard residues in protein, DNA, RNA chains [i](#)

There are no non-standard protein/DNA/RNA residues in this entry.

6.3 Carbohydrates [i](#)

There are no carbohydrates in this entry.

6.4 Ligands [i](#)

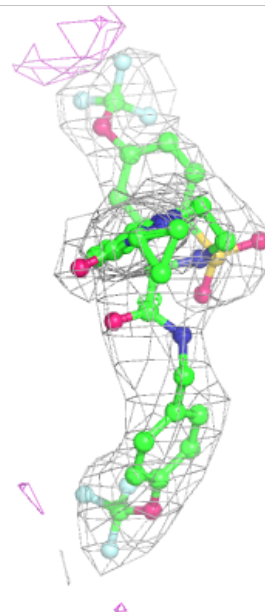
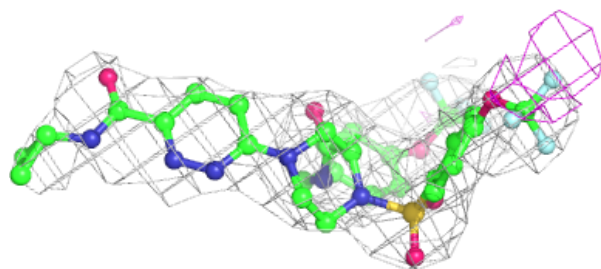
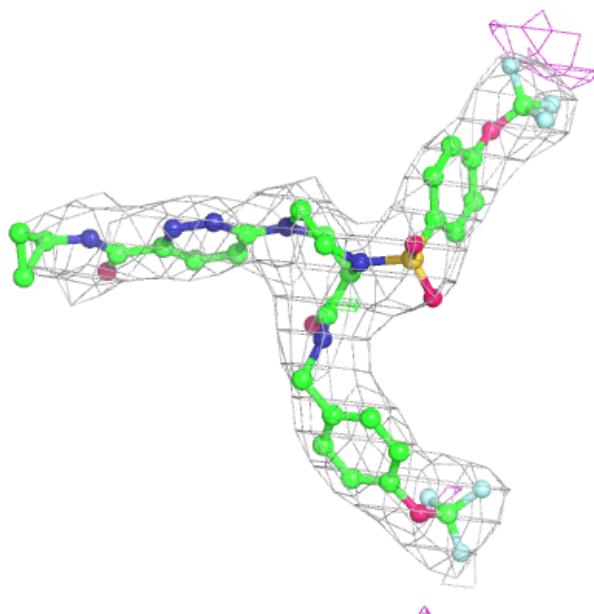
In the following table, the Atoms column lists the number of modelled atoms in the group and the number defined in the chemical component dictionary. The B-factors column lists the minimum, median, 95th percentile and maximum values of B factors of atoms in the group. The column labelled 'Q< 0.9' lists the number of atoms with occupancy less than 0.9.

Mol	Type	Chain	Res	Atoms	RSCC	RSR	B-factors(\AA^2)	Q<0.9
4	SO4	B	657	5/5	0.74	0.33	132,136,137,138	0
4	SO4	A	652	5/5	0.81	0.29	126,130,131,132	0
3	63F	A	602	47/47	0.92	0.24	66,76,87,90	0
4	SO4	B	652	5/5	0.92	0.21	92,96,97,97	0
4	SO4	A	653	5/5	0.94	0.17	65,69,70,71	0
3	63F	B	602	47/47	0.94	0.20	49,61,70,72	0
2	23E	B	601	47/47	0.95	0.23	29,36,57,66	0
2	23E	A	601	47/47	0.95	0.27	21,35,65,75	0
4	SO4	B	651	5/5	0.96	0.13	89,93,94,94	0
4	SO4	A	659	5/5	0.98	0.12	75,79,80,81	0

The following is a graphical depiction of the model fit to experimental electron density of all instances of the Ligand of Interest. In addition, ligands with molecular weight > 250 and outliers as shown on the geometry validation Tables will also be included. Each fit is shown from different orientation to approximate a three-dimensional view.

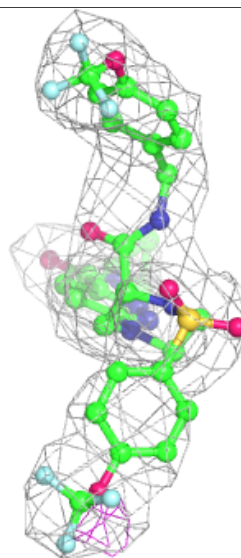
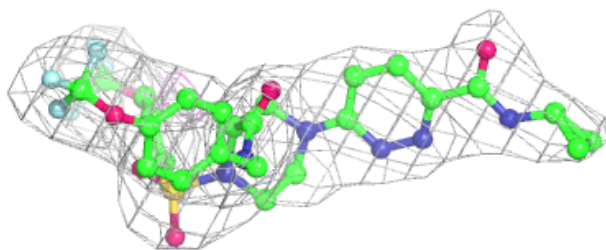
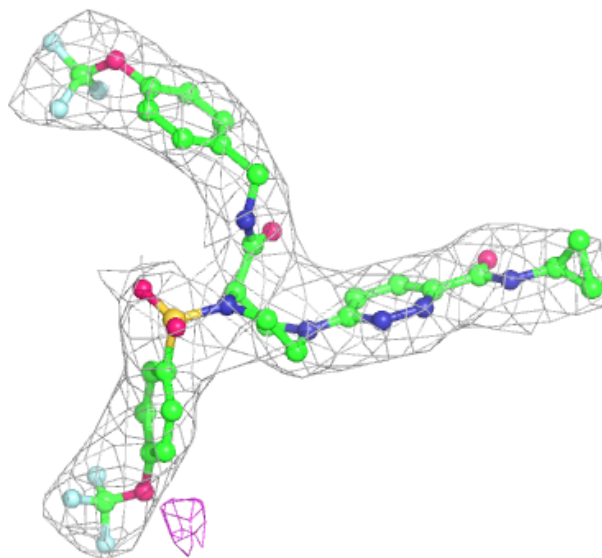
Electron density around 63F A 602:

$2mF_o-DF_c$ (at 0.7 rmsd) in gray
 mF_o-DF_c (at 3 rmsd) in purple (negative)
and green (positive)



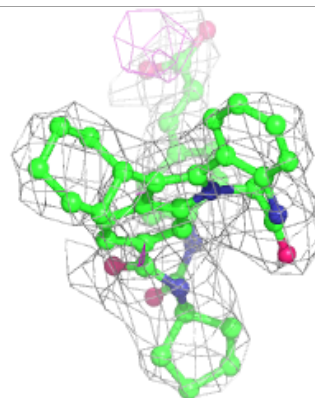
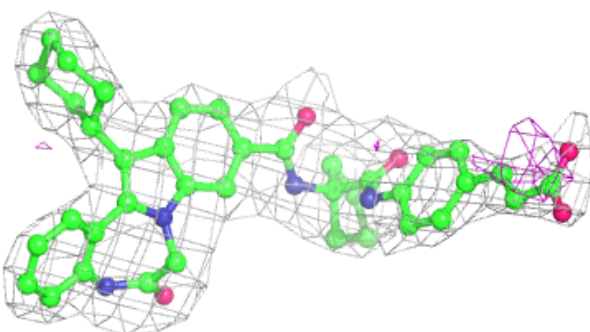
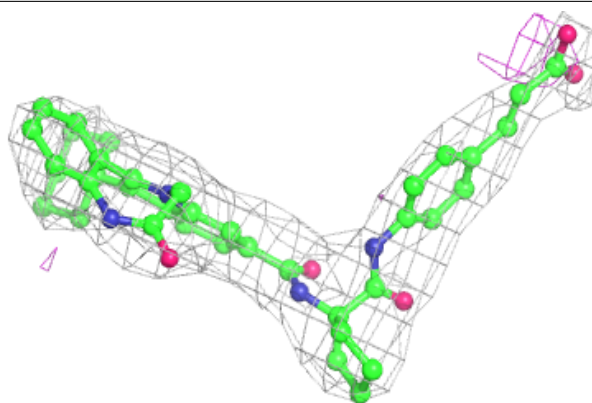
Electron density around 63F B 602:

$2mF_o-DF_c$ (at 0.7 rmsd) in gray
 mF_o-DF_c (at 3 rmsd) in purple (negative)
and green (positive)

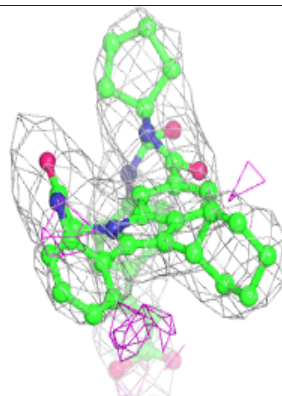
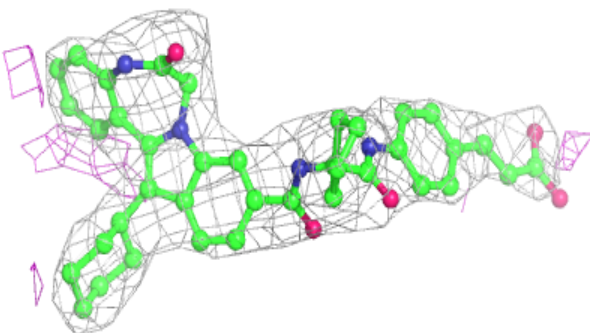
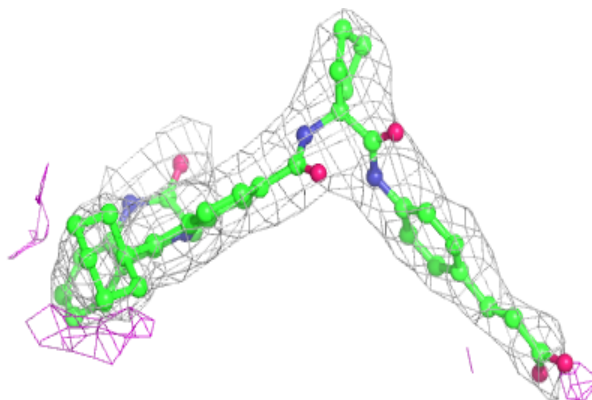


Electron density around 23E B 601:

$2mF_o-DF_c$ (at 0.7 rmsd) in gray
 mF_o-DF_c (at 3 rmsd) in purple (negative)
and green (positive)

**Electron density around 23E A 601:**

$2mF_o-DF_c$ (at 0.7 rmsd) in gray
 mF_o-DF_c (at 3 rmsd) in purple (negative)
and green (positive)



6.5 Other polymers

There are no such residues in this entry.