



Full wwPDB X-ray Structure Validation Report ⓘ

May 16, 2020 – 06:31 am BST

PDB ID : 4QIM
Title : Structure of the human smoothened receptor in complex with ANTA XV
Authors : Wang, C.; Wu, H.; Evron, T.; Vardy, E.; Han, G.W.; Huang, X.-P.; Hufeisen, S.J.; Mangano, T.J.; Urban, D.J.; Katritch, V.; Cherezov, V.; Caron, M.G.; Roth, B.L.; Stevens, R.C.; GPCR Network (GPCR)
Deposited on : 2014-05-31
Resolution : 2.61 Å(reported)

This is a Full wwPDB X-ray Structure Validation Report for a publicly released PDB entry.

We welcome your comments at validation@mail.wwpdb.org

A user guide is available at

<https://www.wwpdb.org/validation/2017/XrayValidationReportHelp>

with specific help available everywhere you see the ⓘ symbol.

The following versions of software and data (see [references ⓘ](#)) were used in the production of this report:

MolProbity : 4.02b-467
Mogul : 1.8.5 (274361), CSD as541be (2020)
Xtriage (Phenix) : 1.13
EDS : 2.11
buster-report : 1.1.7 (2018)
Percentile statistics : 20191225.v01 (using entries in the PDB archive December 25th 2019)
Refmac : 5.8.0158
CCP4 : 7.0.044 (Gargrove)
Ideal geometry (proteins) : Engh & Huber (2001)
Ideal geometry (DNA, RNA) : Parkinson et al. (1996)
Validation Pipeline (wwPDB-VP) : 2.11

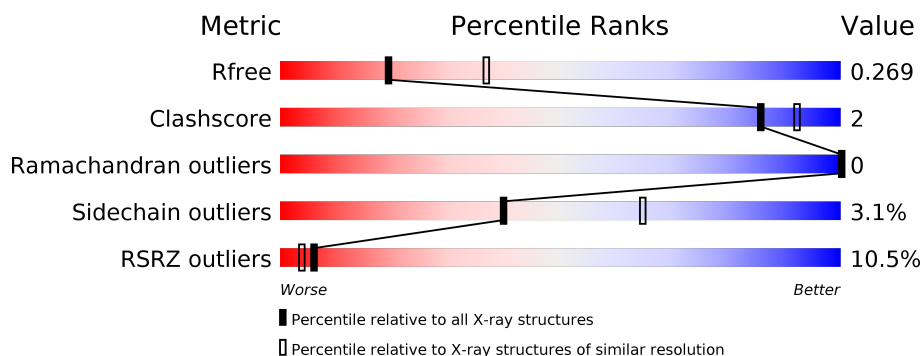
1 Overall quality at a glance

The following experimental techniques were used to determine the structure:

X-RAY DIFFRACTION

The reported resolution of this entry is 2.61 Å.

Percentile scores (ranging between 0-100) for global validation metrics of the entry are shown in the following graphic. The table shows the number of entries on which the scores are based.



Metric	Whole archive (#Entries)	Similar resolution (#Entries, resolution range(Å))
R_{free}	130704	3797 (2.64-2.60)
Clashscore	141614	4168 (2.64-2.60)
Ramachandran outliers	138981	4093 (2.64-2.60)
Sidechain outliers	138945	4093 (2.64-2.60)
RSRZ outliers	127900	3731 (2.64-2.60)

The table below summarises the geometric issues observed across the polymeric chains and their fit to the electron density. The red, orange, yellow and green segments on the lower bar indicate the fraction of residues that contain outliers for ≥ 3 , 2, 1 and 0 types of geometric quality criteria respectively. A grey segment represents the fraction of residues that are not modelled. The numeric value for each fraction is indicated below the corresponding segment, with a dot representing fractions $\leq 5\%$. The upper red bar (where present) indicates the fraction of residues that have poor fit to the electron density. The numeric value is given above the bar.

Mol	Chain	Length	Quality of chain
1	A	468	

2 Entry composition [i](#)

There are 4 unique types of molecules in this entry. The entry contains 3576 atoms, of which 0 are hydrogens and 0 are deuteriums.

In the tables below, the ZeroOcc column contains the number of atoms modelled with zero occupancy, the AltConf column contains the number of residues with at least one atom in alternate conformation and the Trace column contains the number of residues modelled with at most 2 atoms.

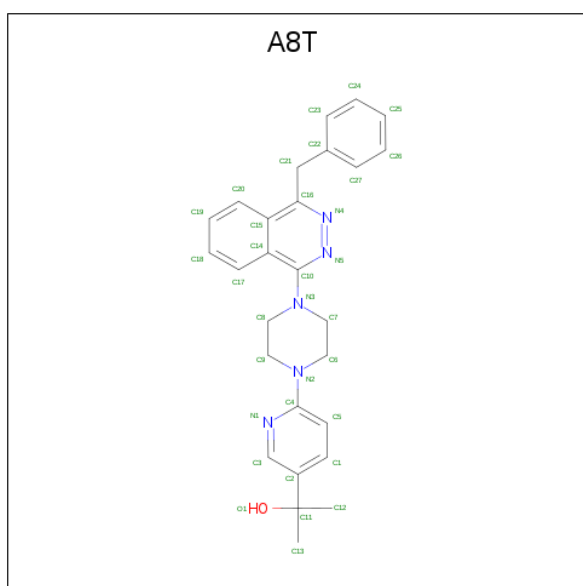
- Molecule 1 is a protein called Smoothened homolog/Soluble cytochrome b562 chimeric protein.

Mol	Chain	Residues	Atoms					ZeroOcc	AltConf	Trace
1	A	457	Total	C	N	O	S	0	0	0
			3519	2292	579	626	22			

There are 6 discrepancies between the modelled and reference sequences:

Chain	Residue	Modelled	Actual	Comment	Reference
A	187	GLY	-	EXPRESSION TAG	UNP Q99835
A	188	GLY	-	EXPRESSION TAG	UNP Q99835
A	189	THR	-	EXPRESSION TAG	UNP Q99835
A	1007	TRP	MET	ENGINEERED MUTATION	UNP P0ABE7
A	1102	ILE	HIS	ENGINEERED MUTATION	UNP P0ABE7
A	1106	LEU	ARG	ENGINEERED MUTATION	UNP P0ABE7

- Molecule 2 is 2-{6-[4-(4-benzylphthalazin-1-yl)piperazin-1-yl]pyridin-3-yl}propan-2-ol (three-letter code: A8T) (formula: C₂₇H₂₉N₅O).



Mol	Chain	Residues	Atoms				ZeroOcc	AltConf
2	A	1	Total	C	N	O	0	0
			33	27	5	1		

- Molecule 3 is ZINC ION (three-letter code: ZN) (formula: Zn).

Mol	Chain	Residues	Atoms		ZeroOcc	AltConf
3	A	1	Total	Zn	0	0
			1	1		

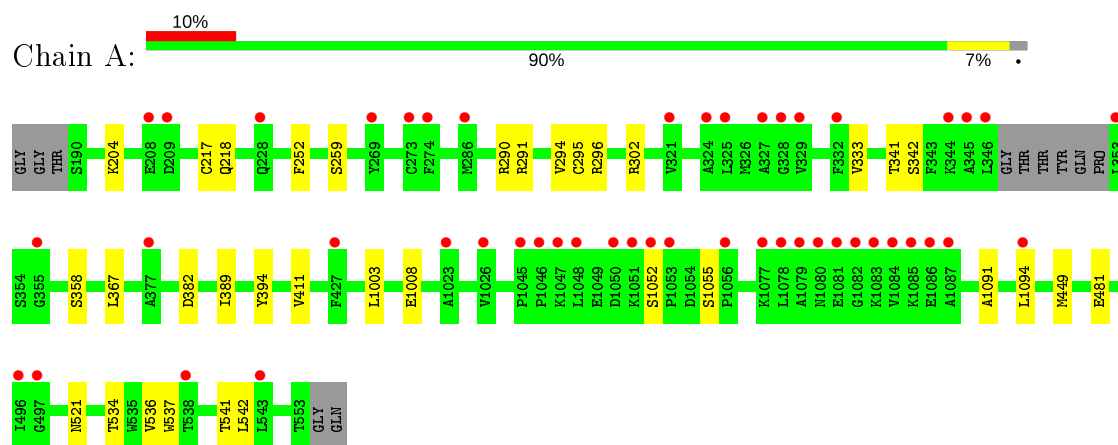
- Molecule 4 is water.

Mol	Chain	Residues	Atoms		ZeroOcc	AltConf
4	A	23	Total	O	0	0
			23	23		

3 Residue-property plots [i](#)

These plots are drawn for all protein, RNA and DNA chains in the entry. The first graphic for a chain summarises the proportions of the various outlier classes displayed in the second graphic. The second graphic shows the sequence view annotated by issues in geometry and electron density. Residues are color-coded according to the number of geometric quality criteria for which they contain at least one outlier: green = 0, yellow = 1, orange = 2 and red = 3 or more. A red dot above a residue indicates a poor fit to the electron density ($RSRZ > 2$). Stretches of 2 or more consecutive residues without any outlier are shown as a green connector. Residues present in the sample, but not in the model, are shown in grey.

- Molecule 1: Smoothened homolog/Soluble cytochrome b562 chimeric protein



4 Data and refinement statistics

Property	Value	Source
Space group	P 21 21 21	Depositor
Cell constants a, b, c, α , β , γ	42.83 Å 79.84 Å 170.07 Å 90.00° 90.00° 90.00°	Depositor
Resolution (Å)	32.64 – 2.61 32.64 – 2.61	Depositor EDS
% Data completeness (in resolution range)	94.0 (32.64-2.61) 94.0 (32.64-2.61)	Depositor EDS
R_{merge}	0.09	Depositor
R_{sym}	(Not available)	Depositor
$\langle I/\sigma(I) \rangle$ ¹	2.70 (at 2.61 Å)	Xtriage
Refinement program	BUSTER 2.10.0	Depositor
R, R_{free}	0.223 , 0.263 0.229 , 0.269	Depositor DCC
R_{free} test set	901 reflections (5.19%)	wwPDB-VP
Wilson B-factor (Å ²)	75.9	Xtriage
Anisotropy	0.594	Xtriage
Bulk solvent k_{sol} (e/Å ³), B_{sol} (Å ²)	0.31 , 75.7	EDS
L-test for twinning ²	$\langle L \rangle = 0.49$, $\langle L^2 \rangle = 0.33$	Xtriage
Estimated twinning fraction	No twinning to report.	Xtriage
F_o, F_c correlation	0.94	EDS
Total number of atoms	3576	wwPDB-VP
Average B, all atoms (Å ²)	97.0	wwPDB-VP

Xtriage's analysis on translational NCS is as follows: *The largest off-origin peak in the Patterson function is 5.86% of the height of the origin peak. No significant pseudotranslation is detected.*

¹Intensities estimated from amplitudes.

²Theoretical values of $\langle |L| \rangle$, $\langle L^2 \rangle$ for acentric reflections are 0.5, 0.333 respectively for untwinned datasets, and 0.375, 0.2 for perfectly twinned datasets.

5 Model quality [i](#)

5.1 Standard geometry [i](#)

Bond lengths and bond angles in the following residue types are not validated in this section: ZN, A8T

The Z score for a bond length (or angle) is the number of standard deviations the observed value is removed from the expected value. A bond length (or angle) with $|Z| > 5$ is considered an outlier worth inspection. RMSZ is the root-mean-square of all Z scores of the bond lengths (or angles).

Mol	Chain	Bond lengths		Bond angles	
		RMSZ	$\# Z > 5$	RMSZ	$\# Z > 5$
1	A	0.48	0/3609	0.59	0/4919

There are no bond length outliers.

There are no bond angle outliers.

There are no chirality outliers.

There are no planarity outliers.

5.2 Too-close contacts [i](#)

In the following table, the Non-H and H(model) columns list the number of non-hydrogen atoms and hydrogen atoms in the chain respectively. The H(added) column lists the number of hydrogen atoms added and optimized by MolProbity. The Clashes column lists the number of clashes within the asymmetric unit, whereas Symm-Clashes lists symmetry related clashes.

Mol	Chain	Non-H	H(model)	H(added)	Clashes	Symm-Clashes
1	A	3519	0	3400	15	0
2	A	33	0	29	2	0
3	A	1	0	0	0	0
4	A	23	0	0	0	0
All	All	3576	0	3429	15	0

The all-atom clashscore is defined as the number of clashes found per 1000 atoms (including hydrogen atoms). The all-atom clashscore for this structure is 2.

All (15) close contacts within the same asymmetric unit are listed below, sorted by their clash magnitude.

Atom-1	Atom-2	Interatomic distance (Å)	Clash overlap (Å)
1:A:291:ARG:HG3	1:A:295:CYS:SG	2.38	0.63
1:A:1091:ALA:HA	1:A:1094:LEU:HD12	1.87	0.56
1:A:342:SER:HB2	1:A:449:MET:HE1	1.92	0.52
1:A:342:SER:HB2	1:A:449:MET:CE	2.41	0.51
1:A:536:VAL:HB	1:A:541:THR:HG21	1.93	0.50
1:A:382:ASP:HB2	1:A:394:TYR:HB2	1.95	0.48
1:A:217:CYS:SG	1:A:294:VAL:HG12	2.55	0.47
1:A:252:PHE:CD2	1:A:259:SER:HB3	2.51	0.45
1:A:204:LYS:HE3	1:A:296:ARG:HH22	1.81	0.45
1:A:333:VAL:HG23	1:A:411:VAL:HB	2.00	0.44
1:A:389:ILE:HD11	2:A:1201:A8T:H26	1.98	0.44
1:A:1052:SER:HB3	1:A:1055:SER:HB3	2.02	0.42
1:A:394:TYR:O	2:A:1201:A8T:H10	2.20	0.41
1:A:333:VAL:CG2	1:A:411:VAL:HB	2.51	0.40
1:A:534:THR:HA	1:A:537:TRP:CD1	2.56	0.40

There are no symmetry-related clashes.

5.3 Torsion angles ⓘ

5.3.1 Protein backbone ⓘ

In the following table, the Percentiles column shows the percent Ramachandran outliers of the chain as a percentile score with respect to all X-ray entries followed by that with respect to entries of similar resolution.

The Analysed column shows the number of residues for which the backbone conformation was analysed, and the total number of residues.

Mol	Chain	Analysed	Favoured	Allowed	Outliers	Percentiles	
1	A	453/468 (97%)	440 (97%)	13 (3%)	0	100	100

There are no Ramachandran outliers to report.

5.3.2 Protein sidechains ⓘ

In the following table, the Percentiles column shows the percent sidechain outliers of the chain as a percentile score with respect to all X-ray entries followed by that with respect to entries of similar resolution.

The Analysed column shows the number of residues for which the sidechain conformation was analysed, and the total number of residues.

Mol	Chain	Analysed	Rotameric	Outliers	Percentiles
1	A	355/390 (91%)	344 (97%)	11 (3%)	40 65

All (11) residues with a non-rotameric sidechain are listed below:

Mol	Chain	Res	Type
1	A	218	GLN
1	A	290	ARG
1	A	302	ARG
1	A	341	THR
1	A	358	SER
1	A	367	LEU
1	A	1003	LEU
1	A	1008	GLU
1	A	481	GLU
1	A	521	ASN
1	A	542	LEU

Some sidechains can be flipped to improve hydrogen bonding and reduce clashes. There are no such sidechains identified.

5.3.3 RNA ⓘ

There are no RNA molecules in this entry.

5.4 Non-standard residues in protein, DNA, RNA chains ⓘ

There are no non-standard protein/DNA/RNA residues in this entry.

5.5 Carbohydrates ⓘ

There are no carbohydrates in this entry.

5.6 Ligand geometry ⓘ

Of 2 ligands modelled in this entry, 1 is monoatomic - leaving 1 for Mogul analysis.

In the following table, the Counts columns list the number of bonds (or angles) for which Mogul statistics could be retrieved, the number of bonds (or angles) that are observed in the model and the number of bonds (or angles) that are defined in the Chemical Component Dictionary. The Link column lists molecule types, if any, to which the group is linked. The Z score for a bond length (or angle) is the number of standard deviations the observed value is removed from the

expected value. A bond length (or angle) with $|Z| > 2$ is considered an outlier worth inspection. RMSZ is the root-mean-square of all Z scores of the bond lengths (or angles).

Mol	Type	Chain	Res	Link	Bond lengths			Bond angles		
					Counts	RMSZ	$\# Z > 2$	Counts	RMSZ	$\# Z > 2$
2	A8T	A	1201	-	37,37,37	2.79	12 (32%)	48,53,53	1.54	11 (22%)

In the following table, the Chirals column lists the number of chiral outliers, the number of chiral centers analysed, the number of these observed in the model and the number defined in the Chemical Component Dictionary. Similar counts are reported in the Torsion and Rings columns. '-' means no outliers of that kind were identified.

Mol	Type	Chain	Res	Link	Chirals	Torsions	Rings
2	A8T	A	1201	-	-	5/18/28/28	0/5/5/5

All (12) bond length outliers are listed below:

Mol	Chain	Res	Type	Atoms	Z	Observed(Å)	Ideal(Å)
2	A	1201	A8T	C21-C16	7.49	1.57	1.51
2	A	1201	A8T	C24-C23	6.19	1.51	1.38
2	A	1201	A8T	C27-C22	6.13	1.52	1.38
2	A	1201	A8T	C4-N2	5.36	1.48	1.37
2	A	1201	A8T	C26-C25	4.86	1.50	1.38
2	A	1201	A8T	O1-C11	-4.52	1.37	1.44
2	A	1201	A8T	C10-N3	3.71	1.48	1.37
2	A	1201	A8T	C12-C11	-3.69	1.48	1.52
2	A	1201	A8T	C3-C2	3.52	1.42	1.38
2	A	1201	A8T	C18-C17	2.71	1.42	1.36
2	A	1201	A8T	C19-C20	2.44	1.42	1.36
2	A	1201	A8T	C10-C14	2.16	1.48	1.43

All (11) bond angle outliers are listed below:

Mol	Chain	Res	Type	Atoms	Z	Observed(°)	Ideal(°)
2	A	1201	A8T	C14-C10-N5	-5.00	119.08	126.80
2	A	1201	A8T	C1-C2-C3	-3.00	114.23	117.69
2	A	1201	A8T	C2-C3-N1	2.84	126.06	123.34
2	A	1201	A8T	C1-C5-C4	2.66	121.20	117.53
2	A	1201	A8T	C6-N2-C9	2.53	117.11	111.52
2	A	1201	A8T	C5-C4-N1	-2.47	118.87	123.41
2	A	1201	A8T	C10-N5-N4	2.36	123.18	118.65
2	A	1201	A8T	C9-N2-C4	-2.33	114.97	120.39
2	A	1201	A8T	C16-N4-N5	2.33	122.02	120.03
2	A	1201	A8T	C1-C2-C11	2.13	124.27	121.55

Continued on next page...

Continued from previous page...

Mol	Chain	Res	Type	Atoms	Z	Observed(°)	Ideal(°)
2	A	1201	A8T	C16-C15-C14	-2.06	117.07	118.19

There are no chirality outliers.

All (5) torsion outliers are listed below:

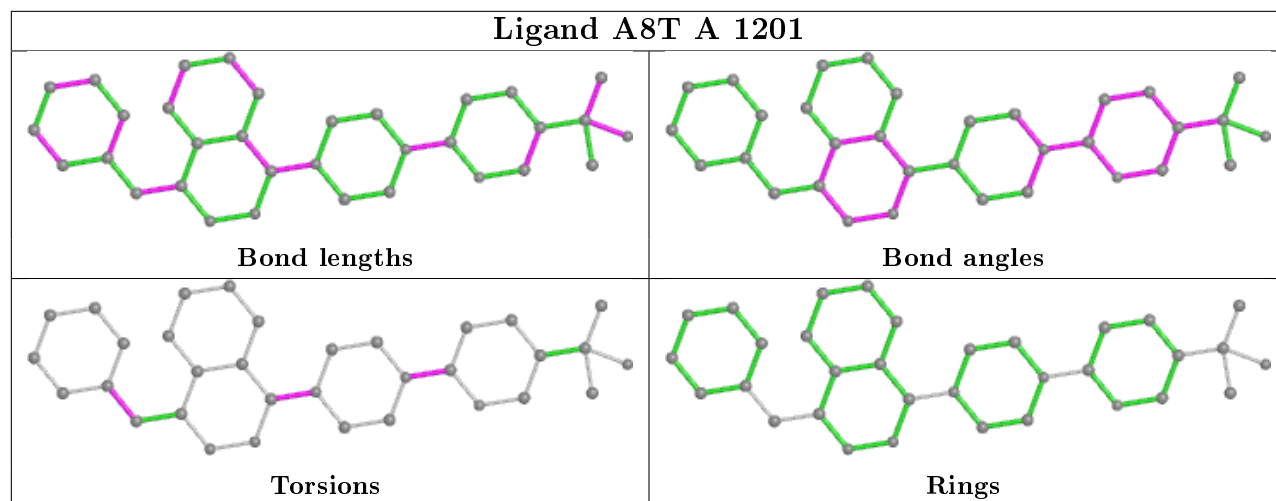
Mol	Chain	Res	Type	Atoms
2	A	1201	A8T	N1-C4-N2-C6
2	A	1201	A8T	C5-C4-N2-C6
2	A	1201	A8T	C16-C21-C22-C23
2	A	1201	A8T	C16-C21-C22-C27
2	A	1201	A8T	N5-C10-N3-C7

There are no ring outliers.

1 monomer is involved in 2 short contacts:

Mol	Chain	Res	Type	Clashes	Symm-Clashes
2	A	1201	A8T	2	0

The following is a two-dimensional graphical depiction of Mogul quality analysis of bond lengths, bond angles, torsion angles, and ring geometry for all instances of the Ligand of Interest. In addition, ligands with molecular weight > 250 and outliers as shown on the validation Tables will also be included. For torsion angles, if less than 5% of the Mogul distribution of torsion angles is within 10 degrees of the torsion angle in question, then that torsion angle is considered an outlier. Any bond that is central to one or more torsion angles identified as an outlier by Mogul will be highlighted in the graph. For rings, the root-mean-square deviation (RMSD) between the ring in question and similar rings identified by Mogul is calculated over all ring torsion angles. If the average RMSD is greater than 60 degrees and the minimal RMSD between the ring in question and any Mogul-identified rings is also greater than 60 degrees, then that ring is considered an outlier. The outliers are highlighted in purple. The color gray indicates Mogul did not find sufficient equivalents in the CSD to analyse the geometry.



5.7 Other polymers [i](#)

There are no such residues in this entry.

5.8 Polymer linkage issues [i](#)

There are no chain breaks in this entry.

6 Fit of model and data ⓘ

6.1 Protein, DNA and RNA chains ⓘ

In the following table, the column labelled ‘#RSRZ> 2’ contains the number (and percentage) of RSRZ outliers, followed by percent RSRZ outliers for the chain as percentile scores relative to all X-ray entries and entries of similar resolution. The OWAB column contains the minimum, median, 95th percentile and maximum values of the occupancy-weighted average B-factor per residue. The column labelled ‘Q< 0.9’ lists the number of (and percentage) of residues with an average occupancy less than 0.9.

Mol	Chain	Analysed	<RSRZ>	#RSRZ>2	OWAB(Å ²)	Q<0.9
1	A	457/468 (97%)	0.60	48 (10%) 6 4	71, 91, 146, 192	0

All (48) RSRZ outliers are listed below:

Mol	Chain	Res	Type	RSRZ
1	A	1086	GLU	9.2
1	A	1048	LEU	8.5
1	A	1051	LYS	7.2
1	A	1050	ASP	7.2
1	A	1084	VAL	6.7
1	A	1052	SER	6.0
1	A	496	ILE	5.6
1	A	1077	LYS	5.3
1	A	1023	ALA	5.2
1	A	1047	LYS	5.2
1	A	345	ALA	5.0
1	A	1080	ASN	4.6
1	A	1053	PRO	4.3
1	A	209	ASP	4.3
1	A	1087	ALA	4.3
1	A	1081	GLU	4.2
1	A	1045	PRO	4.0
1	A	1079	ALA	3.9
1	A	1085	LYS	3.7
1	A	228	GLN	3.5
1	A	1083	LYS	3.4
1	A	497	GLY	3.4
1	A	324	ALA	3.3
1	A	1082	GLY	3.2
1	A	353	LEU	3.2
1	A	1056	PRO	3.1
1	A	1094	LEU	3.0

Continued on next page...

Continued from previous page...

Mol	Chain	Res	Type	RSRZ
1	A	321	VAL	3.0
1	A	328	GLY	3.0
1	A	273	CYS	2.8
1	A	325	LEU	2.7
1	A	377	ALA	2.6
1	A	543	LEU	2.6
1	A	208	GLU	2.5
1	A	274	PHE	2.5
1	A	538	THR	2.5
1	A	1046	PRO	2.4
1	A	286	MET	2.4
1	A	329	VAL	2.3
1	A	1078	LEU	2.3
1	A	327	ALA	2.1
1	A	427	PHE	2.1
1	A	344	LYS	2.1
1	A	355	GLY	2.1
1	A	1026	VAL	2.1
1	A	269	TYR	2.1
1	A	332	PHE	2.1
1	A	346	LEU	2.1

6.2 Non-standard residues in protein, DNA, RNA chains ⓘ

There are no non-standard protein/DNA/RNA residues in this entry.

6.3 Carbohydrates ⓘ

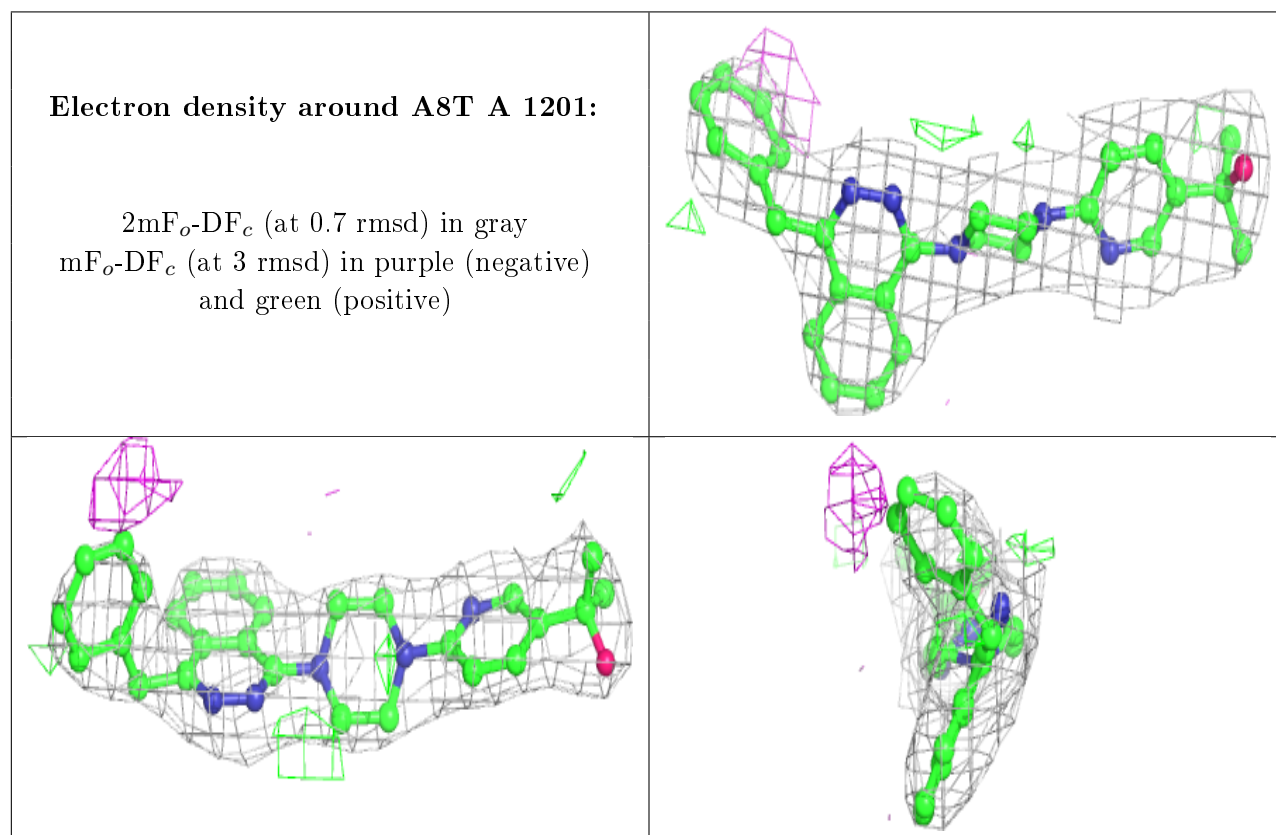
There are no carbohydrates in this entry.

6.4 Ligands ⓘ

In the following table, the Atoms column lists the number of modelled atoms in the group and the number defined in the chemical component dictionary. The B-factors column lists the minimum, median, 95th percentile and maximum values of B factors of atoms in the group. The column labelled 'Q< 0.9' lists the number of atoms with occupancy less than 0.9.

Mol	Type	Chain	Res	Atoms	RSCC	RSR	B-factors(\AA^2)	Q<0.9
3	ZN	A	1202	1/1	0.92	0.08	129,129,129,129	0
2	A8T	A	1201	33/33	0.94	0.29	66,71,75,75	0

The following is a graphical depiction of the model fit to experimental electron density of all instances of the Ligand of Interest. In addition, ligands with molecular weight > 250 and outliers as shown on the geometry validation Tables will also be included. Each fit is shown from different orientation to approximate a three-dimensional view.



6.5 Other polymers [i](#)

There are no such residues in this entry.